

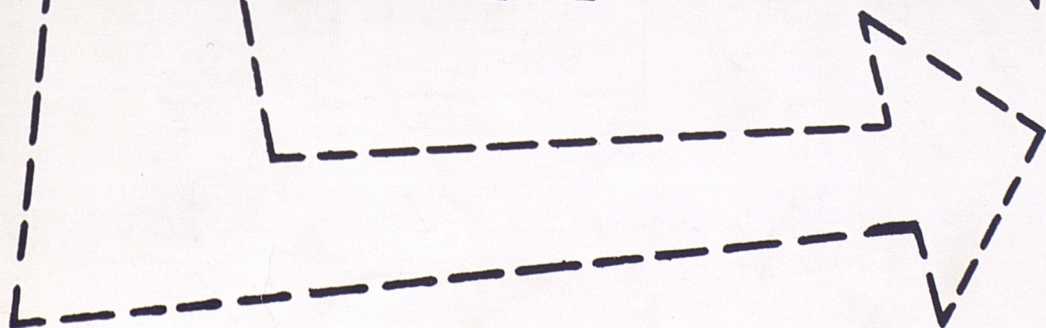
1956-57

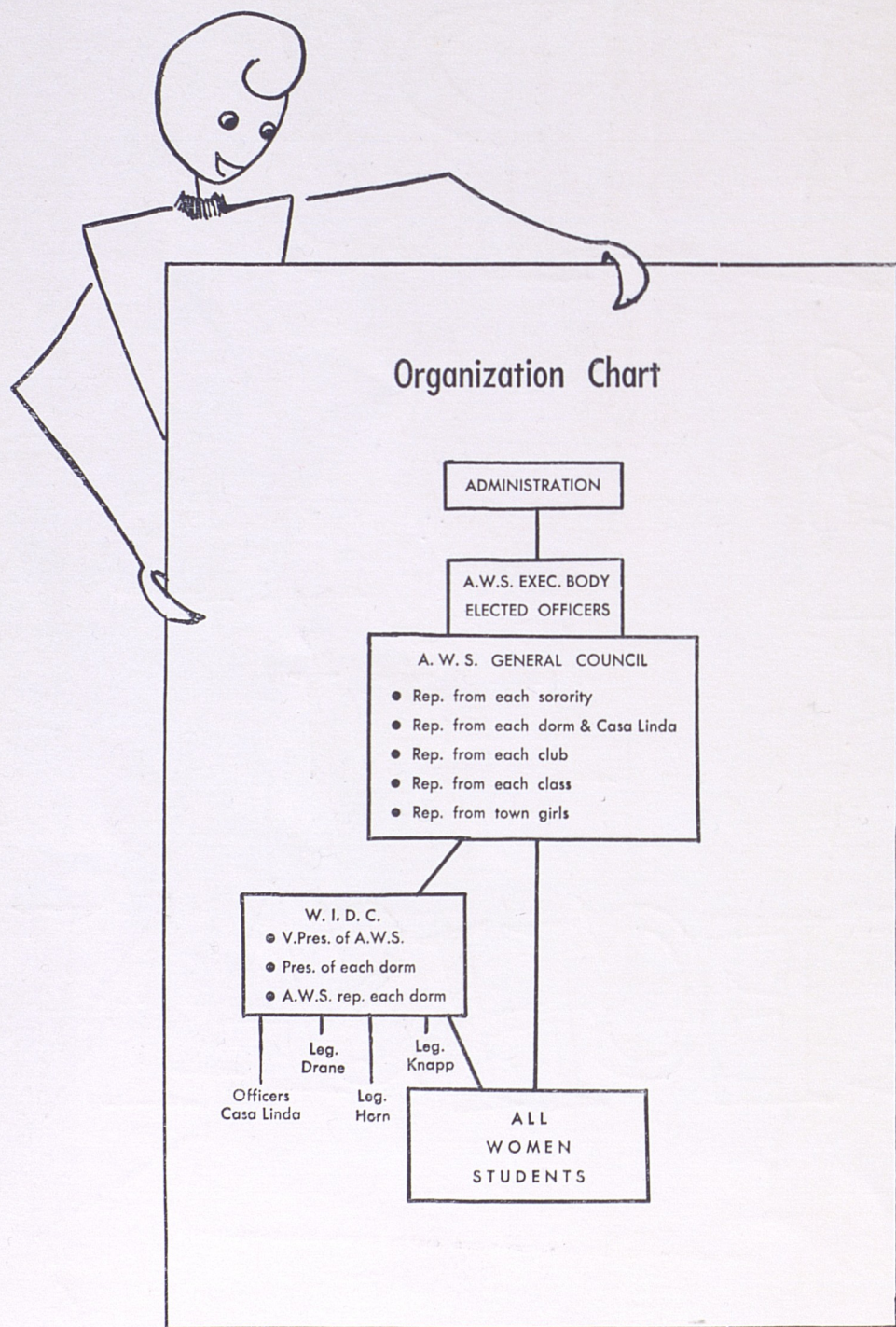
TIPS



TO THE
NEW

TECHSAN





The Association of Women Students
of
Texas Technological College
presents

TIPS for the new TECHSAN

*A Handbook
for
Women Students*

1956-1957

| | |
|--------------------------|-------------------|
| Editor-in-Chief | Marguerite Winder |
| Government Editor | Barbara Pearce |
| Dormitory Editor | Nancy Kaisner |
| W.I.D.C. Editor | Sue Watkins |
| Honoraries Editor | Melba Neely |
| Panhellenic Editor | Joan Knight |
| Cover Designer | Polly Johnson |
| Staff | Theta Sigma Phi |



CONTENTS

| | |
|---|----|
| Dean's Letter | 4 |
| GOVERNMENT | |
| Greetings from Texas Tech and AWS | 6 |
| You and AWS | 7 |
| Let's Pursue the Course of Study | 8 |
| Clothes Woes? | 9 |
| Howdy | 10 |
| AWS Activities System | 10 |
| Constitution and By-Laws | 11 |
| Women's Creed | 14 |
| DORMITORIES | |
| A Roof O'er Your Head | 16 |
| Your Roommate's Roommate | 16 |
| A Friend in Deed | 17 |
| Dormitory Government | 17 |
| How, When and Where, to do What | 17 |
| Guests in Dorm | 18 |
| Dormitory Regulations | 18 |
| Horn Hall | 21 |
| Knapp Hall | 22 |
| Casa Linda | 23 |
| Drane Hall | 24 |
| HONORARIES | |
| Alpha Lambda Delta | 26 |
| Junior Council | 26 |
| Forum | 27 |
| Mu Phi Epsilon | 27 |
| Phi Gamma Nu | 28 |

| | |
|---------------------------|----|
| Phi Upsilon Omicron | 28 |
| Pi Omega Pi | 29 |
| Tau Beta Sigma | 29 |
| Theta Sigma Phi | 30 |

SORORITIES

| | |
|---|----|
| Panhellenic Information | 32 |
| Panhellenic Council | 32 |
| President's Letter | 32 |
| What is Panhellenic | 33 |
| What is Rush Week | 33 |
| Rumors | 34 |
| What Are Sororities? | 34 |
| How Do Sororities Choose Their Members? | 34 |
| How Do You Choose A Sorority? | 35 |
| Expenses | 35 |
| Formal Rush | 35 |
| Registration | 36 |
| Rush Advisors | 36 |
| Rush Week Schedule | 37 |
| Preferential Bidding | 37 |
| What to Wear—When | 38 |
| Open or Informal Rush | 39 |
| Summer Rush | 39 |
| Rules Governing Formal Rush Week | 39 |
| Sorority Directory | 41 |
| Alpha Chi Omega | 41 |
| Alpha Phi | 42 |
| Delta Delta Delta | 43 |
| Delta Gamma | 44 |
| Gamma Phi Beta | 45 |
| Kappa Alpha Theta | 46 |
| Kappa Kappa Gamma | 47 |
| Pi Beta Phi | 48 |
| Sigma Kappa | 49 |
| Zeta Tau Alpha | 50 |



Left to right: Jacqueline Sterner, Assistant Dean of Women; Florence Phillips, Dean of Women; and Martha H. Hall, Assistant Dean of Women.

Dear Miss Techsan:

You are now ready for a new and wonderful experience which can be only as meaningful as you wish to make it. There are so many opportunities for the coed at Tech that there should constantly be new areas for you to be exploring.

We are happy you have chosen Texas Tech; this is one of the first indications of your ability to choose wisely!

We hope that you will come by the office early in the school year. We are looking forward with a great deal of pleasure to knowing each of you personally.

Sincerely yours,
 Florence Phillips
 Martha Hall
 Jacqueline Sterner

GOVERNMENT

Association of Women Students



AWS officers (front row left to right): Dottie Sue Horchem, Second Vice President and WIDC President; Rebecca Wilson, First Vice President also Big-Little Sister Chairman; Mary Jane Hartley, Secretary; (back row left to right) Nita Haseloff, President; Pat Stooksberry, Treasurer; Jean Elliott, Reporter.

GREETINGS FROM TEXAS TECH AND AWS—

In a short time you will be enrolled at Tech and be an important part of its campus membership. To each of you we extend a hearty and sincere welcome.

For most of you, college will be a new way of life—new friends, new activities and a new and higher step toward adulthood. As a woman student, you will automatically become a member of AWS—the Association of Women Students. This means that from the very beginning you have an opportunity to participate in the women's program. What you do with this chance is up to you.

We of AWS are looking forward with great anticipation to knowing you and working with and for you. It is our deepest wish that your experience at Tech will be valuable to you, to the college campus and to the world.

See you in September,
Nita Haseloff

YOU AND AWS

When you enroll at Tech there is one organization of which you as a woman student automatically become a member. This is the Association of Women Students—known more simply as AWS.

The AWS purpose is to help you and other Tech coeds to get the greatest benefits from college life by promoting unity and fellowship among women students and by providing opportunities for leadership in worthwhile activities on campus. AWS acts as a coordinating body of all women's organizations in setting the standards for living and working together on campus.

IAWS

Tech's AWS is a member of a large national association—the Intercollegiate Association of Women Students. Its membership is comprised of women's governing units in over one hundred colleges and universities from coast to coast. These schools are divided into regions according to geographic location, and Tech is in the Southern Region. Every two years each region has a convention, and in alternate years a national convention is held. This is the year for a national convention which will be held at Michigan State University next spring.

The purposes of IAWS are to foster the exchange of ideas and information on subjects of mutual interest to the member schools; to encourage a growing awareness of the responsibilities of women students in local, national, and international affairs; and to work for the improvement of women's governing groups. The conventions have proven beneficial through the sharing of ideas and information about self-government procedures, judicial and legislative practices, and projects of the various schools. They have fostered the practice of good methods and parliamentary procedures. Along

with all this, they have made possible the formation of lasting friendships.

AWS COUNCIL

You are probably wondering how AWS works and what activities it sponsors. Tech's AWS is governed by the AWS Council. This Council is composed of six officers elected by women on campus, one representative from each women's organization, and a representative from each class. The Executive Council is comprised of the six officers: president, vice president (Big-Little Sister chairman), vice president (WIDC chairman), secretary, treasurer, and reporter. You may get a more detailed picture of the AWS organization structure by checking the chart on inside front cover.

AWS ACTIVITIES

AWS is expanding its program to take care of the needs of the women students. Some of the activities it sponsors are:

BIG SISTER-LITTLE SISTER PROGRAM—You will be adopted as a little sister long before you arrive on campus. Your big sister will write you during the summer and be here in the fall to help you get acquainted with campus life and to give you the benefits of her college experiences.

HOWDY PARTY—This event is scheduled during orientation week for all new Tech coeds. All the women leaders on campus will be at this party to welcome you and tell you about extracurricular activities and women's organizations at Tech. It's also a wonderful opportunity to meet people.

FRESHMAN ORIENTATION PROGRAMS—In the fall a series of programs will be conducted concerning social problems such as manners, grooming, dating, and orientating ourselves to college and dormitory life. There will be interesting speakers, movies, and other programs that you will not want to miss.

DAD'S DAY—On October 13, 1956, the fathers of all Tech students will be invited to the campus for a full day of activities (including the West Texas State vs. Texas Tech football game that night). AWS is proud to pay this tribute to our Dads and to have a part in making them "Kings for a Day."

LEGISLATOR WORKSHOP—A training retreat of all legislators in the dorms is conducted in the spring. Its purposes are to promote and improve student government in the dormitories, and to evaluate the year's work.

PENNY-A-MINUTE NIGHT—AWS sets aside a night before "Dead Week" each semester when dormitory girls can stay out an hour past the deadline. This night is Penny-a-Minute Night and for every extra minute you stay out, your date has to place a penny in a box.

WOMEN'S DAY—This is recognition day for women on our campus, and all women students dress in white. Tech's Outstanding Woman of the Year is elected and presented at the Women's Day banquet that night. Other recognitions include installation of AWS officers for the coming year, introduction of the new members of Junior Council and Forum, introduction of the new officers and legislators in the dorms and scholarship recognitions. It is really a full day—one to look forward to in May, 1957.

AWS COMMITTEES

It takes everyone's combined efforts to carry on the program of AWS. The regular committees, which will work along with any special committees needed for the year 1956-57, are:

AWS ACTIVITIES COMMITTEE—This committee is responsible for the AWS activities system. The committee keeps the activities card of every woman student on file, re-evaluating the activities system at

regular intervals, and (subject to the approval of the AWS Executive Council) has jurisdiction over the activities system and over all points of discussion.

DAD'S DAY COMMITTEE—This committee is responsible for planning the program for Dad's Day. The girls serving in this capacity work hard mailing letters of invitation to our Dads, and then preparing a full schedule of activities they will enjoy while they are here and remember long after Dad's Day has past.

AWS ORIENTATION COMMITTEE—This committee welcomes suggestions from the girls concerning the type of programs they are most interested in seeing and which would be most beneficial. The committee then builds a series of programs around these wishes, striving to get the best speakers and use the latest materials possible.

WOMEN'S DAY COMMITTEE—Long before Women's Day this committee is working hard laying the groundwork for a successful day. We all give the committee a silent "thank you" when at the end of Women's Day, the banquet is a success.

LET'S PURSUE THE COURSE OF STUDY

We have come to Tech to develop into emotionally and intellectually mature women prepared for a place in the adult world. Whether we intend to be teachers, businesswomen, career women or housewives, we will be improved individuals after our college education. So, study comes first!

BUDGETING ACTIVITIES

The college campus offers so many avenues of activity, that it is easy to lose sight of our primary objective and become completely wrapped up in extracurricular activities.

Unlike a business man who has a schedule of working hours laid out

for him, the student has no such regulation outside of class hours, and he must learn to budget his own time. A daily schedule, allotting time for study as well as relaxation, is of valuable service, and you will gain real satisfaction knowing that you have given the necessary time and effort to your studies.

CONCENTRATION-PROCURATION

A person with the ability to concentrate is well on the road to good study habits. Fortunately concentration is a talent that may be acquired. Tips in developing this ability are: divide your study hours into short concentrated periods; force your mind to remain on your work; read rapidly; allot each piece of work a certain time and complete it in that time; and work in surroundings conducive to concentration. The Tech Library is such a place and is usually populated with numbers of students in the evenings.

You and your roommate may study together in your own room, in which case it is a wise idea to slip a "Do Not Disturb" sign over the door knob. If you are a freshman, 8:30 p.m. hours will help you give the proper time to studies.

NOTES ON NOTE-TAKING

Taking good notes in class facilitates good study habits. Take notes in your own words and remember that the substance is important rather than individual words. Using outline form will help as organized notes will make your review much easier.

By practicing good study habits and reviewing thoroughly before exams, you will be able to send reports home that will make you and your parents proud.

Many positions in organizations require a certain scholastic standing, and a good grade point average is necessary for membership in campus honoraries. So study hard, then relax!

CLOTHES WOES?

If you are in a dither about what clothes to bring, just relax. Tech coeds follow the basic rule of good taste in clothing—simplicity.

Tech is a casual place, and you will be able to wear many of your high school clothes at college as the change really is not so great. To supplement these, here's an idea of just what you will need at Tech.

CLASSES

Casual dress is always worn for classes. Basic skirts and sweaters, and several blouses will see you through the school year. You will want several collars and scarves to compliment various combinations of your sweaters and skirts. Incidentally, head scarves are a must at Tech for those days when the wind is whipping across the Plains. You can always put your best foot forward in a pair of loafers, and you are off to class.

DATES

The cloths that you wear to class will serve well on many informal dates. Dark cottons and wool dresses with flats are often seen at movies and the Union dances. A good basic suit is a must. With the right accessories you can wear it to football games, receptions and church. Hats are not necessary for football games, but hats, purses and gloves are worn to receptions, teas and church.

For picnics Tech coeds wear anything from blue jeans and treader pants to Bermuda shorts. The rage at the moment is Bermuda shorts, worn with or without knee-length socks.

DORMS

For studying or lounging in the dorm, anything considered comfortable is worn; you may see shorty pajamas, dusters and housecoats. These can also be worn to dorm meetings after closing hours.

SPECIAL CLOTHES

For special occasions you will need a few dress clothes. A nice basic dress that can be subject to accessory changes is a wise buy. Taffeta and velvet separates are a real boon to the college girl, for you can make several outfits for semi-formal occasions. Both ballerina and full-length formals are in good taste here. Remember that nobody here has seen the dress you wore to the Junior-Senior prom at home, so bring it along.

The carefree Tech coed wears just enough make-up to give her a "wide-awake" look in that 8 a.m. class, and she always dresses to suit the occasion. To complete the picture, she conducts herself properly, remembering that she represents her college.

HOWDY

You will feel a tone of friendliness when you first arrive at Tech, and you will be anxious to join in this spirit of everyday welcome. Howdy Week and Howdy Dances get us started to school in this spirit. After that, you as a new citizen of our community will have a responsibility to do your part to keep it friendly.

We have learned that one of the best ways to get a lot of introductions is to give a lot of them. In order to introduce and meet people with poise, you will need to practice the techniques. If you want to brush up on the "how and when," here are some tips that may prove beneficial.

Always mention the woman's name first if a woman and man are being introduced, as the boy is always presented to the girl. Similar to this is the token of respect given an older person by presenting a younger person to him.

Men always rise for introductions. Women rise only when being introduced to an older woman, or when they wish to show special respect to

a distinguished person. A woman may shake hands with a man, but must remember to extend her hand first.

When introducing a large group, mention names of men and women in the order they are seated or standing.

In acknowledging introductions, it is courteous to repeat the name (it helps you remember it, too) and simply say, "Hello" or "How do you do." A smile can express your friendliness better than words.

Friendliness on our campus also extends to the faculty and other older people. You can't underestimate what your courtesy and kindness to all older people will do for you.

Remember, as you're packing for Tech, to put in a smile and a friendly spirit, and take them out first when you arrive.

AWS ACTIVITIES SYSTEM

For the purpose of distributing more evenly the major offices and responsibilities of individual students, AWS has devised the following classification of activities: the combination of points allowed any one individual per semester is 15.

This system is by no means a ranking of offices in order of importance, but merely an evaluation of them according to time and responsibility involved.

STUDENT BODY OFFICERS

| | |
|--------------------------------|----|
| Student Body President | 15 |
| Secretary | 10 |
| Vice President | 10 |
| Business Manager | 10 |
| Student Council Representative | 7 |

AWS

| | |
|--------------------|----|
| President | 10 |
| Vice President | 6 |
| Treasurer | 6 |
| Secretary | 5 |
| Reporter | 5 |
| Standing Committee | |
| Chairman | 1 |

PANHELLENIC

| | |
|---------------|---|
| President | 8 |
| Rush Chairman | 6 |

SORORITIES

| | |
|---------------------|---|
| President | 9 |
| Pledge Trainer | 6 |
| Treasurer | 6 |
| Other Major Offices | 5 |

TREADOR

| | |
|------------------|----|
| Editor | 10 |
| Assistant Editor | 6 |

LA VENTANA

| | |
|------------------|----|
| Editor | 10 |
| Business Manager | 8 |
| Assistant Editor | 6 |

TECH UNION PROGRAM

| | |
|----------------------|----|
| President of Student | |
| Union Activities | 10 |
| Vice President | 6 |
| Secretary | 6 |
| Treasurer | 6 |
| Other Offices and | |
| Committee Chairmen | 4 |

BSO

| | |
|----------|---|
| Chairman | 6 |
|----------|---|

CLASS OFFICERS

| | |
|------------------------|---|
| Junior and Senior | 5 |
| Freshman and Sophomore | 4 |

DORMITORIES

| | |
|--------------------|---|
| President | 6 |
| AWS Representative | 6 |
| Social Chairman | 4 |
| Other Offices | 3 |
| Legislators: | |
| Freshmen | 3 |
| Upper Classmen | 2 |
| Advisory Council | 1 |

HONORARY

| | |
|--------------------------|---|
| Forum President | 6 |
| Junior Council President | 5 |
| Alpha Lambda Delta | |
| President | 4 |
| Other Major Offices | 2 |

DEPARTMENT, RELIGIOUS AND MUTUAL INTEREST GROUPS

| | |
|---------------------|---|
| Presidents | 6 |
| Other Major Offices | 3 |

CONSTITUTION AND BY-LAWS

OF THE ASSOCIATION OF WOMEN STUDENTS OF TEXAS TECHNOLOGICAL COLLEGE

ARTICLE I

Name

SECTION 1. The name of this organization shall be the Association of Women Students of Texas Technological College.

ARTICLE II

SECTION 1. The objects of the Association of Women Students shall be:

1. To act as a coordinating body of all women's organizations in setting the standards of living and working together on the campus.
2. To promote high scholarship among the women students at Texas Tech.
3. To aim for strong student government and a mutual understanding between administration and students.
4. To strengthen the spirit of unity and fellowship among the women of Texas Tech and to encourage closer relationships between town girls and the girls on the campus.
5. To develop leadership and promote school spirit through the encouragement of women's participation in government and college activities.

SECTION 2. The Association of Women Students shall operate under the powers set forth in this Constitution.

SECTION 3. Additional powers will be granted the council each year according to the progression and capability exhibited by the previous council and Association.

ARTICLE III

Members

SECTION 1. Every woman student enrolled at Texas Tech shall be a member of the Association.

SECTION 2. The Dean of Women and an Assistant Dean of Women shall be ex-officio members of the organization. An Assistant Dean of Women shall act as an advisor to the Association.

SECTION 3. Every woman student of Texas Tech who resides in private homes is also eligible for membership in the "Town Girls' Club." (This organization is set up for town girls, in the hope that through such an organization a closer unity can be gained between the town girls and the girls residing on the campus.)

ARTICLE IV

SECTION 1. The following officers shall serve as the executive body of the Association of Women Students and of the AWS general council.

SECTION 2. Officers shall be:

1. President
2. Vice President—Chairman of the Big Sister-Little Sister Program.
3. Vice President—Chairman of Women's Inter-Dormitory Council.
4. Secretary
5. Treasurer
6. Reporter

SECTION 3. Qualifications for the officers:

1. They shall maintain a 1.5 over-all grade

- point average for all the time they have been in school and a 1.5 grade point average for the previous semester at Tech.
- They shall have been enrolled in Tech for at least one semester before being nominated or elected.
 - The president and vice presidents shall have been a member of the AWS Council for at least a year previous to the term they serve as an officer.
 - The president shall be of senior classification when she serves. She must have completed 90 credit hours at the time of taking office in the fall.
 - The vice presidents, secretary, and treasurer shall be at least a junior at the beginning of their term of office.
 - The reporter shall be at least a sophomore at the beginning of her term of office.
- SECTION 4. Elections.**
- The officers shall be elected by the women students of the college.
 - The term of office for officers and members of the AWS Council shall be one school year.
 - A nominating committee composed of graduating members of the council shall prepare a slate of officers to be presented at a nominating assembly, where other nominations of qualified girls may be made from the floor.
 - These names shall be posted one week before a general election during the spring semester, the exact date to be decided by the council.

ARTICLE V

Duties of the Officers

- SECTION 1. President**
- It shall be the duty of the president to preside at the meetings of the Association.
 - She shall exercise supervision over the activities of the Association and be alert to the needs of the campus.
 - She is also president of the AWS Council and presides over this governing body.
 - It shall be the duty of the president to see that the provisions of the Constitution are carried out.
 - She shall have the power to appoint the chairman of all committees except those standing committees named in the Constitution.
 - She shall act as an ex-officio member of all committees.
 - She may call a meeting of the council or of the Association with the consent of the secretary. Anything which pertains to the general interests of the organization and which does not encroach upon the other officers will be her duty.
- SECTION 2. Vice President—Big Sister-Little Sister Chairman**
- It shall be the duty of the vice president to preside in the absence of the president.
 - She shall assist the president in the direction of the affairs of the Association and the council and shall assume the duties of the president in case the office of the president is left vacant.
 - She shall act as the chairman of the "Big Sister Committee."
 - She shall handle the details in connection with the AWS elections.
- SECTION 3. Vice president—Women's Inter-Dorm Council Chairman**
- She shall preside at the meetings of the Women's Inter-Dorm Council.
 - She shall keep a complete record of the activities of the Women's Inter-Dorm Council and shall make regular reports to the AWS Council.
- SECTION 4. Secretary**
- It shall be the duty of the secretary to keep the record of the actions and meet-

- ings of the Association and the council.
- She shall take care of all council correspondence.
- She shall file and preserve all reports and papers.

SECTION 5. Treasurer

- It shall be the duty of the treasurer to collect all funds and care for all bills authorized by the president.
- She shall have charge of the Association funds.
- She shall keep a strict and permanent record of all expenses.
- She shall make a financial report annually and present a proposed budget for the following year.

SECTION 6. Reporter

- It shall be the duty of the reporter to report and publicize all activities of AWS through "The Toreador," town papers, campus bulletins, alumni news, and in any other possible way.

ARTICLE VI

AWS General Council

SECTION 1. The purpose of the council shall be to serve as a governing body for the Association and to act as a coordinator of all campus activities engaged in by women students. It shall recommend to the executive council desired changes in the by-laws of the Association.

SECTION 2. The council shall be composed of the six officers elected by the Association of Women Students, one girl elected by each of the four classes, and one representative from each of the women's organizations on the campus. At present these are: Alpha Chi Omega, Alpha Lambda Delta, Alpha Phi, Book Reviewers, Casa Linda, Delta Delta Delta, Delta Gamma, Drane Hall, Forum, Freshman Class, Gamma Phi Beta, Home Economics Club, Horn Hall, Junior Class, Junior Council, Kappa Alpha Theta, Kappa Kappa Gamma, Knapp Hall, Major-Minor Club, Mu Phi Epsilon, Panhellenic, Phi Gamma Nu, Phi Upsilon Omicron, Pi Beta Phi, Senior Class, Sigma Kappa, Sophomore Class, Tau Beta Sigma, Theta Sigma Phi, Town Girls' Club and Zeta Tau Alpha.

SECTION 3. The council shall meet every week unless otherwise stated.

SECTION 4. In case the office of the president is left vacant, the vice president whose duties include the Big Sister-Little Sister program and elections shall become president, and a new vice president shall be elected by the council. If for any reason a vacancy occurs in any of the other elected offices, the council shall elect someone to fill the vacancy.

SECTION 5. Scholastic eligibility for the members of the council shall be a 1.0 overall grade point average, as well as a 1.0 grade point average for the preceding semester.

SECTION 6. If it is impossible for a council member to attend a meeting, it is permissible to send an alternate.

SECTION 7. The penalty for missing a meeting without adequate excuse or the attendance of an alternate shall be one dollar (\$1).

SECTION 8. Members of the council who are absent twice in succession without adequate excuse or the attendance of an alternate shall be considered inactive. The secretary shall notify the organization which they represent that their organization has become inactive and that the organization should send another representative.

SECTION 9. The secretary should be notified by the absent member of the reason for the absence before the next meeting.

ARTICLE VII

Women's Inter-Dorm Council

SECTION 1. Membership

- The vice president of AWS shall serve as chairman of the Women's Inter-Dorm Council.
- Other members of the council shall consist of the vice presidents and AWS representatives of each dormitory and Casa Linda.
- The chairman shall appoint one of the members to serve as secretary of the council.

SECTION 2. Duties of the Women's Inter-Dorm Council

- The Women's Inter-Dorm Council shall act in collaboration with the Dean of Women and legislature on matters of group living.
- The Women's Inter-Dorm Council shall serve as the policy making body of the women's residence halls, and shall submit recommendations to be approved by the AWS Council and the Dean of Women.

ARTICLE VIII

Amendments

SECTION 1. The Constitution may be amended at a regular meeting of the Council of the Association of Women Students provided that there are two-thirds of the mem-

bers present and that the amendments have been read at the council meeting preceding the one at which the vote is taken.

SECTION 2. The proposed amendments must be posted immediately after the meeting at which they are presented to the council.

ARTICLE IX

Committees

SECTION 1. The Nominating Committee shall be composed of the graduating members of the council.

SECTION 2. There shall be an Executive Committee composed of all the officers of AWS, and it shall be their duty to organize and eliminate unnecessary details in the material to be covered in council meetings.

SECTION 3. There shall be such other committees as the Association or council may demand.

SECTION 4. The president shall be an ex-officio member of all committees.

ARTICLE X

National Convention

SECTION 1. The expenses of the official delegates to the National Convention shall be paid by the Association of Women Students.

SECTION 2. These delegates shall be the incoming president and the outgoing president or their alternates.



WOMEN'S CREED

- I believe in the women of this college, in their ideals and sincerity of purpose.
- I believe in my ability to use wisely the privileges of self government and will strive to accept its responsibilities.
- I believe that my purpose in college is to learn to think. I will present my best efforts in seeking what is true and will regard the classroom as a place for unquestionable honesty.
- I believe in myself. Recognizing both my strengths and weaknesses, I will strive to follow the Rule of Life—that of charity toward others and service to all.

DORMITORIES

Women's Inter-Dorm Council

A ROOF O'ER YOUR HEAD

While planning your college career, one of the first things you will want to consider is where you plan to stay. Freshmen women students are given rooms in Drane Hall, the freshman dormitory until it is filled and then they are placed in the two dormitories normally set aside for upperclass women students, Horn and Knapp Halls. These arrangements are all made through the Office of Room Reservations and should be made as early as possible to insure being able to stake a claim to a room. Casa Linda is a co-op house on the campus where 18 girls reduce their college expenses by sharing the work of preparing their meals and keeping the house clean. Application for housing in Casa Linda is made to the Assistant Dean of Women in charge of dormitories.

The college years are a time of transition in everyone's life. This stage is "dubbed" by the psychologists as late adolescence or young adulthood. It simply means that the typical entering college student has long since left her childhood days but has not yet acquired the necessary maturity to live in an adult world, which after all, is a large part of the purpose of college life—to prepare young people through both intellectual and social development to accept the responsibilities of world citizenship on an adult level.

You may say, "That is all well and good, but what does it have to do with my living in a dorm?" Simply this, a dormitory is composed of some 320 girls from various backgrounds, of different interests, and often, with varied views on life. Learning to share a room, to consider the rights of the girl across the hall who needs to study when you may happen to be in a "partying" mood, and to co-operate with the dormitory staff are all a part

of practicing the fundamental principles of democracy.

"YOUR ROOMMATE'S ROOMMATE"

(Taken from a book by the same name, Margueritte Harmon)

Occupying a position of major importance in your college life will be your living partner, your roommate. Whether you have lived next door to "Sally Ann" for ten years or are looking forward to meeting her when you arrive at Tech, you should remember that a roommate is an extra special person and should be treated as such. Becoming a roommate is not something that should be taken up lightly, but it deserves your very best.

Whether you chat over the backyard fence or converse via U.S. Mail Service, roommates need to decide about various details of equipping their rooms. Your room will be furnished with two twin beds, a dresser, desk and two chairs, lavatory, and a wastepaper basket—the rest is up to your own discretion. However, the following list may help you: iron, ironing board, desk light, pillow, broom and mop, dresser scarves, bulletin board, radio, record player, and throw rugs. Many girls like to wait until they arrive at Tech and know the color and location of their room to decide on curtains and bedspreads. However, in case you might be interested, the windows in Drane Hall measure 41" x 68" and in Knapp and Horn Halls the measurements are 40" x 66." Remember, the dormitory walls are plaster and a type of curtain rod that does not require nails for installation must be used.

While you are packing for college, tuck your biggest, friendliest smile in the trunk just before you close it so that a friendly personality will be the first thing you unpack when you arrive at Tech . . . a smile melts away many, many problems.

A FRIEND IN DEED

As entering students, you are in for a special treat in meeting and getting to know the wonderful helpful and understanding members of the Dean of Women's staff. Earlier in TIPS TO THE NEW TECHSAN you have been introduced to the Dean of Women and the two Assistant Deans. Now it is time for you to become acquainted with Mrs. Alice May, Counselor of Drane Hall; Miss Lucille Pontius, Counselor of Knapp Hall, Mrs. Madeline Moore, Resident Hostess of Knapp Hall; and Mrs. Dorothy Garner, Counselor of Horn Hall. Some of the most meaningful experiences of college days come from the friendships one forms. Be sure not to deprive yourself of the privilege of knowing your dormitory counselor and/or resident hostess . . . they are interested in you and are your friends before you even unpack.

DORMITORY GOVERNMENT

The administration of Texas Tech believes in student government and is glad to extend the privileges of self-discipline as far as the students themselves are capable of accepting the responsibilities which this incurs. Every dormitory resident is automatically a member of the dormitory association, which has as its purpose as stated in the constitution, "to equip each student for active and cooperative citizenship through participation in democratic self-government." You will probably want to refer to the chart on inside front cover to see just where you fit into the picture of student government.

DORMITORY LEGISLATURE—The official governing body of each dormitory is the Legislature, composed of girls elected each spring by the dormitory association. These girls live in specified rooms on each wing of the dormitory and represent the

viewpoint of the girls on that wing in legislator meetings and are responsible for the welfare of their particular wing in the dorm.

The dormitory officers for the following school year are elected in the spring. The elected president of Knapp Hall for the year 1956 to 1957 will be Marguerite Winder; Horn Hall President; Joan Roberts; and the Drane Hall President, appointed by the Assistant Dean of Women after receiving recommendations from the upperclass and freshmen legislators of the dormitory and the resident hostess, will be Anita Hope.

Legislator meetings are held every two weeks, alternating Monday nights with the Advisory Council. Wing meetings are held at 10:00 p.m. the Tuesday following the legislator meetings. All residents, including seniors, are to attend wing and hall meetings.

THE ADVISORY COUNCIL—The Advisory Council in each dormitory is set up under the dormitory student government. The purpose of this selected body is to hear cases of girls who have broken dormitory regulations. Those cases reflecting on the reputation of the college or those involving general college rules are referred to the Office of the Dean of Women.

HOW, WHEN, AND WHERE, TO DO WHAT!

YOUR MAIL is put up in a mailbox assigned to you when you register in the dormitory. The switchboard operator puts up the mail which is delivered at noon and evening. Outgoing mail is collected at these hours. Mail addressed to you should include: your name, box number, dormitory, Texas Tech College, Lubbock, Texas. You will be notified by the Campus Post Office in the Administration Building if you have an insured package, registered letter, etc.

The DINING HALL is open for meal service as follows:

Breakfast 7:00-8:00
Lunch 11:45-12:30
Dinner 5:30-6:15

There are LAUNDRY and drying rooms in each women's dorm with automatic washers and dryers for your use. A quarter is charged to use the washing machines.

All needed REPAIRS should be reported to the switchboard office by filling out a prepared form. You may request such things as replacement of electric light bulbs in this manner.

A large STORAGE room is provided in each dormitory where trunks and luggage are stored. Check with the Resident Hostess for the key.

ELECTRICAL CHARGES are made on radios, record players, irons, hair dryers, etc., that are used in the dormitory. These charges are added to your room and board each month by the Office of Room Reservations and are due prior to the sixth day of each month.

Local TELEPHONE CALLS are accepted from 8 a.m. to 10 p.m. The pay telephones in the game room or lobby of the dorm are available at all times. Long distance calls must be made only on these pay phones. Telephone manners are important, so PLEASE do not monopolize the phones. Always replace the telephone book for the next person. You'll also need to learn the buzzer system:

A Buzzes are:

1 long telephone
1 long, 1 short lounge

B Buzzes are:

2 long telephone
2 long, 1 short lounge

GUESTS IN DORM

Students may have guests in dormitories only on Friday and Saturday night except by special permission given by the Assistant Dean of Women. All overnight guests must register with the Resident Hostess in the dormitory, and a guest fee (with the exception of mothers of residents) of 50 cents is charged each guest upon registering. Guests maintain the hours of their student hostess. The hostess is responsible for the conduct of all guests and is also assigned any late minutes her guest might receive. Guests sign in and out of the dormitory on a guest sign-out sheet.

When girls are guests in another dormitory, the same procedure for signing out is to be observed as for any overnight in Lubbock.

DORMITORY REGULATIONS

AWES AND WOMEN'S INTER-DORM COUNCIL

A. SIGN OUT AND SIGN IN. For safety and service, students are required to sign out if absent from the dormitory after 7:30 p.m. Each girl must sign out and in for herself. In emergency, or if you have failed to sign out, you may call your Counselor or Resident Hostess to sign you out.

B. REGULAR CLOSING HOURS

Entering Freshmen
(until 9 weeks grades)
Mon-Thurs. Friday Saturday Sunday
8:30 p.m. 12 p.m. 1 a.m. 11 p.m.
Upperclassmen
10 p.m. 12 p.m. 1 a.m. 11 p.m.
Seniors
11 p.m. 12 p.m. 1 a.m. 11 p.m.

C. WEEKEND AND OVERNIGHT SIGN OUTS. A General Permission card signed by your parents must be on file in the dormi-

tory office before you are permitted to sign out overnight. It is each student's responsibility to know the permissions granted her by her parents.

Students do not spend week nights out of town or at home except in an emergency and with special permission from the dormitory counselor and/or the students' parents. Weekend nights are Friday and Saturday nights.

1. WEEKEND OUTSIDE LUBBOCK. Fill out weekend slip in office before 8 p.m. Sign out on sign-out card when you leave dormitory.

2. WEEKEND OR OVERNIGHT IN LUBBOCK. Contact your Counselor or Resident Hostess before 4 p.m. so that she may call your hostess for confirmation of the invitation. Students may stay only with families or married couples in Lubbock. Students must make sure the hostess has been contacted and her sign-out card approved by the dormitory before she leaves. Freshmen are permitted one week night Monday through Thursday per semester in Lubbock. Upperclassmen have three week nights per semester.

D. RETURN FROM VACATION OR WEEKEND. All students return to the dormitory from an official college holiday or weekend by 11 p.m. If in an emergency a student is delayed, she should call her Counselor so that she will know the whereabouts of the student.

Students returning to school from a holiday or weekend out of town do not spend Sunday night in Lubbock unless prior arrangements have been made with the dormitory Counselor before the student leaves for the weekend. This is classified as "special permission" and is not considered as a regular week night in Lubbock.

E. SPECIAL PERMISSIONS. The Counselors of the dormitories

may grant special permission for the following events:

1. Students attending college-sponsored events that run past 10 p.m. These events include Tech Artist Courses, College plays, and College sports events.

2. Students desiring to attend outstanding community events NOT under the auspices of the College.

If the event is held on campus, students are expected to return to the dormitory 15 minutes after the close of the performance. If the event is off campus, time is 30 minutes after the close of the event.

F. EMERGENCY PERMISSIONS. In an emergency or an unusual happening, the Counselor may grant special permissions.

G. QUIET HOURS. Quiet Hours must be maintained at all times with the following exceptions:

11:30-1:00 p.m. Lunch Hour

5:00-7:00 p.m. Dinner Hour

"Reasonable" quiet must prevail during exceptions. Twenty-four hour quiet hours are always maintained during examination periods.

H. WIDC AND AWS REGULATIONS. For failure to cooperate with the dormitory or other AWS regulations, the student may be asked to appear before the Advisory Council of the dormitory.

Restriction of "Social privileges are as follows:

Lateness:

Failure to Sign In three times—one night campus.

Failure to Sign Out three times—one night campus.

Up to 15 minutes accumulated lateness—No penalty.

Fifteen minutes late—weekend campus. (two nights)

Thirty accumulated late minutes—two consecutive weekend campuses.

Over 30 minutes late per semester—student must appear before the Advisory Council.

Any student who wishes to appeal her case may request that her case be reviewed by the AWS Judiciary Board. The Advisory Council also has the right to refer cases to the AWS Judiciary Board.

I. MEN CALLERS. Men callers are not permitted to visit in women's dormitories until after the lunch hour. Men, however, may come into the lobby to call for a girl after 8 a.m. Monday through Saturday. Sundays, men may visit in the lounge after 8:30 a.m.

J. SOCIAL CONDUCT. Tech women do not wear bluejeans, treads, or bermuda shorts in the dormitory lounge, Student Union, or classrooms. Students should dress appropriately in the dining hall. Shorts, bluejeans, brunch coats, bermuda shorts, or house shoes are not worn. The exception to this rule is Saturday, "casual dress" day, and jeans and pedal pushers are permitted in the dining halls.

Tech women are in accord with Emily Post in believing that good taste is consideration for others. This includes remembering that even though Tommy Techsan may be the "love of your life," public display of your affection is embarrassing to others. Therefore, obvious display of affection is extremely bad taste and is not permitted in the lounge, lobby, or entrances to the dormitory.

Permission to eat early or to eat at the head of the line will be granted to girls having 6:30 evening classes or in emergency situations. Cutting in line shows inconsideration for the other residents of the dining hall.

Every woman student is expected to conduct herself in a manner which reveals good taste and reflects the

judgment expected of Tech students. Good taste does not include visitation to men's apartments without chaperones.

K. COLLEGE REGULATIONS. The college prohibits the possession or consumption of alcoholic beverages on the campus or in college buildings, and in student residences, both on-campus dormitories and off-campus housing. Students are held individually responsible for compliance with this regulation.

Selling or peddling or offering for sale is strictly prohibited on the campus and in college buildings without permission from the Comptroller of the College. Permission to sell in the dormitories will be granted only with the approval of the Assistant Dean of Women or Assistant Dean of Men and the Comptroller. Any person selling on Tech campus should be asked to show a written statement of permission to sell signed by the Vice-President-Comptroller of the College.

AWS REGULATIONS:

Men's Rush Parties

1. Except as hostesses, Tech women are not permitted to attend men's fraternity rush parties (no more than 10 hostesses at each party).
2. Tech women may not act as cigarette girls at *any* men's organization on campus.

Serenades

"The fraternity or other organization desiring to serenade should contact the dormitory Counselor by 5 p.m. of the Wednesday night the serenade is planned and report the time within 5 minutes when they will serenade, in order to avoid conflicts with other serenading groups. All serenades are to be over by 11 p.m."



Seated left to right: Ann Collins, Joan Z. Roberts, and Erma Lilly. Standing left to right: Nancy Roberts (on Ann's chair), Pat Stooksberry, and Rose Green.

HORN HALL

Horn Hall is not a home away from home to its residents—it is actually a great big home in its own right—complete with a 350-member family. Big, but friendly.

Aside from the numerous "sisters" you will discover at Horn, there will be a dorm mother and a counselor to whom you can take your troubles and introduce your dates. Just like your own mom, you'll find the mother here to be ready and usually willing to join in the festivities. She is tolerant of your shortcomings—and late parties—but manages at the same time to keep everything under control. Remind you of your home?

The "head" of the Horn Hall family is the Legislature. Each wing of the dorm elects a representative to voice its opinion on the many problems that have a way of coming up.

Like in your own home, too, you will find that responsibilities go hand-in-hand with the privileges of group living. Every girl is responsible for keeping her room neat, and can use the laundry facilities for doing her own clothes—but with so many people in the same boat, there is not really much work to it—everything seems to be fun at Horn.

Finally, this family has its share of parties, too. Frequently, one of the all-male "families" from across the way is invited over for a mixer—usually a dance or dinner.

You will like Horn—wait and see!

OFFICERS

| | |
|------------------|----------------|
| Joan Z. Roberts | President |
| Kay Porter | Vice President |
| Donell Phillips | Secretary |
| Shirley DuPriest | Treasurer |
| Erma Lilly | AWS |



Candle Lighting Ceremony.

KNAPP HALL

Hi newcomer! Why not be one of the 350 girls who will live in Knapp Hall this fall? Most of our residents are upperclassmen, but we do have a few freshmen to add spice and variety. Too, we know you will appreciate the spirit of cooperation and friendly atmosphere at Knapp.

Knapp Hall is located just across the street from the music building on campus, and is conveniently situa-

ted for walking to classes. During the past year, a new infirmary was erected next door to our dorm.

As in the other two girls' dorms, Knapp has a student government composed of a president and twenty-four legislators. The freshmen in the dorm also elect their representative to the legislature. As soon as you are settled you will want to get acquainted with the legislators on your wing.

Social events in the dorm include a Christmas party with caroling to the other dorms. Monthly birthday parties and mixers with the boys' dorms are regular events on our social calendar. Occasionally we have all-dorm parties. We decorate the dorm during the Christmas season and the dining hall is decorated for special occasions.

We'll be seeing you.

OFFICERS

| | |
|-------------------------|----------------|
| Marguerite Winder | President |
| Frances Smathers | Vice President |
| Patricia Curry | Secretary |
| Mary Cooper | Treasurer |
| Marilyn Dunagan | AWS |



Christmas Carols.



Just Some of the Girls.

CASA LINDA

Casa Linda is for girls attending Texas Tech who wish to share in a plan of cooperative living. The house will accommodate 18 girls, selected by the Dean of Women, in its eight double rooms and two singles. The rooms are furnished with two beds, two chests, a double desk, and have two closets.

Life in Casa Linda has many advantages. The atmosphere is casual; in fact, it may be compared to a home with an over-abundance of sisters. Each girl has a sense of importance because she is essential to the group as a whole. Too, Casa Linda is economical because the operating expenses are alleviated by the duties performed by the girls.

These duties are distributed so that they conform as closely as possible with individual schedules. Each girl receives one duty each day during the semester, ranging from meal preparation to doing dishes or cleaning the house.

Casa Linda is governed by two groups of officers—administrative and executive. The business manager, responsible for all business matters

connected with operation, and the house director, responsible for the general conduct of the girls and assignment of duties, comprise the administrative division. The president, vice president and secretary-treasurer make up the executive branch. The house residents observe all dormitory regulations.

In addition to the other rooms, Casa Linda has a living, or reception room, dining room, kitchen and laundry. The dining room can be converted into a study room by pulling out a partition. The laundry and drying room come complete with automatic washer and dryer, an iron and ironing board. Linens and sheets are sent out weekly without extra expense to residents.

To newcomers to Tech, Casa Linda girls say, "For all the conveniences of home, welcome to Casa Linda."

OFFICERS

| | |
|----------------------|----------------|
| Phyllis Sears | President |
| Dorothy Folytn | House Director |

Halloween Party.





Trimming the Tree.

DRANE HALL

Since Drane Hall is the official home of new entering freshmen, it is especially geared to making your initial experiences with dorm life at Tech happy ones.

The year gets underway with a series of dances, parties, and sing-song sessions, and lets up but very little as the term progresses. The dorm is also serenaded at least once a week by campus fraternities, and the lounge and game rooms are usually well-stocked with male visitors.

Drane is governed at first by 12 upperclassmen legislators who help get the newcomers started off on the right foot. After a few weeks, 12 freshmen are elected to join their ranks in running the dorm.

There are a number of things that newcomers have to learn about dorm life. Ready and willing to help with

such things are your resident hostess, counselor, and student assistants.

They'll tell you about your mail box, the buzzer system used to call you to the phone or tell you when you have a visitor. You'll want to find out, too, about the handy laundry facilities, and the comfortable game room for leisure moments. And there's much, much, more.

All in all, Drane is a wonderful place to begin your college career. You'll have many exciting new group experiences, and will always enjoy the casual closeness of your 300 neighbors.

OFFICERS

| | |
|----------------------------|----------------|
| Anita Hope | President |
| Peggy Miller | Vice President |
| Gaynelle Williams | Secretary |
| Betty Alice Lovelace | Treasurer |
| Sammie Fowler | |
| Sue Flowers | Co-Publicity |
| | Chairmen |

Room Activities.



HONORARIES

Outstanding Scholarship Achievements

ALPHA LAMBDA DELTA

Alpha Lambda Delta, national honorary fraternity for freshmen women, is open to students who have 15 hours to their credit and a 2.5 grade average for either semester of their freshman year.

Founded at the University of Illinois in the spring of 1924, Alpha Lambda Delta became a national organization in 1926 with the installation of a chapter at Purdue University. By 1953 total membership had reached 24,448 with 71 chapters.

Purposes of the society are the promotion of intelligent living and a high standard of learning as well as the encouragement of superior scholastic attainment among freshmen women in institutions of higher learning.

Alpha Lambda Delta gives an annual tea in the fall as an honor to all freshmen women. New initiates are complimented with a spring banquet given jointly with Phi Eta Sigma, national honorary fraternity for freshmen men. A \$100 scholarship is awarded to a freshman woman student each year by the organization.

OFFICERS

| | |
|------------------------|----------------|
| Alice Wells | President |
| Jeanette Reames | Vice President |
| Sara Sheveland | Secretary |
| Avonlee Fentress | Treasurer |
| Bobby Blocker | Reporter |
| Margaret Anger | AWS |



Alice Wells



Sylvia Dietering



JUNIOR COUNCIL

Twenty junior women at Texas Tech are chosen each year for membership in Junior Council, one of the oldest women's organizations on the campus.

Based on outstanding scholarship and leadership, membership in Junior Council requires a 2-point grade average.

Service projects during the past year included a "Books for Asia" campaign and assisting with campus elections. Junior Council also worked with the Quarterly Club on the Paul W. Horn Memorial Fund.

OFFICERS

| | |
|------------------------|---------------------|
| Sylvia Dietering | President |
| Mary Randal | Vice President |
| Joanne Holmes | Secretary-treasurer |
| Janet Yancy | AWS Representative |
| Carol Chancey | Historian |



Virginia Carr



FORUM

Forum, an organization composed of senior women, has a maximum of 20 members chosen on the basis of scholarship, leadership and character.

The purpose of the organization is threefold: to promote all worthy undertakings, organizations and movements of the student body; to create among the student body an unselfish interest in the welfare of the college and its students; and to try to give every woman student a part in some extracurricular activity in which her interest may be broadened and her service made fruitful.

Forum was founded on the Texas Tech campus in 1927 by Mrs. Mary W. Doak, dean of women. At that time Forum was made up of 15 junior and senior women. Since 1946, only senior women with a minimum overall average of 1.8 have been elected to membership.

Forum has been in correspondence with Mortar Board, national senior women's honorary, since 1929. Mortar Board has sent Forum two visitors for the purpose of inspection. In the fall of 1954, Miss Thelma Lockwood, national secretary, made a visit, and in the spring of 1956, Mrs. Carl G. Swanson Jr., national vice president, was on the campus.

OFFICERS

| | |
|-----------------------|----------------|
| Virginia Carr | President |
| Marilyn Snethen | Vice President |

| | |
|------------------------|--------------------|
| Jackie Bateman | Secretary |
| Diane Thomas | Reporter |
| Josephine Garcia | AWS Representative |

MU PHI EPSILON

Mu Phi Epsilon, national professional music fraternity for women, was installed at Texas Tech in 1952 as Epsilon Pi Chapter.

Founded November 13, 1903, at the Metropolitan College of Music in Cincinnati, Ohio, Mu Phi Epsilon requires a 2-point grade average for pledging. Members must also possess qualities of musicianship, leadership and friendliness.

Activities of Epsilon Pi Chapter during the past year included a musical, "Autumn Fantasy," co-sponsored by Phi Mu Alpha, men's professional music fraternity. Christmas activities centered around projects of service to others and included caroling in hospitals and orphans' homes. A recital of contemporary music is also presented each year.

Epsilon Pi Chapter presents an annual scholarship to a talented and deserving member. For the first time this year, a strings scholarship will also be awarded to a freshman.

OFFICERS

| | |
|------------------------|---------------------|
| Carole Tollin | President |
| Sandra Hemmle | Vice President |
| Sarabeth Simpson | Recording Secretary |
| Jan Berry | Treasurer |



Carole Tollin

PHI GAMMA NU

A national and professional sorority in business administration, Phi Gamma Nu was established on the Texas Tech campus in 1949 as Lambda Chapter.

To be eligible to pledge, a woman student must be working toward a degree in business administration, must have a 1.5 grade average, and must have completed a minimum of six hours in commerce.

Each year Lambda Chapter sponsors a dance, plans a fall and spring banquet, visits business firms in Lubbock, and awards a scholarship key to the senior girl with the highest scholastic average.

Objectives of Phi Gamma Nu are "to bind the members into closer friendship and loyalty to one another; to promote a standard of high scholarship; to encourage participation in school activities; to uphold the interests of the Alma Mater; and to further interest in civic and professional enterprise.

OFFICERS

| | |
|-------------------------|--------------------|
| Joanne Holmes | President |
| Juanita Haseloff | Vice President |
| Betty Scarborough | Secretary |
| Christine Foster | Treasurer |
| Jane Cobb | Pledge Captain |
| Shirley Crook | Scribe |
| Ima Jane Sneed | Historian |
| Yvonne Mitts | AWS Representative |
| Betty Pitzer | Parliamentarian |



Joanne Holmes



Virginia Carter

PHI UPSILON OMICRON

Girls majoring in home economics are elected to Phi Upsilon Omicron on the basis of character, scholarship, leadership and campus activities.

A national honorary professional fraternity for women majoring in home economics, Phi Upsilon Omicron members seek to advance and promote home economics as their profession and to establish and strengthen friendships among fellow students.

To be eligible for membership, a coed must be a second-semester sophomore with an overall grade average of 1.8 or better.

OFFICERS

| | |
|-----------------------------|-------------------------|
| Virginia Carter | President |
| Marian Wilson | Vice President |
| Beverly Garner | Recording Secretary |
| Frances Allison | Corresponding Secretary |
| Glenda Knowles | Treasurer |
| Barbara Thruston | Chaplain |
| Eleanor Reynolds | Historian |
| Edwina Schovajsa | Candle Editor |
| Priscilla Baumgardner | Librarian |
| Dorothy Ware | Marshall |
| Bette McGehee | AWS Representative |
| Dorothy Garrett | Money-making Chairman |

PI OMEGA PI

Pi Omega Pi, national honorary fraternity for business education majors, was installed at Texas Tech in 1952 as Gamma Xi Chapter.

Organized to create and encourage interest and promote scholarship in business education, Pi Omega Pi aids in civic betterment, encourages high ethical standards in business and professional life and teaches the ideal of service as the basis of all worthy enterprise.

During the past year Gamma Xi Chapter conducted shorthand labs each semester for the benefit of students who felt they needed extra help in dictation practice. Other projects included keeping the business education bulletin board up-to-date and assisting the business education department in all district and regional meetings and contests held annually on the campus.

An initiation banquet highlights social functions which also include luncheon meetings.

OFFICERS

| | |
|------------------------|---------------------|
| Juanita Haseloff | President |
| Shirley Crook | Vice President |
| Robby Dale Davis | Secretary-treasurer |
| Molly Morrison | Reporter-historian |



Juanita Haseloff



Kathy Veazey

TAU BETA SIGMA

Tau Beta Sigma, national honorary fraternity for bandwomen, was founded at Texas Tech in 1939 by a group of bandwomen who felt that the growing number of girls in college bands increased the need of a women's organization based on the same principles as Kappa Kappa Psi, national honorary fraternity for bandmen.

Although Tau Beta Sigma was founded at Tech, Alpha Chapter is located in Stillwater, Okla., because the national headquarters of Kappa Kappa Psi is also there at Oklahoma A&M.

A charter was granted to Tau Beta Sigma on March 26, 1946. On May 4 of the same year, Alpha Chapter came to Tech campus and installed Beta Chapter with 35 charter members into the national sorority of Tau Beta Sigma.

To become a member, a woman student must be a member of the Texas Tech band and have a 1-point grade average from the semester previous to becoming a member.

OFFICERS

| | |
|------------------------|----------------|
| Kathy Veazy | President |
| Sue Brown | Vice President |
| Mary Alice Jones | Secretary |
| Glenda Harris | Treasurer |
| Judy Milburn | Reporter |
| Judy Milburn | AWS Reporter |

THETA SIGMA PHI

Theta Sigma Phi, national professional fraternity for women in journalism, was founded in April, 1909, at the University of Washington in Seattle, where Alpha Chapter is still active.

Alpha Upsilon Chapter at Texas Tech was chartered in 1941. At present it has six members.

Projects each year are: Club Scarlet, mock night club, where Tech's "Most Handsome Man" is selected; assistance to the Journalism Department during Homecoming and Interscholastic League contests; assistance to AWS in editing Tech Tips; and the big event of the year, Matrix Table.

Mrs. Caro Brown of Alice, Texas, Pulitzer prize winner, spoke at the Matrix Table banquet last spring. A contest to pick outstanding editorials, features and news stories from the newspapers of the area, is held annually in connection with the banquet.

OFFICERS

| | |
|-------------------------|---------------------------|
| Barbara Pearce | President |
| Nancy Kaisner | Vice President |
| Marguerite Winder | Secretary |
| Melba Neely | Treasurer |
| Sue Watkins | Reporter and Archivist |



Barbara Pearce

SORORITIES

Panhellenic Council

PANHELLENIC INFORMATION

THE NATIONAL PANHELLENIC CREED

We, the Fraternity Undergraduate Members, stand for good scholarship, for guarding good health, for wholehearted cooperation with our college's ideals for student life, for the maintenance of fine social standards, and for the serving, to the best of our ability, of our college community. Good college citizenship as a preparation for good citizenship in the larger world of alumnae days is the ideal that shall guide our chapter activities.

We, the Fraternity Alumnae Members, stand for active, sympathetic interest in the life of our undergraduate sisters, for loyal support of the ideals of our Alma Mater, for the encouragement of high scholarship, for the maintenance of healthful physical conditions in chapter house and dormitory, and for using our influence to further the best standards for the education of young women of America. Loyal service to chapter, college, and community is the ideal that shall guide our fraternity activities.

We, the Fraternity Officers, stand for loyal and earnest work, for the realization of these fraternity standards. Cooperation for maintenance of fraternity life in harmony with its best possibilities is the ideal that shall guide our fraternity activities.

We, the Fraternity Women of America, stand for preparation for service through the character building inspired in the close contact and deep friendship of fraternity life. To us, fraternity life is not the enjoyment of special privileges but an opportunity to prepare for wide and wise human service.

PANHELLENIC COUNCIL

PANHELLENIC OFFICERS

| | |
|--------------------|---------------------|
| Tommye Wieland | President |
| Ardith Campbell | Vice President |
| Ruth Ann Cummings | Secretary |
| Julia Reed | Treasurer |
| Joan Knight | Rush Chairman |
| Dana MacNaughton | AWS Representative |
| Jackie Brooks | Activities Chairman |
| Jacqueline Sterner | Advisor |

MEMBERS

| | |
|--------------------|-------------------|
| Dana MacNaughton, | |
| Pat Cullum | Alpha Chi Omega |
| Karen Noteware, | |
| Dana Smith | Alpha Phi |
| Sandra Cooper, | |
| Peggy Miller | Delta Delta Delta |
| Jackie Brooks, | |
| Atha Lea Grice | Delta Gamma |
| Sandra Broome, | |
| Joan Knight | Gamma Phi Beta |
| Ardith Campbell, | |
| Rosalis McNamara | Kappa Alpha Theta |
| Toni Bannister, | |
| Jean McQueen | Kappa Kappa Gamma |
| Pat Rainer, | |
| Julia Reed | Pi Beta Phi |
| Marlys Harris, | |
| Mary Alice Jones | Sigma Kappa |
| Ruth Ann Cummings, | |
| Ann Humphreys | Zeta Tau Alpha |

PRESIDENT'S LETTER

Dear Miss Rushee,

May I welcome you to Texas Tech, and congratulate you on selecting Tech as your school. I know that you are going to like being a part of our school. You will enjoy the big, friendly campus and will want to make the most of all that is available to you as a new student.

Among the opportunities that will arouse your interest is the one of be-

coming a part of the Greek world. Exciting though this sphere may seem, and expedient to meeting new friends and seeking new experiences, it is not a necessity in finding happiness on our campus.

This section of the booklet contains information concerning Rush Week and a short history of each sorority. A good start will require the reading of these pages very carefully. This decision that you make during this Rush Week will be one of the most important decisions in your college career. You must choose the group of girls you feel that you will get along with best during your four years of college and after. So enter Rush Week with an open mind. Each sorority on this campus is nationally recognized, and is composed of wonderful girls who are eager to become your friends. Choose the one in which you will be the happiest.

Sorority women look first for sincerity in prospective pledges. Relax and you will discover how much fun Rush Week really is.

I am looking forward to meeting each of you personally this fall, and I hope that you will call on the people in the Panhellenic office for assistance in clarifying any doubtful phase of rush.

Happy rushing to each and every one of you is the aim of Panhellenic on the campus.

Sincerely,

Tommye Wieland, President
Panhellenic Council

WHAT IS PANHELLENIC?

One of the most important names in the Greek world is Panhellenic. The word is derived from the Greek roots-"Pan" meaning all, and "hellenic" meaning Greek. Thus Panhellenic is an organization in which all national Greek-letter social sororities are represented.

To promote intersorority cooperation the ten sororities at Texas Tech are members of a group known as Panhellenic Association. The governing body of the organization is the Panhellenic Council which is made up of two delegates from each sorority.

The purposes of Panhellenic are to promote good feeling between women's social Greek-letter organizations on campus, to further the intellectual accomplishments of sororities, and to make and enforce rushing regulations and policies regarding women students. It also seeks to unify the interests of sorority and non-sorority students.

Once a week the delegates meet to discuss common problems concerning sorority standards, scholarship, campus activities, and inter-sorority functions. Before action is taken, the delegates have time to present questions to their own chapters so that all sorority members have a part in final Panhellenic decisions.

Our Panhellenic is more than just a policy-making body. In addition to the regular duties of the Council, there are projects sponsored to give everyone a chance to work and play together. In the fall Panhel plans an all-sorority luncheon, and the various pledge classes present skits. The skits are judged and the winner is awarded a trophy. During the spring an intersorority softball tournament is held, and the winner is awarded a trophy at the Women's Day Banquet. Also at this banquet a trophy is given to the sorority with the highest scholastic average for the past year. There is an annual Panhellenic workshop at which leadership training is emphasized. Civic groups regularly call on Panhellenic for help with philanthropic projects.

WHAT IS RUSH WEEK

Rush week is a period during which women's social groups entertain po-

tential sorority women, or "rushees," prior to pledging new members.

It is the desire of Panhellenic, and of each individual member of sororities, that each girl who is interested in belonging to a sorority shall find the group that fits her personal needs. Many parties are held during rush week in the hope that the sorority members will come to know many rushees personally, and that the rushees will become acquainted with them. When prospective members, as guests, go through rushing, they see the gay side of sorority life, but it must be remembered that there is much seriousness and responsibility involved in being a good sorority pledge or member.

RUMORS

There are always rumors about an important event, and rushing is no exception. If you hear derogatory remarks about any particular sorority or any of the girls in the group, think twice about why the person talking is telling you these things that probably are not true. These may vary from the malicious to the ridiculous, and once they start, they spread quickly. Don't believe everything you hear, for it's more than likely to be false. Instead of spreading these rumors, ask the advisors who will be living in Drane Hall about their truth.

WHAT ARE SORORITIES?

ACTIVE CHAPTERS

There are ten sororities on the campus of Texas Technological College. Each sorority has the same purpose—to teach its members leadership through group experience and how to work and play with others under all circumstances. A sorority is a social

organization whose members have elected to establish a close affiliation with one another as college students. They are organized for mutual interest in education and college activities. Sororities promote lifetime friendships that are renewed constantly in alumnae groups and chapters. The national aspect of the organization gives members a broader concept of the work of human affairs. They encourage participation in varied activities which offer unlimited and valuable experience. Every sorority encourages and demands good scholarship.

ALUMNAE GROUPS

Upon leaving college, sorority women become alumnae and automatically become eligible for membership in alumnae organizations. Each of these groups participates in far-reaching philanthropic and educational projects of its national organization as well as supporting local altruistic programs.

HOW DO SORORITIES CHOOSE THEIR MEMBERS?

Before a sorority asks you to pledge, the members want to be quite sure that you will be happy in their group and that they, in turn, will enjoy working and living with you. It is important for sorority members to meet you and to see you as you really are. Formal rushing has been planned with this idea in mind. The parties are times when the sorority members will decide whether they think you will be a congenial member of their group. Some of the things which are of concern are the activities in which you participated in high school and the scholarship you attained there. After all, these are indications of future achievement.

HOW DO YOU CHOOSE A SORORITY?

You should choose a sorority in exactly the same way that you choose any group of friends. During rush week, you will have many chances to see and talk with sorority women. Naturally you want to make a "good impression" and you will dress carefully, as will the girls whom you are going to meet. But do not think your appearance is all that counts. Those girls will be looking at you as a potential friend, so you should act with your friends, and you should talk about things which really interest you.

Do not be influenced by the opinion of your associates and relatives, for the decision as to which group is best for you is based on personal conviction and mutual interest. Every group is worthwhile and has much to offer you.

Remember to look for the heart of the sorority—its members. The girls you choose as sorority sisters will be your very close friends for four years of college and years afterward. When the time comes to make your choice, make it a wise one. Just keep your eyes open and think for yourself.

When you go through rushing, do not set your heart on one group alone. It is best to know several groups. Remember, check your pocketbook and consider carefully the expense of pledging and initiation before joining a group. If you are able, the extra expense is paid back a thousand-fold in companionship and sisterhood!

EXPENSES

One of your first considerations in deciding to pledge a sorority should be whether or not you are able to meet your part of the financial responsibilities. Actually, there are

probably only a small minority of college students today who could not afford to join if they so desired. All the sororities at Texas Tech have very similar requirements for members and pledges. If you decide you can afford to pledge a sorority, then disregard finance and base your choice of group upon friendship and interest, but be sure you want to assume this obligation.

Range of Sorority Expenses 1956-1957

| | |
|---------------------------|---------------|
| Pledge Fee | \$10.00-25.00 |
| Initiation Fee | \$40.00-70.00 |
| (Badges included in some) | |
| Monthly Pledge Dues \$ | 7.00-10.50 |
| Monthly Active Dues \$ | 7.00-12.00 |

Average Total Cost for One School Year

| Average Range | |
|---------------|-------------|
| Pledges | \$180 |
| Actives | \$ 95 |

All sororities receive financial supervision from experienced alumnae and employed accountants. The financial advisors of the chapter welcome consultation with the parents at any time. If additional information is desired in regard to expenses of specific sororities, this information may be secured from the advisor to Panhellenic who is in the Dean of Women's Office.

FORMAL RUSH

LIVING ACCOMMODATIONS FOR RUSH WEEK

All rushees will be housed in Drane Hall. Room charges for the week will be \$8.50, payable by August 20 to the Office of the Dean of Women. Payment may be made by check or money order; please do not send cash.

Insofar as possible, you will be assigned your regular room you reserved for the fall semester. If you

are not assigned to your regular room, the room assignment during rush is temporary and in no way affects your regular room assignment for the college year.

The dormitories will be open at 9 a.m., Sunday, September 9, at which time you may move in. Please make arrangements to move in the dormitory between the hours of 9 a.m. and noon. At that time rooms will be assigned and a key deposit of \$1 will be collected, refundable when the room is vacated at the close of Rush Week. Rushees must be checked out of their rooms by 2 p.m., Saturday, September 15, if not in regular rooms, in order that the permanently assigned students may move in.

The dining room in the dorm *will not* be open during Rush Week; however, the Student Union will serve meals to rushees at a nominal charge. When you arrive on the campus, you will be given a schedule of the hours when meals are served and may purchase a meal ticket for the week. The first meal served will be Monday morning breakfast.

Panhellenic expects all rushees to be neat, orderly, and quiet in their rooms and to be courteous and cooperative with those in charge of the residence halls.

The dormitories will close at 10:30 p.m. Sunday through Friday; and Saturday at 12 midnight. Each rushee is responsible for signing in and out of the dormitory.

REGISTRATION

Your first step along the road to "rushing" should be taken in the direction of the Panhellenic Office. To be eligible to receive sorority invitations you must be registered with the Panhellenic Association. This registration places your name on the rushing list for the consideration of all ten sororities.

Registration includes:

Filling out *all eleven* registration blanks and returning them by *August 20* to the Dean of Women's Office. *Absolutely no registration will be accepted after this date.*

Enclosing with these registration blanks *two separate checks* as follows:

1. Rushing registration fee of \$1.50, made payable to Panhellenic Council.
2. Room fee of \$8.50, made payable to Texas Technological College.
3. If you find it impossible to attend rush, notify the Dean of Women's Office by August 20 and your room fee of \$8.50 will be refunded.

You may send a check or a money order, but please do not send cash through the mail.

It is recommended that registration be completed earlier than August 20 if at all possible. You may register by mail or in person. Your registration for rushing and/or housing will not be complete until all fees are paid.

RUSH ADVISORS

Each of the ten sororities at Texas Tech has chosen an alumna to live in Drane Hall during rush week. She has been chosen because of her broad sorority experience and because she is able to submerge her interests to yours and to those of Panhellenic. She is very familiar with rushing procedures and dorm do's and don't's. She is living in Drane in order to make rush week smoother for you. At your first dorm meeting you will meet these girls and will be assigned to particular ones. This does not mean you may not consult with the other counselors in Drane. All of them are there to answer your questions and help you in any way possible. These girls will not be wearing their pins, will not

be participating in rush with their own sororities, and will have no contact with members of their sororities at any time during rush week.

RUSH WEEK SCHEDULE

SEPTEMBER 1956

Sunday, Sept. 9

- 1 p.m.—Convocation, Student Union Ballroom.

All rushees are required to attend Convocation.

Schedule of Open Houses:

- 3:00-3:40 p.m.
- 4:00-4:40 p.m.
- 5:00-5:40 p.m.
- 6:00-6:40 p.m.

10:30 p.m.—Meeting in Drane Hall lounge for all rushees.

Monday, Sept. 10

Schedule of Open Houses

(continued):

- 9:00- 9:40 a.m.
- 10:00-10:40 a.m.
- 11:00-11:40 a.m.
- 2:00- 2:40 p.m.
- 3:00- 3:40 p.m.
- 4:00- 4:40 p.m.

Tuesday, Sept. 11—Period I Parties

7:00 a.m.—Rushees pick up invitations to Period I Parties. Sign acceptances immediately in Drane Hall lounge. Rushee must accept all invitations received, to a maximum of eight.

Schedule of Period I Parties:

- 9:00-10:30 a.m.
- 11:00-12:30 p.m.
- 2:30- 4:00 p.m.
- 4:30- 6:00 p.m.

Wednesday, Sept. 12

Schedule of Period I Parties

(continued):

- 9:00-10:30 a.m.
- 11:00-12:30 p.m.
- 2:30- 4:00 p.m.
- 4:30- 6:00 p.m.

Thursday, Sept. 13—Period II Parties

7:00 a.m.—Pick up invitations to Period II Parties. Sign acceptances immediately in Drane Hall lounge. Rushee must accept all invitations received, to a maximum of five.

Schedule of Period II Parties:

- 9:00-10:00 a.m.
- 10:30-11:30 a.m.
- 1:30- 2:30 p.m.
- 3:00- 4:00 p.m.
- 4:30- 5:30 p.m.

Friday, Sept. 14—Period III Parties

2:00 p.m.—Invitations to Period III Parties will be delivered to rushees. Invitations *must* be signed and turned in in Drane Hall lounge. Rushee must accept all invitations received, to a maximum of two.

Schedule of Period III Parties

(Preference Parties):

- 6:30- 8:00 p.m.
- 8:30-10:00 p.m.

10:30 p.m.—Sign preference cards in Drane Hall lounge.

Signing of this preference is binding to the effect that if not pledged to the sorority of first choice, then you are willing to be pledged to your second choice, and likewise to third. You should not list on your preferential card the name of a sorority you would be unwilling to join, *since signing the preference card shall be binding for one calendar year if that sorority bids you.*

Saturday, Sept. 15

5 p.m.—Bid lists will be posted. Bids will be delivered at this time to the Drane Hall lounge.

PREFERENTIAL BIDDING

Friday, September 14, at 10:30 p.m., all rushees are to assemble in the lounge at Drane Hall and fill out a preferential card. On this card

the rushee lists in the order of her preference any three sororities that she would be willing to pledge.

According to National Panhellenic, "when a girl receives a bid under the preferential system, the signing of the preference card shall be binding to the extent that she shall be considered ineligible for one calendar year for a bid from any fraternity other than the one from which she received a bid, whether it be Texas Technological College or elsewhere, in accordance with the correct functioning of the preferential system."

THEREFORE, A GIRL MUST BE WILLING TO PLEDGE ANY OF THE THREE SORORITIES SHE LISTS.

Saturday morning, the Dean of Women's staff will match the preferential lists of girls each sorority wishes to pledge and the rushees' preferential cards which list the three sororities each rushee wishes to pledge. You will be a pledge of the sorority of your first choice if your name is within the quota on the sorority's preferential list. If not, you will be a pledge of your second choice, provided your name is within the quota on that sorority's list, and in the same way, you may become a pledge of your third choice. Only the staff members of the Dean of Women will know whether the sorority you pledge is your first, second, or third preference, and the information will be divulged to no one. You will undoubtedly be happy in any one of the three you list, since so many fine groups exist on the campus. It is, therefore, urged that you take full advantage of your opportunity to list three sorority choices, since under the preferential system you cannot receive an invitation to membership from a sorority which you have not

indicated on your preferential card, even though your name may be on the sorority's preferential list.

Each sorority is limited in its total membership and its total number of pledges each year. The number of pledges allowed each chapter is determined each year by the number of girls interested in sorority membership. Each sorority will be able to pledge a minimum of twenty-five girls during this formal rush period.

WHAT TO WEAR—WHEN

One of the most important things to remember when planning what you will wear to rush is the climate in Lubbock. You should be prepared for just about anything. When thinking about Rush Week, girls often make the mistake of placing too much emphasis on clothes and accessories. In reality, you probably have everything you need right now, for the majority of college girls come from homes like your own. For any additions you might plan to make to your wardrobe, remember that simplicity and practicability are the keynotes in campus and rushing clothes. So, if you make new purchases, select those clothes you can wear many times again during the school year. Good grooming is the most important thing about appearance, not the expensiveness of your clothes.

A glance or two at the following guide is guaranteed to turn you out correctly at all rushing affairs.

Open House—Wear fall cottons, hose, heels, and hats.

Period I and II—For these parties, wear fall cottons, hose, and heels. (No hats.)

Period III—Wear a dressy dress, hose and heels. (No hats.)

OPEN OR INFORMAL RUSH

There will be two periods of informal rush during the 1956-57 school year.

OPEN RUSH FOR FALL—October 1-October 27.

1. A girl may sign to participate in open rush in the Dean of Women's Office any time during this period.
2. From October 1 to October 27, rushing, in the form of coke dates with sorority members, may take place.
3. No sorority may bid (ask to pledge) a girl until Monday, October 15. From October 15 to October 27, any girl who has signed for rushing may be asked orally to pledge.
4. There may be a maximum of 5 sorority members on a coke date with a rushee at one time.
5. Eligibility to participate by a rushee is governed by the same eligibility rules that pertain to formal rush. Those sororities eligible to participate will be those which have not filled their quotas and/or have not arrived at the chapter limitation established by Panhellenic.
6. Normal social contact with friends may be continued during this period, but each girl must accept the responsibility of adhering to the spirit of fair play if she is going through open rush.

OPEN RUSH FOR SPRING—February 25, 1957-May 15.

1. A girl may sign to participate in open rush in the Dean of Women's Office any time during this period.
2. From February 25 to May 1 rushing, in the form of coke dates with sorority members, may take place.

3. Any girl who has signed for rushing may be asked orally to pledge at any time during this period.
4. Eligibility is the same as in formal rush, and the sororities participating will be those which have not filled their quota and/or have not arrived at the chapter limitation established by Panhellenic.

SUMMER RUSH

The Panhellenic Council of Texas Technological College has adopted the policy of NOT participating in any form of summer rush. This prohibits a sorority member at Tech from participating in a rush party of her sorority in any city, town or community during the summer months. All prospective rushees are reminded that they are NOT to participate in or attend any function given by any one fraternity in the form of an organized party.

RULES GOVERNING FORMAL RUSH WEEK

I. Eligibility of Rushees

Rushees must be regularly enrolled or in the process of enrolling in Texas Technological College for 12 or more hours in order to be eligible to participate in any rushing procedure. Any girl previously enrolled in any college must have a "C" average to be eligible.

II. Registration of Rushees

1. The Panhellenic Office is permanently located in the Dean of Women's Office; during Rush Week it will temporarily be located in Knapp, however, rushees will receive their bids in Drane Hall.
2. Drane Hall will be open for the assignment of rooms from 8 a.m. to noon Sunday, September 9, 1956. Rushees will register with members of Panhellenic Council

from 8 a.m. to noon in Drane Hall.

3. At registration each rushee will be assigned a group with whom she will attend the Open Houses.

III. Rushing Rules

1. Rush week is defined as beginning at 8 a.m. Sunday, September 9, and ending with receiving bids at 5 p.m. Saturday, September 15.
2. The dormitories will close at 10:30 p.m. on Sunday through Friday nights, and at 12 midnight on Saturday night. Each rushee is responsible for signing in and out of the dormitory.
3. Upon arrival in Lubbock, a rushee is not to go to the home of sorority members or be with anyone connected with a sorority with the exception of her *immediate* family.
4. Rushees shall not grant interviews to the press or pose for photographers during rush week unless arrangements have been made with the Panhellenic Council and the Office of the Dean of Women.
5. Emergency telephone calls only will be taken care of through the Drane Hall office. That number is POrter 5-6371.
6. Rushees must furnish their own transportation to and from the parties. Cabs in Lubbock offer special rates during the formal rushing period.
7. A rushee must arrive and leave all rush parties at the hour specified in the invitations.
8. A rushee must attend all parties which she has accepted. Broken dates are not permitted. In case of illness, accident or withdrawal from rush, she should notify the Panhellenic Office immediately in order to avoid future ineligibility.
9. There is to be no smoking at any of the rush parties.

10. Rushees are subject to the penalty of deferred pledging for one semester for violation of rushing rules.

IV. Silence During Formal Rushing

1. There shall be no contact or conversation between a rushee and sorority member, pledge, or alumna except at the specified rush parties. (May say hello.)
2. There is to be no contact with men during rush week.
3. The period of silence begins at 8 a.m. on Sunday, September 9 and ends at 5 p.m. on Saturday, September 15, 1956.
4. Sororities are bound by silence and may not deliver letters, telephone calls, or telegrams to rushees at any time.

V. Illegal Rushing

1. Oral invitations to parties or to join a sorority are absolutely forbidden during rushing.
2. By mutual agreement there shall be no "spiking" at any time. Spiking is defined as persistent persuasion on the part of a sorority to secure from a rushee some commitment of preference for its group.
3. Sorority members shall make no statements to rushees or others giving their idea of sorority ratings.
4. No gifts, flowers, or favors can be given rushees, with the exception of Period III parties. Name tags are to be distributed by Panhellenic during Registration, and are to be worn all week, with the exception of Period III parties.

VI. Penalties for Violations of Rush Rules by Sororities

It is your responsibility to report infractions of any rushing rule to the Panhellenic Advisor within 48 hours of the occurrence. All penalties for violations of rushing rules will be decided by the Judiciary Committee of Panhellenic.

SORORITY DIRECTORY

ALPHA CHI OMEGA

Gamma Rho



Founded at DePauw University, October 15, 1885
 Number of collegiate chapters—81
 Colors—Scarlet and olive green
 Insignia—Lyre with black enamel scroll across strings bearing Greek letters
 Flower—Scarlet carnation with smilax
 Publication—"The Lyre"
 Philanthropy—Aid to cerebral palsy patients
 Nickname—Alpha Chi
 Outstanding events—Candy Stripe Dinner Dance, Formal Spring Presentation, Spring Retreat and Workshop, Senior Banquet, Paddle Party
 President—Pat Cullum
 Rush Chairman—Dana MacNaughton



Left to right: Judy Speer, Martha Cordell, Jimmie Faye Maxwell, Joan Druesedow.



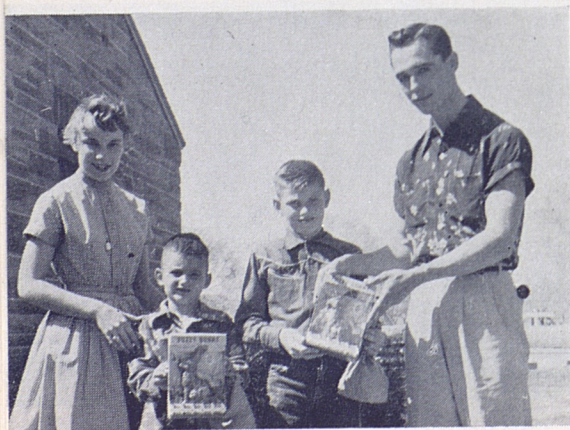
Officers (left to right): Pat Cullum, president; Dana MacNaughton, rush chairman; Suzanne Wilson, recording secretary; Janet Jones, social chairman; Janet Forgey, treasurer.

ALPHA PHI

Gamma Iota



Founded at Syracuse University, October 10, 1872
 Number of collegiate chapters—53
 Colors—Silver gray and bordeaux
 Insignia—Plain gold monogram of the two Greek letters with the letters "AEO" in black.
 Flower—Lilly-of-the-Valley and Forget-Me-Nots
 Publication—"The Alpha Phi Quarterly"
 Philanthropy—Cardiac Aid Foundation
 Nickname—Alpha Phi
 Outstanding events—Founders Day Party, Mother Alumni Banquet, Work with Cardiac Aid during Heart Week. Birthday party of chapter founding, Annual Easter Egg hunt for crippled children
 President—Diana Smith
 Rush Chairman—Karen Noteware



Alpha Phi Easter Egg Hunt for orphans home with the Sigma Chis.



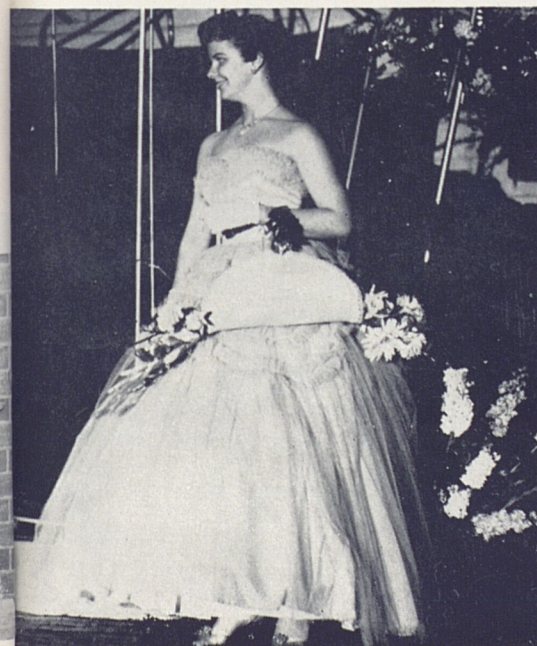
Left to right: Marilyn Floeck, scholarship chairman; Diana Smith, president; Karen Noteware, pledge trainer.

DELTA DELTA DELTA

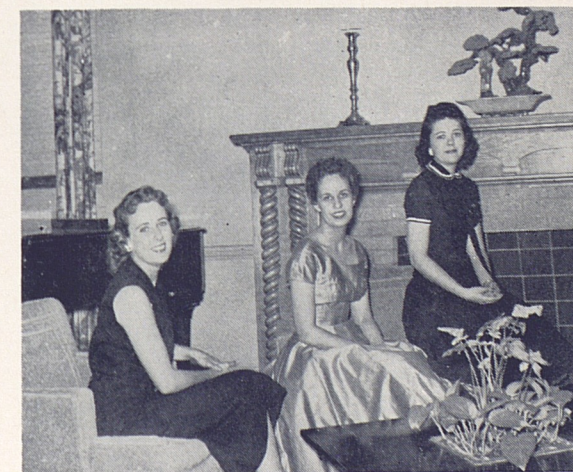
Phi Eta



Founded Thanksgiving Eve, 1888 at Boston University
 Number of collegiate chapters—99
 Colors—Silver, gold, and blue
 Insignia—Three jeweled stars within a crescent of gold bearing three deltas
 Flower—Pansy
 Publication—"The Trident"
 Philanthropy—Awards scholarships to American and Canadian women students
 Nickname—Tri Delta
 Outstanding events—Founder's Day Dinner, Pine Prance, Pine Pilgrimage, Delta Week in honor of new initiates, Annual Presentation Dance, Pansy Tea
 President—Sandra Cooper
 Rush Chairman—Donnell Phillips



Peggy Miller, "Best Pledge of 1956," being recognized at Presentation Dance.



Left to right: Donnell Phillips, rush chairman; Lu Anne McNeill, vice president and pledge trainer; Sandra Cooper, president.

DELTA GAMMA

Gamma Xi



Founded at Lewis School, Oxford, Mississippi, December, 1873
 Number of collegiate chapters—84
 Colors—Bronze, pink, and blue
 Insignia—Anchor with white shield bearing Greek letters
 Flower—Cream rose
 Publication—"The Anchora"
 Philanthropy—Sight conservation and aid to the blind
 Nickname—DG
 Outstanding events—Christmas Dinner Dance, Spring Presentation Dance, Pinafore Party, Fall retreat
 President—Marguerite Winder
 Rush Chairman—Rebecca Wilson



GAMMA PHI BETA

Beta Tau



Founded at Syracuse University, New York, November 11, 1874
 Number of collegiate chapters—61
 Colors—Mode and brown
 Insignia—The Greek letters enclosed in a black enameled crescent bearing a Hebrew numeral
 Flower—Pink Carnation
 Publication—"The Crescent"
 Philanthropy—Own and operate two summer camps for underprivileged girls at Vancouver, B.C., and Indian Hills, Colo.
 Nickname—Gamma Phi
 Outstanding events—Homecoming coffee, Founders' Day program, Christmas Dinner Dance, Presentation, Senior Breakfast
 President—Patricia Johnson
 Rush Chairman—Marilyn Dunagan



Pat Lynskey at the first Spring Presentation of new initiates.



Left to right: Pat Johnson, president; Marilyn Dunagan, rush chairman; Joan Knight, student counselor.

KAPPA ALPHA THETA

Gamma Phi

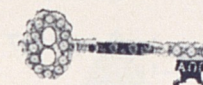


Founded at DePauw University, January 27, 1870
 Number of collegiate chapters—80
 Colors—Black and gold
 Insignia—Kite-shaped, gold border, black enamel shield and a white chevron on which are inscribed the Greek letters
 Flower—Black and gold Pansy
 Publication—"Kappa Alpha Theta"
 Philanthropy—Supports Institute of Logopedics, the Dr. Matilda Brooks research laboratory
 Nickname—Theta
 Outstanding events—Presentation and Dance, Introductory Tea, Retreat, Dinner Dance, Gypsy Dance, Kite Flying, Kidnap Breakfast
 President—Pat Boles
 Rush Chairman—Ardith Campbell

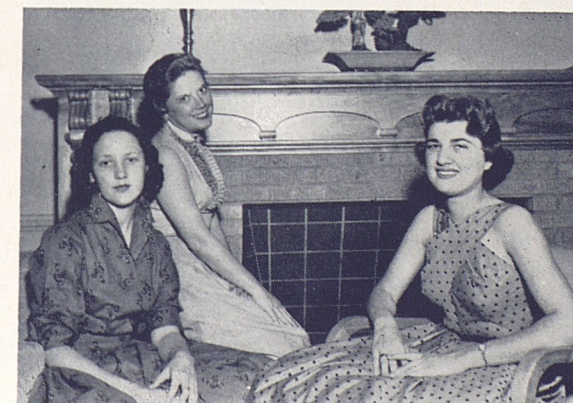


KAPPA KAPPA GAMMA

Delta Psi



Founded at Monmouth College, October 13, 1870
 Number of collegiate chapters—85
 Colors—Dark and light blue
 Insignia—Golden Key
 Flower—Fleur-de-lis
 Publication—"The Key"
 Philanthropy—Rehabilitation services for crippled children and adults
 Nickname—Kappa
 Outstanding events—Fall Dinner Dance, Valentine Presentation, Pledge Peppermint Party, Faculty Picnic, Pledge Reception, Farewell Dance, Big-Little Sister Paddle Party, Pledge-Active Picnic
 President—Donna Abraham
 Rush Chairman—Sue Brown



PI BETA PHI

Texas Gamma



Founded at Monmouth College, April 28, 1867
 Number of collegiate chapters—103
 Colors—Wine and silver blue
 Insignia—Golden arrow with Greek letters inscribed on the feathers
 Flower—Wine carnation
 Publication—"The Arrow"
 Philanthropy—Founding and maintenance of the Pi Beta Phi Settlement
 School in Gatlinberg, Tennessee
 Nickname—Pi Phi
 Outstanding events—Masquerade Dance, Presentation, Annual Santa Fe
 Retreat at Easter
 President—Deanie Edwards
 Rush Chairman—Gwen Killian



In the snow at the ski run.



Left to right: Deanie Edwards, president; Gwen Killian, rush chairman; June Taylor, pledge trainer.

SIGMA KAPPA

Gamma Iota



Founded at Colby College in 1874
 Number of collegiate chapters—66
 Colors—Maroon and lavender
 Insignia—Gold triangle supporting a raised triangle of maroon enamel bearing the Greek letters in gold
 Flower—Violet
 Publication—"The Sigma Kappa Triangle"
 Philanthropy—The Maine Sea Coast Mission
 Nickname—Sigma
 Outstanding Events—Presentation Dance, Dinner Dance, Founders' Day
 Banquet, Retreat, Pledge Tea
 President—Mary Alice Jones
 Rush Chairman—Marlys Harris



Left to right: Billy Harding, first vice president; Jimmie Tomlinson, recording secretary; Mary Alice Jones, president; Mary Jane Hartley, social chairman.

ZETA TAU ALPHA

Gamma Tau



Founded at Longwood College, Virginia, October 15, 1898

Number of collegiate chapters—99

Colors—Steel gray and turquoise blue

Insignia—Shield of black enamel superimposed on a shield of gold. Black shield bears five pointed crown and Greek letters

Flower—White violet

Publication—"Themis"

Philanthropy—Work in cooperation with the National Society of Crippled Children and Adults in publishing a manual on the treatment of the cerebral palsied

Nickname—Zeta

Outstanding events—Balloon sale for March of Dimes, Spring Presentation of new members, Christmas party for Negro children, Dinner Dance, Zeta Week, Farewell Luncheon

President—Ruth Ann Cummings

Rush Chairman—Joe Love Stogner



Just clowning around.



Left to right: Dottie Sue Horshem, treasurer; Ruth Ann Cummings, president; Averill Brinkmann, vice president; Patsy Harris, secretary.

Printed By
THE TEXAS TECH PRESS
Texas Technological College
Lubbock

