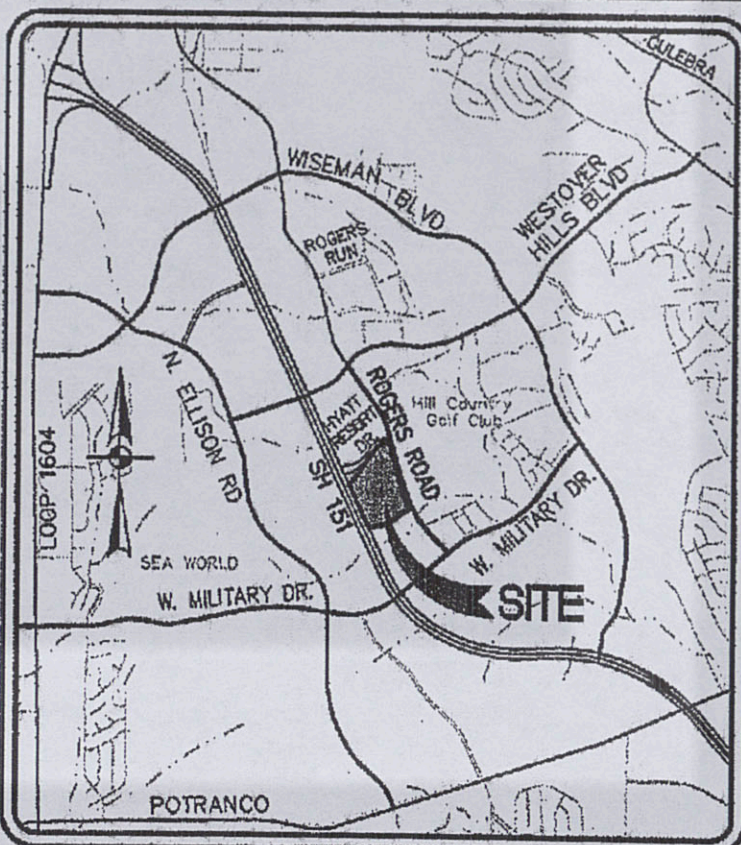


LOCATION MAP
NTS



LOCATION MAP
NTS

**PAPE-DAWSON
ENGINEERS**

555 EAST RAMSEY | SAN ANTONIO, TEXAS 78216 | PHONE: 210.375.9000
FAX: 210.375.9010
TODAY BOARD OF PROFESSIONAL ENGINEERS, FIRM REGISTRATION # 470

**NATIONWIDE SAN ANTONIO
SALES AND SERVICE CENTER
OVERALL GRADING DRAINAGE PLAN**

PLAT NO.

JOB NO. 7633-00

DATE NOVEMBER 2010

DESIGNER S.J.

CHECKED D.M. DRAWN J.F.

SHEET C2.10

GRADING AND DRAINAGE GENERAL NOTES:

1. ALL GRADES AND CONTOURS ARE FINAL TOP OF FINISHED SURFACE ELEVATIONS.
2. POSITIVE DRAINAGE SHALL BE MAINTAINED ON ALL SURFACE AREAS WITHIN THE SCOPE OF THE PROJECT. DRAINAGE SHALL BE DIRECTED AWAY FROM ALL BUILDING FOUNDATIONS. CONTRACTOR SHALL TAKE PRECAUTIONS NOT TO ALLOW ANY FLOODING OF WATER.
3. NO ABRUPT CHANGES OF GRADE SHALL OCCUR IN THE DRIVEWAYS, PARKING AREAS OR SIDEWALKS.
4. UTILITIES SHOWN ON THE PLANS ARE FROM THE BEST INFORMATION SOURCES AVAILABLE AT THE TIME OF DESIGN BUT MAY NOT REPRESENT ALL EXISTING UTILITIES ON SITE. THE CONTRACTOR WILL BE RESPONSIBLE FOR DETERMINING EXACT LOCATION OF ALL UTILITIES WHETHER SHOWN ON THE PLANS OR NOT. THE CONTRACTOR SHALL UNCOVER EXISTING UTILITIES PRIOR TO CONSTRUCTION AND VERIFY SIZE, GRADE AND LOCATION. THE CONTRACTOR SHALL NOTIFY THE ENGINEER IMMEDIATELY OF ANY DEVIATIONS FROM PLANS PRIOR TO BEGINNING CONSTRUCTION. ANY DAMAGE TO EXISTING UTILITIES, WHETHER SHOWN ON THE PLANS OR NOT, SHALL BE THE CONTRACTOR'S RESPONSIBILITY TO REPAIR AT HIS OWN EXPENSE.
5. CONTRACTOR SHALL IMMEDIATELY NOTIFY THE ENGINEER IF ANY QUESTIONS THAT MAY ARISE CONCERNING THE INTENT, PLACEMENT, OR LIMITS OF DIMENSIONS OR GRADES NECESSARY FOR CONSTRUCTION OF THIS PROJECT.
6. SEE DETAIL SHEETS FOR APPLICABLE DETAILS.
7. ALL CONSTRUCTION AREAS WITHIN THE SITE SHALL BE STRIPPED OF VEGETATION AND LOOSE TOPSOIL. ANY POCKETS OF DEBRIS ENCOUNTERED SHALL ALSO BE REMOVED.
8. REFER TO PROJECT SPECIFICATIONS FOR ADDITIONAL SPECIFICATIONS AND CONTRACT INFORMATION.
9. CONTRACTOR SHALL TAKE ALL NECESSARY PRECAUTIONS (USE OF SILT FENCES, ETC.) TO KEEP DRAINAGE AND SILT FROM WASHING ONTO ADJACENT PROPERTY OR CROSSING ADJACENT STREET/FOREST. CONTRACTOR SHALL IMMEDIATELY REMOVE SILT/DEBRIS WHICH WASHES OFFSITE OR INTO EXISTING STORM DRAIN SYSTEMS. (SEE SHEET PLANS & TPODES BOOK).
10. AT THE CONTRACTOR'S SOLE EXPENSE, THE CONTRACTOR SHALL REPAIR OR REPLACE (TO PRE-CONSTRUCTION CONDITIONS) ANY ADJACENT CURB, PAVEMENT, FENCES, ETC. DAMAGED BY CONSTRUCTION ACTIVITIES.
11. ALL MATERIALS AND CONSTRUCTION PROCEDURES WITHIN THE SCOPE OF THIS CONTRACT WERE NOT SPECIFICALLY COVERED IN THE SPECIFICATIONS SHALL CONFORM TO ALL APPLICABLE CITY OF SAN ANTONIO STANDARD SPECIFICATIONS FOR PUBLIC WORKS CONSTRUCTION (LATEST EDITION).
12. THE CONTRACTOR SHALL BE RESPONSIBLE FOR ACQUIRING ALL PERMITS, TESTS, APPROVALS AND ACCEPTANCES REQUIRED TO COMPLETE CONSTRUCTION ON THIS PROJECT.
13. ALL GRADES IN AREAS DESIGNATED AS DISABLED PARKING SHALL BE MAINTAINED NO MORE THAN 2% MAXIMUM SLOPE IN ALL DIRECTIONS.
14. VERIFY THE SUITABILITY OF ALL EXISTING AND PROPOSED SITE CONDITIONS INCLUDING GRADES AND DIMENSIONS BEFORE COMMENCEMENT OF CONSTRUCTION. THE ENGINEER SHALL BE NOTIFIED IMMEDIATELY OF ANY DISCREPANCIES.
15. SITE PREPARATION, GRADING, FOUNDATION EXCAVATION AND FILL SHALL BE PERFORMED IN STRICT ACCORDANCE WITH THE GEOTECHNICAL ENGINEERING REPORT.
16. ALL SELECT FILL MATERIAL PROVIDED SHALL BE APPROVED BY THE GEOTECHNICAL ENGINEER PRIOR TO PLACING AND COMPACTING.

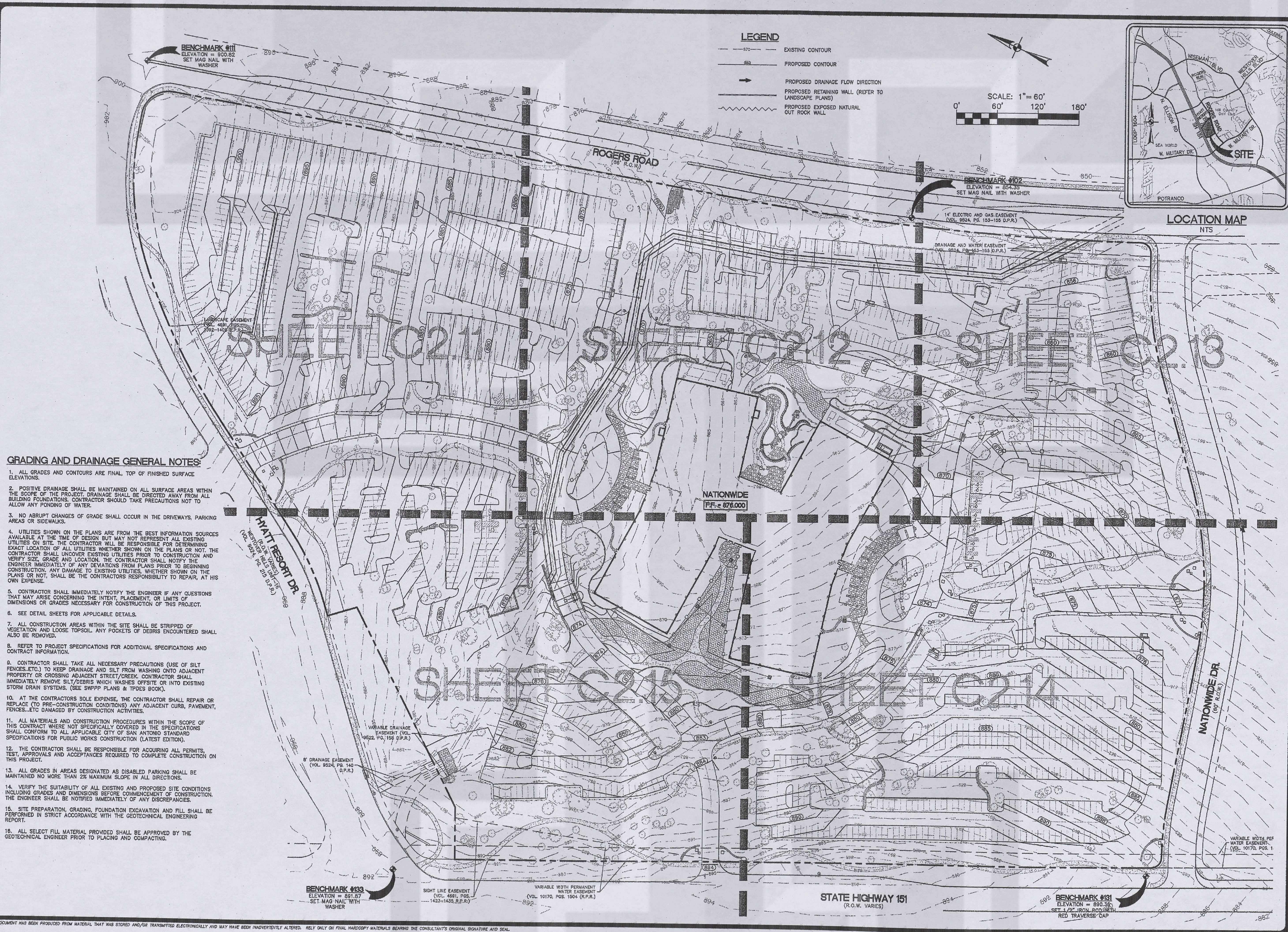
Date: Jan 03, 2011, 3:36pm User: D:\dwg\pape
File: P:\210\375\9000\NATIONWIDE SAN ANTONIO SALES AND SERVICE CENTER.dwg

THIS DOCUMENT HAS BEEN PRODUCED FROM MATERIAL THAT HAS STORED AND/OR TRANSMITTED ELECTRONICALLY AND MAY HAVE BEEN INADVERTENTLY ALTERED. RELY ONLY ON FINAL HARD COPY MATERIALS BEARING THE CONSULTANT'S ORIGINAL SIGNATURE AND SEAL.

LEGEND

- EXISTING CONTOUR
- PROPOSED CONTOUR
- PROPOSED DRAINAGE FLOW DIRECTION
- PROPOSED RETAINING WALL (REFER TO LANDSCAPE PLANS)
- PROPOSED EXPOSED NATURAL CUT ROCK WALL

SCALE: 1" = 60'
0' 60' 120' 180'



DESIGN DEVELOPMENT

**PAPE-DAWSON
ENGINEERS**

555 EAST RAMSEY | SAN ANTONIO, TEXAS 78216 | PHONE: 210.375.9000
FAX: 210.375.9010
TEXAS BOARD OF PROFESSIONAL ENGINEERS, FIRM REGISTRATION # 470

January 3, 2011

Design Development
Project No. 7633-00

OVERALL
GRADING AND
DRAINAGE PLAN

C2.10