

SECTION 1305.

Sec. 1401

Sec. 1306.

Sec. 1310

SECTION 1309

Sec. 1308

See Meter Show it correct

See Meter Show it correct

See Meter Show it correct

N

Sec. 1320

Red lines indicate correct section lines.

SECTION 1313.

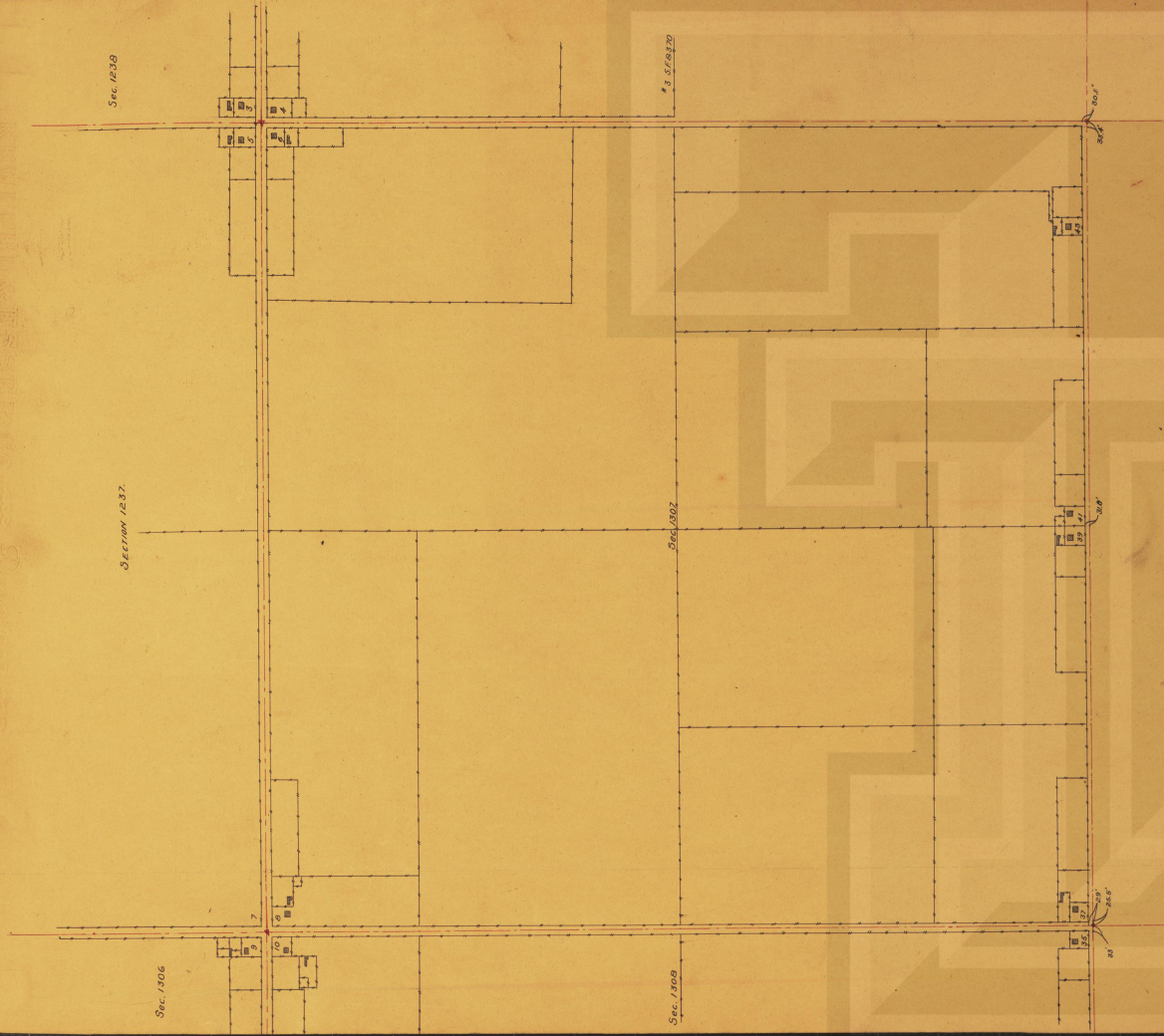
Sec. 1316.

FROM
ENGINEERING DEPARTMENT
Duckie U. Co., Port City, Texas
Surveyed by A. S. M. Date
Plotted by A. S. M. Date
Approved by A. S. M. Date
Book No. 84. Page
Drawing No. 10846
Scale 1" = 400'

FROM
ENGINEERING DEPARTMENT
Duckie U. Co., Port City, Texas
Plot of Standing Section as Permitted
by Sec. 1313, 1316, 1320, 1321
Surveyed by Date
Plotted by Date
Approved by Date
A. S. M. Book No. Page
Sheet No. Section

Scale 1" = 400'

SECTION 1232



Sec. 1236

Red lines indicate corner section lines

Scale 1" = 400'

Section 1235

Sec. 1231

ENGINEERING DEPARTMENT
Doubt U. Co., Post City, Texas.
Surveyed by H. A. M. July 1898
Plotted by E. A. M. July 1898
Book No. 12 Page 12
Book No. 12 Page 12
Sheet No. 12
Scale 1" = 400'

ENGINEERING DEPARTMENT
Doubt U. Co., Post City, Texas.
Plotted by E. A. M. July 1898
Surveyed by H. A. M. July 1898
Plotted by E. A. M. July 1898
Book No. 12 Page 12
Book No. 12 Page 12
Sheet No. 12
Scale 1" = 400'

Post City, Texas, Oct. 22nd, 1908.

Double U Company:

I herewith hand you drawing No.08015, Sheets 1 and 2, from Engineering Department, Double U Company, Post City, Texas. These sheets show error in location of fences and buildings along the south row of farms upon the plains from 19 to 43 inclusive.

The error was discovered about the middle of April when we were laying out fences for farms north of the Tahoka road. We discovered that the fence lines did not line with the fence already built south of said road, and began an investigation to find out the reason, as the field notes showed that the north and south section lines south of the Tahoka road were in line with those north of the Tahoka road. Mr.Twichell set a stone at each section corner along the Tahoka road, but set none one mile south of said road, but did set the section corners two miles south. As the notes showed that from the N.E.corner of section 1310 to the S.E.corner section 1320 was a straight line, we ran this line straight on the ground and found it to be 45 ft. west of a stone that some one had set for the S.E. corner of section 1310, and from which all of the farms in this locality had been laid out from. We did the same thing one mile east and found the S.E.corner of section 1309 45.5 ft. west of a stone which had been previously set by some one and used for the lay-out of the farms. We proceeded in the same manner from the N.E.corner of 1308 to the S.E. of 1316; also from the N.E.corner 1307 to the S.E. corner of section 1. In each case we found stones previously set by some one, which had been used for the laying out of the farms, but in each of the last two cases the stones were about seven ft. out of line.

I brought this matter to Mr. Post's attention at the time of the discovery, and he instructed me to use the correct corners for all future fences, which I have done, and at that time he said we would correct the old ones, and I ~~will~~ lay these maps before you at this time in hopes that a final decision in writing (after having looked the matter over with the whole of the information before you) might be received so as to have the matter of record, and for future guidance.

The fact that some of these lines have been run with reference to the old or incorrect corners and some from the correct ones has been a source of a great deal of annoyance as well as requiring extra work, as we have been required to be exceedingly careful in figuring on these farms on account of the two locations of the section corners.

ALM

Very Respectfully,

A. D. Moorhoff

S- 0001

Post City, Texas, Oct. 22nd, 1908.

Double U Company:

I herewith hand you drawing No.08015, Sheets 1 and 2, from Engineering Department, Double U Company, Post City, Texas. These sheets show error in location of fences and buildings along the south row of farms upon the plains from 19 to 43 inclusive.

The error was discovered about the middle of April when we were laying out fences for farms north of the Tahoka road. We discovered that the fence lines did not line with the fence already built south of said road, and began an investigation to find out the reason, as the field notes showed that the north and south section lines south of the Tahoka road were in line with those north of the Tahoka road. Mr.Twichell set a stone at each section corner along the Tahoka road, but set none one mile south of said road, but did set the section corners two miles south. As the notes showed that from the N.E.corner of section 1310 to the S.E.corner section 1320 was a straight line, we ran this line straight on the ground and found it to be 45 ft. west of a stone that some one had set for the S.E. corner of section 1310, and from which all of the farms in this locality had been laid out from. We did the same thing one mile east and found the S.E.corner of section 1309 45.5 ft. west of a stone which had been previously set by some one and used for the lay-out of the farms. We proceeded in the same manner from the N.E.corner of 1308 to the S.E. of 1316; also from the N.E.corner 1307 to the S.E. corner of section 1. In each case we found stones previously set by some one, which had been used for the laying out of the farms, but in each of the last two cases the stones were about seven ft. out of line.

I brought this matter to Mr. Post's attention at the time of the discovery, and he instructed me to use the correct corners for all future fences, which I have done, and at that time he said we would correct the old ones, and I ~~will~~ lay these maps before you at this time in hopes that a final decision in writing (after having looked the matter over with the whole of the information before you) might be received so as to have the matter of record, and for future guidance.

The fact that some of these lines have been run with reference to the old or incorrect corners and some from the correct ones has been a source of a great deal of annoyance as well as requiring extra work, as we have been required to be exceedingly careful in figuring on these farms on account of the two locations of the section corners.

ALM

Very Respectfully,

A. D. Moorhoff

S- 0001