



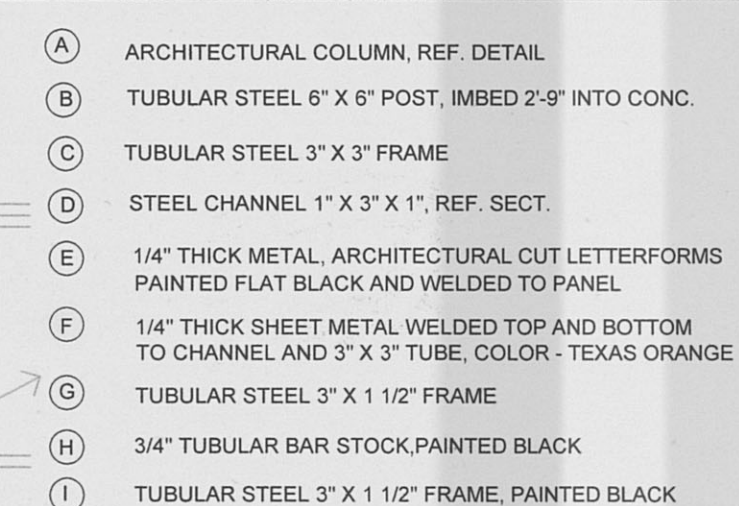
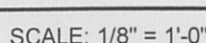
SCALE: 1-1/2" = 1'-0"



SCALE: 1" = 1'-0"

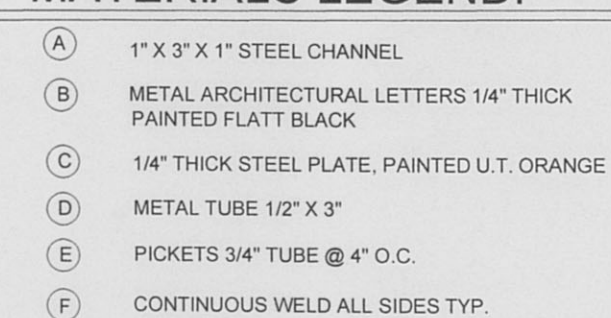


SCALE: 1/8" = 1'0"



J	UNIVERSITY SEAL - CAST BRONZE, IN RELIEF RAISED AREA POLISHED, RECESSED AREA FLAT BLACK, U.T. TO PROVIDE A COMPLETE ARTWORK, CONTRACTOR TO SHOP DRAWINGS TO 1/4" ANGULAR DETAIL FOR APPROVAL. MOUNT USING A SILD 1/4" THICK METAL BAKING PLATE. USE HEX HEAD MACHINE BOLTS TO SCREW INTO BRONZE SEAL. WELD TO PREVENT THE CRACK OF PLATE.
K	EXISTING GRADE VARIES
L	PICKETS 1/2" BAR STOCK, PAINTED BLACK
M	TUBULAR STEEL 2" X 2" TOP FRAME, PAINTED BLACK
N	BOTTOM FRAME 1" X 2" TUBULAR STEEL, PAINTED BLACK
O	MIDDLE FRAME 1" X 2" TUBULAR STEEL, PAINTED BLACK
P	TUBULAR STEEL POST 3" X 3", PAINTED BLACK
Q	LIMESTONE PLAQUE, REF. DET. 5SD/3
R	CAST STONE ARCHITECTURAL FINIAL, REF. SPECS.
S	SMOOTH CUT LIMESTONE CAP, REF. DET. 182/SD/3
T	CUT LIMESTONE BULLNOSE AND PANEL, REF. DET. 4SD/3.
U	3, EQUALLY SPACED, L-TYPE GAGE HINGES TO PREVENT THE CRACK OF PLATE.

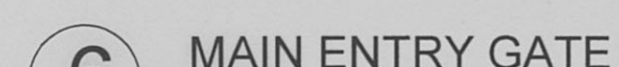
SCALE: 1/8" = 1'-0"



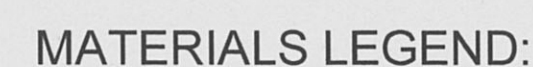
Technical drawing of a vertical support post. The drawing includes the following dimensions and callouts:

- Top Flange:** A horizontal flange at the top with a width of 3" and a thickness of 1".
- Vertical Post:** A central vertical post with a diameter of 1"-3".
- Post Length:** The main vertical section of the post is 9" long.
- Bottom Flange:** A horizontal flange at the bottom with a width of 1 1/2".
- Callouts:**
  - A:** Points to the top flange.
  - B:** Points to the vertical post.
  - C:** Points to the bottom flange.
  - D:** Points to the bottom flange.
  - E:** Points to the bottom flange.
  - F:** Points to the vertical post.

---



SCALE: 1/2" = 1'-0"



- (A) 3/8" MACHINE BOLTS THREADED INTO BRONZE LOGO
- (B) METAL SPACERS BETWEEN PLATES
- (C) 1/4" THICK STEEL PLATE, PAINTED FLAT BLACK
- (D) CAST BRONZE SCULPTURE LOGO CASTING
- (E) METAL PLATE AND LOGO TO BE MACHINE CUT IN TWO EQUAL PIECES.
- (F) SPOT WELD BOLTS IN PLACE TO PREVENT REMOVAL

NOT TO SCALE



The  
University of  
Texas at  
Austin

Owner: University of Texas  
Mens Athletic Department  
Address: Red River and MLK Blvd.  
Austin, Texas  
78701  
phone: 512.471.5317  
Fax: 512.471.4833

AREA MAP

DATE ISSUED: 5/06/98  
REVISIONS:

DRAWN BY:	TAB/TWH
REVIEWED BY:	JRA



SCALE AS INDICATED

PROJECT NUMBER:

# SITE DETAILS

## SD-2