

Block MO, Lamb Co., J. M. Morrisson & Bro.

Block T-2, Lamb Co., R. M. Thompson

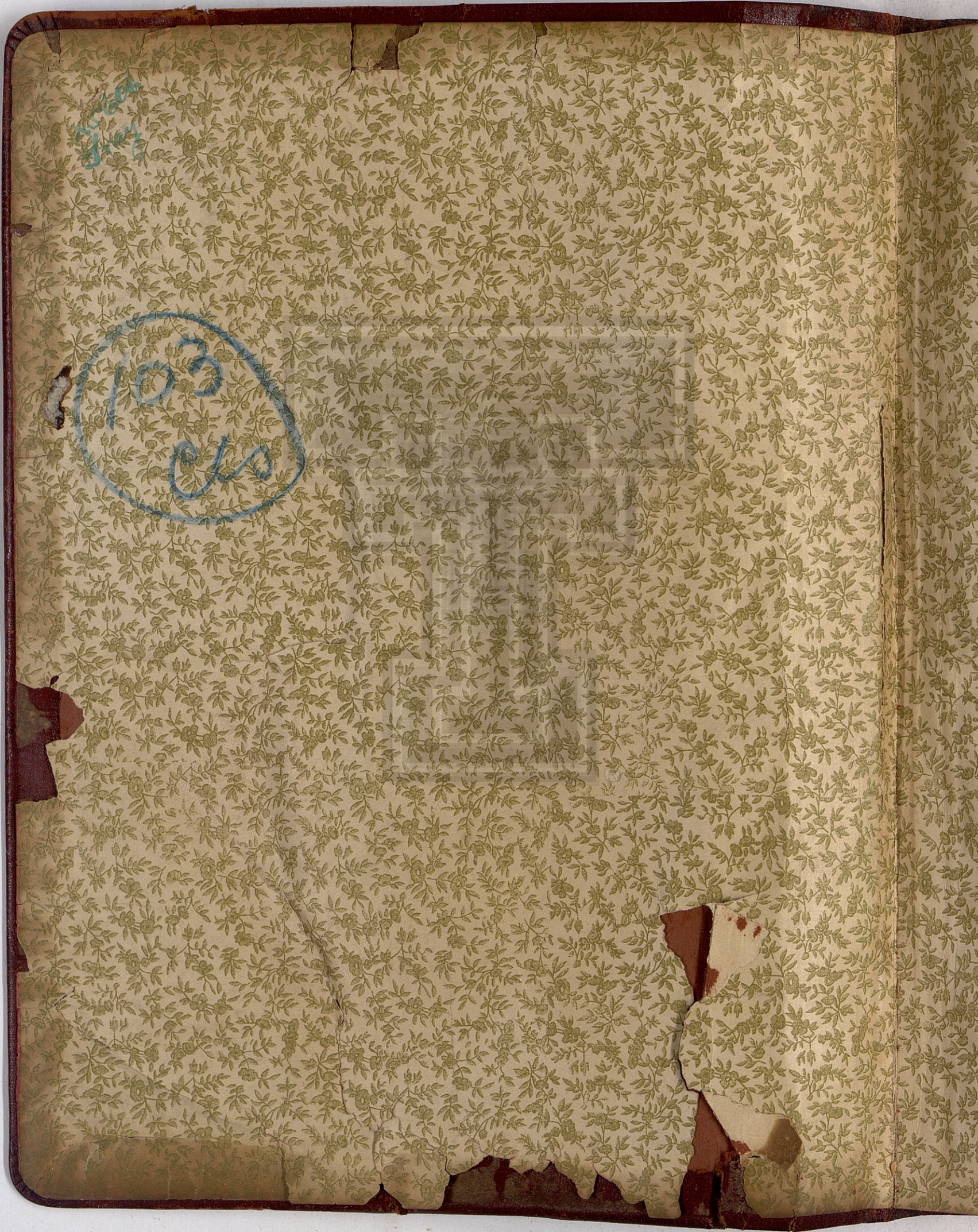
Block A, Hale County, H E & W T R R

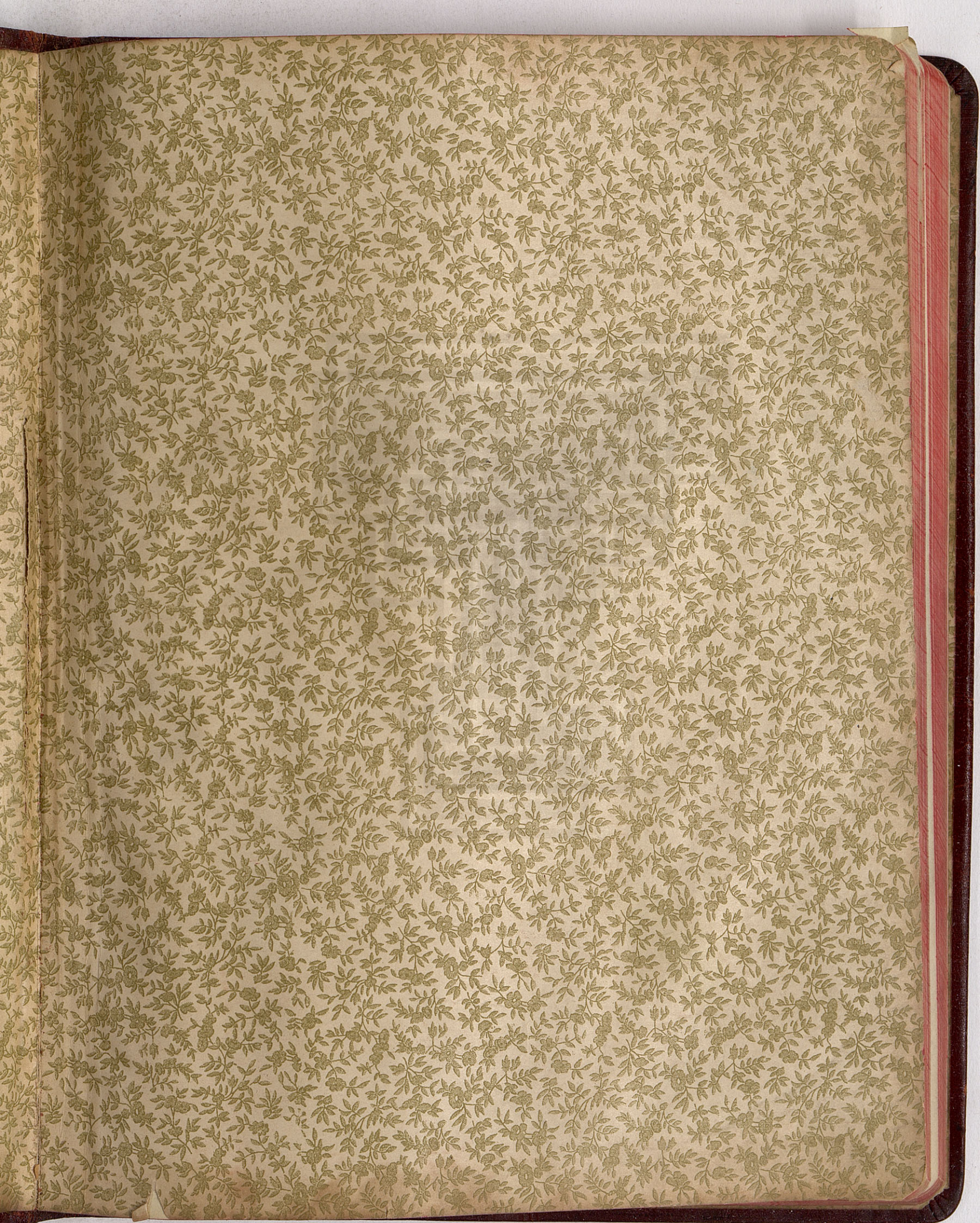
Block B, Lamb County, R. M. Thompson

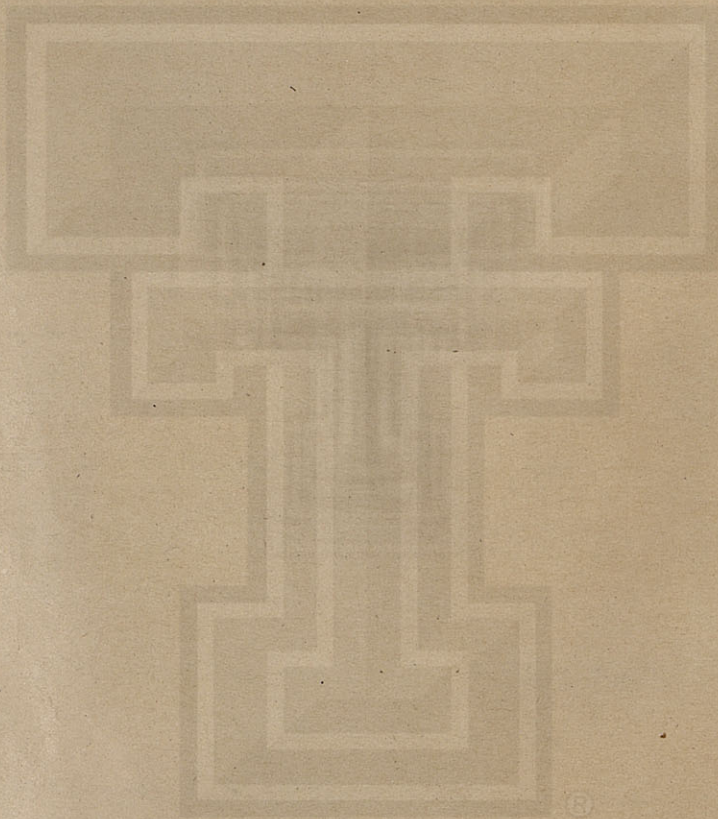
Block O-2, Hale & Lamb Counties, D & S E R R

Block O-5, Lamb County, D & S E R R

Block S-4, Hale & Lamb Counties, D & S E R R







True

bout

origi

ne,

(A

it

m

A

# THE STATE OF TEXAS

## LAMB COUNTY

Survey No. 5

Block No. M. O.

Grantee: J. N. Morrison &  
Bro.

For Sketch See  
Other Side

True Mag. Var.  $12^{\circ}$  E.

CORRECTED FIELD NOTES of a re-survey of 292.1 acres of land situated in Lamb County,  
about 8 miles N.  $3^{\circ}$  E. from Olton, same being Section No. 5, Block No. M: O.  
original Grantee, J. N. Morrison & Bro., made by me as State Surveyor, by virtue of Title LXXXIX, Chapter  
one, Revised Civil Statutes of 1895.

(All courses compared to a meridian passing through west side of Block and proved by observing Polaris, when in elongation. Azimuth  $1^{\circ} 25'$ )

BEGINNING AT an iron pipe and 2 pits set for the N.W. corner of sec.

No. 4, this Block, in the South line of section No. 1, Block S.5.;

Thence N.  $39^{\circ} 7' W.$  at 1174.5 varas set iron pipe and 2  
pits at the intersection of the south line of Section No. 1, Block S.  
5. with the East line of Section No. 1, Block T.2. as originally/  
surveyed;

Thence S.  $0^{\circ} 44' W.$  with the East line of Section No. 1, Block  
T.2, at 1404 varas set iron pipe and 2 pits 187.4 varas from its  
S.E. corner;

Thence S.  $E. 89^{\circ} 40' E.$  at 1184.3 varas set iron pipe and  
2 pits for the S.W. corner of Section No. 4, this Block;

Thence N.  $0^{\circ} 20' E.$  1392.6 varas to the place of beginning.

Bearings record true course.

W. J. WILLIAMS, Transitman.

CLAYTON WILLIAMS, } Chain Carriers.  
VERNON CURL, }

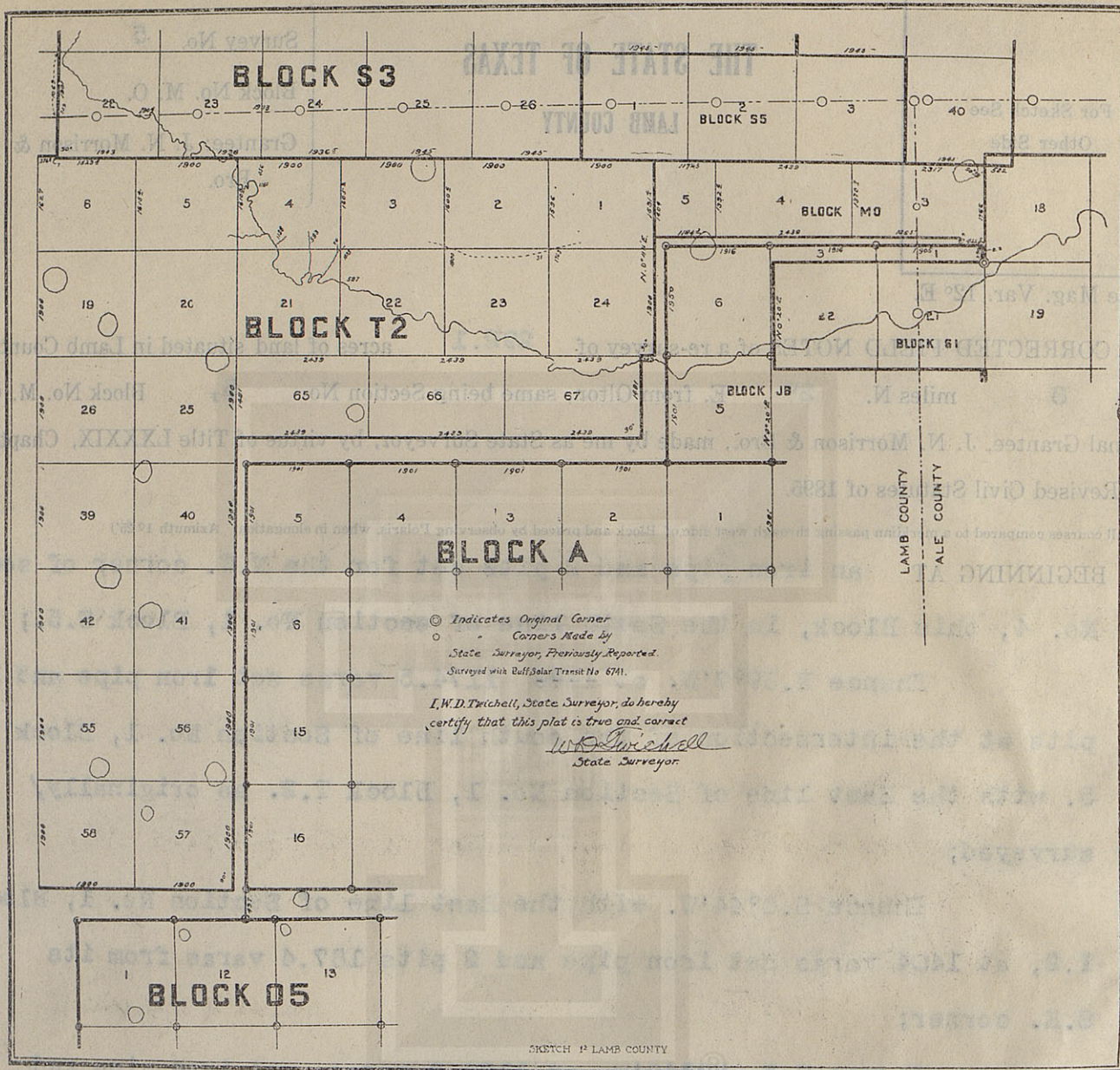
I, W. D. TWICHELL, State Surveyor, do hereby certify that the foregoing re-survey is correct and that  
it was made in the field, in accordance with law, and that the limits, boundaries and corners with the  
marks, natural and artificial, are truly and correctly described in the foregoing plat and field notes.

Re-surveyed 31 day of January, 1910.

APPROVED:

*W. D. Twichell*  
State Surveyor.

Commissioner General Land Office.



CLAYTON WILLIAMS } Chain Carriers.  
 VERNON CURTIS

I, W. D. TWICHELL, State Surveyor, do hereby certify that the foregoing survey is correct and that it was made in the field, in accordance with law, and that the limits, boundaries and corners with the marks, natural and artificial, are truly and correctly described in the foregoing plat and field notes.

Resurveyed 31 day of January, 1910.

APPROVED:

State Surveyor

Commissioner General Land Office

For Sketch See  
Other Side

# THE STATE OF TEXAS

LAMB COUNTY

Survey No. 4

Block No. M. O.

Grantee: J. N. Morrison &  
Bro.

True Mag. Var. 12° E.

CORRECTED FIELD NOTES of a re-survey of 596.6 acres of land situated in Lamb County, about 8 miles N. 10° E. from Olton, same being Section No. 4, Block No. M. O. Original Grantee, J. N. Morrison & Bro., made by me as State Surveyor, by virtue of Title LXXXIX, Chapter One, Revised Civil Statutes of 1895.

(All courses compared to a meridian passing through west side of Block and proved by observing Polaris, when in elongation. Azimuth 1° 25')

BEGINNING AT an iron pipe and 2 pits set in the South line of Section No. 3, Block S.5., for the N.W. corner of Section No. 3, this block;

Thence N.89°7'W. at 2439 varas set an iron pipe and 2 pits in the South line of Section No. 2, block S.5.;

Thence S.0°20'W. at 1392.6 varas set an iron pipe and 2 pits;

Thence S.89°40'E. at 2439 varas set an iron pipe and 3 pits for the S.W. corner of Section No. 3, this Block;

Thence N.0°20'E. 1370.7 varas to the place of beginning.

Bearings record true course.

W. J. WILLIAMS, Transitman.

CLAYTON WILLIAMS, } Chain Carriers.  
VERNON CURL, }

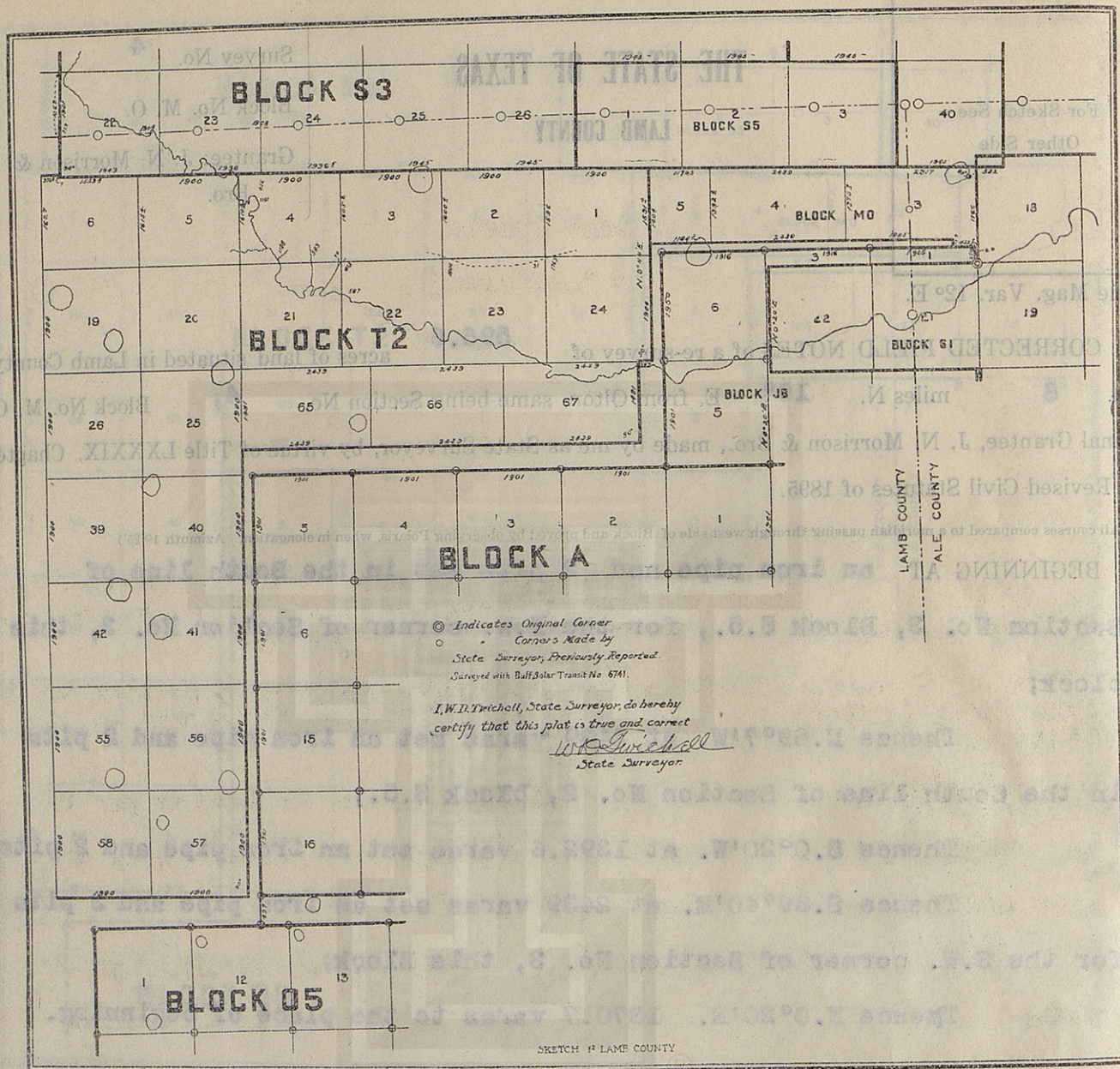
I, W. D. TWICHELL, State Surveyor, do hereby certify that the foregoing re-survey is correct and that it was made in the field, in accordance with law, and that the limits, boundaries and corners with the marks, natural and artificial, are truly and correctly described in the foregoing plat and field notes.

Re-surveyed 31 day of January, 1910.

APPROVED:

*W. D. Twichell*  
State Surveyor.

Commissioner General Land Office.



CLAYTON WILLIAMS, Chain Carriers.  
 VERNON CURTIS, State Surveyor.

I, W. D. TRICHELL, State Surveyor, do hereby certify that the foregoing re-survey is correct and that it was made in the field in accordance with law, and that the limits, boundaries and corners with the original, natural and artificial, are truly and correctly described in the foregoing plat and field notes.

Re-surveyed 21 day of January, 1910.

APPROVED: \_\_\_\_\_  
 State Surveyor.

Commissioner General Land Office.

For Sketch See  
Other Side

# THE STATE OF TEXAS

## LAMB COUNTY

and Hale County.

276 acres in Lamb County

291.5 acres in Lamb County.

True Mag. Var. 12° E.

Survey No. 3

Block No. M. O.

Grantee: J. N. Morrison &  
Bro.

CORRECTED FIELD NOTES of a re-survey of 567.5 acres of land situated in Lamb County, about 3 miles N. 13° E. from Olton, same being Section No. 3, Block No. M. O. Original Grantee, J. N. Morrison & Bro., made by me as State Surveyor, by virtue of Title LXXXIX, Chapter One, Revised Civil Statutes of 1895.

(All courses compared to a meridian passing through west side of Block and proved by observing Polaris, when in elongation. Azimuth 1° 25')

BEGINNING AT a stone marked + set for the S.W. corner of Section No. 18, Block S.1/, from which pipe of stones on gravelly knoll bears N.45°E. 269 varas (Original bearing to this corner);

Thence N.0°20'E. along the west line of said Section No. 18 1766 varas to where it intersects the South line of Section No. 40, Block S.2., set iron pipe and 4 pits;

Thence N.89°7'W. along the South line of section No. 40, and the South line of Section No. 3, Block S.5; at 2317 varas set iron pipe and 2 pits;

Thence S.0°20'W. at 1370.7 varas set an iron pipe and 3 pits;

Thence S.89°40'E at 1885 varas set iron pipe and 2 pits;

Thence S0°20'W. at 129 varas set iron pipe and 2 pits in the North line of Section No. 1, Block J.B.;

Thence S.89°40'E. at 422.7 varas pile of stones set by W.D. Twichell State Surveyor, for the N.E. corner of Said No.1, J.B.;

Thence S.0°20'W. 290 varas to N. line Section No. 21, S.1.;

Thence S.89°40'E. 9.3 vrs to place of beginning.

Bearings record true course.

W. J. WILLIAMS, Transitman.

CLAYTON WILLIAMS, } Chain Carriers.  
VERNON CURL, }

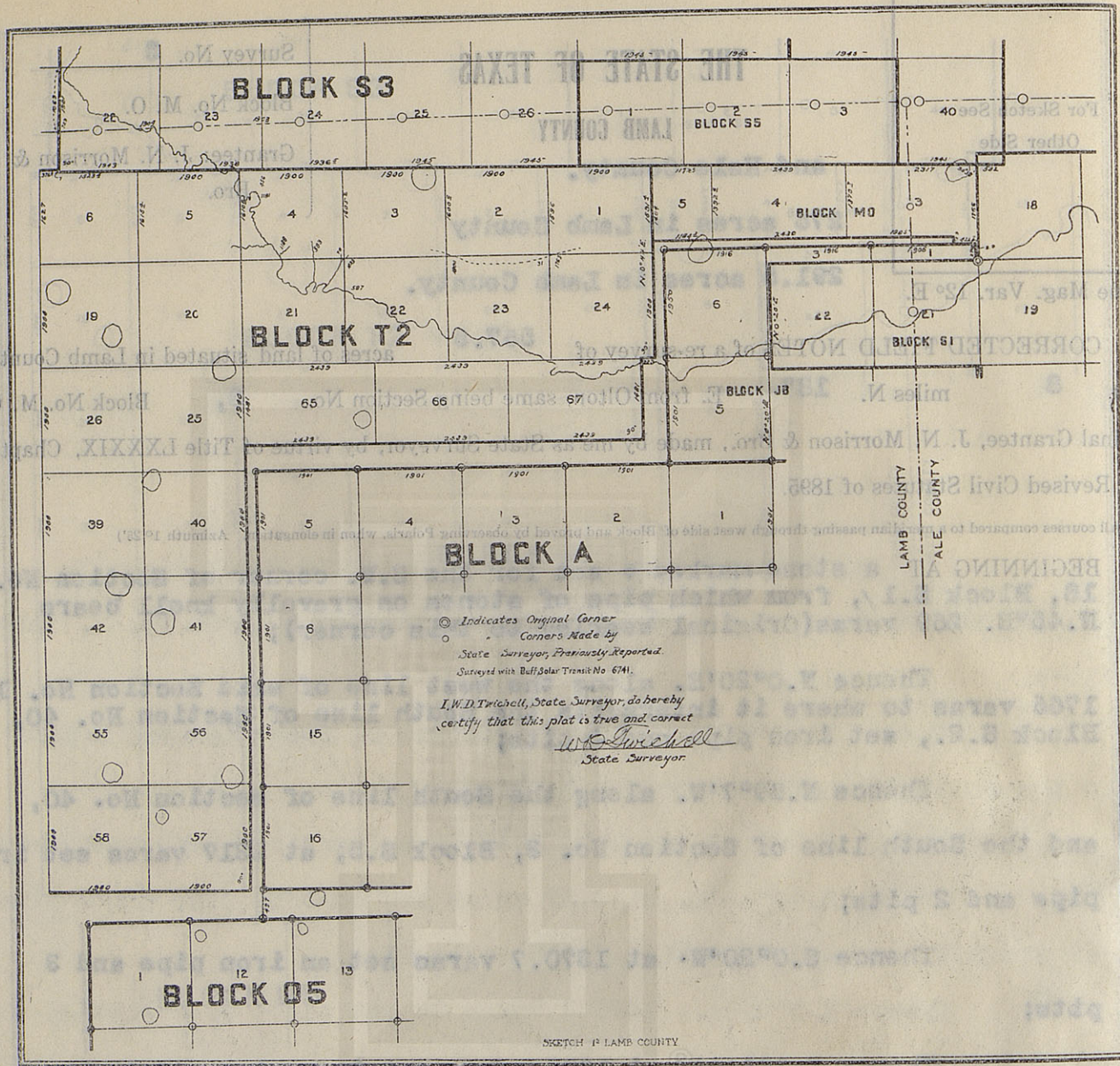
I, W. D. TWICHELL, State Surveyor, do hereby certify that the foregoing re-survey is correct and that it was made in the field, in accordance with law, and that the limits, boundaries and corners with the marks, natural and artificial, are truly and correctly described in the foregoing plat and field notes.

Re-surveyed 31<sup>st</sup> day of January, 1910.

APPROVED:

*W. D. Twichell*  
State Surveyor.

Commissioner General Land Office.



Commissioner General Land Office.

Re-surveyed 31st day of January, 1910.

APPROVED:

I. W. D. TRICHELL, State Surveyor, do hereby certify that the foregoing re-survey is correct and that it was made in the field, in accordance with law, and that the limits, boundaries and corners with the marks, natural and artificial, are truly and correctly described in the foregoing plat and field notes.

CLAYTON WILLIAMS, Chain Carriers.  
 VERNON CURTIS, Chain Carriers.

W. J. WILLIAMS, Transmittal.

Bearings record true course.

For Sketch See  
Other Side

# THE STATE OF TEXAS

LAMB COUNTY

Survey No. 1

Block No. T. 2.

Grantee: R. M. Thompson.

True Mag. Var. 12° E.

CORRECTED FIELD NOTES of a re-survey of 536.5 acres of land situated in Lamb County, about 8 miles N. 4°W. from Olton, same being Section No. 1 Block No. T. 2. Original Grantee, R. M. Thompson made by me as State Surveyor, by virtue of Title LXXXIX, Chapter One, Revised Civil Statutes of 1895.

(All courses compared to a meridian passing through east side of Block and proved by observing Polaris, when in elongation. Azimuth 1° 25')

BEGINNING AT an iron pipe and 4 pits form which pile of of stones on knoll, 269 varas N.45°E. from the S.W. corner of section No. 18, Block S.1. bears S.89°16'E. 6132 varas;

Thence N.89°16'W. at 1763 varas cross McKenzies trail, at 1900 varas set iron pipe in 2 pits 31 varas north of McKenzie's trail;

Thence N.0°44'E. at 1596 varas set iron pipe and 2 pits under fence in the south line of section No. 26, Block S.3;

Thence S.89°~~38~~<sup>37</sup>'E. at 1900 varas set iron pipe in 2 pits in the south line of section No. 1, Block S.5;

Thence S.0°44'W. 1591.4 varas to the place of beginning.

Bearings record angles from line.

W. J. WILLIAMS, Transitman.

CLAYTON WILLIAMS, } Chain Carriers.  
VERNON CURL,

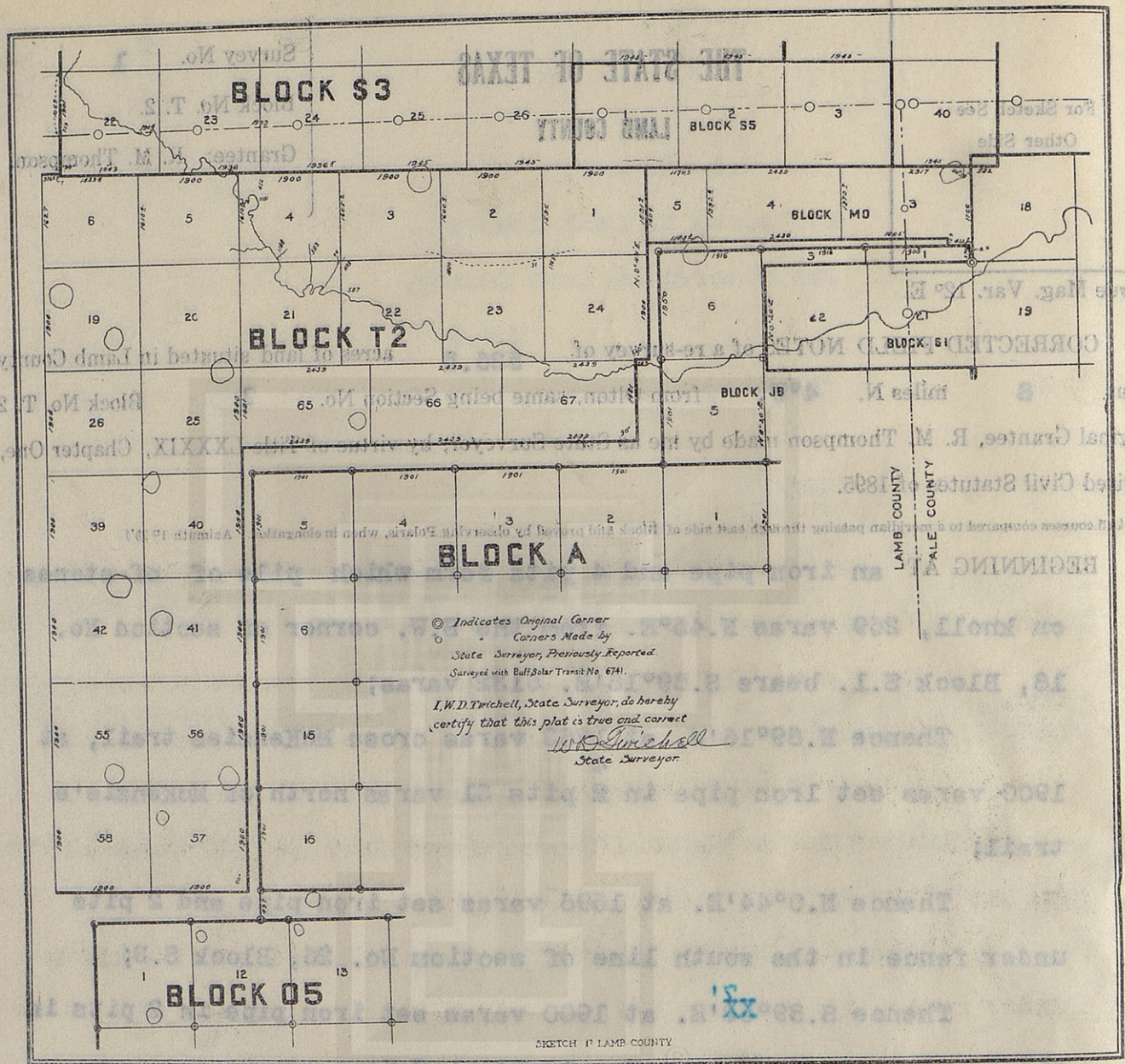
I, W. D. TWICHELL, State Surveyor, do hereby certify that the foregoing re-survey is correct and that it was made in the field, in accordance with law, and that the limits, boundaries and corners with the marks, natural and artificial, are truly and correctly described in the foregoing plat and field notes.

Re-surveyed 24 day of January, 1910.

APPROVED:

*W. D. Twichell*  
State Surveyor.

Commissioner General Land Office.



Re-surveyed 24 day of January, 1910.

APPROVED:

Commissioner General Land Office.

I, W. D. TWICHELL, State Surveyor, do hereby certify that the foregoing re-survey is correct and that was made in the field, in accordance with law, and that the limits, boundaries and corners with the marks, natural and artificial, are truly and correctly described in the foregoing plat and field notes.

CLAYTON WILLIAMS, Chain Carrier.  
VERNON CULLEN, Chain Carrier.

W. J. WILLIAMS, Transcriber.

Bearings record angles from line.

For Sketch See  
Other Side

# THE STATE OF TEXAS

LAMB COUNTY

Survey No. 2

Block No. T. 2.

Grantee: R. M. Thompson.

True Mag. Var. 12° E.

CORRECTED FIELD NOTES of a re-survey of 598 acres of land situated in Lamb County, about 8 miles N. 10° W. from Olton, same being Section No. 2 Block No. T. 2. Original Grantee, R. M. Thompson made by me as State Surveyor, by virtue of Title LXXXIX, Chapter One, Revised Civil Statutes of 1895.

(All courses compared to a meridian passing through east side of Block and proved by observing Polaris, when in elongation. Azimuth 1° 25')

BEGINNING AT an iron pipe set in 4 pits for the S.W. corner of section No. 1, this Block;

Thence N. 39° 16' W. at 1800 varas cross McKenzie's trail, at 1900 varas set iron pipe in 2 pits from which wind mill bears N. 83° 13' E., another bears N. 86° 55' W.;

Thence N. 0° 44' E. at 1600.6 varas set iron pipe in 2 pits, in the south line of section No. 25, Block S. 3.;

Thence S. 39° 16' E. at 1900 varas set iron pipe in 2 pits under fence, in the south line of section No. 26, Block S. 3., from which wind mill bears S. 26° 23' W., another N. 18° 34' E.;

Thence S. 0° 44' W. 1596 varas to the place of beginning.

Bearings record angles from line.

W. J. WILLIAMS, Transitman.

CLAYTON WILLIAMS, } Chain Carriers.  
VERNON CURL, }

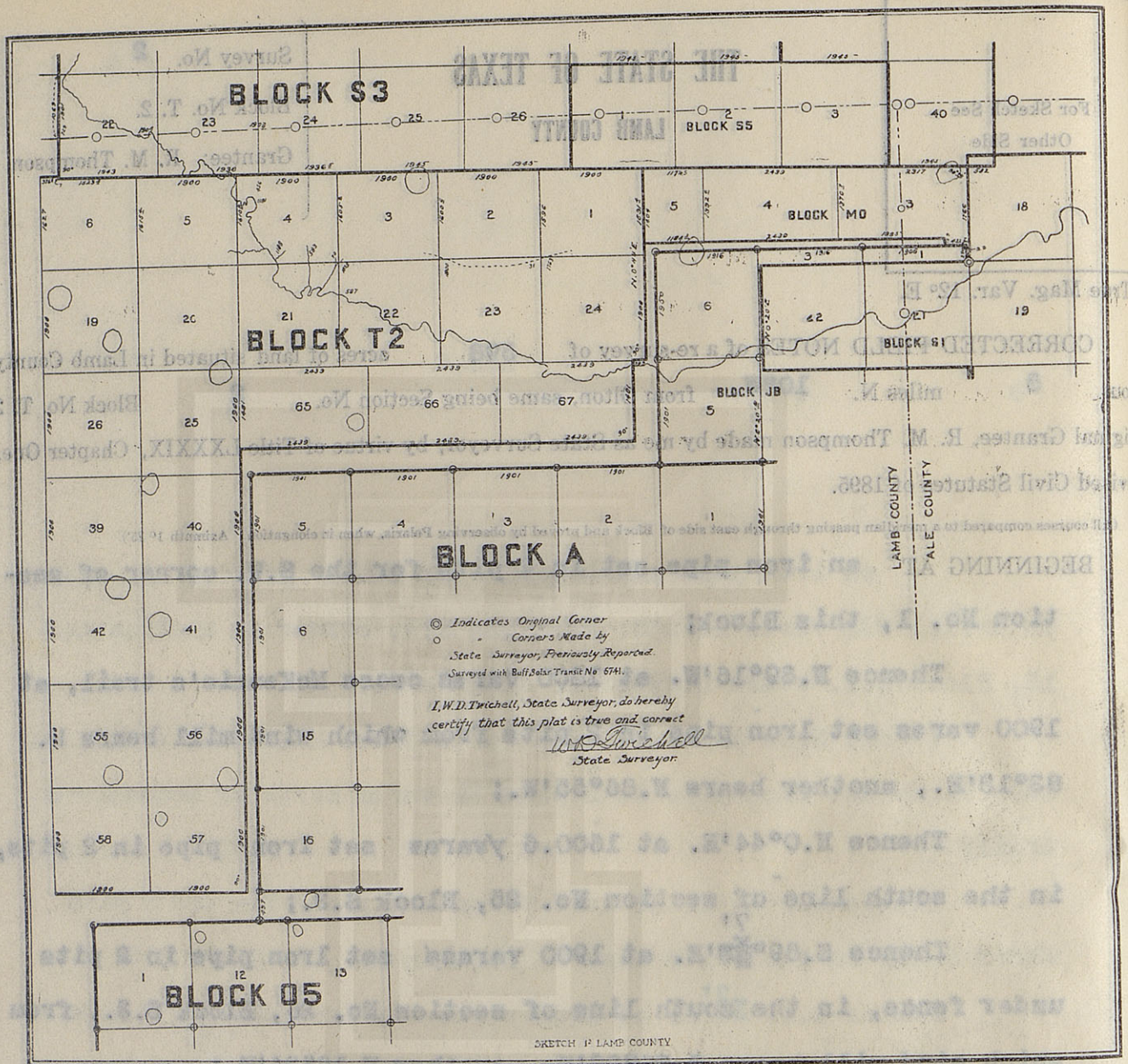
I, W. D. TWICHELL, State Surveyor, do hereby certify that the foregoing re-survey is correct and that it was made in the field, in accordance with law, and that the limits, boundaries and corners with the marks, natural and artificial, are truly and correctly described in the foregoing plat and field notes.

Re-surveyed 24th day of January, 1910.

APPROVED:

*W. D. Twichell*  
State Surveyor.

Commissioner General Land Office.



Re-surveyed day of January, 1910.

APPROVED:

Commissioner General Land Office

State Surveyor

I, W. D. TWICHELL, State Surveyor, do hereby certify that the foregoing re-survey is correct and that it was made in the field, in accordance with law, and that the limits, boundaries and corners with the marks, natural and artificial, are truly and correctly described in the foregoing plat and field notes.

CLAYTON WILLIAMS, } Chain Carriers.  
 VERNON GUNN, }

Bearings record angles from line.

W. J. WILLIAMS, Transientman.

For Sketch See  
Other Side

# THE STATE OF TEXAS

LAMB COUNTY

Survey No. 3

Block No. T. 2.

Grantee: R. M. Thompson.

True Mag. Var.  $12^{\circ}$  E.

CORRECTED FIELD NOTES of a re-survey of 539.6 acres of land situated in Lamb County, about 8 miles N.  $14^{\circ}$  W. from Olton, same being Section No. 3 Block No. T. 2. Original Grantee, R. M. Thompson made by me as State Surveyor, by virtue of Title LXXXIX, Chapter One, Revised Civil Statutes of 1895.

(All courses compared to a meridian passing through east side of Block and proved by observing Polaris, when in elongation. Azimuth  $1^{\circ} 25'$ )

BEGINNING AT an iron pipe set in 2 pits for the S.W. corner of Section No. 2, this block, from which wind mill bears  $S.58^{\circ}45'W.$ ;

Thence N.  $89^{\circ}16'W.$  at <sup>1893</sup> ~~1893~~ varas cross swag, at 1900 varas set iron pipe and dry cell battery in 2 pits, from which wind mill bears  $S.42^{\circ}58'W.$ ;

Thence N.  $0^{\circ}16'E.$  at 1605.2 varas set iron pipe 1 varas west of corner of fence and in the south line of Section No. 24, Block S.3., wind mill bears  $N.38^{\circ}7'W.$ , another  $S.31^{\circ}18'E.$ ;

Thence  $S.89^{\circ}7'E.$  at 1900 varas set iron pipe in 2 pits, the N.W. corner of Section No. 2, this Block in the South line of Section No. 25, Block S.3., Tilson's pipe 7.5 varas North, wind-mill  $S.3^{\circ}58'E.$ ;

Thence  $S.0^{\circ}44'W.$  1600.6 varas to the place of beginning.

Bearings record angles from line.

W. J. WILLIAMS, Transitman.

CLAYTON WILLIAMS, } Chain Carriers.  
VERNON CURL, }

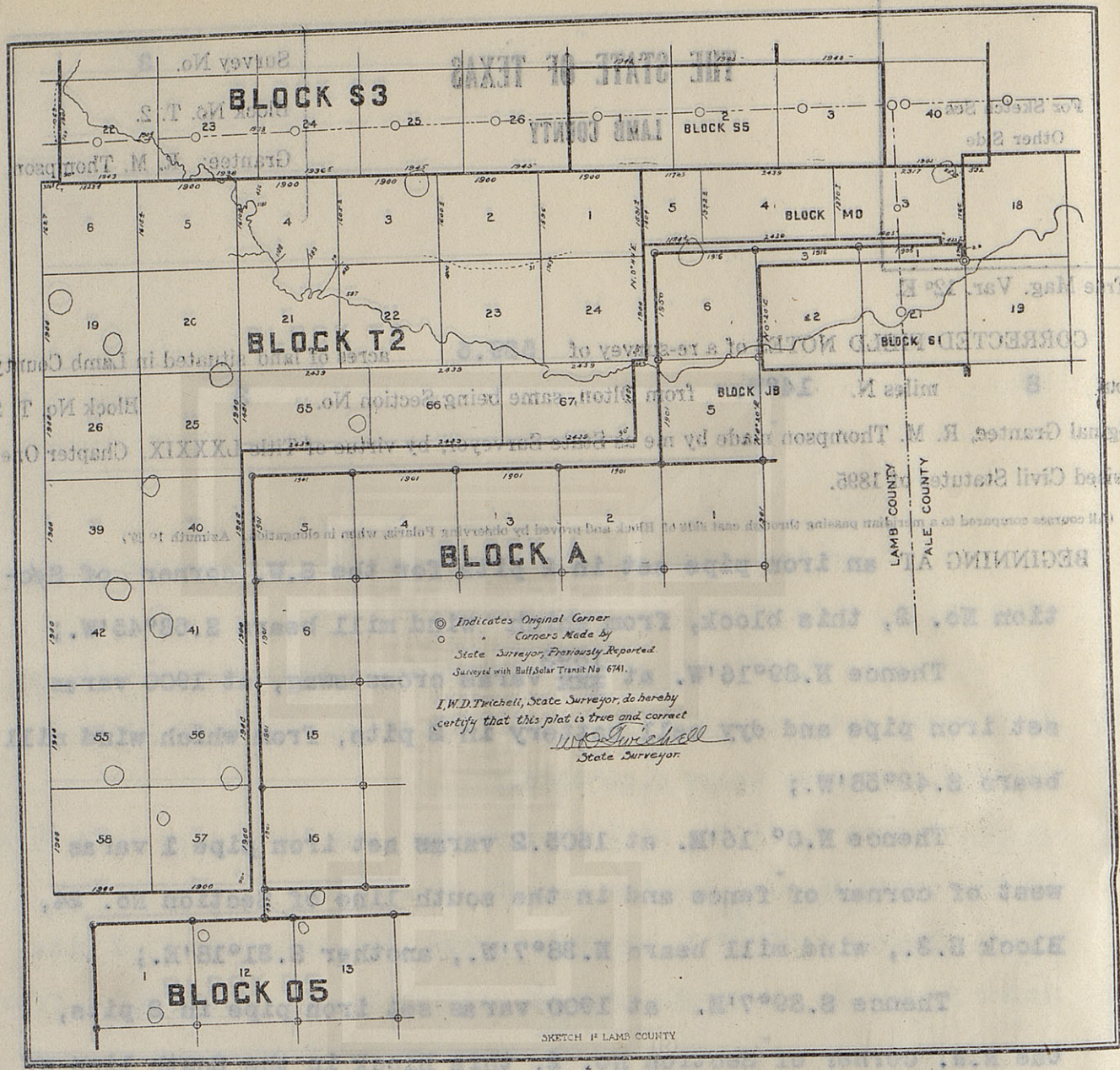
I, W. D. TWICHELL, State Surveyor, do hereby certify that the foregoing re-survey is correct and that it was made in the field, in accordance with law, and that the limits, boundaries and corners with the marks, natural and artificial, are truly and correctly described in the foregoing plat and field notes.

Re-surveyed 24<sup>th</sup> day of January, 1910.

APPROVED:

*W. D. Twichell*  
State Surveyor.

Commissioner General Land Office.



CLAYTON WILLIAMS, Chain Carrier  
VERNON CURTIS

I, W. D. TWICHELL, State Surveyor, do hereby certify that the foregoing re-survey is correct and that was made in the field, in accordance with law, and that the limits, boundaries and corners with the natural and artificial, are truly and correctly described in the foregoing plat and field notes.

Re-surveyed 24th day of January, 1910.

State Surveyor

Commissioner General Land Office

# THE STATE OF TEXAS

LAMB COUNTY

For Sketch See  
Other Side

Survey No. 4

Block No. T. 2.

Grantee: R. M. Thompson.

True Mag. Var. 12° E.

CORRECTED FIELD NOTES of a re-survey of 541.4 acres of land situated in Lamb County, about 8 miles N. 22° W. from Olton, same being Section No. 4 Block No. T. 2. Original Grantee, R. M. Thompson made by me as State Surveyor, by virtue of Title LXXXIX, Chapter One, Revised Civil Statutes of 1895.

(All courses compared to a meridian passing through east side of Block and proved by observing Polaris, when in elongation. Azimuth 1° 25')

BEGINNING AT an iron pipe and dry cell battery set in 2 pits for the S.W. corner of Section No. 3, this block, wind mill bears N.60°17'E.

Thence N.89°16'W. at 70 varas cross swag, at 583 varas cross draw, at 1138 varas cross creek, at 1900 varas set iron pipe in 2 pits, wind mill bears N.3°39'E.;

Thence N.0°44'E. at 256 varas cross draw, at 1181 varas cross creek, at 1610.8 varas set iron pipe in 2 pits, at the South line of Section No. 23, Block S.3., wind mill bears S.2°7'E.

Thence S.89°7'E. at 456 varas pass stake and 2 pits, the S.E. corner of Section No. 23, at 1900 varas set iron pipe 1 vara west of corner of fence, in the south line of Section No. 24, Block S.3., wind mill bears N.61°22'E.;

Thence S.0°44'W. 1605.2 varas to the place of beginning.

Bearings record angles from line.

W. J. WILLIAMS, Transitman.

CLAYTON WILLIAMS, } Chain Carriers.  
VERNON CURL, }

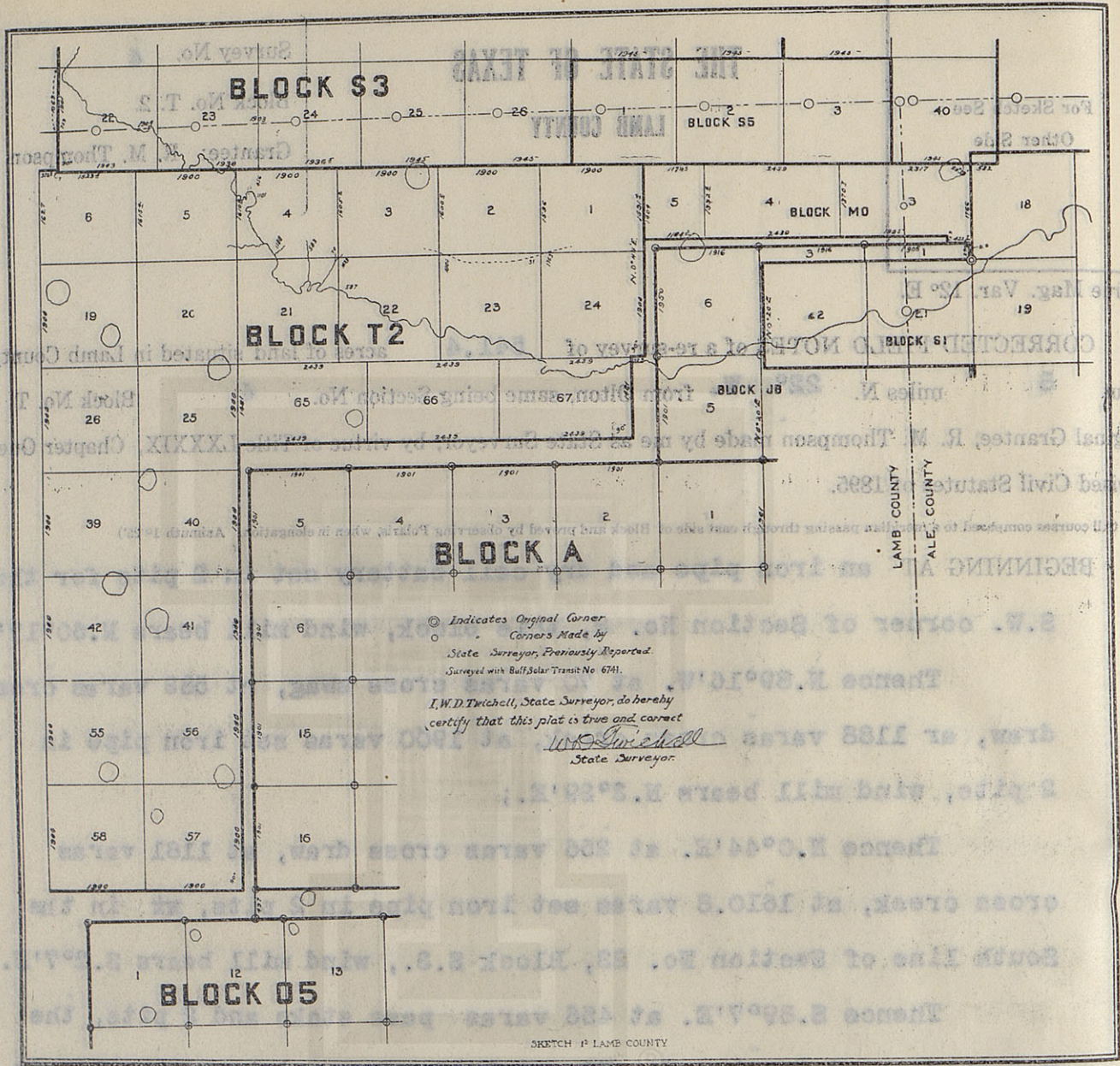
I, W. D. TWICHELL, State Surveyor, do hereby certify that the foregoing re-survey is correct and that it was made in the field, in accordance with law, and that the limits, boundaries and corners with the marks, natural and artificial, are truly and correctly described in the foregoing plat and field notes.

Re-surveyed 24 day of January, 1910.

APPROVED:

*W. D. Twichell*  
State Surveyor.

Commissioner General Land Office.



CLAYTON WILLIAMS, Chain Carriers.  
VERNON CURT.

I, W. D. TWICHELL, State Surveyor, do hereby certify that the foregoing re-survey is correct and that was made in the field, in accordance with law, and that the limits, boundaries and corners with the marks, natural and artificial, are truly and correctly described in the foregoing plat and field notes.

1910

State Surveyor

Commissioner General Land Office

For Sketch See  
Other Side

# THE STATE OF TEXAS

LAMB COUNTY

Survey No. 5

Block No. T. 2.

Grantee: R. M. Thompson.

True Mag. Var. 12° E.

CORRECTED FIELD NOTES of a re-survey of 543.1 acres of land situated in Lamb County, about 9 miles N. 27° W. from Olton, same being Section No. 5 Block No. T. 2. Original Grantee, R. M. Thompson made by me as State Surveyor, by virtue of Title LXXXIX, Chapter One, Revised Civil Statutes of 1895.

(All courses compared to a meridian passing through east side of Block and proved by observing Polaris, when in elongation. Azimuth 1° 25')

BEGINNING AT an iron pipe set in two pits for the S.W. corner of Section No. 4, this block, windmill bears S.65°9'E.;

Thence N.0°44'E. at 256 varas cross draw, at 1181 varas cross creek, at 1610 3/8 varas set iron pipe and 2 pits for the N.W. corner of Section No. 4, this Block in the South line of Section No. 23, Block S.3;

Thence N.89°7'W. at 1900 varas set iron pipe and 2 pits in the south line of Section No. 22, Block S.3. windmill bears N.35°58'E.;

Thence S.0°44'W. at 1615.4 varas set iron pipe in 2 pits, wind mill bears N.25°25'E. another S.26°36'E.

Thence S.89°16'E. 1900 varas to the place of beginning.

Bearings record angles from line.

W. J. WILLIAMS, Transitman.

CLAYTON WILLIAMS, } Chain Carriers.  
VERNON CURL, }

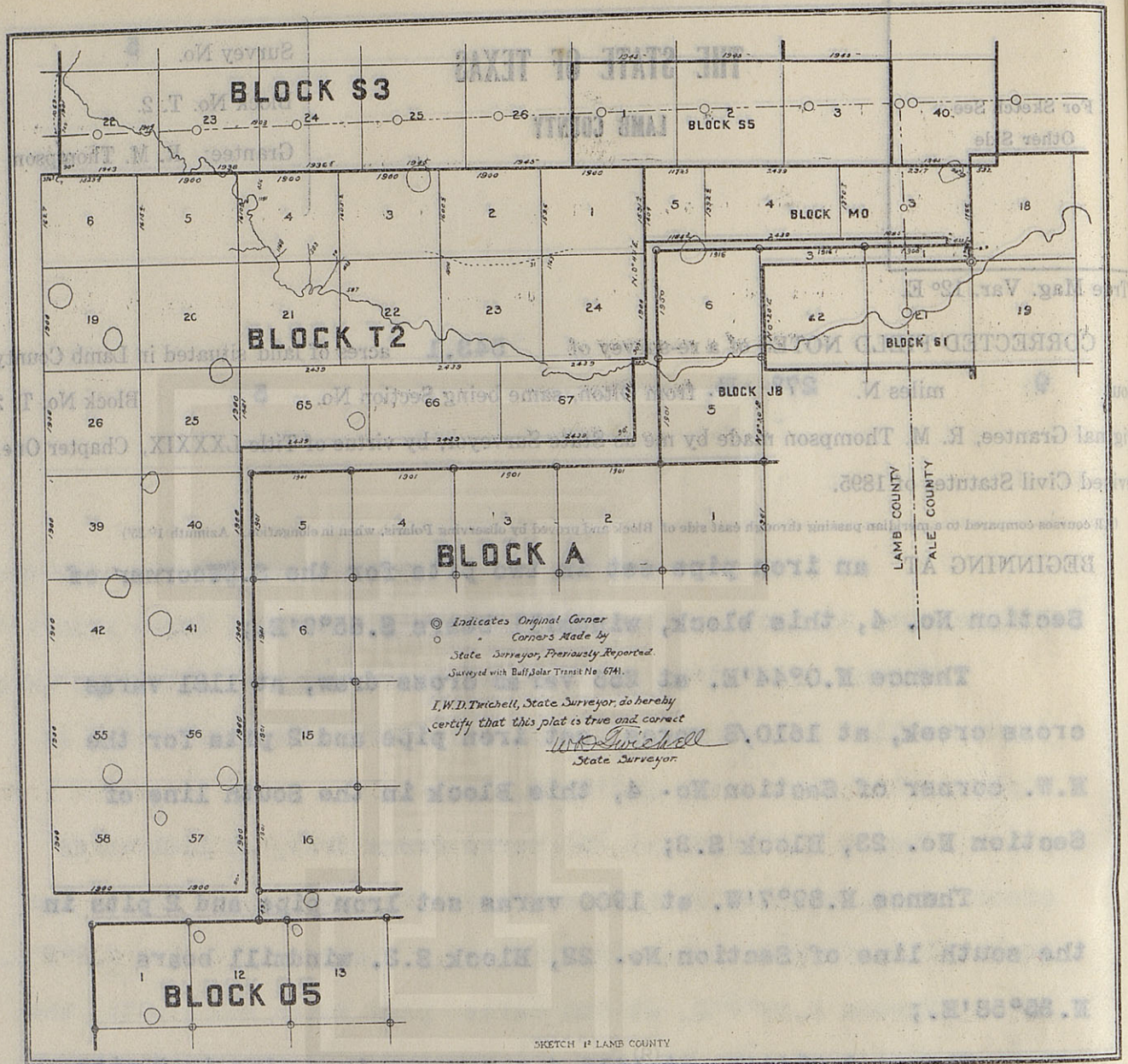
I, W. D. TWICHELL, State Surveyor, do hereby certify that the foregoing re-survey is correct and that it was made in the field, in accordance with law, and that the limits, boundaries and corners with the marks, natural and artificial, are truly and correctly described in the foregoing plat and field notes.

Re-surveyed 24 day of January, 1910.

APPROVED:

*W. D. Twichell*  
State Surveyor.

Commissioner General Land Office.



W. J. WILLIAMS, Townsman.  
Bearings record angles from line.  
I, W. D. TWICHELL, State Surveyor, do hereby certify that the foregoing re-survey is correct and that  
was made in the field, in accordance with law, and that the limits, boundaries and corners with the  
natural and artificial, are truly and correctly described in the foregoing plat and field notes.

Re-surveyed 24 day of January, 1910.

State Surveyor

Commissioner General Land Office

For Sketch See  
Other Side

# THE STATE OF TEXAS

LAMB COUNTY

Survey No. 6

Block No. T. 2.

Grantee: R. M. Thompson.

True Mag. Var.  $12^{\circ}$  E.

CORRECTED FIELD NOTES of a re-survey of 545 acres of land situated in Lamb County,  
about 9 miles N.  $32^{\circ}$  W from Olton, same being Section No. 6 Block No. T. 2.  
Original Grantee, R. M. Thompson made by me as State Surveyor, by virtue of Title LXXXIX, Chapter One,  
Revised Civil Statutes of 1895.

(All courses compared to a meridian passing through east side of Block and proved by observing Polaris, when in elongation. Azimuth  $1^{\circ} 25'$ )

BEGINNING AT an iron pipe and 2 pits set for the S.W. corner of

Section No. 5, this block, windmill bears S.  $40^{\circ} 25' E$ .

Thence N.  $89^{\circ} 16' W$ . at 1900 varas made 2 pits from which  $\times$   
iron pipe under fence bears east 24 feet;

Thence N.  $0^{\circ} 44' E$ . at 1627 varas set 3 pits from which iron  
pipe marked 32 Blk 1 set in 2 pits bears N.  $89^{\circ} 7' W$ . 55.4 varas;

Thence S.  $89^{\circ} 7' E$ . at 13 varas pass iron pipe under fence,  
at 376.6 varas iron pipe and 3 pits in the west line of section  
No. 22, Block S. 3;

Thence S.  $0^{\circ} 53' W$ . 7 varas to an iron pipe and 2 pits, the  
S.W. corner of said Section No. 22;

Thence S.  $89^{\circ} 7' E$ . at 1523.4 varas set iron pipe in 2 pits  
for the N.W. corner of Section No. 5 this Block and in the south  
line of section No. 22;

Bearings record angles from line.

W. J. WILLIAMS, Transitman. Thence S.  $0^{\circ} 44' W$ . 1615.4 varas to the place  
of beginning.

CLAYTON WILLIAMS, } Chain Carriers.  
VERNON CURL, }

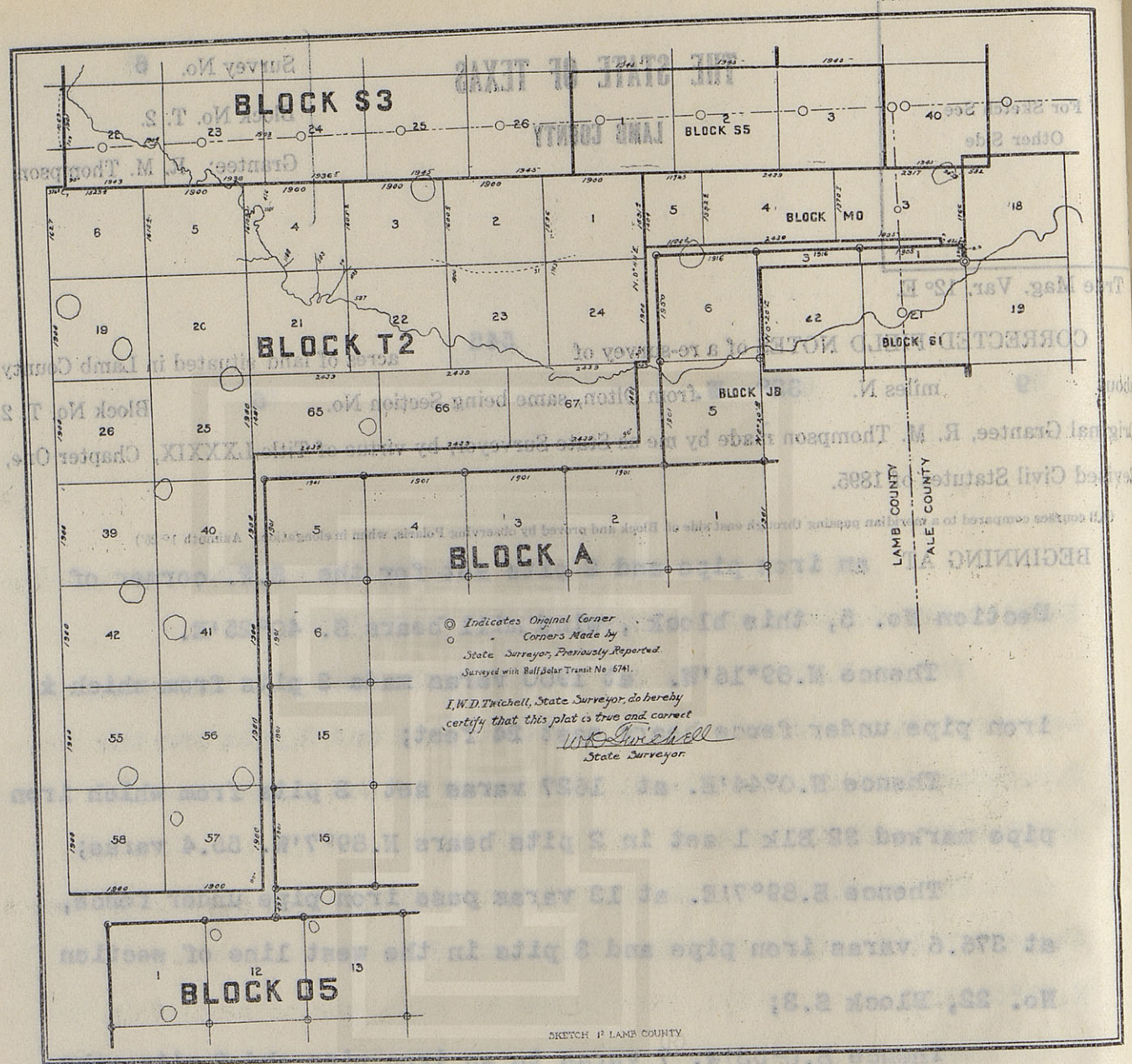
I, W. D. TWICHELL, State Surveyor, do hereby certify that the foregoing re-survey is correct and that  
it was made in the field, in accordance with law, and that the limits, boundaries and corners with the  
marks, natural and artificial, are truly and correctly described in the foregoing plat and field notes.

Re-surveyed 24<sup>th</sup> day of January, 1910.

APPROVED:

*W. D. Twichell*  
State Surveyor.

Commissioner General Land Office.



W. J. Williams, Transmitter of beginning.

Bearings record angles from line.

Thence S. 0° 44' W. 1015.4 varas to the place

for the N.W. corner of Section No. 5 this Block and in the south

line of section No. 22;

Thence S. 82° 7' E. at 1823.4 varas set iron pipe in 2 pits

E.W. corner of said Section No. 22;

Re-surveyed 24th day of January, 1910.

I, W. D. Twichell, State Surveyor, do hereby certify that the foregoing re-survey is correct and that

was made in the field, in accordance with law, and that the limits, boundaries and corners with the

works, natural and artificial, are truly and correctly described in the foregoing plat and field notes.

CLAYTON WILLIAMS, Chain Carriers.  
 VERNON CURT.

State Surveyor

Commissioner General Land Office

For Sketch See  
Other Side

# THE STATE OF TEXAS

LAMB COUNTY

Survey No. 19

Block No. T. 2.

Grantee: R. M. Thompson.

True Mag. Var. 12° E.

CORRECTED FIELD NOTES of a re-survey of 640 acres of land situated in Lamb County, about 9 miles N. 36° W. from Olton, same being Section No. 19 Block No. T. 2. Original Grantee, R. M. Thompson made by me as State Surveyor, by virtue of Title LXXXIX, Chapter One, Revised Civil Statutes of 1895.

(All courses compared to a meridian passing through east side of Block and proved by observing Polaris, when in elongation. Azimuth 1° 25')

BEGINNING AT 2 pits made for the S.W. corner of Section No. 6, this block; wind mill bears S. 50°36'E;

Thence S. 89°16'E. at 24 feet pass iron pipe under fence, at 1900 varas set iron pipe in 2 pits for the S.W. corner of Section No. 5, this block, wind mill bears S. 27°37'E.;

Thence S. 0°44'W. at 1900 varas set iron pipe and 2 pits;

Thence N. 89°16'W. at 1894.3 varas pass iron pipe under fence, at 1900 varas made 2 pits;

Thence N. 0°44'E. 1900 varas to the place of beginning.

Bearings record angles from line.

W. J. WILLIAMS, Transitman.

CLAYTON WILLIAMS, } Chain Carriers.  
VERNON CURL, }

I, W. D. TWICHELL, State Surveyor, do hereby certify that the foregoing re-survey is correct and that it was made in the field, in accordance with law, and that the limits, boundaries and corners with the marks, natural and artificial, are truly and correctly described in the foregoing plat and field notes.

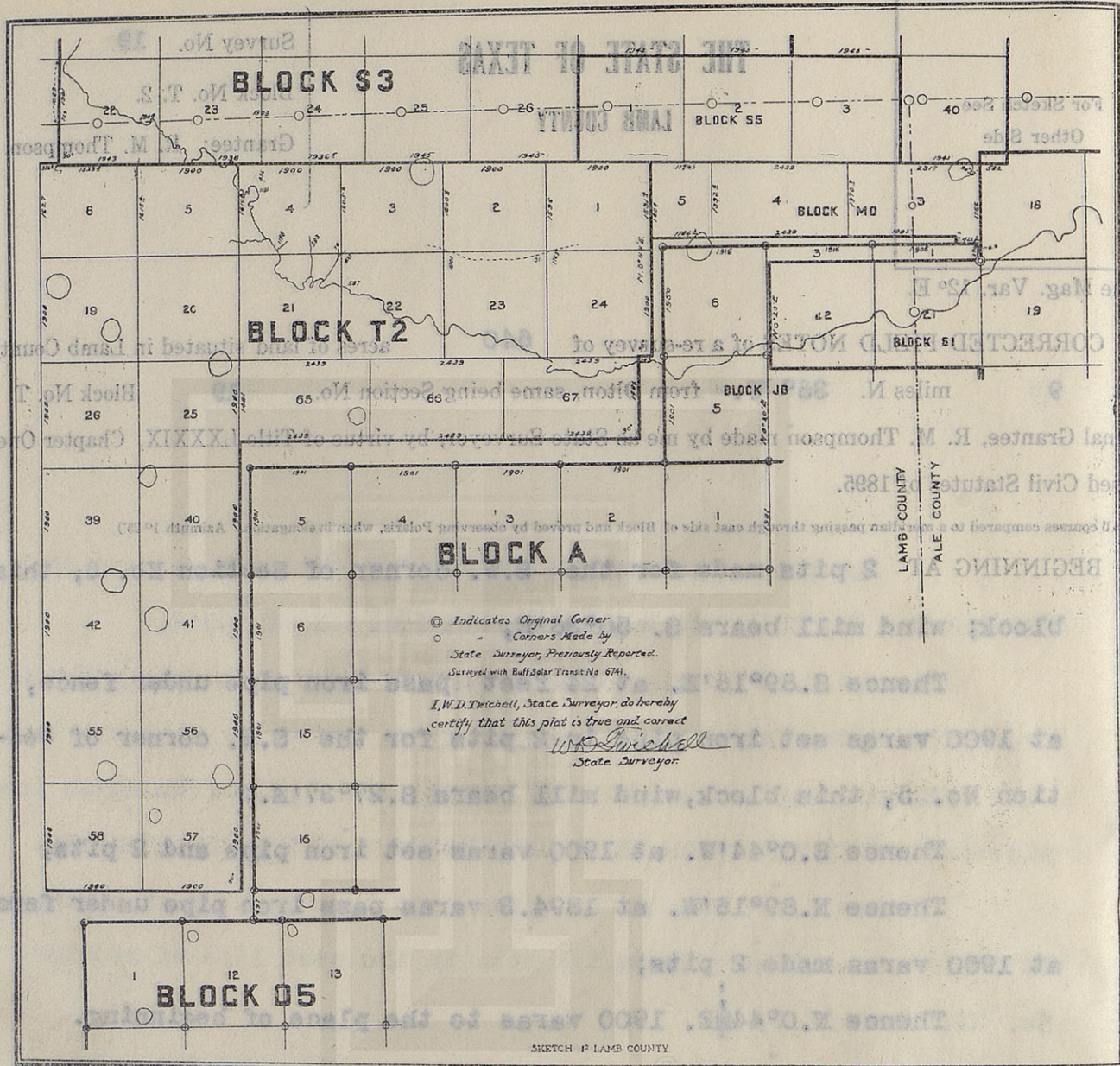
Re-surveyed 24<sup>th</sup> day of January, 1910.

APPROVED:

*W. D. Twichell*

State Surveyor.

Commissioner General Land Office.



CLAYTON WILLIAMS, Chain Carrier.  
 VERNON CURT

I, W. D. TWICHELL, State Surveyor, do hereby certify that the foregoing re-survey is correct and that  
 was made in the field, in accordance with law, and that the limits, boundaries and corners with the  
 marks, natural and artificial, are truly and correctly described in the foregoing plat and field notes.

Re-surveyed 24th day of January, 1910.

State Surveyor.

Commissioner General Land Office.

For Sketch See  
Other Side

# THE STATE OF TEXAS

LAMB COUNTY

Survey No. 20

Block No. T. 2.

Grantee: R. M. Thompson.

True Mag. Var. 12° E.

CORRECTED FIELD NOTES of a re-survey of 640 acres of land situated in Lamb County, about 8 miles N. 30° W. from Olton, same being Section No. 20 Block No. T. 2. Original Grantee, R. M. Thompson made by me as State Surveyor, by virtue of Title LXXXIX, Chapter One, Revised Civil Statutes of 1895.

(All courses compared to a meridian passing through east side of Block and proved by observing Polaris, when in elongation. Azimuth 1° 25')

BEGINNING AT an iron pipe set in 2 pits for the S.E. corner of Section No. 19, this Block;

Thence S. 89° 18' E. at 1900 varas set iron pipe in 2 pits;

Thence N. 0° 44' E. 1900 varas to an iron pipe and stone set in 2 pits for the S.W. corner of Section No. 4, this Block;

Thence N. 89° 16' W. at 1900 varas, the place of beginning.

Bearings record angles from line.

W. J. WILLIAMS, Transitman.

CLAYTON WILLIAMS, } Chain Carriers.  
VERNON CURL, }

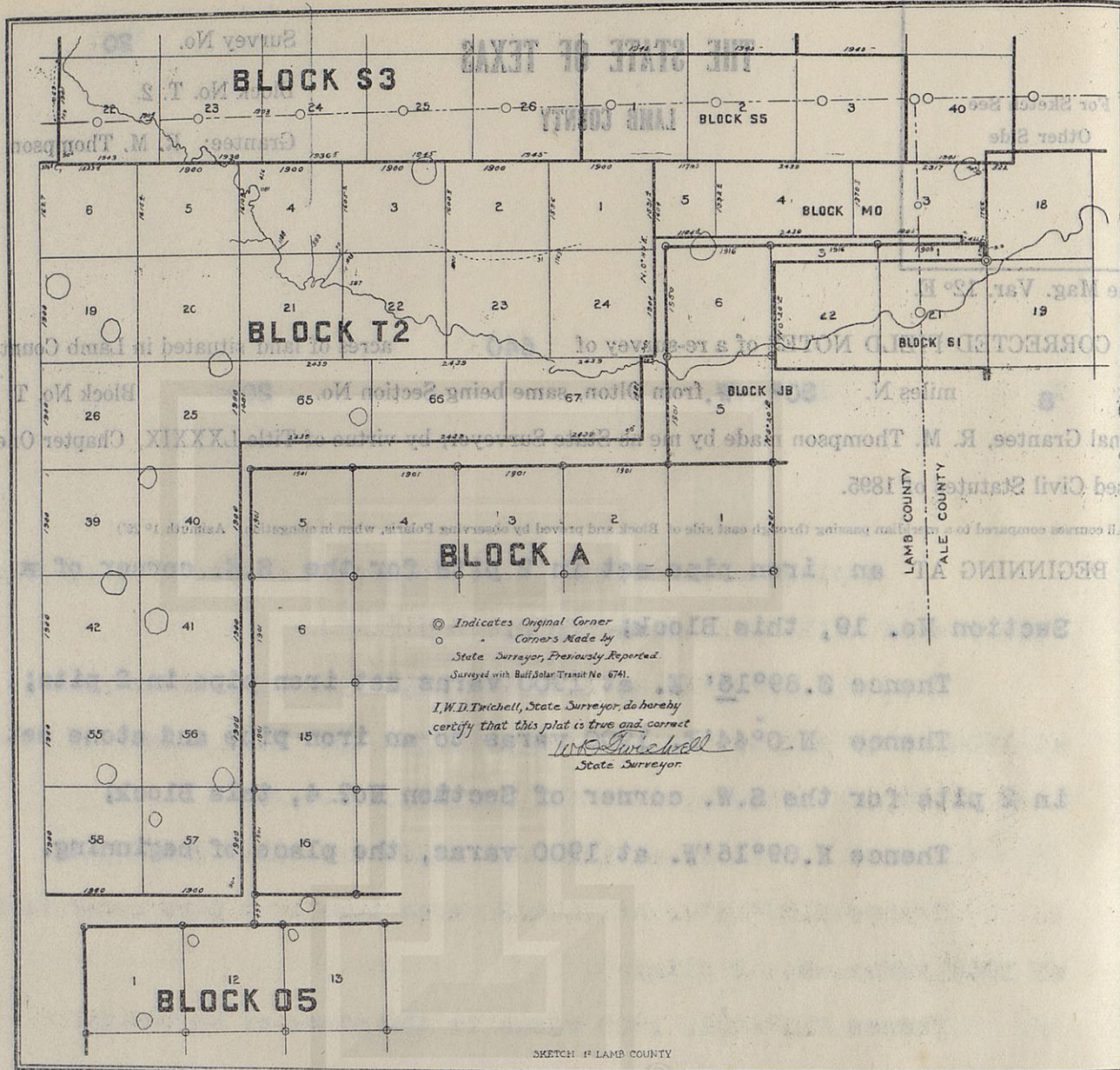
I, W. D. TWICHELL, State Surveyor, do hereby certify that the foregoing re-survey is correct and that it was made in the field, in accordance with law, and that the limits, boundaries and corners with the marks, natural and artificial, are truly and correctly described in the foregoing plat and field notes.

Re-surveyed 24<sup>th</sup> day of January, 1910.

APPROVED:

*W. D. Twichell*  
State Surveyor.

Commissioner General Land Office.



Re-surveyed 24<sup>th</sup> day of January, 1910.

*I. W. D. Twichell*  
State Surveyor

APPROVED:

W. J. Williams, Transmitter.

Bearings record angles from line.

CLAYTON WILLIAMS, Chain Carriers.  
VERNON CURT, Chain Carriers.

I, W. D. TWICHELL, State Surveyor, do hereby certify that the foregoing re-survey is correct and that was made in the field, in accordance with law, and that the limits, boundaries and corners with the marks, natural and artificial, are truly and correctly described in the foregoing plat and field notes.

For Sketch See  
Other Side

# THE STATE OF TEXAS

LAMB COUNTY

Survey No. 21

Block No. T. 2.

Grantee: R. M. Thompson.

True Mag. Var.  $12^{\circ}$  E.

CORRECTED FIELD NOTES of a re-survey of 640 acres of land situated in Lamb County, about 8 miles N.  $25^{\circ}$  W. from Olton, same being Section No. 21 Block No. T: 2. Original Grantee, R. M. Thompson made by me as State Surveyor, by virtue of Title LXXXIX, Chapter One, Revised Civil Statutes of 1895.

(All courses compared to a meridian passing through east side of Block and proved by observing Polaris, when in elongation. Azimuth  $1^{\circ} 25'$ )

BEGINNING AT an iron pipe set in 2 pits for the S.E. corner of Sec. No. 20, this Block, wind mill bears  $S.37^{\circ}11'W.$ ;

Thence  $S.89^{\circ}16'E.$  at 1900 varas set iron pipe in 2 pits from which 4 pits bear N. 29 steps and E. 16 steps, wind mill bears  $S.13^{\circ}45'E.$ ;

Thence  $N.0^{\circ}44'E.$  at 1313 varas cross creek, at 1900 vrs set iron pipe and dry cell battery in 2 pits for the S.W. cor. of section No. 3, this Block;

Thence  $N.89^{\circ}16'W.$  at 70 varas cross swag, at 583 varas cross draw, at 1188 varas cross creek, at 1900 varas set iron pipe and stone in 2 pits, wind mill bears  $S.40^{\circ}25'E.$ , another,  $S.26^{\circ}36'E.$ , another,  $S.27^{\circ}37'E.$ ;

Thence  $S.0^{\circ}44'W.$  1900 varas to the place of beginning.

Bearings record angles from line.

W. J. WILLIAMS, Transitman.

CLAYTON WILLIAMS, } Chain Carriers.  
VERNON CURL, }

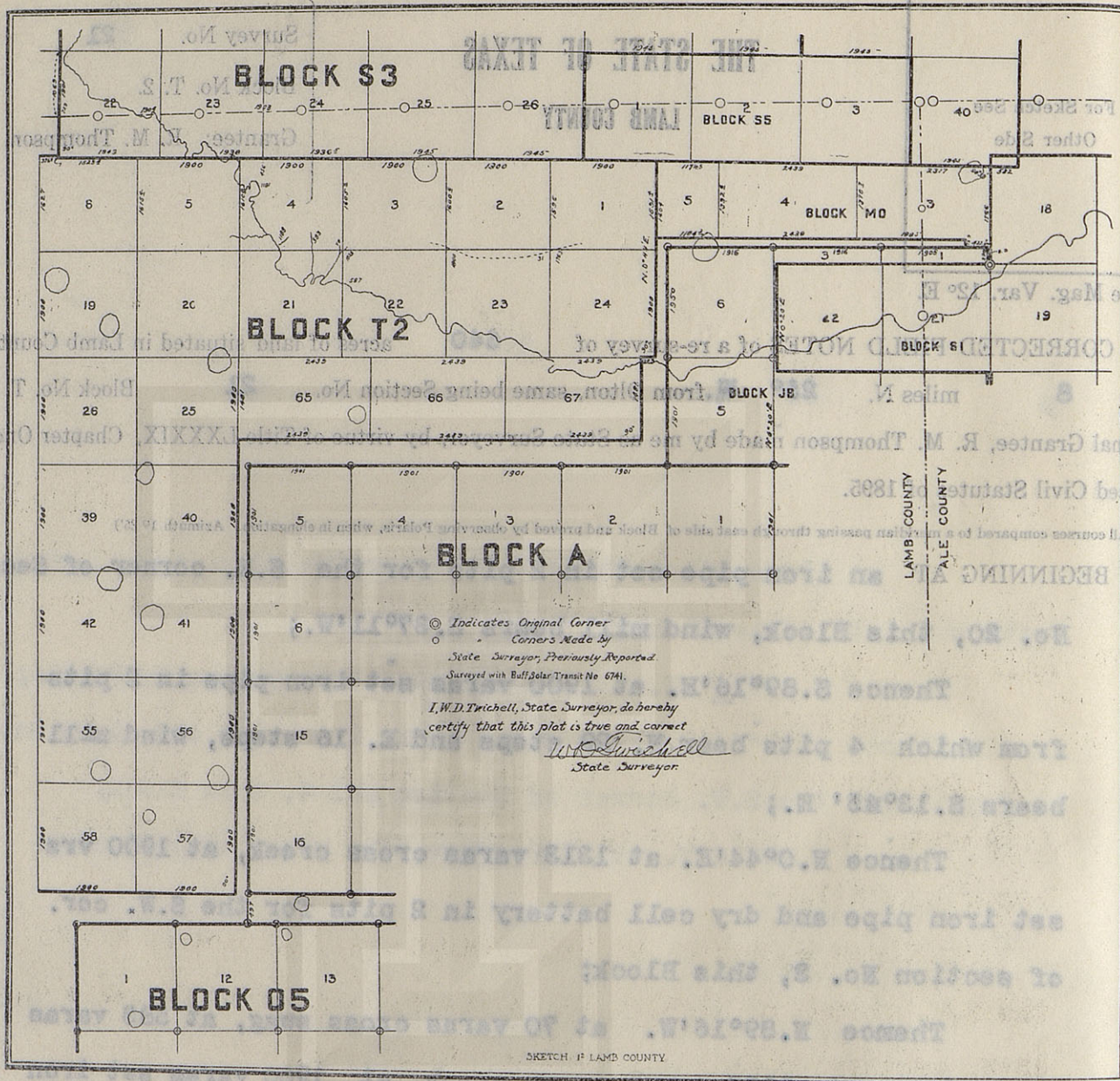
I, W. D. TWICHELL, State Surveyor, do hereby certify that the foregoing re-survey is correct and that it was made in the field, in accordance with law, and that the limits, boundaries and corners with the marks, natural and artificial, are truly and correctly described in the foregoing plat and field notes.

Re-surveyed 24<sup>th</sup> day of January, 1910.

APPROVED:

*W. D. Twichell*  
State Surveyor.

Commissioner General Land Office.



CLAYTON WILLIAMS } Chain Carriers  
VERNON CURL }

I, W. D. TWICHELL, State Surveyor, do hereby certify that the foregoing survey is correct and that was made in the field, in accordance with law, and that the limits, boundaries and corners with the natural and artificial, are truly and correctly described in the foregoing plat and field notes.

Re-surveyed 24th day of January, 1910.

State Surveyor

Commissioner General Land Office.

For Sketch See  
Other Side

# THE STATE OF TEXAS

LAMB COUNTY

Survey No.

22

Block No. T. 2.

Grantee: R. M. Thompson.

True Mag. Var. 12° E.

CORRECTED FIELD NOTES of a re-survey of

640

acres of land situated in Lamb County,

about

7

miles N.

18° W.

from Olton, same being Section No.

22

Block No. T. 2.

Original Grantee, R. M. Thompson made by me as State Surveyor, by virtue of Title LXXXIX, Chapter One, Revised Civil Statutes of 1895.

(All courses compared to a meridian passing through east side of Block and proved by observing Polaris, when in elongation. Azimuth 1° 25')

BEGINNING AT

an iron pipe set in 2 pits for the S.E. corner of Sec.

21, this Block, 4 pits bear N. 29 steps and E. 16 steps and wind mill bears N. 60° 31' E.;

Thence S. 89° 16' E. at 539 varas set iron pipe in 3 pits for the N.E. corner of section No. 65, at 950 varas set iron pipe, at 1900 varas set iron pipe in 2 pits for S.E. corner, wind mill bears S. 17° 3' W.;

Thence N. 0° 44' E. at 1900 varas set iron pipe in 2 pits for the S.W. corner of Section No. 2, this Block, windmill bears S. 58° 45' W, another, S. 5° 41' E., another, S. 11° 16' W.;

Thence N. 89° 16' W. at 1893 varas cross swag, at 1900 vrs set iron pipe and dry cell battery in 2 pits;

Thence S. 0° 44' W. at 537 varas cross creek, at 1900 varas

Bearings record angles from line.

the place of beginning.

W. J. WILLIAMS, Transitman.

CLAYTON WILLIAMS, } Chain Carriers.  
VERNON CURL, }

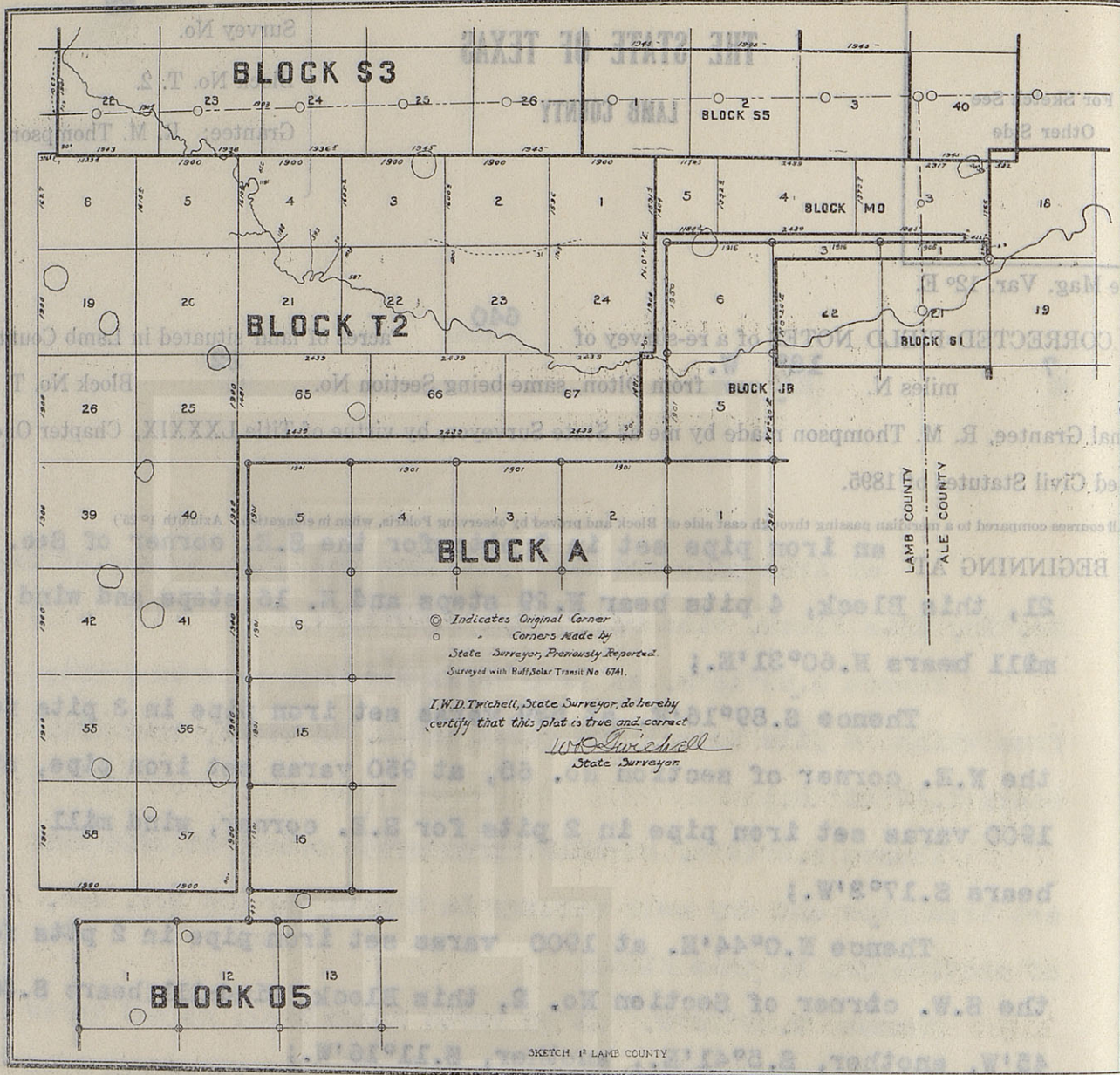
I, W. D. TWICHELL, State Surveyor, do hereby certify that the foregoing re-survey is correct and that it was made in the field, in accordance with law, and that the limits, boundaries and corners with the marks, natural and artificial, are truly and correctly described in the foregoing plat and field notes.

Re-surveyed 24<sup>th</sup> day of January, 1910.

APPROVED:

W. D. Twichell  
State Surveyor.

Commissioner General Land Office.



CLAYTON WILLIAMS, Chain Carrier.  
 VERNON CURT.

I, W. D. TRICHELL, State Surveyor, do hereby certify that the foregoing re-survey is correct and that was made in the field, in accordance with law, and that the limits, boundaries and corners with the natural and artificial, are truly and correctly described in the foregoing plat and field notes.

Re-surveyed day of 1910.

State Surveyor.

Commissioner General Land Office.

# THE STATE OF TEXAS

LAMB COUNTY

For Sketch See  
Other Side

Survey No. 23

Block No. T. 2.

Grantee: R. M. Thompson.

True Mag. Var. 12° E.

CORRECTED FIELD NOTES of a re-survey of 640 acres of land situated in Lamb County, about 7 miles N. 10° W. from Olton, same being Section No. 23 Block No. T. 2. Original Grantee, R. M. Thompson made by me as State Surveyor, by virtue of Title LXXXIX, Chapter One, Revised Civil Statutes of 1895.

(All courses compared to a meridian passing through east side of Block and proved by observing Polaris, when in elongation. Azimuth 1° 25')

BEGINNING AT an iron pipe set in 2 pits for the S.E. corner of section No. 22, this Blockwind mill bears N.41°3'E. another N.73°30'E.;

Thence S.89°16'E. at 1078 varas set iron pipe and pile of stones at N.W. foot of hill from which wind mill bears N.20°3'E. at 1900 varas set iron pipe in 2 pits; 61 varas North of creek;

Thence N.0°44'E. at 1869 varas cross road, at 1900 varas set iron pipe in 4 pits for the S.W. corner of Section No. 1, this block from which a wind mill bears N.12°53'W.;

Thence N.89°16'W. at 1800 varas cross McKenzie's trail, at 1900 varas set iron pipe in 2 pits, wind mill bears S.11°16'W.;

Thence S.0°44'W. 1900 varas to the place of beginning.

Bearings record angles from line.

W. J. WILLIAMS, Transitman.

CLAYTON WILLIAMS, } Chain Carriers.  
VERNON CURL,

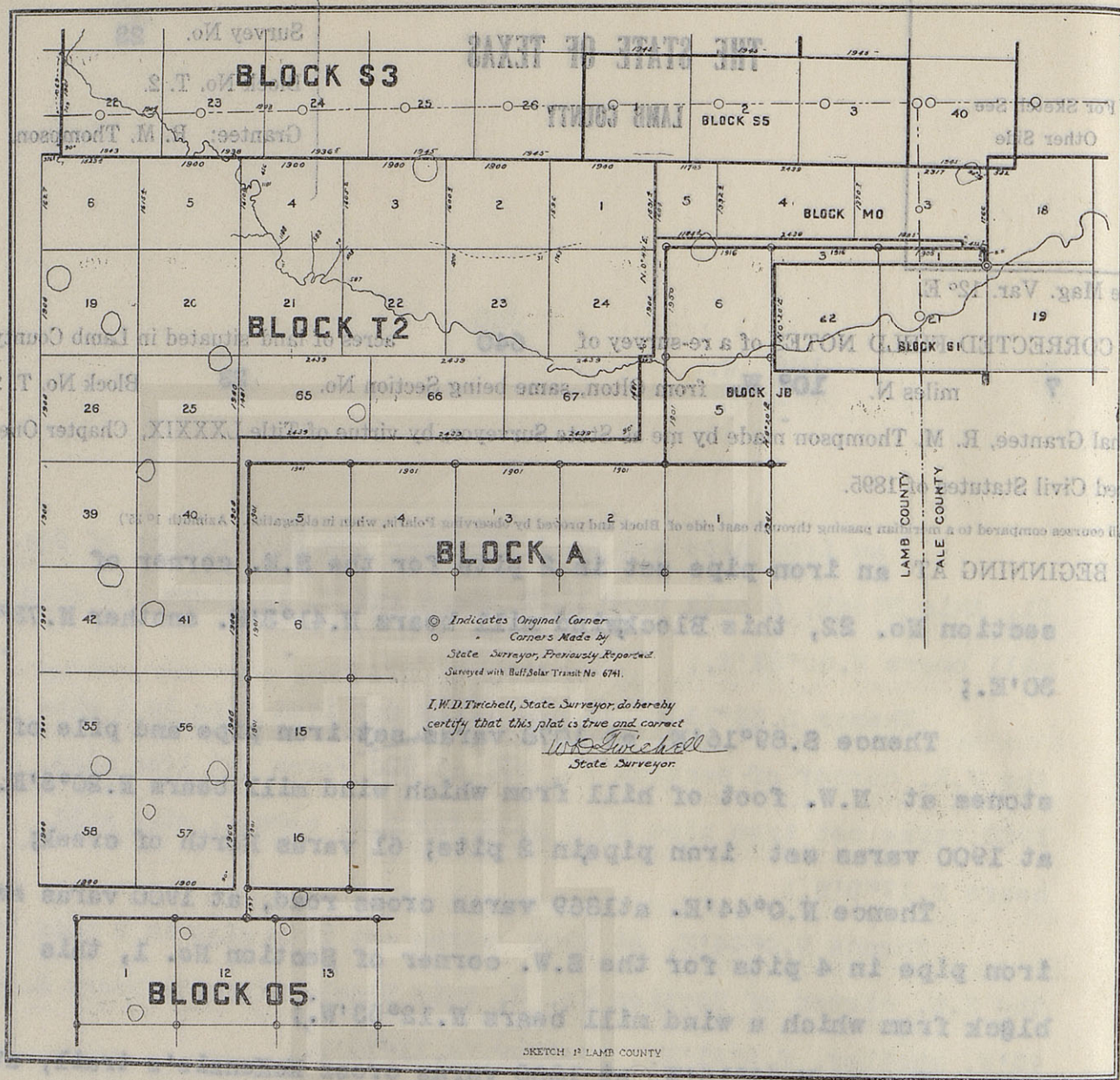
I, W. D. TWICHELL, State Surveyor, do hereby certify that the foregoing re-survey is correct and that it was made in the field, in accordance with law, and that the limits, boundaries and corners with the marks, natural and artificial, are truly and correctly described in the foregoing plat and field notes.

Re-surveyed 24 day of January, 1910.

APPROVED:

*W. D. Twichell*  
State Surveyor.

Commissioner General Land Office.



# THE STATE OF TEXAS

## LAMB COUNTY

For Sketch See  
Other Side

Survey No. 24

Block No. T. 2.

Grantee: R. M. Thompson.

True Mag. Var.  $12^{\circ}$  E.

CORRECTED FIELD NOTES of a re-survey of 640 acres of land situated in Lamb County, about 7 miles N.  $4^{\circ}$  W. from Olton, same being Section No. 24 Block No. T. 2. Original Grantee, R. M. Thompson made by me as State Surveyor, by virtue of Title LXXXIX, Chapter One, Revised Civil Statutes of 1895.

(All courses compared to a meridian passing through east side of Block and proved by observing Polaris, when in elongation. Azimuth  $1^{\circ} 25'$ )

BEGINNING AT an iron pipe set in 2 pits for the S.E. corner of Sec.

No. 23, this Block, creek is South 61 varas;

Thence S.  $89^{\circ} 16' E.$  at 1617 varas set iron pipe for the N.E. corner of Section No. 67, this Block; at 1900 varas set iron pipe;

Thence N.  $0^{\circ} 44' E.$  at 1900 varas set iron pipe in 4 pits, the S.E. corner of section No. 1, this Block;

Thence N.  $89^{\circ} 16' W.$  at 1763 varas cross Mc Kenzie's Trail, at 1900 varas set iron pipe in 4 pits;

Thence S.  $0^{\circ} 44' W.$  1900 varas to the place of beginning.

Bearings record angles from line.

W. J. WILLIAMS, Transitman.

CLAYTON WILLIAMS, } Chain Carriers.  
VERNON CURL, }

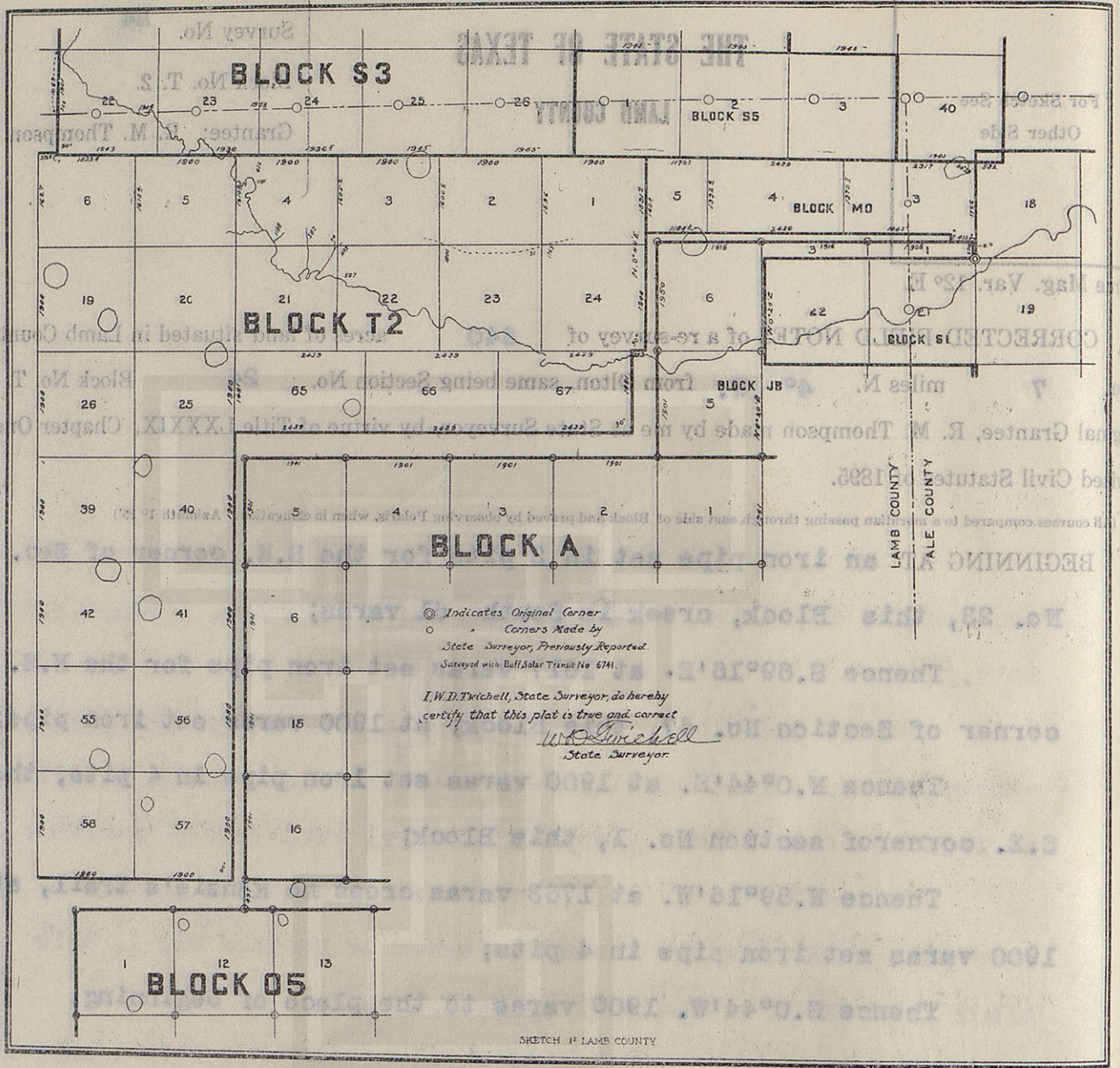
I, W. D. TWICHELL, State Surveyor, do hereby certify that the foregoing re-survey is correct and that it was made in the field, in accordance with law, and that the limits, boundaries and corners with the marks, natural and artificial, are truly and correctly described in the foregoing plat and field notes.

Re-surveyed 24<sup>th</sup> day of January, 1910.

APPROVED:

*W. D. Twichell*  
State Surveyor.

Commissioner General Land Office.



W. J. WILLIAMS, Transmitter.  
 Bearings record angles from line.  
 I. W. D. TRICHELL, State Surveyor, do hereby certify that the foregoing survey is correct and that  
 was made in the field, in accordance with law, and that the limits, boundaries and corners with the  
 marks, natural and artificial, are truly and correctly described in the foregoing plat and field notes.

Re-surveyed 24th day of January, 1910.

State Surveyor

Commissioner General Land Office

For Sketch See  
Other Side

# THE STATE OF TEXAS

LAMB COUNTY

Survey No. 25

Block No. T. 2.

Grantee: R. M. Thompson.

True Mag. Var. 12° E.

CORRECTED FIELD NOTES of a re-survey of 640 acres of land situated in Lamb County,

about 8 miles N. 35° W. from Olton, same being Section No. 25 Block No. T. 2.

Original Grantee, R. M. Thompson made by me as State Surveyor, by virtue of Title LXXXIX, Chapter One, Revised Civil Statutes of 1895.

(All courses compared to a meridian passing through east side of Block and proved by observing Polaris, when in elongation. Azimuth 1° 25')

BEGINNING AT an iron pipe set in 2 pits for the S.W. corner of Sec. No. 21, this Block, wind mill bears S.37°11'W.;

Thence N.89°16'W. at 1900 varas set iron pipe in 2 pits for the S.W. corner of Section No. 20, this Block, wind mill bears S.60°26'E.;

Thence S.0°44'W. at 1900 varas set iron pipe and 2 pits from which wind mill bears N.49°12'E.;

Thence S.89°16'E. at 1900 varas set iron pipe in 2 pits, wind mill bears N.26°31'W., another S. 59°8'30"E.;

Thence N.0°44'E. at 419 varas pass iron pipe and 2 pits set for the S.W. corner of Section No. 65, this Block; in all 1900 varas to the place of beginning.

Bearings record angles from line.

W. J. WILLIAMS, Transitman.

CLAYTON WILLIAMS, } Chain Carriers.  
VERNON CURL, }

I, W. D. TWICHELL, State Surveyor, do hereby certify that the foregoing re-survey is correct and that it was made in the field, in accordance with law, and that the limits, boundaries and corners with the marks, natural and artificial, are truly and correctly described in the foregoing plat and field notes.

Re-surveyed 26<sup>th</sup> day of January, 1910.

APPROVED:

W. D. Twichell  
State Surveyor.

Commissioner General Land Office.



# THE STATE OF TEXAS

LAMB COUNTY

For Sketch See  
Other Side

Survey No. 26  
Block No. T. 2.  
Grantee: R. M. Thompson.

True Mag. Var. 12° E.

CORRECTED FIELD NOTES of a re-survey of 640 acres of land situated in Lamb County,  
about 8 miles N. 40.W. from Olton, same being Section No. 26 Block No. T. 2.  
Original Grantee, R. M. Thompson made by me as State Surveyor, by virtue of Title LXXXIX, Chapter One,  
Revised Civil Statutes of 1895.

(All courses compared to a meridian passing through east side of Block and proved by observing Polaris, when in elongation. Azimuth 1° 25')

BEGINNING AT an iron pipe set in 2 pits for the N.W. corner of  
Section No. 25, this block;  
Thence N. 89° 16' W. at 1900 varas made 2 pits, from which the S.W. cor No. 19,  
an iron pipe under fence bears East 16 feet;  
Thence S. 0° 44' W. at 1900 varas made 2 pits;  
Thence S. 89° 16' E. at 4 feet cross iron pipe under fence;  
at 1900 varas set iron pipe in 2 pits for the S.W. corner of  
Section No. 25;  
Thence N. 0° 44' E. 1900 varas to the place of beginning.

Bearings record angles from line.

W. J. WILLIAMS, Transitman.

CLAYTON WILLIAMS, } Chain Carriers.  
VERNON CURL, }

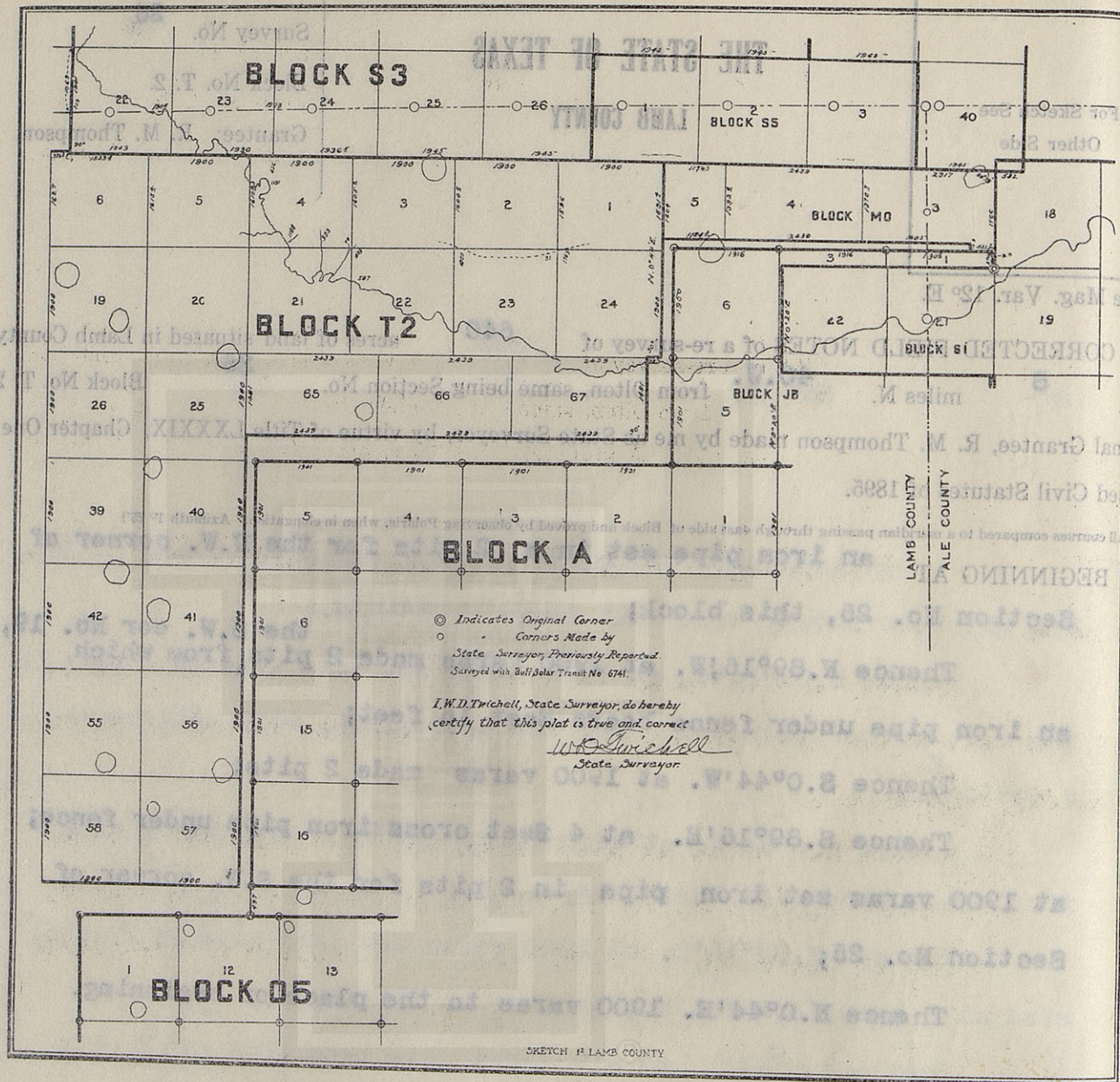
I, W. D. TWICHELL, State Surveyor, do hereby certify that the foregoing re-survey is correct and that it was made in the field, in accordance with law, and that the limits, boundaries and corners with the marks, natural and artificial, are truly and correctly described in the foregoing plat and field notes.

Re-surveyed 25 day of January, 1910.

APPROVED:

*W. D. Twichell*  
State Surveyor.

Commissioner General Land Office.



Re-surveyed 23 day of January, 1910.

W. J. Williams, Transitionman.

Bestings record angles from line.

I, W. D. TWICHELL, State Surveyor, do hereby certify that the foregoing re-survey is correct and that was made in the field, in accordance with law, and that the limits, boundaries and corners with the natural and artificial, are truly and correctly described in the foregoing plat and field notes.

CLAYTON WILLIAMS, Chain Carrier.

VERNON CURT, Chain Carrier.

State Surveyor.

# THE STATE OF TEXAS

LAMB COUNTY

For Sketch See  
Other Side

Survey No. 39

Block No. T. 2.

Grantee: R. M. Thompson.

True Mag. Var. 12° E.

CORRECTED FIELD NOTES of a re-survey of 640 acres of land situated in Lamb County,

about 7 miles N. 45° W. from Olton, same being Section No. 39 Block No. T. 2.

Original Grantee, R. M. Thompson made by me as State Surveyor, by virtue of Title LXXXIX, Chapter One, Revised Civil Statutes of 1895.

(All courses compared to a meridian passing through east side of Block and proved by observing Polaris, when in elongation. Azimuth 1° 25')

BEGINNING AT 2 pits made for the S.W. corner of Section No. 26, this block;

Thence S. 89° 16' E. at 4 feet pass iron pipe under fence,  
at 1900 varas set iron pipe in 2 pits for the S.W. corner of Section  
No. 25, this Block;

Thence S. 0° 44' W. at 1900 varas set iron pipe and 2 pits;

Thence N. 89° 16' W. at 1900 varas set iron pipe in 2 pits;

Thence N. 0° 44' E. at 1900 varas to the place of beginning.

Bearings record angles from line.

W. J. WILLIAMS, Transitman.

CLAYTON WILLIAMS, } Chain Carriers.  
VERNON CURL, }

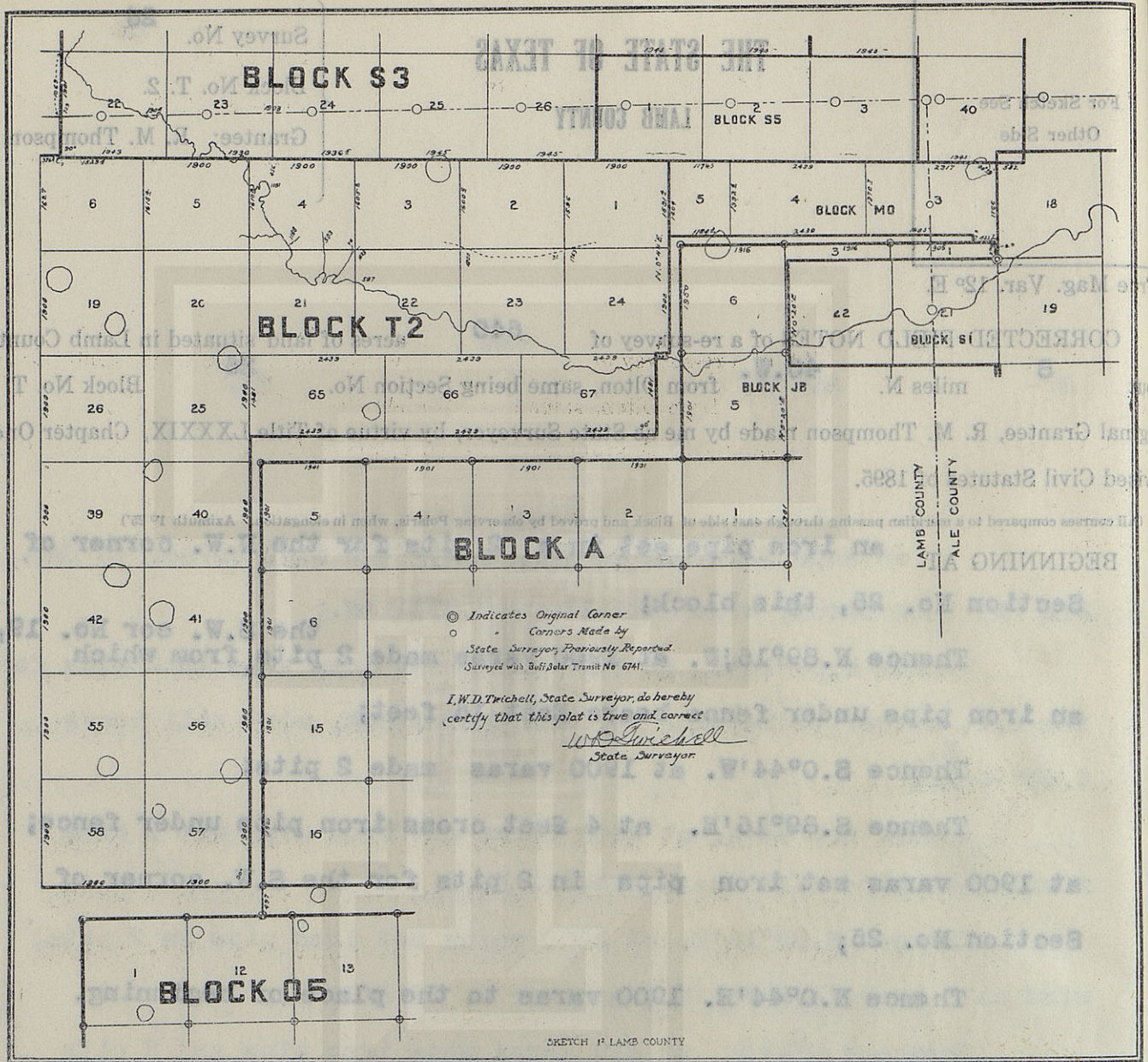
I, W. D. TWICHELL, State Surveyor, do hereby certify that the foregoing re-survey is correct and that it was made in the field, in accordance with law, and that the limits, boundaries and corners with the marks, natural and artificial, are truly and correctly described in the foregoing plat and field notes.

Re-surveyed 26 day of January, 1910.

APPROVED:

*W. D. Twichell*  
State Surveyor.

Commissioner General Land Office.



CLAYTON WILLIAMS } Chain Carriers.  
 VERNON CURT.

I, W. D. TWICHELL, State Surveyor, do hereby certify that the foregoing re-survey is correct and that was made in the field in accordance with law, and that the limits, boundaries and corners with the markers, natural and artificial, are truly and correctly described in the foregoing plat and field notes.

Re-surveyed 28 day of January, 1910.

State Surveyor.

Commissioner General Land Office.

Bearings record angles from line.  
 W. J. WILLIAMS, Transmittan.

APPROVED:

APPROVED

it was  
 marks

# THE STATE OF TEXAS

LAMB COUNTY

For Sketch See  
Other Side

Survey No. 39

Block No. T. 2.

Grantee: R. M. Thompson.

True Mag. Var. 12° E.

CORRECTED FIELD NOTES of a re-survey of 640 acres of land situated in Lamb County,  
about 7 miles N. 45° W. from Olton, same being Section No. 39 Block No. T. 2.  
Original Grantee, R. M. Thompson made by me as State Surveyor, by virtue of Title LXXXIX, Chapter One,  
Revised Civil Statutes of 1895.

(All courses compared to a meridian passing through east side of Block and proved by observing Polaris, when in elongation. Azimuth 1° 25')

BEGINNING AT 2 pits made for the S.W. corner of Section No. 26, this  
block;

Thence S. 89° 16' E. at 4 feet pass iron pipe under fence,  
at 1900 varas set iron pipe in 2 pits for the S.W. corner of Section  
No. 25, this Block;

Thence S. 0° 44' W. at 1900 varas set iron pipe and 2 pits;

Thence N. 89° 16' W. at 1900 varas set iron pipe in 2 pits;

Thence N. 0° 44' E. at 1900 varas to the place of beginning.

Bearings record angles from line.

W. J. WILLIAMS, Transitman.

CLAYTON WILLIAMS, } Chain Carriers.  
VERNON CURL, }

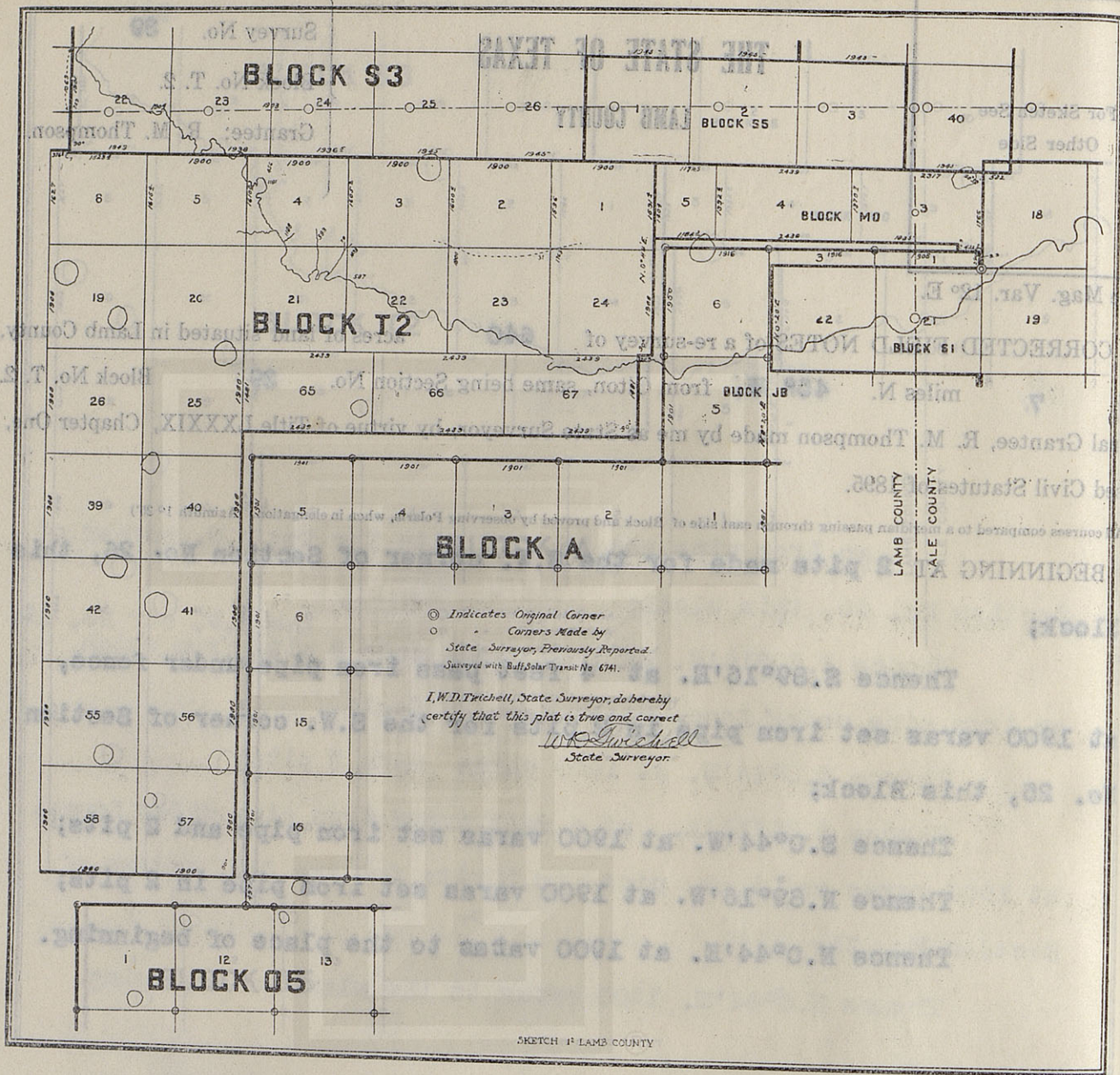
I, W. D. TWICHELL, State Surveyor, do hereby certify that the foregoing re-survey is correct and that  
it was made in the field, in accordance with law, and that the limits, boundaries and corners with the  
marks, natural and artificial, are truly and correctly described in the foregoing plat and field notes.

Re-surveyed 26 day of January, 1910.

APPROVED:

*W. D. Twichell*  
State Surveyor.

Commissioner General Land Office.



Bearings record angles from line.  
 W. J. Williams, Transman.

I, W. D. Trichell, State Surveyor, do hereby certify that the foregoing re-survey is correct and that  
 was made in the field, in accordance with law, and that the limits, boundaries and corners with the  
 are, natural and artificial, are truly and correctly described in the foregoing plat and field notes.

*W.D. Trichell*  
 State Surveyor.

Commissioner General Land Office.

# THE STATE OF TEXAS

LAMB COUNTY

Survey No. 40

Block No. T. 2.

Grantee: R. M. Thompson.

For Sketch See  
Other Side

True Mag. Var. 12° E.

CORRECTED FIELD NOTES of a re-survey of 640 acres of land situated in Lamb County,  
about 7 miles N. 40° W. from Olton, same being Section No. 40 Block No. T. 2.  
Original Grantee, R. M. Thompson made by me as State Surveyor, by virtue of Title LXXXIX, Chapter One,  
Revised Civil Statutes of 1895.

(All courses compared to a meridian passing through east side of Block and proved by observing Polaris, when in elongation. Azimuth 1° 25')

BEGINNING AT an iron pipe and 2 pits set for the S.W. corner of Sec.  
No. 25 and the N.E. corner of Section No. 39, this Block;

Thence S. 89° 16' E. at 1900 varas set iron pipe and 2 pits  
same being the S.E. corner of Section No. 25;

Thence S. 0° 44' W. at 1900 varas set iron pipe and 2 pits;

Thence N. 89° 16' W. at 1900 varas set iron pipe and 2 pits,  
the S.E. corner of Section No. 39;

Thence N. 0° 44' E. at 1900 varas the place of beginning.

Bearings record angles from line.

W. J. WILLIAMS, Transitman.

CLAYTON WILLIAMS, } Chain Carriers.  
VERNON CURL,

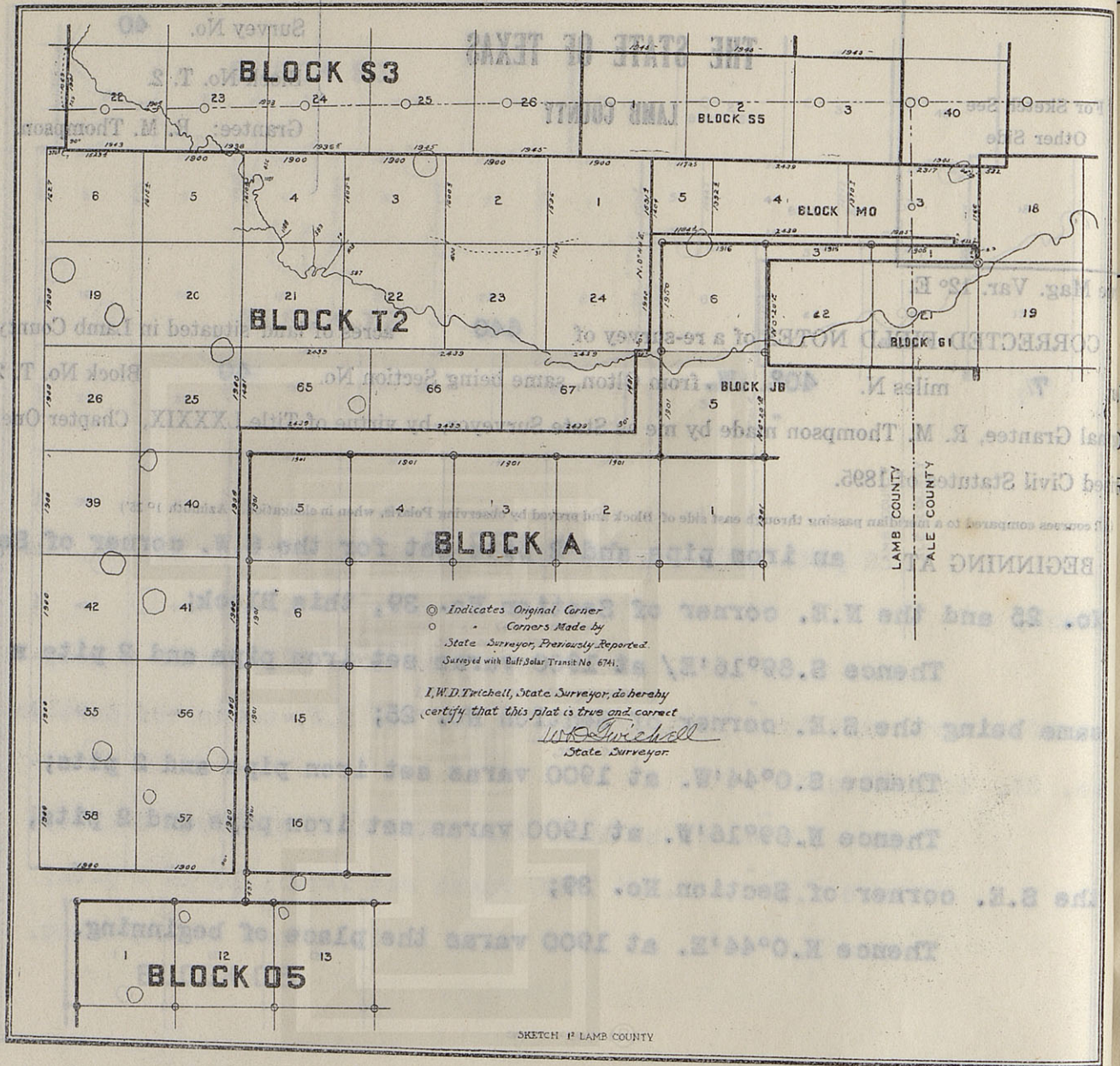
I, W. D. TWICHELL, State Surveyor, do hereby certify that the foregoing re-survey is correct and that  
it was made in the field, in accordance with law, and that the limits, boundaries and corners with the  
marks, natural and artificial, are truly and correctly described in the foregoing plat and field notes.

Re-surveyed 26 day of January, 1910.

APPROVED:

*W. D. Twichell*  
State Surveyor.

Commissioner General Land Office.



Bearings record angles from line.  
 W. J. Williams, Transmittan.

I. W. D. Trichell, State Surveyor, do hereby certify that the foregoing re-survey is correct and that  
 was made in the field, in accordance with law, and that the limits, boundaries and corners with the  
 marks, natural and artificial, are truly and correctly described in the foregoing plat and field notes.

CLAYTON WILLIAMS, Chain Carrier.  
 VERNON CURT, Chain Carrier.

Re-surveyed 28 day of January, 1910.

State Surveyor.

Commissioner General Land Office.

# THE STATE OF TEXAS

## LAMB COUNTY

For Sketch See  
Other Side

Survey No. 41

Block No. T. 2.

Grantee: R. M. Thompson.

True Mag. Var. 12° E.

CORRECTED FIELD NOTES of a re-survey of 640 acres of land situated in Lamb County,  
about 6 miles N. 45° W. from Olton, same being Section No. 41 Block No. T. 2.  
Original Grantee, R. M. Thompson made by me as State Surveyor, by virtue of Title LXXXIX, Chapter One,  
Revised Civil Statutes of 1895.

(All courses compared to a meridian passing through east side of Block and proved by observing Polaris, when in elongation. Azimuth 1° 25')

BEGINNING AT an iron pipe set in 2 pits for the S.E. corner of Sec.  
No. 40, this Block;

Thence N. 89° 16' W. at 1900 varas set iron pipe in 2 pits;

Thence S. 0° 44' W. at 1900 varas set iron pipe and 2 pits;

Thence S. 89° 16' E. at 1900 varas set iron pipe and 2 pits;

Thence N. 0° 44' E. 1900 varas to the place of beginning.

Bearings record angles from line.

W. J. WILLIAMS, Transitman.

CLAYTON WILLIAMS, } Chain Carriers.  
VERNON CURL, }

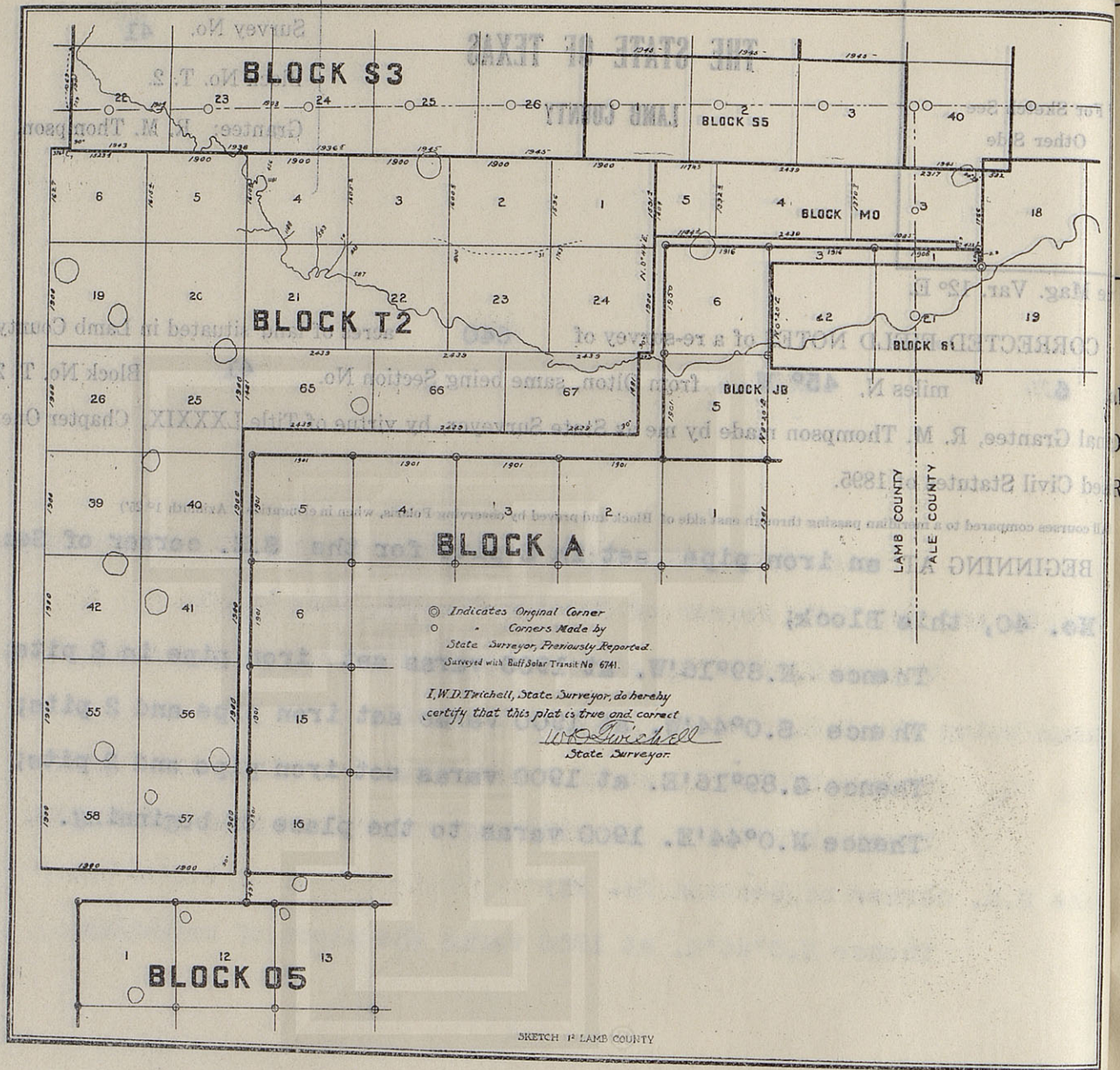
I, W. D. TWICHELL, State Surveyor, do hereby certify that the foregoing re-survey is correct and that it was made in the field, in accordance with law, and that the limits, boundaries and corners with the marks, natural and artificial, are truly and correctly described in the foregoing plat and field notes.

Re-surveyed 26<sup>th</sup> day of January, 1910.

APPROVED:

*W. D. Twichell*  
State Surveyor.

Commissioner General Land Office.



CLAYTON WILLIAMS, Chain Carriers.  
 VERNON CURT, Chain Carriers.

I, W. D. TWICHELL, State Surveyor, do hereby certify that the foregoing survey is correct and that was made in the field, in accordance with law, and that the limits, boundaries and corners with the natural and artificial, are truly and correctly described in the foregoing plat and field notes.

Resurveyed 20th day of JANUARY, 1910.  
 I. W. D. Twichell  
 State Surveyor.

Commissioner General Land Office.

W. J. WILLIAMS, Transmitter.  
 Bearings record angles from line.

# THE STATE OF TEXAS

LAMB COUNTY

Survey No.

42

Block No. T. 2.

Grantee: R. M. Thompson.

For Sketch See  
Other Side

True Mag. Var. 12° E.

CORRECTED FIELD NOTES of a re-survey of 640 acres of land situated in Lamb County,  
about 6 miles N. 52° W. from Olton, same being Section No. 42 Block No. T. 2.  
Original Grantee, R. M. Thompson made by me as State Surveyor, by virtue of Title LXXXIX, Chapter One,  
Revised Civil Statutes of 1895.

(All courses compared to a meridian passing through east side of Block and proved by observing Polaris, when in elongation. Azimuth 1° 25')

BEGINNING AT an iron pipe set in 2 pits for the N.W. corner of  
Section No. 41, this Block and the S.E. corner of Section No. 39;  
Thence N. 89° 16' W. at 1900 set an iron pipe in 2 pits, the  
S.W. corner of Section No. 39, this Block;  
Thence S. 0° 44' W. at 1900 varas set iron pipe in 2 pits;  
Thence S. 89° 16' E. at 1900 varas set iron pipe and 2 pits;  
Thence N. 0° 44' E. 1900 varas to the place of beginning.

Bearings record angles from line.

W. J. WILLIAMS, Transitman.

CLAYTON WILLIAMS, } Chain Carriers.  
VERNON CURL, }

I, W. D. TWICHELL, State Surveyor, do hereby certify that the foregoing re-survey is correct and that it was made in the field, in accordance with law, and that the limits, boundaries and corners with the marks, natural and artificial, are truly and correctly described in the foregoing plat and field notes.

Re-surveyed 26 day of January, 1910.

APPROVED:

*W. D. Twichell*  
State Surveyor.

Commissioner General Land Office.



# THE STATE OF TEXAS

LAMB COUNTY

For Sketch See  
Other Side

Survey No. 55

Block No. T. 2.

Grantee: R. M. Thompson.

True Mag. Var.  $12^{\circ}$  E.

CORRECTED FIELD NOTES of a re-survey of 640 acres of land situated in Lamb County,  
about 6 miles N.  $58^{\circ}$  W. from Olton, same being Section No. 55 Block No. T. 2.  
Original Grantee, R. M. Thompson made by me as State Surveyor, by virtue of Title LXXXIX, Chapter One,  
Revised Civil Statutes of 1895.

(All courses compared to a meridian passing through east side of Block and proved by observing Polaris, when in elongation. Azimuth  $1^{\circ} 25'$ )

BEGINNING AT an iron pipe and 2 pits set for the S.W. corner of  
Section No. 42, this Block;

Thence S.  $89^{\circ} 16' E.$  at 1900 varas set iron pipe and 2 pits  
for the S.E. corner of Section No. 42;

Thence S.  $0^{\circ} 44' W.$  at 1900 varas set iron pipe and 2 pits;

Thence N.  $89^{\circ} 16' W.$  at 1900 varas set iron pipe and 2 pits;

Thence N.  $0^{\circ} 44' E.$  1900 varas to the place of beginning.

Bearings record angles from line.

W. J. WILLIAMS, Transitman.

CLAYTON WILLIAMS, } Chain Carriers.  
VERNON CURL, }

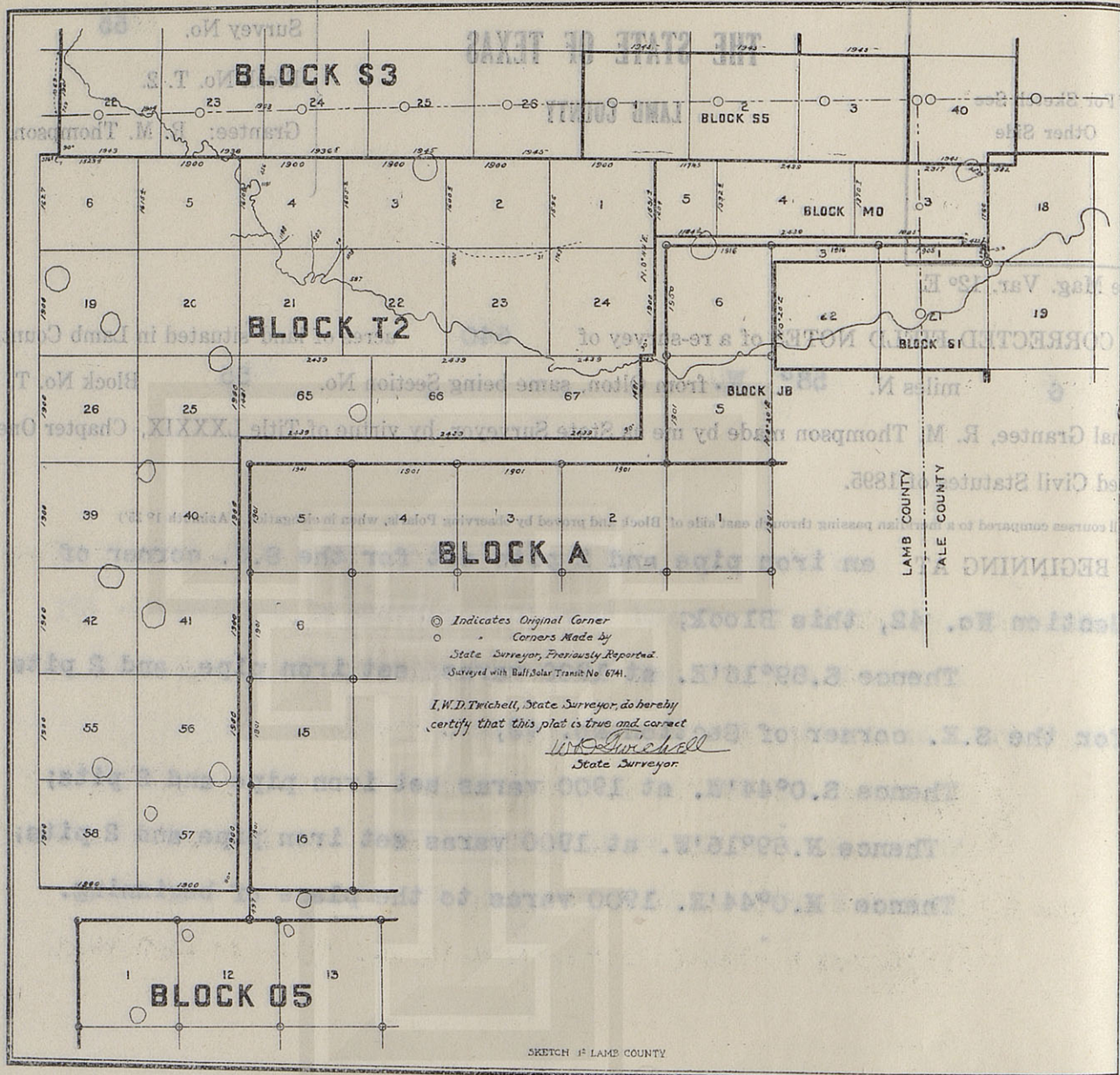
I, W. D. TWICHELL, State Surveyor, do hereby certify that the foregoing re-survey is correct and that  
it was made in the field, in accordance with law, and that the limits, boundaries and corners with the  
marks, natural and artificial, are truly and correctly described in the foregoing plat and field notes.

Re-surveyed 27<sup>th</sup> day of July, 1910.

APPROVED:

*W. D. Twichell*  
State Surveyor.

Commissioner General Land Office.



CLAYTON WILLIAMS, Chain Carriers.  
 VERNON CURT.

I, W. D. TWICHELL, State Surveyor, do hereby certify that the foregoing re-survey is correct and that was made in the field, in accordance with law, and that the limits, boundaries and corners with the marks, natural and artificial, are truly and correctly described in the foregoing plat and field notes.

*I.W.D. Twichell*  
 State Surveyor.

Commissioner General Land Office.

W. J. WILLIAMS, Transferee.  
 Bearings record angles from line.

it was  
 marks,

APPRO

True M  
 CO  
 about  
 Original  
 Revised  
 (All cor  
 BL

# THE STATE OF TEXAS

LAMB COUNTY

For Sketch See  
Other Side

Survey No. 56

Block No. T. 2.

Grantee: R. M. Thompson.

True Mag. Var. 12° E.

CORRECTED FIELD NOTES of a re-survey of 640 acres of land situated in Lamb County,  
about 5 miles N. 53° W from Olton, same being Section No. 56 Block No. T. 2.  
Original Grantee, R. M. Thompson made by me as State Surveyor, by virtue of Title LXXXIX, Chapter One,  
Revised Civil Statutes of 1895.

(All courses compared to a meridian passing through east side of Block and proved by observing Polaris, when in elongation. Azimuth 1° 25')

BEGINNING AT an iron pipe set in 2 pits for the N.E. corner of Sec.  
55, this Block;

Thence S. 89° 16' E. at 1900 varas set iron pipe in 2 pits for  
the S.E. corner of Section No. 41, this Block;

Thence S. 0° 44' W. at 1900 varas set iron pipe in 2 pits;

Thence N. 89° 16' W. at 1900 varas set iron pipe in 2 pits,  
the S.E. corner of Section No. 55;

Thence N. 0° 44' E. 1900 varas to the place of beginning.

Bearings record angles from line.

W. J. WILLIAMS, Transitman.

CLAYTON WILLIAMS, } Chain Carriers.  
VERNON CURL, }

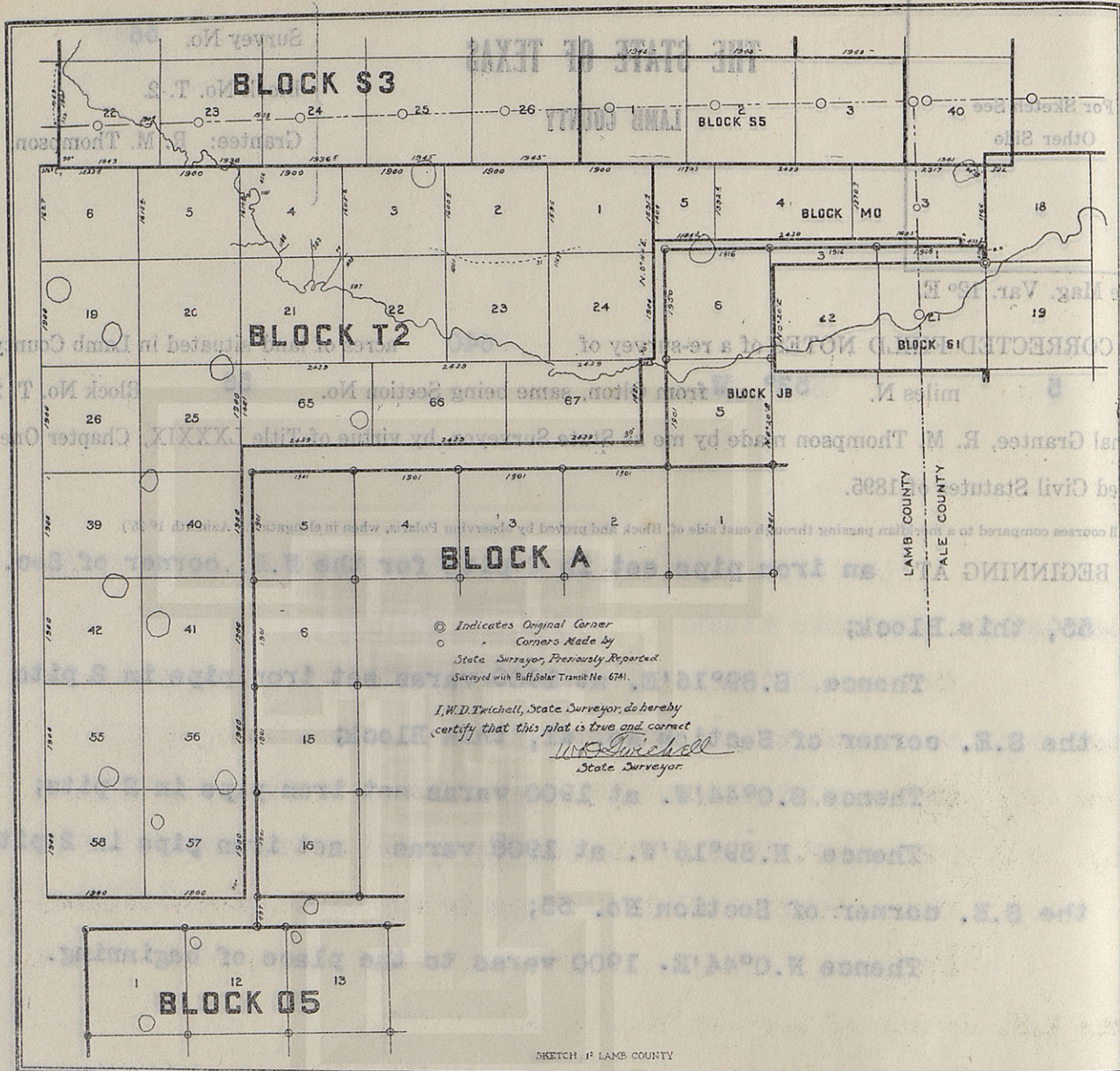
I, W. D. TWICHELL, State Surveyor, do hereby certify that the foregoing re-survey is correct and that  
it was made in the field, in accordance with law, and that the limits, boundaries and corners with the  
marks, natural and artificial, are truly and correctly described in the foregoing plat and field notes.

Re-surveyed 27<sup>th</sup> day of January, 1910.

APPROVED:

*W. D. Twichell*  
State Surveyor.

Commissioner General Land Office.



Bearings record angles from line.

W. J. Williams, Transman.

CLAYTON WILLIAMS, Chain Carrier.

VERNON CURT, Chain Carrier.

I, W. D. TWICHELL, State Surveyor, do hereby certify that the foregoing survey is correct and that was made in the field, in accordance with law, and that the limits, boundaries and corners with the marks, natural and artificial, are truly and correctly described in the foregoing plat and field notes.

Re-surveyed 27th day of January, 1910.

*I. W. D. Twichell*  
State Surveyor.

APPROVED:

Commissioner General Land Office.

# THE STATE OF TEXAS

## LAMB COUNTY

For Sketch See  
Other Side

Survey No. 57

Block No. T. 2.

Grantee: R. M. Thompson.

True Mag. Var. 12° E.

CORRECTED FIELD NOTES of a re-survey of 640 acres of land situated in Lamb County, about 5 miles N. 68° W from Olton, same being Section No. 57, Block No. T. 2. Original Grantee, R. M. Thompson made by me as State Surveyor, by virtue of Title LXXXIX, Chapter One, Revised Civil Statutes of 1895.

(All courses compared to a meridian passing through east side of Block and proved by observing Polaris, when in elongation. Azimuth 1° 25')

BEGINNING AT an iron pipe set in 2 pits for the S.E. corner of Section No 56, this Block;

Thence S.0°44'W. at 1900 varas set iron pipe in 2 pits from which a stone 12x7x5 inches marked + set by State Surveyor W.D. Twichell for the S.W. corner of Section No? 16, Block A, L. & S. V. R.R. Co., bears S.76°48'E. 281.1 varas, true course;

Thence N.89°16'W. at 1900 varas set iron pipe and 2 pits;

Thence N.0°44'E. at 1900 varas set iron pipe and 2 pits, the S.E. corner of section No. 55, this block;

Thence S.89°16'E. 1900 varas to the place of beginning.

Bearings record angles from line.

true course.

W. J. WILLIAMS, Transitman.

CLAYTON WILLIAMS, } Chain Carriers.  
VERNON CURL, }

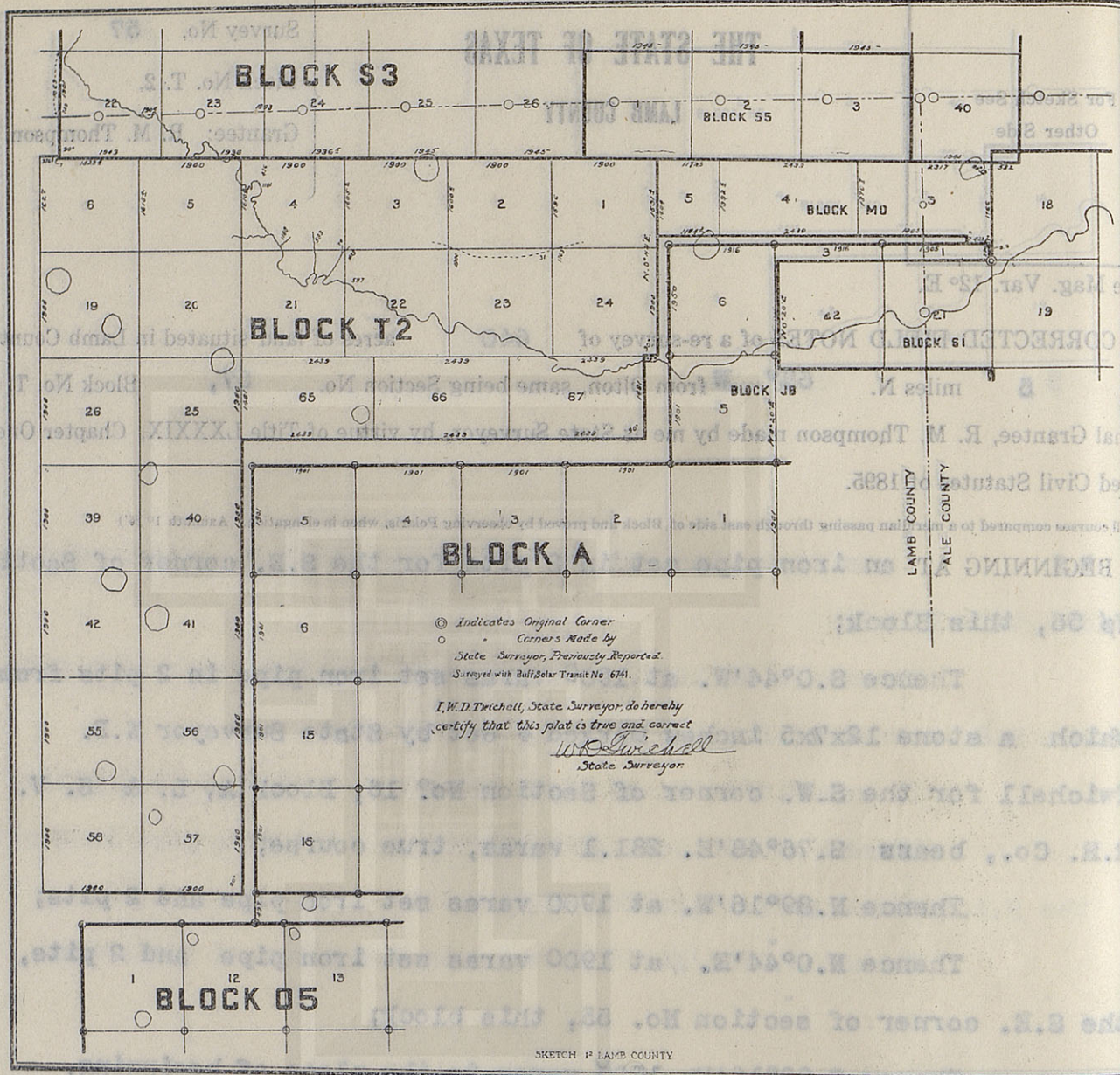
I, W. D. TWICHELL, State Surveyor, do hereby certify that the foregoing re-survey is correct and that it was made in the field, in accordance with law, and that the limits, boundaries and corners with the marks, natural and artificial, are truly and correctly described in the foregoing plat and field notes.

Re-surveyed 27<sup>th</sup> day of January, 1910.

APPROVED:

*W. D. Twichell*  
State Surveyor.

Commissioner General Land Office.



CLAYTON WILLIAMS, Chain Carriers.  
 VERNON CURTIS

I, W. D. TWICHELL, State Surveyor, do hereby certify that the foregoing re-survey is correct and that was made in the field, in accordance with law, and that the limits, boundaries and corners with the marks, natural and artificial, are truly and correctly described in the foregoing plat and field notes.

Re-surveyed 27th day of January, 1910.

W.D. Twichell  
 State Surveyor

Commissioner General Land Office.

# THE STATE OF TEXAS

LAMB COUNTY

Survey No. 58

Block No. T. 2.

Grantee: R. M. Thompson.

For Sketch See  
Other Side

True Mag. Var.  $12^{\circ}$  E.

CORRECTED FIELD NOTES of a re-survey of 640 acres of land situated in Lamb County, about 6 miles N.  $67^{\circ}$  W. from Olton, same being Section No. 58, Block No. T. 2. Original Grantee, R. M. Thompson made by me as State Surveyor, by virtue of Title LXXXIX, Chapter One, Revised Civil Statutes of 1895.

(All courses compared to a meridian passing through east side of Block and proved by observing Polaris, when in elongation. Azimuth  $1^{\circ} 25'$ )

BEGINNING AT an iron pipe set in 2 pits for the N.W. corner of Sec. No. 57, this Block;

Thence N.  $89^{\circ} 16' W.$  at 1900 varas set iron pipe in 2 pits for the S.W. corner of Section No. 55, this block;

Thence S.  $0^{\circ} 44' W.$  at 1900 varas set iron pipe and 2 pits;

thence Thence S.  $89^{\circ} 16' E.$  at 1900 varas set iron pipe and 2 pits;

Thence N.  $0^{\circ} 44' E.$  1900 varas to the place of beginning.

Bearings record angles from line.

W. J. WILLIAMS, Transitman.

CLAYTON WILLIAMS, } Chain Carriers.  
VERNON CURL, }

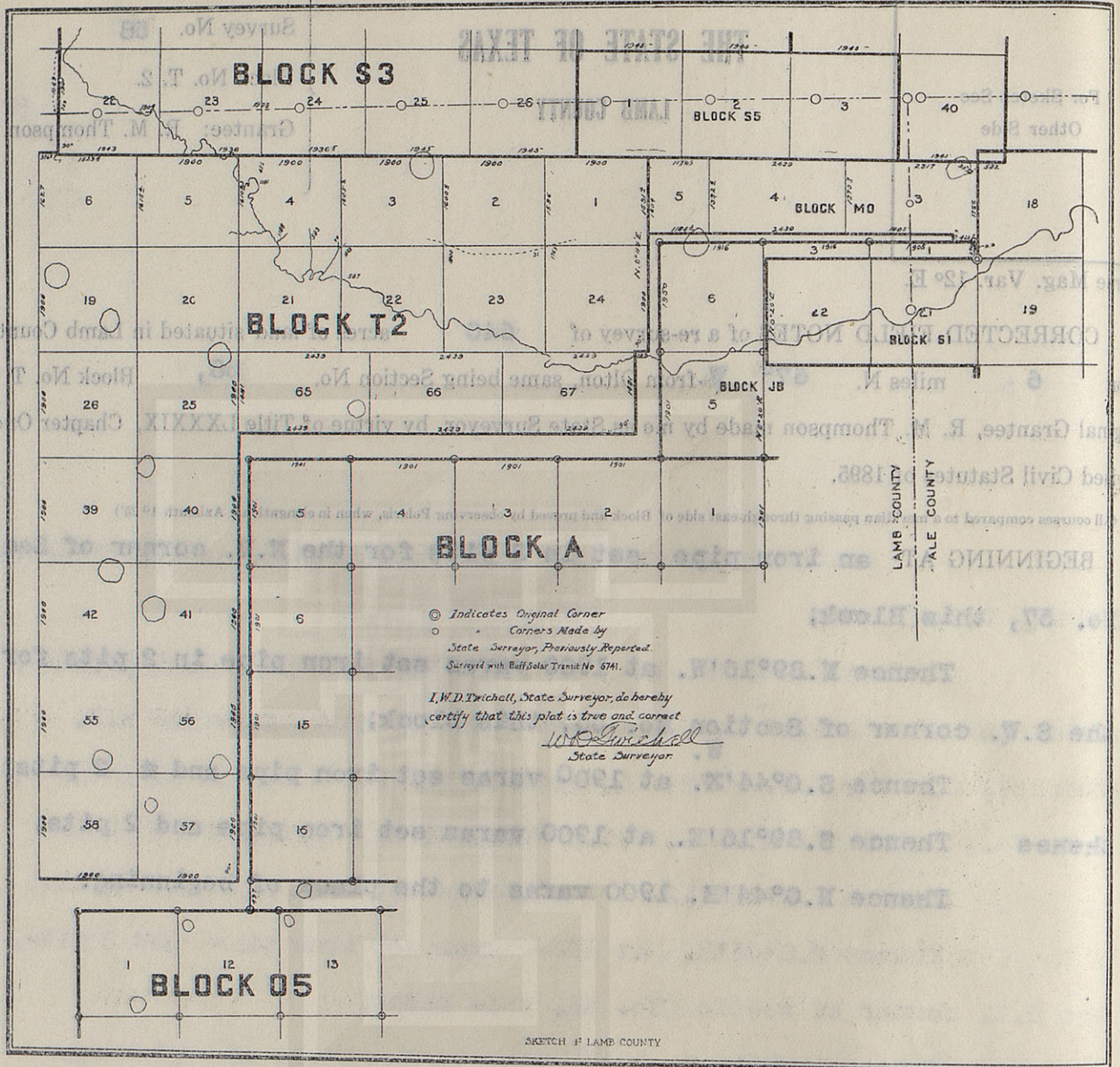
I, W. D. TWICHELL, State Surveyor, do hereby certify that the foregoing re-survey is correct and that it was made in the field, in accordance with law, and that the limits, boundaries and corners with the marks, natural and artificial, are truly and correctly described in the foregoing plat and field notes.

Re-surveyed 27<sup>th</sup> day of January, 1910.

APPROVED:

*W. D. Twichell*  
State Surveyor.

Commissioner General Land Office.



CLAYTON WILLIAMS, Chain Carriers.  
 VERNON CURT, Chain Carriers.

I, W.D. TWICHELL, State Surveyor, do hereby certify that the foregoing re-survey is correct and that was made in the field in accordance with law, and that the limits, boundaries and corners with the marks, natural and artificial, are truly and correctly described in the foregoing plat and field notes.

W. J. WILLIAMS, Transman.  
 Bearings record angles from line.

Re-surveyed 27th day of January, 1910.

State Surveyor.

Commissioner General Land Office.

THE STATE OF TEXAS

LAMB COUNTY

For Sketch See  
Other Side

Survey No. 65

Block No. T. 2.

Grantee: R. M. Thompson.

True Mag. Var. 12° E.

CORRECTED FIELD NOTES of a re-survey of 640 acres of land situated in Lamb County,  
about 7 miles N. 28° W. from Olton, same being Section No. 65, Block No. T. 2.  
Original Grantee, R. M. Thompson made by me as State Surveyor, by virtue of Title LXXXIX, Chapter One,  
Revised Civil Statutes of 1895.

(All courses compared to a meridian passing through east side of Block and proved by observing Polaris, when in elongation. Azimuth 1° 25')

BEGINNING AT an iron pipe and 2 pits set for the N.E. corner of Sec.  
No. 25, this Block;

Thence S. 89° 16' E. at 1900 varas pass iron pipe and 2 pits  
set for the S.E. corner of Section No. 21, at 2439 varas set iron pipe  
and 3 pits in the South line of Section No. 22;

Thence S. 0° 44' W. at 1481 varas set iron pipe and 2 pits;

Thence N. 89° 16' W. at 2439 varas set iron pipe and 2 pits  
in the East line of Section No. 25;

Thence N. 0° 44' E. 1481 varas to the place of beginning.

Bearings record angles from line.

W. J. WILLIAMS, Transitman.

CLAYTON WILLIAMS, } Chain Carriers.  
VERNON CURL, }

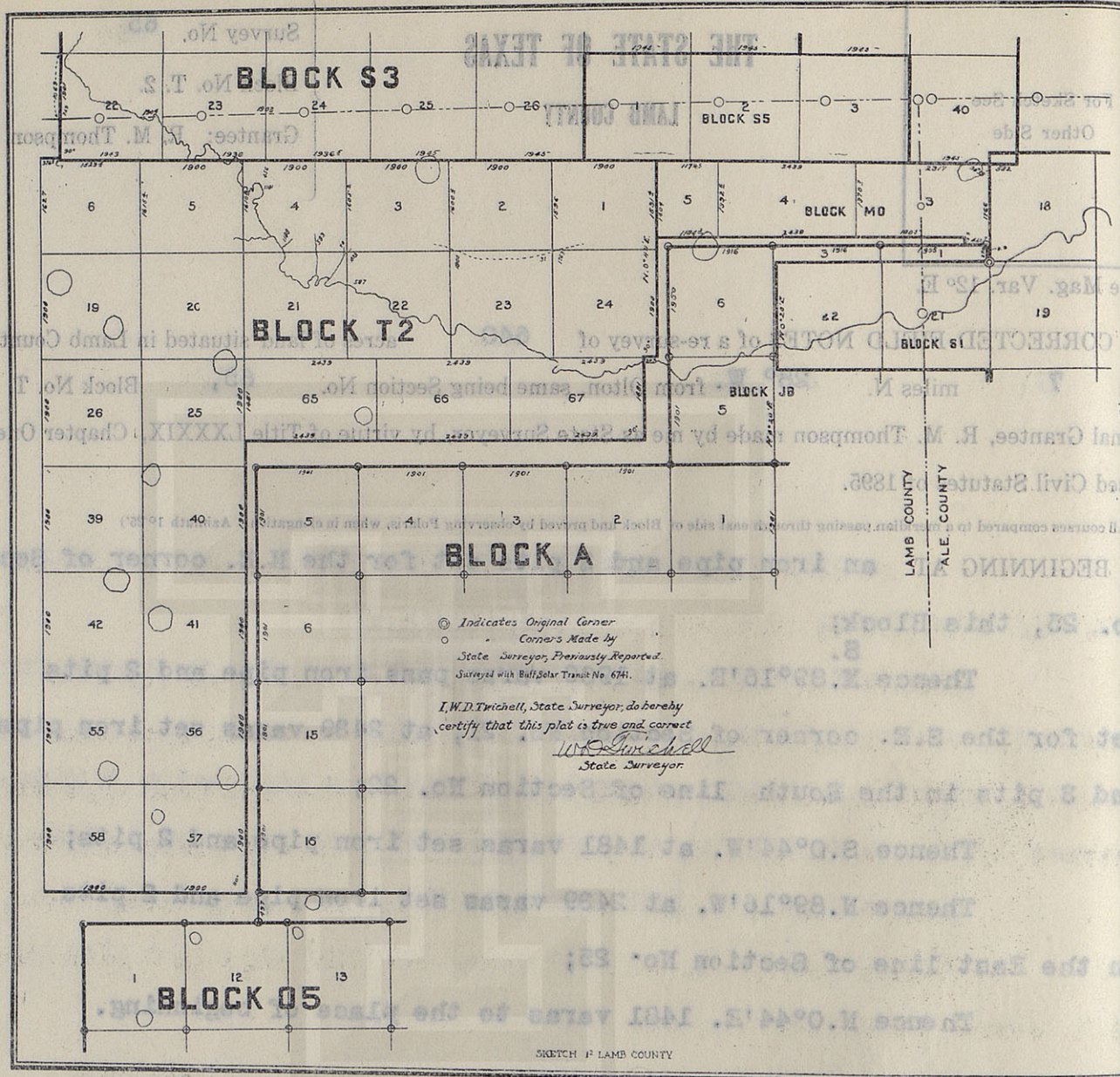
I, W. D. TWICHELL, State Surveyor, do hereby certify that the foregoing re-survey is correct and that  
it was made in the field, in accordance with law, and that the limits, boundaries and corners with the  
marks, natural and artificial, are truly and correctly described in the foregoing plat and field notes.

Re-surveyed 25<sup>th</sup> day of January, 1910.

APPROVED:

*W. D. Twichell*  
State Surveyor.

Commissioner General Land Office.



For Sketch See  
Other Side

# THE STATE OF TEXAS

LAMB COUNTY

Survey No. 66

Block No. T. 2.

Grantee: R. M. Thompson.

True Mag. Var. 12° E.

CORRECTED FIELD NOTES of a re-survey of 640 acres of land situated in Lamb County, about 6 miles N. 18° W. from Olton, same being Section No. 66, Block No. T. 2. Original Grantee, R. M. Thompson made by me as State Surveyor, by virtue of Title LXXXIX, Chapter One, Revised Civil Statutes of 1895.

(All courses compared to a meridian passing through east side of Block and proved by observing Polaris, when in elongation. Azimuth 1° 25')

BEGINNING AT an iron pipe and 3 pits set for the N.E. corner of Sec. No. 65, this block, wind mill bears S. 4° 32' E.;

Thence S. 89° 16' E. at 1361 varas pass an iron pipe set in 2 pits for the S.E. corner of Section No. 22, from which wind mill bears S. 17° 3' W., another, N. 41° 8' E.; at 2439 varas set iron pipe and pile of stones at N.W. side of foot of hill, wind mill bears N. 20° 3' E.;

Thence S. 0° 44' W. at 1481 varas stone in 4 pits under fence;

Thence N. 89° 16' W. at 2439 varas set iron pipe in 2 pits, the S.E. corner of Section No. 65;

Thence N. 0° 44' E. at 1481 varas the place of beginning.

Bearings record angles from line.

W. J. WILLIAMS, Transitman.

CLAYTON WILLIAMS, } Chain Carriers.  
VERNON CURL, }

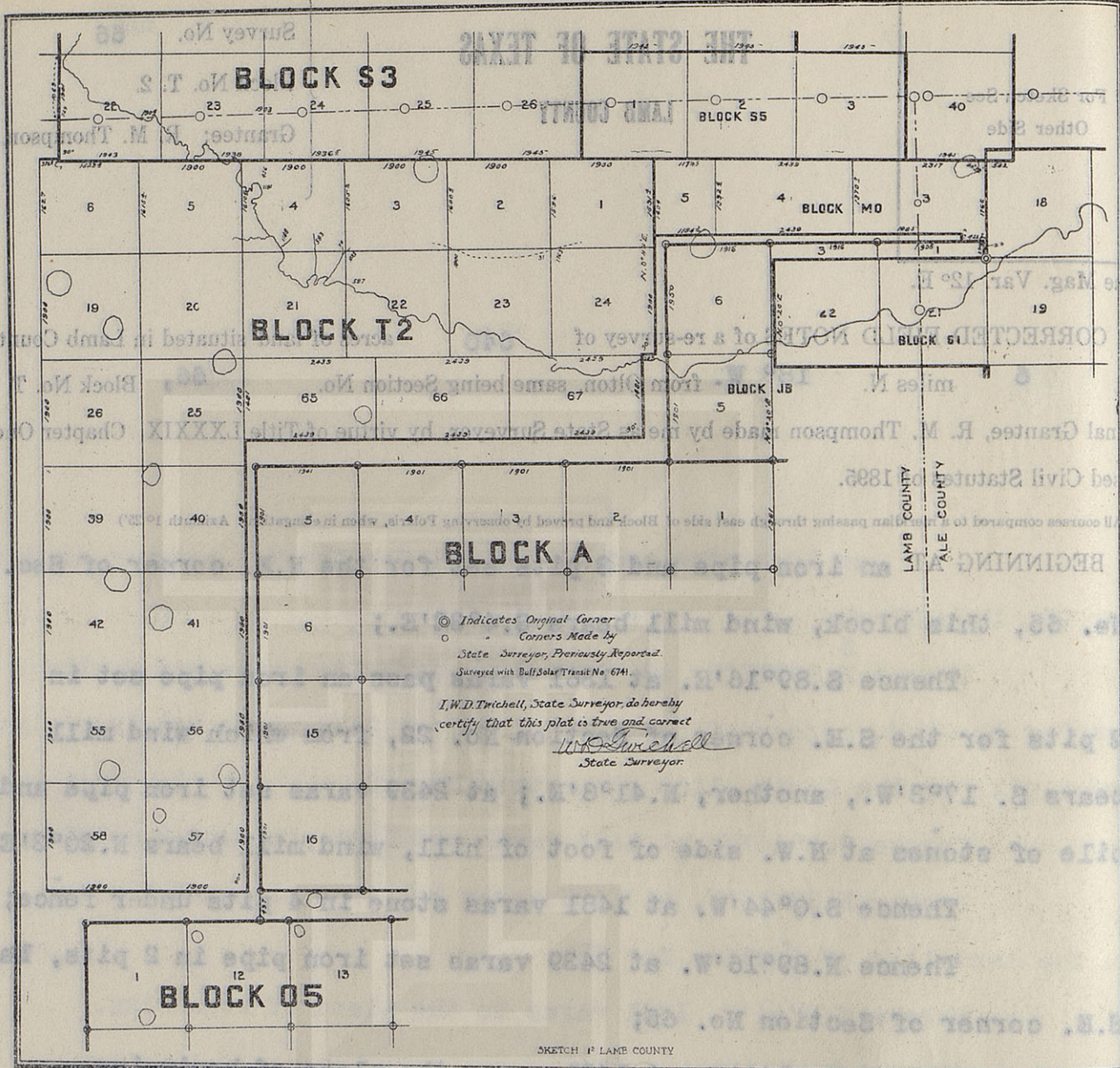
I, W. D. TWICHELL, State Surveyor, do hereby certify that the foregoing re-survey is correct and that it was made in the field, in accordance with law, and that the limits, boundaries and corners with the marks, natural and artificial, are truly and correctly described in the foregoing plat and field notes.

Re-surveyed 25<sup>th</sup> day of January, 1910.

APPROVED:

*W. D. Twichell*  
State Surveyor.

Commissioner General Land Office.



W. J. WILLIAMS, Transcriber.  
 Bearings record angles from line.

I, W. D. TWICHELL, State Surveyor, do hereby certify that the foregoing survey is correct and that  
 was made in the field, in accordance with law, and that the limits, boundaries and corners with the  
 marks, natural and artificial, are truly and correctly described in the foregoing plat and field notes.

Re-surveyed 25th day of January, 1910.

*I.W.D. Trichell*  
 State Surveyor

APPROVED:

Commissioner General Land Office.

For Sketch See  
Other Side

# THE STATE OF TEXAS

LAMB COUNTY

Survey No. 67

Block No. T. 2.

Grantee: R. M. Thompson.

True Mag. Var.  $12^{\circ}$  E.

CORRECTED FIELD NOTES of a re-survey of 640 acres of land situated in Lamb County, about 6 miles N.  $9^{\circ}$  from Olton, same being Section No. 67 Block No. T. 2. Original Grantee, R. M. Thompson made by me as State Surveyor, by virtue of Title LXXXIX, Chapter One, Revised Civil Statutes of 1895.

(All courses compared to a meridian passing through east side of Block and proved by observing Polaris, when in elongation. Azimuth  $1^{\circ} 25'$ )

BEGINNING AT an iron pipe and pile of stones set at the N.W. foot of hill for the N.E. corner of Section No. 66, this Block, wind mill bears  $N.20^{\circ}3'E.$ ;

Thence  $S.89^{\circ}16'E.$  at 822 varas pass an iron pipe and 2 pits set for the S.E. corner of Section No. 28, at 2439 varas set an iron pipe in the South line of Section No. 24, this Block, 283 varas from its S.E. corner;

Thence  $S.0^{\circ}44'W.$  at 1481 varas set stone and 2 pits, wind mill bears  $S.66^{\circ}3'W.$ ;

Thence  $N.89^{\circ}16'W.$  at 2439 varas set stone and 2 pits under fence, for the SE. corner of Section No. 66, this Block;

Thence  $N.0^{\circ}44'E.$  1481 varas to the place of beginning.

Bearings record angles from line.

W. J. WILLIAMS, Transitman.

CLAYTON WILLIAMS, } Chain Carriers.  
VERNON CURL,

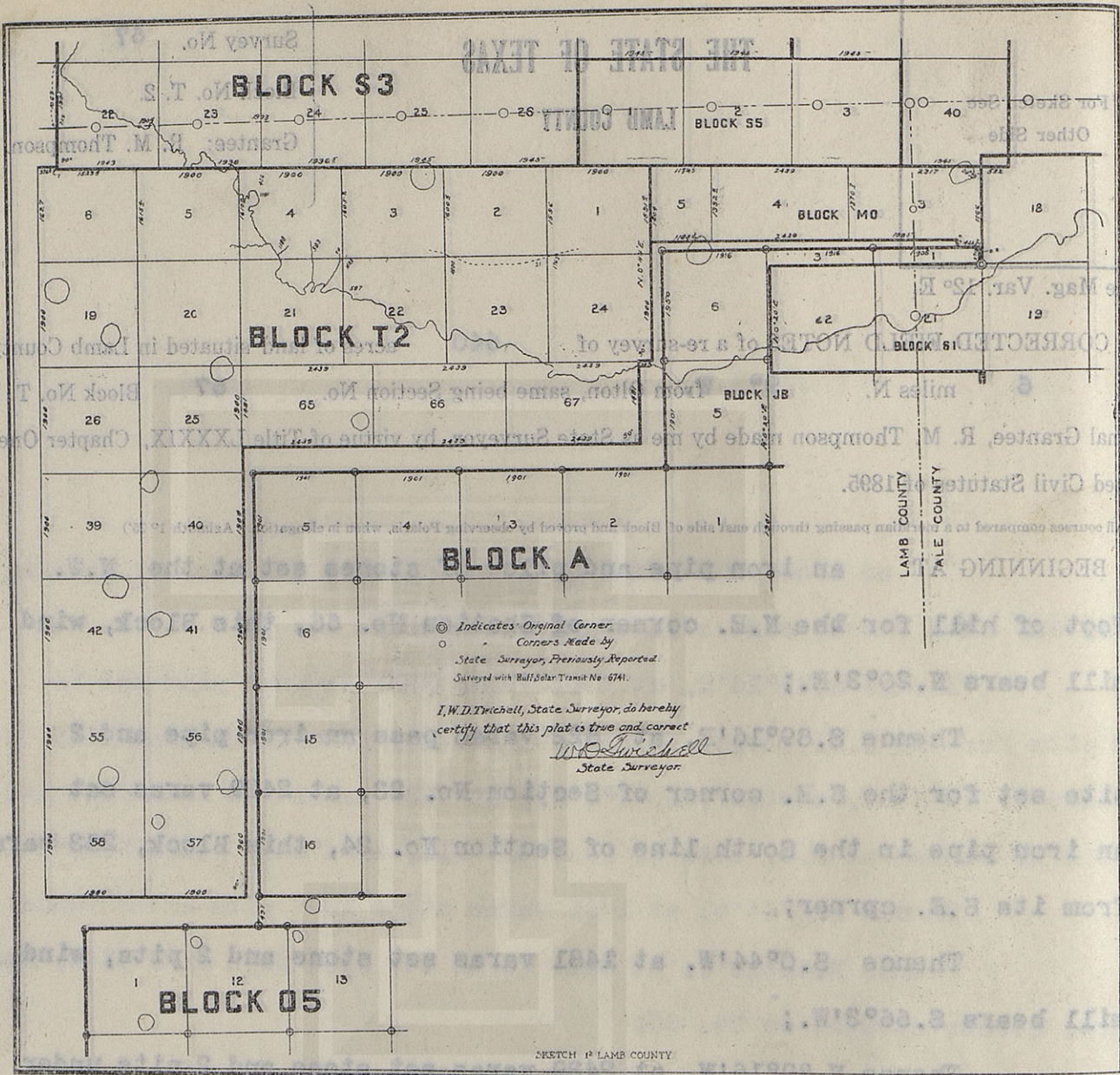
I, W. D. TWICHELL, State Surveyor, do hereby certify that the foregoing re-survey is correct and that it was made in the field, in accordance with law, and that the limits, boundaries and corners with the marks, natural and artificial, are truly and correctly described in the foregoing plat and field notes.

Re-surveyed 25<sup>th</sup> day of January, 1910.

APPROVED:

*W. D. Twichell*  
State Surveyor.

Commissioner General Land Office.



Re-surveyed 22<sup>nd</sup> day of January, 1910.

W. J. Williams, Transmittant.  
 Bearings record angles from line.

I, W. D. TWICHELL, State Surveyor, do hereby certify that the foregoing re-survey is correct and that  
 was made in the field, in accordance with law, and that the limits, boundaries and corners with the  
 natural and artificial, are truly and correctly described in the foregoing plat and field notes.

CLAYTON WILLIAMS } Chain Carriers.  
 VERNON CURTIS }

State Surveyor.

Commissioner General Land Office.

# THE STATE OF TEXAS

HALE COUNTY

Survey No. 61

Block No. A3.

Grantee: H.E.&W.T. R.R.Co.,

FOR PLAT SEE  
OTHER SIDE

CORRECTED FIELD NOTES of a re-survey of 317.6 acres of land situated in Hale County, about 19 miles S. 64° W from Plainview, same

True Mag. Var. 12° E.

being Section No. 61 Block A3, Certificate No. 408 issued to H. E. & W.T.R.

R.Co., made by me as State Surveyor, by virtue of Title LXXXIX, Chapter One, Revised Civil Statutes of 1895.

(All courses compared to a meridian passing through West line of Block A3, and proved by observing Polaris when at elongation. Azimuth 1° 25' 20".)

BEGINNING AT 4 pits set for the S.E. corner of this section No. 61, about 1 mile west of the S.W. corner of section No. 14, E.L. & R.R.R.Co. by State Surveyor J.H. Parks;

Thence N. 89° 45' W. at 363.4 varas set stone in line, at 409 varas cross road, at 1913 varas old cedar stake and stone buried at corner of fence, set by J.H. Parks, State Surveyor;

Thence N. 0° 21' E. at 555 varas set buggy hub and 2 pits, at 71 varas old pit made by J.H. Parks, at 932.8 varas set stone and 2 pits in the south line of section No. 24, Block J.D;

Thence East at 490.7 varas set 4 pits and 1/2" pipe for the S.E. corner of said section No. 24, at 1913 varas point in the south line of section No. 23, Block J.D;

Thence S. 0° 21' W. at 800 varas pass old pit made by Surveyor Parks, at 941.6 varas the place of beginning.

Bearings record true course.

W. J. WILLIAMS, Transitman.

CLAYTON WILLIAMS, } Chain Carriers.  
TOM MCGEE.

I, W. D. TWICHELL, State Surveyor, do hereby certify that the foregoing re-survey is correct and that it was made by me in the field, in accordance with law, and that the limits, boundaries and corners with the marks, natural and artificial, are truly and correctly described in the foregoing plat and field notes.

Re-surveyed 5th day of August, 1909.

APPROVED:

State Surveyor.

Commissioner General Land Office.

File No.

County.

Corrected Field Notes

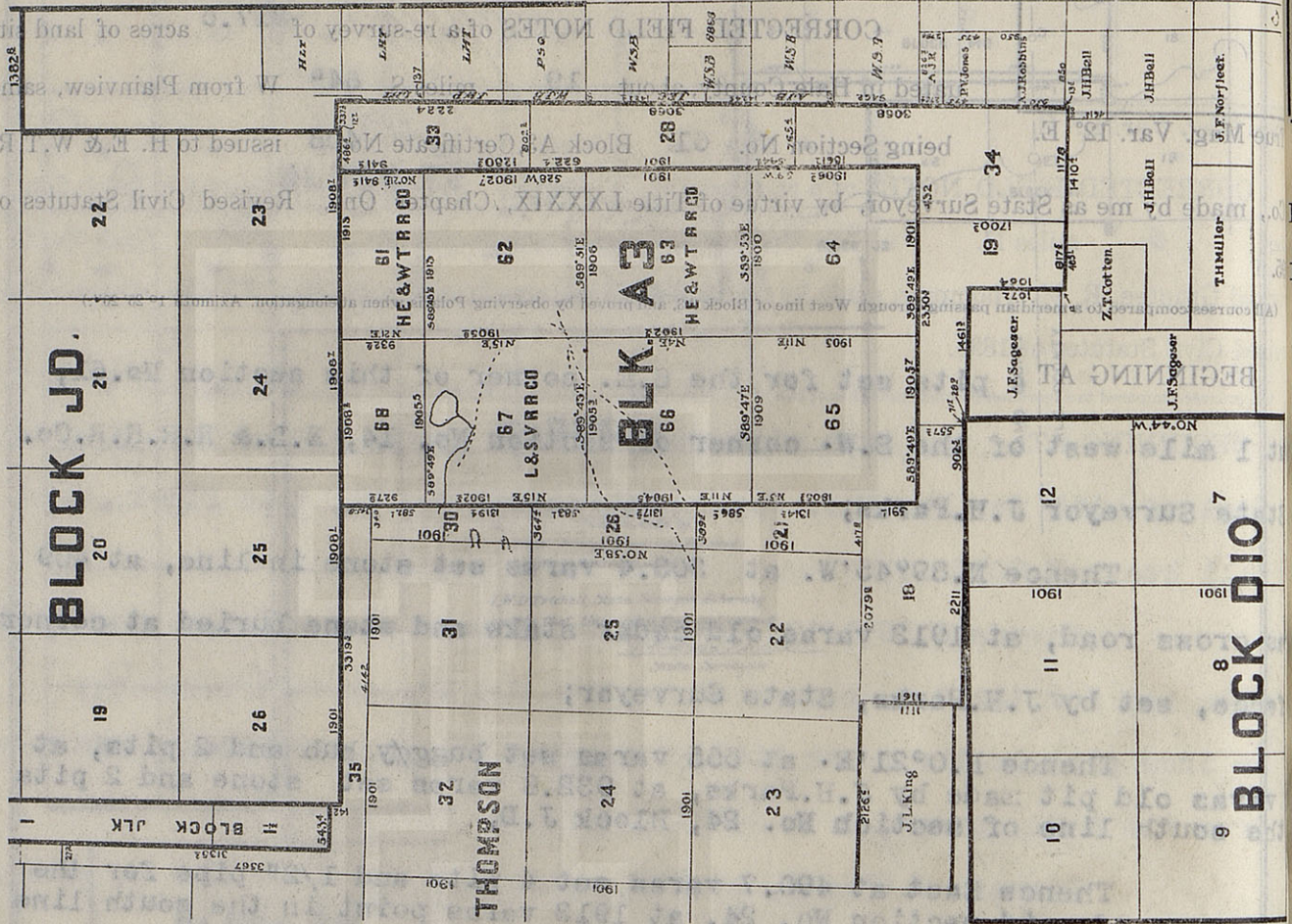
Survey No.

Filed

Commissioner.

File Clerk.

Surveyed with Buff Solar Transit No. 6741



CLAYTON WILLIAMS, Chain Carrier.  
TOM MCGEE, Chain Carrier.  
The foregoing survey is correct and that the limits, boundaries and corners with the foregoing plat and field notes.

Re-surveyed 5th day of August, 1909.  
I, W. D. TWICHELL, State Surveyor, do hereby certify that the foregoing survey is correct and that the limits, boundaries and corners with the foregoing plat and field notes, are truly and correctly described in the foregoing plat and field notes.  
W. J. WILLIAMS, Transmittal.  
Bearing's record true course.

Commissioner General Land Office.

THE STATE OF TEXAS

HALE COUNTY

Block No. A3.

Grantee: H.E. & W.T. R.R. Co.

Survey No.

APPROVED:  
it was  
marks,  
Re-surveyed

True M  
R. Co., m  
1895.  
(All co  
B  
non  
cross  
pipe  
or  
on 11  
1906  
corner  
varv  
burd  
set

# THE STATE OF TEXAS

HALE COUNTY

Survey No. 62

Block No. A3.

Grantee: H. E. & W. T. R. R. Co.,

FOR PLAT SEE  
OTHER SIDE

CORRECTED FIELD NOTES of a re-survey of 643.9 acres of land situated in Hale County, about 20 miles S. 60° W from Plainview, same

True Mag. Var. 12° E.

being Section No. 62 Block A3, Certificate No. 408 issued to H. E. & W. T. R.

R. Co., made by me as State Surveyor, by virtue of Title LXXXIX, Chapter One, Revised Civil Statutes of 1895.

(All courses compared to a meridian passing through West line of Block A3, and proved by observing Polaris when at elongation. Azimuth 1° 25' 20".)

BEGINNING AT post set in 4 old pits made for the S.E. corner of Section No. 61, this block, by State Surveyor J. H. Parks;

Thence S. 0° 28' W. at 952 varas middle of lane, at 1389 varas cross fence, at 1656 varas cross old road, at 1902.7 varas set 1-1/2" iron pipe 20" long with cylinder cap at bottom, by stone in ground set by Surveyor Parks, 1 varas North of fence;

Thence N. 89° 51' W. at 380.3 varas set strap of iron and 3 pits on line, at 644 varas cross road, at 684 varas point of hog wallow, at 1906 varas set stove iron by several small stones, the remains of Parks' corner from which corner post burned to the ground bears east 9.6 varas;

Thence N. 0° 15' E. at 189 varas cross road, at 559.7 varas set stove door and 3 pits, at 1905.8 varas old cedar stake and rock buried in ground at corner of fence, set by J. H. Parks, State Surveyor;

Thence S. 89° 45' E. at 1504 varas cross road, at 1549.6 varas set stone in line, at 1913 varas the place of beginning.

Bearings record true course.

W. J. WILLIAMS, Transitman.

CLAYTON WILLIAMS, } Chain Carriers.  
TOM MCGEE. }

I, W. D. TWICHELL, State Surveyor, do hereby certify that the foregoing re-survey is correct and that it was made by me in the field, in accordance with law, and that the limits, boundaries and corners with the marks, natural and artificial, are truly and correctly described in the foregoing plat and field notes.

Re-surveyed 5th day of August, 1909.

APPROVED:

State Surveyor.

Commissioner General Land Office.