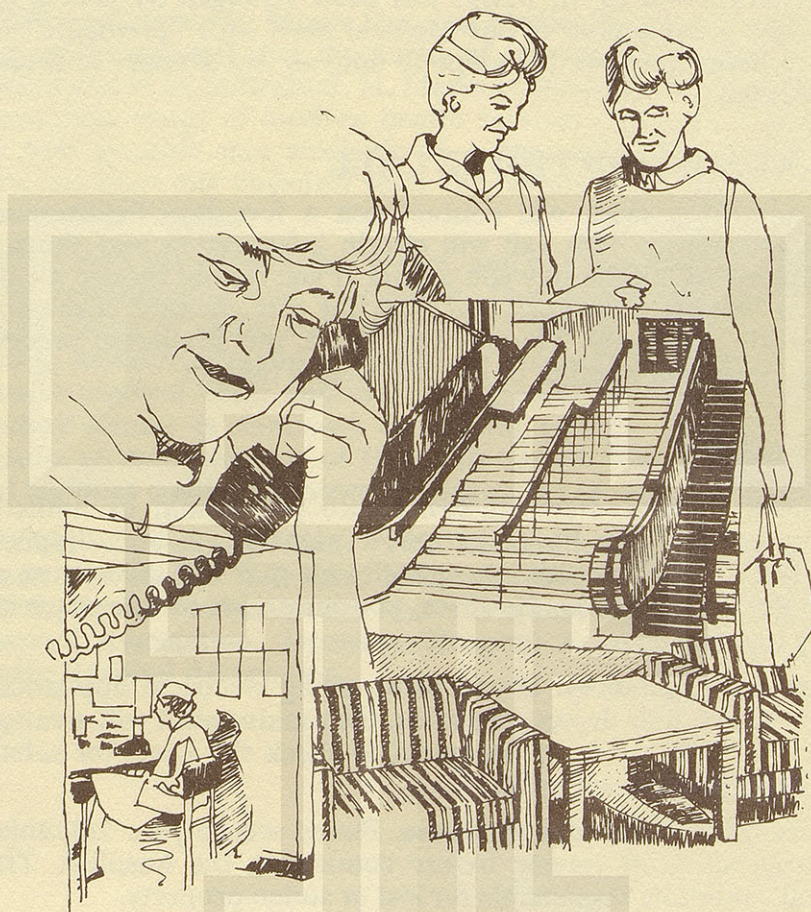


ADMISSION (You Arrive at St. Marys)



1. The Main Entrance. Our front door is at 707 South Mills Street. There is free parking across from the entrance, and there is a small shelter in the Parking Lot which will give you access to St. Marys lobby through a tunnel.

2. The Main Lobby. If you do not come through the tunnel, you may take the escalator or elevator from the Mills Street entrance to the main lobby on A level.

3. Admission Area. Right next to the lobby is the admission area. Admission time is from 1 p.m. to 3 p.m. Of course, if you were admitted through the emergency service, you may not visit the admission area.

If your time of arrival will be delayed, please contact the admissions office at 251-6100, ext. 681, 682, or 683.

4. Lab Work. Generally, Lab tests will be completed for your convenience at the admission area. Next, you will be escorted to your nursing unit.

5. Welcome! Now you arrive at the unit which will be your home for a while, and nursing personnel will greet you. Someone will show you to your room and introduce routines of the unit. Your physician will be notified of your arrival and the plan of care for your hospitalization will be confirmed. The nurse will demonstrate the operation of the nurse-call system and the electric bed.

If you are sharing a room, you will be introduced to your roommate. Your roommate, family and friends should be treated with the courtesy you and your family wish to receive.

6. Questions. Always feel free to ask questions and share your concerns with your doctor and with the hospital personnel who care for you.

In addition, there is a general nursing service supervisor whom you may reach at any time by dialing the St. Marys operator and asking to have the supervisor call or visit.

SPECIAL ADMISSION

I. Surgical Day Care

The Surgical Day Care program provides care for patients who are to have minor surgical procedures which require hospitalization but do not require extended or even over-night hospitalization.

The unit is located on 2 West and operates three days a week. Your doctor will give you an instruction sheet with basic guidelines for the procedure you are to receive. You are requested to check at the admitting office at 7:00 a.m. on the morning of your scheduled surgery.

II. Emergency Suite

The Emergency Suite is located on A Level of the Northwest Wing and provides emergency treatment for injured and ill persons brought to this facility. It also provides examination facilities, immediate care, and referrals for further care to individuals with minor or subacute health problems.

The emergency suite is staffed with medical and nursing personnel and is open 24 hours a day.

III. Obstetrics

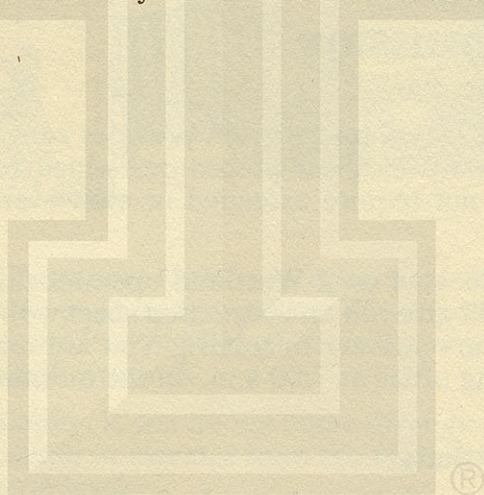
Over the past 15 years, St. Marys Hospital Medical Center has had the largest obstetric service in south central Wisconsin. It provides the most modern facilities and highest quality of care both to the mother with normal delivery and to the mother who requires services and expertise necessary for obstetrical complications. The Infant Intensive Care Unit is for newborns who face special risks; it serves a large regional population.

St. Marys features a comprehensive program which recognizes the importance of a family-centered obstetrical service.

During the day, the expectant mother may be admitted through the main admitting area. However arrival at the emergency suite area is requested at evening and night time. In all cases, the mother is taken directly to the labor-delivery area on 2nd level in the East Wing. The father or another family member remains behind to complete admission records.

IV. Ambulatory Care

Your doctor can make arrangements for hospital services for out-patients. These services can include diagnostic, therapeutic, preventive or rehabilitative services. Registration takes place in the admitting office and you will be escorted to the appropriate department.



®

PER

Tele

Col
servic
servic

Mail

Ma
will b
given

Sta
cart o

Flowe

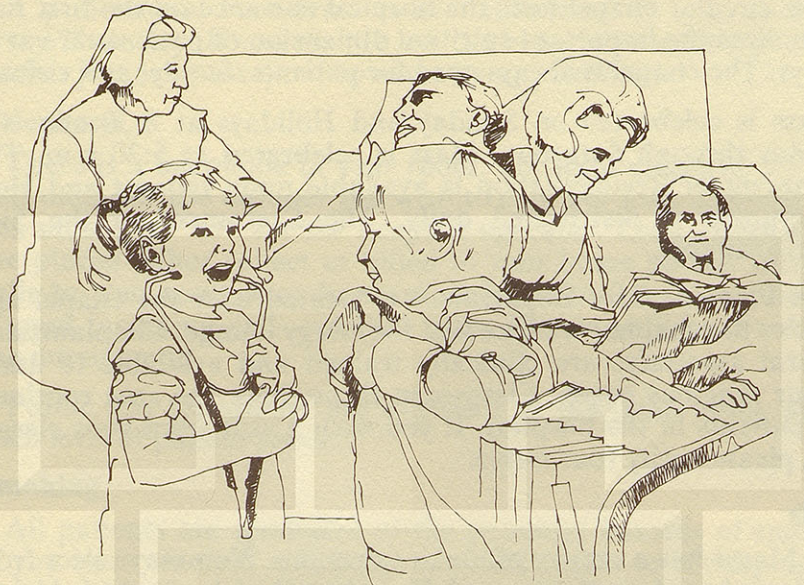
Flo
once
ments

Gift S

The
Mon
Sund
flowe

The
and 3
patien

PERSONAL SERVICES



Television

Colored television sets are available through an independent TV service for a daily rental fee. Ask your nurse if you wish this service.

Mail

Mail is delivered to your room daily. After discharge, your mail will be forwarded to your home address. Outgoing mail can be given to a nurse or volunteer for mailing.

Stationery, cards, and stamps can be purchased from the gift cart or by calling the gift shop.

Flowers

Flowers which are sent to you by friends are delivered by florists once a day to the hospital. Volunteers then deliver the arrangements to your room, usually in mid-afternoon.

Gift Shop, Gift Cart

The Rose Marie Gift Shop is open from 10 a.m. until 8 p.m. Monday through Friday and 2 p.m. to 4 p.m. on Saturday and Sunday. In addition to "necessity items", the gift shop handles flowers, gifts and toys for patients.

The gift cart is available on the nursing units between 1 p.m. and 3 p.m. daily with a selection of magazines, cards, and other patient needs. These services are operated by St. Marys Auxiliary.

Religious Service

The circular chapel near the hospital entrance on the first floor symbolizes the important spiritual dimension of patient care at St. Marys. The chapel is always open for patients, family, and visitors.

Mass is celebrated on Sunday and Holidays at 8:30 a.m. On Monday through Saturday, Mass is celebrated at 5:30 p.m. The Sacrament of Reconciliation is available upon request and Holy Communion is distributed daily. The Sacrament of the Sick is also available.

The Pastoral Care Department is located near the chapel and includes the chaplain's office and the clergy lounge. Chaplains and pastoral associates are clinically trained and available to assist in your religious needs. Clergymen throughout the area routinely visit patients in the hospital. If you wish a visit from your clergyman, please notify your nurse.

Meals

St. Marys has a variety of menu selections. You may select from the menu based on the type of diet prescribed by your physician. You will be visited by a dietary staff member to help you make your selection for each meal. The selection begins with breakfast following the initial visit of a dietitian. All items you wish should be checked on the printed menu provided.

On your birthday and/or anniversary a small cake or other appropriate remembrance will help you celebrate your special day.

If you are on a general diet, you may eat in the dining room in order to share a meal with family or friend. A written notice, however, is required from your nurse, who needs to know where you may be reached and to notify the dietary personnel not to prepare a tray meal.

Newspapers

Newspapers are available in the vending machines in the dining room-vending area. A newspaper courier will visit patient rooms every morning with the Wisconsin State Journal and every evening (except Sunday) with the Capital Times. Ask your nurse to attach a sign to your door requesting a paper so that the delivery person will stop.

The Milwaukee Sentinel as well as the State Journal and Capital Times may also be purchased in the vending machines located near the Dining Room in the vending machine area on A level of the West Wing.

Beautician and Barber Service

A professional beautician is available from 10 a.m. to 4 p.m. every Thursday. If you wish to use the beautician service or need a barber just ask your nurse to make an appointment.

Telephone

There is a telephone in your room. For local calls dial "9" first and then dial the number you wish to call. For long distance calls, you must dial "O" for the hospital operator. Long distance calls are placed either collect or billed to your home phone. Incoming calls to your room may be received between 7 a.m. and 10 p.m. Urgent incoming calls received after 10 p.m. will be directed to the nursing unit.

Public pay telephones are available in the main lobby and on each level of patient areas.

Smoking

All patients are reminded of the potential hazards of smoking. If you have received a hypodermic medication or a sleeping pill, you should never smoke. Smoking is forbidden in rooms where oxygen is in use or at any time when in bed unless attended by a staff member or member of your family. Smoking is not permitted in corridors, elevators, stairwells, or lounges that have been designated as no smoking areas.

Library Cart

The library cart is available on Tuesday and Thursday from 1 p.m. to 3 p.m. on the nursing units and a varied selection of books is available for your enjoyment.

Foreign Language

Translators are available. Your nurse will be glad to make the arrangements for you.

Traduttori si possono ottenere. Gli infermieri sono felici di accomodare.

Tenemos personas que pueden traducir.

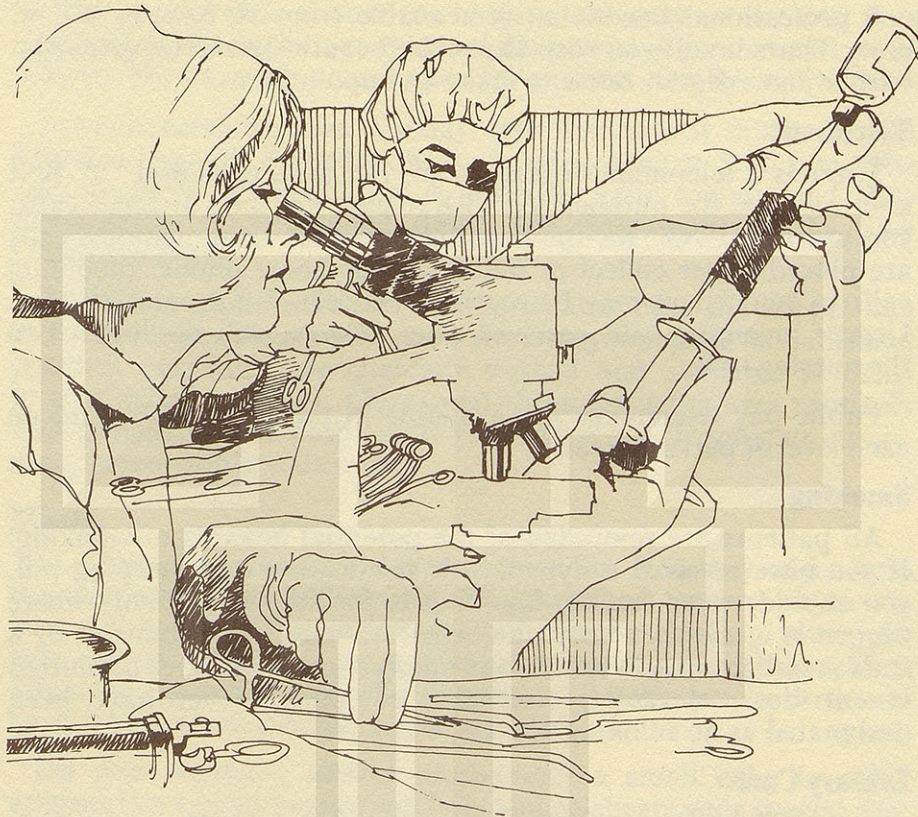
Su enfermera estará contenta de ayudarle con una persona que habla español.

Un interprète est à votre service à l'hôpital. Votre infirmière sera heureuse de vous faire l'introduction.

Übersetzungen können gemacht werden.

Thre krankenschwester will alles erledigen für sie.

HOSPITAL FUNCTIONS



There are some 1300 hospital personnel at St. Marys who serve you. The administration is responsible for the overall operation of the hospital.

The Medical Staff consists of about 400 physicians who meet the standards for medical staff membership.

An advanced program of concurrent review at St. Marys assures that your care is of the highest quality. The medical staff of St. Marys Hospital Medical Center has been specially designated to provide utilization review for Medicare and Medicaid and other patients. This means that your record is reviewed regularly by qualified physicians other than your personal physician. Your treatment plan and progress is examined and compared with established standards of care. This helps to insure the best possible care for you in a timely manner.

Resident physicians may assist your doctor in your care. These doctors are part of the affiliation program between St. Marys and the University of Wisconsin Medical School.

Nurs

Un
super
nel in
perso
nurs
there
you i

Hom

If
when
tered
arran
comm
and
may

Inter

Th
serio
Mar

- M
- p
- c
- C
- d
- a
- T
- f
- T
- b
- T
- c
- c

Phar

St.
pres
at St
will
supp
prov
for a



Nursing Service

Under the Director of Nursing Service, the nursing service supervisors and head nurses coordinate the nursing service personnel in providing the best nursing care possible to you. Department personnel include registered nurses, licensed practical nurses, nursing assistants, and other support personnel. At St. Marys there is a special tradition of caring that guides their service to you in a personalized way.

Home Care

If you and/or your family are concerned about follow-up care when you leave the hospital, our home care coordinator is a registered nurse who can help answer questions and make necessary arrangements. The nurse can coordinate referrals to helpful community agencies, teach patients about special self care needs, and suggest other resources that may be helpful. Your physician may ask the home care coordinator to visit you.

Intensive Care Units

The Intensive Care Units provide highly skilled care for the seriously ill patient. There are five intensive care services at St. Marys:

- Medical Intensive Care provides immediate treatment of patients with diagnosed or suspected critical medical conditions.
- Coronary Care provides immediate treatment of patients with diagnosed or suspected myocardial infarctions (a type of heart attack).
- The Pediatric Intensive Care provides high level nursing care for critically ill children.
- The Infant Intensive Care Unit cares for the high risk infant born either at St. Marys or transferred from another hospital.
- The Surgical Intensive Care Unit provides constant nursing care for patients with complicated surgical procedures such as cardiac surgery and severe trauma.

Pharmacy

St. Marys Pharmacy, staffed with registered pharmacists, fills all prescriptions ordered by your physician while you are a patient at St. Marys. Upon discharge from the hospital, the pharmacy will fill one-time-only prescriptions so that you will have a basic supply of the medicine when you return home. Your doctor will provide you with a prescription to take to your own pharmacist for additional needs.

Dietary

The Dietary Department, staffed with registered dietitians and many skilled food service personnel, prepares the well-planned and nutritious meals. If your physician orders a special diet, a dietitian will meet with you and explain the special diet and assist you in learning how to manage the diet. Dietitians also may meet with you and your family to discuss menu planning for special diets you may need when you return home.

S.T.A.R. (outpatient Psychiatric)

St. Marys has a psychiatric outpatient program called S.T.A.R. which offers group therapy, occupational therapy, and other types of supportive programs. Patients participate in this program when referred by a physician who works with the staff in providing the support to patients.

Laboratory and Blood Bank

On admission the Laboratory Department will conduct blood and urine tests. The Lab has a small work area located at the admission area. The main Lab is located on 4 South and new patients may be directed to visit that area for initial tests. During your stay at St. Marys, a member of the Lab staff will visit your room from time to time to obtain test samples. Highly qualified technological personnel perform the tests in such lab areas as chemistry, bacteriology, blood bank, body fluids, and histology. The staff works under the technical direction of special physicians called pathologists.

For anyone in need of blood or blood products, St. Marys maintains a blood bank in the laboratory. The vital need for blood involves both surgery and the treatment of other conditions. St. Marys participates in the voluntary Regional Badger Red Cross Blood Program which coordinates the collection of blood and the sharing of the blood and blood products for a large area of the state.

Radiology and Nuclear Medicine

Your physician may order x-rays in order to determine the course of treatment. The Radiology and Nuclear Medicine Department has many registered technicians and technologists who assist in conducting examinations. The results are interpreted by one or more of seven radiologists and reported to your private physician.

This Department performs a number of different types of tests. The most common is the X-ray where images are produced on film. A study of fluids moving through the intestine is one of the uses of Fluoroscopy. Minute doses of radioactive materials are used in nuclear medicine to conduct tests. A relatively new test is Ultrasound, which is known as a non-invasive method of diagnosis involving sound waves. Angiography is an important radiology tool which results in studies of blood vessels made after special dyes are injected into the vessels.

Brochures about Radiology and the procedures are available in lounge areas. Ask your physician or nurse about them if you are interested.

Electroencephalogram

An Electroencephalogram (EEG) records neurological dimensions for consideration by special physicians known as neurologists. It is a measurement of the brain's electrical activity and involves placing wire contacts on the scalp. The technique is conducted in a comfortable setting, either in your room or the EEG room.

Cardiac Services

1. Cardiograms

- **Electrocardiograms**
An electrocardiogram (EKG or ECG as it is called) may be ordered by your doctor to study the electrical activity of your heart. The ECG Technicians obtain electrocardiograms which are read by physicians who have special training in heart functions.
- **The Stress Electrocardiogram**
This is a special study of how the heart responds to graded exercise.
- **The Echocardiogram**
High frequency sound waves are recorded as they are reflected off the heart. It is used to study the thickness of the heart chamber.
- **Phonocardiogram**
A graphic recording of heart sounds is a phonocardiogram
- **Vertocardiogram**
A photograph is used to measure the magnitude and direction of the electrical action of the heart.

2. Cardiac Laboratory

Cardiac catheterizations involve the insertion of a tiny tube into a blood vessel leading to the heart. This enables dyes to be injected into the blood so that a specialist known as a cardiologist may study the heart by a fluoroscope (x-ray) and make a video or film record. Specially trained nurses and technicians assist the doctor in the lab.

Respiratory Therapy

Registered therapists and other specially trained respiratory therapy personnel provide treatments ordered by your physician. These treatments may include oxygen, breathing exercises, and the use of respirator to assist breathing. Pulmonary (relating to the capacity and function of the lungs) testing is also a growing service which may be ordered by your physician to assist in a diagnosis.

Physical Therapy

Rehabilitative services are available through the Physical Therapy Department. The department services include exercise equipment, whirlpools and other assisting devices to help both inpatients and outpatients achieve the highest level of independent function. For instance, if you will need crutches, your physician will ask that a registered physical therapist instruct you in learning to use the crutches.

Occupational Therapy

Registered Occupational Therapists assist patients in achieving high levels of independence in activities of daily living. The general medicine and surgical program of OT includes treatment to improve use of arms and hands following certain illnesses.

Other programs include recreational activity for psychiatric patients and a playroom program for pediatric patients. A joint protection program for arthritic patients and rehabilitation services are provided to patients as ordered by their physicians.

Auxiliary

More than 630 dedicated women and men comprise the St. Marys Hospital Medical Center Auxiliary and provide a wide range of services. Members escort patients from one area of the hospital to another, distribute mail and flowers daily, operate the gift cart, and staff the Rose Marie Gift Shop, among other duties.

Volun

The
writin
visit w
career

The
suppo
tray fa

Social

The
aid the
that m
puts th
worke
or con
munit
facility
from t

Inserv

The
through
the ye
person
helps
knowl

Medic

The
physic
knowl
countr
ranger
resour
hospit

Securi

The
securi
availa
can be
ity sys
is loca
ing lot

Volunteers

The Youth Volunteers, age 15 to 18, often assist patients in writing letters, act as messengers, deliver flowers on weekends, visit with patients, and learn about hospital functions and health careers.

The Junior Volunteers, from age 11 to 14, concentrate in supportive areas outside of patient areas but you may see a meal tray favor from their efforts.

Social Services

The Social Service Department has a staff of social workers to aid the patient and the patient's family in meeting social problems that may interfere with the patient's health. A physician referral puts the patient and family in contact with the department. Social workers meet the patient and family to discuss special problems or concerns. The staff is available to assist with obtaining community resources for nursing at home, extended care in a special facility or other special needs which may arise after discharge from the hospital.

Inservice

The Inservice Education Department promotes patient care through continuing education for hospital personnel. Throughout the year, classes are held in the hospital on dozens of topics for personnel from all areas of the hospital. Continuing education helps to maintain and enhance skills and to update and expand knowledge.

Medical Library

The Medical Library is a resource information center used by physicians and hospital personnel to keep abreast of medical knowledge. St. Marys is one of a small number of hospitals in the country which has a computer terminal and cooperating arrangements with a network of libraries including national resources to serve the reference needs of physicians and of other hospital staff.

Security

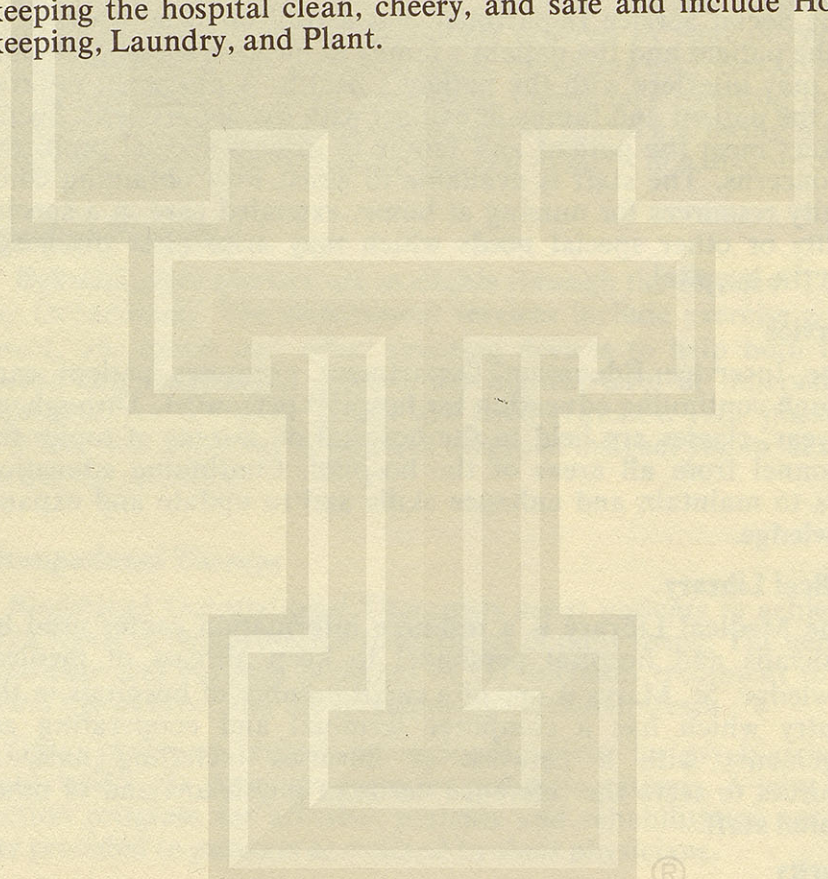
The Security staff is on duty 24 hours a day making continuous security checks of the hospital and grounds. Personnel are available to escort late night visitors to automobiles. This service can be obtained by calling the switchboard. (Dial "O") The security system also includes a network of audio visual equipment which is located in the main tunnel connecting the hospital to the parking lot (Level "A" by the escalator).

Other Departments

The Fiscal Department is responsible for keeping your accounts accurate and the Medical Records Department maintains up-to-date medical data and statistical information.

The Personnel Department is responsible for employee services. The Community Relations Department conducts a variety of services relating the hospital to the community served.

Central Supply and Purchasing handle supplies and equipment for patient needs. Environmental services are responsible for keeping the hospital clean, cheery, and safe and include House-keeping, Laundry, and Plant.



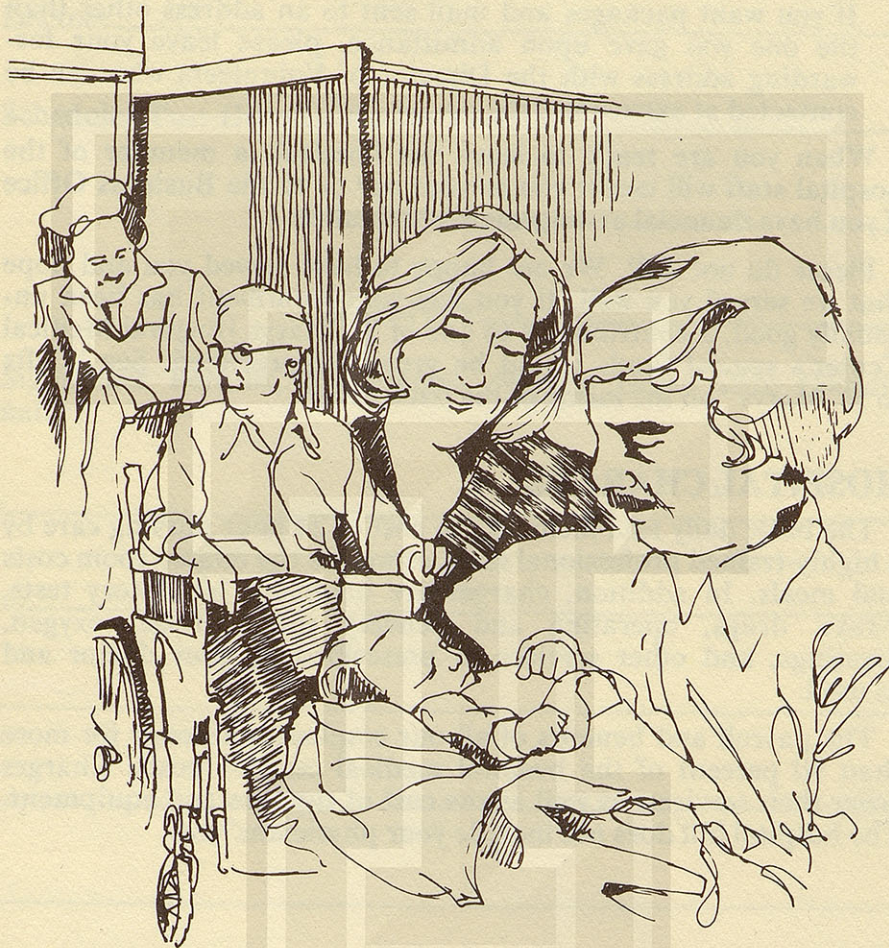
GOD



Wh
hospit
charg

Che
the h
specia
transp

GOING HOME



When your physician feels that you are ready to leave the hospital, a discharge order will be written to inform the nurse in charge.

Check out time at St. Marys is at noon. If you are unable to leave the hospital by noon, we ask that you check with a nurse for special arrangements. Any questions or help in obtaining transportation, may be directed to your nurse for assistance.

Things to remember when checking out:

- If you have a book from the library cart, please leave it at the nursing station.
- Check drawers and closets for clothing, cards, gifts, letters and other items.
- If you want packages and mail sent to an address other than the one you gave upon admittance, please leave your forwarding address with the Director of Volunteers who can be contacted at extension 315.

When you are ready to leave the hospital, a member of the hospital staff will escort you to your car or to the Business Office if you have financial arrangements to finalize.

Please do not TIP. We are happy to have served you and hope that we served you well. If you feel your treatment has been unusually good, a contribution to one of St. Marys Hospital Medical Center's special funds would be greatly appreciated. See "Gifts to St. Marys" on the inside of the back cover.

HOSPITAL CHARGES

The basic daily rate includes the cost of 24 hour nursing care by a highly-trained professional staff, as well as the related room costs and meals. In addition, charges are made for laboratory tests, x-rays, drugs, operating and delivery suite service, oxygen, dressings, and other services as prescribed by your doctor and as used.

The payroll and benefits of all our employees account for more than 60 percent of the hospital medical center's costs. Charges cover their services, as well as the cost of supplies and equipment. The hospital bill does not include your physicians' fees.

HOSPITAL LOG

Room Number _____ Date _____

Doctors _____

Scheduled Post-Hospital Doctor Visit _____

Phone _____

Date/Time _____

Significant Persons, Roommates, Nurses, Home Care Coordinator;

VISITOR INFORMATION

St. Marys Hospital Medical Center's first concern is patient care, and a restful environment is an important part of the health program. To maintain a patient-centered atmosphere, these guidelines have been established:

- Visiting Hours 11 a.m. 8 p.m.
- Please limit visitation time to meet the needs of the patient.
- Only two visitors should visit at one time.
- Visitors may smoke only in designated areas.
- Observe NO VISITOR and ISOLATION signs. (ask unit nurse for additional information)
- Gifts of food and beverage should be checked with the nurse to be sure they are compatible with the patient's treatment plan.
- Please do not leave small children unattended. (The Gallery Room, located on Level "A", is available for you and your children and is equipped with a television and a variety of toys)
- A patient's resistance to disease may be low so visitors are asked to avoid visiting when they have a cold or infectious disease.
- Always be considerate of the other patients.

FOR SPECIALIZED AREAS of the hospital, we ask that visitors comply with the following:

Medical Intensive Care-Coronary Care-Surgical Intensive Care

- Visitors are limited to the immediate family.
- Only one person may visit at a time.
- Visiting is limited to 5 minutes every hour.
- Visiting hours are from 2 p.m. to 8 p.m. (special exceptions may be made with nurse-in-charge)

Pediatrics

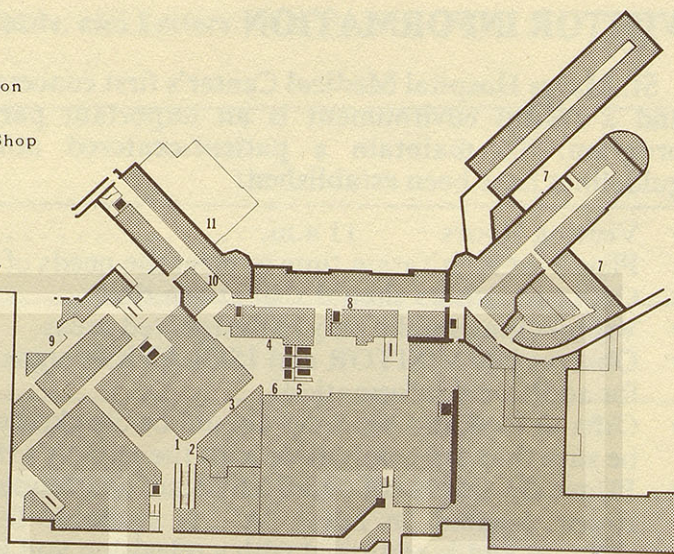
- Visiting Hours 7 a.m. 8 p.m.
- Children under 14 are not allowed to visit (exceptions require special permission from the nurse-in-charge)
- Naptime is from 11:30 a.m. to 1:30 p.m. Restricted visiting is encouraged at that time.

Pediatric Intensive Care Units

- Visiting is restricted to parents, clergymen, and grandparents.
- Only two visitors are allowed to visit at one time.
- Visiting is limited to 5-10 minutes an hour.
- **Please refer to special ICU booklet.**

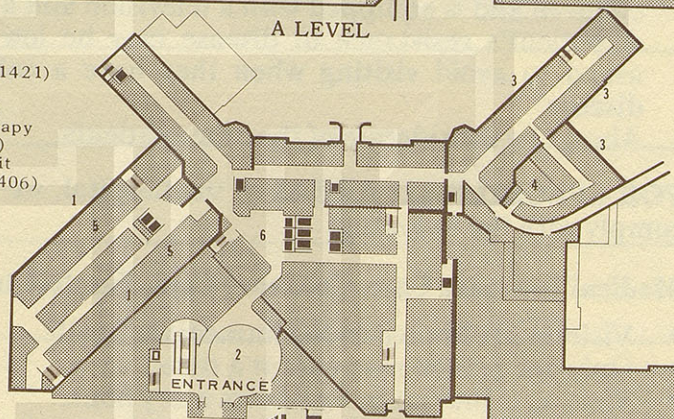
- 1 Lobby - information
- 2 Admissions
- 3 Business Office
- 4 Rose Marie Gift Shop
- 5 Dining Room
- 6 Vending Area
- 7 Pediatrics
- 8 Personnel Office
- 9 Emergency Suite
- 10 Volunteer Office
- 11 Physical Therapy

■ Elevators



A LEVEL

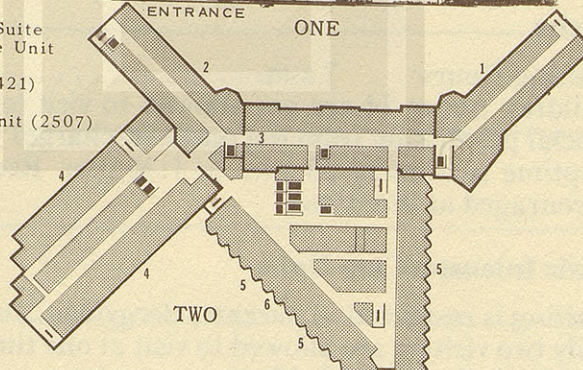
- 1 1 Northwest(1401-1421)
- 2 Chapel
- 3 1 South (113-1131)
- 4 Occupational Therapy
- 5 Medical (Coronary)
- Intensive Care Unit
(1417-1418-1405-1406)
- 6 Social Service



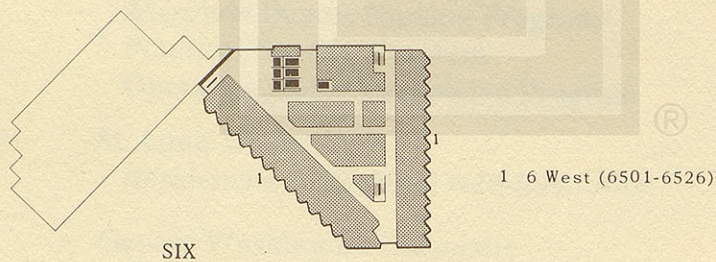
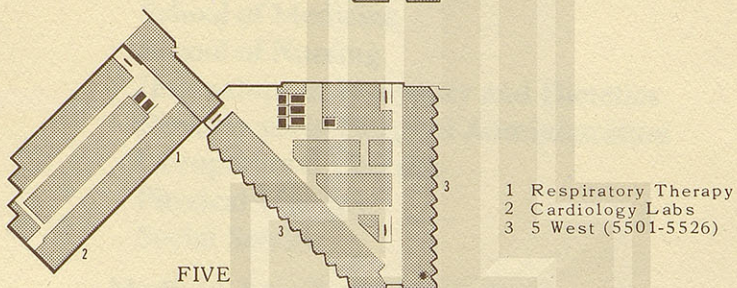
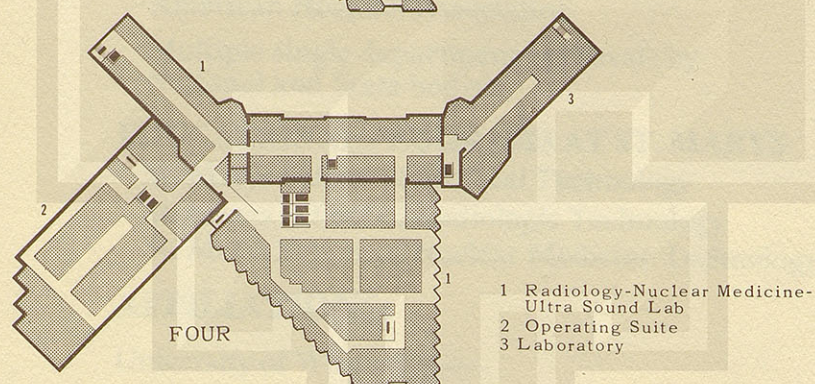
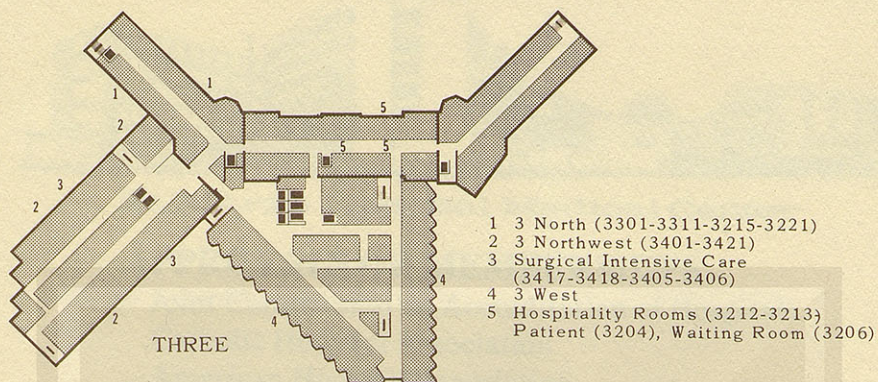
ENTRANCE

ONE

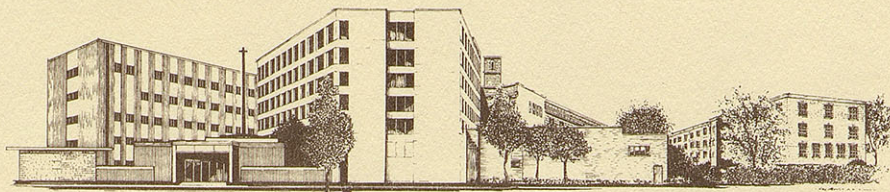
- 1 Labor and Delivery Suite
- 2 Infant Intensive Care Unit
- 3 Newborn Nursery
- 4 2 Northwest (2401-2421)
- 5 2 West (2501-2526)
- 6 Surgical Day Care Unit (2507)



TWO







St. Marys Hospital Medical Center

APPROVALS OR MEMBERSHIPS

Joint Commission on Accreditation of Hospitals
Catholic Hospital Association
American Hospital Association
Multiple single department approvals by
National and State bodies

EDUCATIONAL PROGRAMS AT ST. MARYS

St. Marys School of Medical Technology
St. Marys School of Radiologic Technology
St. Marys School of Nuclear Medicine Technology

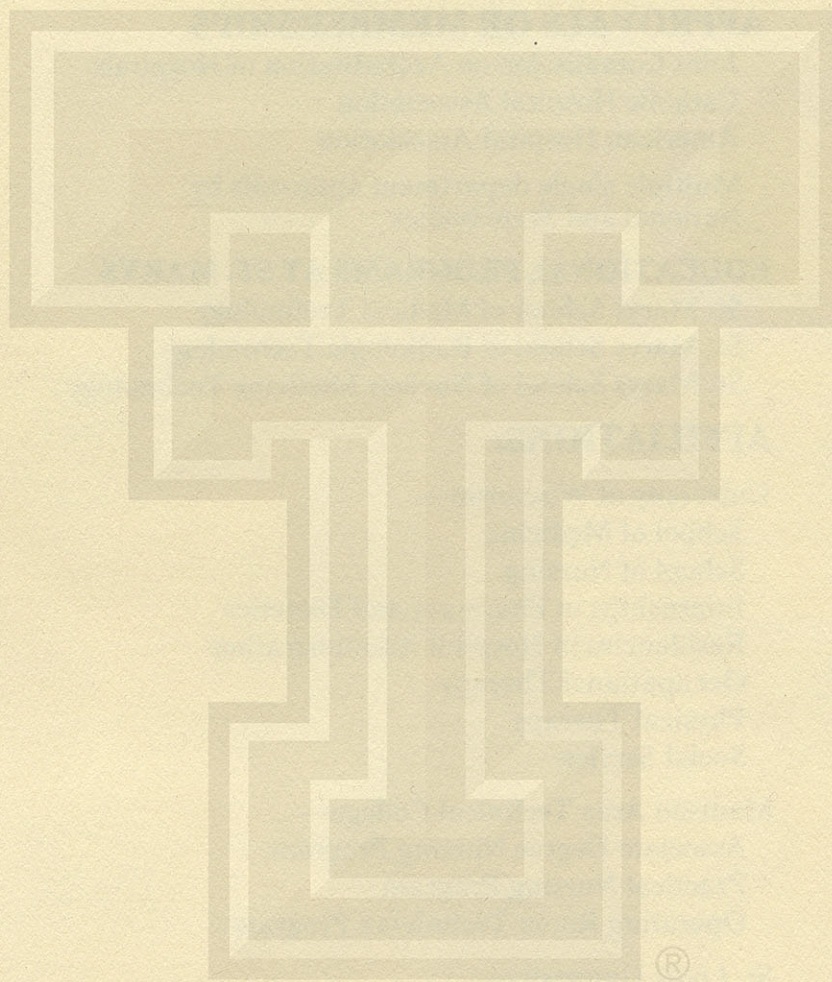
AFFILIATIONS:

University of Wisconsin—
School of Medicine
School of Nursing
Internships in Pharmacy and Dietetics
Residencies in Hospital Administration
Occupational Therapy
Physical Therapy
Social Service

Madison Area Technical College—
Associate Degree Nursing Program
Practical Nursing Program
Operating Room Technician Program

St. Louis University—
Residencies in Hospital Administration

George Washington University
Residencies in Hospital Administration



GIFT

Nur
gifts t
in su
to me
of the
and fe

Th
the h
envel



GIFTS TO ST. MARYS

Numerous friends of St. Marys have over the years contributed gifts to the hospital medical center which have been used to assist in supporting patient care. These gifts are needed continually to meet service demands, equipment needs, and other necessities of the hospital medical center. All gifts are deductible from state and federal taxes.

The Director of Community Relations will be happy to discuss the hospital medical center's financial needs with you. A gift envelope is included in this pocket for your convenience.



Help us to help others . . .

*place
stamp
here*

Sister Rebecca, S.S.M.
Chief Executive Officer
St. Marys Hospital Medical Center
707 South Mills Street
Madison, Wisconsin 53715

Enclosed is my contribution of \$_____ to assist the
(check one) ☐ Patient Monitoring Fund ☐ Please Use for Greatest Need
☐ Gifts for Health Learning ☐ Mother and Infant Fund
☐ Building Fund
☐ Pastoral Fund

of St. Marys Hospital Medical Center.

From:

NAME _____

ADDRESS _____

ZIP CODE _____

☐ I would like to make this
☐ A Memorial
☐ A Living Tribute
for: _____

Acknowledgment to be sent to:

Contributions are tax deductible.

788-01 5/77

PHILOSOPHY OF ST. MARYS

The principles governing St. Marys Hospital Medical Center, a Catholic Hospital owned and operated by the Sisters of St. Mary, evolve from the knowledge and belief that:

- every human being is created by God for an eternal destiny;*
- every human being, of any race, creed, color, sex, nationality or economic status, has been endowed by the Creator with certain natural rights;*
- these natural rights impose corresponding obligations;*
- every human being has the right to life;*
- the dignity of each person warrants a response from the hospital in terms of excellence in the provision of care.*

QUESTIONNAIRE

Since St. Marys exists to serve and care for you, it is important that we know what you think of the service you received. It is with the hope of constantly improving our services that we ask you to check the answers on the questionnaire, (you do not have to sign your name) and leave it at the Business Office or send it in. The importance of the opinions of you as our patient cannot be overstated, because it is through you that, important improvements in St. Marys have occurred and will continue to occur. If you should care to write a letter or drop us a card later, commenting in any way about St. Marys, we would appreciate hearing from you. Thank you very much for your cooperation.

**St. Marys Hospital
Medical Center**
707 South Mills Street, Madison, Wisconsin 53715

FIRST CLASS

Permit No. 2036

MADISON,
WISCONSIN

Business Reply Mail No postage stamp necessary if mailed in the United States

Postage will be paid by

ST. MARYS HOSPITAL MEDICAL CENTER

707 South Mills Street

Madison, Wisconsin 53715



ST. MARYS HOSPITAL MEDICAL CENTER QUESTIONNAIRE

	<u>Excellent</u>	<u>Good</u>	<u>Poor</u>
<u>My Admission Was:</u>			
Prompt	_____	_____	_____
Courteous	_____	_____	_____
Informative	_____	_____	_____
Friendly	_____	_____	_____

<u>My Room Was:</u>			
Clean	_____	_____	_____
Quiet	_____	_____	_____

<u>My Food Was:</u>			
Appetizing	_____	_____	_____
Attractive	_____	_____	_____
Sufficient	_____	_____	_____
Hot Food Hot	_____	_____	_____
Cold Food Cold	_____	_____	_____

<u>The Nursing Staff Was:</u>			
Efficient	_____	_____	_____
Courteous	_____	_____	_____
Concerned	_____	_____	_____

<u>Treatment by Other Hospital Personnel Was:</u>			
Lab Technicians	_____	_____	_____
X-ray Technicians	_____	_____	_____
Dietary Personnel	_____	_____	_____
Housekeeping Personnel	_____	_____	_____
Other Personnel	_____	_____	_____

<u>Services Were:</u>			
Telephone	_____	_____	_____
Television	_____	_____	_____
Mail Delivery	_____	_____	_____
Newspaper Delivery	_____	_____	_____

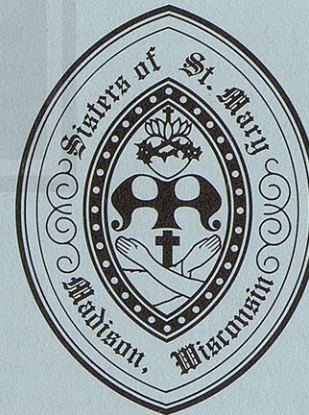
<u>Business Office Arrangements Were:</u>			
Courteous	_____	_____	_____
Prompt	_____	_____	_____
Explanations Adequate	_____	_____	_____



YOUR ROOM NUMBER _____

YOUR NAME _____
(optional)

COMMENTS



SAINT MARYS HOSPITAL MEDICAL CENTER
707 South Mills Street
Madison, Wisconsin 53715

EVENING PRAYERS

I

Father, I ask you to take from me now all that does harass and annoy, all that has laid upon my heart burdens of anxiety and care. I thank You for the stillness of this time of prayer — this oasis in my day when I can relax before You, lay my burdens down, and hand over to You all my anxieties.

At this moment, I open my heart to receive Your blessing, knowing that in Your presence the furrows are being smoothed from my brow, the lines from my face, the load from my heart, the doubts from my mind, the fears from my soul, and I am at peace.

And now, I thank You, not only for quietness without, but for Your quietness at the heart of the universe and for quietness within. In Your peace, I pray.

Amen.

II

*Lord, make me an instrument of Your peace;
where there is hatred, let me sow love;
where there is injury, pardon;
where there is doubt, faith;
where there is despair, hope;
where there is darkness, light;
and where there is sadness, joy.*

*O Divine Master, grant that I may seek not
so much to be consoled as to console;
to be understood, as to understand;
to be loved, as to love;
for it is in giving that we receive,
it is in pardoning that we are pardoned,
and it is in dying that we are born to
eternal life.*

PATIENT BEAUTICIAN SERVICE

TIME: Thursdays only, 10 a.m. until 4 p.m. (approximately)

FOR APPOINTMENTS: Call the Volunteer Center - Dial "0" and ask for extension
230 between the hours of 9 a.m. and 2 p.m.

PRICE LIST: Shampoo and Set (including special shampoos).....\$6.00
Shampoo and Set (long hair).....\$6.50
Hair Cut only.....\$5.00
Special - Shampoo, Set and Hair Cut.....\$9.50
Rinses.....50¢ extra

All of the above services are performed by a licensed Beautician. PLEASE
pay the Beautician. NO CHECKS ACCEPTED. This service cannot be put on your
hospital bill.

NOTE: We cannot loan our dryers. The Beautician may give permanents with a
written permission from the patient's doctor. For Male Barber Service,
inquire at the Nurses Station on your floor.

FOR YOUR CONVENIENCE - THE ST. MARYS HOSPITAL MEDICAL CENTER AUXILIARY PROVIDES
THESE SERVICES:

GIFT CART - brought to your bedside Monday through Friday from 1-3 p.m.,
featuring personal items and small gifts.

GIFT SHOP - open daily - 10 a.m. until 8 p.m., Monday through Friday and
2 until 4 p.m., Saturday and Sunday, featuring "gifts galore"
for everyone. Orders for flowers from Felly's are filled.
Ask for extension 229 for service.

LIBRARY CART - brought to your bedside Tuesdays and Thursdays with books
provided free by the Madison Public Library.

FROM HOME
DIAL 263-3100

ST1188 RADIATION FROM X-RAYS
ST1258 DISCOGRAM AND CHEMONUCLEOLYSIS
ST1342 COMPUTERIZED TOMOGRAPHY BRAIN SCAN

ST1014 WELCOME TO ST. MARYS HOSPITAL
ST1032 KNOWING THE ORGANIZATION
(INTRODUCTION TO SMHMC)
ST1051 CHURCH SERVICES - WHERE?
ST1074 WANT TO BE A HOSPITAL VOLUNTEER?
ST1097 WHY MEDICAL RESEARCH?
ST1232 HELLO FROM YOUR HOSPITAL CHAPLAIN

LEAVING THE HOSPITAL?

ST1023 HELP FOR HOME CARE
ST1268 GOING HOME WITH A URINARY CATHETER?
ST1054 VOCATIONAL REHABILITATION
ST1071 NURSING HOMES
ST1163 HOME ALONE? MOBILE MEALS

HOSPITAL PROCEDURES

ST1031 INTRAVENOUS THERAPY (IV)
ST1061 ORIGIN OF DONOR BLOOD - I
ST1062 CHARGES FOR TRANSFUSIONS - II
ST1015 BLOOD TRANSFUSIONS AND YOU - III
ST1003 WHAT IS OXYGEN THERAPY?
ST1072 WHAT IS RESPIRATORY THERAPY?
ST1083 DENTAL CARE FOR BED PATIENTS
ST1045 PERITONEAL DIALYSIS
ST1070 NEWS FOR OSTOMY PATIENTS
ST1229 OSTOMY APPLIANCES
ST1139 NEWS FOR LARYNGECTOMIES
ST1029 PHYSICAL THERAPY
ST1041 QUESTIONS ABOUT PHYSICAL THERAPY
ST1030 OCCUPATIONAL THERAPY
ST1004 SPEAKING AND HEARING
ST1170 WHY AM I IN ISOLATION?
ST1171 ISOLATION - BLUE SIGN
ST1172 ISOLATION - YELLOW SIGN
ST1173 ISOLATION - RED SIGN
ST1174 ISOLATION - BROWN SIGN
ST1175 ISOLATION - GREEN SIGN
ST1267 URINARY CATHETERIZATION
ST1260 WHEN IS THE ARTIFICIAL KIDNEY USED?
ST1262 BEGINNING HEMODIALYSIS TREATMENTS?

SURGERY

ST1423 FACING AN OPERATION
ST1038 BEFORE AND AFTER SURGERY
ST1064 BIOPSY - WHAT AND WHY?
ST1349 HEMORRHOIDECTOMY
ST1328 VARICOSE VEIN STRIPPING
ST1378 EMERGENCY CESAREAN SECTION
ST1056 HAVING A D & C?
ST1053 YOUR HYSTERECTOMY

DIAGNOSTIC PROCEDURES

ST1006 BLOOD STUDIES
ST1001 WHAT IS AN ELECTROCARDIOGRAM? (EKG)
ST1016 AN ELECTROENCEPHALOGRAM? (EEG)
ST1386 EMG AND NERVE CONDUCTION STUDIES
ST1039 PROCTOSIGMOIDOSCOPY (PROCTO)
ST1064 BIOPSY - WHAT AND WHY?
ST1073 GLUCOSE TOLERANCE TESTS
ST1230 MEASURING YOUR OWN BLOOD PRESSURE
ST1300 TREADMILL TESTING
ST1376 THERMOGRAPHY
ST1310 THE COLPOSCOPIC EXAMINATION

X-RAY

ST1375 MAMMOGRAPHY AND XEROGRAPHY
ST1009 BLADDER AND KIDNEY X-RAY (IVP)
ST1057 GALLBLADDER X-RAY
ST1058 X-RAY OF YOUR LARGE BOWEL
ST1059 X-RAY AND YOUR CHILDREN
ST1047 STOMACH AND SMALL INTESTINE X-RAY
ST1046 HAVING A MYELOGRAM?

NUCLEAR MEDICINE

ST1017 LIVER SCAN
ST1063 BRAIN SCAN
ST1161 RADIOACTIVE TRACERS
ST1178 THYROID STUDIES

COMMON HEALTH CONCERNS

ST1422 THE RUSSIAN FLU
ST1341 A.P.E.C. MEANS ALCOHOLISM TREATMENT
ST1138 HAVING HEADACHES?
ST1141 THE COMMON COLD
ST1279 THE FLU
ST1347 POSTNASAL DISCHARGE
ST1140 VENEREAL DISEASE
ST1275 GONORRHEA AND SYPHILIS
ST1148 VENEREAL WARTS
ST1345 GENITAL HERPES
ST1146 LICE ARE NOT NICE!
ST1147 I THINK I HAVE ATHLETE'S FOOT
ST1149 THE ITCH (SCABIES)
ST1182 CONSTIPATION A PROBLEM?
ST1348 LET'S TALK ABOUT HEMORRHOIDS
ST1205 LIVING WITH HAYFEVER
ST1165 THE MAGIC FORMULA FOR WEIGHT LOSS
ST1026 ARE YOU TAKING ANTACIDS?
ST1228 WHO NEEDS ACNE?
ST1207 SOMETHING IN YOUR EYE?
ST1252 HELP IF YOU'RE THINKING OF SUICIDE
ST1079 THINKING OF SUICIDE?
ST1169 HAVE YOU A CHRONIC COUGH?
ST1298 QUIT CIGARETTES - LIVE LONGER!
ST1327 VARICOSE VEINS

EMERGENCY CARE AND SAFETY

ST1379 SAVING YOUR BACK
ST1227 SAFE SNOWMOBILING
ST1087 PREVENTION OF SKI INJURIES
ST1233 FIRST AID TREATMENT FOR FROSTBITE
ST1234 FIRST AID FOR BURNS
ST1235 ABOUT HEAD INJURIES
ST1242 CARBON MONOXIDE - THE SILENT KILLER
ST1166 BEFORE YOU TAKE THE WHEEL
ST1207 SOMETHING IN YOUR EYE?
ST1278 EYE SYMPTOMS DEMANDING IMMEDIATE
ATTENTION
ST1247 HOW TO GET OUT OF A BURNING HOUSE
ST1249 HOME, SAFE HOME
ST1250 REYE'S SYNDROME
ST1251 WILL YOUR CHILD BE POISONED TODAY?
ST1252 HELP IF YOU'RE THINKING OF SUICIDE
ST1253 OUTDOOR ENTHUSIASTS AND HYPOTHERMIA
ST1254 MEDIC ALERT COULD SAVE YOUR LIFE
ST1256 HOW WILL YOUR CHILD REACT IN AN
EMERGENCY SITUATION?
ST1259 BIKE RIDERS ALERT
ST1320 RABIES AND ANIMAL BITES

GENERAL HEALTH INFORMATION

ST1089 DIABETES? WHAT DOES IT MEAN?
ST1203 WHAT CAUSES ASTHMA?
ST1204 THE TREATMENT OF ASTHMA
ST1154 NO TIME FOR EXERCISE?
(YOUNGER PEOPLE)
ST1077 PHYSICAL FITNESS THROUGH EXERCISE
(OLDER PEOPLE)
ST1184 ARE YOU GREATLY OVERWEIGHT?
ST1245 KNOWING YOUR KNEES
ST1208 EPILEPSY - CONTROL AND TREATMENT
ST1198 LIVING AND WORKING WITH AN EPILEPTIC
PERSON
ST1199 HOW TO AVOID EPILEPTIC SEIZURES

FROM HOME DIAL 263-3100

ST1202 EPILEPSY - LOOKING TO THE FUTURE
 ST1390 WHAT IS CEREBRAL PALSY
 ST1177 WHAT IS MUSCULAR DYSTROPHY?
 ST1197 PARKINSONISM
 ST1190 MYASTHENIA GRAVIS
 ST1189 WHAT IS MULTIPLE SCLEROSIS?
 ST1274 EMPHYSEMA
 ST1283 PEPTIC ULCERS
 ST1291 INFECTIOUS MONONUCLEOSIS
 ST1225 ARE YOU PROTECTED AGAINST POLIO?
 ST1183 IMMUNIZATIONS FOR TRAVEL
 ST1317 ENCEPHALITIS FROM MOSQUITOES
 ST1356 HEPATITIS
 ST1382 STREPT THROAT
 ST1393 WONDERING ABOUT EAR-PIERCING?

URINARY SYSTEM

ST1267 URINARY CATHETERIZATION
 ST1268 GOING HOME WITH A URINARY CATHETER?
 ST1009 BLADDER AND KIDNEY X-RAY (IVP)
 ST1272 WOMEN AND URINARY TRACT INFECTIONS
 ST1271 WHAT KIDNEYS DO FOR YOU
 ST1270 HOW TO PREVENT KIDNEY DISEASE
 ST1339 KIDNEY STONES
 ST1340 TREATMENT FOR KIDNEY STONES
 ST1260 WHEN IS THE ARTIFICIAL KIDNEY USED?
 ST1262 BEGINNING HEMODIALYSIS TREATMENTS?
 ST1261 HOME HEMODIALYSIS
 ST1240 KIDNEY TRANSPLANTATION IN WISCONSIN
 ST1195 SOCIAL SECURITY AND KIDNEY DISEASE

CANCER

ST1392 THE CANCER INFORMATION SERVICE
 ST1081 WHAT IS CANCER?
 ST1124 PROTECT YOURSELF AGAINST CANCER
 ST1307 CANCER OF THE HEAD AND NECK
 ST1315 HEAD AND NECK CANCER TREATMENT
 ST1309 POST-TREATMENT CARE OF CANCER OF THE HEAD AND NECK
 ST1126 CANCER OF THE MOUTH
 ST1122 CANCER OF THE LARYNX
 ST1169 HAVE YOU A CHRONIC COUGH?
 ST1125 CANCER OF THE LUNG
 ST1127 IS SMOKING REALLY DANGEROUS?
 ST1298 QUIT CIGARETTES - LIVE LONGER!
 ST1128 TIPS TO HELP YOU QUIT SMOKING
 ST1136 CANCER OF THE BREAST
 ST1120 BREAST SELF-EXAMINATION
 ST1306 TREATMENT OF BREAST CANCER
 ST1129 CANCER OF THE SKIN
 ST1301 CAN MOLES BECOME CANCEROUS?
 ST1130 CANCER OF THE STOMACH
 ST1123 CANCER OF THE COLON AND RECTUM
 ST1121 CANCER OF THE PROSTATE
 ST1304 DIAGNOSIS AND TREATMENT OF CANCER OF THE PROSTATE
 ST1403 TESTICULAR CANCER
 ST1131 CANCER OF THE UTERUS
 ST1133 WHAT IS LEUKEMIA?
 ST1134 LEUKEMIA TREATMENT
 ST1132 COULD MY CHILD HAVE CANCER?
 ST1284 WHAT IS HODGKIN'S DISEASE?
 ST1287 TREATMENT OF HODGKIN'S DISEASE
 ST1285 RESEARCH IN HODGKIN'S DISEASE
 ST1311 SELECTION OF CANCER TREATMENT
 ST1312 CANCER CHEMOTHERAPY
 ST1305 5-FU IN CANCER CHEMOTHERAPY
 ST1324 SIDE EFFECTS OF CHEMOTHERAPY
 ST1002 THE USE OF RADIATION THERAPY
 ST1308 HAVING RADIATION THERAPY?
 ST1323 SIDE EFFECTS OF RADIOTHERAPY
 ST1313 IMMUNOLOGY AND CANCER
 ST1290 MOTHERS, DAUGHTERS, AND D.E.S.
 ST1310 THE COLPOSCOPIC EXAMINATION
 ST1293 IS CANCER HEREDITARY?
 ST1303 CAN ESTROGEN THERAPY CAUSE CANCER?
 ST1135 THE SECRET CURE FOR CANCER

HEART AND BLOOD VESSELS

ST1080 UNDERSTANDING A HEART ATTACK
 ST1101 REGULAR HEART CHECKUPS
 ST1102 OBESITY
 ST1103 EXERCISE

ST1104 SMOKING
 ST1105 RHEUMATIC FEVER
 ST1106 STROKES
 ST1107 ATHEROSCLEROSIS
 ST1108 HIGH BLOOD PRESSURE
 ST1109 HOW TO STOP SMOKING
 ST1110 CHEST PAINS
 ST1111 CARDIOPULMONARY RESUSCITATION
 ST1112 DIET AND HEART DISEASE
 ST1088 WHAT IS HARDENING OF THE ARTERIES?
 ST1093 PREVENT HARDENING OF YOUR ARTERIES
 ST1113 PREVENTION OF HEART ATTACK
 ST1114 YOUR LEGS AND YOUR HEART
 ST1115 HEART BLOCK
 ST1116 DIGITALIS
 ST1117 DIABETES AND HEART DISEASE
 ST1042 FOOT CARE IF YOU HAVE DIABETES OR POOR CIRCULATION
 ST1118 FAINTING AND BLACKOUT SPELLS
 ST1119 HEART FAILURE
 ST1318 CARDIAC CATHETERIZATION

HIGH BLOOD PRESSURE

ST1273 IS HIGH BLOOD PRESSURE DANGEROUS?
 ST1280 CONTROLLING YOUR HYPERTENSION
 ST1281 HIGH BLOOD PRESSURE MEDICATION
 ST1282 QUESTIONS ABOUT HIGH BLOOD PRESSURE

ARTHRITIS

ST1361 WHAT IS ARTHRITIS?
 ST1359 OSTEOARTHRITIS: A CONVERSATION
 ST1362 RHEUMATOID ARTHRITIS
 ST1365 SYSTEMIC LUPUS ERYTHEMATOSUS (SLE)
 ST1357 WHAT IS ANKYLOSING SPONDYLITIS?
 ST1244 WHAT DO YOU KNOW ABOUT GOUT?
 ST1364 JUVENILE RHEUMATOID ARTHRITIS
 ST1380 UNDERSTANDING JUVENILE RHEUMATOID ARTHRITIS
 ST1363 A YOUNG PERSON TALKS OF ARTHRITIS
 ST1360 PARENTS DISCUSS ARTHRITIS
 ST1350 LIVING A FULL LIFE WITH ARTHRITIS
 ST1352 ARTHRITIS: WHY MAKE WORK EASIER?
 ST1353 ARTHRITIS: PRINCIPLES - EASIER WORK
 ST1354 ARTHRITIS: MORE ABOUT EASIER WORK
 ST1367 ASPIRIN AND ARTHRITIS
 ST1366 ARTHRITIS AND QUACK REMEDIES
 ST1358 IT'S JUST RHEUMATISM
 ST1351 YOU AND GOLD THERAPY
 ST1186 GOLD THERAPY PROCEDURE
 ST1223 ARTHRITIS IN CHILDREN
 ST1224 HELP FOR CHILDREN WITH ARTHRITIS

ABOUT YOUR EYES

ST1207 SOMETHING IN YOUR EYE?
 ST1221 WHAT ABOUT CATARACTS?
 ST1215 DO YOU KNOW IF YOU HAVE GLAUCOMA?
 ST1216 SHOULD I WEAR CONTACT LENSES?
 ST1278 EYE SYMPTOMS DEMANDING IMMEDIATE ATTENTION
 ST1286 FLOATING STRINGS IN YOUR EYE?
 ST1243 DO YOU HAVE DOUBLE VISION?

PHARMACY

ST1028 TAKING ANY MEDICINE?
 ST1007 MEDICINE - MORE IS NOT BETTER
 ST1035 RE-USING MEDICINES
 ST1383 ASPIRIN
 ST1387 SLEEPLESSNESS AND SLEEP INDUCERS
 ST1027 ORAL MEDICATION FOR DIABETES CONTROL
 ST1011 INSULIN FOR DIABETES CONTROL
 ST1036 SYRINGE USE FOR DIABETIC PATIENTS
 ST1010 CARDIAC DRUGS ARE VERY SPECIAL
 ST1026 ARE YOU TAKING ANTACIDS?
 ST1187 TAKING TRANQUILIZERS?
 ST1370 CORTISONE
 ST1389 DRUGS - GENERIC OR BRAND NAME?

ABOUT DRUGS

ST1068 A FRIEND IS ON A BAD TRIP
 ST1069 MARIJUANA - FABLES AND FACTS
 ST1085 WHAT ABOUT BARBITURATES?

ST1091 WHAT IS A DRUG?
 ST1144 THE U.W. DRUG INFORMATION CENTER
 ST1143 DRUG TREATMENT AND REFERRAL AGENCIES
 ST1090 THE WISCONSIN DRUG LAW
 ST1156 ALCOHOL IS A DRUG
 ST1220 ALCOHOL HURTS YOUR HEALTH
 ST1341 A.P.E.C. MEANS ALCOHOLISM TREATMENT
 ST1157 AMPHETAMINES
 ST1217 SOPORS AND QUAALUDES
 ST1226 LSD - A SHORT REPORT
 ST1326 COCAINE

FOOD AND DIET

ST1012 WHAT IS A 'NO ADDED SALT' DIET?
 ST1005 SEASONINGS AND THE LOW SALT DIET
 ST1025 DINING-OUT ON A LOW SODIUM DIET
 ST1013 SPECIAL DIETETIC FOODS?
 ST1302 DIETARY TREATMENT OF AN ULCER
 ST1292 THE LOW CHOLESTEROL DIET
 ST1078 THE BOTULISM STORY
 ST1153 WILL THE FOOD I SERVE CAUSE ILLNESS?
 ST1162 TIPS ON KEEPING FOOD SAFE
 ST1155 HAVE A WEIGHT PROBLEM?
 ST1164 SENSE AND NONSENSE ABOUT CALORIES
 ST1165 THE MAGIC FORMULA FOR WEIGHT LOSS
 ST1152 HEALTH FOODS AND FAD DIETS
 ST1151 ARE YOU A VEGETARIAN?
 ST1150 FOOD FOR HEALTH
 ST1384 NUTRITION DURING PREGNANCY
 ST1095 SHOULD MY FAMILY USE IODIZED SALT?
 ST1167 FOOD STAMPS

DENTAL

ST1263 PERIODONTAL DISEASE
 ST1264 ROOT CANAL TREATMENT
 ST1238 WATER FLUORIDATION - A PREVENTATIVE MEASURE
 ST1239 WATER FLUORIDATION - IS IT SAFE?
 ST1277 WHO CARES IF YOU BRUSH YOUR TEETH?
 ST1329 HOW TO CURE A TOOTHACHE
 ST1330 BLEEDING GUMS?
 ST1331 WORRIED ABOUT BAD BREATH?
 ST1332 SAVING ABSCESSSED TEETH
 ST1333 HOW IMPORTANT ARE BABY TEETH?
 ST1346 HAVE A BABY - LOSE A TOOTH?
 ST1334 DIET FOR A HEALTHY MOUTH
 ST1335 MISSING TEETH?
 ST1336 ABOUT DENTURES
 ST1337 DENTAL X-RAYS
 ST1338 PLAQUE ATTACK!

OF INTEREST TO WOMEN

ST1053 YOUR HYSTERECTOMY
 ST1056 HAVING A D & C ?
 ST1136 CANCER OF THE BREAST
 ST1120 BREAST SELF-EXAMINATION
 ST1306 TREATMENT OF BREAST CANCER
 ST1055 REHABILITATION FOR MASTECTOMY PATIENTS
 ST1276 VAGINAL INFECTIONS
 ST1272 WOMEN AND URINARY TRACT INFECTIONS
 ST1066 GONORRHEA AND WOMEN
 ST1159 WHAT IS THE RH FACTOR?
 ST1368 AMNIOCENTESIS
 ST1424 FETAL MONITORING
 ST1378 EMERGENCY CESAREAN SECTION
 ST1290 MOTHERS, DAUGHTERS, AND D.E.S.
 ST1310 THE COLPOSCOPIC EXAMINATION
 ST1160 MENOPAUSE PROBLEMS?
 ST1194 MENOPAUSE - QUESTIONS AND ANSWERS
 ST1265 BEFORE YOU BEGIN YOUR PREGNANCY

CONTRACEPTION AND UNWANTED PREGNANCY

ST1034 THE PILL IN PERSPECTIVE
 ST1043 THE PILL - QUESTIONS AND ANSWERS
 ST1044 THE PILL - MORE QUESTIONS

FROM HOSPITAL DIAL 9-263-3100

FOR PARENTS

ST1092 KEEPING CHILDREN HEALTHY IN WINTER
 ST1321 KEEPING CHILDREN HEALTHY IN SPRING
 ST1325 KEEPING CHILDREN HEALTHY IN SUMMER
 ST1096 KEEPING CHILDREN HEALTHY IN FALL
 ST1391 BLOCK PARENT - A HELPING HAND
 ST1385 NOURISHING SNACKS FOR LITTLE PEOPLE
 ST1158 WHAT SHOTS SHOULD MY CHILD HAVE?
 ST1214 COMMON INJURIES IN CHILDREN
 ST1192 MY CHILD HAS A BAD COLD
 ST1257 EARACHE IN CHILDREN
 ST1191 MY CHILD HAS A FEVER
 ST1213 MANAGEMENT OF VOMITING IN CHILDREN
 ST1211 DIARRHEA IN CHILDREN
 ST1206 WHAT TO DO ABOUT COLIC
 ST1200 YOUR CHILD AND SLEEP PROBLEMS
 ST1201 PREPARING YOUR CHILD FOR SLEEP
 ST1084 IMPETIGO TROUBLE?
 ST1288 PINWORMS?
 ST1218 SUDDEN INFANT DEATH SYNDROME (SIDS)
 ST1219 FOR PARENTS OF SIDS BABIES
 ST1222 YOUR CHILD....T.B.?
 ST1250 REYE'S SYNDROME
 ST1098 YOUR CHILD HAS DIABETES?
 ST1137 DIABETIC CAMP FOR YOUR CHILD?
 ST1132 COULD MY CHILD HAVE CANCER?
 ST1314 CANCER IN CHILDREN
 ST1133 WHAT IS LEUKEMIA?
 ST1134 LEUKEMIA TREATMENT
 ST1059 X-RAY AND YOUR CHILDREN
 ST1289 THE INFANT I.C.U.
 (INTENSIVE CARE UNIT)
 ST1251 WILL YOUR CHILD BE POISONED TODAY?
 ST1237 PLAY - WHY AND WITH WHAT?
 ST1373 LOSING YOUR COOL WITH YOUR CHILD?

FOR CHILDREN

ST1082 YOU'VE GOT CHICKENPOX?
 ST1094 SUE HAS RHEUMATIC FEVER
 ST1099 LINDA HAS DIABETES
 ST1100 JOE GOES TO DIABETIC CAMP
 ST1228 WHO NEEDS ACNE?
 ST1231 THE FRIENDLY WILD ANIMAL (4-8)
 ST1241 CHRIS CURIOUS GETS POISON IVY 7-11
 ST1246 CHRIS CURIOUS AND THE FIRE (7-11)
 ST1248 CHRIS CURIOUS AND HOME SAFETY 7-11
 ST1236 JAKE - THE IMPORTANT CHILD (4-8)
 ST1209 ARE YOU AFRAID? I'M AFRAID (4-8)
 ST1269 LOIS ALERT GOES SWIMMING (7-11)
 ST1374 THE YEAR SANTA ALMOST QUIT
 (AGES 3-7 TOY SAFETY)

SPECIAL SUBJECTS

ST1377 AN APPOINTMENT WITH YOUR PHYSICIAN
 ST1040 ILLNESS AND MARRIAGE PROBLEMS
 ST1075 A CHAPLAIN SPEAKS OF DISCOURAGEMENT
 ST1079 THINKING OF SUICIDE?
 ST1252 HELP IF YOU'RE THINKING OF SUICIDE
 ST1266 LIVING WITH AN ALCOHOLIC?
 ST1319 FACING LONELINESS WHEN YOU'RE OLDER
 ST1166 BEFORE YOU TAKE THE WHEEL
 ST1185 GIVE A LITTLE - BLOOD

MONEY MATTERS

ST1008 WHY HOSPITAL COSTS ARE RISING
 ST1018 YOU MAY QUALIFY FOR FINANCIAL AIDS
 ST1019 LET US FILE YOUR INSURANCE CLAIM
 ST1022 OUR BILLING PROCESS
 ST1021 WHO PAYS THE BILL?
 ST1049 WHAT ABOUT MEDICARE?
 ST1052 MEDICARE - QUESTIONS AND ANSWERS
 ST1048 SOCIAL SECURITY DISABILITY PAYMENTS
 ST1195 SOCIAL SECURITY AND KIDNEY DISEASE
 ST1196 ELIGIBILITY FOR MEDICARE
 ST1255 SUPPLEMENTAL SECURITY INCOME
 ST1355 PROFESSIONAL STANDARDS REVIEW ORGANIZATION (PSRO)

DELA CASA MARQUE 263-3100 DEL HOSPITAL MARQUE 9-263-3100

¿HABLA USTED ESPANOL?

¡Bienvenidos al Hospital Santas Marias! Usted, también, puede usar este servicio para los enfermos. Marque 9-263-3100 y pida a la telefonista el número de su selección. La telefonista le dirá, "Are you a patient?" Si usted es un enfermo en el hospital, déle el número de su cuarto. Si usted es enfermo de fuera del hospital, díglele "outpatient." Entonces, usted puede oír el mensaje. Su enfermera puede ayudarle en caso de necesidad. Gracias.

SALUD POR TELEFONO

ST1014S BIENVENIDOS AL HOSPITAL SANTAS MARIAS
ST1124S EL MODO DE PROTEGERSE CONTRA EL CANCER
ST1120S AUTOEXAMEN DE LOS SENOS
ST1270S LA PREVENCIÓN DE ENFERMEDADES RENALES
ST1280S SI USTED TIENE ALTA LA PRESIÓN DE SANGRE
ST1273S ¿CUALES SON LOS PELIGROS DE LA HIPERTENSION?
ST1298S DEJE LOS CIGARILLOS ¡VIVA MAS TIEMPO!
ST1140S LAS ENFERMEDADES VENEREAS
ST1153S ¿CAUSARA ENFERMEDADES LA COMIDA QUE SIRVO?
ST1162S EL MANEJO HIGIENICO DE LA COMIDA
ST1078S EL BOTULISMO
ST1034S LA PILDORA EN PERSPECTIVA
ST1043S LA PILDORA - PREGUNTAS Y RESPUESTAS
ST1044S LA PILDORA - MAS PREGUNTAS Y RESPUESTAS
ST1001S ¿QUE ES UN ELECTROCARDIOGRAMA?
ST1009S RADIOGRAFIAS DE LA VEJIGA Y LOS RINONES
ST1017S RADIOGRAFIA DEL HIGADO
ST1047S RADIOGRAFIAS DEL ESTOMAGO E INTestino DELGADO
ST1039S ¿QUE ES PROCTOSIGMOIDOSCOPIA?
ST1038S CIRUGIA - MITO Y REALIDAD
ST1146S LOS PIOJOS Y LAS LIENDRAS
ST1069S LA MARIGUANA - HECHOS Y MENTIRAS

HEALTH INFORMATION FOR YOU (FREE)

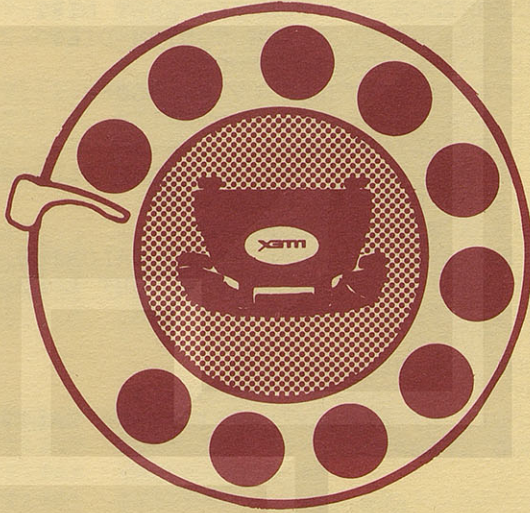
1. FOR AN INTRODUCTION TO THE HEALTH-LINE SERVICE
DIAL: FROM HOSPITAL 9-263-3100
FROM HOME 263-3100
ASK FOR TAPE NO. ST1440
2. SELECT TOPICS FROM LIST
3. DIAL AGAIN
4. TELL OPERATOR YOUR SELECTION NUMBER
5. LISTEN TO TAPE RECORDING
6. FOR REPEAT - HANG UP, THEN DIAL AGAIN



HEALTH-LINE



St. Marys Hospital
Medical Center



ACCESS TO THIS RESOURCE IS PROVIDED BY ST. MARYS HOSPITAL.
HEALTH-LINE IS A SERVICE OF THE UNIVERSITY OF WISCONSIN—MADISON CENTER FOR HEALTH SCIENCES
AND THE UNIVERSITY OF WISCONSIN—EXTENSION HEALTH SCIENCES UNIT, DEPARTMENT OF
CONTINUING MEDICAL EDUCATION.
MAY 1978



St. Marys new outdoor holiday decoration adds to the spirit of the Christmas season. The display was designed by Drake Partnership of St. Louis, Mo.

the summary sheet

DECEMBER 29, 1978
VOL. 5, NO. 6

St. Marys Hospital Medical Center • 707 South Mills Street • Madison, Wisconsin

Dietary Department Tackles Holiday Challenge

Christmas is a special time of the year for many people for many different reasons. And at St. Marys, there is one department that has a special role around the holidays to add to the fun and "special-ness" of the season.

The lovely aromas that come from St. Marys Dietary Department during the holiday season let each and every patient, employee, volunteer and visitor know that lots of time has gone into the planning and preparing of holiday meals at St. Marys.

"We want to give patients and employees a nice meal," said Sr. Maria Hinkebein, Director of the Dietary Department.

And give them a nice meal is just what the Dietary Department does!

For Christmas dinner, patients could choose an appetizer of cream of asparagus soup with bread stix, V-8 juice cocktail, or a lettuce wedge with dressing. The main entree was fillet mignon steak au jus, baked potato with sour cream and French cut green beans. Desert choices were a chilled fruit cut with

christmas cookies or strawberry cheesecake.

To dress up each patient's tray, a decorative cover is used to keep the food warm and festive holiday napkins are used. The St. Marys Auxiliary provides a fresh spring of holly for each tray to also spread good cheer.

Christmas dinner in the dining room, which was free of charge for on-duty employees, included appetizers of tomato-beef bouillon with crackers, cranberry juice cocktail or 24-hour fruit salad; and main entree of roast chicken, orange rice and gravy with mushrooms; vegetable choices of garden peas with pimentos or parsleyed cauliflower; and egg nog pie or Delicious apple for dessert.

Besides the meal planning for Christmas day, the two annual employee Christmas dinners are quite an undertaking for the Dietary Department. The menu planning and ordering of food begins weeks in advance to make sure there's enough for everyone.

This year's dinners, served by candle-

Christmas Decoration Adorns Hospital Front

The spirit of the holiday season is beautifully enhanced at St. Marys this year with the new outside Christmas decor just outside the hospital entrance on South Mills Street.

In striking white on a navy blue background, the 72-foot long structure displays a modern painting of the Virgin Mary and the baby Jesus under the Star of Bethlehem. To the right in white lettering appears the phrase "Behold A Child Is Born."

The simple yet eye-catching display was designed for St. Marys by Drake Partnership of St. Louis, Mo. The background for the structure was built and painted by Plant Department carpenters and painters. The entire display is comprised of 18 sheets of exterior plywood which are held in place atop the cement wall by 19 four by fours.

Jim Stanford, an artist with Drake Partnership, arrived at St. Marys the first week in December to paint the scene and phrase. The artwork was completed in three days.

The entire scene is lit during the evening hours --- a very beautiful site for all who see it.

light in a festively decorated Assembly Hall, featured prime rib and shrimp/lobster casserole along with relishes and rolls, three-bean salad, peas with pimentos and Apple á Vin for dessert.

"It's a lot of work," said Sr. Maria. But it's also well worth the effort to provide something special for the holidays.

Supervisor Named

Mrs. Eileen McKinley, N.M.R.T., has been named Radiology Department Supervisor.

A 1953 graduate of St. Marys School of Radiologic Technology, Mrs. McKinley joined the St. Marys staff in 1956. She most recently served as Nuclear Medicine Section Leader.

Mrs. McKinley, who is also educational coordinator for St. Marys School of Nuclear Medicine Technology, makes her home with her family at 2400 Lisa Lane in Madison.

Employees Feast and Fest



Chief Executive Officer Sr. Rebecca, Executive Director Gregory Griffin, at left, and Associate Executive Director Gerald Lefert, far right, present awards to Hilda Donnerbauer, left, Dietary, for 30 years of service; Mae Knobeck, center, Dietary, 25 years; and Mary Skenandore, ICU, 20 years at the Dec. 5 Christmas dinner.

Good fun and good cheer were first on the menu at the annual employee Christmas dinners this year—not to mention a delicious holiday feast prepared for all by the Dietary Department.

About 500 employees attended each of the traditional dinners held on Dec. 5 and 13. After a delectable dinner, Chief Executive Officer Sr. Rebecca and Executive Director Gregory Griffin presented employees with pins for 5, 10, 15, 20, 25 and 30 years of service to the hospital.

Employees who were unable to be present to receive their pins and who are therefore not pictured on these pages were: **25 years**—Pauline Quast, 3 Northwest; **20 years**—Edward Van Woelenderen, Plant; **15 years**—Bernice Hocking, Dietary; and Lillian Krauss, Laundry; **10 years**—Jane Adler, 2 West; Jacquelin Bradley, Lab; Linda Endres, Fiscal Services; Dolores Gilberts, 3 West; Faye Gohre, 1 South; Barbara Komoroske, CCU; Joyce McGinnity, Nursery; and Kathy Smith, Operating Suite;

5 years—Mary Bauer, SICU; Terrence Buckman, Housekeeping; Dean Buzzell, Plant; Harold Drea, Plant; Karen Eagon, 6 West; Sue Engelbaugh, Clinical Nurse Spe-



Receiving awards for 10 years of service to St. Marys at the Dec. 5 dinner are, front row left to right, Michel Bitney, Delivery Suite; Joan Zweifel, Library; Gertrude Sharpe, Housekeeping; Judy Belscamper, Nursing Service Supervisor; Bonnie Mueller, Assistant to the Director of Nursing Service; and Elizabeth Mindham, Medical Records. Back row left to right: Diana Faust, Material and Supply Services; Mary Ashley, Personnel; Helen Leary, 2 Northwest; Elizabeth Leuthner, Emergency Suite; Ernst Weise, Plant; Bonnie Thomas, Pediatrics; and Kathleen Serrahn, Operating Suite.

At right, Ann Scheler, Emergency Suite; Beverly Schaefer, 2 Northwest; Dorothy Schmook, 2 Northwest; Lorraine Kopke, Dietary; and Ronnie Walder, Delivery Suite, receive awards for 15 years of service to St. Marys.



Accepting awards for five years of service at the Dec. 5 dinner are: front row left to right, Mary Barefield, 5 West; Jill Schwarz, Occupational Therapy; Jean Pfaff, UR-CIR; Marie Burgus, Material and Supply Services; Jean Brantmeyer, 6 West; Lisa Simonson, Lab; Priscilla Mather, Lab; and Jean Lawson, Operating Suite. Back row left to right: Janis Oler, 1 Northwest; Diane Borchardt, UR-CIR; Marie Clementi, 1 Northwest; Josephine Rolfsmeier, Occupational Therapy; Gordon Thrun, Housekeeping; JoAnne Smith, C.C.U.; Myrtle Lehnertz, Nursery; Dana Meixl, Nursery; Fr. Thomas Kuehn, Pastoral Care; Judy Heidel, Administration; Caryl Seery, 2 Northwest; Margaret Sprecher, 6 West; Nancy Holt, P.A.R.; Lorraine Zinck, Pediatrics; Diana Studnicka, Operating Suite; Nancy Topp, Dietary; Amos Colby, Pharmacy; and Sibyl Carmichael, Medical Records.



at Christmas Dinners

cialist; Anne Faulhaber, Pediatrics; Patricia Feiner, Operating Suite; Susan Frackman, Respiratory Therapy; Judy Geishirt, Lab; Laurie Glowac, Administration; Colleen Hazard, 3 West; Karl Hesse, Operating Suite; John Kosanovich, Hospital Information Systems and Services; Kerry Laper, CCU; Mark McDermott, Dietary; Christine Meicher, 3 West; Jeanne Mentzer, 3 North; Laveda Morgan, Housekeeping;

Marlene Murphy, 3 North; Philip Murray, Dietary; Pamela Pitman, Delivery Suite; Sharon Ponsolle, 3 West; Victoria Rowe, ICU; Lois Sater, Lab; Susan Schmelzer, SICU; Philip Slotten, Plant; Kathy Wehrle, ICU; Lillian Weston, Housekeeping; Kathleen Williams, Business Services; and Juanita Zitnick, Nursery.

The New College Singers from Madison Area Technical College provided lively song and dance entertainment for each of the dinners, ending their show by leading everyone in singing "Joy to the World," "Deck the Halls With Boughs of Holly" and "Silent Night."



Several employees were honored for 20 and 25 years of service at the Dec. 13 dinner. Sr. Rebecca, left, Gregory Griffin and Gerald Lefert, right, make presentations to, left to right, Clara Franklin, Dietary, 20 years; Lorraine Caruso, 2 Northwest, 20 years; Margaret Booth, 2 West, 20 years; and Mary Hayter, Nursery, 25 years.



At the left, five employees are recognized for 15 years of service at the Dec. 13 dinner. They are, left to right, Irene Voss, 1 Northwest; Geraldine Boden, Physical Therapy; Tom Rounds, Material and Supply Services; Marian Hanneman, 3 North; and LaVilla Weiss, Lab.

Above, 15 employees are honored for 10 years of service to St. Marys on the same evening. They are, front row, left to right: Monica Gobel, 5 West; Virginia Frankey, Delivery Suite; Barbara Hruska, Lab; Kathleen Lightbourn, Pediatrics; Marjorie Steele, Pediatrics; and Rose Mary Johnson, Operating Suite. Back row left to right: Patricia Engbring, 6 West; Elaine Rattunde, 5 West; Jean Odden, Nursery; Phyllis Jagelski, SICU; Mary Kurth, SICU; Mary Muldowney, 2 West; Josephine Vilbrandt, Business Services; Delaine Chisman, Laundry; and Jacquellin Bradley, Lab.



Receiving recognition for five years of service to St. Marys at the Dec. 13 dinner are, front row left to right: Mary Noon, 3 Northwest; Carol Noel, 3 Northwest; Brian Butner, Housekeeping; Tamara Davis, 2 West; Joanne Petkovsek, Lab; Paul MacDonald, Plant; Kathleen Mugan, Lab; Alver Fleury, Material and Supply Services; and Marilyn Jarlsberg, Pediatrics. Back row left to right: Judy Johnsrud, 2 Northwest; Rose Kottwitz, 3 Northwest; Mary Titley, 2 Northwest; Joanne Terhall, Neonatology; Dan Leary, Housekeeping; Jane Harpold, 6 West; John Hanson, Plant; Ruth Winn, 3 North; Barb Nahin, Lab; Paul Kerr, Plant; Gloria Luetkens, Hospital Information Systems and Services; and Debbie Hartwig, Cardiac Services.

Volleyball Season Reaches Halfway Mark

With the first half of the volleyball season completed, members of St. Marys Volleyball League are enjoying a holiday break and looking forward to the resumption of play on Jan. 15.

The Net Set leads the league after the first eight matches with 21 wins and 3 losses. In second place is the Spiking Sponges, 20-4, followed by Radiology 15-9, and Off the Wall, 14-10. The Six Setters are tied with the Neurons for fifth place with 13 wins and 11 losses.

The Crash Crowd takes sixth place, 11-13, with the Diet Delights and the Stone & Bones tied for seventh place at 9-15. The Volley Vultures are tied with the Electric Co. at 7-17, and the Insecurity takes ninth place with 5-19.

Play will begin again on Jan. 15 at Our Lady Queen of Peace Grade School and continue every Thursday through Apr. 12. The season will conclude with a single-elimination tournament in which all teams will be eligible to participate.

News in Brief

OPERATING SUITE. **Betty Feldt** spent a week in Texas visiting relatives and doing some shopping.

AUXILIARY. **Fritz Setzkorn** was elected president-elect of the Wisconsin Association of Directors of Volunteer Services. He has also received the Advanced Safety Certificate from the National Safety Council.

P.A.R. Kevin and **Mary Retelle** became the proud parents of a baby girl, Katie Marie, on Dec. 5.

EXERCISE PHYSIOLOGY. **Paul Nast** participated in the Sugar River Trail Marathon run in late October.

PURCHASING. On Nov. 30, **Tim** and **Mary Verberkmoes**, 6 West, had an 8 pound 3 ounce bouncing baby girl. They named her Kathryn Mary.

LAB. The Lab Christmas party was held Dec. 2 at the Rennebohm Regency Room. **Janet Wenger** and husband had a baby boy, James Delbert, on Nov. 28. **Robert Archibald** and his wife, Carrie, became the parents of a baby boy, Geoffrey in November.

SPECIAL SERVICES. **Jean Jagelski** and husband spent two weeks in Hawaii.

LAUNDRY. **Karen Booth** became engaged to Kenneth Pulvermacher. An October, 1979, wedding is planned. **Maria Rodriguez** spent five days in San Francisco visiting her sister. **Alex Contreras** spent his vacation visiting his family in Texas.

3 NORTH. **Pat Lynam** was surprised by her husband, Don, with a weekend

Promotions, & Transfers Announced

Recent promotions and transfers at St. Marys Hospital Medical Center include the following:

Karen Whitsitt of Business Services is now working as a Patient Accounts Representative after serving as a Switchboard Operator.

Having completed the Medical Technology program at the University of Wisconsin, **April Carroll** is now a Medical Technologist in Laboratory. She formerly served as a Laboratory Assistant.

In Business Services, **Christine Brown** is now Lead Switchboard Operator after serving as a Switchboard Operator.

Formerly Receiving Clerk in Purchasing, **Timothy Gavin** is working as a Painter in Plant.

Judy Lowry-Boylan is now serving as a Patient Accounts Representative after working as Lead Switchboard Operator in Business Services.

In Administration, **Peggy Hocum** is working as Medical Education secretary as well as continuing her duties as Environmental Coordinator.

Mary Sutton has been named Head Nurse on Two West after serving as a nurse on that unit and as Nursing Service Supervisor.

Formerly a Nursing Assistant on One

Northwest, **Jim Johnson** is now Unit Clerk on that unit.

In Housekeeping, **Jim Vanden Brook** has been named Operating Suite Team Leader after serving as a Custodian.

After completing the Licensed Practical Nursing program at Madison Area Technical College, **Ann Hippe**, formerly Unit Clerk on Six West, is now working as a LPN on One Northwest.

Loretta McCord is now Unit Clerk on Three Northwest after serving as a Nursing Assistant on that unit.

On Two West, **Tamara Davis** is working as Unit Clerk after serving as a Nursing Assistant.

Formerly a Nursing Assistant in the Newborn Nursery, **Sandy Switlick** is now Laboratory Secretary.

Having completed the nursing program at the University of Wisconsin, **Mary Jackson** is now a nurse on Three North after serving as a Nursing Assistant on Five West.

Formerly Social Service Assistant, **Carol Morgan** is now Employment Interviewer in Personnel.

In Medical Records, **Sue Kuehne** is now a Medical Audit technician after serving as a Technician I.

in the Bahamas to celebrate their first anniversary. **Mary Jackson** was recently engaged and is planning a late spring wedding. **Jeanne Mentzer** is also newly engaged, and is planning to move to California.

HOSPITAL INFORMATION SYSTEMS AND SERVICES. Steve and **Peggy Krueger** are the proud parents of a baby boy, Brian Matthew, born on Nov. 2. He weighed in at 7 pounds 15 ounces. **Mary O'Malley** became Mrs. David Digney on Dec. 1 at 7:00 p.m. at St. Bernard's Church, Madison. They honeymooned in Tampa Bay, Fla., for a week. **Mary Lisi** flew to Las Vegas on Nov. 9 for four days. **Bonnie Sommers** spent Thanksgiving weekend in her hometown of Detroit. **Gloria Luetkens** went with friends to Notre Dame on Dec. 8 to cheer on the Badger Hockey team.

RADIOLOGY. **Ann Becker** spent two weeks vacationing in Maryland and New Jersey. **Gary Heintz**, **Judy Zander**, **Donna Thorsen** and **Mike Anselmo** attended the Radiologic Society of North America meeting in Chicago at the McCormick Place.

PERSONNEL. **Connie Jelle** spent part of her week's vacation in the Twin Cities.

2 NORTHWEST. The 2 Northwest Christmas party was held at the Cuba Club on Dec. 12. **Barbara Dillabaugh** and family have moved to Georgia.

IICU. Howard and **Vera Pokorny** toured to Kansas City, Mo., for four

days to attend a convention. Tom and **Marijo Bunbury** spent two weeks in Hawaii.

DELIVERY SUITE. Bob and **Jean Felten** are the proud parents of a new baby girl, Laura Jean, born on Dec. 4 and weighing 7 pounds 4½ ounces. The Delivery Suite gave Dr. J. L. Dean a surprise goodbye party before he left for Sturgeon Bay. The dinner was at Rhodes Supper Club.

6 WEST. **Debbie Peterson** and husband, Mike, became the proud parents of their first child, a baby girl. Emily Jean was born Oct. 26 weighing 6 pounds 13 ounces and 20" in length. **Linda Weisensel** became Mrs. Roger Wilsey on Oct. 14. **Mary Witek** married **Greg Bauer (Pharmacy)** on Oct. 14. **Luanne Miller** and friends enjoyed a trip to Boston and surrounding areas.

CENTRAL SERVICE. **Rhonda Forbes** became engaged to William Heinrich over the Thanksgiving holiday.

PHARMACY. **Dick McIntosh's** twin daughters have taken employment in Muscoda as school teachers, replacing twins who had taught for 33 years there.

ADMINISTRATION. **Gerald Lefert** and wife, Charlotte, are the proud parents of a new baby girl, Katherine Frances, born on Dec. 9.

3 WEST. Paul and **Brenda Mueller** are the proud parents of their first child, Erin Leigh, born on Nov. 22. **Jim (Plant)** and **Chris Meicher** just returned from a vacation in Albuquerque, N.M. and North Pole, Col.



THE EDGEWATER

666 Wisconsin Ave., P.O. Box 490

Madison, Wisconsin 53701

Phone 1-608-256-9071

143 Air Conditioned Rooms with Color T.V. & Radio

160-Car Indoor Ramp

6 Banquet & Meeting Rooms: 30 to 650

The Admiralty & Rigadoon Dining Rooms

The Cove, Rigadoon & Holiday Cocktail Lounges

"The only thing we overlook is beautiful Lake Mendota"

ON THE LAKE - IN TOWN - AT THE CAMPUS

Pub. by Wollin Studios, Madison, WI 53703



8410-D

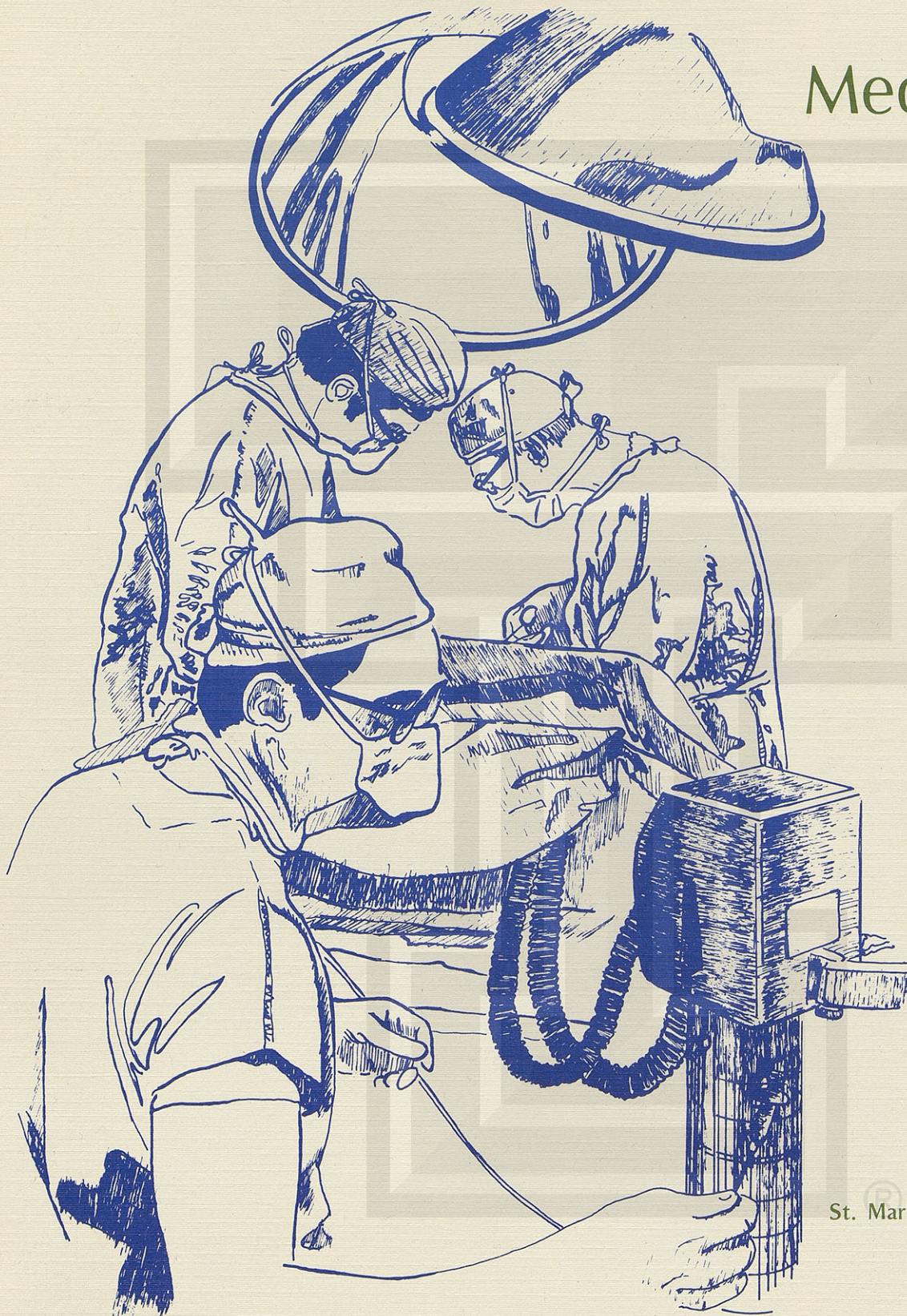
post card

dp

MADE BY
DEXTER PRESS
WEST NYACK, NEW YORK

St. Marys Hospital Medical Center

Medical Staff Directory 1978-79



St. Marys Hospital Medical Center
707 South Mills Street
Madison, Wisconsin 53715

608-251-6100

Medical Staff Offices Ext. 392 or 398

St. Marys Hospital Medical Center

Medical Staff Directory

St. Marys and its Medical Staff are dedicated to providing high quality service to patients in South Central Wisconsin. One important dimension of that professional commitment is consultative service to you for the medical care you provide for your patients. This directory of the physician professional staff is published to assist you in consulting with these doctors when you determine that their services may be needed in the treatment of your patient. Please feel free to call the members of our Medical Staff to discuss patient problems or to arrange appointments for consultation.

The Medical Staff and administrative offices are always available to provide assistance to you by calling 608-251-6100, extensions 392 or 398.

We hope this directory will be useful in enhancing the communications among personal physicians, patients, consulting physicians and hospital services in the interest of maintaining excellence in care.

Major Ambulatory Care Services at St. Marys

- E.K.G.—Electrocardiogram
- Cardiac Stress Testing
- Echocardiography
- S.T.A.R. Outpatient Psychiatric Program
- Diagnostic Radiology
- Nuclear Medicine — Ultrasound
- E.E.G.—Electro-encephalogram and Evoked Potentials Studies
- Laboratory
- Holter Monitor
- Respiratory Therapy
- Physical Therapy
- Occupational Therapy
- Speech Therapy
- Pacemaker Clinic
- OB Stress Testing
- Lamaze Classes
- Single Parent Prenatal Class
- Ostomy Clinic

608-251-6100, Ext. 651 and 652

Family Practice

Albright, J. G.	Office 241-4611 Home 271-4135
Barry, D. J.	Office 222-1501 Home 257-5463
Beasley, J. W.	Office 845-9531 Home 835-7703
Behrend, J. F.	Office 837-4521 Home 837-6449
Benish, G. A.	Office 256-5571 Home 251-6424
Bruce, C. A.	Office 221-1501 Home 233-1492
Budzak, K. S.	Office 252-8086
Cole, R. L.	Office 274-1100 Home 238-8563
Derus, G. J.	Office 222-3404 Home 222-1220
Donlin, W. F.	Office 424-3903 Home 424-3288
Fields, M.	Office 241-4611 Home 273-0485
Hecht, R. C.	Office 263-3091 Home 249-5201
Heggestad, K. A.	Office 221-1501 Home 221-1956
Heighway, T. F.	Office 836-1091 Home 831-7638
Hennen, R. J.	Office 241-4611 Home 222-5493
Kaske, E. T.	Office 222-3404 Home 222-7109
Liebl, E. R.	Office 233-4131 Home 233-5776
Lloyd, B. E.	Office 845-9531 Home 845-7962
Micke, B. F.	Office 274-1100 Home 255-4373
Moore, J. N.	Office 274-1100 Home 845-6258
Morton, L. J.	Office 241-4611
Nelson, E. J.	Office 837-5158 Home 837-6272
Neuhauser, C. A.	Office 241-4611 Home 222-7435
Oeth, D. A.	Office 274-1100 Home 274-3065
Patterson, J. J.	Office 263-3091 Home 231-2104

Anesthesia

Backs, M. F.	Office 257-6464 Home 238-3410	Kilpatrick, L. G.	Office 257-6464 Home 233-8972
Brill, J. J.	Office 257-6464 Home 233-4650	Lucia, G. E.	Office 257-6464 Home 231-1464
Burner, R. W.	Office 257-6464 Home 249-0855	Manhart, R. A.	Office 257-6464 Home 798-4432
Crennell, E. H.	Office 257-6464 Home 845-7955	McAleavy, J. C.	Office 257-6464 Home 836-3303
Grahek, A. S.	Office 257-6464 Home 222-8779	McClung, J. L.	Office 257-6464 Home 271-4318
Handa, Y.	Office 257-6464 Home 233-0219	Merkow, A. J.	Office 255-4573 Home 274-6628
Hirschler, C. W.	Office 257-6464	Mescher, T. J.	Office 257-6464 Home 845-6393
Hoff, A. D.	Office 257-6464 Home 233-7107	Noll, D. J.	Office 257-6464 Home 798-2342
Hogan, L. H.	Office 257-6464 Home 233-4889	Rapkin, M. A.	Office 257-6464 Home 233-7004
Jacobsen, P.M.	Office 257-6464 Home 845-8035	Waters, D. D.	Office 257-6464 Home 244-0254

Phelps, L. A.	Office 263-3111 Home 249-0591
Renner, J. H.	Office 263-4550 Home 251-8422
Russell, W. T.	Office 837-4521 Home 837-6145
Schmidt, M. H.	Office 837-4521 Home 655-3591
Shropshire, R. W.	Office 222-3404
Shultz, P. M.	Office 222-3404
Sternburg, J. K.	Office 263-3091 Home 251-2627
Walsh, E. J.	Office 249-8547 Home 222-3125
Walsh, L. G.	Office 249-8547 Home 244-2278
Warrick, J. D.	Office 263-3111 Home 831-6150
Washburn, W. L.	Office 274-1100 Home 233-8558
Weber, D. L.	Office 263-3091 Home 233-4526
Wertsch, P. A.	Office 221-1501 Home 221-1956

Internal Medicine

Armstrong, R. G.	Office 241-4611 Home 238-4810
Beilman, R. L.	Office 252-8030 Home 238-2235
Coryell, J. L.	Office 255-4294 Home 271-0892
Crowley, W. P.	Office 257-7107 Home 241-8878
Daugherty, D. A.	Office 252-8030 Home 233-5090
Farrell, R. X.	Office 252-8030 Home 233-6729
Gilbert, R. D.	Office 241-4611 Answering Service 257-7191
Harrington, J. T. Jr.	Office 252-8030 Home 271-8877
Hendricks, R. J.	Office 241-4611 Home 271-3098
Hetsko, C. M.	Office 252-8030 Home 251-3254
Kopp, W. L.	Office 252-8030 Home 836-1487
Kosseff, A. L.	Office 252-8030 Home 271-9124
Liebl, E. R.	Office 233-4131 Home 233-5776
Rock, W.	Office 241-4611 Home 238-1700
Rose, J. W.	Office 252-8030 Home 233-9386
Ryder, E. K.	Office 252-8030 Home 249-3150

Scheckler, W. E.	Office 263-4550 Home 255-4615
Simenstad, P. O.	Office 252-8030 Home 238-9545

Allergy and Clinical Immunology

Kopp, W. L.	Office 252-8030 Home 836-1487
Quellette, J. J.	Office 257-7311 Home 231-1140

Cardiology

Barrett, K. M.	Office 241-4611 Home 238-5320
Danahy, D. T.	Office 252-8019 Home 831-5818
Henderson, R. R.	Office 252-8019
Logan, D. C.	Office 252-8019 Home 831-4548

Dermatology

Bertram, J. R.	Office 252-8101 Home 222-0213
McDonald, R. A.	Office 252-8101 Home 274-4490

Gastroenterology

Emslie, R. J.	Office 241-4611 Home 274-9394
Vander Meer, J. E.	Office 252-8030 Home 238-0641

Infectious Diseases

Scheckler, W. E.	Office 263-4550 Home 255-4615
------------------	----------------------------------

Neurology

Graebner, R. W.	Office 252-8040 Home 238-1566
Lubar, H. S.	Office 255-4826 Home 233-7543
Miley, C. E. III	Office 252-8040 Home 256-1379
Murphy, M. J.	Office 255-4826 Answering Service 257-7191
Peterson, W. G.	Office 255-4826 Home 271-4232
Tegtmeyer, G. F.	Office 255-4826 Home 238-0090

Oncology

Engeler, J. E. Jr.	Office 252-8040 Home 836-3695
Schroeder, J. M.	Office 257-0561 Home 222-4041

Rheumatology

Harrington, J. T. Jr.	Office 252-8133 Home 271-8877
-----------------------	----------------------------------

Neonatology

Contreras, E. A.	Office 251-6100, Ext. 255 Home 273-1724
Ebaugh, D. W.	Office 251-6100, Ext. 458 Home 222-6592
Meier, P.	Office 251-6100, Ext. 457 Home 831-3781
Reddy, R. R.	Office 251-6100, Ext. 283 Home 274-2429
Infant Intensive Care Unit	251-6150

Obstetrics and Gynecology

Anderson, J. M.	Office 257-4386 Home 233-2672
Beck, J. P.	Office 241-4611 Home 256-6676
Christmann, R. P.	Office 252-8160 Home 271-5891
Dean, J. L.	Office 252-8160 Home 255-1424
Goodman, W. M.	Office 252-8160 Home 273-0512
Mussey, W. C.	Office 252-8160 Home 233-9327
Roley, E. L.	Office 257-4386 Home 836-8965
Rudat, K. A.	Office 252-8160 Home 233-4030
Shay, G. W.	Office 241-4611 Home 274-3428
Siverhus, W. J.	Office 252-8160 Home 233-3493
Speichinger, J. P.	Office 257-4386 Home 836-7768

Pathology

Angevine, J. M.	Office 251-6100 Ext. 344 Home 238-2271
Bauman, B. J.	Office 251-6100 Ext. 344 Home 256-0703
Card, W. H.	Office 251-6100 Ext. 344 Home 831-0313
Chang, C. K.	Office 251-6100 Ext. 344 Home 836-1485
Connors, D. M.	Office 251-6100 Ext. 380 Home 251-3095

Pediatrics

Andringa, C. L.	Office 252-8080 Home 271-3828
Bartlett, W. H.	Office 252-8080 Home 238-1586
Dvorak, P. F.	Office 252-8080 Home 836-3428
Geppert, C. H.	Office 252-8080 Home 233-8616
Geppert, T. V.	Office 252-8080 Home 233-3357
Hansen, M. F.	Office 263-4550 Home 271-3388

Hopkins, C. E.	Office 252-8080 Home 249-6055
Osborn, S. L.	Office 241-4611 Home 836-9254
Nichol, K. P.	Office 252-8080
Torstenson, O. L.	Office 252-8080 Home 222-0419

Pediatric Hematology & Oncology

Dvorak, P. F.	Office 252-8080 Home 836-3428
---------------	----------------------------------

Psychiatry

Faris, J. W.	Office 274-0355 Home 271-5797
Koppa, J. F.	Office 255-0694 Home 249-8367
Linden, R. E.	Office 274-0355 Home 238-1412
Lubing, H. N.	Office 274-0355 Home 233-3060
Miezio, S.	Office 274-0355 Home 836-8969
Shapiro, R. B.	Office 274-0355 Home 238-5398
Smith, M. M.	Office 274-0355 Home 271-6600
Winston, F.	Office 271-5615 Home 238-4050

Child Psychiatry

Linden, R. E.	Office 274-0355 Home 238-1412
Miezio, S.	Office 274-0355 Home 836-8969
Shapiro, R. B.	Office 274-0355 Home 238-5398

Radiology

Ansusinha, T.	Office 255-4573 Home 271-6446
Colburn, R. M.	Office 255-4573 Home 836-9185
Curtin, M. J.	Office 255-4573 Home 257-1332
Dudiak, S.	Office 255-4573 Home 836-1953
Durnin, R. E.	Office 255-4573 Home 836-7887
Knezevic, I.	Office 255-4573 Home 836-8427
Lindgren, R. D.	Office 255-4573 Home 271-4494
Roggensack, G. F.	Office 255-4573 SMHMC 257-3627
Schea, S. C.	Office 233-9744 Home 836-7092

Nuclear Medicine

Ansusinha, T.	Office 255-4573 Home 271-6446
Knezevic, I.	Office 255-4573 Home 836-8427
Lindgren, R. D.	Office 255-4573 Home 271-4494

Pediatric Radiology

Durnin, R. E.	Office 255-4573 Home 836-7887
---------------	----------------------------------

Radiation Therapy

Schea, S. C.	Office 233-9744 Home 836-7092
--------------	----------------------------------

General Surgery

Bernhardt, L. C.	Office 252-8050 Home 222-3744
Botham, R. J.	Office 252-8050 Home 222-7112
Gutenberger, J. E.	Office 252-8050 Home 231-1041
McDermott, J. P.	Office 257-3753 Home 233-9050
Rahm, J. P.	Office 222-0122 Home 222-1546
Schulz, J. T.	Office 241-4611 Home 238-2334
Shannahan, J. M.	Office 252-8050 Home 271-2392
Skroch, E. E.	Office 241-4611 Home 222-2839
Steinmetz, G. P.	Office 252-8050 Home 238-9843
Tormey, T. W.	Office 256-5571 Home 233-3297
Wenger, R. D.	Office 241-4611 Home 831-6874

Neurosurgery

Bogdanowicz, W. M.	Office 252-8040 Home 238-7251
Langheim, W. E.	Office 257-4567 Home 238-3456
Peden, J. K.	Office 257-4567 Home 238-3458
Woodford, J. E.	Office 252-8040 Home 231-2252

Orthopedic Surgery

Baranowski, W.	Office 241-4611 Home 233-8384
Brodhead, W. T.	Office 252-8118 Home 238-1942
Hejden, J. D.	Office 257-3961 Home 233-4506
Maguire, C. D.	Office 252-8118 Home 836-3820
Pellegrino, E. A.	Office 252-8118 Home 274-1592
Plzak, G. J.	Office 252-8118 Home 233-9136
Rudy, R. C.	Office 252-8118 Home 831-9756
Vogt, G. H.	Office 257-3961 Home 839-4705
Wixson, R. C.	Office 257-3961 Home 233-6774

Otolaryngology

Dibble, P. A.	Office 252-8123 Home 271-6920
Donovan, S. T.	Office 252-8123 Home 271-2440
Donovan, T. J.	Office 252-8123 Home 271-6088
Mann, C. H.	Office 257-3696 Home 233-6204
McMillan, W. G.	Office 257-3696 Home 233-6286
Scott, J. K.	Office 257-3696 Home 238-6120

Pediatric Neurosurgery

Woodford, J. E.	Office 252-8040 Home 231-2252
-----------------	----------------------------------

Pediatric Surgery

Gutenberger, J. E.	Office 252-8050 Home 231-1041
--------------------	----------------------------------

Peripheral Vascular Surgery

Botham, R. J.	Office 252-8050 Home 222-7112
Skroch, E. E.	Office 241-4611 Home 222-2839

Plastic and Reconstructive Surgery

Davenport, G.	Office 257-2208 Home 271-2348
Hamacher, J. E.	Office 257-2208 Home 238-0657

Thoracic and Cardiovascular Surgery

Bernhardt, L. C.	Office 252-8050 Home 222-3744
Gutenberger, J. E.	Office 252-8050 Home 231-1041
Shannahan, J. M.	Office 252-8050 Home 271-2392
Steinmetz, G. P.	Office 252-8050 Home 238-9843

Urology

Greenberg, E. B.	Office 241-4611 Home 257-7985
Licklider, G. M.	Office 252-8040 Home 831-4644
Sonneland, A. M.	Office 252-8040 Home 249-1540
Waters, R. F.	Office 252-8040 Home 831-6972

Ophthalmology

Andrew, R. B.	Office 257-5422
Johnson, E. E.	Office 233-1901 Home 831-6894
Kadell, J. G.	Office 252-8062 Home 257-1423
Nahn, C. E.	Office 252-8010 Home 271-9139
Oosterhous, G. E.	Office 257-5422 Home 233-4931

ST. MARYS HOSPITAL MEDICAL CENTER
MADISON, WISCONSIN

ROSTER OF STANDING AND SPECIAL COMMITTEES
OF THE MEDICAL STAFF

Revised January 5, 1979

--February, 1978-----

EXECUTIVE COMMITTEE

- | | | |
|----------------------|----------------------------|---------------------------------|
| 1. Noll, D.J. | Chief of Staff | |
| 2. Dudiak, S. | Assistant Chief of Staff | |
| 3. Greenberg, E.B. | Secretary-Treasurer | |
| 4. Korbitz, R.F. | Dane County Representative | |
| 5. Connors, D.M. | Pathology | Bauman, B.J., Asst. Chairman |
| 6. Kopp, W.L. | Internal Medicine | Rose, J.W., Asst. Chairman |
| 7. Jacobsen, P.M. | Anesthesia | Mescher, T.J., Asst. Chairman |
| 8. Christmann, R.P. | Ob-Gyn | Anderson, J.M., Asst. Chairman |
| 9. Linden, R.E. | Psychiatry | Miezio, S., Asst. Chairman |
| 10. Heighway, T.F. | Family Practice | Neuhauser, C.A., Asst. Chairman |
| 11. Pellegrino, E.A. | Surgery | Nahn, C.E., Asst. Chairman |
| 12. Andringa, C.L. | Pediatrics | Osborn, S.L., Asst. Chairman |
| 13. Roggensack, G.F. | Radiology | Colburn, R.M., Asst. Chairman |

CREDENTIALS COMMITTEE

1. Dudiak, S., Chairman
2. Gutenberger, J.E., Asst. Chairman & Rep. to U.C.C.
3. Anderson, J.M.
4. Colburn, M.
5. Greenberg, E.B.
6. Mescher, T.J.
7. Miezio, S.
8. Nahn, C.E.
9. Neuhauser, C.A.
10. Osborn, S.L.
11. Rose, J.W.

EDUCATION COMMITTEE

1. Roggensack, G.F., Chairman
2. Hendricks, R.J., Asst. Chairman
3. Angevine, J.M.
4. Bartlett, W.H.
5. Bernhardt, L.C.
6. Christmann, R.P. G.W. Shay
7. Contreras, E.A.
8. Dibble, P.A.
9. Emslie, R.J.
10. Hetsko, C.M.
11. Koppa, J.F.
12. Maguire, C.D.
13. Moore, J.N.
14. Renner, J.H. L. Phelps
15. Rose, J.W.
16. Waters, R.F.

CARDIOVASCULAR LABORATORY COMMITTEE

1. Henderson, R.R., Chairman
2. Barrett, K.M.
3. Corliss, R.J.
4. Durnin, R.E.
5. Logan, D.C.

CARDIOVASCULAR SURGICAL COMMITTEE

1. Connors, D.M., Chairman
2. Steinmetz, G.P., Asst. Chairman
3. Barrett, K.M.
4. Bartlett, W.H.
5. Corliss, R.J.
6. Gutenberger, J.E.
7. Logan, D.C.
8. McAleavy, J.C.
9. Mescher, T.J.

CORONARY CARE COMMITTEE

1. Henderson, R.R., Chairman
2. Armstrong, R.G.
3. Barrett, K.M.
4. Beasley, J.W.
5. Kosseff, A.L.
6. Ryder, E.K.

EEG COMMITTEE

1. Graebner, R.W., Chairman
2. Bogdanowicz, W.M.
3. Geppert, C.H.
4. Gilbert, R.D.
5. Miley, C.E.
6. Tegtmeyer, G.F.

EKG COMMITTEE

1. Logan, D.C., Co-Chairman
2. Crowley, W.P., Co-Chairman
3. Hoffman, P.A.
4. Rock, W.

DEPARTMENT OF INTERNAL MEDICINE
PATIENT REVIEW COMMITTEE

1. Benish, G.A., Co-Chairman
2. Graebner, R.W., Co-Chairman
3. Ansusinha, T.
4. Card, W.H.

DEPARTMENT OF INTERNAL MEDICINE
PATIENT REVIEW COMMITTEE (Cont)

5. Emslie, R.J.
6. Hecht, R.C.
7. ~~Katz, J.D.~~ (resigned)
8. Logan, D.C.
9. Rock, W.
10. ~~Schockler, W.E.~~
11. Schulz, J.T.
12. VanderMeer, J.
13. Kopp, W., Dept. Chairman

DEPARTMENT OF OB-GYN
PATIENT REVIEW COMMITTEE

1. ~~Dean, J.L.~~, Chairman W.J. Siverhus
2. Angevine, J.M.
3. Beck, J.P.
4. Crennell, E.H.
5. Goodman, W.M.
6. ~~Hank, G.C.~~
7. Kaske, E.T.
8. Knezevic, I.
9. Speichinger, J.P.
10. Christmann, R.P., Dept. Chairman

DEPARTMENT OF PEDIATRICS
PATIENT REVIEW COMMITTEE

1. Hansen, M.F., Chairman
2. Albright, J.G.
3. Corliss, R.J.
4. ~~Durnin, R.E.~~ R.D. Lindgren
5. Dvorak, P.F.
6. Ebaugh, D.
7. Gutenberger, J.E.
8. Andringa, C.L., Dept. Chairman

DEPARTMENT OF PSYCHIATRY
PATIENT REVIEW COMMITTEE

1. Lubing, H.N., Chairman
2. Gilbert, R.D.
3. Miezio, S.
4. Miley, C.E.
5. Phelps, L.A.
6. Shapiro, R.B.
7. Linden, R.E., Dept. Chairman

STANDING & SPECIAL COMMITTEES OF THE MEDICAL STAFF

February, 1978

Page 3

ANESTHESIA PATIENT REVIEW COMMITTEE

1. Rapkin, M.A., Chairman
2. Backs, M.F.
3. Brill, J.J.
4. Burner, R.W.
5. Manhart, R.A.
6. McClung, J.L.
7. Mescher, T.J.
8. Jacobsen, P.M., Dept. Chairman

DEPARTMENT OF SURGERY PATIENT REVIEW COMMITTEE

1. Bernhardt, L.C., Chairman
2. Baranowski, W.
3. Bauman, B.J.
4. Brill, J.J.
5. Colburn, R.M.
6. Donovan, T.J.
7. Engeler, J.E.
8. Hetsko, C.M.
9. Licklider, G.M.
10. Rudy, R.
11. Wenger, R.D.
12. Woodford, J.E.
13. Pellegrino, E.A., Dept. Chairman

EMERGENCY SERVICE PATIENT REVIEW COMMITTEE

1. Bogdanowicz, W.M., Chairman
2. Bayuk, J.W.-----
3. Bernhardt, L.C.
4. Brodhead, W.T.
5. Crawford, W.C.---
6. Curtin, M.
7. Hamacher, J.E.-----
8. Hank, G.C.-----
9. Hendricks, R.J.
10. Kosseff, A.L.
11. Lloyd, B.E.
12. Nichol, K.P.
13. Rahm, J.P.
14. Schulz, J.T.
15. VanGenort, J.G.-----
16. Winston, F.

UTILIZATION REVIEW ADVISORY COMMITTEE

1. Benish, G.A.
2. Bernhardt, L.C.
3. Bogdanowicz, W.M.
4. Dean, J.L.
5. Graebner, R.W.
6. ~~Hank, G.C.-----~~
7. Hansen, M.F.
8. Lubing, H.N.

COMMITTEE ON ACCREDITATION

1. Botham, R.J., Co-Chairman
2. ~~Hank, G.C., Co-Chairman---~~
3. Derus, G.J.

DIET COMMITTEE

1. Daugherty, D.A., Chairman
2. Fields, M.
3. Torstenson, O.L.
4. VanderMeer, J.

DISASTER COMMITTEE

1. Highway, T., Chairman
2. Micke, B.F.
3. Rahm, J.P.
4. Warrick, J.D.

ENVIRONMENTAL & INFECTION CONTROL COMMITTEE

1. Scheckler, W.E., Chairman
2. Angevine, J.M.
3. Barry, D.J.
4. Hetsko, C.M.
5. Mussey, W.C.
6. Osborn, S.L.
7. Wenger, R.D.

INFANT INTENSIVE CARE COMMITTEE

1. Geppert, C.H., Chairman
2. Andringa, C.L.
3. Bartlett, W.H.
4. Beck, J.P.
5. Contreras, E.A.
6. Ebaugh, D.W.
7. Moore, J.N.
8. Reddy, R.R.
9. Roley, E.L.
10. Shay, G.W.

Marc Hansen
Primrose Meier

STANDING & SPECIAL COMMITTEES OF THE MEDICAL STAFF
February, 1978
Page 4

JOINT CONFERENCE COMMITTEE

1. Noll, D.J., Chairman
2. Derus, G.J.
3. Dudiak, S.
4. Botham, R.J., Advisory
5. Skroch, E.E., Advisory

LIBRARY COMMITTEE

1. Schulz, J.T., Chairman
2. Ansusinha, T.
3. Morton, L.J.
4. Plzak, G.J.

MEDICAL STAFF BYLAWS COMMITTEE

1. Smith, M.M., Chairman
2. Botham, R.J.
3. Hank, G.C.-----
4. Sonneland, A.M.

PATIENT CARE COMMITTEE

1. Waters, R.R., Chairman
2. Kaske, E.T., Asst. Chairman
3. Andringa, C.L.
4. McAleavy, J.C.
5. Miezio, S.
6. Roley, E.L.
7. Rose, J.W.

PHARMACY & THERAPEUTICS COMMITTEE

1. Gilbert, R.D., Chairman
2. Ebaugh, D.W.
3. Harrington, J.T.
4. Wenger, R.D.
5. Wertsch, P.A.

PHYSICAL THERAPY COMMITTEE

1. Baranowski, W., Chairman
2. Bogdanowicz, W.M.
3. Farrell, R.X.
4. Harrington, J.T.
5. Heiden, J.D.

RADIO-ISOTOPE COMMITTEE

1. Lindgren, R.D., Chairman
2. Ansusinha, T.
3. Bogdanowicz, W.M.
4. Connors, D.M.
5. Daugherty, D.A.
6. Engeler, J.E.

RESPIRATORY THERAPY COMMITTEE

1. Simenstad, P.O., Chairman
2. Rose, J.W., Asst. Chairman
3. Bernhardt, L.C.
4. Hopkins, C.E.
5. Merkow, A.J.

SOCIAL SERVICE ADVISORY COMMITTEE

1. Andringa, C.L., Chairman
2. Armstrong, R.G.
3. Kaske, E.T.

SURGICAL INTENSIVE CARE COMMITTEE

1. Bernhardt, L.C., Co-Chairman
2. Skroch, E.E., Co-Chairman
3. Brodhead, W.T.
4. Burner, R.W.
5. Danahy, D.T.
6. Gilbert, R.D.
7. Gutenberger, J.E.
8. Rudat, K.A.
9. Steinmetz, G.P.

SURGICAL SUITE COMMITTEE

1. Sonneland, A.M., Chairman
2. Brodhead, W.T.
3. Christmann, R.P.
4. Donovan, T.J.
5. Rapkin, M.A.
6. Schulz, J.T.
7. Steinmetz, G.P.

TUMOR BOARD

1. Engeler, J.E., Chairman
2. Bauman, B.J.
3. Dvorak, P.F.
4. Hamacher, J.E.
5. Knezevic, I.
6. Schea, C.S.
7. Schroeder, J.M.
8. Shannahan, J.M.

E.R. Liebl

OB-GYN PRIVILEGE REVIEW COMMITTEE

1. Beck, J.P., Chairman
2. Cole, R.L.
3. Hank, G.C.----- E.B. Greenberg
4. Siverhus, W.J. T.L. Mitchell
R.R. Love

STANDING & SPECIAL COMMITTEES OF THE MEDICAL STAFF
February, 1978
Page 5

LABORATORY AND BLOOD
TRANSFUSION COMMITTEE

1. Engeler, J.E., Chairman
2. Connors, D.M.
3. ~~Hank, G.C.~~-----
4. Manhart, R.A.
5. Ryder, E.K.
6. Shannahan, J.M.

PARAMEDIC E.M.T. CONTINUING
EDUCATION COMMITTEE

1. Bernhardt, L.C., Chairman
2. Benish, G.
3. Henderson, R.
4. Rahm, J.

MEDICAL STAFF ADVISORY COMMITTEE
CARDIAC REHABILITATION PROGRAM

1. R.R. Henderson, Chairman
2. R.J. Hendricks
3. K.M. Barrett
4. L.C. Bernhardt
5. J.J. Patterson



SYMPOSIUM PROGRAM

FRIDAY, NOVEMBER 10

- A.M.
- 7:45 Registration and Continental Breakfast
8:25 Welcome
I. Rheumatoid Arthritis, Osteoarthritis, and Rheumatoid Variants.
Moderator: J. T. Harrington, M.D.
8:30 Immunology of Rheumatoid Arthritis: Immune Mechanisms of Synovitis and Clues to a Genetic Predisposition
Morris Ziff, M.D.
8:15 Questions and Discussion
9:30 Inflammation in Rheumatoid Arthritis: A Rationale for Anti-Inflammatory Treatment
Ralph Snyderman, M.D.
10:15 Questions and Discussion
10:30 Coffee
10:45 **Workshop I: Diagnosis and Medical Management**
(case presentations, faculty comments, and discussion)
Drs. Ziff, Snyderman, Arnold, Colburn; Mrs. Graziano
1. Diagnosis of Rheumatoid Arthritis and Rheumatoid Variants - Clinical, Laboratory, and Radiologic Criteria
2. Drug Therapy of Rheumatoid Arthritis
Salicylates
Nonsteroidal Anti-Inflammatory Agents
Gold
Penicillamine
Corticosteroids
Cytotoxic Agents
New Agents - Oral Gold and Levamisole
3. Intra-Articular Steroids
4. Physical and Occupational Therapy in Conservative Management: Rest, Exercise, Heat and Joint Protection Techniques
5. Complications of Rheumatoid Arthritis: Recognition and treatment
Sjögren's Syndrome
Carpal and Tarsal Tunnel Syndromes

- Odontoid Subluxation
Pericarditis and Pleurisy
Neuropathy and Other Vasculitis
12:15 Lunch - St. Marys Hospital Medical Center
- P.M.
- II. Rheumatoid and Osteoarthritis**
Moderator: E. A. Pellegrino, M.D.
1:30 Cartilage and Joint Destruction in Rheumatoid and Osteoarthritis
E. D. Harris, M.D.
2:15 Questions and Discussion
2:30 Current Status of Total Joint Replacement
R. Fitzgerald, M.D.
3:15 Questions and Discussion
3:30 Coffee
3:45 **Workshop II: Management of Destructive Rheumatoid and Osteoarthritis**
(case presentations, faculty comments, and discussion)
Drs. Fitzgerald, Harris, Colburn; Ms. Lueders
1. Role of Synovectomy in Preventing Rheumatoid Joint Destruction
2. Conservative Treatment of Osteoarthritis with Drugs and Physical Therapy
3. Indications for Surgery in Rheumatoid and Osteoarthritis: Example Cases with Clinical and Radiologic Findings
4. Functional Splinting to Retard and Correct Rheumatoid Deformity
5:15 Adjournment
- Evening Cocktail Buffet: The Madison Club 7:00 P.M.**

SATURDAY, NOVEMBER 11

- A.M.
- 7:30 Continental Breakfast
III. Diagnosis and Management of Acute Arthritis: Gout, Pseudogout and Infectious Arthritis
Moderator: W. O. Baranowski, M.D.

- 8:00 Clinical Presentations and Disease Mechanisms of Gout and Pseudogout (Crystal-Induced Arthritis)
D. McCarty, M.D.
8:45 Questions and Discussion
9:00 Synovial Fluid Analysis: A Key to Diagnosis
William Arnold, M.D.
9:30 Coffee
9:45 **Concurrent Workshops**
A. Diagnosis and Treatment of Acute Arthritis
(case presentations, faculty comments, and discussion)
Drs. McCarty, Arnold, Harris, Colburn
1. Differential Diagnostic Clues - Clinical, Laboratory and Radiologic
2. Anti-Inflammatory Therapy of Acute Gout and Pseudogout
3. Indications for Prophylactic Colchicine and Treatment of Hyperuricemia in Long-Term Gout Therapy
4. Problem Cases:
Post Operative Gout and Pseudogout
Uric Acid Stone Formers
Diuretic Induced Hyperuricemia
B. The Holistic Approach: Coordinating Medical, Physical, and Occupational Therapy in a New Context
Diane Lueders, M.S., O.T.R., Mary Jon Hauge, P.T., Becky Black, O.T.R.
1. Multidisciplinary Physical and Psychosocial Evaluation
2. Therapeutic Intervention
3. Patient Education in Preventative Techniques:
Splinting, Energy Conservation; Joint Protection, and the Balance of Rest and Exercise
4. The Patient's Choice: Taking Responsibility for Life Style adjustment
11:00 Adjournment

Medical Alumni Luncheon and Homecoming Football Game (optional)

HOMECOMING FOOTBALL ARTHRITIS SYMPOSIUM NOVEMBER 10-11, 1978

FOOTBALL TICKETS: Saturday, November 11, 1978: Homecoming -- Wisconsin vs. Purdue. Conference participants are invited to join the Wisconsin Medical Alumni Association for lunch and then the Homecoming football game between the Wisconsin Badgers and the Purdue Boilermakers. Transportation to the luncheon and then to the game will be provided. The package of one football ticket and one luncheon ticket will cost \$13.00. Tickets will be available for pick-up during the alumni luncheon. Please fill out the attached form and return to the Wisconsin Medical Alumni Association. **DO NOT SEND THIS FORM WITH YOUR REGISTRATION FOR THE CONFERENCE.**

Please send me 1 2 (circle one) tickets for the Wisconsin Medical Alumni Association luncheon and Wisconsin-Purdue football game. Enclosed is \$ _____ (\$13.00 for the package of one luncheon ticket and one football ticket -- limit of two packages per participant). Please note that tickets will not be sent to you. Tickets may be picked up during the Medical Alumni luncheon.

NAME _____
ADDRESS _____
CITY _____
STATE _____ ZIP _____

Make checks payable to the Wisconsin Medical Alumni Association and mail with this form to: Medical Alumni Association, 758 WARF Building, 610 North Walnut Street, Madison, WI 53706.



UW-Extension provides equal opportunities in employment and programming including Title IX requirements.

REGISTRATION FORM

ARTHRITIS SYMPOSIUM -- NOVEMBER 10-11, 1978

☐ Yes! Please register me for the "Arthritis: Diagnosis and Treatment" Symposium to be held at St. Marys Hospital Medical Center.
Enclosed is \$ _____ to cover: _____ Physician Registration Fee (\$55.00) _____ Medical Students and Allied Health Professionals Registration Fee (\$35.00)

On Saturday morning, I will attend the following workshop (choose one):
____ Diagnosis and Treatment of Acute Arthritis
____ The Holistic Approach: Coordinating Medical, Physical and Occupational Therapy in a New Context

NAME _____ SPECIALTY _____
ADDRESS _____ STATE _____ CITY _____ ZIP _____
PHONE: A.C. (_____) _____ SOCIAL SECURITY NO.* _____
*Providing your Social Security Number is voluntary. It will be used only to identify and maintain your record of course completion.

Please make checks payable to Arthritis Symposium and mail with this form to:
CME Coordinator
The Wisconsin Center
702 Langdon Street
Madison, WI 53706