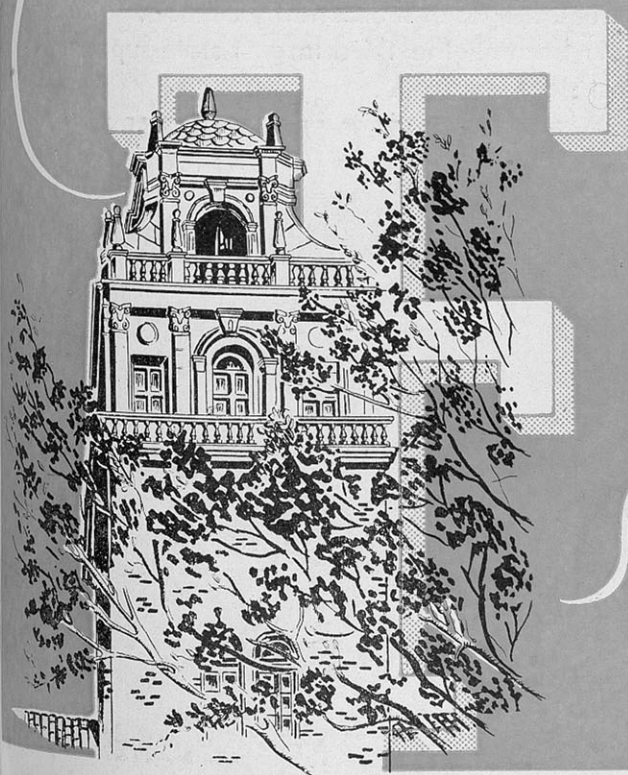


N.Y. Storage

TALL TALE

FROM WEST TEXAS
AND ITS PROOF!

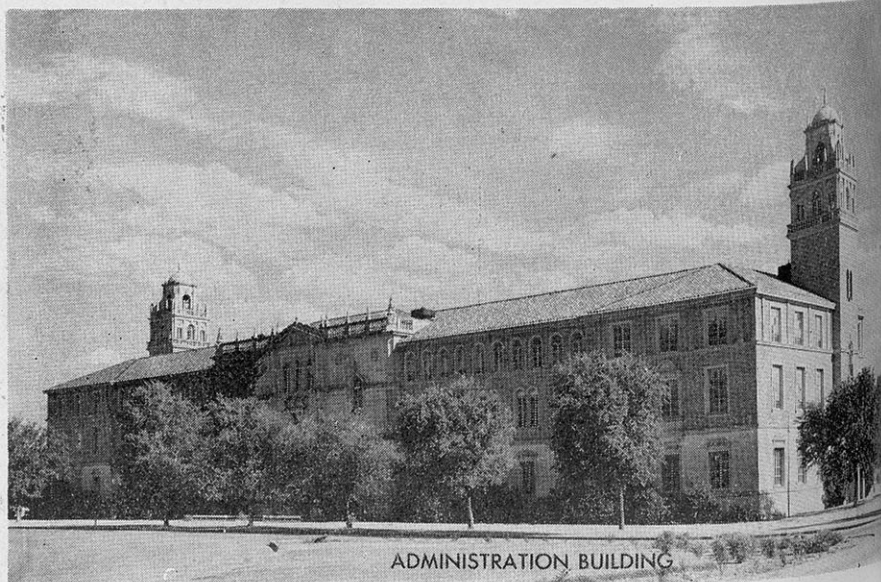


TEXAS TECH...

ENTRANCE TO TEXTILE BUILDING

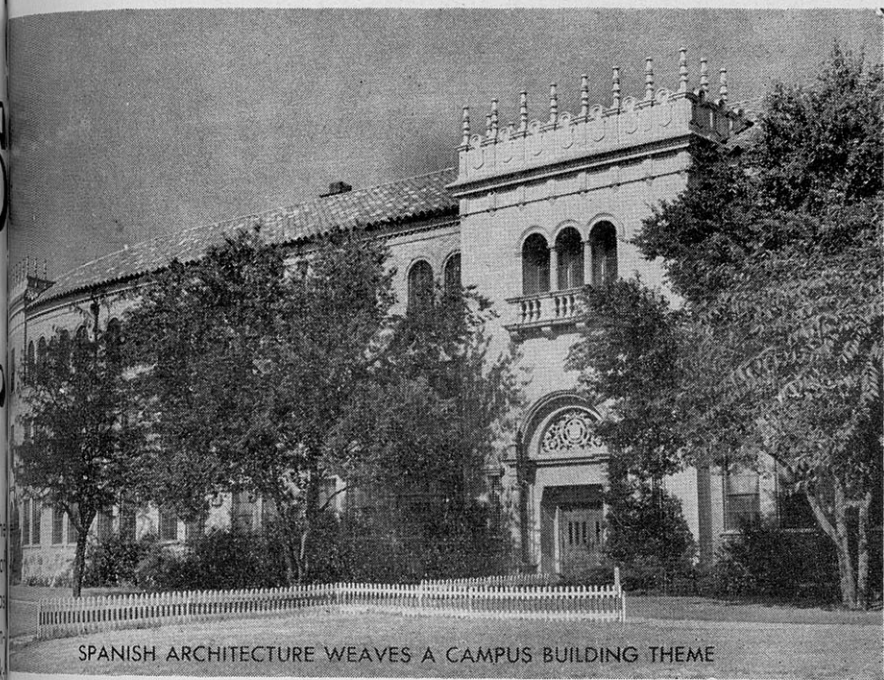
A giant is stirring on the high Plains of Texas! This Paul Bunyon of the West is a powerful force in the educational, moral, and athletic picture of the nation. It is a Texan's dream of all that's big and bustling. It is Texas Technological College, in Lubbock. Texas Tech, the college with an enchanted campus, electrified by the spirit of growth and progress, has taken massive strides toward maturity since its opening October 1, 1925. It is fully approved by the Association of American Universities and the Southern Association of Colleges and Secondary Schools. In twenty-three short years, Tech has become the third largest state-supported college in the nation's largest state.

THIRD IN TWENTY-THREE



ADMINISTRATION BUILDING

S
00
yon of the
picture of
It is Texas
with an en
ss, has tak
1, 1925.
and the
enty-thre
ed colleg
E



SPANISH ARCHITECTURE WEAVES A CAMPUS BUILDING THEME

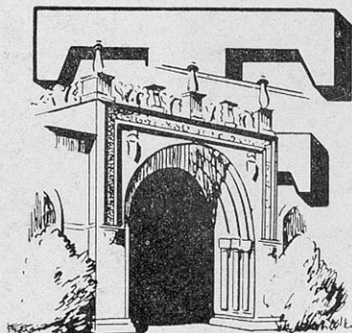
Putting it a Texan's way, "Texas Tech is as big as all get-out!" During the coming long term, over 6,500 students from across the nation will enroll in its many agriculture, arts and science, business administration, engineering, home economics, and graduate courses. There is a great will to work, to compete, to win at Tech, tempered with a spirit of fair play.

Wherever its scarlet and black colors have gone, there Texas Tech has fought well, won much. You can be proud of Tech . . . it's YOUR school.

TEXAS TITAN



ENTRANCE TO LIBRARY



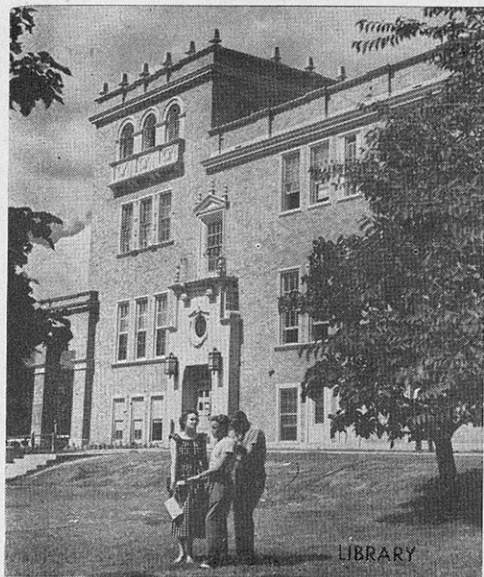
ENTRANCE TO ENGINEERING BUILDING

TALK ABOUT A BUILDING BOOM

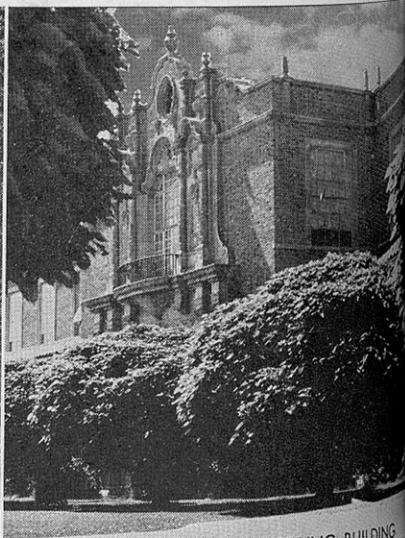
MORE THAN FIVE TIMES THE BUILDINGS

Following its creation by the 38th Legislature, Texas Tech's first long building began on October 1, 1925. Then there were only 6 major buildings on the vast 320 acre campus, into which 910 loyal students crowded for learning. Today, there are more than five times that many major buildings, and seven times the original number of students. 33 permanent buildings are devoted to every type of college activity, and housing a city of over 6000 men and women. You say YOU'RE surprised . . . imagine how we Texans feel as we see with our own eyes this apparently unending growth.

MORE THAN SEVEN TIMES THE STUDENTS



LIBRARY



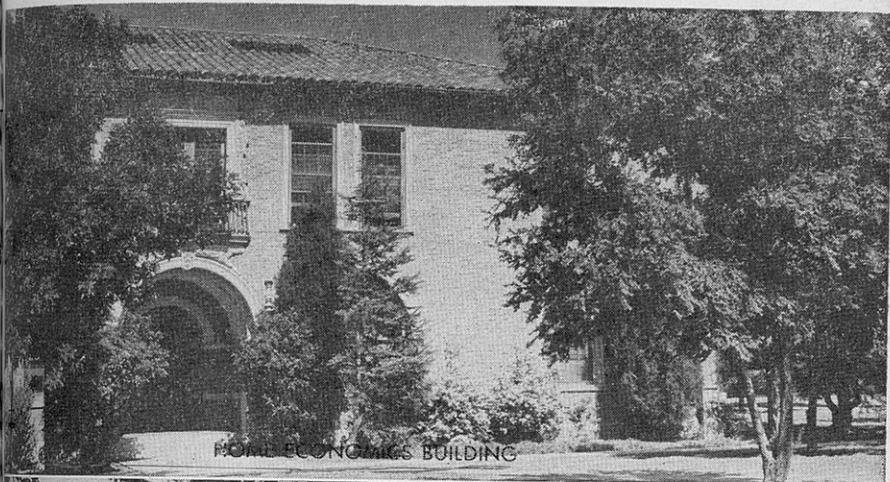
TEXTILE ENGINEERING BUILDING

DU
300

BUILDING

first long
buildings
d for learn
buildings
buildings
of over
how we
ding gro
UDENT

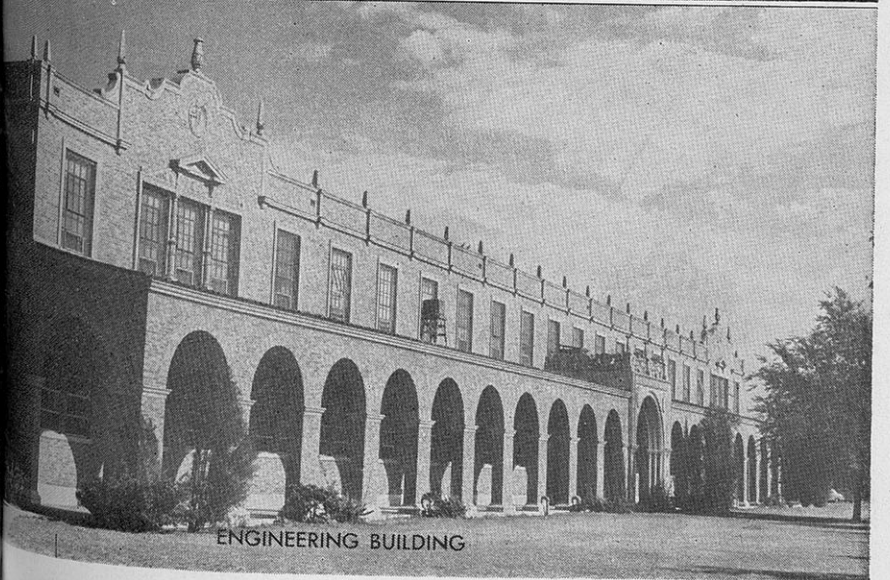
BUILDING



HOME ECONOMICS BUILDING



AGRICULTURAL BUILDING

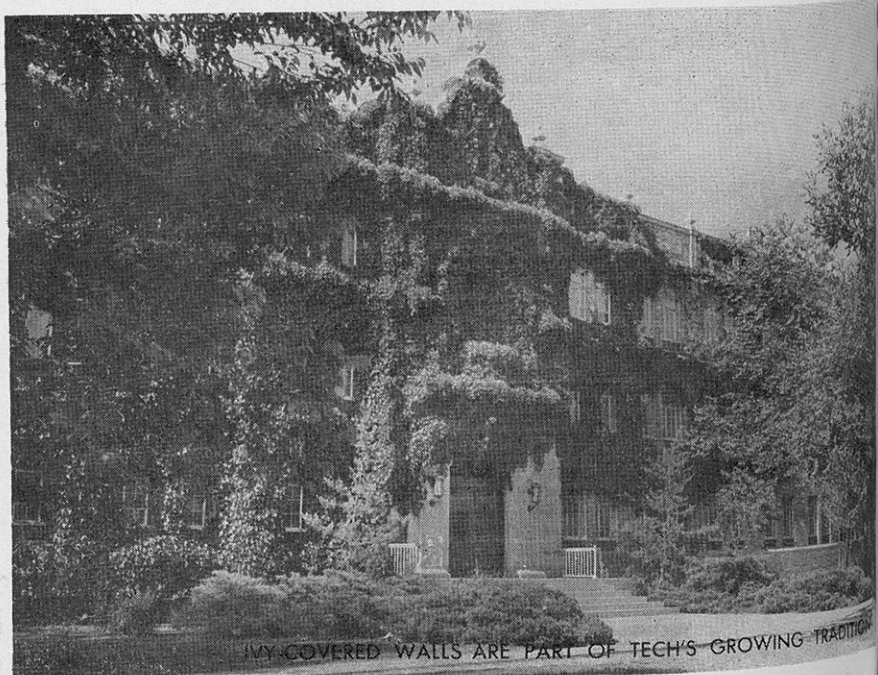


ENGINEERING BUILDING

TECH'S GROWTH IS CONTAGIOUS

ENTRANCE TO DRANE HALL

Here is an interesting quote from the first Annual Catalogue published by Texas Tech: "The College is located at Lubbock, a rapidly growing little city of approximately 15,000 inhabitants." If you've not visited Double T land for several years, you will be amazed to know that reliable sources place Greater Lubbock's 1948 population at more than 72,000! Other West Texas communities which contribute their young men and women to Texas Tech have caught this same power to grow!



IVY-COVERED WALLS ARE PART OF TECH'S GROWING TRADITION

Agri
Agriculture
Agriculture
Animal
Dairy
Plant
Engin
Archite
Chemis
Civil E
Electri
Industr
En
Mechan
Petrole
Textile
Milita
Anc
(ROTC)
Basic
Air Fo
Engine
Infantr
Signal
Home
Applie
Child
Fo
Clothin
Foods
Home
Home
Institut

ORGANIZATION

OF THE COLLEGE BY DIVISIONS

TO ADMINISTRATION BUILDING

Agriculture--

Agricultural Economics
Agricultural Education
Animal Husbandry
Dairy Manufactures
Plant Industry

Engineering--

Architecture
Chemical Engineering
Civil Engineering
Electrical Engineering
Industrial Engineering and
Engineering Drawing
Mechanical Engineering
Petroleum Engineering
Textile Engineering

Military Science And Tactics

(ROTC)
Basic and Advanced
Air Force
Engineering
Infantry
Signal Corps

Home Economics--

Applied Arts
Child Development and
Family Relations
Clothing and Textiles
Foods and Nutrition
Home Economics Education
Home Management
Institutional Management

Graduate--

Master of Arts
Master of Science
Master of Education
Master of Business Administration
Professional Degrees in
Engineering

Arts and Sciences--

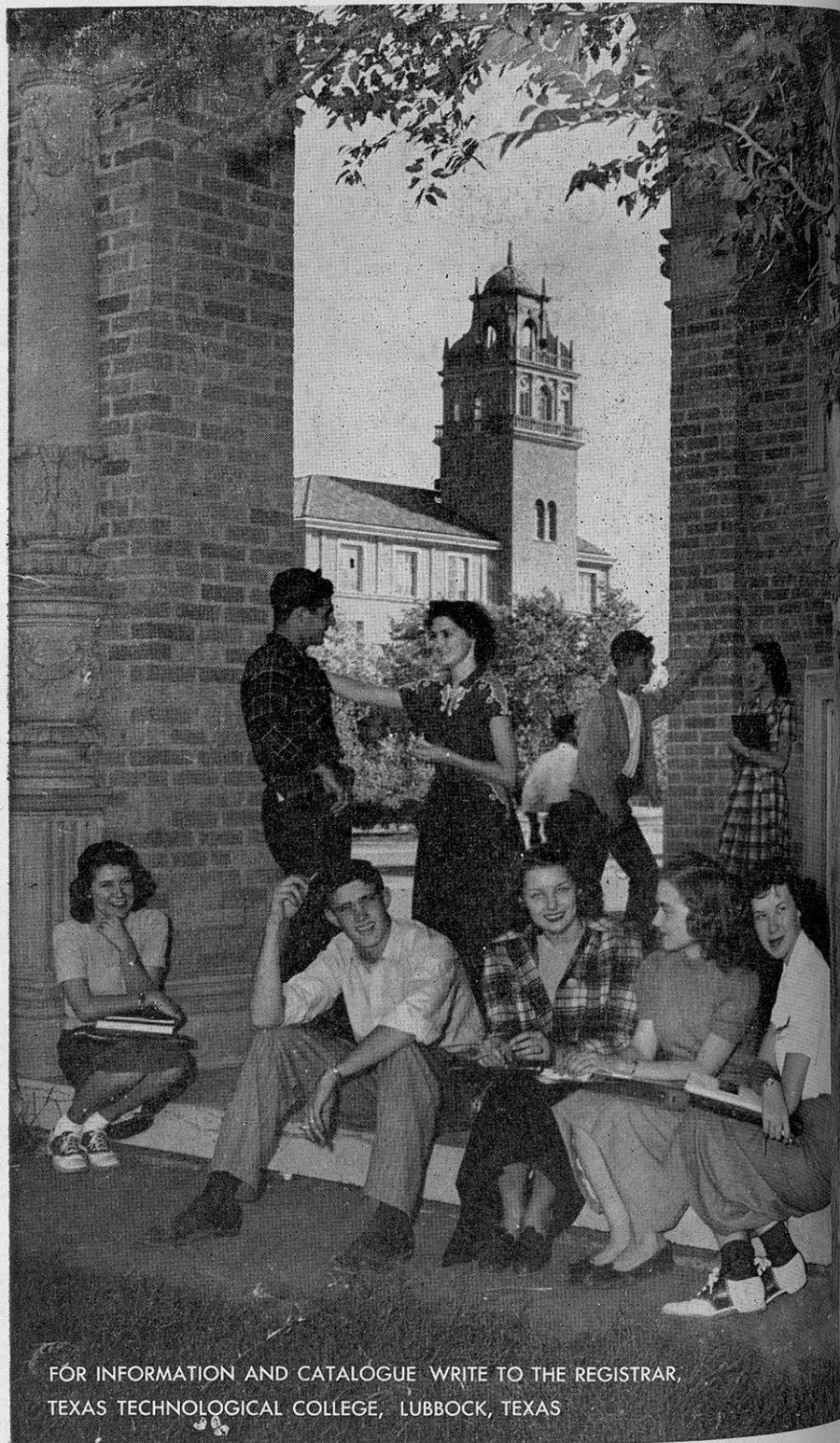
Biology
Chemistry
Economics
Education and Psychology
English
Foreign Languages
Geology
Government
History and Anthropology
Journalism
Mathematics
Music
Philosophy and Sociology
Physical and Health Education
Physics
Pre-professional Courses in Med-
icine, Dentistry, Pharmacy, Law.
Speech

Business Administration

Accounting
Economics
Finance
Management
Marketing
Secretarial Administration

Extension--

Correspondence
Extension
Lecture
Motion Picture



FOR INFORMATION AND CATALOGUE WRITE TO THE REGISTRAR,
TEXAS TECHNOLOGICAL COLLEGE, LUBBOCK, TEXAS