

TEXAS TECH vs. LOYOLA



FRIDAY NIGHT, OCTOBER 26th, 1934 • Price 15c

As thousands cheer

-They Satisfy



FRIDAY NIGHT

November 2nd, 1934

8:15 p. m.

at GILMORE STADIUM

BEVERLY BOULEVARD at FAIRFAX



Redlands University

vs.

Loyola University

RESERVED BOX SEATS \$1.65

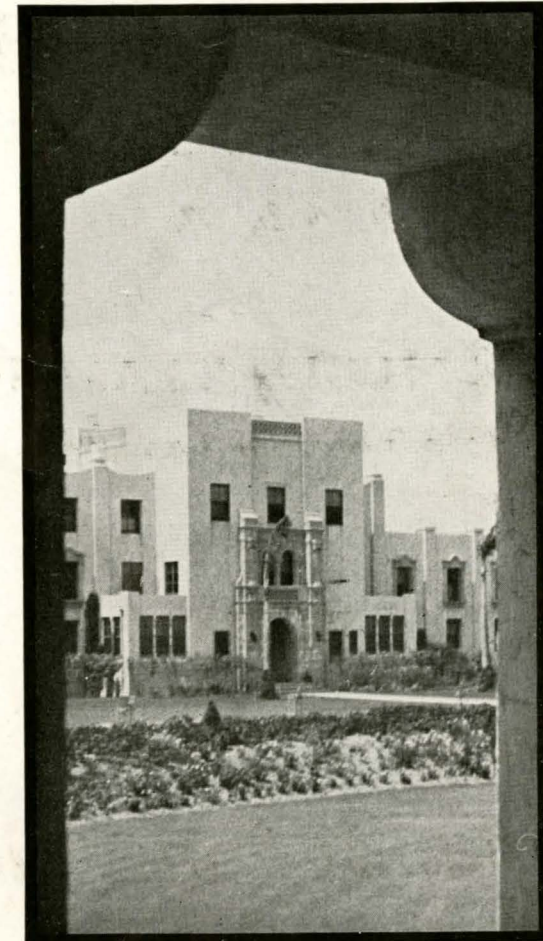
RESERVED SEATS \$1.10

General Admission 40c

CHILDREN 25c

Official Souvenir Program

PRICE 15c



Administration Building
LOYOLA UNIVERSITY

Texas Technical College

vs.

Loyola University

at

GILMORE STADIUM

BEVERLY BLVD. AT FAIRFAX

PUBLISHED BY THE
BOARD OF ATHLETIC CONTROL OF LOYOLA UNIVERSITY
Program Manager FRANK SCHNEIDER, THornwall 1149

Here's to You, LOYOLA

... the best year you ever had

It's a treat to eat our very fine meat . . .
... so, stop in a while and give us a trial.

We're like Loyola . . . Hard to beat

PENNY MARKET

8770 W. PICO BLVD.
Phone WOODBURY 61125

SAVING CENTER MARKET

5817 S. WESTERN AVE.
Phone VERMONT 0367

SOUTHGATE PUBLIC MARKET

2620 SANTA ANNA, SOUTHGATE
Phone KIMBALL 2486

ALEXANDER'S MARKET

3791 ARLINGTON AVE.
Phone VERMONT 7612

ROTH'S GREATER MARKET

7675 S. CENTRAL AVE.
Phone JEFFERSON 9412

WHOLESALE and RETAIL

Main Office

PICO & ROBERTSON BLVD.
Phone WOODBERRY 61125

Ben Zitnik
General Manager

Red Raiders





THE SECRET OF
DRIVE
IS CONTROLLED POWER

says TOM LIEB
Head Coach of Loyola Football Team

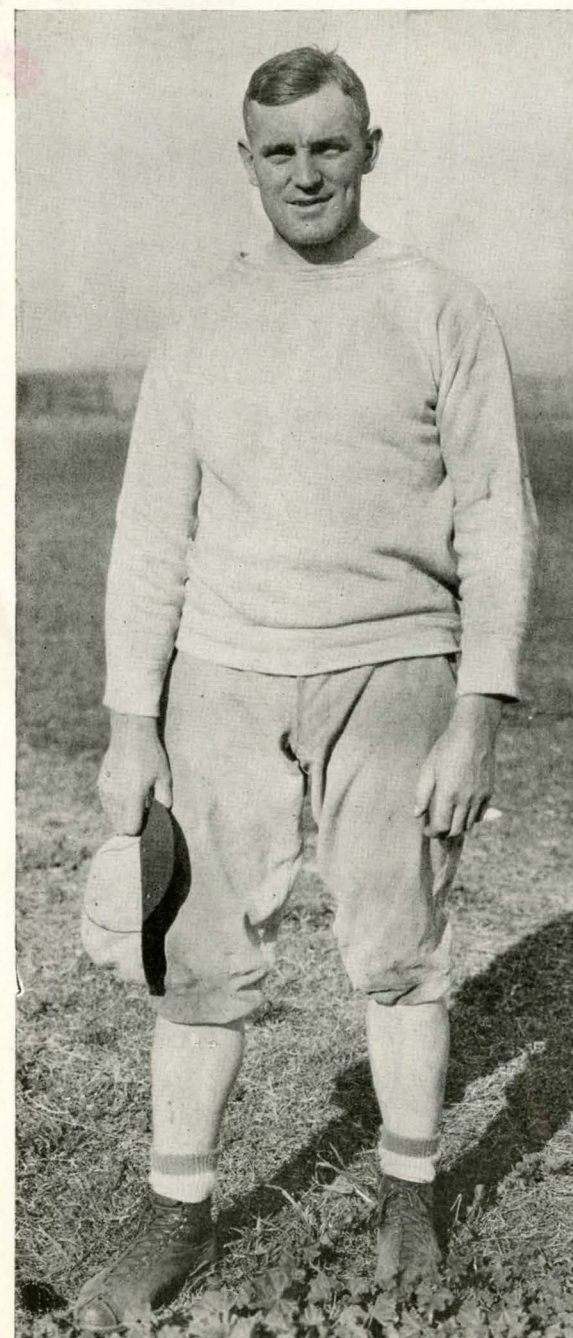
"It's not so much the amount of brawn but how it's used that makes the grade in football. A top-notch varsity man makes ALL his power count . . . when and where it's needed . . . because he knows how to CONTROL his POWER . . . how to time every move. Then he has the DRIVE that makes plays click!"

New Gilmore Red Lion gasoline gives your motor championship drive . . . the same type of Controlled Power Tom Lieb demands. Red Lion doesn't waste energy. It burns progressively . . . with a perfectly timed, sustained power DRIVE on the piston head for the full stroke. That's power WHEN and WHERE it's needed. That's Controlled Power. Get Red Lion today and your car will make the performance grade . . . always!

GILMORE  **RED LION**
PLUS TETRAETHYL

Loyola vs. Texas Tech

THE LION TAMER



Coach TOM LIEB

Texas Tech's football team, a squad that has shown rapid strides in the gridiron game during the past few years, tonight plays Loyola University in the start of a series of home and home games.

Next year Loyola is scheduled to go to Lubbock, Texas, home of the Texas Tech squad to play a return contest.

Head Coach Pete Cawthon and his assistants, "Dutchy" Smith and "Jab" Ballard, have compiled an interesting record during the past three seasons.

In 1932 Texas Tech was the nation's largest scoring machine, compiling a total of 382 points against 29 for the opponents.

Last year the Maroon Marauders failed to score as many points but they had a mighty impressive record. They lost the opening game of the season to Southern Methodist and then swept through the rest of the schedule of eight games. Among their victims were Dixie University, Arizona University, Simmons University, Baylor University and Kansas State.

Like Loyola the Texas Tech team uses the Notre Dame or Knute Rockne style of football.

This year the Red Raiders, as they also have been dubbed, opened their season by playing Texas University and lost a 12 to 6 game by having a kick blocked in the closing minutes of play. The following week Texas U. defeated Notre Dame. In the next game Texas Tech swarmed over McMurry College, 24 to 7; defeated Baylor University 14 to 7 and then swamped Oklahoma City University, which is coached by Stan Williamson, former star for the University of Southern California.

Indicative of the interest in Texas Tech is the rooting section that accompanied the team from Lubbock, Texas. In addition the presence of the 50 piece band shows how the students support the school's activities.

Loyola greets you, Texas Tech, and hopes that tonight's game will be the start of a long series of home and home contests.

Maroon Marauders



NO FANCY NAMES
NO WILD-EYED
CLAIMS . .

Just a uniformly GOOD gasoline for
dependable performance

ST. HELENS PETROLEUM CO., Ltd.
Producers Refiners Marketers

PATRONIZE THE
INDEPENDENT DEALER

Personal Service
INSURANCE
COUNSELLORS

Frank M. Flynn
AND CO.
(Former Loyolan)

1446 North Highland Avenue
HOLLYWOOD
Telephone Hollywood 7262

LOANS *for* REPAINTING *and* REPAIRING HOMES...



UNDER PROVISIONS OF FEDERAL HOUSING ACT

Low interest rates make it possible for you to give your home
needed painting with Acme Quality Paint Products

FOR DETAILS

Phone ANgelus 4161



ACME QUALITY

ACME WHITE LEAD
and COLOR WORKS

Manufacturers of
Acme Quality Paints

LOYOLA *at* LOS ANGELES



O'BRYAN
End



WHALEN
Captain Halfback



MAXWELL
End



DUVALL
Tackle



BROSSEAU
Halfback



KIPP
Tackle

COMPLIMENTS

of the

TOWNSEND GLASS COMPANY

368 ALISO STREET

A Smart Play to Call

“P-A-4-I-O-I”

for

EXPERT LAUNDERING *and* DRY CLEANING

Blue Bird Laundry

3622 CRENSHAW BLVD.

PHONE—PArkway 4101

TEXAS TECH SQUAD
PETE CAWTHON, Coach

Nos.	Names	Nos.	Names	Nos.	Names
12	McKeever, g	31	Prim, e	54	Garrett, c
13	Duval, q	33	Thornton, t	55	Owen, g
14	Rigler, g	34	Fortner	56	West, e
15	May, g	35	Jones, e	57	Baze, b
16	T. Wilson, b	36	Winters, b	58	B. Gilmore, e
17	Beauchamp, q	37	Dowell, b	59	Scoggin, b
18	Martin (Capt), e	41	Barlow, t	60	Gessell, t
19	Curfman, f	43	McElroy, b	61	Kotrola, t
20	B. Williams, t	46	Nichols, t	63	L. Browning, t
21	Rader, e	48	Harris, b	64	Murphy, t
22	Neil, f	49	Morris, t	65	W. Gilmore, e
23	Priddy, c	50	Holcomb, t	66	Wiggington, c
25	Spears, e	51	Davis, g	67	Lofland, g
28	Clark, q	52	J. Browning, t		
29	McWilliams, g	53	W. Wilson, t		

LOYOLA SQUAD
THOMAS J. LIEB, Coach

Nos.	Names	Nos.	Names	Nos.	Names
1	Whalen, (C) h	35	Labozetta, q	55	Foley, h
10	Saunders, c	37	Esnard, t	56	Lubisich, f
15	Vitalich, g	39	Christensen, h	57	McLaughlin, J. h
20	Daly, c	40	Chapman, h	58	Agamenoni, e
21	Bigler, e	41	Klausen, g	59	Mojica, e
23	Parrish, q	42	Woolridge, c	60	Harmell, g
24	Nocerini, h	44	Santa Cruz, g	62	Kipp, t
25	Schnieders, e	46	Enrico, g	63	Barry, e
27	Rozier, c	47	Duvall, t	64	Trani, t
28	Byrne, h	48	Scheliga, g	65	Galassi, q
29	McLaughlin, B. h	49	Race, h	66	Maxwell, e
31	Snell, q	50	Dempsey, t	67	Aragon, h
32	Dallmeier, t	51	Ferrari, f	68	Briese, f
33	O'Bryan, e	54	Knappman, t	69	Scarvada, g
34	Dowell, e			76	Brosseau, h

LINE UP

TEXAS TECH	Position	LOYOLA
25 Speers	L. E. R.	O'Bryan 33
52 Browning	L. T. R.	Kipp 62
53 W. Wilson	L. G. R.	Santa Cruz 44
66 Wiggington	C	Saunders 10
46 Nichols	R. G. L.	Scheliga 48
49 Morris	R. T. L.	Duvall 47
58 B. Gilmore	R. E. L.	Maxwell 66
17 Beauchamp	Q	Galassi 65
22 Neil	L. H. R.	Foley 55
36 Winters	R. H. L.	Ferrari 51
59 Scoggins	F	Briese 68

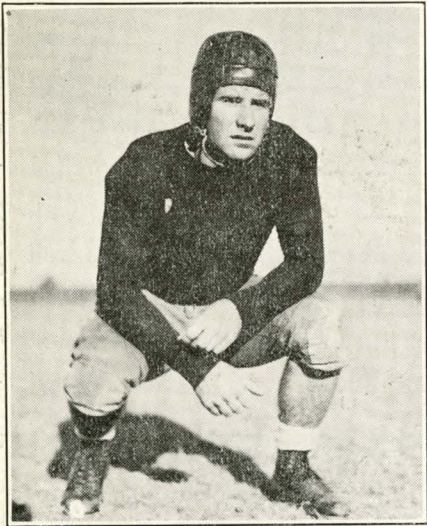
OFFICIALS

JIM BLEWETT (Cal.)	Referee
O. LANDRETH (Friends)	Umpire
B. KIRKPATRICK (Occidental)	Head Linesman
V. BRENNAN (Pomona)	Field Judge

There is no substitute
for HI-OCTANE!

RICHFIELD

Loyola Luminaries



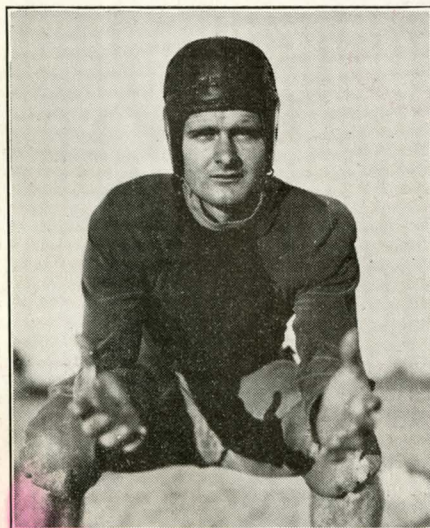
FOLEY
Half



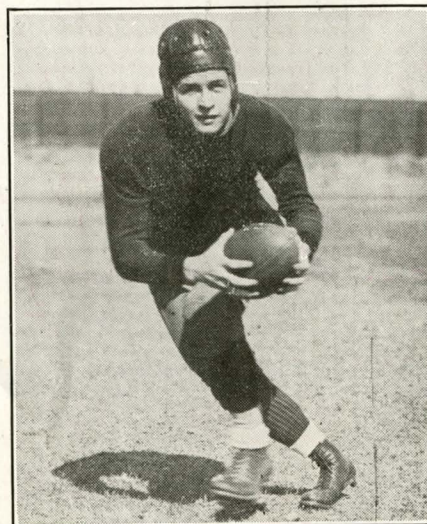
LABOZETTA
Quarter



SAUNDERS
Center



J. McLAUGHLIN
Half



SNELL
Quarter

Borden's

FRESH MILK

Guarantees you the
3 essential qualities
of fine dairy products

Freshness Flavor
Safety

Order it at your market or Telephone PROspect 4436

BORDEN'S FARM PRODUCTS CO. of CALIFORNIA, LTD.



With the Players

There are three sets of Brothers on the field tonight. J. and L. Browning for Texas Tech are playing at the tackle positions. B. and W. Gilmore are playing end on the same team and Loyola contributes the McLaughlin brothers, Bart and Johnnie, both half backs.

Number 37, Gwynn Dowell who hails from Miami, Oklahoma and plays halfback is one of the outstanding passers on the Red Raider Team.

Captain Howard Whalen, who has been nursing an injury for the past couple of weeks, is expected to be back in the lineup tonight for the Lions. The fans have been watching for his return for they have not forgotten his great showing in the early games of the season.

Whalen might have played in the last two games but Tom Lieb, the Lion Mentor prefers to take no chances with his boys. When Howard Whalen begged to get into the Santa Clara game at the half time Tom's answer was: "Howard, it's only a game; in an hour it will be over, and in a week it will be forgotten. But you might carry a souvenir the rest of your life." Relman Morin the Sports Editor of The Evening Post commenting on the above story has this to say: "As long as men of that stamp are coaching our football teams the game and the boys are in good hands."

L. Grattan O'Bryan, better known as "Louie", turned in another great ball game last week at Tucson, when, as acting Captain he played the full sixty minutes. Not to be outdone by his running mate, Dave Maxwell at the other end of the line stayed in for the full time and played an excellent game in every way.

Billy Byrne, left halfback for Loyola, played some high grade football against Arizona last week. Both Walt Chirstensen and Byrne have done yeoman work since Howard Whalen was kept on the sidelines because of an injury.

Mike Santa Cruz and Frank Scheliga gave the natives in Arizona a fine exhibition of just how effective two good guards can be. You don't hear much about Frank and Mike but you will generally find them with Saunders on the bottom of every pile.

Saunders was another "Iron Man" at Arizona, going the full sixty minutes. Besides playing his usual strong game at center he tried his hand as a ball carrier when he intercepted an Arizona pass and returned it twenty yards before being run out of bounds.

Ray Briese started his first game at the fullback berth and what a start it was. Ray is the "Power House" variety of fullback who combines speed with a hard charge. Ray will be in there tonight.

To Pete Lubisich went the honor of driving over for the touchdown. Pete played a whale of a game with his usual hard driving thrusts through the line and a wide-awake pass defense.

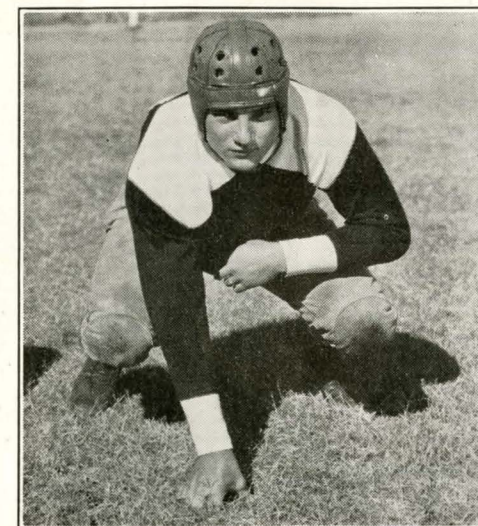
"Wild" Bill Ferrari started the game in Tucson at the left half and proved that he can play a great game running from the left just as he did when he played the fullback assignment.

"Big" Jim Kipp who doesn't say much but plays a lot turned in sixty minutes of class A football at left tackle against the Wildcats.

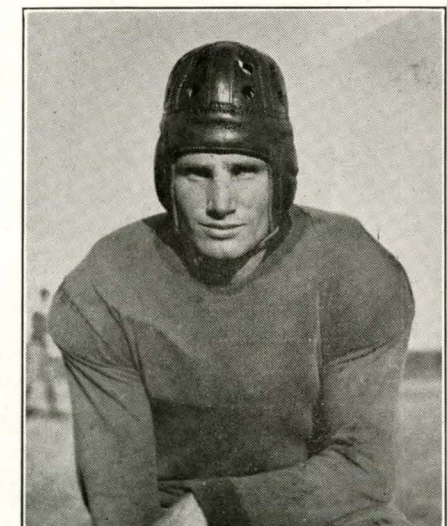
For the first time this season Al Duval was not in the starting line-up at Tucson. Harold Daly started in place of Al and looked so good in there that Coach Lieb left him there until the half. Al earned his shower in the second half. In fact it was over Al's tackle that Pete Lubisich dove to score.

The Loyola Reserves, the lads who were left at home after Tom Lieb took 33 players to Tucson, made a trip to Santa Barbara last Sunday and defeated the Santa Barbara Athletic club team 19 to 6. Bill Sargent was in charge of the squad. Jim Hagberty and Joe Aragon showed up exceptionally well against the Clubmen.

Loyola Lions



SCHELIGA
Guard



BYRNE
Half

Two sure wins...

LOYOLA LIONS

and

KARL REID'S

Guaranteed
USED CARS

4th and Valley, Alhambra

Phones:

Capitol 3952 Alhambra 5444-W

Best of luck to
TOM LIEB
and the
BOYS

"May you get the LION'S
share of victories this season"

∞∞

EDWARD HOLTZMAN
and
DAVID K. JOHNSTON

∞

FRESH FRUITS and VEGETABLES
1001-1007 San Julian St.
LOS ANGELES

PRospect 6441-6442

Best Wishes

To

TOM LIEB
and the Team

Your Friends

Bradford Bakeries, Ltd.

W. A. HENRY

W. H. HENRY



Henry Finance Co., Ltd.

Loans

Contracts Refinanced
Payments Reduced
Contracts Handled for Individuals
Dealers Contracts
Reasonable Rates
Courteous, Confidential

2727 So. Figueroa St.
PRospect 3231



Let this trainer keep your motor in the
championship class. And give it fighting
power with

Macmillan first grade Gasoline

**"Le Cognac est la
Liquueur des Dieux"**
Victor Hugo

RAYNAL & Co.

JARNAC-CHARENTE
FRANCE

COGNAC

Compliments:—

HENRI DUGAL
DIRECT REPRESENTATIVE

Yells and Songs of Loyola

TRIPLE L

L—L—L—O—Y
O—O—O—L—A
L—O—Y—O—L—A
Loyoola
Loyoola
Loyola
Repeat

* * * * *

LION SPELL

Lions
L-L-L-L
I-I-I-I
O-O-O-O
N-N-N-N
S-S-S-S
Lion Varsity
Team Team Team

L—OY—

L—O—Y, O—L—A
L—O—Y, O—L—A
L—O—Y, O—L—A
Loyola
Loyola
Loyoola

* * * * *

PLAYER'S NAME

Rah Rah Rah Rah
Player's Name

* * * * *

GRRAH

Grrrrrr Rah
Grrrrrr Rah
Rrr rrr rrr Rah
Fight 'em
Loyola

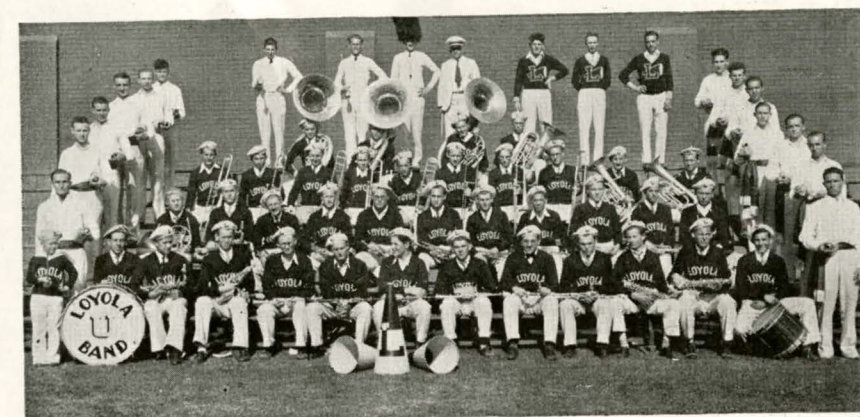
LION VARSITY SIX

Lion Varsity
Rah, Rah, Rah, Rah, Rah, Rah
Lion Varsity

* * * * *

LOCOMOTIVE

L—O—Y—O—L—A
Rah—Rah—Rah—Rah
L—O—Y—O—L—A
Rah—Rah—Rah—Rah
L—O—Y—O—L—A
Rah—Rah—Rah—Rah
Loyola
Loyola
Loyoola



HIKE LOYOLA TEAM

Loyola Varsity, March on
Until this football game is won
Slashing, driving through the line and air,
Bring the ball back to the Lair,
Keep up that fighting drive and score,
Let's win the victory once more,
So like a mighty tide let's surge along
And hike! Loyola team, march on!

* * * * *

LET'S GO LOYOLA

Let's go Loyola—let's win this game
Every new victory blazons the name
LOYOLA,

Click at the kickoff, take the lead
Show the foe that we've got speed,
Dig in you Lions, roar on your way
Claw up the yardage—gain on each play,
LOYOLA,

Fight for her name, fight for her fame,
Fight for this game, men fight,
FIGHT - FIGHT

ALMA MATER SONG

Alma Mater thee we praise
From our hearts forever
College scenes and college days
Time will ne'er dis sever.
Come Loyolans sing again,
Chorus the old refrain
To our Alma Mater.

To Loyola pledge we loyalty,
Praises bring, let them ring,
Through this span of life
Our song shall be:
Hail Loyola hail, hail Loyola hail.

* * * * *

FIGHT ON LOYOLA

Fight on Loyola, Fight to win
Roar on you Lions, Roar again,
Keep up the spirit born of old
Our loyalty will ne'er grow cold
Fight on Loyola, we're all here
Backing you with a cheer,
We're beside you, here to guide you
So, Fight—Fight—Fight!

Texas Technical College

1934 Varsity Football Roster

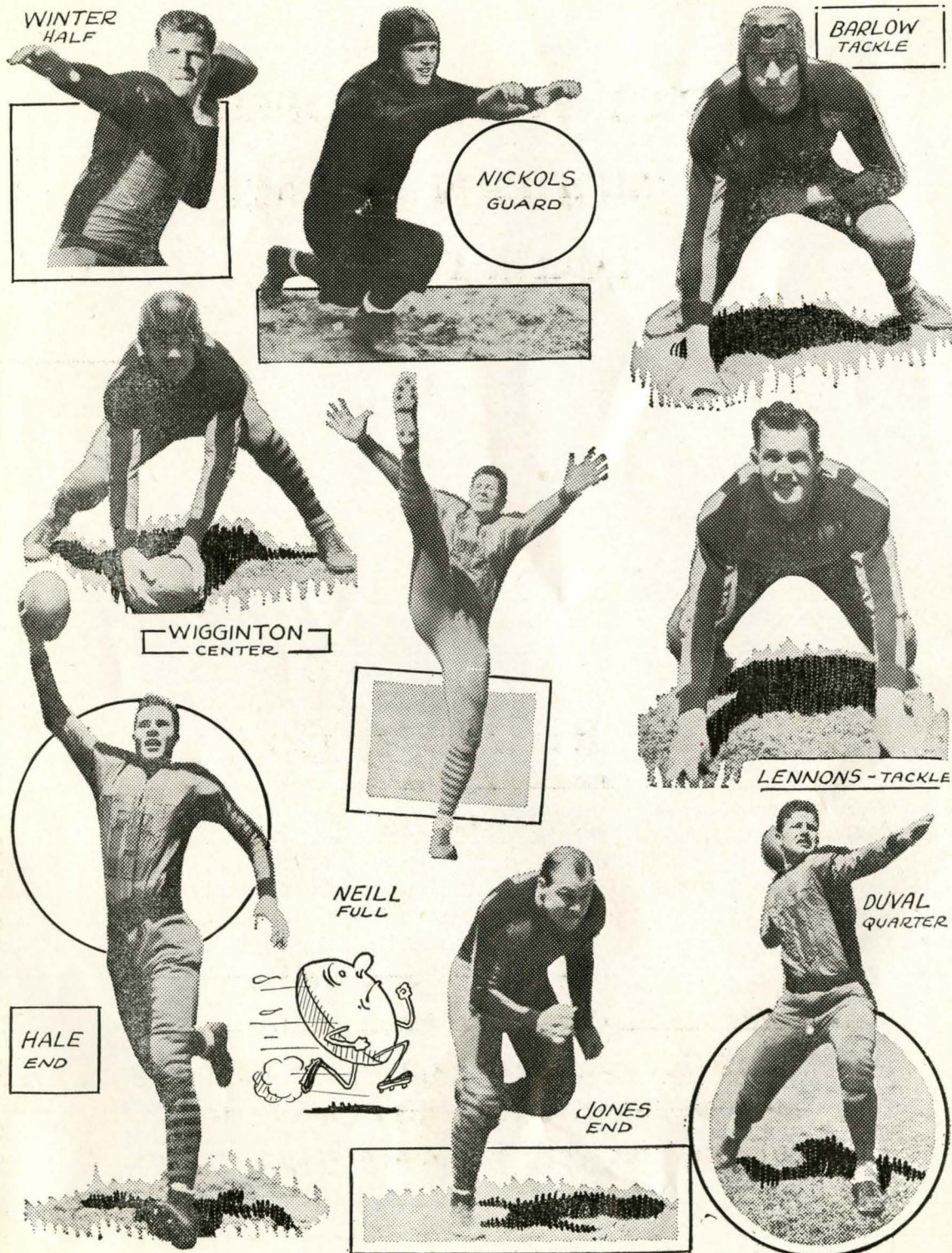
No.	Name	Position	Weight	Home
57	Baze	Half	172	Robert Lee
41	Barlow	Tackle	178	Royce City
17	Beauchamp	Quarter	137	Granville
52	Browning J	Tackle	185	Fluvanna
63	Browning L	Tackle	188	Fluvanna
28	Clark	Quarter	148	Denison
19	Curfman	Fullback	194	Electra
51	Davis	Guard	202	Abilene
37	Dowell	Half	192	Miami Okla.
13	Duval	Quarter	150	Sherman
34	Fortner	Center	172	Sherman
54	Garrett	Center	165	Lubbock
60	Gessell	Tackle	215	Henderson
58	Gilmore B	End	168	Olney
65	Gilmore W	End	170	Olney
46	Hale	End	168	Lubbock
48	Harris	Half	148	Salisaw Okla.
50	Holcomb	Tackle	205	Sulhur Springs
35	Jones	End	178	Abilene
61	Kotrola	Tackle	189	Taylor
67	Lofland	Guard	170	Royce City
43	McElroy	Half	151	San Angelo
12	McKeever	Guard	152	Sopfford
29	McWilliams	Guard	142	San Benito
15	May	Guard	150	McKinney
18	Martin (Capt)	End	154	Lorenzo
49	Morris	Tackle	180	Seymour
64	Murphy	Tackle	185	Brady
22	Neil	Fullback	171	Brownfield
55	Owen	Guard	192	Sherman
31	Prim	End	160	Pawnee Okla.
23	Priddy	Center	164	Granville
21	Rader	End	176	Texarkana
14	Rigler	Guard	147	Plainview
59	Scoggins	Half	180	Lubbock
25	Spears	End	165	Wilson
33	Thornton	Tackle	225	Tyler
56	West	End	165	Memphis
66	Wiggington	Center	174	Chollicothe
16	Wilson T	Half	160	Sand Springs, Okla.
53	Wilson W	Tackle	190	Mexia
20	Williams	Tackle	185	Lubbock
36	Winters	Half	171	Dallas

Loyola University

1934 Varsity Football Roster

Nos.	Name	Position	Weight	Height	Age	Years Experience
58	Agamenoni, Alderico	End	194	5' 10½"	23	0
67	Aragon, Joseph	Half	158	5' 7½"	20	0
63	Barry, John	End	170	5' 11"	20	0
21	Bigler, Boley	End	170	5' 11"	21	1
68	Briese, Ray	Fullback	196	6' 2"	22	0
76	Brosseau, William	Half	180	5' 8"	24	2
28	Byrne, William	Half	165	5' 10"	19	0
39	Christensen, Walter	Half	178	6' 2"	23	1
20	Daly, Harold	Center	190	6' 1"	21	1
32	Dallmeier, Simon	Tackle	197	6' 4"	22	0
50	Dempsey, John	Tackle	207	6' 2"	18	0
34	Dowell, William	End	174	5' 11"	19	0
47	Duvall, Al	Tackle	195	6' 1"	21	1
46	Enrico, Nestor	Guard	180	5' 8"	23	1
37	Esnard, John	Tackle	206	6' 3½"	20	0
51	Ferrari, William	Fullback	184	6' 0"	23	2
55	Foley, John	Half	180	5' 9"	20	0
65	Galassi, Reno	Quarter	172	5' 11"	22	1
60	Harmell, Sol	Guard	192	5' 8"	19	0
62	Kipp, James	Tackle	197	6' 2"	19	2
41	Klausen, Einar	Guard	180	5' 10"	20	0
54	Knappman, Robert	Tackle	201	5' 6½"	24	1
35	Labozetta, Joseph	Quarter	163	5' 8½"	21	1
56	Lubisich, Peter	Fullback	183	5' 11"	20	1
66	Maxwell, Dave	End	177	5' 9"	20	1
29	McLaughlin, Bart	Half	143	5' 7"	21	2
57	McLaughlin, John	Half	155	5' 10"	22	0
59	Mojica, Ralph	End	185	5' 11"	22	0
24	Nocerini, Dominic	Half	171	5' 10½"	19	0
33	O'Bryan, Louis	End	178	6' 0"	21	2
23	Parrish, Max	Quarter	175	5' 8"	18	0
43	Pearring, Ralph	Guard	175	5' 10½"	20	0
49	Race, Edward	Half	180	5' 8"	19	0
27	Rozier, William	Center	188	6' 1"	20	0
44	Santa Cruz, Mike	Guard	188	5' 11"	21	2
10	Saunders, Marcel	Center	203	6' 2"	20	1
69	Scarvada, John	Guard	165	5' 10"	19	1
48	Schelig, Frank	Guard	180	5' 10¾"	22	2
25	Schnieders, Oliver	End	173	5' 10¾"	20	0
31	Snell, George	Quarter	173	5' 10½"	20	1
64	Trani, Nick	Tackle	203	6' 0"	21	2
15	Vitalich, John	Guard	185	5' 11"	18	1
1	Whalen, Howard, (C)	Half	170	5' 11"	23	2
42	Woolridge, Joseph	Center	180	6' 0"	21	0

Texas Matadors



PROTECT YOUR PROPERTY
WITH MODERN FORMS OF
INSURANCE

R. A. ROWAN & Co.

ROWAN BUILDING

LOS ANGELES

... is a large and well equipped insurance agency, having been continuously in business for more than a quarter of a century. It is suggested that you ask this company to give you a report on your insurance requirements.