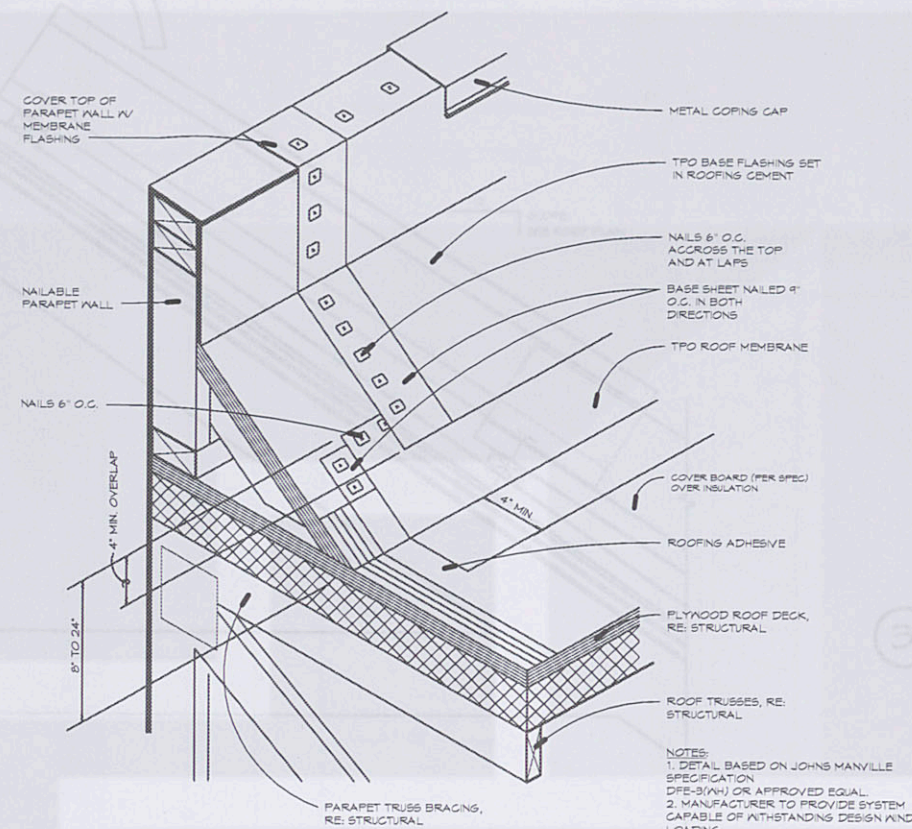
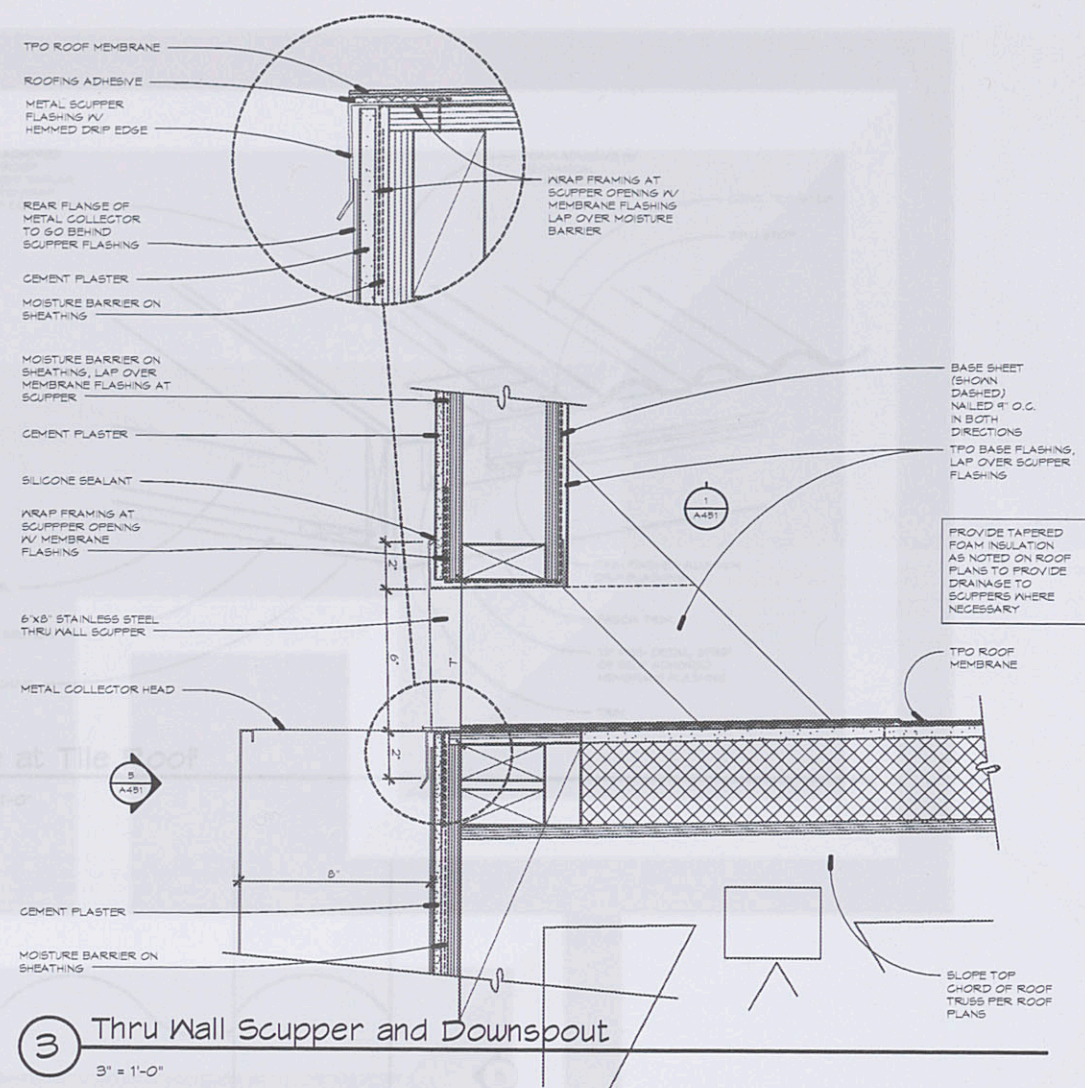


1 Scupper at Parapet with Kicker  
3' x 1'-0"



2 Parapet Flashing at Kicker  
3' x 1'-0"



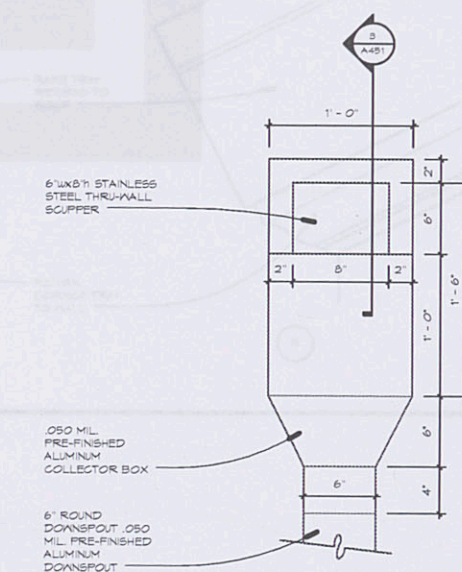
3 Thru Wall Scupper and Downspout  
3' x 1'-0"

1 Roof Eave at Wall Lower  
6' x 1'-0"

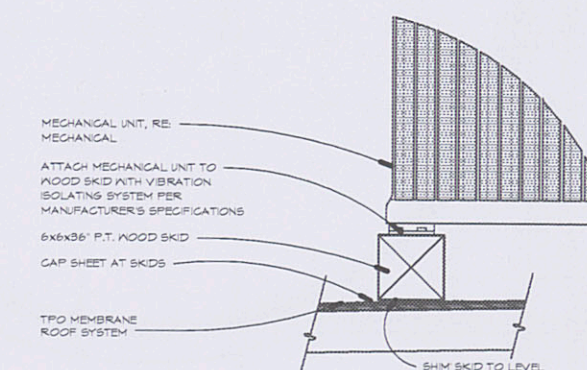


4 DETAIL AT ROOF TRANSITION TO STUCCO  
1 1/2' x 1'-0"

4 Rake Termination  
1 1/2' x 1'-0"



5 Elev. Collector  
1 1/2' x 1'-0"



6 Mechanical Unit Rack  
1 1/2' x 1'-0"

2 Head Detail at Access Door  
3' x 1'-0"

5 Final Detail at Tile Roof  
1 1/2' x 1'-0"

Architecture Planning Interiors Research  
175 Toyota Plaza, Suite 600  
Memphis, Tennessee 38103  
Telephone 901.521.1440  
Fax 901.525.2760  
E-mail info@lrk.com

Client:

**LOADSTAR, Inc.**

9830 Colonnade Boulevard, Suite 600  
San Antonio, Texas 78230

Issues

Date Issues

04.03.12 50% CD

06.08.12 PRICING SET

07.11.12 PERMIT SET

No. Date Revisions

8 10/15/12 For Construction Set

©2012 LRK Inc.  
Drawings, written material, and design concepts shall not be used or reproduced in whole or part in any form or format without prior written consent of LRK Inc. Do not scale drawings. Use given dimensions only. If not shown, verify correct dimensions with the Architect. Contractor shall check and verify all dimensions and conditions at job site.

Seal



Project Number: 01.11073.00

Project Name:

La Cantera Mixed Use

6215 Via La Cantera  
San Antonio, Texas 78256

Drawing Name:

Roof - Low Slope Details

Drawn By: BD, MF, DS

Checked By: BD, BE