

SWC  
SF996.45  
.M63  
2015  
no. 1

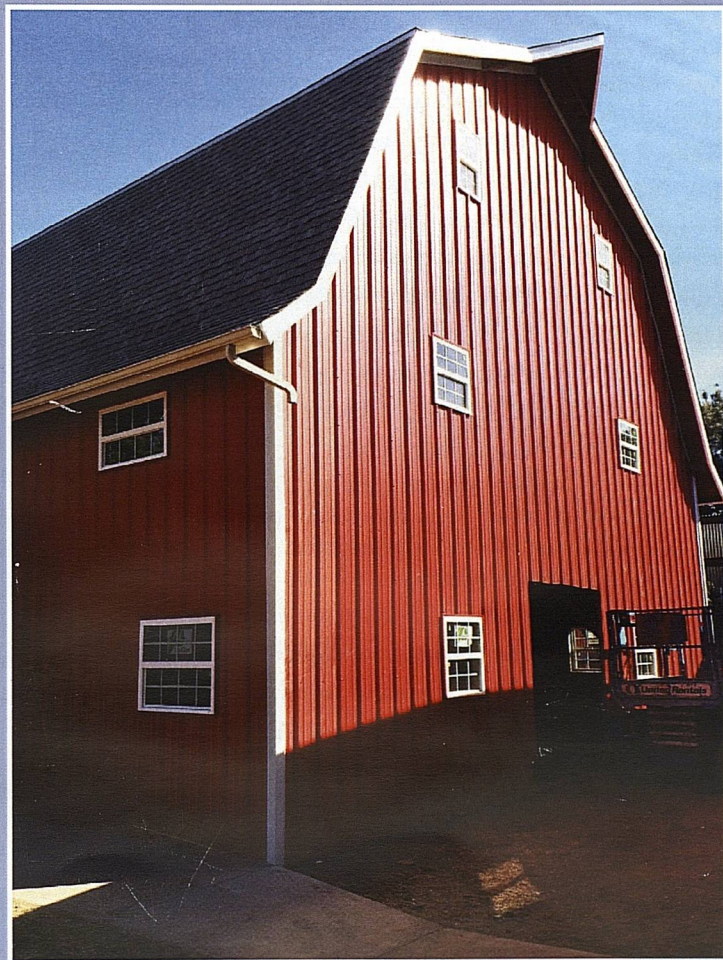
# The Mockingbird Chronicles



Newsletter of the South Plains Wildlife Rehabilitation Center, Inc.

Number 1/ 2015

## *'Building' Excitement!*



Transformation and Renovation of our barn after 27 years

See pages 6 and 7 for the many changes taking place

## Letter from the Founder



Carol Lee

### The Wildlife Center's Cornerstone Project Takes Wing

At long last, our dream for a new wildlife facility is coming true - a dream I never thought I'd see as a reality in my lifetime. However, slowly but surely, it's all finally taking shape. We hope you'll read our plea for your help on the next page - we hope to not have to drain our savings and emergency funds to complete this Project. We've saved for this improvement almost since our beginning in 1988, and it's hard to believe the complete renovation, inside and out, of the barn is now becoming a reality! See photos in the centerfold, and by June when our next issue is mailed, we'll have new photos of the interior - functional, practical, colorful, well-designed and energy efficient. The new planned water-fowl facility will offer our ducks, geese and water birds a safe environment where they can grow and thrive before being returned to the wild.

I had high hopes the Center's March 2015 spring newsletter cover would sport a photo of the barn, with its stunning brick red exterior, white trim, and wide white entry doors.

My wishes notwithstanding, by March 5th, our spring issue was getting ready to go to the printer if it was to stay on schedule. Several things still had to happen, however, before the large front and back white doors will be installed: plumbers must finish their work before the cement can be poured on the first floor, (which is presently dirt),

and then it will be time to install the new doors.

Knowing this may take days or weeks, I decided to show what's been done thus far on our spring cover. Hopefully by the time our summer issue is mailed, we'll have our eye on a special event to commemorate the completion of this project and celebrate the momentous occasion!

*Carol*

### Our Blueprint for the future

SPWRC's Missions of wildlife rehabilitation and environmental education aren't shaped by short-term financial hopes or specific projects with guaranteed funding sources.

Instead, they're fixed upon strategies that will forever move SPWRC forward to be as responsive as possible to our region's conservation and environmental needs.

We continue our commitment to area wildlife, and the residents who often go to great lengths to bring wildlife orphans and casualties to us from near and far.

We strive to continue to provide educational opportunities and outreach programs to foster a conservation ethic in the children and adults we reach.

Most of all, we want to ensure long-term sustainability of South Plains Wildlife Rehabilitation Center, and can do so with the continued support of the residents of our Texas South Plains communities.

**midtown**  
printing & graphics

Thank you to John Frullo, Crystal Donnell and the staff at Midtown Printing for doing a great job with our quarterly newsletters!

*The Mockingbird Chronicles* is a quarterly publication of the South Plains Wildlife Rehabilitation Center Inc. (SPWRC). The organization is an IRS determined 501(c)(3) non-profit facility that cares for orphaned, injured, ill and displaced wild animals with the ultimate goal of returning wildlife back to its natural habitat.

**SPWRC holds state and federal permits but receives no funding whatsoever from either regulating agency.**

SPWRC operations are maintained through donations, gifts, grants, education programs, quarterly newsletter subscriptions, tributes, "wildlife ambassador" sponsorships and fundraising events. *Donations are tax-deductible to the extent the law allows.*

Founder	Carol Lee
Education Coordinator	Gail Barnes
Operations Manager	Daniel Andrews

#### Officers and Directors

Dr. Jim Moyes, President
Rob Lee, Vice President
Carol Lee, Secretary
Patricia Harris, CPA, Treasurer
Gail Barnes
Sheila Johnson

**Advisors:** Blaine Oden, D.V.M.  
William Van Pelt, Austin, TX

#### Development Consultant

Stacy Keith, MA, CFRE

South Plains Wildlife Rehabilitation Center, Inc., is located at 3308 95th Street, Lubbock, TX 79423. (95th and Indiana Avenue, East side)

You can reach volunteer Gail Barnes or Operations Manager Daniel Andrews to schedule a program or community service work at (806) 799-2142.

SPWRC can be reached by e-mail: spwrc 2@yahoo.com

Founder Carol Lee can be reached at spwrc@suddenlink.net

Learn more at our website: [www.spwrc.org](http://www.spwrc.org) and follow us on Facebook.

## The Wildlife Center's Appeal for your help

According to one source, a barn raising is defined as: "A social event in which members of a community assist in the building of a new barn." After, twenty-seven years, we're asking our donors, friends, neighbors and supporters to help us build (in this case re-build) our barn.

For almost three decades, the old three story wooden barn stood idle on the back of the wildlife center property. There was a dirt floor, no heat or insulation, poor lighting, and a garden hose brought cold water to a freestanding sink on the first floor. The barn was used primarily for storage. We dreamed one day all wildlife care would take place under that roof and saved for the project year in and year out - every dollar not used for expenses.

In 2013, the J. T. and Margaret Talkington Foundation provided a large grant with seed money to renovate the structure. We selected architect Mary Crites and Teinert Commercial Building Services to help us get the ball rolling.

Many thoughts and ideas, phone calls, e-mails, formal and informal meetings helped shape the plans of what we needed and wanted for the best wildlife care operation possible. Many discussions followed - about lighting, concrete, insulation, plumbing, flooring, paint, finishes and a multitude of other topics. Being energy efficient was a top priority. By mid-October we had a firm cost estimate, and a contract was signed in November. The most cost-effective method was to renovate all three floors at the same time, to avoid repetition of hiring subcontractors and going back to the drawing board after each phase. At the same time, our new waterfowl facility will be constructed, and piggy-backed onto the barn renovation project.

At last in 2015, our dream is becoming a reality - this is our "Cornerstone Project" - for the future of SPWRC. New facilities will allow us to treat more animals in need and enhance the quality of care we provide. As construction progresses bills are coming in, and we hope to not deplete our emergency funds. We hope our donors, friends and supporters will help us financially. Our goal is to finish construction without depleting those funds and move into our new, fully functional facility by May 1st.

SPWRC raises all necessary funds to keep our doors open: Donations when animals are brought in; grants; gifts; *Mockingbird Chronicles* subscriptions; adopting a "wildlife ambassador;" tributes; environmental education programs; fundraising/other special events; Holiday Appeals and sale of Commemorative Bricks. The Center holds state and federal permits, but receives ***no funding from our regulatory agencies***. The Center also has no "parent" organization. We've been helping wildlife casualties and residents from far and wide since 1988.

Our Mission and focus remains on wildlife rehabilitation with a goal of release for our sick, injured, displaced or orphaned wildlife casualties whenever possible, and our ongoing environmental education in and around the Texas South Plains. (See before and after photos, page 6, 7).

### Yes, I want to help raise and renovate the South Plains Wildlife Center's barn

☐ \$15.00

Donor Name: \_\_\_\_\_

☐ \$20.00

Home address, City, State, Zip: \_\_\_\_\_

☐ \$25.00

☐ \$30.00

☐ \$50.00

Phone with area code (    ) \_\_\_\_\_

☐ \$100.00

☐ \$150.00

Gift in Memory/or in Honor of a family member, loved one, friend or pet

☐ \$250.00

(Please underline your selection) \_\_\_\_\_

☐ \$500.00

☐ \$1000.00

Acknowledge to: \_\_\_\_\_

☐ \$\_\_\_\_\_ to provide help for

Recipient's complete address \_\_\_\_\_

SPWRC's Cornerstone project

All gifts will be acknowledged in our June *Mockingbird Chronicles*, and Memorials/Tributes will be acknowledged to your designated person or persons.

## Thank you for Grant and other funds!

We are indebted to several large gifts this quarter: In February we were notified we would receive a \$10,000 gift in response to a grant proposal from Summerlee Foundation in Dallas. This will be used for general operating, feeding, care and rehabilitation of animals.

In March, South Plains Foundation in Lubbock also gave us \$10,000 in response to a grant proposal. These funds are to be used toward our barn renovation project.

We are also thankful for another large gift from The Audrey Beckman Divilbiss Charitable Unitrust, also for \$10,000.

Two area groups also contributed to the Wildlife Center during the last quarter: The Panhandle Chapter, Texas Master Naturalist Program in Amarillo, Texas (\$500.00) and the Llano Estacado Audubon Society (\$250.00) after we presented a public program for the chapter February 3<sup>rd</sup>.

Special thanks to Stacy Keith, former Board Member and our Director of Development, who has been instrumental in securing grant funding for us!

## "Titan" dubbed 'Mascot' for new Jayne Anne Miller Elementary School

If you received our December, 2014, newsletter, you know "Titan," the Center's Great Horned Owl, was chosen to be the mascot for the new Jayne Anne Miller Elementary School. The new school combined students from Murfee and Haynes Elementary schools and opened in January.

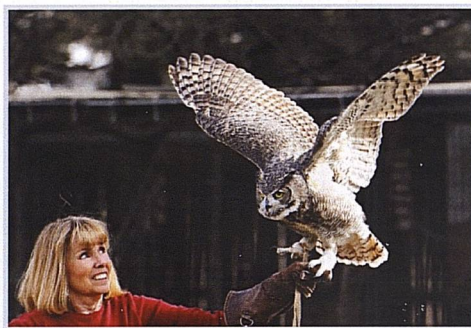
The unveiling of the mascot for the new Jayne Ann Miller Elem was May 8th, 2013. A lady at Haynes Elementary called about two months prior to that and asked Gail Barnes, Titan's caretaker, if Titan would consider being the Mascot for the new school.

Principal Kevin Booe saw Titan on the LISD website from some programs we had presented and said he specifically wanted *that* owl. Titan gladly accepted the honor!

## Our star "Titan"



"Titan" - the 'Guest of Honor' at the  
Jayne Anne Miller groundbreaking  
Ceremony last summer



Gail Barnes with Titan  
(Photo by Danny Hancock)

## Dedication Ceremony at the New School

On March 1, 2015, Gail Barnes and "Titan" attended the Dedication Program at the new Jayne Anne Miller school.

Titan's entry and exit was over in a matter of seconds, so a photograph wasn't possible, but suffice it to say the owl got a big round of applause as they announced South Plains Wildlife Rehabilitation Center!

We toured both floors of new classrooms after the ceremony, and they are beautiful. Each room is decked out with owl decorations of every kind imaginable. The new school was built on the site of Murfee Elementary.

My youngest son attended the latter years ago, and it was great to see a beautiful modern new school constructed at that site.



## Education

Seventeen programs were presented since December 2<sup>nd</sup> through March 6<sup>th</sup>:

A home school "Bat" program at Providence Presbyterian Church; a program for seniors at Lubbock's Ventura Place; an annual program for the local Llano Estacado Audubon Society; seven programs for students at Miller Elementary School; a program at Cooper North Elementary School - with the Science Spectrum - for an after school program; Harmony Science Academy; Bowie Elementary Pre-Kindergarten class.

Programs were also given to the Idalou 4-H group; a program for the DAR (Daughters of the American Revolution), a tour for students of Ramirez Elementary school and participation in dedication of the new Jayne Anne Miller Elementary School.



Bayer CropScience

Bayer CropScience is a proud  
sponsor of  
"The Mockingbird Chronicles"

## Tributes

### Gifts to Honor

Dr. Brent and Susan Nall of Lubbock made a generous donation in Honor of the following friends and colleagues:

Ginger and Don Bundock  
Dr. K. Narendran  
Drs. Chetlen and Connie Crossnoe  
Dr. Patti May  
Dr. and Mrs. Jeff Hannel  
Dr. and Mrs. Stephen Cord  
Dr. Duncan and Melanie Burkholder

\*Donna Skinnell of Radford, Virginia, made a donation in Honor of her family, Frank and Margie Firenza of Lubbock.

\*Malcolm, Julie and Lila McLaughlin of Aurora, Colorado, made a generous donation in Honor of Malcom's father and our long-time volunteer Tom McLaughlin.

Tom started volunteering in 2001. Their gift was to be used toward our barn renovation, and we are appreciative! Tom was notified of their kind gift.

\*Maribeth Dennis of Lubbock made a holiday donation in Honor of Jo Conatser, also of Lubbock. She wrote, "In grateful appreciation for Jo Conatser helping me when I was sick."

\*Sheri and Jim Phillips of Lubbock made a Holiday donation in Honor of Dr. C. E. Stewart, Brownwood, Texas.

\*Sara Carter of Lexington, South Carolina, made a generous holiday contribution in Honor of Glenn and Janie Forister of Lubbock.

### Gifts to Remember

\*Beverly Colbert made a generous holiday contribution in Memory of her son, Matthew Colbert.

\*Janie and Glenn Forister made a Memorial Holiday donation in the name of "Little Deer." Acknowledgement was sent to John and Sara Carter of Lexington, South Carolina.

\*Susie Williamson made a Memorial contribution in the name of Stacie Piercy George of Lubbock. She passed away in November, 2014. An acknowledgement was sent to her husband, David George and family.

### Gifts to Remember

\*Jean Morrison made a Holiday donation "In Memory of David."

\*Jane and Charles Peek made a generous Memorial donation in Memory of their daughter Jasmyne Peek.

\*Marion Livingston made a generous Memorial contribution in the name of our long-time former volunteer, Kathy Phillips.

\*Gail and Larry Barnes made a generous Memorial donation in the name of Katy, Gail's daughter.

\*Dr. Cheryl and Fred Weber of Lubbock made a donation in Memory of "Dahlia," the bunny of daughter Amy Weber of Santa Fe, NM.

\*Fidel and Twila Ortiz, Keystone Donors from Hart, TX, made a donation in Memory of Billie Bland Evans Terry. Acknowledgement was sent to Steve and Sue Smith of Hart, TX.

\*Dr. and Mrs. David Close of Lubbock made a very generous donation in Memory of Gail Davies who passed away in January. A Commemorative area will be established in our new building. Gail's husband, Dr. Don Davies of Lubbock, was notified.

\*Carol and Rob Lee also made a donation in Gail's Memory to SPWRC. Her husband Don was notified.

Karen and Carmon McCain of Lubbock made two Memorial donations for the following:

\*In Memory of "Keno," faithful dog of Keystone Donor Carre' Avian.

\*In Memory of "JJ," beloved cat of Linda and John Smith of Lubbock.



\*With sympathy to our volunteer of 15 years, Angela Westbrook, on the loss of her sister, Kim Westbrook Harris, February 27th, 2015.

Memorials for Kim will be listed in our next quarterly newsletter.

(Angela is the best baby mammal "mom" we've ever had!)

## Commemorative Bricks

Bricks purchased during the holidays or the last quarter will be laid prior to our next event at the Wildlife Center when construction and our barn renovation is complete.

Mr. and Mrs. Dwight Overton of Lubbock purchased two Commemorative Bricks. They will be inscribed as follows:

\*Olive Capri Overton We Love You  
\*Vivian Emmie We Love You

A Commemorative Brick was purchased for Gail Davies who passed away January 7<sup>th</sup>, 2015. This donation thanks to a generous gift from Dr. and Mrs. David Close. Gail's husband, Dr. Don Davies of Lubbock, was notified.

Photos of the recently inscribed bricks will be in our June quarterly newsletter when all present and earlier brick order bricks have been engraved by Sadler Monument Company.

## "Wildlife Ambassador" Adoptions

Ashley Evans of Plainview, TX, adopted our Chihuahuan Raven, "Vincent."

Dwight Overton of Lubbock adopted "Farley" our adorable Burrowing Owl for Hutch Overton of Lubbock.

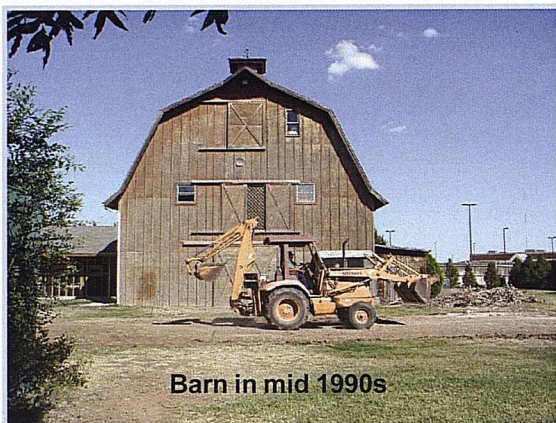
Janis and Larry Gailey of Lubbock adopted "Yoda" our little Burrowing Owl for Caisey Gailey, and "Humphrey" for Jaxson Gailey, both of Lubbock.

Kathy Beach, Post, TX, adopted three of our ambassadors for her grandchildren:

"Toenails," our Swainson's Hawk was adopted for Cullen Beach of Durango, Colorado.

Also adopted was "Humphrey," our beautiful Peregrine Falcon for Leighton Beach, (Durango, CO), and "Jasper," our Barn Owl for Levi Beach, likewise of Durango, CO.

## The Transformation begins.....



Barn in mid 1990s

Take a look at the photo on the back cover showing the property as it looked in the late 1980's. Lots of changes have taken place to reshape the property since then! The first project was demolition of the old tin livestock building and replaced with a metal building where much of our wildlife care took place. In 2001, an outdoor aviary was built. We also added an Animal Drop Off building that year, and a large outdoor aviary in 2002.



Cement pad under stable is removed

"Ambassador Row" was constructed in 2003 in front of the barn to house the Center's education raptors. Our outdoor flight cage was completed later that year.

In June, 2004, a large pond and outdoor amphitheater and learning center were added, along with a garden area near our eagle sculpture.

In 2009 an old stucco structure was modified to become our new baby bird building. Without any debt, we were able to complete all these improvement projects because for the Wildlife Center's **first nineteen years, we were 100% volunteer**, and every dollar not used for operations was put into our savings account.

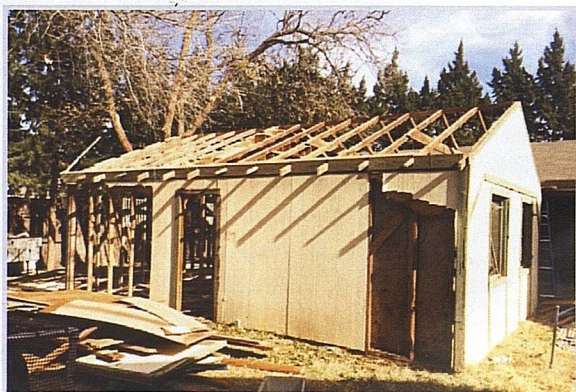
Community support and many other factors have enabled us to expand our realm of care for area wildlife.

In addition to our donors, we are indebted to several area veterinarians, our tireless volunteers and junior volunteers, interns, two employees, Board of Directors and advisors from Texas Tech.

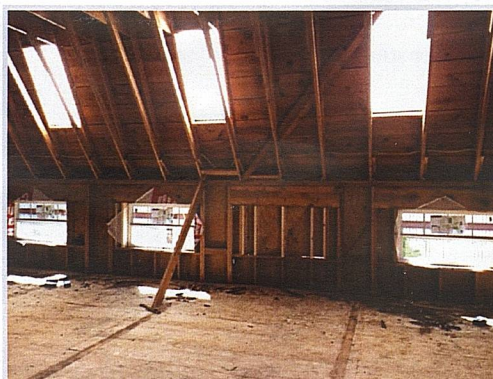
We're very proud of our achievements, and who'd have believed we'd still be here serving Lubbock 27 years later!



On December 8th, workers clear out interior remains and start work on the roof



The old stable is being demolished December 3, 2014, to make way for the new waterfowl facility



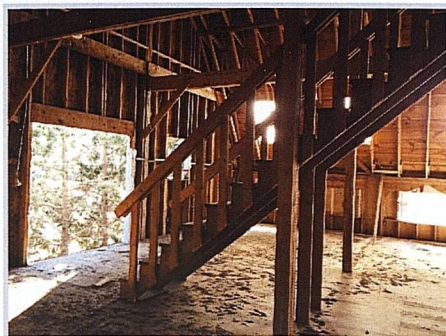
On February 3rd our new windows were installed

This view is windows and skylights on the barn's second floor

## ...and Renovation continues

The day the previous newsletter went to the printer December 2, 2014, workers arrived on site at the Wildlife Center. One group started tearing down our old stable and another removed the remaining shelves and built-in items from the first floor of the barn. Before long, they were replacing the barn roof and putting in our new skylights and the barn was wrapped in a vapor barrier. The cement pad under the stable was removed to clear the site for what will be our new waterfowl facility.

Work halted for several weeks before and after the holidays, but new windows, doors, and metal siding were all ordered, and permits were applied for. The photos depict some of the work that has transpired over the past 3 months.



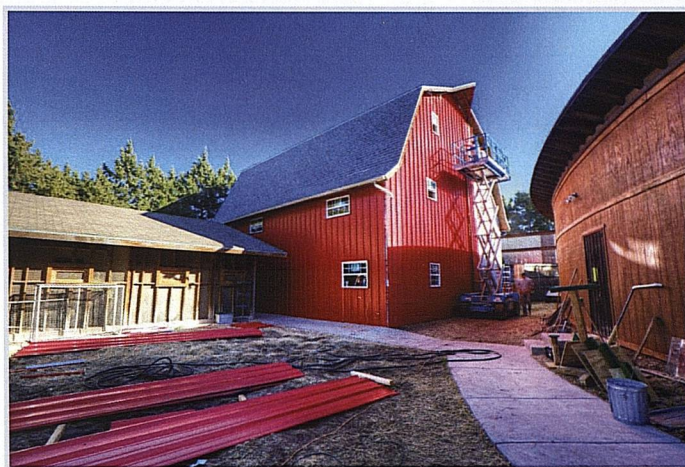
The barn's second story will also have a large door on each end

All three floors of our new facility will be bright, well ventilated, and energy efficient

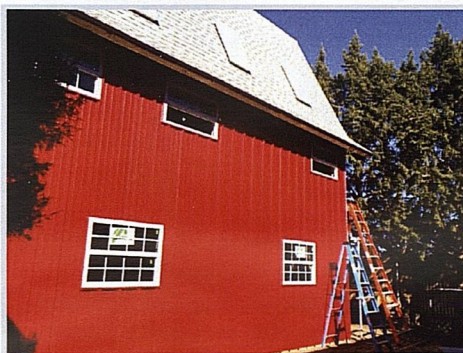


'Vapor Wrap' added December 15th

"Vapor Wrap" is designed to block drafts from coming in through gaps and joints in the walls, and also lets the building 'breathe' from inside out to allow moisture to escape.



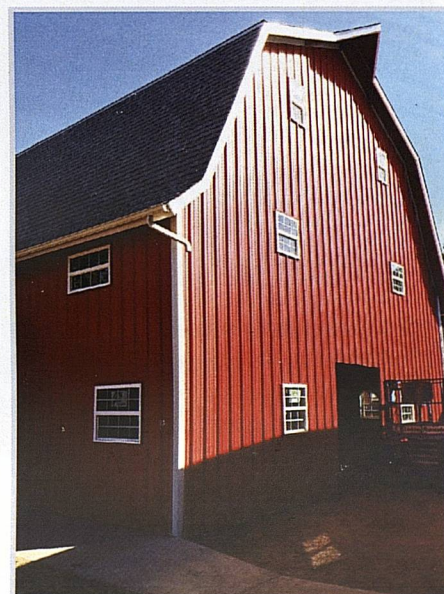
The barn, left, is adjacent to the outdoor aviary, behind Ambassador Row. Our flight cage and deer yard is on the other side of the barn.  
The metal siding was applied over several days  
(Photo by Danny Hancock)



February 9th - siding and windows on barn's south side are complete



Left: PVC pipes can be seen as interior plumbing work gets underway the week of March 2nd



Above: February 13 the exterior siding and trim is complete save for the front and back large doors



The new Miller Elementary School sports this owl icon on every classroom and throughout the school's two floors



Graduate student volunteer Bridgette Fidler walks around during the Audubon program February 3rd to show off "Trooper," our little Eastern Screech Owl to guests

If your donation arrived after March 6th, it will be acknowledged in our June newsletter. If your name, gift or other information was inadvertently omitted or incorrect, please notify Carol Lee at [spwrc@suddenlink.net](mailto:spwrc@suddenlink.net)

If the expiration date on your newsletter label is not correct, please tell me. Donations of \$25.00 receive a subscription of 1 year (4 quarterly issues).

## 55th Eagle Scout Project Completed

Eagle Scout candidate Cody Copeland, completed his project at SPWRC in February.

He constructed two travel boxes and three bow perches for small birds and also three bird perches that will be used in their transport carriers. This is the Wildlife Center's 55th Eagle Scout Project.

Cody is a senior at Coronado High School. He has an interest in music and the Army may be in his future plans. His parents are Janet and Ray Copeland of Lubbock.

We appreciate your efforts on behalf of our wildlife ambassadors at SPWRC, Cody!

**There are many ways you can help us help wildlife!**

[www.GoFundMe.com/Help-us-help-wildlife](http://www.GoFundMe.com/Help-us-help-wildlife)



SPWRC is also registered at **AMAZON SMILE** for charitable donations

<http://smile.amazon.com/ch/75-2468445>

and also at **eBay Giving Works**

Any eBay seller can donate 10%-100% of the final sale price.

## PayPal™

To donate using PayPal, visit our web site: [www.http://spwrc.org](http://www.http://spwrc.org)



## "OWL CAMP"



Volunteer Gail Barnes will offer a three-day "Owl Camp" in June for ten 4<sup>th</sup> and 5<sup>th</sup> graders.

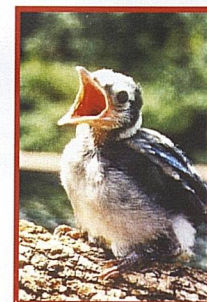
This class will be educational, interactive and most of all, fun!

Space is limited, so contact Gail at the Center at 806-799-2142 for more information.

## Thank you for Supplies!

Jeff Bickel - Bird seed  
Paul Cotter - Bird Seed  
Julie Dewbre donated supplies  
Ashley Evans, Plainview, TX  
Irene Kandik  
Theresa Kerst - pecans  
Judy Pesetski donated fruit  
Susan Radle - Animal food and bird seed  
Don Smith - Carpet  
Leanna Smith, Levelland, hemostats.  
Margaret Sparks - 50 pounds of bird seed  
Amy Weber, Santa Fe, NM, - rabbit food, hay, litter, a shovel and rabbit hutch.

"Baby Season" 2015 is right around the corner, and we always need volunteers! Call us or visit our web site to learn more



## Adopting a "Wildlife Ambassador" helps pay for its annual care

PERCY  
\$50

AMERICAN  
WHITE  
PELICAN



TOENAILS  
\$45

SWAINSON'S HAWK

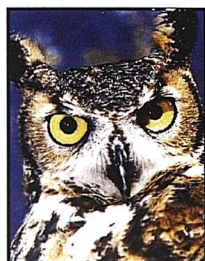


HUMPHREY  
PEREGRINE FALCON  
RIGHT  
PEREGRINE FALCON  
\$45



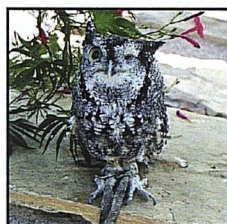
BUBO 2

\$45  
GREAT  
HORNED  
OWL



ATHENA  
\$25

EASTERN  
SCREECH OWL

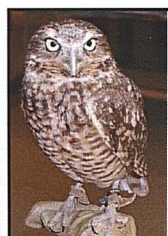


JASPER  
\$45

COMMON  
BARN OWL

FARLEY

\$35  
BURROWING  
OWL



ODEN, RIGHT

\$35  
BURROWING  
OWL



FESTUS  
\$30  
TURKEY  
VULTURE

SHADOW  
\$45

BARRED OWL



HAWKEYE,  
RIGHT  
\$ 45.00

MISSISSIPPI  
KITE



YODA, (ABOVE)

\$35  
BURROWING OWL



VINCENT  
\$30

CHIHUAHUA RAVEN

YOUR NAME _____			
ORGANIZATION OR GROUP _____			
ADDRESS _____			
		<input type="checkbox"/> Total amount enclosed _____	
		<input type="checkbox"/> Membership amount \$ _____	
		<input type="checkbox"/> Adoption of _____ Amount \$ _____	
Membership levels: ♦ Millennium Member \$5000 ♦ Life Member \$1000 ♦ Benefactor \$500 ♦ Patron \$100 ♦ Supporting Member \$50 ♦			
<input type="checkbox"/> Gift <input type="checkbox"/> Gift in memory of _____		<input type="checkbox"/> Gift <input type="checkbox"/> Gift in memory of _____	
<input type="checkbox"/> Membership amount \$ _____		<input type="checkbox"/> Membership amount \$ _____	
<input type="checkbox"/> Adoption of _____ Amount \$ _____		<input type="checkbox"/> Adoption of _____ Amount \$ _____	
<input type="checkbox"/> Adoption of _____ Amount \$ _____		<input type="checkbox"/> Adoption of _____ Amount \$ _____	
Please acknowledge to (Name) _____		Please acknowledge to (Name) _____	

## Loss of two "Wildlife Ambassadors"

During January and February we lost two longtime wildlife ambassadors: our Peregrine Falcon, "Empress" on January 25<sup>th</sup> and Red-tailed Hawk, "Harley" February 11<sup>th</sup>.

Both raptors were with us a long time and educated thousands of children and adults when they visited local schools and groups, and they will both be missed.

Longtime Volunteer Tom McLaughlin purchased Memorial plaques for both wildlife ambassadors.

We thank you for your thoughtfulness.

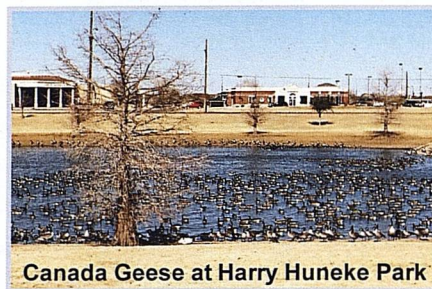


"Empress"  
1997-2015



"Harley"  
1992 - 2015

## Canada Geese numbers are In!



Canada Geese at Harry Huneke Park  
January 28th, 2015

Our local Audubon bird watchers got the following news from a survey of the winter 2014-2015 Canada Goose numbers in the Lubbock (by Texas Parks & Wildlife Department around the week of January 26th).

There were approximately 225,990 Canada Geese in our area. They noted, "These numbers are basically within and immediately around the Lubbock playas and other standing water."

Of course counts are never 100% accurate because geese are often flying, swimming or diving, but that's still a lot of geese! The landscape is suddenly eerily quiet when they all seem to take off for the north within a few days. A few remain here because of injuries and/or mated pairs may have offspring, but the rest will return to their breeding grounds in the north to nest and begin families anew.

## Thank you!

Keystone Donors are those supporters who take time every month to send us a donation on which others depend. Our everyday donations from donors, adoptions, tributes, contributions from admissions, fundraising, newsletter subscriptions and education programs allow us to keep our doors open.

Foundation and other large gifts give us the opportunity to make necessary and much-needed improvements at the Wildlife Center.

\*Donors listed with asterisks by their names indicate their gift was in response to our 2014 annual Holiday Appeal, and donations were returned in the Holiday Appeal Remittance Envelope.

## Acknowledgements

### Our Keystone Donors:

Carre' Avian  
Joyce Badger  
Judy Billman, Seattle, WA  
Cindy and Jody Burkes, Denver City, TX  
Becky and Jason Cooper,  
Cambridge, MA  
Stanley and Denise Davis  
Terry Gail Hooper  
Mark Jones  
Albert Johnson, Wichita Falls, TX  
Joyce Komkov  
Sherri Mason  
Tom McLaughlin  
Davis Melton  
Fidel and Twila Ortiz, Hart, TX  
Jose and Tracey Pineda, Shallowater, TX  
Vicki Schellhase  
Deanna and William Schwartz  
Dr. John and Debbie Zak

### Additional Gifts:

#### \$10,000.00

The Audrey Beckman Divilbiss  
Charitable Unitrust  
South Plains Foundation, Lubbock, TX  
Summerlee Foundation, Dallas, TX  
\$2000.00  
Poole Chemical Company (Karen Poole)  
Texline, TX

#### \$1000.00

Dr. David and Mrs. Lewrie Close  
Bill Pitts, per wishes of Marla Carver who  
passed away during 2014  
Dr. and Mrs. Eugene Stalnaker  
Theodore Wiesner

#### \$750.00

\*Dr. Kenneth and Terry Kruczek

#### \$500.00

Panhandle Chapter, Texas Master  
Naturalist Program (Amarillo, TX)  
Dr. Hakam Kayasseh  
\*Carol and Rob Lee  
\*Marc and Dr. Mary Blackburn Lochbaum  
Jan and Bob Matthews  
\*Dr. Brent and Susan Nall  
\*David Ratliff  
\*Floyd and Clarice Robertson  
\*Michael and Barbara Stephens  
\*Gary Woodward, Littlefield, TX

# Acknowledgements

Thanks to everyone who helps support our efforts. We appreciate every penny, and with donor contributions, we can continue to help injured, displaced, ill and orphaned wildlife.

## \$300.00

\*Dr. Bradford and Susan Goodwin,  
Kingwood, TX

## \$250.00

Gail and Larry Barnes  
Llano Estacado Audubon Society  
Jean Mann, Denver City, TX  
\*Lonnie and Nita Mason  
\*Dr. Jim and Mrs. Dee Moyes  
\*Audrey Sanzotera, Ransom Canyon, TX  
\*Charles and Jane Peek - In Memory of  
Jasmyrn Peek

## \$200.00 - \$249.00

Brenda Barner, Post, TX  
Margaret Gates, Artesia, NM  
\*H. David and Cindy Jones  
\*Diane Krumwiede and Debra Laverie  
Alzada Malone  
\*Linda and Jimmie McDowell  
John Paul Stell, Plainview, TX

## \$150.00

\*Pat and Jim Harris  
\*Glenn and Janie Forister  
John Heh, Levelland, TX  
\*Diane and Cecil Rucker  
\*Leanna Smith, Levelland, TX

## \$100.00 - \$125.00

\*Don Boteler  
\*JoAnn and Lee Bowden (Bowden Farms)  
\*Jan and Pat Campbell  
\*Jane Ann and Gary Casey  
\*John and J. Clarke  
\*Marilyn and Carl Clifford  
Nick Coppola  
\*Jim and Mary Crites  
\*Mary and John Gillas  
\*Glenn and Janie Forister  
\*William L. Hase and Alice Young  
\*Dorothy Hanesworth, Matador, TX  
\*Sandy and Alan Henry  
\*Jason and Julie Hodges  
Kaye B. Horchler, Midland, TX  
\*Dr. George and Mrs. Pat Jury  
\*Steven Kriegshauser  
\*Olivia Lemons, Shallowater, TX  
\*Karen and Tom Martin  
\*Patricia Marx

## \$100.00 - \$125.00

\*Joann Neal  
\*The Don Nickels Family, L.P.  
Ludim Pedroza, San Marcos, TX  
\*Leesa and Ed Price  
\*Roy Rettig and Alice Portnoy  
\*Loyd and Lois ShROUT, Manor, TX  
James Spivey  
\*Nancy Lee Talley  
\*Bob and Vicky Tate  
Stephanie Wells  
Dr. and Mrs. Charles Wheeler  
\*Lisa White  
\*Stacey and Thomas Young

## \$75.00 - \$80.00

Danny Hancock  
\*Anne M. Longo  
\*Helmut and Camelia Wierzbka

## \$50.00 - \$60.00

\*Alton and Mollie Abbott  
\*Sharon and Jim Beauchamp  
Carlton Bell  
\*Mr. and Mrs. David Bray  
Tim Caraway  
\*David and Sally Conroy  
\*Reyhan and John Crider  
\*Jennifer and Russell Dabbs  
\*Peg Davis  
\*Cathy and Steve Duran  
\*Lawrence and Kristina Ertner  
Sidney Field (Sidney Field Farms)  
\*Tina Fuentes  
\*Dora Kay Geiger  
\*Lisa and Larry Gilliland  
\*Carol and Gary Harber  
\*Kristen and Brian Harper  
\*Tom Hicks  
\*Tami and Chris James  
\*Mark Jones  
\*Stacy and Ray Keith  
Carol Korzeniewski  
\*Marion Livingston  
\*Woody and Linda Marcy  
Sarahlee Morris  
\*Peggy and Michael Mulcahy, Lewisville, TX  
\*Eileen and Daniel Nathan  
\*Sandy Owens  
\*Sheri and Jim Phillips  
\*Eileen Ringler

## \$50.00 - \$60.00, continued

\*Candia Welch Thew\*  
Dr. Tom and Tess Trost  
\*Fréd and Dr. Cheryl Weber  
Amy Weber, Santa Fe, NM  
\*Neoma and Don Williams, Hart, TX

## \$30.00 - \$40.00

Laura Berry  
Marilyn Crow, Garland, TX  
Dr. Donald Green, Seminole, TX  
\*Susan McIntire  
LaCretia Payne

## \$25.00

\*Jan and Steve Alexander  
\*Cindy and Kenneth Brashear, Wolfforth, TX  
\*Carole and Stan Daniel  
\*Hollis and Melissa Durham  
\*Christi Felice  
\*Shawn Ferguson (by Victoria Johnson)\*Donna and Warren Finch  
\*Dr. Robert and Jill Grant  
\*Robert Heckerman family  
Patrice Johnson  
\*Lindy Jones  
\*Linnea and Gary Kob, Houston, TX  
\*Janis Lemon  
\*E.C. and Johnnie Leslie  
\*Brian and Jamie Livingston  
\*Jeanette Probandt, Midland, TX  
\*Vicki Richardson  
\*Fritz Smith, Snyder, TX  
Margaret Sparks  
William Vaughn  
Nell Whitehead

## \$20.00

Susan and Gary Bishop  
\*Nancy and William Coen  
Tracy Davis, Wilson, TX  
\*Jo Henderson  
Noemi Martinez  
\*George Morris  
Kelsey Reynolds  
Devon Rosas  
Makayla Shirley  
Donna Townsend  
Jamie Vanla  
Ashley WardMandy and Tom Wiley  
Jacob and Paula Womack, Wilson, TX

## The Mockingbird Chronicles

Newsletter of South Plains Wildlife Rehabilitation Center, Inc.

c/o SPWRC, Inc.  
3308 95th Street  
Lubbock, TX 79423

NON PROFIT ORG.  
US POSTAGE PAID  
Lubbock, TX  
PERMIT NO. 591



This is the property as it looked during the late 1980s.

Now the perimeter on three sides of the Wildlife Center tract is surrounded by Afghan Pines and many other tall trees.

See pages 6 and 7 for all the changes that have taken place here in the last 25 years!

South Plains Wildlife Rehabilitation Center in our early days