

G O T E B O
K I O W A

COUNTY

O K L A H O M A

—ON—

ROCK ISLAND RAILROAD

SOUTHWEST COLLECTION
Texas Tech University
LUBBOCK, TEXAS 79409

450

2008

682001

Michael Vinson

450-

OKLA
38
G683
R682
G683

Oklahoma—The Land of Now

ROCK ISLAND TOWN COMPANY, Little Rock, Arkansas

OFFICERS

J. F. Walls	-	-	-	-	-	President
W. W. Rains	-	-	-	-	-	Vice President
Frank Stroupe	-	-	-	-	-	Secretary
J. E. Ellison	-	-	-	-	-	General Manager

DIRECTORS

J. F. Walls : W. W. Rains

It will only take you five minutes to read this booklet
and it will be well worth your time and consideration

GOTEBO, Kiowa County, OKLAHOMA

Gotebo is located in the Washita Valley and is surrounded by the finest farming lands to be found in Oklahoma; her crops are immense, which consist of cotton, corn and wheat, alfalfa, oats, hay, broom and kaffir corn, and where vegetables and all kinds of fruits and berries grow in abundance.



3. AL. SEXTON
5. A. T. WEST
7. M. B. MILLER

1. J. F. WALLS, President
2. J. E. ELLISON, General Manager

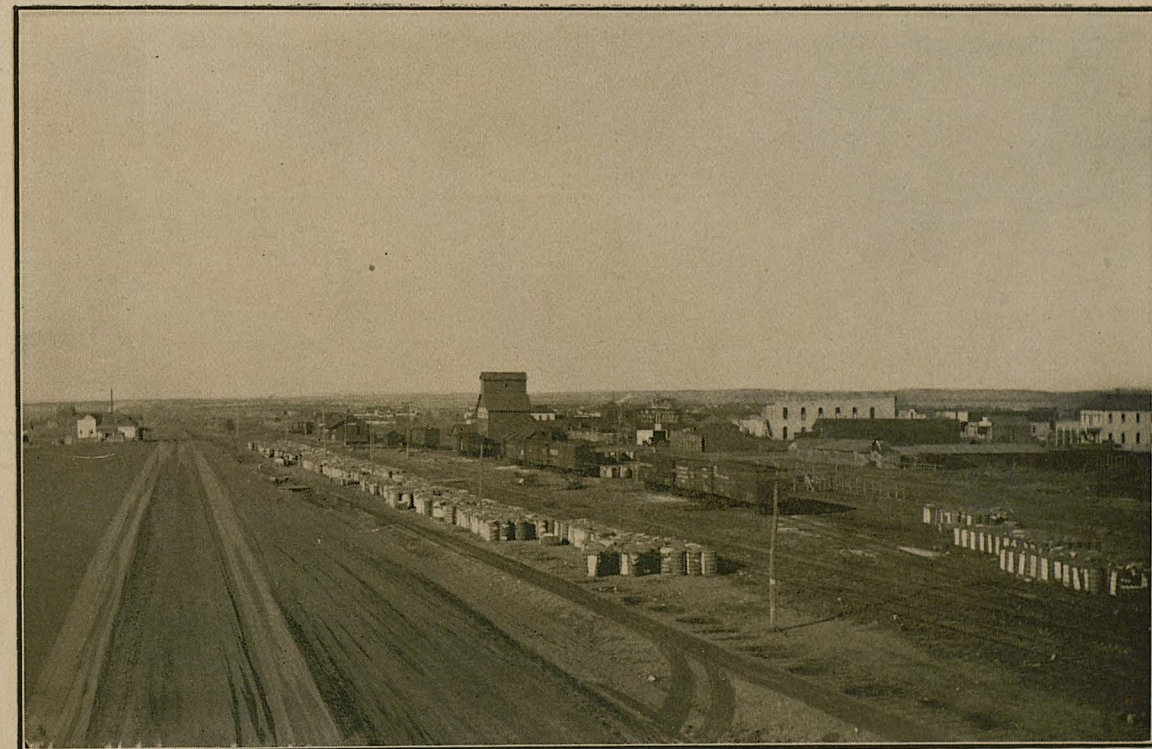
4. THOMAS G. SMITH
6. W. W. BROWN
8. JOHN R. MILLER



1. NORRIS N. SMITH
4. C. L. ROOKS
7. B. C. HARPER

2. C. A. YOUNGER
5. LON BACKMAN
8. OXFORD T. NIX

3. J. C. B. GREENHAW
6. M. W. COBBS
9. FRANK SPARKS



BIRDS EYE VIEW OF GOTEBO



ROCK ISLAND STATION AT GOTEBO



BANK OF GOTEBO



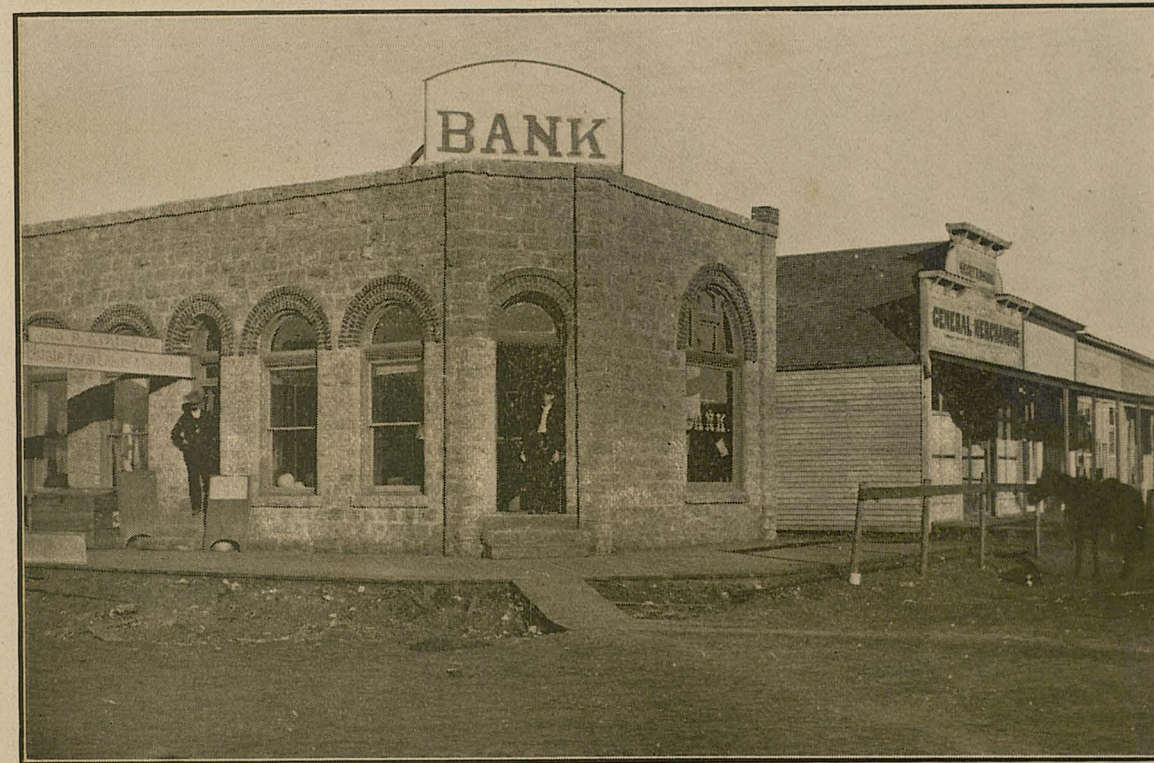
COTTON WAITING FOR SHIPMENT JAN. 3, 1907



GIN AND ONE HUNDRED BARREL CAPACITY FLOUR MILL OF HARISON
MILL AND ELEVATOR COMPANY F. B. Hirrick, Mgr.



CHRISTIAN CHURCH, GOTEBO



BANK OF HARRISON, GOTEBO



ONE OF THREE COTTON GINS, GOTEBO



NEW M. E. CHURCH, GOTEBO

What Is Seen at Gotebo

GOTEBO has three large cotton gins, one flouring mill, one large grain elevator, a fine depot and section house.

GOTEBO has two banks, three churches, one school, two hotels, one saloon, two hardware stores, barber-shop, restaurant and a number of general merchandise stores, with a population of about six hundred souls.

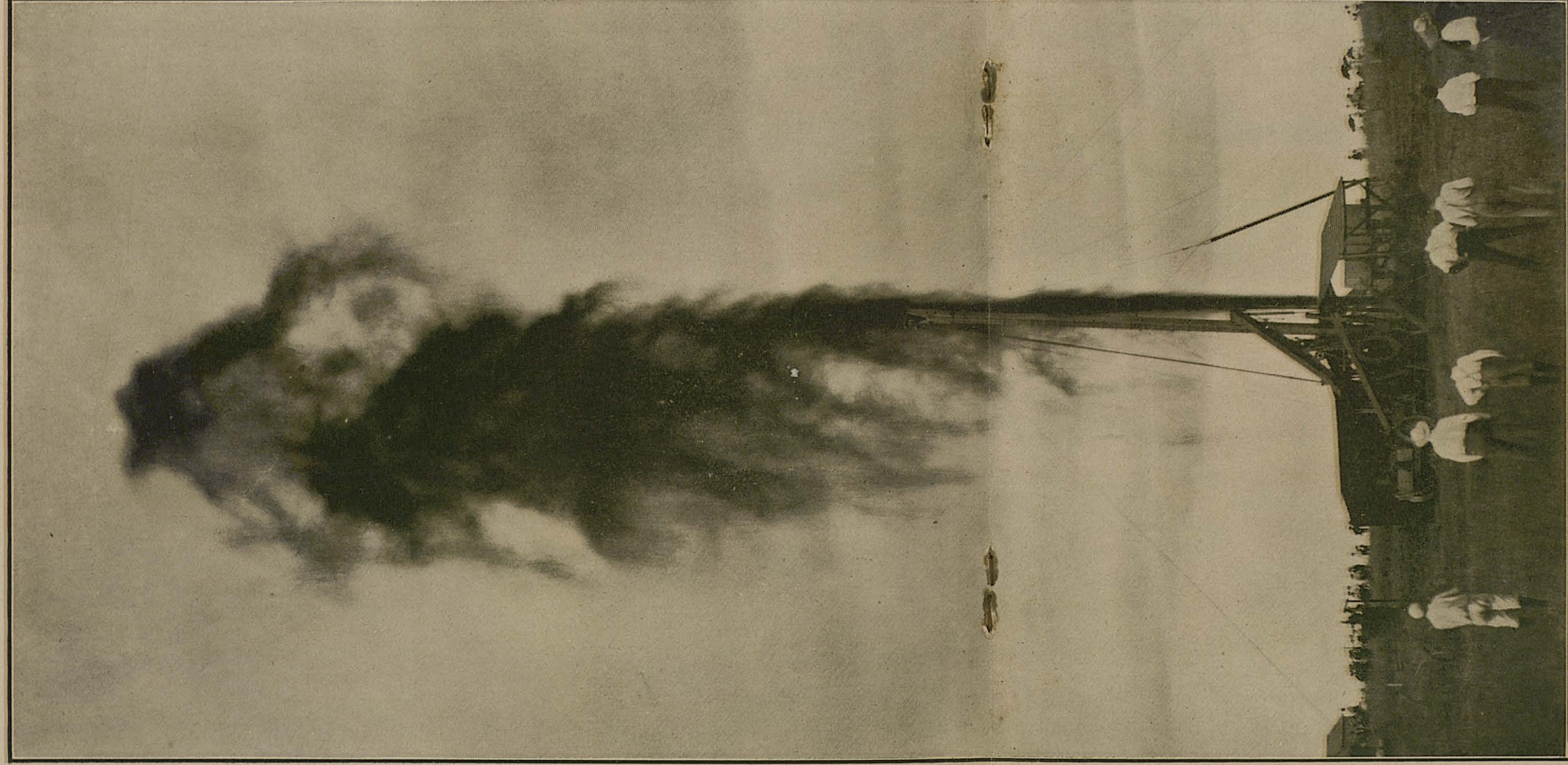
GOTEBO is heated by natural gas and lighted by natural gas which is piped from the gas and oil district which joins the city limits on the south. Good water can be had at from 20 to 30 feet. Altitude 1,350 feet above sea level; climate delightful; no malaria and no mosquitoes.

The Town Site

The town site embraces S. E. $\frac{1}{4}$ of Sec. 15, T. 7 N., R. 16 W. and is beautifully laid out and slopes in all directions, which furnishes a natural drainage.

The streets are running North and South and East and West. Main street is one hundred feet wide and all other streets are eighty feet in width; alleys are twenty feet wide.

The lots are the uniform size of lots in Oklahoma, which are twenty-five by one hundred and forty feet, with the exception of the outside residence lots which are fifty by one hundred and forty feet.



SHOOTING AN OIL WELL IN GOTEBO

GOTEBO has enough Natural Gas within one mile of the depot to supply a City of ten thousand people. Gotebo has eight flowing Oil Wells. A new Gas Well was brought in January 30, 1907, with a flow of six million cubic feet daily.

Gas has been piped to the City of Gotebo and is being used as fuel by the citizens. The farmers throughout the country burn the Crude Oil as fuel.

The Gas and Oil will make Gotebo a City of several thousand. Natural Gas can be found on the town site.

Oklahoma Has Fine Schools and Good Roads

All roads are on the section line.

The sixteenth and thirty-second sections of land belong to the public schools.

School houses are only three miles apart; nine months free school every year with free text books.

Liberal donations will be made from the sale of these lots towards erection of churches and schools in Gotebo.

Oklahoma received first prize at the St. Louis World's Fair for having the best exhibit of diversified farm products of any State or Territory in the United States.

BANKS AND RAILROADS

Oklahoma had more miles of railroad constructed in 1904 than any six states in the Union.

Since 1900 there have been more national banks established in Oklahoma and Indian Territory than in all the New England States combined.

What Western Towns Have Done for Investors

Enid has gained seven thousand in the last three years.

El Reno has in the same time grown over six thousand.

Blackwell has gained about five thousand in the same time.

Shawnee has increased her population seven thousand in the last three years.

Guthrie has swelled her number from ten to twenty-three thousand in the same time.

Oklahoma City has had the phenomenal growth of fifteen thousand in the last six months.

Lots bought in these towns at their opening can be cashed for from one thousand to twenty-five thousand dollars today.

START WITH THE TOWN!



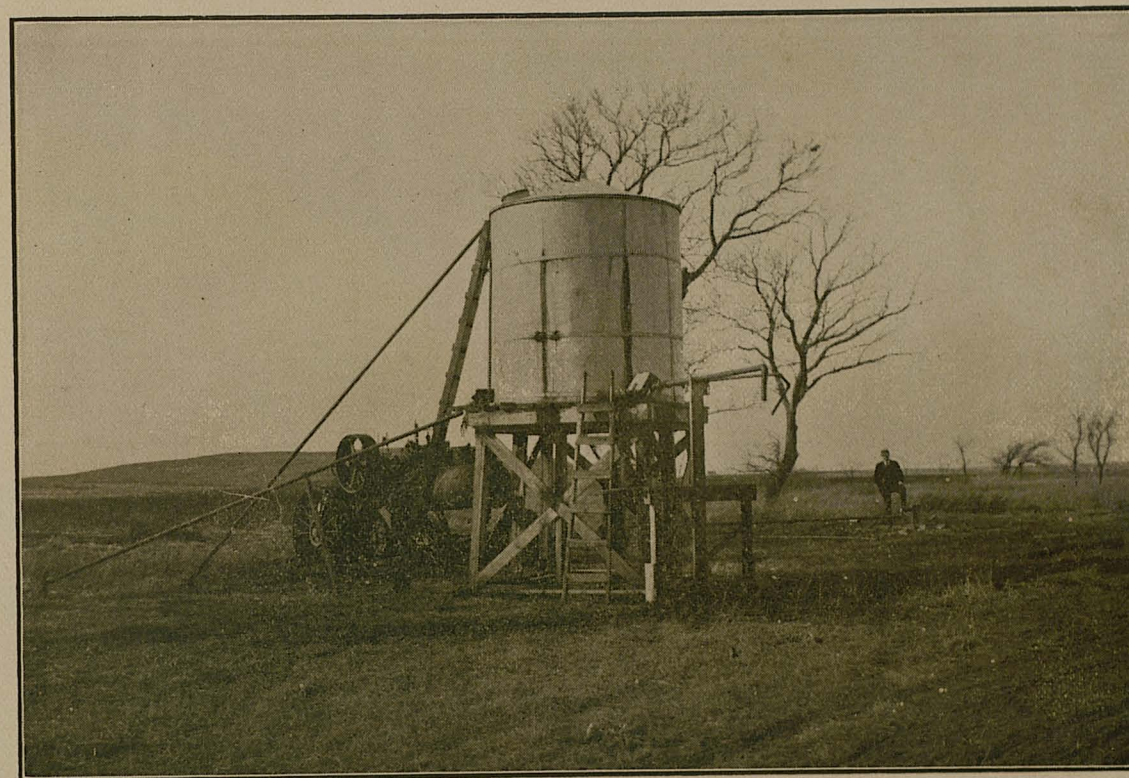
GOTEBO PUBLIC SCHOOL



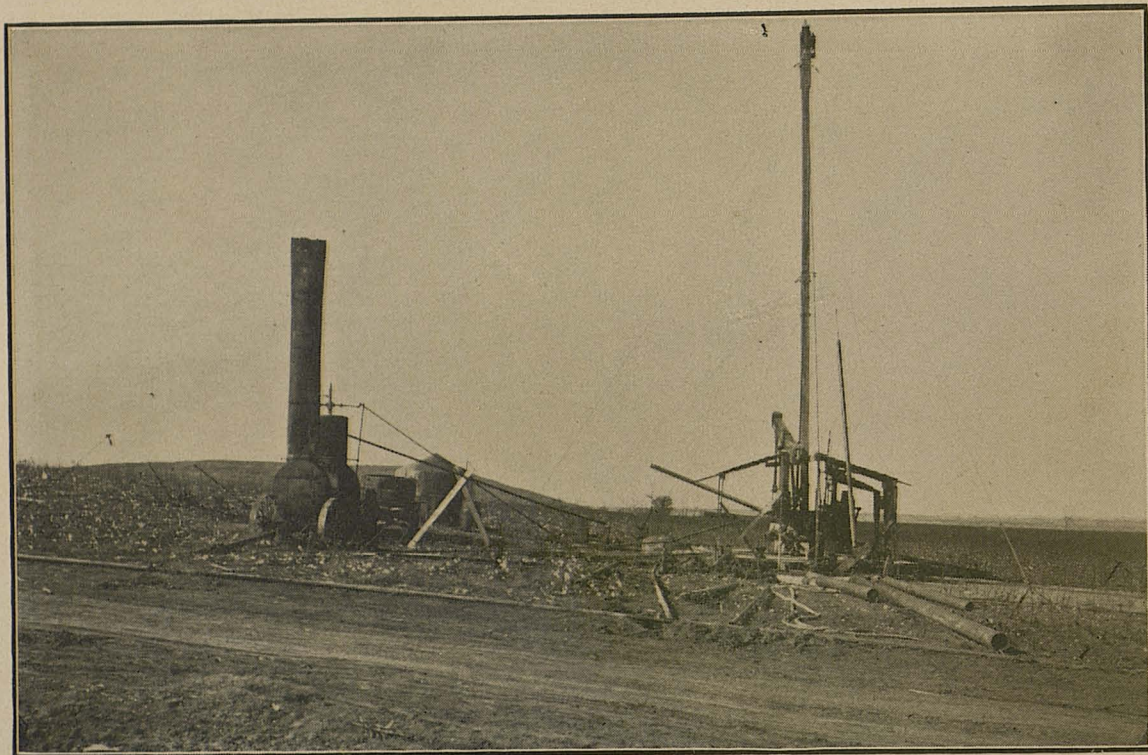
SCENE JAN. 1907 AT GOTEBO
Gotebo Shipped 6,000 Bales of Cotton Season '06-'07



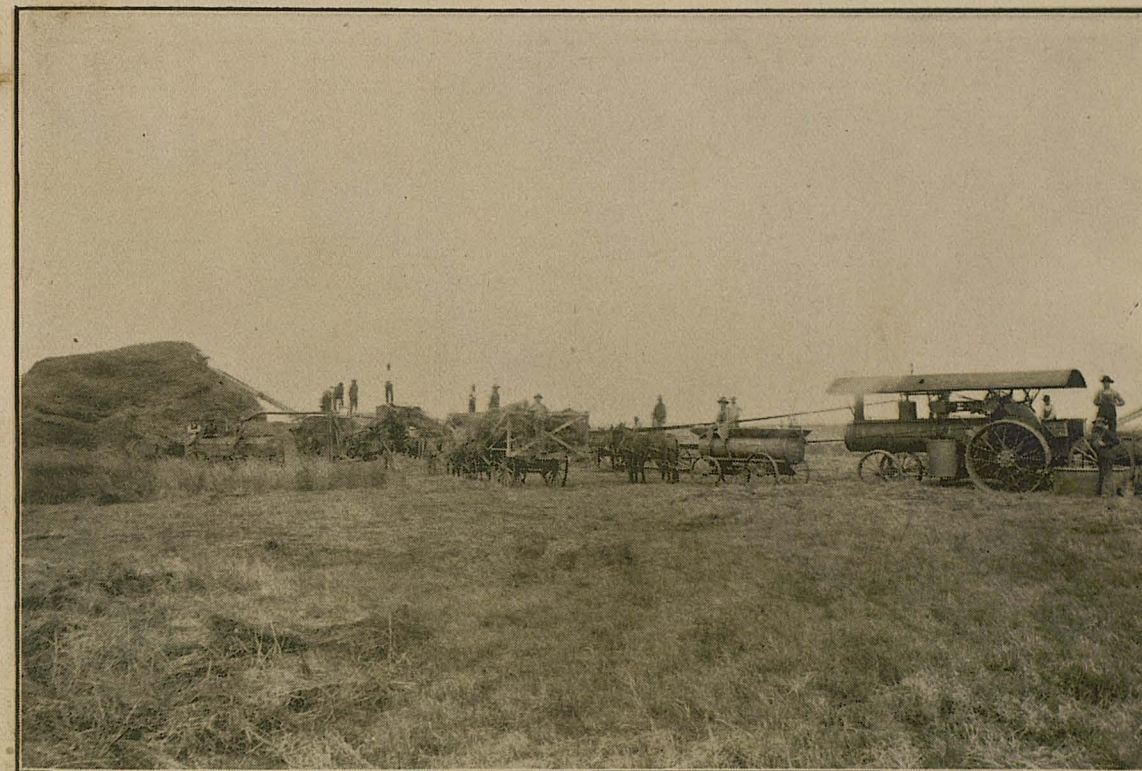
FARMERS' UNION BIG GIN, GOTEBO



OIL WELL THREE-FOURTHS MILES FROM DEPOT.
Producing Twenty-Five to Fifty Barrels Daily. Oil in This Well Was Struck at a
Depth of Four Hundred Feet, Dec. 1906.



GAS WELL PRODUCING GAS ENOUGH FOR CITY OF FIVE THOUSAND INHABITANTS
Struck Jan. 2, 1907. Cut Shows One Day After Capped. Owned and
Operated by White Water Oil and Gas Co.



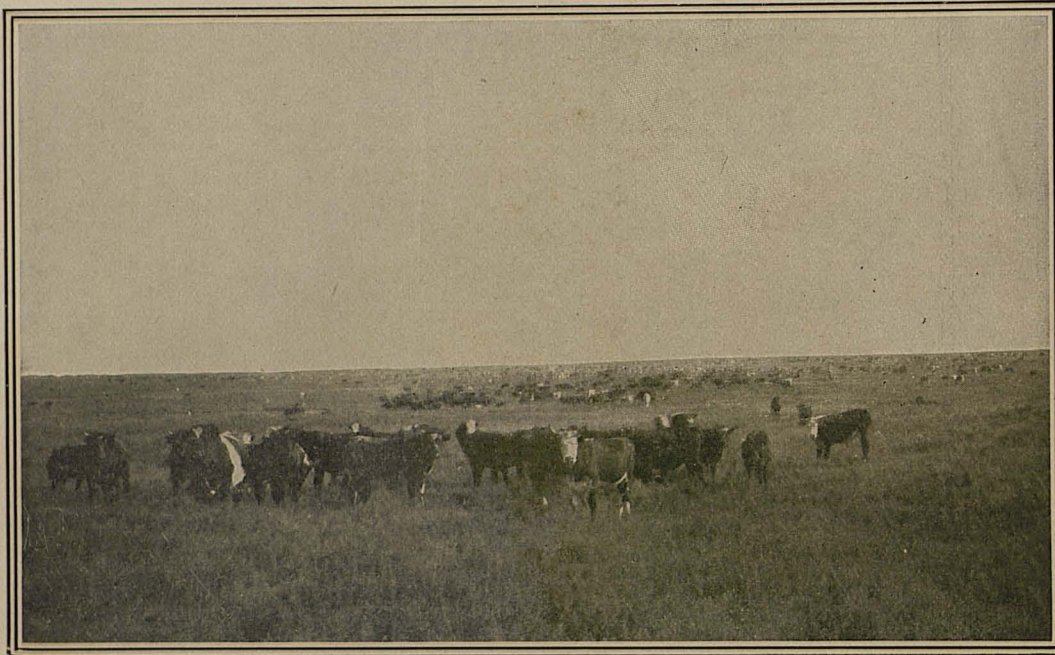
THRESHING SCENE NEAR GOTEBO
Gotebo Marketed 200,000 Bushels of Wheat in 1906



AN OKLAHOMA WHEAT FIELD



CORN SCENE, GOTEBO
Gotebo Marketed About 200,000 Bushels of Corn in 1906



OKLAHOMA CATTLE RANGE
Gotebo Will Ship from Fifty to One Hundred Cars of Cattle Yearly.



FARM SCENE $\frac{3}{4}$ MILES SOUTH OF GOTEBO
Showing Character of Farm Houses in Surrounding Country



EARLY LAWTON (1901) THE PEOPLE LIVED IN TENTS

Lawton was five years old August 6, 1906. Lawton has seven churches, five banks, four public schools, also a business college with an attendance of 150. Lawton has good waterworks system, lighting plant and sewerage system; four daily newspapers are published in Lawton with a good circulation. She is today a city of 15,000 people.



INDIAN MISSION SCHOOL

Five Miles South of Gotebo, Supported By the United States Government.

SOUTHWEST COLLECTION
Texas Tech University
LUBBOCK, TEXAS 79409

ROCK ISLAND TOWN CO.

P. O. BOX 231

MAIN OFFICE: ROOM 310 REIGLER BUILDING

LITTLE ROCK, ARKANSAS



ADDRESS ALL COMMUNICATIONS TO

J. F. WALLS, President