



TECH TIPS

PETERMAN

ASSOCIATION OF WOMEN STUDENTS

1955-56

TECH TIPS

1955-56



Published by
ASSOCIATION OF WOMEN STUDENTS
Texas Technological College
Lubbock, Texas

Edited by Theta Sigma Phi
Bob Peterman, Cover Design and Drawings



CONTENTS

AWS—Officers	5
From Your Deans	6
We, The Women	7
Organization Chart	8
Your Student Union	9
How Do You Do?	9
Life In These Dorms	11
Dorm Regulations	14
Off On The Right Foot	17
Studying Is Necessary	19
Traditions To Note	20
Clues On Clubs	22
Odds And Ends	27
Activities System	28
Constitution and By-Laws	29

Greetings, Little Sisters,

A friendly welcome awaits you at Texas Tech. The Association of Women Students has published Tech Tips to help acquaint you with our school and its activities.

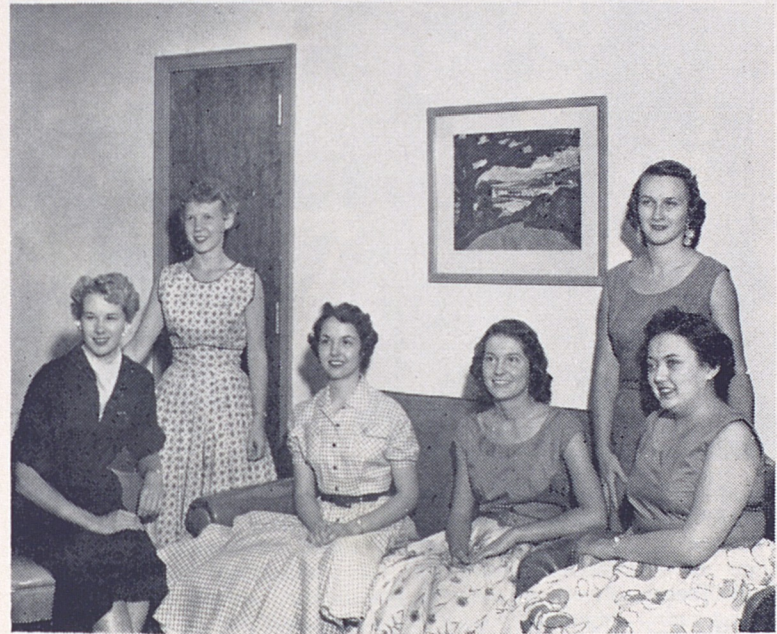
You'll soon be getting letters from your personal AWS big sister, who wants to help you get off to a good start on our campus, but right now we hope this booklet will answer many of your questions.

We are sincerely happy you have chosen Tech as your college home. May you love it as we do and find beyond measure the knowledge and friendship you seek.

See you in September,

Norma Chapman
President A.W.S.

AWS OFFICERS . . .



Left to right: Doris Wampler, secretary; Eileen Jacobson, reporter; Bette McGehee, vice president (Women's Inter-Dorm Council); Norma Chapman, president; Jimmie Faye Maxwell, vice president (Big-Little Sister Program); Janet Yancy, treasurer.

INTRODUCING . . .



Florence Phillips, Dean of Women, left: Mrs. Martha Hall, Assistant Dean of Women, right.

Hello there,

We are so happy that you are going to be with us this year. Our office is in the Administration Building. We hope that you will drop by to see us.

We are looking forward with a great deal of pleasure to knowing each one of you personally.

Sincerely,

Florence Phillips
Dean of Women

Mrs. Martha Hall
Assistant Dean of Women

WE, THE WOMEN . . .

Dear Little Sister,

When you come to Tech you may be assigned to Drane Hall (if you are a freshman), Knapp Hall, or Horn Hall. But, no matter where you live, what your interests are, or the course you are taking—when you enroll, you automatically become a member of AWS—Association of Women Students.

The AWS purpose is to help you and every other Tech coed to get the greatest possible benefit from your college life by promoting unity and fellowship among women students, and providing opportunities for leadership in worthwhile activities on campus. AWS is responsible (in cooperation with the office of the Dean of Women) for setting the standards for living together on campus.

Now let's look at some of the activities sponsored by AWS:

Big Sister-Little Sister Program—You will be adopted as a little sister long before you arrive on campus. Your big sister will write you during the summer and will be on hand in the fall to help you get acquainted with campus life.

Howdy Party—is scheduled for orientation week for you and all new Tech coeds. All the women leaders on campus will be at this party to welcome you and to tell you about extracurricular activities and give you a general idea of coming events you won't want to miss.

Dad's Day—One Saturday in the fall, all Dads are invited to be guests of their daughters where they will attend a football game in the afternoon and open house after the game. This is the day when "Dad is King!"

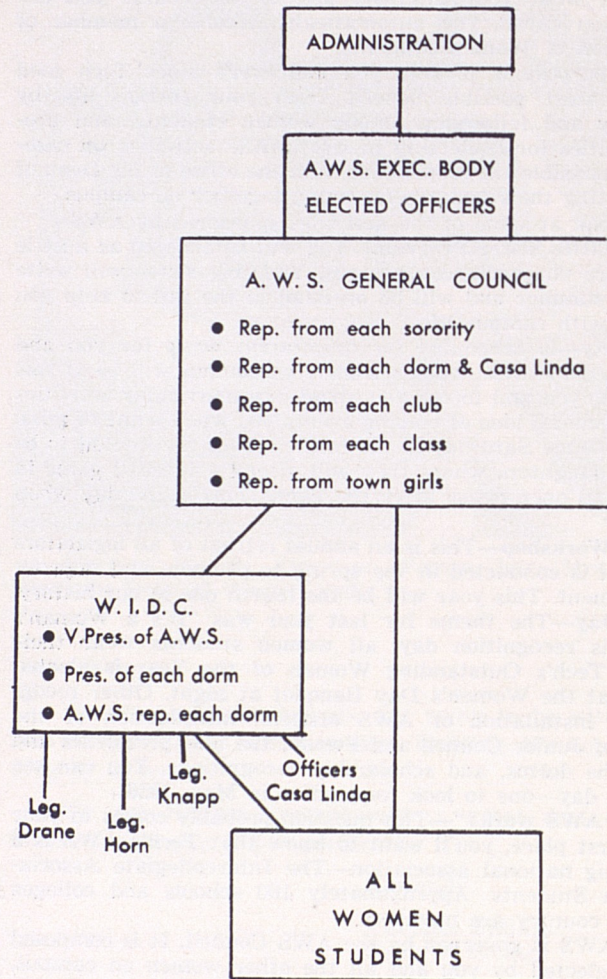
Legislator Workshop—This is an annual retreat of all legislators in the dorms. It is conducted in the spring to promote and improve student government. This year will be the fourth one in our history.

Women's Day—The theme for last year was "It's a Woman's World." On this recognition day, all women students wear their white dresses. Tech's Outstanding Woman of the Year is elected and presented at the Women's Day Banquet at night. Other recognitions include installation of AWS officers, introduction of the new members of Junior Council and Forum, the new presidents and legislators in the dorms, and scholarship recognitions. You can see that it is a full day—one to look forward to in May, 1956!

"How does AWS work?"—This question probably comes to your mind. In the first place, you'll want to know that Tech's AWS is a member of a big national association—The Intercollegiate Association of Women Students. Approximately 100 schools and colleges throughout the country are members.

Our local AWS is governed by the AWS Council. It is composed of six officers elected by you and all the other women on campus, and one representative from each women's organization, and one from each class. Study the organizational chart on page 8

A.W.S. Organization Chart



and you'll get a better idea of the workings of AWS.

That just about covers the information about AWS, and what it does. Please don't hesitate to ask any questions.

Hope this helps,

Your Big Sister.

YOUR STUDENT UNION . . .

Tech's Union Program is carried on entirely by the students of the college and is directed by the program council. Committees fall under areas supervised by coordinators, and each committee works under a committee chairman. Besides the regular round of activities which the Union sponsors — dances, discussion groups, exhibits, etc. — outstanding programs are brought to the campus through the Union.

Future plans include the addition of a wing to the Union which will include a swimming pool, bowling alleys and office space. Mr. Bill Scott is director of the Tech Union, Amil Anderson is assistant director, and Carol Seibert is program director.

Working on the Tech Union committees is a lot of fun and it's also a good way to meet a raft of wonderful people.

HOW DO YOU DO . . .

How do you do, Little Sis,

You've probably heard Tech referred to as a friendly school, and when you get here, you'll hear it many more times. We hope you will keep the friendly hello working over-time as you pass it on. Ours IS a friendly campus, and you now take on the responsibility to do your part to keep it so.

It is, of course, permissible to speak to your classmates without an introduction. Friendly hellos lead to coke dates (as though you didn't know) and coke dates to — well, a variety of things.

We'll wager that one of the best ways to get a lot of introductions is to give a lot of them. And if you aren't quite sure about just "how and when," it might be worthwhile to master the following as your FIRST assignment, and a very important one!

Everyone finds the making and acknowledging of introductions a part of his daily life. In order to meet people with poise, you will need to practice the techniques, and remember, a smile is a real asset to poise and popularity. Here are a few recipes for slick



introductions. Always mention the woman's name first if a woman and man are being introduced. For example: "Jane, may I present Bob Smith? Jane Jones." "Jane, . . . Bob Smith . . . Bob, . . . Jane Jones." In other words, the boy is always presented to the girl.

Always mention the older person's name first if older and younger people are being introduced. For instance, "Mother and Dad, this is Bob Smith." "Uncle John, may I present Jane Jones."

Men always rise for introductions. Women rise only when being introduced to an older woman, unless they wish to show special respect for a distinguished person. Men always shake hands. A woman may shake hands with a man, but she must always offer her hand first.

If you are one of a large group and a stranger is being introduced to you, do not wait to be introduced; speak up and say your name, "I am Jane Jones." This helps to relieve embarrassment of the person trying to remember your name.

When introducing a large group, mention names of men and women in the order they are sitting or standing.

Start the conversation with two strangers by telling something about each one when making the introductions. Say something like this, "Jane Jones comes from Dallas. Weren't you working there last summer, Bob?" This should be enough of a beginning to get them started on a do-you-know tale, but never leave two strangers until their conversation is well under way.

There's a knack to acknowledging introductions, too. You simply say, "How do you do" or "Hello" or "I'm very glad to meet you." "Same here" or "Pleased to meetcha" is out! It is courteous to repeat the name and smile whether or not the new acquaintance makes you feel like doing it.

While we're on the subject of manners, eating a la table is sometimes confusing. At a party or in the dining hall, food, cream, sugar, et cetera, is always passed to the right and it keeps moving in that direction. Of course, no one eats until the hostess takes a bite or until all the girls are seated at the dining hall table.

If in doubt about how to attack any particular dish, watch your hostess. (Do give serious thought to your eating habits and table manners. Many people offend in this way without knowing it.)

And Sis, last but not least, don't ever underestimate what your courtesy and kindness to all older people on the campus will do for you. When at a party or dance, be sure to speak to the chaperone when you arrive and when you leave. Also, do not neglect them during the party; they are people really worth knowing. It is well to remember that chaperones aren't attending "Cum gratis." They may have wanted to spend a quiet evening at home but gave up their time for you. Without them, you wouldn't have your party.

With Love,
Teri Tech

LIFE IN THESE DORMS . . .



Hi, again!

I know you've been wondering if I'd ever get around to telling you about dorm life, so now, a few tips about living in a dormitory with some 320 girls. (Don't let that figure scare you—we girls really aren't so bad.)

Our dorms are governed by a student legislature under the supervision of a trained counselor. This legislature is made up of 24 women, elected by the residents, and is responsible to the Association of Women Students. As soon as you arrive, look for the legislator's insignia on your wing and get to know her. She will be glad to help with your questions and problems. While we're on the subject of legislators in the dorms, I want to mention that in the freshman dorm there are twelve upper-class legislators who will help you get started in student government. After a few weeks, you will elect twelve of your own freshman women to make up the 24.

One of the "musts" is to get acquainted with the dorm staff.

Each dorm is staffed with a Counselor and a Resident Hostess who are interested in your welfare while in college. In addition, there will be graduate or senior assistants working on advanced degrees in counseling and guidance who will be living in the dorm. You'll find them wonderful people and always ready to assist you. Remember it's a fine gesture to introduce parents and dates to your Counselor and Resident Hostess.

Before I go any further with all this "dorm talk," I'd like to introduce you to the names of the Presidents of the dormitories. In Drane (freshman dorm), Janice Long, President. In Horn, Dorcas Morrison, President. In Knapp, Edwina Schovajsa, President. Casa Linda's President is Juanita Haseloff. Casa Linda is the campus co-op house.

Of course, you realize that with some 320 girls living in one place, there are rules and regulations necessary for the welfare and the safety of each student. The **overall AWS regulations are printed on page 14 in this book, so be sure to read them carefully.** As a college woman, you are responsible for knowing them.

Other items about dorm operation you will want to know:

Your mail—each woman has been assigned a mail box. The switchboard operator puts up the mail which is delivered at 12:30 and 4 p.m. Outgoing mail is collected at these hours. Mail addressed to you should include: Your name, box number, dormitory, Texas Tech College, Lubbock, Texas. You will be notified by the Campus Post Office in the Administration Building if you have an insured package, a registered letter, etc.

There are **laundry** and drying rooms in each women's dorm with automatic washers and dryers for your use. If you want to send your laundry out, there is a student who handles the laundry and cleaning concessions.

You are responsible for doing your part to keep the **dormitory clean** and attractive. There is an incinerator box on each wing where you empty waste baskets, trash, etc. Pop bottles should always be replaced in the proper racks. It's a good idea to confer with your roommate before buying irons, ironing boards, brooms, bed-spreads and curtains. You will need to bring your own bed linens, towels and wash cloths.

Magazines in the game room should be replaced in the rack and not taken from the room. When you're last to leave the game room at night, please turn off the lights and radio and close the windows.

All needed **repairs** should be reported to the switchboard office. Leave your name, room number, and the description of the repair. You request electric light bulb replacements in this manner.

A large **storage** room is provided in each dormitory where trunks

and luggage are stored. You check with the Resident Hostess for the key.

You'll need to remember that **Room and Board** is due at the first of each month. A fine is added if bills are not paid by the sixth day of each month at the Office of Room Reservations (just south of College Bookstore.) Charges for radios and electrical equipment will be posted on the bulletin board.

DINING CUSTOMS

Meals are served in the dormitory dining room. The service is cafeteria style and the line moves as quickly as possible. Remember, it is poor taste to cut into the line, or ask anyone to save a place for you. A student hostess will seat you, and if you happen to sit at either end of the table, it will be your responsibility to act as table hostess and see that introductions are made and everyone takes part in the conversation. Meal schedules will be posted on the bulletin boards.

While we're on the subject of dining, you know that shorts, slacks, bluejeans, house shoes, or midriff dresses are absolutely taboo in the dining hall. Saturday is an exception, and jeans may be worn on that day, except football Saturdays. If, on rare occasions when you find it necessary to appear with your hair rolled up, you **must** wear a scarf on your head. On Sundays, appropriate dress will be expected—no rolled up hair or bobby socks. Shorts or bathing suits, naturally, are not worn in the lobby of the dorms. Slacks and jeans are worn only in passing through. They are never worn to classes or the Tech Union. And, of course, indiscreet behavior and language inside the dorm or in the vicinity of the dorm is beneath the dignity of a college woman and is taboo. Be sure to keep your blinds drawn after dark.

Telephones—Local calls are accepted from 8 a.m. to 10 p.m. The pay telephones in the game room are available at all times. Long distance calls must be placed collect and are made on the pay phones in the game room. Telephone manners are so important, so **please** do not monopolize the phones. Always replace the telephone book for the next person! You'll also need to learn the buzzer system:

A Buzzes are:

1 long telephone
1 long, 1 short lounge

B Buzzes are:

2 long telephone
2 long, 1 short lounge

Dormitory social activities are many and varied. They include mixers, exchange dinners, Washbowl Game (a hilarious game between dorms, held each fall), Christmas and birthday parties, All-Dorm dances, etc.

A **General Permission Card** is sent to your parents from the Office of the Dean of Women and will cover most of your permissions. If you have any questions, ask your Counselor. There's one thing you should know. When parents give you special permission to leave early before vacations, it means permission to leave the dorm and

has nothing to do with cutting classes. That is between you and your individual professor.

Many of us have found that **Courtesy is the Secret** for getting along with everyone. Courtesy includes a great many things besides saying "please" and "thank you," although they're mighty important, too. It means keeping quiet hours when your housemates are trying to study, not tying up the phones with lengthy conversations, and remembering that "what's yours is yours . . . and what's mine is mine."

Group living is a game of "give and take." There's responsibility too . . . for closing hours and the like, but the important thing to remember is "do unto others."

Although all these customs and rules may sound confusing now, I hope you will put your very best into, so you can get the most out of, your dormitory days which lie ahead.

Be seeing you real soon!

Teri Tech

DORM REGULATIONS . . .

AWS AND WOMEN'S INTER-DORM COUNCIL

A. Sign Out and Sign In

For safety and service, students are required to sign out if absent from the dormitory after 7:30 p.m. Each girl must sign out and in for herself. In emergency, or if you have failed to sign out, you may call your Counselor or Resident Hostess to sign you out.

B. Regular Closing Hours

	Mon.-Thurs.	Friday	Saturday	Sunday
Entering Freshmen (until 9 weeks grades)	8:30 p.m.	12 p.m.	1 a.m.	11 p.m.
Upperclassmen	10 p.m.	12 p.m.	1 a.m.	11 p.m.
Seniors	11 p.m.	12 p.m.	1 a.m.	11 p.m.

C. Return from Vacation or Weekend

All students return from vacation or weekend by **11 p.m.** If in an emergency a student is delayed, she should call her Counselor so that she will know the whereabouts of the student.

D. Men Callers

Men callers are permitted in women's dormitories after the lunch hour. Men may come in to the lobby to call for a girl to go to class, et cetera, before that hour—but not before 8 a.m. On Sundays, men may come into the lounge after 8:30 a.m.

E. Weekend and Overnight Sign Outs

A General Permission card signed by your parents must be on file in the dormitory office before you are permitted to sign out

overnight. It is each student's responsibility to know the permissions granted her by her parents.

Students do not spend weeknights out of town or at home except in an emergency and with special permission from parents and dormitory Counselor.

1. Weekend Outside Lubbock

Fill out weekend slip in office before 8 p.m.

Sign out on sign-out card when you leave dormitory.

2. Weekend or Overnight in Lubbock

Contact your Counselor or Resident Hostess before 4 p.m. so that she may call your hostess for confirmation of the invitation.

Students may stay **only** with families or married couples in **Lubbock**.

Student must make sure the hostess has been contacted before she leaves.

Freshmen are permitted one week-night per semester in Lubbock.

Upperclassmen have three week-nights per semester.

F. Special Events

Special permission is given for college events that run past closing hours. If the event is held off campus, students are expected to return to the dormitory 30 minutes after close of the event. For on-campus events, the time is 15 minutes after close of the performance. These functions include: Tech Artist Course, Lubbock Symphony, college plays and sports events.

G. Special Permissions

For all emergencies and special events, students must contact the dormitory Counselor for permission.

H. Quiet Hours

Quiet Hours must be maintained at all times with the following exceptions:

11:30 - 1 p.m. Lunch hour

5:00 - 7 p.m. Dinner Hour

"Reasonable" quiet must prevail during exceptions. Twenty-four hour quiet hours are always maintained during examination periods.

I. WIDC and AWS Regulations Regarding Lateness

Failure to Sign Out three times — one night campus.

Failure to Sign In three times — one night campus.

Up to 15 accumulated minutes lateness — no penalty

Fifteen late minutes — two nights campus (one weekend)

Thirty minutes accumulative lateness — two weekend consecutive campuses

Over 30 minutes lateness per semester — student must appear before the dormitory Legislature.

Other infractions of dormitory regulations — the student must

appear before the dormitory Legislature, or she may be referred to the Dean of Women.

For excessive noise or other infraction of house regulations, three call-downs by legislators — one weekend night campus.

J. Campus

A campus of "restriction of a privilege" begins at 7:30 p.m. and ends at 7 a.m. the following morning.

K. College Customs Regarding Dress

Tech women do not wear bluejeans, slacks or shorts in the dormitory lounge, Student Union, or classrooms.

Students should dress appropriately in the dining hall. Shorts, bluejeans, slacks, brunch coats, or house shoes are not worn. Saturday is "casual dress" day, and jeans and pedal pushers are permitted in the dining hall.

L. Obvious Display of Affection

Obvious display of affection is extremely bad taste and, therefore, is not permitted in the lounge, lobby, or entrances to the dormitory.

M. Telephone

Please limit your calls to five minutes, maximum. Remember, there are no long distance phone calls charged to dormitory telephones.

N. Dormitory Meetings

All residents, including Seniors, are to attend wing and hall meetings.

O. Guests in Dormitories

Students may have guests in dormitories only on weekends (Friday and Saturday nights) except by special permission given by the Assistant Dean of Women. All overnight guests must register with the Resident Hostess in the dormitory, and a guest fee (with the exception of mothers of residents) of 50 cents is charged each guest upon registering. Guests maintain the hours of their student hostess. The hostess is responsible for the conduct of all guests and the hostess is assigned any late minutes her guest might receive. Guests sign in and out of the dormitory on the guest sign-out sheet.

When girls are guests in another dormitory, the same procedure for signing out are to be observed as for any overnight in Lubbock.

P. Regulations Regarding Women Attending Men's Fraternity Rush Parties

Tech women are not permitted to attend Men's Rush parties, except as hostesses. No more than 7 hostesses are allowed at each party. This excludes Tech girls acting as cigarette girls or from participating in entertainment at rush parties.

Women are not permitted to act as cigarette girls at any men's organization on campus.

OFF ON THE RIGHT FOOT . . .



Dear Sis:

If you are in a dither about what clothes to bring, just relax. Tech coeds follow the basic rule of good taste in clothing—simplicity.

Although it is a little warm now to be thinking of sweaters and skirts, it is a good idea to get your clothes lined up before long. You will be able to wear many of your high school clothes at college because the change really isn't so great. Needs in the clothes department differ with various colleges, but I'll try to give you some idea of just what you will need for Tech.

CLASSES: Casual sports clothes are always worn for class. Basic skirts and sweaters which can be changed and worn to form several outfits are a good buy. Our late summer weather usually lasts for several weeks into fall, so several blouses are needed then. We seem to be particularly fond of man-tailored shirts in solid colors and in prints. Dark cottons are good to wear for those first few weeks, too. Flats and loafers are always worn to class. Separate collars and bright colored scarves are good accessories. Belts also seem to be in style now. With several accessory changes, basic clothes can carry you a long way.

DATES: Your dark cottons and lightweight wool dresses with flats will always do on an informal date—they will always take you to the show, too. These dresses are also fine for the Union dances

and the Howdy Dance. Skirts and sweaters are more appropriate for pep rallies. A good basic suit is a must. It will go to football games, receptions, and church. With the right accessories it can serve all these purposes. Hats are not necessary for football games except for Homecoming. They are usually worn then. Hats, purses, and gloves are worn to receptions, teas, and church.

SPECIAL CLOTHES: You will want a few "dressy" outfits. You will probably want a basic dress that can be subject to accessory changes. Dressy skirts and sweaters are good for parties, as are knit suits. Both ballerina and full-length formals are in good taste here. Before you stock up on formals, remember that nobody here has seen the dress you wore to the Junior-Senior prom at home, so bring it along.

The weather is sometimes a bit changeable, so it is a good idea to have a light jacket (this can serve for an evening wrap also) and a heavy coat for the colder months. It seldom rains here, but you might put in a rain coat, not an elaborate one because chances are you will not have occasion to wear it, but you never can tell. Rain boots double for wear on snowy days, so bring them along.

Head scarves are a must. You can brighten the sandstormy days by having several colorful head scarves.

PICNICS: Blue jeans and shorts are usually worn on picnics, and treader pants seem to be a favorite now. Bermuda shorts have appeared quite often this past year. They are worn with or without knee-length socks. Traditionally, Levis, shorts, et cetera, are not worn to class or in the dining hall.

DORM: For studying or lounging in the dorm, anything considered comfortable is worn. Shorty pajamas, dusters, and housecoats seem to be most popular. These can also be worn to dormitory meetings after closing hours.

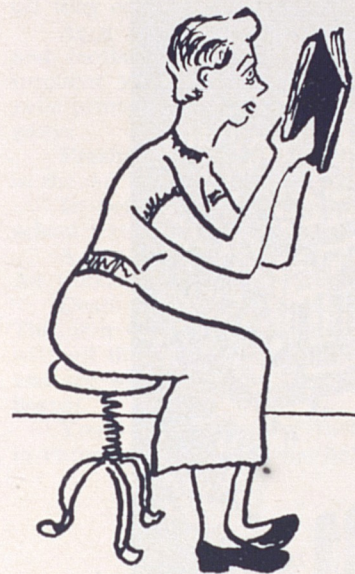
The clothes mentioned will take you to most of the college activities, as well as to the Homecoming Parade, the bonfire after the pep rally, the Alpha Lambda Delta reception for women newcomers, and to church activities.

Later in the semester there will be Club Scarlet, mock nightclub where Tech's most handsome man is selected, basketball games, and the Union Christmas Dance.

Spring brings more dances, the Engineering Show, Home Economics Open House, and Western Days. There are intramural softball games for men and women, picnics, the Junior-Senior Prom, Inter-Fraternity and Sorority sing, Senior Carnival, and Sophomore Hodge-Podge to mention only a few of the outstanding events. Every day is the time to go to the Union Building for coffee, programs and the many dances. Artists courses are also scheduled year-round.

Your wardrobe needn't be too expensive or extensive. But remember, no matter what you wear, be yourself and dress for your personality. Your clothes are not the most important thing; you are!

STUDYING IS NECESSARY . . .



Dear Sis:

I remember what a big adjustment it was for me when I came to college and one of the hardest parts to tackle was studying. Thought maybe a few hints might be helpful.

A DAILY SCHEDULE allotting time to study as well as for dates and fun is of valuable service. Some instructors give pop quizzes! So if you want to make fairly good grades, it might be wise to attend classes regularly because cuts chop off your grade. Something I've found priceless when reviewing for a quiz is legible notes. When you go to a class, be prepared to take notes; don't think instructors don't go fast. Sometimes rewriting notes after class is necessary. A good idea for keeping your notes in order is to date them the day of each class meeting.

About the most unacceptable excuse to the pros is the "I didn't know the assignment." They expect you to record assignments (believe me, it is very easy to forget or get mixed up when you just meet classes every other day), so don't be embarrassed to pull out your pencil and write them down where you can find them when preparing for class. If you are absent, it would be wise to contact a member of your class to find out the assignment (as I said before, some of the instructors still like to give pop quizzes or "quickies").

Procrastination is a deadly habit! It is much easier and better to study throughout the semester so that you won't feel the need of cramming during dead and final weeks (from the voice of experience). Information gained from cramming soon leaves again, maybe **before** the quiz.

So long for now. Will write later.

T.T.

TRADITIONS TO NOTE . . .



Dear L. S.

Here I am again. I've been looking over my high school annual today. Those traditions we had bring back memories. I guess your high school has traditions, too. Don't get too wistful about those old frolics, though, cause Tech also has many traditions.

Tech's biggest tradition and the one we are most interested in promoting is the friendly "Howdy" and the smile that accompanies it. You will feel the tone of friendliness when you first arrive at Tech and you will be anxious to join in this spirit of everyday welcome. Howdy Week and Howdy Dances add to this atmosphere, but every day is an unofficial "Howdy Day" at Tech.

Don't be awed at the sight of the green caps bearing the name

(preceded by "Slime") and the phone number of the wearer—they are only the Slime Caps worn by each entering "fish." They must be worn at all times. If the Red Raiders are victorious Homecoming, off they come; if not, they stay on until Thanksgiving.

As a freshman you will sit in a special section at pep rallies and football games and are expected to give out with loud and frequent yells. Learn the words of the Matador Song and other yells printed here so you can sing along with us at the first football game.

Freshmen enjoy the special privilege of ringing the victory bells in the Ad Building tower after each game that the Red Raiders win.

In being a "true Techsan" you'll want to remove that high school letter from your letter jacket if you plan to wear it at Tech.

A big "don't" for freshmen is the Double T bench behind the Ad Building. Only upperclassmen may sit on it.

Dead week comes each semester immediately preceding finals. This is a time for study and restricted social activities; but along with all the work goes a little fun—Tech men pamper their whiskers and see who can grow the longest, ugliest, most artistic or reddest beards.

You'll want to know these songs so you'll feel right at home in entering into Tech's football spirit.

RED RAIDERS

Let's go Red Raiders, let's every man get in the fray,
Let's go Red Raiders, Let's fight until we win the fray,
The Bells of Victory will ring out — and ev'ry heart —

In Texas Tech is gonna sing out.

We'll show the foe — a Matador is master

Oh, we'll show the foe — the meaning of disaster.

They'll turn their backs — to the Texas Red and Blacks —

They'll run like hell, we'll ring the bell

And show who wears the crown,

When those Red, Red Raiders go to town.

Let's give a cheer boys, send it down the field.

Let's make it clear boys, Tech will never yield.

We'll give the Raiders' name greater fame,

We'll show the foe we're out to win the game.

Hi Yi De Yi, Red Raiders on the run,

Vict'ry or die, our battle will be won.

Hi Yi De Yi, they'll soon be bounding back,

Holding on high our glorious Red and Black

THE MATADOR SONG

Fight Matadors for Tech;
Songs of love we'll sing to thee.
Bear our banners far and wide
Ever to be our pride.
Fearless champions ever be;
Stand on heights of victory.
Strive for honor, evermore,
Long live the Matadors!

FIGHT RAIDERS FIGHT

Fight Raiders Fight, Fight Raiders Fight
Fight for the school we love so dearly.
You'll hit 'em high, You'll hit 'em low,
You'll push the ball across the goal —
TECH FIGHT FIGHT!
We'll praise your name, boost you to fame;
Fight for the scarlet and the black.
You will hit 'em, you will reck 'em
HIT 'EM, RECK 'EM, TEXAS TECH!
And the victory bells will ring out.

Hope these traditions are interesting and that you will remember and observe them. Bye for now.

Teri T.

CLUES ON CLUBS . . .

Hi Little Sis,

Okay, you're all registered and enrolled at Tech, now what? There are numerous organizations on the campus in which you can develop new interests and friends. Don't go overboard and join for the sake of joining, but keep your eyes and ears open for your special interest.

Your success in them, as in all your college work, will depend on your willingness to assume responsibility. This includes work on committees and regular attendance at all functions and meetings.

Texas Tech organizations fall into four general categories: honoraries; departmental, divisional and/or professional organizations; mutual interest clubs; and religious organizations.

HONORARY

Membership in honoraries is based on grades, leadership, and service. They are:

Alpha Lambda Delta—national honorary for freshmen women. Requires a 2.5 grade average (B+) in either semester of your freshman year. Purpose is to promote intelligent living and a high standard of learning.

Junior Council—composed of 20 outstanding junior women.

Membership qualifications are a 2.0 grade average and active campus interest. Purpose is to further friendship and stimulate interest in campus activities among women students.

Forum—the highest honor a senior woman can receive. Twenty senior women are selected on the basis of leadership, general ability and high moral character. A grade average of B in at least 90 hours is required. Forum aids all worthy undertakings of the college, and attempts to give every woman a part in extracurricular activities. It is now petitioning Mortar Board, national honorary organization, for membership.

Phi Upsilon Omicron—home economics women in upper two-fifths of their class. They are chosen for scholarship, leadership and character. Promotes friendship, moral and intellectual development of members, and advancement of home economics.

Theta Sigma Phi—honorary and professional for women in journalism. Members selected from junior and senior women majoring in journalism who have a 2.0 grade average in journalism and a 1.0 grade average or higher in other work.

Mu Phi Epsilon—professional organization for women music majors. Furthers the performance of music and recognizes scholarship, musicianship, and leadership. Members must be at least second semester freshmen with a 2.0 grade average.

Phi Gamma Nu—members must be enrolled in the Business Administration Division, have a 1.5 grade average, and have completed six hours in the division. Purposes are closer friendship among members, high standards of scholarship, better participation in school activities, upholding college interests, and promoting interest in civic and professional enterprises.

Tau Beta Sigma—composed of women who are members of Tech Band. Members must have a 1.0 grade average or higher. Promotes best interest of college bandwomen and encourages better band music in institutions of higher learning.

DEPARTMENTAL

Home Economics—open to any girl registered in a home economics course. Promotes home economics as a profession and fosters friendship.

Major-Minor Club—composed of girls majoring or minoring in physical education and who are interested in the opportunities the field offers.

Others—the organizations listed here are limited to women. You can check your catalog for departmental and divisional organizations that are open to both men and women.

MUTUAL INTEREST

Book Reviewers Club—membership is limited to women students who have submitted letters of application and have been approved by a club majority. Acquaints its members with modern literature and strives for appreciation of all literary arts.

Modern Dance Club—holds informal dance sessions for women interested in modern dancing. At these sessions students are instructed in all phases of modern dancing. Club seeks a better understanding of and feeling for modern dance.

Rifle Club—meets once each week and offers instruction in rifle shooting to girls interested in the sport. From the membership of the club the Girls' Rifle Team is chosen and competes with girls' teams from other colleges.

Tech Town Girls—an organization for all women students who live in town. It strives to keep its members posted on campus events and to help them become active in all phases of campus life. The group meets at noon twice a month in the Tech Union Building.

WOMEN'S SOCIAL FRATERNITIES

(Coordinated by Panhellenic Council)

Alpha Chi Omega—Alpha Chi, as it is more familiarly known, was founded October 15, 1885, at DePauw University. The badge is a Greek lyre having three required jewels, with the sorority letters emblazoned on a black scroll across the strings of the lyre. The pledge pin is diamond shaped, of scarlet and olive enamel with a lyre in the center. The colors of Alpha Chi Omega are scarlet and olive green; their flower is a scarlet carnation with smilax; their tree is the holly. President is Bernadyne Weatherford.

Alpha Phi—founded October 10, 1872, at Syracuse University. The badge is a plain gold monogram of the two Greek letters Alpha and Phi with the letters AEO in black. The pledge pin is a silver ivy leaf bearing the Greek letters Alpha and Phi. Their colors are silver gray and bordeaux. Sally Wagborne is president.

Delta Delta Delta—Tri Delta was founded on Thanksgiving Eve in 1888 at Boston University. The official badge is a crescent enclosing three pearl stars with Greek letters done in black enamel. A trident is often worn as a guard, and it may have one pearl in the crown. The pledge is one triangle in green enamel within which are three inverted triangles. The colors are silver, gold, and blue; the flower is the pansy; and the tree is the pine. President is Mary Alice Braselton.

Delta Gamma—DG's were founded January 4, 1874, at Oxford Institute. The official badge is an anchor supporting upon its shank a shield of white enamel with the Greek letters Pi Alpha in gold. Delta Gamma's flower is a cream-colored rose; their colors are bronze, pink, and blue. President is Diana Daugherty.

Kappa Alpha Theta—Theta, as it is known, was founded January 27, 1870, at DePauw University. Their badge is a kite, the outer edge of which is gold, and inner portion of which is black enamel. In the middle on a band of white are the Greek letters above which are two diamond stars. The pledge pin is diamond-shaped divided diagonally into two triangles, one of gold, the other of black. Theta's

colors are black and gold; the flower is a black and gold pansy. President is Shirley Chapman.

Kappa Kappa Gamma—Kappa was founded October 13, 1870, at Monmouth College. The chapter at Tech is a continuation of the first social club on the campus. The official badge is a key bearing the Greek letters. The Kappa pledge pin is a Delta of dark blue enclosing a Sigma of light blue; their flower is a fleur de lis. Kappa president is Carolyn Pope.

Pi Beta Phi—Pi Phi was founded April 28, 1867, at Monmouth College. The badge of Pi Phi is a golden arrow bearing the sorority letters on the feather tip with a chain pendant from the shaft. The pledge pin is an arrowhead of gold, bearing a Beta. Their colors are wine and silver blue; their flower is a wine carnation. Pi Beta Phi president is Mary Jane Smith.

Sigma Kappa—founded at Colby College, Waterville, Maine, in November, 1874. The badge is an equilateral gold triangle supporting a raised triangle of maroon enamel bearing the Greek letters Sigma Kappa in gold. The gold pledge pin is a "K" with a serpent entwined through it in the form of an "S". Their colors are maroon and lavender and their flower is the violet. President is Mary Jane Anderson.

Zeta Tau Alpha—Zeta was founded October 15, 1898, at Virginia State Normal School. The pin is an artistically shaped shield, bearing in the center a five-pointed crown flanked by the letters ZTA. The pledge pin is a carpenter's square done in turquoise blue and silver blue enamel. Turquoise and steel gray are their colors; a white violet is their flower. Gale Hays is president.

Since we're talking about social clubs, I thought you might like to know the popular names of the men's fraternities on the campus:

Alpha Tau Omega—ATO
Kappa Sigma—Kappa Sig
Phi Gamma Delta—Phi Gam or FIJI
Phi Delta Theta—Phi Delt
Phi Kappa Psi—Phi Psi
Pi Kappa Alpha—PiKA
Sigma Alpha Epsilon—SAE
Sigma Nu—Sigma Nu
Sigma Chi—Sigma Chi

RELIGIOUS

The spiritual side of your life should not be neglected while you are in college. The religious organizations on the campus seek to help you grow spiritually as you increase your store of learning. These are sponsored by the Lubbock churches, and most of them offer Bible courses for which you can receive college credit. They also conduct morning watch services or evening devotionals which can be an enjoyable and beneficial part of your day. The organizations are:

Baptist Student Union—Baptist. The Student Center is located at 2401 13th Street. It serves as the connecting link between Tech and the Baptist churches in Lubbock. Bible classes are included in the many activities of the Student Center. Bruce McIver is the Bible instructor and student director; Betty Faye Dickey is the assistant director.

Canterbury Club—Episcopal. It is located in St. Paul's Parish House at 16th and Avenue X. Strives to integrate each student into normal parish life. Paul F. Hebbenger is the director.

Bible Chair—Church of Christ. The Bible Chair is located at 2406 Broadway. Under the direction of the elders of the Broadway Church of Christ, it offers Bible courses, daily devotionals and Christian fellowship in its activities. Mont Whitson is the director.

Disciples Student Fellowship—Christian. Student Center located at 13th and Avenue W. Its purpose is to provide activities, worship, and training that will fit the "students of today for the church of tomorrow." Fred Jobs is the campus minister.

Gamma Delta—Lutheran. Meaning knowledge and service, the organization's purpose is to retain students within the church, study the Bible, and maintain and increase Lutheran consciousness on the campus. Meetings are in the Lutheran Church at 22nd and Avenue W. Louis Pabor is the minister.

Newman Club—Catholic. Its purpose is to foster the spiritual, social, and intellectual development of the Catholic students on the campus. Meets at St. Elizabeth's-on-the-Plains, 2305 Main Street. Edward Lyons is the chaplain.

Wesley Foundation—Methodist. Student Center is located at 2420 15th Street. It is the Methodist Church at work on a state college campus. Cecil R. Matthews is the director.

Westminster Student Fellowship—Presbyterian. The Purpose of WSF is to supplement the academic life of students with a well-balanced religious program. Westminster House, the Student Center, is located at 2412 13th Street. Dave Richmond is the director.

I hope these hints on campus organizations have shown you the opportunities for extracurricular activities. Look over the list carefully and then join the ones that appeal to you and for which you'd be willing to work. Maybe someday you'll be a campus wheel if you do your best for your clubs!

Faternally yours,

TT

ODDS AND ENDS . . .

Dear Little Sister,

Well, it's not long until school starts and I imagine you are getting as anxious as I am.

We've talked about AWS, clothes, clubs, dorm life and several other things, but there are still a few items I'd like to mention. A lot of college terms, or "slanguage," have been defined in previous letters, but I've thought of a few other words you might not recognize.

For instance "The Toreador" is the weekly campus newspaper and "La Ventana" is the college yearbook. In the spring you'll be hearing a lot about the Engineers' Show and Open House. These are annual events sponsored by the Engineering Division and the Home Economics Division, respectively.

In regard to classes, I don't believe I've told you the difference between a "cut" and a "walk." A cut is an unexcused absence from a class, and a walk is when the prof announces there will not be a class meeting. Also, Dead Week is a week of restricted social activities immediately preceding final exams.

"The Avenue" is College Avenue, east of the campus; "The Circle" is the Memorial Circle in the center of the campus; and "The Green" is the lawn south of the Administration Building. I've already told you a little about the Union, or the Tech Union Building. The Old Rec Hall is the green barracks (on the west end—the east end is the Faculty Lounge) to the south of the Union. This was the old Recreation Hall which was replaced by the Union.

One thing you'll need to buy if you plan to attend the football games, basketball games, Artists Course events and other campus activities is a Student Activity Ticket. This is your key to all of these events and costs only a nominal sum. Be sure to pay for yours when you register.

Naturally your parents will be interested in your grades, even if you aren't. A freshman progress report is sent to them after the first nine weeks of school. At mid-semester another report goes out. You can get a copy of both by going to the Registrar's Office and asking for it. Don't be bashful, everyone goes to get one.

See you soon,

Teri Tech, Your Big Sister

AWS ACTIVITIES SYSTEM . . .

For the purpose of distributing more evenly the major offices and responsibilities of individual students, AWS has devised the following classification of activities: The combination of points allowed any one individual per semester is 15.

The plan will be in operation on a trial basis for one year at which time a re-evaluation of the plan will be made. This system is by no means a ranking of offices in order of importance, but merely an evaluation of them according to time and responsibility involved.

STUDENT BODY OFFICERS

Student Body President	15
Secretary	10
Vice-President	10
Business Manager	10
Student Council Rep.	7

A. W. S.

President	10
Vice-Presidents	6
Treasurer	6
Secretary	5
Reporter	5

PANHELLENIC

President	8
Rush Chairman	6

SORORITIES

President	9
Pledge Trainer	6
Treasurer	6
Other major offices	5

TOREADOR

Editor	10
--------	----

LA VENTANA

Editor	10
--------	----

VARSITY SHOW DIRECTOR 5

TECH UNION COUNCIL

President of SU Activities	10
Vice-President	6
Secretary	6
Treasurer	6
Other Offices and Committee Chairmen	4

B. S. O.

Chairman	6
----------	---

CLASS OFFICERS

Jr. and Sr.	5
Fr. and Soph.	4

CHEERLEADERS

	7
--	---

DORMITORIES

President	7
A.W.S. Representative	5
Social Chairman	4
Other Offices	3

HONORARY

Forum President	6
Jr. Council President	5
Alpha Lambda Delta Pres.	4

DEPT., RELIGIOUS, and MUTUAL INT. GROUPS

Presidents	6
------------	---

The AWS Activities Committee, subject to the approval of the AWS Executive Council, has jurisdiction over the Activities System and over all points of discussion. In the event a person is already overloaded for the year 1955-56, she must petition to the AWS Activities Committee.

CONSTITUTION AND BY-LAWS*

of the ASSOCIATION OF WOMEN STUDENTS of TEXAS TECHNOLOGICAL COLLEGE

ARTICLE I

Name

SECTION 1. The name of this organization shall be the Association of Women Students of Texas Technological College.

ARTICLE II

SECTION 1. The objects of the Association of Women Students shall be:

1. To act as a coordinating body of all women's organizations in setting the standards for living and working together on the campus.
2. To aim for strong student government and a mutual understanding between administration and students.
3. To strengthen the spirit of unity and fellowship among the women of Texas Tech and to encourage closer relationships between town girls and the girls on the campus.
4. To develop leadership and promote school spirit through the encouragement of women's participation in government and college activities.

SECTION 2. The Association of Women Students shall operate under the powers set forth in this Constitution.

SECTION 3. Additional powers will be granted the council each year according to the progression and capability exhibited by the previous council and Association.

ARTICLE III

Members

SECTION 1. Every woman student enrolled at Texas Tech shall be a member of the Association.

SECTION 2. The Dean of Women and the Assistant Dean of Women shall be ex-officio members of the organization. The Assistant Dean of Women shall act as an advisor to the Association.

SECTION 3. Every woman student of Texas Tech who resides in private homes is also eligible for membership in the 'Town Girls' Club.' (This organization is set up for town girls, in the hope that through such an organization a closer unity can be gained between the town girls and the girls residing on the campus.)

ARTICLE IV

SECTION 1. The following officers shall serve as the executive body of the Association of Women Students and of the AWS general council.

SECTION 2. Officers shall be:

1. President
2. Vice President—Chairman of the Big Sister-Little Sister Program
3. Vice President — Chairman of Women's Inter-Dormitory Council
4. Secretary
5. Treasurer
6. Reporter

SECTION 3. Qualifications for the officers:

1. They shall maintain a 1.5 over-all grade point average for all the time they have been in school and a 1.5 grade point average for the previous semester at Tech.
2. They shall have been enrolled in Tech for at least one semester before being nominated or elected.
3. The president and vice presidents shall have been a member of the AWS Council for at least a year previous to the term they serve as an officer.
4. The president shall be of senior classification when she serves. She must have completed 90 credit hours at the time of taking office in the fall.
5. The vice presidents, secretary, and treasurer shall be at least a junior at the beginning of their term of office.
6. The reporter shall be at least a sophomore at the beginning of her term of office.

*Subject to final approval of Board of Student Organizations.

SECTION 4. Elections

1. The officers shall be elected by the women students of the college.
2. The term of office for officers and members of the AWS Council shall be one school year.
3. A nominating committee composed of graduating members of the council shall prepare a slate of officers to be presented at a nominating assembly, where other nominations of qualified girls may be made from the floor.
4. These names shall be posted one week before a general election during the spring semester, the exact date to be decided by the council.

ARTICLE V

Duties of the Officers

SECTION 1. President

1. It shall be the duty of the president to preside at the meetings of the Association.
2. She shall exercise supervision over the activities of the Association and be alert to the needs of the campus.
3. She is also president of the AWS Council and presides over this governing body.
4. It shall be the duty of the president to see that the provisions of the Constitution are carried out.
5. She shall have the power to appoint the chairman of all committees except those standing committees named in the Constitution.
6. She shall act as an ex-officio member of all committees.
7. She may call a meeting of the council or of the Association with the consent of the secretary. Anything which pertains to the general interests of the organization and which does not encroach upon the other officers will be her duty.

SECTION 2. Vice President—Big Sister-Little Sister Chairman

1. It shall be the duty of the vice president to preside in the absence of the president.
2. She shall assist the president in the direction of the affairs of the Association and the council and shall assume the duties of the president in case the office of the president is left vacant.
3. She shall act as the chairman of the "Big Sister Committee."
4. She shall handle the details in connection with the AWS elections.

SECTION 3. Vice president—Women's Inter-Dorm Council Chairman

1. She shall preside at the meetings of the Women's Inter-Dorm Council.
2. She shall keep a complete record of the activities of the Women's Inter-Dorm Council and shall make regular reports to the AWS Council.

SECTION 4. Secretary

1. It shall be the duty of the secretary to keep the record of the actions and meetings of the Association and the council.
2. She shall take care of all council correspondence.
3. She shall file and preserve all reports and papers.

SECTION 5. Treasurer

1. It shall be the duty of the treasurer to collect all funds and care for all bills authorized by the president.
2. She shall have charge of the Association funds.
3. She shall keep a strict and permanent record of all expenses.
4. She shall make a financial report annually and present a proposed budget for the following year.

SECTION 6. Reporter

1. It shall be the duty of the reporter to report and publicize all activities of AWS through "The Toreador," town papers, campus bulletins, alumni news, and in any other possible way.

ARTICLE VI

AWS General Council

SECTION 1. The purpose of the council shall be to serve as a governing body for the Association and to act as a coordinator of all campus activities engaged in by women students. It shall recommend to the executive council desired changes in the by-laws of the Association.

SECTION 2. The council shall be composed of the six officers elected by the Association of Women Students, one girl elected by each of the four classes, and one representative from each of the women's organizations on the campus. At present these are: Alpha Chi Omega, Alpha Lambda Delta, Alpha Phi, Book Reviewers, Casa Linda, Delta Delta Delta, Delta Gamma, Drane Hall, Forum, Freshman Class, Home Economics Club, Horn Hall, Junior Class, Junior Council, Kappa Alpha Theta, Kappa Kappa Gamma, Knapp Hall, Major-Minor Club, Mu Phi Epsilon,

Panhellenic, Phi Gamma Nu, Phi Upsilon Omicron, Pi Beta Phi, Senior Class, Sigma Kappa, Sophomore Class, Tau Beta Sigma, Theta Sigma Phi, Town Girls' Club, and Zeta Tau Alpha.

SECTION 3. The council shall meet every week unless otherwise stated.

SECTION 4. In case the office of the president is left vacant, the vice president whose duties include the Big Sister-Little Sister program and elections shall become president, and a new vice president shall be elected by the council. If for any reason a vacancy occurs in any of the other elected offices, the council shall elect someone to fill the vacancy.

SECTION 5. Scholastic eligibility for the members of the council shall be a 1.0 over-all grade point average, as well as a 1.0 grade point average for the preceding semester.

SECTION 6. If it is impossible for a council member to attend a meeting, it is permissible to send an alternate.

SECTION 7. The penalty for missing meeting without adequate excuse or the attendance of an alternate shall be one dollar (\$1).

SECTION 8. Members of the council who are absent twice in succession without adequate excuse or the attendance of an alternate shall be considered inactive. The secretary shall notify the organization which they represent that their organization has become inactive and that the organization should send another representative.

SECTION 9. The secretary should be notified by the absent member of the reason for the absence before the next meeting.

ARTICLE VII

Women's Inter-Dorm Council

SECTION 1. Membership

1. The vice president of AWS shall serve as chairman of the Women's Inter-Dorm Council.
2. Other members of the council shall consist of the presidents and AWS representatives of each dormitory and Casa Linda.
3. The chairman shall appoint one of the members to serve as secretary of the council.

SECTION 2. Duties of the Women's Inter-Dorm Council

1. The Women's Inter-Dorm Council shall act in collaboration with the Dean of Women and legislatures on matters of group living.
2. The Women's Inter-Dorm Council shall serve as the policy making body of the women's residence halls, and shall submit recommendations to be approved by the AWS Council and the Dean of Women.

ARTICLE VIII

Amendments

SECTION 1. The Constitution may be amended at a regular meeting of the Council of the Association of Women Students provided that there are two-thirds of the members present and that the amendments have been read at the council meeting preceding the one at which the vote is taken.

SECTION 2. The proposed amendments must be posted immediately after the meeting at which they are presented to the council.

ARTICLE IX

Committees

SECTION 1. The Nominating Committee shall be composed of the graduating members of the council.

SECTION 2. There shall be an Executive Committee composed of all the officers of AWS, and it shall be their duty to organize and eliminate unnecessary details in the material to be covered in council meetings.

SECTION 3. There shall be such other committees as the Association or council may demand.

SECTION 4. The president shall be an ex-officio member of all committees.

ARTICLE X

National Convention

SECTION 1. The expenses of the official delegates to the National Convention shall be paid by the Association of Women Students.

SECTION 2. These delegates shall be the incoming president and the outgoing president or their alternates.

Printed By
THE TEXAS TECH PRESS
Texas Technological College
Lubbock

