

Var. 11°50'

- (1) Begin at the N.W. cor. Sur. 133 Blk. M7.
Thence S at 24 chains Road bra. N.E. and SW at 67 chains, cross Terra Blanco at 72 chs. cross Terra Blanco at 80 chains Mounds & 2 pits N Blk of same the SW of Sur. 133, Blk. M7.
- (2) Thence S at 1 ch. and 20 links cross Terra Blanco at 80 chs. Large MI circular, the SW cor. 131 Blk. M7.
- (1) Thence S 45 E 113 chs. & 6 lks. Md and pts. SW 113 Blk? M7.
- (2) " S 45 E 113 chs. & 6 lks. Md & pts. SW 107 Blk M7
- (3) " S 45 E at 81 chs. cross Frio at 113 chs. & 6 lks. Md & pits, the SW cor. Sur. 93, Blk. M7.
- (4) " S 45 E at 60 chs. cross drain empties into lake to North at 113 chs. & 6 lks. Md & pits the SW Cor. 93, M-7.
- (5) " S 45 E at 34 chs. cross lake at 113 chs. & 6 lks. Md & pits the SW Cor. 73, M-7.
- (6) " S 45 E 113 chs. & 6 lks. Md & pits SW Cor. 59, M-7.
- (7) " S 45 E 113 chs. & 6 lks. Do SW Cor. 53, M-7
- (8) " S 45 E 113 chs. & 6 lks. Do SW Cor. 35, M-7.
- (9) " S 45 E 113 chs. & 6 lks. Do SW Cor. 33, M-7.
- (10) " S 45 E 113 chs. & 6 lks. Do SW Cor. 2, M 10 A
- (11) " S 45 E at 3 chs. cross Road course N & S at 113 chs. & 6 lks. Md & pits SW Cor. 4, M 10 A.
- (12) " S 45 E at 113 chs. cross branch course N at 113 chs. & 6 lks. large earth Monument the SE Cor. Sur. 3, M 10 A.

4222

- (1) Var. 11°45' Thence S. 80 chs. Md & pits the SE Cor. 3, M 10 A.
- (2) " S at 63 chs. Road courses NW & SE at 80 chs. Md & pits, the SE Cor. 3, Blk. M 10 A.
- (3) Thence S 80 chs. Md. & pits, the SE Cor. 12, Blk. 10, A.
- (4) " S at 88 chs. enter lake at 72 chs leave same at 80 chs. Md & pits, the SE Cor. 29, Blk. M 10 A.
- (5) " S 80 chs. Md & Pits SE Cor. 23, Blk. M 10 A.
- (6) " S 80 chs. Md & pits.
- (7) " S 80 chs. Md & pits.
- (8) " S 80 chs. Md & pts.

Vol. 11-201
(1) ...
(2) ...
(3) ...
(4) ...
(5) ...
(6) ...
(7) ...
(8) ...
(9) ...
(10) ...
(11) ...
(12) ...
(13) ...
(14) ...
(15) ...
(16) ...
(17) ...
(18) ...
(19) ...
(20) ...
(21) ...
(22) ...
(23) ...
(24) ...
(25) ...
(26) ...
(27) ...
(28) ...
(29) ...
(30) ...
(31) ...
(32) ...
(33) ...
(34) ...
(35) ...
(36) ...
(37) ...
(38) ...
(39) ...
(40) ...
(41) ...
(42) ...
(43) ...
(44) ...
(45) ...
(46) ...
(47) ...
(48) ...
(49) ...
(50) ...
(51) ...
(52) ...
(53) ...
(54) ...
(55) ...
(56) ...
(57) ...
(58) ...
(59) ...
(60) ...
(61) ...
(62) ...
(63) ...
(64) ...
(65) ...
(66) ...
(67) ...
(68) ...
(69) ...
(70) ...
(71) ...
(72) ...
(73) ...
(74) ...
(75) ...
(76) ...
(77) ...
(78) ...
(79) ...
(80) ...
(81) ...
(82) ...
(83) ...
(84) ...
(85) ...
(86) ...
(87) ...
(88) ...
(89) ...
(90) ...
(91) ...
(92) ...
(93) ...
(94) ...
(95) ...
(96) ...
(97) ...
(98) ...
(99) ...
(100) ...

- (9) Va? 11°45' Thence S 80 chs. md. & pts.
- (12) " S 80 chs. Md. & pts.
- (11) " S 80 chs. Md. & pts.
- (12) " S 80 chs. MD & pts.
- (13) " S 80 chs. Md. & pts.
- (14) " S 80 chs. Md. & pts.
- (15) " S 80 chs. Md. & pts.
- (1) " S 45 E 113 chs. & 6 lks. Md. & pts.
- (2) Thence S 45 E at 28 chs. & 30 lks. Road brs. N&S at 113 chs. & 6 lks. Md. & pts.
- (3) " S 45 E 113 chs. & 6 lks. Md. & pts.
- (4) " S 45 E 113 chs. & 6 lks. Md. & pts.
- (5) " S 45 E 113 chs. & 6 lks. Md. & pts.
- (6) " S 45 E 113 chs. & 6 lks. Md. & pts.
- (7) " S 45 E 113 at 80 chs. cross Running Water branch at 113 chs. & 6 lks. Md. & pts.
- (8) " S 45 E 113 chs. & 6 lks. Md. & pts.
- (9) " S 45 E 113 chs. & 6 lks. Md. & pts.
- (10) " S 45 E 113 chs. & 6 lks. large earth M
- (1) Thence East 80 chs. Mound and pits.
- (2) " " 80 chs. " "
- (3) " " 80 chs. " "
- (4) " " 80 chs. " "
- (5) " " 80 chs. " "
- (6) " " 80 chs. " "
- (7) " " 80 chs. " "
- (8) " " 80 chs. " "
- (9) " " 80 chs. " "
- (10) " " 80 chs. " "
- (11) " " 80 chs. cross Running Water at 80 chs. the large earth monument, the SE cor. Sur. No. 11, Blk JK.

W. D. TWICHELL
AMARILLO, TEXAS

THE STATE OF TEXAS

HALE COUNTY

Survey No. 1

Block No. 81

Grantee: D. & S. E. R. Co.

CORRECTED FIELD NOTES of a survey of 642.5 acres of land situated in Hale County, about 1 1/2 miles S.W. from Plainview, same being Section No. 2, Block 81, Containing 1/4 of 36, issued to D. & S. E. R. Co. by virtue of Title LXXXIX, Chapter One, Revised Civil Statutes of

I, W.D. Twichell, State Surveyor, do hereby certify that the above is a correct copy of the Field Book used by John Summerfield in locating the original corners for this block, same having been furnished to me by John Summerfield in his own handwriting.

State Surveyor.

Bearings and Distances:
W. J. WILLIAMS, Surveyor

Charles Williams }
Tom McGee } Chris Carrick

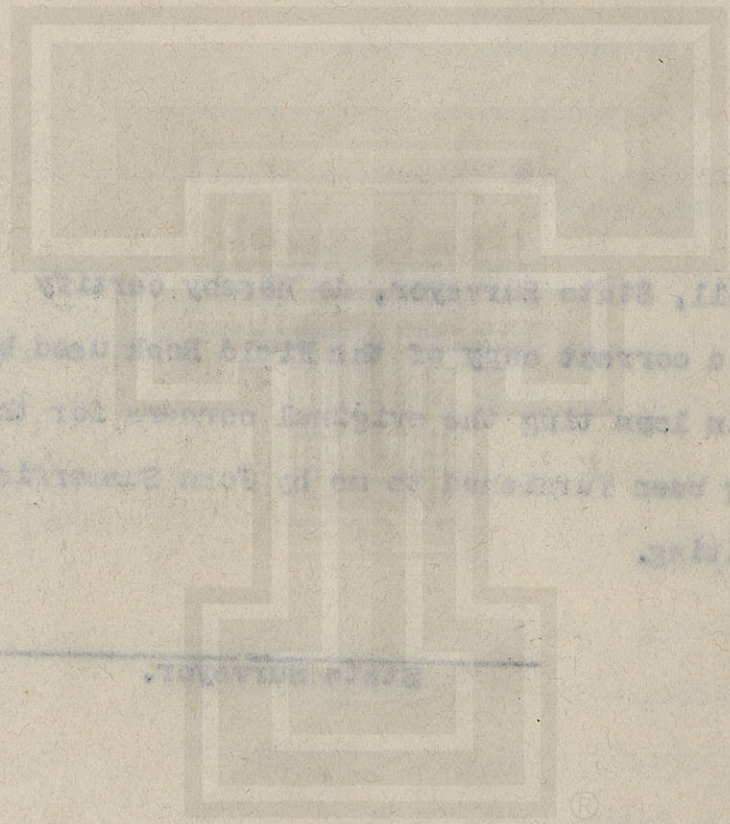
I, W. D. Twichell, do hereby certify that the foregoing re-survey is correct and that was made by me in accordance with law, and that the limits, boundaries and corners with the marks, natural and artificial, are correctly described in the foregoing plat and field notes.

Re-surveyed 11/1/1901

APPROVED:

State Surveyor

Commissioner General Land Office



I, J. D. Twichell, State Surveyor, do hereby certify
that the above is a correct copy of the original book used by
John Sumnerfield in his work on the original survey for this
block, same having been returned to me by John Sumnerfield
in his own handwriting.

State Surveyor.

FOR P
OTH
True Mag
Co., mad
895.
(All cou
el
BEG
marked
2 mil
N.W.
66.3
No. 9
at 190
2 pit
Bea
W.
I, W
it was ma
marks, na
Re-s
APPROVED

THE STATE OF TEXAS

HALE COUNTY

Survey No. 12

Block No. S4.

Grantee: D. & S. E. R. R. Co.

FOR PLAT SEE
OTHER SIDE

CORRECTED FIELD NOTES of a re-survey of 642.8 acres of land situated in Hale County, about 19 miles N. 77° W. from Plainview, same being Section No. 1 Block S4, Certificate No. 121 issued to D. & S. E. R.

Co., made by me as State Surveyor, by virtue of Title LXXXIX, Chapter One, Revised Civil Statutes of 1895.

(All courses compared to a meridian passing through old monument at N. W. corner of Survey No. 12, Block S4 and proved by observing Polaris when at elongation. Azimuth 1° 25' 20".)

BEGINNING AT 2 pits, a cedar post, a small stone and casting, marked 11, the N.W. corner of survey No. 5, Block O-6, same being 2 miles N. and 2 miles 15.4 vrs. E. of old monument the original N.W. corner of survey No. 12, this block, and 2 miles N. and 9 miles 66.3 vrs. W. of old monument, the original N.E. corner of survey No. 9, Block J-K.

Thence W. at 1008 vrs. to 1408 vrs. cross lake, at 1908.7 vrs. set a cedar post, 1 iron and 2 pits.

Thence S. at 1901 vrs. set a cylinder casting and 2 pits, old mound and circular trench bears W. 4.5 vrs.

Thence E. at 1908.7 vrs. set cedar post in field.

Thence N. 1901 vrs. to the place of beginning.

Bearings record true course.

W. J. WILLIAMS, Transitman.

CLAYTON WILLIAMS, } Chain Carriers.
TOM MCGEE, }

I, W. D. TWICHELL, State Surveyor, do hereby certify that the foregoing re-survey is correct and that it was made by me in the field, in accordance with law, and that the limits, boundaries and corners with the marks, natural and artificial, are truly and correctly described in the foregoing plat and field notes.

Re-surveyed 14 day of August, 1909.

APPROVED:

State Surveyor.

Commissioner General Land Office.

File No.

Corrected Field Notes

Survey No.

Filed

190

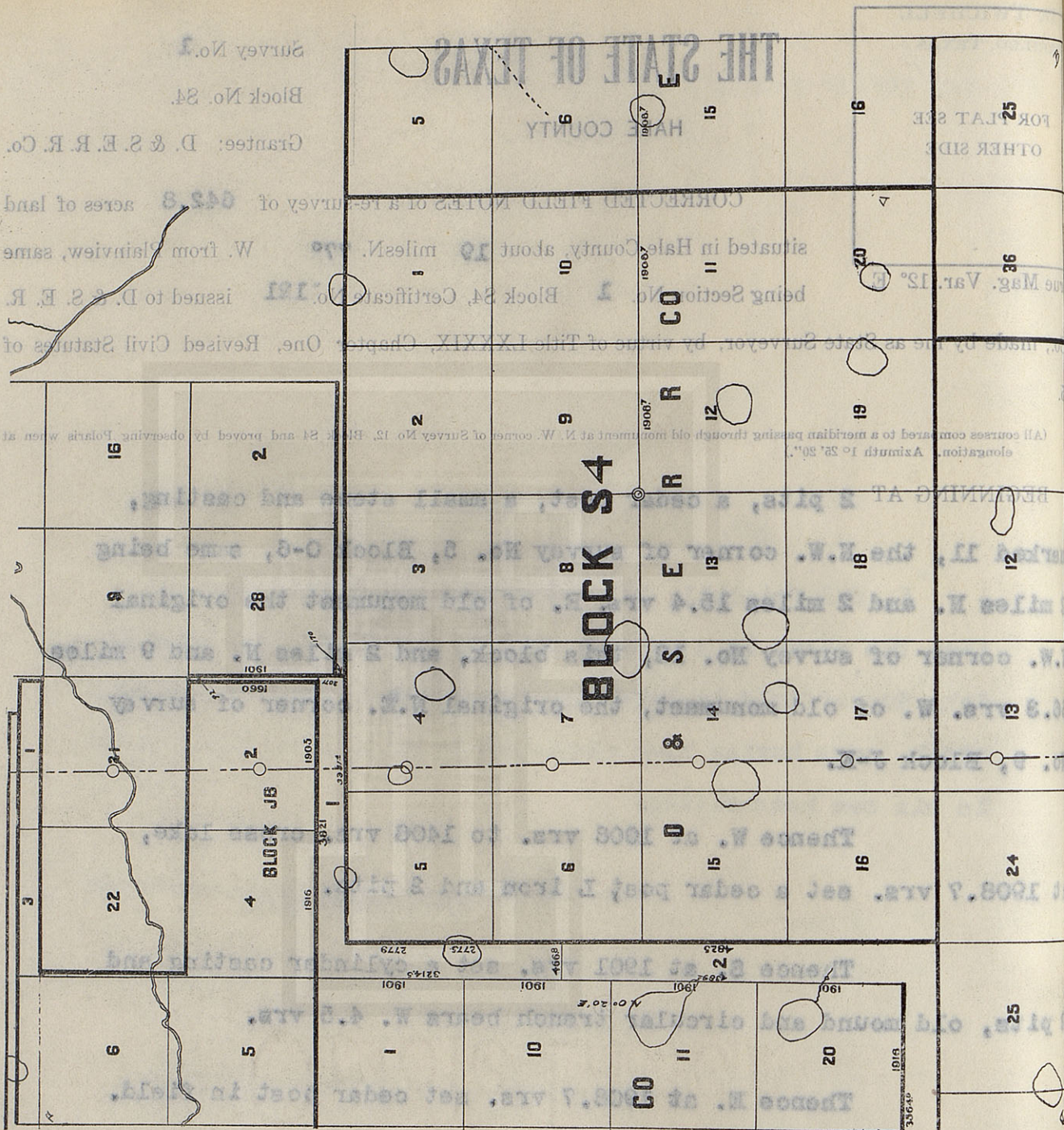
Commissioner.

File Clerk.

Commissioner General Land Office.

Re-surveyed 14 day of August, 1903.
I, W. D. TWICHELL, State Surveyor, do hereby certify that the foregoing re-survey is correct and that marks made by me in the field, in accordance with law, and that the limits, boundaries and corners with the natural and artificial, are truly and correctly described in the foregoing plat and field notes.
W. J. WILLIAMS, Transitman.
Bearings record true course.

Surveyed with Buff Solar Transit No. 6741



THE STATE OF TEXAS

HALE COUNTY

Survey No. 2.

Block No. S4.

Grantee: D. & S. E. R. R. Co.

FOR PLAT SEE
OTHER SIDE

CORRECTED FIELD NOTES of a re-survey of 642.8 acres of land situated in Hale County, about 20 miles N. 78° W. from Plainview, same being Section No. 28 Block S4, Certificate No. 121 issued to D. & S. E. R. Co., made by me as State Surveyor, by virtue of Title LXXXIX, Chapter One, Revised Civil Statutes of

True Mag. Var. 12° E.

1895.

(All courses compared to a meridian passing through old monument at N. W. corner of Survey No. 12, Block S4 and proved by observing Polaris when at elongation. Azimuth 1° 25' 20".)

BEGINNING AT

a cedar post, L iron, two pits set for the N.W. corner of survey No. 1, this block.

Thence W. at 199 vrs., 599 vrs., 1089 vrs. and 1319 vrs. cross roads, at 1908.7 vrs. set a cement rock 10 x 8 x 4" and two pits.

Thence S. at 1901 vrs. set piece cog wheel in 4 very old pits.

Thence E. at 1903.7 vrs. set cylinder casting and two pits from which an old mound and circular trench bears W. 4.5 vrs.

Thence N. 1901 vrs. to the place of beginning.

Bearings record true course.

W. J. WILLIAMS, Transitman.

CLAYTON WILLIAMS, } Chain Carriers.
TOM MCGEE.

I, W. D. TWICHELL, State Surveyor, do hereby certify that the foregoing re-survey is correct and that it was made by me in the field, in accordance with law, and that the limits, boundaries and corners with the marks, natural and artificial, are truly and correctly described in the foregoing plat and field notes.

Re-surveyed 14 day of August, 1909.

APPROVED:

State Surveyor.

Commissioner General Land Office.

File No.

County.

Corrected Field Notes

Survey No.

Filed

190

Commissioner.

File Clerk.

Surveyed with Buff Solar Transit No. 6741

CLAYTON WILLIAMS, Chain Carrier.
TOM MCGEE, Chain Carrier.
I, W. D. TWICHELL, State Surveyor, do hereby certify that the foregoing survey is correct and that the limits, boundaries and corners with the natural and artificial are truly and correctly described in the foregoing plat and field notes.

Commissioner General Land Office.

W. J. WILLIAMS, Transmittan.
Bearings record true course.

Re-surveyed day of August, 1909.

APPROVED:

Re-surveyed

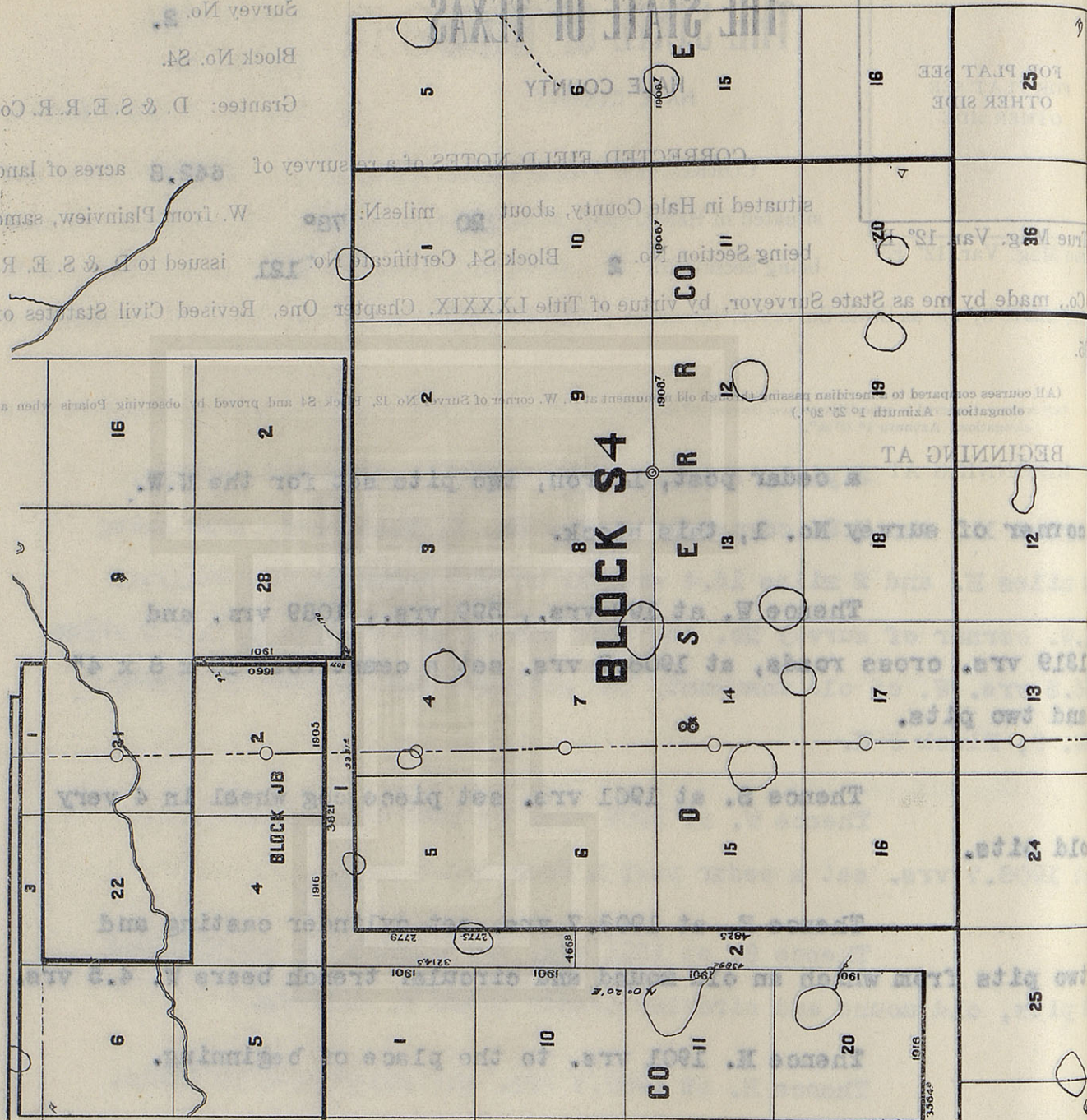
marks, natural and artificial

it was made

I, W. J.

W. J.

Bearings



THE STATE OF TEXAS

HALE COUNTY

Survey No. 3.

Block No. S4.

Grantee: D. & S. E. R. R. Co.

FOR PLAT SEE
OTHER SIDE

CORRECTED FIELD NOTES of a re-survey of 640 acres of land

situated in Hale County, about 21 miles N. 79° W. from Plainview, same

being Section No. 3 Block S4, Certificate No. 60 issued to D. & S. E. R.

R. Co., made by me as State Surveyor, by virtue of Title LXXXIX, Chapter One, Revised Civil Statutes of 1895.

(All courses compared to a meridian passing through old monument at N. W. corner of Survey No. 12, Block S4 and proved by observing Polaris when at elongation. Azimuth $1^{\circ} 25' 20''$.)

BEGINNING AT

a cement rock 10 x 8 x 4" and 2 pits set for the N.E. corner of survey No. 2, this block.

Thence W. at 1901 vrs. set a cement rock 10 x 6 x 4" and 2 pits.

Thence S. at 1901 vrs. set a casting, marked Y-699, and 2 pits.

Thence E. at 460 vrs. cross road, at 1901 vrs. set piece of cog wheel in 4 very old pits.

Thence N. 1901 vrs. to the place of beginning.

Bearings record true course.

W. J. WILLIAMS, Transitman.

CLAYTON WILLIAMS, } Chain Carriers.
TOM MCGEE.

I, W. D. TWICHELL, State Surveyor, do hereby certify that the foregoing re-survey is correct and that it was made by me in the field, in accordance with law, and that the limits, boundaries and corners with the marks, natural and artificial, are truly and correctly described in the foregoing plat and field notes.

Re-surveyed 14 day of August, 1909.

APPROVED:

State Surveyor.

Commissioner General Land Office.

File No. _____

County.

Corrected Field Notes

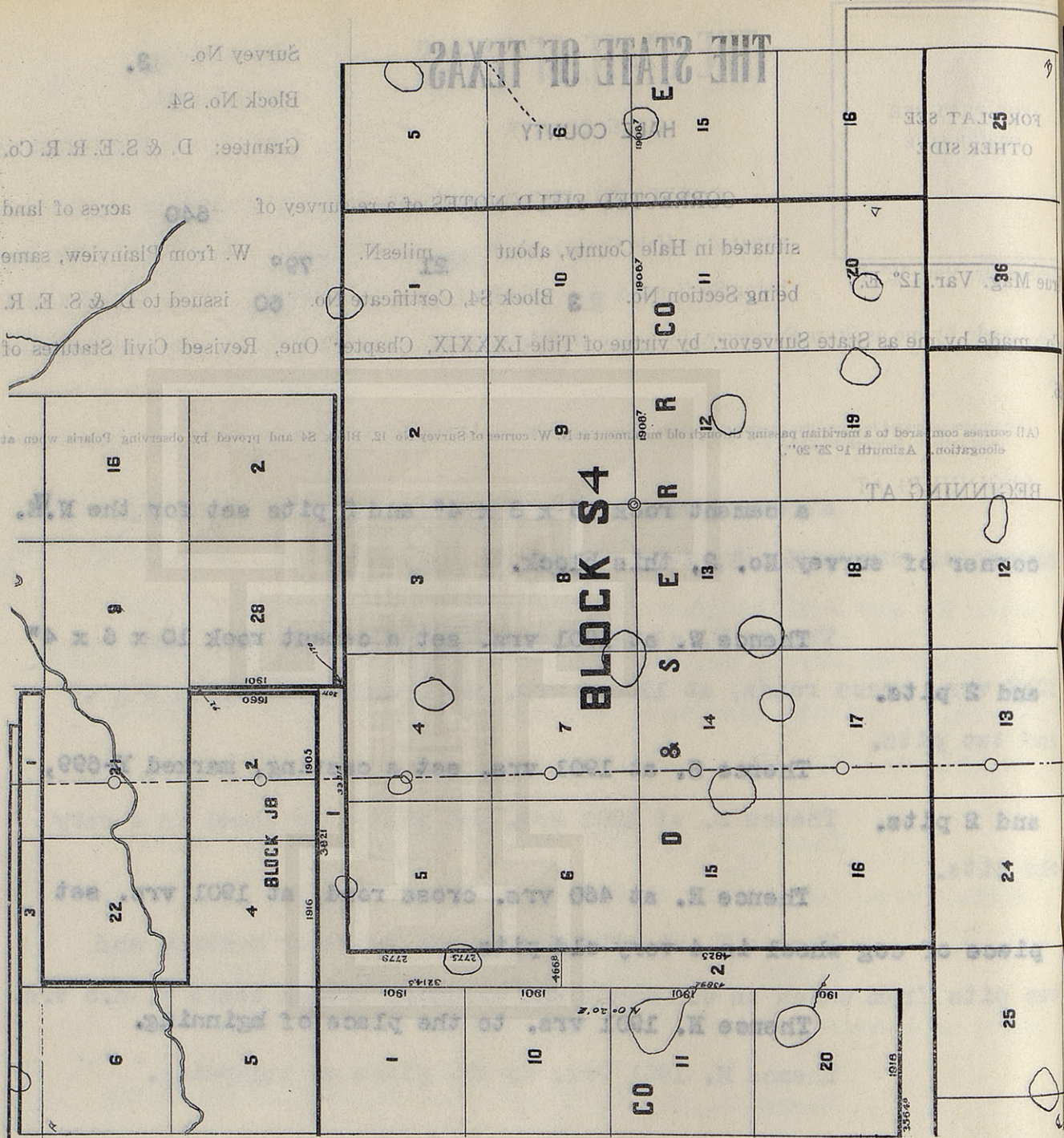
Survey No. _____

Filed _____ 190_____

Commissioner.

File Clerk.

Surveyed with Buff Solar Transit No. 6741



THE STATE OF TEXAS

HALE AND LAMB COUNTIES

514³ ACRES IN HALE COUNTY

125⁷ ACRES IN LAMB COUNTY

Survey No. 4

Block No. 02. S4.

Grantee: D. & S. E. R. R. Co.

FOR PLAT SEE
OTHER SIDE

CORRECTED FIELD NOTES of a re-survey of 640 acres of land situated in Hale and Lamb Counties, about 22 miles N. 30° W. from Plainview, same being Section No. 4 Block S4, Certificate No. 60 issued to D. & S. E. R.

R. Co., made by me as State Surveyor, by virtue of Title LXXXIX, Chapter One, Revised Civil Statutes of 1895.

(All courses compared to a meridian passing through old monument at N. W. corner of Survey No. 12, Block S4 and proved by observing Polaris when at elongation. Azimuth 1° 25' 20".)

BEGINNING AT a cement rock 10 x 6 x 4" and 2 pits set for the NW corner of survey No. 3, this block.

Thence W. at cross county line, at 1901 vrs. set a cement rock 10 x 6 x 4" and 2 pits.

Thence S. at 1901 vrs. set a stone and 4 pits.

Thence E. at 1901 vrs. set a casting marked Y-699 and 2 pits.

Thence N. 1901 vrs. to the place of beginning.

Bearings record true course.

W. J. WILLIAMS, Transitman.

CLAYTON WILLIAMS, } Chain Carriers.
TOM MCGEE.

I, W. D. TWICHELL, State Surveyor, do hereby certify that the foregoing re-survey is correct and that it was made by me in the field, in accordance with law, and that the limits, boundaries and corners with the marks, natural and artificial, are truly and correctly described in the foregoing plat and field notes.

Re-surveyed 14 day of August, 1909.

APPROVED:

State Surveyor.

Commissioner General Land Office.

File No.

County.

Corrected Field Notes

Survey No.

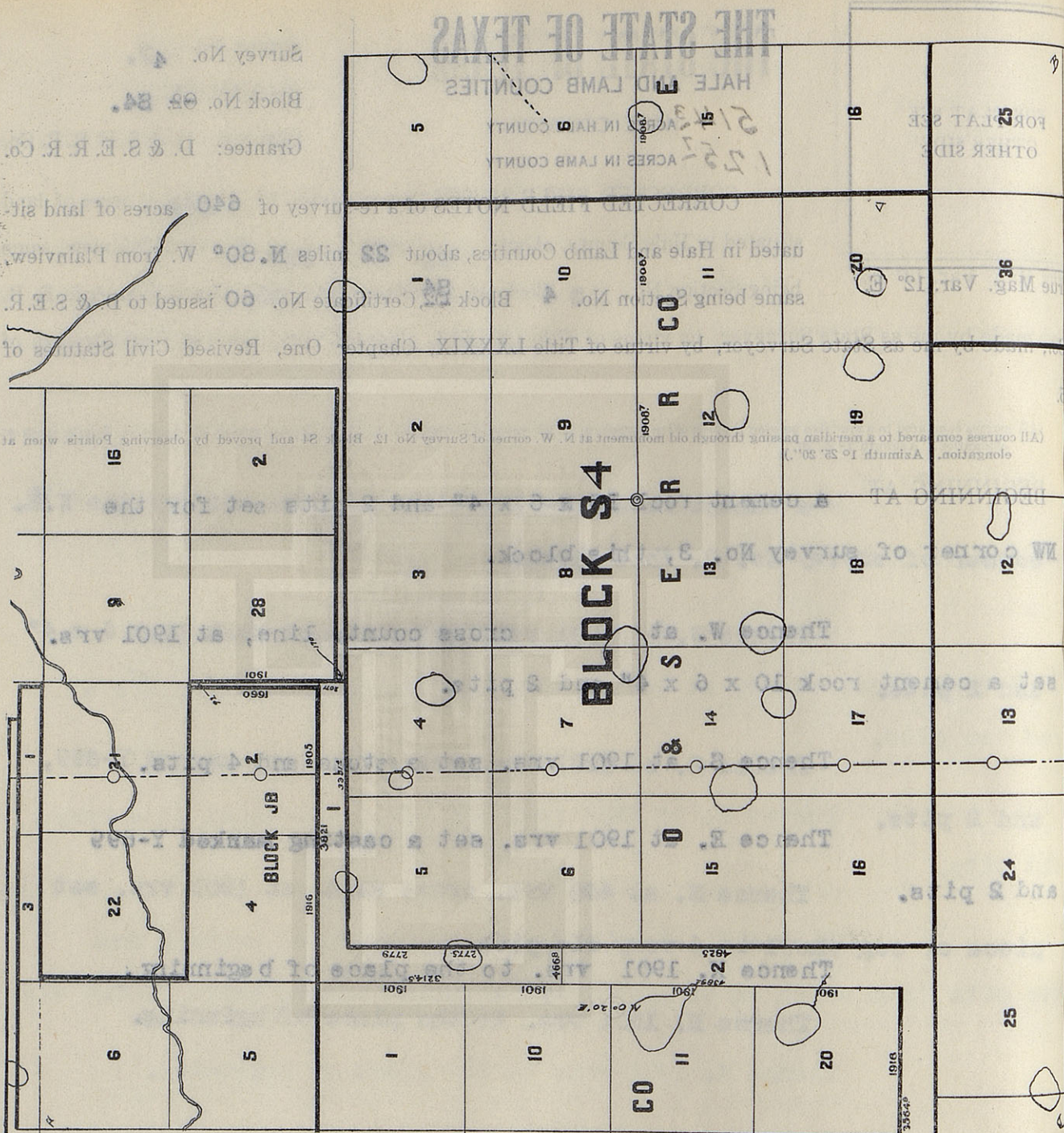
Filed

190

Commissioner.

File Clerk.

Surveyed with Buff Solar Transit No. 6741



File No.

County.

Corrected Field Notes

Survey No.

Filed

190

Commissioner.

File Clerk.

Commissioner General Land Office.

Re-surveyed 14 day of August, 1903.

W. J. WILLIAMS, Transitman.
Bearings record true course.

I, W. D. TWICHELL, State Surveyor, do hereby certify that the foregoing re-survey is correct and that it was made by me in the field, in accordance with law, and that the limits, boundaries and corners with the marks, natural and artificial, are truly and correctly described in the foregoing plat and field notes.

APPROVED:

Re-s

marks, nat

W. J.

Bear

THE STATE OF TEXAS

LAMB COUNTY

Survey No. 5

Block No. S4.

Grantee: D. & S. E. R. R. Co.

FOR PLAT SEE
OTHER SIDE

CORRECTED FIELD NOTES of a re-survey of 640 acres of land situated in Lamb County, about 6 miles N. 24° E. from Olton, same being Section No. 5 Block S4, Certificate No. 61 issued to D. & S. E. R.

R. Co., made by me as State Surveyor, by virtue of Title LXXXIX, Chapter One, Revised Civil Statutes of 1895.

(All courses compared to a meridian passing through old monument at N. W. corner of Survey No. 12, Block S4 and proved by observing Polaris when at elongation. Azimuth 1° 25' 20".)

BEGINNING AT a cement rock 10 x 6 x 4" and 2 pits set for the N.W. corner of survey No. 4, this block.

Thence W. at 1901 vrs. set a casting, 4 pits and a 2 x 4, marked S-S4.

Thence S. at 1800 vrs. to 1600 vrs. cross lake, at 1901 vrs. set a stone and 4 pits.

Thence E. at 1901 vrs. set a stone and 4 pits, the S.W. corner of survey No. 4.

Thence N. 1901 vrs. to the place of beginning.

Surveyed with Bull's Head Transit No. 6741

Bearings record true course.

W. J. WILLIAMS, Transitman.

CLAYTON WILLIAMS, } Chain Carriers.
TOM MCGEE.

I, W. D. TWICHELL, State Surveyor, do hereby certify that the foregoing re-survey is correct and that it was made by me in the field, in accordance with law, and that the limits, boundaries and corners with the marks, natural and artificial, are truly and correctly described in the foregoing plat and field notes.

Re-surveyed 14 day of August, 1909.

APPROVED:

State Surveyor.

Commissioner General Land Office.

File No.

County.

Corrected Field Notes

Survey No.

Filed

Commissioner.

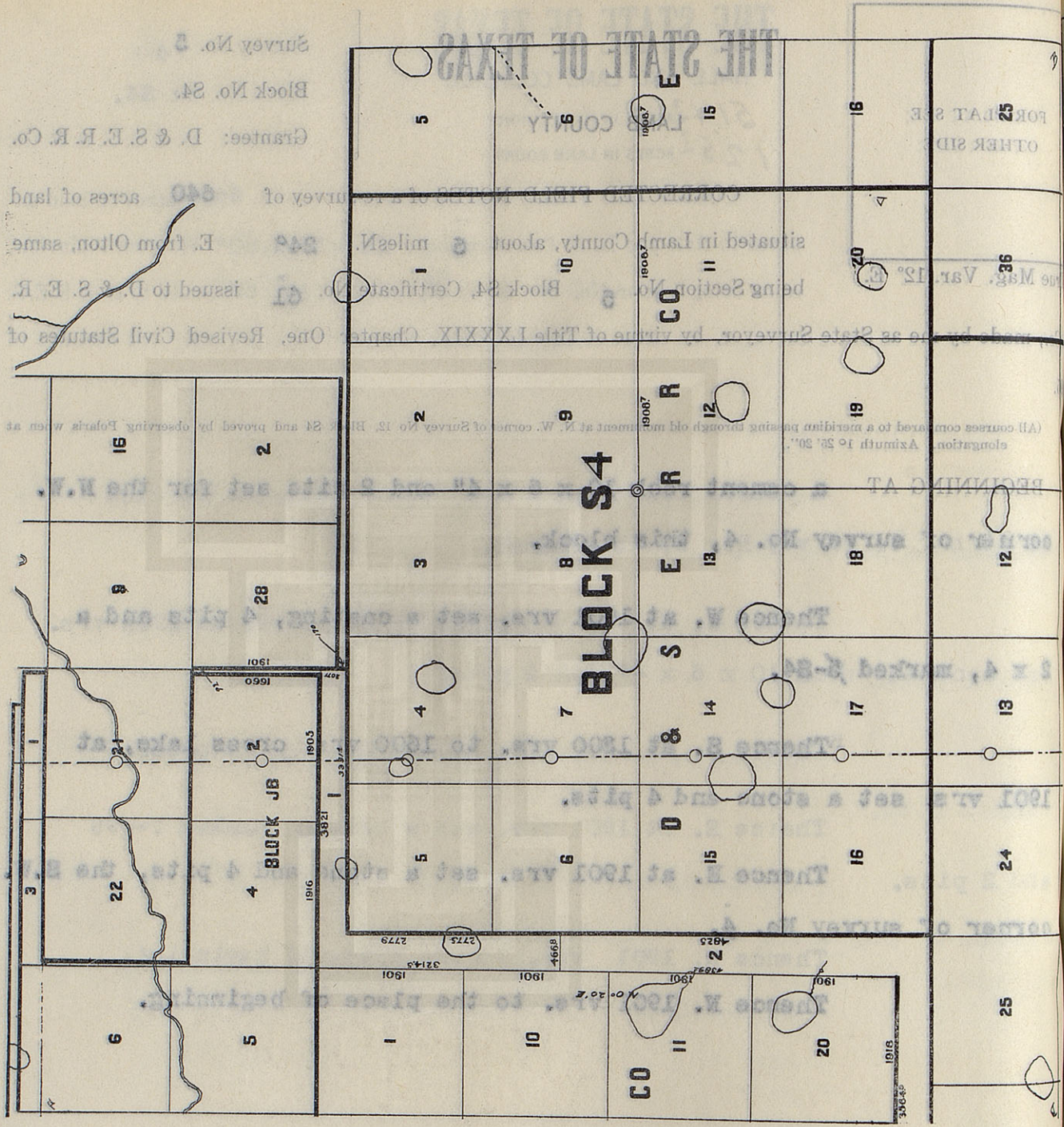
File Clerk.

Surveyed with Buff Solar Transit No. 6741

CLAYTON W. WILLIAMS, Chain Carrier.
Tom McGee, Chain Carrier.
I, W. D. TWICHELL, State Surveyor, do hereby certify that the foregoing survey is correct and that the limits, boundaries and corners with the natural and artificial, are truly and correctly described in the foregoing plat and field notes.

Re-surveyed 14 day of August, 1909.
W. J. WILLIAMS, Transitman.
Bearing record true course.

Commissioner General Land Office.



THE STATE OF TEXAS

LAMB COUNTY

Survey No. 6.

Block No. S4.

Grantee: D. & S. E. R. R. Co.

FOR PLAT SEE
OTHER SIDE

CORRECTED FIELD NOTES of a re-survey of 640 acres of land situated in Lamb County, about 5 miles N. 32° E. from Olton, same being Section No. 6 Block S4, Certificate No. 61 issued to D. & S. E. R.

R. Co., made by me as State Surveyor, by virtue of Title LXXXIX, Chapter One, Revised Civil Statutes of 1895.

(All courses compared to a meridian passing through old monument at N. W. corner of Survey No. 12, Block S4 and proved by observing Polaris when at elongation. Azimuth $1^{\circ} 25' 20''$.)

BEGINNING AT

a stone and 4 pits set for the S.W. corner of survey No. 5, this block.

Thence S. at 873 vrs. pass the southern S.E. corner of survey No. 1, Block G & M, at 1901 vrs. set a stone.

Thence E. at 1901 vrs. set a 1/2" iron pipe and a stone.

Thence N. at 1901 vrs. set a stone and 4 pits.

Thence W. 1901 vrs. to the place of beginning.

Surveyed with Bull's Eye Transit No. 6741

Bearings record true course.

W. J. WILLIAMS, Transitman.

CLAYTON WILLIAMS, } Chain Carriers.
TOM MCGEE. }

I, W. D. TWICHELL, State Surveyor, do hereby certify that the foregoing re-survey is correct and that it was made by me in the field, in accordance with law, and that the limits, boundaries and corners with the marks, natural and artificial, are truly and correctly described in the foregoing plat and field notes.

Re-surveyed 14 day of August, 1909.

APPROVED:

State Surveyor.

Commissioner General Land Office.

File No.

County.

Corrected Field Notes

Survey No.

Filed

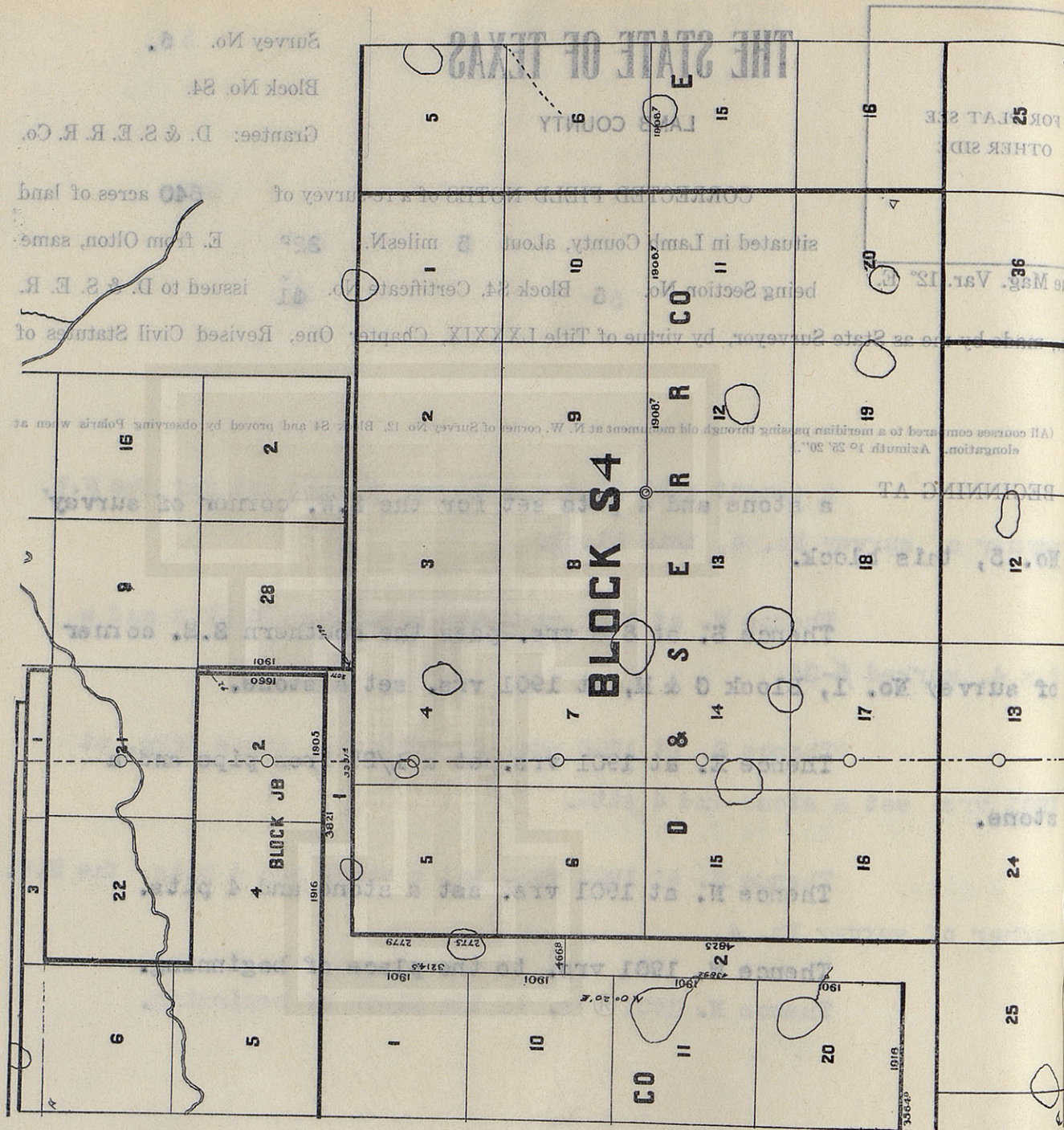
190

Commissioner.

File Clerk.

Commissioner General Land Office.

Surveyed with Buff Solar Transit No. 6741



W. J. WILLIAMS, Transmitter.
Bearings record true course.

Re-surveyed 14 day of August, 1903.
I, W. D. TWICHELL, State Surveyor, do hereby certify that the foregoing is a true and correct copy of the original field notes, and that the limits, boundaries and corners with the same are correct and true.

APPROVED:
Re-surveyed

Bea
W.

I, W
it was made
marks, na

THE STATE OF TEXAS

HALE AND LAMB COUNTIES

509⁷ ACRES IN HALE COUNTY

130³ ACRES IN LAMB COUNTY

Survey No. 7.

Block No. S4.

Grantee: D. & S. E. R. R. Co.

FOR PLAT SEE
OTHER SIDE

True Mag. Var. 12° E.

CORRECTED FIELD NOTES of a re-survey of 640 acres of land situated in Hale and Lamb Counties, about 22 miles N. 81° W. from Plainview, same being Section No. 47 Block S4, Certificate No. 62 issued to D. & S. E. R.

Co., made by me as State Surveyor, by virtue of Title LXXXIX, Chapter One, Revised Civil Statutes of

1895.

(All courses compared to a meridian passing through old monument at N. W. corner of Survey No. 12, Block S4 and proved by observing Polaris when at elongation. Azimuth 1° 25' 20".)

BEGINNING AT

a stone and 1/2" iron pipe set for the S.E. corner of survey No. 6, this block.

Thence E. at 1901 vrs. set a stone and 1/2" iron pipe in lake.

Thence N. at 1901 vrs. set a casting marked Y-699, and 2 pits, the S.E. corner of survey No. 4.

Thence W. at 1901 vrs. set a stone and 4 pits.

Thence S. 1901 vrs. to the place of beginning.

Bearings record true course.

W. J. WILLIAMS, Transitman.

CLAYTON WILLIAMS, } Chain Carriers.
TOM MCGEE.

I, W. D. TWICHELL, State Surveyor, do hereby certify that the foregoing re-survey is correct and that it was made by me in the field, in accordance with law, and that the limits, boundaries and corners with the marks, natural and artificial, are truly and correctly described in the foregoing plat and field notes.

Re-surveyed 14 day of August, 1909.

APPROVED:

State Surveyor.

Commissioner General Land Office.

File No.

County.

Corrected Field Notes

Survey No.

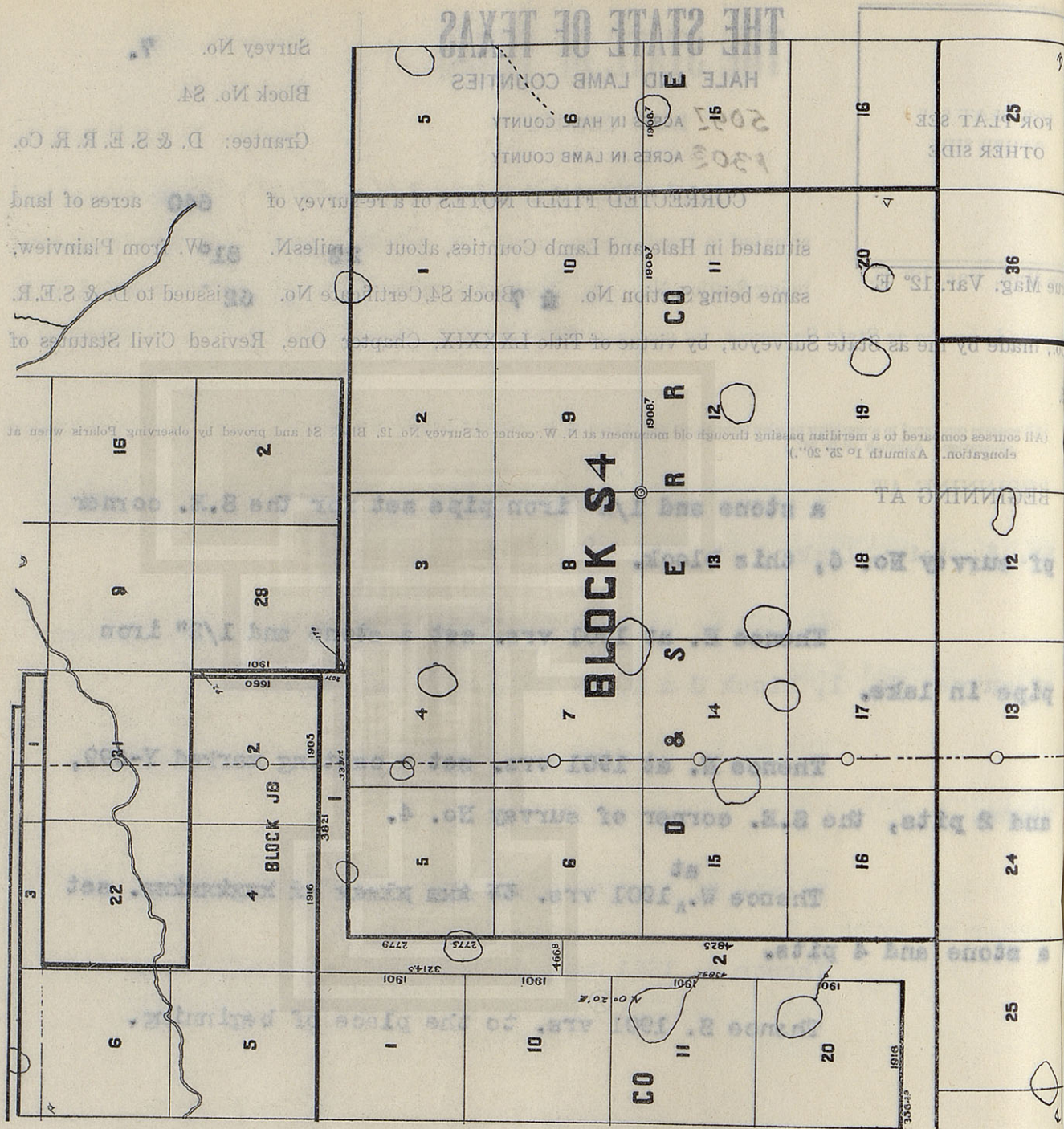
Filed

190

Commissioner.

File Clerk.

Surveyed with Buff Solar Transit No. 6741



Commissioner General Land Office.

Re-surveyed day of August, 1903.

I, W. D. TWICHELL, State Surveyor, do hereby certify that the foregoing re-survey is correct and that

W. J. WILLIAMS, Transcriber.

Bearings record true course.

APPROVED:

Re-

marks, na

it was ma

I, W

W.

Bea

THE STATE OF TEXAS

HALE COUNTY

Survey No. 8.

Block No. S4.

Grantee: D. & S. E. R. R. Co.

FOR PLAT SEE
OTHER SIDE

CORRECTED FIELD NOTES of a re-survey of 640 acres of land

situated in Hale County, about 21 miles N. 81° W. from Plainview, same

being Section No. 8 Block S4, Certificate No. 52 issued to D. & S. E. R.

Co., made by me as State Surveyor, by virtue of Title LXXXIX, Chapter One, Revised Civil Statutes of

1895.

(All courses compared to a meridian passing through old monument at N. W. corner of Survey No. 12, Block S4 and proved by observing Polaris when at elongation. Azimuth 1° 25' 20".)

BEGINNING AT a stone and 1/2" iron pipe in lake set for the S.E. corner of survey No. 7, this block.

Thence E. at 1901 yrs. a post set in centre of old monument, made by John Summerfield, the original S.E. corner of this survey, said post is the corner post for fence enclosing this section.

Thence N. at 1901 yrs. set a piece of cog wheel in and 4 very old pits.

Thence W. at 1421 yrs. cross road, at 1901 yrs. set casting marked Y-699, and 2 pits.

Thence S. 1901 yrs. to the place of beginning.

Bearings record true course.

W. J. WILLIAMS, Transitman.

CLAYTON WILLIAMS, } Chain Carriers.
TOM MCGEE.

I, W. D. TWICHELL, State Surveyor, do hereby certify that the foregoing re-survey is correct and that it was made by me in the field, in accordance with law, and that the limits, boundaries and corners with the marks, natural and artificial, are truly and correctly described in the foregoing plat and field notes.

Re-surveyed 14 day of August, 1909.

APPROVED:

State Surveyor.

Commissioner General Land Office.

File No. _____

County. _____

Corrected Field Notes

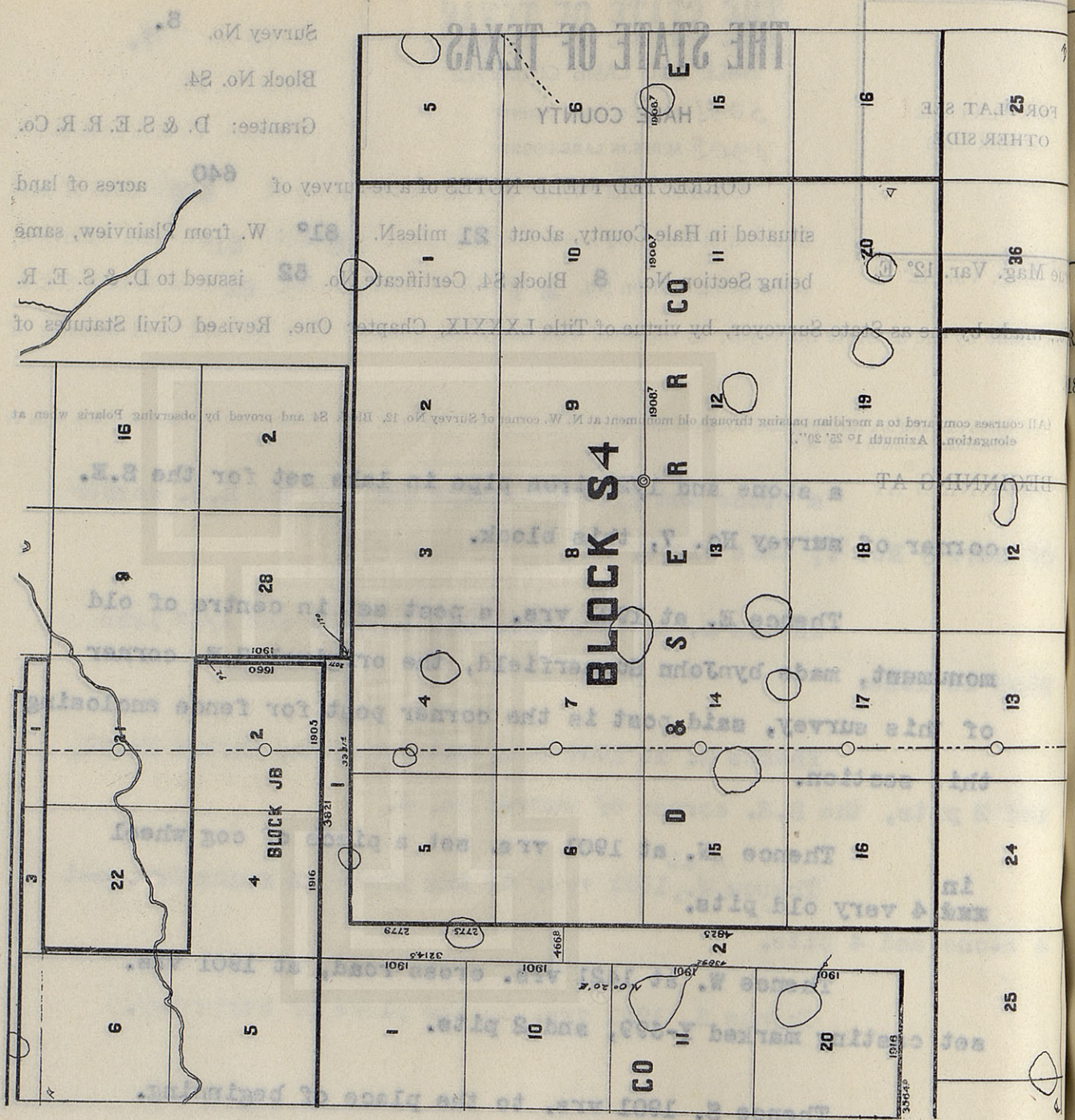
Survey No. _____

Filed _____ 190 _____

Commissioner.

File Clerk.

Surveyed with Buff Solar Transit No. 6741



THE STATE OF TEXAS

HALE COUNTY

Survey No. 9.

Block No. S4.

Grantee: D. & S. E. R. R. Co.

FOR PLAT SEE
OTHER SIDE

CORRECTED FIELD NOTES of a re-survey of 642.8 acres of land situated in Hale County, about 20 miles N. 80° W. from Plainview, same being Section No. 9 Block S4, Certificate No. 63 issued to D. & S. E. R.

True Mag. Var. 12° E.

Co., made by me as State Surveyor, by virtue of Title LXXXIX, Chapter One, Revised Civil Statutes of

1895.

(All courses compared to a meridian passing through old monument at N. W. corner of Survey No. 12, Block S4 and proved by observing Polaris when at elongation. Azimuth 1° 25' 20".)

BEGINNING AT a corner post set in centre of old monument, the original S.E. corner of survey No. 8, this block.

Thence E. at 1908.7 vrs. set 1/2" iron pipe, an old pit, possibly the original S.E. corner of this survey bears W. 1.5 vrs.

Thence N. at 1901 vrs. set a cylinder casting and 2 pits, the S.E. corner of survey No. 2.

Thence W. at 4.5 vrs. cross old mound and circular trench, at 1908.7 vrs. set piece of cog wheel in 4 very old pits.

Thence S. 1901 vrs. to the place of beginning.

Bearings record true course.

W. J. WILLIAMS, Transitman.

CLAYTON WILLIAMS, } Chain Carriers.
TOM MCGEE.

I, W. D. TWICHELL, State Surveyor, do hereby certify that the foregoing re-survey is correct and that it was made by me in the field, in accordance with law, and that the limits, boundaries and corners with the marks, natural and artificial, are truly and correctly described in the foregoing plat and field notes.

Re-surveyed 14 day of August, 1909.

APPROVED:

State Surveyor.

Commissioner General Land Office.

File No.

County.

Corrected Field Notes

Survey No.

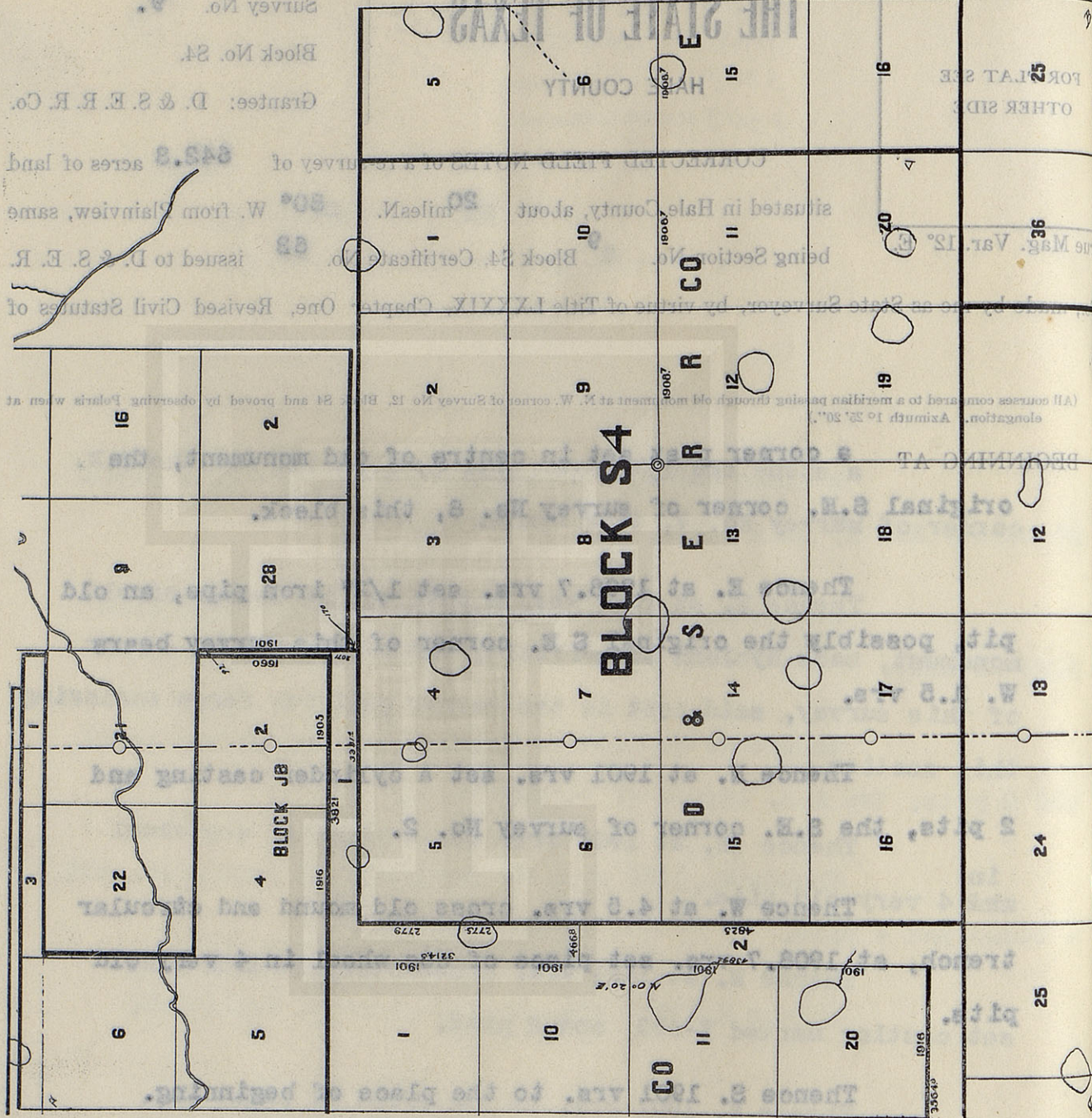
Filed

190

Commissioner.

File Clerk.

Surveyed with Buff Solar Transit No. 6741



Commissioner General Land Office.

Re-surveyed day of August, 1909.

I, W. D. TWICHELL, State Surveyor, do hereby certify that the foregoing re-survey is correct and that the natural and artificial marks, natural and artificial, are truly and correctly described in the foregoing plat and field notes.

W. J. WILLIAMS, Transitman.

Bearings record true course.

THE STATE OF TEXAS

HALE COUNTY

Survey No. 10.

Block No. S4.

Grantee: D. & S. E. R. R. Co.

FOR PLAT SEE
OTHER SIDE

CORRECTED FIELD NOTES of a re-survey of 642.8 acres of land situated in Hale County, about 19 miles N. 30° W. from Plainview, same being Section No. 10 Block S4, Certificate No. 63 issued to D. & S. E. R.

R. Co., made by me as State Surveyor, by virtue of Title LXXXIX, Chapter One, Revised Civil Statutes of 1895.

(All courses compared to a meridian passing through old monument at N. W. corner of Survey No. 12, Block S4 and proved by observing Polaris when at elongation. Azimuth 1° 25' 20".)

BEGINNING AT a 1/2" iron pipe set for the S.E. corner of survey No. 9, this block, an old pit, possibly the original S.W. corner of this survey, bears W. 1.5 vrs.

Thence E. at 1908.7 vrs. set 1/2" iron pipe from S.E. which an old pit possibly the original corner of this survey bears W. 2 vrs.

Thence N. at 422 vrs. pass 12.5 vrs. E. of an old well, at 1901 vrs. set a cedar post in field, the S.E. corner of survey No. 1, this block, and S.W. corner of survey No. 5, Block O-6.

Thence W. at 1903.7 vrs. set cylinder casting and 2 pits from which old mound and circular trench bears W. 4.5 vrs.

Bearings record true course

W. J. WILLIAMS, Transitman.

Thence S. at 1901 vrs. the place of beginning.

CLAYTON WILLIAMS, } Chain Carriers.
TOM MCGEE.

I, W. D. TWICHELL, State Surveyor, do hereby certify that the foregoing re-survey is correct and that it was made by me in the field, in accordance with law, and that the limits, boundaries and corners with the marks, natural and artificial, are truly and correctly described in the foregoing plat and field notes.

Re-surveyed 14 day of August, 1909.

APPROVED:

State Surveyor.

Commissioner General Land Office.

File No. _____

County. _____

Corrected Field Notes

Survey No. _____

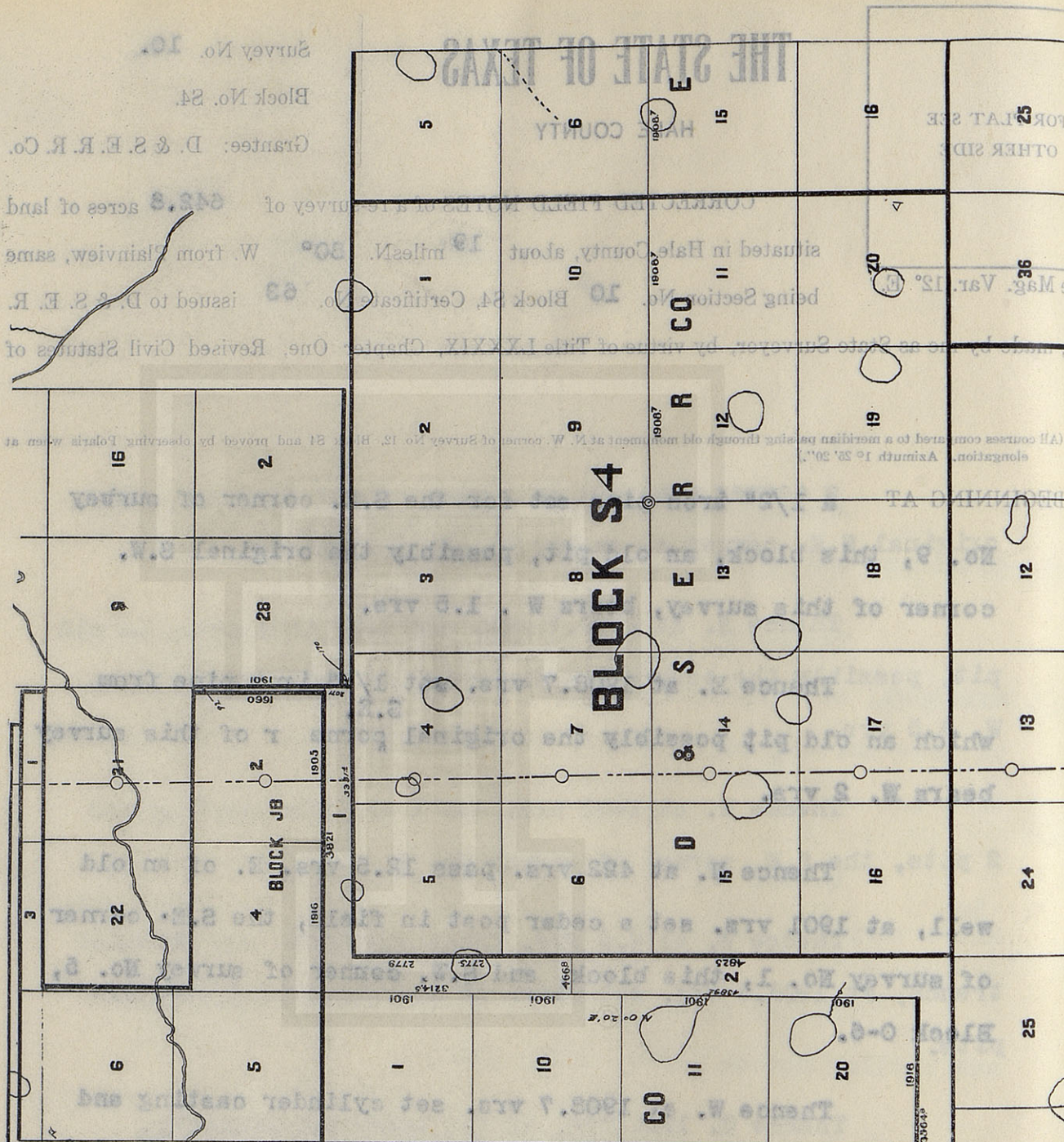
Filed _____ 190 _____

Commissioner. _____

File Clerk. _____

Surveyed with Buff Solar Transit No. 6741

CLAYTON W. WILLIAMS, Chain Carrier.
I, W. D. TWICHELL, State Surveyor, do hereby certify that the foregoing is a true and correct copy of the original field notes and that the same were made by me in the field, in accordance with law, and that the limits, boundaries and corners with the marks, natural and artificial, are truly and correctly described in the foregoing field notes.
Re-surveyed _____ day of August, 1903.
APPROVED: _____
W. J. WILLIAMS, Transmittal.
Bearing record true course
Thence S. at 1901 vrs. the place of beginning.



THE STATE OF TEXAS

HALE COUNTY

Survey No. 11.

Block No. S4.

Grantee: D. & S. E. R. R. Co.

FOR PLAT SEE
OTHER SIDE

CORRECTED FIELD NOTES of a re-survey of 642.8 acres of land

situated in Hale County, about 16 miles N. 82° W. from Plainview, same
being Section No. 11 Block S4, Certificate No. 64 issued to D. & S. E. R.

R. Co., made by me as State Surveyor, by virtue of Title LXXXIX, Chapter One, Revised Civil Statutes of
1895.

(All courses compared to a meridian passing through old monument at N. W. corner of Survey No. 12, Block S4 and proved by observing Polaris when at
elongation. Azimuth 1° 25' 20".)

BEGINNING AT

a 1/2" iron pipe set for the S.E. corner of survey
No. 10, this block, an old pit, possibly the original N.E.
corner of this survey, bears W. 2 vrs.

Thence S. at 1306 vrs. cross road, at 1901 vrs.
set wagon boxing, the S.W. corner of survey No. 15, Block O-6.

Thence W at 1908.7 vrs. set 2" steel shaft and 4
pits.

Thence N. at 1901 vrs. set 1/2" iron pipe, an old
pit, possibly the original N.W. corner of this survey, bears
W. 1.5 vrs.

Thence E. 1908.7 vrs. to the place of beginning.

Bearings record true course.

W. J. WILLIAMS, Transitman.

CLAYTON WILLIAMS, } Chain Carriers.
TOM MCGEE.

I, W. D. TWICHELL, State Surveyor, do hereby certify that the foregoing re-survey is correct and that
it was made by me in the field, in accordance with law, and that the limits, boundaries and corners with the
marks, natural and artificial, are truly and correctly described in the foregoing plat and field notes.

Re-surveyed 14 day of August, 1909.

APPROVED:

State Surveyor.

Commissioner General Land Office.

File No. _____

Corrected Field Notes

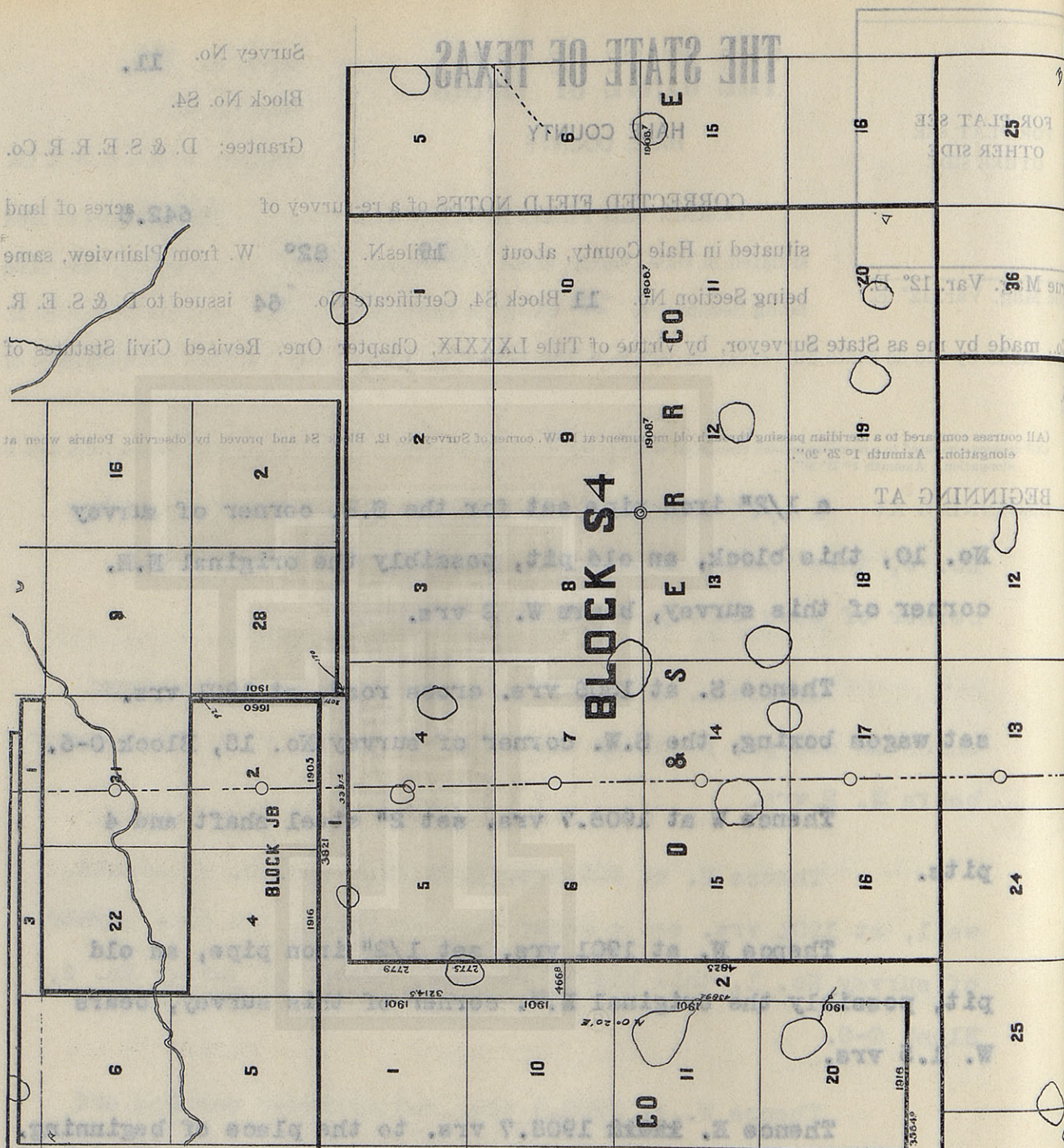
Survey No. _____

Filed _____ 190_____

Commissioner.

File Clerk.

Surveyed with Buff Solar Transit No. 6741



THE STATE OF TEXAS

HALE COUNTY

Survey No. 12

Block No. S4.

Grantee: D. & S. E. R. R. Co.

FOR PLAT SEE
OTHER SIDE

CORRECTED FIELD NOTES of a re-survey of 642.8 acres of land situated in Hale County, about 20 miles N. 83° W. from Plainview, same being Section No. 12 Block S4, Certificate No. 64 issued to D. & S. E. R.

Co., made by me as State Surveyor, by virtue of Title LXXXIX, Chapter One, Revised Civil Statutes of 1895.

(All courses compared to a meridian passing through old monument at N. W. corner of Survey No. 12, Block S4 and proved by observing Polaris when at elongation. Azimuth $1^{\circ} 25' 20''$.)

BEGINNING AT a 2" steel shaft and 4 pits set for the S.W. corner of survey No. 11, this block.

Thence W. at 939 vrs. cross road, at 950.5 vrs. set stake, at 1908.7 vrs. set a cement rock 8 x 6 x 4", and 2 pits.

Thence N. at 1901 vrs. a corner post set in centre of old monument with circular trench, the original N.W. corner of this survey.

Thence E. at 1908.7 vrs. set 1/2" iron pipe, an old pit, possibly the original N.E. corner of this survey, bears W? 1.5 vrs.

Thence S. 1901 vrs. to the place of beginning.

Bearings record true course.

W. J. WILLIAMS, Transitman.

CLAYTON WILLIAMS, } Chain Carriers.
TOM MCGEE.

I, W. D. TWICHELL, State Surveyor, do hereby certify that the foregoing re-survey is correct and that it was made by me in the field, in accordance with law, and that the limits, boundaries and corners with the marks, natural and artificial, are truly and correctly described in the foregoing plat and field notes.

Re-surveyed 14 day of August, 1909.

APPROVED:

State Surveyor.

Commissioner General Land Office.

File No. _____

County. _____

Corrected Field Notes

Survey No. _____

Filed _____ 190 _____

Commissioner. _____

File Clerk. _____

CLAYTON WILLIAMS, Chain Carrier.
Tom McGee, Chain Carrier.
Bearing record true course.

Commissioner General Land Office.

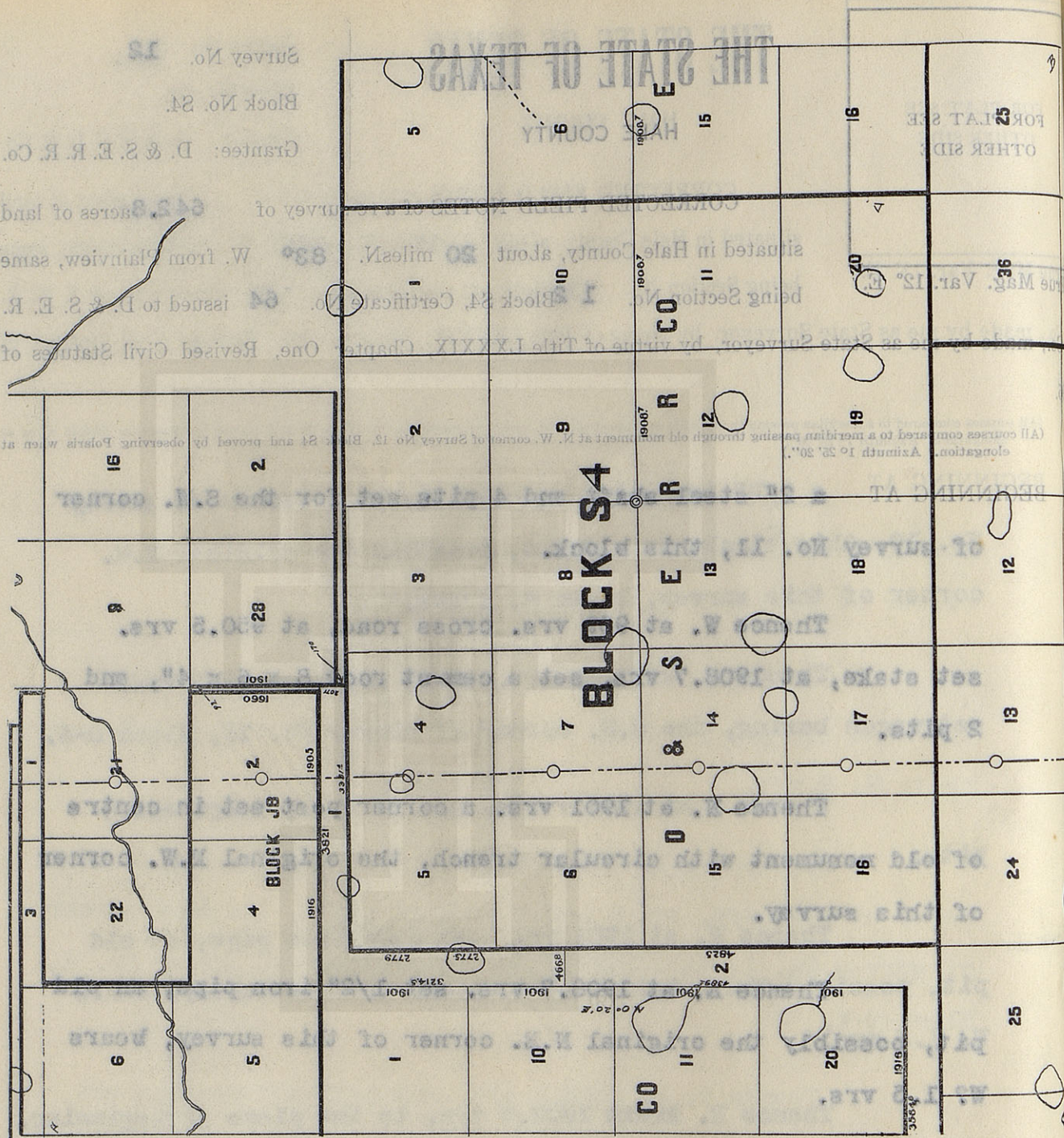
Re-surveyed _____ day of August, 1903.
APPROVED: _____
Re-surveyed _____ day of August, 1903.

W. J. WILLIAMS, Transitman.

I, W. D. TWICHELL, State Surveyor, do hereby certify that the foregoing is a true and correct copy of the original field notes, and that the limits, boundaries and corners with the natural and artificial, are truly and correctly described in the foregoing plat and field notes.

It was made by me in the field, in accordance with law, and that the limits, boundaries and corners with the natural and artificial, are truly and correctly described in the foregoing plat and field notes.

Beed
W.



COMMISSIONER GENERAL LAND OFFICE

CLAYTON WILLIAMS, Chain Carrier.

Tom McGee, Chain Carrier.

Bearing record true course.

W. J. WILLIAMS, Transitman.

I, W. D. TWICHELL, State Surveyor, do hereby certify that the foregoing is a true and correct copy of the original field notes, and that the limits, boundaries and corners with the natural and artificial, are truly and correctly described in the foregoing plat and field notes.

It was made by me in the field, in accordance with law, and that the limits, boundaries and corners with the natural and artificial, are truly and correctly described in the foregoing plat and field notes.

Re-surveyed _____ day of August, 1903.

APPROVED: _____

Re-surveyed _____ day of August, 1903.

THE STATE OF TEXAS

HALE COUNTY

Survey No. 13

Block No. S4.

Grantee: D. & S. E. R. R. Co.

FOR PLAT SEE
OTHER SIDE

CORRECTED FIELD NOTES of a re-survey of 640 acres of land

situated in Hale County, about 21 miles N. 84° W. from Plainview, same

being Section No. 13 Block S4, Certificate No. 65 issued to D. & S. E. R.

R. Co., made by me as State Surveyor, by virtue of Title LXXXIX, Chapter One, Revised Civil Statutes of 1895.

(All courses compared to a meridian passing through old monument at N. W. corner of Survey No. 12, Block S4 and proved by observing Polaris when at elongation. Azimuth 1° 25' 20".)

BEGINNING AT a cement rock 8 x 6 x 4" and 2 pits set for the S.W. corner of survey No. 12, this block.

Thence W. at 830 vrs. cross road, at 1901 vrs. set a stone 12 x 10 x 6" on S.W. side of lake.

Thence N. at 1901 vrs. set a stone and 1/2" iron pipe in lake, the S.W. corner of survey No. 8.

Thence E. at 1901 vrs. corner post set 1 centre of old monument and circular trench, the original S.E. corner of survey No. 8.

Thence S. 1901 vrs. to the place of beginning.

Bearings record true course.

W. J. WILLIAMS, Transitman.

CLAYTON WILLIAMS, } Chain Carriers.
TOM MCGEE.

I, W. D. TWICHELL, State Surveyor, do hereby certify that the foregoing re-survey is correct and that it was made by me in the field, in accordance with law, and that the limits, boundaries and corners with the marks, natural and artificial, are truly and correctly described in the foregoing plat and field notes.

Re-surveyed 14 day of August, 1909.

APPROVED:

State Surveyor.

Commissioner General Land Office.

File No.

County.

Corrected Field Notes

Survey No.

Filed

190

Commissioner.

File Clerk.

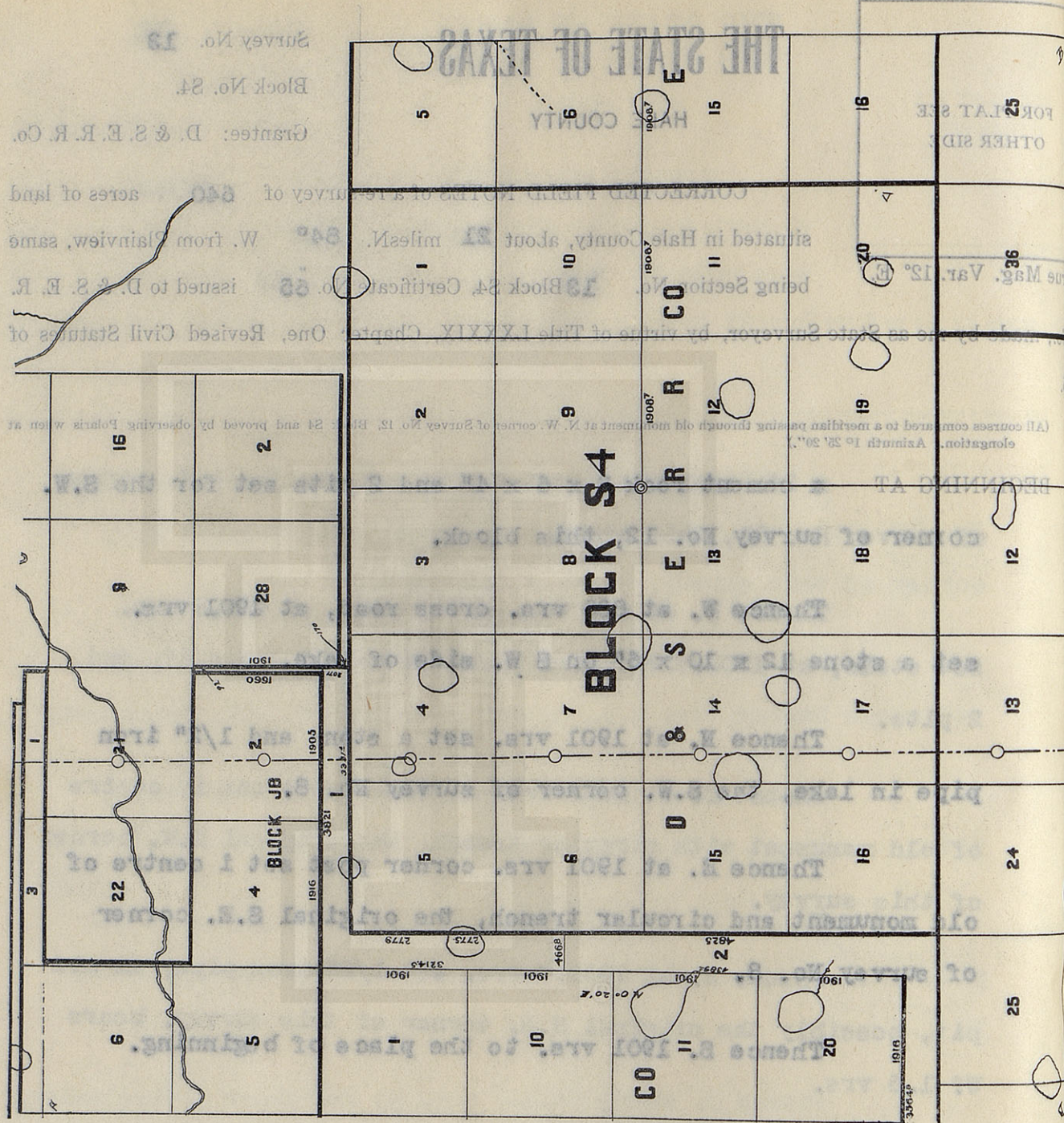
Surveyed with Buff Solar Transit No. 6741

CLAYTON W. WILLIAMS, Chain Carrier.
TOM MCGEE, State Surveyor.
The foregoing is a true and correct copy of the original field notes as the same were taken by the said chain carrier and state surveyor, and the limits, boundaries and corners with the same are as shown on the foregoing plat and field notes.

W. J. WILLIAMS, Transcriber.
Bearing record true course.

I, W. D. TWICHELL, State Surveyor, do hereby certify that the foregoing is a true and correct copy of the original field notes as the same were taken by the said chain carrier and state surveyor, and the limits, boundaries and corners with the same are as shown on the foregoing plat and field notes.

Commissioner General Land Office.



THE STATE OF TEXAS

HALE AND LAMB COUNTIES

505² ACRES IN HALE COUNTY

134⁸ ACRES IN LAMB COUNTY

Survey No. 14

Block No. S4.

Grantee: D. & S. E. R. R. Co.

FOR PLAT SEE
OTHER SIDE

CORRECTED FIELD NOTES of a re-survey of 640 acres of land

situated in Hale and Lamb Counties, about 22 miles N. 84° W. from Plainview,

same being Section No. 14 Block S4, Certificate No. 65 issued to D. & S. E. R.

R. Co., made by me as State Surveyor, by virtue of Title LXXXIX, Chapter One, Revised Civil Statutes of

1895.

(All courses compared to a meridian passing through old monument at N. W. corner of Survey No. 12, Block S4 and proved by observing Polaris when at elongation. Azimuth 1° 25' 20".)

BEGINNING AT

a stone 12 x 10 x 6" on S.W. side of lake set for the
S.W. corner of survey No. 13, this block.

Thence W. at 520 vrs. cross fence on E. side of
lake, at 1901 vrs. set a stone 20 x 12 x 6".

Thence N. 1901 vrs. to a stone and 1/2" iron pipe
set for the S.W. corner of survey No. 7.

Thence E. at 1901 vrs. set a stone and 1/2" iron
pipe in lake.

Thence E. 1901 vrs. to the place of beginning.

Surveyed with Bull's Head Transit No. 6741

Bearings record true course.

W. J. WILLIAMS, Transitman.

CLAYTON WILLIAMS, } Chain Carriers.
TOM MCGEE.

I, W. D. TWICHELL, State Surveyor, do hereby certify that the foregoing re-survey is correct and that it was made by me in the field, in accordance with law, and that the limits, boundaries and corners with the marks, natural and artificial, are truly and correctly described in the foregoing plat and field notes.

Re-surveyed 14 day of August, 1909.

APPROVED:

State Surveyor.

Commissioner General Land Office.

File No.

County.

Corrected Field Notes

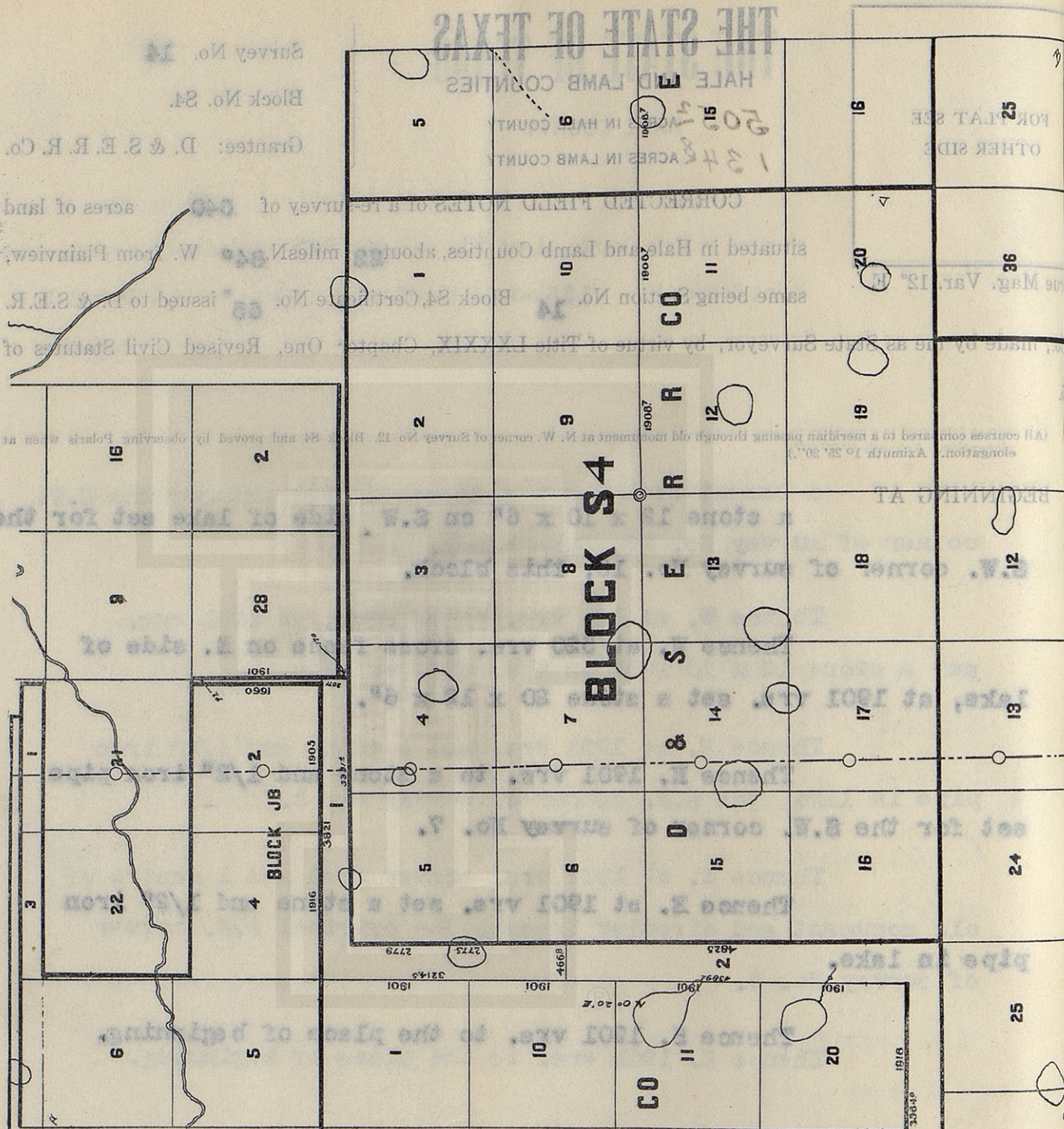
Survey No.

Filed 190

Commissioner.

File Clerk.

Surveyed with Buff Solar Transit No. 6741



W. J. WILLIAMS, Transmittan.

Re-surveyed day of August, 1903.

Commissioner General Land Office.

THE STATE OF TEXAS

LAMB COUNTY

Survey No. 15

Block No. S4.

Grantee: D. & S. E. R. R. Co.

FOR PLAT SEE
OTHER SIDE

CORRECTED FIELD NOTES of a re-survey of 640 acres of land situated in Lamb County, about 4 miles N. 35° E. from Olton, same being Section No. 15 Block S4, Certificate No. 66 issued to D. & S. E. R.

True Mag. Var. 12° E.

R. Co., made by me as State Surveyor, by virtue of Title LXXXIX, Chapter One, Revised Civil Statutes of 1895.

(All courses compared to a meridian passing through old monument at N. W. corner of Survey No. 12, Block S4 and proved by observing Polaris when at elongation. Azimuth 1° 25' 20".)

BEGINNING AT

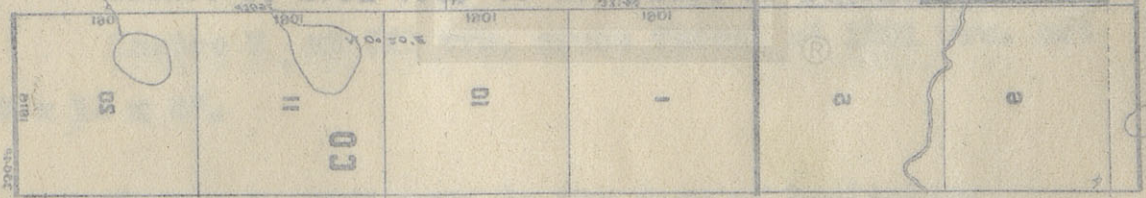
a stone and 1/2" iron pipe set for the N.W. corner of survey No. 14, this block.

Thence e W. at 1901 vrs. set a stone.

Thence S. at 1901 vrs. set a stone 18 x 16 x 12" and 4 pits.

Thence E. at 1901 vrs. set a stone 20 x 12 x 6".

Thence N. 1901 vrs. to the place of beginning.



Surveyed with Bull's Head Transit No. 6741

Bearings record true course.

W. J. WILLIAMS, Transitman.

CLAYTON WILLIAMS, } Chain Carriers.
TOM MCGEE, }

I, W. D. TWICHELL, State Surveyor, do hereby certify that the foregoing re-survey is correct and that it was made by me in the field, in accordance with law, and that the limits, boundaries and corners with the marks, natural and artificial, are truly and correctly described in the foregoing plat and field notes.

Re-surveyed 14 day of August, 1909.

APPROVED:

State Surveyor.

Commissioner General Land Office.

File No.

County.

Corrected Field Notes

Survey No.

Filed 190

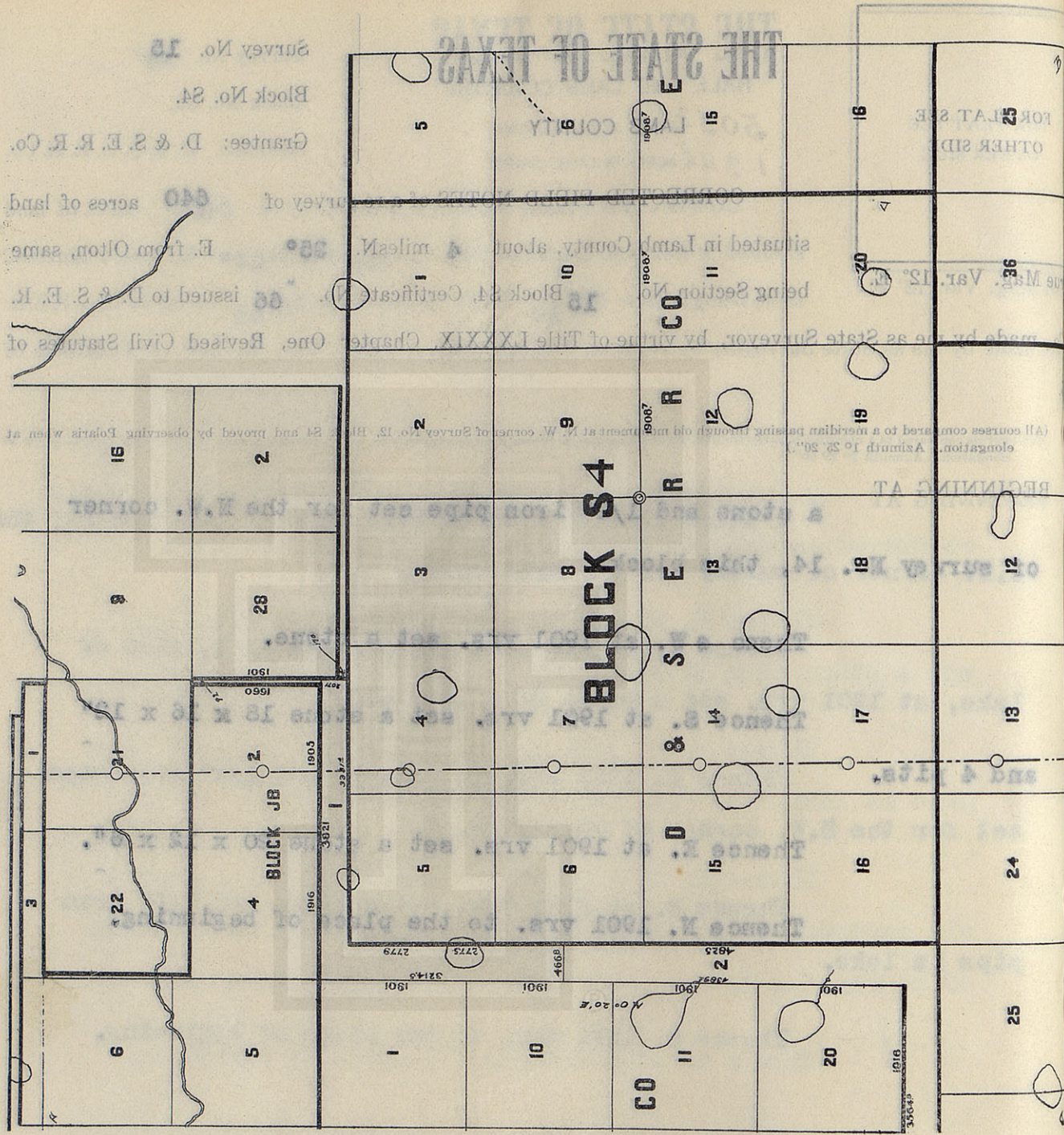
Commissioner.

File Clerk.

Surveyed with Buff Solar Transit No. 6741

CLAYTON W. WILLIAMS, Chain Carrier.
TOM MOORE, State Surveyor, do hereby certify that the foregoing re-survey is correct and that the limits, boundaries and corners with the bearings and distances described in the foregoing plat are true and correct.

Commissioner General Land Office.
Re-surveyed day of August, 1900.
I, W. D. TWICHELL, State Surveyor, do hereby certify that the foregoing re-survey is correct and that the limits, boundaries and corners with the bearings and distances described in the foregoing plat are true and correct.
W. J. WILLIAMS, Transitman.
Bearings record true course.



THE STATE OF TEXAS

LAMB COUNTY

Survey No. 16

Block No. S4.

Grantee: D. & S. E. R. R. Co.

FOR PLAT SEE
OTHER SIDE

CORRECTED FIELD NOTES of a re-survey of 640 acres of land situated in Lamb County, about 3 miles N. 45° E. from Olton, same being Section No. 16 Block S4, Certificate No. 66 issued to D. & S. E. R.

R. Co., made by me as State Surveyor, by virtue of Title LXXXIX, Chapter One, Revised Civil Statutes of 1895.

(All courses compared to a meridian passing through old monument at N. W. corner of Survey No. 12, Block S4 and proved by observing Polaris when at elongation. Azimuth $1^{\circ} 25' 20''$.)

BEGINNING AT a stone 18 x 16 x 12" and 4 pits set for the S.W. corner of survey No. 15, this block.

Thence S. at 1901 vrs. set a cement rock 18 x 16 x 14", the N.E. corner of survey No. 25, Block O-2.

Thence E. at 1901 vrs. set a large stone.

Thence N. at 1901 vrs. set a stone 20 x 12 x 6", the S.W. corner of survey No. 14.

Thence W. 1901 vrs. to the place of beginning.

Bearings record true course.

W. J. WILLIAMS, Transitman.

CLAYTON WILLIAMS, } Chain Carriers.
TOM MCGEE.

I, W. D. TWICHELL, State Surveyor, do hereby certify that the foregoing re-survey is correct and that it was made by me in the field, in accordance with law, and that the limits, boundaries and corners with the marks, natural and artificial, are truly and correctly described in the foregoing plat and field notes.

Re-surveyed 14 day of August, 1909.

APPROVED:

State Surveyor.

Commissioner General Land Office.

File No. _____

County. _____

Corrected Field Notes

Survey No. _____

Filed _____

Commissioner.

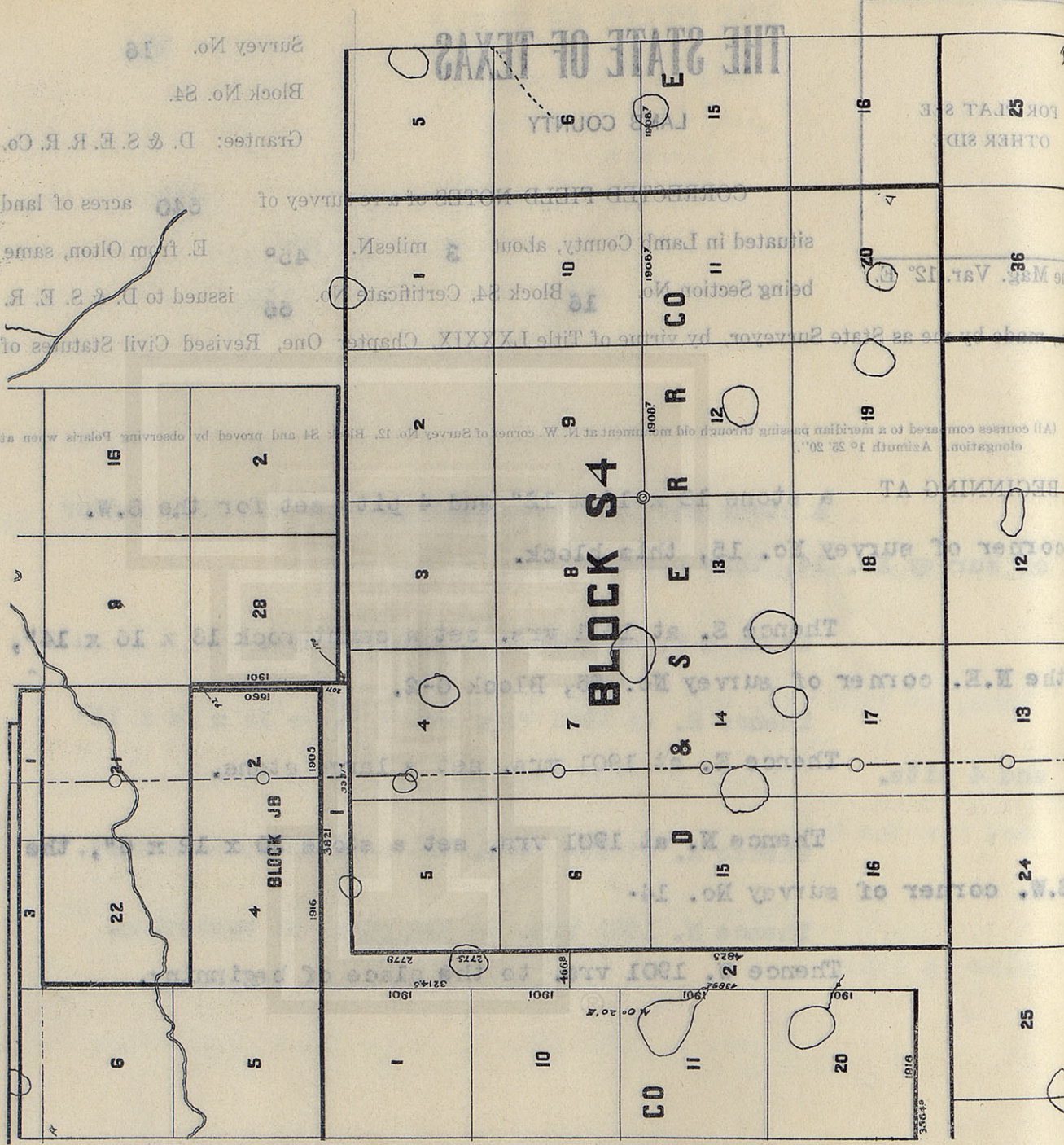
File Clerk.

Surveyed with Buft Solar Transit No. 6741

CLAYTON W. WILLIAMS, Chain Carrier.
Tom McGee, Chain Carrier.
I, W. D. TWICHELL, State Surveyor, do hereby certify that the foregoing is a true and correct copy of the original field notes, and that the limits, boundaries and corners with the natural and artificial, are truly and correctly described in the foregoing plat and field notes.

Re-surveyed 14 day of August, 1903.
I, W. D. TWICHELL, State Surveyor, do hereby certify that the foregoing is a true and correct copy of the original field notes, and that the limits, boundaries and corners with the natural and artificial, are truly and correctly described in the foregoing plat and field notes.

W. J. WILLIAMS, Transitman.
Bearings record true course.



THE STATE OF TEXAS

HALE AND LAMB COUNTIES

500⁶ ACRES IN HALE COUNTY

139⁴ ACRES IN LAMB COUNTY

Survey No. 17

Block No. S4.

Grantee: D. & S. E. R. R. Co.

FOR PLAT SEE
OTHER SIDE

CORRECTED FIELD NOTES of a re-survey of 640 acres of land

situated in Hale and Lamb Counties, about 22 miles N. 86° W. from Plainview,

same being Section No. 17 Block S4, Certificate No. 67 issued to D. & S. E. R.

R. Co., made by me as State Surveyor, by virtue of Title LXXXIX, Chapter One, Revised Civil Statutes of

1895.

(All courses compared to a meridian passing through old monument at N. W. corner of Survey No. 12, Block S4 and proved by observing Polaris when at elongation. Azimuth 1° 25' 20".)

BEGINNING AT

a large stone set for the S.E. corner of survey No. 16, this block, and the N.E. corner of survey No. 24, Block 0-2.

Thence E. at cross county line, at 515 vrs. cross road, at 1901 vrs. set a cement rock, the N.E. corner of survey No. 13, Block 0-2.

Thence N. at 1901 vrs. set a stone 12 x 10 x 6" on S.W. side of lake, the S.E. corner of survey No. 14.

Thence W. at 520 vrs. cross fence, at 1901 vrs. set a stone 20 x 12 x 6".

Thence S. 1901 vrs. to the place of beginning.

Bearings record true course.

W. J. WILLIAMS, Transitman.

CLAYTON WILLIAMS, } Chain Carriers.
TOM MCGEE.

I, W. D. TWICHELL, State Surveyor, do hereby certify that the foregoing re-survey is correct and that it was made by me in the field, in accordance with law, and that the limits, boundaries and corners with the marks, natural and artificial, are truly and correctly described in the foregoing plat and field notes.

Re-surveyed 14 day of August, 1909.

APPROVED:

State Surveyor.

Commissioner General Land Office.

File No. _____

County.

Corrected Field Notes

Survey No. _____

Filed _____ 190_____

Commissioner.

File Clerk.

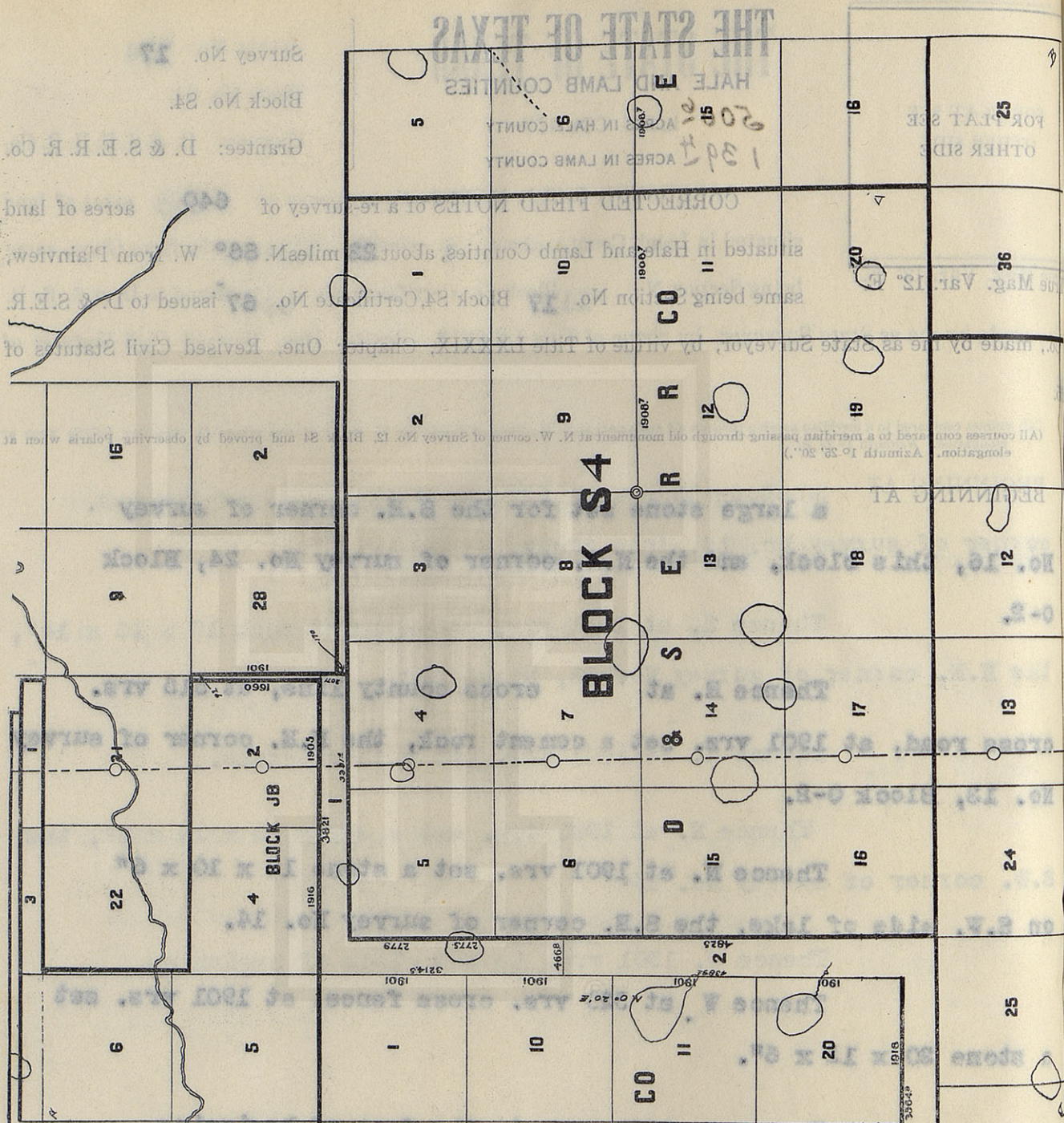
Commissioner General Land Office.

Re-surveyed day of August, 1909.

W. J. Williams, Transitionman.
Bearings record true course.

Re
APPROV

I,
it was m
marks, r

Be
W

THE STATE OF TEXAS

HALE COUNTY

Survey No. 18.

Block No. S4.

Grantee: D. & S. E. R. R. Co.

FOR PLAT SEE
OTHER SIDE

CORRECTED FIELD NOTES of a re-survey of 640 acres of land situated in Hale County, about 21 miles N. 86° W. from Plainview, same being Section No. 18 Block S4, Certificate No. 67 issued to D. & S. E. R.

True Mag. Var. 12° E.

R. Co., made by me as State Surveyor, by virtue of Title LXXXIX, Chapter One, Revised Civil Statutes of 1895.

(All courses compared to a meridian passing through old monument at N. W. corner of Survey No. 12, Block S4 and proved by observing Polaris when at elongation. Azimuth 1° 25' 20".)

BEGINNING AT a cement rock set for the S.E. corner of survey No. 17, this block.

Thence E. at 415 vrs. cross road, at 1901 vrs. set a cement rock, 14 x 8 x 6" and 2 pits.

Thence N. at 1901 vrs. set a cement rock 8 x 6 x 4" and 2 pits.

Thence W. at 830 vrs. cross road, at 1901 vrs. set a cement rock 12 x 10 x 6" on S.W. side of lake.

Thence S 1901 vrs. to the place of beginning.

Bearings record true course.

W. J. WILLIAMS, Transitman.

CLAYTON WILLIAMS, } Chain Carriers.
TOM MCGEE.

I, W. D. TWICHELL, State Surveyor, do hereby certify that the foregoing re-survey is correct and that it was made by me in the field, in accordance with law, and that the limits, boundaries and corners with the marks, natural and artificial, are truly and correctly described in the foregoing plat and field notes.

Re-surveyed 14 day of August, 1909.

APPROVED:

State Surveyor.

Commissioner General Land Office.

File No.

County.

Corrected Field Notes

Survey No.

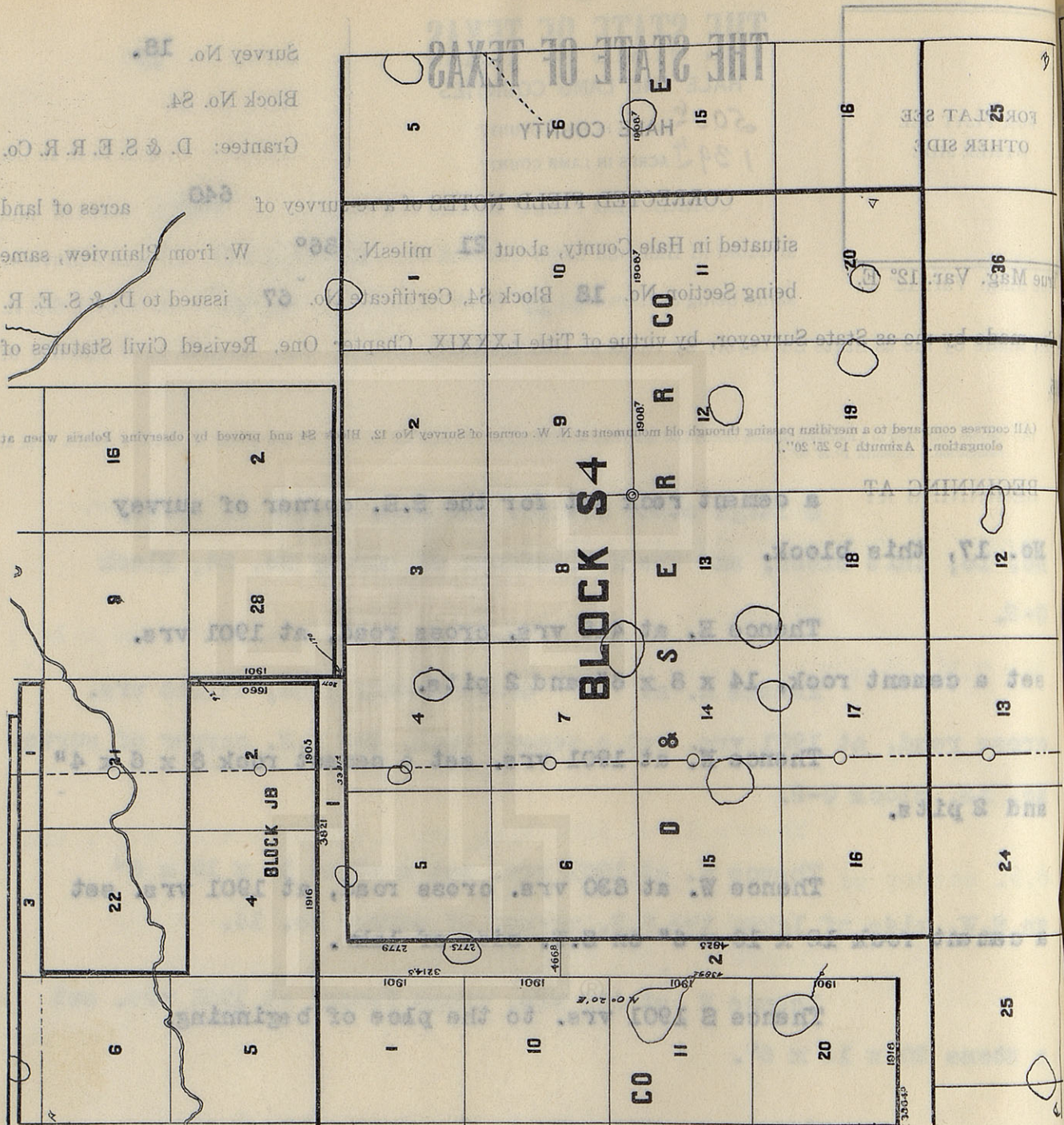
Filed

190

Commissioner.

File Clerk.

Surveyed with Buff Solar Transit No. 6741



Commissioner General Land Office.

Resurveyed 14 day of August, 1909.

I, W. D. TWICHELL, State Surveyor, do hereby certify that the foregoing resurvey is correct and that the same was made by me in the field, in accordance with law, and that the limits, boundaries and corners with the natural and artificial, are truly and correctly described in the foregoing plat and field notes.

W. J. WILLIAMS, Transcriber.
Bearings record true course.

THE STATE OF TEXAS

HALE COUNTY

Survey No. 19.

Block No. S4.

Grantee: D. & S. E. R. R. Co.

FOR PLAT SEE
OTHER SIDE

CORRECTED FIELD NOTES of a re-survey of 642.8 acres of land situated in Hale County, about 20 miles N. 86° W. from Plainview, same being Section No. 19 Block S4, Certificate No. 68 issued to D. & S. E. R.

True Mag. Var. 12° E.

R. Co., made by me as State Surveyor, by virtue of Title LXXXIX, Chapter One, Revised Civil Statutes of 1895.

(All courses compared to a meridian passing through old monument at N. W. corner of Survey No. 12, Block S4 and proved by observing Polaris when at elongation. Azimuth 1° 25' 20".)

BEGINNING AT a cement rock 14 x 8 x 6" and 2 pits set for S.E. corner of survey No. 18, this block.

Thence E. 1131 vrs., 1598 vrs. and 1740 vrs. cross roads, at 1908.7 vrs. set a cement rock 14 x 8 x 8".

Thence N. at 1901 vrs. set 2" steel shaft and 2 pits, the S.E. corner of survey No. 12.

Thence W. at 939 vrs. cross road, at 1903.7 vrs. set a cement rock 8 x 6 x 4" and 2 pits.

Thence S. 1901 vrs. to the place of beginning.

Surveyed with Bull's Head Transit No. 6741

Bearings record true course.

W. J. WILLIAMS, Transitman.

CLAYTON WILLIAMS, } Chain Carriers.
TOM MCGEE.

I, W. D. TWICHELL, State Surveyor, do hereby certify that the foregoing re-survey is correct and that it was made by me in the field, in accordance with law, and that the limits, boundaries and corners with the marks, natural and artificial, are truly and correctly described in the foregoing plat and field notes.

Re-surveyed 14 day of August, 1909.

APPROVED:

State Surveyor.

Commissioner General Land Office.

File No.

County.

Corrected Field Notes

Survey No.

Filed

Commissioner.

File Clerk.

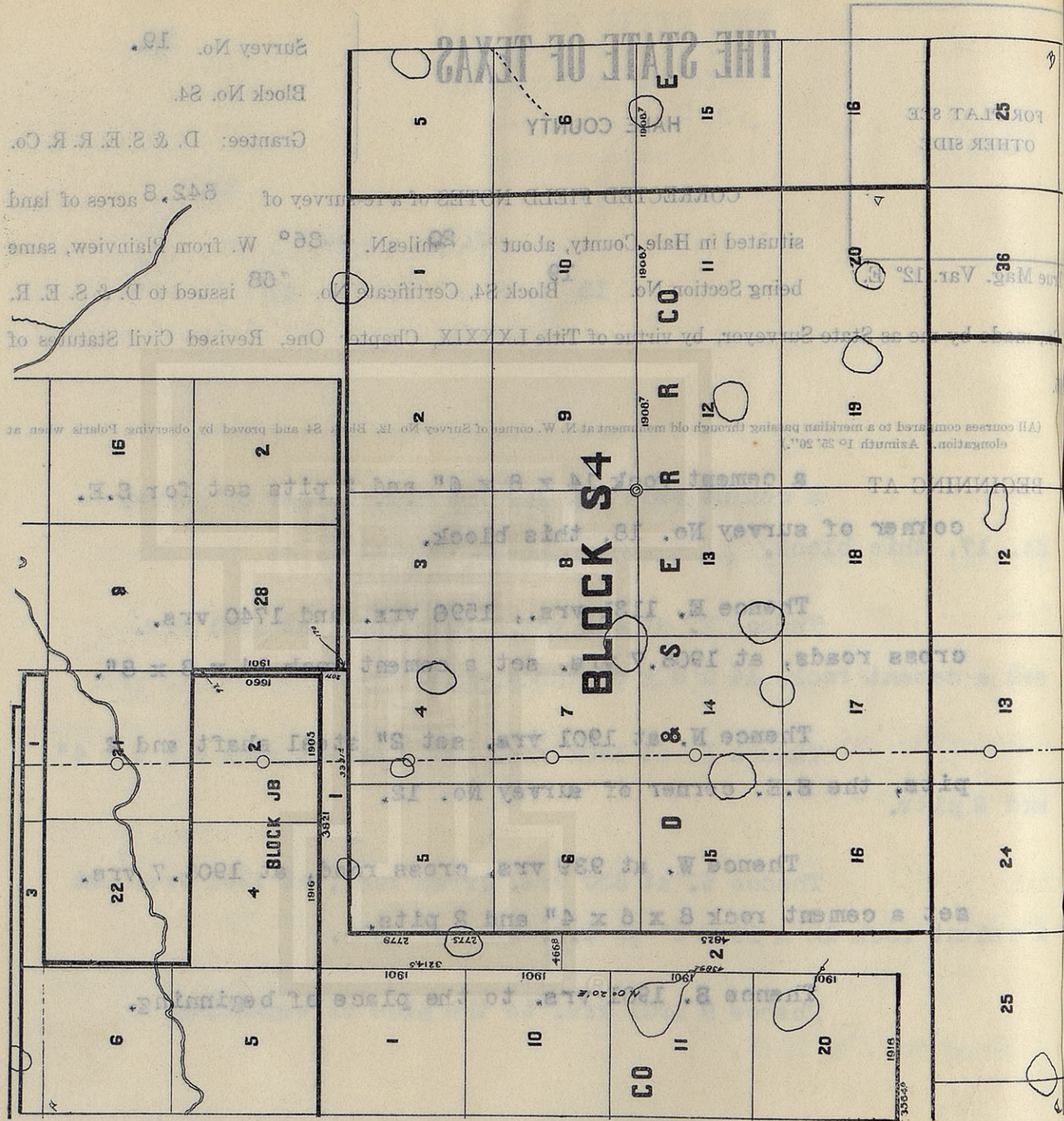
Surveyed with Buff Solar Transit No. 6741

CLAYTON WILLIAMS, Chain Carrier.
Tom McGee

Commissioner General Land Office.

Re-surveyed 14 day of August, 1909.
I, W. D. TWICHELL, State Surveyor, do hereby certify that the foregoing re-survey is correct and that was made by me in the field, in accordance with law, and that the limits, boundaries and corners with the marks, natural and artificial, are truly and correctly described in the foregoing plat and field notes.

W. J. WILLIAMS, Transcriber.
Bearings record true course.



THE STATE OF TEXAS

HALE COUNTY

Survey No. 20.

Block No. S4.

Grantee: D. & S. E. R. R. Co.

FOR PLAT SEE
OTHER SIDE

CORRECTED FIELD NOTES of a re-survey of 642.8 acres of land

situated in Hale County, about 19 miles N. 36° W. from Plainview, same

True Mag. Var. 12° E. being Section No. 20 Block S4, Certificate No. 63 issued to D. & S. E. R.

R. Co., made by me as State Surveyor, by virtue of Title LXXXIX, Chapter One, Revised Civil Statutes of 1895.

(All courses compared to a meridian passing through old monument at N. W. corner of Survey No. 12, Block S4 and proved by observing Polaris when at elongation. Azimuth 1° 25' 20".)

BEGINNING AT

a cement rock 14 x 8 x 8" set for the S.E. corner
of survey No. 19, this block.

Thence E. at 1908.7 vrs. set a wagon spindle, a w
windmill bears S. 52° 54' E. and 3 old pits bear S. 3 vrs.

Thence N. at 1901 vrs. set wagon boxing.

Thence W. at 1908.7 vrs. set a 2" steel shaft
and 4 pits.

Thence S. 1901 vrs. to the place of beginning.

Bearings record true course.

W. J. WILLIAMS, Transitman.

CLAYTON WILLIAMS, } Chain Carriers.
TOM MCGEE.

I, W. D. TWICHELL, State Surveyor, do hereby certify that the foregoing re-survey is correct and that it was made by me in the field, in accordance with law, and that the limits, boundaries and corners with the marks, natural and artificial, are truly and correctly described in the foregoing plat and field notes.

Re-surveyed 14 day of August, 1909.

APPROVED:

State Surveyor.

Commissioner General Land Office.

File No. _____

County.

Corrected Field Notes

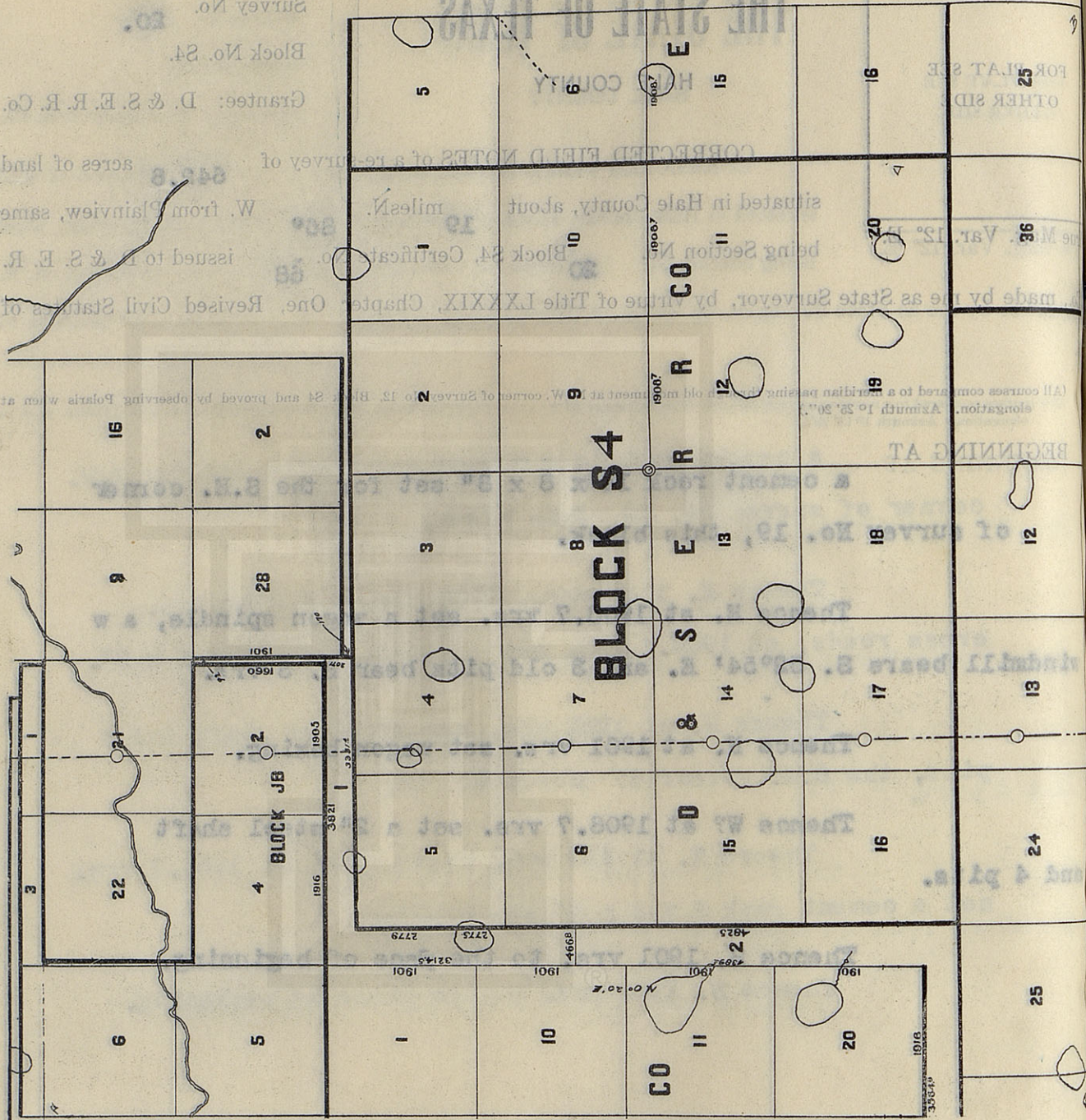
Survey No. _____

Filed _____ 190_____

Commissioner.

File Clerk.

Surveyed with Buff Solar Transit No. 6741



THE STATE OF TEXAS

HALE AND LAMB COUNTIES

81.5 ACRES IN HALE COUNTY

434 ACRES IN LAMB COUNTY

Survey No. 1

Block No. Q2. C. & H.

Grantee: D. & S. E. R. R. Co.
Gunter & Munson

FOR PLAT SEE
OTHER SIDE

CORRECTED FIELD NOTES of a re-survey of 515.5 acres of land sit-

uated in Hale and Lamb Counties, about 23 miles N. 80° W. from Plainview,
same being Section No. 1 Block Q2, Certificate No. issued to D. & S. E. R.

True Mag. Var. 12° E.

made by me as State Surveyor, by virtue of Title LXXXIX, Chapter One, Revised Civil Statutes of

1895.

(All courses compared to a meridian passing through old monument at N. W. corner of Survey No. 12, Block S4 and proved by observing Polaris when at elongation. Azimuth 1° 25' 20".)

BEGINNING AT a stone 6x6x4" marked + set for the N.W. corner of section No. 20 and the S.E. corner of section No. 21, Block S.1.

Thence South 2071 varas to a point in the North line of section No. 4, Block S.4;

Thence West at 1113.6 varas cross county line, at 1480.4 varas pass a cement rock 10x6x4" and 2 pits set for the N.E. corner of section No. 5, Block S.4, at 2381.4 varas set 4 pits, casting, and 2x4" marked S, S 4;

Thence South at 1300 to 1600 varas cross lake, at 1901 varas set stone and 4 pits, at 2779 varas point;

Thence West 466.8 varas to the east line of section No. 10, Block A;

Thence N. 0° 22' E. at 1213.5 varas pass a stone 16x12x3 marked +, set by State Surveyor, W.D. Twichell for the N.E. cor of said survey No. 10, at 2214.5 varas a stone 15x12x3" marked +, set by said State Surveyor, W.D. Twichell for the S.W. corner of Survey No. 4, Block J.B;

Thence S. 39° 38' E. at 1916 varas pass 7 small stones set by W.D. Twichell for the S.E. corner of said survey No. 4, at 2711 varas cross county line at 2821 varas a stone 12x12x6" marked + set by W.D. Twichell for the S.E. corner of section No. 2, Block J.B.;

Thence N. 0° 22' E. 1660 varas to a stone 12x7x5" marked +;

Bearings record true course.

Thence S. 39° 38' E. 9.3 varas to the place of beginning.

CLAYTON WILLIAMS, } Chain Carriers.
TOM MCGEE.

I, W. D. TWICHELL, State Surveyor, do hereby certify that the foregoing re-survey is correct and that it was made by me in the field, in accordance with law, and that the limits, boundaries and corners with the marks, natural and artificial, are truly and correctly described in the foregoing plat and field notes.

Re-surveyed 12th day of August, 1909.

APPROVED:

State Surveyor.

Commissioner General Land Office.

File No. _____

County. _____

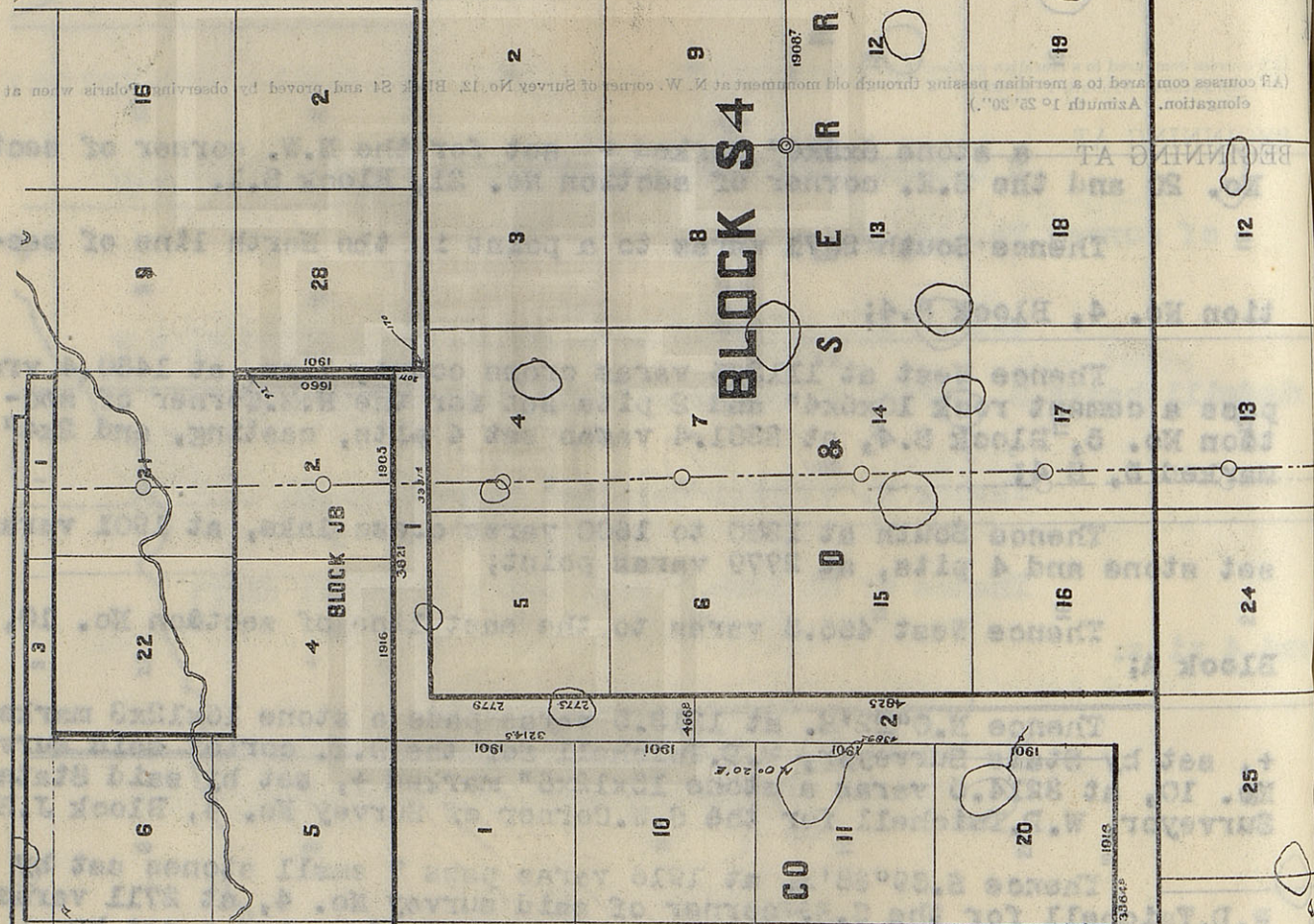
Corrected Field Notes

Survey No. _____

Filed _____ 190_____

Commissioner.

File Clerk.



Surveyed with Buff Solar Transit No. 6741

Commissioner General Land Office.

APPROVED:

it was
marks,

B
V

10

BE

Co., m

THE STATE OF TEXAS

LAMB COUNTY

Survey No. 2

Block No. 02X G. & M.
Gunter & Munson
Grantee: D. & S. E. R. Co.

FOR PLAT SEE
OTHER SIDE

CORRECTED FIELD NOTES of a re-survey of 696.5 acres of land

situated in Lamb County, about 3 miles N. 30° E. from Olton, same

True Mag. Var. 12° E.

being Section No. 2 Block 02, Certificate No. issued to D. & S. E. R.

made by me as State Surveyor, by virtue of Title LXXXIX, Chapter One, Revised Civil Statutes of 1895.

(All courses compared to a meridian passing through old monument at N. W. corner of Survey No. 12, Block S4 and proved by observing Polaris when at elongation. Azimuth 1° 25' 20".)

BEGINNING AT the S.E. corner of section No. 1, this block;

Thence South at 1023 varas set large stone for the N.W. cor. of section No. 15, Block S. 4., at 2924 varas pass a stone 18x16x12" and 4 pits made for the S.W. corner of said section No. 15, at 4325 varas set a cement rock 10x10x14" for the N.E. corner of section No. 25, Block 0.2;

Thence West at 498 varas pass a 1/2" iron pipe in ground, at 1901 varas set 1/2" iron pipe for the N.W. corner of section No. 25, at 3302 varas set a cement rock 13x10x7" for the N.W. corner of section No. 36, Block 0.2., at 4062 varas set iron pipe and 3 pits;

Thence North at 458.6 varas set iron pipe and 3 pits in the south line of section No. 19, Block A;

Thence S. 89° 38' E. at 1643.8 varas pass stone 6x6x5" set by W.D. Twichell, State Surveyor for the S.E. corner of Section No. 20, Block A, at 3564.3 varas a stone 10x10x6" marked + and 4 pits set by said W.D. Twichell for the S.E. corner of said section No. 20;

Thence N. 0° 22' E. at 1901 varas pass stone 10x6x4" marked +, at 3302 varas pass stone 10x10x4" marked +, set by said W.D. Twichell for the N.E. corner of section No. 11, Block A, at 4389.5 varas point;

Thence East 473.4 varas to the place of beginning.

Bearings record true course.

W. J. WILLIAMS, Transitman.

CLAYTON WILLIAMS, } Chain Carriers.
TOM MCGEE. }

I, W. D. TWICHELL, State Surveyor, do hereby certify that the foregoing re-survey is correct and that it was made by me in the field, in accordance with law, and that the limits, boundaries and corners with the marks, natural and artificial, are truly and correctly described in the foregoing plat and field notes.

Re-surveyed 12th day of August, 1909.

APPROVED:

State Surveyor.

Commissioner General Land Office.

File No.

County.

Corrected Field Notes

Survey No.

Filed

Commissioner.

File Clerk.

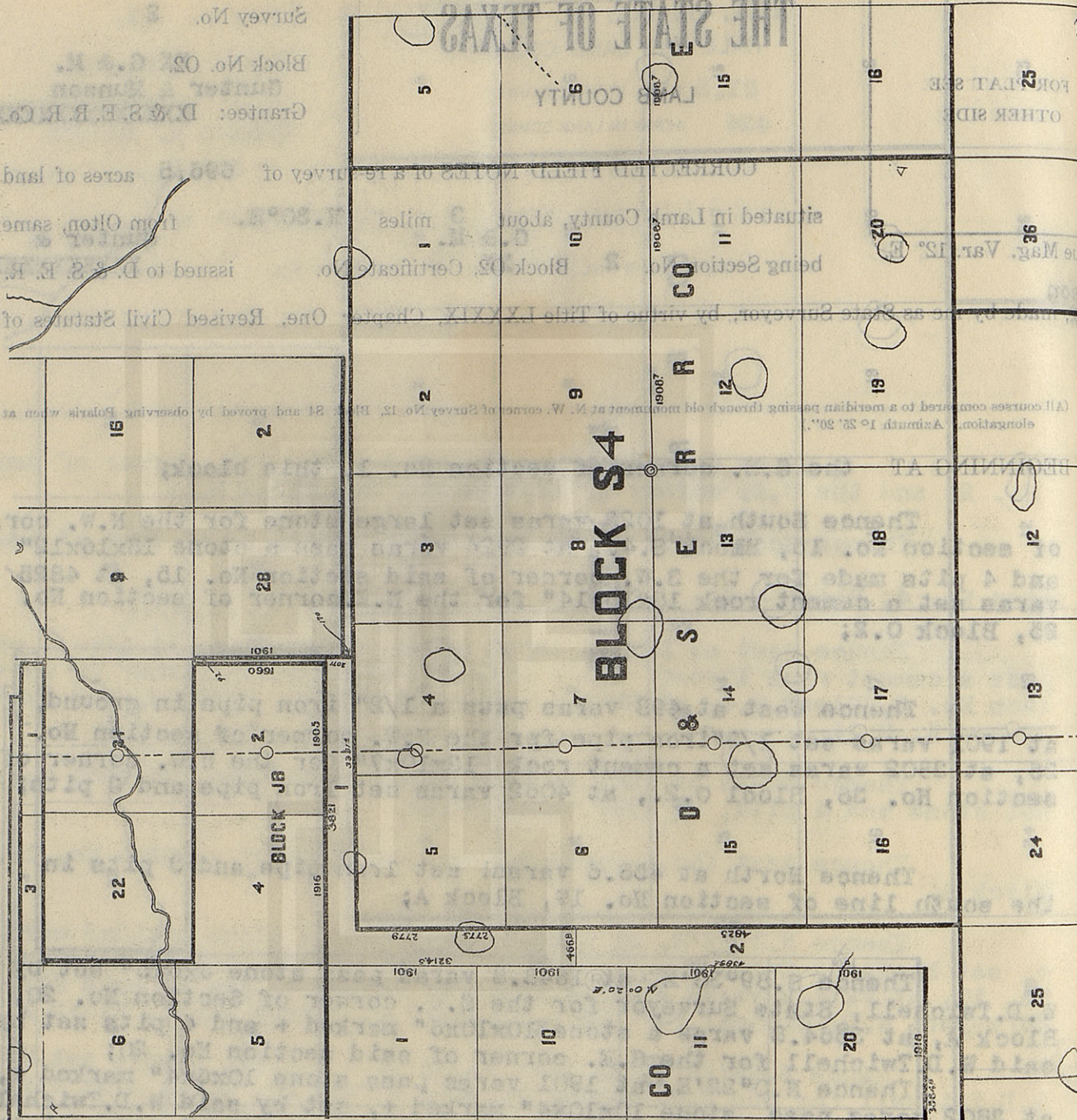
Surveyed with Buff Solar Transit No. 6741

CLAYTON W. WILLIAMS, Chain Carrier.
TOM MOORE, Chain Carrier.
Bears by me in the field, in accordance with law, and at the limits, boundaries and corners with the foregoing plat and field notes.

Commissioner General Land Office.

Re-surveyed 12th day of August, 1900.

W. J. WILLIAMS, Transman.
Bears by me in the field, in accordance with law, and at the limits, boundaries and corners with the foregoing plat and field notes.



One, Revised Civil Statutes of
issued to D. S. E. R. C. Co.
from O'lon, same
acres of land

Grantor: D. S. E. R. C. Co.
Block No. 02
Survey No.

THE STATE OF TEXAS

LAMB COUNTY

FOR PLAT SEE
OTHER SIDE

Survey No. 3

Block No. 02 C. & M.

Grantee: D. & S. E. R. R. Co.
Gunter & Munson

CORRECTED FIELD NOTES of a re-survey of 504 acres of land

situated in Lamb County, about 3 miles N 45° W. from Olton, same

True Mag. Var. 12° E.

being Section No. 3 Block 02, Certificate No. issued to D. & S. E. R.

made by me as State Surveyor, by virtue of Title LXXXIX, Chapter One, Revised Civil Statutes of 1895.

(All courses compared to a meridian passing through old monument at N. W. corner of Survey No. 12, Block S4 and proved by observing Polaris when at elongation. Azimuth 1° 25' 20".)

BEGINNING AT 3 pits and iron pipe set for the S.W. corner of section No. 2, this block;

Thence West at 1641 varas pass a cement rock 8x6x4" set for the N.W. corner of Section No. 25, Block 0.5., at 3542 varas set a cement rock 12x10x8", the N.E. corner of section No. 13, Block 0.5 at 5443 varas pass a cement rock 15x8x4" set for the N.W. corner of said section No. 13, at 5955.2 varas set iron pipe;

Thence North 497 varas to a stone 12x7x5" set by W.D. Twichell State Surveyor for the S.W. corner of section No. 16, Block A.

Thence S. 89° 28' E. with the South line of said Block A, at 1901 varas pass a stone 10x8x6" marked + set by said W.D. Twichell, at 2802 varas pass a stone 14x6x5" marked + set by said W.D. Twichell for the S.W. corner of Section No. 18, Block A., at 5703 varas pass a stone 12x8x4" marked +, set by W.D. Twichell, State Surveyor for the S.E. corner of section No. 18, Block A. in 1908., at 5955.2 varas set iron pipe and 3 pits;

Thence South 453.6 varas to the place of beginning.

Bearings record true course.

W. J. WILLIAMS, Transitman.

CLAYTON WILLIAMS, } Chain Carriers.
TOM MCGEE.

I, W. D. TWICHELL, State Surveyor, do hereby certify that the foregoing re-survey is correct and that it was made by me in the field, in accordance with law, and that the limits, boundaries and corners with the marks, natural and artificial, are truly and correctly described in the foregoing plat and field notes.

Re-surveyed 12th day of August, 1909.

APPROVED:

State Surveyor.

Commissioner General Land Office.

File No. _____

ners with the
street and that
Chain Carriers.

County.

Corrected Field Notes

Survey No.

190

Commissioner.

File Clerk.

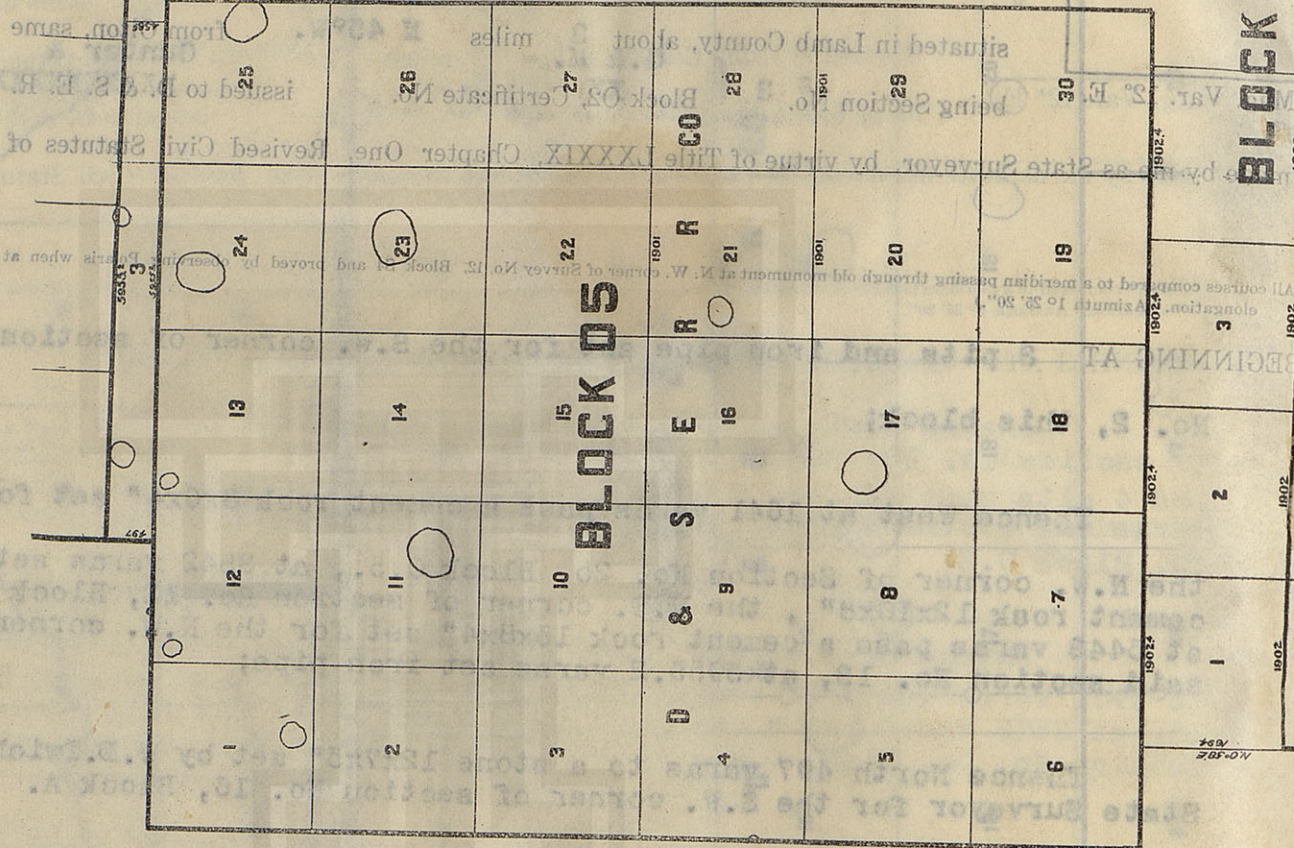
Commissioner General Land Office.

Re-surveyed 1901 day of August, 1901.

W. J. WILLIAMS, Transition.

Beatings record the course.

Surveyed with Buff Solar Transit No. 6741



OR PLAT SE
OTHER SIDE

BLACK

3
BEGINNING

2

1

NO. 402

W. J. W.

I. W. D.

Reserve

BOARD:





