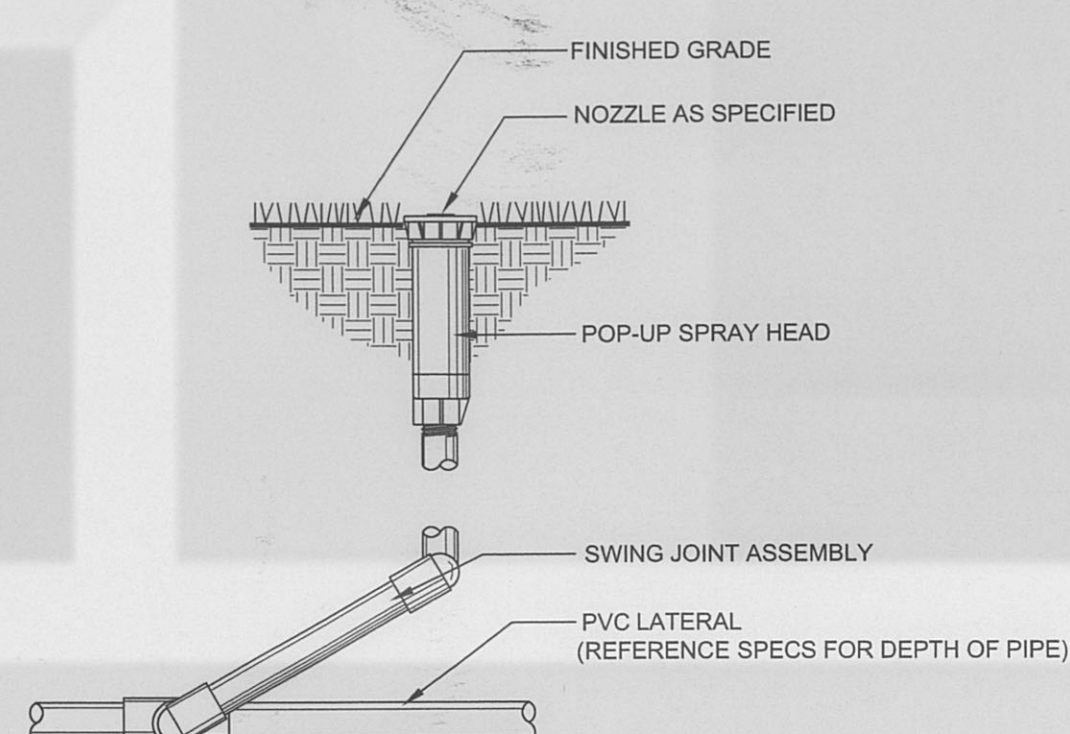
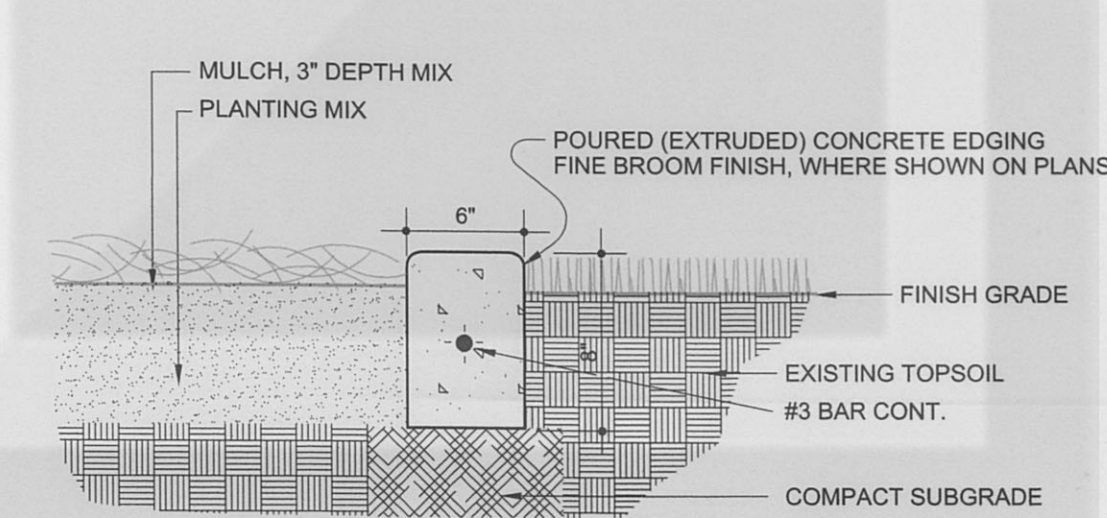


1 12" POP\_UP SHRUB SPRAY HEAD NOT TO SCALE

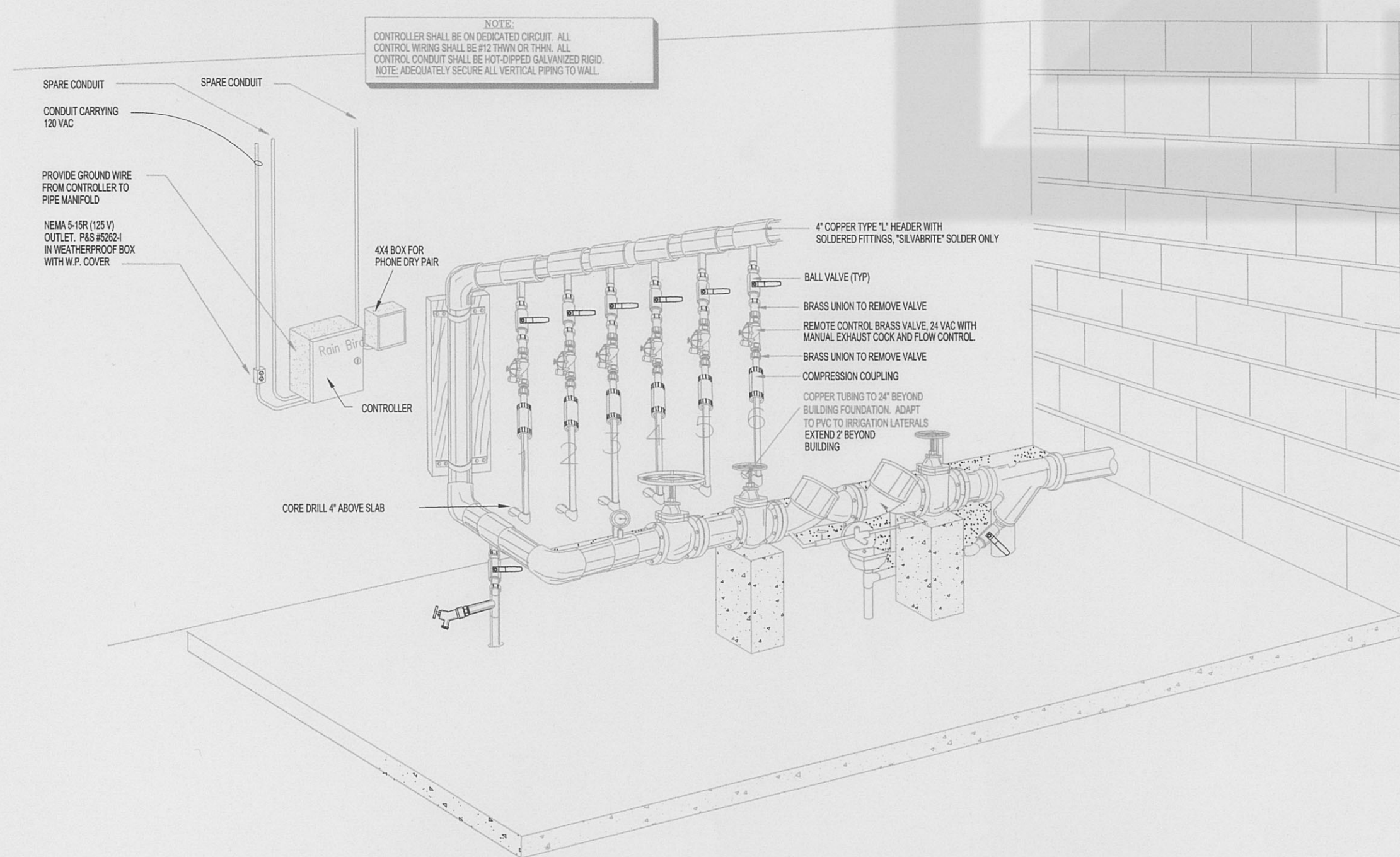


2 4" HIGH POP-UP SPRAY SPRINKLER NOT TO SCALE

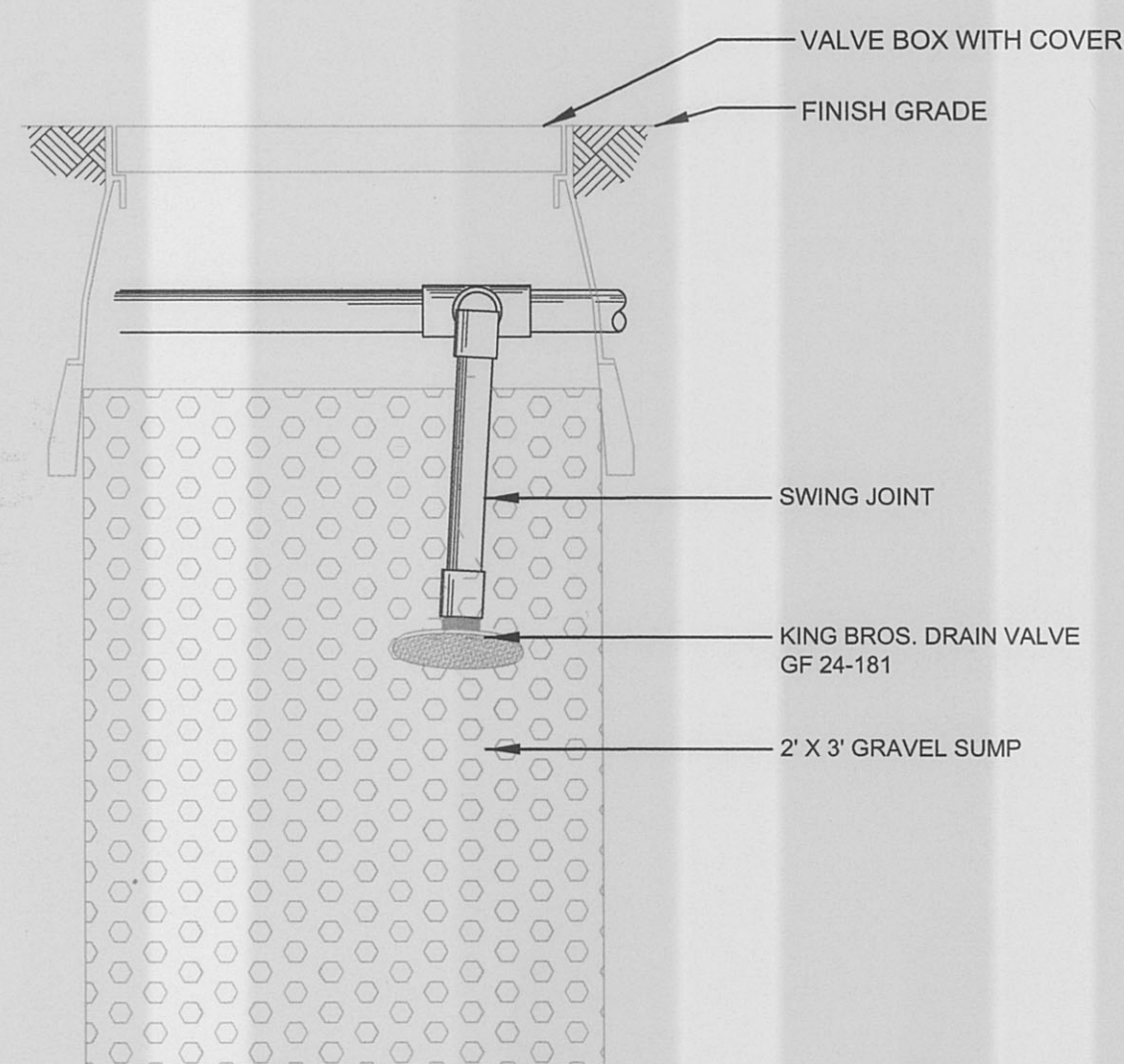


NOTES:  
1. SMOOTH FACE AND SIDES FREE OF ABRUPT UNDULATIONS OR CHANGES.  
2. EXPANSION JOINT EVERY 20'-0" O.C. AND SCORED JOINT EVERY 5' O.C.  
3. COORDINATE INSTALLATION OF CONCRETE EDGING WITH LANDSCAPE AND IRRIGATION INSTALLATION.

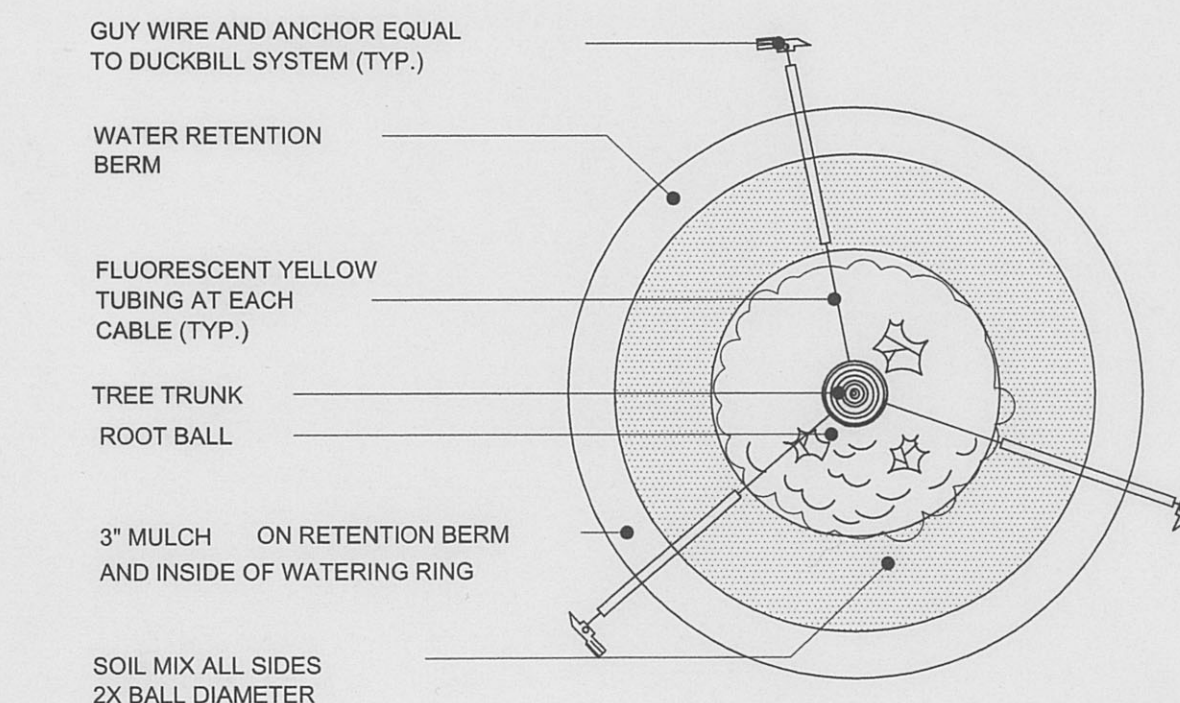
3 POURED (EXTRUDED) CONCRETE EDGING REINFORCED WITH FIBERGLASS NOT TO SCALE



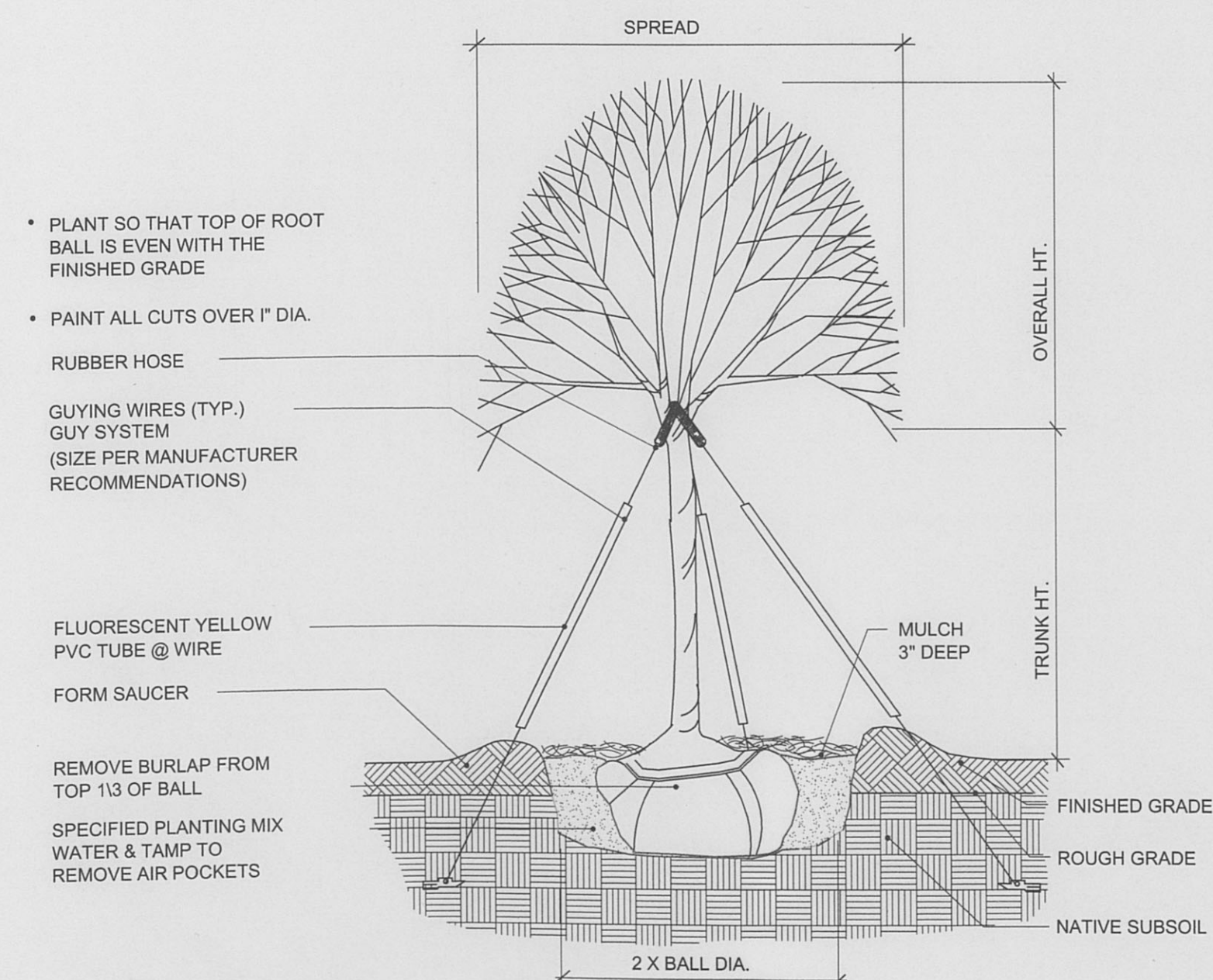
4 PUMP ROOM ISOMETRIC NOT TO SCALE



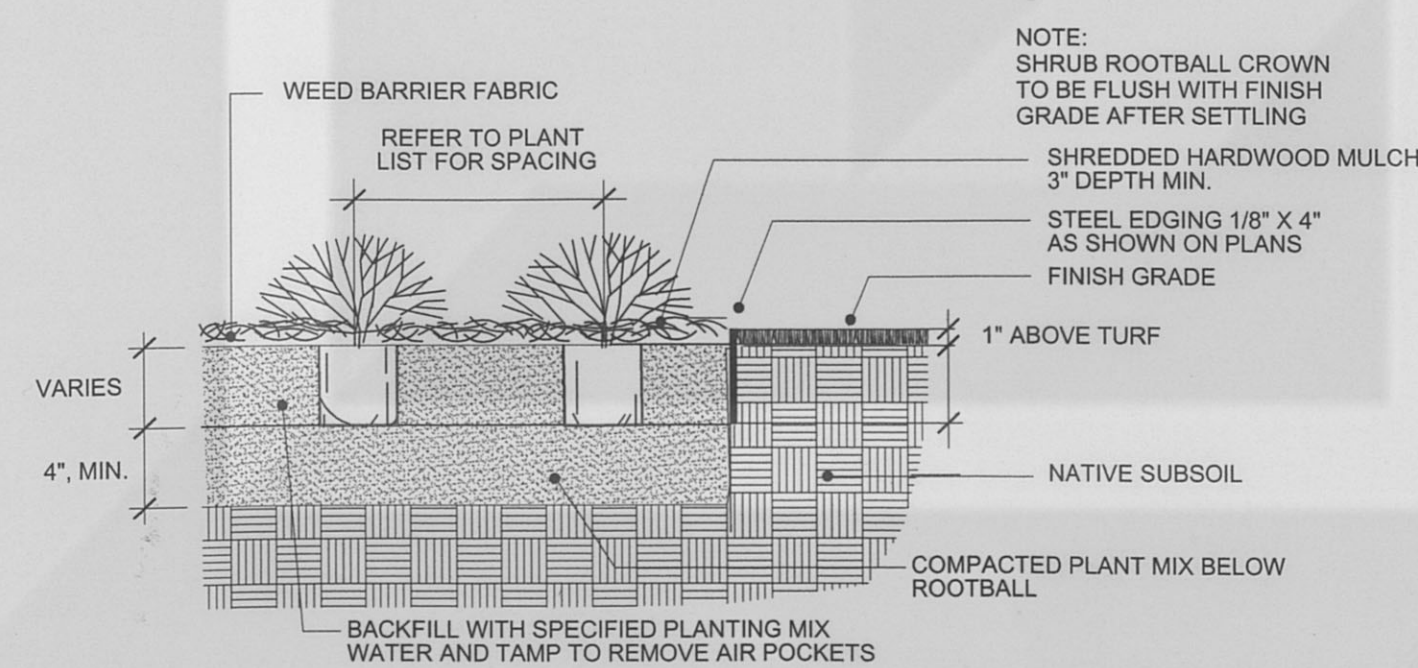
5 DRAIN VALVE DETAIL NOT TO SCALE



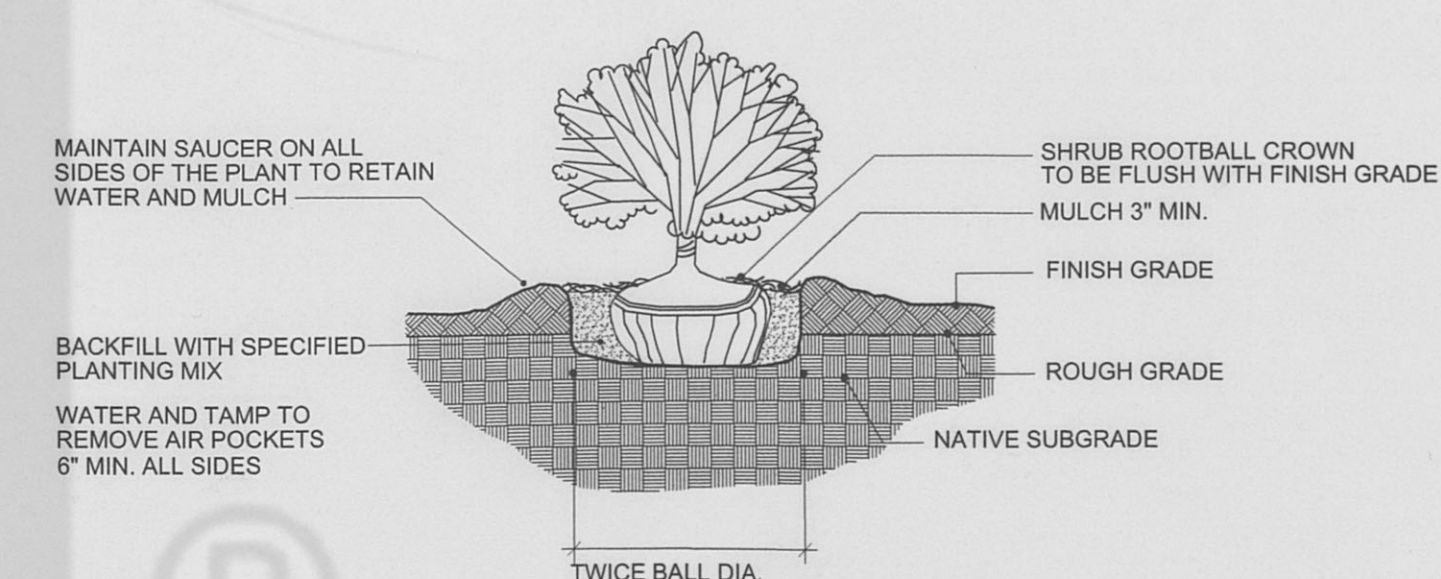
6 STAKING DETAIL NOT TO SCALE



7 TREE PLANTING 3" CAL. AND LARGER NOT TO SCALE



8 SHRUB & GROUND COVER PLANTING NOT TO SCALE



9 SHRUB PIT PLANTING NOT TO SCALE

J. Robert Anderson, ASLA  
Landscape Architect  
1715 S. Capital of Texas Highway  
Suite 105  
Austin, Texas 78746  
phone 512.329.8882  
fax 512.329.8883  
e-mail: jrander@aol.com



The University of Texas at Austin  
Frank Denius Field

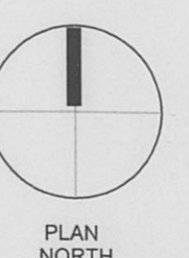
Owner: University of Texas  
Mans Athletic Department  
Address: Red River and MLK Blvd.  
Austin, Texas 78701  
phone: 512.471.5317  
Fax: 512.471.4833

AREA MAP

DATE ISSUED: \_\_\_\_\_

REVISIONS:


DRAWN BY: TAB/TWN  
REVIEWED BY: JRA



SCALE AS INDICATED  
PROJECT NUMBER:  
PLANTING/IRRIGATION DETAILS  
LD-1