



REVISED
*
SADDLES

Catalogue



no 1

7/9/54 Bid - Hughes Ptg Co

5 ft Saddle Catalog

60 # Enamel Inside

70 # Enamel cover

1 Color

40 pages - 1002.00

Add - Dustone cover - 50.00

Extra pages in 4s 22.50 ea

10 # - 1617.20

Dustone cover 70.00

Extra pages in 4s 36.30 ea

10,000 Halster
Cats - \$1164

Promotion
Follow Ups

1. Free - Fender Stamped
with Personal Name or
Brand

2. Bridle

3. Spurs

4. Blanket

X	(8) Bob Crosby	TR	P11 cat	225.00
X	(9) Quarter Horse Rope			225.00 (New Price)
X	(6) Cutting Horse	(New Cut)		235.00
X	(10) Bowman Rope	(new)		225.00
X	(17) Low Down Rope			235.00
X	(14) All - Round Ranch -			197.50 217.50
X	(15) El Ranchero			197.50 217.50
X	(17) Myer Light Rope			190.00 210.00
X	(11) Mexican Rope			195.00 223 ⁵⁰
X	(12) Myer Special Rope			190.00 223 ⁵⁰
X	(13) New Texas Rope			195.00 223 ⁵⁰
	(18) Western Duke			175.00 195.00
X	(19) Bulldogger			165.00 185.00
	(16) Little Wonder			197.50 212.50

21.25

1636250

$$\begin{array}{r} 212 \\ 163 \\ \hline 49 \end{array}$$

S. D. MYRES SADDLE CO.

EL PASO, TEXAS

The S. D. Myres Saddle Company

El Paso, Texas

COWBOY HEADQUARTERS

for

OVER HALF A CENTURY

FAMOUS SADDLES

QUALITY WESTERN CLOTHING

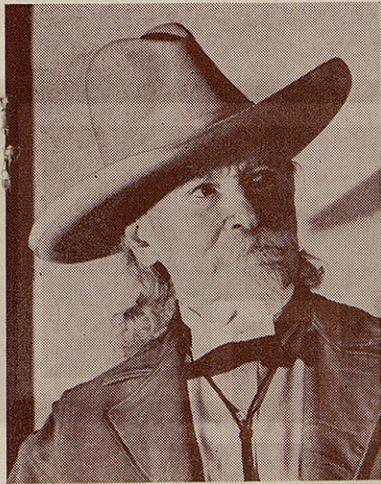
ALL RIDING EQUIPMENT

A Real Western Place

36
pages
plus
inside
Cover

Greetings

My Friends:



1871 / 1953

Western spirit is the same. We have seen saddles and riding equipment change from the old styles used in the days of the Civil War; we have seen the side-saddle pass out and the astride saddle take its place; and many other great changes in saddles. In all these changes we have had a part and have made a contribution.

The saddles shown in this catalogue are the IDEAS of the riders made into saddles by the best trained Western saddle-makers.

Now friends, remember it will always be a pleasure to serve you.

Sincerely yours,

Sam D. Myres

WE WANT TO MAKE NEW FRIENDS — USE OUR SADDLES

To be
 inside cover
 Condense
 Inside -

SADDLES

Saddle making is an art. It combines both the mechanical and artistical, as well as years of training and this skill when applied to the IDEAS OF THE REAL RIDER, makes a real saddle—a saddle distinguished for its strength, wearing value and the pleasure it gives the rider and the comfort it gives the horse. All of these elements are combined in the saddles which we make—below, we list a few of the practical elements that are worth considering.

TREES

The important thing of every saddle is the tree—this is basal. Our trees are made by the best tree makers in the nation; men who have spent their lives making Western trees, and whose product we have used for more than fifty years.

CARVING

Carving is an art. It comes to us from THE OLD MOORS, who left a tracing of their handicraft in Spain; from there it came to Mexico and then into the States. When used by a skilled artist on the right kind of carving leather, it increases the wearing value of the same. Nothing adds more to a finished product than fine carving. Truly it has been said "A thing of beauty is a joy forever." Our carvers are masters in this art—see their fine expressions in the following pages.

MYRES SPECIAL INLAID QUILTED SEAT

Forty years experience in making cushion seated saddles has made us supreme in this art. When sponge rubber was invented for other purposes, we saw the opportunity to give our customers this additional comfort in their saddle seats. There is no equal to a MYRES INLAID RUBBER SEAT, and the satisfaction they have given has been most gratifying.

The Myres inlaid seats are made of select seating leather—artistically quilted on cotton batting then buckskin laced on regular seat. The SPONGE RUBBER is placed between the saddle seat and the inlaid seat, making a nice, soft and durable seat. WE CAN PUT CUSHION SEAT ON YOUR USED SADDLE. WRITE FOR PRICE.

(A1)
S. D. MYRES SADDLE CO.

EL PASO, TEXAS

ure
Cut 7x5
The Queen of the West



No. 555

This distinctive and attractive saddle is an artistic production—a creation of beauty. The carving is done in the most masterly style—the animals are so life-like that they appear real. The workmanship is that of a master artisan.

The Sterling Silver is all hand made and engraved. Please note the Silver Cheyenne roll cantle—Gold monogram on horn, on fork, and stirrups. Made on Special tree with Special Mexican horn.

To see this saddle is to love it—all admire it—it pleases the eyes and gladdens the heart. Weight 35 lbs.

We specialize in silver mounted saddles—Write us your requirements—No two alike—All custom made.



No. 500-X

The distinctive beauty of this saddle should be seen to be appreciated; it is made on that wonderful tree, Myres Low Bronco with Komfort Kante. The special shape of the fork gives plenty of leg room, the cantle is wide and has small ditch, 14" fork, from 13½" to 14½" seat, 3" cantle.

The mountings are a new development in mirror metal with the Texas Star etched on the same—these mountings will not rust or tarnish and require no polishing. The saddle has a two tone effect, which brings out the artistic beauty of the carving and design. Weight 35 lbs.

Price \$650.00

The Bridle and Breast Collar to match.....\$100.00

P. 2

Showman's
Choice

S. D. MYRES SADDLE CO.

EL PASO, TEXAS

S. D.



No. 600-X

This is a companion saddle of #500-X, made on the same tree, but with different shape skirts and with different style of carving—the same specifications apply to this saddle as to the other. Either of these saddles should be seen to be appreciated, as they are distinct in looks as well as in riding value—it is a pleasure to recommend this saddle, as it will meet your fullest expectation—it expresses the highest mechanical workmanship and the best quality in material. The artistic stamping will appeal to the most exacting.

The price of this saddle is.....	\$500.00
Breast Collar and Bridle to match.....	\$ 90.00

T
in its
the har
distinct
fork, 3
use and
tions f
with a
logue r

B



No. 300-X

This unusual saddle will appeal to those who want something distinct, something that is in its class to himself not only in looks, but in riding value. The fine carving on this saddle is the handiwork of a master—it is finished in two tone effect which brings out the beauty and distinctiveness of the carving. This saddle is made on the Myres Light Roping Tree with 14" fork, 3" cantle and 2½" horn made on 13½", 14" or 14½" tree—it is especially designed for ladies' use and for such it has no equal. The Myres Inlaid quilted seat is one of the outstanding contributions for riding purpose—this seat, we originated forty years ago and it has proven its worth with a constantly increasing demand. This seat can be used on any saddle illustrated in catalogue not showing the same, by the additional cost of installation.

Price \$350.00

Breast Collar and Bridle to match this saddle.....\$ 60.00

(A3)
 (2)
 The Texan

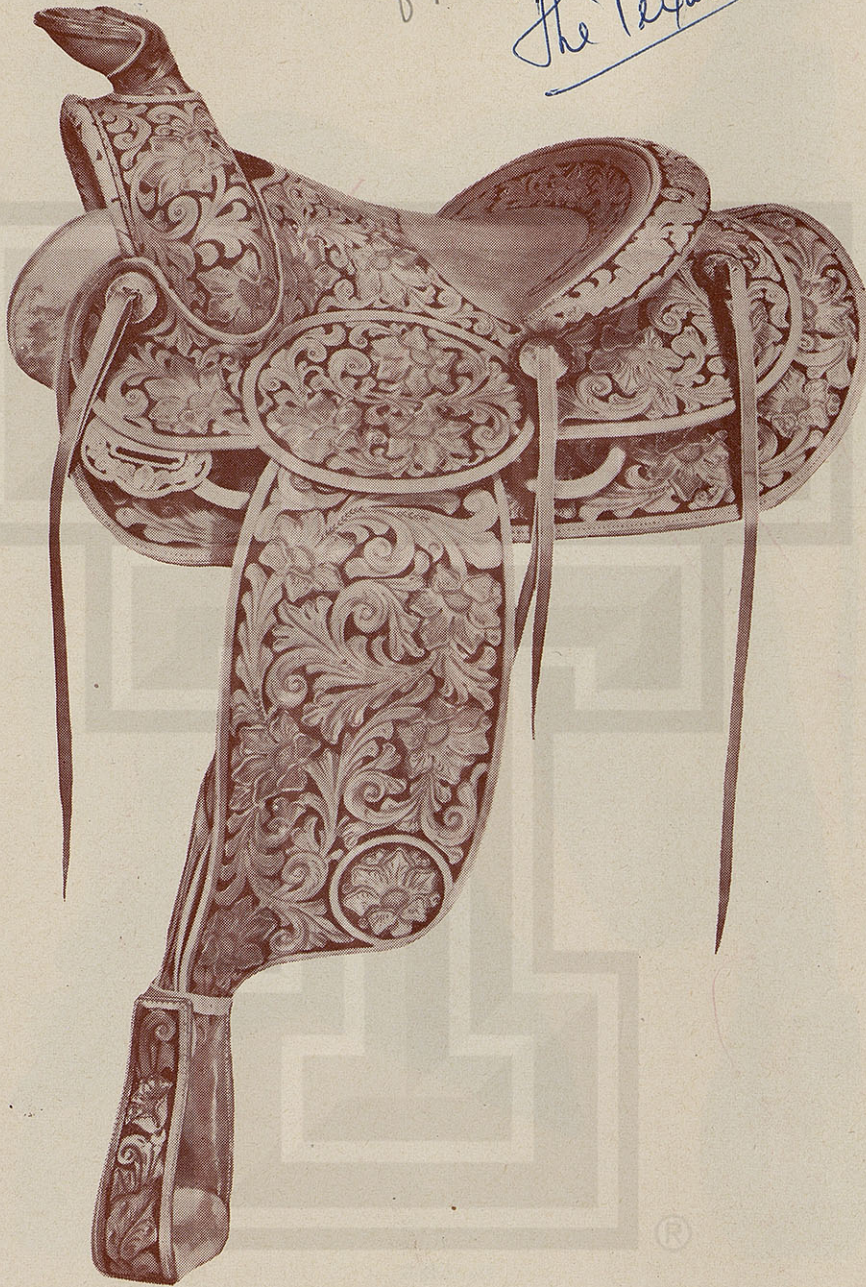
The Texan *The David Lide*

S. D. MYRES SADDLE CO.

EL PASO, TEXAS

31

The Texan



No. 700-X

Those of you who want a fine saddle with unusually beautiful floral designs you need go no further. Yes, it is made on the famous Crosby Tree, with 14" fork, 2½" cantle. Seats from 13½" to 15". The one piece fenders are especially shaped and designed for those who like to ride with a forward stirrup.

It is equipped with a 1¼" long latigo, hand carved off billet, hand carved flank billets, and hand carved stirrups.

Price \$300.00

S. D.

fork
ditch

also
The
you
and

(P4)

"Tio Sam" Special Solid Comfort



No. 165-X

This magnificent saddle is made on the Myres Low Bronc with Komfort Kante, 14" fork with seat from 13½" to 14½" trees with 3" cantle, which is wide and spready and has small ditch. Artistically carved in beautiful designs in two tone effect, which brings out the fine carving.

The Myres Special Inlaid quilted seat appeals to many, not only in light weight saddles, but also in heavy stock saddles. The constant increase demand for this style of seats proves its worth. The saddle is made of select material in the best mechanical way and carved by a master carver—you cannot be wrong in selecting this saddle—it will stand the hardest work, strong in looks and with the highest riding value.

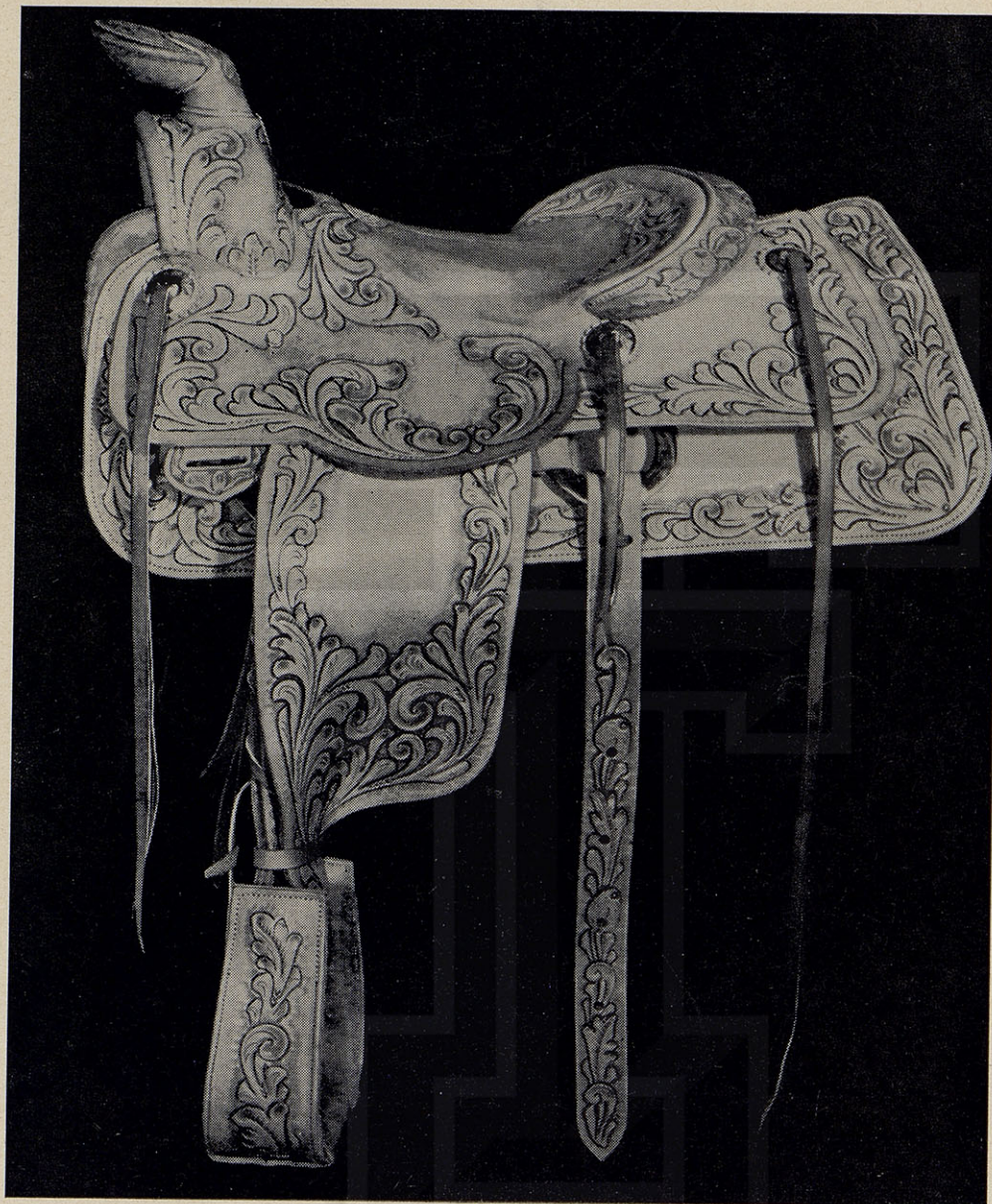
Price \$250.00

The Chas O Williamson

5

S. D. MYRES SADDLE CO.

EL PASO, TEXAS



Saddle No. 1101

Price \$250.00

The Charles O. Williamson Saddle

This saddle was made especially for Charles O. Williamson, author of the book, *BREAKING AND TRAINING THE STOCK HORSE*. He designed the tree completely with the idea of a level and correct seat. It is made with an EXTRA LOW SEAT in front, slick fork (A-fork), low cantle, and a large pelican horn. The saddle as shown has a 15 inch seat, 9 inch fork, 2 inch cantle, a 4 inch pelican horn, and a $\frac{3}{4}$ double rig. A longer or shorter tree may be had if desired. This tree can be used in any saddle shown in the catalogue.

— See Other Side —

S. D. MYRES SADDLE CO.

The Charles O. Williamson Saddle

(Continued)

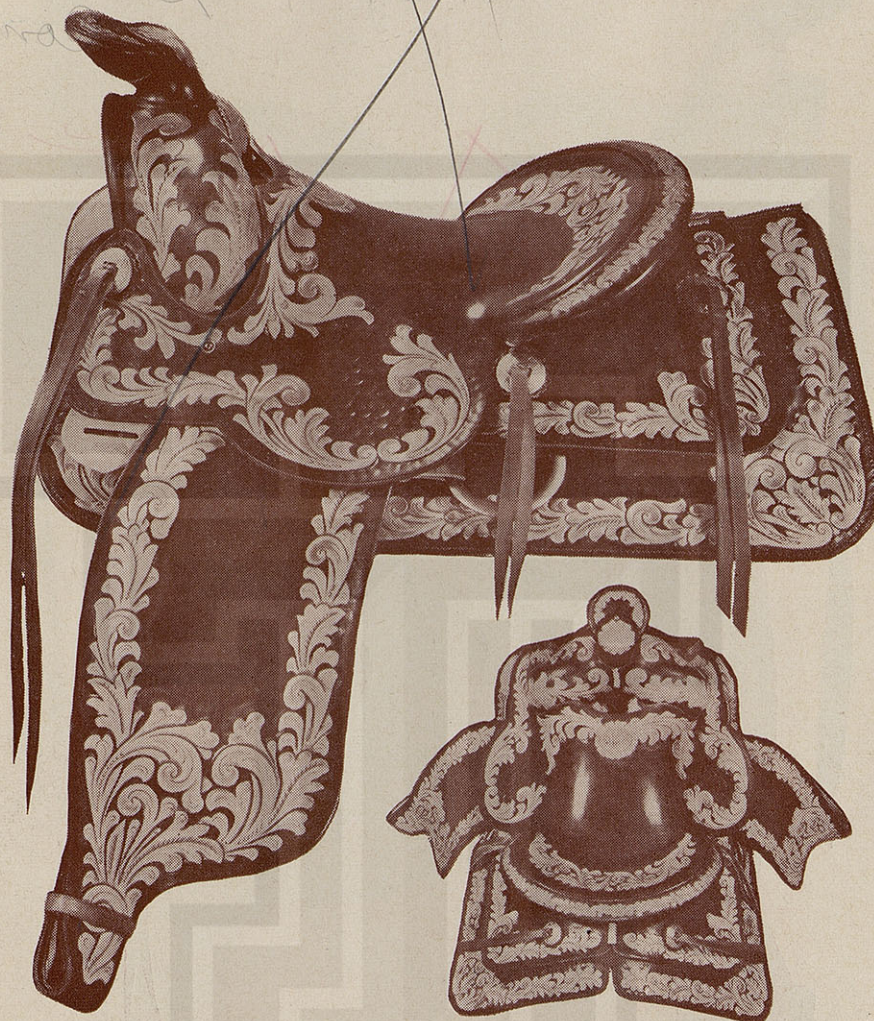
In his book, BREAKING AND TRAINING THE STOCK HORSE, Mr. Williamson has this to say in regard to riding: "When riding at gaits faster than a walk, not only the legs, but half the weight of the body should be on the heels, the muscles of the legs relaxed, thus bringing the heels much lower than the toes. The rider more or less "floats" in the saddle. The jar of the horse is thus taken and distributed in the ankles, the knees, the crotch, and the waist and amounts to nothing. The faster the gait and the rougher the action, the farther forward the body should be leaned, or rather the farther forward the seat should be, the knees well forward and the heels well back of perpendicular; by all means, not out in front. The more raise in the front of the seat of the saddle, the harder it is for the rider to get "down" and forward, over the center of gravity of the horse."

...RES SADDLE CO.
 The Charles O. Williamson Saddle
 (continued)
 PEAKING AND TRAINING THE STOCK HORSE.
 to say in regard to riding: "When riding at gaits, muscles of the legs, but half the weight of the body is taken and more or less, "floats" in the ankles, the rider and distributed in the body bringing the seat forward to nothing. The knees should be perpendicular; by all means, the harder the seat of the saddle, the harder it is over the center of gravity.

RES SADDLE CO.

EL PASO, TEXAS

S. D.



No. 731-A — THE CURTIS

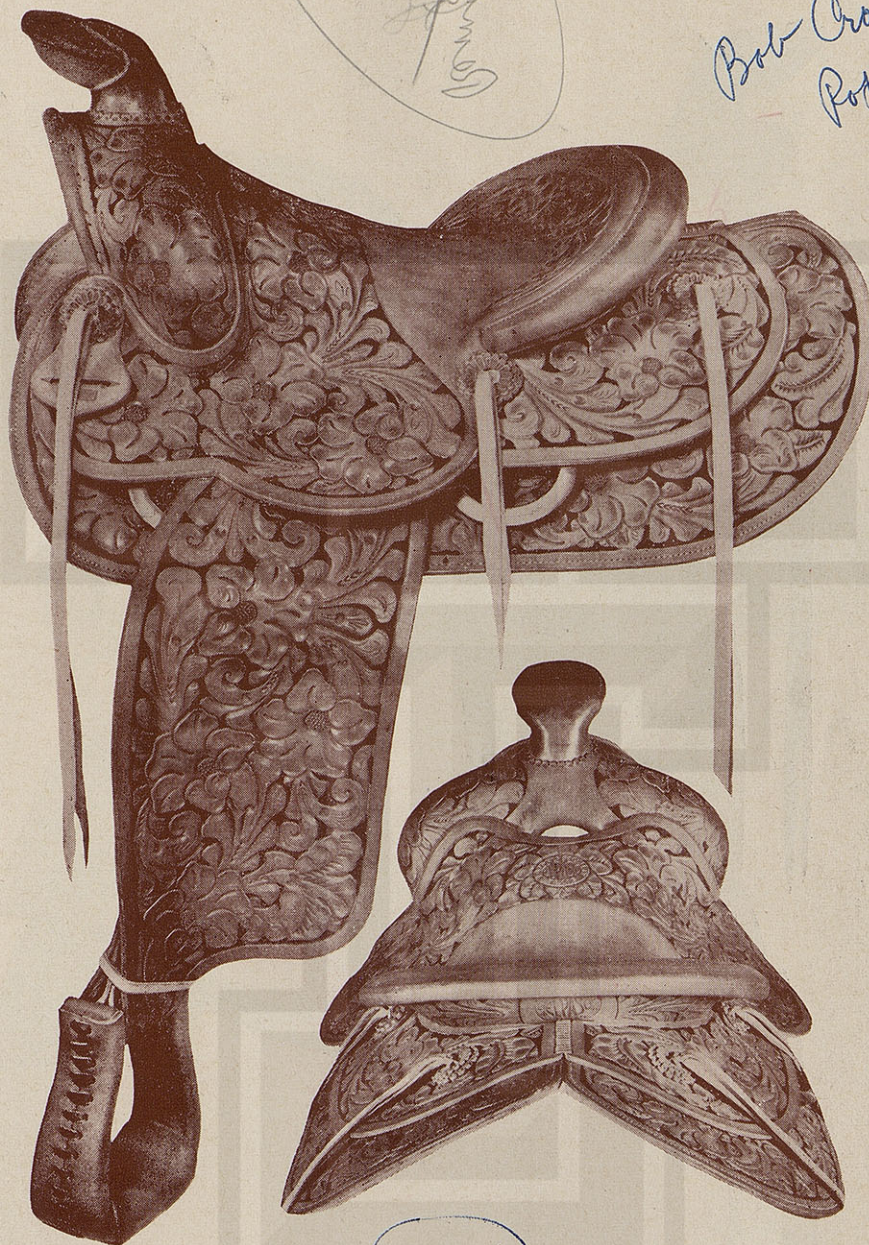
The Curtis Roper needs no introduction. It has been used by ropers all over the country for many years, and its popularity rates high. The hand carved floral designs being in natural leather color with the black background gives this saddle a very beautiful finish and effect.

The seat comes in 13½" to 15"; 13" fork; 2½" cantle; with No. 21 flank cinch, No. 11 short latigo and No. 21 long latigo. No. 15 stirrups 1½" to 3" in width.

Price \$250.00

leath
shap
it a

roun
and
wide
stirr
cinch



No. 75-M

The finest of workmanship and materials are used in this Crosby Roper—made of heavy leather for heavy work and long wear. The Bob Crosby Roper is one of America's most popular shape trees for roping and flat country ranch work. This famous tree, plus Myres quality makes it a truly fine saddle that you will enjoy owning and riding.

SPECIFICATIONS:—14" seat, 14" fork, 2½" low cantle. 3½" Mexican flat horn—skirts full round and lined with the best sheep skin, blocked to fit the tree—rigging is double, flat rings and dees. A ¾" rigging will be furnished upon request. One piece Arizona style fenders 8½" wide, with 3" stirrup leathers, half double—Cheyenne roll. Equipped with full leather covered stirrups, in widths from 1½" to 3". Brass ring angora front cinch, latigo, off billet and flank cinch. Weight 29 lbs.

Price \$195.00

*Quarter Horse
Roper*

S. D. MYRES SADDLE CO.

EL PASO, TEXAS

S. D.

1

Remake



No. 285-A — THE QUARTER HORSE ROPER

The Quarter Horse saddles are something entirely new in saddle making. Many months ago some of the top ropers got together and designed the tree from the ground up. They are especially designed for Quarter Horses, and have extra wide side bars in the rear under the cantle. The gullet is extra wide—in fact, the entire tree is so designed and made to fit the BROAD SHOULDERED, SHORT COUPLED QUARTER HORSES of today.

The fork is about 8" high from the floor, with a 6½" gullet; the width of the fork is 13½", the cantle 2". Tree can be had in any seat lengths.

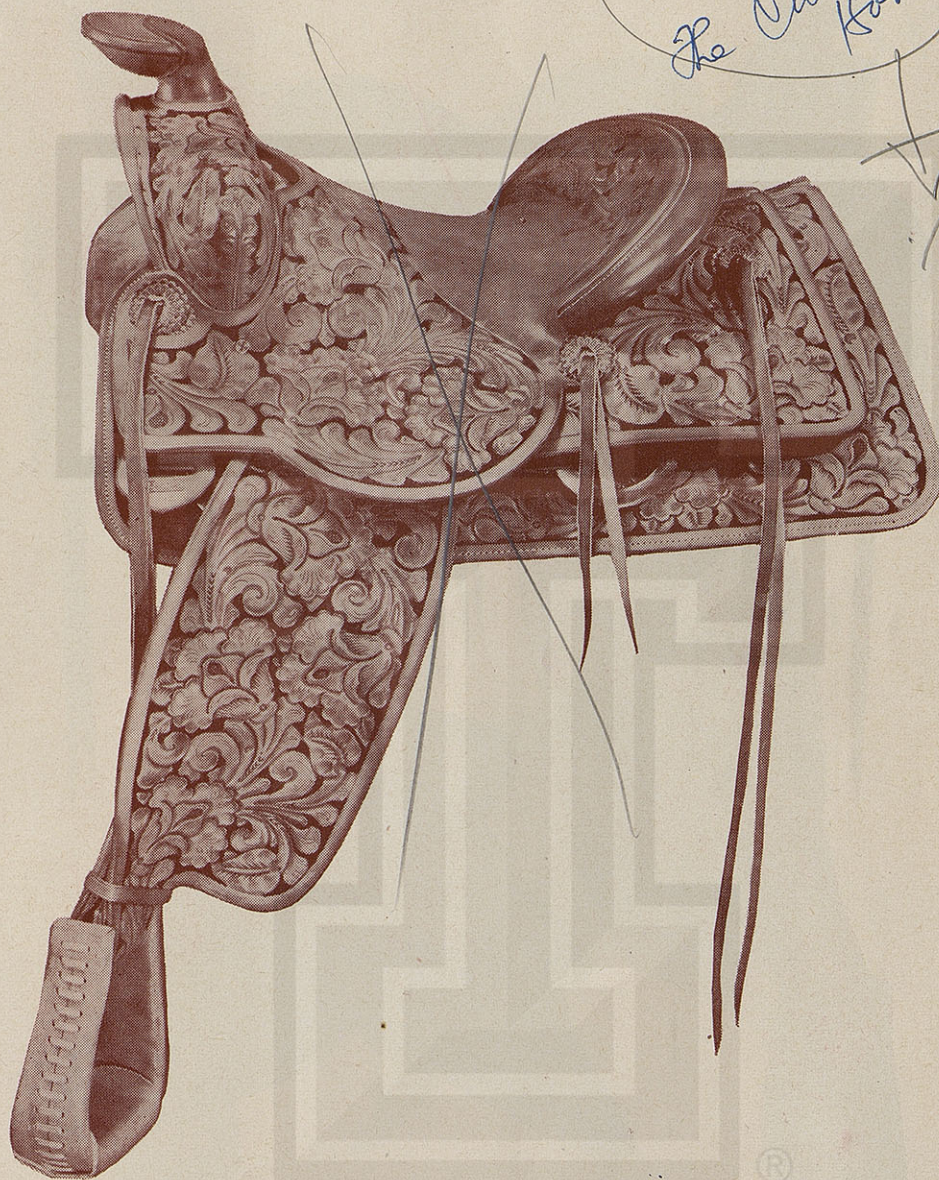
Price \$225.00

T
width o
tree. T
fork.

XAS

S. D. MYRES SADDLE CO.

EL PASO, TEXAS



No. 275-B — THE QUARTER HORSE CUTTING HORSE SADDLE

The same description of the Quarter Horse Roper applies here also. In this tree the same width of gullet, and the same wide spread and flatness of the bars are the same as in the Roper tree. The fork or swell is 14", and the cantle is 3" high, which gives more leg room under the fork.

months
ey are
er the
fit the

ork is
\$225.00

Price \$225.00

69

S. D. MYRES SADDLE CO.

EL PASO, TEXAS

All-Purpose
Ranch



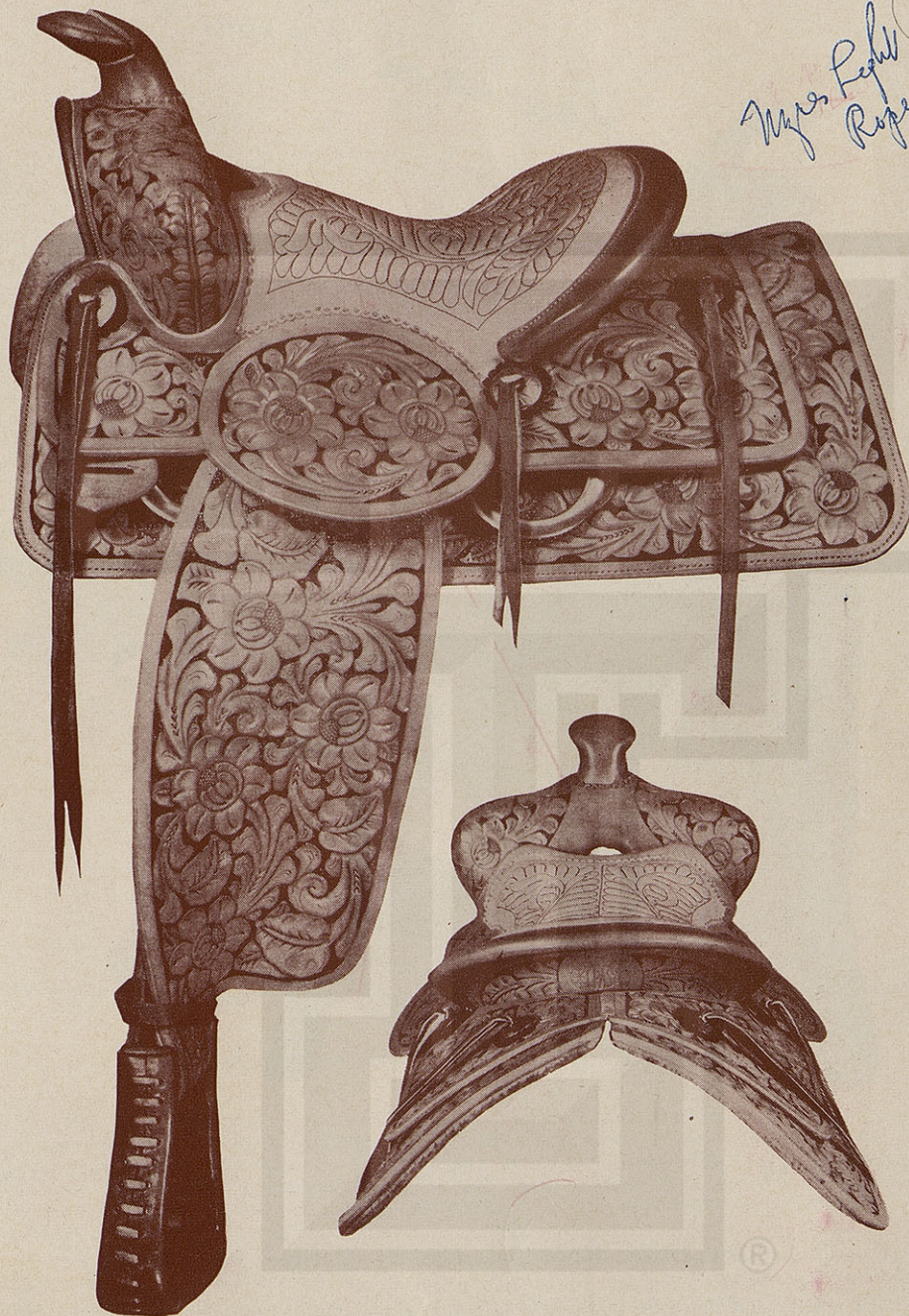
No. 235-D

This saddle is made on the Myres Low Bronco tree with Komfort Kante. The special shape of the fork gives plenty of leg room, the cantle is wide with small dish—this tree is noted for its easy riding value, made with 14½" seat, 14" fork and 3" cantle, No. 15 stirrups, No. 21 flank cinch and No. 63 mohair front cinch. The saddle is finely carved in artistic designs. Weight approximately 29 lbs.

Price \$197.50

S. D.

T
Light F
dle can
Foam c
seat is
and a
constan
has spl
Weight



No. 66-B

This is one of those distinguished Myres Special Inlaid quilted seats, made on the Myres' Light Roping tree, 14" fork, 3" cantle, 2½" horn head and the seat from 13½" to 14½". This saddle can be made with round skirts at the same price—we will especially call attention to the Air Foam quilted seat, which qualifies this saddle as one of the best for ladies' use. The quilted seat is installed on the other seat in such a way that in case it wears out a leather seat remains and a new seat can be installed at will. These quilted seats have proven their worth by the constant increase in the past years. This saddle is well suited for all light riding purposes, it has splendid tree, fine material and the best of mechanical work and carved in artistic designs. Weight 28 lbs.

Price \$190.00

A11

Low Down Roper



Weight, 30 Pounds

No. 237

Price \$215.00

Low Down Roper—Large 3" Sterling Horn

The quality and finish on this saddle is a high expression of the saddle making art. This tree has many admirers and is especially designed for roping purposes—it is ideal tree for easy riding.

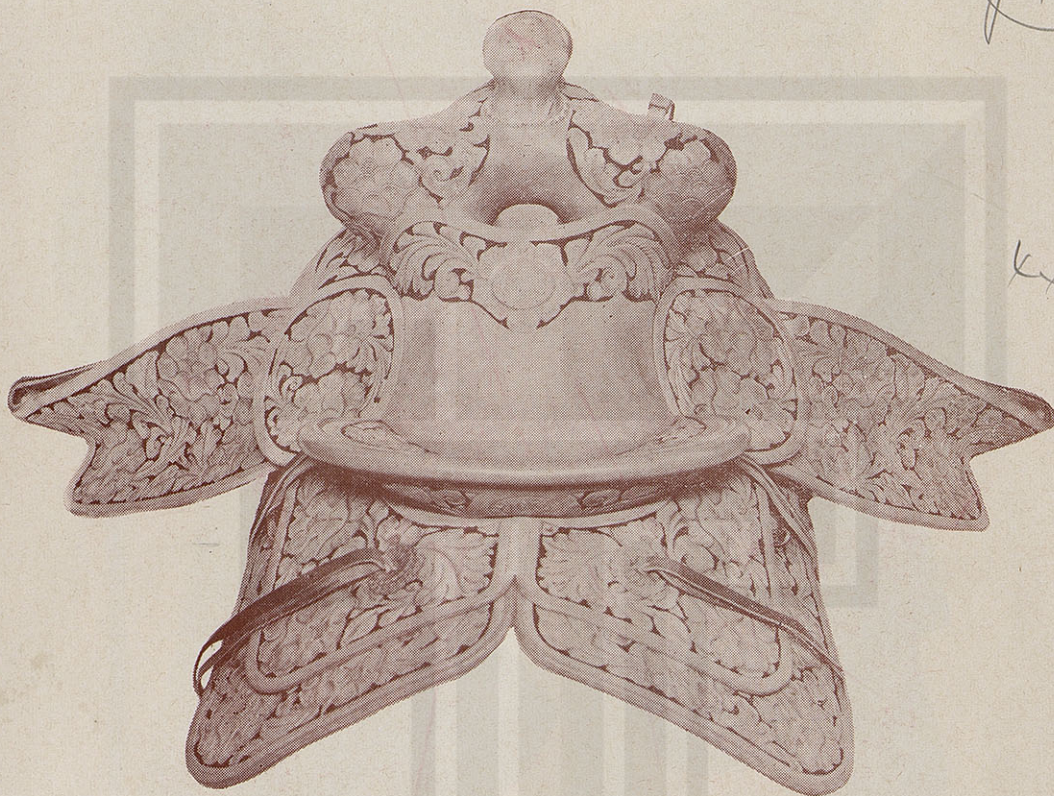
The quality of material and workmanship is the very best; the floral carving is distinct and artistic, finished with brass rings, Angora front cinch and leather flank cinch and with full leather covered stirrups. We can recommend this saddle in the strongest way.

This saddle is made on 14" tree with 13" fork. Larger or smaller tree can be used.

2-

E. J. Rancho

12



K-5

Weight, 32 Pounds

No. 915

Price \$197.50

"Myres Rancho Tree"—Komfort Kante

This saddle is made on the Rancho tree—a new creation in trees. It possesses the greatest characteristics that have been added to tree-making in years. It has a wide concave 3" cantle which is ideal for large riders and the cantle is so shaped that it conforms to the contour of the user. This saddle is made in a 13" to 14½" seat, depending on the size of the user. It carries a 14" fork and 2½" horn head. The fork or seat can be changed to suit the user. Also, a Mexican horn can be used.

This saddle is beautifully carved and made with Arizona fenders, round skirts can be used when wanted. It is fitted with No. 17 stirrups carved to match the saddle—1¾" long chrome latigo and 2¼" short latigo—carved No. 21 flank cinch carve, brass ring—Angora cinch.

130

Mexican Roper



Weight, 29 Pounds

No. 207

Price \$195.50

Low Down Roper—Large $3\frac{1}{2}$ " Mexican Horn

This saddle is built on a Low Down Roper tree with $3\frac{1}{2}$ " Mexican horn. The saddle is designed and made strictly for all practical ranch purposes and it is especially adapted for roping. We have placed a number of these saddles, and without exception, with the most favorable results. It is a pleasure to recommend this tree and also the saddle. The same is beautifully carved in artistic designs by master carvers. The workmanship is outstanding. All material is of the highest quality.

The saddle can be made with round skirts when so desired and other changes will be made to suit the rider. It is made regularly on a 14" tree with a 13" fork—either a larger tree or larger swell can be had.

It is furnished with No. 21 flank cinch, $2\frac{1}{4}$ " short latigo and $1\frac{3}{4}$ " long latigo and No. 17 stirrups.

For over fifty years, we have been making saddles for the best riders of the West from whom the practical and outstanding points of saddle making have been learned. This has been skillfully incorporated in our saddles.

new Remade

Myres Special Roper

\$ 14



Weight, 30 Pounds

No. 155

Price \$195.00

Myres Roper

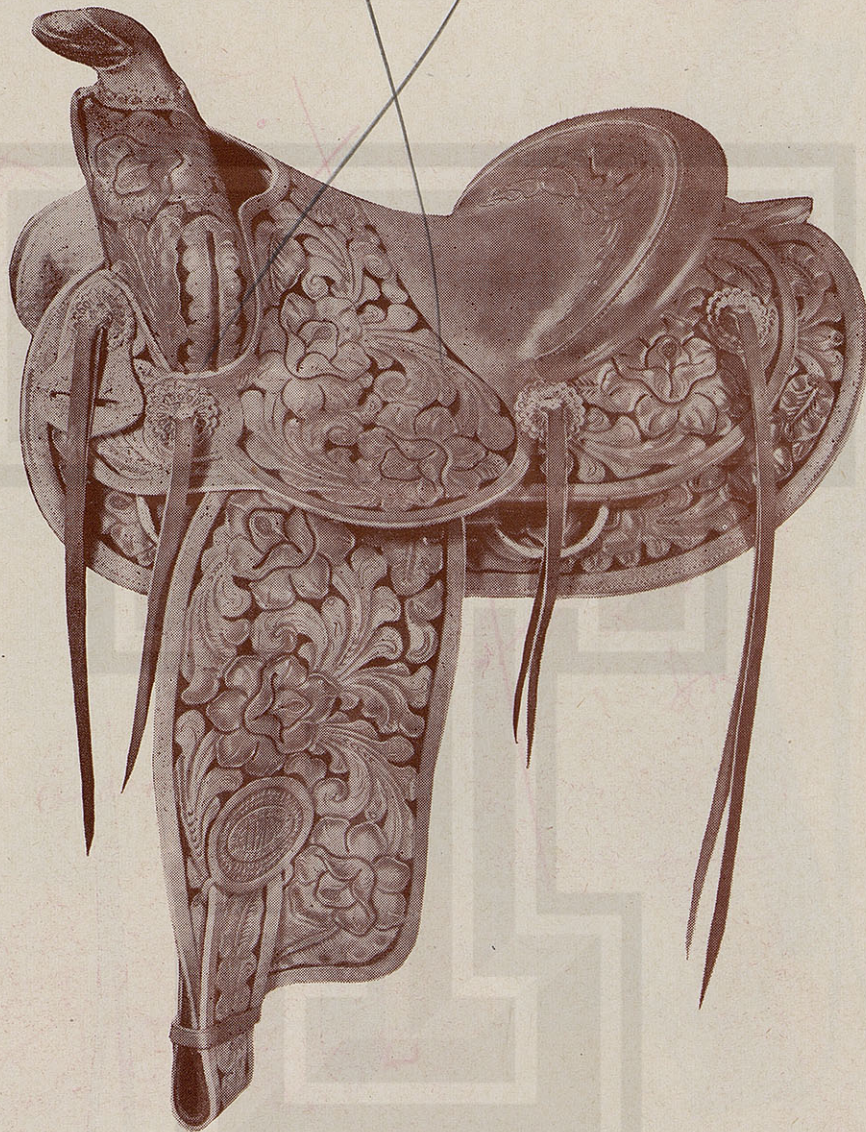
This saddle is made on the "Myres Roping Tree" with 14" seat, and a 12" fork. The cantle is 2½" with Cheyenne roll. The picture shows this to be a rawhide braided horn, but in ordering, would suggest a regular horn instead. The skirts are 28"x14", lined with bark-tanned wool skin. 3" stirrup leathers, doubled at points. Angora front cinch, and No. 21 flank cinch. No. 15 stirrups 1½" to 3" in width. A longer or shorter tree can be used.

This saddle is designed and made strictly for a "roping saddle", and as such, it is without equal. If you are looking for a saddle that can "take it", you need look no farther.

If desired this saddle can be made with round skirts and one-piece fenders.

S. D. MYRES SADDLE CO.

EL PASO, TEXAS



No. 74-B

The above saddle is a favorite of both men and women. The same high quality of workmanship and materials is used in this saddle as is used in the higher priced ones. It is so designed and made to give the rider many years of easy comfortable riding in both work and play.

The tree comes in sizes of $13\frac{1}{2}$ " to 15". The cantle is 3", the fork 14". It is equipped with No. 21 flank cinch, No. 21 latigo, and No. 7 stirrups.

Very economically priced at.....\$165.00

S. D.

T
It is sh
light ro
that an
S
13½" t
Texas
Weight



No. 50-X

This light roping tree is made with rope border stamp for those who want a smooth saddle. It is shown with a $\frac{3}{4}$ " double rig. Notice the contour of skirts and fenders. The tree is a Myres light roper, but is built for the heaviest work. We have many riding academies, and dude ranches that are using this saddle, and say that it is most economical saddle they have ever used.

SPECIFICATIONS:—Myres Light Roper tree—heavy rawhide covered, 14" swell, 3" cantle, 13½" to 15" seat. Rigging $\frac{3}{4}$ " double as shown, but a full can be had upon request. Fenders are Texas ranch style shaped to the contour of the leg when riding, 8½" wide with 3" stirrup leathers. Weight, 27 lbs. Price equipped with cinches, latigos, flank cinch, etc.....\$155.00

Western Pride

S. D. MYRES SADDLE CO.

EL PASO, TEXAS

S. D.



No. 78-X

This saddle is made on Myres Light Roper tree, which has proven tops as it has given splendid satisfaction. The tree has a 14" fork, 3" cantle, seat from 13½" to 15", the fork is well shaped to give plenty of leg room.

The saddle is made of the best material by the best mechanics and the carving by the most artistic carver. This saddle will appeal to any who wishes one for service, one for looks and one for riding value. — IT IS WELL SUITED FOR LADIES' USE. All the trimmings are in keeping with the high grade saddles.

Price \$175.00

MAKERS OF FAMOUS COWGIRL SADDLES



When you are in need of a trophy saddle to be given to your rodeo sponsor, the champion calf roper, the champion bronco rider or for any other special award, contact us in advance, and we will make it for you. The saddle shown above is one which was given to the champion cowgirl in El Paso in 1946.

Price upon request

S. D. MYRES SADDLE CO.

EL PASO, TEXAS

MAKERS OF FAMOUS COWBOY SADDLES



No. 301

"Myres' Special" Tree—15x14-inch

This saddle was recently improved for those who wanted a light up-to-date saddle on a tree that has been tested for years. Something to ride well, wear well, and look well. It has proven a phenomenal success and we can recommend it in the strongest way, as it has been tested by time and has made good. It is built on a 15" seat with a 14" fork; we also make it on a 14" and 14½" seat and larger fork. Skirts 15" x 29" woolskin lined—3" stirrup leathers—full buckskin inlaid seat. This seat is inlaid on the regular seat and Rubber padded, which acts as a shock absorber. Artistically hand-carved, all laps hand-laced. No. 12 stirrups, No. 21 flank, Angora front cinch. For an easy riding saddle it has no equal. Made with round skirts when wanted.

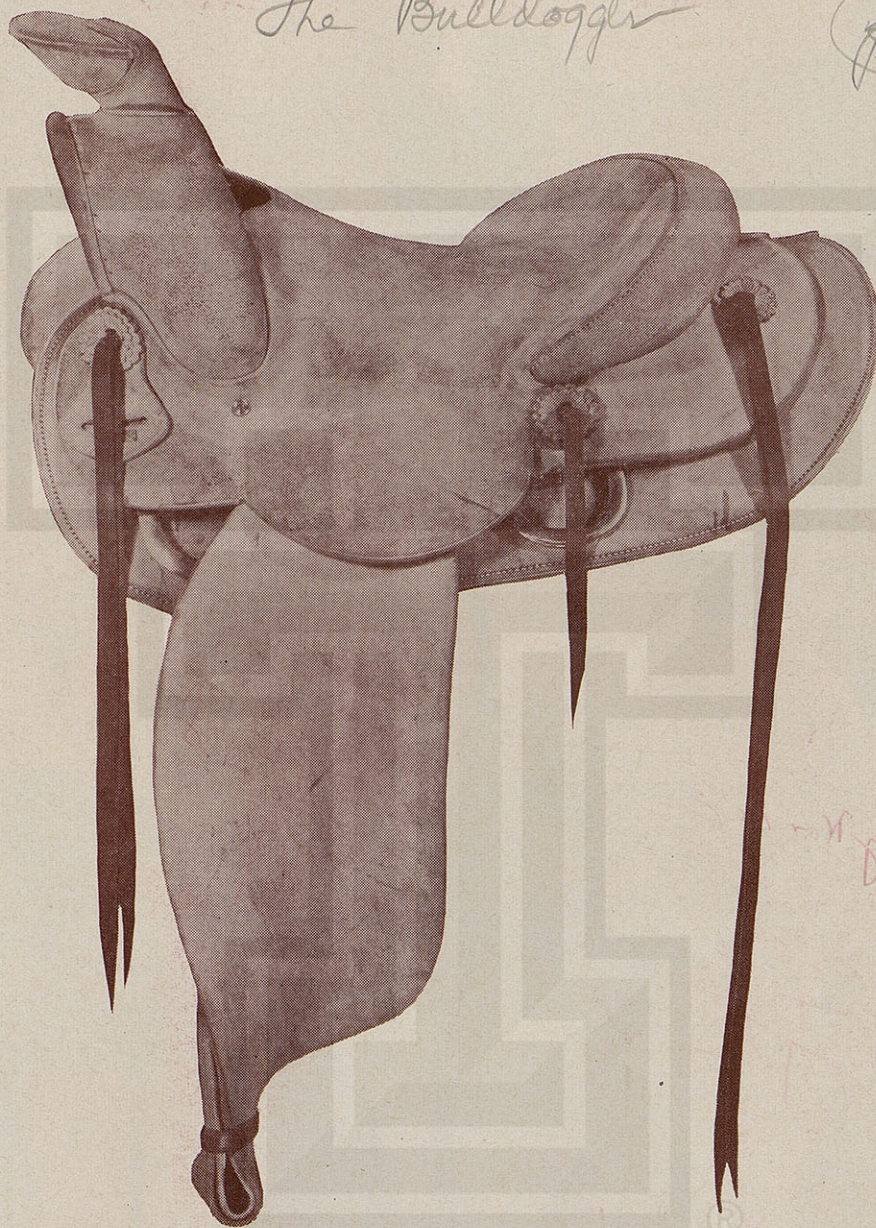
Weight, 29 lbs.

Price \$210.00

NOTE—Sam D. Myres designed this saddle over forty years ago for personal use and it has proven the greatest saddle by far which we have ever made.

The Bulldogger

16



No. 77

A rough side out saddle for outside rough men. A good solid saddle that will take the roughest possible punishment. For the plains, prairie, or brush country, it has no equal.

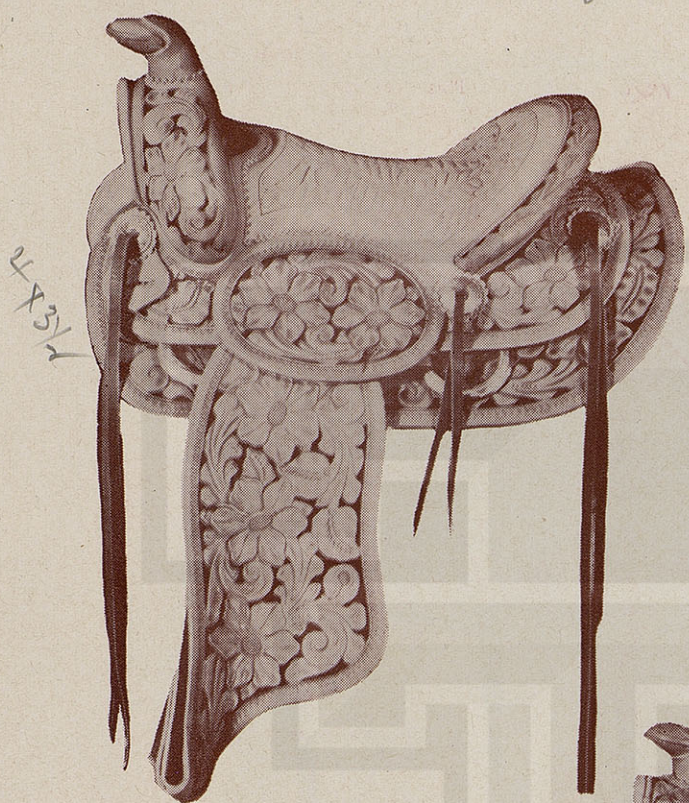
Made on the Crosby tree with 14" fork, 2½" cantle, 3½" flat Mexican horn, seats from 13½" to 15". Equipped with No. 21 long latigo, No. 21 flank cinch, No. 11 short latigo, and No. 15 rough side out stirrups 1½" to 3" wide.

Price \$165.00

P17

S. D. MYRES SADDLE CO.

EL PASO, TEXAS



The Arizona

No. 375-A

This saddle was made especially for the Junior Cowboy or Cowgirl. It is made with Arizona one-piece fenders, 3" cantle, 13" fork, and with seats in 13" and 13½". Also, it has the Rubber Inlaid seat that has become so popular the last few years. Made with full round skirts, and with the Cheyenne cantle roll hand carved. Notice that it is double rigged, and has flat rings and dees too. Full leather covered stirrups No. 15 style.

Price \$140.00

No. 144-B — "THE BOY WONDER SADDLE"

The Boy Wonder
No. 144-B

"THE BOY WONDER SADDLE"

This is the strongest expression in a saddle for YOUNG AMERICANS, and is designed for the ages of from five to ten years—this saddle is the highest in quality having the best tree, leather and workmanship and can be used for years. The saddle is built so the rider may acquire a natural position in riding as his ability for future riding is developed at this age.

In ordering give the age, the weight, the height so a saddle can be made accordingly. The saddle is fully equipped. Weight 23 lbs.

- Price, full carved\$115.00
- Border Stamp\$ 95.00
- Cut Crease Finish\$ 90.00

Give the Young Ones a Break



S. D. MYRES SADDLE CO.



Handwritten: *El Paso, Texas*
Handwritten: *John H. Rider*
No. 365-B

This one was also made especially for the Junior Cowboy or Cowgirl, only it does not have the Foam Inlaid seat. The cantle is 3" high and has the Cheyenne roll. Also, double rigged, and has flat rings and dees.

Furnished with flank cinch, long latigo, mohair cinch, and off billet. Full leather covered stirrups.

Price \$125.00

No. 25-B—Corona. Made of carpeting, with the under side lined with lamb skin. The Roll is made of fine 100% virgin wool. The color as shown is black and white, but any color combination can be had.

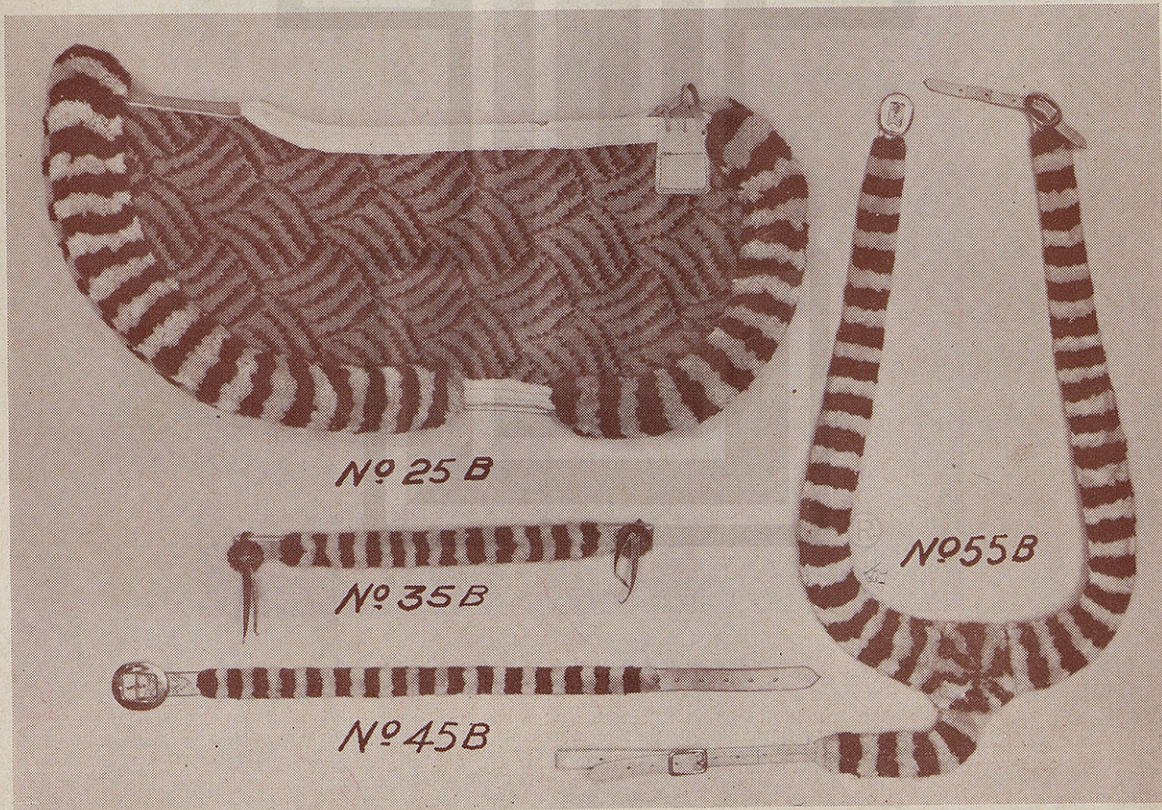
Price \$50.00

No. 55-B—Martingale, to match.

Price \$17.00

No. 45-B—Nose Band 4.00

No. 35-B—Brow Band 4.00

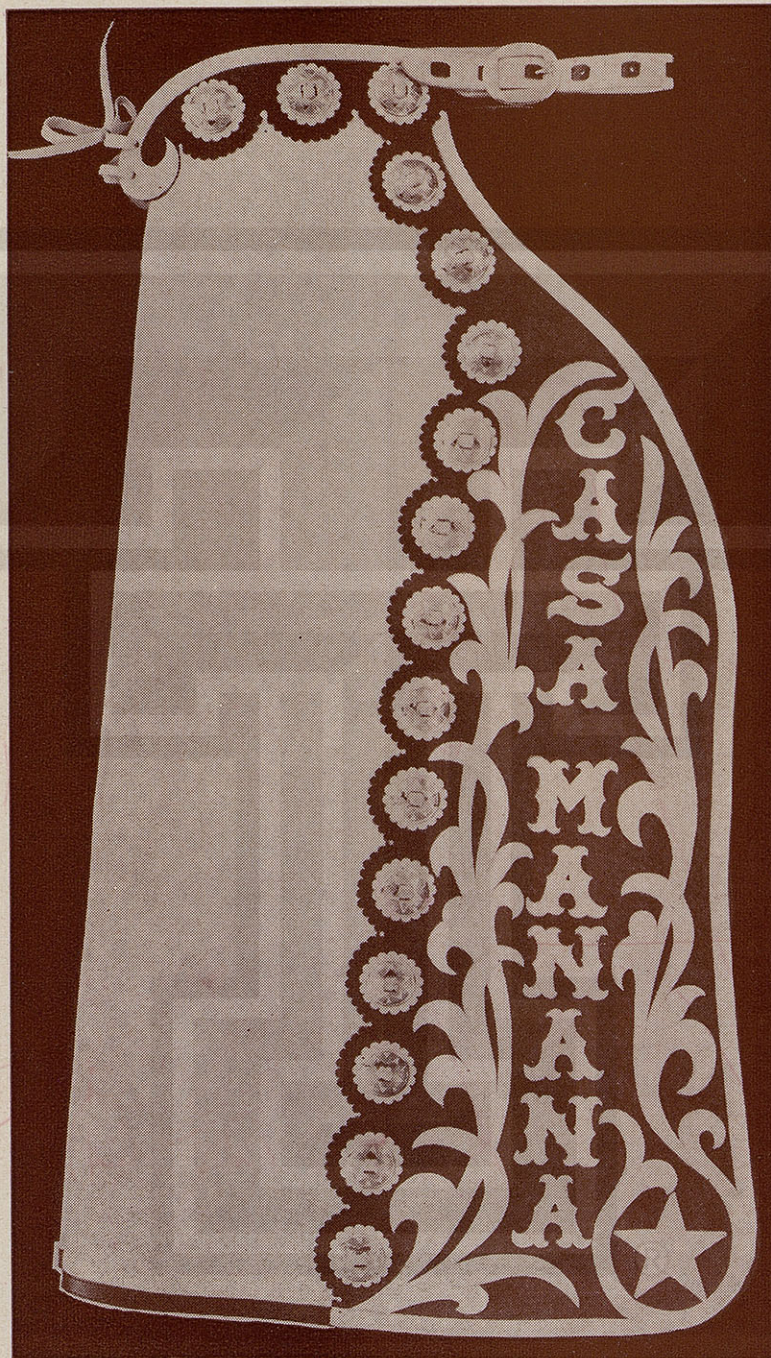


19

in

S. D. MYRES SADDLE CO.

EL PASO, TEXAS



SPECIAL CHAPS

No. 1533

Price \$85.00

This is the most beautiful chap ever created that was not highly silver mounted. We make many chaps of special design, this being one of them. If you have in mind a special "SHOW" chap, "Let Myres make them."

The above chap is made of white Elk with a blue Calf in contrasting colors. "CASA MANANA" is surrounded with a floral design that is unusually effective and attractive, the two colors making a most happy combination. The chap has a very large wing, but is not excessively heavy; for show purposes it is ideal and most effective.

S. D.

T
locali
is 5 o
furnis
urally

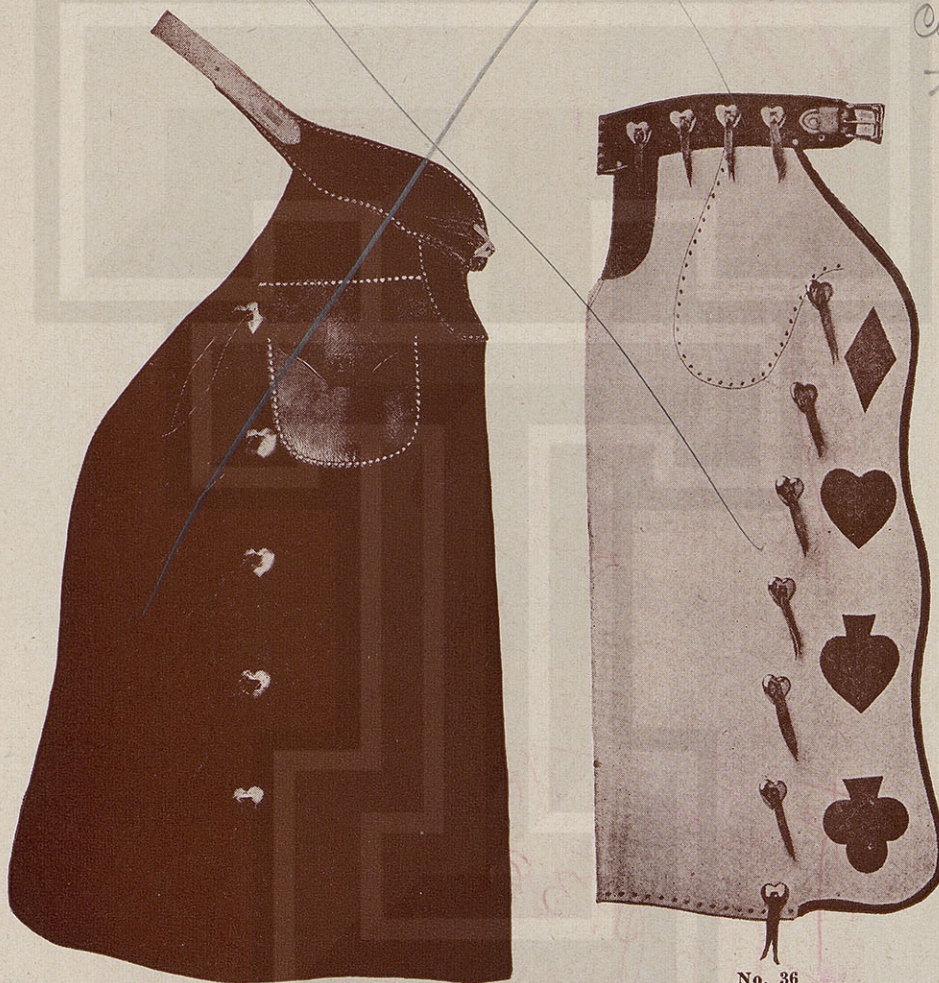
W
of ex
chrom
produ

No. 4
belt and
er black
ful chap

No. 3
a comp
ception
made o
and 8"

There are many grades of chap leather, also heft or weight of chap leather. In certain localities the heaviest grade is required, in other territories we use a medium weight which is 5 ozs. stock, this is well suited for any work that is done on the ranch and can be furnished in cream color, black color or brown color. The highest grade of chap is naturally the better—the selection, however, on the cheaper grade a good tannage is used.

We give special attention to ladies' chaps and for which we use a lighter grade leather of excellent selection. Boys' chaps are made in light heft. On cheaper grade, we use a chrome which has good wearing value and will give excellent service and enable us to produce a chap at a lesser price.



No. 36

No. 40

No. 40—CHAP. Made of select Elk skin, belt and pockets buck laced, made of either black or yellow stock. A most wonderful chap for looks and wear.

Price \$37.50

No. 38—CHAP. (Not illustrated) this is a companion chap to No. 40 with the exception that it has three snap fasteners, made of either black or yellow Elk skin and 8" wings at the bottom.

Price \$35.00

No. 36—CHAP. "The Ace", Made of combination of two colored Genuine Elk skin with cream or brown colored body, grain side out, snaps and rings or with buttons, finished with nickel conchas—full laced wing, inside pocket.

Price \$50.00

A handsome and very serviceable chap and will please the most exacting.

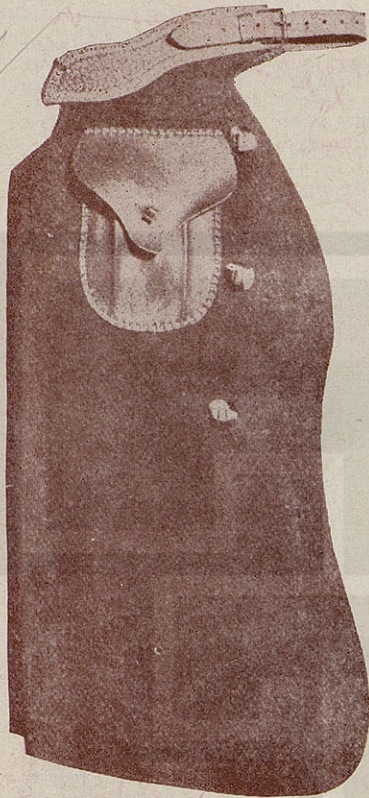
No. 34—CHAP. (Not illustrated) this is a companion chap to No. 36, has chap wings—three snap fasteners—made of select cream Elk skin, and excellent chap of splendid wearing value—outside pockets if preferred.

Price \$35.00

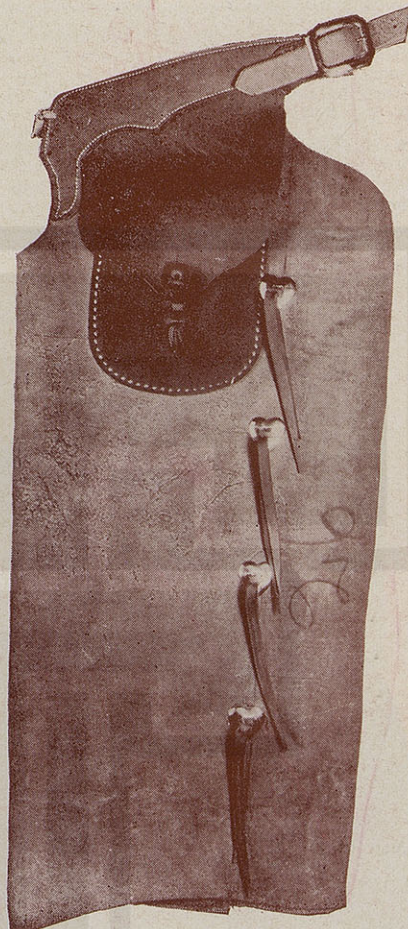
\$20
In

S. D. MYRES SADDLE CO.

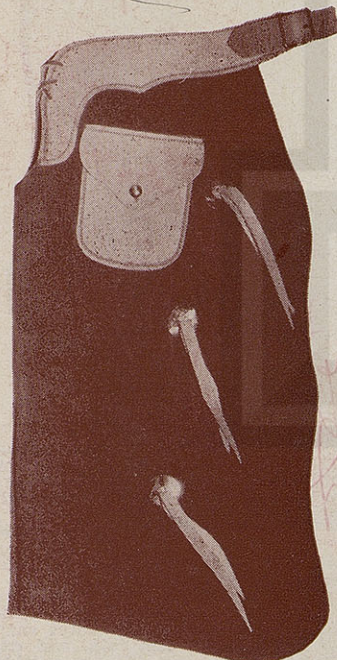
EL PASO, TEXAS



No. 22—Price \$35.00



No. 26—Price \$32.50



No. 12—Boys' Chap

No. 22—CHAP. This chap is made of 5 oz. Elk skin flesh side out. It has extra large pocket—three snap fasteners chap belt of skirting. We can recommend this chap for any ranch work—it will give splendid service.

Price \$35.00

No. 12—BOYS' CHAP. This chap is made of select light leather especially selected and has splendid wearing value. We make these chaps in several colors: rose, blue, and green. They are trimmed in opposite colors.

Price from 4 to 6 years.....\$10.00

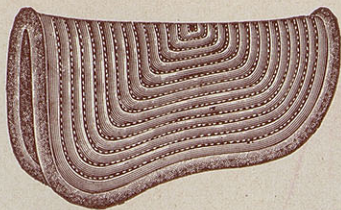
Price from 6 to 8 years.....12.50

Price from 8 to 10 years.....15.00

Made in a light grade Elk skin at \$3.00 per pair additional. Elk skin chaps in cream color.

No. 26—CHAP. Made of heavy California chap leather extra heavy either grain or flesh side out—three or four snap fasteners as preferred. This chap is designed for the heavier work and for such it has no equal. If you want something good that will stand up under the hardest pressure, this chap will do the work.

Price \$32.50



No. 406 — TEJAS RIDING SADDLE PAD

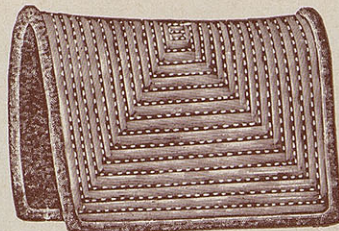
Approx. 90% pure hair felted blanket, firmly interlaced through burlap. Top or back heavy army duck. A reliable and sanitary cushion under the saddle. Highest quality throughout. Size 28" x 28".

Price \$3.95

No. 407 — TEJAS RIDING SADDLE PAD

Same as above only 30" x 30".

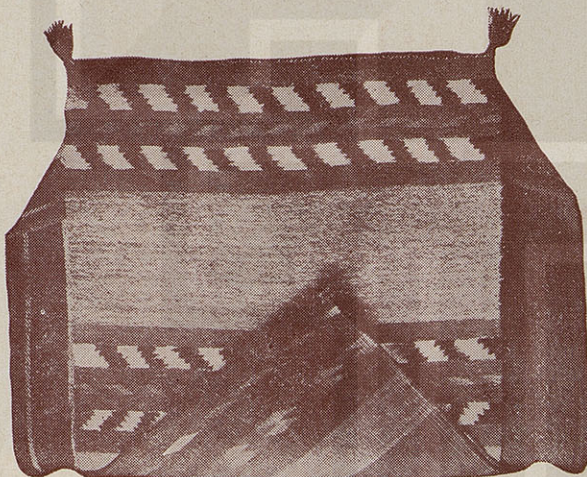
Price \$3.95



No. 401 — TEJAS RIDING SADDLE PAD

Approx. 90% pure hair felted blanket, firmly interlaced through burlap. Top or back heavy army duck. A reliable and sanitary cushion under the saddle. Highest quality throughout. Size 28" x 28".

Price \$3.95



Genuine Indian Navajo Blankets

These blankets are made by the Navajo Indians, and are the best saddle blankets made.

Single Navajo No. 1 quality.....	\$ 8.50
Single Navajo fancy colors.....	10.00
Double Navajo No. 1 quality.....	16.50
Double Navajo fancy colors.....	18.50

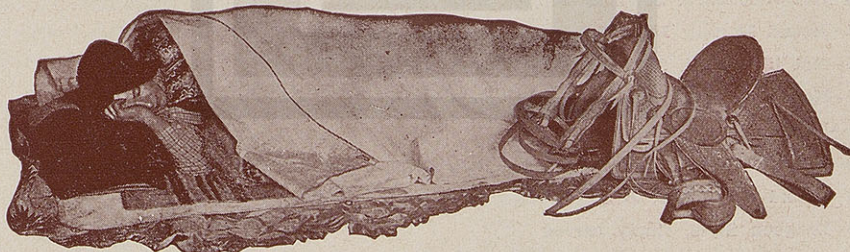
These are all wool warp



The Snyder Brand saddle slicker

Price from size 2 to 0.....\$10.00

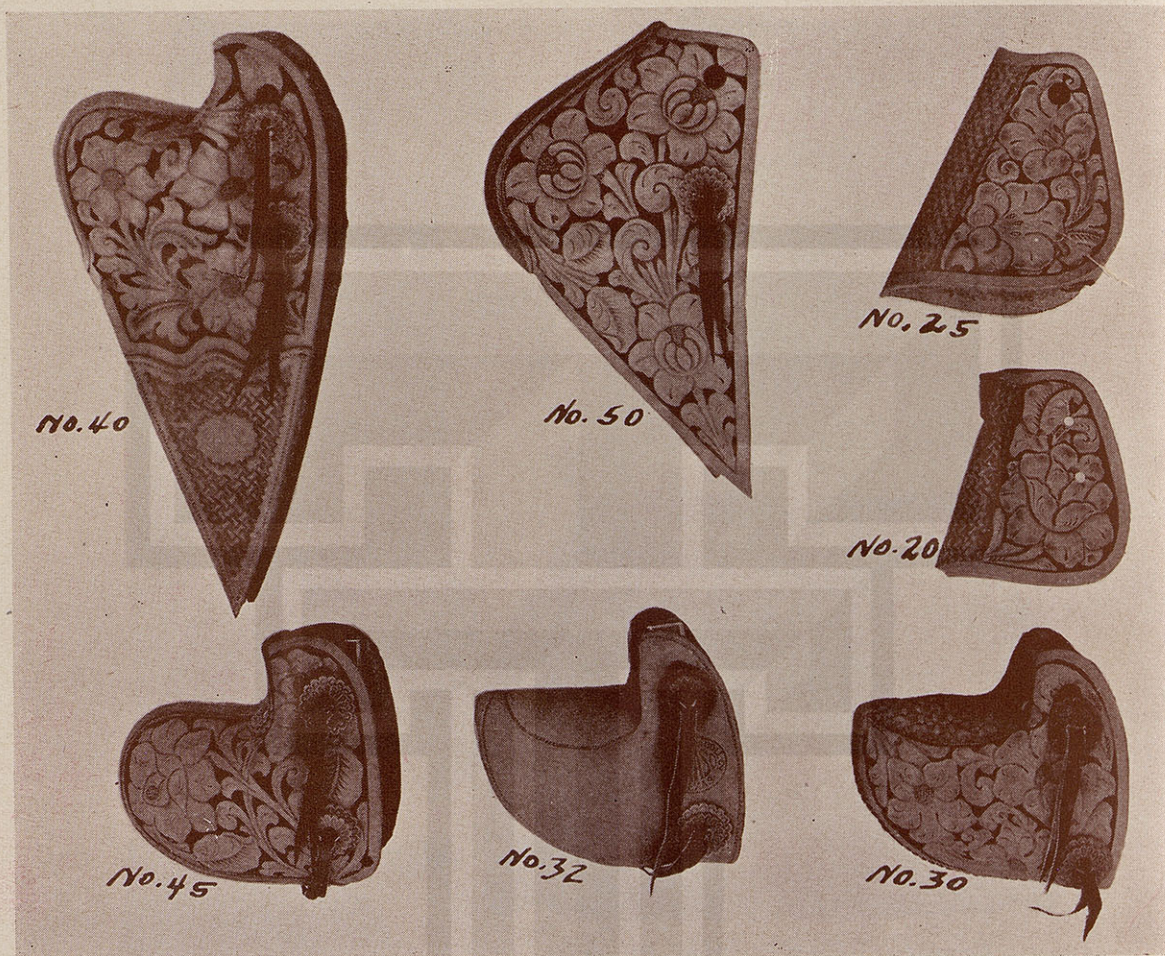
Price for size 00..... 11.00



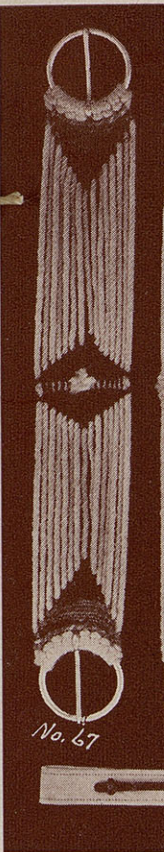
"Myres Quality Tarps"

Finished with Snaps and Rings

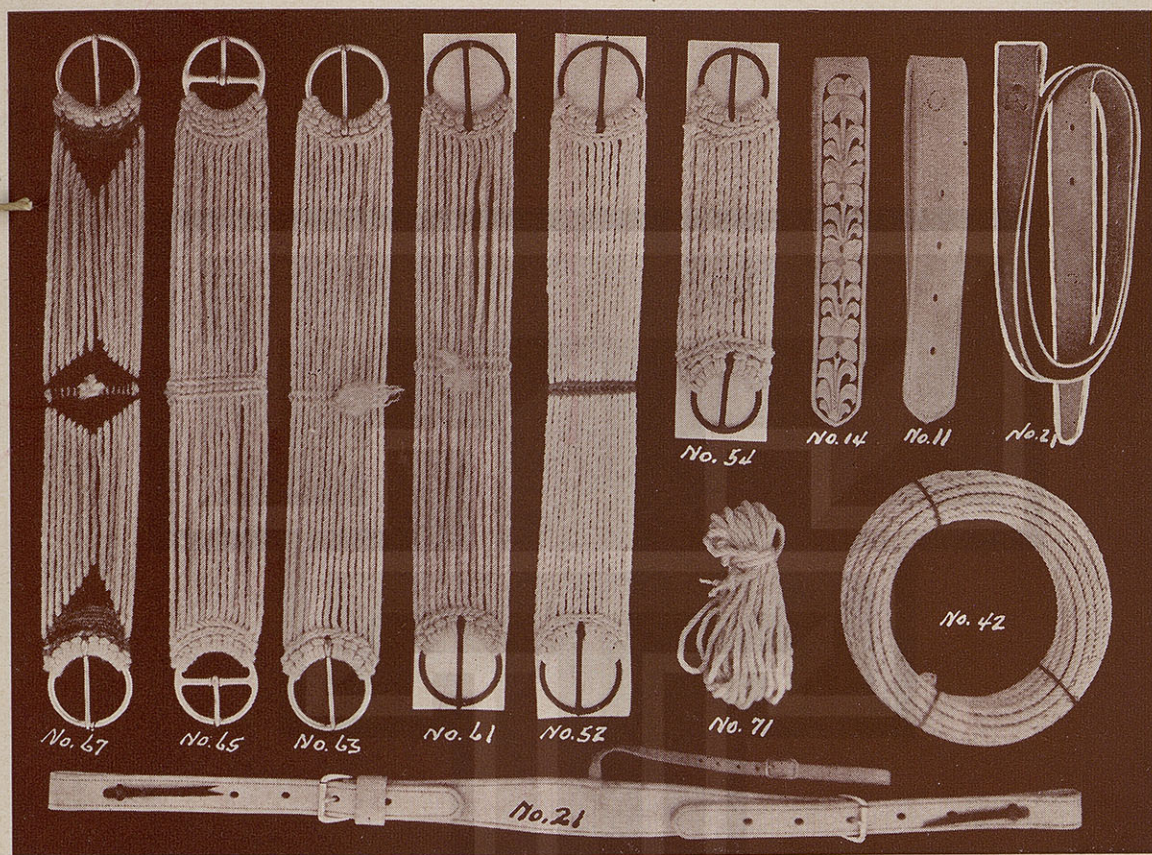
7 feet x 18 feet No. 8 Duck, 18 oz.....	\$27.50
---	---------



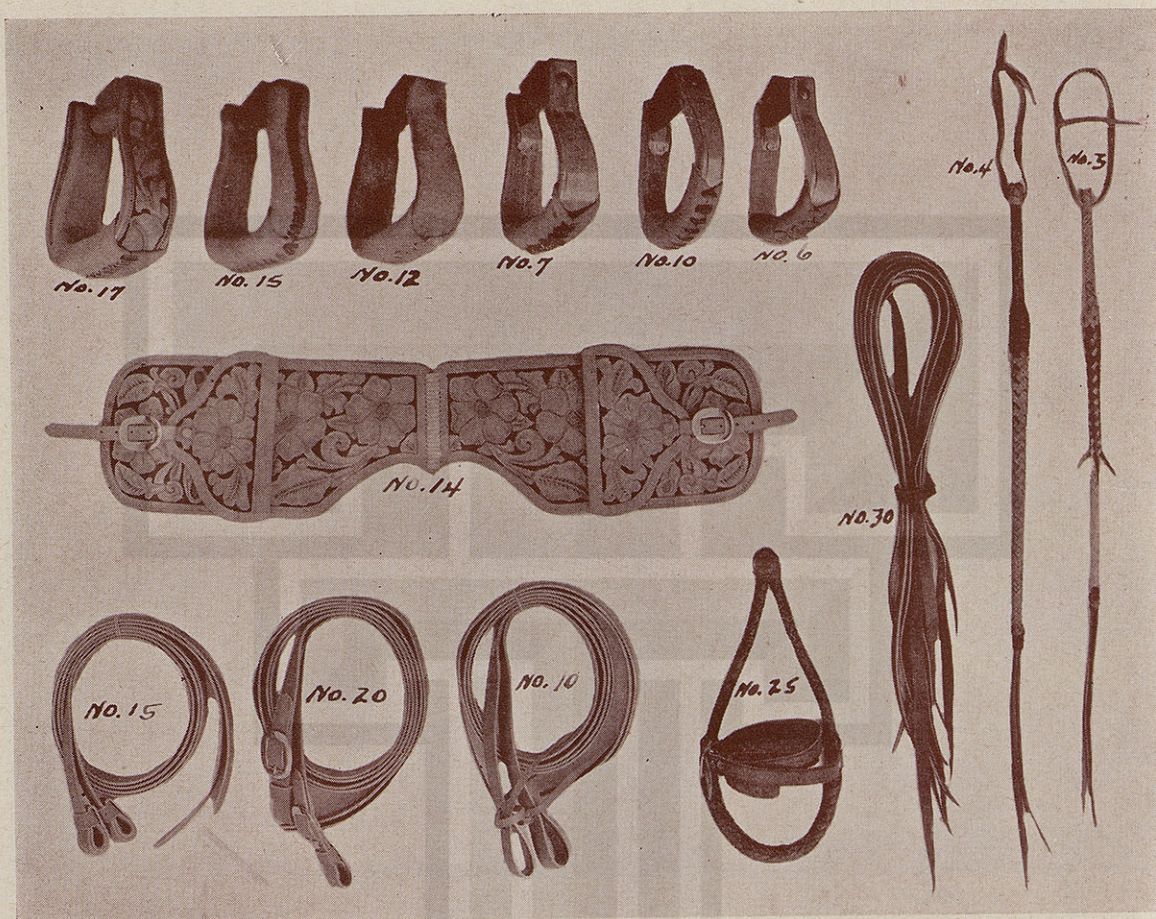
No. 40—Monkey Nose Taps, 20-inch, finely carved, less stirrups.....	\$30.00
No. 41—Not illustrated. Same as No. 40, solid stamped, " "	26.00
No. 42—Not illustrated. Same as No. 40, plain finish, " "	24.00
No. 50—Bull Moose Taps, 18-inch, finely carved, " "	25.00
No. 51—Not illustrated. Same as No. 50, solid stamped, " "	22.50
No. 52—Not illustrated. Same as No. 50, plain finish, " "	20.00
No. 45—Round Monkey Nose Taps, finely carved, " "	22.50
No. 46—Not illustrated. Same as No. 45, solid stamp, " "	20.00
No. 47—Not illustrated. Same as No. 45, plain finish, " "	18.00
No. 30—Round Nose Taps, finely carved, " "	20.00
No. 31—Not illustrated. Same as No. 30, plain finish, " "	15.00
No. 32—Round Nose Taps, Double Latigo, " "	12.50
No. 25—Dragoon Style, finely carved, " "	10.00
No. 26—Not illustrated. Same as No. 25, plain finish, " "	8.00
No. 20—Dragoon Style Taps, carved, boy's size, " "	8.00
No. 21—Not illustrated. Same as No. 20, plain finish, " "	6.00



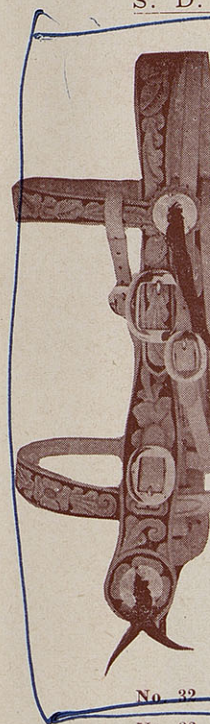
No. 67
No. 65
No. 63
No. 61
No. 52
No. 54
No. 71
No. 14
No. 16
No. 11
No. 11
No. 11
No. 11
No. 21
No. 21
No. 21
No. 21
No. 21
No. 42
No. 43



No. 67—Angora—Brass Rings—fancy colors—Shop made.....	\$5.00
No. 65—Angora—Cadmium Rings—Shop made.....	2.00
No. 63—Angora—Brass Rings—Shop made.....	3.00
No. 61—Angora—Jap Rings—Shop made.....	2.00
No. 52—Cotton—Jap Rings—Shop made.....	1.75
No. 54—Cotton—Jap Rings.....	1.25
No. 71—Angora Cord—Good Grade.....	1.25
No. 14—Short Latigo 2½"—finely carved.....	5.00
No. 16—Not illustrated—same as No. 14, plain.....	2.25
No. 11—Short Latigo 2¼"—Double Latigo.....	2.25
No. 11—Short Latigo 2"—Double Latigo.....	2.25
No. 11—Short Latigo 1¾"—Double Latigo.....	1.75
No. 11—Short Latigo 1½"—Double Latigo.....	1.50
No. 21—Long Latigo 2"—Lace Leather.....	2.50
No. 21—Long Latigo 1¾"—Latigo Leather.....	2.25
No. 21—Long Latigo 1½"—Latigo Leather.....	1.75
No. 21—Long Latigo 1¼"—Latigo Leather.....	1.50
No. 21—Frank Cinch 1¾"—Billetts.....	5.00
No. 21—Frank Cinch 1½"—Billetts.....	4.50
No. 42—Genuine Mexican Maguey Rope 40 ft.—Not available.....	
No. 43—Genuine Mexican Maguey Rope 40 ft.—Not available.....	

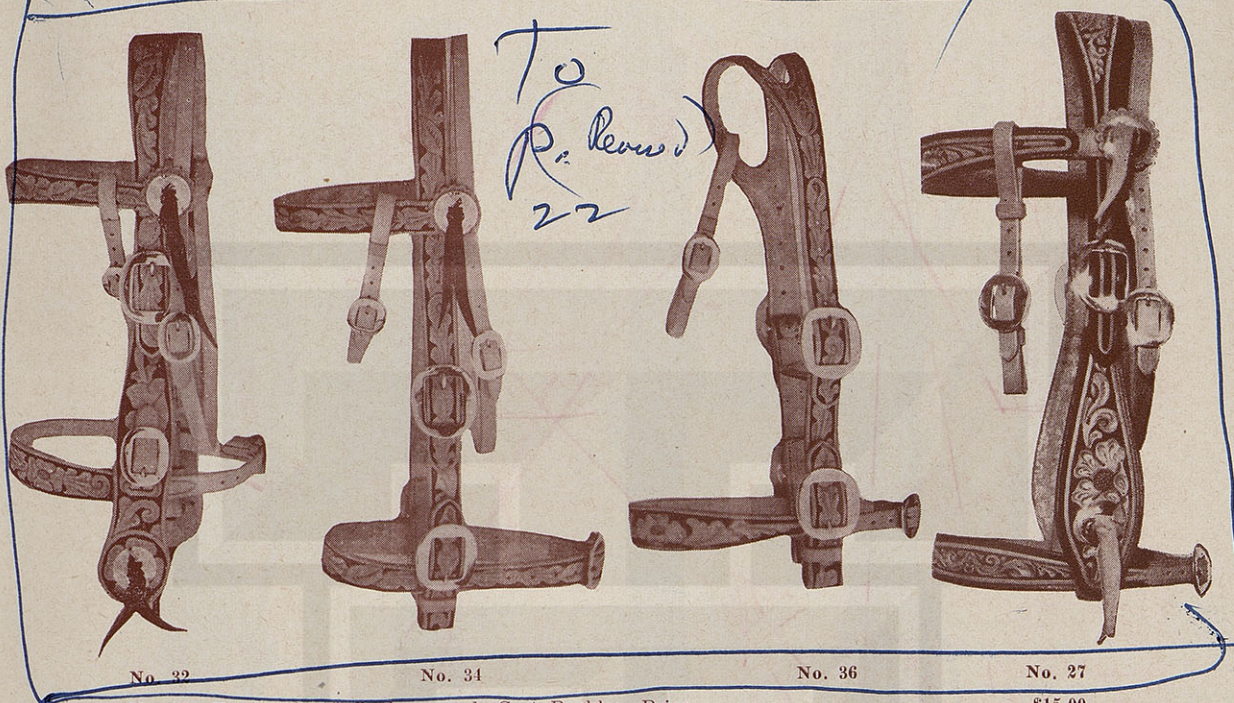


No. 17—Stirrups—full cover—carved—1½" to 3"	\$12.50
No. 15—Stirrups—full cover—Laced sides 1½" to 3"	9.00
No. 12—Stirrups—Rawhide bottoms 2" or 1½"—Not available	
No. 7—Stirrups—Brass bound—Leather bottoms 2" or 1½"	4.50
No. 10—Stirrups—Brass bound—Ox Bow-RODEO bottoms 1" or ¾"	4.00
No. 6—Stirrups—Brass bound—Boy Leather bottoms 1½"	3.50
No. 14—Pockets—full carved	17.50
No. 16—Pockets (Not illustrated)—Border Stamped	12.50
No. 17—Pockets (Not illustrated)—Plain	11.50
No. 4—Quirts—finely braided—heavy—Made by Cowboys	4.25
No. 3—Quirts—finely braided—medium—Made by Cowboys	3.50
No. 25—Hackamore Braided Nose Band—¾" Lace overhead	6.50
No. 30—Set Saddle Strings (8) ½" wide	3.50
No. 10—Bridle Reins—Latigo Leather to tie ½"	1.50
No. 10—Bridle Reins—Latigo Leather to tie ¾"	2.00
No. 10—Bridle Reins—Latigo Leather to tie ¾"	2.25
No. 10—Bridle Reins—Latigo Leather to tie ¾"	2.50
No. 10—Bridle Reins—Latigo Leather to tie 1"	3.00
No. 15—Bridle Reins—Loop ½"	2.50
No. 15—Bridle Reins—Loop ¾"	2.75
No. 15—Bridle Reins—Loop ¾"	3.00
No. 15—Bridle Reins—Loop ¾"	3.00
No. 15—Bridle Reins—Loop 1"	3.25
No. 20—Bridle Reins—Cart Buckle ¾"	3.50
No. 20—Bridle Reins—Cart Buckle 1"	3.75

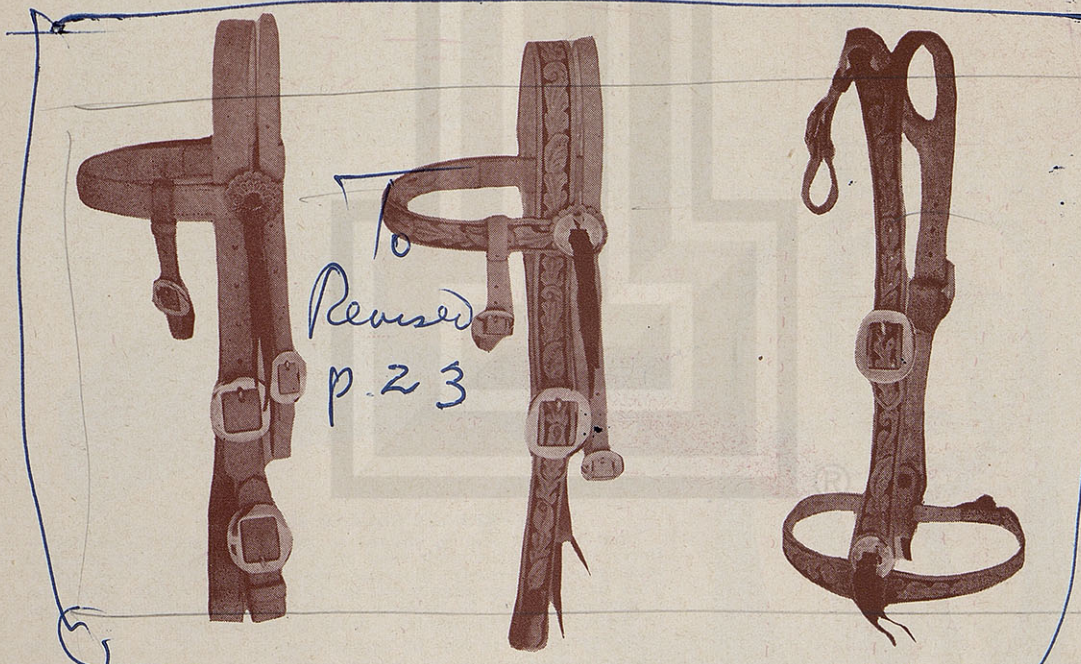


S. D. MYRES SADDLE CO.

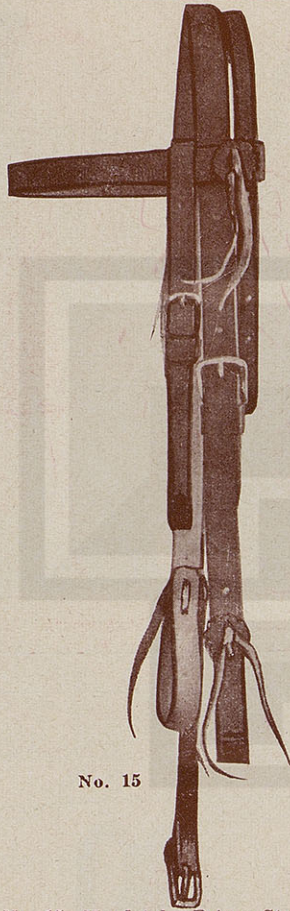
EL PASO, TEXAS



No. 32—Headstall—1"	finely carved, Cart Buckles. Price.....	\$15.00
No. 34—Headstall—1"	finely carved, Cart Buckles. Price.....	12.50
No. 36—Headstall—1"	finely carved, Cart Buckles. Price.....	11.50
No. 27—Headstall—1"	finely carved, Cart Buckles. Price.....	13.50



No. 38—Headstall—1"	wide, Cart Buckles. Price.....	\$ 6.50
No. 40—Headstall—1"	finely carved, Cart Buckles. Price.....	10.00
No. 30—Headstall—1"	finely carved, Cart Buckles. Price.....	10.00



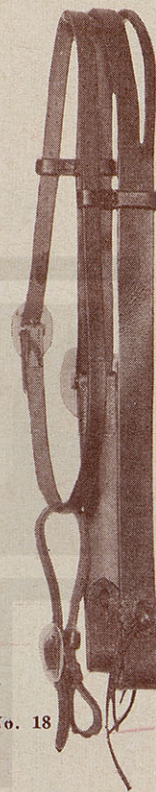
No. 15



No. 17

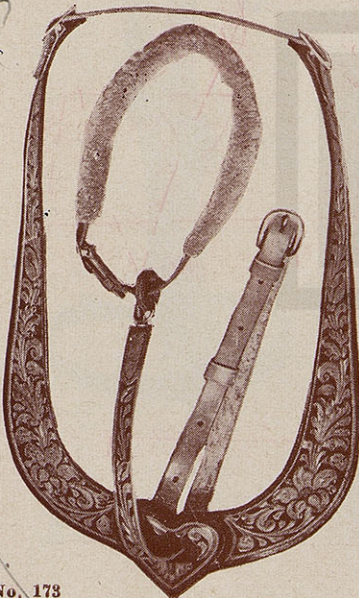


No. 16

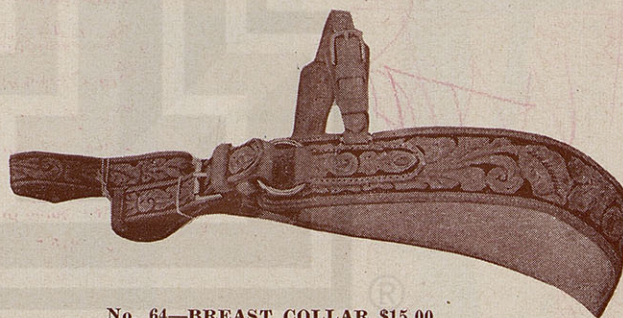


No. 18

- No. 15—Headstall—Prince Style, buckles on each side—1" wide. Price.....\$4.50
 No. 15-X—Headstall—Not illustrated, same as No. 15—1 1/4". Price.....5.00
 No. 17—One Ear Headstall—Adjustment one side—1 1/4". Price.....4.00
 No. 16—One Ear Headstall—Adjustment one side—7/8". Price.....3.50
 No. 18—Combination Headstall—One ear with throat latch—1 1/4". Price.....4.50



No. 173



No. 64—BREAST COLLAR \$15.00

This Breast Collar is shaped to fit to the horse's shoulders—finely carved, lined with wool skin. Neck piece 7/8" adjusted on each side. Extremely practical—easily adjusted to any cinch. This Breast Collar adds much to the looks of a riding outfit and is specially useful in holding a saddle in proper position either in roping or in hill country. Made in Russet.

No. 54—Same as No. 64 except plain.....\$10.00

No. 173—Breast Collar with nose band attachment, finely hand carved, of select material, made with either nose band or martingale effect.....\$17.50

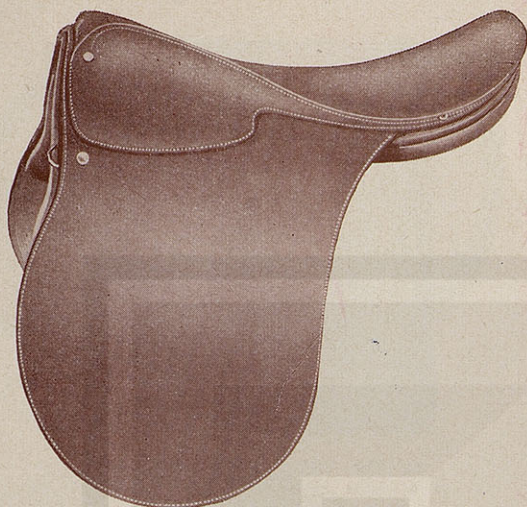
Breast Collar without the martingale or nose.....15.00

No. 174—Same as above, finished plain, with either martingale or nose band effect.....\$12.50

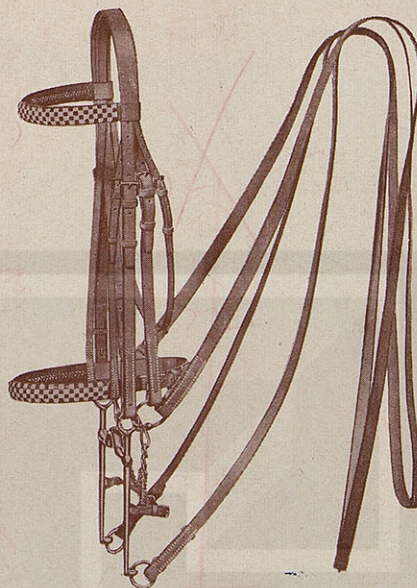
Breast Collar without nose band or martingale.....10.00

S. D. MYRES SADDLE CO.

EL PASO, TEXAS



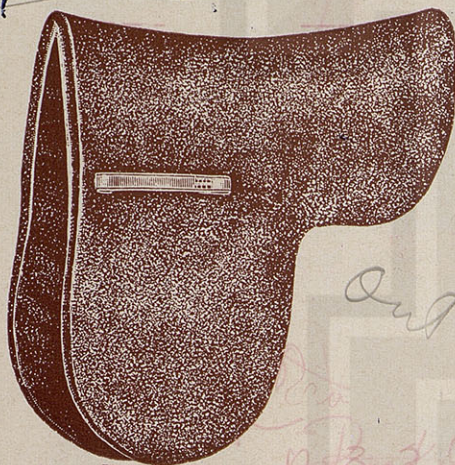
No. 408—ENGLISH STYLE SADDLE, for Park or Polo. Expertly fashioned by master craftsmen. Seat made of Pigskin, jockeys and skirts of pig impression. Price complete with non-rust stirrups \$120.00 plus post.



No. 1020—WITHERFREE SHOW SADDLE (Not illustrated), tree, 4" cut back, 20" seat, spring stirrup leather bars set back 4". Pigskin seat, jockeys and skirts pig impression.

Price \$168.25 plus post.

No. 1771—Show Bridle - Weymouth. 1/2" x 5/8". As Shown\$33.95 plus post.



No. 090—Saddle Numnah. One piece, fawn. Price \$5.95 plus post.

No. 1210—Utility Halter. Made of russet oak tanned leather, with brass fittings, adjustable chin strap.

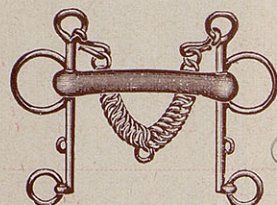
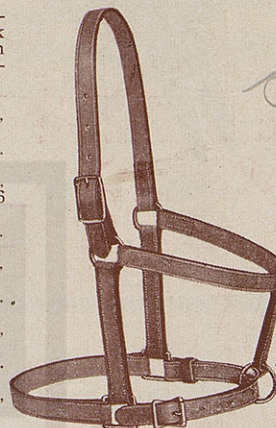
No. 1210-1—Size 3/4", to fit sucklings. Price \$5.00 plus post.

No. 1210-2—Size 3/4", to fit weanlings or 6 mos. Price \$5.00 plus post.

No. 1210-3—Size 7/8", to fit yearlings. Price \$5.75 plus post.

No. 1210-4—Size 1", to fit 2-year old. Price \$6.00 plus post.

No. 1210-5—Size 1", to fit full-size horses. Price \$6.00 plus post.



No. 3606—Flexible Rubber Mouth Bit, over welded chain \$6.95 plus post.



STAR BRAND

No. 3615—Curb Chain, with Hooks \$1.90 plus post.

an

20

TR bottom
P40 here

Keep
TR
To
Left
1st
p. 40

Out

Out

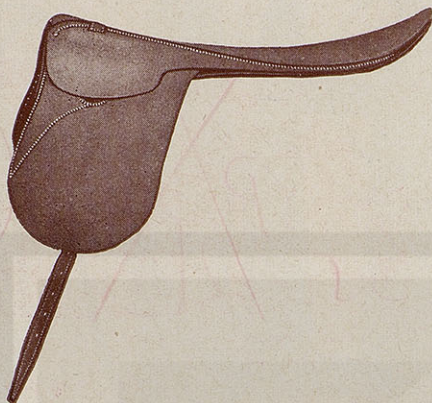
Out

TR - Bottom p 40 here

27

S. D. MYRES SADDLE CO.

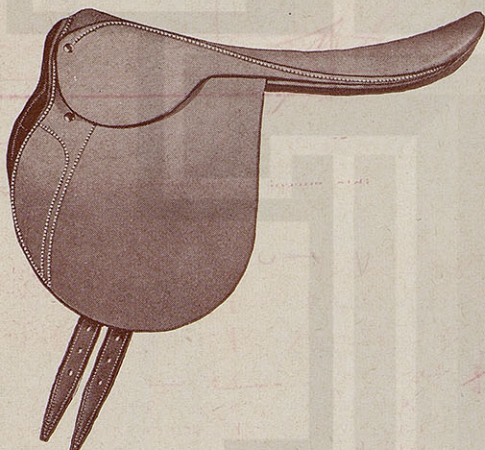
EL PASO, TEXAS



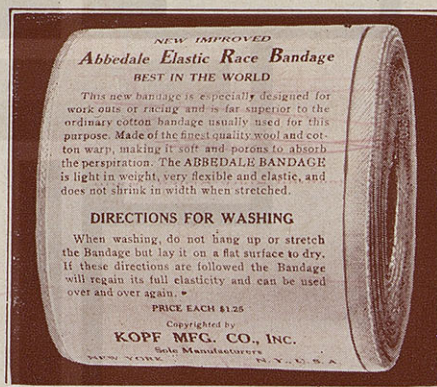
No. 1190 — Race Saddle. Made of the very best materials. Hand forged steel tree. Weight 2½ lbs. with fittings. Price \$125.00 plus post.



No. 101—Victory Racing Plates. Aluminum, with block heels. Four per set, in sizes 3 to 7 inclusive. Price per Set \$4.50 plus post.



No. 1165—Exercise Saddle. Pigskin seat and skirts. Weight 6 lbs. Price \$125.00 plus post.



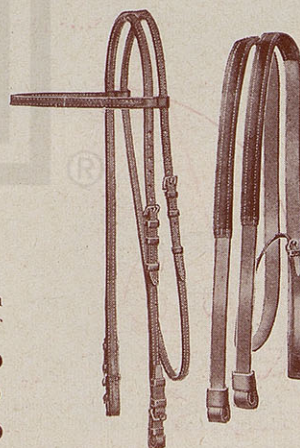
Abbedale Elastic Race Bandage. Light in weight, very flexible and elastic. 4" wide. 2¾ yards long, will stretch out to 5½ yards. Price ea. \$1.25 plus post.



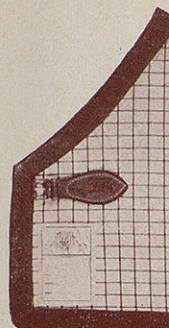
No. 1229—Feathered Race Bat. Solid rawhide centre, fine plaited calfskin cover, wide keeper. Price ea. \$8.00

No. 228—Race Bridle. Made of English Russet leather. Reins to loop with rubber grips. Price \$21.50

No. 235 — Race Reins (not illustrated) with rubber grips. Price \$12.50



S. D.



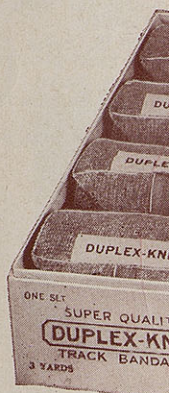
No. 21—Saddle. Tan body, red plaid extra long.



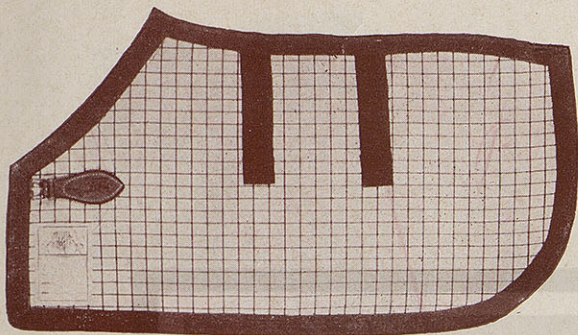
No. 218—Saddle. Very stiff flat face, fort grip stirrups.



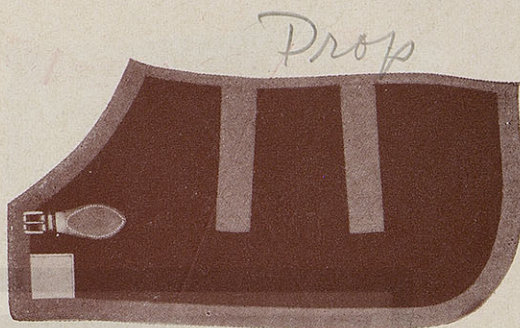
No. 239—Saddle. Very stiff skin. Made of an excellent skin.



28
29



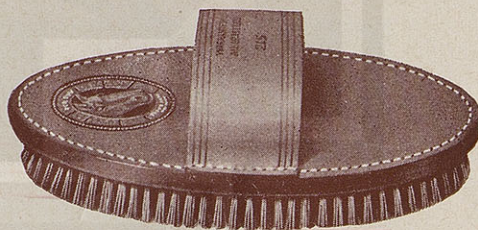
No. 216—Cotton Sheet. Extra strong, tan body and white mixture of green and red plaid, bound with green boot web and extra long surcingles. Sizes, 68, 72, 76.
Price \$7.50 plus post.



No. 235—Cotton Sheets, in green, wine, and red. 68 to 72.
Price \$8.75 plus post.



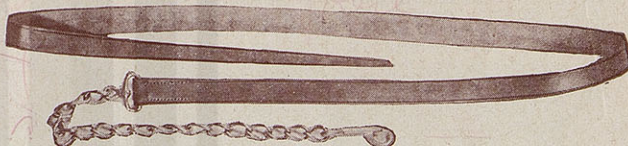
No. 218—Self-Cleaning Body Brush. Made of very stiff all black imported bristles, flat face, flexible sole leather back, comfort grip strap to fit the hand.
Price \$5.50 plus post.



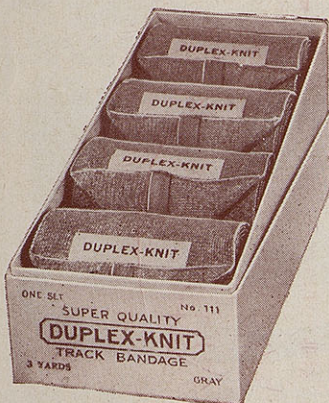
No. 215—Body Brush. Good quality imported all stiff grey bristles, flat face, flexible russet grain leather back and strap.
Price ea. \$3.75 plus post.



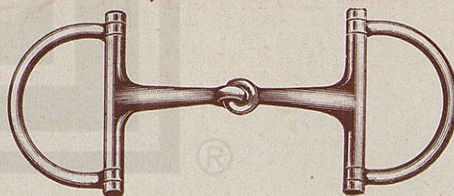
No. 239—Dandy Brush. Extra fine quality. Made of soft white tough fibres and is an excellent brush for horses with tender skin.
Price ea. \$1.75 plus post.



No. 242—Lead Strap. Made of good quality leather, with a strong swivel chain and snap.
Price ea. \$3.75 plus post.



No. 111-X — White Duplex-Knit Track Bandage. 3 yards long.
Price per set of Four \$2.50 plus post.



No. 3172—Race Bit. Star Steel Silver. 4 3/4" mouth, with 2 3/4" ring.
Price \$6.00 plus post.

29

Jo

S. D. MYRES SADDLE CO.

EL PASO, TEXAS

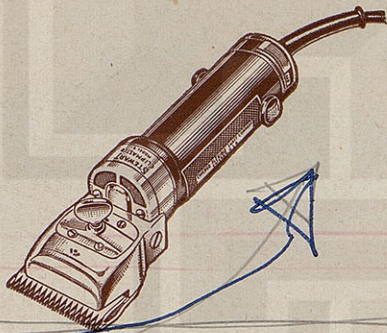
Drop
?



No. 027—Hinge Quarter Boot. Especially designed for five-gaited saddle horses. Made of Barktan boot leather, soft anti-chafe roll top to prevent chafing.
Price per Pair \$18.50 plus post.



No. 294—Perfection Elastic Ankle and Heel Boot. Made of extra strong elastic, padded to prevent injury to heel. This boot is flexible and does not bind. Will give with every movement of joints and support the ankles.
Price per Pair \$12.95 plus post.



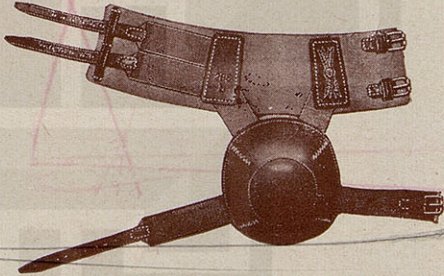
Stewart Clipmaster

Preferred clipper for powerful, silent, smooth-running speed, ease of handling and lasting durability. Cool running motor is self-contained inside of handle; convenient on and off switch; rugged plastic motor case. Complete with one set of 83-AU and 84-AU top and bottom blades. 110-120 volts for AC or DC.

Price \$32.75 plus post.

CLIPPING BLADES

No. 83-AU Top Blade.....\$1.45 plus post.
No. 84-AU Bottom Blade \$1.95 plus post.
These blades fit only No. 51 Clipmaster described above.



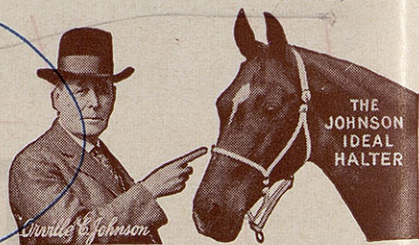
No. 285—Heel Boots. Made of fine calf skin. Heel cup well padded, brown elastic. A flexible light weight boot.
Price per Pair \$15.00 plus post.



HOT-SHOT Electric Stock Prods

Standard Model E-24—24" long - 5 batteries. The Standard Model meets the requirements of livestock truckers, meat packers, livestock handlers, veterinarians, and stockmen. Quickly loads or moves livestock harmlessly by means of an electric shock.

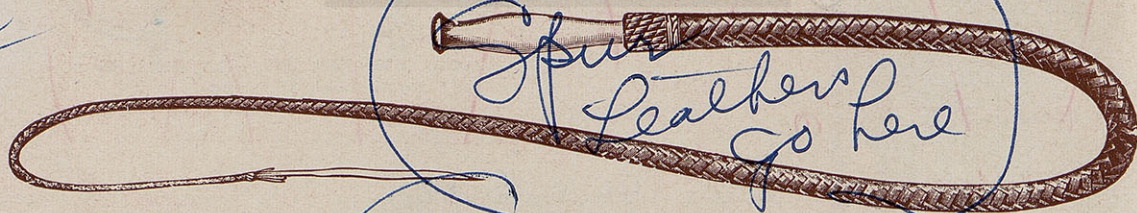
Heavy Duty Model HD-30 — 30" long with 8 batteries \$7.95 plus post.



Trade Mark Reg. U. S. Pat. Off.

JOHNSON IDEAL HALTERS are known throughout the horse world for their unusual strength and durability.

- No. 1-12 for 1100 to 1500 lb. horse Price \$1.85 plus post.
- No. 2-12 for 800 to 1100 lb. horse Price \$1.85 plus post.
- No. 3-12 for Colts or Calves Price \$1.70 plus post.



BULL WHIPS — BRAIDED

- 8 ft. Whip.....\$6.50 plus post.
- 10 ft. Whip.....\$7.50 plus post.
- 12 ft. Whip.....\$8.50 plus post.

TR - Top p. 45 here

S. D.

No. 161
less Steel
3/4" band
Price as

No. 161
on Stain
1 1/4" row
Price as

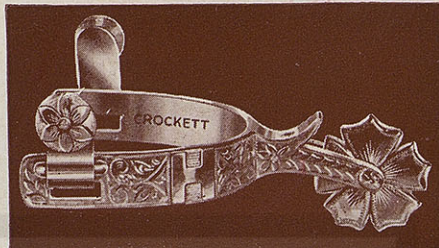
No. 42
spur for
shank, 1

No. 22
shank, w

30



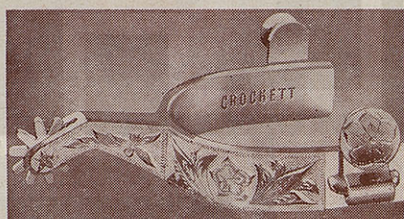
No. 1608—Women's or Boys' Spur. Stainless Steel, overlaid with Sterling Silver. $\frac{3}{4}$ " band, $1\frac{1}{4}$ " shank, $1\frac{1}{4}$ " rowel. Price as shown including Fed. Tax \$38.40



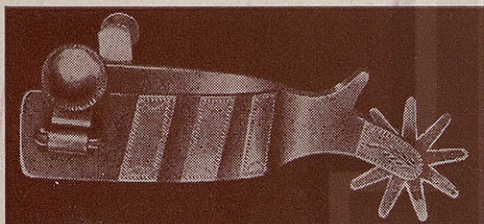
No. 1616—Stainless Steel with Sterling Silver overlaid. Any One Letter Engraved. $\frac{3}{4}$ " band, 2" shank, $1\frac{1}{4}$ " rowel. Price as shown, including Fed. Tax \$41.40



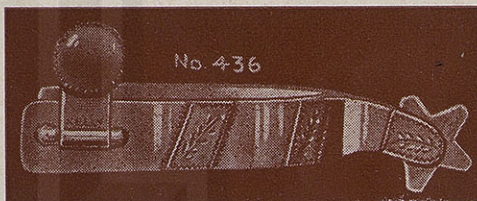
No. 1615—Spurs. Sterling Silver overlaid on Stainless Steel. 1" band, $1\frac{1}{4}$ " shank, $1\frac{1}{4}$ " rowel. Price as shown, including Fed. Tax \$43.20



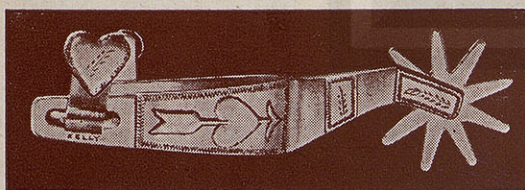
No. 1613—Spurs. Stainless Steel, with Sterling Silver overlaid. $\frac{7}{8}$ " band, 2" shank, 1" rowel. Price as shown including Fed. Tax \$43.20



No. 428—Johnnie Mullins Spurs. A top spur for many years. $1\frac{1}{8}$ " band, $2\frac{1}{4}$ " shank, $1\frac{3}{4}$ " rowel. Price \$11.50 plus post.



No. 436—Spur. $\frac{3}{4}$ " band, with short shank, and 1" rowel. Price \$9.00 plus post.



No. 222—Spur. $1\frac{1}{8}$ " tapered band, $2\frac{1}{2}$ " shank, with $2\frac{1}{4}$ " rowel. Price \$11.50 plus post.



No. 220—Spur. A favorite among cowmen for years. $1\frac{1}{8}$ " band, $2\frac{1}{2}$ " shank and a six-point $2\frac{1}{2}$ " rowel. Price \$11.50 plus post.

31

3

S. D. MYRES SADDLE CO.

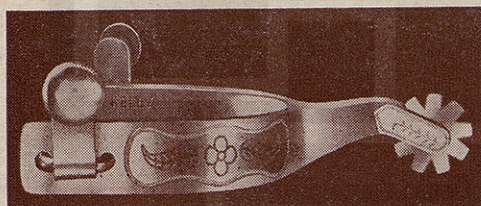
EL PASO, TEXAS



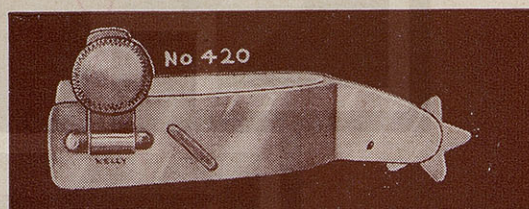
No. 408—Bronc Spur. $\frac{7}{8}$ " band, $1\frac{5}{8}$ " shank, $1\frac{1}{2}$ " five-point star rowel. Price \$9.00 plus post.



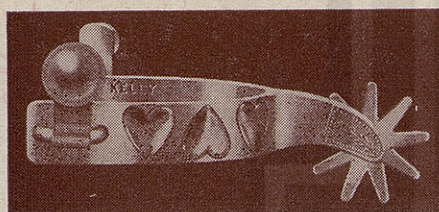
No. 424—Spurs. The American Eagle. 1" band, 2" shank with $1\frac{1}{2}$ " five-point star rowel. Price \$10.25 plus post.



No. 199—Toots Mansfield Roper. $\frac{7}{8}$ " band, 2" shank with 1" rowel. Price \$11.50 plus post.



No. 420—Bronc Spur. 1" band, $1\frac{1}{4}$ " shank with $1\frac{1}{4}$ " rowel. Price \$10.50 plus post.



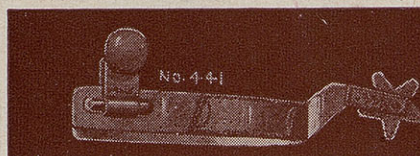
No. 70—Spurs. Made for either men or women. In ordering, please specify. $\frac{3}{4}$ " band, $1\frac{3}{4}$ " shank, $1\frac{3}{4}$ " rowel. Price \$9.75 plus post.



No. 440—Spurs for ladies or boys. $\frac{1}{2}$ " band, $1\frac{1}{4}$ " shank, with a five-point 1" rowel. Price \$8.25 plus post.



No. 438—Spurs. $\frac{5}{8}$ " band, $1\frac{1}{2}$ " shank, and a 20-point 1" rowel. For ladies or boys. Price \$8.25 plus post.



No. 441—Spurs. For ladies or boys. $\frac{1}{2}$ " band, $1\frac{1}{4}$ " shank, 1" star rowel. Price \$8.25 plus post.

S. D.



No. 35—Bit. H 5 1/2" with 8" shank. Price \$7.75 plus post.



No. 1068—Wagon bit with $\frac{3}{4}$ " shank, 8" shank, and 8" shank. Price \$9.50 plus post.



No. 1049—Stag Bit. $\frac{3}{8}$ " cheek, 8" shank. Price \$13.00 plus post.



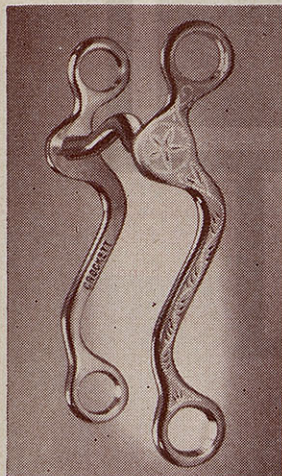
No. 35—Bit. Hand forged bit. Port $5\frac{1}{8}$ " with 8" shank. Nickel plated. Price \$7.75 plus post.



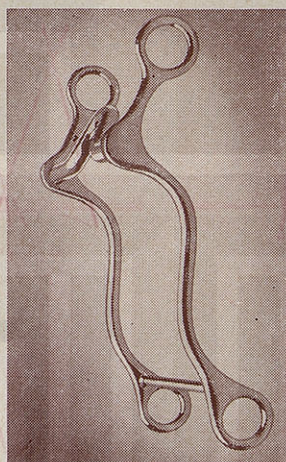
No. 47—Bit. Hand forged steel bit with nickel finish. $5\frac{1}{8}$ " port, shank $6\frac{1}{2}$ " over all. Price \$5.50 plus post.



No. 39—Hand forged from tough steel. Shanks 8" with $5\frac{1}{8}$ " port. Price as shown \$7.75 plus post.



No. 1068—Walking horse aluminum bit with $8\frac{1}{4}$ " cheeks. E1068 Engraved \$9.50 post. P1068 Plain \$8.50 post.



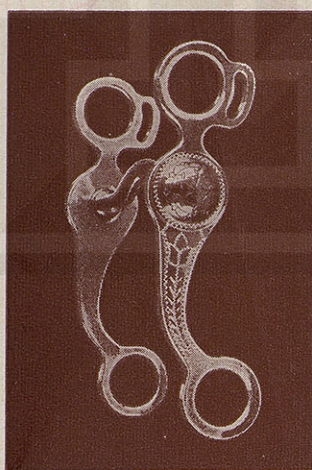
No. 1263—Plain bit with 9" cheeks. \$9.35 plus post.



No. 1073—Hand made special round cheek roping bit. 9" cheek. Price Engraved \$10.00 plus post. Price Plain \$9.00 plus post.



No. 1049—Stainless Steel Spade Bit. $8\frac{3}{8}$ " cheeks. Price engraved \$13.00 plus post. Price plain \$11.00 plus post.

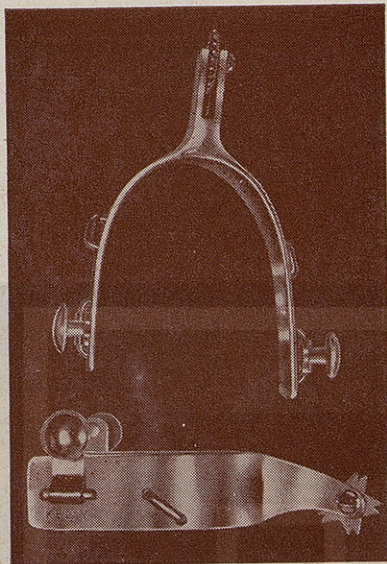


No. 85—Bit. $7\frac{3}{4}$ " cheeks, with loops for curb strap. Price \$7.50 plus post.

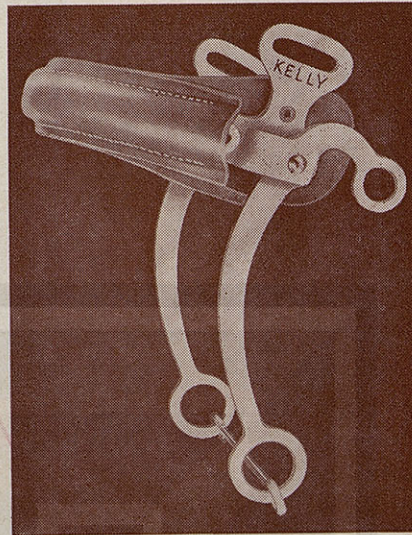


No. 1624—Stainless Steel, with pure white Sterling Silver over laid. $7\frac{3}{4}$ " cheeks. Price including Fed. Tax \$28.80

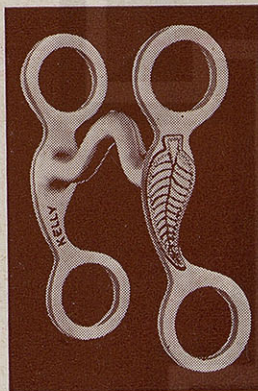
33



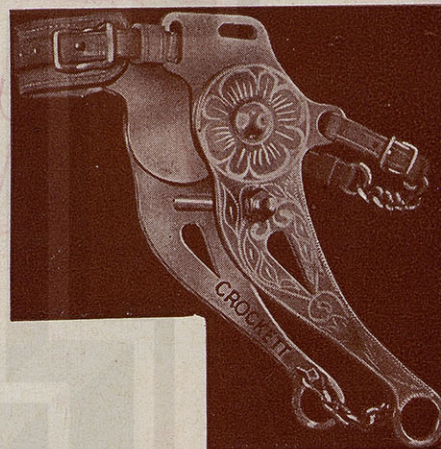
No. 422—"Jerry Ambler" Bronc Spurs. Turned-in 1 3/4" shanks. Two sets rowels - One set 1" twenty-point saw-tooth, the other set 1" notched star.
Price \$11.75 plus post.



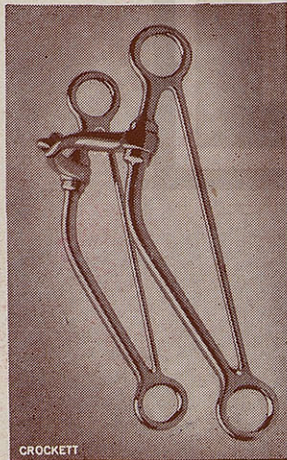
No. 1003—Hackamore Bit. The headstall pieces pivot to prevent headstall slipping forward when pressure is applied to reins.
Price \$9.50 plus post.



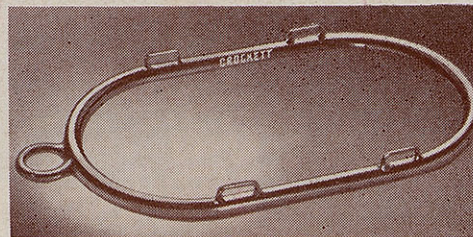
No. 21—Bit. Overall length is only 4 7/8". Port 5 1/8". Price \$5.25 plus post.



No. 1013—Hackamore Bit. The port bar is removable. 9 1/4" cheeks.
Price Engraved\$9.00 plus post.
Price Plain 7.50 plus post.



No. 1248—Hand Forged Steel Snaffle.
Price \$9.35 plus post.



No. P-1250—Halter Band. 8 1/2" or 9 3/4" size. Specify Size. Price \$4.95 plus post.



No. 4

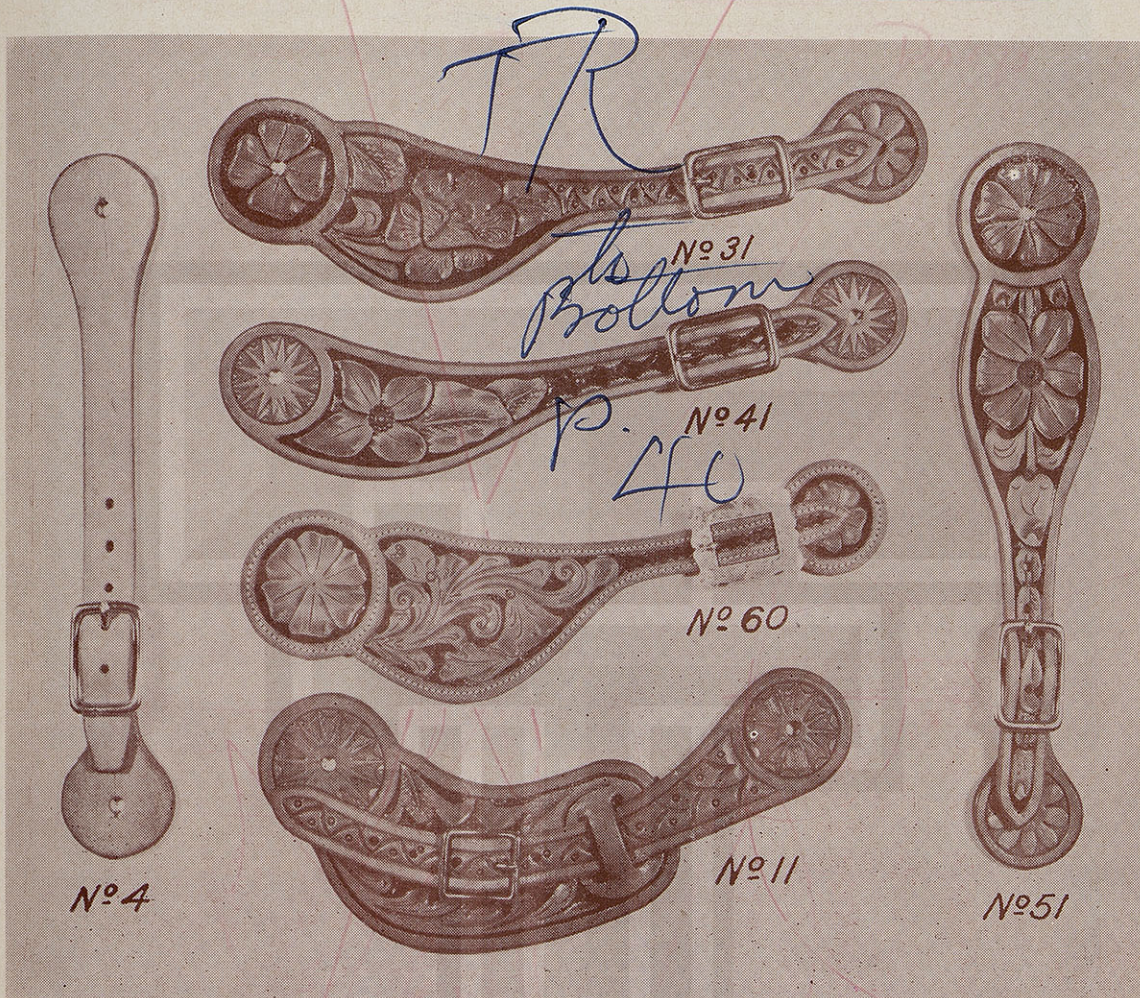
No. 4—Spur
No. 31—Spur
No. 41—Spur
No. 51—Spur



No. 1 carved.

S. D. MYRES SADDLE CO.

EL PASO, TEXAS



No. 4—Spur Leathers	\$1.00
No. 31—Spur Leathers	2.50
No. 41—Spur Leathers	2.25
No. 51—Spur Leathers	2.50

No. 11—Spur Leathers	3.50
No. 60—Spur Leathers. Made of calf skin, lined, and finely carved. $\frac{5}{8}$ " Sterling Silver buckle. Price including tax.....	\$15.80



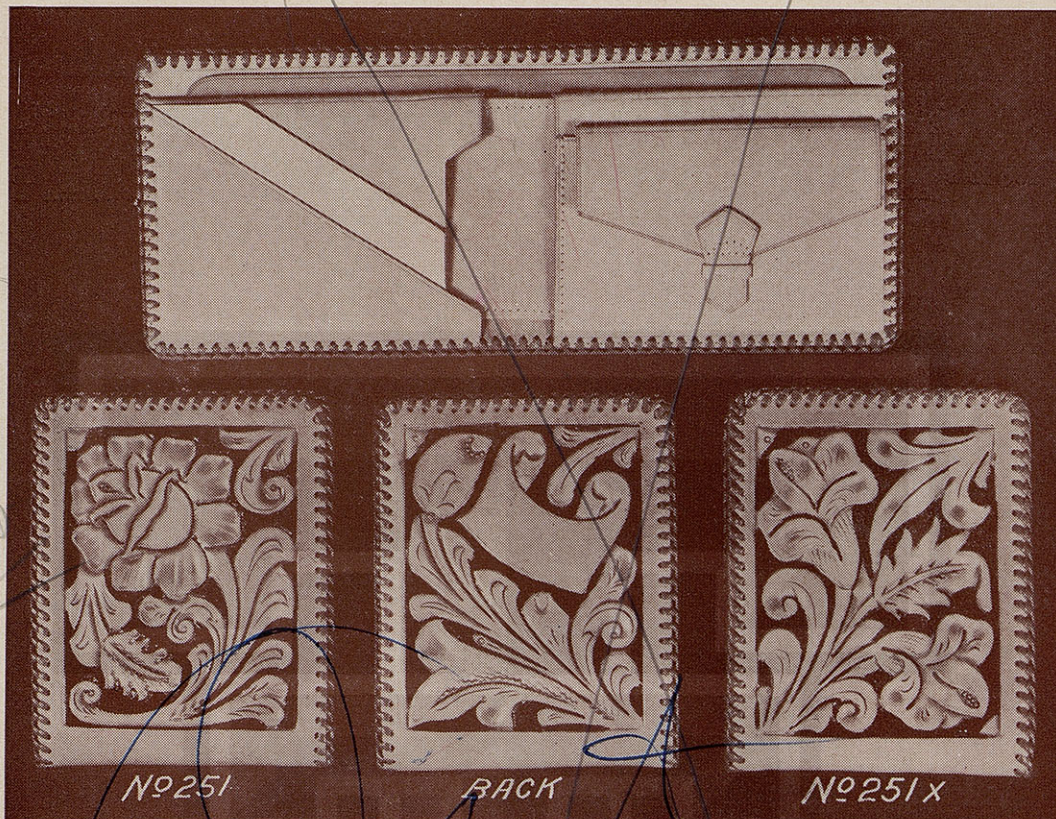
No. 14—Saddle Rifle Scabbard. Finely hand carved. Leather edged lace.
Price \$22.00 plus post.

No. 11—Saddle Rifle Scabbard. Plain finish.
Price \$11.50 plus post.

Write Box here

S. D. MYRES SADDLE CO.

EL PASO, TEXAS



No. 251—Billfold. Artistically hand carved of fine calf skin. Edge laced. Space reserved on reverse side for initials.
Price\$10.00 Federal Tax 2.00

No. 251-X—Billfold. Same as No. 251, except different design. Same Price.



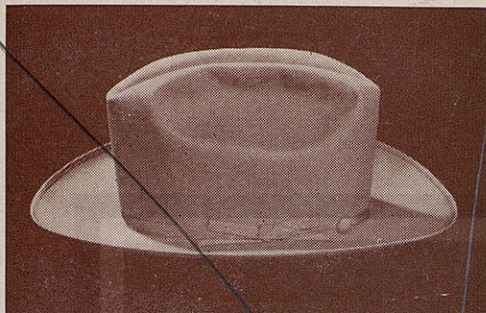
No. 255—Picture Album, or Scrap Book. Artistically designed and hand carved. The reverse side has a diamond checked design. Your name, initials or Ranch Brand can be carved into the leather as shown. The size as illustrated is 10½" x 13½". Price \$35.00



No. 265—Picture Album, or Scrap Book. Very beautifully hand carved. This also has a diamond checked design on the reverse side. The size is the same as No. 255. Price \$27.50 We can make any size book which you might want. Price on application.

S. D. MYRES SADDLE CO.

EL PASO, TEXAS



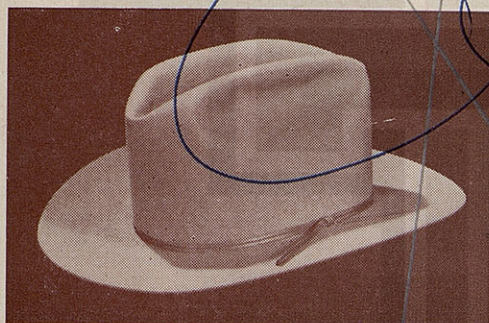
No. 725—The Open Road. Made of Clear Beaver 7x quality. Leisure weight. One of Stetson's finest hats. The brim is 2 7/8" and can be worn as shown or with the brim snapped.

Price \$50.00



No. 730—The Lindseton. Made of Stetson's finest Clear Beaver 7x quality, 3" brim, 2-cord band.

Price \$50.00



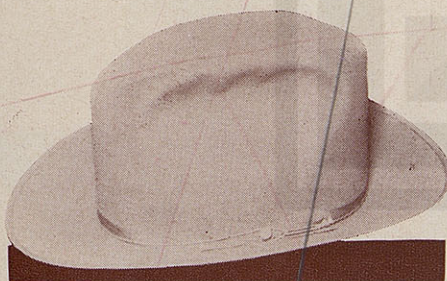
No. 331—Laloo Jr. 3x Beaver quality, full weight with 3" brim, one-cord band. Silver Belly color.

Price \$18.00



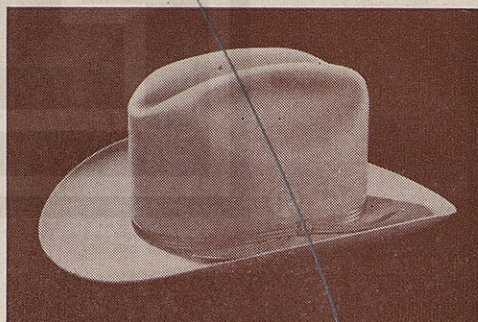
No. 250—The Stetson "Twenty-Five". A popular hat for dress, casual wear or work. Light Weight, 2 7/8" brim.

Price \$25.00



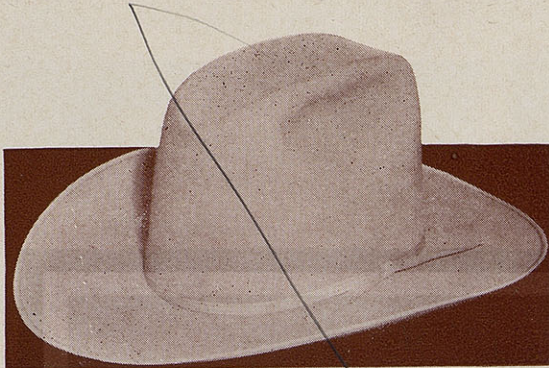
No. 335—3x Beaver, Open Road. Truly, this is one of Stetson's great hats. Light Weight, Snappy, and Smart. 2 7/8" brim.

Price \$15.00



No. 337—"The Crockett". The natural, slightly rolled 3" brim, makes the "Crockett" a most distinctive creation. Made of 3x Beaver quality with a 3-cord band.

Price \$18.00



No. 120—"The San Fran". The "San Fran" is one of the most popular hats in the Southwest, and due to its popularity it is made in several colors. Made of 3x Beaver quality, 6¼" crown, with a 3½" brim. Colors: Silver Belly, Sky Grey, Wine, Emerald, and White.

Price \$20.00

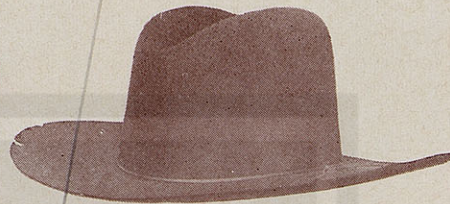
No. 121—Same as described above, only with a 4" brim - Colors: Wine, Emerald, Sky Grey, Silver Belly, and White.

Price \$22.00



No. 165—San Fran in Seal Color with 6¼" crown and 3½" brim. 3x Beaver quality.

Price \$20.00



No. 370—"Laloo". The "Laloo" has been a leader among cattlemen from here on back. Made of 3x Beaver quality with 3½" brim. Silver Belly color.

Price \$20.00



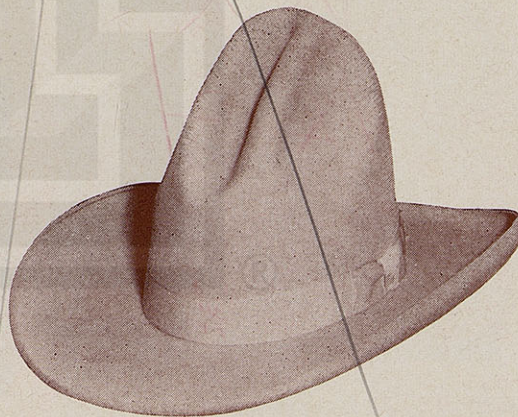
No. 166—Black San Fran, made of 3x Beaver quality, 6¼" crown with a 3½" brim. A great Southwestern hat.

Price \$20.00



No. 80—The Texan. Made of Royal Deluxe quality. A 5½" crown with 2¾" brim. B. Belly Color. Bound Edge.

Price \$12.50



No. 100—The Tom Mix. Yes, this is the biggest hat which is made by Stetson. It has a 7½" crown with a 5" brim. 3x Beaver quality.

Price \$35.00

KAS

as been
ere on
th 3½"
e \$20.00

f 3x
3½"
20.00

he
It
av-
.00

S. D. MYRES SADDLE CO.

EL PASO, TEXAS



No. 1042—Ranch Style Suit. 100% wool.
Elastic Material. Zipper Jacket with Ranchers
Pants. Sizes 36 to 46. Fawn Color.
Price \$44.50

No. 9583—Ranchers 100% wool, 16 oz. Gab-
ardine, in fawn color. Slash Pockets, Button
Coat. Sizes 36 - 44. Fawn Color.
Price \$55.00

out

S. D. MYRES SADDLE CO.

EL PASO, TEXAS

S. D.



"The Gamblers"

The Gambler Stripe Suits are authentically Western in every respect. Their popularity is widespread—on the Campus—the Track—the Rodeo.

For Men—Sizes 36 to 44	Price \$44.50
Ladies—Sizes 12 to 16	Price 37.50
Extra Pants for Men	Price 20.00
Extra Pants for Ladies	Price 18.50

H
Leather
M
La



"The Ranchers"

Here is something different in ranch style clothing. Full length, form-fitting coats — Leather Buttons — Patch Pockets — Made of 100% wool, 16 oz. Gabardine in fawn color.

Men—Sizes 38 to 44Price \$74.95

Ladies—Sizes 12 to 16Price 69.95



No. 925 — 3-Piece Western Suit. Jacket, Pants, and Skirt! Made of fine Gabardine, 100% wool. Fashioned by Taylor-Berke — The Jacket has 3 half moon pockets — the pants and skirt also have the half moon pockets—Ranch style belt loops. Sizes 12 to 16.
Price \$79.50

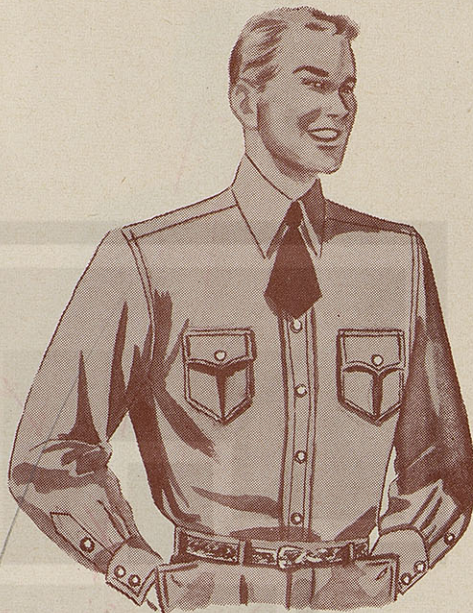
"The Vaquero"

No. 65—The Vaquero was also fashioned by Taylor-Berke. Made of fine all wool suiting material in a small herringbone design. Form fitting jacket — Slash Pockets — to button. Sizes 12 to 16.
Price \$60.00



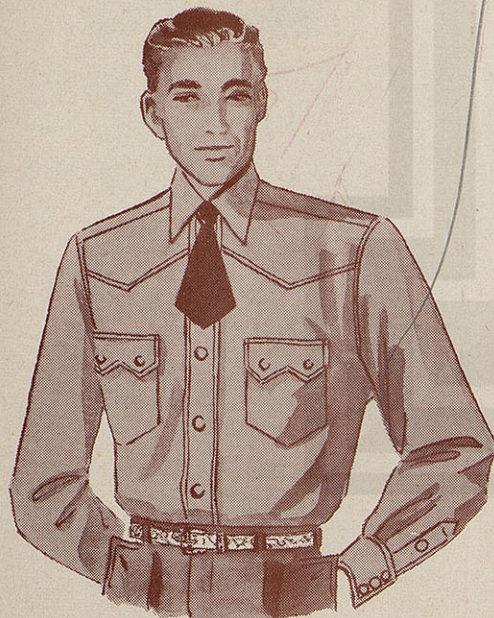
No. 790—A fine Western shirt, expertly tailored. Pearl snap buttons as shown. Made of 40% wool, 60% rayon — Broad $\frac{3}{4}$ " stripes. Colors—Maroon, Tan, Grey and Black.

Price \$14.95



No. 2185—Fine luxurious, Western shirt, 100% wool Gabardine. Shoulders and neck lined with Rayon. Single needle stitched. Colors, Tan, Blue, and Grey.

Price \$25.00



No. 9505 — White Broadcloth, of lustrous, high count sanforized fabric. Pearl snap fasteners—Tailored Collar—Form-fitting. Sizes 14 to 17.

Price 6.95



No. 95 — Western, form fitting, washable cotton. Pearl snap fasteners, two-point pockets, tapered sleeves. Colors in Strips, Red, Green, Blue, and Tan. Men Sizes 14 to 17. Ladies Sizes 12 to 16.

Price \$8.50



No. 160—The Del Reno Shirt. This is a very fine shirt for Rodeos or sports wear. Made of 23% wool and 77% rayon. It has a grey body with Gambler Stripe shoulders and cuffs which match the Gambler Stripe Suits shown on Page 50.

Sizes for Women, 12 to 16

Price \$18.95

Sizes for Men, 14 to 17

Price \$18.95



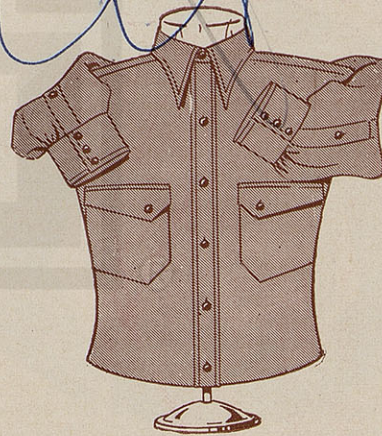
No. 1000—Cowboy Suit for Boys or Girls. Made of 23% wool and 77% rayon gabardine. Color combinations are Black and Grey - Tan and Brown - Blue and Light Blue - Green and Light Green - Grey and Maroon - Ages 2 to 12.

Price per Suit \$16.25



No. 3921—Western Roper Shirt, made of Blue and Gray Chambray - Sanforized - cut to fit your body - Laundry-Proof snap fasteners. Neck Sizes 14 to 17.

Price \$3.95



No. 6980—Shirt. Made of 100% all wool Gabardine. Fine tailoring, 3-button cuff, Diagonal flaps on pockets, pointed collar. Colors are Wine - Tan - Blue - Grey - Green. Sizes 14 to 17.

Price \$14.50



No. 506—Levi's Short Jumper. Men's Sizes from 34 to 44.

Plus Postage

Price \$3.70

No. 506-B—Levi's Short Jumpers. Sizes 26 to 32.

Plus Postage

Price \$3.35



No. 7299—Levi Denim Shirt - Sanforized - White Pearl Snap Fasteners - Form Fitting.

Plus Postage

Price \$6.95

NEW PATENTED
LEVI'S with non-scratch
CONCEALED RIVET
on back pockets



LEVI'S—America's Finest Overall Since 1850.

They Fit Better and Last Longer.

No. 501—Levi's - 30 to 42 Waist; Length 30 to 36. Price per Pair.....\$3.45
For Extra 38 Lengths.....\$3.75

No. 503—Levi's - 27 to 29 Waist; 26 to 36 Lengths\$3.25

Plus Postage



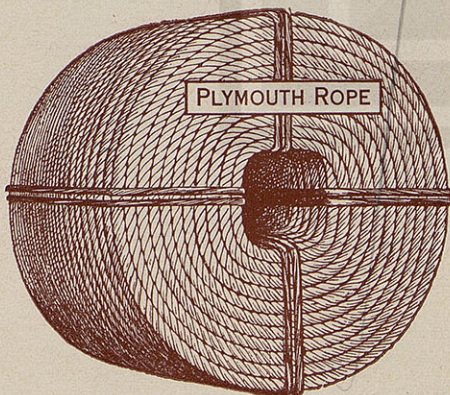
No. 701—Levi's Denim riding pants for Ladies. Especially tailored to fit and look neat and trim. Preshrunk. Price \$3.95.
Plus Postage

No. 702—Jacket to match. Price \$4.75
Plus Postage



No. 900—Tex 'N' Jeans. These Sanforized Denim pants are made by Mann Ranch. Trim snug fit like range-workin cowboys wear. Reinforced-riveted. Sturdy cloth that gives extra long wear. Sizes 1 to 6 \$1.98. Sizes 6 to 16 \$2.10.
Plus Postage

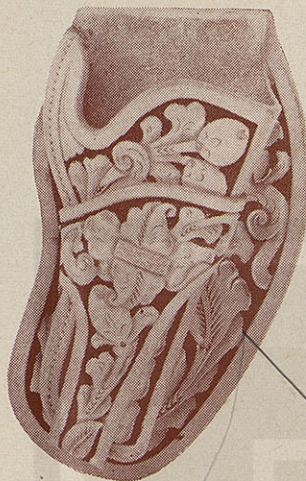
No. 901—Tex 'N' Jean Jacket to Match. Price 1 to 6 \$1.80. 6 to 16 \$1.98.
Plus Postage



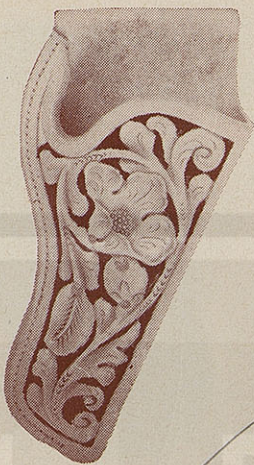
Plymouth Famous Silk Manila Rope. 30 thread Price 13 cents per foot. 33 thread Price 15 cents per foot. 36 thread Price 15 cents per foot. 42 thread Price 17 cents per foot.
Plus Postage

No. 999
Price.....
No. 988
Price.....
No. 777
Price.....
No. 970
Price.....

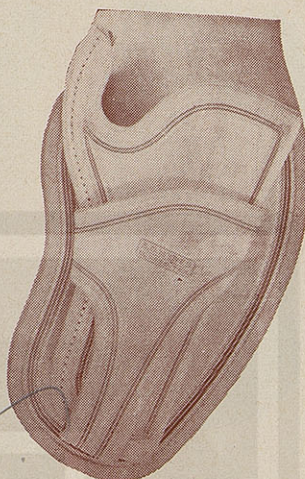
No. 998
carv
Price.....
No. 987
Price.....
No. 967
Price.....
No. 957
Price.....

HOLSTERS FOR REVOLVERS

No. 999



No. 988



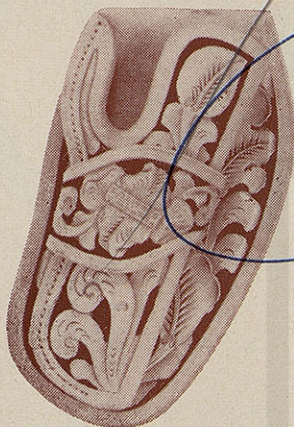
No. 777

No. 999—Ranger style—for wide belt—quick draw effect, lock stitched, finely carved.
 Price.....\$7.50 — Postage.....25c

No. 988—Belt Scabbard—quick draw effect—lock stitched, hand carved.
 Price.....\$4.75 — Postage.....25c

No. 777—Ranger style—for wide belt—quick draw effect, lock stitched, plain finish.
 Price.....\$5.40 — Postage.....25c

No. 970—(Not illustrated) same style as number 988—plain finish.
 Price.....\$3.40 — Postage.....25c

HOLSTERS FOR AUTOMATIC PISTOLS

No. 998



No. 987



No. 967

No. 998—Ranger style Automatic Holster—for wide belt—quick draw effect, lock stitched, finely carved.
 Price.....\$7.50 — Postage.....25c

No. 987—Automatic Holster, quick draw effect, lock stitched, finely carved.
 Price.....\$4.75 — Postage.....25c

No. 967—Automatic Holster—quick draw effect, lock stitched, basket stamped.
 Price.....\$4.25 — Postage.....25c

No. 957—(Not illustrated) Automatic Holster—quick draw effect, lock stitched, plain finish.
 Price.....\$3.40 — Postage.....25c



No. 502



No. 402



No. 814

No. 502—Holster, finely carved with two pieces Mexican silver money—lined.
Price.....\$13.50 — Postage.....25c

No. 402—Holster, finely carved with three pieces Mexican silver money—lined.
Price.....\$20.25 — Postage.....25c

No. 814—Tom Threepersons Style, with extended hammer cover to protect clothing—full carved.
Trigger set high for quick draw.
Price.....\$5.00 — Postage.....25c

No. 810—Tom Threepersons Style, not illustrated, with extended hammer cover to protect clothing—plain finish.
Price.....\$3.75 — Postage.....25c



No. 711



No. 701

BARTON'S SPECIAL HOLSTER

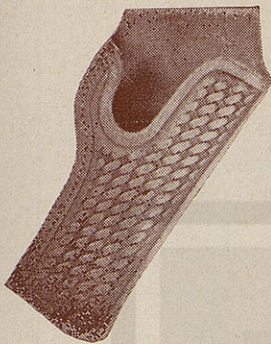
The reverse flap is so constructed that it holds the holster in any easy drawing position. This is a unique holster—can be carried in any position on the belt (front or rear) in your hip pocket, inside coat pocket, or any other place where convenient for the back flap to slip into.

No. 711—Barton's Special Holster, finely carved for Automatic—any size.
Price.....\$6.75 — Postage.....25c

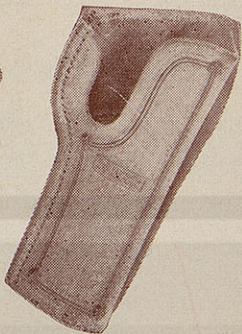
No. 712—Barton's Special Holster, not illustrated, plain finish for any size Automatic.
Price.....\$5.00 — Postage.....25c

No. 701—Barton's Special Holster, finely carved, made to fit any size revolver up to 6-inch.
Price.....\$6.75 — Postage.....25c

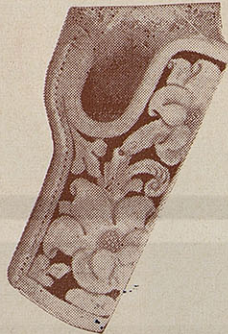
No. 703—Barton's Special Holster, not illustrated, plain finish, made to fit any revolver up to 6-inch.
Price.....\$5.00 — Postage.....25c

HOLSTERS FOR AUTOMATIC PISTOLS

No. 515



No. 511



No. 507



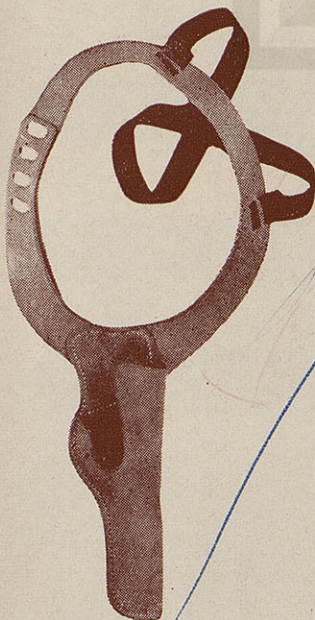
No. 501

No. 515—Ranger style, Automatic, quick draw effect, lock stitched, basket style.
Price.....\$4.00 — Postage.....25c

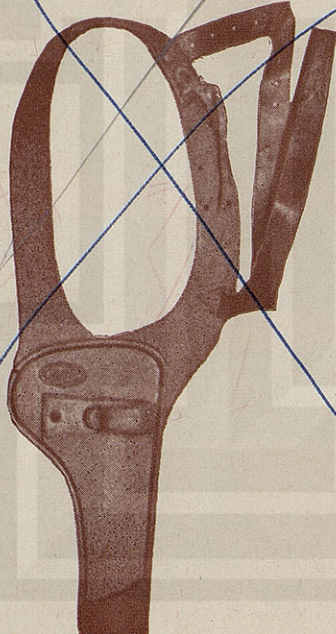
No. 511—Ranger style, Automatic, quick draw effect, lock stitched, plain finish
Price.....\$3.40 — Postage.....25c

No. 507—Ranger style, Automatic, quick draw effect, lock stitched, finely carved.
Price.....\$4.75 — Postage.....25c

No. 501—Ranger style, Automatic, quick draw effect, finely carved, edge laced, lined with calf.
Price.....\$10.00 — Postage.....25c

**Tom Threepersons Style
SHOULDER HOLSTER**

No. 12



No. 10



No. 17

No. 12—Tom Threepersons style of shoulder holster, made of select russet stock, finely carved, with best tempered steel spring.
Price.....\$10.00 — Postage.....25c

No. 11—(Not illustrated) same as No. 12, except plain finish.
Price.....\$8.00 — Postage.....25c

No. 10—Shoulder Holster made of russet leather with best tempered steel springs.
Price.....\$6.00 — Postage.....35c

No. 17—Shoulder Holster, made of light select russet leather, designed for automatic or small pistol.
Price.....\$5.40 — Postage.....25c



No. 545—HOLSTER — Especially designed, Mexican edge laced and lined with soft suede leather. Can be made for any style pistol, also, when wanted for the Buscadero belt the same especially made to drop low on the belt such as shown on the following page.

This is one of the most beautiful products in holster making and the carving will be made in keeping with belt selected. **PRICE \$25.00**



- | | |
|---|--------|
| No. 9—Belt 1 $\frac{1}{8}$ " to 1 $\frac{1}{2}$ " tapered to fit buckle set—hand carved..... | \$5.00 |
| No. 10—Belt 1 $\frac{1}{4}$ " to 1 $\frac{1}{2}$ " tapered to fit buckle set—hand carved..... | 6.25 |
| No. 11—Belt 1 $\frac{1}{4}$ " to 1 $\frac{1}{2}$ " tapered to fit buckle set—hand carved..... | 8.00 |

These belts are all hand carved and are made especially to fit buckle sets as listed on page 27.

Plus 35c Postage

**DONT WORRY AND YOU WILL LIVE LONG
AND BE HAPPY.**

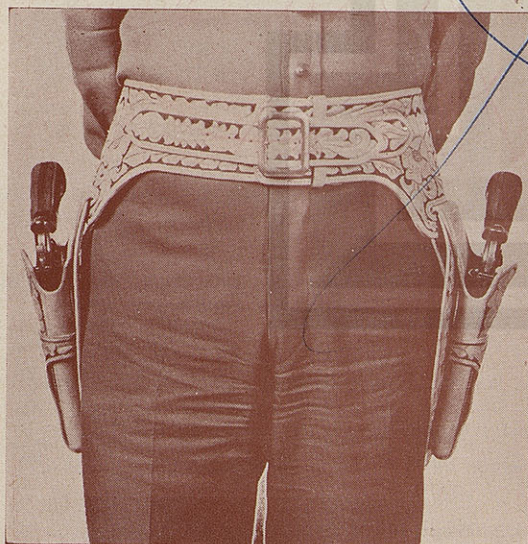
—Tio Sam.

"Buscadero" Belts



No. 50-X—Special Buscadero Belt with two special No. 545 holsters—same as used by Ed McGivern, page No. 3 **Price \$75.00**

Any original belt or holster will be made to your specifications.



No. 50 — BUSCADERO BELT, finely carved, suede lined, any calibre loops. **Price \$27.50**

No. 51 — (Not illustrated), same style as No. 50, full carved, suede lined, any calibre loops.

Price \$25.00

No. 15 — BODY BELT, finely carved, suede lined, a great belt for riding or driving.

Price \$15.75

Silver and Gold Mounted Belts

An artistic creation of belts equipped with sterling silver and gold buckle sets consisting of buckle-loop and tip to match. Something distinct and which for beauty and service will appeal to each who wants "The Best". The material is the finest, the carving of a master. The buckle sets are sterling silver and gold. See buckle description.

No. 23—Select material, artistically carved, with No. 437-R Silver Buckle set. Width of belt, 1 3/4".

Price.....\$27.75 — Postage.....30c

No. 25—Select material, artistically carved, with 3/4" No. 437 Sterling Silver buckle, loop and belt tip. Width of belt 1 3/4".

Price.....\$23.50 — Postage.....30c

No. 27—Select material, finely carved, with 3/4" No. 437 buckle, loop and tip. Width of belt 1 1/2".

Price.....\$15.50 — Postage.....30c

No. 29 — Select material, finely carved, tapered ends. No. 437-R Sterling Buckle, Loop and Tip. Width of belt 1 1/2".

Price.....\$20.95 — Postage.....30c

No. 31 — Select material, finely carved, shaped ends, with No. 437 Sterling Silver buckle, Loop and Tip. Width of belt 1 1/2".

Price.....\$16.70 — Postage.....30c

No. 33 — Oval raised center, dress belt equipped with Sterling Silver 3/4" buckle, size of belt 1".

Price.....\$16.50 — Postage.....30c

Same belt with commercial buckle. Price \$7.50
These belts finished either Tan or Black.

No. 35 — Hat Band, with Sterling Silver buckle, 3/8" buckle and billet.

Price.....\$7.50 — Postage.....25c



No. 23 No. 25 No. 27 No. 29 No. 31 No. 33

GIVE EXACT WAIST MEASURE

Above prices include Federal Tax on Silver.

NOTICE:—ALL BELTS OVER 38" in LENGTH, ADD
10 CENTS ADDITIONAL FOR EACH INCH.



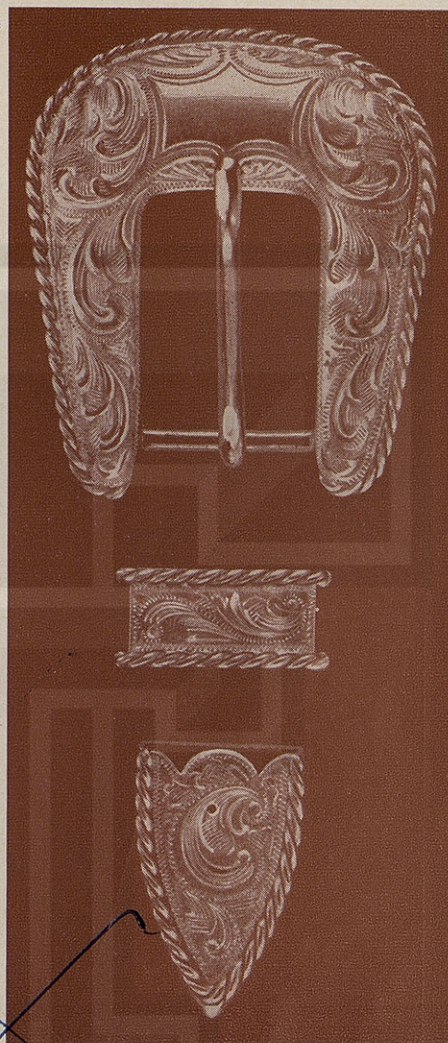
No. 153

No. 153—Sterling Silver, finely engraved, $\frac{3}{4}$ " wide — this set includes buckle, loop and tip.

Price	\$10.00
20% FEDERAL TAX	2.00
	\$12.00

No. 153-X—(Not illustrated) Sterling Silver, finely engraved, overlaid with gold and with four rubies, $\frac{3}{4}$ " wide. This set includes buckle, loop and tip.

Price	\$25.00
20% FEDERAL TAX	5.00
	\$30.00



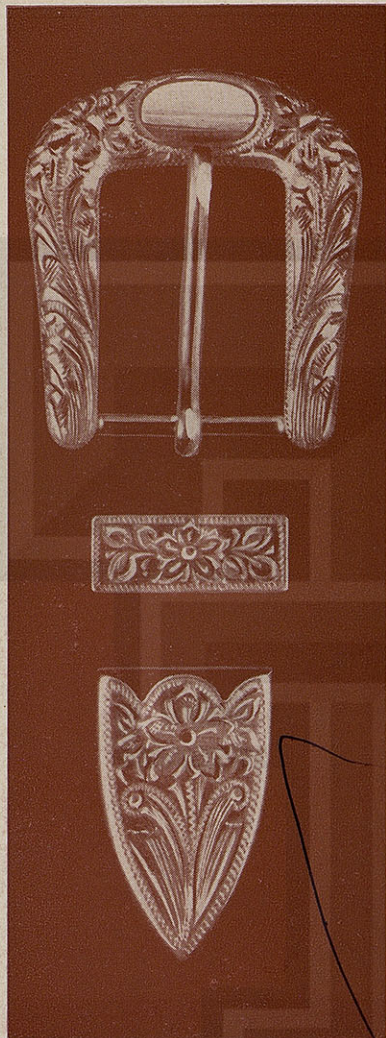
No. 153-R

No. 153-R—Sterling Silver, finely engraved, with silver rope edge, $\frac{3}{4}$ " wide — this set includes buckle, loop and tip.

Price	\$15.00
20% FEDERAL TAX	3.00
	\$18.00

No. 153-XR — Sterling Silver, heavily overlaid with gold and set with rubies, with gold rope edge — this set consists of buckle, loop and tip. This is a most wonderful product.

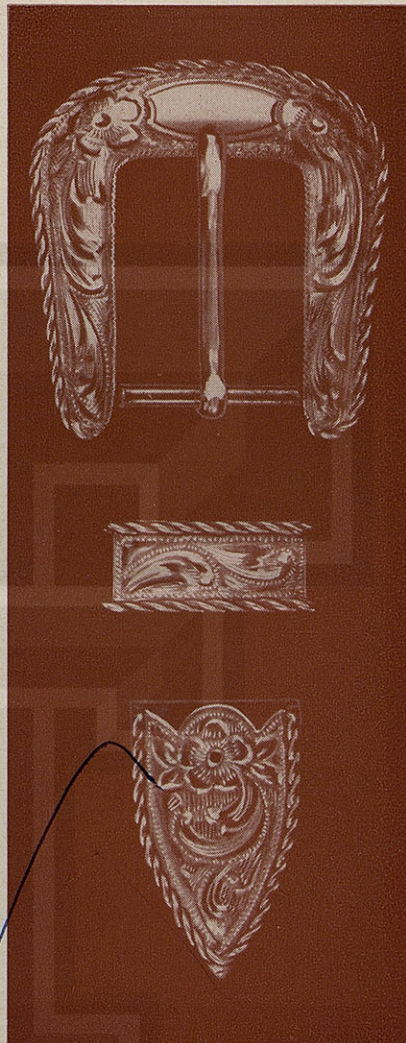
Price	\$40.00
20% FEDERAL TAX	8.00
	\$48.00



No. 437

No. 437—Sterling Silver, finely engraved, $\frac{3}{4}$ " wide—this set includes buckle, loop and tip.

Price	\$7.50
20% FEDERAL TAX	1.50
	\$9.00



No. 437-R

No. 437-R—Sterling silver, with silver rope edge, finely engraved, $\frac{3}{4}$ " wide—this set includes buckle, loop and tip.

Price	\$12.50
20% FEDERAL TAX	2.50
	\$15.00

These Sterling Silver buckle sets are the highest quality and the most artistic finish, made by the finest artisans and of the most select material—**THEY ARE THE BEST.**

XAS

with
aved,
ackle,

12.50
2.50
15.00

