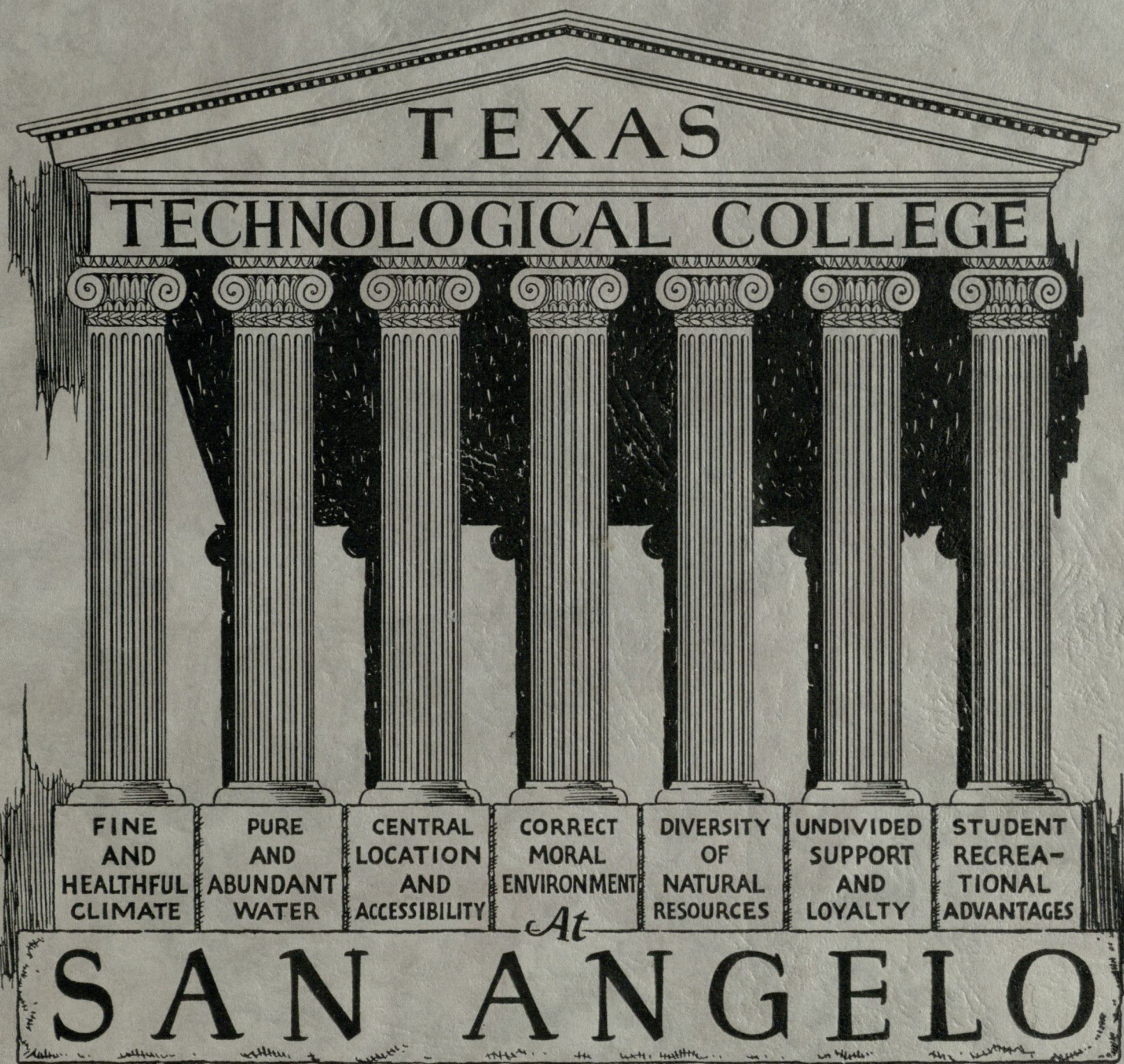


# A BRIEF

RESPECTFULLY SUBMITTING OUR CLAIMS  
FOR THE LOCATION OF  
THE



*On these Pillars of Strength  
Let a Great School be Buildded*



# *San Angelo and Tom Green County*

## *At a Glance*

### THE CITY

Population, 1920 census	- - - -	10,060
Population 1923, estimated	- - - -	12,500
Elevation, feet	- - - -	1,860
Mean temperature, winter	- - - -	52.8
Mean temperature, summer	- - - -	76.3
Average annual rainfall over period of 15 years		20.80
Average clear days over same period	- -	203.9
Postal receipts, 1922, (first class office)	-	\$48,830.56
Average daily water consumption, gallons		2,500,000
Wholesale and jobbing business, 1922, over		\$11,000,000
Bank Deposits, last call	- - -	\$4,617,685
Banking Capital and Surplus, 1923	-	\$1,975,000
Bank resources, 1923	- - -	\$9,000,000
Wool Receipts, 1922, pounds	- -	8,000,000
Mohair Receipts, 1922, pounds	- -	1,500,000
Taxable values, 1922, 60% basis	- -	\$8,486,580
City Tax Rate, 1922	- - - - -	\$2.10
Bonded Indebtedness	- - - -	\$512,000
Insurance key rate	- - - - -	28c
Area of City	- - - - -	7½ sq. miles
Wholesale houses and jobbing firms	- -	70
Miles paved streets	- - - - -	9½
Scholastic population	- - - - -	2224

### THE COUNTY

Population, 1920 census	- - - -	15,210
Area, square miles	- - - -	1,501
Approximate acreage	- - - -	960,645
Area susceptible to cultivation	- - -	640,000
Non-irrigated acreage in cultivation	-	78,000
Area under irrigation	- - -	7,103
Area irrigable under present systems	-	10,040
Area susceptible of irrigation, acres	- -	75,000
Tax valuation, 1922, 40% basis	- -	\$12,904,715
County and State tax rate	- - -	\$1.65
Bonded Indebtedness	- - - -	\$540,000
Scholastic population outside San Angelo	-	1,598
Qualified voters in County	- - - -	3,833
Expenditures 1920-1923 on hard surface roads		\$517,000
Miles paved roads	- - - - -	36
More than 100 miles of living running streams.		



## Foreword

**P**OSSESSING implicit faith in the personnel of the Locating Board, and moved by a genuine desire to aid in its important work, we respectfully submit the data and information contained in this brief in support of this, our application for the location of the Texas Technological College in the City of San Angelo, and earnestly claim that such location will most nearly approximate a realization of the supreme feature of the Act of the Texas Legislature providing for the establishment of the school, viz.:



*Sunset on South Concho After a Spring Shower, March, 1923*

"The primary consideration which shall outweigh all others in the minds of the locating board shall be to locate the College where it can, in the future, render the greatest service to the State and the section of the United States for which it is specifically maintained."

All statements of fact in this brief are, we believe, true, and a supplemental file is attached verifying them in detail.

CITIZENS' COMMITTEE,  
San Angelo, Texas.

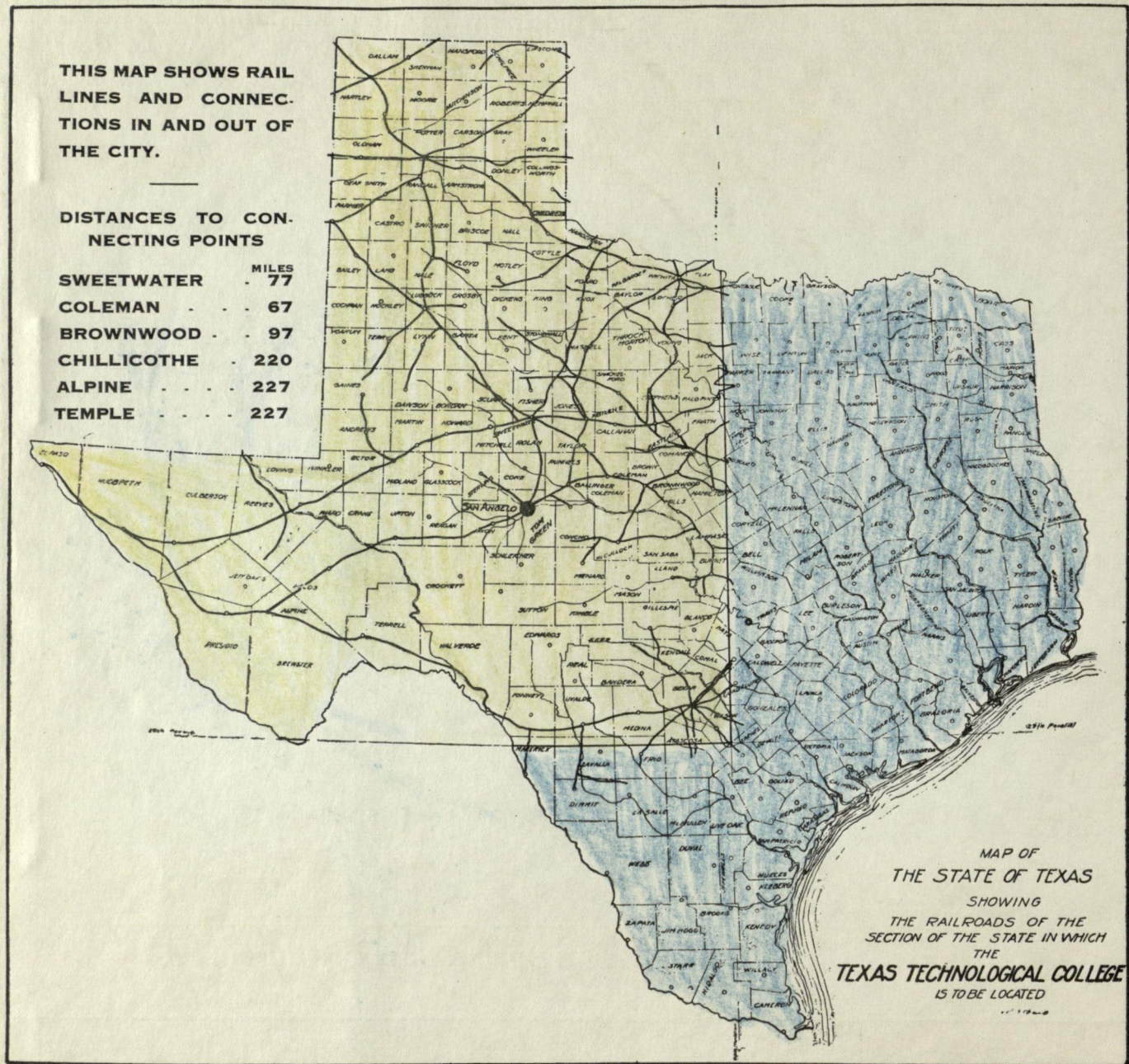
By William M. Hemphill, Chairman.  
April 20, 1923.



## Location and Accessibility

(With Relation to Established Rail Lines)

**S**AN ANGELO is located on two lines of the Santa Fe, and on the main line of Orient railways. It has convenient connection by these lines with the Texas & Pacific and Santa Fe Panhandle lines at Sweetwater, the main line of the Santa Fe at Coleman, the Fort Worth and Denver at Chillicothe, the Frisco at Brownwood, the Southern Pacific at Alpine, and all lines of the Santa Fe and Katy at Temple.



### Comparative Table of Short Line Mileage, Time and Railway Fares

	To—	HOUSTON			SAN ANTONIO			DALLAS			FORT WORTH			WICHITA FALLS			AMARILLO			EL PASO		
		Miles	Time	Fare	Miles	Time	Fare	Miles	Time	Fare	Miles	Time	Fare	Miles	Time	Fare	Miles	Time	Fare	Miles	Time	Fare
FROM	SAN ANGELO	391	16-40	14.60	333	18-30	14.50	271	11-50	10.80	240	10-10	9.66	241	18-0	9.29	319	13-30	12.04	449	20-10	16.69
	BIG SPRINGS	474	24-25	17.50	415	23-50	17.51	300	11-50	10.79	267	9-20	9.55	233	17-10	9.82	308	12-40	11.13	348	11-44	12.53
	SWEETWATER	408	15-20	15.23	350	17-10	15.14	234	8-25	8.42	202	6-55	7.18	167	14-45	7.45	243	10-25	8.75	413	14-24	14.90
	LUBBOCK	529	29-55	19.61	471	22-10	19.52	352	14-30	13.35	323	13-0	13.35	288	14-40	11.83	122	4-10	4.39	518	31-20	19.28
	EASTLAND	344	19-53	18.73	330	19-48	18.04	137	4-50	4.92	105	3-25	3.78	195	10-55	10.95	339	19-55	12.25	510	17-04	18.40

THE FIGURES PRECEDING HYPHEN IN TIME TABLES ARE HOURS, AND FOLLOWING HYPHEN ARE MINUTES.

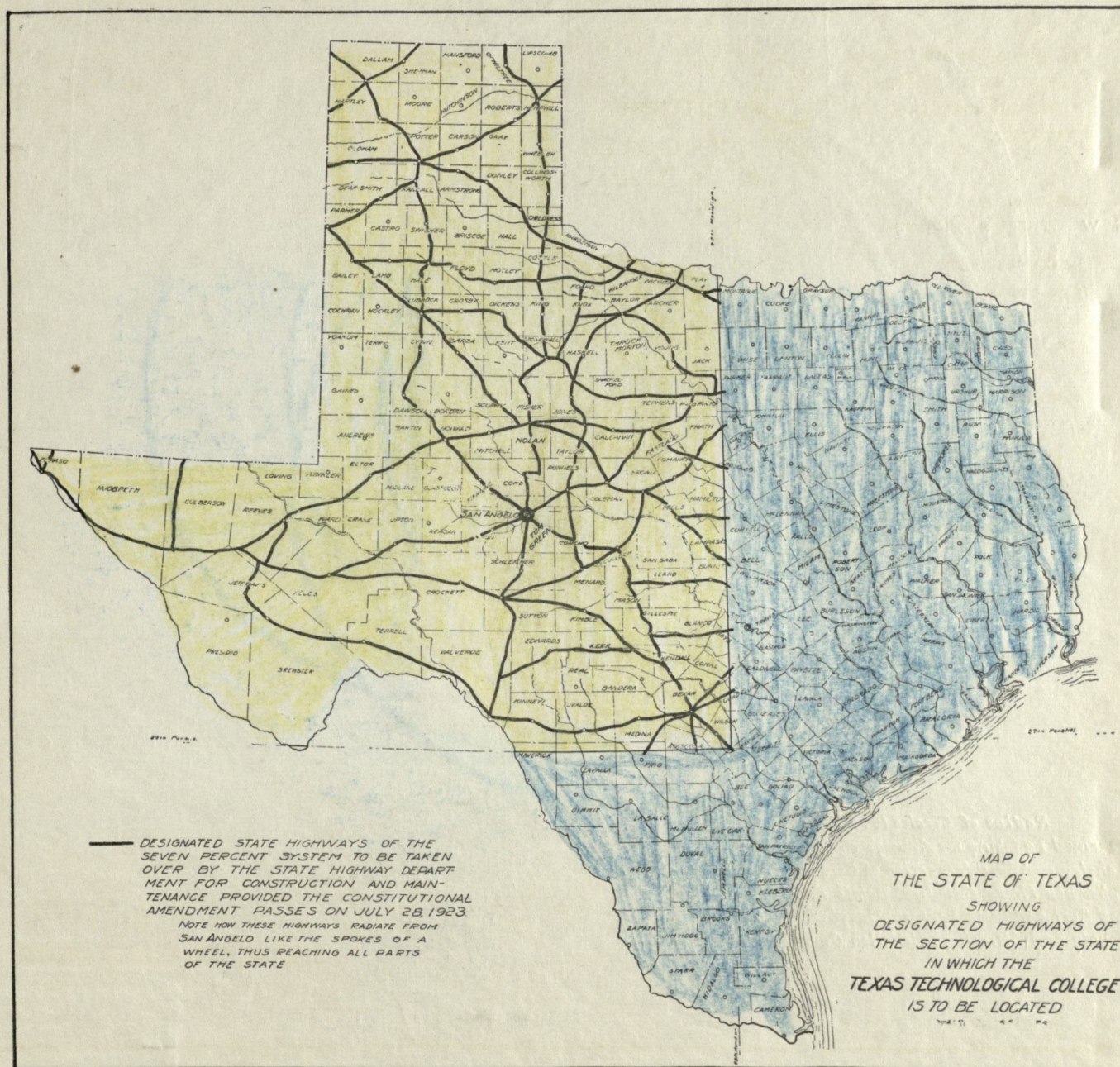
San Angelo is reached relatively as quickly and economically by rail from the leading cities of the State as any point in the designated area.



## Location and Accessibility

(With Relation to Established State Highways)

**S**AN ANGELO is the point of intersection of three major state, 7% government aid highways, one paved 54 miles south from city and 16 miles north, in addition to many miles of graveled and graded roads in every direction. San Angelo, on account of its central location, being practically the center of a circle drawn through Houston, San Antonio, Greenville and Amarillo, and its fine natural and improved roads, can be quickly and conveniently reached by automobile from any section of the State.



***This Map Shows San Angelo's Relation to Principle Highways***

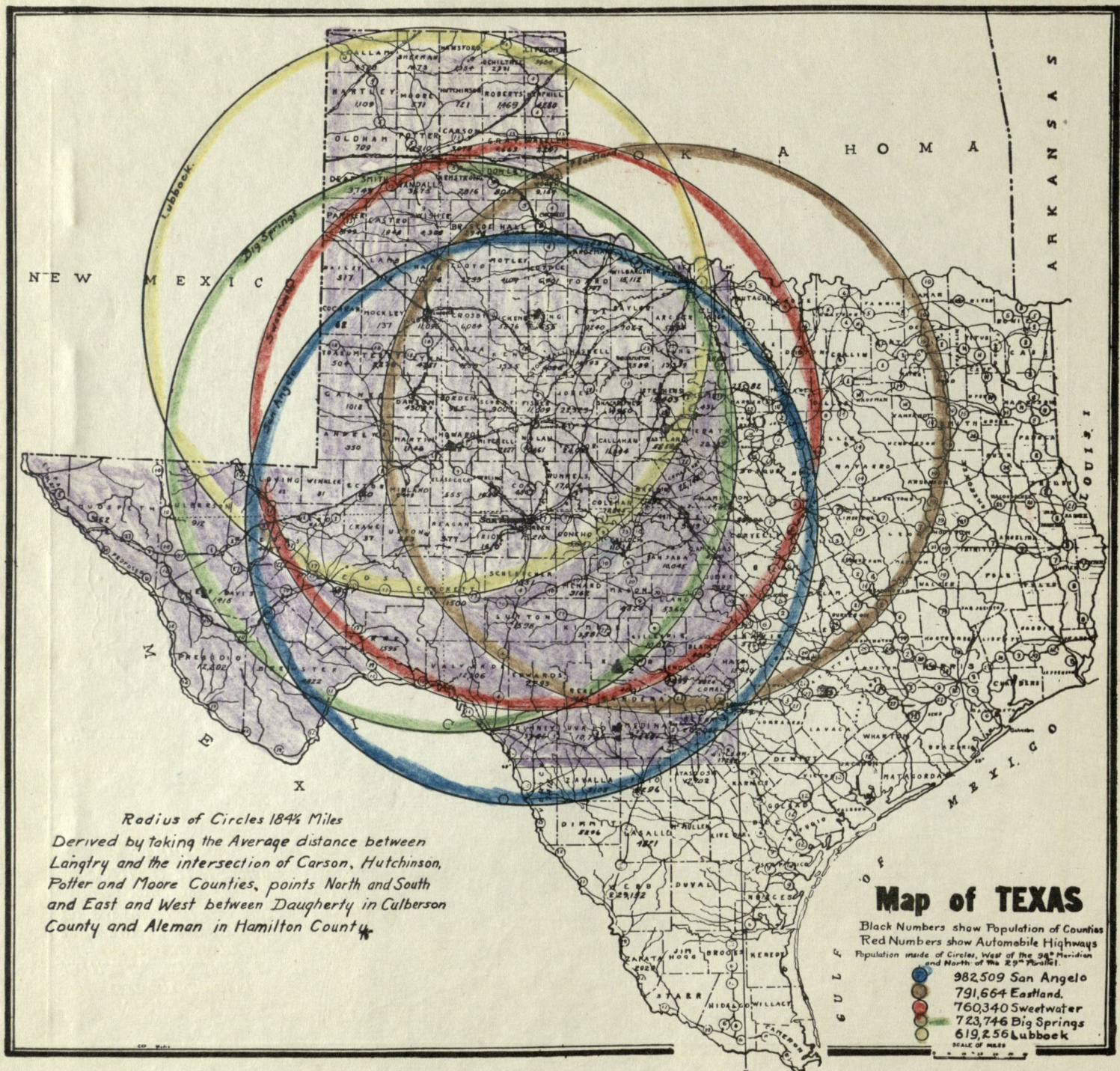
A larger percentage of students each succeeding year go to school by automobile, rather than by rail, and San Angelo's numerous highways, and their connections with others, makes its location peculiarly advantageous in this respect.



## Location and Accessibility

( With Relation Specially to Population in Designated Section for School )

**S**AN ANGELO has the largest population in the designated section within a radius of 185 miles of any competing city for the location of this school. The radius of 185 miles, adopted because it reaches extreme southeast border of section designated for location of the school, and using 1920 Federal Census as basis of computation of population, shows:



In addition to its railroads four daily automobile stage lines between San Angelo and Sonora, San Antonio, Sweetwater and Brownwood, and the fine natural and partially paved government aided state highways make this city easy of access from any point and any direction.

A tabulated statement verifying the population figures in this map and the compared areas is shown in supplemental file attached.

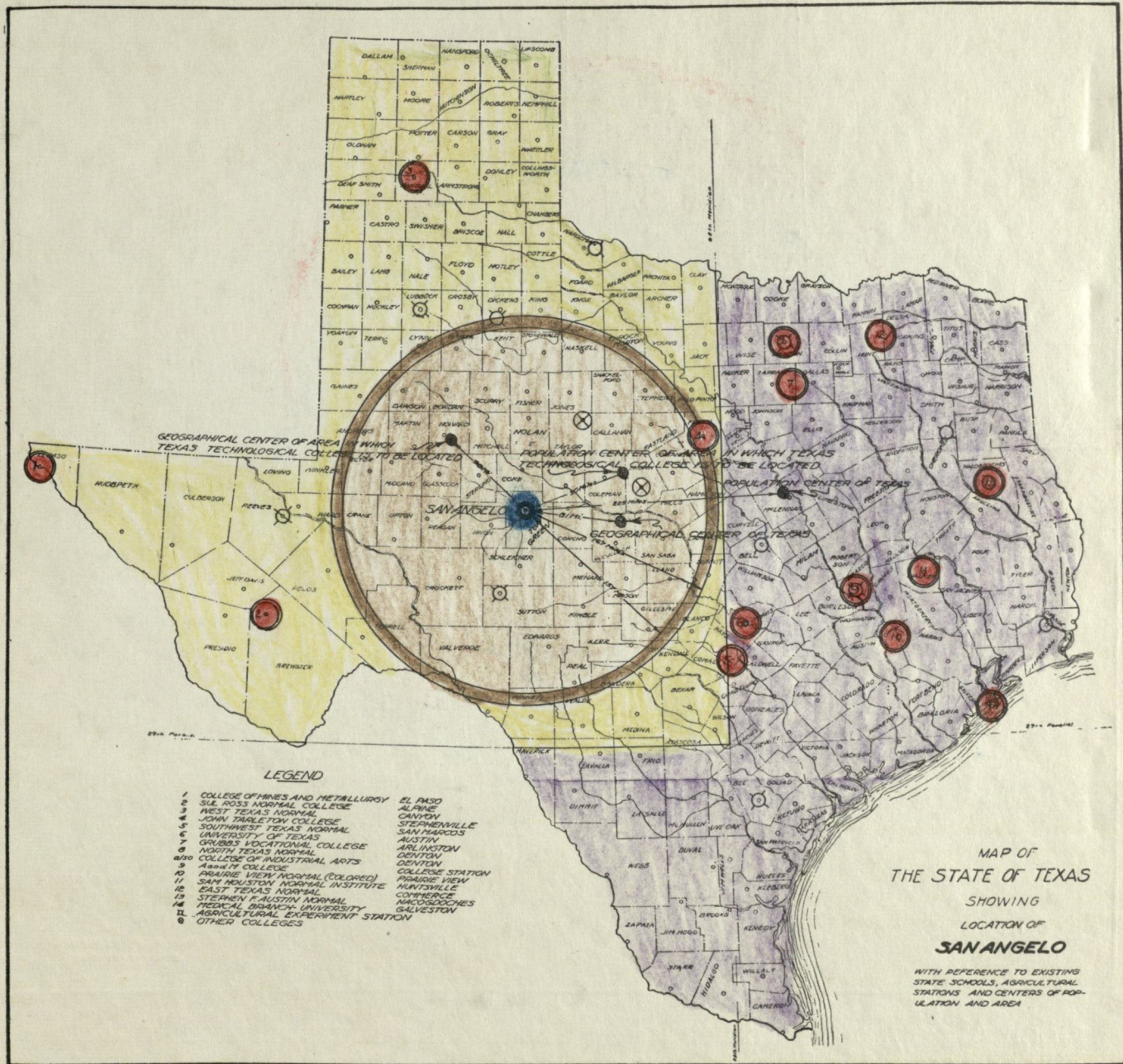
Necessarily a prime consideration in the location of the school is to so situate it that it may most conveniently serve the greatest population, and San Angelo's geographical situation is particularly and exceptionally favorable in this respect.



## Location and Accessibility

(With Relation to Geographical and Population Centers and Established Schools)

SAN ANGELO is ideally located with reference to geographical center and center of population of the section in which the school is to be located, as well as the geographical and population centers of the entire State. And the location of the school at San Angelo, as related to the already established schools maintained by the State would, better than any other location, serve to "balance" the location of all the State educational institutions.



San Angelo is midway between the geographical and population centers of the section in which the school is to be located.

It is less than 100 miles from the geographical center of Texas.

It is practically the center of the large territory and population *not now served by* any State Educational Institution.

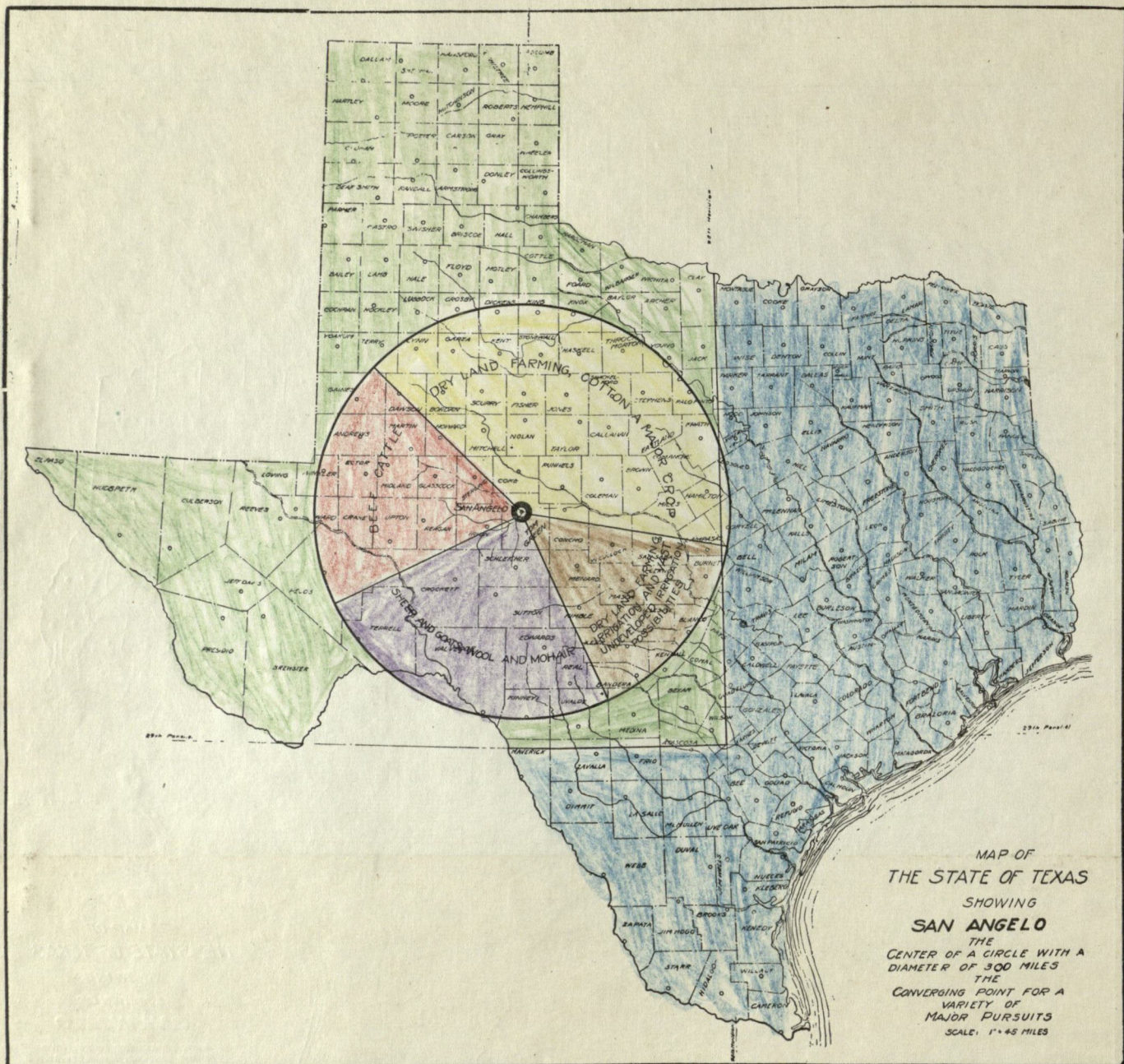
In the foregoing map the *already established schools* are indicated by the red circles, and the blue circle shows relative geographical location of San Angelo. Population and geographical centers both of the section within which school is to be located, and the State at large, are correctly shown on the basis of 1920 census.



## Location and Accessibility

( With Relation to Special Lines of Education Contemplated by This School )

**I**N view of the fact that this school is primarily intended as a Technological School, no other city or town in Texas is so centrally located with relation to the production of the raw products of the State as San Angelo. The Act establishing the school provides that the school "shall be a co-educational college giving thorough instruction in technology *and textile engineering* from which a student may reach the highest degree of education along the lines of manufacturing *cotton, wool, leather* and other *raw materials* produced in Texas," etc.



San Angelo, excepting only San Saba, is the largest concentration and shipping point for pecans in Texas.

It is by far the largest concentration and shipping point for wool and mohair in the United States.

To the east and north, and right up to its very door, a great cotton country.

To the southeast is much of Texas' irrigated lands, and its development just begun.

To the west and north concededly the greatest cattle country in Texas.

San Angelo is the gateway and depot for every product of both farm and ranch.

The foregoing map graphically shows the central location of San Angelo with relation to the production of cotton, wool, mohair, cattle, hides and pecans, and the various raw products of both irrigated and dry land farming.

What other location can show such a converging of the very raw products this school will teach its student body to fabricate?



## *The Wool and Mohair Industry*

**S**AN ANGELO is headquarters for what the Dallas News recently declared "the most highly specialized sheep and goat industry in the United States."



*The Sheep of the Concho Country Literally Cover the Earth.*

San Angelo concentrates, stores, classifies and markets annually, (including the warehouse at Mertzon, 25 miles southwest), 40% of Texas' entire production of wool—8,000,000 pounds annually.

San Angelo concentrates, stores and ships 25% of the entire mohair production of Texas—1,500,000 pounds annually.



*Its Goats and Mohair Are Famous Everywhere.*

The estimated value of the 1923 wool and mohair clip which San Angelo will distribute, is, based on present market prices, approximately \$5,000,000.00.



## The Cattle Industry

**A**S indicated by the map on page six, San Angelo enjoys a fortunate location with respect to this great industry.

San Angelo is one of the greatest cattle shipping points in Texas.



*From San Angelo in Every Direction Are Great Herds of Cattle.*

The "Concho Country," of which San Angelo is the chief city, is everywhere recognized as the finest nursery ground for the breeding of cattle in Texas.

During the months of April and May of each year an average of one car of cattle every 30 minutes of each 24 hours passes out of and through this city to Oklahoma and Kansas buyers and ranges.



*The Quality of Its Cattle Are Recognized Everywhere.*

On account of the express character of this school cattle and their by-products are of peculiar importance, and San Angelo immediately presents every feature of the industry from breeding to the finished beef and the hide ready for tanning and fabrication.



## The Pecan Industry

SAN ANGELO, according to a lecture by Dean Kyle of the Texas A. & M. College, copy of which is shown in supplemental file with this brief, second only to San Saba, concentrates and ships more pecans than any city in Texas.

In the number of native pecans it is doubtful if Tom Green County is exceeded by any county in Texas, and their generous product of high quality are a potential asset,—their generous distribution on every running stream a beautiful blessing.



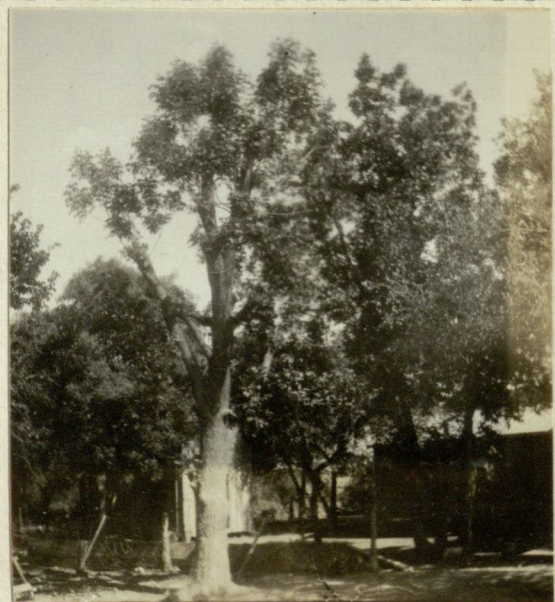
YOUNG NATIVE TREES

Many owners of lands upon which are located these trees, are improving the quality and productiveness of the product by top-working trees even as old as 30 years by budding on the paper-shell varieties.



TOP-WORKING THE NATIVE PECAN

On each of the sites offered by this city for this school there are hundreds of these beautiful and valuable trees.



ONE YEAR'S GROWTH OF TOP-WORKED TREE

The pecan industry is one of the coming great industries of Texas, and San Angelo has the native product in abundance.



## *Agriculture--Dry Land and Irrigation*

**S**URELY it must be of prime importance that this school be located where opportunities exist for both irrigation and dry land agriculture. On both of the sites offered by this city for the school ample opportunity is provided. According to the records of the State Board of Water Engineers, over 7000 acres of land in Tom Green County, and thousands of acres in Irion, Concho, Menard, San Saba, Mason and Kimble, and other counties immediately adjacent are now under irrigation, and the Board of Water Engineers has just recently recommended for tentative survey an irrigation project at San Angelo which will provide water for 200,000 acre feet, and irrigate 60,000 acres of land running southeast from the corporate limits of this city.



*There Is No Such Thing As Crop Failure on Irrigated Lands Here*

And yet, on dry land, in 1922, on farms reaching to San Angelo's very city limits, there was produced in the city's immediate trade territory 5,712 bales of cotton in Tom Green County, 7,042 in Coke, 6,403 in Concho, 40,887 in Runnels, besides the other products of the farms.

And Tom Green County has practically every variety of soil to be found in Texas,—the level black lands of the Lipan Flat, black sandy, sandy loam and red lands, upland and river bottoms, and its facilities and natural opportunities are unrivalled.

Where else is such a happy combination presented?



## *Agriculture---Dry Land and Irrigation*

THE Concho rivers, which provide water for irrigation and water for the city, rise in beautiful springs, and the natural flow is unaffected by drought. Numerous opportunities exist for great dams in all these streams to conserve the water, and distribute it over the hundreds of thousands of acres of tillable land adjacent. In addition to this, and running squarely through one of the sites offered for this school is abundant shallow well water of fine quality, adaptable to irrigation purposes. See report of Dr. Beede, of the State University in supplemental file.

There are no injurious mineral salts nor alkalis in this water to injure crops, nor deteriorate the fertility of the land, and on account of advantageous climatic conditions there is *no crop grown in Texas*, which can not be raised on irrigated land here successfully. Even ribbon cane and celery, long-staple cotton and such products, make bountiful yields of superior quality, and as much as two and one-half bales of cotton have been grown on a single acre of land.



*Tom Green County Has Ten Living Streams In Its Borders.*

And on account of the rock and gravel bottoms of its running streams, when dams are constructed in them they do not "silt up," as evidenced by bodies of water unimpaired in quantity backed up by dams in the county more than thirty years old.

The indisputable slogan of Tom Green County is:

*"More miles of running water than any county south of Mason-Dixon Line."*



## Climate and Health

**T**HE name, "San Angelo," is synonymous with "Health." Elevation, 1860 feet. Mean annual temperature, 64.5. Mean summer temperature, 76.3. Mean winter temperature, 52.8. Average annual rainfall, 20.80 inches,—for past ten years, 1913-1922, 21.17 inches.

### RAINFALL FOR SAN ANGELO, TEXAS

#### By Months and Years Since 1910

	1910	1911	1912	1913	1914	1915	1916	1917	1918	1919	1920	1921	1922
JAN.-----	0.60	0.17	0.00	0.44	T.	1.12	0.31	0.50	0.46	5.41	2.43	.33	.41
FEB.-----	0.15	3.95	2.06	0.80	T.	0.96	0.00	0.10	0.41	1.68	.35	.77	.10
MARCH-----	1.18	2.37	0.40	0.30	0.17	T.	0.00	0.22	0.25	1.21	.26	2.66	.12
APRIL-----	3.00	3.08	1.49	1.65	1.20	1.25	3.62	0.55	0.10	1.87	.00	.62	6.07
MAY-----	0.82	0.04	1.12	6.27	5.66	2.43	1.60	2.81	3.88	3.87	1.96	2.20	5.33
JUNE-----	0.94	0.97	1.62	4.60	1.87	0.47	1.60	0.90	0.35	6.13	4.28	3.89	2.13
JULY-----	0.08	4.80	0.28	0.60	2.69	1.60	2.82	0.90	0.14	3.31	.59	.17	3.40
AUGUST-----	T.	7.31	2.90	1.75	7.63	1.44	1.04	0.41	0.25	2.83	6.29	.82	.03
SEPT.-----	2.19	2.15	0.00	1.57	0.20	8.27	1.06	1.90	0.80	6.57	2.15	.70	1.69
OCT.-----	1.88	1.06	0.92	3.19	4.40	0.25	2.56	T.	4.74	4.85	1.72	T.	2.08
NOV.-----	T.	T.	2.02	7.02	3.94	T.	0.78	T.	1.48	2.38	.83	T.	1.28
DEC.-----	0.40	5.96	2.07	1.95	0.21	0.40	0.04	T.	1.60	.64	.13	.15	.00
TOTAL-----	11.24	31.86	14.88	30.14	27.94	18.19	15.43	8.29	14.48	40.75	20.99	12.31	22.64

Average for 13 years, 20.70.

### *With Respect to Climate the San Angelo Country Is the Italy of Texas*

The splendid air of the Concho Country is as pure as water and as invigorating as old wine.

Its nights are always pleasant and conducive to sound sleep and rest. Prevailing winds from the Southwest.

### Average Number of Clear and Cloudy Days Per Year

	Snow	Rain	Trace Rain	Cloudy	Part Cloudy	Clear
1910 -----		30	16	44	98	223
1911 ----- 2		46	25	63	100	202
1912 -----		22	5	50	57	258
1913 ----- 1		37	9	70	88	205
1914 ----- 1		40	27	59	104	202
1915 ----- 4		32	17	57	91	217
1916 -----		29	30	58	112	195
1917 ----- 2		24	27	65	113	187
1918 ----- 1		35	20	66	78	221
1919 ----- 5		65	43	109	103	135
1920 ----- 2		40	28	56	94	196
1921 -----		37	22	35	123	195
1922 ----- 1		47	18	55	79	222
Average -----	1.46	37.2	22	60.5	95.3	203.9

Sultry nights, excessive humidity and malarial conditions do not exist in the San Angelo country.

It is an important consideration in the location of the school to so place it that elevation and climate energize the student, and do not enervate him.



## Climate and Health

WHILE no question doubtless will be raised as to the healthfulness of this climate, we desire to call the attention of the locating board to the remarkable showing made by the detailed statement of the physicians in the supplemental file. The out standing features of San Angelo's claim to special healthfulness are: (1) Absolute freedom from malarial conditions; (2) Rigid segregation of tubercular sanitariums, (all of them being outside the city); (3) Large proportion of sunshiny days; (4) Pure water; (5) Rigid supervision of dairies and slaughtering establishments; (6) An elevation stimulating in its effect, but not injuring the heart's action.

CLIMATIC COMPARISONS WITH OTHER CITIES IN TEXAS FROM GOVERNMENT REPORTS	Mean Annual Temperature	Mean Summer Temperature	Mean Winter Temperature	Average Annual Rainfall	Average Last Frost	Average First Frost	Length of Grow- ing Season
CITY							
San Angelo -----	64.5	76.3	52.8	20.80	Mar. 25	Oct. 20	209
Abilene -----	64.1	76.0	52.2	24.13			
Amarillo -----	56.4	69.1	43.6	21.68	Apr. 16	Oct. 24	196
Austin -----	67.5	78.3	56.6	33.10			
Dallas -----	65.4	76.9	53.7	37.09	Mar. 14	Nov. 12	241
Del Rio -----	69.6	80.1	59.0	21.01	Mar. 4	Dec. 19	
El Paso -----	63.5	75.1	51.9	9.27			
Houston -----	69.1	78.4	59.7	47.13			
San Antonio -----	67.9	77.6	58.2	26.75			

Where records are not given, the figures are not available.

There have been but two cases of typhoid fever in this city of over 10,000 people in the last two years.

Malaria, pellagra and simliar diseases are absolutely non-existent here.

According to reports of physicians shown in attached file, diseases of the respiratory organs rarely *originate here*.

The leading specialist in this section, and one of the best known anywhere, (Dr. Boyd Cornick), states that in his thirty years' residence, he has known but *one case* of tuberculosis originating *de novo* in this city.

Sick people from other sections remove to *every city and town* in the area designated for the location of this school, to obtain the benefit of the climate of the Western section of Texas.

What other place in Western Texas takes such precautions, by segregation outside city limits, and strict enforcement of sanitary and health ordinances to guard against possible infection?



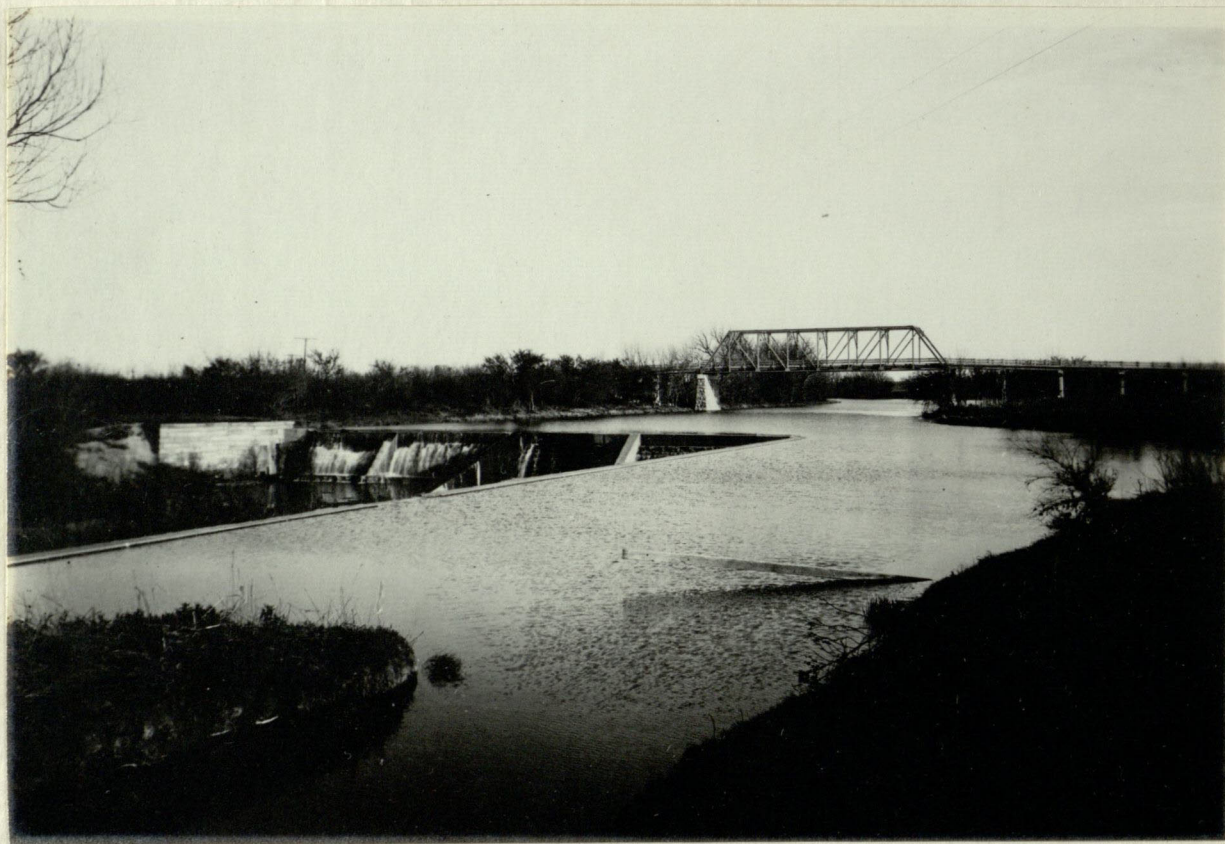
## Water Supply---Quantity

THE city water supply in San Angelo is operated by the San Angelo Water, Light & Power Co., a \$750,000.00 subsidiary of the Interstate Electric Co. of New York City.

Two dams in the South Concho river, one about one mile and the other about four miles from the city impound 400,000,000 gallons of water, furnished by the run-off of the South Concho, and Middle Concho rivers and Spring and Dove Creeks. This is constantly fresh, running water, as these streams all rise in great springs in a 30-mile radius of San Angelo. The present average daily consumption of San Angelo is about 2,000,000 gallons, and the daily pumping capacity is 5,000,000 gallons. A measurement made of the natural flow of the combined streams at Ben Ficklin crossing, 3 miles above San Angelo, with irrigation ditches cut off, on March 25, 1922, showed 60 cubic feet per second, or 39,000,000 gallons daily supply.

There has never been a shortage of water in San Angelo for any purpose. There has never been a request to cease watering lawns.

San Angelo's natural water supply is equal to the needs of the largest city in Texas.



*A View of the Primary Waterworks Lake at San Angelo*

The daily off-flow of water from South Concho springs as measured by the engineer of the United States Government is 8.8 cubic feet per second, that of Spring Creek springs 9.9 cubic feet, and Dove Creek springs, as measured recently by the County Engineer 11 + cubic feet, a total natural off-flow of pure spring water of 29.7 cubic feet per second, in other words, **more than 19,000,000 gallons daily**—more than **nine times** the city's daily consumption—enough **spring water alone** to supply a city of 100,000 people. This takes no account of numerous springs along the river courses, no account of flood waters, and no account of the under-flow in the bed of the streams.

San Angelo challenges comparison with any city in Texas on the water question.



## Water Supply---Quality

SAN ANGELO'S water supply, it will therefore be readily seen, is not affected by droughts nor lack of rainfall. These springs, like Tennyson's brook, run on forever, and there has never been a drought of sufficient intensity or duration to even perceptibly affect them. In addition to all this, if reliance were required to be made here on *stored flood waters*, when the drainage area of the Conchos, (10,000 square miles), is considered, an ordinary spring freshet on these rivers would fill the largest artificial reservoir in Texas.

But who would drink out of a pond, when a bubbling spring is at hand?

Who would prefer to drink of impounded *surface water*, when he has but to turn to slake his thirst in a *rippling stream*?



*The Waterworks Reserve Dam at San Angelo*

In addition to all this there runs squarely through this city the same shallow water belt out-cropping at Lubbock and Plainview, (see copy of Dr. Beede's report in supplemental file), a test of this underground water supply made by the city in 1920, developed wells less than 100 feet deep, which furnished in eight hours continuous pumping, more than 200 gallons per minute without perceptible lowering of the water level in the well. Many truck gardens and small tracts are irrigated from wells in this water strata in San Angelo now.

San Angelo has water every way, everywhere, and all good to drink.



## Water Supply---Quality

**O**RIGINATING in beautiful springs, rushing out from beneath great limestone boulders, rippling in mountain streams over pebble and rock bottoms, before being impounded in the storage basins here, it can be little wondered that our water is pure. But to further insure its purity there is *now being installed* and will be complete by June 1, 1923, a \$35,000 filtration system, to maintain the water's clarity in overflow periods. It is not needed any other time.



*Spring Creek Springs*

A rigidly enforced city ordinance requires the chlorination of all water supplied the city for domestic purposes.

No surface drainage from the city area can get into the water supply.



*Dove Creek Springs*

It is of over-ruling importance that this school be located not "along the still waters," but along a rippling stream of clear water. Where else than in San Angelo can it be found?



## Water Supply---Quality

THE water of which we are so justly proud is neither salty, "gyppy," nor alkali. It is pure limestone water, hard it is true, but softened at practically a negligible expense per million gallons. It is a healthful water. The immediate supply distributed by the water company is chlorinated against possible contamination, and all surface water from the city is diverted below the dams by the Red Arroya, and its diversion canal. San Angelo's freedom from typhoid fever bespeaks more eloquently than mere words the quality of its great water supply.

The water furnished this city is analyzed at frequent intervals by both the city authorities and the water company to insure its purity for domestic consumption, and the company owns the river frontage on the reservoirs for several miles and prevents any contaminating trespassing.

Not only is the water good and healthful to drink, but, as previously stated, does not injure any vegetation. Irrigated farms of more than 30 years' existence and annual use of the water show no deteriorating effects from the water's use.

San Angelo's water is not only as clear, but is as pure as crystal.

### COPY OF RECENT REPORT OF EXAMINATION OF SAMPLE OF WATER:

*For San Angelo Water, Light & Power Company, San Angelo, Texas*

**Laboratory Number 64098**

#### MINERAL SUBSTANCES

		Parts per million.	Grains per U. S. Gal.
Silica . . . . .	(SiO <sub>2</sub> )	14.8	0.86
Iron . . . . .	(Fe + + )	Trace	0.0
Alumina . . . . .	(Al <sub>2</sub> O <sub>3</sub> )	1.2	0.07
Calcium . . . . .	(Ca + + )	61.9	3.62
Magnesium . . . . .	(Mg + + )	35.6	2.08
Sodium . . . . .	(Na + )	99.9	5.85
Bicarbonates . . . . .	(HCO <sub>3</sub> - )	290.4	16.99
Carbonates . . . . .	(CO <sub>3</sub> -- )	0.0	0.00
Chlorides . . . . .	(Cl - )	119.0	6.96
Sulphates . . . . .	(SO <sub>4</sub> -- )	106.8	6.25
Nitrates . . . . .	(NO <sub>3</sub> - )	0.0	0.00
Total Solids . . . . .	(100° C )	624.0	36.50
Suspended Matter . . . . .			

#### MINERAL SALTS (Hypothetical)

Iron Bicarbonate . . . . .	Fe (HCO <sub>3</sub> ) <sub>2</sub>	0.0	0.00
Calcium Bicarbonate . . . . .	Ca (HCO <sub>3</sub> ) <sub>2</sub>	250.8	14.67
Magnesium Bicarbonate . . . . .	Mg (HCO <sub>3</sub> ) <sub>2</sub>	121.9	7.13
Sodium Bicarbonate . . . . .	NaHCO <sub>3</sub>	0.0	0.00
Calcium Sulphate . . . . .	CaSO <sub>4</sub>	0.0	0.00
Magnesium Sulphate . . . . .	MgSO <sub>4</sub>	75.1	4.39
Sodium Sulphate . . . . .	Na <sub>2</sub> SO <sub>4</sub>	69.4	4.06
Calcium Chloride . . . . .	CaCl <sub>2</sub>	0.0	0.00
Magnesium Chloride . . . . .	MgCl <sub>2</sub>	0.0	0.00
Sodium Chloride . . . . .	NaCl	196.4	11.49
Uncombined+Insol. . . . .	SiO <sub>2</sub> etc.		

#### HARDNESS

(In terms of Calcium Carbonate, CaCO<sub>3</sub>).

Due to lime salts . . . . .	154.7	9.05
Due to Magnesia salts . . . . .	145.9	8.53
Due to iron salts . . . . .	0.0	0.00
Total hardness . . . . .	300.6	17.58
Temporary hardness . . . . .	238.0	13.92
Permanent hardness . . . . .	62.6	3.66

Respectfully submitted,

KANSAS CITY TESTING LABORATORY.

By ROY CROSS.

RC:GC



## Water Supply---Availability

THE water supply at San Angelo is available in *any quantity* and for *every purpose* the school could use it. *It is already piped to and immediately available* on both of the sites offered for this school for campus and building purposes. It is available at very reasonable rates. Charges of the local company for water service are as indicated by the following schedule:

For first 2000 gallons.....	\$1.00
For next 2000 gallons or any portion thereof .....	.25
For next 6000 gallons.....	1.50
For next 15,000 gallons.....	3.00
For all over 25,000 gallons, 15c per 1000 gallons.	

NOTE: If the average monthly consumption of water equals or exceeds 100,000 gallons per month the following rate will apply:

For first 250,000 gallons, 15 cents per 1000 gallons.

For all over 250,000 gallons, 12½ cents per 1000 gallons.

As each site offered by this city for the school has several miles of river frontage, one on the Main Concho and the other on the South Concho, it is also available for *irrigation purposes* in the operation of irrigated farms.

And, important to be considered, it is also available by reason of the river frontage offered, for student recreational purposes. What more could add to the attractiveness of this great school, than to have at its very front entrance a beautiful, clear river where swimming, boating and the various water sports could be indulged in by the students, and, in a climate permitting these sports practically the entire year? What more inviting than to sit in the shade of pecan trees and watch the water whirling to the sea?

What other location can propose and deliver such a generous attraction?



## *Electric Power and Lights*

IN connection with the available water supply, it might not be amiss to mention that San Angelo has a most modern electric power and light plant, and that current is generated here and transmitted over a high-power line to various other smaller towns to the east and north of this city. The poles and wires are *already on both of the sites offered* by this city for the school. The electric light and power plant in this city, without any addition whatever, has a duplicate plant sufficient to take care of twice the present demand.



*Where Water Never Fails in Quantity, Nor Disappoints in Quality*

The rates for light and power will favorably compare with those of any city in the State.

### ***FOR ELECTRIC POWER***

For first 50 KWH - - 10c per KWH  
For next 100 KWH - - 8c per KWH  
For next 150 KWH - - 6c per KWH  
For all over 300 KWH - 4c per KWH

### ***FOR ELECTRIC LIGHTS***

For first 150 KWH - - 12c per KWH  
For next 150 KWH - - 10c per KWH  
For all over 300 KWH - 8c per KWH

On account of duplication in units, there is no such occurrence as failure of current in San Angelo.



## *Student Recreational Advantages*

**S**AN ANGELO offers peculiar advantages in this respect. It is one of the few cities in the State maintaining a municipal golf course and tennis courts, in addition to which the course of the San Angelo Country Club is recognized as one of the most beautiful and interesting in the State.



*On the Municipal Golf Course*

San Angelo has 43 acres in improved parks, and as many more acres already owned by the city and reserved for future improvement.

The municipal golf course is in easy walking distance of either of the sites offered for this school.



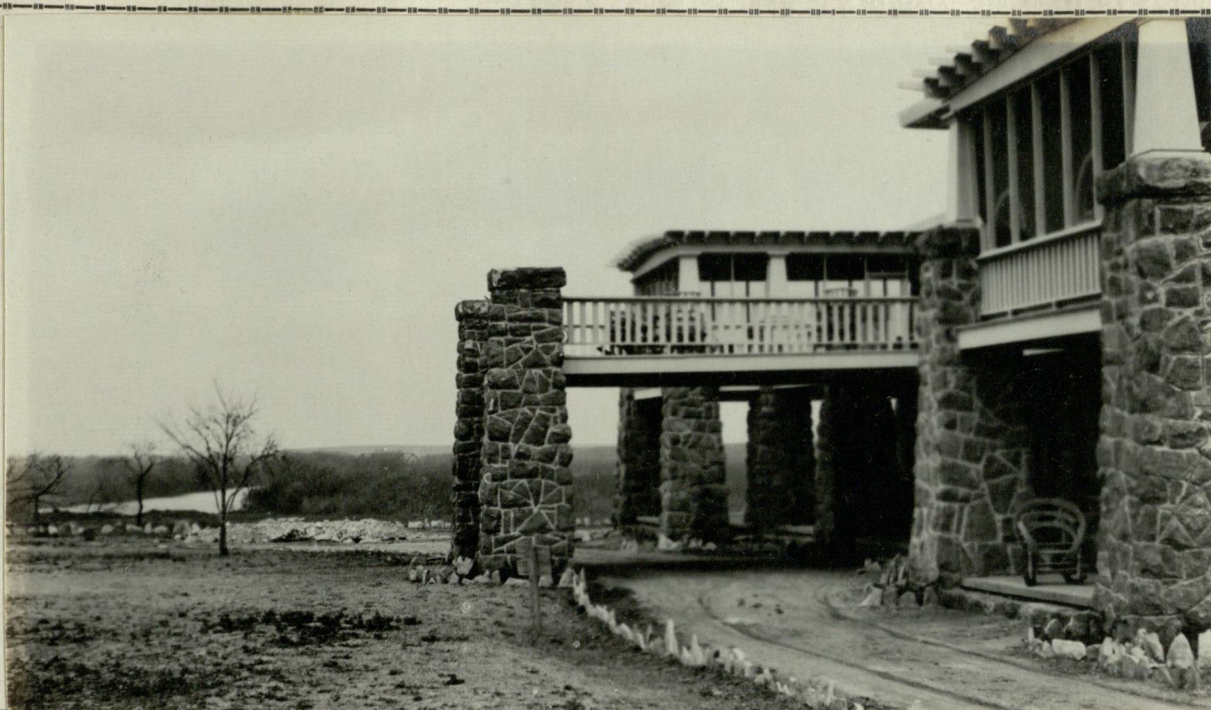
*In the Santa Fe Park*

San Angelo has more improved park area than any city in the designated section for the school, barring only San Antonio.



## *Student Recreational Advantages*

Our many miles of running streams, radiating in many directions from the city, our hills to the north and west, our fine roads, our parks and golf courses, offer surely more healthful things of interest to a student body than any merely level plain could do.



*The Country Club and Lake*

Fishing is always fine in the Concho rivers, and the streams are kept stocked from the Government and State fish hatcheries.

San Angelo's beautiful country club will compare favorably with any in the State.



*On the Beautiful Country Club Golf Course*

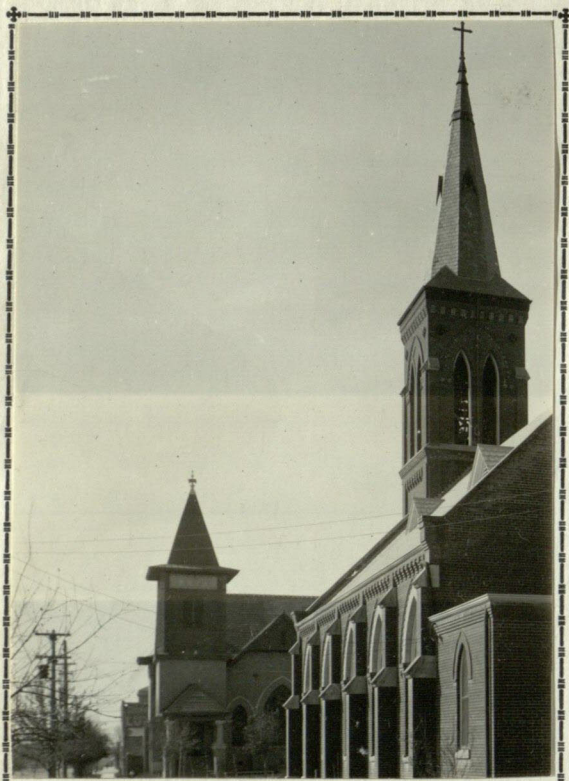
The popularity of golf is appealing to the student body everywhere. Why not locate this school at an interesting place?



## *The Moral Environment*

**S**AN ANGELO is a moral city. Its citizenship in as large percentage as any Western city of similar size are native-born whites. It has few negroes and relatively few Mexicans. A recent visitor from the East after spending a month here remarked that it was the most orderly city for its size, and had proportionately to population the fewest peace officers, he had ever observed. There is not now, and has not been for many years, any red-light or segregated vice districts. The boy scouts and order of De Molay have large organizations.

San Angelo has eighteen church structures, and practically every denomination is represented in the various organizations.



METHODIST AND CATHOLIC CHURCHES

San Angelo is not an oil town, and therefore is free from the character of population and immoral influences which inevitably follow in the wake of oil development.



CHRISTIAN AND BAPTIST CHURCHES



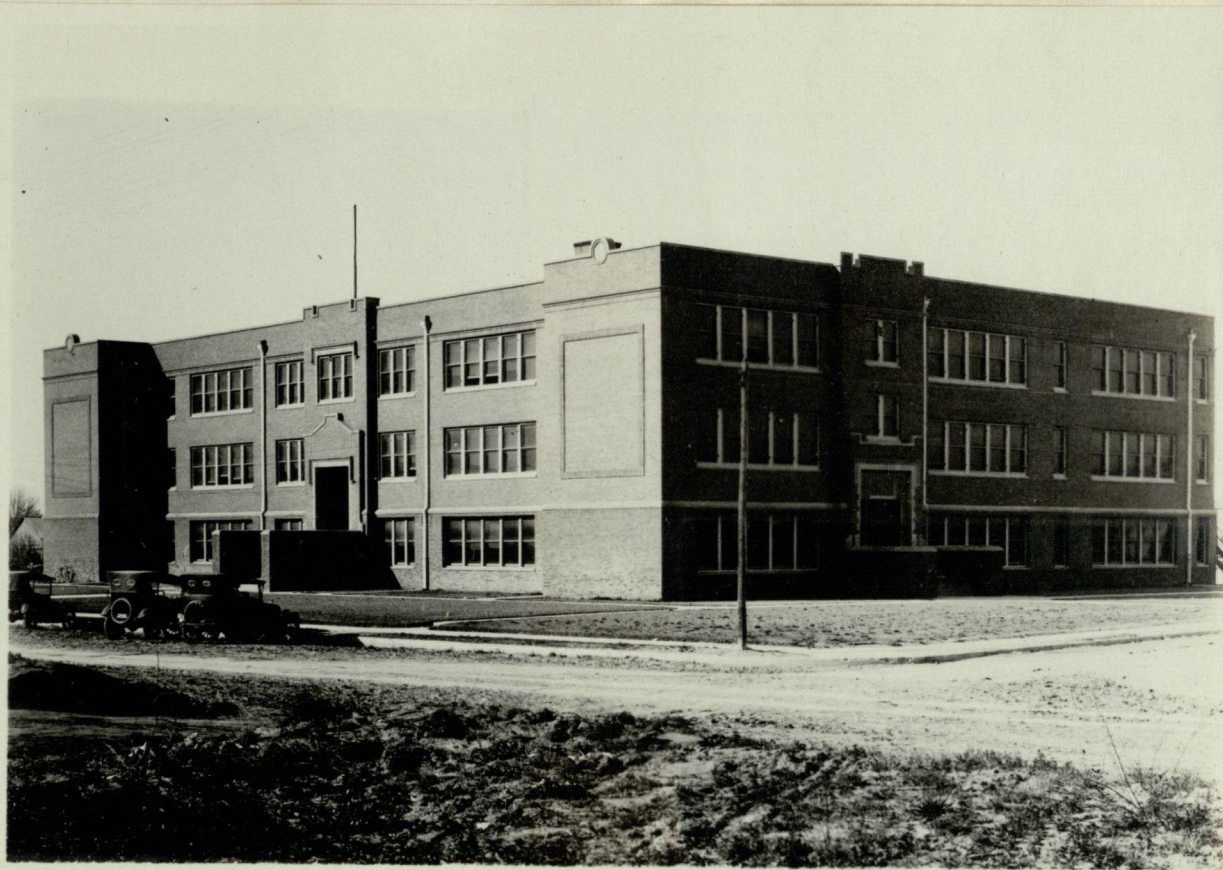
THE PRESBYTERIAN CHURCH

*The Young Man and the Young Woman Are Safe in San Angelo*



## *The Moral Environment*

SAN ANGELO has a modern high school building, with manual training, a junior high school, and four commodious, well-equipped ward schools. Its high school graduates rank high in all the higher state educational institutions.



*The High School*



THE JUNIOR HIGH



TYPE OF WARD SCHOOL

San Angelo's schools are affiliated with the State University and A. & M. College, and many higher institutions of learning, with a rating of 28 credit units.



## *The City of San Angelo*

IT is a too well demonstrated fact to admit of argument that large schools of this character are immediately handicapped when located away from at least a town large enough, and sufficiently developed in point of size, to afford the student body and faculty, and the property itself, the ordinary advantages of a city. San Angelo is one of perhaps two of the only large towns in the designated area seeking the school. Its broad, well-paved streets, handsome public buildings, fine homes, well-equipped public utilities and solid citizenship make it a specially desirable location.



*Federal Building and Postoffice*

San Angelo has a commission form of government, with the city manager feature, a first-class motor-equipped fire department, a daily newspaper and stores and shops which would do credit to a town several times its size.

Its relative freedom from factories and manufacturing enterprises, from the standpoint of a school location, is a materially favorable consideration.

San Angelo annually maintains the largest fair and exposition in Western Texas. Its premiums exceed in amount and value those offered at any other locality. Its fair is more than a local institution—it is a West Texas Institution.



## *The City of San Angelo*

**S**AN ANGELO is essentially a city of fine homes, and they are largely owned by those who occupy them. Its fine and abundant water provides opportunities for many beautiful lawns and yards.



*A Type of the Many Fine Homes in This City*

Many ranchmen, whose ranches are as much as 150 miles away, make this city their home.

New and fine residences are constantly under construction.



*View of One of the Principal Residential Streets*

San Angelo's location with reference to both agriculture and the livestock industry make it a natural location for the homes of both the ranchman and the retired farmer.



## The City of San Angelo

San Angelo has more than eight miles of paved residential streets. The familiar adage here is: "Once having lived in San Angelo, they are sure to come back."

San Angelo is the financial center of an imposing territory. Its banks are five in number, and in point of assets and financial solidarity may well be pointed to with pride.



*The First and Central National Banks*



*San Angelo National Bank*

There has not been a bank failure in San Angelo in 25 years.



*The Guaranty State Bank*

To adequately finance the enormous sheep, wool, mohair and cattle industry of this country, its agriculture and wholesale and jobbing interests, requires large capital, and bankers of wide experience and discretion.

The combined assets of San Angelo's banks are \$9,000,000.



## The City of San Angelo

There is a current saying in the East that "a city is as good as its hotels." That San Angelo has the finest and most extensive hotel facilities in Western Texas, between a line drawn through Fort Worth and San Antonio on the East and El Paso on the West, will be conceded, as it must be, by every competing town for the location of this school.



THE ST. ANGELUS HOTEL

It is of importance when the parents come to visit the students, that a modern hotel be available.

San Angelo has now no institution of higher education. If this school were located here it would have the undivided support and enthusiastic loyalty of our citizenship. It would be "nurtured as an only child."



THE LANDON HOTEL

Would it not be better to locate this great school away from the competing rivalry of other colleges, and in a community where the *interest* and *loyalty of the citizenship* is absolutely undivided?

San Angelo's leading hotel would do credit to a city the size of Austin.



## *The City of San Angelo*

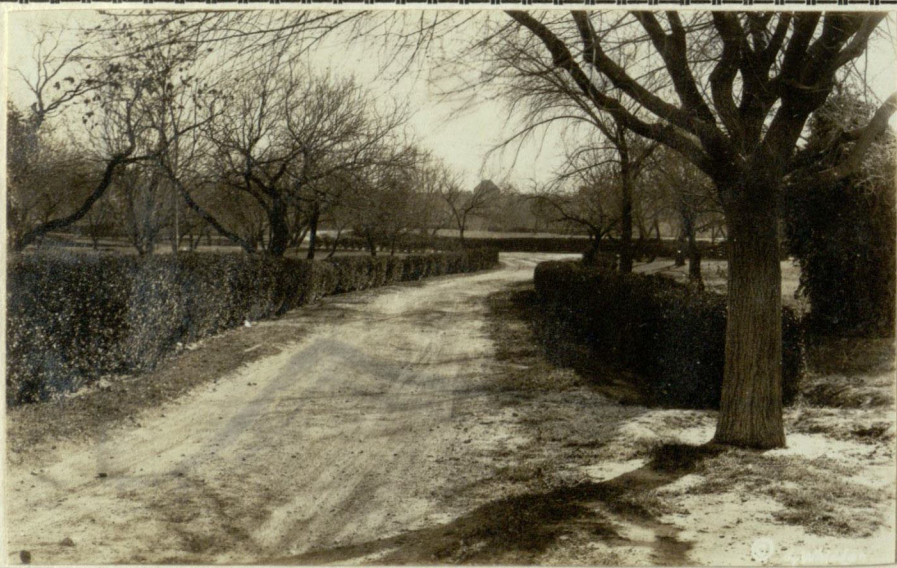
In every respect San Angelo has the attributes of a city. Its business districts bespeak the well planned and ordered town.

In San Angelo's immediate trade territory, and connected with it by rail, lie in Irion, Reagan, Upton, Crockett and Schleicher counties, the larger portion of the State University lands.



*On Chadbourne Street*

If there is any merit in the proposition that the location of the school should be near these lands, San Angelo is the logical site.



*A View in One of the City Parks*

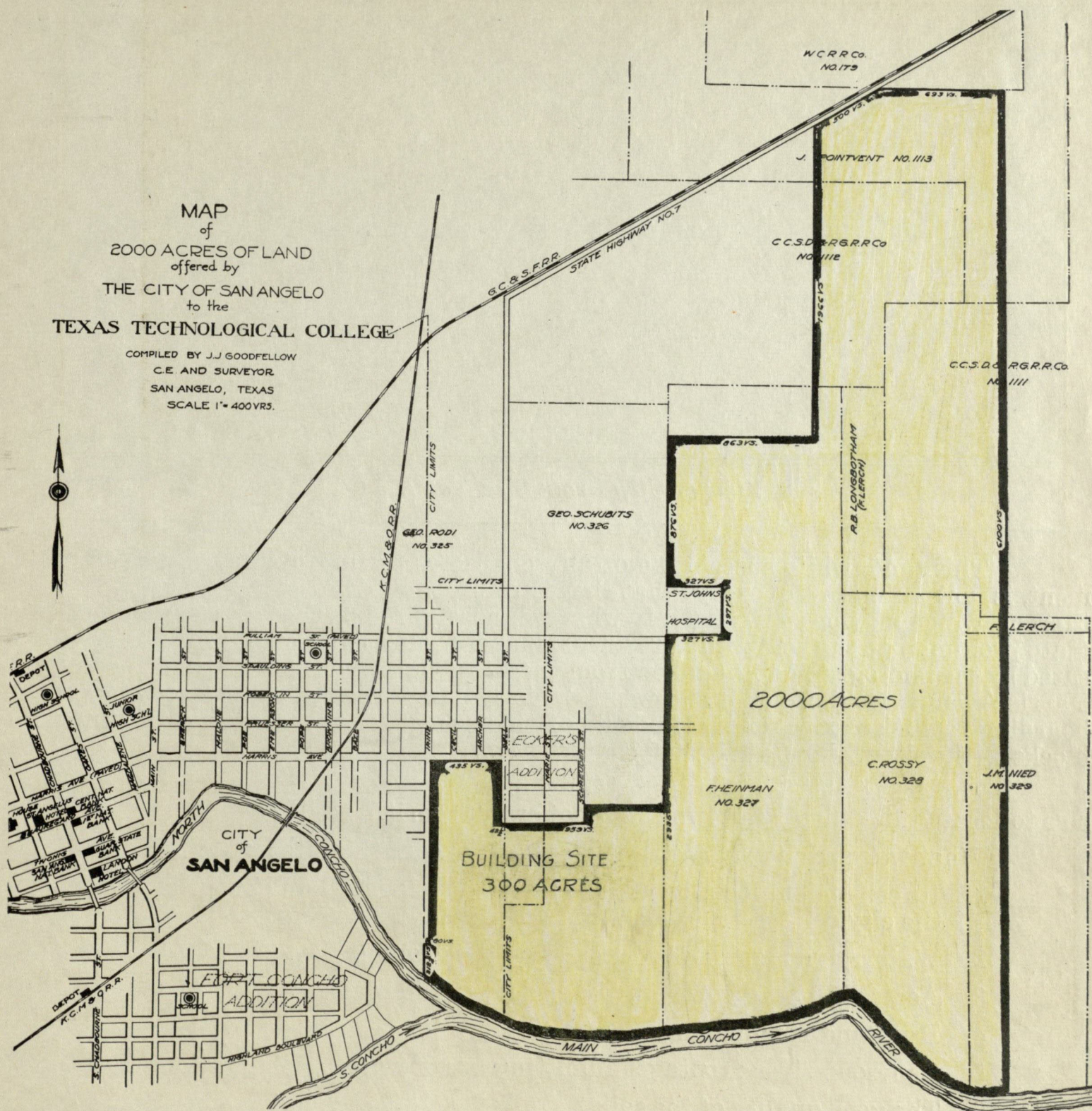
Within a stone's throw of one of the sites offered for this school, are the ruins of old Fort Concho, a fine old government post of former days. The officers' quarters are now utilized as private residences. The post was located here by the government engineers because of the fine and abundant water.

San Angelo is a solid town. Its growth has been upon the sound basis of keeping pace with the adjacent country, and not upon a sporadic "boom" situation.



*Site No. one---The "Johnson Site"*

THIS site consists of 2000 acres immediately in the Eastern portion of the city. The building site fronting on Irene Street, and overlooking the city is fully 40 feet higher than the business and main residential section, and commands a beautiful view of the city. The 300 acres immediately adjoining the city is a beautiful tract of fertile land and all available for building and campus purposes. It has fully two consecutive miles frontage on the Main Concho river, and is only two blocks from a present paved street, and paving will be connected to building site at once, as hereafter referred to.



This site is less than **twelve blocks** from the center of the business district. It immediately adjoins a thickly settled residential district. It already has city water piped on building site in various places. Field-notes and larger plat of site are in supplemental file marked "Exhibit "A."



## *Site No. One---Continued*

With the exception of not exceeding 200 acres it is all first-class tillable land, and the 200 acres fine pasturage property. It is a gently sloping, well-drained terrain of black sandy soil, and will produce any character of crop, vegetation or trees adapted to this climate. It adjoins one of the major state highways, and will be paved entirely through the site, as hereafter more fully referred to. By the construction of a dam on the river at a cost (dependent on number of acres desired to be irrigated), of from \$3,000 to \$10,000, any quantity of it up to at least 300 acres may be irrigated. Electric light and power lines are already on the ground.



*View of City From Site No. One*

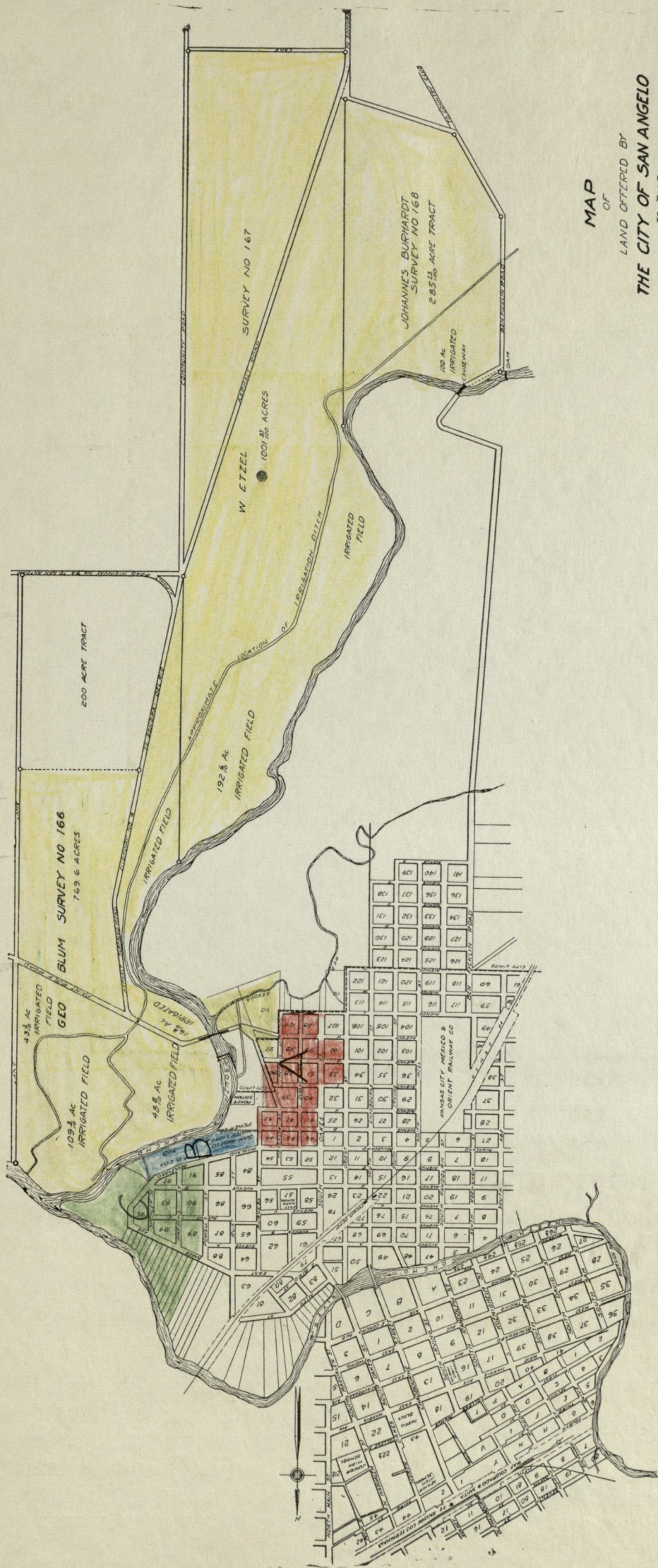
This land, while susceptible of any character of improvement and development, is now unimproved, except that there are probably twelve or fifteen dwellings thereon, which may be converted into whatever use desired by the trustees. Its immediate proximity to the established residential and business section of the town is indicated by the photograph above taken from the site about the corner of Irene Street and Harris Avenue, looking north and west. It is believed that adequate rooming and boarding facilities exist for the students of this school for several years within five blocks of the site without additional construction.

The act of the Legislature establishing this school clearly indicated its desire to locate this school "in town," and not away from it.

What we particularly desire to emphasize about this site is:

1. Its convenient location with relation to residential and business section of the city.
2. Water, light and power already on the ground.
3. Accessibility to town on paved streets and roads.
4. High and commanding elevation.
5. Generous river frontage, admitting use of water for irrigation.
6. The good quality of the soil.
7. Facilities for constructing lake in river for swimming, boating and various water sports.
8. Pecan groves on river for shade and pleasure of student body.
9. The 300 acres of the site nearest the city is all high, and fine for building purposes. It will afford building room for all time to come.





MAP  
OF  
LAND OFFERED BY  
THE CITY OF SAN ANGELO  
TO THE  
TEXAS TECHNOLOGICAL COLLEGE

## Site No. Two-- The "Metcalfe Site"

THIS site consists of the famous "GLENMORE FARM," of 1836 acres, and the lots and blocks connecting with it in the city, and sufficient additional acreage to make 2000 acres, located south and southeast from the city on the South Concho river. *We believe this to be the very finest and most beautiful farm in Western Texas.* In the building site, on the west side of the river is about 56 acres, including streets and alleys through the site which will be vacated if this site is selected. City water is already piped everywhere it could be wanted on the building site, and a pipe line also extends across the river for more than a mile through the farm. The building site here also is high, and is located with respect to the business district and residential section practically as conveniently as site No. One. A paved county road runs for three miles through the land, and an intersecting county road to Paint Rock will be at once paved through the land. The city will connect building site or administration building with city paving, (now only three blocks away), wherever desired, as hereafter referred to.



## *Site No. Two---Continued*

The Glenmore Farm has always been one of the show places of this section. About 450 acres are under irrigation by its own gravity ditch from a dam on the South Concho river located about five miles above the city. It would cost today not less than \$30,000.00 to construct this dam alone, and all riparian rights are fully established both under the Board of Water Engineers Act, at common law, and by limitation, and no question as to priority of rights to the use of water by this property is asserted by anyone. This dam backs up a body of water in the river nearly three miles long with a superficial water area of 135 acres, and in varying depths from 35 feet maximum. *This dam, ditch, rights-of-way and riparian rights are a part of the property, and will be conveyed with it.*



*Lake Scene on Metcalfe Dam, South Concho River*

This is the most beautiful body of water on the Conchos, and its value to a school of this character can not be overestimated.

This property fronts four miles on the South Concho river, and has on it literally hundreds of fine pecan trees, many of them already top-worked to soft shelled varieties.

The land offered here not only has 450 acres under irrigation, but at least 300 more acres are susceptible of irrigation. It also has a fine dry land farm above the ditch, and all but probably 400 acres is fine tillable land. The river land under irrigation is black and fertile in the extreme and the upland a good quality of black sandy land. Leading from the building site across the river is a fine paved road and a newly constructed concrete and steel bridge above any overflow or high water ever known in this section. The products of this farm can move on paved roads and streets to the city and railroad, rain or shine, any day in the year. This farm has its own gin, silos, barns, and is in every way a highly improved property.



## *Site No. Two---Continued*

We believe without any reservation whatever that no other locality in Texas can or will offer such a valuable and beautiful site as this for this great school, and, needless to say, \$150,000.00 could not buy a site and property like this, but San Angelo wants this school, and what the State has to buy with will be supplemented, as hereinafter proposed, by this city with sufficient money, to get the *very best*, for a school that will be the pride of this city, and we believe, in the years to come, the common pride of the State.



*A Farm Scene on This Very Tract of Land*

This photograph vividly shows a small area of this great property, and the thickly set shocks of grain grown under irrigation show the magic effect of a combination of Concho water and Western sunshine.

But to be fully appreciated this property must be seen, and enough, we trust, has been said to at least justify your honorable committee, to visit us and see at first hand what we have to offer.

Incidentally, it might be said that on this land is a wonderful rock quarry, where the very finest building stone for every character of building purpose is readily at hand. In addition to this on either of the sites in the river beds can be found gravel in unlimited quantities.

A white print on a larger scale, with field notes of Site No. 2, is in supplemental file marked "Exhibit B."



## *What the County, City and Railroads Will Do.*

---

IT will be observed from the plats of the two sites offered that Site No. 1 adjoins the Santa Fe right-of-way, and is in two blocks of the Orient right-of-way. The building location on Site No. 2 is but about three blocks from the Orient railway, and as observed from Exhibit C in the supplemental file, immediate switching facilities can be provided on either site.

Tom Green County is now engaged in extensive road building work, and as shown by the file marked Exhibit D a resolution has already been adopted unanimously by the Commissioners' Court of the county assuring the vacation of any undesired roads through either site, the paving of the principal roads through them, and such changes in road locations as will best fit the plans of the Board of Trustees.

Similarly, the City Commission of San Angelo, by appropriate resolution, shown in the supplemental file as Exhibit E, proposes to vacate all streets and alleys through either of the sites so the continuity of the acreage shall not be impaired, and to pave connections from the college buildings to already paved streets in the city.

Although perhaps superfluous to say, this city is in position upon acceptance of any of the several propositions made herein, to deliver merchantable title, free of incumbrance, to any or either site offered, and should condemnation proceedings be required, (which will not be, barring possibly in case of a few isolated lots embraced in the building sites where owners can not be located), a sufficient sum in cash will be immediately deposited in any bank anywhere designated by the locating board, to cover awards and all costs of condemnation.



## Let Us Summarize

**W**E believe this school is going to be scientifically located. Considering the fact that this Board is composed largely of educators, we assume that the advantages offered by each location will be tabulated and graded, and this is a condition which San Angelo, *of all locations in the State*, particularly invites.

We do not know upon what basis this grade will be made and we trust that we will be pardoned if we suggest a topical division upon the basis of which we challenge comparison with any competing city.

- |   |  |   |        |      |        |       |        |       |        |       |  |
|---|--|---|--------|------|--------|-------|--------|-------|--------|-------|--|
| <b>FIRST:</b> Altitude and Climate -----  | {  | Low humidity, cool breezes. An altitude too high for malaria and not high enough to injuriously affect the heart's action.<br><br>Climate, the happy mean between that of the Rio Grande and upper portions of the Panhandle. Energizing, but not enervating.     |        |      |        |       |        |       |        |       |  |
| <b>SECOND:</b> Geographical Location -----  | {  | Central Location, and accessible by rail and good roads, with relation to designated section, and with relation to State at large.  |        |      |        |       |        |       |        |       |  |
| <b>THIRD:</b> Citizenship of the Town -----   | {  | Predominantly native-born American.<br>No conflicting interests in other Colleges.<br>Undivided support and loyalty.  |        |      |        |       |        |       |        |       |  |
| <b>FOURTH:</b> Location of proposed site with relation to business and residential section of the city:                               | {  | Absolutely convenient.  |        |      |        |       |        |       |        |       |  |
| <b>FIFTH:</b> Relation of City to the principal raw materials of Texas, the study and fabrication of which is the school's chief aim: | { <table border="0" style="display: inline-table; vertical-align: middle;"> <tr><td>Cotton</td></tr> <tr><td>Grains</td></tr> <tr><td>Wool</td></tr> <tr><td>Mohair</td></tr> <tr><td>Hides</td></tr> <tr><td>Pecans</td></tr> <tr><td>Sheep</td></tr> <tr><td>Cattle</td></tr> <tr><td>Goats</td></tr> </table> | Cotton  | Grains | Wool | Mohair | Hides | Pecans | Sheep | Cattle | Goats | Every product of both dry land agriculture and irrigation. |
| Cotton  |  |   |        |      |        |       |        |       |        |       |  |
| Grains  |  |   |        |      |        |       |        |       |        |       |  |
| Wool  |  |   |        |      |        |       |        |       |        |       |  |
| Mohair  |  |   |        |      |        |       |        |       |        |       |  |
| Hides   |  |   |        |      |        |       |        |       |        |       |  |
| Pecans  |  |   |        |      |        |       |        |       |        |       |  |
| Sheep   |  |   |        |      |        |       |        |       |        |       |  |
| Cattle  |  |   |        |      |        |       |        |       |        |       |  |
| Goats   |  |   |        |      |        |       |        |       |        |       |  |
| <b>SIXTH:</b> Water -----   | {  | Springs and running streams—not ponds.<br>Availability for every purpose.<br>Quality, unsurpassed anywhere.<br>Quantity, practically unlimited.<br>For Irrigation.<br>For student recreational opportunities.   |        |      |        |       |        |       |        |       |  |
| <b>SEVENTH:</b> Soil and Terrain -----  | {  | Running streams.<br>Hills, plains, valleys, trees.<br>Diversity of soils, black, red, sandy.  |        |      |        |       |        |       |        |       |  |
| <b>EIGHTH:</b> The prospective student morale:  | {  | Churches and Schools.<br>Parks and playgrounds.<br>Opportunities for healthful and interesting sports.<br>Absence of oil development and relative freedom from manufacturing industries, and their contaminating influences.                                      |        |      |        |       |        |       |        |       |  |
| <b>NINTH:</b> Health -----  | {  | Freedom from malarial influences.<br>Rigid enforcement of sanitary ordinances.<br>Immunity from contraction of disease.<br>Chlorinated and filtered drinking water from springs.<br>A place where sick people get well, but where well people do not become sick. |        |      |        |       |        |       |        |       |  |
| <b>TENTH:</b> The City -----  | {  | Large enough to be an asset and benefit to the school.<br>Modern and well-governed.<br>Paved, lighted and clean.<br>Homes where the occupants are the owners.   |        |      |        |       |        |       |        |       |  |



## *Let Us Summarize*

It is hardly conceivable that any proposed location for this school can in the very nature of things qualify with a 100% grade, but if such is possible, we believe that San Angelo, nearer than any other proposed location for the school, will be and ought to be given this remarkable grade.



*The County Court House and Lawn*

And though San Angelo would prize this school above any other possession, we stand squarely upon the superior merit of our location for this institution, and confidently challenge comparison with any other proposed site in the territory designated for the establishment of the school.



SAN ANGELO'S  
PROPOSITIONS

SUBMITTED ON

SITE No. 1

SITE No. 2

SITE No. 3



## SITE NUMBER ONE

---

1st: The City of San Angelo proposes to deliver merchantable title to Site Number One of 2,000 acres described in this Brief to such repositories of title as may be designated by the Locating Board for the sum of \$30,000.00, (the actual cost of the land to the city being \$147,800.00, the City contributing in cash \$117,800.00 towards the purchase price); and,

2nd: To extend the paving (now only three blocks away) in the city limits to the site designated by the Board of Trustees for the administration building and to connect such Administration Building with the nearest paved county road by a paved road; and,

3rd: To have vacated by the Commissioners' Court of Tom Green County and City Commission of San Angelo, any or all streets, alleys, roads or public ways through the 2,000 acres, (See Resolutions Commissioners' Court and City Commission, Exhibits "D" and "E"); and,

4th: To provide a switch from either the Gulf, Colorado & Santa Fe track or the Kansas City, Mexico & Orient Railway Company track into the property for the use of the College, See Exhibit "C").

Water mains, pipes, electric light and power and telephone poles and wires are already on the site offered at any place which would be selected for the administration or other buildings of the school.



## SITE NUMBER TWO

1st: To deliver merchantable title to the 1836 acres contained in the Glenmore Farm property, (Shown in yellow on map in this Brief and larger scale map, Exhibit "B"), and to either building site "A," (Shown in red on map), plus tract "B," (Shown in blue on map), and being 66 acres, or building site "C," (Shown in green on map), plus tract "B," (Shown in blue on map), and being 107 acres, and sufficient additional acreage, east of Glenmore Farm to make in the aggregate 2,000 acres for the sum of \$150,000.00.

The cost of such property to the City being:

	Cost	Acres
Glenmore Farm .....	\$183,600.00	1836
Tracts "A" and "B" .....	71,000.00	66
Additional land .....	8,100.00	98
<b>TOTALS</b> .....	<b>\$262,700.00</b>	<b>2000</b>

—or if building sites "B" and "C" are selected:

Glenmore Farm .....	\$183,600.00	1836
Tracts "B" and "C" .....	87,100.00	107
Additional land, if required .....	4,725.00	57
<b>TOTALS</b> .....	<b>\$275,425.00</b>	<b>2000</b>

(The city agreeing to contribute in cash to supplement the \$150,000.00 fund available to the locating board, the additional amount required to acquire either site of 2,000 acres); and,

2nd: To pave to the location determined upon for the Administration building, a connection with paving on Avenue "D"; (paved already to within two blocks of the building site), and further, to pave a connection with State Highway Number Four, a county paved road on the south and west of the building site, so as to provide two paved streets to the business section of the City; and,

3rd: To pave the Paint Rock Road to a connection with said State Highway No. 4 entirely through the Glenmore Farm, thus providing two county paved roads through the property; and,

4th: To deliver title to the Metcalfe dam, ditches, canals and rights-of-way and all water rights appurtenant thereto, as more fully described in the brief; and,

5th: To provide a switch into the building site from the Kansas City, Mexico & Orient track; and,

6th: To have vacated by the Commissioners' Court and City Commission any or all streets, alleys, roads or public ways through the 2,000 acres, other than county paved roads.

Water mains and connections and electric light, power and telephone poles and wires are already on either building site at any place at which the buildings of the college would be located.



## SITE NUMBER THREE

---

The papers in connection with this site are shown in supplemental file "O" and should this site be desired, merchantable title to the 2,000 acres there described, will be provided for \$ 60,000.<sup>00</sup>/<sub>100</sub> -----, in addition to which all undesired streets, alleys or roads through the same would be vacated and switch connection provided to the Gulf, Colorado & Santa Fe Railway track.

Title can be delivered to either site as fast as abstracts can be examined. Options have been secured on practically all of the lands contained in either site at this date, (April 20th, 1923), but should a few lots embraced in either building site be not obtainable by purchase on account of non-residence of, and inability to locate, the owner, deposit of cash will be made in any bank designated by the locating board to cover any probable awards and costs of condemnation, or the local committee will, in the name of the College, condemn the property and pay the awards and deliver title immediately upon the conclusion of such proceeding.

### GENERALLY

The requisite amount in cash to supplement the funds available to the locating board for purpose of purchasing sites, necessary under either proposition here made, has already been raised and is available for deposit in any bank or banks which may be designated by the locating board on fifteen days notice.

Abstracts of title will be delivered to all properties subject to approval by the Attorney General or any other legal agency designated by the Board to pass on titles.

Respectfully submitted,

Wm. Humphreys

Chairman of Local Committee



## *The Supplemental File*

---

It would have been tedious to attempt in this brief the detail of information which may be marshaled in support of what we have intended by this document as purely direct and concise statements of fact. But should more detailed information than that herein given be required, or verification of facts stated be desired, we respectfully refer to the supplemental file in connection with this brief. The supplemental exhibits are:

Exhibit A—Large scale map of Site No. 1, and field notes.

Exhibit B—Large scale map of Site No. 2, and field notes.

Exhibit C—Relating to switching facilities from railroad to sites.

Exhibit D—Certified copy order of Commissioners' Court, relating to roads and paving.

Exhibit E—Certified copy order of City Commission relating to streets and paving.

Exhibit F—Water supply: Report by Gibb Gilchrist, (C. E. U. of T), County Engineer

Exhibit G—Well water supply: Report by Dr. Beede, (T. U.). (Certified copy).

Exhibit H—San Angelo's public utilities, by M. F. Treadwell, Supt. San Angelo Water, Light & Power Co.

Exhibit I—Report of Physicians and Medical Society on health conditions at San Angelo.

Exhibit K—Copy of lecture of Dean Kyle, (A. & M.), on pecan industry.

Exhibit L—Tabulations of population verifying population maps and statistics in this brief. By E. I. Jackson, City Manager.

Exhibit M—Offer and schedule of rates for water, light and power.

Exhibit N—Miscellaneous documents and papers.

Exhibit O—Description of Site No. 3.

The local committee, it is needless to say, stand ready to furnish any other or further information desired, and will cheerfully do so.



## Endorsements:

---

**N**ATURALLY, if the school is to be located on the merits of the sites offered, this Board will not be largely influenced by endorsements. Still, we consider it not inappropriate just here to call attention to the numerous endorsements which this city has received for the location of this school.

On March 23rd, 1923, a few days subsequent to the general meeting at Brady at which representatives of the San Antonio Chamber of Commerce were present, this city received the unanimous endorsement of the San Antonio Chamber of Commerce. When publicity was given to this endorsement, there was an immediate protest from numerous other towns nearer San Antonio than San Angelo, and the San Antonio Chamber of Commerce in deference to their protests and for the purpose of preserving neutrality, withdrew this endorsement. The withdrawal of the endorsement, however, was based strictly upon the ground of the maintenance of neutrality, and while we concede this great city, between which and San Angelo has always existed and will continue to exist the most friendly relations, the right, for business reasons, to withdraw its endorsement, we nevertheless refer to the matter as evidencing really where San Antonio's heart is.

The following telegrams of endorsement in the files of the Local Board of City Development tell their own story of the opinions of neighboring cities.

### *From Marfa, Presidio County*

March 31st, 1923: This is to inform you that we heartily endorse San Angelo for the location of the Technological College.

(Signed) N. L. CASNER,  
President Chamber of Commerce.

### *From Terrell County*

April 7th, 1923: The City of Sanderson, through her Chamber of Commerce, in session today, goes on record unanimously endorsing the City of San Angelo for the location of the Texas Technological College and pledge you our support.

(Signed) JOE KERR.

### *From Sutton County*

March 31st, 1923: In behalf of Sonora Commercial Club, including unanimous citizenship of Sutton County, we heartily endorse San Angelo for the location of the Texas Technological College. We consider it the logical place in West Texas by reason of its healthy climate, abundance of pure water and irrigation land. Also in the midst of a large amount of dry farming land and in close proximity to, in fact almost inside of, the largest livestock producing country in Texas, which will enable the students to be close to the actual work of all these industries.

(Signed) W. L. ALDWELL, Chairman,  
Sonora Commercial Club.



### ***From Pecos County***

February 20th, 1923: In behalf of citizenship of Fort Stockton endorse San Angelo as location for West Texas Technological College.

(Signed) CHAMBER OF COMMERCE.

### ***From Reagan County***

February 20th, 1923: Reagan County is in hearty co-operation with San Angelo. Command us at any time we can be of service.

(Signed) R. THEIS, Chairman,  
Chamber of Commerce.

### ***From Brewster County***

February 20th, 1923: Chamber of Commerce and citizens of Alpine glad to use this opportunity to give most cordial endorsement to your city as logical location for Texas Technological College. Believe you possess every advantage necessary to make this school complete success from its beginning. If we can assist you in any way, use us.

(Signed) BREWSTER COUNTY CHAMBER OF COMMERCE,  
G. W. BAINES, JR., President.

### ***From Val Verde County***

February 21st, 1923: The Del Rio Chamber of Commerce, voicing the sentiment of the citizenship of Del Rio and Val Verde County, does hereby most heartily endorse the City of San Angelo, Texas, for the location thereat of the Technological College of Texas, and earnestly urge the selection of San Angelo for the location of said College.

(Signed) DEL RIO CHAMBER OF COMMERCE,  
By Board of Directors.

### ***From Crockett County***

February 20th, 1923: At a mass meeting called by the Ozona Chamber of Commerce this afternoon San Angelo was unqualifiedly endorsed as the proper location for the New Texas Technological College, being centrally located on the dividing line between the farming country to the north and east and the great cattle, sheep and goat producing section to the west and south and with its inexhaustible supply of fresh spring water available from three sources. Its fertile soil and healthful climate we think make it the logical and ideal place for the location of the college.

(Signed) OZONA CHAMBER OF COMMERCE.

In addition to the foregoing, the Sheep & Goat Raisers' Association of Texas, consisting of practically every raiser of sheep and goats in the territory extending from San Angelo to San Antonio and the Rio Grande and to El Paso on the West, through its Executive Committee at Sanderson on February 20th, unanimously endorsed San Angelo as the logical location for this school.

Endorsements have also been received by the representative business organizations of Irion and Sterling Counties, and numerous letters of endorsements have been received from prominent citizens in different sections of the State, praising San Angelo as the logical and desirable location for this school.

Every county in the designated section for this school is fully cognizant of San Angelo's superior attractions.



# *Undivided Support and Loyalty*

---

## *A Pledge and a Prophecy*

And now, gentlemen, we have presented our case, and after thanking you most sincerely for your patient consideration of our claims,

### *We Pledge,*

if this school is located here to bestow upon it so much of loyalty, support and enthusiastic devotion that everywhere it will be known as the "pride of San Angelo," and the boast of this great State, and

### *We Prophecy*

that with this undivided support, and the favorable conditions which will surround it here, this school will more than meet the vision of its proponents, as a great technological institute from whose portals in exceeding numbers as the years speed by, will come those creative young men and women of ideals, so trained in specific and scientific research, in literature and art, as to represent the highest and most useful types of citizenship in our broad land.

---

*Again, WE THANK YOU*



## Concholand



*AST land of plains where scented breezes blow,  
Stretching from sunrise's gleam to sunset's glow,  
Of grand old live-oaks whose tremulous boughs  
Whisper echoes of Indian pow-wows,  
Valleys interlaced with rippling streams,  
With their shaded nooks of a thousand dreams,  
Gay the flowers bedecking the landscape  
In this land of sunshine and purpling grape.  
This is Concholand.*

*Land of peaceful homes in valley and plain  
Of corn and cotton and the waving grain,  
Land of the cactus and the far-flung ranch,  
With white-faced cattle on every branch,  
Land of the snow-white flocks of goats and sheep  
Covering the hills with the sun's first peep,  
Blue-bonnet land where the tall pecan grows,  
And the mocking-bird sings to the open'ng rose.  
This is Concholand.*