

CALLOUT	COMMON NAME	BOTANICAL NAME	SIZE	CONT/ BABY	SPACING	REMARKS	QTY.
ASH TX	TEXAS ASH	FRAXINUS TEXENSIS	3" CAL	BABY CONT.	PER PLANS	8" HT X 3" SPR	X
CYP BALD 8	BALD CYPRESS	TAXODIUM DISTICHUM	6" CAL	CONT.	PER PLANS	20" HT, X 8" SPR.	X
ELM CED 6	CEDAR ELM	ULMUS CRASSIFOLIA	6" CAL	BABY OR NURS.	PER PLANS	20" HT X 6" SPR	X
OAK CHINQ	CHINGUAPIR OAK	QUERCUS MUEHLBERGII	6" CAL	CONT.	PER PLANS	16" HT X 6" SPR	X
OAK MONT	MONTSERREY OAK	QUERCUS POLYMORPHA	3" CAL	CONT.	PER PLANS	8" HT X 3" SPR	X
OAK TX RED 8	TEXAS RED OAK	QUERCUS TEXANA	6" TOTAL CAL	CONT.	PER PLANS	18" HT X 8" SPR, MULTH-TRUNK	X
SYC MEM	TEXAS SYCAMORE	PLATANUS MEXICANA	6" CAL	BABY CONT.	PER PLANS	20" HT X 3" SPR	X

CALL OUT	COMMON NAME	BOTANICAL NAME	SIZE	CONT./ BAG	SPACING	REMARKS	QTY.
BUCK MEW	MEXICAN BUCKEYE	UNGUADA SPECIOSA	10 GAL.	CONT.	PER PLANS	5' HT.	X
DESERT WIL	DESERT WILLOW	CHILIPIS LINEARIS	3 GAL.	CONT.	PER PLANS	5' HT.	X
EVE NECK	EVE'S NECKLACE	SEPHORA AFFINIS	10 GAL.	CONT.	PER PLANS	6' HT.	X
HOLLY POS	POSSUMHAW HOLLY	ILEX DECIDUA (FEMALE)	30 GAL.	CONT.	PER PLANS	6' HT.	X
MT LAUR 6	TEXAS MOUNTAIN LAUREL	SEPHORA SECUNDIFLORA	6' HT	CONT/ BAG	PER PLANS	6' HT.	X
MX PLUM	MEXICAN PLUM	PRUNUS MEXICANA	30 GAL.	CONT.	PER PLANS	5' HT.	X
REDBUD TX	TEXAS REDBUD	CERCIS TEXENSIS	20 GAL.	CONT.	PER PLANS	6' HT.	X
TX PERS	TEXAS PERISMOM	DIOSPYROS TEXANA	30 GAL.	CONT.	PER PLANS	5' HT.	X

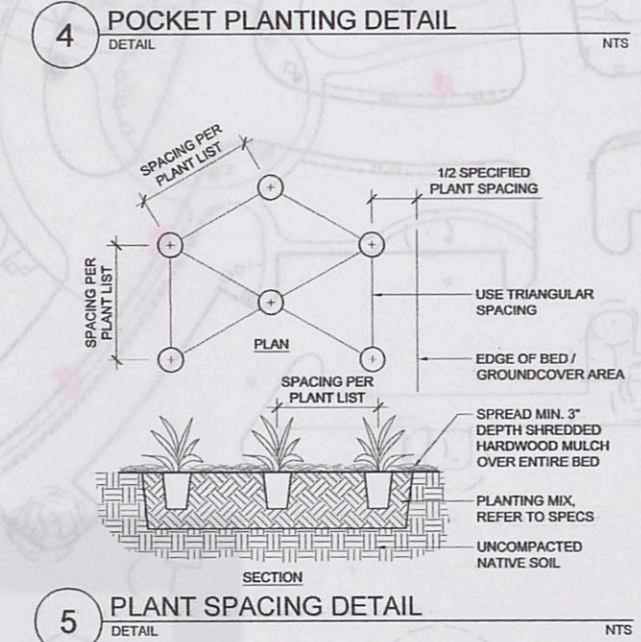
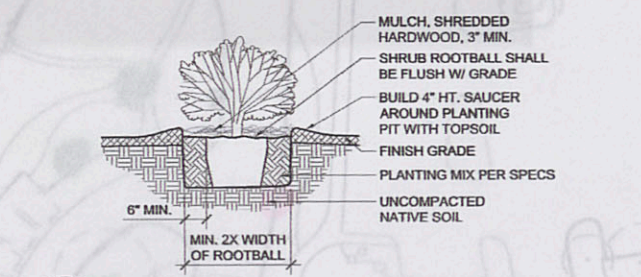
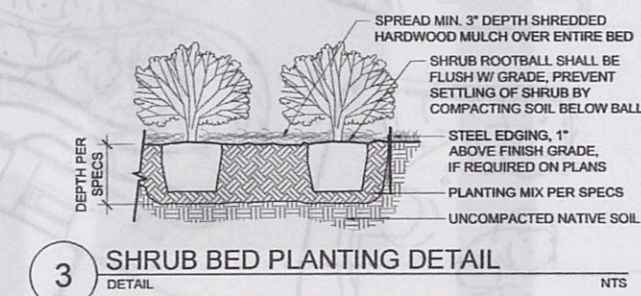
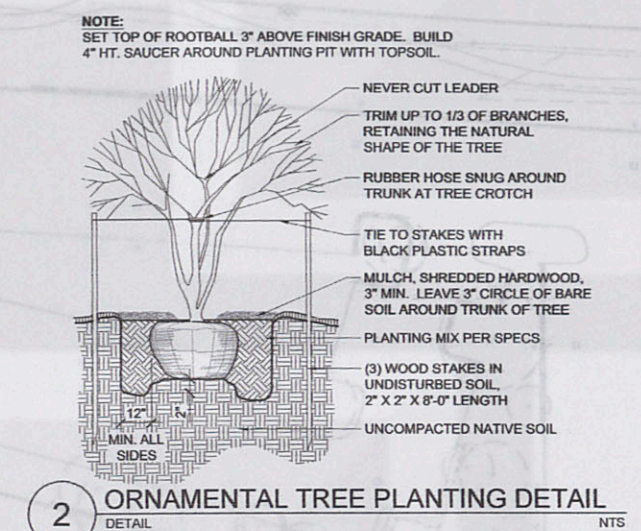
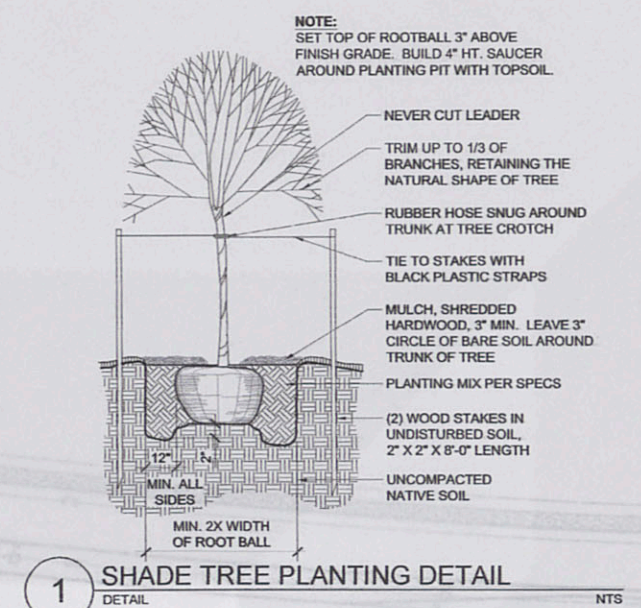
CALLOUT	COMMON NAME	BOTANICAL NAME	SIZE	CONT/ BAG	SPACING	REMARKS	QTY.
AGARTIA	AGARTIA	MAHONIA TRIFOLIOLATA	5 GAL.	CONT.	4' O.C.	20' HT X 18" SPR	X
AMER BB	AMERICAN BEAUTYBERRY	CALICARIA AMERICANA	5 GAL.	CONT.	4' O.C.	2' HT X 20" SPR	X
PRIDE BARB	PRIDE OF BARBADOS	POINCIANA PULCHERRIMA LINNEUS	5 GAL.	CONT.	PER PLANS	3' HT X 2" SPR SPECIMEN PLANT	X
CORALBEAN	CORALBEAN	ERYTHRINA HERBACEA	5 GAL.	CONT.	5' O.C.	2'-0" HT X 2'-0" SPR	X
PALMETTO	DWARF PALMETTO	SABAL MINOR	5 GAL.	CONT.	3' O.C.	18" HT X 18" SPR	X
ELBOW	ELBOW BUSH	FORESTIERA PUBESCENS	5 GAL.	CONT.	8' O.C.	30" HT X 2" SPR	X
ESPERANZA Y	ESPERANZA, YELLOW	TECOMA STANS VAR. ANGUSTATA	5 GAL.	CONT.	4' O.C.	3' HT X 2" SPR	X
SUMAC EVER	EVERGREEN SUMAC	RHUS VIRENS	10 GAL.	CONT.	5' O.C.	3' HT X 3" SPR	X
FATISA	FATISA	FATISIA JAPONICA	5 GAL.	CONT.	4' O.C.	18" HT X 2" SPR	X
SUMAC FRAG	FRAGRANT SUMAC	RHUS AROMATICA	5 GAL.	CONT.	5' O.C.	2' HT X 2" SPR	X
SENNA FLOW	FLOWERING SENNA	CASSIA CORYMBOSA	10 GAL.	CONT.	6' O.C.	4' HT X 2'-0" SPR	X
FRAG MIM	FRAGRANT MIMOSA	MIMOSA BREALIS	5 GAL.	CONT.	5' O.C.	24" HT X 18" SPR	X
KID WOOD	KIDNEYWOOD	EYSENHARTIA TEXANA	5 GAL.	CONT.	6' O.C.	4" HT X 2'-0" SPR	X
ROSE MUTA	MUTABILIS ROSE	ROSA 'MUTABILIS'	5 GAL.	CONT.	6' O.C.	6' HT X 6" SPR	X
VIB RUSTY	RISTY BLACKHAW VIBURNUM	VIBURNUM RUFIODULUM	5 GAL.	CONT.	6' O.C.	3' HT X 6" SPR	X
WAX MTR	WAX MYRTLE	MORELLA CERIFERA	5 GAL.	CONT.	PER PLANS	3' HT X 2" SPR	X
TX SAGE	TEXAS SAGE	LEUCOPHYLLUM FRUTESCENS	5 GAL.	CONT.	4' O.C.	2' HT X 2" SPR	X
BARB JAP	JAPANESE BARBERY	BERBERIS THUNBERGII 'ATROPURPUREA'	3 GAL.	CONT.	3' O.C.	18" HT X 18" SPR	X
BICOLOR	BICOLOR IRIS	DIETES BICOLOR	1 GAL.	CONT.	2' O.C.	18" HT X 14" SPR	X
DALEA BL	BLACK DALEA	DALEA FRUTESCENS	3 GAL.	CONT.	3' O.C.	18" HT X 18" SPR	X
FIREBUSH	FIREBUSH	HAEMELA PATENS	5 GAL.	CONT.	4' O.C.	X	X
FLAME AC	FLAME ACANTHUS	ANISACANTHUS QUADRIFIDUS VAR. VIRGATIS	5 GAL.	CONT.	3' O.C.	18" HT X 18" SPR	X
SAGE MAJ	MAJESTIC SAGE	SALVIA GUARANITICA	5 GAL.	CONT.	3' O.C.	18" HT X 18" SPR	X
MEX OREG	MEXICAN OREGANO	POLOMINTHA LONGIFOLIA	3 GAL.	CONT.	3' O.C.	18" HT X 2" SPR	X
TURKS MEX	MEXICAN TURKS' CAP	MALVAEUSUS ABOREUS 'MEXICANUS'	1 GAL.	CONT.	3' O.C.	9" HT X 12" SPR	X
ROCK ROSE	ROCK ROSE	PARVONIA LASIOPETALA	1 GAL.	CONT.	2' O.C.	12" HT X 12" SPR	X
SAGE CHERRY	CHERRY SAGE	SALVIA GREGGII	1 GAL.	CONT.	2' O.C.	12" HT X 12" SPR	X
LANT TX	TEXAS LANTANA	LANTANA HORRIDA	1 GAL.	CONT.	4' O.C.	15" HT X 12" SPR	X
ROSMARY UP	ROSEMARY UPRIGHT	ROSEMARINUS OFFICINALIS	5 GAL.	CONT.	3' O.C.	18" HT X 18" SPR	X
SAGE MEX	MEXICAN BUSH SAGE	SALVIA LEUCANTHA	5 GAL.	CONT.	3' O.C.	2' HT X 18" SPR	X
DAISY CC	COPPER CANYON DAISY	TAOETES LEMONII	1 GAL.				

CALLOUT	COMMON NAME	BOTANICAL NAME	SIZE	CONT. S&B	SPACING	REMARKS	QTY.
MUHL.Y BAM	BAMBOO MUHL.Y	MUHLENERGIA DUMOSA	5 GAL.	CONT.	3' O.C.	2' HT X 2' SPR	X
MUHL.Y GULF	GULF COAST MUHL.Y	MUHLENERGIA CAPILLARIS	5 GAL.	CONT.	2.5' O.C.	20" HT X 20" SPR	X
SEA OATS	INLAND SEA OATS	CHASMANTHIUM LATIFOLIUM	1 GAL.	CONT.	2' O.C.	10" HT X 10" SPR	X
MUHL.Y BIG	BIG MUHL.Y	MUHLENERGIA LINDEMAYERI	5 GAL.	CONT.	2.5' O.C.	18" HT X 20" SPR	X
BSTEM BIG	BIG BLEMSTEM	ANDROPOGON GERARDII	1 GAL.	CONT.	3' O.C.	9" HT X 9" SPR	X
BUNNY GRASS	LITTLE BUNNY GRASS	PENNISETUM ALOPECUROIDES "LITTLE BUNNY"	1 GAL.	CONT.	18" O.C.	9" HT X 9" SPR	X
MEX FEATHER	MEXICAN FEATHER GRASS	STIPA TENUISSIMA	1 GAL.	CONT.	18" O.C.	12" HT X 10" SPR	X
MISC STRICT	MISCANTHUS STRICTUS	MISCANTHUS SINENSIS "STRICTUS"	5 GAL.	CONT.	3.5' O.C.	2' HT X 2' SPR	X
MUHL.Y DEER	DEER MUHL.Y	MUHLENERGIA RIGENS	5 GAL.	CONT.	2' O.C.	18" HT X 18" SPR	X

CALLOUT	COMMON NAME	BOTANICAL NAME	SIZE	CONT/ B&B	SPACING	REMARKS	QTY.
ARTEMISA	ARTEMISA 'POWIS CASTLE'	ARTEMISA LUDOVICIANA 'POWIS CASTLE'	1 GAL.	CONT.	2' O.C.	12" HT X 12" SPR	X
BLACKFOOT	BLACKFOOT DAISY	MELAMPODIUM LEUCANTHUM	1 GAL.	CONT.	18" O.C.	8" HT X 9" SPR	PER PLANS
RUBINE	RUBINE	RUBINE FRUTESCENS	1 GAL.	CONT.	18" O.C.	10" HT X 12" SPR	PER PLANS
COLUM RED	RED COLUMBINE	AQUILEGIA CANADENSIS	1 GAL.	CONT.	18" O.C.	10" HT X 10" SPR	
RUEL KATIE	DWARF KATIE'S RUELLIA	RUELLIA BRITTONIANA	1 GAL.	CONT.	18" O.C.	6" HT X 6" SPR	PER PLANS
ASTER	FALL ASTER	ASTER OBLONGIFOLIUS	1 GAL.	CONT.	2' O.C.	10" HT X 12" SPR	
DALEA GR	GREGG DALEA	DALEA GREGGII	1 GAL.	CONT.	2' O.C.	4" HT X 12" SPR	PER PLANS
GAYFEATHER	GAYFEATHER	LIATRIS MUCRONATA	1 GAL.	CONT.	15" O.C.	8" HT X 6" SPR	PER PLANS
HIBISC PER	PERENNIAL HIBISCUS	HIBISCUS MOSCHEUTOS 'MUY GRANDE'	5 GAL.	CONT.	3' O.C.	2' HT X 18" SPR	X
SAGE JER	JERUSALEM SAGE	PHLOMIS FRUTICOSA	5 GAL.	CONT.	3' O.C.	18" HT X 18" SPR	
LANT GOLD	NEW GOLD LANTANA	LANTANA SPECIOSA 'NEW GOLD'	1 GAL.	CONT.	2' O.C.	8" HT X 10" SPR	PER PLANS
LANT PURP	PURPLE TRAILING LANTANA	LANTANA MONTEVIDENSIS	1 GAL.	CONT.	2' O.C.	8" HT X 10" SPR	PER PLANS
MT PEA	MOUNTAIN PEA	OREBREXILUM PENDUNCULATUM	4" POT	CONT.	12" O.C.	4" HT X 4" SPR	PER PLANS
MEX MINT	MEXICAN MINT MARGOLD	TAGETES LUCIDA	1 GAL.	CONT.	2' O.C.	12" HT X 10" SPR	X
PIGEON	PIGEONBERRY	RIVINA HUMILIS	1 GAL.	CONT.	2' O.C.	6" HT X 12" SPR	PER PLANS
SKULLCAP	PINK SKULLCAP	SCUTELLARIA SUFRUTICOSA	1 GAL.	CONT.	18" O.C.	X	PER PLANS
VERB PRAR	PRAIRIE VERBENA	VERBENA BIPINNATIFIDA	1 GAL.	CONT.	18" O.C.	6" HT X 12" SPR	PER PLANS
PURP COW	PURPLE COW FLOWER	ECHINACEA PURPUREA	1 GAL.	CONT.	18" O.C.	8" HT X 10" SPR	PER PLANS
RIVER RV	RIVER FERN	THELPTERIS KUNTHII	1 GAL.	CONT.	2' O.C.	12" HT X 12" SPR	PER PLANS
SEDGE BERK	BERKELEY SEDGE	CAREX TUMICOLA	4" POT	CONT.	12" O.C.	X	PER PLANS
TX BETONY	TEXAS BETONY	STACHYS COOCHINEA	1 GAL.	CONT.	2' O.C.	X	PER PLANS
YARROW	YARROW	ACHILLEA SP.	1 GAL.	CONT.	2' O.C.	X	PER PLANS
ZEXMENA	ZEXMENA	WEDELIA TEXANA	1 GAL.	CONT.	2' O.C.	10" HT X 12" SPR	X

CALL OUT	COMMON NAME	BOTANICAL NAME	SIZE	CONT/ BIB	SPACING	REMARKS	QTY.
AGAVE HAR	HARVARD AGAVE	AGAVE HARVARDIANA	5 GAL.	CONT/ BAB	3' O.C.	12" HT X 18" SPR	X
AGAVE HEG	HEGDOGH AGAVE	AGAVE STRICTA	5 GAL.	CONT/ BAB	3' O.C.	12" HT X 18" SPR	X
CANDELLA	CANDELLA	EUPHORBIA ANTISYPHILITICA	3 GAL.	CONT/ BAB	2'-6" O.C.	18" HT X 2'-6" SPR	X
AGAVE SP	CENTURY PLANT	AGAVE AMERICANA	3' HT X 3' SPR	CONT/ BAB	PER PLANS	SPECIMEN PLANT	X
CAF BARREL	GOLDEN BARREL CACTUS	ECHINOCACTUS GRUSONII	3' HT X 3' SPR	CONT/ BAB	PER PLANS	SPECIMEN PLANT	X
MANFREDA	MANFREDA	MANFREDA SP.	3 GAL.	CONT.	2' O.C.	6" HT X 18" SPR	X
GRAS BASK	BASKET GRASS	NOLINA TEXANA	3 GAL.	CONT.	2' O.C.	6" HT X 18" SPR	X
AGAVE PER	PERRY'S AGAVE	AGAVE PARRYI	3 GAL.	CONT.	2' O.C.	6" HT X 18" SPR	X
YUCCA RED	RED YUCCA	HESPERALOE PARVIFLORA	5 GAL.	CONT.	3' O.C.	18" HT X 18" SPR	X
PEAR SANTA	SANTA RITA PRICKLY PEAR	OPUNTIA SANTA-RITA	5 GAL.	CONT.	3' O.C.	18" HT X 18" SPR	X
YUCCA SOFT	SOFT LEAF YUCCA	YUCCA RECURVIFOLIA	5 GAL.	CONT.	3' O.C.	2' HT X 2' SPR	X
PRICKLY SP	SPINELESS PRICKLY PEAR	OPUNTIA SP. "SPINELESS"	5 GAL.	CONT.	3' O.C.	2' HT X 2' SPR	X
SOTOL TL	TOOTHLESS SOTOL	DASYLIRON LONGISSIMUM	5 GAL.	CONT.	4' O.C.	18" HT X 2' SPR	X
AGAVE SOD	SOLID AGAVE	AGAVE BRACOTEOSA	3 GAL.	CONT.	2' O.C.	6" HT X 18" SPR	X
SOTOL TX	TEXAS TEXAS	DASYLIRON TEXANUM	5 GAL.	CONT.	2' O.C.	18" HT X 2' SPR	X
AGAVE THRN	THORN-CRESTED AGAVE	AGAVE UNIVITATA	3 GAL.	CONT.	2' O.C.	6" HT X 18" SPR	X
YUCCA TWIST	TWISTLEAF YUCCA	YUCCA RUPICOLA	1 GAL.	CONT.	2' O.C.	6" HT X 12" SPR	X
AGAVE WEB	WEBER BLUE AGAVE	AGAVE TEQUILANA	3 GAL.	CONT.	2' O.C.	6" HT X 18" SPR	X
YUCCA PALE	PALELEAF YUCCA	YUCCA PALLIDA	1 GAL.	CONT.	2' O.C.	6" HT X 12" SPR	X

CALLOUT	COMMON NAME	BOTANICAL NAME	SIZE	CONT/ B&B	SPACING	REMARKS	QTY.
BUFFALO	BUFFALO GRASS	BUFFALO '609'	N/A	SOLID SOD	N/A	X	PER PLANS
ZOYSIA PAL	ZOYSIA 'PALISADES'	ZOYSIA JAPONICA 'PALISADES'	N/A	SOLID SOD	N/A	X	PER PLANS



1. COMPLETE ALL LANDSCAPE PLANTING FOR RELATED EARTHWORK INCLUDING ALL FENCES, EQUIPMENT AND LABOR. FOR THE LANDSCAPE AREAS SHOWN ON THE DRAWING AND DESCRIBED IN THE SPECIFICATIONS.
2. ALL QUESTIONS SHOULD BE REFERRED TO THE PROJECT LANDSCAPE ARCHITECT.
3. INFORMATION PROVIDED ON THIS PLAN IS GENERAL IN NATURE. DIMENSIONS, LOCATIONS, AND AREAS ARE APPROXIMATE AND SHOULD BE FIELD VERIFIED PRIOR TO CONSTRUCTION.
4. QUANTITIES SHOWN FOR PLANT MATERIALS ARE APPROXIMATE AND CONTRACTOR IS RESPONSIBLE FOR ACTUAL QUANTITIES. CONTRACTOR SHALL VERIFY ALL QUANTITIES FROM THE PLAN AND SHOULD BE FIELD DETERMINED ACCORDING TO THE GIVEN SPACING AND FIELD CONDITIONS. DISCREPANCIES BETWEEN FIELD CONDITIONS AND THE PLAN SHALL BE THE CONTRACTOR'S RESPONSIBILITY. CONTRACTOR SHALL VERIFY ALL LANDSCAPE ARCHITECT PRIOR TO INSTALLATION.
5. BY BIDDING, THE CONTRACTOR ACKNOWLEDGES THAT HE/SH/IT IS SATISFIED BY THE INFORMATION AS TO THE NATURE AND LOCATION OF THE WORK AND TO THE QUALITY OF SURFACE AND SUBSURFACE MATERIALS OR OBSTACLES IN/AS FAR AS THIS INFORMATION RELATES TO THE NATURE AND LOCATION OF THE WORK. CONTRACTOR'S FAILURE BY THE CONTRACTOR TO ACCOUNT HIMSELF/HERSELF WITH THE AVAILABLE INFORMATION WILL BE THE CONTRACTOR'S RESPONSIBILITY. CONTRACTOR SHALL ACCEPT THE PROPERLY THE DIFFICULTY OR COST OF SUCCESSFULLY PERFORMING THE WORK AS DESCRIBED.
6. THE LOCATION OF ALL LANDSCAPING MUST BE COORDINATED WITH THE INSTALLATION OF RELATED IRRIGATION, SITE WORK, LIGHTING, SITE SIGNAGE AND GRADING.
7. UNLESS SPECIFICALLY NOTED, INSTALL ALL MASSED PLANTING UTILIZING EQUALIZER PLANTING. SPACING SHALL BE 12" ON CENTER. UNLESS SPECIFICALLY NOTED, PLANTING BETWEEN MULCHED AREAS AND GRASS. EDGING NEED NOT BE INSTALLED BETWEEN CURBS OR WALLS AND LANDSCAPING. CONTRACTOR SHALL BE RESPONSIBLE FOR PROTECTING ALL EXISTING PLANT MATERIALS UNDER ALL TREES. DO NOT INSTALL OTHER EARTHWORK OR VEGETATION ANYWHERE IN THE SAUNDER'S ANOTHER PLANT.
8. TURF AREAS SHALL BE MULCHED WITHIN THE SOIL SAUCERS.
9. PLANT MATERIAL AND LAYOUT MUST BE APPROVED BY THE LANDSCAPE ARCHITECT PRIOR TO INSTALLATION.
10. ALL IDENTIFICATION TAGS PROVIDED BY GROWERS AND PLACED ON TREES AND SHRUBS SHALL REMAIN ON TREES THROUGH THE PUNCHLIST INSPECTION. TAGS ARE TO BE REMOVED PRIOR TO FINAL ACCEPTANCE, OR UPON REQUEST OF THE LANDSCAPE ARCHITECT.
11. ALL SOODING AND SEEDING OF LAWN AREAS IS TO BE COMPLETED AS A PART OF THE LANDSCAPE CONTRACT. A MINIMUM OF 4" OF QUALITY BROWN OR BLACK TOPSOIL IS TO BE APPLIED TO ALL AREAS TO BE SEEDING. CONTRACTOR SHALL BE RESPONSIBLE FOR COORDINATING WITH OTHER SITE CONTRACTORS TO AVOID ANY ACTUAL AREAS OF CONSTRUCTION OR DAMAGE TO AREAS DISTURBED BY UTILITY EXTENSIONS.
12. PLANTERS MIX IS TO BE USED FOR PLANTING BEDS. REFERENCE SPECIFICATIONS FOR PLANTING MIX SHALL BE USED. IRRIGATION SHALL BE INSTALLED IN ACCORDANCE WITH IRRIGATION CONTRACTOR. REFERENCE L1509 SERIES SHEETS FOR SITE IRRIGATION PLANS. IRRIGATION CONTRACTOR IS TO BE A STATE OF TEXAS LICENSED IRRIGATOR, AND IS TO BE A LICENSED CONTRACTOR.
13. PROVIDE REGULAR MAINTENANCE OF ALL LANDSCAPE AREAS AND PLANT MATERIALS AND IRRIGATION SYSTEMS FOR THE FIRST YEAR AFTER COMPLETION OF THE PROJECT. THIS MAINTENANCE SHALL INCLUDE WEEDING, WATERING, FERTILIZATION, PRUNING, MOWING, EDGING, MULCHING OR OTHER NEEDED MAINTENANCE, IN ACCORDANCE WITH THE LANDSCAPE ARCHITECT'S RECOMMENDATIONS. CONTRACTOR'S REPAIR OR REPLACE ACCEPTED BY THE OWNER AND LANDSCAPE ARCHITECT.
14. CONTRACTOR SHALL BE RESPONSIBLE FOR THE PROTECTION OF EXISTING TREES, ETC. IF REPAIR OR REPLACE REQUIRED LANDSCAPING STRUCTURES (WALLS, CURBS, ETC.) SHALL BE REPLACED TO ORIGINAL CONDITION.

12. PLANT MATERIAL AND LAYOUT MUST BE APPROVED BY THE LANDSCAPE ARCHITECT PRIOR TO INSTALLATION.
13. ALL IDENTIFICATION TAGS PROVIDED BY GROWERS AND PLACED ON TREES AND SHRUBS MUST BE REMOVED ON THE PLANTS THROUGH THE PUNCHLIST INSPECTION. TAGS ARE TO BE REMOVED PRIOR TO FINAL ACCEPTANCE, OR UPON REQUEST OF THE LANDSCAPE ARCHITECT.
14. THE PERCENTAGE OF LAWN AREAS IS TO BE COMPLETED AS A PART OF THE LANDSCAPE CONTRACT. A MINIMUM OF 4% OF QUALITY BROWN OR BLACK TOPSOIL IS TO BE PROVIDED FOR ALL GOOD AND SEED AREAS.
15. ALL SEEDING MUST BE DONE IN ACCORDANCE WITH ALL CONSTRUCTION-DAMAGED GRASS SURFACES NOT OTHERWISE PLANTED OR SOODED. CONTRACTOR SHALL REVIEW RELATED CONSTRUCTION DRAWINGS FOR LIMITS OF CONSTRUCTION AND SHALL ALSO CONSULT WITH THE LANDSCAPE ARCHITECT FOR ANY ADDITIONAL REQUIREMENTS. TO DETERMINE ACTUAL AREAS OF SEEDING REQUIRED, INCLUDING AREAS DISTURBED BY UTILITY EXTENSIONS.
16. WATERED MEDIA MAY BE USED FOR PLANTING BEDS. REFERENCE SPECIFICATIONS.
17. ALL LANDSCAPED AREAS ARE TO IRRIGATED WITH AN UNDERGROUND AUTOMATIC IRRIGATION SYSTEM. REFERENCE L1500 SERIES SHEETS FOR SITE IRRIGATION PLANS. THE CONTRACTOR IS TO BE A STATE OF TEXAS LICENSED IRRIGATOR, AND IS TO FOLLOW IT.
18. PROVIDE REGULAR MAINTENANCE OF A LANDSCAPE CONTRACT AND PLANT MATERIALS IN A VIGOROUS AND HEALTHY CONDITION. FREE FROM DISEASES, PESTS AND WEEDS. MAINTENANCE SHALL INCLUDE WEEDING, WATERING, FERTILIZATION, PRUNING, MOVING, EDGING, MULCHING OR OTHER NEEDED MAINTENANCE, IN ACCORDANCE WITH THE LANDSCAPE CONTRACT. MAINTENANCE SHALL CONTINUE UNTIL THE PROJECT HAS BEEN ACCEPTED BY THE OWNER AND LANDSCAPE MAINTENANCE.
19. REPAIR OR REPLACE REPAIRED LANDSCAPE STRUCTURES (WALLS, FENCES, ETC.) IF DAMAGED. THE CONTRACTOR SHALL GUARANTEE THAT ALL WORK IS STRUCTURALLY SOUND AND REPLACED TO ORIGINAL CONDITION.