

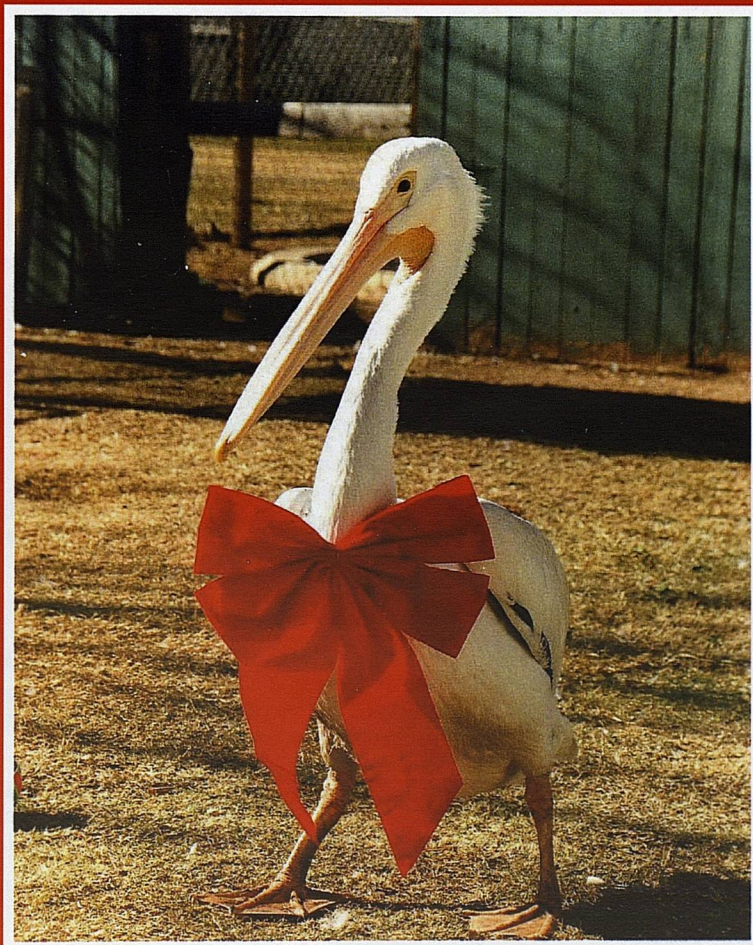
The Mockingbird Chronicles



Newsletter of the South Plains Wildlife Rehabilitation Center, Inc.

Number 4/ 2015

Happy Holidays!



Letter from the Founder - Defining my new Role



Carol Lee

Over the past several months I decided it was time to retire again, for the 4th and final time - and announced it at our October board meeting. I spent the last 27 years volunteering for SPWRC, and was actually helping wildlife

part-time for a veterinary clinic (and bringing orphaned wild songbirds home to raise).

At our November meeting, 16 year veteran volunteer Gail Barnes announced she'd like to be considered for my position as Director. Our Board had no problem accepting her offer, and by March I'll hand over the reins.

I'll continue to serve on our Board, do the quarterly newsletter for as long as my computer holds up, maintain our web site and continue to help with special events. Some things will change, some won't. Gail will process and record our donations for our Treasurer and CPA Pat Harris, make bank deposits, maintain our mailing lists for our newsletter and Holiday Appeal and work with our printer to design annual holiday cards and remittance envelopes.

We're both looking forward to our transition. Read more about Gail's many qualifications on the next page.

I plan to remain here where I've lived for 30+ years, but want to have more free time to do things I never seem to be able to find the time to do. I certainly won't be dropping out of sight.

On another note, due to my many computer problems with both an old and new HP there is no "Adoption" page in this issue. Adoptions and quarterly newsletters are done on Adobe PageMaker, a program that isn't made anymore and is on my old HP. Adobe InDesign is an upgrade, but I don't really want to learn or buy a new program, and Microsoft Publisher just doesn't create a final product that, in my opinion, is anywhere as professional as one done in Adobe.

When my 4 year old HP dies, newsletters may end as well, and we'll move our news to Facebook and to our web site at www.spwrc.org with updates. Read more about that possibility on page 9.

Last but by no means least, we mailed our 2015 Holiday Appeal as we have in the past—these donations help us with our expenses over the winter months, because when 'baby season' ends in fall, our day-to-day donations drop off sharply. If you don't receive an Appeal, you can donate using PayPal (on our web page) or at www.GoFundMe.com/Help-us-help-wildlife.

We look forward to 2016 with surprises and challenges, new acquaintances and experiences and the opportunity to constantly improve our level of wildlife care for our many species of patients.

I wish everyone a wonderful Holiday Season and appreciate your continued support as we enter our 28th year of service in 2016!

Carol

Update on Percy's Friend:

Our permanent resident American White Pelican "Percy" had a pelican friend for quite a while. Eventually, however, the other pelican was growing increasingly restless as migration season started, and several times flew over the fence. It was obvious this bird was ready and eager to migrate and find other pelicans.

One day it was found up in the playa lake by Kohl's Department store. Volunteers took it fish and kept an eye on it.

Soon afterwards, Daniel Andrews got a great video - several minutes long - that showed our bird flying effortlessly and circling the lake. Other pelicans were spotted around town at the same time and we never got a call about one needing help, so we're sure ours is on his way somewhere!

Cover Photo:

"Percy" our Pelican
decked out for the Holidays and back as
our Cover Bird by popular demand
Photo by Carol Lee

The Mockingbird Chronicles is a quarterly publication of the South Plains Wildlife Rehabilitation Center Inc. (SPWRC). The organization is an IRS determined 501(c)(3) non-profit facility that cares for orphaned, injured, ill and displaced wild animals with the ultimate goal of returning wildlife back to its natural habitat.

SPWRC holds state and federal permits but receives no funding whatsoever from either regulating agency.

SPWRC operations are maintained through donations, gifts, grants, education programs, quarterly newsletter subscriptions, tributes, "wildlife ambassador" sponsorships and fundraising events. *Donations are tax-deductible to the extent the law allows.*

Founder	Carol Lee
Education Coordinator	Gail Barnes
Operations Manager	Daniel Andrews

Officers and Directors

Dr. Jim Moyes, President
Rob Lee, Vice President
Carol Lee, Secretary
Patricia Harris, CPA, Treasurer
Gail Barnes
Sheila Johnson

Advisors: Blaine Oden, D.V.M.
Mr. Bill Van Pelt, Austin, TX

Development Consultant
Stacy Keith, MA, CFRE

South Plains Wildlife Rehabilitation Center, Inc.,
is located at 3308 95th Street, Lubbock, TX
79423. (95th and Indiana Avenue, East side)

You can reach volunteer Gail Barnes or
Operations Manager Daniel Andrews to schedule
a program or community service work at
(806) 799-2142.

SPWRC can be reached by e-mail:
spwrc2@yahoo.com

Founder Carol Lee can be reached
at spwrc1@gmail.com

Learn more at our website: www.http//spwrc.org
and follow us on Facebook

Meet our new Executive Director come March, 2016



Gail Barnes with "Jasper"

Gail Barnes has a BBA degree (Bachelor in Business Administration) from North Texas State University and a BS degree (Bachelor of Science) from Texas Tech University. A 16-year veteran volunteer, she's served in many capacities including as Operations Manager, Assistant Operations Manager and Education Coordinator. She heads the Junior Volunteer Program (since 2002); coordinates, schedules and presents virtually all the Center's environmental education programs (which generate a great deal of money for SPWRC), writes our donor thank you cards and letters and knows many of our donors personally.

Gail also holds her own state and federal permits from Texas Parks & Wildlife Department and U.S. Fish & Wildlife Service and admits wildlife to her own licensed facility, not far from SPWRC. She'll continue to do "Wildlife Friday" weekly segments on KLBK-TV and help oversee our college interns and volunteers. She's great at networking with other agencies and individuals who also work with wildlife. She's accumulated many hours of Continuing Education, including at veterinary symposia the past two years. In March 2016, she'll attend a wildlife conference in Norman, OK, sponsored by the National Wildlife Rehabilitators Association of which she's a member.

Several years ago she was featured in a story in 'Texas Techsan,' a magazine for Texas Tech alumni. She was bestowed in 2011 with the Conservation Award from the Nancy Anderson Chapter of the DAR (Daughters of the

American Revolution).

Gail is also a Certified Texas Master Naturalist - the organization's Mission is "To develop a corps of well-informed volunteers to provide education, outreach, and service dedicated to the beneficial management of natural resources and natural areas within their communities for the State of Texas." Gail certainly helps promote that!

Yes, there will be a Holiday Open House at SPWRC this Year!

SPWRC hasn't held a Christmas Open House for the past two years, in preparation for construction and having quite a bit of the Center's back part of the property torn up.

Now, however, we're excited to have the public come and visit, take pictures, and see our new barn, and new waterfowl facility.

Join us Saturday, December 19th between the hours of 11 AM and 2 PM - Come and go - and say hello to our staff, volunteers, and meet Gail Barnes, who will become the Center's new Executive Director in March 2016.

We ask a minimum \$1.00 donation for guests over 4 years old, or bring something from our Wish List (on our web site at www.spwrc.org)

We'll have Wildlife Tee Shirts for sale if you need some last minute gifts!

Park adjacent to the Center at the Indiana Baptist Church parking lot. We'll look forward to seeing you!



*"Nature Always Wears the Colors of
the Spirit"*

Ralph Waldo Emerson

Environmental Education

Since September, Gail Barnes and other volunteers presented the following environmental education programs.

*"Bugs, Birds and Buffaloes" was held at the Buffalo Ranch outside of Brownfield, Texas.

*A presentation for the OLLIE program at Texas Tech University, for older adults who want to continue to learn

*Another program at TTU for an "ESL" group (English as a second language)

A Playa Lake program in Cochran County, Texas

*Programs were given at Windmill Village and Ventura Place, senior living locations in Lubbock.

*Gail spoke to a South Plains Biology class at SPWRC.

*On October 23rd, they participated in a "HOOTenanny" autumn festival for kids at Miller Elementary in Lubbock.

*Tours were given for Scouts in Cub Pack #574 and Pack #151.

*A tour was given to students and teachers from Sundown Elementary from Sundown, Texas and for Christ the King school in Lubbock.

If you'd like to schedule a program for your school or group, call Gail at the Center at (806) 799-2142.

Presentations are already booked into 2016. There is a nominal charge and proceeds from environmental education programs are one of the many ways SPWRC keeps our doors open.



midtown
printing & graphics

A big thank you to John Frullo, Crystal Donnell and the staff at Midtown Printing for doing a great job with our annual Holiday Appeal and quarterly newsletters!



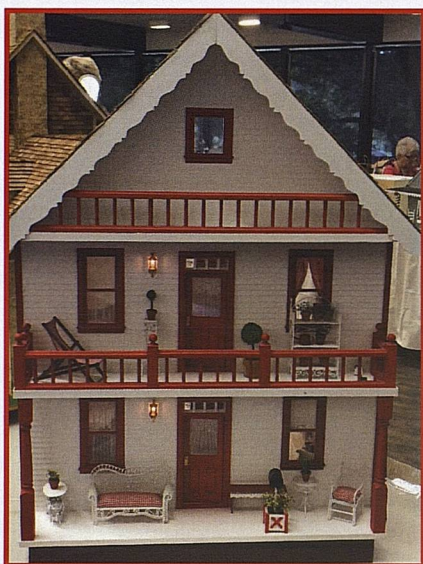
News and Notes

Miniaturists Annual Show and Sale in October

Thank you once again to the Miniaturists of Lubbock for their generous donation of \$500.00 to SPWRC. Proceeds are generated thanks to their annual sale and show the first weekend in October.

Gail Barnes and I visited their event and saw many familiar faces - it was a good crowd this year and there were guests of all ages.

Thanks to everyone who participated, and to Julian Biggers, Treasurer!



The Hawk Who Comes to Dinner

It's a frosty winter morning. You throw on a coat and head outdoors to fill your bird feeders. The birds are close-by, waiting in the trees. Sunflower seed for the jays. Thistle for the Pine Siskins. Safflower seed for the cardinals. The moment you go back inside, birds of every color, shape and size storm the feeders. You feel good, knowing you did something to help wildlife get through the winter cold spell. As the morning passes, you look outside again, and wonder why there is almost no activity at your feeding stations! You imagine a cat may be lurking nearby. More time passes and still no birds. The Blue Jays sound their alarm calls throughout the morning, but that's not uncommon.

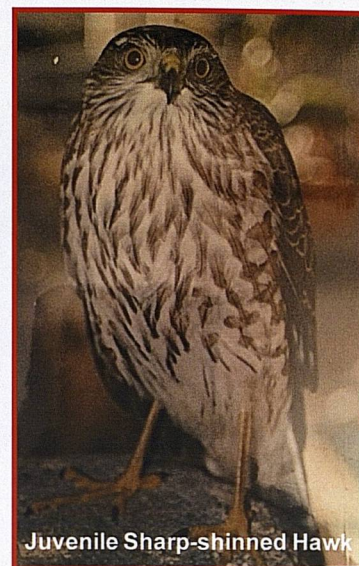
You glance out the window. Suddenly, horrified, you see a large bird with long legs swoop down on a lone House finch on your platform feeder. In the blink of an eye, the finch is gone. The intruder was too large to be a jay or a grackle, and *this* bird was brown. Keen eyesight, sharp talons, lightning fast strikes: this adds up to only one thing - a hawk. These predators are not uncommon, and are frequently seen near backyard bird feeders, and very often during the lean winter months. Suddenly, you feel defenseless. Here you are setting the table inviting your feathered friends, and they become the dinner. You feel responsible, and are now faced with a real dilemma - to feed or not to feed.

Hopefully, the following information will make the decision easier for you. First, whether you choose to feed the songbirds or not, the hawks will continue to hunt and eat, and those that normally dine on birds will continue to dine on birds. If a hawk isn't stalking *your* feeding station, they'll be eating somewhere else nearby. Two species of "bird-eating" hawks that normally reside in Lubbock County are the Cooper's Hawk and Sharp-shinned Hawk. Both have similar markings and a propensity to eat songbirds.

While there will be one less songbird at the feeding area, these brief but dramatic encounters are a naturally occurring part in the scheme of things, and will be repeated over and over in winter, as more songbirds depend on backyard feeders for survival. The Sharp-shinned Hawk, or "sharpie" is the smaller of the two hawks. These birds of prey (raptors) are well adapted for speed and maneuverability. They fly rapidly on short wing-beats, often interrupted by a long glide. The sharpie is more likely to kill small birds, while the Cooper's may take a dove or jay-sized bird. However, both are opportunistic, and will take whatever prey they can capture. These hawks are called accipiters: agile, short-winged long-tailed "forest raptors," and are likely to venture from the woodland into developed areas looking for prey. They may attack smaller birds distracted by picking sunflower seeds or eating suet.

You may not be pleased that a bird of prey has set up a sentry post overlooking your feeders, but there is not much you can do to prevent the raids. You can place your feeding stations near cover, such as dense shrubbery, where songbirds have a chance to escape whenever one of these hawks drops by for lunch. Remember your bird feeding efforts benefit a wide variety of species, including predators and this in turn adds to the diversity of wildlife in your yard. Moreover, these raptors do not kill enough songbirds to impact or reduce their population. This is but one of nature's ongoing survival dramas unfolding. No one relishes witnessing such life and death struggles, but this is, after all, the way these raptor species make a living. Birds of prey don't survive on seed and suet, and do have a very important role in the environment.

Watch the predatory birds the same way you watch other birds; learn from and try to appreciate them. They are one more member of your backyard wildlife community, and are all part of nature's equation.



Juvenile Sharp-shinned Hawk

Tributes

Gifts to Honor

*Janie and Glenn Forister made a generous donation for Mollie Carter's Birthday.

*A generous gift was also received from Janie and Glenn Forister in the name of John Carter.

*A gift was received from Megan Araujo of North Hollywood, CA in Honor of the recent wedding of Tate and Annie Marshall. Tate is a former SPWRC volunteer.

*Alzada Malone of Lubbock gave a generous gift in addition to her donation for Diana Ray of Odessa, Texas, with her message, "Happy Birthday and Merry Christmas." An acknowledgement was sent to Diana, and she will receive our December newsletter.

Christmas Tributes

Pam Taylor of Ralls, Texas, made a generous contribution in the name of family members for Christmas:

*Ken and Dixie, Katy and Kelly Welch of Baird, Texas

*Josh and Amy King and Girls, Cisco, Texas

*Clay, Matt and Haleigh McDuff of Springhill, Florida

*Mark, Shannon and Krissy McDuff of Colora, Maryland

*Justin and Kelley Kubly and Boys of Louisville, Kentucky

*Janie and Glenn Forister made a generous Christmas donation "In Honor of the Carter Family."

Gifts to Remember

*Gail and Larry Barnes made a Memorial donation in the name of Robert Flache. His wife Shirley Flache and family of Brownfield, TX, were notified of their kindness.

*Denise and Stanley Davis made a Memorial donation in the name of Marcos Morillon. Acknowledgements were sent to the following: Mandy, Mateo and Makaylee Morillon of Artesia, NM; also to Joe, Jawna, Lexi and Mikenzi Carlo, Artesia, NM; to Yvonne and Jim Carlo, also of Artesia, NM.

*Kathy and Frank Phillips made a Memorial donation in the name of "Fudge Phillips." An acknowledgement was sent to Nancy and Bob Phillips of Roswell, NM.

*Beverly Colbert made a Memorial gift in Memory of Matthew Colbert



"Bubo"

Adoptions

*Kim Davies of Cedar Park, TX, adopted our Great Horned Owl "Titan" for Kay Kennedy of Austin, TX and "Shadow," our Barred Owl for Sharon Wharton of Cedar Park, TX.

*Longtime donor Dorothy Hanesworth of Matador, Texas, adopted three of our wild-life ambassadors for her family: "Bubo 2," the Great Horned Owl, "Jasper," our Common Barn Owl, and "Farley," our Burrowing Owl.

*Ernest and Sheila Little of Lubbock adopted "Humphrey," our Peregrine Falcon, and "Athena," our little Eastern Screech Owl.

*Mary Asbell and Allan Mackenzie adopted our little owl, "Oden."



Commemorative Brick Walkway Updates

*David and Canzada Bray and Mary Bray purchased Commemorative Bricks for the following:

Timberline Wildlife

Janet Sharp

Care for Animals

They also purchased a brick in Memory of Jim Curnutt
AT1 US Navy

*Larry and Gail Barnes purchased two Commemorative Bricks:

In Memory of Sam and Vera Barnes

In Memory of Harold and Marion Barnes

This is a great way to support SPWRC while honoring or remembering a family member, friend or beloved pet.

Visit our web site (www.spwrc.org). You can print and mail instructions for your brick or bricks.

Each brick can accommodate 3 lines and 15 characters per line, including spaces. Several bricks have been purchased over the past few months and should be laid in our walkway by year's end, but may be delayed if our engraver is backlogged. We can call you if the brick-laying is delayed for some reason, and make arrangements for you to come and visit! If you'd like to purchase one, please let us know as soon as possible so they can be engraved and hopefully be laid in time for our December Open House, December 19th.

If your donation arrived after December 3rd, it will be acknowledged in our March 2016 newsletter. If your name, gift or other information was inadvertently omitted or incorrect, please notify Carol Lee at spwrc1@gmail.com

If the expiration date on your newsletter label is not correct, please tell me. Donations of \$25.00 receive a subscription of 1 year (4 quarterly issues).

Our projects

I think it's fair to say during this past year SPWRC made a major leap forward into the future. Since December 2nd of 2014, our old, three-story uninsulated and unplumbed 28 year old barn underwent a complete renovation and beautiful face-lift. It's been a long evolution of sorts, starting with cleaning out everything that was stored there over 27 years, beginning the summer before construction started. Also, a new waterfowl-water-bird building was constructed at the same time on the site of the old stable, thanks to several gifts from a donor who wishes to remain anonymous. Two major gifts were given the J.T. and Margaret Talkington Foundation, South Plains Foundation, the Community Foundation of West Texas and the Helen Jones Foundation. Read more about the many people we have to thank on these two pages.

There were many, many steps, and hundreds of details. We worked with architect Mary Crites and Teinert Construction (Chad Henthorn and Daniel Horton). Rob Lee was instrumental in seeing everything ran smoothly and according to plan.

Our new, beautiful red barn is a palette of different colors inside – yellows, oranges, blues and lime greens, highlighted by warm dark brown room doors. It's well insulated and energy efficient and we have, at last, lots of storage space and plenty of electrical outlets – AND a dishwasher!

The third floor houses our heating and cooling units, and "Tyto Towers" (Tyto indicates Barn Owl Species) - those owls we hope to welcome back into the new cupola on the roof, in the same location it was before construction started. An "Owl Cam" will be placed in there at some point in the future thanks to a donation by Gail and Larry Barnes. Many Barn Owl pairs raised families there since 1988!

Lots of windows and skylights provide plenty of natural light, and doors on both ends of the first and second floor will allow for great ventilation. There's also a door on the third floor where we can enjoy a beautiful view of the grounds below.

The waterfowl facility construction progressed alongside the barn renovation, creating indoor and outdoor space for our duck and water bird patients, and also to house our resident pelican, "Percy." This "piggybacking" of both projects helped save both funds and time.

Donor Thank You Reception



Our Donor Tree and Why Don't I have a Leaf?

Our criteria for names/leaves to go on our Donor Tree were the following:

- * A donor or donors who bought "square footage" of a new barn facility (at \$50.00 per square foot) during a 1999 fundraiser at County Line Restaurant.

- * Those who specifically gave for the Barn Renovation project during our summer 2015 appeal (which was in our newsletter) or who gave specifically through our GoFundMe account or PayPal account for this project.

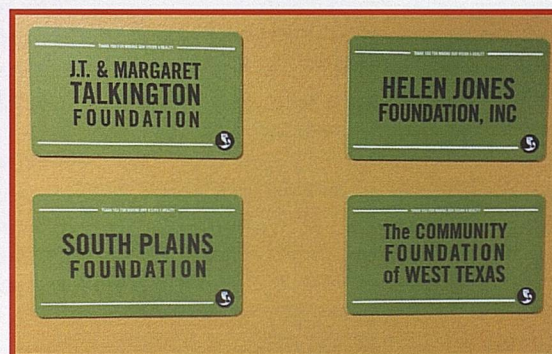
- * Life Donors and Benefactors who gave \$1000.00 - \$10,000 or more in a single gift.

This project will be ongoing if you'd like to make a gift - even though the project is complete, we used funds from our savings account to help pay for what wasn't covered by the grants we received from the four area foundations.

On the evening of November 19th, SPWRC hosted a THANK YOU reception for individuals and grantors who helped make our dream of a completely renovated barn come true.

In part, this was my message to our donors and supporters: "I'm amazed the activities that started in my kitchen raising a few birds has not only prospered, but grew into a regional wildlife rehabilitation facility that grew exponentially over the last 27 years.

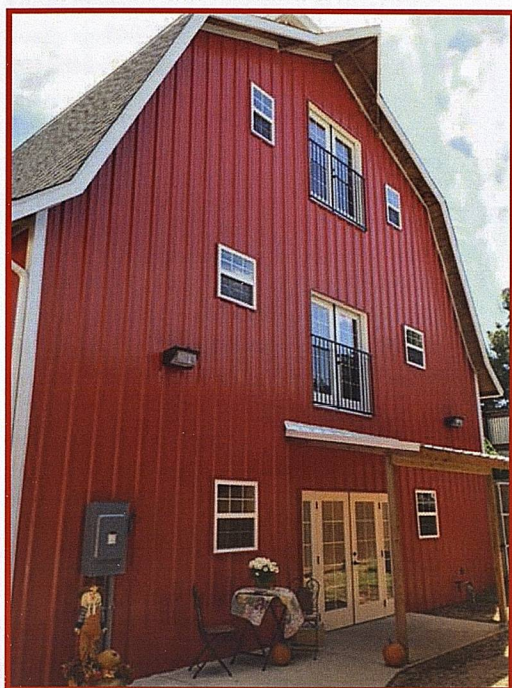
The renovation of an old dilapidated barn with no plumbing, a dirt floor, both an eyecore and a fire hazard, has been the fulfilment of a dream, and something I didn't believe would come true during my lifetime -but it HAS happened and the four Foundations you see in the photo (R.) helped make it possible:



The J.T. and Margaret Talkington Foundation were our first grantors, followed by Helen Jones Foundation, South Plains Foundation and the Community Foundation of West Texas (formerly Lubbock Area Foundation).

Our Director of Development and Grant Writer Stacy Keith was the catalyst that made this happen. We're sincerely appreciative!

are complete!



Since 1988 we also saved every penny not used for operations. The best part is: we have no debt – not now nor at any time during the past. In fall 2014 we selected architect Mary Crites and Teinert Construction (Coby Melton was project supervisor). Preliminary work began last fall, and construction started December 2, 2014. Many thousands of work hours were lovingly poured into SPWRC and many thousands of wild animals have been patched up, treated, raised, rehabilitated and returned to their rightful place back into their natural wild habitats.

Our wonderful veterinarians, Board Members, volunteers, Junior Volunteers, interns, TTU professors, have all given tirelessly of their time and talents. For our first 19 years, the Center ran on 100 % volunteer power, one of the things I'm most proud of. The dedication and commitment of so many people is unparalleled.

Thousands of children and adults have been touched by our environmental education outreach programs all over the Texas South Plains since 1990, emphasizing wildlife as a natural resource. We've networked successfully with individuals and local, state and federal organizations.

We hope to bring attention to hazards our wildlife species face every day: displacement, illness, poisoning, electrocution, drought, predators, traps and illegal shooting. We get no funds whatsoever from our state or federal regulators – we raise our own funds to keep our doors open.

We've had many joyous experiences, and sad ones over the years...not every outcome is as we hope. Some think we spend our days feeding cute baby birds and petting fuzzy squirrels, but such is not the case. The job is demanding with long hours of preparing food, running errands, doing programs, treatments, cleaning cages, pet carriers and mews, mopping, and yes, euthanizing animals that are hopelessly injured. We have persevered.

Other huge thank yous go to our tireless volunteer Gail Barnes, full time Operations Manager of 12 years Daniel Andrews, and part time Manager Alison Doran. Our wonderful veterinarians, Lane Preston and Tim Polk from Animal Medical Center; Veterinarians and staff from Above and Beyond Pet Care Hospital; Dr. Blaine Oden; former Board members and our current members: President Dr. Jim Moyes; Vice President, Rob Lee; Treasurer and CPA Pat Harris. I serve as Secretary, plus members Sheila Johnson and Gail Barnes – also advisor William Van Pelt who drove to Lubbock from Austin for the reception and has worked for years behind the scenes, offering advice, financial support and setting up programs like EBay Giving Works. He donated his help as well as the wine for our Donor Event.

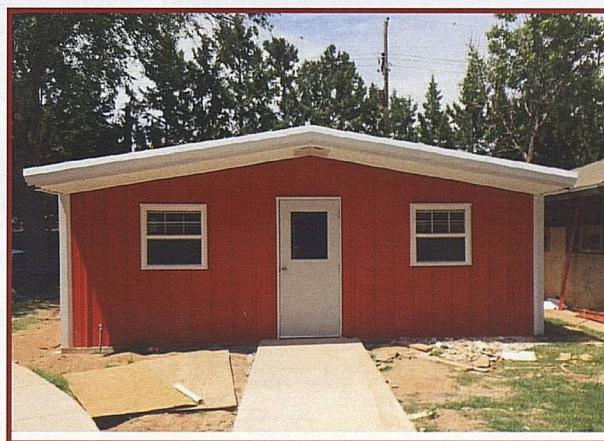
Thanks to Rob Lee (again) for the many hundreds of hours spent not only supervising everything including the actual construction, but helping with every aspect and detail, buying supplies, painting, hauling, installing and being at SPWRC virtually every day over the past 10 months while construction was ongoing. He didn't only "watch" - he worked side by side with the workmen.

Special thanks also to Carol Fowler, Designer and Adjunct Instructor at Texas Tech and the crew from 'Signs on the Go' for development of all signage including on the first floor and the beautiful Donor Tree on our second floor, pictured below...these people are Charter Members from 1999 who gave \$50.00 per square foot for a new facility.... and now we finally have a new facility!

Thanks to our Keystone (monthly) donors; our federal and state officers (USFWS Special Agent Russell Carter who replaced Rob Lee when he retired and Mallory Mitchell with TPWD); Officers of South Plains Veterinary Medical Association for many years of support and Dr. and Mrs. David Close who gave us our first donation that was used to buy our first three incubators.

Also thank you to David Marshall who keeps our history safe and sound at the Southwest Collection on the TTU campus. Thanks also to my former husband and friend, Dr. Louis Mitchell, for purchasing the land for a wildlife center which was simply a means "to get all the animals out of our house!" Little did he or I know what it would become. He's alive and well and follows our progress from Temple, Texas.

Our promise to everyone who helped make this life-changing workplace happen is that we'll continue achieve the highest standard of care for every patient we admit. Thank you one and all, and we sincerely hope you will continue to support us!



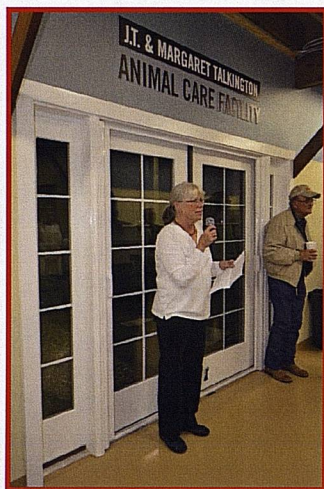
Behind the Scenes



Carol Fowler, Designer and Adjunct Instructor at TTU who designed our "Tree." Carol is one talented lady!

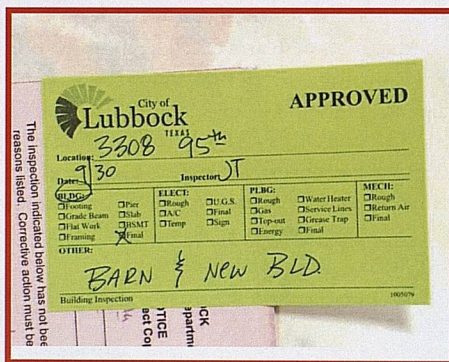


Donor Tree "Leaves" being applied "Signs on the Go" did all our new signage



Founder Carol Lee stood under the SPWRC's new sign - the J.T and Margaret Talkington Animal Care Facility to thank our major donors who made our transition "happen!" Visitors see the Talkington sign as soon as they enter our new barn.

Major donors have plaques on our first floor, and our Donor Tree is on two walls on the second floor (photo, left and above).



Our barn and waterfowl facility both passed city inspections

To learn more about birds in our area, sign up on our local Audubon Listserv:
leasbirds@freelists.org

There are many ways
you can
help us help wildlife!

SPWRC is a registered at Amazon Smile
for charitable donations
<http://smile.amazon.com/ch/75-2468445>

Shop at AmazonSmile
and Amazon will make
a donation to:
South Plains Wildlife
Rehabilitation Center,

Get started

amazon smile

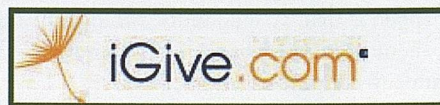
or visit:

<http://www.gofundme.com/Help-us-help-wildlife> to learn more.

"and ... I'm wildlife....the Center raised
and released me....and that summer I
really loved apricots!"



To donate using PayPal, visit our
web site: www.spwrc.org



Will this Issue be our last quarterly newsletter?

My last few months were full of technology trials and tribulations. Hewlett-Packard (after *dozens* of calls and remote assistance) finally agreed to have my new, 4 month old, computer picked up and sent back to a service center in Indiana. "Windows Updates" couldn't be installed and that was only the tip of the iceberg. I spent the better part of two days putting programs, etc. back on the computer since the hard drive had been wiped clean.

A week after it was returned someone called pretending to be an HP technician, "checking back to see if it was working properly." He proceeded to offer me a refund of \$1000.00. I paid more than that for the new HP + a 3-year warranty so I thought it odd, but listened to the remainder of his spiel. He asked for remote access (also nothing new) "to show me all the files that couldn't be repaired." No red flag – yet.

Soon the ruse was apparent: *before* I could receive a refund, I must first go to a "Moneygram" location and pay a \$200.00 "registration fee" by credit or debit card to a man in China, "where they make the HP computers," he said. By this time, my husband was listening, and we knew this was a scam. We shut down the computer, but when it was re-booted later, the man was immediately back on it. We called the HP Tech Support number I'd been given many times and got a "real" HP person on the line to help.

The scammer kept calling and cutting into our phone call (we didn't take it), AND onto my computer, and even sent a message that covered my whole screen, and in big letters told us to "Take the phone call!" This went on for at least an hour, and meanwhile, to remove all traces of his access to my computer the legitimate HP tech had to wipe it... again.

My next two days were spent putting everything back on – again. It has become increasingly difficult to work between two machines, an iPhone and iPad with photos, "iCloud" and getting everything into the newsletter.

To say it's all been extremely frustrating is an understatement. As I said in my Letter from the Founder, we may have to move to our web page and to our Facebook pages to keep interested parties updated. Alternatively, it may be published semi-annually but again, only if the old HP holds up. Time will tell.

Release back to the wild is always our hoped-for final outcome!



A large Snapping Turtle was treated and released this fall



Two of the many Common Barn Owls Gail Barnes is raising this fall and winter as their habitats (old cotton gins and buildings) are destroyed



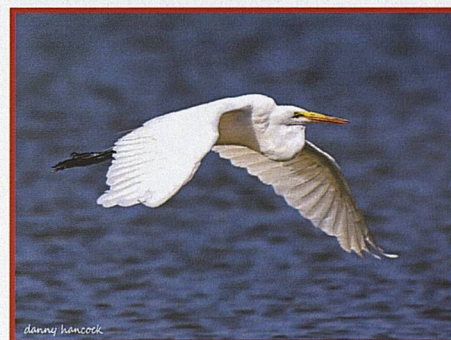
Happy Holidays from all of us at SPWRC!

Thank you for Supplies!

- *Cheri Lollis donated syringes
- *Diana McClendon donated fish
- *Westminster Presbyterian Preschool (Heather Bell) donated supplies
- *Bebe and Art McCasland, Big Spring, TX, donated beef heart for our raptors
- *Leanna Smith, Levelland, - paper towels and drawer storage containers
- *Shirley Wade donated seed
- *Linda Henry donated two bar stools
- *Susan Radle donated animal food and bird seed
- *Dot Elkins
- *Margaret Loveless
- Pam Tuman donated a Laser Jet Printer and a cage
- *Jennifer McClesky donated a 55 Gallon Aquarium and Stand
- *Floyd and Clarice Robertson donated a 35 lb. bag of bird seed
- *Robert Lopez donated a treatment table
- *Karen and Tom Martins donated pumpkins for decorations in front of our new barn

2016 will mark the Wildlife Center's 28th year of service!

Shutterbug



Great Egret
Photo by Danny Hancock

Danny Hancock and his wife Maggie both volunteer at SPWRC and Danny has allowed us to use many of his beautiful photographs. This is just one of them!

Food for Thought

Do you get tired of sending money to a charity you support, only to have them send you a "free gift" and then contact you several weeks later asking for more money?

Over the past years, I've limited the number of charities I contribute to. I don't want a thank you gift, and prefer that money stay with "the cause." Many times, donations may also go toward high salaries or administrative fees.

The Wildlife Center was 100% volunteer and paid no salaries until 19 years after our founding, and only then because we needed reliable people to work when we needed them. Now we have only one full time salaried person who works caring for animals, and 1 person who fills in the other two days. We have no "administrative fees."

We're very protective of our donors and funds. We never sell, share, or give out donor information. We don't share our mailing list. If someone doesn't want their name acknowledged in our newsletter, their gift is listed anonymously.

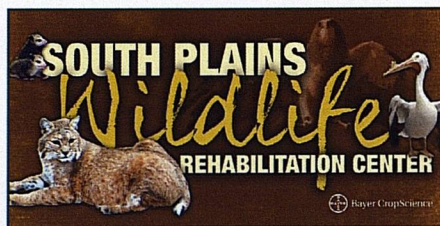
Since 1995 our quarterly *Mockingbird Chronicles* is our conduit to the public telling donors what their funds are being used for.

Our expenses continue to rise as we grow: utilities, insurance, printing, postage, and annual food, treatment and care costs for our wildlife admissions: **2352 admissions by December 3, 2015, and another 200 admissions at Gail's facility.** (Incidentally, Gail put in approximately 2900 volunteer hours during the first eleven months of this year.

Thanks to our Development Director Stacy Keith, we've had the good fortune of receiving a number of grants in 2014 that provide help we need for operations, food and veterinary expenses, utilities and also to improve our overall facilities.

Everyone's gift makes a difference for the Wildlife Center!

Our web site, [www.http://spwrc.org](http://spwrc.org) is updated often, so check on what we're doing month to month and follow us on Facebook.



Don't Underestimate Your Own Ability to Influence the Younger Generation

Recently I found some computer files I hadn't seen for years. One in particular caught my eye. It was an obituary for Clara Luckenbach, our neighbor when I was growing in Allentown, PA.

I'd be remiss if I didn't include her in the list of "people who influenced me" during my life. She and her husband Bert were avid bird watchers, bird fanciers, bird-book collectors, and could identify birds by their song alone. One entire wall of their living room was a built in bookcase – filled with bird books, guides and everything bird-related.

When I was in third grade, my mom suggested I invite Clara to speak to my class about birds. I did, and she accepted. Although I couldn't tell you one thing she said specifically now, her passion for songbirds was contagious, and that was the very beginning of how I caught the bug. As a thank you, she gave me a pin of a Scarlet Tanager. Somewhere over time that pin was lost, but I never forgot it, and since replaced it with something very similar.

She was an educator, and passed away some years ago at the age of 91. Her husband Bert died at age 99. He was also a nature lover, and when I'd take my young children back to Allentown, he was always ready to walk them through the Lehigh Parkway woods where I spent my childhood on "nature walks." He'd show them paths through the woods, identifying birds and wildflowers along the way.

The moral of the story: never underestimate how you can influence a young child with your own love of nature and the natural world. I know I passed some of this love along to my three children and five grandchildren along the way!

Do You Know?

*SPWRC raises all its funds to keep our doors open. (Donations when animals are brought in; gifts; grants; newsletter subscriptions; wildlife ambassador adoptions; Tributes; education programs; fundraising or special events and sale of Commemorative Bricks. **We get no funds from our state or federal regulatory agencies and have no "parent" organization.** *For the first 19 of our last 27 years we were 100% volunteer.

*If you give a \$20.00 donation, you'll receive one complimentary newsletter acknowledging your gift. Gifts of \$25.00 or more receive four issues - Mar, Jun, Sep and Dec.

*Your gifts are tax deductible to the extent allowed by law; SPWRC receives many year-end donations for this reason.

*Our annual Holiday Appeal is also mailed in December. Once September arrives, **our animal donations drop off sharply** (because "baby season" and breeding season has passed, so our admissions drop, too). One thing doesn't drop: our expenses. **Our Holiday Appeal message is: "If we helped you in the past, perhaps you can help us now."**

2015 Marks the 117th annual Christmas Bird Count



The Lubbock County CBC will be 19 December 2015. Each team will have an experienced leader and birders of all ages and experience levels are welcome.

There will also be counts at Muleshoe National Wildlife Refuge and at White River Lake. Enthusiastic birdwatchers all don warm clothes, pack field guides and binoculars and head out for the fun annual counts.

If you're interested, contact Anthony Hewetson at fattonybirds@gmail.com or 806-252-1213.

Acknowledgements

Thanks to everyone who helps support our efforts. We appreciate every penny, and with donor contributions, we can continue to help injured, displaced, ill and orphaned wildlife.

Our Keystone Donors:

Carre' Avian
Joyce Badger
Judy Billman, Seattle, WA
Cindy and Jody Burkes, Denver City, TX
Becky and Jason Cooper, Cambridge, MA
Stanley and Denise Davis
Terry Gail Hooper
Mark Jones
Albert Johnson, Wichita Falls, TX
Joyce Komkov
Sherri Mason
Tom McLaughlin
Davis Melton
Fidel and Twila Ortiz, Hart, TX
Vicki Schellhase
Deanna and William Schwartze
Dr. John and Debbie Zak

Our Keystone Donors send a check every month to SPWRC!

Additional Gifts:

\$1000.00

Gail and Larry Barnes (Barn Renovation Project and purchase of an Owl Cam)
Dr. and Mrs. Eugene Stalnaker

\$500.00

Miniaturists of Lubbock (Read about their annual show and sale on page 4)
Barbara and Michael Stephens "Love Gift"
Lori and Gordon Wilkerson

\$300.00 - \$400.00

Glenn and Janie Forister
John Heh, Levelland, TX
Terry Gail Hooper
Dr. Mary Lochbaum

\$250.00

Jean Way (via our GoFundMe account)

\$200.00

Marilyn Clifford (Holiday Appeal)
Mary and John Gillas (Two gifts including for Barn Renovation)
Alzada Malone
Juanice Myers, Austin, TX (PayPal)
Clarice and Floyd Robertson
(For Barn Renovation)

\$100.00 - \$150.00

Mary Asbell and Allan Mackenzie II
Debbie and Kelsey Brunson
(Holiday Appeal)
Dr. Stanley and Mrs. Shirley Cebull
Claudia Cory
Dentler Erdman
Janis and Larry Gailey
David Garcia (David Garcia Roofing),
Meadow, TX
William Hase and Alice Young
Tom Hicks
Dr. George and Mrs. Pat Jury
Jane Nagy
Lois and Loyd Shrout, Manor, TX

\$50.00-\$75.00

Don Boatman (Holiday Appral)
Sherry and Sean Childers, Shallowater, TX
Jancy Jester and Kathryn Suchy
Dona Kelley
Crystal and Marcus Keslin (For Barn Renovation)
Carol Lee
Linda Steffey
Alan and Barbara Taylor (Cub Pack 574 Tour)

\$40.00

Jeff Boatright
Tim Caraway
Emily and Warren Johnson
Lisa Randolph, Shallowater, TX
Glenn Ravan, Clovis, NM

\$25.00 - \$30.00

Anonymous, New Deal, TX
J.L. and Teresa Back, Meadow, TX
Celia Campos
Jeannie Duenes
Mark Hutchens
Kathy and George Lange, Slaton, TX
Rachel and Thomas Maples
Jennifer Mulsow
Patricia Ortiz
Stephanie and Anthony Presley
Elizabeth Rylander
Allix Saathoff
Laurie Smerud
Carie Steele
Rosemary Stidham
Jarrod Sweetman

\$25.00 - \$30.00, continued

Xiaomiao Wang
April Yalcin

\$20.00

Karen Hegi Animal Care Clinic,
Anonymous Donation to GoFundMe.org
Fariha Aziz
Jason Berryman
Susan Bishop
Davis Brantley, Sundown, TX
Robert Brashear
John Bulliou
Luis Cantu, Seminole, TX
Mayank Chavda
Ghislaina Cobb, Levelland, TX
Sheree Coleman
Kim Cooper, Slaton, TX
Amy Elliott
Sequoia Ertner
John Gillas
Brian Hildebrand
James Livermore
Marcus Owen, Abernathy, TX
Glinda Poe
Samantha Salinas
Herschel Spears
Carol Stevenson
Jarrod Sweetman
Debbie Therwanger
Shirley Wade
Mr. and Mrs. Helmut Wierzba
Samantha and Brian Yovicson



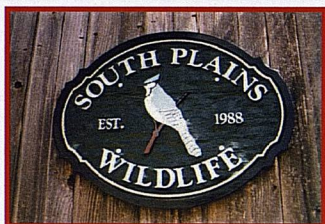
We still have many styles, colors and sizes of owl and bobcat tee shirts. Call Gail or Daniel for more information or come by Open House

The Mockingbird Chronicles

Newsletter of South Plains Wildlife Rehabilitation Center, Inc.

c/o SPWRC, Inc.
3308 95th Street
Lubbock, TX 79423

NON PROFIT ORG.
US POSTAGE PAID
Lubbock, TX
PERMIT NO. 591



What a Difference a Year Made!



Remember this?
Our barn as it looked in 1988

We are SO proud of our
new wildlife facility!

