

FOR PLAT SEE
OTHER SIDE

THE STATE OF TEXAS

LAMB COUNTY

Survey No. **1.**

Block No. O5.

Grantee: D. & S. E. R. R. Co.

CORRECTED FIELD NOTES of a re-survey of **640** acres of land situated in Lamb County, about **5** miles **N. 80°** W. from Olton, same being Section No. **1** Block O5, Certificate No. **23** issued to D. & S. E. R. R. Co., made by me as State Surveyor, by virtue of Title LXXXIX, Chapter One, Revised Civil Statutes of 1895.

(All courses compared to a meridian passing through old monument at N. W. corner of Survey No. 12, Block S4 and proved by observing Polaris when at elongation. Azimuth $1^{\circ} 25' 20''$.)

BEGINNING AT a cement block 10"x 12"x 8" set 2 miles S. and 10 miles W. from old monument, the original N.W. corner of survey No. 12, Block S-4 in Hale County, Texas.

Thence S. at 1585 vrs. cross road, at 1901 vrs. set cement block 6"x6"x6".

Thence E. at 248 vrs. and 450 vrs. cross roads, at 1901 vrs. set a cement block 10 x 8 x 6".

Thence N. 1901 vrs. to a cement block 8 x 6 x 4" and a piece of plunger ~~mark~~ rod.

Thence W. 1901 vrs. to the place of beginning.

Surveyed with Bull's Eye Transit No. 6741

Bearings record true course.

W. J. WILLIAMS, Transitman.

CLAYTON WILLIAMS, } Chain Carriers.
TOM MCGEE.

I, W. D. TWICHELL, State Surveyor, do hereby certify that the foregoing re-survey is correct and that it was made by me in the field, in accordance with law, and that the limits, boundaries and corners with the marks, natural and artificial, are truly and correctly described in the foregoing plat and field notes.

Re-surveyed **2** day of August, 1909.

APPROVED:

W. D. Twichell
State Surveyor.

Commissioner General Land Office.

CCS

File No.

County.

Corrected Field Notes

Survey No.

Filed

190

Commissioner.

File Clerk.

Commissioner General Land Office.

APPROVED:

Re-surveyed 2 day of August, 1909.

I, W. D. TWICHELL, State Surveyor, do hereby certify that the foregoing re-survey is correct and that it was made by me in the field, in accordance with law, and that the limits, boundaries and corners with the marks, natural and artificial, are truly and correctly described in the foregoing plat and field notes.

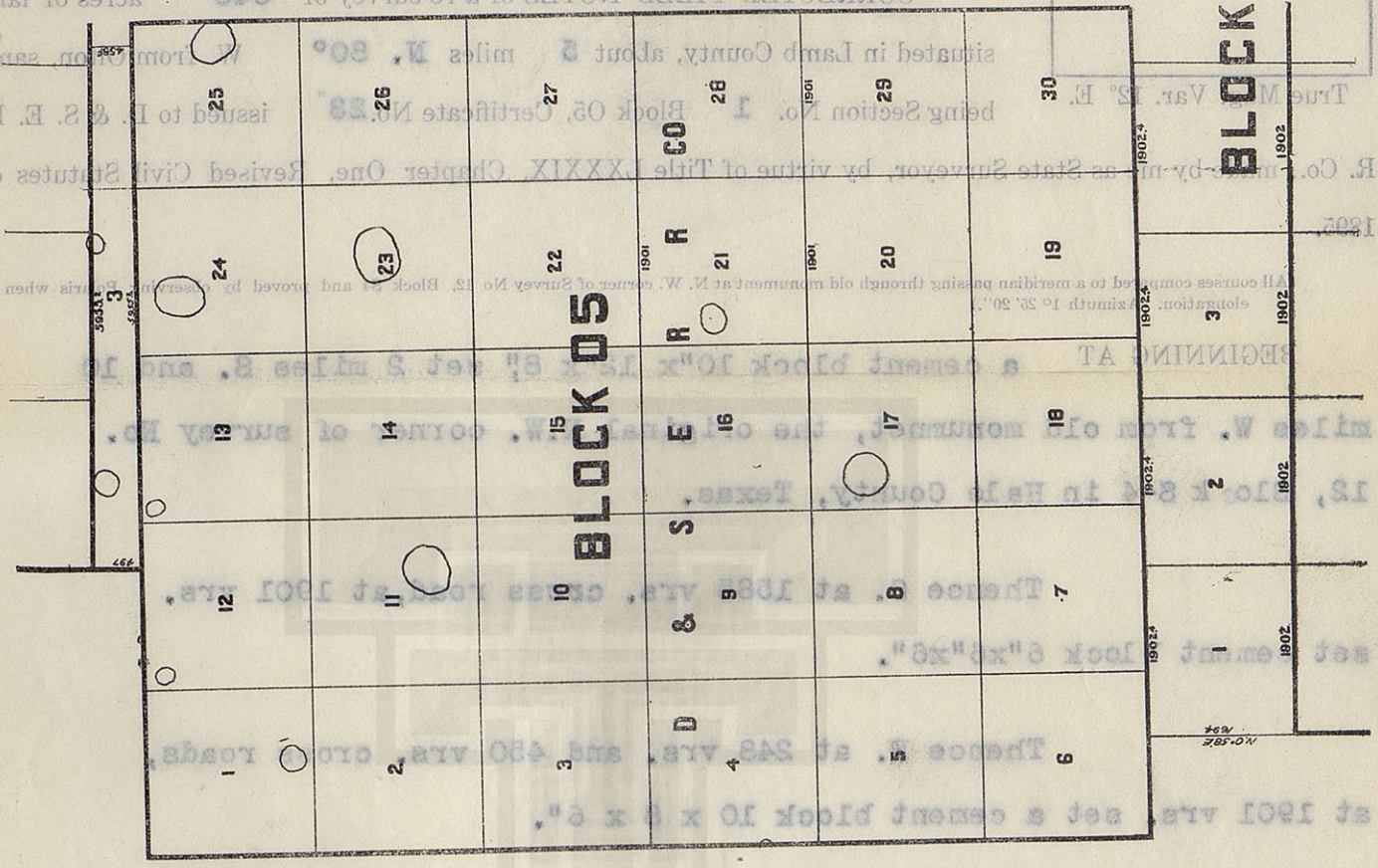
W. J. WILLIAMS, Transitman.
Bearings record true course.

Surveyed with Buff Solar Transit No. 6741

Thence W. 1901 vrs. to the place of beginning.

and a place of plunger mark rod.

Thence N. 1901 vrs. to a cement block 8 x 6 x 4"



CORRECTED FIELD NOTES of a re-survey of 640 acres of land

Grantee: D. & S. E. R. R. Co.

Block No. 05.

Survey No. 1.

THE STATE OF TEXAS

LAMB COUNTY

OTHER SIDE
FOR PLAT SEE

FOR PLAT SEE
OTHER SIDE

THE STATE OF TEXAS

LAMB COUNTY

Survey No. **3.**

Block No. 05.

Grantee: D. & S. E. R. R. Co.

CORRECTED FIELD NOTES of a re-survey of **640** acres of land

situated in Lamb County, about **5** miles **S. 80°** W. from Olton, same
being Section No. **3** Block 05, Certificate No. **24** issued to D. & S. E. R.

R. Co., made by me as State Surveyor, by virtue of Title LXXXIX, Chapter One, Revised Civil Statutes of
1895.

(All courses compared to a meridian passing through old monument at N. W. corner of Survey No. 12, Block S4 and proved by observing Polaris when at
elongation. Azimuth $1^{\circ} 25' 20''$.)

BEGINNING AT a cement rock 14 x 14 x 6" ~~xxx 3 pits~~ set for the
S.W. corner of survey No. 2, this block.

Thence S. at 1901 vrs. set a cement rock 14 x 14 x 6"
and 3 pits.

Thence E. at 544 vrs. cross road, at 1901 vrs.
set a cement rock 14 x 8 x 5" and 2 pits.

Thence N. at 1901 vrs. set a cement rock 16 x 8 x 4"
and two pits.

Thence W. at 1553 vrs. cross read, at 1901 vrs.
the place of beginning.

Bearings record true course.

W. J. WILLIAMS, Transitman.

CLAYTON WILLIAMS, } Chain Carriers.
TOM MCGEE. }

I, W. D. TWICHELL, State Surveyor, do hereby certify that the foregoing re-survey is correct and that
it was made by me in the field, in accordance with law, and that the limits, boundaries and corners with the
marks, natural and artificial, are truly and correctly described in the foregoing plat and field notes.

Re-surveyed **2** day of August, 1909.

APPROVED:

W. D. Twichell
State Surveyor.

Commissioner General Land Office.

County.

Survey No. 190
Filed

File Clerk.

APPROVED: _____
Resurveyed _____
day of August, 1909.

Re-surveyed day of August, 1909.

W. J. WILLIAMS, Transition.

Bearings record true course.

Surveyed with Buff Solar Transit No. 6741

The place of bearing

Thence W. at 1553 vts. cross road, at 1901 vts.

...and now here

OTHER SIDE
FOR PLAT SEE

LAMB COUNTY

THE STATE OF TEXAS

Block No. 05.

Grantee: D. & S. E. R. R. Co.

CORRECTED FIELD NOTES of a re-survey of 640 acres of land

BLOCK 05

R D
S E
R R
CO

1 2 3 4 5 6 7 8 9 10 11 12 13 14 15 16 17 18 19 20 21 22 23 24 25 26 27 28 29 30

0 100 Feet

FOR PLAT SEE
OTHER SIDE

THE STATE OF TEXAS

LAMB COUNTY

Survey No. 5.

Block No. 05.

Grantee: D. & S. E. R. R. Co.

CORRECTED FIELD NOTES of a re-survey of 640 acres of land

situated in Lamb County, about 6 miles S. 51° W. from Olton, same
being Section No. 5 Block 05, Certificate No. 25 issued to D. & S. E. R.

R. Co., made by me as State Surveyor, by virtue of Title LXXXIX, Chapter One, Revised Civil Statutes of
1895.

(All courses compared to a meridian passing through old monument at N. W. corner of Survey No. 12, Block S4 and proved by observing Polaris when at
elongation. Azimuth 1° 25' 20".)

BEGINNING AT a cement rock and 2 pits set for the S.W. corner of
survey No. 4, this block.

Thence S. at 1901 vrs. set a cement rock and two
pits.

Thence E. at 1901 vrs. set a cement rock 10 x 6 x 6"
and 2 pits.

Thence N. at 1901 vrs. set a cement rock and 2
pits, the S.E. corner of Survey No. 4.

Thence W. 1901 vrs. to the place of beginning.

Surveyed with Bull Solar Transit No. 6741

Bearings record true course.

W. J. WILLIAMS, Transitman.

CLAYTON WILLIAMS, } Chain Carriers.
TOM MCGEE.

I, W. D. TWICHELL, State Surveyor, do hereby certify that the foregoing re-survey is correct and that
it was made by me in the field, in accordance with law, and that the limits, boundaries and corners with the
marks, natural and artificial, are truly and correctly described in the foregoing plat and field notes.

Re-surveyed 2 day of August, 1909.

APPROVED:

W. D. Twichell
State Surveyor.

Commissioner General Land Office.

File No.

County.

Corrected Field Notes

Survey No.

Filed

190

Commissioner.

File Clerk.

Commissioner General Land Office.

APPROVED:

Re-surveyed 2 day of August, 1900.

W. J. WILLIAMS, Transcriber.

Bearings record true course.

Surveyed with Buft Solar Transit No. 6741

CLAYTON W. WILLIAMS, Chain Carrier.
TOM MOGGER, Chain Carrier.

THE STATE OF TEXAS

LAMB COUNTY

Grantee: D. & S. E. R. Co.

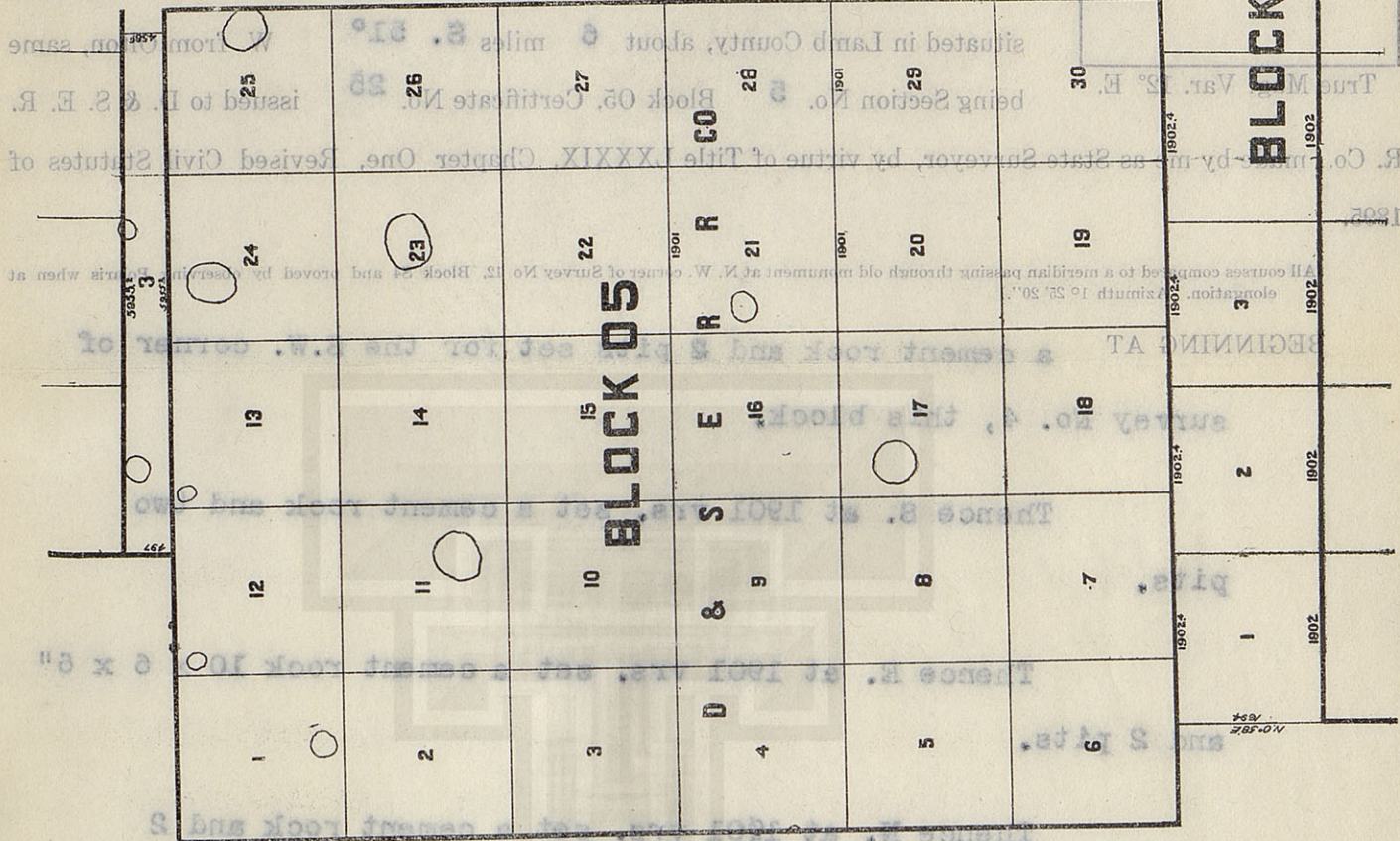
Block No. 05

Survey No. 5

acres of land

640

CORRECTED FIELD NOTES of a re-survey of



OTHER SIDE
FOR PLAT SEE

FOR PLAT SEE
OTHER SIDE

THE STATE OF TEXAS

LAMB COUNTY

Survey No. 7.

Block No. 05.

Grantee: D. & S. E. R. R. Co.

CORRECTED FIELD NOTES of a re-survey of 640 acres of land

situated in Lamb County, about 6 miles S. 45° W. from Olton, same
being Section No. 7 Block 05, Certificate No. 26 issued to D. & S. E. R.

R. Co., made by me as State Surveyor, by virtue of Title LXXXIX, Chapter One, Revised Civil Statutes of
1895.

(All courses compared to a meridian passing through old monument at N. W. corner of Survey No. 12, Block S4 and proved by observing Polaris when at
elongation. Azimuth 1° 25' 20".)

BEGINNING AT a cement rock 14 x 8 x 6" set for the S.E. corner of
Survey No. 6, this block.

Thence E. 1168.4 vrs. pass the N.E. corner of
Survey No. 1, Block B, at 1901 vrs. set a 5 gal. oil can
and wagon brake-lever.

Thence N. at 1901 vrs. set a gal. bucket, quart
bottle, 2 dry battery cells and 2 pits. Windmill bears
S. 84°4' E., windmill bears N. 17°10' E.

Thence W. at 1901 vrs. set a cement rock 10 x 6 x 6"
and 2 pits, the N.E. corner of Survey No. 6.

Thence S. 1901 vrs. to the place of beginning.

Bearings record true course.

W. J. WILLIAMS, Transitman.

CLAYTON WILLIAMS, } Chain Carriers.
TOM MCGEE.

I, W. D. TWICHELL, State Surveyor, do hereby certify that the foregoing re-survey is correct and that
it was made by me in the field, in accordance with law, and that the limits, boundaries and corners with the
marks, natural and artificial, are truly and correctly described in the foregoing plat and field notes.

Re-surveyed 2 day of August, 1909.

APPROVED:

W. D. Twichell
State Surveyor.

Commissioner General Land Office.

CCS

File No.

County.

Corrected Field Notes

Survey No.

Filed

190

Commissioner.

File Clerk.

Commissioner General Land Office.

APPROVED:

Re-surveyed 2 day of August, 1909.

I, W. D. TWICHELL, State Surveyor, do hereby certify that the foregoing re-survey is correct and that it was made by me in the field, in accordance with law, and that the limits, boundaries and corners with the marks, natural and artificial, are truly and correctly described in the foregoing plat and field notes.

W. J. WILLIAMS, Transcriber.
Bearings record true course.

Surveyed with Buff Solar Transit No. 6741

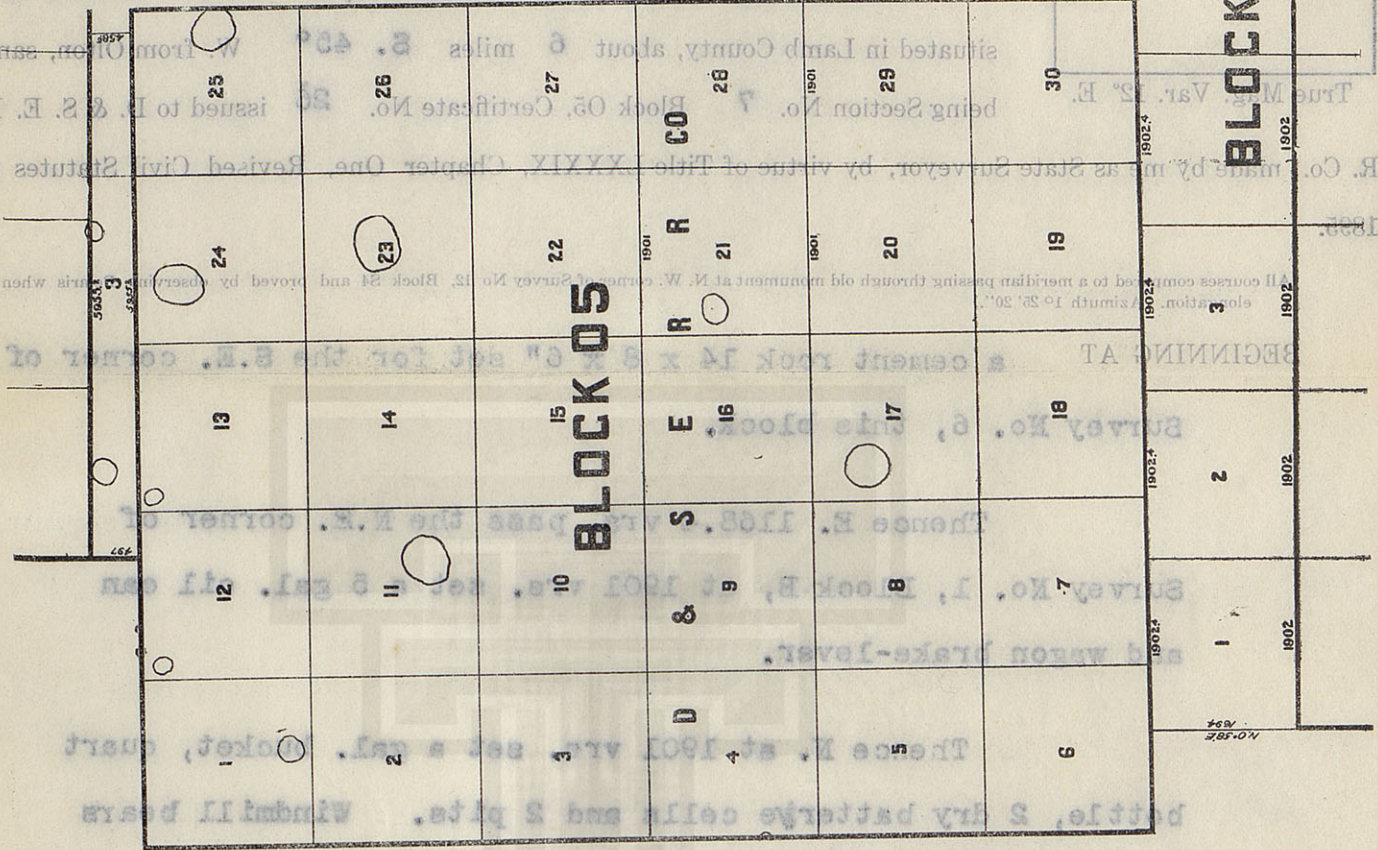
Thence S. 1901 var. to the place of beginning.

and S pits, the N.E. corner of Survey No. 6.

Thence W. at 1901 var. set a cement rock 10 x 6 x 6"

S. 84°4' E., windmill bears N. 17°10' R.

Thence N. at 1901 var. set a nail. Windmill bears
N. 84°4' E., windmill bears N. 17°10' R.



CORRECTED FIELD NOTES of a re-survey of

Grantee: D. & S. E. R. Co.

Block No. 05.

Survey No. 7.

THE STATE OF TEXAS

LAMB COUNTY

OTHER SIDE
FOR PLAT SEE

FOR PLAT SEE
OTHER SIDE

THE STATE OF TEXAS

LAMB COUNTY

Survey No. 9.

Block No. 05.

Grantee: D. & S. E. R. R. Co.

CORRECTED FIELD NOTES of a re-survey of 640 acres of land

situated in Lamb County, about 5 miles S. 65° W. from Olton, same

True Mag. Var. 12° E.
being Section No. 9 Block 05, Certificate No. 27 issued to D. & S. E. R. R. Co., made by me as State Surveyor, by virtue of Title LXXXIX, Chapter One, Revised Civil Statutes of 1895.

(All courses compared to a meridian passing through old monument at N. W. corner of Survey No. 12, Block S4 and proved by observing Polaris when at elongation. Azimuth 1° 25' 20".)

BEGINNING AT a gal. bucket, quart bottle, 2 dry battery cells
and 2 pits, set for the N.E. corner of Survey No. 8, this block.

Thence N. at 1901 vrs. set a cement rock 10 x 10 x 6"
and 2 pits.

Thence W. at 1901 vrs. set a cement rock 14 x 8 x 5"
and 2 pits, the N.E. corner of Survey No. 4.

Thence S. at 801 vrs. and 1796 vrs. cross roads,
at 1901 vrs. set a cement rock 12 x 12 x 8" and 2 pits.

Thence E. 1901 vrs. to the place of beginning.

Bearings record true course.

W. J. WILLIAMS, Transitman.

CLAYTON WILLIAMS, } Chain Carriers.
TOM MCGEE. }

I, W. D. TWICHELL, State Surveyor, do hereby certify that the foregoing re-survey is correct and that it was made by me in the field, in accordance with law, and that the limits, boundaries and corners with the marks, natural and artificial, are truly and correctly described in the foregoing plat and field notes.

Re-surveyed 2 day of August, 1909.

APPROVED:

W. D. Twichell
State Surveyor.

Commissioner General Land Office.

County.

Corrected Field Notes

Survey No.

Filed

Commissioner.

File Clerk.

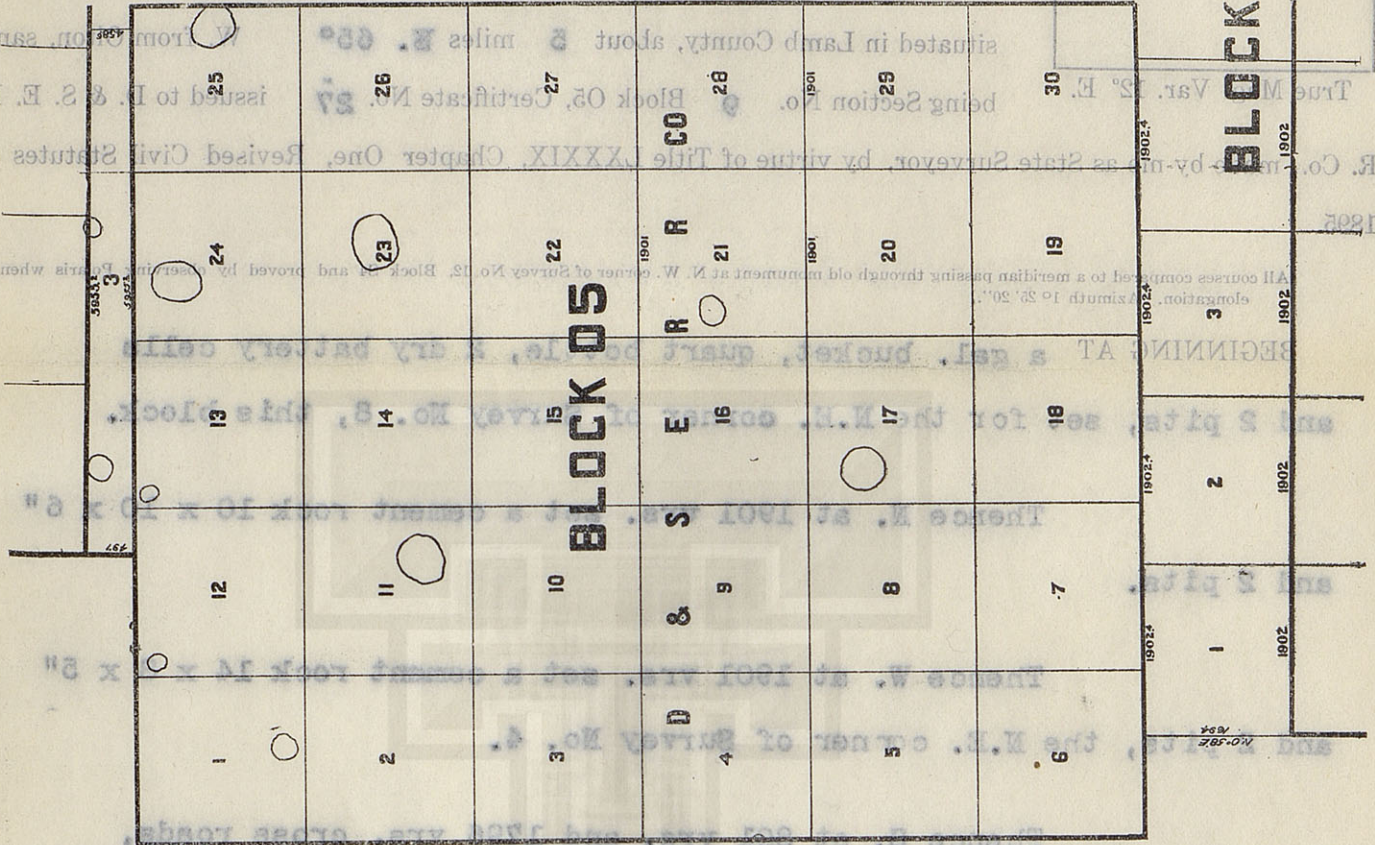
Commissioner General Land Office.

APPROVED:

Re-surveyed 2 day of August, 1909.

W. J. WILLIAMS, Transitionman.
Bearings record the course.

Surveyed with Buff Solar Transit No. 6741



FOR PLAT SEE
OTHER SIDE

THE STATE OF TEXAS

LAMB COUNTY

Survey No. 11.

Block No. 05.

Grantee: D. & S. E. R. R. Co.

CORRECTED FIELD NOTES of a re-survey of 640 acres of land

situated in Lamb County, about 4 miles W. from Olton, same

being Section No. 11 Block 05, Certificate No. 28 issued to D. & S. E. R. R. Co., made by me as State Surveyor, by virtue of Title LXXXIX, Chapter One, Revised Civil Statutes of 1895.

(All courses compared to a meridian passing through old monument at N. W. corner of Survey No. 12, Block S4 and proved by observing Polaris when at elongation. Azimuth $1^{\circ} 25' 20''$.)

BEGINNING AT a cement rock 14 x 12 x 7" and 2 pits set for the N.E. corner of survey No. 10, this block?

Thence N. at 1901 vrs. set a cement rock 8 x 6 x 4".

Thence W. at 1901 vrs. set a cement rock 10 x 8 x 6", the N.E. corner of survey No. 2.

Thence S. at 1901 vrs. set a cement rock 16 x 8 x 4" and 2 pits.

Thence E. 1901 vrs. to the place of beginning.

Bearings record true course.

W. J. WILLIAMS, Transitman.

CLAYTON WILLIAMS, } Chain Carriers.
TOM MCGEE. }

I, W. D. TWICHELL, State Surveyor, do hereby certify that the foregoing re-survey is correct and that it was made by me in the field, in accordance with law, and that the limits, boundaries and corners with the marks, natural and artificial, are truly and correctly described in the foregoing plat and field notes.

Re-surveyed 2 day of August, 1909.

APPROVED:

W. D. Twichell
State Surveyor.

Commissioner General Land Office.

2005

File No.

County.

Corrected Field Notes

Survey No.

Filed

190

Commissioner.

File Clerk.

Commissioner General Land Office.

APPROVED:

Re-surveyed 2 day of August, 1903.

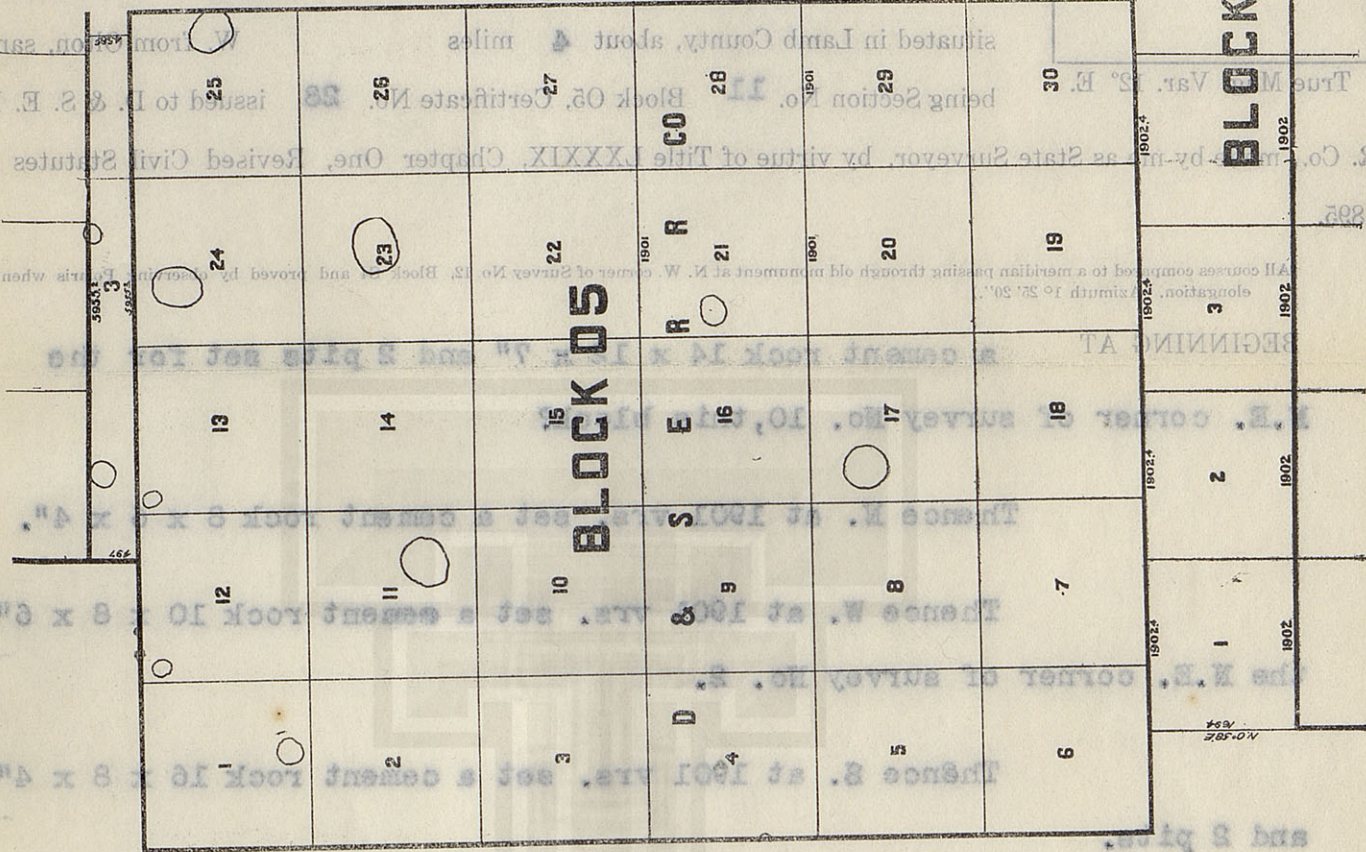
I, W. D. TWICHELL, State Surveyor, do hereby certify that the foregoing re-survey is correct and that it was made by me in the field, in accordance with law, and that the limits, boundaries and corners with the marks, natural and artificial, are truly and correctly described in the foregoing plat and field notes.

CLAYTON WILLIAMS, Chain Carriers.
TOM MCGEE

Surveyed with Buff Solar Transit No. 6741

W. J. WILLIAMS, Transcriber.
Bearings record true course.

Thence N. 1901 yrs. to the place of beginning.



FOR PLAT SEE
OTHER SIDE

THE STATE OF TEXAS

LAMB COUNTY

Survey No. **13.**

Block No. 05.

Grantee: D. & S. E. R. R. Co.

CORRECTED FIELD NOTES of a re-survey of **640** acres of land

situated in Lamb County, about **3** miles **N. 70°** W. from Olton, same

being Section No. **13** Block 05, Certificate No. **29** issued to D. & S. E. R.

R. Co., made by me as State Surveyor, by virtue of Title LXXXIX, Chapter One, Revised Civil Statutes of 1895.

(All courses compared to a meridian passing through old monument at N. W. corner of Survey No. 12, Block S4 and proved by observing Polaris when at elongation. Azimuth $1^{\circ} 25' 20''$.)

BEGINNING AT

a cement rock 15 x 8 x 4" set for the N.E. corner of survey No. 12, this block.

Thence E. at 1901 vrs. set a cement rock 12 x 10 x 8".

Thence S. at 1901 vrs. set a cement rock 8 x 6 x 6".

Thence W. at 1901 vrs. set a cement rock 8 x 6 x 4,
the S.E. corner of survey No. 12.

Thence N. 1901 vrs. to the place of beginning.

Bearings record true course.

W. J. WILLIAMS, Transitman.

CLAYTON WILLIAMS, } Chain Carriers.
TOM MCGEE. }

I, W. D. TWICHELL, State Surveyor, do hereby certify that the foregoing re-survey is correct and that it was made by me in the field, in accordance with law, and that the limits, boundaries and corners with the marks, natural and artificial, are truly and correctly described in the foregoing plat and field notes.

Re-surveyed **2** day of August, 1909.

APPROVED:

W. D. Twichell
State Surveyor.

Commissioner General Land Office.

CCS

File No. _____

County. _____

Corrected Field Notes

Survey No. 190

Filed _____

Commissioner. _____

File Clerk. _____

Commissioner General Land Office.

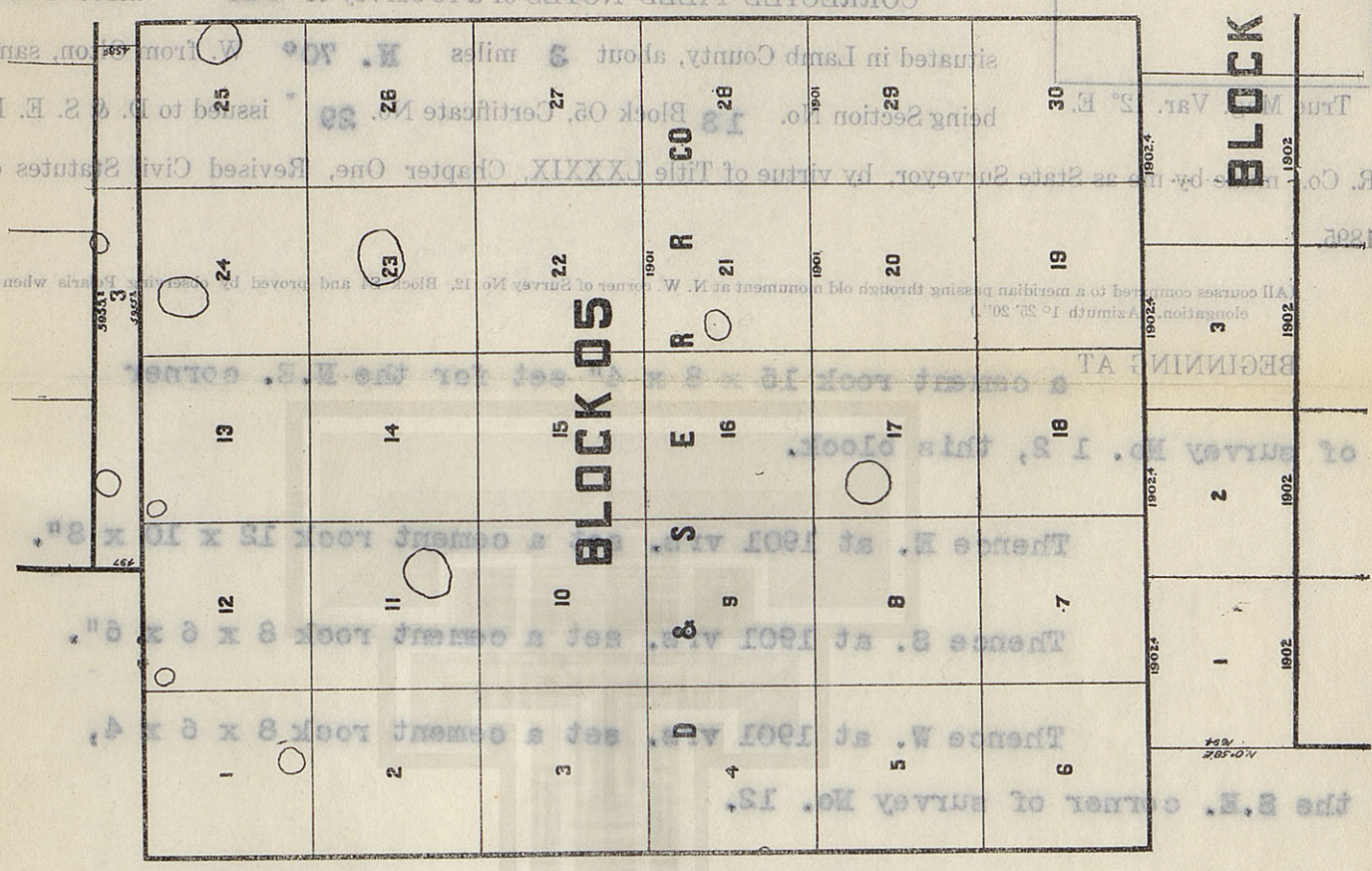
Re-surveyed _____ day of August, 1903.

APPROVED: _____

W. J. WILLIAMS, Transcriber.

Bearings record true course.

Surveyed with Buff Solar Transit No. 6741



THE STATE OF TEXAS

LAMB COUNTY

Grantee: D. & S. E. R. Co.

Block No. 05.

Survey No. 13.

FOR PLAT SEE

OTHER SIDE

CORRECTED FIELD NOTES of a re-survey of 640

acres of land

FOR PLAT SEE
OTHER SIDE

THE STATE OF TEXAS

LAMB COUNTY

Survey No. **15**

Block No. 05.

Grantee: D. & S. E. R. R. Co.

CORRECTED FIELD NOTES of a re-survey of **640** acres of land

situated in Lamb County, about **3** miles **S. 70°** W. from Olton, same
being Section No. **15** Block 05, Certificate No. **30** issued to D. & S. E. R.

R. Co., made by me as State Surveyor, by virtue of Title LXXXIX, Chapter One, Revised Civil Statutes of
1895.

(All courses compared to a meridian passing through old monument at N. W. corner of Survey No. 12, Block S4 and proved by observing Polaris when at
elongation. Azimuth $1^{\circ} 25' 20''$.)

BEGINNING AT a cement rock 13 x 8 x 6" and 2 pits set for the
S.E. corner of survey No. 14, this block.

Thence S. at 1901 vrs. set gal. bucket, quart cottle,
2 dry battery cells and 2 pits.

Thence W at 1901 vrs. set a cement rock 10 x 10 x 6"
and 2 pits.

Thence N. at 1901 vrs. set a cement rock 14 x 12 x 7"
and 2 pits.

Thence E. at 1600 vrs. to 1800 vrs. cross lake, at
1901 vrs. the place of beginning.

Surveyed with Bull Solar Transit No. 0741

Bearings record true course.

W. J. WILLIAMS, Transitman.

CLAYTON WILLIAMS, } Chain Carriers.
TOM MCGEE. }

I, W. D. TWICHELL, State Surveyor, do hereby certify that the foregoing re-survey is correct and that
it was made by me in the field, in accordance with law, and that the limits, boundaries and corners with the
marks, natural and artificial, are truly and correctly described in the foregoing plat and field notes.

Re-surveyed **2** day of August, 1909.

APPROVED:

W. D. Twichell
State Surveyor.

Commissioner General Land Office.

卷四

FOR PLAT SEE
OTHER SIDE

THE STATE OF TEXAS

LAMB COUNTY

Survey No. 17

Block No. 05.

Grantee: D. & S. E. R. R. Co.

CORRECTED FIELD NOTES of a re-survey of 640 acres of land

situated in Lamb County, about 4 miles S. 45° W. from Olton, same

being Section No. 17 Block 05, Certificate No. 31 issued to D. & S. E. R.

R. Co., made by me as State Surveyor, by virtue of Title LXXXIX, Chapter One, Revised Civil Statutes of 1895.

(All courses compared to a meridian passing through old monument at N. W. corner of Survey No. 12, Block S4 and proved by observing Polaris when at elongation. Azimuth 1° 25' 20".)

BEGINNING AT

a gal. bucket, quart bottle, 3 dry battery cells,
and 2 pits set for the S.E. corner of survey No. 16, this block.

Thence S. at 1901 vrs. set a gal. bucket, quart
bottle, a dry battery cell and 2 pits.

Thence W. at 1901 vrs. set a gal. bucket, quart bottle,
2 dry battery cells, and 2 pits. A windmill bears N. 17° 10' E., another
windmill bears N. 52° 57' W. A furrow bears 15 vrs. N., a ditch
bears 7 vrs. W. and trails bear E. 26 vrs.

Thence N. at 1901 vrs. set a gal. bucket, quart
bottle, 2 dry battery cells, and 2 pits.

Thence E. 1901 vrs. to the place of beginning.

Bearings record true course.

W. J. WILLIAMS, Transitman.

CLAYTON WILLIAMS, } Chain Carriers.
TOM MCGEE.

I, W. D. TWICHELL, State Surveyor, do hereby certify that the foregoing re-survey is correct and that it was made by me in the field, in accordance with law, and that the limits, boundaries and corners with the marks, natural and artificial, are truly and correctly described in the foregoing plat and field notes.

Re-surveyed 2 day of August, 1909.

APPROVED:

W. D. Twichell
State Surveyor.

Commissioner General Land Office.

THE STATE OF TEXAS

LAMB COUNTY

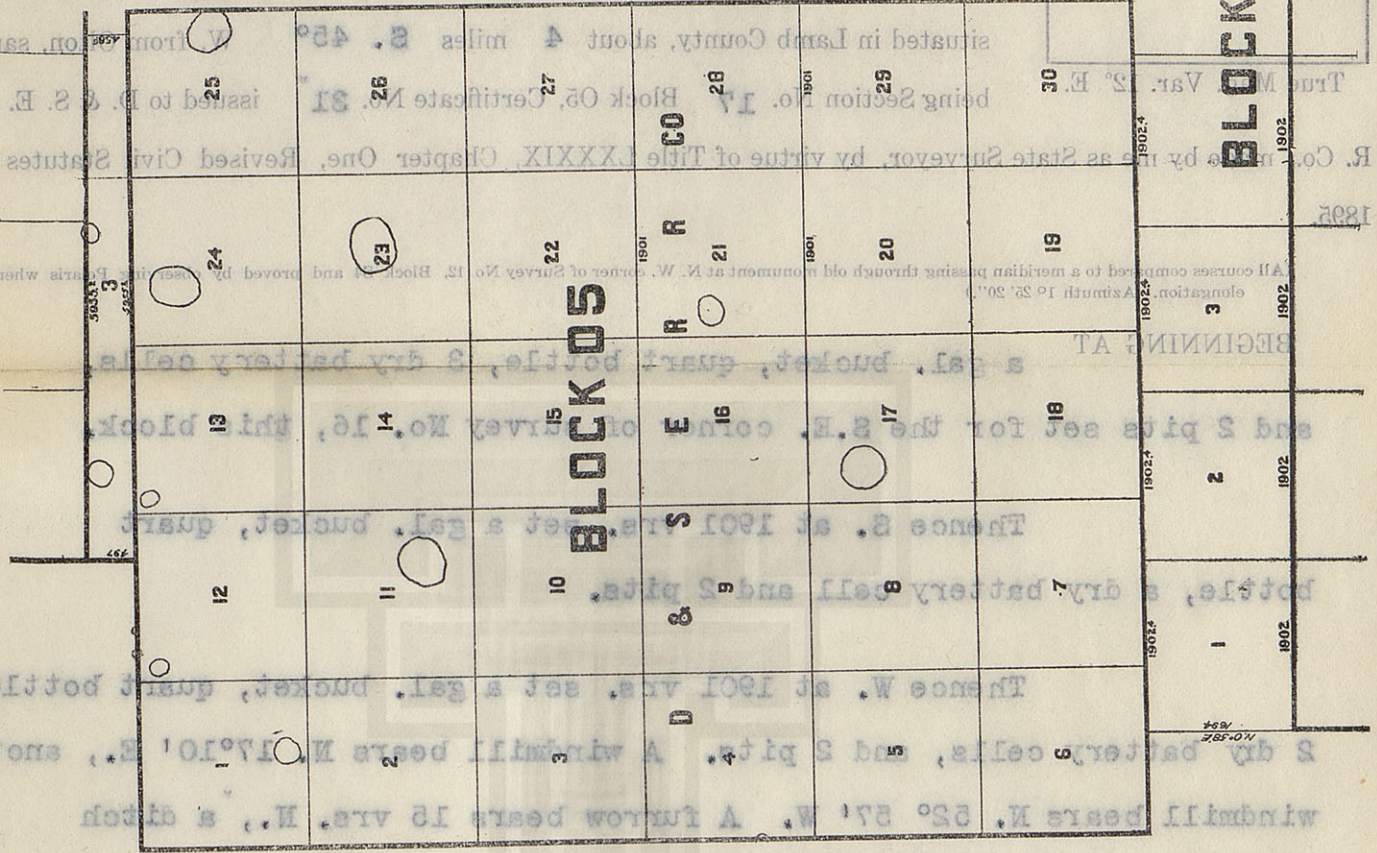
Grantee: D. & S. E. R. Co.

Block No. 05.

Survey No. 17

FOR PLAT SEE
OTHER SIDE

CORRECTED FIELD NOTES of a re-survey of 640 acres of land



Thence N. at 1901 vrs. set a gal. bucket, quart

bottle, 2 dry battery cells, and 2 pits.

Thence E. 1901 vrs. to the place of beginning.

Surveyed with Buff Solar Transit No. 6741

W. J. Williams, Transcriber.
Bearings record true course.

I, W. D. TWICHELL, State Surveyor, do hereby certify that the foregoing re-survey is correct and that it was made by me in the field, in accordance with law, and that the limits, boundaries and corners with the marks, natural and artificial, are truly and correctly described in the foregoing plat and field notes.
Re-surveyed 2 day of August, 1909.

APPROVED:

Commissioner General Land Office.

File No. _____
County. _____
Corrected Field Notes
Survey No. _____
Filed 190 _____
Commissioner.
File Clerk.

THE STATE OF TEXAS

HALE COUNTY

Survey No. 18

Block No. B.

Grantee: R. M. Thompson.

FOR PLAT SEE
OTHER SIDE

CORRECTED FIELD NOTES of a re-survey of 529.4 acres of land situated in Hale County, about 23 miles S. 60° W. from Plainview, same

True Mag. Var. 12° E. being Section No. 18 Block B, Certificate No. issued to R. M. Thompson made by me as State Surveyor, by virtue of Title LXXXIX, Chapter One, Revised Civil Statutes of 1895.

(All courses compared to a meridian passing through East line of section No. 31, Block B and proved by observing Polaris when at elongation. Azimuth 1° 25' 26".)

BEGINNING AT at cement rock 10x6x6" in field set for the S.E. corner of section No. 23, this block;

Thence S. 89° 2' E. 239 varas to beginning corner of this survey;

Thence S. 89° 2' E. at 12.6 varas set piece of Buck Stove and 3 pits, at 1662 varas set a cement rock 12x10x8" and 3 pits for the S.W. corner of section No. 21, this block, at 2079.8 varas set stake in the west line of section No. 65, Block A.3;

Thence S. 0° 5' W. at 591.1 varas 4 old pits and iron rod set by State Surveyor J. H. Parks for the S.W. corner of said section No. 65;

Thence S. 89° 49' E. at 1024.9 varas point in the South line of said section No. 65, from which a casting marked D. 56 and 3 pits bear N. 0° 58' E. 577 varas;

Thence S. 0° 58' W. at 232.3 varas set 1/2" iron pipe, 2x4" and 3 pits, at 234.3 varas cross fence, at 557.2 varas point in the north line of section No. 12, Block D. 10, 71.7 varas from a piece of buggy tire set for its N.E. Corner;

Thence S. 89° 16' W. 902.5 varas;

Thence N. 89° 2' W. 2211 varas;

Thence N. 0° 58' E. at 300 varas pass 27.3 varas to left of 1/2" pipe, at 1161 varas to the place of beginning.

Bearings record true course.

W. J. WILLIAMS, Transitman.

CLAYTON WILLIAMS, } Chain Carriers.
TOM MCGEE.

I, W. D. TWICHELL, State Surveyor, do hereby certify that the foregoing re-survey is correct and that it was made by me in the field, in accordance with law, and that the limits, boundaries and corners with the marks, natural and artificial, are truly and correctly described in the foregoing plat and field notes.

Re-surveyed day of August, 1909.

APPROVED:

W. D. Twichell
State Surveyor.

Commissioner General Land Office.

IX
E
E

Corrected Field Notes

Survey No. _____

Filed _____ 190_____

File Clerk.

APPROVED: _____
Resurveyed _____
day of August, 1909.

W. J. WILLIAMS, Transition.

Bearings record true course.

Surveyed with Buff Solar Transit No. 6741

Surveyed with Buff Solar Transit No. 6741

		1901	TOTAL	1901	3567	1901	2
--	--	------	-------	------	------	------	---

MPSS

SI	3	2	2	2	J.L.	10	9
55x4	מסכת תרא	-					

35	01	2	4	0	3	King
----	----	---	---	---	---	------

[illegible][illegible][illegible]

7

1900 1905 1910 1915 1920 1925 1930 1935 1940 1945 1950 1955 1960 1965 1970 1975 1980 1985 1990 1995 2000 2005 2010 2015 2020 2025 2030 2035 2040 2045 2050 2055 2060 2065 2070 2075 2080 2085 2090 2095 2100 2105 2110 2115 2120 2125 2130 2135 2140 2145 2150 2155 2160 2165 2170 2175 2180 2185 2190 2195 2200 2205 2210 2215 2220 2225 2230 2235 2240 2245 2250 2255 2260 2265 2270 2275 2280 2285 2290 2295 2300 2305 2310 2315 2320 2325 2330 2335 2340 2345 2350 2355 2360 2365 2370 2375 2380 2385 2390 2395 2400 2405 2410 2415 2420 2425 2430 2435 2440 2445 2450 2455 2460 2465 2470 2475 2480 2485 2490 2495 2500 2505 2510 2515 2520 2525 2530 2535 2540 2545 2550 2555 2560 2565 2570 2575 2580 2585 2590 2595 2600 2605 2610 2615 2620 2625 2630 2635 2640 2645 2650 2655 2660 2665 2670 2675 2680 2685 2690 2695 2700 2705 2710 2715 2720 2725 2730 2735 2740 2745 2750 2755 2760 2765 2770 2775 2780 2785 2790 2795 2800 2805 2810 2815 2820 2825 2830 2835 2840 2845 2850 2855 2860 2865 2870 2875 2880 2885 2890 2895 2900 2905 2910 2915 2920 2925 2930 2935 2940 2945 2950 2955 2960 2965 2970 2975 2980 2985 2990 2995 3000 3005 3010 3015 3020 3025 3030 3035 3040 3045 3050 3055 3060 3065 3070 3075 3080 3085 3090 3095 3100 3105 3110 3115 3120 3125 3130 3135 3140 3145 3150 3155 3160 3165 3170 3175 3180 3185 3190 3195 3200 3205 3210 3215 3220 3225 3230 3235 3240 3245 3250 3255 3260 3265 3270 3275 3280 3285 3290 3295 3300 3305 3310 3315 3320 3325 3330 3335 3340 3345 3350 3355 3360 3365 3370 3375 3380 3385 3390 3395 3400 3405 3410 3415 3420 3425 3430 3435 3440 3445 3450 3455 3460 3465 3470 3475 3480 3485 3490 3495 3500 3505 3510 3515 3520 3525 3530 3535 3540 3545 3550 3555 3560 3565 3570 3575 3580 3585 3590 3595 3600 3605 3610 3615 3620 3625 3630 3635 3640 3645 3650 3655 3660 3665 3670 3675 3680 3685 3690 3695 3700 3705 3710 3715 3720 3725 3730 3735 3740 3745 3750 3755 3760 3765 3770 3775 3780 3785 3790 3795 3800 3805 3810 3815 3820 3825 3830 3835 3840 3845 3850 3855 3860 3865 3870 3875 3880 3885 3890 3895 3900 3905 3910 3915 3920 3925 3930 3935 3940 3945 3950 3955 3960 3965 3970 3975 3980 3985 3990 3995 4000 4005 4010 4015 4020 4025 4030 4035 4040 4045 4050 4055 4060 4065 4070 4075 4080 4085 4090 4095 4100 4105 4110 4115 4120 4125 4130 4135 4140 4145 4150 4155 4160 4165 4170 4175 4180 4185 4190 4195 4200 4205 4210 4215 4220 4225 4230 4235 4240 4245 4250 4255 4260 4265 4270 4275 4280 4285 4290 4295 4300 4305 4310 4315 4320 4325 4330 4335 4340 4345 4350 4355 4360 4365 4370 4375 4380 4385 4390 4395 4400 4405 4410 4415 4420 4425 4430 4435 4440 4445 4450 4455 4460 4465 4470 4475 4480 4485 4490 4495 4500 4505 4510 4515 4520 4525 4530 4535 4540 4545 4550 4555 4560 4565 4570 4575 4580 4585 4590 4595 4600 4605 4610 4615 4620 4625 4630 4635 4640 4645 4650 4655 4660 4665 4670 4675 4680 4685 4690 4695 4700 4705 4710 4715 4720 4725 4730 4735 4740 4745 4750 4755 4760 4765 4770 4775 4780 4785 4790 4795 4800 4805 4810 4815 4820 4825 4830 4835 4840 4845 4850 4855 4860 4865 4870 4875 4880 4885 4890 4895 4900 4905 4910 4915 4920 4925 4930 4935 4940 4945 4950 4955 4960 4965 4970 4975 4980 4985 4990 4995 5000 5005 5010 5015 5020 5025 5030 5035 5040 5045 5050 5055 5060 5065 5070 5075 5080 5085 5090 5095 5100 5105 5110 5115 5120 5125 5130 5135 5140 5145 5150 5155 5160 5165 5170 5175 5180 5185 5190 5195 5200 5205 5210 5215 5220 5225 5230 5235 5240 5245 5250 5255 5260 5265 5270 5275 5280 5285 5290 5295 5300 5305 5310 5315 5320 5325 5330 5335 5340 5345 5350 5355 5360 5365 5370 5375 5380 5385 5390 5395 5400 5405 5410 5415 5420 5425 5430 5435 5440 5445 5450 5455 5460 5465 5470 5475 5480 5485 5490 5495 5500 5505 5510 5515 5520 5525 5530 5535 5540 5545 5550 5555 5560 5565 5570 5575 5580 5585 5590 5595 5600 5605 5610 5615 5620 5625 5630 5635 5640 5645 5650 5655 5660 5665 5670 5675 5680 5685 5690 5695 5700 5705 5710 5715 5720 5725 5730 5735 5740 5745 5750 5755 5760 5765 5770 5775 5780 5785 5790 5795 5800 5805 5810 5815 5820 5825 5830 5835 5840 5845 5850 5855 5860 5865 5870 5875 5880 5885 5890 5895 5900 5905 5910 5915 5920 5925 5930 5935 5940 5945 5950 5955 5960 5965 5970 5975 5980 5985 5

JFD
 21
 24
 19087
 55
 RCO
 LKK
 47E
 09
 5
 19037
 202
 JFS090
 JFS090

1903	1902	1901	1900	1899	1898	1897	1896	1895	1894	1893	1892	1891	1890	1889	1888	1887	1886	1885	1884	1883	1882	1881	1880	1879	1878	1877	1876	1875	1874	1873	1872	1871	1870	1869	1868	1867	1866	1865	1864	1863	1862	1861	1860	1859	1858	1857	1856	1855	1854	1853	1852	1851	1850	1849	1848	1847	1846	1845	1844	1843	1842	1841	1840	1839	1838	1837	1836	1835	1834	1833	1832	1831	1830	1829	1828	1827	1826	1825	1824	1823	1822	1821	1820	1819	1818	1817	1816	1815	1814	1813	1812	1811	1810	1809	1808	1807	1806	1805	1804	1803	1802	1801	1800	1799	1798	1797	1796	1795	1794	1793	1792	1791	1790	1789	1788	1787	1786	1785	1784	1783	1782	1781	1780	1779	1778	1777	1776	1775	1774	1773	1772	1771	1770	1769	1768	1767	1766	1765	1764	1763	1762	1761	1760	1759	1758	1757	1756	1755	1754	1753	1752	1751	1750	1749	1748	1747	1746	1745	1744	1743	1742	1741	1740	1739	1738	1737	1736	1735	1734	1733	1732	1731	1730	1729	1728	1727	1726	1725	1724	1723	1722	1721	1720	1719	1718	1717	1716	1715	1714	1713	1712	1711	1710	1709	1708	1707	1706	1705	1704	1703	1702	1701	1700	1699	1698	1697	1696	1695	1694	1693	1692	1691	1690	1689	1688	1687	1686	1685	1684	1683	1682	1681	1680	1679	1678	1677	1676	1675	1674	1673	1672	1671	1670	1669	1668	1667	1666	1665	1664	1663	1662	1661	1660	1659	1658	1657	1656	1655	1654	1653	1652	1651	1650	1649	1648	1647	1646	1645	1644	1643	1642	1641	1640	1639	1638	1637	1636	1635	1634	1633	1632	1631	1630	1629	1628	1627	1626	1625	1624	1623	1622	1621	1620	1619	1618	1617	1616	1615	1614	1613	1612	1611	1610	1609	1608	1607	1606	1605	1604	1603	1602	1601	1600	1599	1598	1597	1596	1595	1594	1593	1592	1591	1590	1589	1588	1587	1586	1585	1584	1583	1582	1581	1580	1579	1578	1577	1576	1575	1574	1573	1572	1571	1570	1569	1568	1567	1566	1565	1564	1563	1562	1561	1560	1559	1558	1557	1556	1555	1554	1553	1552	1551	1550	1549	1548	1547	1546	1545	1544	1543	1542	1541	1540	1539	1538	1537	1536	1535	1534	1533	1532	1531	1530	1529	1528	1527	1526	1525	1524	1523	1522	1521	1520	1519	1518	1517	1516	1515	1514	1513	1512	1511	1510	1509	1508	1507	1506	1505	1504	1503	1502	1501	1500	1499	1498	1497	1496	1495</
------	------	------	------	------	------	------	------	------	------	------	------	------	------	------	------	------	------	------	------	------	------	------	------	------	------	------	------	------	------	------	------	------	------	------	------	------	------	------	------	------	------	------	------	------	------	------	------	------	------	------	------	------	------	------	------	------	------	------	------	------	------	------	------	------	------	------	------	------	------	------	------	------	------	------	------	------	------	------	------	------	------	------	------	------	------	------	------	------	------	------	------	------	------	------	------	------	------	------	------	------	------	------	------	------	------	------	------	------	------	------	------	------	------	------	------	------	------	------	------	------	------	------	------	------	------	------	------	------	------	------	------	------	------	------	------	------	------	------	------	------	------	------	------	------	------	------	------	------	------	------	------	------	------	------	------	------	------	------	------	------	------	------	------	------	------	------	------	------	------	------	------	------	------	------	------	------	------	------	------	------	------	------	------	------	------	------	------	------	------	------	------	------	------	------	------	------	------	------	------	------	------	------	------	------	------	------	------	------	------	------	------	------	------	------	------	------	------	------	------	------	------	------	------	------	------	------	------	------	------	------	------	------	------	------	------	------	------	------	------	------	------	------	------	------	------	------	------	------	------	------	------	------	------	------	------	------	------	------	------	------	------	------	------	------	------	------	------	------	------	------	------	------	------	------	------	------	------	------	------	------	------	------	------	------	------	------	------	------	------	------	------	------	------	------	------	------	------	------	------	------	------	------	------	------	------	------	------	------	------	------	------	------	------	------	------	------	------	------	------	------	------	------	------	------	------	------	------	------	------	------	------	------	------	------	------	------	------	------	------	------	------	------	------	------	------	------	------	------	------	------	------	------	------	------	------	------	------	------	------	------	------	------	------	------	------	------	------	------	------	------	------	------	------	------	------	------	------	------	------	------	------	------	------	------	------	------	------	------	------	------	------	------	------	------	------	------	------	------	------	------	------	------	------	------	------	------	------	--------

[illegible]

342

The floor plan depicts a large, symmetrical building with a central corridor. The plan is divided into several main sections, each with its own set of rooms and specialized areas. The central corridor runs horizontally through the middle of the building, providing access to various rooms on both sides. The rooms are labeled with numbers and names, indicating their function. The plan also shows a large central hall, several smaller meeting rooms, and specialized areas like a 'Library' and 'Reading Room'. The drawing is a black and white line drawing with extensive labeling of rooms and areas.

[illegible][illegible]

FOR PLAT SEE
OTHER SIDE

THE STATE OF TEXAS

LAMB COUNTY

Survey No. 19.

Block No. 05.

Grantee: D. & S. E. R. R. Co.

CORRECTED FIELD NOTES of a re-survey of 640 acres of land

situated in Lamb County, about 4 miles S. 30° W. from Olton, same
being Section No. 19 Block 05, Certificate No. 32 issued to D. & S. E. R.

R. Co., made by me as State Surveyor, by virtue of Title LXXXIX, Chapter One, Revised Civil Statutes of
1895.

(All courses compared to a meridian passing through old monument at N. W. corner of Survey No. 12, Block S4 and proved by observing Polaris when at
elongation. Azimuth 1° 25' 20".)

BEGINNING AT a plunger coupling and two stones set for the S.E.
corner of survey No. 18, this block.

Thence E. at 1171.2 vrs. pass a cedar stake 4" x 24"
and 3 pits, the N.E. corner of survey No. 3, Block B, at 1901 vrs.
set 2" angle iron.

Thence N. at 1901 vrs. set oil can, quart bottle
and 2 pits, a windmill bears N. 71° 9' W., windmill bears N. 5° 3' W.,
windmill bears S. 57° 49' E.

Thence W. at 1901 vrs. set a gal. bucket, dry
battery cell, quart bottle and 2 pits, the N.E. corner of survey
No. 18.

Thence S. at 1506 vrs. top pf sand hill, at 1901 vrs.

Bearings record true course.

W. J. WILLIAMS, Transitman. the place of beginning.

CLAYTON WILLIAMS, } Chain Carriers.
TOM MCGEE. }

I, W. D. TWICHELL, State Surveyor, do hereby certify that the foregoing re-survey is correct and that
it was made by me in the field, in accordance with law, and that the limits, boundaries and corners with the
marks, natural and artificial, are truly and correctly described in the foregoing plat and field notes.

Re-surveyed 2 day of August, 1909.

APPROVED:

W. D. Twichell
State Surveyor.

Commissioner General Land Office.

THE STATE OF TEXAS

LAMB COUNTY

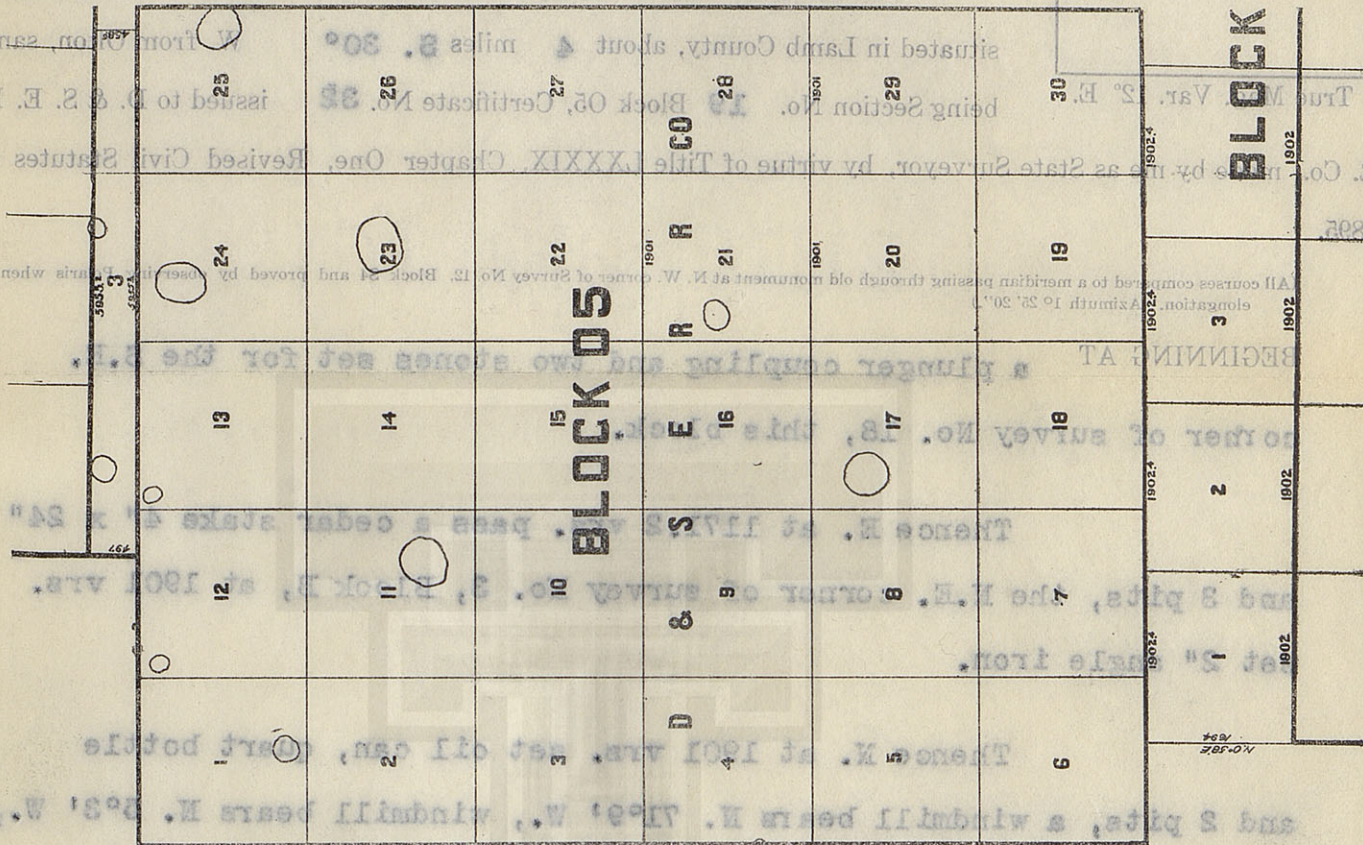
Grantee: D. & S. E. R. Co.

Block No. 05

Survey No. 18

FOR PLAT SEE
OTHER SIDE

CORRECTED FIELD NOTES of a re-survey of 840 acres of land



No. 18.
battery cell, quart bottle and 2 pits, the N.E. corner of survey
Thence W. at 1901 yrs. set a gal. bucket, dry

Surveyed with Bull Solar Transit No. 6741 at 1901 yrs.

W. J. WILLIAMS, Transitman.
Bearing record true course.

Re-surveyed 2 day of August, 1903.
I, W. D. TWICHELL, State Surveyor, do hereby certify that the foregoing re-survey is correct and that it was made by me in the field, in accordance with law, and that the limits, boundaries and corners with the marks, natural and artificial, are truly and correctly described in the foregoing plat and field notes.

APPROVED:

Commissioner General Land Office

Commissioner.
File Clerk.

Filed 190

Survey No.

Corrected Field Notes

County.

File No.

CCS

THE STATE OF TEXAS

HALE COUNTY

Survey No. 19

Block No. B.

Grantee: R. M. Thompson.

FOR PLAT SEE
OTHER SIDE

CORRECTED FIELD NOTES of a re-survey of 406 acres of land situated in Hale County, about 22 miles S. 58° W. from Plainview, same

True Mag. Var. 12° E. being Section No. 19 Block B, Certificate No. issued to R. M. Thompson made by me as State Surveyor, by virtue of Title LXXXIX, Chapter One, Revised Civil Statutes of 1895.

(All courses compared to a meridian passing through East line of section No. 31, Block B and proved by observing Polaris when at elongation. Azimuth 1° 25' 20".)

BEGINNING AT the intersection of the east line of section No. 18, this block with the south line of section No. 65, Block A.3, from which casting marked D.56 bears N.0°58'E. 577 varas;

Thence S.0°58'W. at 232.3 varas set 1/2" iron pipe, 2x4" and 3 pits, at 234.3 varas cross fence, at 557.2 varas point in the north line of section No. 12, Block B.10;

Thence N.39°16'E. at 71.7 varas set piece of buggy tire for the N.E. corner of said section No. 12; from which plunger coupling bears N.2°55'W. 54.6 varas;

Thence S.0°44'E. at 28.9 varas; to point in East line of said Section No. 12;

Thence S.89°2'E. at 960.3 varas set piece of iron and 3 pits under fence, at 1461.3 varas set strap of steel and 4 pits, 1/2" iron pipe and 4 old pits bear N.12°33'W. 108.3 varas, the N.E. corner of J.F. Sager S.F.;

Thence S.0°58'W. at 1072 varas set 1" iron pipe and 3 pits under fence, at 1084 varas set stake;

Thence S.39°2'E. at 485 varas cross fence, at 650 varas enter lake, at 817.5 varas set broken wagon spindle and 3 pits;

Thence N.0°58'E. at 1700.3 varas set piece of wire stretcher and the south line of section No. 64, Block A.3;

Thence N.39°49'W. at 1469.7 varas pass Parks 4 pits at S.W. corner of Sec. 64, at 2350.5 varas the place of beginning.

Bearings record true course. W. J. WILLIAMS, Transitman.

CLAYTON WILLIAMS, } Chain Carriers.
TOM MCGEE. }

I, W. D. TWICHELL, State Surveyor, do hereby certify that the foregoing re-survey is correct and that it was made by me in the field, in accordance with law, and that the limits, boundaries and corners with the marks, natural and artificial, are truly and correctly described in the foregoing plat and field notes.

Re-surveyed 2nd day of August, 1909.

APPROVED:

W. D. Twichell
State Surveyor.

Commissioner General Land Office.

File No.

County.

Corrected Field Notes

Survey No.

Filed

Commissioner.

File Clerk.

Commissioner General Land Office.

APPROVED:

Re-surveyed day of August 1909.

I, W. D. TWICHELL, State Surveyor, do hereby certify that the foregoing re-survey is correct and that it was made by me in the field, in accordance with law, and that the limits, boundaries and corners with the marks, natural and artificial, are truly and correctly described in the foregoing plat and field notes.

CLAYTON WILLIAMS, Chain Carrier.
Tom McGee

Surveyed with Buff Solar Transit No. 6741

W. J. WILLIAMS, Transman.

Bearings record true course.

and the south line of section No. 64, Block A.3, from which

lake, at 817.5 varas set broken wagon spindle and 8 pite;

Thence S. 39° 2' E. at 688 varas cross fence, at 650 varas enter

fence, at 1084 varas set stake;

Thence S. 2° 58' W. at 1072 varas set 1" iron pipe and 8 pite under

under fence, at 1461.3 varas set strip of steel and 4 pite, 1 1/2" iron pipe

and a old pile bear K. 12° 33' W. 100.3 varas, the N.E. corner of J.P. Sage-

var 8.1';

Thence S. 89° 15' E. at 11.7 varas set pile of buoy life for

line of section 1. 12 Block A.3; from which

Thence S. 89° 15' E. at 11.7 varas set pile of buoy life for

line of section 1. 12 Block A.3; from which

Thence S. 89° 15' E. at 11.7 varas set pile of buoy life for

line of section 1. 12 Block A.3; from which

Thence S. 89° 15' E. at 11.7 varas set pile of buoy life for

line of section 1. 12 Block A.3; from which

Thence S. 89° 15' E. at 11.7 varas set pile of buoy life for

line of section 1. 12 Block A.3; from which

Thence S. 89° 15' E. at 11.7 varas set pile of buoy life for

line of section 1. 12 Block A.3; from which

Thence S. 89° 15' E. at 11.7 varas set pile of buoy life for

line of section 1. 12 Block A.3; from which

Thence S. 89° 15' E. at 11.7 varas set pile of buoy life for

line of section 1. 12 Block A.3; from which

THE STATE OF TEXAS

HALE COUNTY

Survey No. 21

Block No. B.

Grantee: R. M. Thompson.

FOR PLAT SEE
OTHER SIDE

CORRECTED FIELD NOTES of a re-survey of 136 acres of land situated in Hale County, about 22 miles S. 60 W. from Plainview, same

True Mag. Var. 12° E. being Section No. 21 Block B, Certificate No. issued to R. M. Thompson made by me as State Surveyor, by virtue of Title LXXXIX, Chapter One, Revised Civil Statutes of 1895.

(All courses compared to a meridian passing through East line of section No. 31, Block B and proved by observing Polaris when at elongation. Azimuth $19^{\circ} 25' 20''$.)

BEGINNING AT cement rock $12 \times 10 \times 8$ and 3 pits set for the S.E. corner of section No. 22, this block; same being 950.5 varas $S. 89^{\circ} 2' E.$ from 3 old pits, the S.E. corner of Section No. 29, Block T.;

Thence $S. 89^{\circ} 2' E.$ at 417.3 varas set stake in the west line of section No. 65, Block A.3;

Thence $N. 0^{\circ} 5' E.$ at 1314.2 varas 4 old pits, cedar post and $\frac{1}{2}$ iron stay set by State Surveyor J.H. Parks for the N.W. corner of said section No. 65;

Thence $N. 0^{\circ} 11' E.$ at 536.6 varas set hackberry stake and 6" casting set in the west line of section No. 66, Block A.3;

Thence $N. 89^{\circ} 2' W.$ at 389.5 varas set wagon spindle and 2 pits;

Thence $S. 0^{\circ} 58' W.$ at 1901 varas the place of beginning.

Bearings record true course.

W. J. WILLIAMS, Transitman.

CLAYTON WILLIAMS, } Chain Carriers.
TOM MCGEE, }

I, W. D. TWICHELL, State Surveyor, do hereby certify that the foregoing re-survey is correct and that it was made by me in the field, in accordance with law, and that the limits, boundaries and corners with the marks, natural and artificial, are truly and correctly described in the foregoing plat and field notes.

Re-surveyed 2nd day of August, 1909.

APPROVED:

W. D. Twichell
State Surveyor.

Commissioner General Land Office.

File No.

County.

Corrected Field Notes

Survey No.

Filed

190

Commissioner.

File Clerk.

Commissioner General Land Office.

APPROVED:

Re-surveyed 2nd day of August, 1909.

marks, natural and artificial, are truly and correctly described in the foregoing plat and field notes.

Chain Carriers.

Tom McGee

Clayton Williams

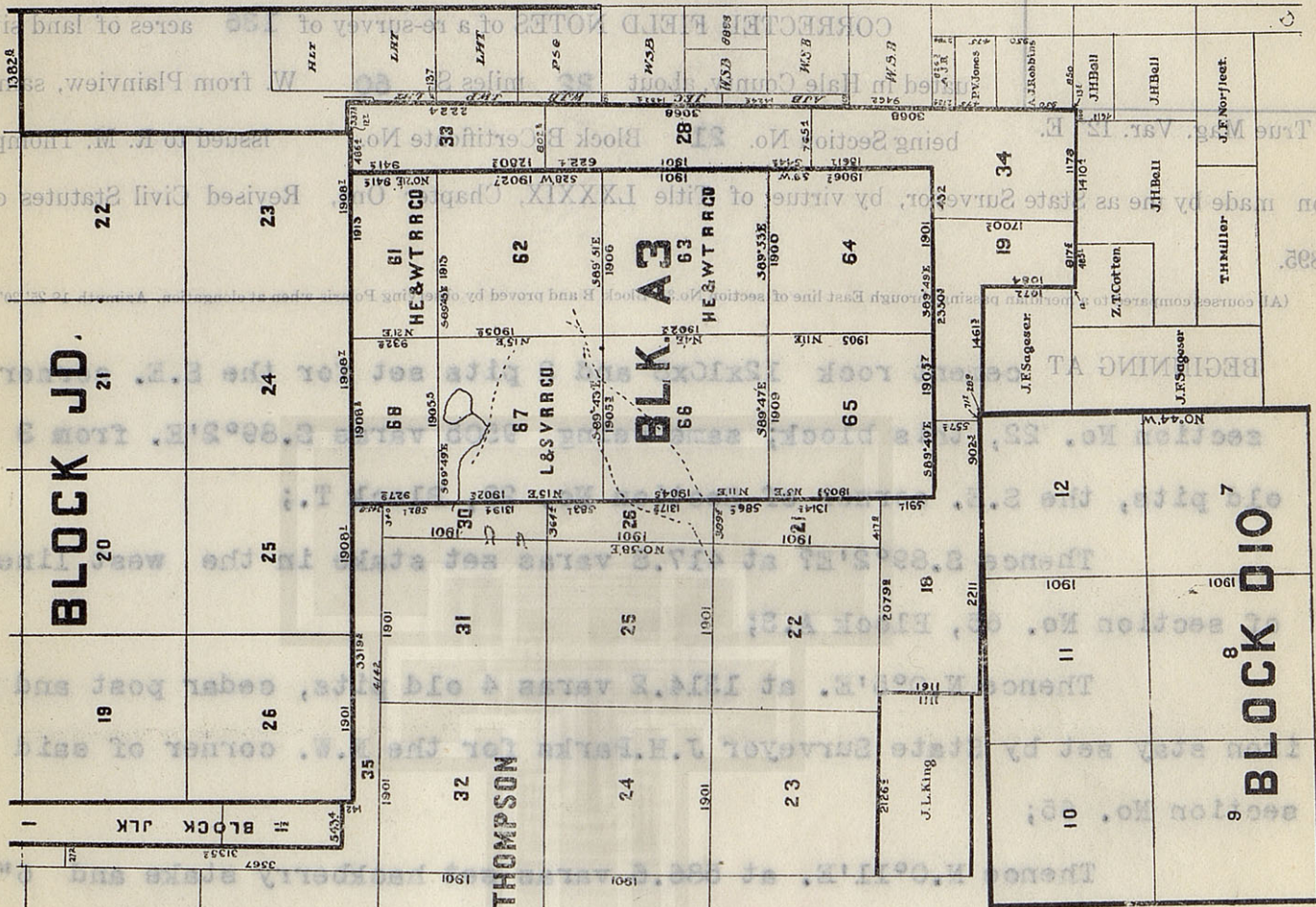
Surveyed with Buff Solar Transit No. 6741

W. J. Williams, Transmitter.
Bearing record true course.

Thence S. 0° 58' W. at 1901 varies the place of beginning.

Thence N. 89° 2' W. at 889.5 varies net wagon spindle and 2 paces

ceasting set in the west line of section No. 66, Block A.3;



Grantee: R. M. Thompson.

Block No. B.

Survey No. 21

HALE COUNTY

THE STATE OF TEXAS

FOR PLAT SEE
OTHER SIDE

FOR PLAT SEE
OTHER SIDE

THE STATE OF TEXAS

LAMB COUNTY

Survey No. **21**

Block No. O5.

Grantee: D. & S. E. R. R. Co.

CORRECTED FIELD NOTES of a re-survey of **640** acres of land situated in Lamb County, about **3** miles **S. 45°** W. from Olton, same being Section No. **21** Block O5, Certificate No. **33** issued to D. & S. E. R. R. Co., made by me as State Surveyor, by virtue of Title LXXXIX, Chapter One, Revised Civil Statutes of 1895.

(All courses compared to a meridian passing through old monument at N. W. corner of Survey No. 12, Block S4 and proved by observing Polaris when at elongation. Azimuth $1^{\circ} 25' 20''$.)

BEGINNING AT **a cedar stake and 2 pits set for the N.E. corner of survey No. 20, this block.**

Thence N. at 1901 vrs. set a quart bottle, 2 dry battery cells, 2 pits and a gal. bucket.

Thence W. at 1901 vrs. set a gal. bucket, quart bottle, 2 dry battery cells, and 2 pits, the N.E. corner of survey No. 16, 4 pits bear S. $21^{\circ} 6'$ E. 684 vrs.

Thence S. at 1901 vrs. set a gal. bucket, quart bottle, 3 dry battery cells and 2 pits, windmill bears N. ~~7822' W.~~ **7892' W.**

Thence E. 1901 vrs. to the place of beginning.

Bearings record true course.

W. J. WILLIAMS, Transitman.

CLAYTON WILLIAMS, } Chain Carriers.
TOM MCGEE.

I, W. D. TWICHELL, State Surveyor, do hereby certify that the foregoing re-survey is correct and that it was made by me in the field, in accordance with law, and that the limits, boundaries and corners with the marks, natural and artificial, are truly and correctly described in the foregoing plat and field notes.

Re-surveyed **2** day of August, 1909.

APPROVED:

W. D. Twichell
State Surveyor.

Commissioner General Land Office.

Grantee: D. & S. E. R. R. Co.

FOR PLAT SEE
OTHER SIDE

THE STATE OF TEXAS

LAMB COUNTY

Survey No. **23.**

Block No. 05.

Grantee: D. & S. E. R. R. Co.

CORRECTED FIELD NOTES of a re-survey of **640** acres of land

situated in Lamb County, about **2** miles W. from Olton, same

True Mag. Var. 12° E.
being Section No. **23** Block 05, Certificate No. **34** issued to D. & S. E. R.
R. Co., made by me as State Surveyor, by virtue of Title LXXXIX, Chapter One, Revised Civil Statutes of
1895.

(All courses compared to a meridian passing through old monument at N. W. corner of Survey No. 12, Block S4 and proved by observing Polaris when at elongation. Azimuth $1^{\circ} 25' 20''$.)

BEGINNING AT a cement rock $14 \times 10 \times 8''$ and 2 pits set for the
N.E. corner of survey No. 22, this block.

Thence N. at 1901 vrs. set a cement rock $13 \times 10 \times 8''$.

Thence W. at 1284 vrs. cross road, at 1901 vrs.
set a cement rock $8 \times 6 \times 6''$.

Thence S. at 1901 vrs. set a cement rock $13 \times 8 \times 6''$
and 2 pits, the N.E. corner of survey No. 15.

Thence E. at 1087 vrs. and 1117 vrs. cross roads,
at 1901 vrs. the place of beginning.

Bearings record true course.

W. J. WILLIAMS, Transitman.

CLAYTON WILLIAMS, } Chain Carriers.
TOM MCGEE. }

I, W. D. TWICHELL, State Surveyor, do hereby certify that the foregoing re-survey is correct and that it was made by me in the field, in accordance with law, and that the limits, boundaries and corners with the marks, natural and artificial, are truly and correctly described in the foregoing plat and field notes.

Re-surveyed **2** day of August, 1909.

APPROVED:

W. D. Twichell
State Surveyor.

Commissioner General Land Office.

CC Shugrater

File No.

County.

Corrected Field Notes

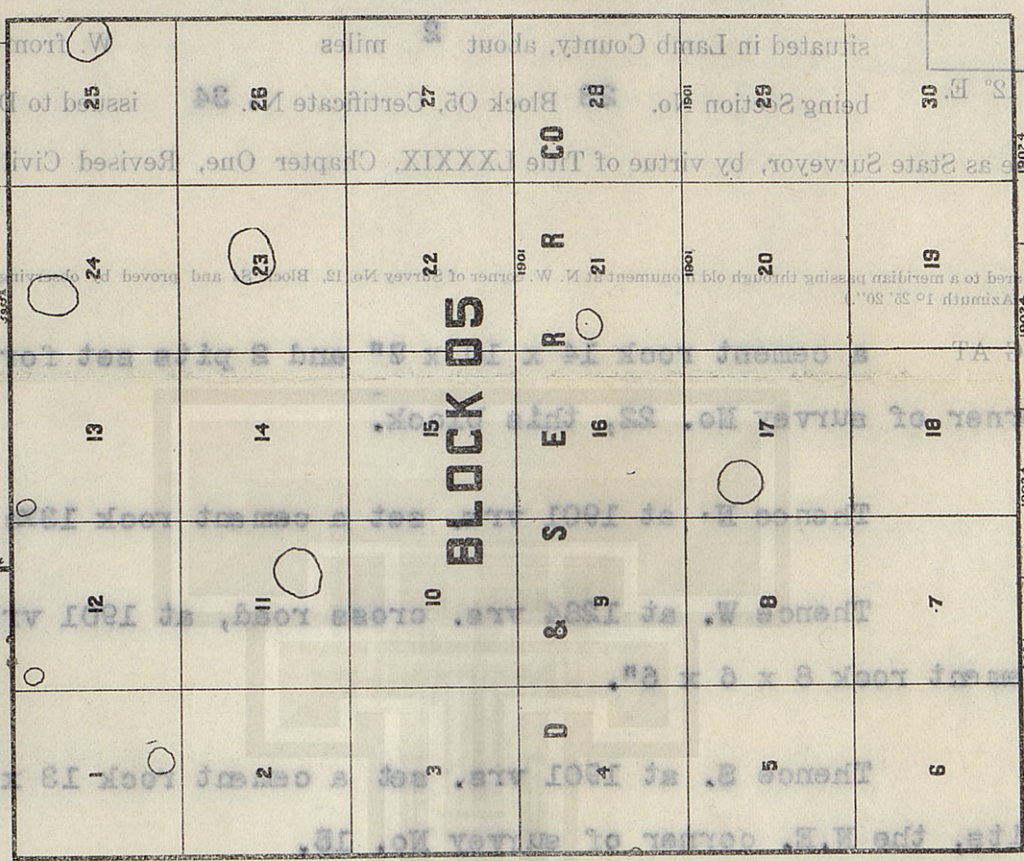
Survey No. 23

Filed

Commissioner.

File Clerk.

Commissioner General Land Office.
Re-surveyed 2 day of August, 1909.
I, W. D. TWICHELL, State Surveyor, do hereby certify that the foregoing re-survey is correct and that it was made by me in the field, in accordance with laws and that the limits, boundaries and corners with the marks, natural and artificial, are truly and correctly described in the foregoing plat and field notes.
W. J. WILLIAMS, Transitman.
Bearings record true course.
Surveyed with Buft Solar Transit No. 6741



THE STATE OF TEXAS

LAMB COUNTY

CORRECTED FIELD NOTES of a re-survey of 640 acres of land

Grantee: D. & S. E. R. R. Co.
Block No. 05.
Survey No. 23.

OTHER SIDE
FOR PLAT SEE

BLOCK

THE STATE OF TEXAS

HALE COUNTY

Survey No. 24

Block No. B .

Grantee: R. M. Thompson.

FOR PLAT SEE
OTHER SIDE

CORRECTED FIELD NOTES of a re-survey of 640 acres of land situated in Hale County, about 23 miles S. 64° W. from Plainview, same

True Mag. Var. 12° E. being Section No. 24 Block B, Certificate No. issued to R. M. Thompson made by me as State Surveyor, by virtue of Title LXXXIX, Chapter One, Revised Civil Statutes of 1895.

(All courses compared to a meridian passing through East line of section No. 31, Block B and proved by observing Polaris when at elongation. Azimuth 1° 25' 20".)

BEGINNING AT

2 pits the N.W. corner of section No. 23, this block,

from which a strap of iron under fence bears N. 89° 2' W. 3 varas;

Thence N. 0° 58' E. at 1901 varas set charred cedar post 4x48"

from which a cultivator fender under fence bears N. 89° 2' W. 17.7 varas;

Thence S. 89° 2' E. at 1901 varas set a cedar post 4x48";

Thence S. 0° 58' W. 1901 varas to a cedar post 4x36" in hard land

Thence N. 89° 2' W. 1901 varas to the place of beginning.

Surveyed with Bull Solar Transit No. 6741

Bearings record true course.

W. J. WILLIAMS, Transitman.

CLAYTON WILLIAMS, } Chain Carriers.
TOM MCGEE, }

I, W. D. TWICHELL, State Surveyor, do hereby certify that the foregoing re-survey is correct and that it was made by me in the field, in accordance with law, and that the limits, boundaries and corners with the marks, natural and artificial, are truly and correctly described in the foregoing plat and field notes.

Re-surveyed 2nd day of August, 1909.

APPROVED:

W. D. Twichell
State Surveyor.

Commissioner General Land Office.

County:

Survey No. _____

Filed _____ 190_____

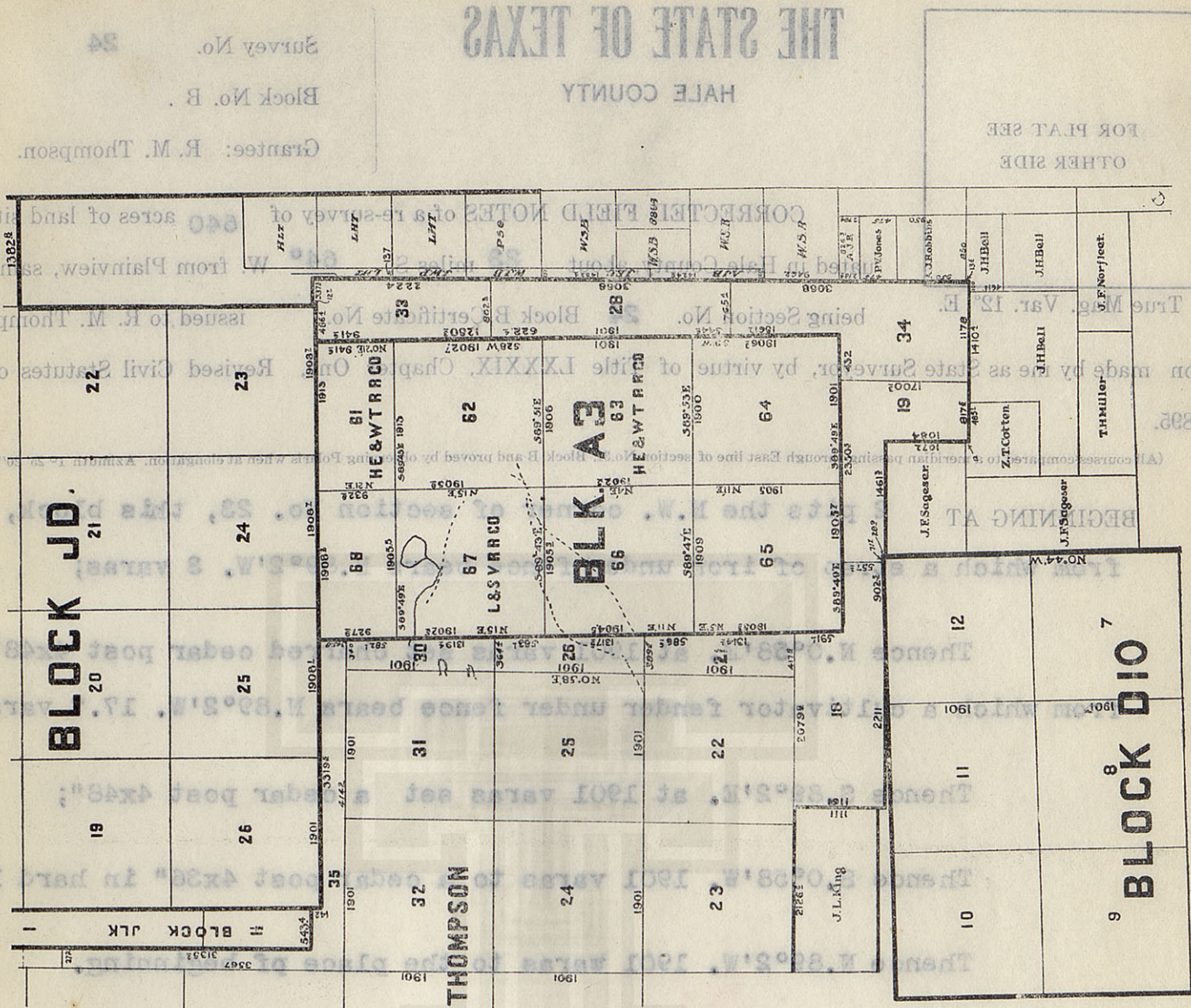
File Clerk.

W. J. WILLIAMS, Transman.
Bearings record true course.

APPROVED:

Re-surveyed ~~and~~ day of August, 1909.

marks, natural and artificial, are truly and correctly described in the foregoing plat and field notes.



FOR PLAT SEE
OTHER SIDE

THE STATE OF TEXAS

LAMB COUNTY

Survey No. 25

Block No. 05.

Grantee: D. & S. E. R. R. Co.

CORRECTED FIELD NOTES of a re-survey of 640 acres of land

situated in Lamb County, about 1 miles N. 45° W. from Olton, same

being Section No. 25 Block 05, Certificate No. 35 issued to D. & S. E. R.

R. Co., made by me as State Surveyor, by virtue of Title LXXXIX, Chapter One, Revised Civil Statutes of 1895.

(All courses compared to a meridian passing through old monument at N. W. corner of Survey No. 12, Block S4 and proved by observing Polaris when at elongation. Azimuth 1° 25' 20".)

BEGINNING AT

a cement rock 8 x 6 x 4" set for the N.E. corner of survey No. 24, this block.

Thence E. at 448 vrs., 722 vrs. and 1380 vrs. cross roads, at 1641 vrs. set iron pipe and 3 pits, the S.E. corner of Survey No. 3, Block G & M, at 1901 vrs. set cement rock 13 x 10 x 7", the N.W. corner of Survey No. 36, Block O-2.

Thence S. at 356 vrs. cross road, at 1901 vrs. set a cement rock 14 x 12 x 12", the S.W. corner of said Survey No. 36.

Thence W. at 315 vrs., 442 vrs and 1846 vrs. cross roads, at 1901 vrs. a cement rock 13 x 10 x 8", the S.E. corner of survey No. 24.

Thence N. 1901 vrs. to the place of beginning.

Bearings record true course.

W. J. WILLIAMS, Transitman.

CLAYTON WILLIAMS, } Chain Carriers.
TOM MCGEE.

I, W. D. TWICHELL, State Surveyor, do hereby certify that the foregoing re-survey is correct and that it was made by me in the field, in accordance with law, and that the limits, boundaries and corners with the marks, natural and artificial, are truly and correctly described in the foregoing plat and field notes.

Re-surveyed 2 day of August, 1909.

APPROVED:

W. D. Twichell
State Surveyor.

Commissioner General Land Office.

THE STATE OF TEXAS

HALE COUNTY

Survey No. 25

Block No. B.

Grantee: R. M. Thompson.

FOR PLAT SEE
OTHER SIDE

CORRECTED FIELD NOTES of a re-survey of 640 acres of land situated in Hale County, about 22 miles S. 63° W. from Plainview, same

being Section No. 25 Block B, Certificate No. issued to R. M. Thompson made by me as State Surveyor, by virtue of Title LXXXIX, Chapter One, Revised Civil Statutes of 1895.

(All courses compared to a meridian passing through East line of section No. 31, Block B and proved by observing Polaris when at elongation. Azimuth $1^{\circ} 25' 20''$.)

BEGINNING AT a cedar post 4"x48" set for the N.E. corner of section No. 24, this block;

Thence S. $89^{\circ} 2' E$. 1901 varas, set a hackberry post 3"x24" and 2 pits in the South part of small valley;

Thence S. $0^{\circ} 58' W$. at 1901 varas set a wagon spindle and 2 pits

Thence N. $89^{\circ} 2' W$. at 1901 varas set a cedar post 4"x36" in hard ground;

Thence N. $0^{\circ} 58' E$. 1901 varas to the place of beginning.

Bearings record true course.

W. J. WILLIAMS, Transitman.

CLAYTON WILLIAMS, } Chain Carriers.
TOM MCGEE, }

I, W. D. TWICHELL, State Surveyor, do hereby certify that the foregoing re-survey is correct and that it was made by me in the field, in accordance with law, and that the limits, boundaries and corners with the marks, natural and artificial, are truly and correctly described in the foregoing plat and field notes.

Re-surveyed 2nd day of August, 1909.

APPROVED:

W. D. Twichell
State Surveyor.

Commissioner General Land Office.

File No.

County.

Corrected Field Notes

Survey No.

Filed

190

Commissioner.

File Clerk.

Commissioner General Land Office.

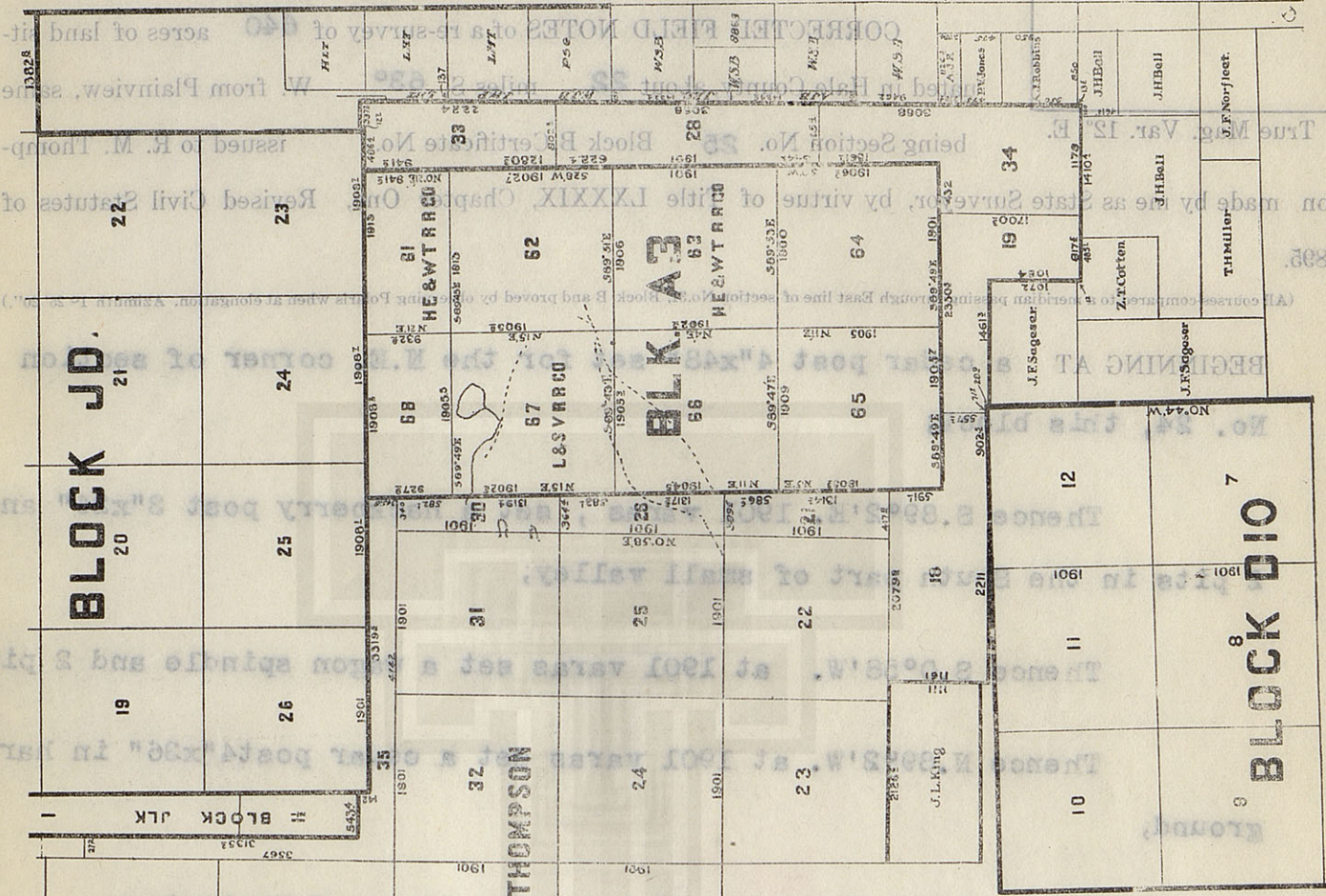
APPROVED:

Re-surveyed 2nd day of August, 1909.

W. J. WILLIAMS, Transcriber.

Beings record true course.

Surveyed with Buff Solar Transit No. 6741



Grantee: R. M. Thompson.

Block No. B.

Survey No. 25

THE STATE OF TEXAS

HALE COUNTY

OTHER SIDE
FOR PLAT SEE

THE STATE OF TEXAS

HALE COUNTY

Survey No. 26

Block No. B.

Grantee: R. M. Thompson.

FOR PLAT SEE
OTHER SIDE

CORRECTED FIELD NOTES of a re-survey of 126.7 acres of land situated in Hale County, about 22 miles S. 63° W. from Plainview, same

True Mag. Var. 12° E. being Section No. 26 Block B, Certificate No. issued to R. M. Thompson made by me as State Surveyor, by virtue of Title LXXXIX, Chapter One, Revised Civil Statutes of 1895.

(All courses compared to a meridian passing through East line of section No. 31, Block B and proved by observing Polaris when at elongation. Azimuth 1° 25' 20".)

BEGINNING AT a hack berry post 3"x24" and 2 pits set for the N.E. Cor. of section No. 25, this block;

Thence S. 89° 2' E. 364.4 varas to the west line of section No. 67, Block A.3;

Thence S. 0° 15' W. 583.1 varas to old mound several white stones and steel atay, set by State Surveyor, J.H. Parks, for the S.W. corner of section No. 67, from which old well bears N. 67° 30' E. 162 varas;

Thence S. 0° 11' W. 1317.9 varas to hack berry stake and casting set in the west line of section No. 65, Block A.3;

Thence N. 89° 2' W. at 389.5 varas set wagon spindle and 2 pits;
Thence N. 0° 58' E. at 140 varas cross road, at 1901 varas to the place of beginning.

Bearings record true course.

W. J. WILLIAMS, Transitman.

CLAYTON WILLIAMS, } Chain Carriers.
TOM MCGEE. }

I, W. D. TWICHELL, State Surveyor, do hereby certify that the foregoing re-survey is correct and that it was made by me in the field, in accordance with law, and that the limits, boundaries and corners with the marks, natural and artificial, are truly and correctly described in the foregoing plat and field notes.

Re-surveyed 2nd day of August, 1909.

APPROVED:

W. D. Twichell
State Surveyor.

Commissioner General Land Office.

File No.

Corrected Field Notes

Survey No.

Filed

Commissioner.

File Clerk.

Commissioner General Land Office.

APPROVED:

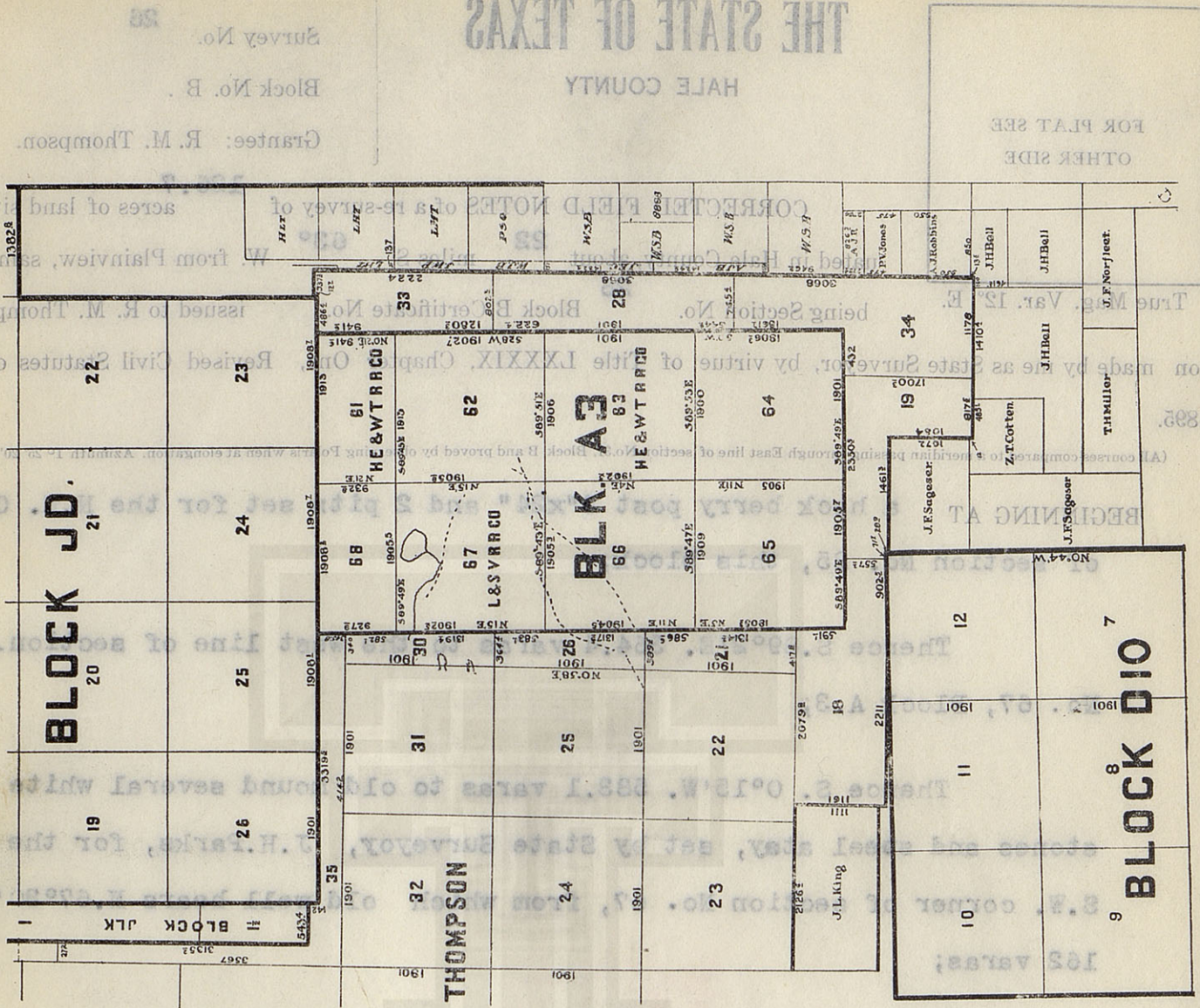
Re-surveyed day of August, 1909.

W. J. WILLIAMS, Transcriber.

Bearings record true course.

Surveyed with Buff Solar Transit No. 6741

Thence N. 89° 32' W. at 389.5 varies set upon spindle and 2 pins;
Thence N. 0° 58' E. at 140 varies cross road, at 1901 varies
ing set in the west line of section No. 63, Block A.3;
Thence S. 0° 11' W. 1317.9 varies to back berry stake and east-



Grantee: R. M. Thompson.

Block No. B.

Survey No.

THE STATE OF TEXAS

HALE COUNTY

FOR PLAT SEE
OTHER SIDE

FOR PLAT SEE
OTHER SIDE

THE STATE OF TEXAS

LAMB COUNTY

Survey No. 27.

Block No. O5.

Grantee: D. & S. E. R. R. Co.

CORRECTED FIELD NOTES of a re-survey of 640 acres of land

situated in Lamb County, about 1 miles S. 45° W. from Olton, same
being Section No. 27 Block O5, Certificate No. 36 issued to D. & S. E. R.

R. Co., made by me as State Surveyor, by virtue of Title LXXXIX, Chapter One, Revised Civil Statutes of
1895.

(All courses compared to a meridian passing through old monument at N. W. corner of Survey No. 12, Block S4 and proved by observing Polaris when at
elongation. Azimuth 1° 25' 20".)

BEGINNING AT a 1/2" iron pipe, 2 pits and a cement rock 14 x 10 x 6"
set for the S.E. corner of survey No. 26, this block.

Thence S. at 950.5 vrs. set a cement rock 12 x 8 x 4"
and 2 pits, at 1328 vrs. cross road, at 1901 vrs. set a post and
2 pits, the S.W. corner of survey No. 34, Block O-2.

Thence W. at 1901 vrs. set a gal. bucket, quart
bottle, 2 dry battery cells, and 2 pits, the S.E. corner of survey
No. 22.

Thence N. at 1901 vrs. set a cement rock 14 x 10 x 7"
and 2 pits.

Thence E. at 1891 vrs. cross road, at 1901 vrs.
the place of beginning.

Bearings record true course.

W. J. WILLIAMS, Transitman.

CLAYTON WILLIAMS, } Chain Carriers.
TOM MCGEE. }

I, W. D. TWICHELL, State Surveyor, do hereby certify that the foregoing re-survey is correct and that
it was made by me in the field, in accordance with law, and that the limits, boundaries and corners with the
marks, natural and artificial, are truly and correctly described in the foregoing plat and field notes.

Re-surveyed 2 day of August, 1909.

APPROVED:

W. D. Twichell
State Surveyor.

Commissioner General Land Office.

THE STATE OF TEXAS

HALE COUNTY

Survey No. 28

Block No. B.

Grantee: R. M. Thompson.

FOR PLAT SEE
OTHER SIDE

CORRECTED FIELD NOTES of a re-survey of 426 acres of land situated in Hale County, about 20 miles S. 56° W. from Plainview, same

True Mag. Var. 12° E. being Section No. 28 Block B, Certificate No. issued to R. M. Thompson made by me as State Surveyor, by virtue of Title LXXXIX, Chapter One, Revised Civil Statutes of 1895.

(All courses compared to a meridian passing through East line of section No. 31, Block B and proved by observing Polaris when at elongation. Azimuth 1° 25' 20".)

BEGINNING AT stake set for the N.E. corner of section No. 34, this block;

Thence N. 0° 58' E. at 1019.5 varas point for N.W. corner of A.J. Baker S.F. from which 2" iron pipe bears S. 39° 54' W. 58 varas and 1" iron rod in 4 old pits bear same 492.7 varas, at 2452.2 varas cross fence at broken post in lake, at 3068 varas point in orchard;

Thence N. 39° 2' W. at 802.2 varas point under fence in the east line of section No. 62, Block A.3;

Thence S. 0° 28' W. at 622.4 varas set 1-1/2" pipe by stones the remains of corner made by State surveyor J.H. Parks for the S.E. cor. of Section No. 62;

Thence S. 0° 15' W. at 1901 varas set cultivator shoe and 4 pits in lake for the S.E. corner of section No. 63, Block A.3;

Thence S. 0° 9' W. at 544.6 varas point in the East line of section No. 64, Block A.3, from which strap iron and 3 pits br N. 39° 2' W. 3.2 varas;

Bearings record true course.

W. J. WILLIAMS, Transitman.

CLAYTON WILLIAMS, } Chain Carriers.
TOM MCGEE, }

I, W. D. TWICHELL, State Surveyor, do hereby certify that the foregoing re-survey is correct and that it was made by me in the field, in accordance with law, and that the limits, boundaries and corners with the marks, natural and artificial, are truly and correctly described in the foregoing plat and field notes.

Re-surveyed 2nd, day of August, 1909.

APPROVED:

W. D. Twichell
State Surveyor.

Commissioner General Land Office.

File No.

County.

Corrected Field Notes

Survey No.

Filed

190

Commissioner.

File Clerk.

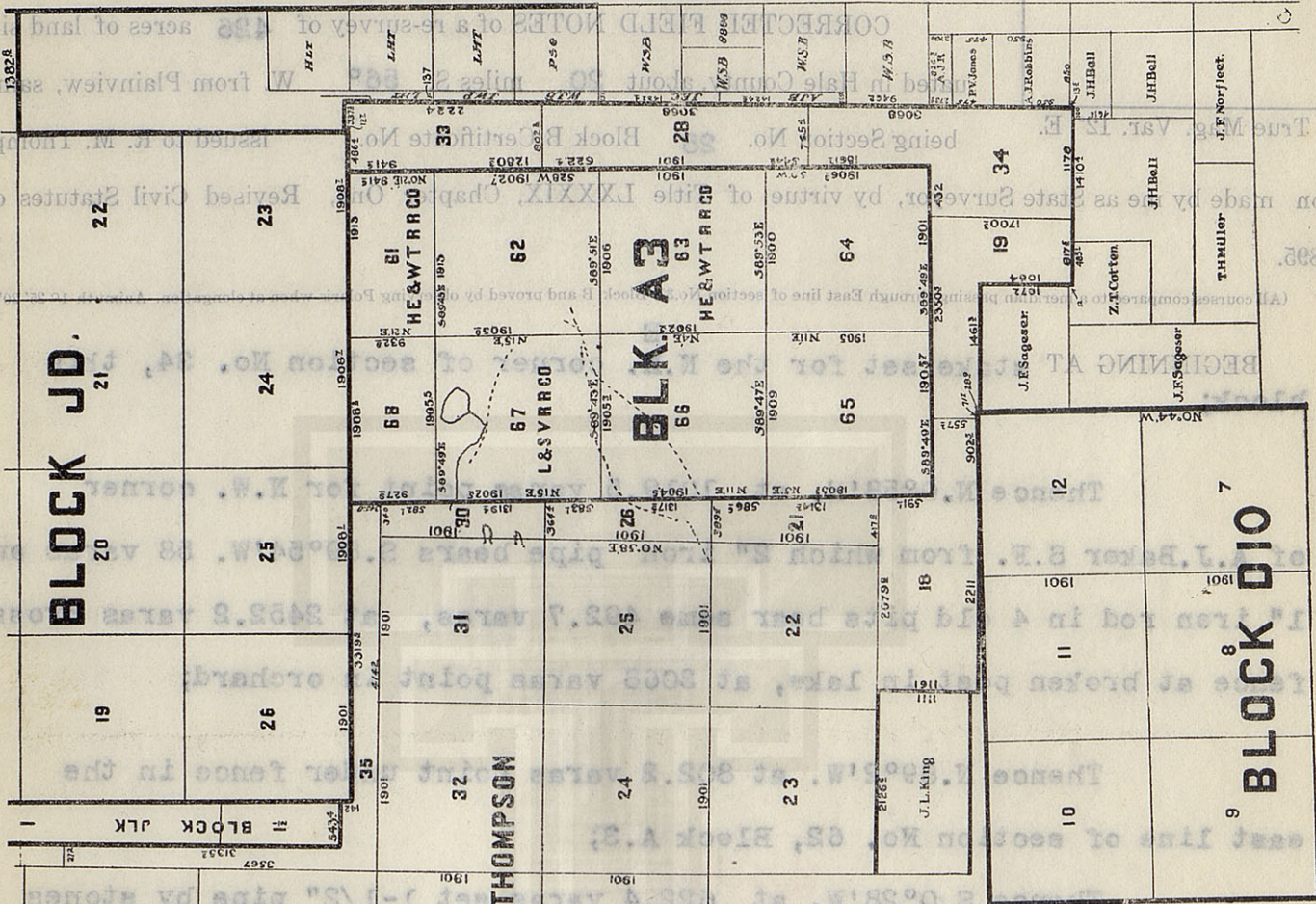
Commissioner General Land Office.

Re-surveyed 2nd day of August, 1909.

APPROVED:

W. J. WILLIAMS, Transcriber.

Surveyed with Buft Solar Transit No. 6741



Grantee: R. M. Thompson.

Block No. B.

Survey No. 28

THE STATE OF TEXAS

HALE COUNTY

OTHER SIDE
FOR PLAT SEE

FOR PLAT SEE
OTHER SIDE

THE STATE OF TEXAS

LAMB COUNTY

Survey No. 29

Block No. 05.

Grantee: D. & S. E. R. R. Co.

CORRECTED FIELD NOTES of a re-survey of 640 acres of land

situated in Lamb County, about 3 miles S. 20° W. from Olton, same

being Section No. 29 Block 05, Certificate No. 37 issued to D. & S. E. R.

R. Co., made by me as State Surveyor, by virtue of Title LXXXIX, Chapter One, Revised Civil Statutes of 1895.

(All courses compared to a meridian passing through old monument at N. W. corner of Survey No. 12, Block S4 and proved by observing Polaris when at elongation. Azimuth 1° 25' 20".)

BEGINNING AT 2 pits, brick, quart bottle, oil can and steel rod set for the S.E. corner of survey No. 28, this block.

Thence S. at 1901 vrs. set 3 quart bottles, 8 square oil cans, cast windmill coupling and 2 pits, ~~windmill~~ fence bears S. 3 vrs.

Thence W. at 403 vrs. cross fence at 1901 vrs. set bottle oil can, quart, and 2 pits, the S E. corner of survey No. 20.

Thence N. at 1901 vrs. set cedar stake and 2 pits, a windmill bears N. 22° 4' W., another windmill bears N. 76° 2' E., another windmill bears S. 12° E., another windmill bears S. 51° 24' W.

Thence E. 1901 vrs. to the place of beginning.

Bearings record true course.

W. J. WILLIAMS, Transitman.

CLAYTON WILLIAMS, } Chain Carriers.
TOM MCGEE. }

I, W. D. TWICHELL, State Surveyor, do hereby certify that the foregoing re-survey is correct and that it was made by me in the field, in accordance with law, and that the limits, boundaries and corners with the marks, natural and artificial, are truly and correctly described in the foregoing plat and field notes.

Re-surveyed 2 day of August, 1909.

APPROVED:

W. D. Twichell
State Surveyor.

Commissioner General Land Office.

THE STATE OF TEXAS

LAMB COUNTY

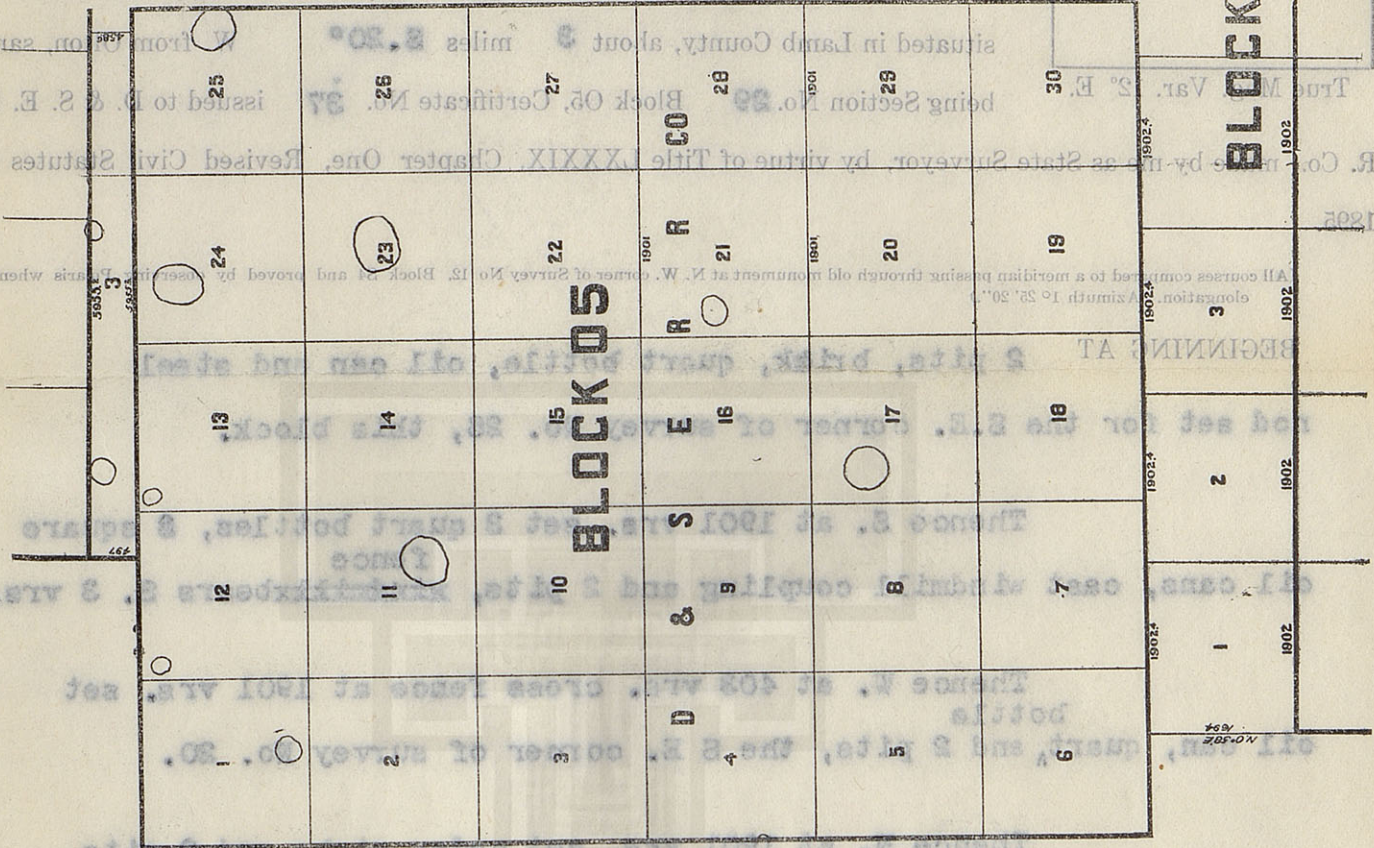
Grantee: D. & S. E. R. R. Co.

Block No. 05

Survey No. 22

OTHER SIDE
FOR PLAT SEE

CORRECTED FIELD NOTES of a re-survey of 640 acres of land



Surveyed with Buff Solar Transit No. 6741

W. J. WILLIAMS, Transcriber.
Bearings record true course.

I, W. D. TWICHELL, State Surveyor, do hereby certify that the foregoing re-survey is correct and that it was made by me in the field, in accordance with law, and that the limits, boundaries and corners with the marks, natural and artificial, are truly and correctly described in the foregoing plat and field notes.
Re-surveyed 3 day of August, 1909.

APPROVED:

Commissioner General Land Office.

C. C. Slaghter

File No.

County.

Corrected Field Notes

Survey No. 22

Filed

190

Commissioner.

File Clerk.

THE STATE OF TEXAS

HALE COUNTY

Survey No. 30

Block No. B.

Grantee: R. M. Thompson.

FOR PLAT SEE
OTHER SIDE

CORRECTED FIELD NOTES of a re-survey of 118.8 acres of land situated in Hale County, about 21 miles S. 65° W. from Plainview, same

True Mag. Var. 12° E.

being Section No. 30 Block B, Certificate No. issued to R. M. Thompson

made by me as State Surveyor, by virtue of Title LXXXIX, Chapter One, Revised Civil Statutes of 1895.

(All courses compared to a meridian passing through East line of section No. 31, Block B and proved by observing Polaris when at elongation. Azimuth 1° 25' 20".)

BEGINNING AT a strap of iron driven in the ground in the west line of section No. 68, Block A.3, and being 9845 varas S. 89° 2' E. and 5703 varas N. 0° 58' E. from three old pits the original S.E. corner of Section No. 29, Block T;

Thence N. 89° 2' W. at 340 varas set cement rock and 3 pits for the N.W. corner of this section;

Thence S. 0° 58' W. at 1200 varas and 1540 varas cross tops of sand hills, at 1901 varas set Heck berry post 3"x24" and 2 pits;

Thence S. 89° 2' E. 364.4 varas to the West line of section

No. 67, Block A.3.

Thence N. 0° 15' E. 1319.4 varas to stone in old pit, the N.W. corner of said No. 67, set an iron pipe;

Thence N. 0° 11' E at 101 varas pass old pit on hill, at 582.1 varas the place of beginning.

Bearings record true course.

W. J. WILLIAMS, Transitman.

CLAYTON WILLIAMS, } Chain Carriers.
TOM MCGEE.

I, W. D. TWICHELL, State Surveyor, do hereby certify that the foregoing re-survey is correct and that it was made by me in the field, in accordance with law, and that the limits, boundaries and corners with the marks, natural and artificial, are truly and correctly described in the foregoing plat and field notes.

Re-surveyed 2nd day of August, 1909.

APPROVED:

W. D. Twichell
State Surveyor.

Commissioner General Land Office.

File No.

County.

Corrected Field Notes

Survey No.

Filed

190

Commissioner.

File Clerk.

Commissioner General Land Office.

APPROVED:

Re-surveyed

day of August, 1909.

W. J. WILLIAMS, Transmitter.

Bearings record true course.

Surveyed with Buft Solar Transit No. 6741

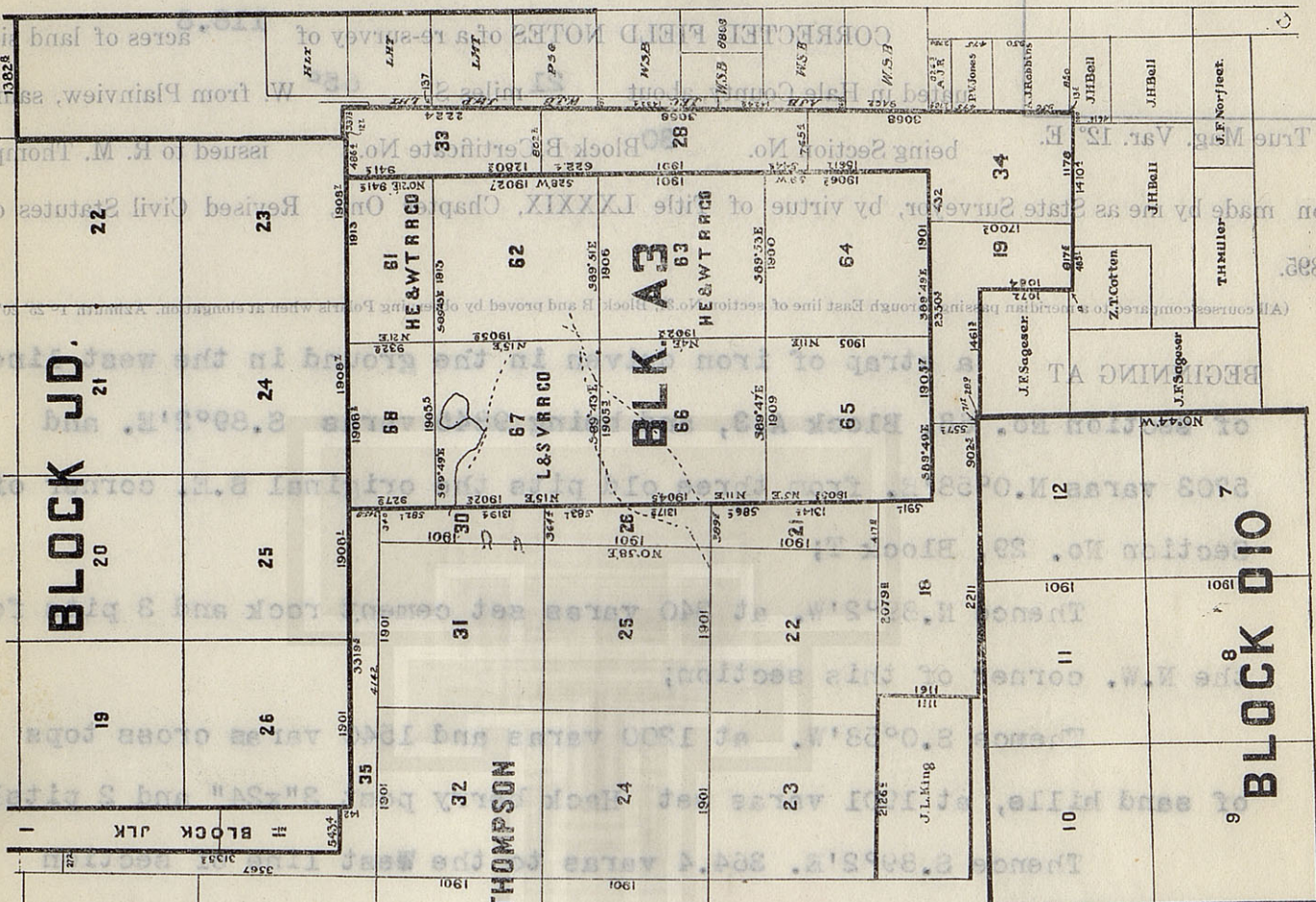
varies the place of beginning.

Thence N. 0° 11' E. at 101 varies pass old pit on hill, at 882.1

corner of said No. 67, set on iron pipe;

Thence N. 0° 15' E. 1319.4 varies to stone in old pit, the N.W.

No. 67, block A.3.



OTHER SIDE
FOR PLAT SEE

Grantee: R. M. Thompson.

Block No. B.

Survey No.

THE STATE OF TEXAS

HALE COUNTY

THE STATE OF TEXAS

HALE COUNTY

Survey No. 31

Block No. B.

Grantee: R. M. Thompson.

FOR PLAT SEE
OTHER SIDE

CORRECTED FIELD NOTES of a re-survey of 640 acres of land situated in Hale County, about 22 miles S. 66° W. from Plainview, same

being Section No. 31 Block B, Certificate No. issued to R. M. Thompson made by me as State Surveyor, by virtue of Title LXXXIX, Chapter One, Revised Civil Statutes of 1895.

(All courses compared to a meridian passing through East line of section No. 31, Block B and proved by observing Polaris when at elongation. Azimuth $1^{\circ} 25' 20''$.)

BEGINNING AT a cement rock, 8x6x6" and 3 pits set for the N.W. corner of section No. 30, this Block;

Thence N. 89° 2' W. at 1901 varas set a cedar post, 3"x24";

Thence S. 0° 58' W. at 1901 varas set a cedar post 4"x48";

Thence S. 89° 2' E. at 1901 varas set a hackberry post and 2 pits in the south part of small valley;

Thence N. 0° 58' E. 1901 varas to the place of beginning.

Bearings record true course.

W. J. WILLIAMS, Transitman.

CLAYTON WILLIAMS, } Chain Carriers.
TOM MCGEE. }

I, W. D. TWICHELL, State Surveyor, do hereby certify that the foregoing re-survey is correct and that it was made by me in the field, in accordance with law, and that the limits, boundaries and corners with the marks, natural and artificial, are truly and correctly described in the foregoing plat and field notes.

Re-surveyed day of August, 1909.

APPROVED:

W. D. Twichell
State Surveyor.

Commissioner General Land Office.

County. _____

 Corrected Field Notes

 Survey No. _____

 Filed _____

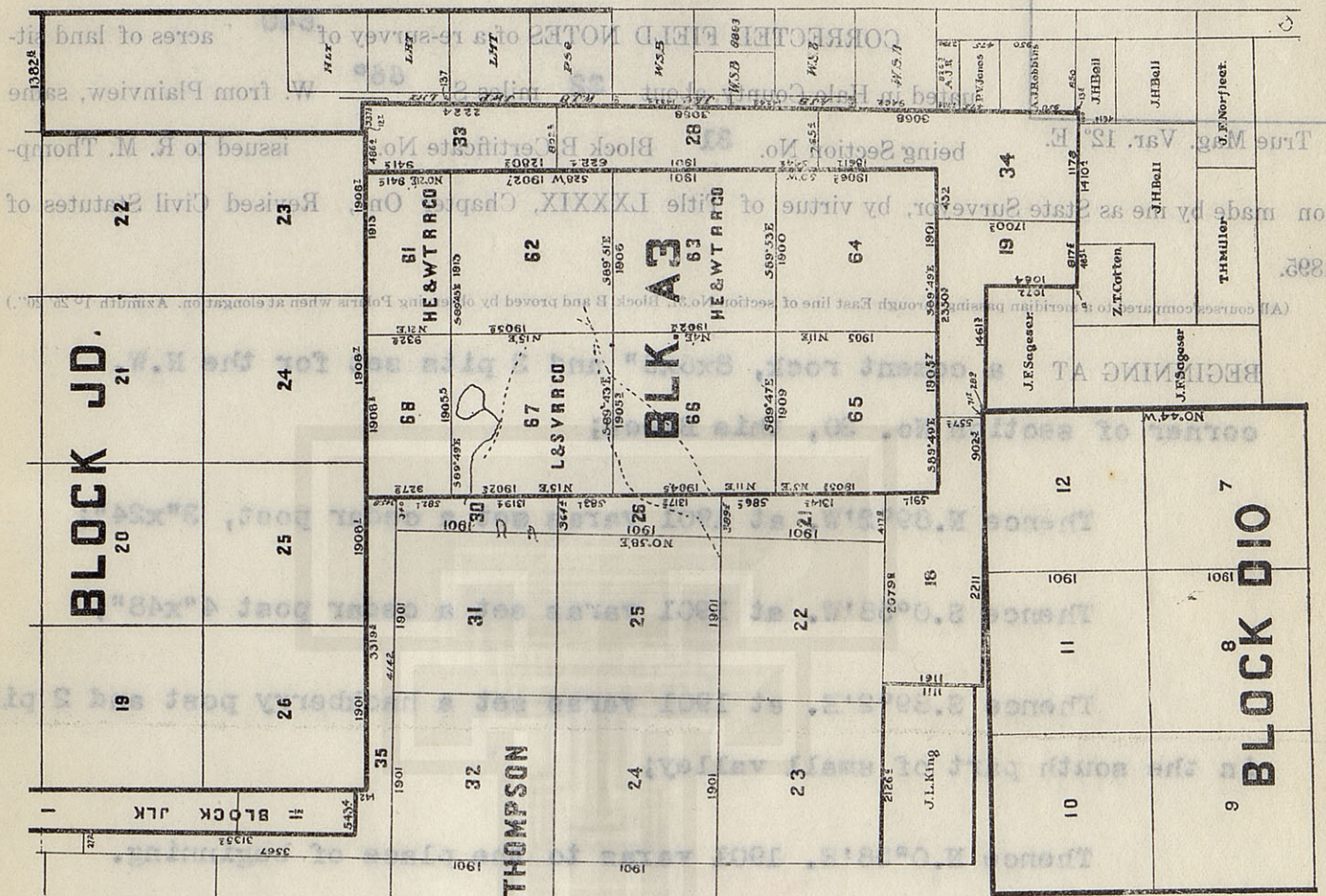
 Commissioner.

 File Clerk.

APPROVED:

Re-surveyed day of August, 1909.
marks, natural and artificial, are truly and corre-
it was made by me in the field, in accordance with
I. W. D. TWIGGILL, State Surveyor, do hereby

Bearings record true course.



THE STATE OF TEXAS

HALE COUNTY

Survey No. 32

Block No. B.

Grantee: R. M. Thompson.

FOR PLAT SEE
OTHER SIDE

CORRECTED FIELD NOTES of a re-survey of 640 acres of land situated in Hale County, about 23 miles S. 66° W. from Plainview, same

True Mag. Var. 12° E. being Section No. 32 Block B, Certificate No. issued to R. M. Thompson made by me as State Surveyor, by virtue of Title LXXXIX, Chapter One, Revised Civil Statutes of 1895.

(All courses compared to a meridian passing through East line of section No. 31, Block B and proved by observing Polaris when at elongation. Azimuth 1° 25' 20".)

BEGINNING AT a cedar post 3"x24" set for the N.W. corner of section No. 31, This block;

Thence N. 39° 2' W. 1901 varas set a cedar post 4"x30" from which a small plowshare under fence bears N. 89° 2' W. 33.1 varas;

Thence S. 0° 58' W. at 1901 varas set a charred cedar post 4x48" from which a cultivator fender under fence bears N. 89° 2' W. 17.7 varas;

Thence S. 89° 2' E. at 1901 varas set a cedar post 4x48";

Thence N. 0° 58' E. 1901 varas to the place of beginning.

Bearings record true course.

W. J. WILLIAMS, Transitman.

CLAYTON WILLIAMS, } Chain Carriers.
TOM MCGEE.

I, W. D. TWICHELL, State Surveyor, do hereby certify that the foregoing re-survey is correct and that it was made by me in the field, in accordance with law, and that the limits, boundaries and corners with the marks, natural and artificial, are truly and correctly described in the foregoing plat and field notes.

Re-surveyed 2nd day of August, 1909.

APPROVED:

W. D. Twichell
State Surveyor.

Commissioner General Land Office.

File No. _____

County.

Corrected Field Notes

Survey No. _____

Filed _____ 190_____

Commissioner.

File Clerk.

Commissioner General Land Office.

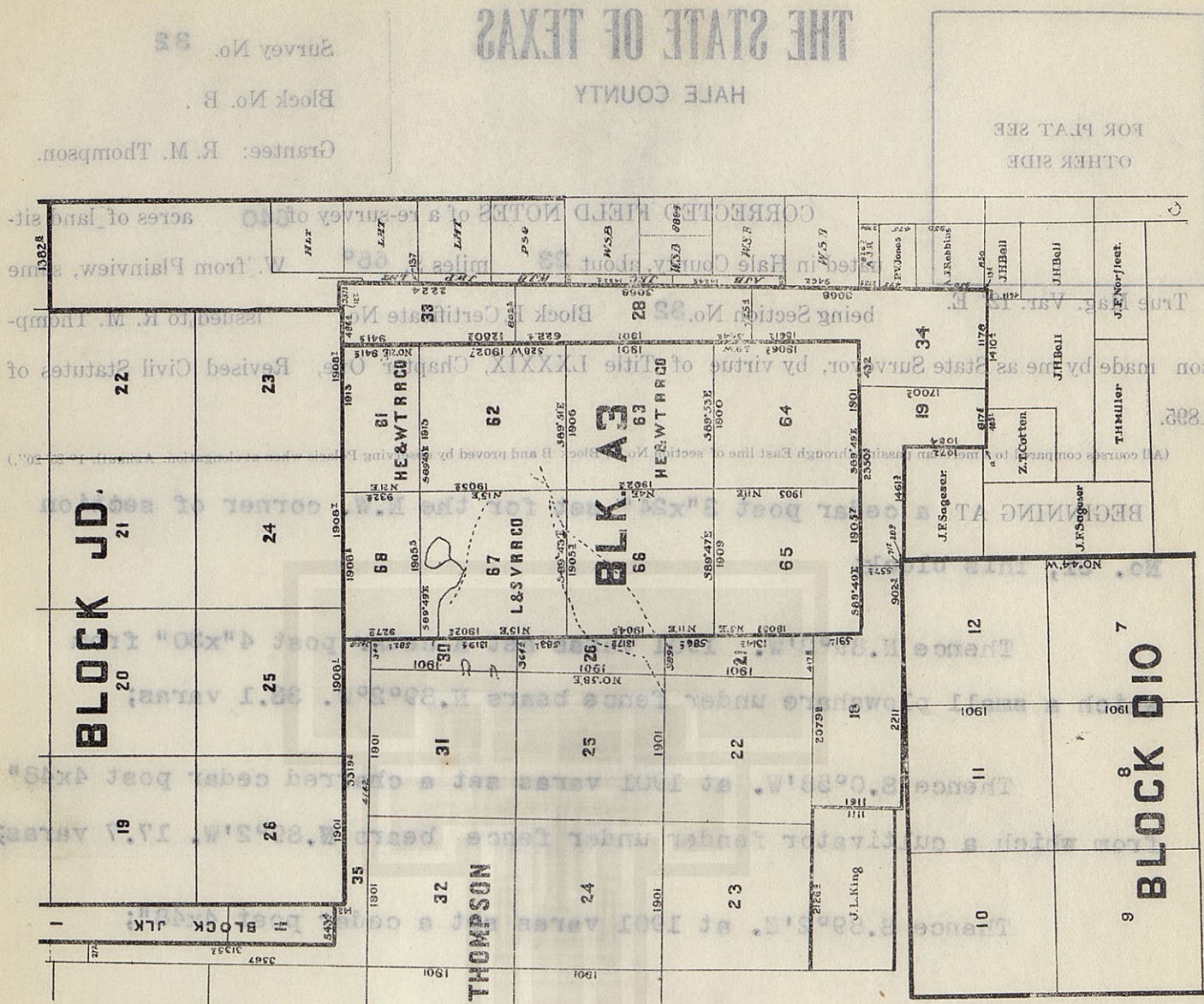
APPROVED:

Re-surveyed 2nd day of August, 1909.
marks, natural and artificial, are truly and cor-
it was made by me in the field, in accordance with
I. W. D. TWICHELL, State Surveyor, do hereby

W. J. WILLIAMS, Transmitter.

Bearings record true course.

Surveyed with Buff Solar Transit No. 6741



THE STATE OF TEXAS

HALE COUNTY

Survey No. 33

Block No. B.

Grantee: R. M. Thompson.

FOR PLAT SEE
OTHER SIDE

CORRECTED FIELD NOTES of a re-survey of 321.7 acres of land situated in Hale County, about 19 miles S. 60° W. from Plainview, same

being Section No. 33 Block B, Certificate No. issued to R. M. Thompson made by me as State Surveyor, by virtue of Title LXXXIX, Chapter One, Revised Civil Statutes of 1895.

(All courses compared to a meridian passing through East line of section No. 31, Block B and proved by observing Polaris when at elongation. Azimuth $1^{\circ} 25' 20''$.)

BEGINNING AT the N.E. corner of section No. 28, this block;

Thence N. $0^{\circ} 58' E$. at 1485.3 varas set single tree clip and 3 pits for the S.W. corner of L.H. Triplett S.E., from which casting marked L328 bears N. $89^{\circ} 2' W$. 63 varas, under fence, at 2170/3 varas set single tree clip and 3 pits from which 4" pinion and cedar post bear N. $89^{\circ} 38' E$. 54 varas and 4 pits bear S. $89^{\circ} 38' W$. 88 varas, at 2244 varas made 4 pits for the N.E. corner of this section;

Thence N. $89^{\circ} 2' W$. at 337.2 varas set 3" cogwheel in the east line of section No. 23, Block J.D;

Thence South at 12.7 varas set peg and 4 pits for the S.E. corner of said section No. 23;

Thence West at 486.4 varas point in the east line of section No. 61, Block A.3;

Thence S. $0^{\circ} 21' W$. at 800.4 varas pass old pit in east line of said section No. 61, at 941.6 varas post and 4 pits, Parks S.E. corner of section No. 61;

Thence S. $0^{\circ} 28' W$. 1230.3 varas to point in east line of section No. 62, Block A.3; Thence S. $89^{\circ} 2' E$. 802.2 varas to the place of beginning.

Bearings record true course.

W. J. WILLIAMS, Transitman.

CLAYTON WILLIAMS, } Chain Carriers.
TOM MCGEE. }

I, W. D. TWICHELL, State Surveyor, do hereby certify that the foregoing re-survey is correct and that it was made by me in the field, in accordance with law, and that the limits, boundaries and corners with the marks, natural and artificial, are truly and correctly described in the foregoing plat and field notes.

Re-surveyed 2nd day of August, 1909.

APPROVED:

W. D. Twichell
State Surveyor.

Commissioner General Land Office.

County.	Commissioner.	File Clerk.
Corrected Field Notes		
Survey No.		
Filed	190	

Corrected Field Notes

Filed _____ 190__

File Clerk,

APPROVED: _____
Resurveyed and
day of August, 1909.

Bearings record true course.

of section No. 61;
said section No. 61, at 941.6 varies post and 4 pits, Tarks S.E. corner
Thence S. 0° 21' W. at 800.4 varies post and 4 pits in east line of

Surveyed with Buff Solar Transit No. 6741

Thence S. 60° 21' W. at 800.4 varms pass old pit in east line of

С. А. М.

		1061	1061	1061	1061
--	--	------	------	------	------

227 2152

[illegible]

35	IN	8u
----	----	----

[illegible]

3	41422	1911
---	-------	------

190	3	22	19	22
-----	---	----	----	----

779E	18	2211	1061
------	----	------	------

20 25 1908

[illegible][illegible]

5572	65	5892	1905	66	5892	1905	67	VR	1905	68	1905	69	1905	70	1905	71	1905	72	1905	73	1905	74	1905	75	1905	76	1905	77	1905	78	1905	79	1905	80	1905	81	1905	82	1905	83	1905	84	1905	85	1905	86	1905	87	1905	88	1905	89	1905	90	1905	91	1905	92	1905	93	1905	94	1905	95	1905	96	1905	97	1905	98	1905	99	1905	100	1905
------	----	------	------	----	------	------	----	----	------	----	------	----	------	----	------	----	------	----	------	----	------	----	------	----	------	----	------	----	------	----	------	----	------	----	------	----	------	----	------	----	------	----	------	----	------	----	------	----	------	----	------	----	------	----	------	----	------	----	------	----	------	----	------	----	------	----	------	----	------	----	------	----	------	-----	------

10 12 24 00 90 20

1905	Nile	N48	19023	N156	19052	N212	9322
------	------	-----	-------	------	-------	------	------

1072 1084

	81	62	63	64	19	1976
	T F		T F			

43

1901	1902	1903	1904	1905	1906	1907	1908	1909	1910	1911	1912	1913	1914	1915	1916	1917	1918	1919	1920	1921	1922	1923	1924	1925	1926	1927	1928	1929	1930	1931	1932	1933	1934	1935	1936	1937	1938	1939	1940	1941	1942	1943	1944	1945	1946	1947	1948	1949	1950	1951	1952	1953	1954	1955	1956	1957	1958	1959	1960	1961	1962	1963	1964	1965	1966	1967	1968	1969	1970	1971	1972	1973	1974	1975	1976	1977	1978	1979	1980	1981	1982	1983	1984	1985	1986	1987	1988	1989	1990	1991	1992	1993	1994	1995	1996	1997	1998	1999	2000	2001	2002	2003	2004	2005	2006	2007	2008	2009	2010	2011	2012	2013	2014	2015	2016	2017	2018	2019	2020	2021	2022	2023	2024	2025	2026	2027	2028	2029	2030	2031	2032	2033	2034	2035	2036	2037	2038	2039	2040	2041	2042	2043	2044	2045	2046	2047	2048	2049	2050	2051	2052	2053	2054	2055	2056	2057	2058	2059	2060	2061	2062	2063	2064	2065	2066	2067	2068	2069	2070	2071	2072	2073	2074	2075	2076	2077	2078	2079	2080	2081	2082	2083	2084	2085	2086	2087	2088	2089	2090	2091	2092	2093	2094	2095	2096	2097	2098	2099	2100	2101	2102	2103	2104	2105	2106	2107	2108	2109	2110	2111	2112	2113	2114	2115	2116	2117	2118	2119	2120	2121	2122	2123	2124	2125	2126	2127	2128	2129	2130	2131	2132	2133	2134	2135	2136	2137	2138	2139	2140	2141	2142	2143	2144	2145	2146	2147	2148	2149	2150	2151	2152	2153	2154	2155	2156	2157	2158	2159	2160	2161	2162	2163	2164	2165	2166	2167	2168	2169	2170	2171	2172	2173	2174	2175	2176	2177	2178	2179	2180	2181	2182	2183	2184	2185	2186	2187	2188	2189	2190	2191	2192	2193	2194	2195	2196	2197	2198	2199	2200	2201	2202	2203	2204	2205	2206	2207	2208	2209	2210	2211	2212	2213	2214	2215	2216	2217	2218	2219	2220	2221	2222	2223	2224	2225	2226	2227	2228	2229	2230	2231	2232	2233	2234	2235	2236	2237	2238	2239	2240	2241	2242	2243	2244	2245	2246	2247	2248	2249	2250	2251	2252	2253	2254	2255	2256	2257	2258	2259	2260	2261	2262	2263	2264	2265	2266	2267	2268	2269	2270	2271	2272	2273	2274	2275	2276	2277	2278	2279	2280	2281	2282	2283	2284	2285	2286	2287	2288	2289	2290	2291	2292	2293	2294	2295	2296	2297	2298	2299	2300	2301	2302	2303	2304	2305	2306	2307	2308	2309</
------	------	------	------	------	------	------	------	------	------	------	------	------	------	------	------	------	------	------	------	------	------	------	------	------	------	------	------	------	------	------	------	------	------	------	------	------	------	------	------	------	------	------	------	------	------	------	------	------	------	------	------	------	------	------	------	------	------	------	------	------	------	------	------	------	------	------	------	------	------	------	------	------	------	------	------	------	------	------	------	------	------	------	------	------	------	------	------	------	------	------	------	------	------	------	------	------	------	------	------	------	------	------	------	------	------	------	------	------	------	------	------	------	------	------	------	------	------	------	------	------	------	------	------	------	------	------	------	------	------	------	------	------	------	------	------	------	------	------	------	------	------	------	------	------	------	------	------	------	------	------	------	------	------	------	------	------	------	------	------	------	------	------	------	------	------	------	------	------	------	------	------	------	------	------	------	------	------	------	------	------	------	------	------	------	------	------	------	------	------	------	------	------	------	------	------	------	------	------	------	------	------	------	------	------	------	------	------	------	------	------	------	------	------	------	------	------	------	------	------	------	------	------	------	------	------	------	------	------	------	------	------	------	------	------	------	------	------	------	------	------	------	------	------	------	------	------	------	------	------	------	------	------	------	------	------	------	------	------	------	------	------	------	------	------	------	------	------	------	------	------	------	------	------	------	------	------	------	------	------	------	------	------	------	------	------	------	------	------	------	------	------	------	------	------	------	------	------	------	------	------	------	------	------	------	------	------	------	------	------	------	------	------	------	------	------	------	------	------	------	------	------	------	------	------	------	------	------	------	------	------	------	------	------	------	------	------	------	------	------	------	------	------	------	------	------	------	------	------	------	------	------	------	------	------	------	------	------	------	------	------	------	------	------	------	------	------	------	------	------	------	------	------	------	------	------	------	------	------	------	------	------	------	------	------	------	------	------	------	------	------	------	------	------	------	------	------	------	------	------	------	------	------	------	------	------	------	------	--------

3068	51	88	3068	22	3	2224	22	2224
------	----	----	------	----	---	------	----	------

[illegible]

4.50	4.75	2.00
------	------	------

THE OFFICE OF THE



THE STATE OF TEXAS

HALE COUNTY

Survey No. 34

Block No. B.

Grantee: R. M. Thompson.

FOR PLAT SEE
OTHER SIDE

CORRECTED FIELD NOTES of a re-survey of 536 acres of land situated in Hale County, about 22 miles S. 55° W. from Plainview, same

True Mag. Var. 12° E. being Section No. 34 Block B, Certificate No. issued to R. M. Thompson made by me as State Surveyor, by virtue of Title LXXXIX, Chapter One, Revised Civil Statutes of 1895.

(All courses compared to a meridian passing through East line of section No. 31, Block B and proved by observing Polaris when at elongation. Azimuth 1° 25' 26".)

BEGINNING AT piece of wire stretcher set in the south line of section 64, Block A.3, for the N.E. corner of section No 19, this block;

Thence S. 0° 58' W. at 1700.3 varas set broken wagon spindle and 3 pits in lake;

Thence S. 89° 2' E. at 150 varas leave lake, at 373 varas cross road, at 614.7 varas cross fence, at 1078 varas pass 13.5 varas south of corner post for the S.W. corner of A.J. Robbins Pre. Survey, at 1178 varas stake in field;

Thence N. 0° 58' E. at 13.5 varas cross fence, at 693 varas cross fence, at 743 varas cross road, at 963.5 varas cross north line of A.J. Robbins Pre. Sur., at 972 varas and 1445 varas cross roads, at 1438.5 vrs made 3 pits for N.W. corner of P.V. Jones Pre. Sur., at 1716.9 varas made 3 pits for the N.W. corner of A.J. Robbins S.F. Sur., at 1806 varas e cross road, at 2124 varas cross fence, at 2662.9 varas set peg for S.W. corner A.J. Baker S.F. Sur., from which 4 old pits, the N.W. corner of W.S. Boliver S.F. as originally surveyed bears S. 89° 52' W. 127.9 varas, and wagon boxing and 3 pits bear same 31 varas, at 3068 varas set stake;

Thence N. 89° 2' W. at 765.4 varas point in East Line of sec. 64, Block A.3/ from which strap iron and 3 pits bear N. 89° 2' W. 3.2 vrs;

Thence S. 0° 52' W. at 1361.7 varas set buggy top iron for S.E. corner of Section No. 64, Block A.3;

Thence N. 89° 49' W. at 327 varas set buggy seat brace, at 432 varas the place of beginning/

Bearings record true course.

W. J. WILLIAMS, Transitman.

CLAYTON WILLIAMS, } Chain Carriers.
TOM MCGEE, }

I, W. D. TWICHELL, State Surveyor, do hereby certify that the foregoing re-survey is correct and that it was made by me in the field, in accordance with law, and that the limits, boundaries and corners with the marks, natural and artificial, are truly and correctly described in the foregoing plat and field notes.

Re-surveyed 2 day of August, 1909.

APPROVED:

W. D. Twichell
State Surveyor.

Commissioner General Land Office.

File No.

County.

Corrected Field Notes

Survey No.

Filed

190

Commissioner.

File Clerk.

Commissioner General Land Office.

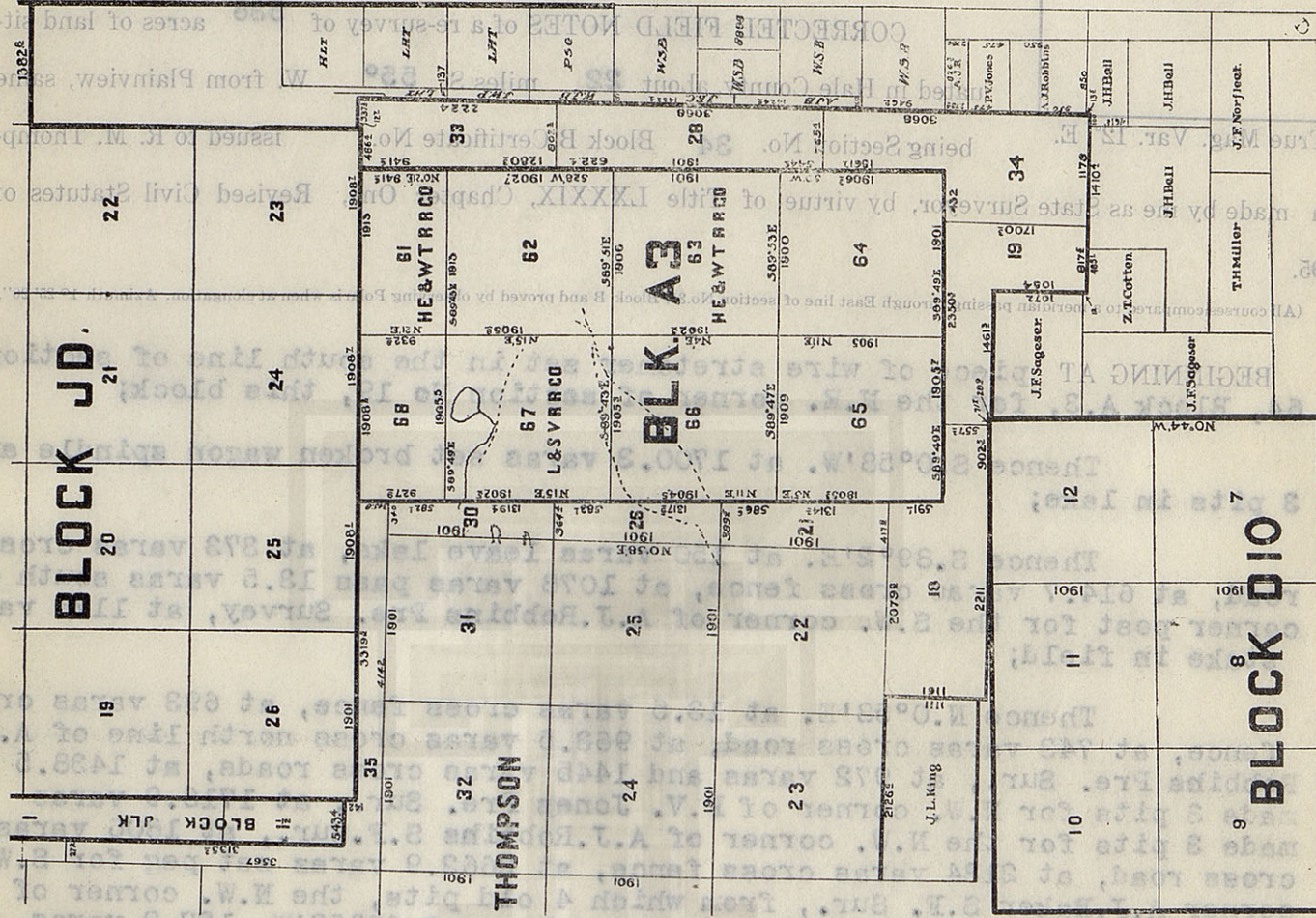
Re-surveyed 2 day of August, 1909.

APPROVED:

W. J. WILLIAMS, Transcriber.

Bearings record true course.

Surveyed with Buff Solar Transit No. 6741



Grantee: R. M. Thompson.

Block No. B.

Survey No. 24

HALE COUNTY
THE STATE OF TEXAS

OTHER SIDE
FOR PLAT SEE

THE STATE OF TEXAS

HALE COUNTY

FOR PLAT SEE
OTHER SIDE

Survey No. 35

Block No. B.

Grantee: R. M. Thompson.

CORRECTED FIELD NOTES of a re-survey of 400 acres of land sit-

uated in Hale County, about 23 miles S. 69° W. from Plainview, same

True Mag. Var. 12° E.

being Section No. 35

Block B, Certificate No.

issued to R. M. Thomp-

son made by me as State Surveyor, by virtue of Title LXXXIX, Chapter One, Revised Civil Statutes of 1895.

(All courses compared to a meridian passing through East line of section No. 31, Block B and proved by observing Polaris when at elongation. Azimuth 1° 25' 20".)

BEGINNING AT

the N.W. corner of section No. 32, this Block;

Thence S. 89° 2' E. at 1901 varas set cedar post 3"x24", at 3802 varas set cement rock 8x6x6" and 3 pits, at 4142 varas set strap iron in lake for the N.E. corner of section No. 30 and in the west line of section No. 68, Block A.3;

Thence N. 0° 11' E. at 345.8 varas set casting marked R(5 and 3 pits in the south line of section No. 25, Block J.D.;

Thence West at 1418.5 varas pass the S.W. corner of said No. 25, at 3819.5 varas set cement rock 10x6x4 inches and 4 pits for the S.W. corner of Section No. 26, Block J.D.;

Thence North at 142 varas set piece of land and 3 pits;

Thence N. 89° 2' W. at 542.4 varas set cedar post 6"x30" for the re-entrant corner of this section;

Thence N. 0° 58' E. at 3135.2 varas the S.E. corner of section No. 36; Thence N. 89° 2' W. 272 varas to point in the east line of sec-

Bearings record true course. then No. 9, 462 vrs from its N.E. cor;

W. J. WILLIAMS, Transitman. Thence S. 0° 58' W. 3567 varas to the place of beg.

CLAYTON WILLIAMS, } Chain Carriers.
TOM MCGEE, }

I, W. D. TWICHELL, State Surveyor, do hereby certify that the foregoing re-survey is correct and that it was made by me in the field, in accordance with law, and that the limits, boundaries and corners with the marks, natural and artificial, are truly and correctly described in the foregoing plat and field notes.

Re-surveyed 2nd day of August, 1909.

APPROVED:

State Surveyor.

Commissioner General Land Office.

File No.

County.

Corrected Field Notes

Survey No.

Filed

Commissioner.

File Clerk.

Commissioner General Land Office

Re-surveyed day of August, 1909.

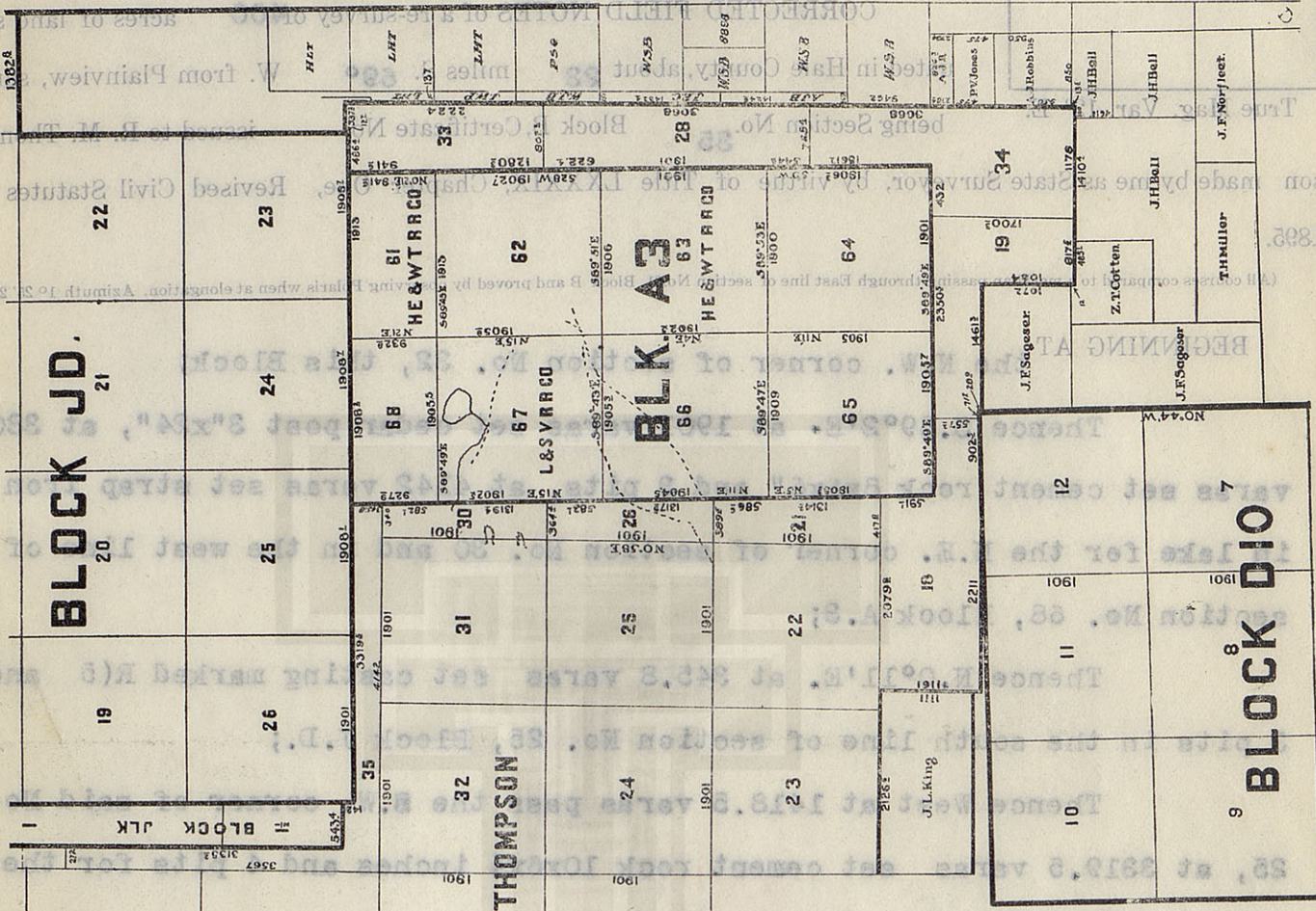
APPROVED:

It was made by me in the field, in accordance with the laws of this State, and the limits, boundaries and corners of the land described in the foregoing plat and field notes, are truly and correctly described in the foregoing plat and field notes.

W. J. WILLIAMS, Transcriber.
Bearing's record true course, 1909.
No. 35; Thence N. 89° 32' W. 2507 varas to point in the east line of section 25; Thence N. 0° 58' E. at 3135.2 varas the S.E. corner of section the re-surveyed corner of this section;

Thence N. 89° 32' W. at 543.4 varas set cedar post 6"x8" for Thence North at 142 varas set piece of beam and 3 pipes; E.W. corner of Section No. 26, Block J.D.

BLOCK J.D.



FOR PLAT SEE
OTHER SIDE

THE STATE OF TEXAS

HALE COUNTY

Survey No. 35

Block No. B.

Grantee: R. M. Thompson.

THE STATE OF TEXAS

HALE COUNTY

Survey No. 63

Block No. A3.

Grantee: H. E. & W. T. R. R. Co.,

FOR PLAT SEE
OTHER SIDE

CORRECTED FIELD NOTES of a re-survey of 640.8 acres of land situated in Hale County, about 20 miles S. 58° W from Plainview, same

True Mag. Var. 12° E. being Section No. 63 Block A3, Certificate No. 409 issued to H. E. & W. T. R. R. Co., made by me as State Surveyor, by virtue of Title LXXXIX, Chapter One, Revised Civil Statutes of 1895.

(All courses compared to a meridian passing through West line of Block A3, and proved by observing Polaris when at elongation. Azimuth 1° 25' 20".)

BEGINNING AT a 1-1/2" iron pipe set by stone set in ground by Surveyor J. H. Parks, for the S.E. corner of section No. 62, this block;

Thence S. 0° 15' W. at 1901 varas set cultivator shoe and 4 pits in lake for the N.E. corner of section No. 64;

Thence N. 89° 53' W. at 403.9 varas set single tree clip and 4 pits, at 1900 varas set cultivator shoe and in north edge of small mesquite valley;

Thence N. 0° 4' E. at 561 varas set piece of iron, at 1902.5 varas set stove iron by several small stones, the remains of Corner set by Surveyor Parks, a corner post burned to the ground, bears east 9.6 varas;

Thence S. 89° 51' E. at 1222 varas pass the north end of hog wallow, at 1262 varas cross road, at 1525.7 varas set strap iron and 2 pits, at 1906 varas the place of beginning.

Bearings record true course.

W. J. WILLIAMS, Transitman.

CLAYTON WILLIAMS, } Chain Carriers.
TOM MCGEE. }

I, W. D. TWICHELL, State Surveyor, do hereby certify that the foregoing re-survey is correct and that it was made by me in the field, in accordance with law, and that the limits, boundaries and corners with the marks, natural and artificial, are truly and correctly described in the foregoing plat and field notes.

Re-surveyed 2nd, day of August, 1909.

APPROVED:

W. D. Twichell
State Surveyor.

Commissioner General Land Office.

File No.

County.

Corrected Field Notes

Survey No.

Filed

190

Commissioner.

File Clerk.

Commissioner General Land Office.

APPROVED:

Re-surveyed

2nd day of August, 1909.

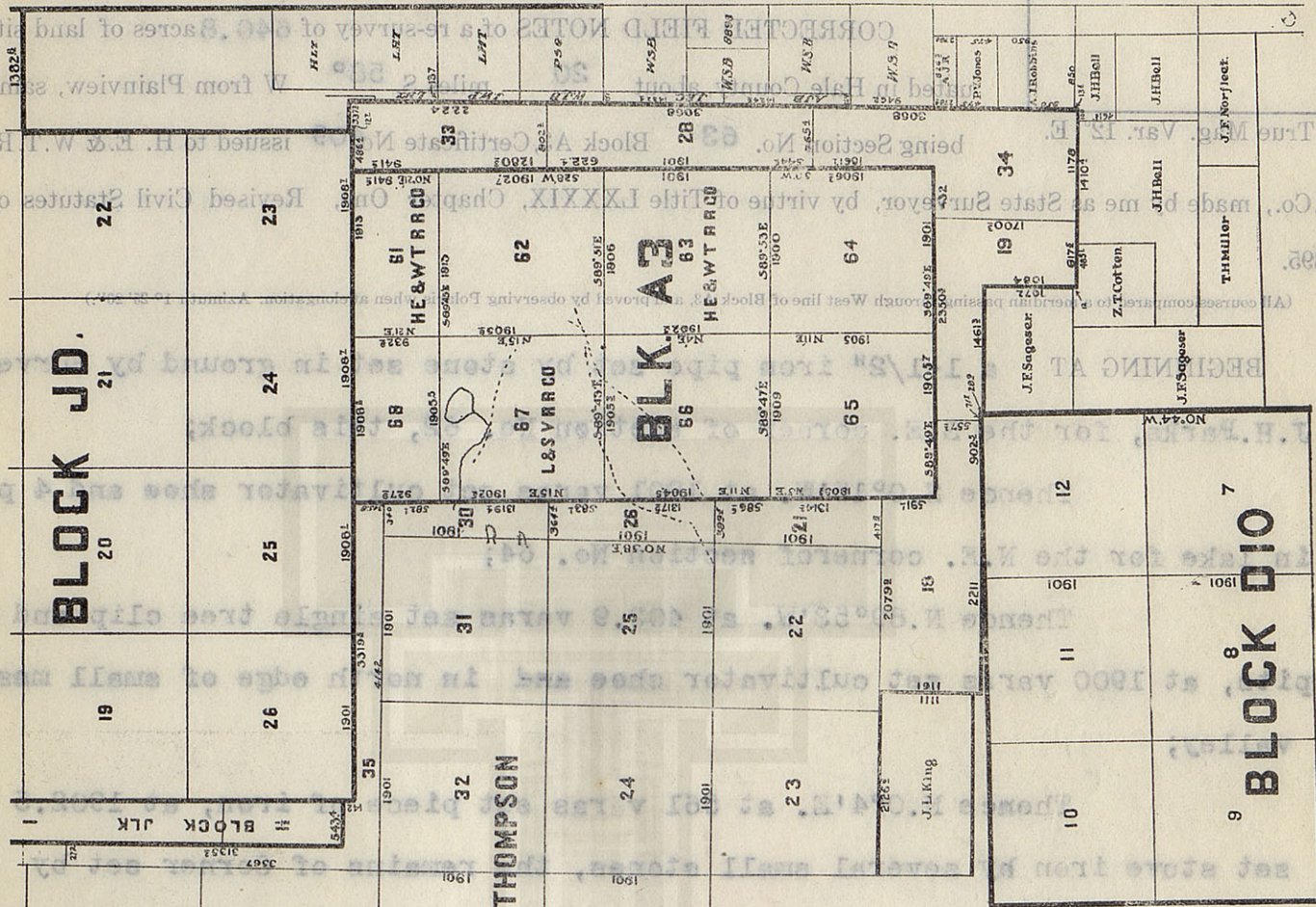
It was made by me in the field, in accordance with law, and the limits, boundaries and corners with the marks, natural and artificial, are truly and correctly described in the foregoing plat and field notes.

CLAYTON WILLIAMS, Chain Carriers.
TOM MOGGER, State Surveyor.

Surveyed with Buft Solar Transit No. 6741

W. J. WILLIAMS, Transitman.
Bearings record true course.

at 1906 varies the place of beginning.
yellow, at 1902 varies cross road, at 1903.7 varies set strap iron and 2 pipe,
Thence S. 89° 51' E. at 1902 varies pass the north end of hog
Surveyor Parks, a corner post buried in the ground, bears east 9.6 varies;



Grantee: H.E. & W.T. R.R. Co.
Block No. A3.
Survey No. 63

HALE COUNTY
THE STATE OF TEXAS

FOR PLAT SEE
OTHER SIDE

THE STATE OF TEXAS

HALE COUNTY

Survey No. 61

Block No. A3.

Grantee: H. E. & W. T. R. R. Co.,

FOR PLAT SEE
OTHER SIDE

CORRECTED FIELD NOTES of a re-survey of 317.6 acres of land situated in Hale County, about 19 miles S. 64° W from Plainview, same

True Mag. Var. 12° E.

being Section No. 61 Block A3, Certificate No. 408 issued to H. E. & W. T. R.

R. Co., made by me as State Surveyor, by virtue of Title LXXXIX, Chapter One, Revised Civil Statutes of 1895.

(All courses compared to a meridian passing through West line of Block A3, and proved by observing Polaris when at elongation. Azimuth 1° 25' 20".)

BEGINNING AT 4 pits set for the S.E. corner of this section No. 61, about 1 mile west of the S.W. corner of section No. 14, B.L. & R.R.R. Co. by State Surveyor J.H. Parks;

Thence N. 89° 45' W. at 363.4 varas set stone in line, at 409 varas cross road, at 1913 varas old cedar stake and stone buried at corner of fence, set by J.H. Parks, State Surveyor;

Thence N. 0° 21' E. at 555 varas set buggy hub and 2 pits, at 871 varas old pit made by J.H. Parks, at 932.8 varas set stone and 2 pits in the south line of section No. 24, Block J.D;

Thence East at 490.7 varas set 4 pits and 1/2" pipe for the S.E. corner of said section No. 24, at 1913 varas point in the south line of section No. 23, Block J.D;

Thence S. 0° 21' W. at 800 varas pass old pit made by Surveyor Parks, at 941.6 varas the place of beginning.

Bearings record true course.

W. J. WILLIAMS, Transitman.

CLAYTON WILLIAMS, } Chain Carriers.
TOM MCGEE. }

I, W. D. TWICHELL, State Surveyor, do hereby certify that the foregoing re-survey is correct and that it was made by me in the field, in accordance with law, and that the limits, boundaries and corners with the marks, natural and artificial, are truly and correctly described in the foregoing plat and field notes.

Re-surveyed 5th day of August, 1909.

APPROVED:

W. D. Twichell
State Surveyor.

Commissioner General Land Office.

File No.

County.

Corrected Field Notes

Survey No.

Filed

190

Commissioner.

File Clerk.

Commissioner General Land Office.

APPROVED:

Resurveyed day of August, 1909.

it was made by me in the field, in accordance with law, and that the limits, boundaries and corners with the marks, natural and artificial, are truly and correctly described in the foregoing plat and field notes.

W. J. WILLIAMS, Transitman.

Bearings record true course.

Surveyed with Buft Solar Transit No. 6741

Thence S. 0° 21' W. at 800 varas pass old pit made by Surveyor Parks, at 941.6 varas the place of beginning.

S. & S. corner of section No. 28, Block J. D.; Thence

in the north line of section No. 24, Block J. D. at 1901.3 varas old pit made by Surveyor

of section No. 28, Block J. D. at 1913 varas old pit made by Surveyor

of section No. 28, Block J. D. at 1913 varas old pit made by Surveyor

of section No. 28, Block J. D. at 1913 varas old pit made by Surveyor

of section No. 28, Block J. D. at 1913 varas old pit made by Surveyor

of section No. 28, Block J. D. at 1913 varas old pit made by Surveyor

of section No. 28, Block J. D. at 1913 varas old pit made by Surveyor

of section No. 28, Block J. D. at 1913 varas old pit made by Surveyor

of section No. 28, Block J. D. at 1913 varas old pit made by Surveyor

of section No. 28, Block J. D. at 1913 varas old pit made by Surveyor

of section No. 28, Block J. D. at 1913 varas old pit made by Surveyor

of section No. 28, Block J. D. at 1913 varas old pit made by Surveyor

of section No. 28, Block J. D. at 1913 varas old pit made by Surveyor

of section No. 28, Block J. D. at 1913 varas old pit made by Surveyor

of section No. 28, Block J. D. at 1913 varas old pit made by Surveyor

of section No. 28, Block J. D. at 1913 varas old pit made by Surveyor

THE STATE OF TEXAS

HALE COUNTY

Survey No. 65

Block No. A3.

Grantee: L & S. V. R.R. Co.,

FOR PLAT SEE
OTHER SIDE

CORRECTED FIELD NOTES of a re-survey of 648.8 acres of land situated in Hale County, about 22 miles S. 53° W from Plainview, same

True Mag. Var. 12° E. being Section No. 65 Block A3, Certificate No. 59 issued to L. & S. V. R. R. Co., made by me as State Surveyor, by virtue of Title LXXXIX, Chapter One, Revised Civil Statutes of 1895.

(All courses compared to a meridian passing through West line of Block A3, and proved by observing Polaris when at elongation. Azimuth 1° 25' 20".)

BEGINNING AT 4 old pits made by State Surveyor, J.H. Parks, for the S.W. corner of section No. 64, this Block, from which old gateway bears S. 38° W. 1000 varas;

Thence N. 89° 49' W. at 132.3 varas cross fence, at 328.8 varas 4 old pits, at 835 varas cross road, at 1070 varas, old pit, at 1600 varas to 1753 varas cross lake, at 1905.7 varas, 4 old pits and iron rod set by State Surveyor Parks;

Thence N. 0° 5' E. at 591.1 varas set stake for the S.E. corner of section No. 21, Block B, at 316.4 varas and 1423 varas pass old pits made by Surveyor Parks, at 1845 varas cross road, at 1905.3 varas old cedar stake, 4 old pits and iron rod, set by Surveyor Parks;

Thence S. 89° 47' E. at 1504 varas set buggy hame and 3 pits, at 1909 varas set shoe of two row planter in north edge of small mesquite valley;

Thence S. 0° 11' W. at 739 varas cross draw, at 1340 varas set piece of iron in field, at 1530 varas to 1589 varas cross lake, at 1905 varas the place of Beginning.
Bearings record true course.
W. J. WILLIAMS, Transitman.

CLAYTON WILLIAMS, } Chain Carriers.
TOM MCGEE, }

I, W. D. TWICHELL, State Surveyor, do hereby certify that the foregoing re-survey is correct and that it was made by me in the field, in accordance with law, and that the limits, boundaries and corners with the marks, natural and artificial, are truly and correctly described in the foregoing plat and field notes.

Re-surveyed 5th day of August, 1909.

APPROVED:

W. D. Twichell
State Surveyor.

Commissioner General Land Office.

File No.

County.

Corrected Field Notes

Survey No.

Filed

Commissioner.

File Clerk.

Commissioner General Land Office.

APPROVED:

Re-surveyed 5th day of August, 1909.

I, W. D. TWICHELL, State Surveyor, do hereby certify that the foregoing survey is correct and that it was made by me in the field, in accordance with law, and that the limits, boundaries and corners with the marks, natural and artificial, are truly and correctly described in the foregoing plat and field notes.

CLAYTON WILLIAMS, Chain Carrier.

Surveyed with Buff Solar Transit No. 6741

W. J. WILLIAMS, Transmitter.
Bearings record true course.

Thence S. 89° 47' E. at 1504 varas set buoy home and 3 pits,
at 1909 varas set shore of two row planter in north edge of small meadow
valley;

Thence S. 89° 47' E. at 1504 varas set buoy home and 3 pits,

at 1909 varas set shore of two row planter in north edge of small meadow
valley;

cedar stakes, 4 old pits and iron rod, set by Surveyor Parker;
made by Surveyor Parker, at 1845 varas cross road, at 1908.8 varas old
of section No. 21, Block B, at 816.4 varas and 1823 varas from old pits

Thence 1908.1 at 591.1 varas set stake for
set by State Surveyor Parker;
varas 1723 varas from stake, at 1908.7 varas, 4 old pits and iron rod

varas 1723 varas from stake, at 1908.7 varas, 4 old pits and iron rod
4 stakes, at 1855 varas cross road, at 1908.8 varas
S. 89° 47' E. at 1504 varas

varas 1723 varas from stake, at 1908.7 varas, 4 old pits and iron rod
4 stakes, at 1855 varas cross road, at 1908.8 varas
S. 89° 47' E. at 1504 varas

varas 1723 varas from stake, at 1908.7 varas, 4 old pits and iron rod
4 stakes, at 1855 varas cross road, at 1908.8 varas
S. 89° 47' E. at 1504 varas

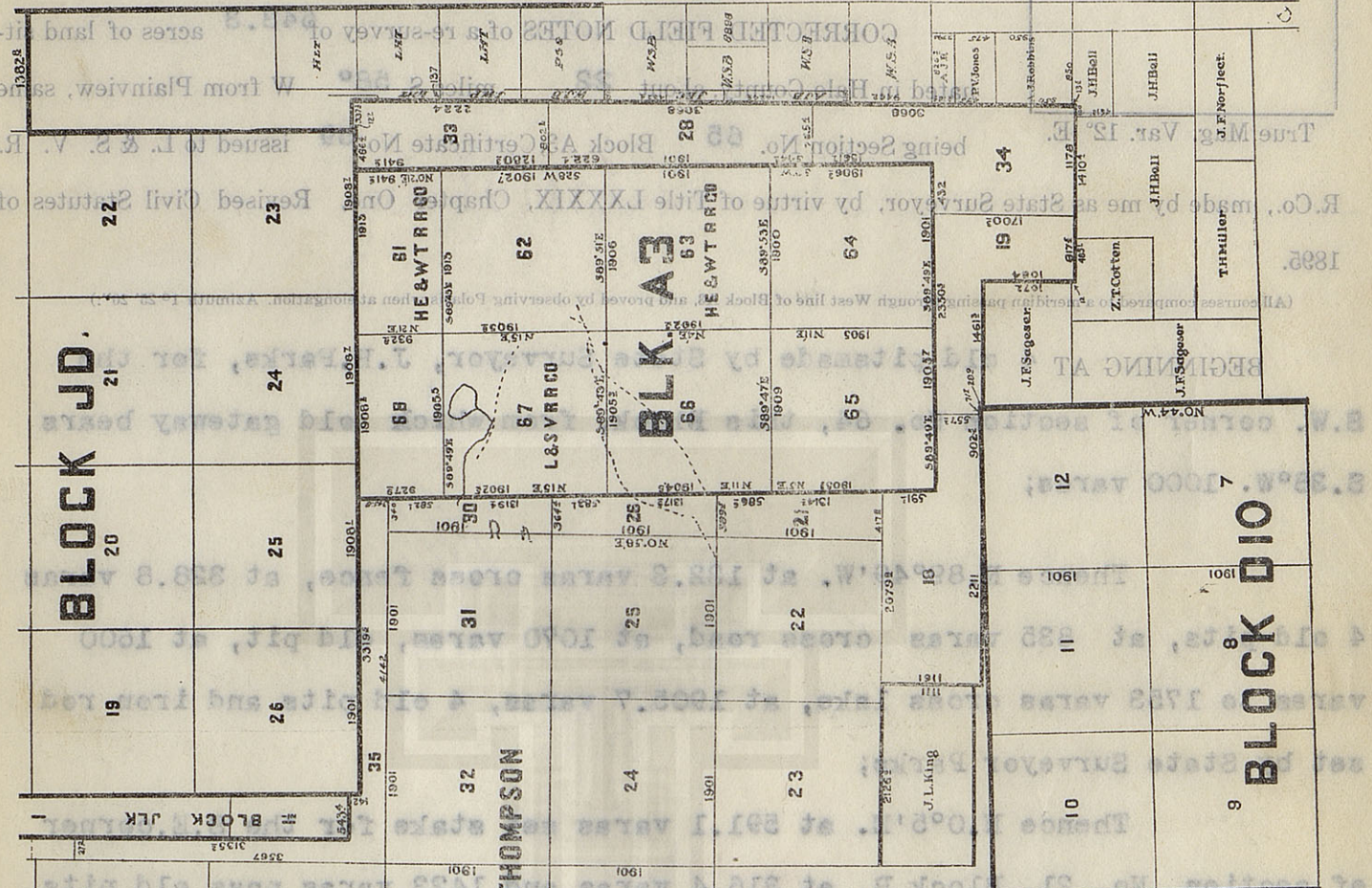
varas 1723 varas from stake, at 1908.7 varas, 4 old pits and iron rod
4 stakes, at 1855 varas cross road, at 1908.8 varas
S. 89° 47' E. at 1504 varas

varas 1723 varas from stake, at 1908.7 varas, 4 old pits and iron rod
4 stakes, at 1855 varas cross road, at 1908.8 varas
S. 89° 47' E. at 1504 varas

varas 1723 varas from stake, at 1908.7 varas, 4 old pits and iron rod
4 stakes, at 1855 varas cross road, at 1908.8 varas
S. 89° 47' E. at 1504 varas

varas 1723 varas from stake, at 1908.7 varas, 4 old pits and iron rod
4 stakes, at 1855 varas cross road, at 1908.8 varas
S. 89° 47' E. at 1504 varas

varas 1723 varas from stake, at 1908.7 varas, 4 old pits and iron rod
4 stakes, at 1855 varas cross road, at 1908.8 varas
S. 89° 47' E. at 1504 varas



Grantor: L & S. V. R. R. Co.
Block No. A3.
Survey No. 65

HALE COUNTY
THE STATE OF TEXAS

OTHER SIDE
FOR PLAT SEE

THE STATE OF TEXAS

HALE COUNTY

Survey No. 67

Block No. A3.

Grantee: L & S. V. R.R. Co.,

FOR PLAT SEE
OTHER SIDE

CORRECTED FIELD NOTES of a re-survey of ^{642.5} acres of land situated in Hale County, about 21 miles S. 63° W from Plainview, same

being Section No. 67, Block A3, Certificate No. 60 issued to L. & S. V. R. R. Co., made by me as State Surveyor, by virtue of Title LXXXIX, Chapter One, Revised Civil Statutes of 1895.

(All courses compared to a meridian passing through West line of Block A3, and proved by observing Polaris when at elongation. Azimuth $1^{\circ} 25' 20''$.)

BEGINNING AT old mound several white stones and iron rod set by State Surveyor J.H.Parks for the N.W. corner of section No. 66, this block from which old well bears N.76-1/2°E. 162 varas;

Thence N.0°15'E. at 1687 varas cross draw, at 1902.5 varas set iron pipe by old stone in pit, the remains of corner made by Surveyor Parks;

Thence S.89°49'E. at 983 varas old trail, at 1554.3 varas set stove fender and 3 pits, at 1618 varas cross old trail, at 1866 varas old pit under fence, at 1905.3 varas, old cedar stake and stone 10" long buried beside corner post;

Thence S.0°15'W. at 1345.9 varas set stove door and 3 pits, at 1717 varas cross road, at 1905.3 varas set stove iron by several small stones the remains of corner made by surveyor Parks, from which corner post burned to the ground bears East 9.6 varas;

Thence N.89°43'W. at 389.3 varas set cedar post and wagon iron, at 650 varas cross road, at 1905.3 varas the place of beginning.

Bearings record true course.

W. J. WILLIAMS, Transitman.

CLAYTON WILLIAMS, } Chain Carriers.
TOM MCGEE. }

I, W. D. TWICHELL, State Surveyor, do hereby certify that the foregoing re-survey is correct and that it was made by me in the field, in accordance with law, and that the limits, boundaries and corners with the marks, natural and artificial, are truly and correctly described in the foregoing plat and field notes.

Re-surveyed 5th day of August, 1909.

APPROVED:

W. D. Twichell
State Surveyor.

Commissioner General Land Office.

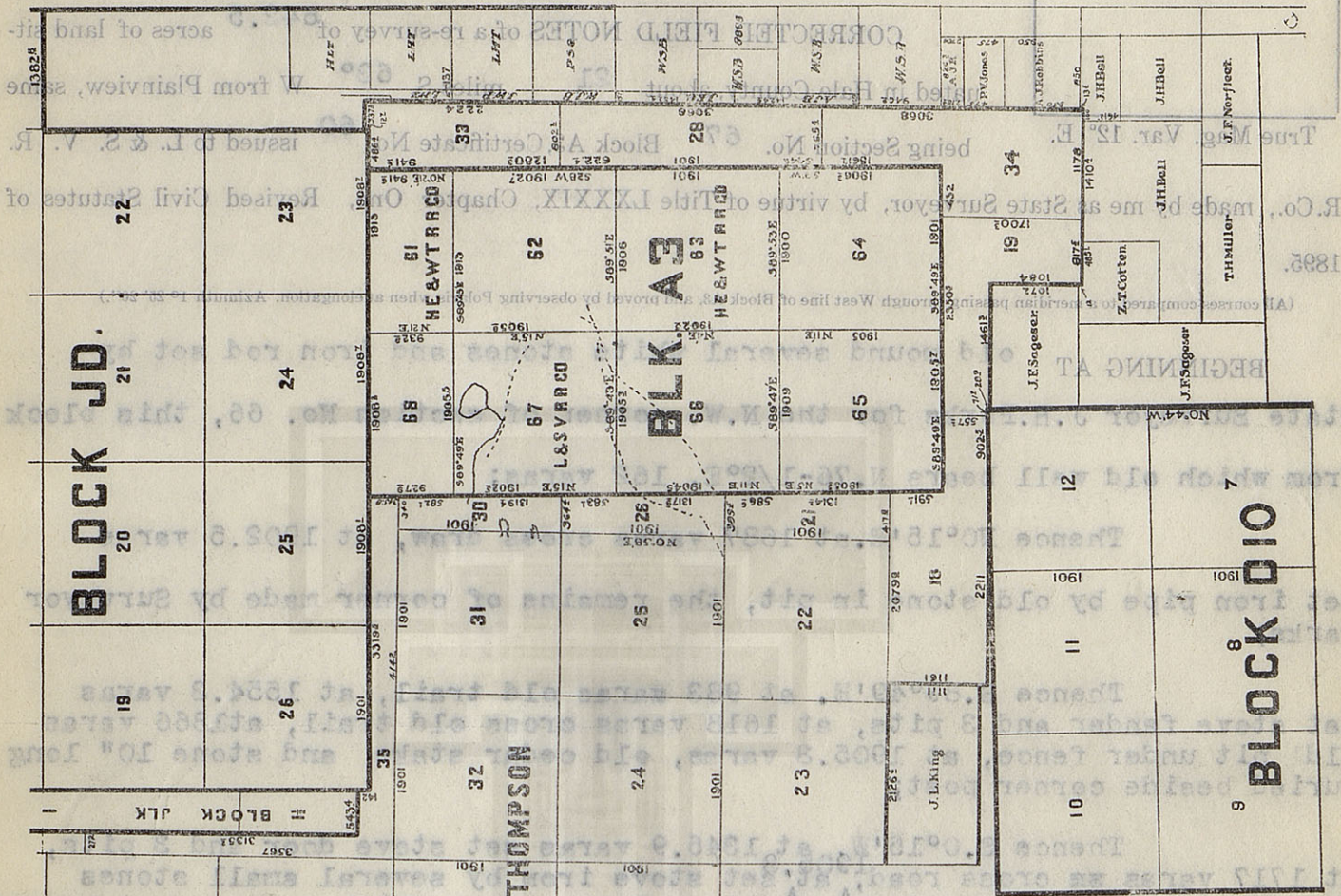
County.	Commissioner.	File Clerk.
Corrected Field Notes		
Survey No.	Filed	
190		

APPROVED: _____
Resurveyed _____
day of August, 1909.

W. J. WILLIAMS, Transliterator.

Bearings record true course.

Surveyed with Buff Solar Transit No. 6741



THE STATE OF TEXAS

HALE COUNTY

Survey No. 22

Block No. B.

Grantee: R. M. Thompson.

FOR PLAT SEE
OTHER SIDE

CORRECTED FIELD NOTES of a re-survey of 640 acres of land situated in Hale County, about 22 miles S. 60° W. from Plainview, same

True Mag. Var. 12° E. being Section No. 22 Block B, Certificate No. issued to R. M. Thompson made by me as State Surveyor, by virtue of Title LXXXIX, Chapter One, Revised Civil Statutes of 1895.

(All courses compared to a meridian passing through East line of section No. 31, Block B and proved by observing Polaris when at elongation. Azimuth 1° 25' 20".)

BEGINNING AT a cement rock 12x10x8" and 3 pits ~~see~~ for the S.W. cor. of section No. 21, this block;

at 1007 varas, and 1630 varas cross roads,
Thence N. ~~222~~ 39° 2' W. at 1649.4 varas pass piece of Buck Stove and 3 pits, at 1662 varas pass the N.W. corner of section No. 18, at 1901 varas set cement rock 10x6x6 inches in field;

Thence N. 0° 58' E. at 214.7 varas set cement rock 14x8x8" and 3 pits under fence, at 1901 varas set cedar post 4"x36" in hard land;

Thence S. 39° 2' E. at 1901 varas set wagon spindle and 2 pits;

Thence S. 0° 58' W. at 1156 varas cross road, at 1901 varas the place of beginning.

Surveyed with Burt Solar Transit No. 6741

Bearings record true course.

W. J. WILLIAMS, Transitman.

CLAYTON WILLIAMS, } Chain Carriers.
TOM MCGEE. }

I, W. D. TWICHELL, State Surveyor, do hereby certify that the foregoing re-survey is correct and that it was made by me in the field, in accordance with law, and that the limits, boundaries and corners with the marks, natural and artificial, are truly and correctly described in the foregoing plat and field notes.

Re-surveyed 7 day of August, 1909.

APPROVED:

W. D. Twichell
State Surveyor.

Commissioner General Land Office.

File No.

County.

Corrected Field Notes

Survey No.

Filed

190

Commissioner.

File Clerk.

Commissioner General Land Office.

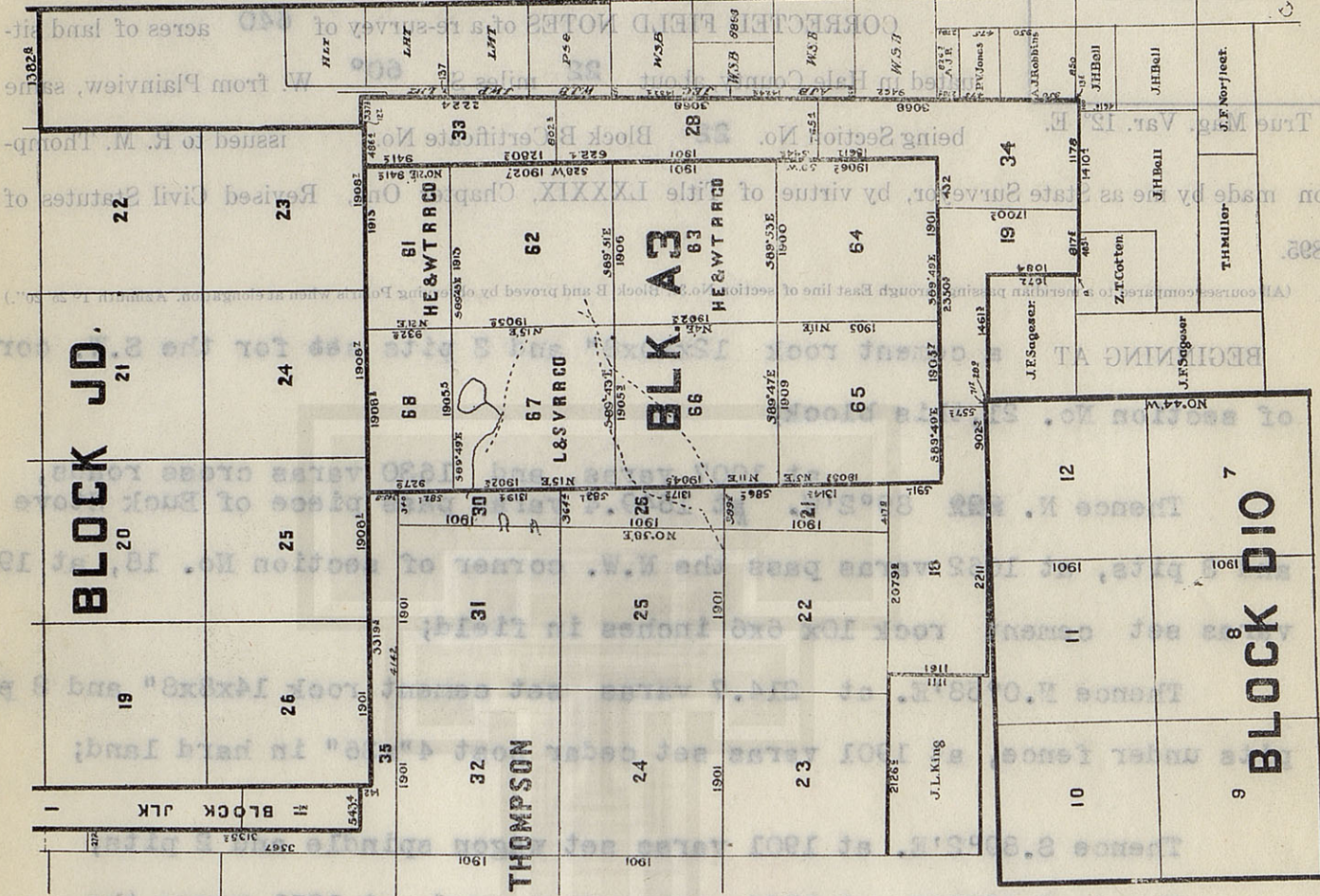
Re-surveyed 7 day of August, 1908.

APPROVED:

W. J. WILLIAMS, Transcriber.

Bearings record true course.

Surveyed with Buff Solar Transit No. 6741



Grantee: R. M. Thompson.

Block No. B.

Survey No. 22

THE STATE OF TEXAS

HALE COUNTY

OTHER SIDE
FOR PLAT SEE

THE STATE OF TEXAS

HALE COUNTY

Survey No. 23

Block No. B.

Grantee: R. M. Thompson.

FOR PLAT SEE
OTHER SIDE

CORRECTED FIELD NOTES of a re-survey of 640 acres of land situated in Hale County, about 23 miles S. 60° W. from Plainview, same

being Section No. 23 Block B, Certificate No. issued to R. M. Thompson made by me as State Surveyor, by virtue of Title LXXXIX, Chapter One, Revised Civil Statutes of 1895.

(All courses compared to a meridian passing through East line of section No. 31, Block B and proved by observing Polaris when at elongation. Azimuth $1^{\circ} 25' 20''$.)

BEGINNING AT a cement rock set in field for the S.W. corner of section No. 22, this block;

Thence N. $89^{\circ} 2' W$. at 311.4 varas cross fence, at 400 varas to 700 varas cross lake, at 1337.6 varas cross fence, at 1901 varas set stake

Thence N. $0^{\circ} 53' E$. at 210.3 varas set horse shoe in 4 pits from which casting at fence corner bears east 10.3 varas, at 550 varas to 950 varas cross lake, at 1901 varas set 2 pits from which strap iron 1"x10" under fence bears west 3 varas;

Thence S. $89^{\circ} 2' E$. at 1901 varas set cedar post 4"x36" in hard ground;

Thence S. $0^{\circ} 53' W$. at 1336.3 varas set cement rock 14x8x8" and 3 pits under fence, at 1901 varas the place of beginning.

Surveyed with Bull's Eye Transit No. 0741

Bearings record true course.

W. J. WILLIAMS, Transitman.

CLAYTON WILLIAMS, } Chain Carriers.
TOM MCGEE.

I, W. D. TWICHELL, State Surveyor, do hereby certify that the foregoing re-survey is correct and that it was made by me in the field, in accordance with law, and that the limits, boundaries and corners with the marks, natural and artificial, are truly and correctly described in the foregoing plat and field notes.

Re-surveyed 7 day of August, 1909.

APPROVED:

W. D. Twichell
State Surveyor.

Commissioner General Land Office.

File No. _____

County.

Corrected Field Notes

Survey No.: _____

Filed _____ 190_____

Commissioner.

File Clerk.

Commissioner General Land Office.

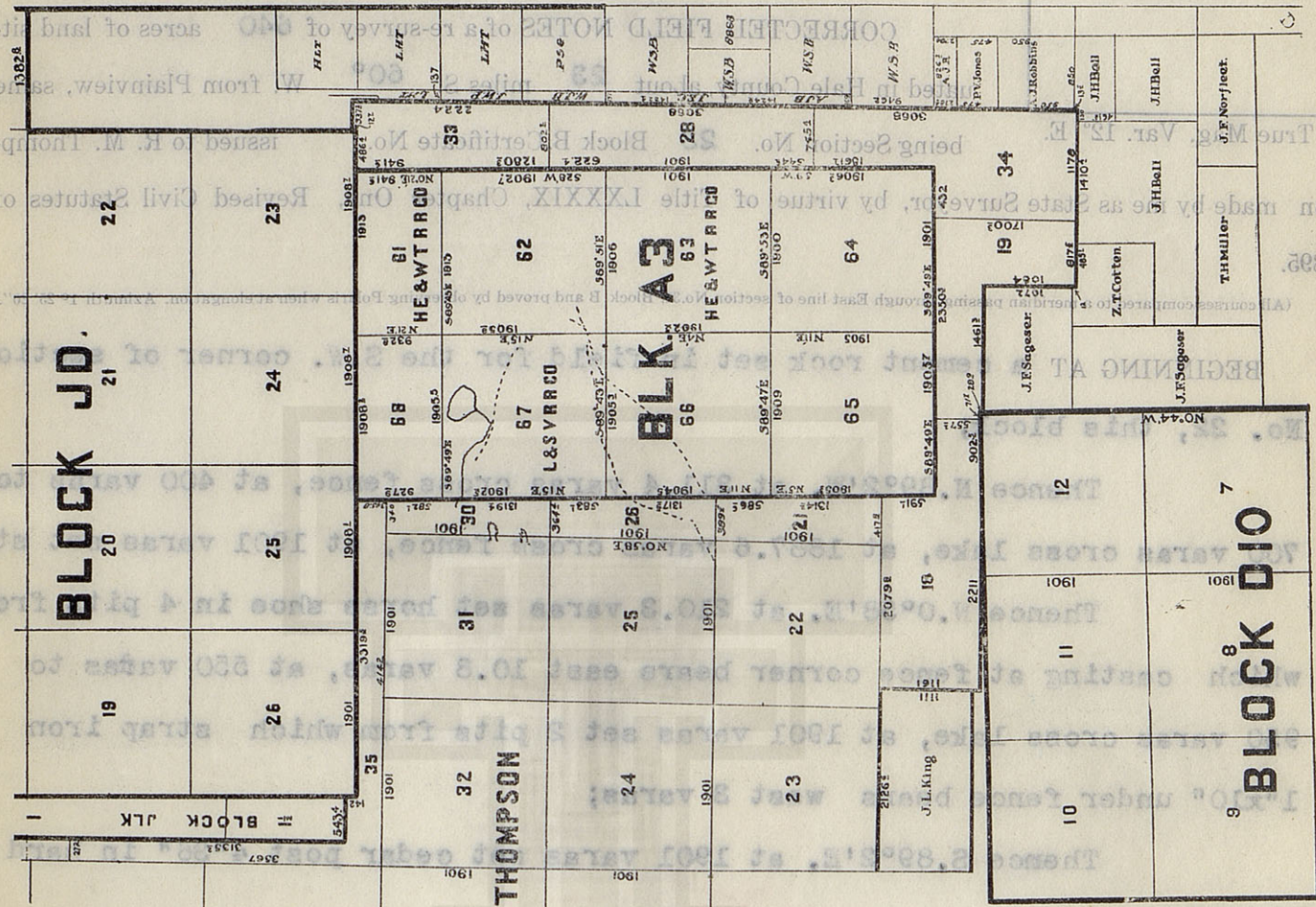
APPROVED:

Re-surveyed 7 day of August, 1909.

W. J. WILLIAMS, Transition.

Bearings record true course.

Surveyed with Buff Solar Transit No. 6741



THE STATE OF TEXAS

LAMB COUNTY

FOR PLAT SEE
OTHER SIDE

Survey No. 1

Block No. B.

Grantee: R. M. Thompson.

CORRECTED FIELD NOTES of a re-survey of 576 acres of land sit-

uated in Lamb County, about 7 miles S. 40° W. from Olton, same

being Section No. 1 Block B, Certificate No. issued to R. M. Thompson made by me as State Surveyor, by virtue of Title LXXXIX, Chapter One, Revised Civil Statutes of 1895.

(All courses compared to a meridian passing through East line of section No. 31, Block B and proved by observing Polaris when at elongation. Azimuth 19° 25' 20".)

BEGINNING AT a 3" hackberry stake and iron hame set at the Corner of Capitol Syndicate fence, the N.E. corner of League No. 637, Capitol Land Reservation as located by W.D. Twichell and A.S. Howren in 1886.

Thence N. 0° 58' E. at 1694 varas set a cedar post in the south line of Section No. 6, Block 0.5;

Thence East at 734 varas set a cement rock 14x8x6, the S.E. corner of said Survey No. 6, at 1902.4 varas set cedar post;

Thence S. 0° 58' W. at 1726 varas set 3" hackberry stake and 1"x24" sharp iron;

Thence N. 89° 2' W. 1902 varas to the place of beginning.

Bearings record true course.

W. J. WILLIAMS, Transitman.

CLAYTON WILLIAMS, } Chain Carriers.
TOM MCGEE, }

I, W. D. TWICHELL, State Surveyor, do hereby certify that the foregoing re-survey is correct and that it was made by me in the field, in accordance with law, and that the limits, boundaries and corners with the marks, natural and artificial, are truly and correctly described in the foregoing plat and field notes.

Re-surveyed 10 day of August, 1909.

APPROVED:

W. D. Twichell
State Surveyor.

Commissioner General Land Office.

File No.

County.

Corrected Field Notes

Survey No.

Filed

190

Commissioner.

File Clerk.

Commissioner General Land Office.

APPROVED:

Re-surveyed

day of August, 1903.

marks, natural and artificial, are truly and correctly described in the foregoing plat and field notes.

CLAYTON WILLIAMS, Chain Carrier.

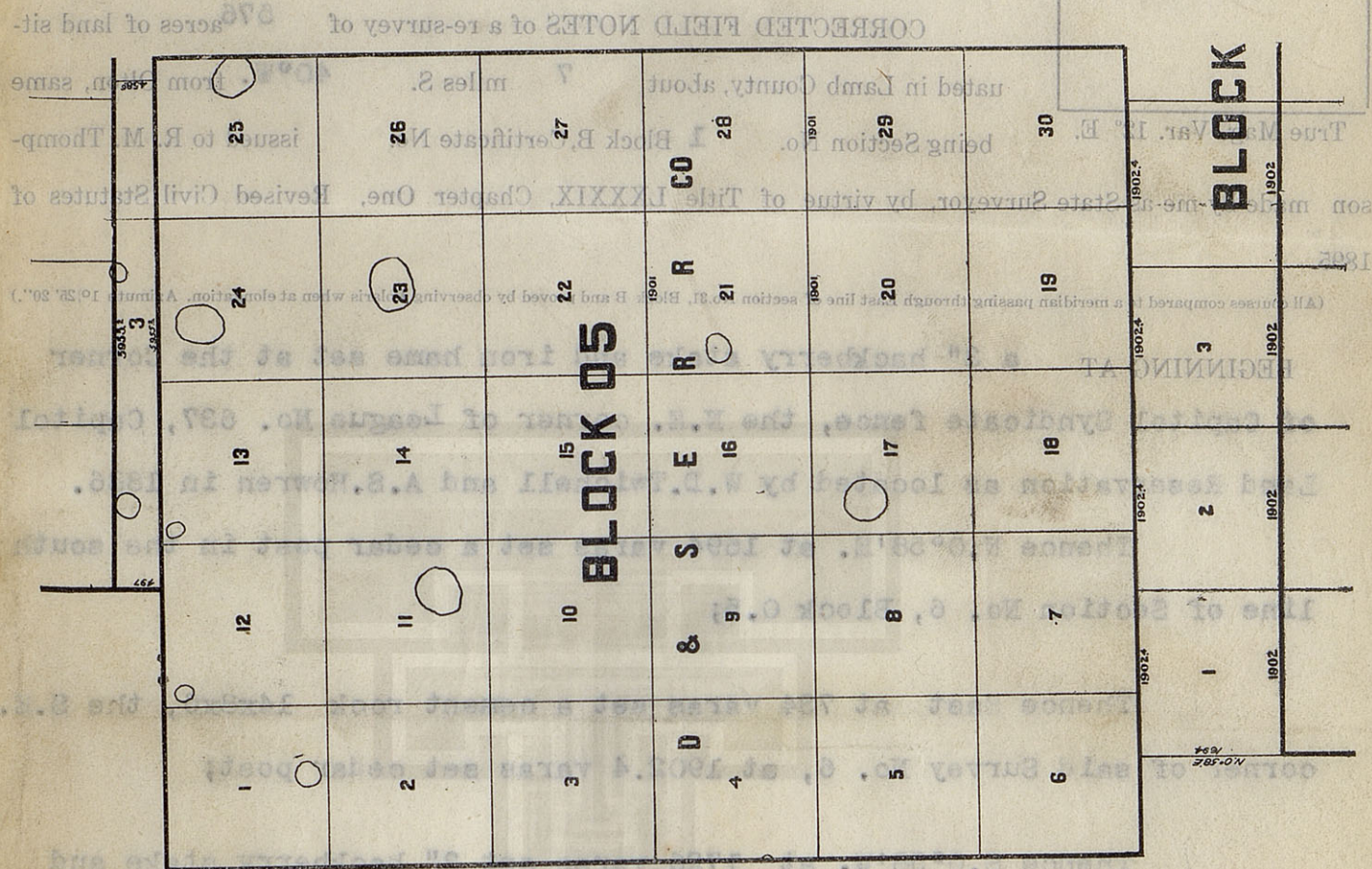
Surveyed with Buff Solar Transit No. 6741

W. J. WILLIAMS, Transcriber.

Bearings record true course.

Thence N. 89° 2' W. 1902 varies to the place of beginning.

1"x24" sharp iron;



THE STATE OF TEXAS

LAMB COUNTY

FOR PLAT SEE
OTHER SIDE

Survey No. 2

Block No. B.

Grantee: R. M. Thompson.

CORRECTED FIELD NOTES of a re-survey of 536.3 acres of land sit-

uated in Lamb County, about 6 miles S. 35°W. from Olton, same

True Mag. Var. 12° E.

being Section No. 2 Block B, Certificate No. issued to R. M. Thomp-

son made by me as State Surveyor, by virtue of Title LXXXIX, Chapter One, Revised Civil Statutes of 1895.

(All courses compared to a meridian passing through East line of section No. 31, Block B and proved by observing Polaris when at elongation. Azimuth 1° 25' 20".)

BEGINNING AT a 3" hackberry stake and 1x24" sharp iron set for the S.E. corner of section No. 1, this block;

Thence N. 0° 58' E. at 1726 varas set a cedar post in the south line of section No. 7, Block O.5;

Thence East at 732.6 varas set 5 gallon oil can and wagon brake lever for the S.E. corner of said section No. 7, at 1902.4 varas set cedar post 3x30";

Thence S. 0° 58' W. at 1758 varas set a cedar post 6"x30";

Thence N. 89° 2' W. 1902 varas to the place of beginning.

Bearings record true course.

W. J. WILLIAMS, Transitman.

CLAYTON WILLIAMS, } Chain Carriers.
TOM MCGEE.

I, W. D. TWICHELL, State Surveyor, do hereby certify that the foregoing re-survey is correct and that it was made by me in the field, in accordance with law, and that the limits, boundaries and corners with the marks, natural and artificial, are truly and correctly described in the foregoing plat and field notes.

Re-surveyed 10 day of August, 1909.

APPROVED:

W. D. Twichell
State Surveyor.

Commissioner General Land Office.

File No.

County.

Corrected Field Notes

Survey No.

Filed

190

Commissioner.

File Clerk.

Commissioner General Land Office.

APPROVED:

Re-surveyed 10 day of August, 1903.

I, W. D. TWICHELL, State Surveyor, do hereby certify that the foregoing re-survey is correct and that it was made by me in the field, in accordance with law, and that the limits, boundaries and corners with the marks, natural and artificial, are truly and correctly described in the foregoing plat and field notes.

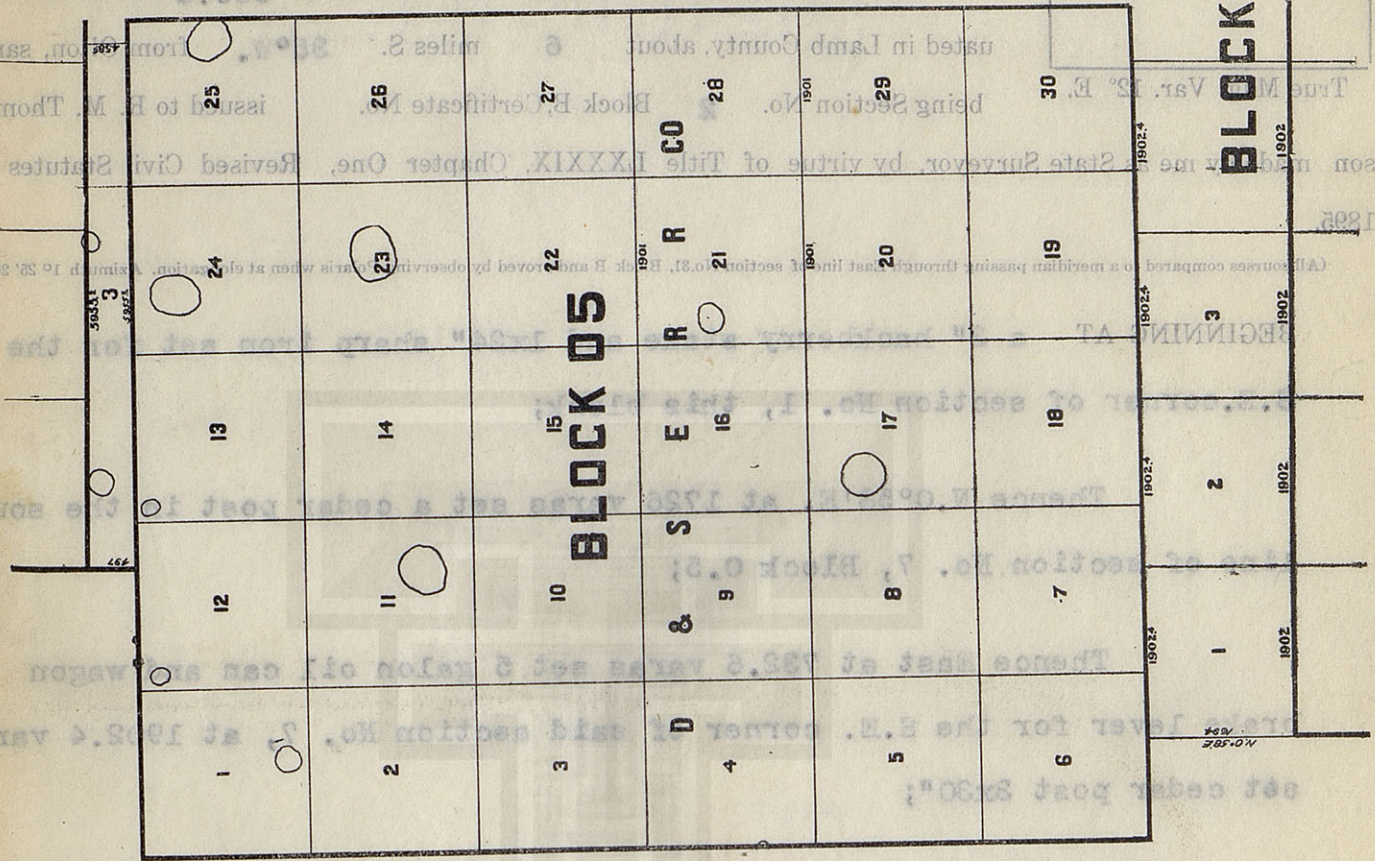
W. J. WILLIAMS, Transitman.

Bearings record true course.

Surveyed with Buff Solar Transit No. 6741

Thence N. 89° 21' W. 1902 varies to the place of beginning.

Thence S. 0° 58' W. at 1758 varies set a cedar post 6"x30";



Grantee: R. M. Thompson.

Block No. B.

Survey No.

LAMB COUNTY
THE STATE OF TEXAS

FOR PLAT SEE
OTHER SIDE

THE STATE OF TEXAS

LAMB COUNTY

FOR PLAT SEE
OTHER SIDE

Survey No. 3

Block No. B.

Grantee: R. M. Thompson.

CORRECTED FIELD NOTES of a re-survey of 597.6 acres of land situated in Lamb County, about 5 miles S. 25° W. from Olton, same

being Section No. 3⁸ Block B, Certificate No. issued to R. M. Thompson made by me as State Surveyor, by virtue of Title LXXXIX, Chapter One, Revised Civil Statutes of 1895.

(All courses compared to a meridian passing through East line of section No. 31, Block B and proved by observing Polaris when at elongation. Azimuth $1^{\circ} 25' 20''$.)

BEGINNING AT a cedar post 6"x30" set for the S.E. corner of Section 2, this block;

Thence N. $0^{\circ} 58' E$. at 1758 varas set a cedar post 3"x30" in the south line of section No. 18, Block 0.5;

Thence East at 731.2 varas set plunger coupling and 2 stones for the S.E. corner of said section No. 18, at 1902.4 varas set cedar post 4x24" and 3 pits;

Thence S. $9^{\circ} 58' W$. at 1790 varas set a cedar post 4x36", fence north 1.3 varas;

Thence N. $89^{\circ} 2' W$. 1902 varas to the place of beginning.

Bearings record true course.

W. J. WILLIAMS, Transitman.

CLAYTON WILLIAMS, } Chain Carriers.
TOM MCGEE. }

I, W. D. TWICHELL, State Surveyor, do hereby certify that the foregoing re-survey is correct and that it was made by me in the field, in accordance with law, and that the limits, boundaries and corners with the marks, natural and artificial, are truly and correctly described in the foregoing plat and field notes.

Re-surveyed 10, day of August, 1909.

APPROVED:

W. D. Twichell
State Surveyor.

Commissioner General Land Office.

File No. _____

County.

Corrected Field Notes

Survey No.

Filed

Commissioner.

File Clerk.

Commissioner General Land Office.

APPROVED:

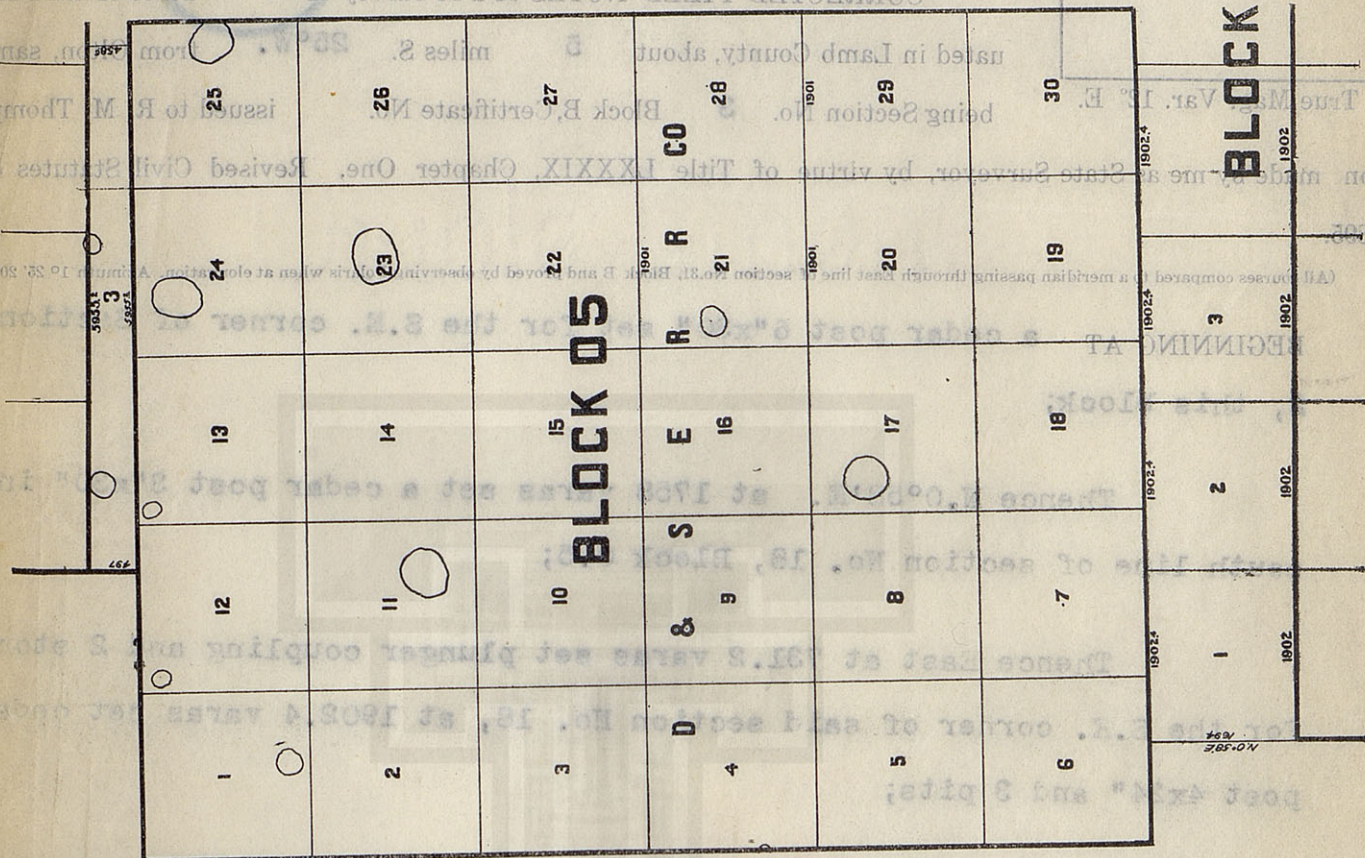
Re-surveyed 10, day of August, 1909.

marks, natural and artificial, are truly and correctly described in the foregoing plat and field notes it was made by me in the field, in accordance with law, and that the limits, boundaries and corners I, W. D. TWICHELL, State Surveyor, do hereby certify as being correctly and truly shown on the foregoing plat and field notes.

W. J. WILLIAMS, Transitionman.

Bearings record true course.

Surveyed with Buff Solar Transit No. 6741



THE STATE OF TEXAS

LAMB COUNTY

FOR PLAT SEE
OTHER SIDE

Survey No. 4

Block No. B.

Grantee: R. M. Thompson.

CORRECTED FIELD NOTES of a re-survey of 608.3 acres of land sit-

uated in Lamb County, about 5 miles S. 15°W. from Olton, same

being Section No. 4 Block B, Certificate No. issued to R. M. Thomp-

son made by me as State Surveyor, by virtue of Title LXXXIX, Chapter One, Revised Civil Statutes of 1895.

(All courses compared to a meridian passing through East line of section No. 31, Block B and proved by observing Polaris when at elongation. Azimuth 1°25' 20".)

BEGINNING AT a cedar post 3x36" set for the S.E. corner of section No. 3, this block, on sand dune;

Thence N. 6°58' E. at 1790 varas set a cedar post 4"x24" and 3 pits;

Thence East at 729.8 varas set 2" angle iron for the S.E. corner of section No. 19, Block 0.5; at 1902.4 varas set cedar post 4"x24" and 3 pits;

Thence S. 0°58' W. at 1822 varas set cedar post 4"x30";

Thence N. 89°2' W. 1902 varas to the place of beginning.

Bearings record true course.

W. J. WILLIAMS, Transitman.

CLAYTON WILLIAMS, } Chain Carriers.
TOM MCGEE.

I, W. D. TWICHELL, State Surveyor, do hereby certify that the foregoing re-survey is correct and that it was made by me in the field, in accordance with law, and that the limits, boundaries and corners with the marks, natural and artificial, are truly and correctly described in the foregoing plat and field notes.

Re-surveyed 10 day of August, 1909.

APPROVED:

W. D. Twichell
State Surveyor.

Commissioner General Land Office.

File No.

County.

Corrected Field Notes

Survey No.

Filed

190

Commissioner.

File Clerk.

Commissioner General Land Office.

APPROVED:

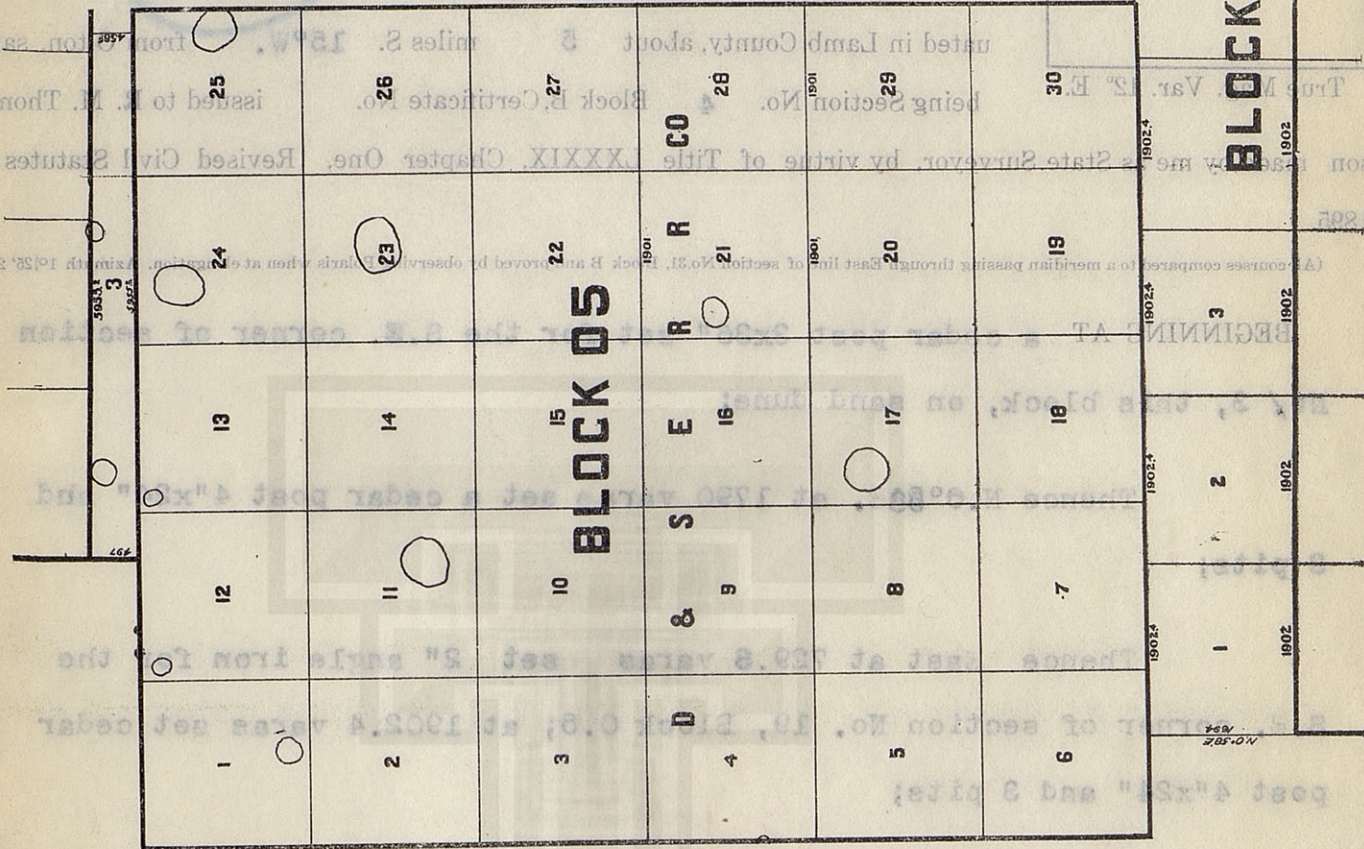
Re-surveyed 10 day of August, 1909.

It was made by me in the field, in accordance with the limits, boundaries and corners with the marks, natural and artificial, are truly and correctly described in the foregoing plat and field notes.

CLAYTON WILLIAMS, Chain Carrier.
TOM MCGEE, State Surveyor.

Surveyed with Buft Solar Transit No. 6741

Besting's record true course.
W. J. WILLIAMS, Transitman.



CORRECTED FIELD NOTES of a re-survey of 603.2 acres of land sit-

Grantee: R. M. Thompson.

Block No. B.

Survey No.

LAMB COUNTY
THE STATE OF TEXAS

FOR PLAT SEE
OTHER SIDE

THE STATE OF TEXAS

LAMB COUNTY

Survey No. 5

Block No. B.

Grantee: R. M. Thompson.

FOR PLAT SEE
OTHER SIDE

CORRECTED FIELD NOTES of a re-survey of 619.1 acres of land sit-

uated in Lamb County, about 5 miles S. 5° W. from Olton, same

being Section No. 5 Block B, Certificate No. issued to R. M. Thomp-

son made by me as State Surveyor, by virtue of Title LXXXIX, Chapter One, Revised Civil Statutes of 1895.

(All courses compared to a meridian passing through East line of section No. 31, Block B and proved by observing Polaris when at elongation. Azimuth $1^{\circ} 25' 20''$.)

BEGINNING AT a cedar post 4"x30" set for the S.E. corner of Section No. 4, this block;

Thence N. $0^{\circ} 58' E$. at 1322 varas set cedar post 4"x24" and 3 pits, in the south line of section No. 30, Block B. 5;

Thence East at 723.4 varas set 2" iron pipe for the S.E. corner of said Section No. 30, at 1902.4 varas set cedar post;

Thence S. $0^{\circ} 58' W$. at 1354 varas set cedar post and 3 pits;

Thence N. $89^{\circ} 2' W$. at 1902 varas the place of beginning.

Surveyed with Bull Solar Transit No. 0741

Bearings record true course.

W. J. WILLIAMS, Transitman.

CLAYTON WILLIAMS, } Chain Carriers.
TOM MCGEE.

I, W. D. TWICHELL, State Surveyor, do hereby certify that the foregoing re-survey is correct and that it was made by me in the field, in accordance with law, and that the limits, boundaries and corners with the marks, natural and artificial, are truly and correctly described in the foregoing plat and field notes.

Re-surveyed 10 day of August, 1909.

APPROVED:

W. D. Twichell
State Surveyor.

Commissioner General Land Office.