



Architecture Planning Interiors Research
175 Toyota Plaza, Suite 600
Memphis, Tennessee 38103
Telephone 901 521 1440
Fax 901 525 2760
E-mail info@ark.com

Client

LOADSTAR, Inc.

9830 Colonnade Boulevard, Suite
600
San Antonio, Texas
78230

Issues and Revisions

No.	Date	Issues
1	06/08/2012	PRICING SET
8	10/15/2012	FOR CONSTRUCTION SET

No.	Date	Revisions
-----	------	-----------

This image shows a single sheet of white paper with horizontal blue or grey ruling lines. The lines are evenly spaced and run across the width of the page. There are approximately 20 lines visible. The paper appears to be a standard notebook page.

©2010 LRK Inc.
Drawings, written material, and design concepts shall not be used or reproduced in whole or part in any form or format without prior written consent of LRK Inc. Do not scale drawings. Use given dimensions only. If not shown, verify correct dimensions with the Architect. Contractor shall check and verify all dimensions and conditions at job site.

Seq



PAPE-DAWSON
ENGINEERS
TPE, FIRM REGISTRATION # 470

555 EAST RAMSEY | SAN ANTONIO, TEXAS 78216 | PHONE: 210.3
FAX: 210.3

Project Number: 7801-13

Project Name: TOWN CENTER AT
LA CANTERA

La Cantera
Phase I
Market Street
San Antonio,
Texas

Drawing Name:

DIMENSIONAL CONTROL AND PAVING PLAN

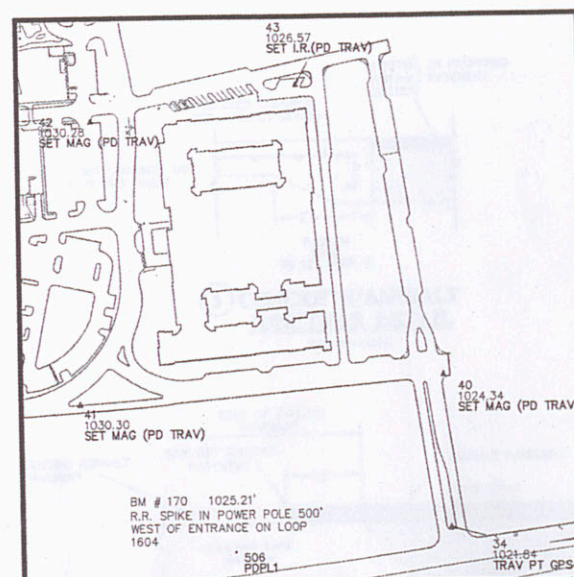
Drawn By: AA/CS/JG/DS

Checked By: WK / RLS

C400



1. ALL CURBS SHALL BE 6" STANDARD CURE UNLESS OTHERWISE NOTED (REFERENCE PAYMENT AND CURB DETAIL SHEET).
2. ALL DIMENSIONS MUST BE VERIFIED ON THE JOB AND THE ENGINEER MUST BE NOTIFIED OF ANY DISCREPANCIES BEFORE PROCEEDING WITH THE WORK.
3. COORDINATE CONTROL FOR PARKING DRIVEWAYS, AND ISLANDS ARE AS SHOWN. NO OFFSETS FROM FACE OF CURB ARE GIVEN.
4. CONTRACTOR SHALL IMMEDIATELY NOTIFY THE ENGINEER OF ANY QUESTIONS THAT MAY ARISE CONCERNING THE EXISTING CONDITIONS OR LIMITS OF DIMENSIONS NECESSARY FOR CONSTRUCTION OF THIS PROJECT.
5. THE CONTRACTOR SHALL BE RESPONSIBLE FOR ESTABLISHING ALL HORIZONTAL CONTROL PER THE CONSTRUCTION DRAINAGES (i.e., NO CONSTRUCTION STAKING WILL BE PROVIDED UNDER THIS CONTRACT).
6. THE CONTRACTOR SHALL BE RESPONSIBLE FOR ACQUIRING ALL NECESSARY PERMITS AND OBTAINING CONSTRUCTION.
7. ALL STREET AND PARKING DIMENSIONS SHOWN ARE FROM FACE OF CURB TO FACE OF CURB. ALL COORDINATES SHOWN ALONG CURB LINE ARE AT FACE OF CURB.
8. REFERENCE LANDSCAPE ARCHITECT PLANS FOR ADDITIONAL DIMENSIONAL CONTROL AND SIDEWALK LAYOUT.
9. CONTRACTOR SHALL BE RESPONSIBLE FOR RESTORING TO ITS ORIGINAL OR BETTER CONDITION ANY DAMAGE DONE TO EXISTING UTILITIES, FENCES, PAVEMENT, CURBS DRIVEWAYS, OR SIDEWALKS.
10. THE CONTRACTOR SHALL SAW CUT EXISTING PAVEMENT, CURBS AND SIDEWALKS AT NEW PAVEMENT, CURB AND SIDEWALK JUNCTURES. NO JAGGED OR IRREGULAR CUTS WILL BE ACCEPTED.
11. REFER TO PROJECT SPECIFICATIONS FOR ADDITIONAL SPECIFICATIONS AND CONTRACT INFORMATION.



BENCHMARK AND TRAVERSE POINT LOCATIONS
SCALE: 1" = 200'

SCALE: 1" = 200'