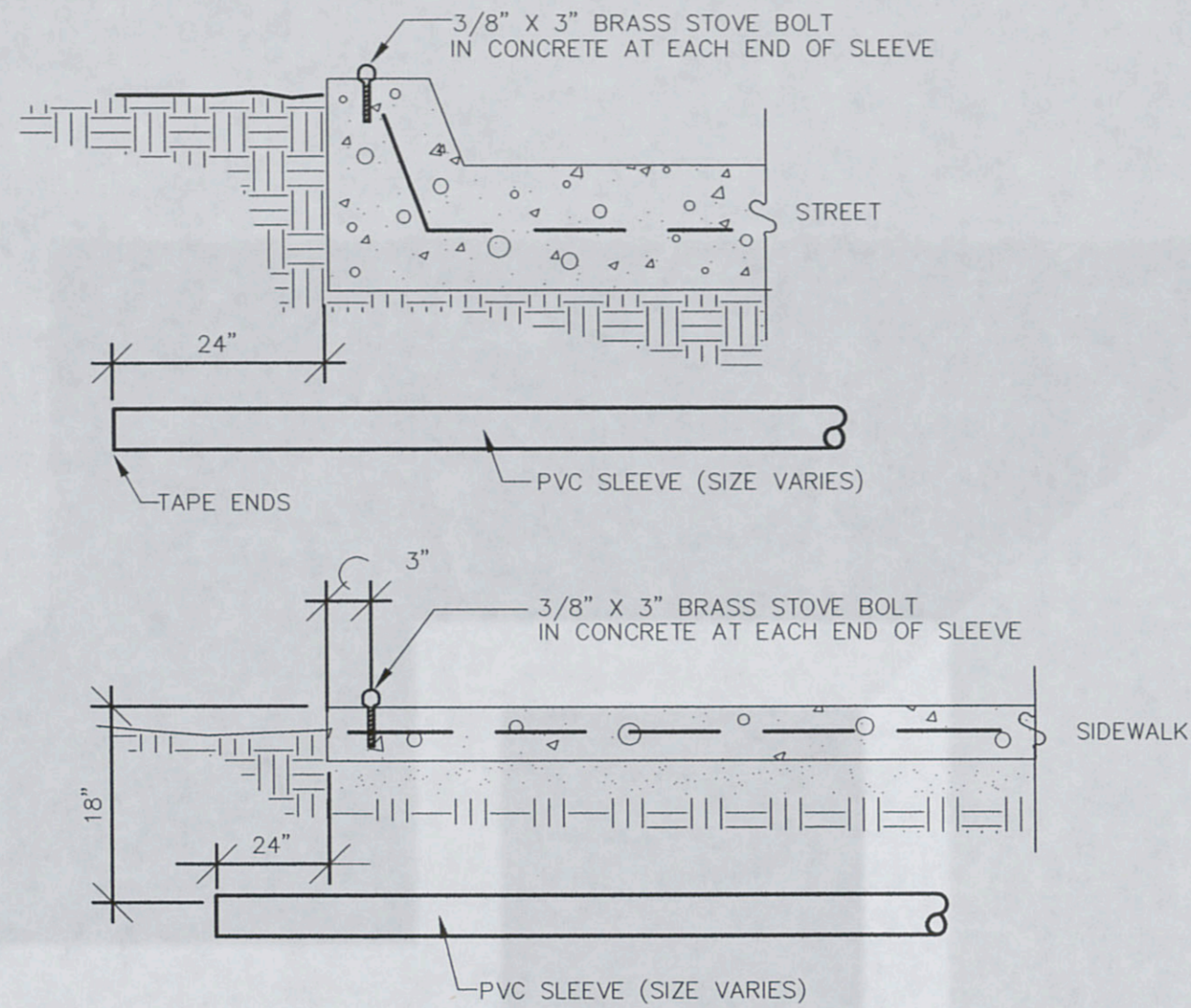
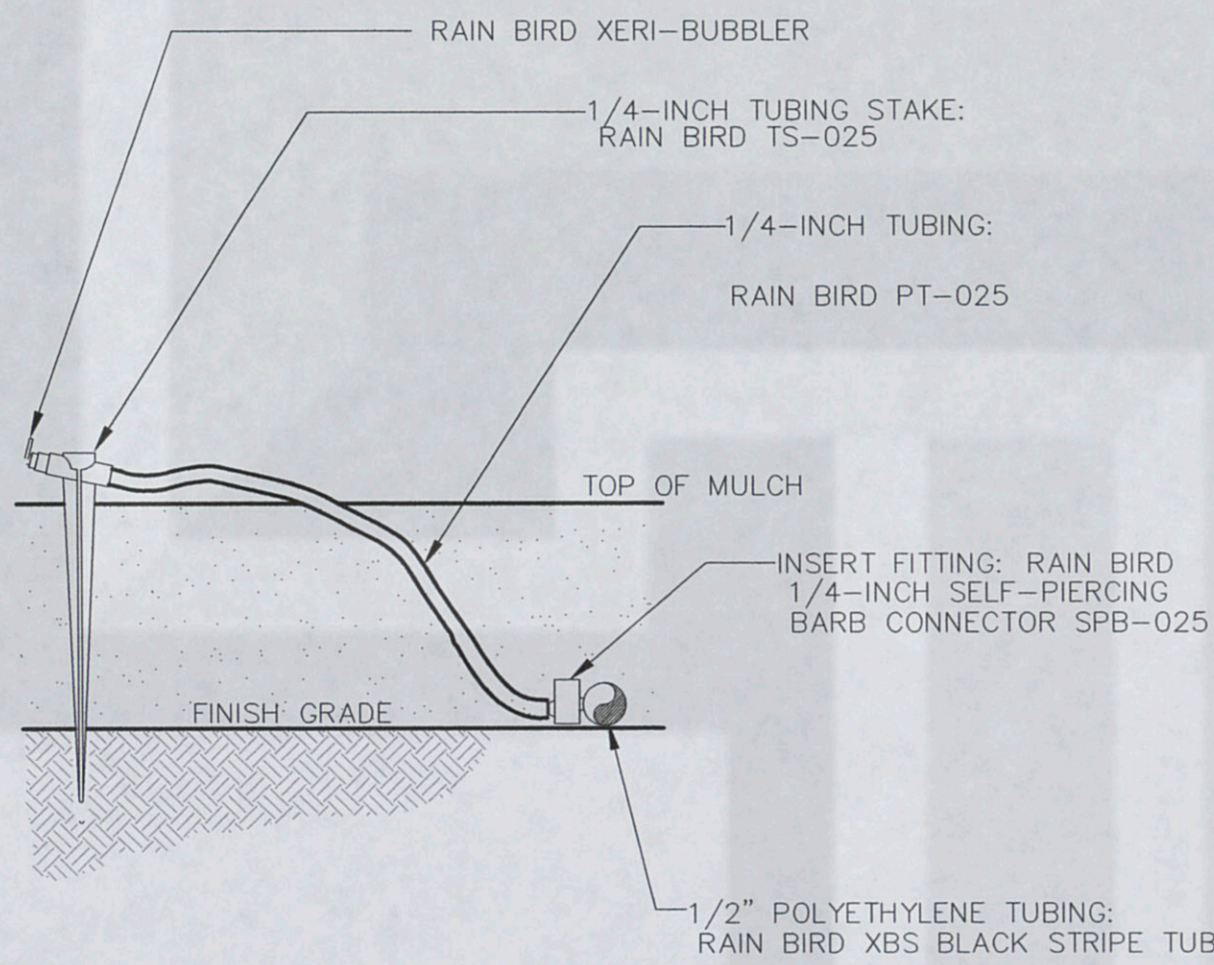


General Irrigation Notes:

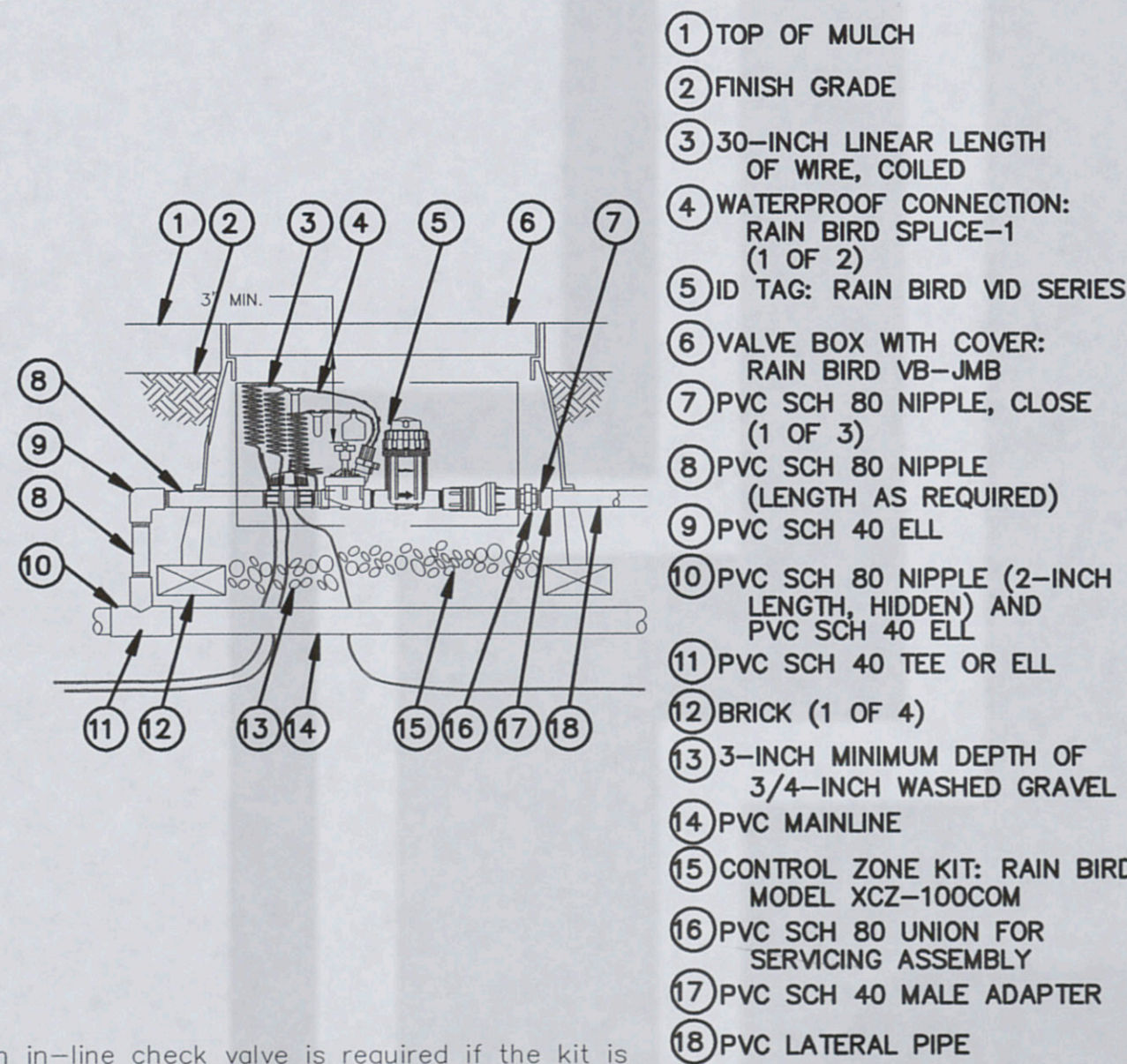
1. Notify Irrigator/Landscape Architect immediately if any design design assumptions are not attainable.
2. All heads and valve boxes are to be black in color, with purple "non-potable" covers, unless otherwise noted.
3. Sprinkler layout is diagrammatic. Adjustments to head and line locations should be made, with approval of Irrigator, to accommodate existing job conditions. Do not route pipe down the center of any bed area, install directly behind curb where possible. Combine pipes in same trench wherever possible – see trench detail.
4. All sprinkler heads are to be set perpendicular to finished grade, unless otherwise noted, and are to be spaced head-to-head per manufacturer's recommendation and adjusted per prevailing winds.
5. Avoid existing and proposed tree roots/balls when trenching. In shrub beds, bury line deep enough to accommodate shrub root balls.
6. Irrigation contractor shall flush and adjust all sprinklers and valves for optimum coverage with minimal overspray onto walks, streets, and other hardscape items.
7. Irrigation contractor shall not willfully install the irrigation system as shown when it is obvious in the field that obstructions, grade differences, or differences in dimensions exist that might not have been brought to the attention of Irrigator/Landscape Architect. In the event that notification is not performed, irrigation contractor shall resume full responsibility for any/all necessary revisions.
8. Irrigation contractor shall procure all permits and licenses, pay all fees/charges, and give required notification necessary for work completion.
9. Extreme care should be exercised in excavating and working near existing utilities. Contractor shall verify the location and condition of all utilities and be responsible for damage to any utilities. Reference Landscape Plans.
10. Irrigation contractor shall clearly mark all exposed excavations, materials, and equipment.
11. Irrigation contractor shall verify minimum operation pressure of 80 PSI at irrigation meter tap. Notify Irrigator immediately if anticipated pressure is not available. Pressure regulating components shall be provided where pressure exceeds manufacturer's recommended operating pressure.
12. All control wire shall be direct burial 600 volt single conductor solid copper, plastic insulated cable rated ULUF. Spare wires shall be installed from the controller to locations shown on plan.
 - a. Station Wire – any color except green or orange
 - b. Common Wire – Green
 - c. Extra wires – Orange
13. All backflow devices must be certified prior to project acceptance.
14. Adjustable flow controls shall be provided on all circuit remote valves, unless otherwise noted.
15. Check valves should be provided in all areas where elevation changes result in low head drainage. Check valves can either be independent or within specified equipment.
16. Reference Manufacturer Specifications for all products listed on this Irrigation plan & perform all work per manufacturer's recommendations.
17. Irrigation in Texas is regulated by the Texas Commission on Environmental Quality, PO BOX 13087, Austin, TX. 78711-3087.



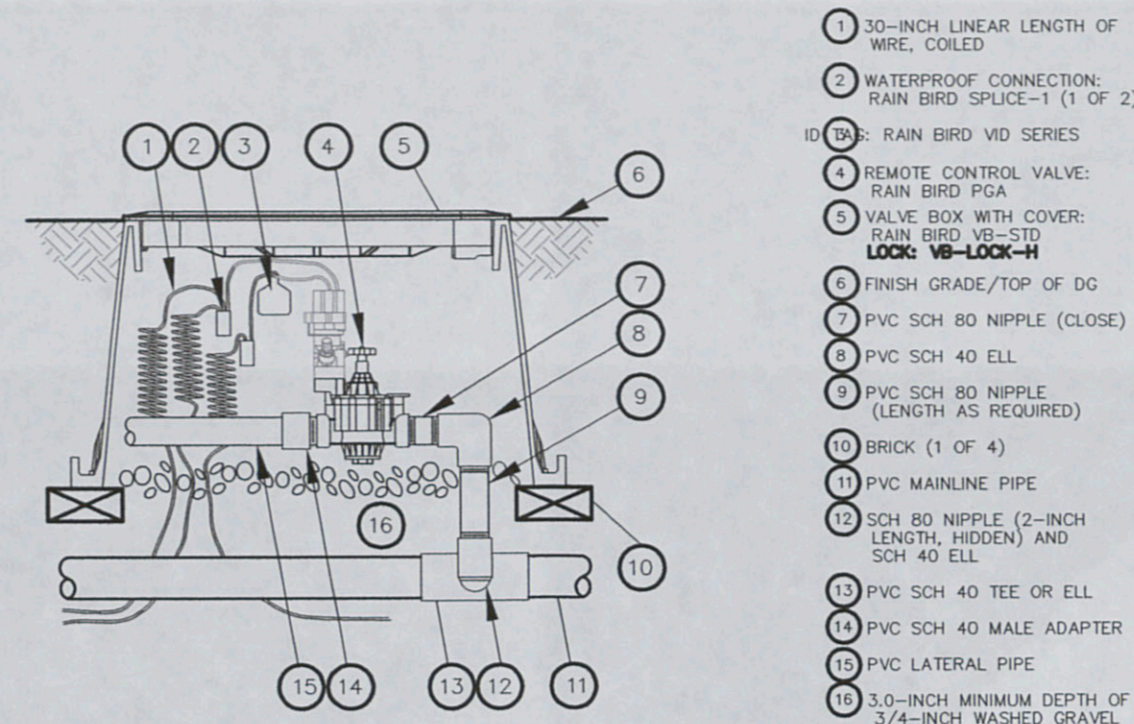
1 TYP. SLEEVING
N.T.S.



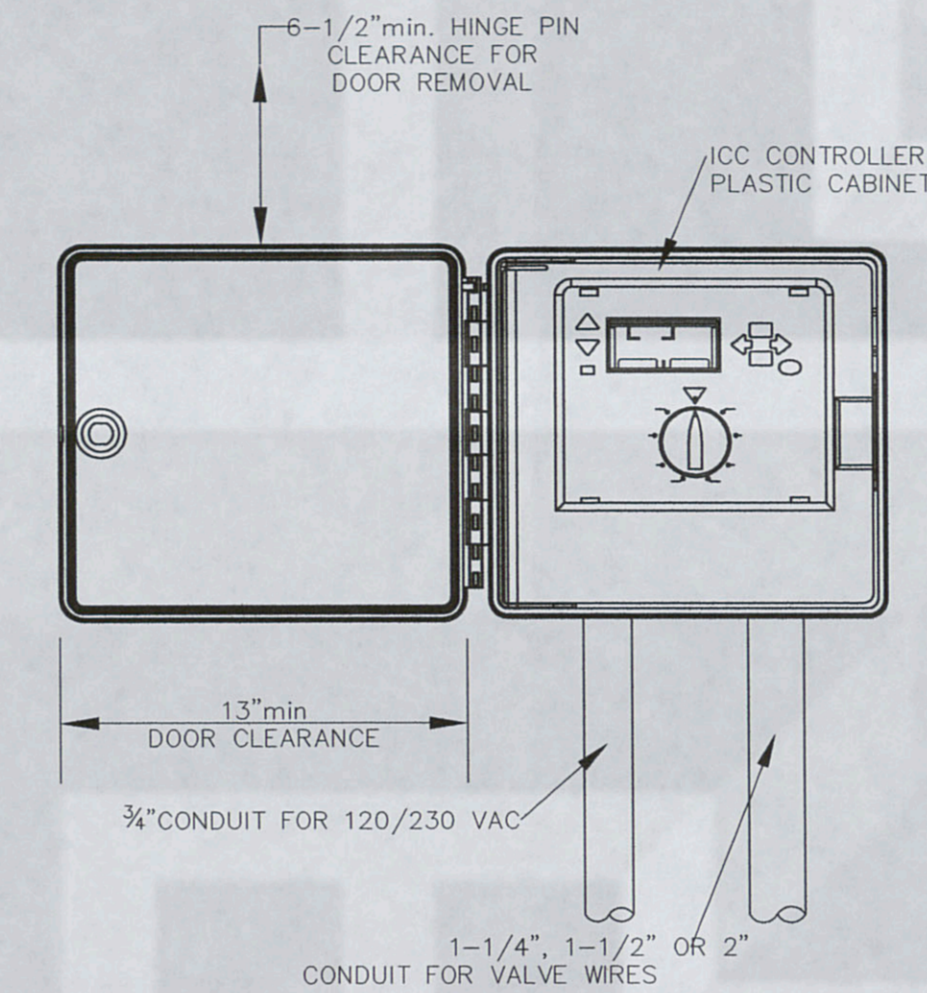
2 TYP. XERI-BUG EMITTER
N.T.S.



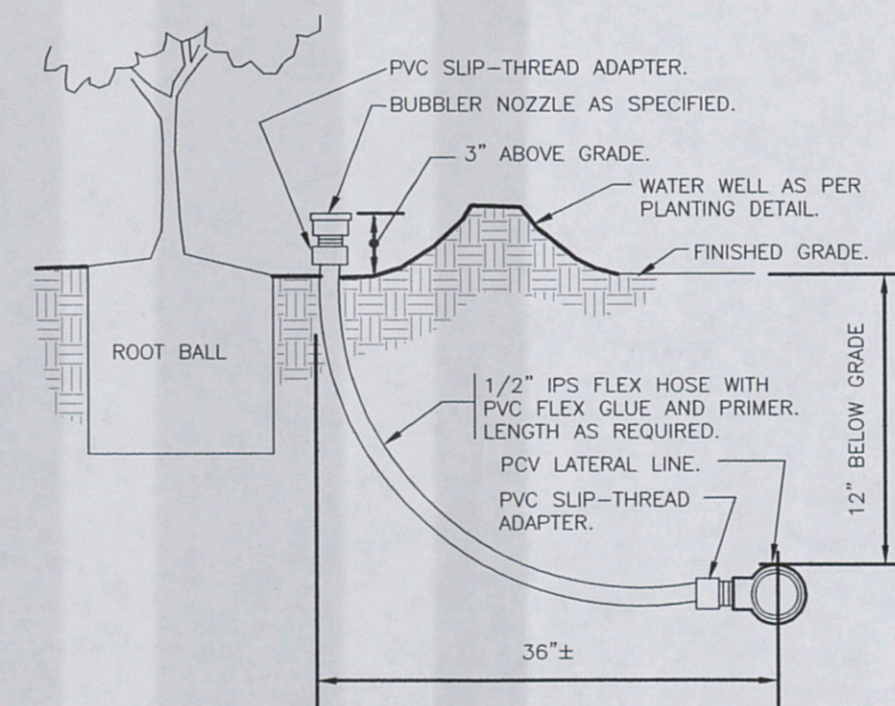
3 MEDIUM FLOW CONTROL ZONE KIT
N.T.S.



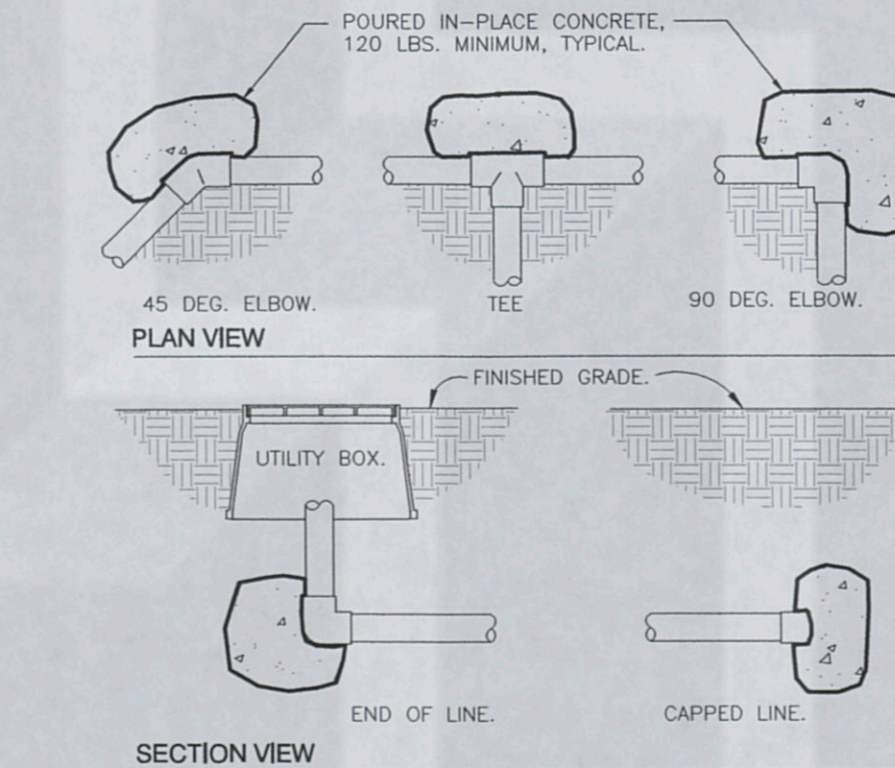
4 RAIN BIRD PGA SERIES VALVE
N.T.S.



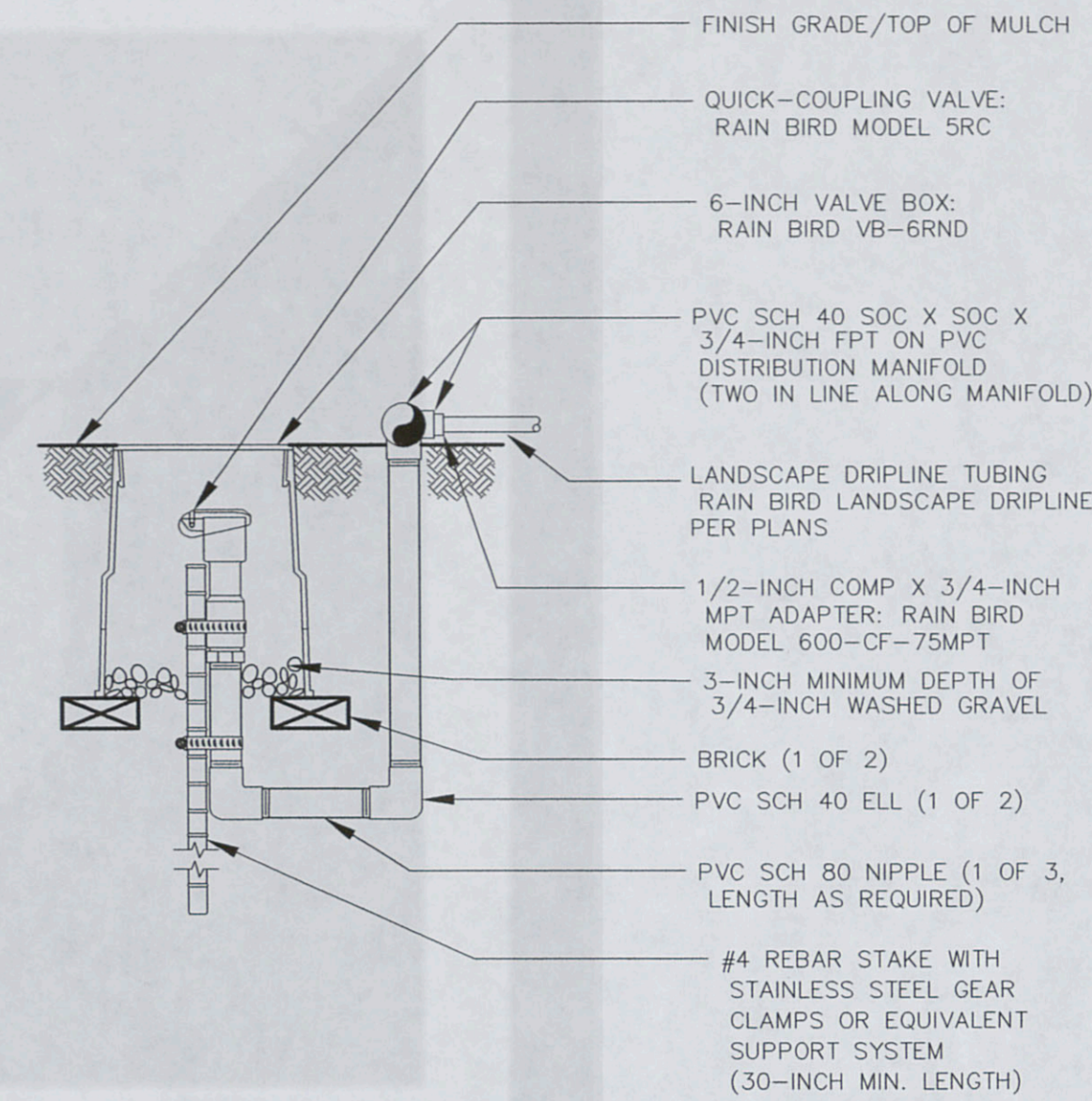
5 HUNTER ICC-PL CONTROLLER
N.T.S.



6 BUBBLER ON FLEX HOSE RISER
N.T.S.



7 THRUST BLOCKING
N.T.S.



NOTES:
1. FURNISH FITTINGS AND PIPING NOMINALLY SIZED IDENTICAL TO NOMINAL QUICK COUPLING VALVE INLET SIZE.

8 TYP. DRIPLINE FLUSHLINE
section - N.T.S.

FIRST BAPTIST CHURCH MINISTRY CENTER
811 TRINITY STREET
CITY OF AUSTIN LICENSE AGREEMENT
IRRIGATION DETAILS

J. Robert Anderson, P.E.
J. Robert Anderson & Associates, Inc.
CONSULTING ENGINEERS
1808 WEST 34TH
SUITE 100
AUSTIN, TEXAS 78703
512.474-5004 FAX 512.744-1173
P-Q JOB NO.: 5050195

J. Robert Anderson, P.E.
J. Robert Anderson & Associates, Inc.
CONSULTING ENGINEERS
1808 WEST 34TH
SUITE 100
AUSTIN, TEXAS 78703
512.474-5004 FAX 512.744-1173
P-Q JOB NO.: 5050195



CHK. BY: DFR
DRWN. BY: DFR
DATE: JAN 16, 2008

DRAWING NO.
SHEET NO.

L 1.3