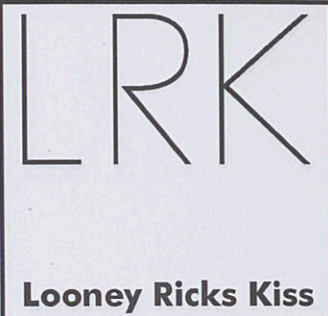
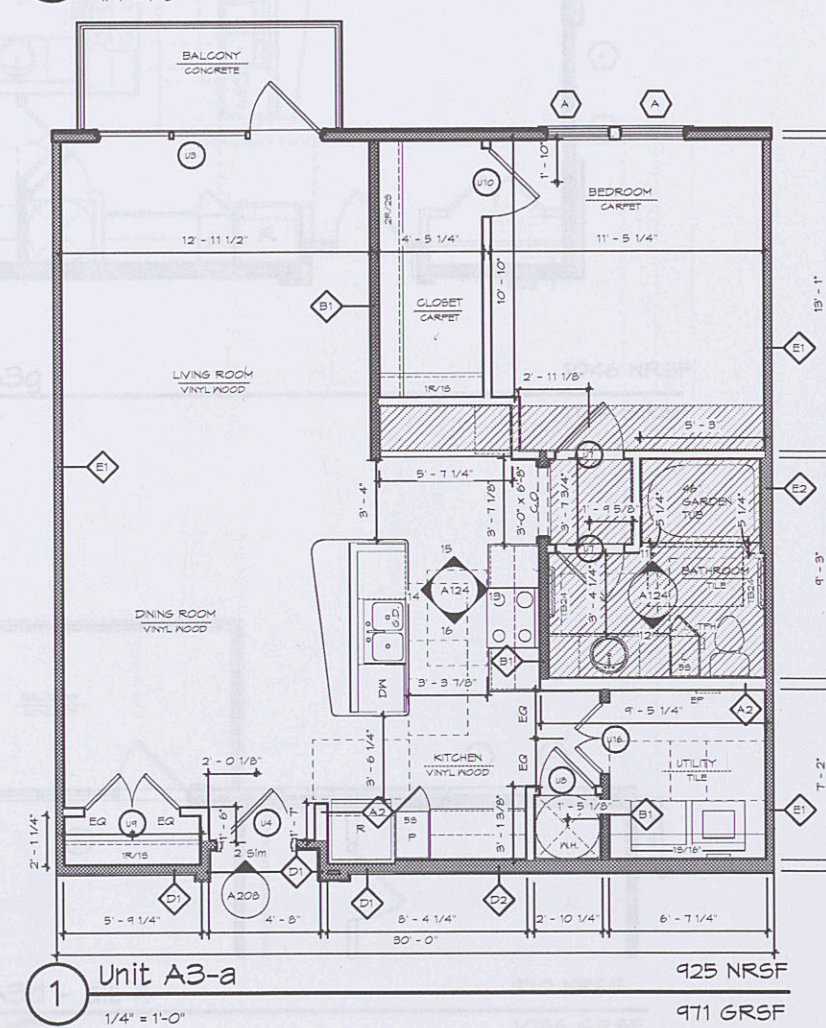
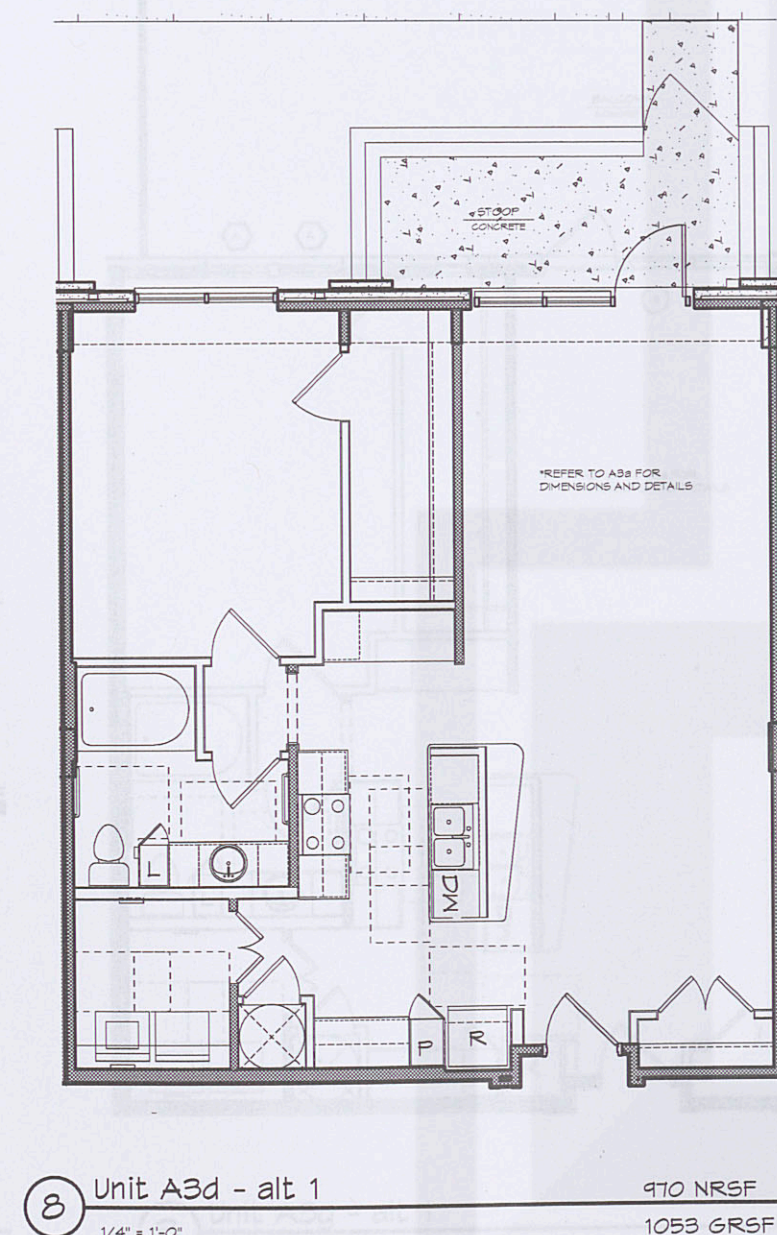
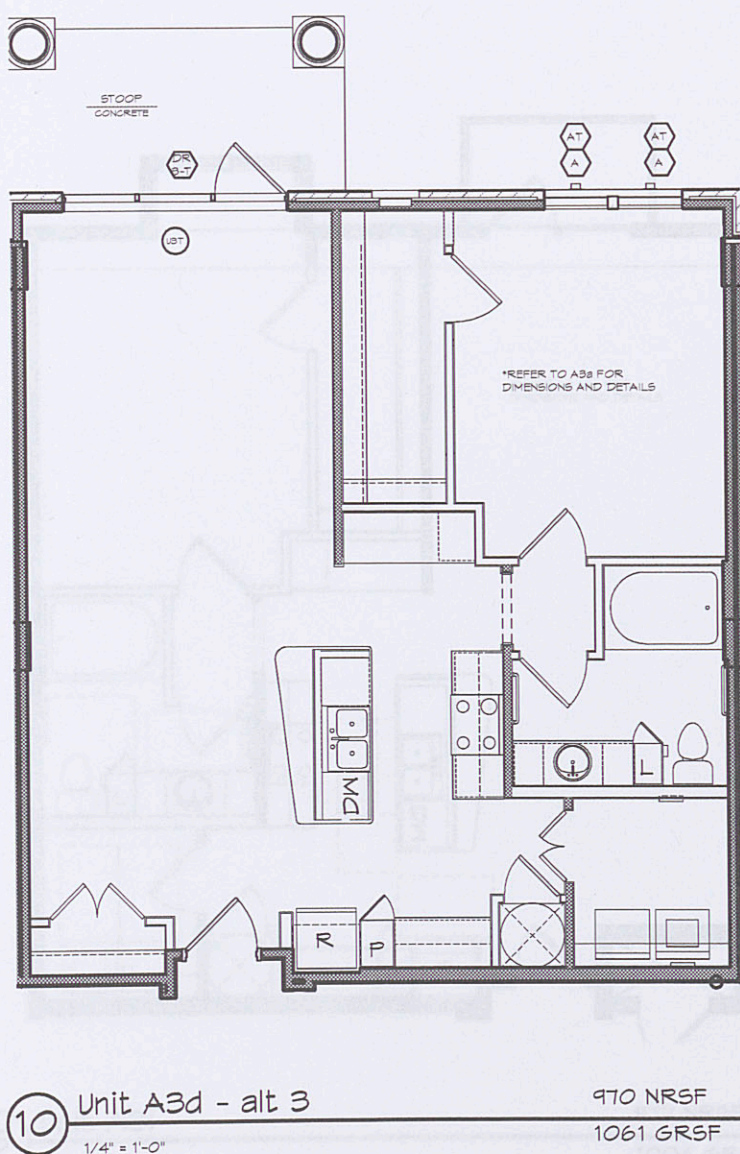
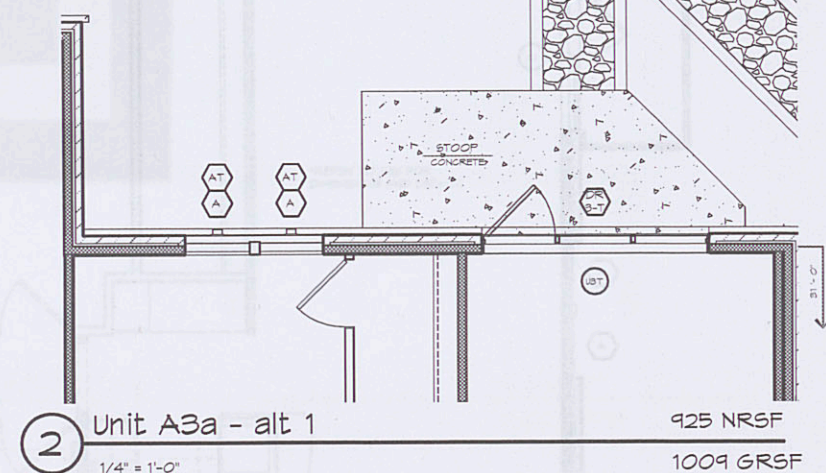
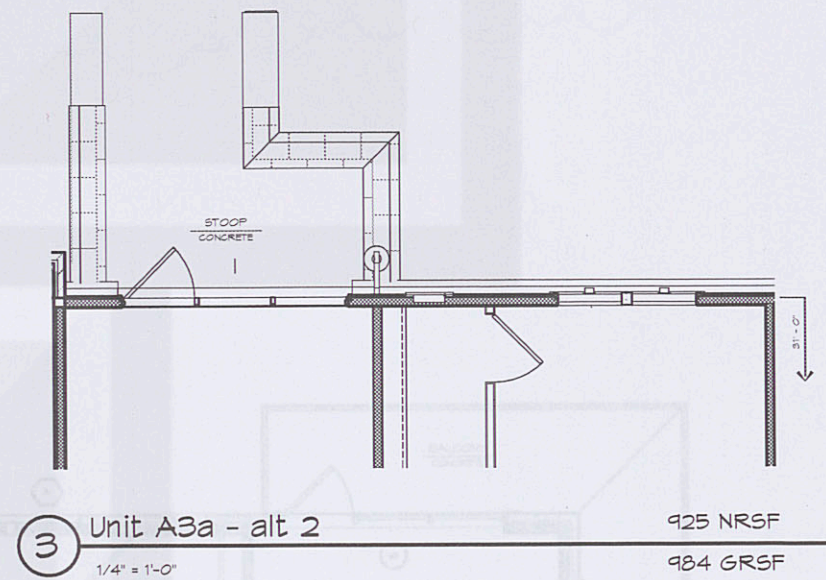
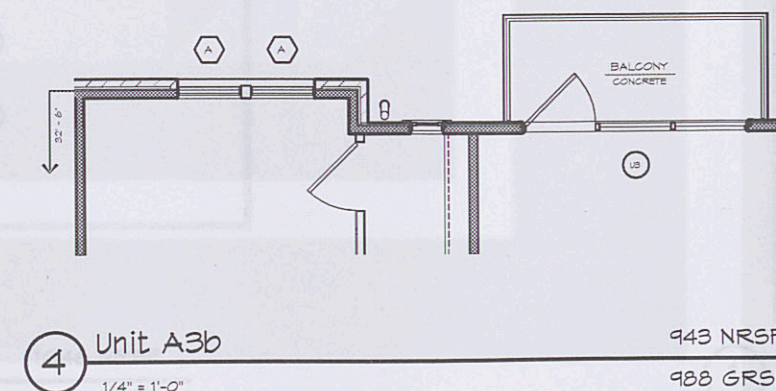
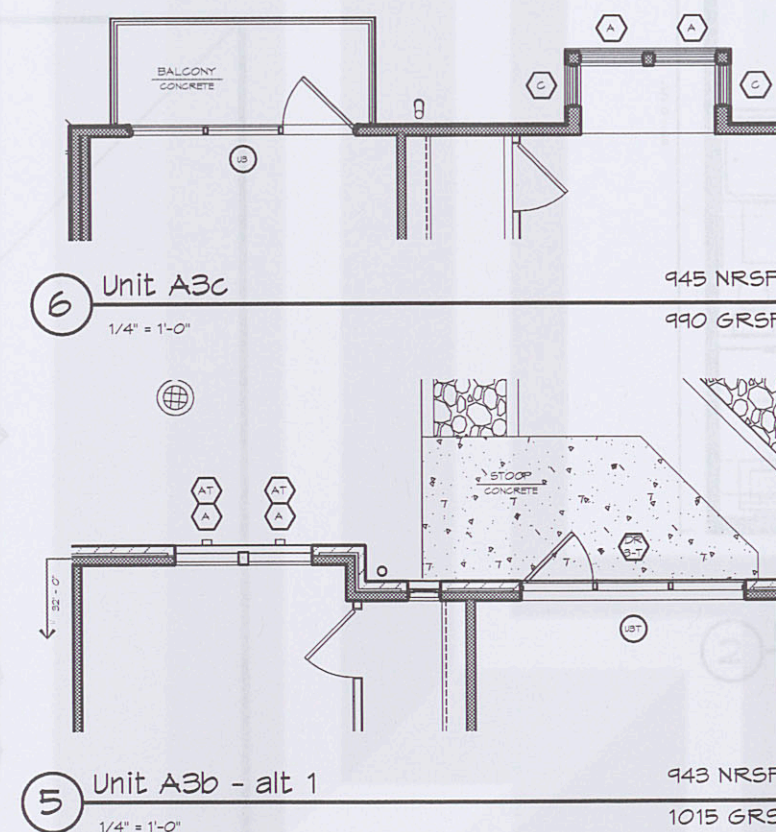
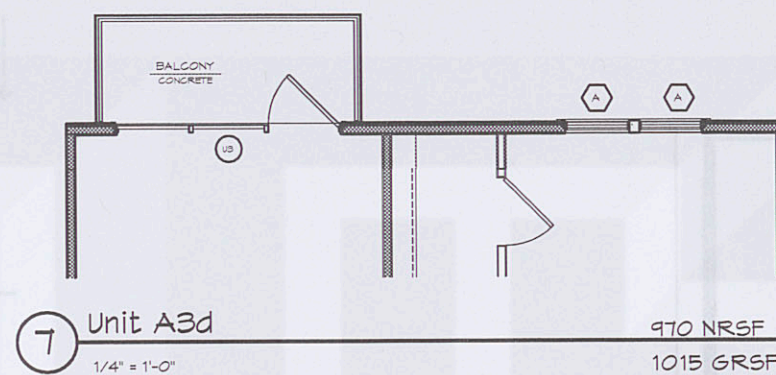
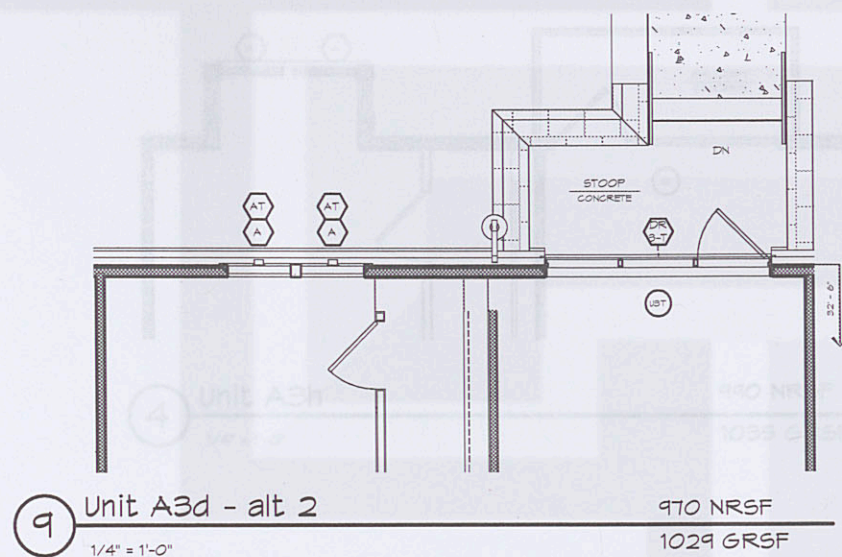
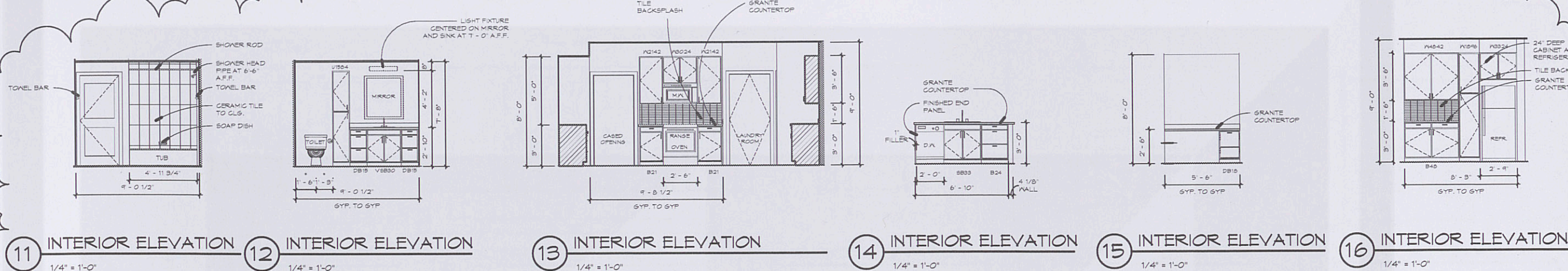


UNIT NOTES

1. ALL DIMENSIONS ON UNIT PLANS ARE TO OUTSIDE FACE OF STUD OR CMU UNLESS NOTED OTHERWISE. STUDS NOT DIMENSIONED ARE 3 1/2" WOOD STUDS TYPICAL UNLESS NOTED OTHERWISE.
2. ALL DIMENSIONS ARE BASED ON 5/8" GYP/UM BOARD AT ALL INTERIOR BEARING AND NON-BEARING PARTITIONS.
3. KITCHEN BASE CABINETS ARE 24" DEEP AND BATH BASE CABINETS ARE 21" DEEP, TYP.
4. CLOSET SHELVES ARE MDF SHELVES 1/2" INTERVAL. ROD IS ONE SHELF MOUNTED AT 64" AFF. 25 IS TWO SHELVES AT 42" AND 54" AFF. 55 IS FIVE SHELVES AT 24", 40", 56", 72", AND 88" AFF. SHELVES AT UTILITY CLOSETS ARE MDF SHELVES. 25/18 IS TWO SHELVES, 18-WIDE, MOUNTED AT 60" AND 84" AFF. 55/18 IS A VERTICAL SHOE RACK BENEATH A SHELF.
5. SHELVES AT PANTRY AND LINEN CLOSETS ARE MDF SHELVES. 55/18 IS FIVE SHELVES, 18-WIDE, MOUNTED AT 24", 40", 56", 72", AND 88" AFF.
6. VERIFY EXACT DIMENSIONS REQUIRED TO INSTALL HVAC AND WATER HEATING EQUIPMENT WITH MANUFACTURER BEFORE BUILDING ENCLOSURE WALLS AND FLOOR DOWNS.
7. VERIFY FRAMING OPENING DIMENSIONS SHOWN FOR TUBS AND SHOWERS WITH ACTUAL TUB AND SHOWER SUPPLIER, ADJUST AS REQUIRED.
8. GEMENTIOUS BACKER BOARD SHALL BE USED AT ALL TUB/SOWER AREAS. MOISTURE RESISTANT GYP/UM BOARD WILL NOT BE ACCEPTED AT THESE LOCATIONS.
9. ALL INTERIOR UNIT WALLS AND CEILINGS ARE PAINTED 1" GYP/UM BOARD UNLESS NOTED OTHERWISE.
10. ALL INTERIOR UNIT WALLS TO HAVE PAINTED MOOD BASE TRIM INCLUDING MECHANICAL, UTILITY, AND CLOSET CLOSETS.
11. UNLESS NOTED OTHERWISE, ALL CEILING HEIGHTS APPROX. 9'-0" UNLESS NOTED OTHERWISE.
12. UNLESS NOTED OTHERWISE, SHADY AREA INDICATES THE LOCATION OF PURR-DOWNS AT T-8" TYPICAL.
13. REFER TO PROJECT DATA SHEET FOR PROJECT SQUARE FOOTAGE INFORMATION.
14. FOR WALL TYPES REFER TO SHEETS 2009-2009.
15. ALL WORK AND CONSTRUCTION SHALL MEET OR EXCEED ALL APPLICABLE CODES.
16. MOUNTING HEIGHT FOR TONEL BAR INSIDE SHOWER IS 5'-0" AFF.
17. MOUNTING HEIGHT FOR TONEL BAR INSIDE SHOWER AND NOT ABOVE TOILET, IS 4'-0" AFF. MOUNTING HEIGHT FOR T.P.H. IS 10' AFF.
18. ALL INTERIOR ELEVATIONS ARE DRAWN ASSUMING FINISH FACE OF GYP/UM BOARD U.N.O.
19. PROVIDE FINISH PANELS AT ALL EXPOSED END CONDITIONS OF CABINETS AND WHERE DISHWASHER DOES NOT HAVE AN ADJACENT CABINET.
20. PROVIDE DOORS TO ACCOMMODATE 42" UPPER CABINETS AT KITCHEN.
21. INSULATE ALL PLUMBING RISERS IN WALL WITH BATT INSULATION.
22. FOR ACCESSIBILITY REQUIREMENTS REGARDING ACCESSIBLE ROUTES AND PROTRUDING ELEMENTS, REFER TO A120 AND ANSI 111.1.2004 FOR MORE INFORMATION.
23. FOR ACCESSIBILITY REQUIREMENTS REGARDING USABLE AND ACCESSIBLE DOORWAYS, REFER TO A120 AND ANSI 111.1.2004 FOR MORE INFORMATION.
24. FOR ACCESSIBILITY REQUIREMENTS REGARDING THRESHOLDS, REFER TO A120 AND ANSI 111.1.2004 FOR MORE INFORMATION.
25. FOR ACCESSIBILITY REQUIREMENTS REGARDING THE PRIMARY AND SECONDARY ENTRANCE DOORS, REFER TO A120 AND ANSI 111.1.2004 FOR MORE INFORMATION.
26. FOR ACCESSIBILITY REQUIREMENTS REGARDING SWITCHES, OUTLETS AND CONTROLS, REFER TO A120 AND ANSI 111.1.2004 FOR MORE INFORMATION.
27. FOR ACCESSIBILITY REQUIREMENTS REGARDING REINFORCING AROUND TOILETS, TUBS AND SHOWERS, REFER TO A120 AND ANSI 111.1.2004 FOR MORE INFORMATION.
28. FOR ACCESSIBILITY REQUIREMENTS REGARDING TYPE A TYPE B BATHROOMS, AND POWDER ROOMS, REFER TO A120 AND ANSI 111.1.2004 FOR MORE INFORMATION.
29. FOR ACCESSIBILITY REQUIREMENTS REGARDING MANEUVERING AND CLEAR FLOOR SPACES, REFER TO A120 AND ANSI 111.1.2004 FOR MORE INFORMATION.
30. FOR ACCESSIBILITY REQUIREMENTS REGARDING CLEARANCE AT BATHROOM FIXTURES, REFER TO A120 AND ANSI 111.1.2004 FOR MORE INFORMATION.
31. FOR ACCESSIBILITY REQUIREMENTS REGARDING CLEARANCE AT KITCHEN AREAS, REFER TO A120 AND ANSI 111.1.2004 FOR MORE INFORMATION.
32. MOUNTING ELEVATION FOR P.O.D. DOGS STATION IS 3'-6" AFF.



Architecture Planning Interiors Research
175 Toyota Plaza, Suite 600
Memphis, Tennessee 38103
Telephone 901.521.1440
Fax 901.525.2760
E-mail info@lrk.com

Client:

LOADSTAR, Inc.

9830 Colonnade Boulevard, Suite 600
San Antonio, Texas 78230

Issues

Date	Issues
12.16.11	50% Design Development
01.27.12	Design Development
04.03.12	50% CD
06.08.12	PRICING SET
07.11.12	PERMIT SET

No.

Date

Revisions

07/11/12 Addendum One

10/15/12 For Construction Set

©2012 LRK Inc.
Drawings, written material, and design concepts shall not be used or reproduced in whole or part in any form or format without prior written consent of LRK Inc. Do not scale drawings. Use given dimensions only. If not shown, verify correct dimensions with the Architect. Contractor shall check and verify all dimensions and conditions at job site.

Seal



Project Number: 01.11073.00

Project Name:

Lo Cantera Mixed Use

6215 Via Lo Cantera
San Antonio, Texas 78256

Drawing Name:

Unit A3

Drawn By: BD, MF, DS

Checked By: BD, BE

A124