

# American agriculture News

Communication Link of Rural America

Volume 3 Issue 11

April 22, 1980

8 Pages

Iredell, Texas 76649

Price 35c

## Should the Tractors Roll Again?

by Micki Nellis

Spontaneous tractorcades are rising up in the country again. Tractorcades in both Kansas and Nebraska recently are a sign of mounting unrest and desperation.

Despite American Agriculture's gains, despite the pats on the back and the acceptance into the system, despite "good progress" on Capitol Hill, despite all the little victories, farmers are still being closed out, driven into bankruptcy, and rural America is being slowly clubbed to death.

Imports still strangle us. High interest rates bleed us. A grain embargo has knocked farmers to their knees. Even though the embargo is leaking like a sieve, USDA officials say "Who cares? We said they wouldn't get grain from us, and they're not."

Even though it is an election year and candidates need the farm vote, they have not promised much. Legislation still lags in Washington.

The Department of Energy and the USDA, as well as President Carter, have endorsed fuel alcohol, but the promised incentives are still elusive, giving ample time for big corporations to jump in and take control of what should be another source of farm income.

The farmer's buying power is down and losing further. Sale bills are the order of the day. Small businesses and small banks are being squeezed tighter.

It is cold comfort to say "We told you so two years ago." More and more people are coming around to AAM's way of thinking, but what has it wrought us?

Is it time to do something more than lobby in Washington? Is it time to get the tractors rolling in the streets again? This is a question, not a suggestion. This newspaper and the National AAM office in D.C. would like to hear the feelings of farmers out in the country.

## Toxic Pesticides Found on Mexican Tomatoes

Mexican winter tomatoes bound for US markets have been found to contain residues of a highly toxic German pesticide, Celathion.

The Los Angeles Times has reported that Celathion has been used illegally on tomatoes and some cucumbers near Culiacan, Mexico for at least seven years by several major growers.

The pesticide was identified for the first time only about a month ago by lab tests at the border.

The border was closed to three major growers, but the FDA says the chemical residue does not pose an "imminent health hazard to the consumer."



Do conditions on the farms of America mandate that the tractors roll again? Opinions are invited.

## Kansans Tractorcade

Tractors rolled again at Great Bend, Kansas for the State AAM meeting April 12. About 25 tractors, plus many pickups loaded with hay and grain and many AAM caps and jackets combined to form a good old fashioned tractorcade.

Earl Henry held a press conference saying that the tractorcade was to dramatize the unrest in rural America and warn of impending disaster that faces our economic system. He described Carter's program as 20-20-20-20, meaning 20 percent inflation, 20 percent interest, farm costs up 20 percent and farm income down 20 percent.

About 300 showed up for the afternoon meeting and it

had to be moved to larger quarters.

Resolutions passed included a call for a cooperative effort to withhold grain from the market; that farmers obtain Warehouse receipts and CCC loans on all 1980 production and hold that grain off the market to be released through organized marketing efforts; that 25% of tillable land be set aside; that AAM coordinate with other state and national agriculture groups to find common ground for improvement in the agriculture economy.

Machinery dealers and bankers who went to D.C. with AAM spoke at the meeting.

## Ag Economists Are Educable

Dr. Luther Tweeten (you remember him from the Farm Summit at College Station, Texas over a year ago) said at an Agricultural Policy meeting at Oklahoma State University that agriculture is being deprived of normal profits because of our under achieving national economy. He said he is pessimistic about the profitability of agriculture over the next two or three years, but in the long run very optimistic.

Tweeten's remarks indicated that the US has a lot to lose and nothing to gain by having a system of super farms.



## American Agriculture News

(USPS 419550)

P.O. Box 100, Iredell, TX 76649 817-364-2474  
Published Tuesday Weekly Except Between  
Christmas and New Year in Iredell, Texas  
Subscription Rate \$12 Everywhere  
Co-Editors and Co-Publishers ... Alden and Micki Nellis  
Second Class Postage Paid at Iredell, Texas 76649

POSTMASTER: Send address change to:  
American Agriculture News, PO Box 100, Iredell, TX 76649

The American Agriculture News is the only officially endorsed  
National Newspaper of the American Agriculture Movement

## Washington Pulse

There will be an Executive Committee meeting April 22 in Washington D.C. Please plan to attend. There is lots of business to attend to.

David Senter, National AAM coordinator, was to attend a meeting of the Carnegie Endowment group April 16. Invited were bankers, grain company officials, diplomats and journalists, agriculture organization spokesmen and analysts. The meeting was to be informal and off the record, held in New York City at Rockefeller Plaza.

Senator Dole says the Carter administration lobbied strongly to block a 1980 feed grain and wheat land diversion bill from coming up on the Senate Floor.

Public comments on the Resources Conservation Act were discussed by members of the House Ag Committee and the USDA. Tom Foley, chairman of the House Ag Committee, and Kika de la Garza, vice chairman, said "We have been deeply disturbed because it appears that as a result of widespread misunderstanding of the purpose of the review, some farmers have been given the impression that the Department will seriously consider asking Congress to adopt coercive policies - programs under which Farmers might be threatened with loss of Federal price supports or other farm program benefits if they failed to comply with conservation rules."

Foley continued "I have asked ASCS for assurances that such unprofessional conduct will not be repeated, and I have asked Washington officials of the agency to make sure this is clearly understood by their area directors and field offices. These assurances have been given. This matter appears to be another regrettable example of the long-standing rivalry between the ASCS and the Soil Conservation Service which erupts periodically to the embarrassment of the Agriculture Department and is a disservice to Farmers."

The White House called an emergency meeting April 9, concerned about lack of farm credit, but apparently decided there was little else Washington could do.

Ed Osburne attended the meeting representing AAM.

AAM was invited to attend the LaRouche Economic Analysis Seminar because, as they said, AAM was not afraid to take a stand on issues and they felt we would be good representatives of the farmers. Ed Osburne attended and had some good input with the people there. David Senter went by later to meet the people. AAM has had a call for an interview with the *Executive Intelligence Review* as a result.

An Agriculture Summit Meeting has been called by AAM for April 23 in Washington D.C. All major farm groups have been invited. AAM feels it is time for all to sit down and come up with a united front and present the issues we can agree on.

AAM will seek action on the loan rate increase bill the week of April 21. The Budget Committee still needs calls and letters from around the country. There are still problems there. (They don't know yet that farmers repay the loans with interest.)

Look out, Cotton folks, the 1/2 million bales is on its way, maybe some from the USSR. We are working on a way to amend the trigger point up to stop imports.

You will be glad to know that Carter added Argentina to the list of countries that may ship sugar duty-free into the US. This is a bit odd since they would not support the US grain embargo on Russia. Many think we ought to stop all the meat imports from them instead of allowing them to ship duty-free sugar.

The USDA gave In'ia \$1,200,000 dollars to research how plants adapt to harsh environments. That should really be a help here.

David Senter

from Darlene Day,  
National Hdqtrs secretary

We have had a very busy week in Washington. If it takes us two weeks or three hours (or for that matter, days) to return your phone calls, try to be patient. We are getting a tremendous amount of calls and requests for information along with our regular meetings and Washington business.

We appreciate all the calls to pass information about what's going on around the

## Who Cares if the Russians Get Grain?

"Who cares?" if the Russians compensate for their lost US grain, the *Wall Street Journal* quoted one USDA official as saying. "That isn't the point...We said the Russians wouldn't get grain from us and they aren't."

A "senior Washington official" was reported to have said that the prices Russia is paying for its replacement grain are believed to be higher than it agreed to pay the US suppliers under its canceled contracts. In Argentina, export corn sells for 40% more than similar corn at US ports.

A grain trading specialist points out that it is not illegal for the shippers to redirect non-US grain to the Soviet Union and fill the original client's needs with US grain.

"I don't think that we are talking about a recession at all; I think we're headed for a full fledged depression," said Senator John Melcher. He recommended cutting down on imports and reducing interest rates.

*Secretary of Agriculture Bob Bergland has suggested that a proposal that farmers be given full parity, subject to a windfall profits tax just like the oil companies, is worthy of further consideration!*

*Editor's Note: Since when is equality a windfall profit?*

Scientists have found that, contrary to previous belief, whole wheat provides iron and other minerals and actually contributes to the body's absorption of minerals rather than hindering it.

Until now it has been held that whole wheat's minerals were unavailable for digestion because they were linked to a substance called phytate. Some texts say that the phytate in wheat bran not only makes iron in wheat unavailable, but also interferes with absorption of iron in meat and other foods.

country. It really helps to know where we can inform all the many callers of the activities.

I have been going through all the files in an attempt to organize some type of system. I am having a tremendous problem with the phone numbers of members, volunteers, and, would you believe this, State Headquarters! It would be a great help if someone from each AAM Headquarters could take time to write in and give us the names, numbers and addresses of those involved in their state. In the meantime, I will continue to work on the files. Thank you for your help.

Darlene Day

## USDA Briefs

(This information has been excerpted from official USDA news releases.)

*The Farm Credit system loaned a record \$59.1 billion during the year ended December 31, 1979, an increase of 31.6 percent over 1978, and an increase twice that posted between 1977 and 1978. Loans outstanding at the end of 1979 stood at \$58.5 billion, an increase of 23.5 percent from a year earlier.*

Scientists are now trying to adapt crops from China to grow in the climates of the US, says the USDA.

## Wayne Peterson Switches to The Independent Ticket

Wayne Peterson, who started out running as a Republican against US Senator George McGovern, has switched to the Independent party.

In announcing the change, Peterson said "It's time to stop being a Republican, it's time to stop being a Democrat, it is time now to be an American, that beautiful word that we have nearly forgotten, the last four letters of which say "I can."

"The political process (2 party system) just doesn't cut it any more. The people of South Dakota and America realize that the political machines have placed this country in jeopardy. Changes have got to be made, and the party line leaders are not going to do that. They intend to return to Washington and continue on the collision course of economic ruin.

"I have decided not to file my petitions for the Republican nomination for US Senate, but instead to run as an Independent. This gives me time to seek out men, women, rich, poor, Republicans, Democrats and Independents whose concern is America, not a political machine...I think the people want a Senator for America, for South Dakota, not for a political group."

In the Rapid City (SD) Journal, writer Bob Imrie said of Peterson "He's a cowboy who quit high school; never gave a major speech until he was 50; has owned only three business suits in his life; chews tobacco on the campaign trail; despises Washington D.C.; but loves agriculture and can't sit idly by because he thinks the federal government is selling America's No. 1 industry right down the tubes." The article was accompanied by a full page length picture of Wayne Peterson.

By filing as an Independent, Peterson has 5 more months to talk about agriculture.

## Parity Gains National Headlines

Ronald Reagan's answer to Don Bergner's question on Parity in Kansas followed him through campaign speeches in Oklahoma, Texas, and Wisconsin and prompted a story on parity and a full explanation in the *Wall Street Journal* of March 28.

Finally, in Racine, Wisconsin at Horlick High School, Reagan said, "Now I can say this. I'm for 100% of parity. I don't want it imposed through the government. I want it through the marketplace. The farmer is entitled to it."

The *Wall Street Journal* says this stance allows Reagan to endorse higher farm prices without necessarily endorsing higher support prices.

Joyce Robinson received a note of acknowledgement and thanks from candidate Reagan for sending him a copy of *Power of Parity*. His personal signature appeared on it.

## Grasshoppers Threaten

Summer grasshoppers could invade 32 million acres in 17 western states this year. As a result, the USDA is seeking public comment on a supplemental draft prepared by the EPA establishing a set of performance standards for aerial application, including large "buffer zones" around EPA-designated sensitive areas. The new standards would eliminate large areas now threatened by grasshopper populations.

In comparison to the 32 million acres now threatened, the largest grasshopper control program ever conducted included only 7.2 million acres. That was in 1979.

Requests for the draft and comments should be sent to Pest Programs Development Staff, APHIS, USDA, room 630, Federal Center Building, Hyattsville, Maryland 20782.

## McWelsh Shows Still on Earth Day

R. P. McWelsh was set to demonstrate his portable alcohol still on Washington Mall on Earth Day April 22. Thousands of tourists were expected.

The alcohol was to be burned in small engines straight out of the still. Most of the engine adjustments were made with a screw driver.

The display is trailer mounted and includes the fermentation tank.

## Around the Countryside

### Kansas — Iowa

(Reported by Dean Goldsmith, Corning, Iowa)

Harvey and Sedgwick Counties in Kansas placed a half page ad in the *Hutchinson News* with a headline that reads "Beat Carter in Kansas." The ad recounts all the harm Carter's policies have done to farmers and to the nation.

Don Bergner, Pratt, Kansas, had his letter about parity (last week's AAM News) printed in the *Wichita Eagle Beacon*, which has a 250,000 circulation.

Bergner's letter was also printed in the Pratt Tribune.

The NFO has been very active holding marketing seminars in Kansas. Shirley Schurman, Seneca AAMer, is working for NFO helping with the marketing seminars and has the title NFO Kansas Public Relations Coordinator.

For more information on NFO activities in Kansas, call Shirley at 913-336-3313.

## Maine

*Senator Edmund Muskie, D-Maine, said in a Senate speech that the government is buying processed Idaho potatoes for school lunch programs in Maine, where school children are eating subsidized Idaho potatoes at a time when their own parents are losing 16- for every 5 pounds of potatoes harvested. Muskie predicted Maine potato growers will lose \$84 million unless markets can be found.*

## Louisiana

Two alcohol plants have been tentatively approved by the Department of Commerce EDA.

One plant is proposed by Nichols State University in Thibodeaux. The other is proposed by Biobeouf Cooperative of Farmers in Ehenneyville.

Both will use only renewable energy; solar, bagasse, and wood for process heat.

## California

Exotic Newcastle disease, a fatal, foreign disease of poultry, has been diagnosed in California. A diseased parrot was diagnosed by a veterinarian. Surveillance for spread of the disease will be maintained for 30 days by APHIS.

Exotic Newcastle disease is a contagious and deadly virus disease affecting all species of birds. Confined birds are highly susceptible.

One bumper sticker reads "I hate Kennedy less than Carter."

## Tennessee

More than 3,000 people turned out on a cold Saturday in February for Congressman Albert Gore's alcohol workshop at MTSU-Murfreesboro.

## Texas

### Message from New State Coordinator

I would like to take this opportunity to say "Thank You," to the delegates and the people of Texas for giving me the opportunity to serve in the capacity of State Co-ordinator. The job is not an easy one, but with the people and delegates of our organization behind me we will continue to make progress in our efforts toward parity.

I would like also to express my thanks and best wishes to Mike McCathern in his new endeavors. We in American Ag owe you a debt of thanks that cannot be paid for your devotion to duty,

organizational ability and for all the "bull" that you took from us while serving in this capacity.

Our job in American Agriculture of Texas is to obtain parity for our crops and our people in the marketplace. We are using every means that we know to accomplish this job, and we must not fail in our endeavors and we must not let anything or anyone divide or weaken our effort.

I will need everyone's assistance in order to be effective in this job. Personally, I need more schooling in alcohol production and licensing, so please be patient with me while you are teaching me the business.

Alcohol is a very necessary tool in our quest and individual production is to be encouraged, I believe. A still on every farm will help our people to become self-sufficient in case of economic collapse, and we will be the people to lead the way back to the free enterprise system.

We have lost and are losing many people from our ranks that are going out of business and can no longer continue the fight as they have in the past. Many of them are continuing to fight from their new jobs, but we do not hear as much as when they were by our sides. As we lose farmers to bankruptcy and farm sales, we realize more and more that we are next, if we don't hurry and accomplish something.

We ARE gaining in our fight, and we must not lose sight of that fact lest we become discouraged and quit.

I would like to ask each and everyone of you to help

me be effective in my new job. We have always been a group that was not afraid of individual initiative. That is, if someone saw something that needed doing, he did it and the rest of us joined in if we could. We need desperately to continue this practice. If any one of you needs something out of the State Office, you must remember that it is as close as your telephone. If the tape recorder answers, leave your name and phone number and I will return your call. Just always remember that this is YOUR office and it can only do what YOU WANT DONE. Work with me, and help me to do a good job.

Key Crawford

Joyce Robinson was to speak April 18 at Davenport, Iowa on agriculture before the Republican National Committee. Also speaking were Peggy Arensman, Kansas, and Nita Gibson, national WIFE president, Texas, and possibly Stan DeBoer from Nebraska.

Further testimony will be taken May 8 in D.C. Stan DeBoer will speak for AAM and Farmers and Ranchers for Reagan.

*The White House was a food problem. It has enough ham. It has enough crackers. Now all it needs is someone who can cut the mustard. (From the Nebraska AAM News.)*

## Bits of Humor

Laurie Schroder called Neil Tischauer and told him she heard that Donna Flippo had been gored by a bull and killed. Neil called Donna and when she answered, asked her if she was all right. He then talked to son Scott and told him the story.

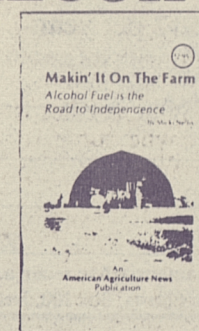
Donna then called Laurie and told her the news of her death had been greatly exaggerated, but that she was calling from Heaven!

## A paycheck you can spend on yourself.

That's what the extra income from your part-time AMS/OIL business can be. Call:

Joe and Nancy Morris  
806-733-2132  
AMS/OIL Synthetic Lubricants

## ALCOHOL - The Fuel of the Future is Available to You Today!



## "Makin' It On The Farm - Alcohol Fuel is the Road to Independence"

Words by Micki Nellis. Photographs by Alden Nellis

This 96 page booklet contains photographs and descriptions of existing alcohol energy plants which produce 20 to 30 gallons per hour of 190 proof alcohol fuel. The Schroder plant in Colorado is described in detail. Blueprints are reproduced. Principles and step by step instructions for processing, fermenting and distillation are included. Contains references for existing literature, enzyme suppliers and plant manufacturers, definition of terms, and an index for easy reference. This booklet is written by an experienced microbiologist/chemist and is a product of solid research.

Order today from:  
American Agriculture News  
P.O. Box 100  
Iredell, TX 76649  
817-364-2474

Single Copy -  
\$2.95 plus 75c  
postage & handling  
Write for wholesale  
prices.

Please send me \_\_\_\_\_ copies of *Makin' It On The Farm - Alcohol Fuel is the Road to Independence* at \$2.95 each plus 75c postage and handling per order. Enclosed is my check or money order in the amount of \_\_\_\_\_ Send to:  
Name \_\_\_\_\_  
Address \_\_\_\_\_  
Zip \_\_\_\_\_



## Make Alcohol Fuel Now!

New Law Effective April 10, 1980 (Permit required, no bond required) will allow you to make up to 10,000 proof gallons per year. For additional information, call 1-800-555-1212 to get toll free number of your BATF Office.

Order New Kit, Complete - ★ Enzymes - ★ ★ Yeasts  
Test Equipment - Instructions

To get your Alcohol Fuel Kit, or any of the items listed below, please fill out and mail the coupon - along with payment - to **ECONOMY ALCOHOL FUEL SUPPLIES**, 4853 Joyce Dr., Dayton, Ohio 45439, Phone 513/299-4283

Qty	Price
Alcohol Fuel Kit(s) - All items below for \$36.00 plus \$2.00 shipping and handling. (Save \$6.70 with kit price.)	
Makin' It on the Farm by Micki Nellis, \$2.95 plus 55¢	
12" 0/0 Alcohol Hydrometer w/Plastic cyl., \$4.00 plus 50¢	
10" (potent, alcohol) hydromtr w/plastic cyl., \$4 + 50¢	
Thermometer, to 110 deg. C., \$3.00 ea plus 50¢	
pH Paper for Acid and Alkaline Tests, \$2.00 ea plus 50¢	
Tes-Tape for Sugar Concentration, \$3.50 ea plus 50¢	
Tincture of Iodine, for Starch Check, 80¢ ea plus 50¢	
★ 2 lbs Diazyme L-100, \$8.00 plus 95¢	
★ 1 lb Taka-Therm L-170, \$4.00 plus 50¢	
50 Camden Tablets for sterilizing juice, 75¢ total plus 25¢	
(20) 5 gm Montrachet ★ ★ yeast packets, \$2.50 plus 50¢	
1 Fermentation lock (vintage plastic) 75¢ plus 25¢	
3 ½ oz yeast nutrient, diammonium phosphate, \$1 + 50¢	

Ohio Residents add 4 ½ % Sales Tax

Total Enclosed \$

Name \_\_\_\_\_  
(Please Print)

Address \_\_\_\_\_  
City \_\_\_\_\_ State \_\_\_\_\_ Zip \_\_\_\_\_

Note: If you prefer not to cut this page, you may order on a separate sheet  
Prices subject to change without notice.

Additional publications may be ordered: *American Ag News*, 51 issues, \$12 yr  
*Lore of Still Building* by Gibat and Gibat, \$3 plus \$1.00.  
★ Enough to treat 35 bu of corn to make approx 90 gals alcohol  
★ ★ Good for 100 gals of juice or to produce 10 gals of alcohol.

up front in fuel alcohol ...  
behind the scenes in Washington ...  
in the middle of the action ...

Subscription Blank  
\$12 per year

Strike Office \_\_\_\_\_

Name \_\_\_\_\_  
Address \_\_\_\_\_  
City/State \_\_\_\_\_ Zip \_\_\_\_\_

ONLY established AAM offices are authorized to retain a \$3 commission and remit \$9 to American Agriculture News, Box 100, Iredell, TX 76649

## The American Agriculture Foundation MEMBERSHIP APPLICATION

NAME \_\_\_\_\_  
LAST FIRST MIDDLE INITIAL  
FIRM \_\_\_\_\_  
ADDRESS \_\_\_\_\_  
STREET, P.O. BOX  
CITY STATE ZIP

TELEPHONE \_\_\_\_\_  
Please Make Checks Payable to:  
**AMERICAN AGRICULTURE FOUNDATION**  
and mail to: Box 57, Springfield, CO 81073  
303-523-6223  
Type of Membership (Check One)  
\_\_\_\_\_ Domestic Farm Producer - \$10 (Voting Member) \_\_\_\_\_ Associate Member - \$10  
\_\_\_\_\_ Business/Corporation - \$100 \_\_\_\_\_ Student - \$10  
\_\_\_\_\_ Public Agency - \$100 \_\_\_\_\_ Sustaining Lifetime Membership - \$5,000

Clearing House for Farm Alcohol Information

## Tractor Runs on Soybean Oil

Don Brahms of Cumberland, Iowa, told *Farm Show* magazine he's running his diesel tractor on 100% soybean oil and has a 30% increase in power over diesel fuel.

The soybean oil he uses is raw. He says the injector pump may have to be set back to avoid overloading the engine. Soybean oil costs him around \$2.00 a gallon, but he hopes someone will turn out a farm size mill so a farmer can process his own. The left over byproduct is 23 to 24% protein.

Toll Free number for alcohol information 1-800-525-5555  
This is the National Alcohol Fuels Information Center in Golden, Colorado.)

A team at the University of Idaho is seeking a government grant to see if vegetable oil can be used as a diesel additive. They are considering sunflower, safflower and winter rape seed oil. (Don't tell anyone, but several farmers already know it works!)

## Alcohol Taxi Takes Off

The nation's first 100% alcohol fueled taxi is running in Minneapolis, Minnesota. The vehicle was converted at the suggestion of Glen Kiecker, secretary of the Minnesota Gasohol Commission and director of the National Gasohol Commission.

Changes included installing new pistons which were fitted to raise the compression ratio from 8:5:1 to 12.5:1. The carburetor was fitted with larger jets. The modifications are simple and similar to those made on race cars and on alcohol-burning cars in Brazil. (This year, 300,000 such cars will be produced in Brazil.)

## Grant Information

The Tennessee Valley Authority (TVA) has approved a program to give back-room inventors incentive. Considered for funding will be proposals for innovative systems to conserve electricity.

For further info, call the TVA toll-free hotline, 1-800-251-9242.

Federal Assistance for Energy Inventors is a free publication available from DOE. It features 101 federal or federally-funded sources for inventors. This book is said to be an excellent resource for those who don't get Appropriate Technology Grants now pending.

The first passenger cars to run solely on alcohol came off the assembly line the week of April 6 in Brazil. The road tax will be half that for gasoline cars. The price of alcohol has been set 30% lower than gasoline. As an intermediate step, Brazil is pushing gasohol.

## Baca Food and Fuel Breaks Ground for Plant

Baca Food and Fuel Co-op, Campo, Colorado, held groundbreaking ceremonies Thursday, April 17 at 1 pm. at the site of its 2.5 million gallon ethanol plant one mile north of Campo on the west side of Highway 287.

The newly organized cooperative, primarily a Baca County venture, will produce fuel alcohol from milo grown in the Southeast Colorado region. "We want to build the plant with as much local labor as possible and purchase all the grain we use from area farmers in order to keep our money at home, benefitting Baca County to the maximum," said Alvin Jenkins, Co-op spokesman.

Jenkins said the plant is an example of how small communities can help themselves without looking to the government for answers.

The USDA has amended meat grading regulations to require that meat graders and their supervisors wear clean, white frocks effective July 1. Provision will be made under the Federal Employees Uniform Allowance Act to reimburse employees for the cost of their uniforms.



"Rhetoric, the skillful use of words to influence or persuade others, comes from the Greek word meaning 'orator.'"

For information on "Back Dollars With Grain" bumper stickers, contact Don Eret, Dorchester, Nebraska 68343, Phone 402-946-3981.

We Can Do It  
If Everyone  
Pulls Together

## Dear Subscribers

Occasionally our addressing crew "goofs" and sends someone a renewal notice by mistake. And sometimes such a notice may cross in the mails with your renewal.

If you are getting your paper, don't panic. If you miss a paper, please let us know. If you get two papers two weeks in a row, let us know.

Subscription Dept  
American Ag News

## Iowa Farmer Builds First Alcohol Plant with USDA Loan

The first on-farm alcohol plant financed directly by a USDA loan is producing 190 proof ethanol in Manly, Iowa. The plant belongs to Jim and Mary Montgomery.

The still's hot, spent beer is run through pipes in cold weather to heat a hog farrowing house and a pig nursery.

Montgomery uses corn cobs to heat the still and uses corn for the raw material. He says he is in effect getting \$3.80 a bushel for his 1979 corn crop.

The Montgomerys and a neighbor, James Rosenberger, modified the carburetor on Montgomery's gasoline IH 806 and they are using ethanol as the main fuel. A dynamometer test shows horsepower improvement from 85 to 98, and the engine runs smoother and cooler.

Rosenberg also fixed up a four-wheel drive Ford pickup to use the alcohol. He had to change the timing, but reports success.

Montgomery first built a small experimental still last summer, then used what he learned to design a larger still. His financial projections on the payout qualified him for a FmHA loan.

The corn byproduct was analyzed for nutritional content and two feed rations for hogs were made up and compared to standard rations. The value of the distillers grain came out at 7.3¢ per pound.

Montgomery is planning to produce 170 proof alcohol, which he thinks is best for burning in his engines.

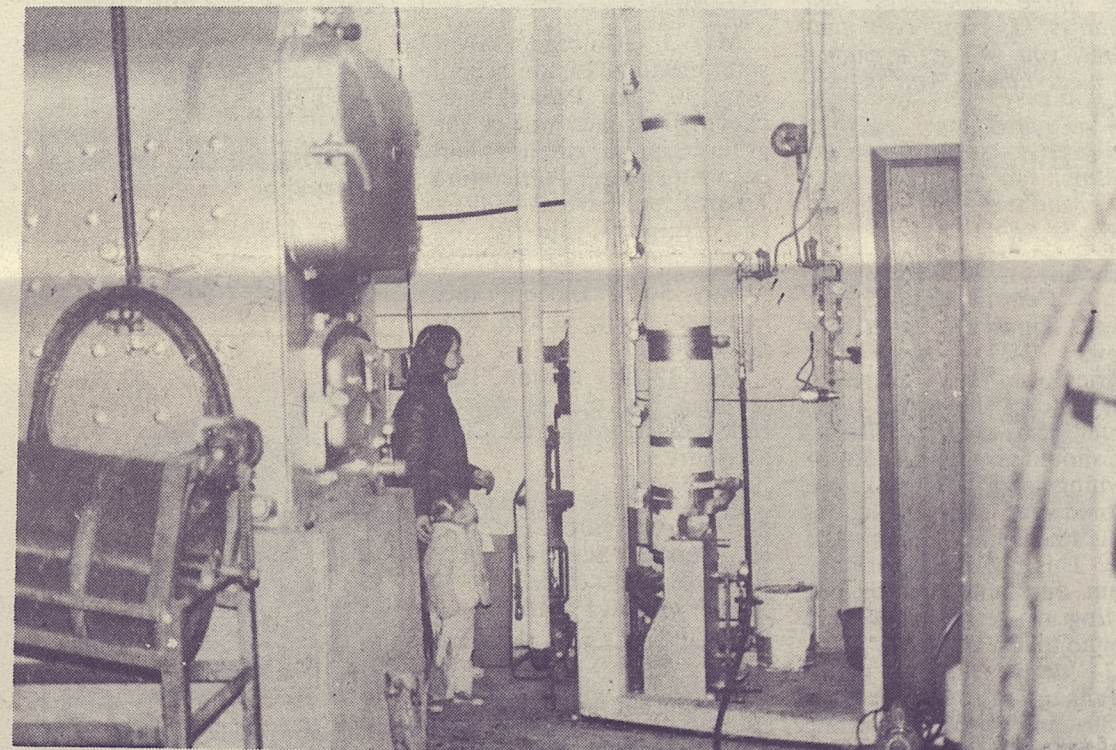
Montgomery has one 32 foot tall, 8 inch diameter column now. He is building a 16" diameter column. He makes a 2,000 gallon batch of beer and distills 8 gallons per hour in his packed column. He separates the solids after cooking, before distilling.

Montgomery, 35, has been farming seven years on a 240 acre farm. He feeds the mash as is to his 1500 hogs, and raises his own corn.

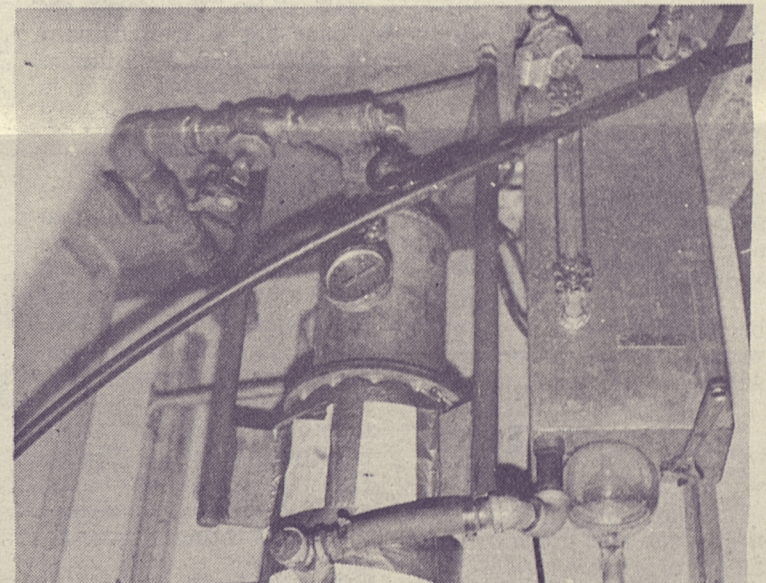
Montgomery estimates the 35,000 to 40,000 BTU's of energy used in distilling costs him around 15¢ per gallon of alcohol.

Montgomery gets 20 pounds of high-protein byproduct and 2.5 gallons of alcohol per bushel of corn.

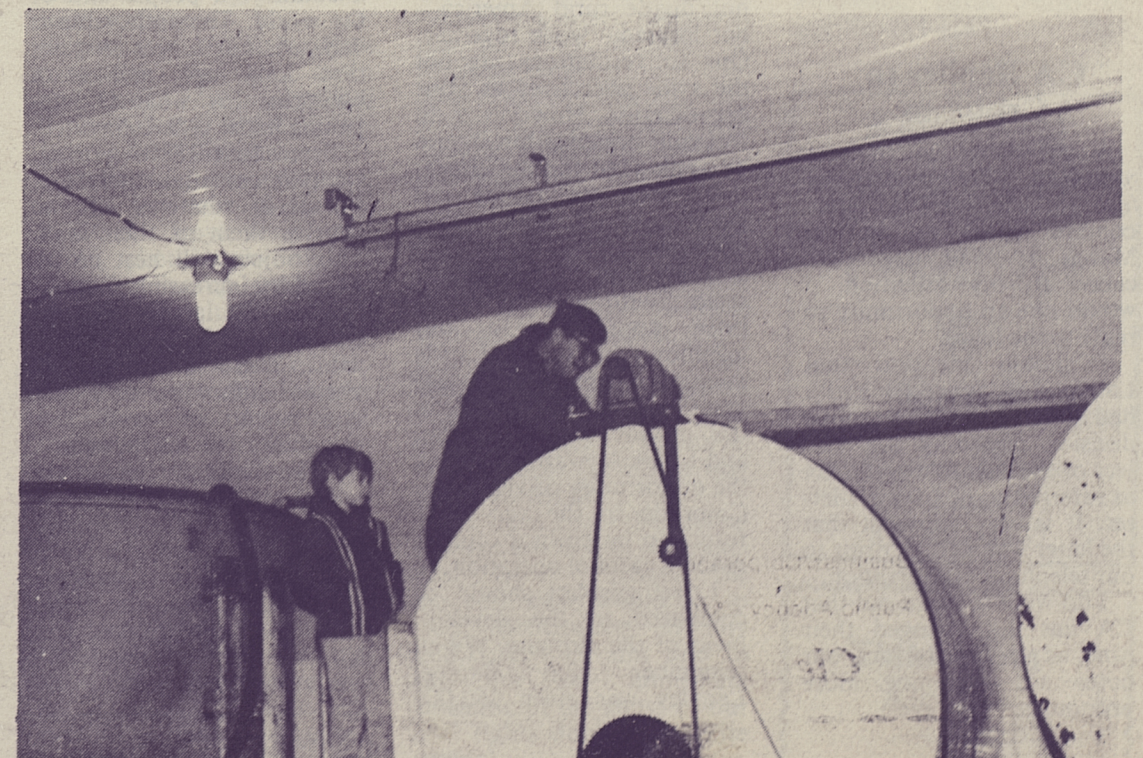
Montgomery wrote a booklet entitled "Facts, Figures, Comments on Alcohol Production" last August, which he sells for \$4.00. (James E. Montgomery, Route 1, Manly, Iowa 50456.)



Base of column.



Jim and Mary Montgomery have the first farm still financed with USDA money. This is the back of the stillhouse, an old converted corncrib.



Above, Mary Montgomery and daughter Heidi, age 2½, check the steam regulator going to the column. Left, boiler and mesh cylinder used for separating mash from beer.

Right, Jim Montgomery and son Jay, age 5, check the cooker barrel. Behind is the fermenting tank. All photos by Jim and Mary Montgomery.



## Speak Out

### Collective Farms Will Succeed

Sure, those collective farms USDA is spending \$16.7 million of ours on will be a success. They don't even have to kill Palestinians or confiscate Arab land to set them up. True, nothing like that has ever been started by the government that hasn't required regular and hefty cash lifts later, but after the initial investment, we just can't let it be lost, can we?

The American Kibbutz directed by Israelis may require that a few of us Philistines who don't like Communism be liquidated later. The original Constitution is little more than a museum piece for tourists to gawk at already.

Why read the book "Which Way, USA, Republic Under God or Dictatorship?" as advised by Beverly Tracy (AAM News April 8)? Few will read, fewer understand, and nobody has guts to act.

Dictatorship? We have been sampling it since the 30s and many are hooked on it like a new addict who doesn't know he has the unbreakable habit yet.

Gordon S. Clark  
Eastland, Texas

### What Happened To Inventor Burke?

Can you tell me what the State of Texas has or is doing to Arnold Burke and his electrical generator. The last I read in your paper, they put a temporary injunction on to stop him from marketing it.

I think the public should be allowed to say if it will work, not a professor. If it will not work, he will not sell but a few.

August Krueger  
Ellinwood, Kansas

Arnold Burke has effectively been shut down by the State of Texas, right or wrong. His assets have been seized.

Editor

### CA Replies to Criticism

A letter written to you regarding *Communicating for Agriculture* in your column "Speak Out" in your March 4, 1980 issue was called to my attention. I would like an opportunity to reply to the letter.

I should mention that Laurie Ann Schroder and I had quite a lengthy telephone decision regarding the subject of the Family Farms Act as referred to in Laurie's letter. It is very apparent that the letter was written prior to our telephone conversation.

I do want to point out that CA has not changed their tune, as a matter of fact, our notes are becoming more pronounced than ever.

The legislation that we support in the state legislatures is not a government funded program. It is a program that is designed to help farmers that have a net worth under a certain amount, usually \$75,000 to \$100,000. This enables them to have funding on a favorable basis in buying real estate for farming operations. The requirements, of course, state that they must be earning their income from farming and that they also must have actual farming experience in their background.

The idea is not new, it has been used for many years by small businesses and home builders in rural America. The concept is to make funds available to the act by the sale of state bonds. The interest rate charged to the lender is usually the same as the interest rate paid to the bond holders.

The only government cost involved is the administration. I would feel that if our approach is to be criticized, then we would have to criticize the Veteran's Administration, the Federal Housing Act and just about every other program that has helped people to purchase their homes over many many years. Also, this same approach has been used many times to help small businesses to obtain financing to start in small towns throughout rural America.

The statement in the letter that when they get everyone accustomed to the idea that the government should own the farmland, then they will move in on the small businesses on Main Street, Rural America, is in complete error. Our programs do not have that intent any more than the Veteran's Administration or the Federal Housing Authority Act would have to end up owning the homes through those acts.

It has always been our philosophy as an organization that we should not divide rural America - but instead - work together. Our six resolutions are not the same objectives as your organization. However, I do feel your organization should be applauded for the efforts that you are taking on gasohol issues. This is an issue that I feel can be only accomplished by the private sector, with the free enterprise approach. In our telephone discussion, Laurie mentioned that there was great progress being made in the production of gasohol and I look forward to having the opportunity of visiting in Colorado in the very near future to be given a tour of AAM's gasohol operation.

I feel gasohol should be compared to the development of the airplane. We all remember that Samuel Langley was given \$50,000

by the government to develop an airplane and all he was successful in doing was crashing it into the Potomac, while the Wright brothers developed the machine that became successful and it was done through the free enterprise system with a minimum of government legislation - if any.

*Communicating for Agriculture's* approach is very similar to that. We recognize that there has to be a certain amount of government involvement, but we certainly do not recognize that government must be the source 100%.

Thank you for the opportunity for me to be able to express our organization's position. We certainly hope that we can continue to complement one another in the future.

M.E. Smedsrud  
President, Communicating for Agriculture

*Editor's Note: AAM as yet has no alcohol plant in Colorado. The operating alcohol plant, the most efficient in the US, belongs to the three Schroders and families. If you visit that plant, you will get a chance to meet Laurie Ann in person.*

### Blueprint for Control

Dear Sir:

"A Central Kansas Farmer," *American Agriculture News* 3-29, wrote of Agriculture Secretary Bergland, "Now he says small farms are not efficient; we should give up the idea of owning land. He thinks we should rent land all our life. This smells like *Trilaterals* to me. This plainly shows they want our land, and by not letting us get paid, we are bound to lose our land."

I don't know about "Trilaterals", but in the 1880s in Europe someone wrote a plan for taking over a country, a people and/or the world. The authorship is debated, but it was in print that long ago and is a blueprint for what is happening in the U.S. today.

From that 1880s writing, "...It is essential, therefore, for us at whatever cost to deprive them of their land. This object will best be attained by increasing the burdens upon landed property...in loading lands with debt. These measures will check landholding and keep it in a state of humble and unconditional submission."

"...We shall raise the rates of wages which, however, will not bring any advantages to the workers, for at the same time, we shall produce a rise in prices of the first necessities of life, alleging that it arises from the decline in agriculture and cattle-breeding."

April 22 - AAM Executive Committee meeting in Washington D.C. with lots of business to attend to.

April 22 - Earth Day. R. P. McWelsh's portable still will be on Washington Mall making alcohol. Thousands of tourists are expected.

April 25 - Oklahoma City, alcohol conference, Ramada Inn Central, 8 a.m. Sponsored by American Agriculture.

Fee \$25 to AAF members who pre-register; \$35 for non-members who pre-register; \$40 at door. For more info, 405-525-3243.

April 26 - AAM meeting at Hobart, Oklahoma, 7:30 p.m. at Mid School auditorium. Harvey Gardner speaking. Jerry Litton film will be shown.

April 28-30 - Biocon, Inc. seminar at the Hyatt Regency in Lexington, Kentucky.

May 3 - Alcohol meeting at May, Texas, 10 a.m. at annual May Day - May Pole Celebration, community center. Displays.

May 3 - Colorado AAM state meeting, Limon school gym, 10 a.m. Potluck luncheon. Discussed will be the grain embargo, ethanol plants, American Agriculture Foundation. Several bankers and reporters will be on hand.

May 5-6 - Biocon, Inc. Seminar at the Hilton Inn, Amarillo, TX.

May 12-13 - Biocon, Inc. seminar at the Raddison Muehlebach in Kansas City, Missouri.

May 30-31 - Middleton, NY, Small Hydro Conference. Contact Schmidt, Tree Farm Energy, Inc., Rt 3, Slippery Rock, PA 16057.

A *Dallas Morning News* editorial, 1-19-80, said a Federal Reserve official told Texas farmers and ranchers "that plenty of money should be available for them to borrow."

April 3, a financier said on the McNeil-Lehrer Report (KERA-TV, Dallas), "Money will be available to farmers if their land is used as collateral." That's a rough quote. Apply Kansas Farmer's statement and voila!

That 1880s document contained twenty-four protocols, above is but part of one. Each of the twenty-four is happening today, as if planned.

And Secretary Bergland is the one whose department is sponsoring the "collective farming" communes projected now being started in Louisiana, Alabama and Florida.

Gip D. Oldham, Jr.  
Dallas, TX

## Coming Up...

June 1-6 - Phoenix, AZ, International Solar Energy Society Solar Jubilee. Contact Gregory Stutzman, c/o Arizona Solar Energy Commission, 1700 W. Washington, Capitol Tower, Room 502, Phoenix, AZ 85007.

June 8-11 - American Wind Energy Assn National Conference, Pittsburgh, PA. Contact AWEA, 1609 Connecticut Ave NW, Washington D.C. 20009, 202-667-9137.

Lamar Community College Workshops, in cooperation with Schroder Farms - Fee \$300. Call 303-336-2248.

April 23-25.  
May 7-9.  
Tentative  
Sept 3-5.  
October 8-10.  
November 5-7.  
December 3-5.

## J.C. Lewis Speaking Schedule

April 23 - Commerce, Texas

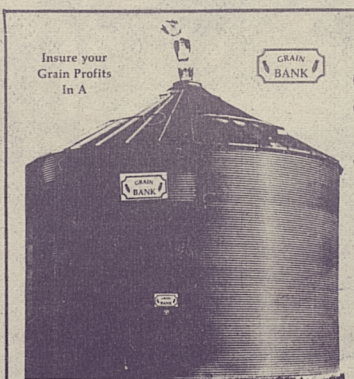
April 24 - Paris, TX

April 29 - Kinsley, KS

April 30 - Tilden, Nebraska.

May 4 - Telethon in Minnesota.

May 6 - Hardesty, OK.



Before you invest in an on-the-farm grain system, check with your local GRAIN BANK dealer and compare. He can offer you a full line of drying and storage bins with accessories.

27' 7 ring drying bin, includes floor, supports, ladders, roof ports, 10.5 hp fan, heater, transition and horizontal unload ..... \$5517  
21' 7 ring drying bin Complete ..... \$4094  
24' 7 ring drying bin Complete ..... \$4773  
30' 7 ring drying bin Complete ..... \$6158  
10,000 bu storage bins and others available at ..... 30¢ per bu AND, WE HANDLE A COMPLETE LINE OF HUTCHINSON GRAIN HANDLING EQUIPMENT!

Any Size Building Available! Call your GRAIN BANK dealer to compare features, specifications, available accessories and service. Then compare the cost! You will find that GRAIN BANK means top quality at a low, low package price! It will pay you to call and save Money and Grain!

Distributed Nationally by:  
E.F.S. Distributing, Inc.  
Corland Nebraska 68331  
402-787-3135 or 402-787-2385

## Proposal Sent to USDA

Recently the following proposal was submitted to Secretary of Agriculture Bob Bergland on behalf of the American Agriculture Movement, Inc.

We, representing the American Agriculture Movement, Inc. recommend the following:

1-90% of parity loans on wheat, corn & soybeans, for compliance producers of production requirements necessary to meet the domestic, foreign and reserve commitments or needs of this nation. Production goals to meet the needs and commitments of the nation shall be set by the USDA one hundred days in advance of normal planting dates for each crop.

2-An energy conservation tax shall be levied against all non-compliance producers. The tax shall be 1) 30% of parity per bushel for wheat, soybeans, corn and feed grains on proven yields times the required diversion acres for each farm, or 2) \$40.00 per acre on wheat and \$80.00 per acre on corn pro rated to other feed grains, \$60.00 for beans, whichever is greater, 1) or 2).

3-Production loans shall be available at a rate of interest

not to exceed government cost in normal production or economic areas and in disaster area for economic or production causes as declared by the Sec. of Agriculture of the USA or a majority of three State Governors selected by the Governor in which the disaster is declared, the rate shall be 5%. Sixty-five percent of the difference between government cost at 5% shall be paid by the federal government and 35% by the state the disaster is in. The maximum loan shall be 45% of parity times the farm yield times acres planted. These loans shall carry a crop mortgage until converted into non-recourse loans at completion of harvest and the balance of 90% of parity is paid by C.C.C.

4-Incentives shall be provided to keep as much of the commodities in on farm storage as possible and practical.

5-Any person selling non-compliance commodities without paying the energy conservation tax will be fined a minimum of \$5,000 or an amount equal to two times the total sale in addition to the original energy conservation tax due.

6-There shall be four separate accounts retained by the USDA for this proposal.

(1) Revolving commodity loan account.  
(2) Interest account  
(3) Energy conservation tax account.  
(4) Fine and penalty account.

7-The three year reserve shall be flexible enough so as to accommodate all excess compliance commodities only. Within three months after harvest the grain should be placed in the three year reserve, interest free. Storage shall be paid one year in advance at a rate equal to commercial storage in the area stored. If the commodities have not been sold at the end of the second year of storage the producers shall receive 5% of parity in addition to the third year storage payment. At the end of the third year an additional 5% of parity will be paid and in the event that the storage agreement is not renewed the producer will be paid a delivery and handling fee of ten cents per bushel the first five miles and one half cent per bushel per mile thereafter.

8-If it is necessary to avoid budget exposure of a loan program described in item one you can change the word loans after parity to minimum selling price in the market place at first point of sale.

9-Producers shall receive compliance production sales cards from ASC at no expense. Producers shall receive non-compliance sales cards from ASC only after payment of their energy conservation tax and any penalties due.

10-Non-compliance producers will not be eligible for any of the following programs: Fed. Crop Ins., Grain Reserve Programs, Operating loans, or diversion payments for two years.

## Think Farm Alcohol

## Think Gasohol

## Classified Action Ads

20¢ per word

**Just Received** - Fresh from the bindery. *American Agriculture News* Volume 2, \$40 hardbound. Also available: Volume 2, complete set unbound, \$25; Volume 1 hardbound, \$40; Volume 1 complete set unbound, \$25.

## For Sale

**Wanted: Block for 3020 JD,** gas. Box 341, Celina, Texas 75009. 214-382-2415.

**MAXOIL**, Formula, Factory, Equipment, and Inventory Auction - April 22, 1980 at 1:00 p.m. (Includes two 1,000 gallon vats and mixing pumps - will mix gasohol). Shattuck, OK (405) 938-2041

**Alcohol Fuel Plants.** 40,000 to 40 million gallons per year capacity available. Plant tours to observe alcohol production in 40,000 gallon units by appointment. Orders now being accepted. For details or appointment call 303-893-8936. Easy Engineering, 3353 Larimer, Dept AAN, Denver, CO 80205.

## Jobs Wanted

**Man wants job** with farm group in Texas in fuel alcohol production. Several years experience in ag chemical and fertilizer development work. Ag degree. Resume on request. Write Fred L. Marr, Route 3, Floydada, Texas 79235 or call 806-983-3165. 3tp9

## Donald Paddock Fertilizer & Seed

Krum, Texas  
817-482-3757  
817-482-3437

## Think Farm Alcohol

Donna McCue  
Springfield, CO

## Crop Monitoring By Satellite Invades Farmers' Privacy

For some time farmers have been aware that the government uses satellites to monitor crop development. These practices have been justified, especially to foreign countries, by saying such information was important to national defense (the theory is that countries whose domestic food supply is short tend to become militaristic; forewarned is forearmed.)

In the March 31 edition of *Forbes* magazine, Lockheed has an advertisement that should greatly concern farmers in the United States. It reads, "Watching wheat from 560 miles up. The world's vital breadbasket is the wheat field—it yields our most abundant and widely traded small grain. So wheat is worth keeping an eye on. And doing just that are a space satellite, an elaborate computer, and a cract NASA directed team of 300 Lockheed scientists and technicians.

From a satellite orbiting 560 miles high, the Lockheed analysts receive continual visible/infrared images of 5 by 6 mile segments of the world's eight major wheat-growing areas. Main concentration is on the United States, Canada, and the U.S.S.R. In a painstaking, high precision process, they piece together the images and use weather, crop conditions, and farming practices to identify wheat. Then they feed the data into the computer, already programmed with yield models, to analyze wheat acreage.

The resulting forecasts—in bushels per country—are of critical value to American agriculture and, in particular, to export planning. This technology may soon cover all major world crops, but the first interest is wheat...because wheat fields supply a whopping one-fifth of the total calories consumed by mankind."

Now that we know in black and white that this practice is going on, it makes the ridiculous rigmarole farmers experience while participating in U.S.D.A. farm programs even more ludicrous! Making several trips to local A.S.C.S. offices for sign-ups, certifications, measurements, checks on our fields by A.S.C.S. employees, and aerial photographs of our fields each crop season are some of the biggest duplications of efforts, waste of time, and waste of taxpayer's money that has ever been thrust upon Americans!

The truth of such unnecessary squandering of Uncle Sam's dollars is that there is no easier way for the federal government to gain control over the domestic food supply and its producers than by regimenting the farmers through 'farm programs.' Every time an American farmer participates in these programs, he is giving up a little more of

his freedom and giving in to a little more socialism!

The U.S.D.A. programs, from the very first one to the present one, teach farmers to rely on "Big Brother" to augment their incomes when crop prices are low and take away their initiative for making individual production decisions!

It seems that satellite monitoring of crops, for whatever reason, is the ultimate invasion of privacy, and, in reality, is only spying! It is most doubtful that producers of other commodities would allow the federal government to meddle in their individual businesses to the extent that agriculturists do.

We must force the federal government to halt these tactics! How? Perhaps the quickest ways would be to stop participating in any U.S.D.A. programs and to call for an immediate cessation of the abuse of our civil rights done by satellite spying!



# federal register

by Carol Ebert, St. George, Kansas

**CCC amends Farmer Owned Grain Reserve Program** to provide that corn producers under the previous program and who execute new agreements before March 31, 1980, are eligible for interest waiver provisions for the first 512 million bushels of grain entering the new Grain Reserve Program. The need for this action is to provide equity among corn producers and encourage producers to execute new agreements and enter the new program. Final rule effective 1-7-80.

**Citicorp (Rockefeller controlled)** submitted application to take over activities of Advance Mortgage Corporation, Missouri, and to engage in mortgage loans, particularly mobile home, in the remaining fifty states. Interested persons may express comments as to whether this proposal can reasonably be expected to produce benefits to the public, such as greater convenience, increased competition, or gains in efficiency, that outweigh adverse effects, such as undue concentration of resources, decreased or unfair competition, conflicts of interest or unsound banking practices. What an understatement! Comment by April 24 to Secretary, Board of Governors of FRS, Washington, DC 20551.

**ITA** has determined that fresh winter vegetables (cucumbers, eggplant, peppers, squash, and tomatoes, not cherry) are not being sold at less than fair value by importation from Mexico since a relatively high level of sales below cost is normal and to be expected (what moronic logic!)

**ICC exempts rail transportation of peanuts** (first, of course), sweet and regular potatoes, bananas, cocoa beans, green coffee, fresh mushrooms, fresh fish and other marine products, dried beans, dried peas, and dried lentils to encourage greater railroad participation in the transport of these commodities. Final rule 4-10-80. Implementation of duty concession on Life Cattle Imports from Canada to be 1¢ per pound in accordance with international agreements between Canada and the U. S. of September 17 and 21, 1979. Fr. Vol. 45, No. 62; 3-28-80.

**Treasury Customs service** proposes rules for the valuation of imported merchandise. An earlier proposal states, among other things, that if an importer could prove the cost of production to be different from the fair or foreign market value, the cost of production would be used to value the incoming product. This earlier proposal was deleted from this column for fear of jeopardizing such an en-

couraging position for if the cost of production would prevail on imports, it would prevail on exports.

The current rule (bless their hearts) dismantles the cost of production priority and even eliminated the "American selling price" basis for valuation and replaces both with a primary and secondary valuation procedure based on transaction value of imported or identical or similar value merchandise. Then uses a complicated deductive and computed value for determining import values. (There are thirteen pages of 'discussion' of these proposed rules, but it boils down simply to the continued rip-off of farm commodities and whatever else they will get their hands on.) Comments are allowed until May 30 to Regulations and Research Division, U.S. Customs Service, 1301 Constitution Ave. NW, Room 2335, Washington, DC 20229.

**CFTC grants authority** to the Director of the Division of Trading and Markets and to members he designates the authority to grant registrations and renewals of futures commission merchants, associated persons, floor brokers, commodity pool operators and commodity trading advisors, and revocation authorities are also granted with Commission approval. Final rule.

**The Packers and Stockyards Act** is under review and policy statements will be made. Further information from John Sands or Harry Williams at USDA (202) 447-6771. Comment by May 30 to Acting Deputy, AMS, Packers and Stockyards, USDA, Washington, DC 20250. Fr. Vol. 45, No. 63; 3-31-80, Books 1 and 2.

**The Federal Home Loan Bank Board** reduced liquidity levels from 5½% to 5% and reduces short-term liquidity from 1½% to 1% to provide members with greater portfolio flexibility and to expand the ability of individual members to pursue varying strategies designed to improve their earnings (in plain language that means when the strings are pulled in New York, the dominoes will all go with a gentle tug.)

**AMS proposes to amend cotton standards** to revoke good middling light and grey and to revise strict middling light spotted and grey. Public hearings will be held in Memphis, Tennessee, May 20-21 (including overseas marketers.) Time and place not stated. Comment by June 2 to Harvin Smith, Chief, Standards and Testing Branch, Cotton, AMS, USDA, Washington, DC 20250.

**WASHINGTON--The House April 1, acting under a speed-up procedure, passed and sent to the White House a bill authorizing the entry of some previously ineligible 1979 crop corn and wheat into the farmer-owned grain reserve administered by the Agriculture Department.**

The bill (S.2427) would give the Secretary of Agriculture discretionary authority--to the extent he finds necessary to expand the grain reserve--to approve reserve entry for farmers who did not comply with the 1979 setaside regulations. Farmers putting grain in the reserve are eligible for long-term government price support loans on their crops, which means that a new source of credit would be available to producers whose 1979 grain is made eligible by the Secretary of Agriculture under the bill.

The problem here is that the present Secretary of Agriculture is on record as being opposed to allowing non-compliance grain in.

**Meat Import Limitations, Second Quarterly Estimate:** Aggregate quantity during calendar year 1980 estimated to be 1,516 million pounds. Without limitation amount estimated to be 1,571 million pounds. Since quantity not in excess of 110% of prescribed quantity, no limitations for 1980 are prescribed. Effective 3-28-80.

**FGIS final notice** will expand permissive grain inspection under 'official criteria' to provide for testing of ALL classes of wheat for protein content except mixed and unclassified wheat as of May 1, 1980 unless exemption has been obtained or temporary waiver granted. Fr. Vol. 45, No. 64; 4-1-80.

**Special 90 day limited global import quota for upland cotton** will be 244,030,605 pounds since the Secretary of Agriculture determined average price (80.66¢ per pound) exceeded 130% of average price for preceding 36 months which was a mere 60.34¢ per pound. (Allowing additional imports will, of course, break the price for the American producer and insure that bankruptcies continue on schedule.) Presidential Proclamation 4742 of 3-31-80, signed by Jimmy Carter, Trilateral Commission puppet.

**Department of Commerce** prohibits licensing for sales to U.S.S.R. having to do with the 1980 Olympics. Effective 3-28-80.

**Raw and Refined sugar import fees** for second quarter will be 52¢ per pound, 00¢ per pound, and 52¢ per pound in three categories. By Bob Bergland, ex-Trilateral Commission member. Fr. Vol 45, No. 65; 4-2-80.

Carol Ebert

## The Chaplain's Corner

### James, Chapter 2

My brethren, do not hold your faith in our glorious Lord Jesus Christ with an attitude of personal favoritism.

2 For if a man comes into your assembly with a gold ring and dressed in fine clothes, and there also comes in a poor man in dirty clothes,

3 and you pay special attention to the one who is wearing the fine clothes, and say, "You sit here in a good place," and you say to the poor man, "You stand over there, or sit down by my footstool,"

4 have you not made distinctions among yourselves, and become judges with evil motives?

5 Listen, my beloved brethren: did not God choose the poor of this world to be rich in faith and heirs of the kingdom which He promised to those who love Him?

6 But you have dishonored the poor man. Is it not the rich who oppress you and personally drag you into court?

7 Do they not blaspheme the fair name by which you have been called?

8 If, however, you are fulfilling the royal law, according to the Scripture, "You shall love your neighbor as yourself," you are doing well.

9 But if you show partiality, you are committing sin and are convicted by the law as transgressors.

10 For whoever keeps the whole law and yet stumbles in one point, he has become guilty of all.

11 For He who said, "Do not commit adultery," also said, "Do not commit murder." Now if you do not commit adultery, but do commit murder, you have become a transgressor of the law.

12 So speak and so act, as those who are to be judged by the law of liberty.

13 For judgment will be merciless to one who has shown no mercy; mercy triumphs over judgment.

In order to enter Heaven or to become a child of God, say:

*Dear Father, I know I am a sinner and need forgiveness. I believe that Christ died for my sins. I am willing to turn from sin. I now invite Jesus Christ to come into my heart and life as my personal Saviour. I am willing by God's grace to follow and obey Christ as the Lord of my life.*

## Last Will and Testament Of A Farmer

### I Leave

*To my wife* - My overdraft at the bank. Maybe she can explain it.

*To my son* - Equity on my car. Now he'll have to go to work to meet the payments.

*To my banker* - My Soul. He has the mortgage on it anyway.

*To my neighbor* - My clown suit. He'll need it if he continues to farm as he has in the past.

*To FmHA* - My unpaid bills. They took some real chances on me and I want to do something for them.

*To ASCS* - My grain bin. I was planning to let them take it next year anyway.

*To the Farm Advisor* - 50 bushels of corn to see if he can hit the high market. I never did.

*To the SCS* - My farm plan. Maybe they can understand it.

*To the Junk Man* - All my machinery. He's had his eyes on it for years.

*To my undertaker* - A special request. I want six implement and fertilizer dealers for my pallbearers. They are used to carrying me.

*To the weatherman* - Rain, sleet and snow for the funeral, please. No sense in having good weather now.

*To the grave digger* - Don't bother. The hole I am in should be big enough.

*To the Monument Maker* - Set up a jig for the epitaph, "Here lies a farmer who has now properly assumed all of his obligations."

Author Unknown

**The Embargo Is Not Working!  
Why Not Lift It?**