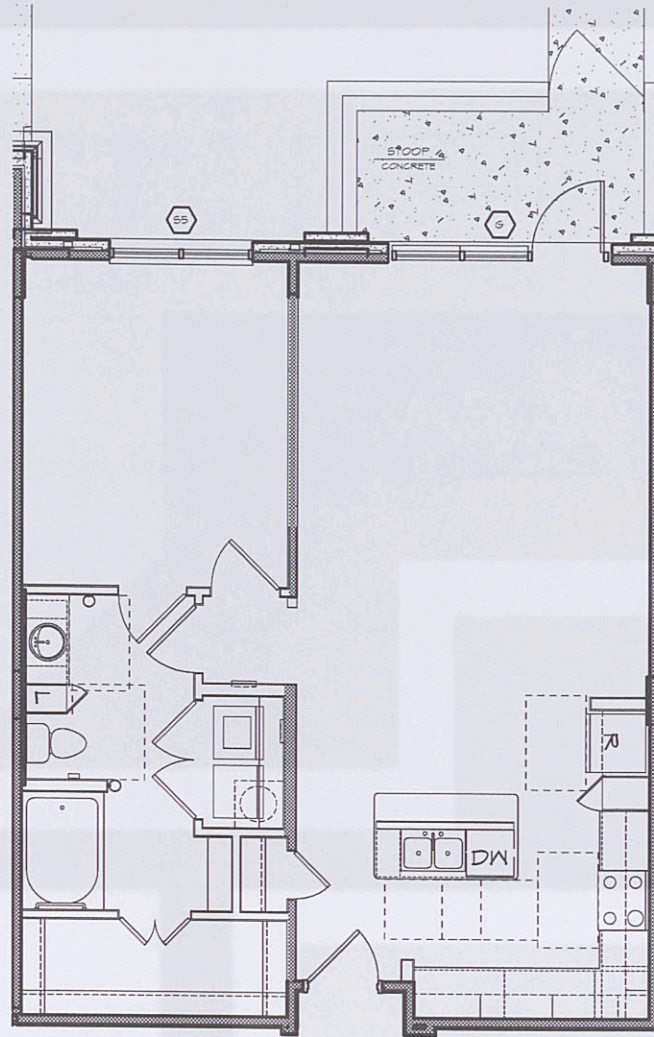
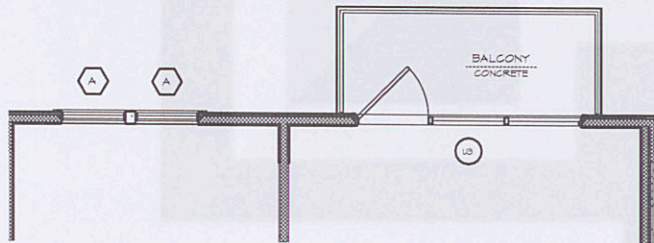


# UNIT NOTES

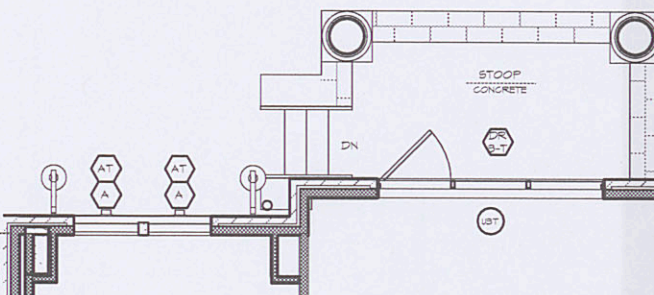
1. ALL DIMENSIONS ON UNIT PLANS ARE TO OUTSIDE FACE OF STUD OR CMU UNLESS NOTED OTHERWISE. STUDS NOT DIMENSIONED ARE 3 1/2" WOOD STUDS TYPICAL UNLESS NOTED OTHERWISE.
2. ALL DIMENSIONS ARE BASED ON 5/8" GYPSUM BOARD AT ALL INTERIOR BEARINGS AND NON-BEARING PARTITIONS.
3. KITCHEN BASE CABINETS ARE 24" DEEP AND BATH BASE CABINETS ARE 21" DEEP, TYP.
4. CLOSET SHELVES ARE MDF SHELVES IV INTEGRAL ROD. 15 IS ONE SHELF MOUNTED AT 64" AFF. 25 IS TWO SHELVES AT 42" AND 64" AFF. 55 IS FIVE SHELVES AT 24", 40", 56", 72" AND 88" AFF. SHELVES AT UTILITY CLOSETS ARE MDF SHELVES. 25/26 IS TWO SHELVES, 16" WIDE, MOUNTED AT 60" AND 84" AFF. EDGE IS A VERTICAL SHOE RACK BENEATH A SHELF.
5. SHELVES AT PANTRY AND LINEN CLOSETS ARE MDF SHELVES. 55/56 IS FIVE SHELVES, 16" WIDE, MOUNTED AT 24", 40", 56", 72" AND 88" AFF.
6. VERIFY EXACT DIMENSIONS REQUIRED TO INSTALL HVAC AND WATER HEATING EQUIPMENT WITH MANUFACTURER BEFORE BUILDING ENCLOSURE WALLS AND FURR DOWNS.
7. VERIFY FRAMING OPENING DIMENSIONS SHOWN FOR TUBS AND SHOWERS WITH ACTUAL TUB AND SHOWER SUPPLIER. ADJUST AS REQUIRED.
8. CEMENTITIOUS BACKER BOARD SHALL BE USED AT ALL TUB/SHOWER AREAS. MOISTURE RESISTANT GYPSUM BOARD WILL NOT BE ACCEPTED AT THESE LOCATIONS.
9. ALL INTERIOR UNIT WALLS AND CEILINGS ARE PAINTED "GYF. BOARD UNLESS NOTED OTHERWISE.
10. ALL INTERIOR UNIT WALLS TO HAVE PAINTED WOOD BASE TRIM INCLUDING MECHANICAL, UTILITY & COAT CLOSETS.
11. UNLESS NOTED OTHERWISE, ALL CEILING HEIGHTS APPROX. 8'-0" UNLESS NOTED OTHERWISE.
12. UNLESS NOTED OTHERWISE, SHADED AREA INDICATES THE LOCATION OF FURR DOWNS AT 7'-8" TYPICAL.
13. REFER TO PROJECT DATA SHEET FOR PROJECT SQUARE FOOTAGE INFORMATION.
14. FOR WALL TYPES REFER TO SHEETS 2009-2009.
15. ALL WORK AND CONSTRUCTION SHALL MEET OR EXCEED ALL APPLICABLE CODES.
16. MOUNTING HEIGHT FOR TONEL BAR INSIDE SHOWER IS 5'-0" A.F.F.
17. MOUNTING HEIGHT FOR TONEL BAR NOT INSIDE SHOWER AND NOT ABOVE TOILET, IS 4'-0" A.F.F. MOUNTING HEIGHT FOR T.P.H. IS 15" A.F.F.
18. ALL INTERIOR ELEVATIONS ARE DRAWN ASSUMING FINISH FACE OF GYPSUM BOARD U.N.O.
19. PROVIDE FINISH PANELS AT ALL EXPOSED END CONDITIONS OF CABINETS AND WHERE DIVIDER DOES NOT HAVE AN ADJACENT CABINET.
20. PROVIDE BLOCKING TO ACCOMMODATE 42" UPPER CABINETS AT KITCHEN.
21. INSULATE ALL PLUMBING RISERS IN WALL WITH BATT INSULATION.
22. FOR ACCESSIBILITY REQUIREMENTS REGARDING ACCESSIBLE ROUTES AND PROTRUDING ELEMENTS, REFER TO A120 AND ANSI 111.1.2004 FOR MORE INFORMATION.
23. FOR ACCESSIBILITY REQUIREMENTS REGARDING USABLE AND ACCESSIBLE DOORWAYS, REFER TO A120 AND ANSI 111.1.2004 FOR MORE INFORMATION.
24. FOR ACCESSIBILITY REQUIREMENTS REGARDING THRESHOLDS, REFER TO A120 AND ANSI 111.1.2004 FOR MORE INFORMATION.
25. FOR ACCESSIBILITY REQUIREMENTS REGARDING THE PRIMARY AND SECONDARY ENTRANCE DOORS, REFER TO A120 AND ANSI 111.1.2004 FOR MORE INFORMATION.
26. FOR ACCESSIBILITY REQUIREMENTS REGARDING SWITCHES, OUTLETS AND CONTROLS, REFER TO A120 AND ANSI 111.1.2004 FOR MORE INFORMATION.
27. FOR ACCESSIBILITY REQUIREMENTS REGARDING REINFORCING AROUND TOILETS, TUBS AND SHOWERS, REFER TO A120 AND ANSI 111.1.2004 FOR MORE INFORMATION.
28. FOR ACCESSIBILITY REQUIREMENTS REGARDING TYPE A & TYPE B BATHROOMS, AND POWDER ROOMS, REFER TO A120 AND ANSI 111.1.2004 FOR MORE INFORMATION.
29. FOR ACCESSIBILITY REQUIREMENTS REGARDING MANEUVERING AND CLEAR FLOOR SPACES, REFER TO A120 AND ANSI 111.1.2004 FOR MORE INFORMATION.
30. FOR ACCESSIBILITY REQUIREMENTS REGARDING CLEARANCE AT BATHROOM FIXTURES, REFER TO A120 AND ANSI 111.1.2004 FOR MORE INFORMATION.
31. FOR ACCESSIBILITY REQUIREMENTS REGARDING CLEARANCE AT KITCHEN AREAS, REFER TO A120 AND ANSI 111.1.2004 FOR MORE INFORMATION.
32. MOUNTING ELEVATION FOR POD DOGS STATION IS 5'-6" AFF.



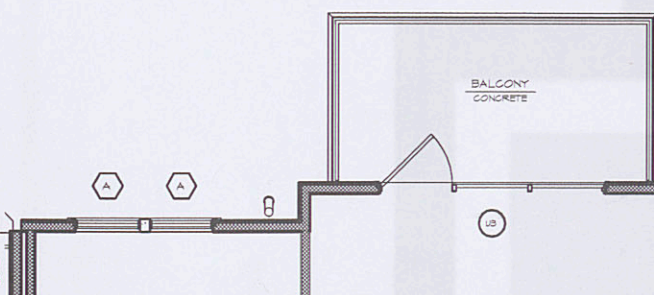
9 Unit A2c - alt 1 864 NRSF  
1/4" = 1'-0" 930 GRSF



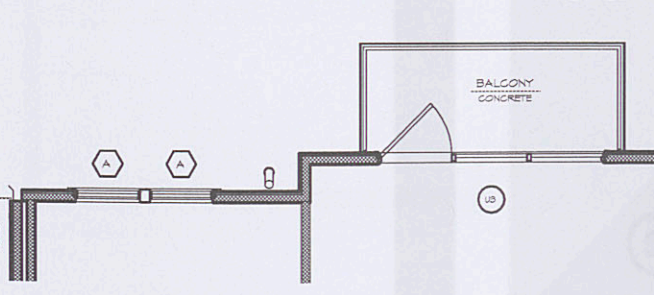
8 Unit A2c 864 NRSF  
1/4" = 1'-0" 909 GRSF



7 Unit A2b - alt 2 853 NRSF  
1/4" = 1'-0" 920 GRSF



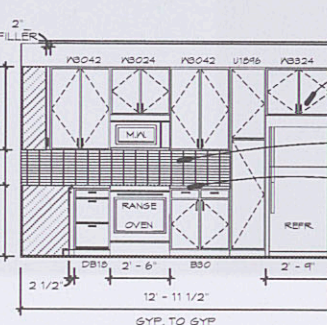
6 Unit A2b - alt 1 853 NRSF  
1/4" = 1'-0" 941 GRSF



5 Unit A2b 853 NRSF  
1/4" = 1'-0" 900 GRSF

## 12 INTERIOR ELEVATION

1/4" = 1'-0"



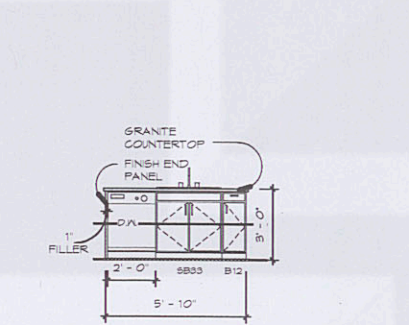
## 14 INTERIOR ELEVATION

1/4" = 1'-0"

1/4" = 1'-0"

## 13 INTERIOR ELEVATION

1/4" = 1'-0"



## 15 INTERIOR ELEVATION

1/4" = 1'-0"

1/4" = 1'-0"

## 16 INTERIOR ELEVATION

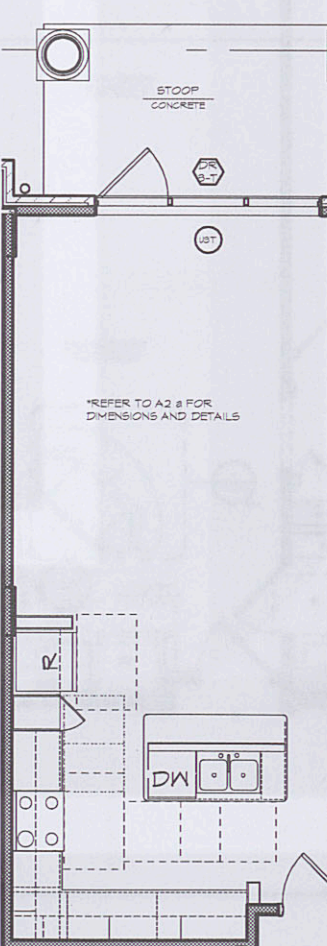
1/4" = 1'-0"

1/4" = 1'-0"

## 4 Unit A2a - alt 4

1/4" = 1'-0"

830 NRSF  
916 GRSF



## 3 Unit A2a - alt 2

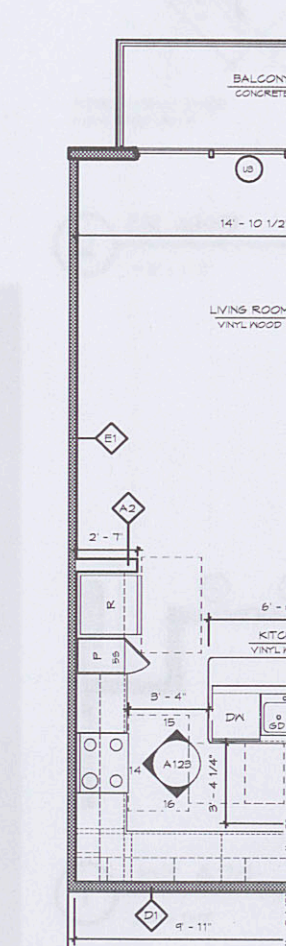
1/4" = 1'-0"

830 NRSF  
921 GRSF

## 2 Unit A2a - alt 1

1/4" = 1'-0"

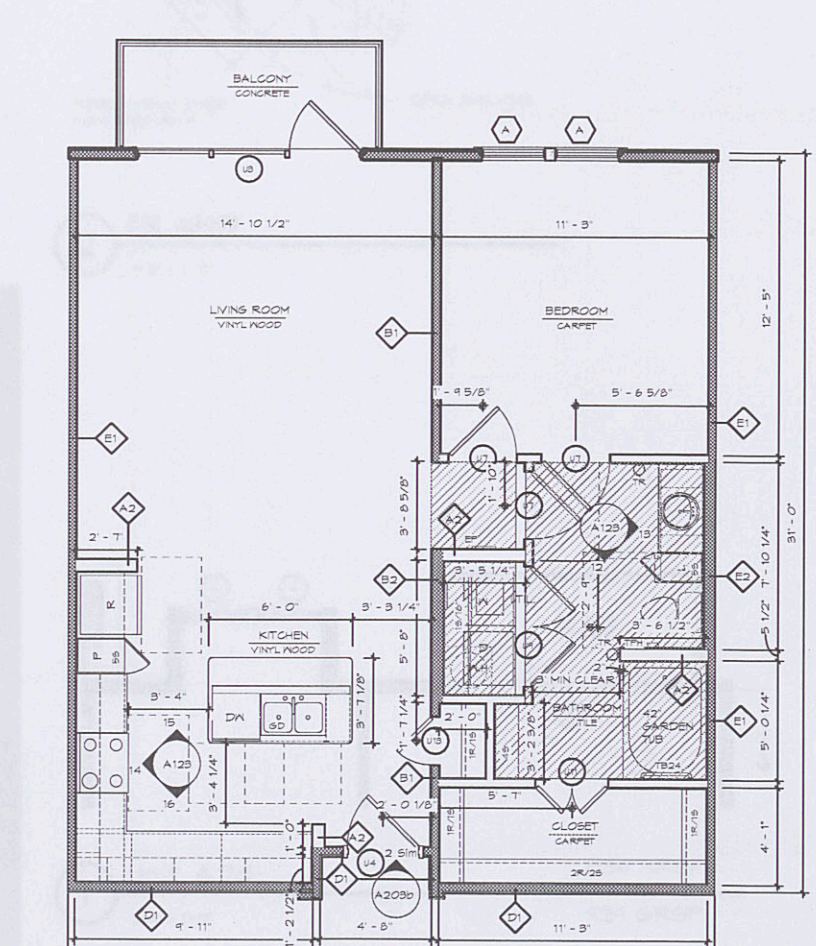
830 NRSF  
880 GRSF



## 1 Unit A2-a

1/4" = 1'-0"

830 NRSF  
875 GRSF



Architecture Planning Interiors Research  
175 Toyota Plaza, Suite 600  
Memphis, Tennessee 38103  
Telephone 901.521.1440  
Fax 901.525.2760  
E-mail info@lrk.com

Client:

### LOADSTAR, Inc.

9830 Colonnade Boulevard, Suite 600  
San Antonio, Texas 78230

### Issues

Date	Issues
12.16.11	50% Design Development
01.27.12	Design Development
04.03.12	50% CD
06.08.12	PRICING SET
07.11.12	PERMIT SET

### No.

Date	Revisions
07/11/12	Addendum One
10/15/12	For Construction Set

©2012 LRK Inc.  
Drawings, written material, and design concepts shall not be used or reproduced in whole or part in any form or format without prior written consent of LRK Inc. Do not scale drawings. Use given dimensions only. If not shown, verify correct dimensions with the Architect. Contractor shall check and verify all dimensions and conditions at job site.

Seal



Project Number: 01.11073.00

Project Name:

La Cantera Mixed Use  
6215 Via La Cantera  
San Antonio, Texas 78256

Drawing Name:

Unit A2

Drawn By: BD, MF, DS

Checked By: BD, BE

A123