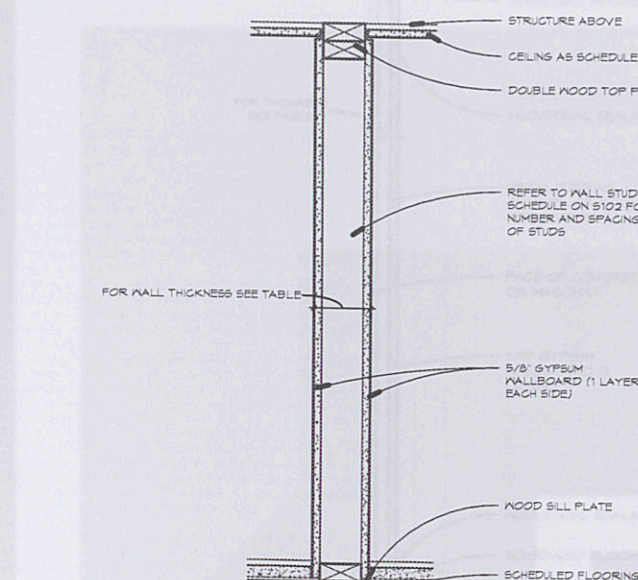
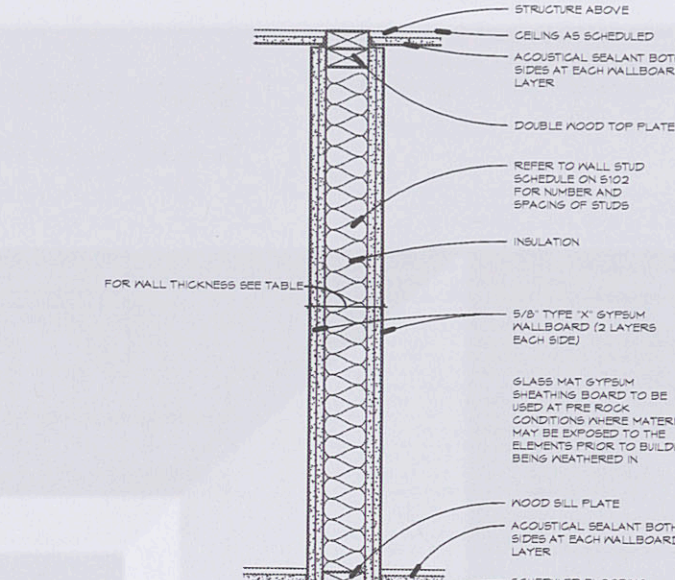


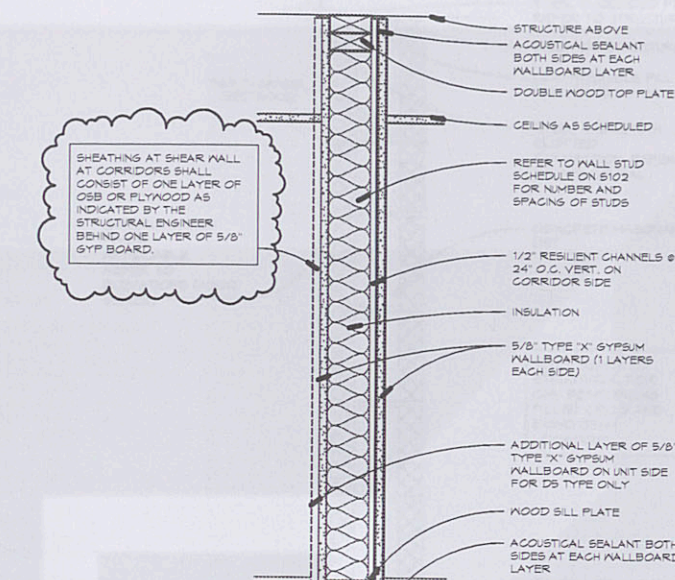
NUMBER	STUD SIZE	WALL THICKNESS	INSUL.	FIRE RATING	S.T.C. RATING	SOURCE
A1	3 1/2"	4 3/4"	NR	-	-	-
A2	3 1/2"	6 3/4"	NR	-	-	-



NUMBER	STUD SIZE	WALL THICKNESS	INSUL.	FIRE RATING	S.T.C. RATING	SOURCE
B1	3 1/2"	4 3/4"	NR	1 HR. U305	35 (B4-B5)	-



NUMBER	STUD SIZE	WALL THICKNESS	INSUL.	FIRE RATING	S.T.C. RATING	SOURCE
C1	3 1/2"	10 7/8"	YES	2 HR. U301	45 (A5-A6)	-

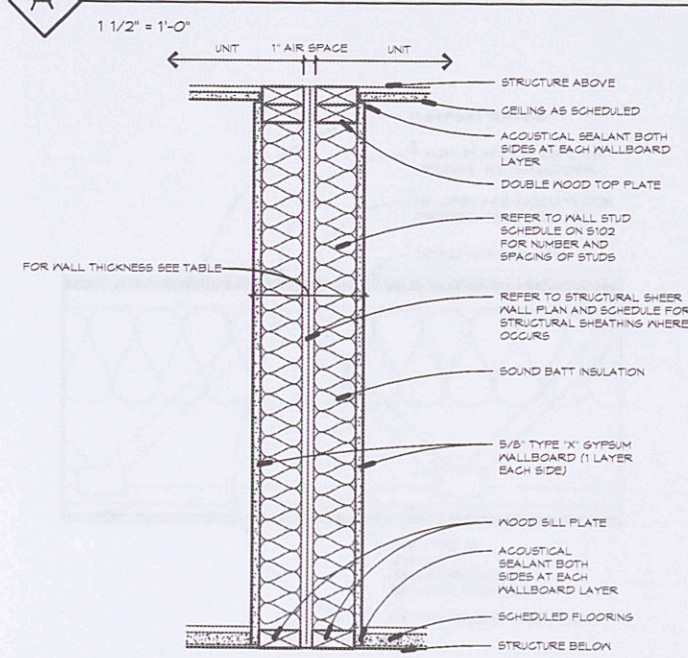


NUMBER	STUD SIZE	WALL THICKNESS	INSUL.	FIRE RATING	S.T.C. RATING	SOURCE
D1	3 1/2"	9 1/4"	YES	1 HR. U311	57 (B3-B4)	SA 3240
D2	3 1/2"	11 1/4"	YES	1 HR. U311	57 (B4)	SA 3240
D3	3 1/2"	9 1/4"	YES	1 HR. U311	57 (B2-B4)	SA 3240

CONSTRUCTION ASSEMBLY NOTES:

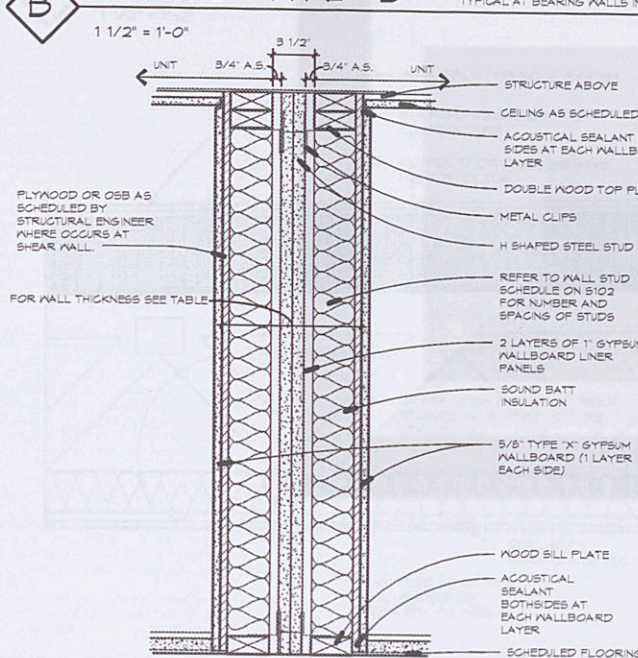
- 1) The contractor shall verify all assembly information with undersubscribers, laboratories, gypsum association, or other organizations listed in the assemblies above. To ensure proper fire ratings are maintained.
- 2) Where S.T.C. (Sound Transmission Class) ratings are indicated, sound-rated wall construction shall include the following:
 - a) Continuous flexible acoustical sealant at the bottom edge of wallboard panels.
 - b) Continuous flexible acoustical sealant or joint tape and mud at wall intersections. Seal between wallboard and dissimilar materials, such as door or window frames.
 - c) Continuous acoustical sealant or fire-caulk sealant (as required by the assembly listing) at the top edge of the wallboard where the joint intersects, or provide wallboard tape and mud where the top joint is exposed to view.
 - d) Flexible acoustical sealant or fire-caulk (as required by the assembly listing) at all full or partial wall penetrations and around openings, flush-mounted accessories, fire extinguisher cabinets, electrical boxes, etc. Line all recesses for built-in devices such as fire extinguishers, cabinets, toilet accessories, etc. with wallboard. Seal all joints.
 - e) Extend sound-rated walls through suspended ceilings and seal the joint at the structure above. Seal all penetrations above the suspended ceilings.
 - f) Extend sound-rated walls through suspended ceilings and seal the joint at the structure above. Seal all penetrations above the suspended ceilings.
 - g) Gypsum wallboard and acoustical insulation in sound-rated partitions should not be interrupted at the intersections with non-sound rated partitions, framing, and wallboard of non-sound rated construction should seal the continuous wallboard of the sound-rated wall.
- 3) Refer to the Gypsum Association Fire Resistance Design Manual GA-600 - Latest Edition, Section 1 Sound Control and to Figure 12 for additional details. Follow Gypsum Association recommendations for effective sound isolation construction.
- 4) Where fire-resistant assemblies are indicated, refer to the referenced fire-rated assembly and provide the materials, brand names, products, and construction methods specified therein.
- 5) All fire-resistant walls and smoke barrier construction where a portion of the construction is concealed above suspended ceilings:
 - stencil a note in 2 inch high red letters (or approved equal) FIRE AND SMOKE BARRIER - PROTECT ALL OPENINGS. No paint along the length of the rated wall should be more than 6 feet from a stencil note. Confirm the note language and spacing requirements with the Authority Having Jurisdiction before application.
- 6) Where flush-mounted electrical outlet boxes (16 square inches or less) are indicated less than 24 inches apart of opposite sides of fire-resistant construction, provide as needed, fire-retardant putty pads to wrap the electrical boxes. Putty pads will be provided to comply with building code and to conform with the requirements of the fire-rated wall assembly, and will be UL Classified "Wall Opening Protective Material".
- 7) Where recessed devices are indicated in fire-resistant gypsum wallboard construction, provide layers of gypsum wallboard between the studs, make the recess - top, bottom, back, and sides, as required to maintain the fire resistance rating indicated. Examples of recessed devices included are toilet accessories, fire extinguisher cabinets, fire hose cabinets, bath fans, recessed lights, etc. unless a rated fixture is being provided to maintain the rating of the assembly.
- 8) Exterior wall construction - All partial penetrations shall be sealed. Penetrations through the interior side of exterior walls shall be sealed air-tight to prevent air infiltration. Examples - electrical box for switch or outlet. Penetrations through the exterior of exterior wall shall be sealed water-tight. Example - hose bib, condair, or pipe.
- 9) Pipe and valve penetrations of wallboard at bathroom and showers shall be sealed using silicone sealant with mildew-resistant properties, such as General Electric Co. "SGS-1701", or Dow Corning 786.
- 10) REFER TO EACH ASSEMBLY'S UL LISTING FOR FULL REQUIREMENTS. DEVIATIONS MAY INVALIDATE RATINGS.
- 11) REFER TO SHEET A0040-1 C FOR FURTHER INFORMATION ON UL ASSEMBLIES.

A PARTITION TYPE - A



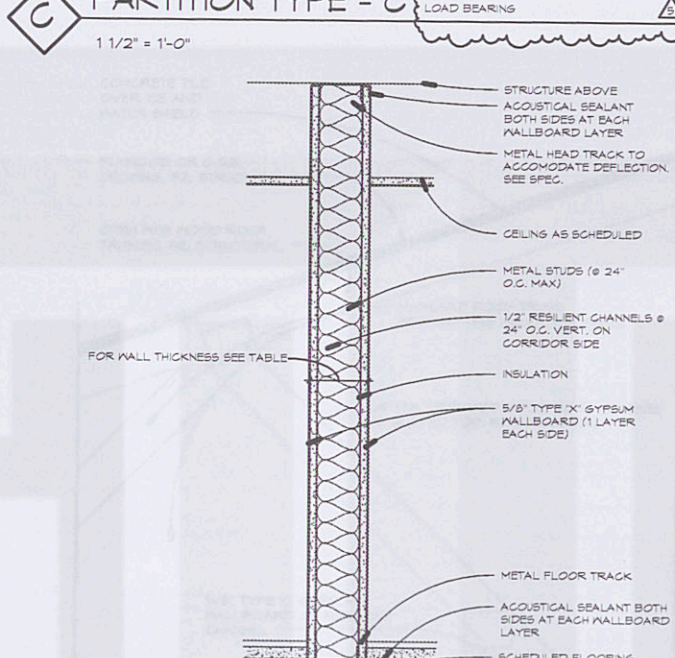
NUMBER	STUD SIZE	WALL THICKNESS	INSUL.	FIRE RATING	SOUND TRANSMISSION	SOURCE
A1	3 1/2"	4 3/4"	NR	1 HR. U305	35 (B4-B5)	-
A2	3 1/2"	6 3/4"	NR	-	-	-

B PARTITION TYPE - B



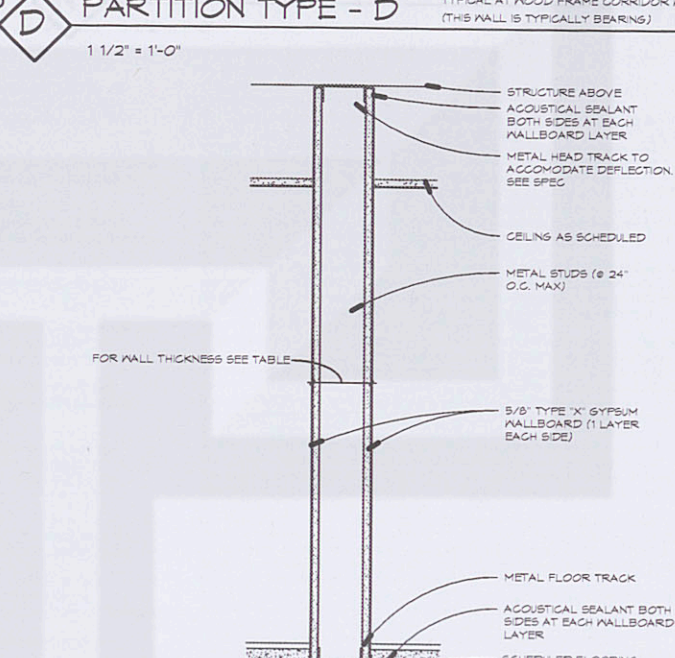
NUMBER	STUD SIZE	WALL THICKNESS	INSUL.	FIRE RATING	SOUND TRANSMISSION	SOURCE
B1	3 1/2"	11 3/4"	YES	2 HR. U347	64 (B0-B4)	-

C PARTITION TYPE - C



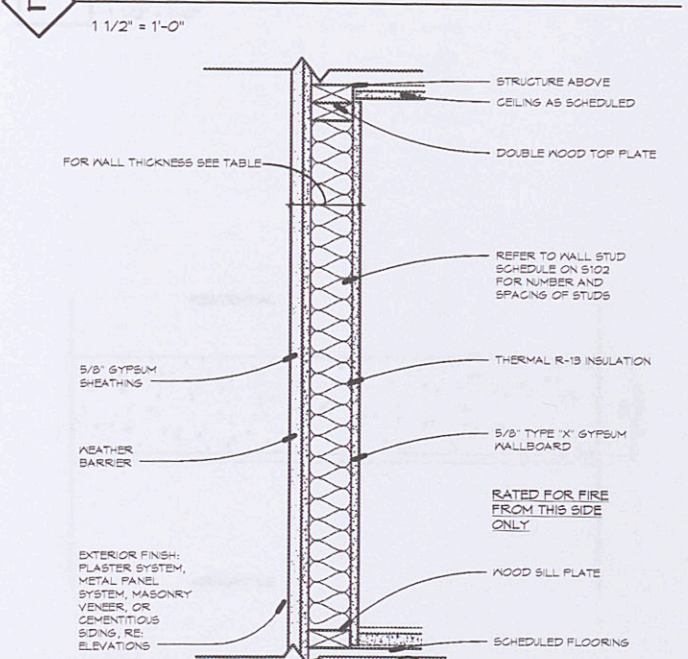
NUMBER	STUD SIZE	WALL THICKNESS	INSUL.	FIRE RATING	SOUND TRANSMISSION	SOURCE
C1	3 1/2"	4 3/8"	YES	1 HR. U465	47 (A3-B3)	45 (EST.)
C2	6"	7 1/4"	YES	1 HR. U465	52 (EST.)	51 (B1-B2)

D PARTITION TYPE - D



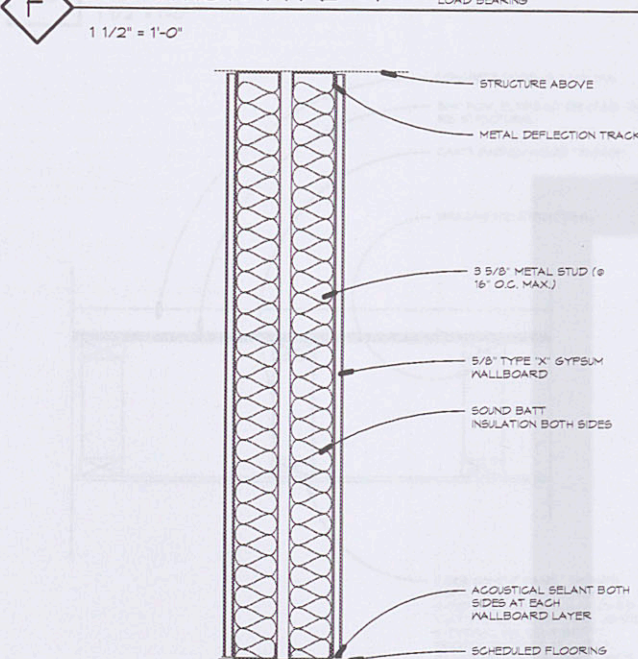
NUMBER	STUD SIZE	WALL THICKNESS	INSUL.	FIRE RATING	SOUND TRANSMISSION	SOURCE
D1	3 1/2"	4 3/8"	YES	NR	N/A	-
D2	6"	7 1/4"	YES	NR	-	-

E PARTITION TYPE - E



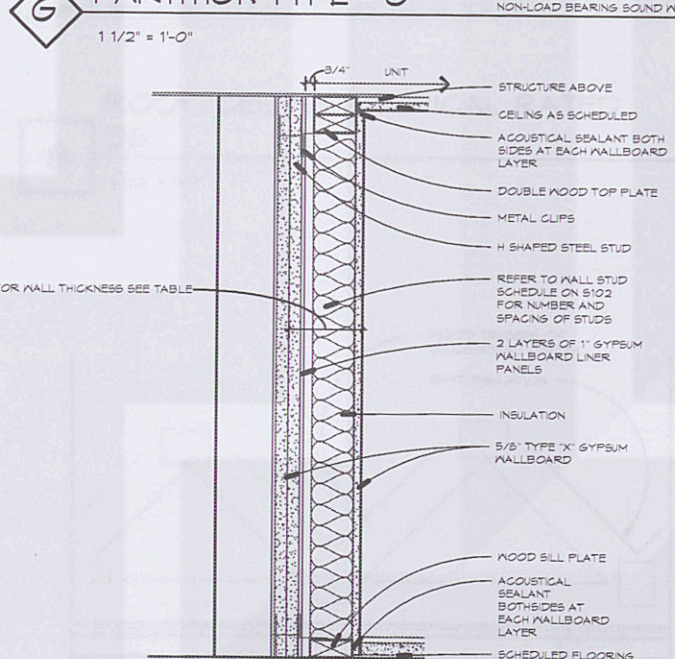
NUMBER	STUD SIZE	WALL THICKNESS	INSUL.	FIRE RATING	SOUND TRANSMISSION	SOURCE
E1	3 1/2"	5 3/8"	YES	1 HR. U356	-	-
E2	3 1/2"	4 5/8"	YES	1 HR. U356	-	-

F PARTITION TYPE - F



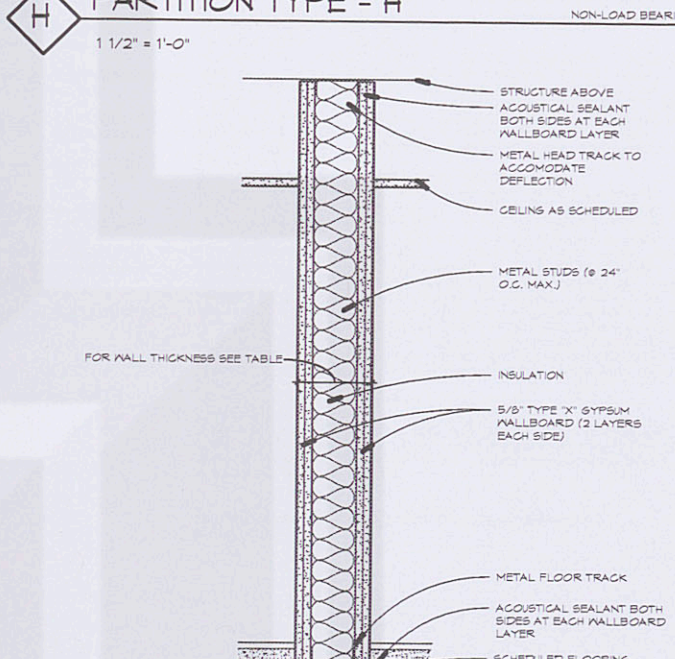
NUMBER	STUD SIZE	WALL THICKNESS	INSUL.	FIRE RATING	SOUND TRANSMISSION	SOURCE
F1	3 1/2"	4 1/4"	YES	1 HR. U460	N/A	51 (B1-B2)
F2	3 1/2"	4 1/4"	YES	1 HR. U460	51 (B1-B2)	52 (B3-B4)

G PARTITION TYPE - G



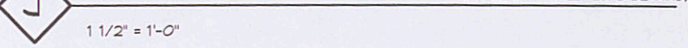
NUMBER	STUD SIZE	WALL THICKNESS	INSUL.	FIRE RATING	S.T.C. RATING	SOURCE
G1	3 1/2"	7 5/8"	YES	2 HR. U347	-	-

H PARTITION TYPE - H



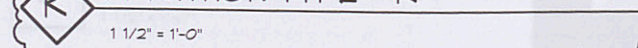
NUMBER	STUD SIZE	WALL THICKNESS	INSUL.	FIRE RATING	S.T.C. RATING	SOURCE
H1	3 1/2"	6 1/8"	YES	2 HR. U465	55 (B5-B6)	-
H2	6"	8 1/2"	YES	2 HR. U465	55 (EST.)	-

J PARTITION TYPE - J



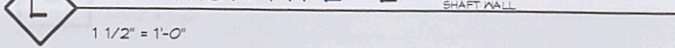
NUMBER	STUD SIZE	WALL THICKNESS	INSUL.	FIRE RATING	S.T.C. RATING	SOURCE
J1	3 1/2"	5 3/8"	YES	1 HR. U356	-	-

K PARTITION TYPE - K



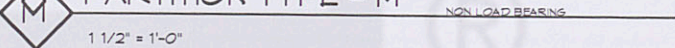
NUMBER	STUD SIZE	WALL THICKNESS	INSUL.	FIRE RATING	SOUND TRANSMISSION	SOURCE
K1	3 1/2"	4 1/4"	YES	1 HR. U460	N/A	51 (B1-B2)
K2	3 1/2"	4 1/4"	YES	1 HR. U460	51 (B1-B2)	52 (B3-B4)

L PARTITION TYPE - L

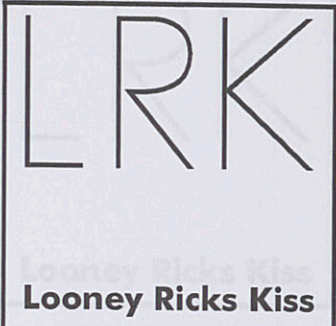


NUMBER	STUD SIZE	WALL THICKNESS	INSUL.	FIRE RATING	S.T.C. RATING	SOURCE
L1	3 1/2"	7 5/8"	YES	2 HR. U347	-	-

M PARTITION TYPE - M



NUMBER	STUD SIZE	WALL THICKNESS	INSUL.	FIRE RATING	S.T.C. RATING	SOURCE
M1	3 1/2"	6 1/8"	YES	2 HR. U465	55 (B5-B6)	-
M2	6"	8 1/2"	YES	2 HR. U465	55 (EST.)	-



Architecture Planning Interiors Research
175 Toyota Plaza, Suite 600
Memphis, Tennessee 38103
Telephone 901 521 1440
Fax 901 525 2760
E-mail info@lrk.com

Client:

LOADSTAR, Inc.

9830 Colonnade Boulevard, Suite 600

San Antonio, Texas 78230

Issues

Date	Issues
12.16.11	50% Design Development
01.27.12	Design Development
04.03.12	50% CD

Date	Issues
06.08.12	PRICING SET
07.11.12	PERMIT SET

No.

Date	Revisions
07/11/12	Addendum One
06/06/12	Foundation/Podium
01/27/12	PERMIT SET REVISION
10/15/12	For Construction Set

©2012 LRK Inc.
Drawings, written material, and design concepts shall not be used or reproduced in whole or part in any form or format without prior written consent of LRK Inc. Do not scale drawings. Use given dimensions only. If not shown, verify correct dimensions with the Architect. Contractor shall check and verify all dimensions and conditions at job site.

Seal



Project Number: 01.110730.00

Project Name:

La Cantera Mixed Use

6215 Via La Cantera
San Antonio, Texas 78256

Drawing Name:

Wall Types

Drawn By: BD, MF, DS

Checked By: BD, BE

A200a