

**PARENTS' WEEKEND**

**success**

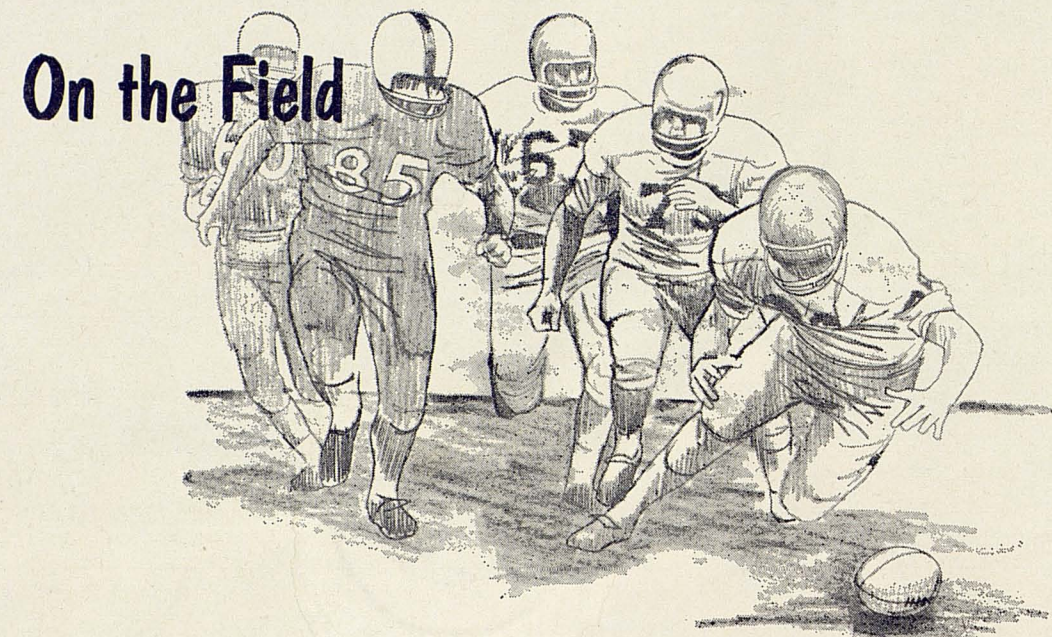


**TCU vs TEXAS TECH**

OCTOBER 10, 1964, 7:30 PM • TCU-AMON CARTER STADIUM • OFFICIAL PROGRAM 25c

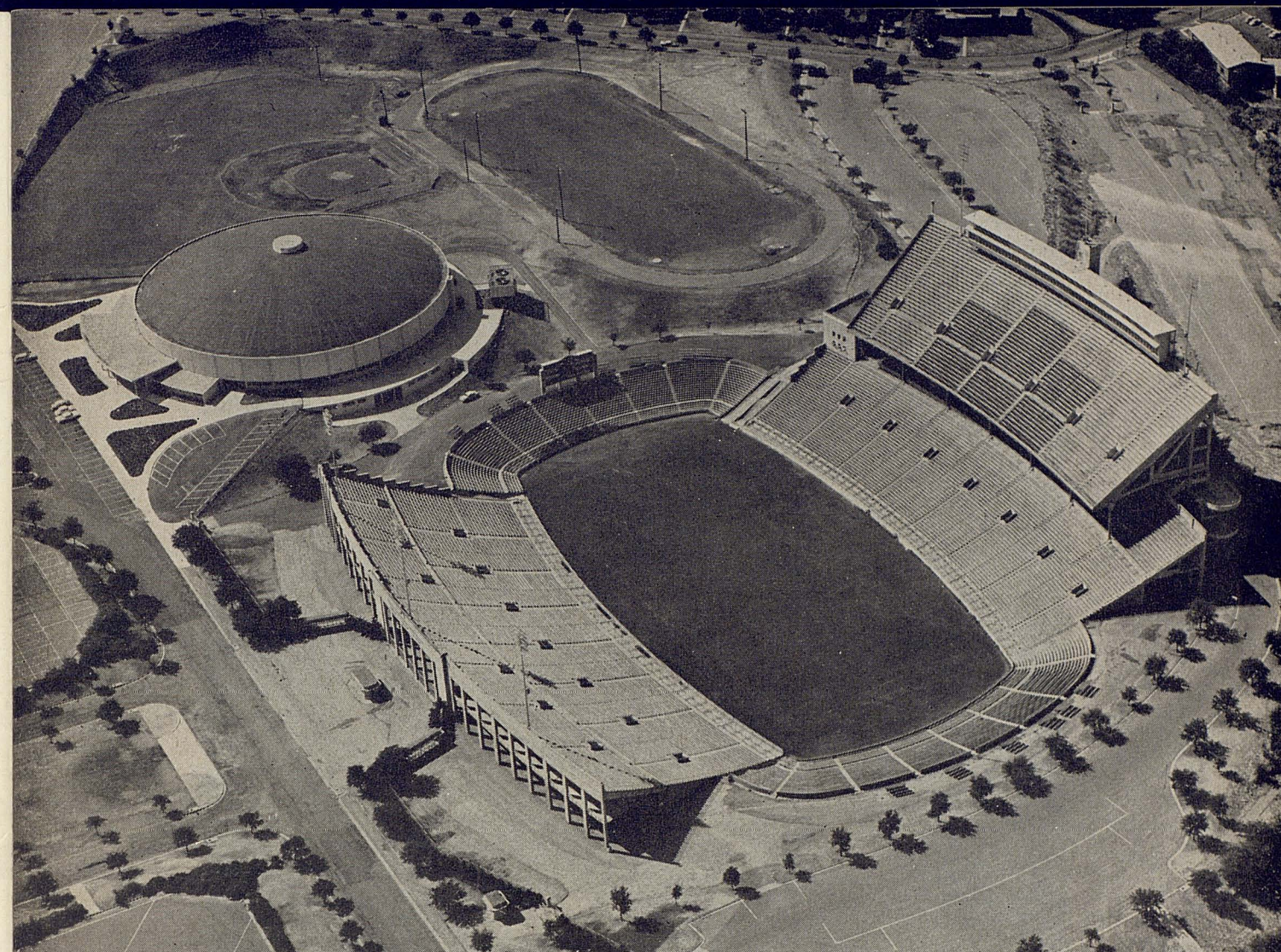
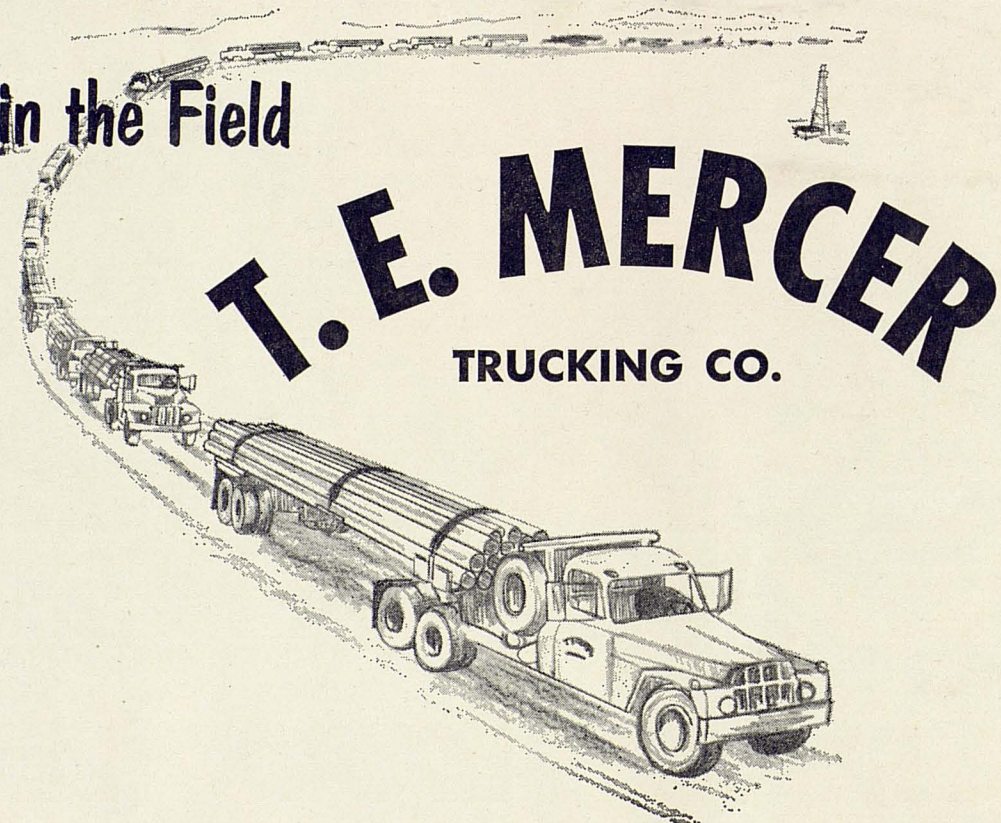


# THERE'S NO SUBSTITUTE FOR TEAMWORK



**TEAMWORK** — the right combination — pays off . . . on the Football field or in the Oilfield. Since 1910, the **T. E. MERCER TRUCKING CO.** — with terminals in Fort Worth, Houston, Lone Star, Texas and Vidalia, Louisiana — has built a winning team in Oilfield Hauling, Pipe Storage, and Pipe Line Stringing.

...Or in the Field



## TCU vs Texas Tech

Chancellor's Welcome .....	2	TCU Roster .....	35
Tonight's Game .....	5-6	Past Results, SWC Champs.....	36
A Look at the Red Raiders.....	6	Frog Reserves .....	38
Athletic Director Abe Martin.....	9	1964 Squad Picture.....	42
Frog Athletic Staff.....	11	Frog Captains .....	44
The 1964 Frogs .....	12, 14, 16, 18, 19, 20, 22	Purple Trainers .....	45
TCU Begins 92nd Session.....	24	TCU Band .....	46-47
Texas Tech Roster .....	26	TCU Cheerleaders, Yells .....	48
Texas Tech Depth Chart.....	28	TCU Basketball .....	50-51
Starting Lineups .....	30-31	Texas Tech Team Pictures.....	53, 54, 55
TCU Depth Chart .....	33	Frog Club Membership Roster.....	57-60

**NEXT HOME GAME: 2:00 P.M., SAT., OCTOBER 24, 1964—TCU vs. CLEMSON**





### *A Most Cordial Welcome to You All--*

For the 24th straight autumn, it is my pleasure to extend a warm and cordial personal welcome to all those visiting on the T.C.U. campus for this very fine athletic event. We are indeed delighted to have you all.

Especially are we pleased to welcome the students, faculty members and many friends of our sister institution. While our young men may compete fiercely on the field, all of us feel the kinship of great goals and mission shared.

This is T.C.U.'s 92nd year. Since 1896, football has been a cherished and exciting part of the University's overall program. Always we have found these stirring contests serving really worthwhile purposes. We are confident that today's event will be in that tradition.

Again, we welcome you one and all to the campus and express the sincere hope that you have a wonderful time.

Most cordially yours,

*M.E. Sadler*

Chancellor, Texas Christian University

*Serving Texans In 50 Counties*

## Elliott & Waldron Abstract Companies



## Elliott & Waldron Title And Guaranty Company

**DEPENDABLE**

**ABSTRACTS AND**

**TITLE INSURANCE**

**Home Office:**

616 W. 7th  
Fort Worth, Texas  
Telephone ED 5-3305

**Hurst Office:**

525 Bedford-Eules Rd. W.  
Telephone BU 2-2565

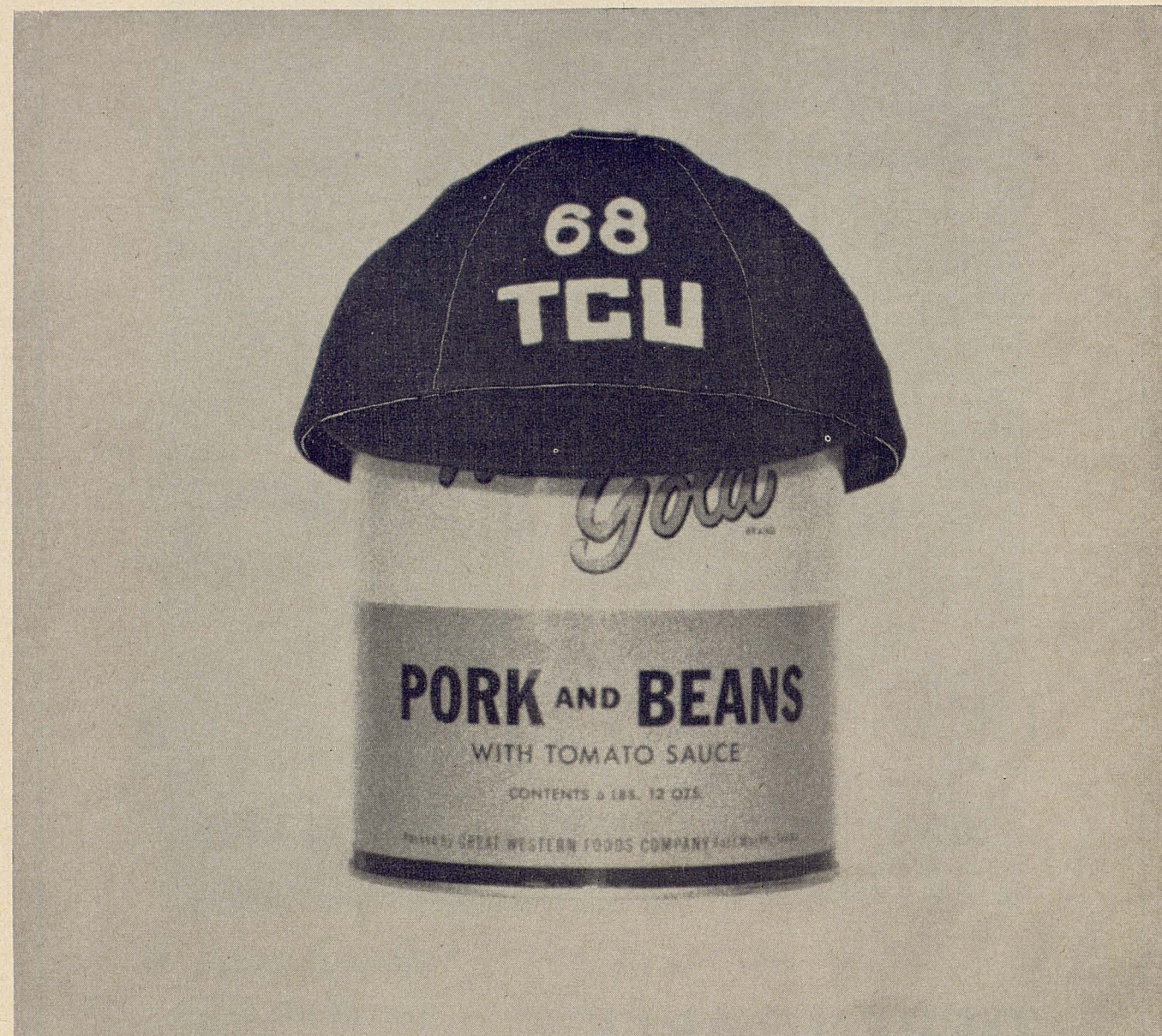
**Richland Hills Office:**

6821 E. Baker Blvd.  
Telephone AT 4-9269

**Arlington Office:**

208 W. Main  
Telephone CR 5-2381





## Pork and Beanies

Pork and beans aren't bad. In fact, they're fairly nourishing. But, everybody needs a change once in awhile. Grab your beanie and live it up . . . eat out. You need not carry a bunch of bills along if you have a "TCU Special" checking

account from University State Bank. Exclusively for TCU students and faculty from

**UNIVERSITY  
STATE BANK**  
'round the corner from the campus  
2712 W. Berry St. WA 4-4271

Member Federal Deposit Insurance Corporation

Fauver-Anderson Match Talents; Many Visitors  
Here Tonight as TCU-Tech Collide as Feature of . . .

# Parents' Weekend!

By JIM BROCK

*Sports Information Director*

The West Texas "championship" goes on the line tonight, as the fast-improving Texas Tech Red Raiders move into Amon Carter Stadium to do battle with the TCU Horned Frogs.

Thousands of Horned Frog parents are on hand for this traditional battle as it is Parents' Day weekend on the Purple campus. Add numerous visitors and students from the fine Panhandle city of Lubbock, plus the many partisan fans, and the setting is right for one of the top contests of the Southwest Conference campaign.

This is a big one for both squads, as a loss probably will eliminate the loser from title-contention. Texas Tech fell to Texas in its League opener two weeks ago, while Arkansas continued its jinx on the Frogs here last Saturday afternoon.

Tech has a fine football team, probably the best all-round squad that has plunged into SWC action in several campaigns. The Red Raiders own a 2-1 record, upsetting both Mississippi State and Texas A&M, while the No. 1 ranked Texas Longhorns socked them, 23-0, in a game marred by wind and rain two Saturdays ago.

J. T. King, the former Texas star, likes this Raider team, and he should as it's easily the finest Tech squad since King moved up from an assistant's post in late 1960. This team could make the finest League showing ever for the Raiders, since it started title play in 1960. The best SWC years came in 1961 and 1963, when the Raiders posted a 2-5 mark, to tie for sixth in League play.

### Anderson Leads Raiders

King started 1964 with experience, having 25 of 34 T-wins from 1963. The entire backfield returns, and King raves about his halfback, Donny Anderson, the outstanding sophomore back in the League in 1963. This stout 200-pound junior thundered his way to all-SWC honors last fall, and was runner-up in SWC rushing, with his 609 net yards on 146 stabs. He also led the League in kickoff returns; was third in punting (he's a gifted left-footed kicker); sixth in total offense; and tied for fifth in interception returns. In 1964, Anderson looks even better. He ranks second in SWC rushing to TCU's Jim Fauver, blasting for 206 yards on 53 tries; is his team's top receiver with 9 for 121 yards; and has a 36.9 average on 18 punts; and two touchdowns.

Anderson will be joined by Tom Wilson, junior squadman at quarterback; fleet Johnny Agan, junior letterman at left-halfback; and tough-running Jim Zanos, veteran fullback in the Tech "I" formation.

Up front, King has several top-flight youngsters, headed by the team co-captains, Center C. C. Willis and End Jerry Don Balch. The Tech staff likes to platoon their units, and a lad with a Frog name finds himself in the Raider secondary on defense, Halfback David

Baugh of Rotan, son of the former Frog all-American great, Sammy Baugh.

The TCU-Tech game is always a crowd pleaser. The Frogs own a 13-7 edge in the series, which dates back with a Purple 28-16 victory at Fort Worth in 1926. In fact, Tech has won only once here, winning 40-20 in 1943. The Raiders' last triumph in the series was a 10-0 verdict in 1961 at Lubbock, while TCU won 35-13 here in 1962; and 35-3 last year in the Panhandle city.

### Fauver Continues To Sparkle

Fauver, the hard-running halfback in the Frogs' Dual offense, meets Anderson head-on tonight in a battle for the SWC rushing lead. The 185-pound Houston Milby product has a net yardage of 228 in 47 attempts, despite having a rugged Arkansas defense limiting him to only 15 net yards. Fauver's blocking also has been superb in the first three outings.

TCU's Abe Martin could have two new starters in the Purple backfield with Fauver tonight. Kent Nix, the talented passer who led TCU to its first touchdown last week, may be at quarterback. The Corpus Christi junior has been plagued with a sore knee since the Kansas opener, and saw only brief work against Arkansas. The other new man is Wingback Bobby Batton, a top-notch receiver. Rounding out the Purple corral, will be Larry Bulaich of LaMarque, who has had a time finding running room. Randy Howard and Bobby Sanders, the usual starters, will still see plenty of work with the top unit, though.

Martin and staff have fretted over the lack of offensive punch, and two others have been moved up to the top eleven for the Red Raiders. They are T-End Charles Campbell of Haltom, who caught 4 of Nix's heaves against Arkansas, including the 15-yard TD shot; and T-Guard Billy Snow of Arlington Heights, who had a high grade on his offensive work against Arkansas.

Defensively, the Frogs have been pretty tough. Linebacker Harvey Reeves, End Joe Ball, Guard Steve Garmmon, Halfbacks John Richards, Dan Jones and Safety Frank Horak have come up with big plays.

### TCU Seeking First Victory

The Frogs have had tough luck in their first three games. Kansas thumped them, 7-3 at Lawrence in the opener, with the Frogs losing the ball at the KU one-

1964 Programs Prepared and Edited By

JIM BROCK

Sports Information Director

TOM PROUSE, Sales Manager

Represented for national advertising by the Spencer Advertising Company, Inc., 271 Madison Avenue, New York 16, N. Y. Local advertising rates on request.



foot line in the fading seconds. The next week, Florida State ruined the Purples' home debut, 10-0, with a Frog field goal being blocked early in the final quarter to set up the Seminoles' decisive touchdown drive. Then last Saturday against Arkansas, the Frogs missed a possible chance to blow a 0-0 game wide open, when a 48-yard pass to the Hog 6-yard line, was called back due to a holding penalty. After that, the Purple offense hit a snag, until Nix put on his passing show in the fourth quarter.

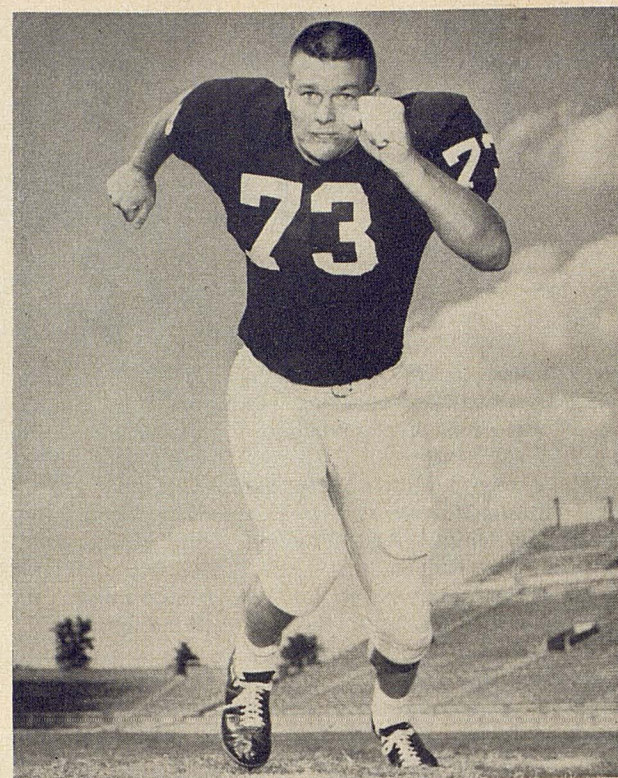
Elsewhere around the Southwest Conference, high-flying Texas met Oklahoma this afternoon at Dallas, while Rice was playing Stanford on the West Coast. Tonight, Arkansas hosts Baylor at Little Rock, a big SWC duel; while Texas A&M is at Los Angeles to test the strong Southern Cal outfit.

#### Texas A&M Next

Next Saturday afternoon, the Frogs take a break from their six-game home schedule, to journey to College Station to contest the Texas A&M Aggies. Kickoff is set for 1:30 p.m. at Kyle Field. The Aggies have a young, spirited group, and they seem to improve with each 1964 game.

After the Aggie clash, the TCU returns home to meet Clemson, Baylor and Texas in a four-week stretch, with an open date between the Baylor-Texas contests. Tickets for all three home games are on sale at Daniel-Meyer Coliseum on campus, with Clemson ducats also going on sale at the Amusement Ticket Office at the Blackstone Hotel, Monday, October 19.

Wednesday night, the TCU freshmen play their second game of the season against North Texas State Eagles here at TCU-Amon Carter Stadium. Kickoff is 7:30 p.m. The Wogs met Texas A&M Fish here last week, while North Texas blasted Tulsa, 53-6, at Denton.



NORMAN EVANS — TCU

One of the Horned Frog captains, Norman Evans is regarded as one of the top linemen on the TCU team. He is 6-5, weights 224, and plays the T-Tackle.

## A Look at the Red Raiders

### GENERAL

*President:* Dr. Robert C. Goodwin, Howard Payne '17.

*Location:* Lubbock, Texas.

*Enrollment:* Over 12,000.

*Colors:* Scarlet and Black.

*1963 Record:* Won 5, Lost 5, tied for sixth in SWC standings.

### THE RED RAIDER STAFF

*Athletic Director:* Polk Robison, Texas Tech '35.

*Head Football Coach:* J. T. King, Texas '38.

*Assistant Football Coaches:* Joe Blaylock, Mississippi Southern '50; John Conley, Kansas State '49; Merrill Green, Oklahoma '54; Matt Lair, Kentucky '48; Jim Wright, Texas A&M '58.

*Head Trainer:* Don Sparks, Texas '50.

*Sports Information Director:* Bill Holmes, Texas A&I.

### THE 1964 RED RAIDERS

*Captains:* Center C. C. Willis and End Jerry Don Balch.

*Returning Lettermen:* 25 of 34 from 1963 squad.

### TEXAS TECH 1964 SCHEDULE

Texas Tech 21, Miss. State... 7

Texas Tech 0, Texas... 23

Texas Tech 16, A&M... 12

Oct. 10—TCU at Fort Worth, 7:30 p.m.

Oct. 17—Baylor at Waco, 8 p.m.

Oct. 24—SMU at Lubbock, 7:30 p.m.

Oct. 31—Rice at Houston, 2 p.m.

Nov. 7—West Texas State at Lubbock, 7:30 p.m.

Nov. 14—Washington State at Lubbock, 2 p.m.

Nov. 21—Arkansas at Lubbock, 2 p.m.

## Before or After the Game

Visit

FORT WORTH'S

#1 SEAFOOD  
Restaurant

LOBSTERS

FLOWN IN DAILY  
FROM MAINE

OYSTERS

ON THE HALF SHELL  
RECEIVED DAILY

GIANT  
DUNGENESS  
CRABS

BILL  
MARTIN'S

Zuider  
Zee

OYSTER BAR  
AND  
SEAFOOD  
Restaurants

LUNCHEON SPECIALS

95c 'til 3 p.m.

SPECIAL CHILDREN'S  
MENU

45c to 65c

3419 W. 7th • ED6-1691

OPEN

11:00 AM

11:00 PM

IN DALLAS -  
5427 DENTON DRIVE  
South of INWOOD ROAD

IN ARLINGTON -  
TOWN NORTH  
SHOPPING CENTER



*Follow the Frogs in '64!*

Serving the Metropolitan Fort  
Worth Market with the best  
in modern outdoor advertising  
. . . for over 35 years.



**Advertising Company**

Painted Bulletins | Posters | Spectaculars

**2108 W. FREEWAY, FORT WORTH**

# ABE MARTIN

One of the most dedicated men in intercollegiate athletics, and the first vice-president of the American Football Coaches Association, tall and personable Abe Martin serves his Alma Mater as both athletic director and head football coach.

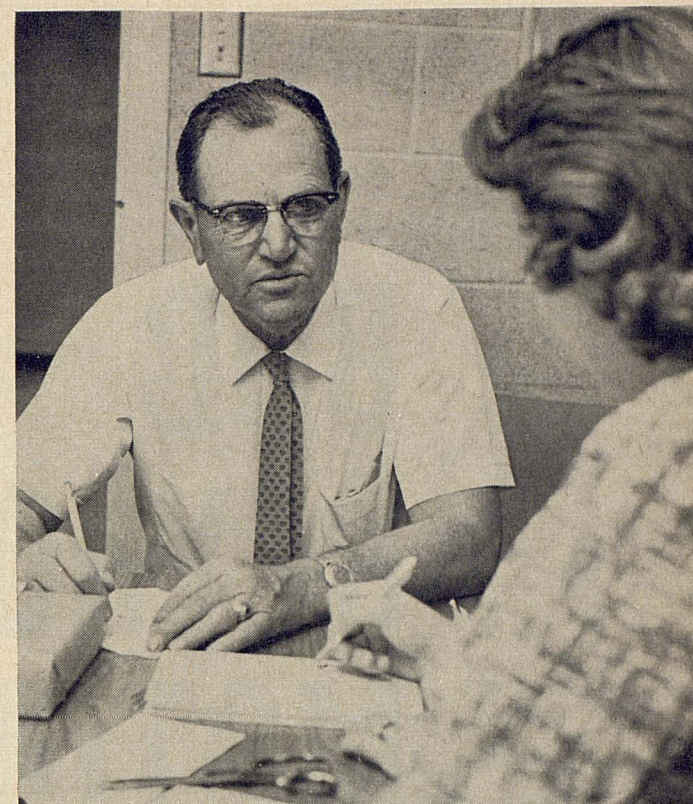
Martin succeeded the famed L. R. (Dutch) Meyer, who retired in June, 1963, after more than 40 years service to the University. Abe has compiled an outstanding record tutoring the Purples since taking over those duties from Meyer in 1953. And now in the dual capacity, the new Frog boss continues to keep the department in its proper place among the nation's top collegiate athletic groups.

Abe Martin started his football career playing high school ball at Jacksboro, a small community 60 miles northwest of Fort Worth. He then performed at TCU under the late Francis Schmidt (1928-1930) as an end and was assistant line coach in 1931 while finishing his B.A. degree. He was a regular on the school's first Southwest Conference championship team in 1929.

After a successful fling at high school coaching, Martin returned to TCU in 1945 to be in charge of the offense under Meyer until 1953 when he was named head coach.

Martin, who along with Meyer flashed some brilliant football from the famed spread and wing-back formations, had yearned for many years to take a crack at the popular T-offense. It was a tough season in 1953 without an experienced quarterback for the important up-back job. Still he won three games and gave national-ranked Michigan State and Penn State quite a scare. Losing six games by a total margin of 39 points, his first frosh recruits from 1953 won only four games in 1954. But with the fabulous Jim Swink rewriting TCU and SWC history in 1955, Abe's men rambled to the Conference title and a grand 9-1 record. In 1956, it was a close second to a fine Texas A&M squad, and won another Bowl assignment with a 7-3 mark. In 1957, the Frogs were the tops defensively but lacked a balanced offense and ended with a 5-4-1 record. Another junior-soph crop, plus exceptional quarterbacking from Hunter Enis, paved the way to the SWC crown in 1958. Then came a furious finish in 1959, winning five straight SWC games, to tie Texas and Arkansas for the title. In 1960, many labeled the Purple title-timber again, but lack of a scoring punch left the Frogs with a 4-4-1 mark, but did include an upset of Southern Cal and a tie with mighty Pitt. In 1961, it was a most unusual season, with a final 3-5-2 record. Included was that great 6-0 upset of Texas, and a 7-7 tie with National Champion Ohio State. The 1962 season proved better, as the Frogs posted a 6-4 mark and finished third in the SWC race. Last fall, Abe had to settle for a 4-5-1 record.

Despite being surrounded by the smallest staff in college ranks, having but five full-time assistants and freshman coach, Abe truly has compiled an outstanding record. Only three other coaches in SWC history have won more titles—Matty Bell, Jess Neely and Dana X. Bible. Also his offense produced the SWC rushing champion four years—1955, 1956, 1957 and 1959. And a TCU back was second in 1958, 1961 and 1962. He also had the best defensive team



three straight years—1957, 1958 and 1959. Abe's 11-year mark shows 62-45-7 overall and 36-31-4 in SWC play. Also his teams have played in four bowl games.

In the high school ranks, Abe also had the victory formula—winning seven district titles and tying for two others over a 10-year span. He won 95, lost but 14 and had one tie.

Martin's tremendous job has won the praise and approval of many, including the University's Board of Trustees who voted him life tenure in 1956.

Sincerely concerned with the welfare of young people, he is highly popular with both boys and girls and develops a deep loyalty among his players. He has many beliefs and philosophies on football, people or just life in general—good reasons why he is such a "close" pal of each boy he has coached for the past three decades.

Abe has been honored in many ways for his devotion to football. He was named Coach of Year in Texas in both 1955 and 1958. He also has been guest lecturer at many clinics including the 1956 Air Force clinic in Europe. He now represents District Six on the National Football Rules Committee. And it was Abe who helped to bring into existence the all-America Bowl game sponsored by the coaches each June at Buffalo, N.Y.

Abe and his wife, Sally, are proud of their son, Don, who was an honor graduate of TCU and Medical School, is a medical officer in the Air Force. Young Martin received his medical license the summer of 1962.

TCU is fortunate to have a man like Abe Martin—one of soundness and simplicity, and one who is devoted to his profession, his University, his staff and his players.



# BOB REYNOLDS MOTOR COMPANY

NEW AND USED CARS

BANK FINANCING, INSURANCE

303 N. HENDERSON, ED 6-2373

*Where Sports Fans Meet*

## THE PURPLE STAFF



**VARSITY STAFF**—All former TCU grid stars, this is the 1964 TCU varsity staff. Left to right, Head Coach and Athletic Director Abe Martin; Allie White, defensive line; Walter Roach, defensive backs; Mal Fowler, offensive backs; Hunter Enis, quarterbacks and offense; Don Jackson, offensive line; Fred Taylor, ends and head freshman coach. Jackson is a new-comer, joining the staff in August.



**Buster Brannon**  
Head Basketball  
Coach



**Johnny Swaim**  
Assistant to  
Athletic Director,  
Ass't Basketball



**Frank Windegger**  
Business Manager,  
Ticket Mgr. and  
Baseball Coach



**Elmer Brown**  
Head Trainer



**Dr. Henry Hardt**  
Faculty  
Representative



**Ted Hajek**  
Assistant Ticket  
Manager, Ass't  
Track Coach



**Tom Prouse**  
Golf Coach



**Ken Crawford**  
Tennis Coach



**Jim Brock**  
Director of  
Sports Information

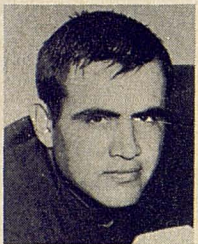


# THE TOP FROGS



**73 NORMAN EVANS, 6-5, 224, 2L, senior.** One of team captains, this one has the equipment to be a fine Conference tackle . . . does all things pretty well, but lack of speed has proven biggest handicap . . . "I like Norman as a football player," says Coach Abe Martin. "He makes up for some quickness by being a determined and conscientious worker. He has a great heart for football." . . .

Evans came to TCU with a top rating, winning all-state honors at Donna . . . then he was a top pick for all-frosh honors . . . enjoyed a fine soph season, starting several games (played 145 minutes that year) . . . knee injury slowed him some in 1963, but again closed with some fine play . . . tireless work and a stout heart could pay big dividends in 1964 . . . is married and father of a girl.



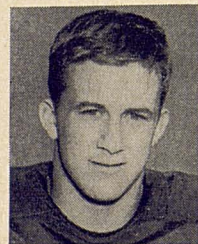
**60 STEVE GARMON, 6-0, 211, 2L, senior.** One of the finest all-round guards in the Southwest . . . seems headed for finest year after gaining much all-SWC recognition in 1963 . . . "If I had a whole line of Garmons, I wouldn't have any problems," reminds Coach Abe Martin . . . quick, strong and intelligent, it seems Steve always turns in a strong game . . . was valedictorian of

his class at Groom, located just outside of Amarillo . . . ankle injury knocked him out of 1961 play, but was alternate regular in 1962 before his splendid year last fall . . . makes Frog middle tough on the opponent . . . wants to go into State Department work after graduation . . . one of the team captains, and a good one.



**21 JIM FAUVER, 5-10, 185, 2L, senior.** The finest all-round halfback on the TCU squad . . . will make strong bid for all-Southwest Conference honors . . . regular for past two seasons . . . this lad owns speed, quickness, balance, is a superb blocker and is a nifty pass receiver . . . expected to make the big play in 1964 . . . came to TCU from Houston Milby, where was blocking back for

ex-Frog Gil Bartosh . . . as freshman, led Wog ground gainers and made all-SWC frosh unit . . . was No. 2 ground gainer in 1962 and 1963 behind all-America Tommy Crutcher . . . also due to handle punting chores . . . is excellent defensive player, but may not see duty here this fall . . . also is track letterman, and would like to coach the sport some day . . . "One of the finest backs I've ever coached," says his Coach, Abe Martin . . . one of team captains, and is married.



**14 JOHN RICHARDS, 6-0, 175, FL, sophomore.** Won the praise of entire staff for his tireless efforts in spring training . . . has good speed, and is top blocker, and defense most of time is above average . . . "One of the finest lads to coach I've had in a long time," reminds Coach Abe Martin . . . fine open-field tackler, so has a shot at No. 1 defensive halfback in early fall work . . . won all-

district honors at Fort Worth Arlington Heights . . . fine prospect, this lad.

**51 KEN HENSON, 6-6, 245, 2L, senior.** One of the finest centers to ever wear the Purple . . . this big lad has all the equipment . . . enjoyed fine spring and early fall drills, and Purple coaches see fine season ahead for this powerful 21-year old youngster . . . missed 1961 play due to hernia operation on second day of fall work . . . starter past two seasons at the important offensive slot, and one of the middle guards on defense, his blocking at times amazes folks . . . already drafted by the pros (Los Angeles in the NFL; and Houston, AFL) there seems to be a fine year ahead there for him . . . named to Tom Harmon's pre-season all-America team for two straight years . . . "I'm predicting a great season for Kenny," said Abe Martin. "I wouldn't trade him for any in the Southwest." . . . former all-state star and great weight man for San Angelo High . . . this could be his year.



**26 LARRY BULAICH, 6-3, 197, 2L, senior.** One of the big keys to the 1964 Purple season . . . a converted halfback, where has been an alternate regular the past two years . . . took to new spot with ease, causing raves from the railbirds at practice sessions . . . "Larry is a solid football player," praises Coach Abe Martin. "He gave me a big lift this spring. With power and quickness, his running reminds us of Jack Spikes. If he stays free of injury, he'll be tough to handle this fall." . . . A real tough runner, especially to the inside, and has enough speed to go wide . . . works hard, as goes wide open at all times . . . as a freshman, had a 5.1 rushing average, and was all-SWC frosh pick . . . as soph in 1962, had top days against Texas A&M and Texas, splitting starting duty entire year . . . last year, had best running game against SMU . . . may not see any defense during 1964, as has no experience at linebacker . . . spring work was tops, but foot injury cut short his work . . . if stays well as Abe says, then look for a surprise among the top SWC rushers this fall . . . his running is that good.



**22 BOBBY SANDERS, 5-10, 167, 2L, senior.** One with the little extra, and seems dedicated to doing his best at all times . . . a converted end, where he was an all-state choice at Fort Worth Paschal and a top performer the past three years in Purple, he seemed natural choice for Abe Martin's new wing-back position this spring . . . size has been handicap at times, but he's above-



average as blocker, usually getting the job done . . . has sure hands, so is fine pass receiver . . . tough and aggressive, has already been in on several big plays here . . . "Bobby has the ability to be a fine wing-back for us," said Martin. "He's never short on try, and I like that." . . . Sanders also has two baseball letters, being both a catcher and outfielder . . . was a quarterback in junior high, before becoming fixture at end in high school . . . one of the best all-round "little" men in League.

**Bobby Malone**

**John L. (Whitey) Blackwell**

## BOBBY MALONE INSURANCE AGENCY

**Suite 244 - Ridglea Bank Bldg. - PE 8-0962**

**AUTOMOBILE - FIRE - LIABILITY - BONDS  
WORKMEN'S COMPENSATION**

**FREE AUDIT SERVICE**

**COMPETITIVE WE ARE**

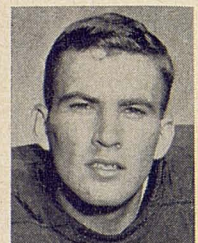


# THE TOP FROGS



**46 RANDY HOWARD, 5-11, 179, 1L, senior.** One of the Frogs who will be closely watched by all in early 1964 play . . . many think this lad could be key to any Purple success . . . will definitely start the fall work in the No. 1 slot after showing in spring drills . . . this lad is a fine runner, in fact above average for quarterbacks . . . but his passing game has just been average, though

showed vast improvement in the spring session . . . "Randy has some things going for him," reminds Coach Abe Martin. "He's a fine runner, not a real good passer, but he uses the pass to complement his running game. This spring, he handled the duties real well. I think he has jelled into a top flight QB for us. He is daring, and has confidence. I just feel he will do well." . . . Randy was an unknown Class B star at Dawson, but as a freshman, carried the Wogs to a 4-1 mark, had a 4.3 rushing average, hit 19 of 35 shots for 283 yards and 3 TDs, and led scorers with 30 points . . . as soph in 1962, just missed a letter but fans remember his great 42-yard sprint against Texas Tech . . . then last fall, was making knots until a sideline tackle, breaking his ribs, stopped him in Texas Tech game and for several outings . . . best day running was 8 for 81 in the mud-rain in the Florida State game . . . as for passing, hit 3 or 4 against LSU, one a fine TD shot . . . developed important leadership in spring . . . a good year here, could bring dividends to Purples this fall.



**86 JOE BALL, 6-3, 199, 1L, junior.** Tabbed the best all-round end on squad, and could make big move for all-Conference honors this fall . . . had a better-than-average sophomore season, despite plagued with knee injury . . . "When Joe was hurt our defensive end play just wasn't up to par," reminds Coach Abe Martin. "I think Ball is the best defensive end here since Bubba

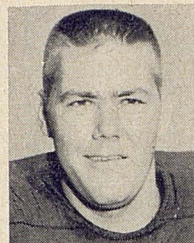
Meyer on our 1958-59 championship teams" . . . he has the defensive reputation, and the lad's offense seems to improve with each practice, as Joe is a top blocker, and above-average receiver . . . led freshmen receivers in 1962 with 15 for 155 yards, but didn't catch one last fall . . . tough, dependable and aggressive, this lad could have a big year . . . was all-round athlete at Graham High School.



**63 HARVEY REEVES, 5-9, 188, 2L, senior.** "When you see or hear a good hard, tough lick, it's usually Harvey who got it," reminds Coach Abe Martin . . . this short, stocky youngster hits with authority from the important linebacker post, where he has been a spring standout the past three years . . . thus, the "Lil Pony" will start his final season

with his defense ahead of his offense . . . despite lack of height and overall speed, this lad makes up for a lot with his hard-nosed, aggressive play . . . has some valuable experience, as having played quite a bit the past two seasons . . . was a top all-round player for Port Arthur High, and this youngster figures to be in some big plays in 1964.

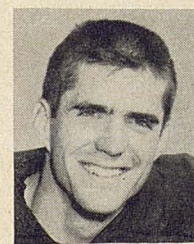
**11 KENT NIX, 6-2, 184, 1L, junior.** Blessed with an outstanding arm, this youngster is expected to split time with Randy Howard at the important up-back post . . . easily the best passer on the squad, and his coach, Abe Martin, feels the former Corpus Christi Ray all-state star could develop into one of the finest chunkers TCU has had in some time . . . "Kent showed a lot of improvement this spring," says Martin. "He seems a little more mature over a year ago. And his arm is a great one. He will help us, I'm sure." . . . Nix had the fans buzzing his freshman year in 1962, when he posted an all-time TCU frosh passing mark, hitting 54 of 112 passes for 685 yards and 3 TDs . . . in his first Wog game, he connected on 18 of 29 for 192 yards and 3 TDs against Texas A&M . . . many thought the handsome youngster would be red-shirted in 1963, but an injury to Randy Howard brought the fellow into view . . . top day was in the SMU victory, when he hit 6 of 8 for 98 yards, one a 32-yard TD heave . . . but in finale against Rice, everything seemed to go wrong, as he had six intercepted . . . lack of speed is main handicap, and this means trouble at times when rushed . . . son of Emery Nix, the Frogs' great passing star of 1941 . . . Emery threw that historic pass that upset Texas, 14-7, in the final 8 seconds, and then set a Frog record in the Baylor game, that still stands, with his 10 of 26 for 337 net yards . . . a lot of potential here, especially in Kent's fine arm.



**81 LARRY PERRY, 6-1, 175, 1L, junior.** Should be outstanding receiver on 1964 squad . . . only average size, but his blocking at times amazes folks . . . one of the most conscientious on squad . . . "One blessed with fine pair of hands and a fiery spirit," says Coach Abe Martin . . . owns good moves in secondary . . . will be used a lot at split-end . . . as frosh star, grabbed 13 for 179 and TD . . . last fall, saw only 73 minutes, but had best day against Texas, catching four of Kent Nix's tosses for 34 yards late in game . . . was also top baseball star at Dallas South Oak Cliff . . . is tabbed for a top offensive year this fall.

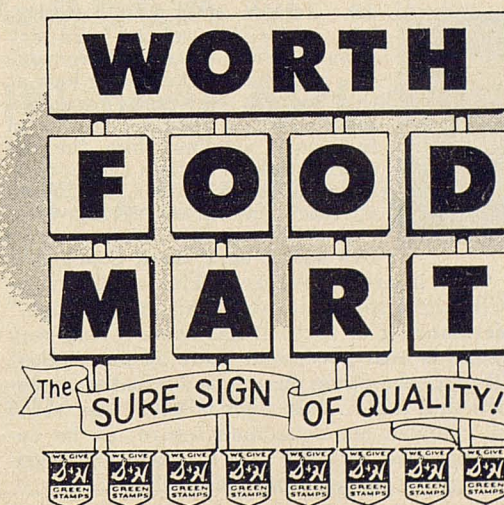


**18 DAN JONES, 6-2, 178, 1L, junior.** One of the finest all-round backs on Purple squad . . . a fine runner, who hasn't much power, but uses his fine speed and balance to his advantage . . . the top-ranking Purple athlete academically, the former Fort Worth Carter star athlete is "heads" up on his grid play, too . . . played nearly all defense last fall, where he had one int. return of 43 for score against Texas Tech . . . if Jim Fauver holds up at the top HB spot this fall, then Dan may return to full-time duty as the safety in the secondary . . . was named Fort Worth's top schoolboy athlete in 1961, then as Wog, made top unit, before suffering a broken right arm in second game against North Texas State frosh . . . arm seemed healed in spring, though he had to miss baseball . . . carried the ball but once last fall, gaining one yard, but offense returned to form in spring . . . is married.



# FINEST

Your family can depend on meats purchased at your friendly Worth Food Mart. Rigid quality control on every item in Worth Food Mart is your assurance of the best at every-day low prices.





# THE TOP FROGS



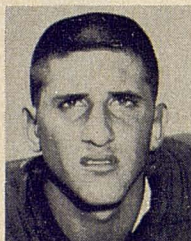
**76 BOBBY SMITH, 6-2, 209, 1L, senior.** One of the more experienced linemen on team . . . picked up a lot on offense during 1963, and then really came forth as a fine all-round tackle in spring drills . . . just missed a letter in 1962, having around 50 minutes of play . . . top size and agility receives Class A grading from Purple staff . . . "I look for a good year from this fellow this

fall," says Head Coach Abe Martin. "His spring work was real good, in fact, outstanding at times." . . . Was everyone's all-state tackle while in high school at San Antonio Burbank . . . is married.



**69 RUSSELL STOUT, 6-0, 196, 1L, junior.** Like Harvey Reeves, this youngster likes to rock and sock folks . . . used only at line-backer in 1963, Coach Abe Martin feels the former Port Arthur end star is ready for offensive duty . . . however, he and Reeves appear to be the best Purple line-backers after spring work, so Stout could be used as a defensive specialist again this year . . .

tough and aggressive, he could use more mobility to be top all-round guard . . . his play could depend a lot on any Frog success this fall . . . has many possibilities.



**19 FRANK HORAK, 6-0, 178, FL, sophomore.** One of few sophomores who will see top duty in 1964 . . . slated for starting work at the important safety spot on defense . . . former all-district star, who has the speed to make the big play . . . Abe Martin and staff had plaudits for the overall work of this tough youngster in both spring training and fall sessions . . . a fine open-field tack-

ler . . . one who could make the defensive losses from 1963 seem a little lighter, if he continues to show same improvement . . . fine sophomore.



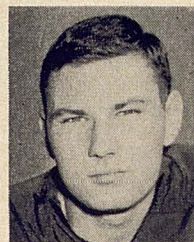
**40 JOHN HULSE, 6-0, 174, 2Sq, junior.** One of the hard-luck guys on Frog team . . . everyone was anxious to take a long look at this former Newcastle ace last season, but a shoulder injury in fall work sidelined him for the entire season . . . then this spring, he rehurt the shoulder, and it was operated on during spring work . . . "One of the quickest arms I've seen," says Head Coach Abe

Martin. "But injuries have kept him on the sidelines. Still might see some work this fall, though." . . . Understanding of football has come a long way . . . defense is real good, and there is top chance, John will spell the other quarterbacks in the secondary some this fall . . . as soph in 1962, was voted the most valuable non-squadman award, as he enjoyed top practice sessions . . . his rifle and accurate arm may be turned loose this fall.

**78 ADON SITRA, 5-11, 197, 1Sq, sophomore.** Lack of height seems only handicap, as this lad owns fine speed and ability, and enjoys the tough, aggressive play . . . "Adon gave me a shot in the arm this spring—he made some moves, especially his ability to recover, and get away from the offensive charge while on defense." . . . Nicknamed the "Duck," Sitra did have a top spring at his new tackle slot . . . at the moment, defense ahead of the offense . . . was all-state guard at Austin McCallum . . . watch this lad.



**91 BRUCE ALFORD, JR., 6-0, 176, FL, sophomore.** One of the finest place kickers to enroll at TCU . . . had an amazing streak at Fort Worth Paschal, where he made all-district honors, and continued his top kicking with Wogs last fall . . . including high school (32 of 32) and as freshman (4 of 4) has made 36 in a row . . . actually missed one his junior year, so has 64 of his last 65 attempts . . . also kicks the field goal, booting two last year . . . will also handle the kickoff chores for the Frogs . . . dad, Bruce, Sr., was TCU all-SWC end in 1941-42, captain and most valuable player in 1942 and later a pro grid star with the old New York Yanks . . . this lad is certain to join the list of all-time Purple toemen.



**85 CHARLES CAMPBELL, 6-2, 196, 1Sq, sophomore.** "Sonny," as tagged by teammates and coaches, had another terrific spring session this year . . . in spring finale, made some unbelievable catches for long yardage . . . probably best on squad at moves to get open . . . as a 1962 freshman, caught two TDs (one a 44-yarder against Texas) among his 7 for 141 yards . . . defense is only fair, but expected to improve with time . . . could be used for much "spot" duty this fall . . . tough and has great hands . . . former Fort Worth Haltom all-district star . . . dad is ad executive with Fort Worth Star-Telegram.



**88 DARRELL MOTT, 5-11, 169, 2L, senior.** The most experienced end on team, this youngster is one of the top defensive wingmen in League . . . size has been disadvantage at times, but quickness usually wins over the opponent . . . like Larry Perry and Charles Campbell, he is a fiery competitor . . . has played mostly defense at TCU as has only two receptions for 12 yards, both last fall . . . was a great all-round athlete at Taylor High School, winning all-state end honors . . . played 100 minutes in 1962; 141 last year . . . another who makes end a bright spot for the Frogs in 1964.



## C & S SPORTING GOODS COMPANY

— THE HOUSE OF SERVICE —

JIM REYNOLDS

OMAR KEETON

FRANK GASCA

ALVIN MCFARLAND

BILL WEAVER

1660 UNIVERSITY DRIVE

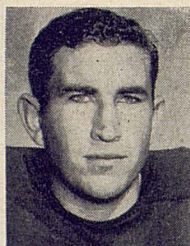
PHONE ED 2-7139 OR ED 2-9826



# THE TOP FROGS

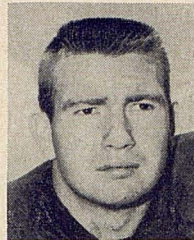


**70 RICHARD SULLIVAN**, 6-0, 212, 2Sq, junior. Another blessed with physical ability to be a fine tackle . . . owns top speed, quickness and overall ability that a coach wants in a lineman . . . "Sullivan has matured a lot, and showed the staff in spring work, he could be ready for business this fall," reminds Coach Abe Martin . . . enjoyed a top freshman year in 1961 . . . then rib injury cut short his spring work, and he missed the 1962 season . . . saw only 30 minutes play last season . . . was state shot put champion at Whitney High . . . if comes through, could give Purple needed relief at this spot.



**61 GARY COOPER**, 6-0, 209, 1L, junior. Came along fast in 1963, after not given much chance before the season . . . in fact, his defensive play was rated solid at end of the campaign . . . continued same pace in spring session, and seemed to improve in every way . . . staff actually feels this lad could make some other first-teams in League, thus, making the spot with Steve Garmon a strong one-two punch for the Purple . . . has good understanding of football, and if offense shows some improvement in fall drills, then look for a top job again in 1964 . . . former Everman all-district fullback.

**82 DOYLE JOHNSON**, 6-2, 199, 1Sq, sophomore. A red-shirt in 1963, this tough youngster made a top bid in spring work . . . defense right now a little ahead of offense, but all believe he could be a good one in time . . . former all-state end at Galena Park High, where he made defense a by-word . . . caught two passes for 29 yards as 1962 freshman . . . rangy and rugged, one with a good future at TCU.



**67 BILLY SNOW**, 6-1, 206, 2Sq, junior. Frog staff has waited a long time for this youngster . . . sidelined via scholastic difficulties the past two years, this natural football player could bounce back in a big way this fall . . . star of both the 1962-63 spring drills, play seemed a little ragged this past spring . . . coaches say this lad has the agility and ability to be a top pulling guard, and has the knack of making the big block . . . could develop into the No. 1 offensive guard in fall work . . . also above-average at linebacker, where he's tabbed a top tackler . . . former Fort Worth Arlington Heights star . . . many feel this lad has the equipment to solve a lot of problems before he's through at TCU . . . a long wait, but one that could be well worth it.



## THE HOUSE OF MOLÉ

PRESENTS

CHICKEN  
RIBS **MOLÉ**  
THAT SALAD!

Fort Worth's Most Unique Restaurant

Your Host:  
HOWIE WRENTMORE

C  
H  
O  
P  
S  
  
S  
T  
E  
A  
K  
S  
  
B  
R  
O  
I  
L  
E  
D  
  
C  
H  
A  
R  
C  
O  
A  
L

2200 PARK HILL DRIVE  
Open 5 PM to 11 PM Daily  
WA 1-1682

## SAMPLEY'S T. C. U. "Frogs" CLEANERS

W. S. SAMPLEY, Prop.

"Where Better Cleaning is Done"

LAUNDRY SERVICE

Plant: 3007 University Dr. - - - Ph. WA 4-4196  
Sub-Station: 2911 W. Berry - - - Ph. WA 4-2516  
Sub-Station: 4626 Granbury Rd. - Ph. WA 1-1121  
Sub-Station: 3012 Vaughn - - - - Ph. JE 5-9493



## Weldon's Flowers

Wear a "Mum" to  
the Game

**ED 6-4444**

Flowers Are "Well Done"

The Sign of  
Good Insurance



Since 1889

HERMAN GARTNER  
W. J. BLOUNT  
W. W. TAYLOR  
FRANK L. THOMPSON  
GEORGE GARTNER  
D. W. SWEENEY  
W. J. BLOUNT, JR.  
JOHN A. MAXWELL  
ORVILLE NEAL  
ROBERT McFAIL  
C. B. SMITH  
JOHN POLK  
DELBERT W. TUCKER  
E. L. MOORE

Associates: Bryan Ingram, Skip Few

1407 TEXAS AT SUMMIT

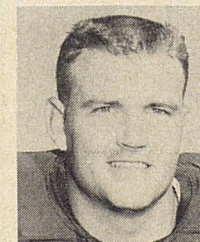
Fort Worth, Texas

# THE TOP FROGS



**57 JIM NAYFA**, 6-3, 239, 1Sq, sophomore. The "Buffalo" as is called by all, could enjoy a fine first season this fall, especially on offense . . . can make the big block . . . size and strength big assets for this lad, who won all-district honors at Fort Worth Paschal . . . enjoyed a fine spring, though it was apparent he could use more quickness . . . gives Purple a top replacement for Ken Henson, as is hard worker and wants to learn . . . in time, could become a starter before he's through at TCU.

**34 ERNEST BAYER**, 6-1, 200, 1L, junior. A tough, dedicated runner who runs low and hard . . . doesn't have any speed, but seems to make his yards . . . "This guy likes the game of football," brags Coach Abe Martin . . . is rated fine linebacker, and made some fine plays here in 1963 . . . led 1962 Wogs with 3.9 average on 34 tries . . . didn't see much offense last fall, but was running in fine form in spring . . . a consistent short gainer, he should make a top relief here . . . former all-district pick at Cameron High.



**41 CARROLL DUBOSE**, 6-0, 199, 1L, junior. Had a fine season last fall, playing most of time behind all-America Tom Crutcher . . . not rated a power runner, he seems to glide into the line, and picks his holes well . . . also above-average at linebacker, and is particularly strong against the pass . . . a converted quarterback, had a 69-yard scoring dash against SMU as freshman . . . best running day in 1963 was 33 net yards in SMU game . . . this lad is good insurance at the deep slot this fall, and he could go even higher without much surprise . . . is called "Biddy" by teammates.

**84 BILL BOWERS**, 6-5, 219, 2L, senior. A top offensive performer, whose size and range make him a top pass target . . . lack of speed is main handicap . . . has been alternate end past two seasons, with best game as starter against Rice in 1962, catching 4 for 64, including nifty TD grabs of 4 and 37 yards . . . was both quarterback and end at Fort Worth Carter, where also was front-line cage star . . . as soph, caught 6 for 93, and last season, had 4 for 44 including the amazing end zone TD catch against SMU . . . definitely a "spot" player for 1964.



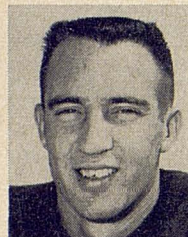


# THE TOP FROGS



**48 BOBBY BATTON**, 6-1, 174, 1L, junior. Another who can catch the football, and could be a top hand at his new spot this fall... doesn't have great speed, but owns quick moves and good balance... had a second-straight good spring... had big day against SMU, catching a 32-yard pass for TD... Bobby was hit with a fever his freshman season, and had to drop out of school...

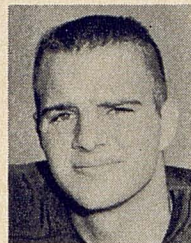
while at Hubbard High, had some great moments as a runner... is married.



**25 GENE UPTEGRAPH**, 6-3 179, 1Sq, sophomore. A holdout in 1963, this lad came to front this spring... tall, lanky, Gene owns fine hands... fine size makes him top target for passers... was all-district choice at San Benito High... starter as freshman in 1962, snaring 13 passes for 167 yards and TD... defense also got raves, and could be used here some in 1964... one of the

better newcomers expected to make his mark this fall... also sprinter in track.

**80 JOE SHERRELL**, 6-1, 189, FL, sophomore. One who likes aggressive defensive play... came along fast in spring work, and is expected to help Purple on defense this season... Coach Abe Martin bubbles over this youngster's size and strength, and sees a bright future here... a top competitor... a fine all-round athlete at Irving High School... this lad could be somebody... led Frosh receivers with 9 for 130 and one TD.



**72 RONNIE NIXON**, 6-1, 209, 1Sq, sophomore. A converted full-back, who moved to new spot midway through spring drills... "I have high hopes for a good tackle here," exclaimed Coach Abe Martin... blessed with above average speed for interior lineman, but this was a shortcoming as a full-back... highly-sought high school star at Houston Milby, where he also rocked folks from linebacker... conscientious, aggressive and wants to learn his new assignment... could help this fall.



Compliments

★ ★ ★

## THOS. S. BYRNE, INC.

ENGINEERS AND GENERAL CONTRACTORS

★ ★ ★

FORT WORTH, TEXAS

Telephone ED 5-3406

Compliments of

### BARRON McCULLOCH & CO.

INVESTMENT SECURITIES

STOCKS - BONDS



100 W. Seventh

Fort Worth 2, Texas



1220 Pennsylvania • ED 2-2265  
6200 Camp Bowie • PE 8-9288

## MRS. GRUBBS POTATO CHIPS



• CORNIES

• PIGSKINS

• PEANUTS

• PECANS

FINE EATING — ANYTIME

FORT WORTH, TEXAS

3565 McCART STREET

## The Blackstone Hotel

FORT WORTH'S "HOTEL OF DISTINCTION"

INTERNATIONAL ROOM — PRIVATE CLUBS — POOL IN THE SKY

20 to 300 Seating Capacity for  
Private Breakfasts, Luncheons, Dinners, Meetings and Conventions

Telephone EDison 5-4381 — 601 Main Street

FREE PARKING FOR GUESTS

CHARLES A. PARISEAU, Gen. Mgr.



# THE TOP FROGS



**71 HARRY LANTZ**, 6-2, 206, 1Sq, sophomore. Blessed with desire, speed and size, this lad could become outstanding before he's finished at TCU . . . missed most of spring work with a knee operation, having a cartilage removed . . . was top high school player at Donna, where Norman Evans was the other tackle when Harry was a junior. "With time, I don't see how Harry can miss,"

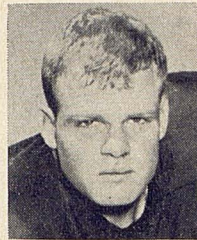
Coach Abe Martin said . . . aggressive, tough and likes the game of football.



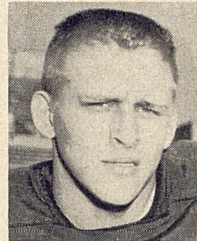
**53 BOBBY NELSON**, 6-0, 190, FL, sophomore. One of the big stars of the 1963 freshmen, especially on defense, where he made sensational plays from linebacker . . . one, who tackles well, and has the quickness to make the big play . . . suffered head injury in Texas frosh game, and seemed to be slowed some this spring . . . still, the Frog staff sees a fine linebacker prospect, one who could

break into the top defense in 1964 . . . "Bobby's battle makes up for his size," says Coach Abe Martin . . . was top all-district star at Fort Worth Haltom . . . watch this lad.

**33 DAVID SMITH**, 6-0, 198, 1Sq, sophomore. Blessed with top balance and speed, this husky Fort Worth Carter ex-star could help the Frogs at either halfback or fullback in the new Dual offense this fall . . . enjoyed top fall drills at both spots . . . strong and quick runner, has troubles at times holding on to ball . . . this lad could be a big surprise to Frog fans in 1964.



**27 CUBBY HUDLER**, 5-10, 160, FL, sophomore. Fine all-round back from freshman team, where he seemed to do everything well . . . was near unanimous all-SWC freshman HB choice . . . having good all-round speed, this tough youngster made headlines while a three-year performer at Victoria High . . . was the No. 3 Wog ground gainer, and enjoyed best night in opener against Texas A&M Fish, where he also had top defensive game . . . in fact, may get some top duty at the important secondary this fall . . . quick and aggressive, looks like a good future here for this lad.



FOLLOW THE FROGS IN 1964!

## Slim Steadman Sporting Goods

"House of Experience"

2410 Forest Park Blvd. WA 4-1291

## MR. QUICK DRIVE INS Home of the 15c Char Broiled Hamburgers

— 3 Convenient Locations —

1501 E. Berry 1908 E. Lancaster  
2832 W. 7th St.

Neatness Denotes Pride

## JET CLEANERS & LAUNDRY

Jess Norris - Owner

Across from Campus

Complete  
Sports Equipment



2704 W. Berry

WA 3-0817

Open 9-6

Buick  
&  
Buick



We changed the Buick a lot this year. And you may never be the same again yourself.

We doubt you'll want to be the same. Not once you set eyes on our new Buicks. On the Buick Special and the Skylark. The LeSabre, Electra 225, Riviera. And on the sleek, modified fastback of the wild, wilder, Wildcat in the picture. True, there's a new high-style touch. But that's hardly all. Engineering still has the emphasis. It's a Buick tradition. So are the extras Buick spends a little extra on. Like brakes that do a little better. And smoother drivelines. A tuned suspension to smooth ribcage roads. Now add Buick's Super Turbine transmissions—and you have an idea of what Buick owners have always liked about Buick. We think you'll feel the same.



Wouldn't you really rather have a Buick?





DR. JAMES M. MOUDY  
Executive Vice Chancellor

## TCU Begins 92nd Session

Texas Christian University, which opened its doors to 13 students as "AddRan Male and Female College" in the fall of 1873, registered some 7,300 persons from all 50 states and 30 foreign lands Sept. 14-16 as it moved into its 92nd session.

Marking the second year of the ninth decade of West Texas' oldest institution of higher learning will be a number of developments:

1) Six new buildings, five dormitories and a dining hall costing \$4,500,000, will go into service. They bring to 34 the number of buildings erected, renovated and/or enlarged or acquired since 1942.

2) An IBM 1401 computer, supplementing the university's 1620 system, goes into operation.

3) The new Honors Program moves into its third year and first graduates with "University Honors" are due next spring.

4) Five Doctor of Philosophy degree programs—in physics, psychology, mathematics, English and chemistry—will be in full operation with a sixth area, history, to be added in the near future. So far, 11 doctorates have been awarded over the last year.

5) In an administrative change, Dr. James M. Moudy becomes executive vice-chancellor after serving as dean of the Graduate School and vice-chancellor for academic affairs.

6) Thirty-nine new fulltime faculty members, many with outstanding records, join the teaching force.

7) A number of new programs, including a five-year study of perceptually handicapped children by the new Neeley Center and a division to promote the study of the history of the U. S. free enterprise system, will begin.

8) More than 30 research projects ranging from perception in space to rare chemical compounds will continue under grants totaling some \$1,000,000.

Negro students are enrolled in all university divisions as they were during the spring semester. Approximately a dozen are in the undergraduate colleges with others in Graduate School and Evening College.

Graduate School is again expected to be the fastest growing division. With 1,243 students, it had an increase of some 25 per cent last school year. Evening College was up 12 per cent last year.

A new "Special Courses" division, which will have supervision of all seminars, workshops and institutes on campus, will be under the direction of Dr. Howard G. Wible. A large number of such special events is planned.

Dr. M. E. Sadler, who became the TCU president in 1941, is now in his 24th year. He was made chancellor and continued as chief executive officer in 1959.



## FORT WORTH'S SPORTS SPECTACULARS

★ T.C.U. *fighting frogs*

★\* COLONIAL NATIONAL  
INVITATION

\* Golf Tournament Held in May

\* Tennis Tournament Held in Sept.

*See the Greatest Names In  
Golf and Tennis At...*

**COLONIAL COUNTRY CLUB**

*Enjoy The New*

## ABE MARTIN SHOW

EVERY SUNDAY AFTERNOON

4 P. M.

ON

**WBAP-TV Channel 5**

*Brought to You in Living Color*



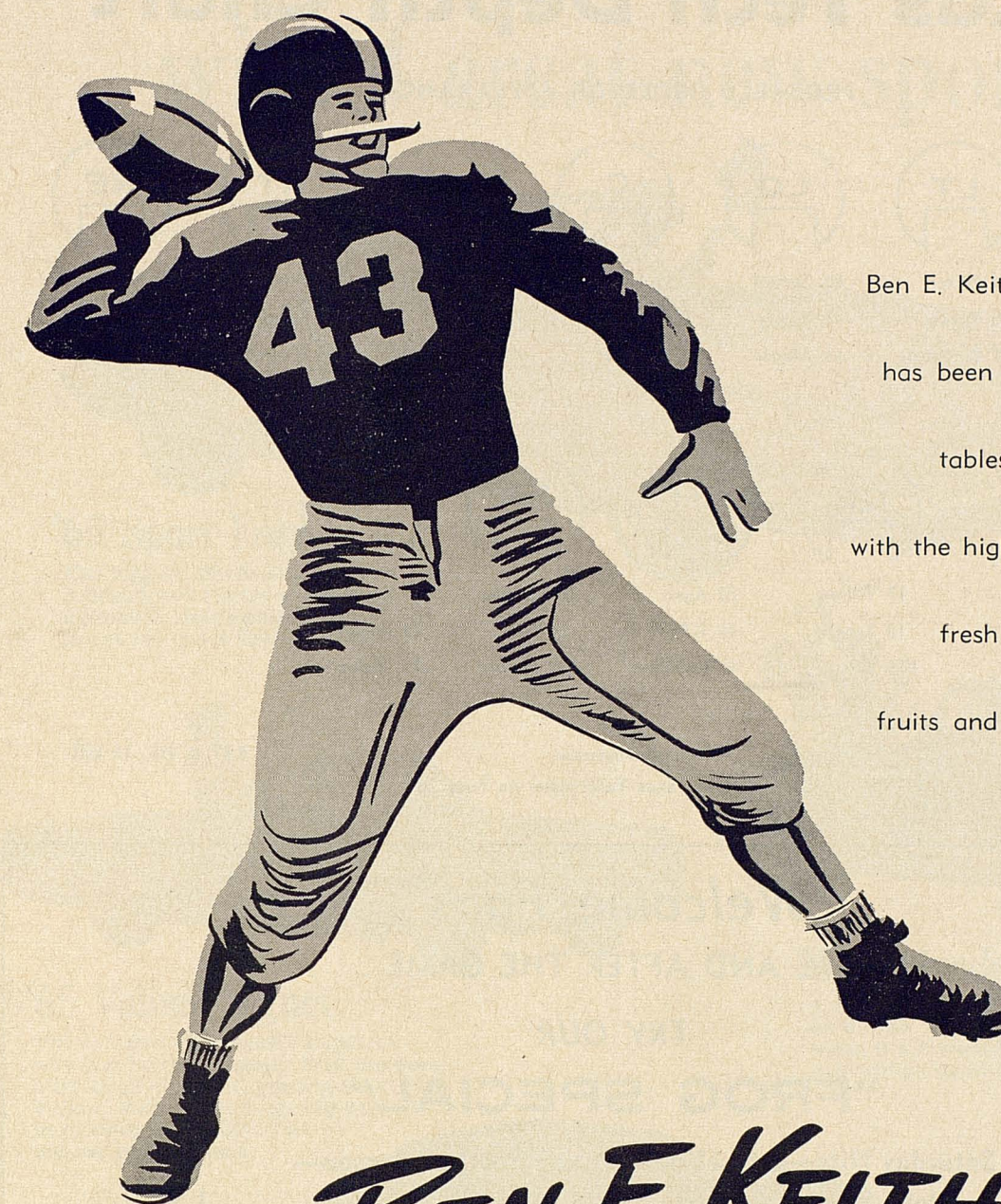
# RED RAIDER ROSTER

(Numerical)						
No.	Name	Pos.	Wt.	Ht.	Age	#Class-Exp. Hometown
10	Teddy Roberts	QB	170	5-11	21	Sr-1L Gulfport, Miss.
13	Tom Wilson	QB	160	6-0	20	Jr-Sq Corsicana
15	James Ellis	QB	187	6-1	21	Sr-1L Lubbock
17	Guy Griffis	QB	185	6-0	20	Soph-FN Dallas
18	Ben Elledge	QB	189	6-1	21	Jr-1L Brownwood
20	Johnny Agan	HB	182	5-11	21	Jr-1L Albany
22	Corky Klaerner	FB	200	5-11	20	Soph-Sq Fredericksburg
23	David Baugh	HB	175	6-0	20	Soph-Sq Rotan
24	Jimmy Edwards	HB	175	5-11	20	Soph-Sq Royse City
25	Billy Weise	HB	169	5-10	20	Jr-1L Austin
29	Richard Perry	KS	170	5-9	21	Sr-O Hobbs, N. M.
31	Jim Zanios	FB	210	6-0	21	Sr-2L Albuquerque, N.M.
32	Charles Graham	FB	195	5-11	20	Jr-1L Longview
33	Leo Lowery	FB	210	6-1	21	Jr-1L Lovington, N. M.
34	Kenneth Gill	FB	195	6-2	21	Jr-1L McKinney
41	Jerry Lovelace	HB	191	6-0	21	Soph-Sq Farwell
44	Donny Anderson	HB	200	6-3	19	Jr-1L Stinnett
45	Dennis Tucker	FB	187	6-0	20	Soph-Sq Albany
49	Robert Yancer	HB	178	6-0	20	Jr-1L Arlington
50	Reg Scarborough	C	199	6-1	21	Sr-2L Snyder
51	Butch Thompson	C	190	5-11	21	Sr-2L Lubbock
52	C. C. Willis	C	198	6-1	21	Sr-2L Bay City
53	Robert Lancaster	C	189	5-11	21	Jr-Sq Bowie
54	Bob Fuller	C	205	6-0	21	Jr-JC Glendale, Cal.
60	Ray Garrett	G	210	6-0	20	Jr-1L Odessa
61	Elmo Ahrens	G	205	6-0	19	Soph-FN Fredericksburg
62	Doug Young	G	185	5-11	19	Soph-FN Brownwood
63	Mickey Merritt	G	220	6-0	18	Soph-FN Springhill, La.
64	James Cecil	G	193	5-11	21	Jr-JC Sugarland
65	Chester Howard	T	215	6-1	21	Jr-Sq Longview
66	James Henkel	G	210	6-1	19	Soph-FN Corsicana
68	Marc Bryant	G	215	5-11	20	Soph-Sq Waco
69	John Avent	G	206	5-11	19	Soph-FN San Antonio
70	Ronnie Pack	T	224	6-2	19	Soph-FN Odessa
71	Wayne Barginear	T	225	6-4	21	Jr-JC Richmond
72	Stanley Edwards	T	215	6-4	18	Soph-FN Dallas
73	Jesse Pruitt	T	220	6-2	20	Soph-FN Glen Rose
74	John Porter	T	225	5-11	20	Jr-1L Lamesa
75	Bill Adams	T	225	6-4	19	Soph-FN Hobbs, N. M.
76	Bill Malone	T	240	6-3	21	Sr-2L Phillips
77	John Carrell	T	210	6-2	21	Jr-1L Lovington, N. M.
78	Ronnie Reeger	T	208	6-1	21	Sr-2L Merkel
79	Roy Brown	T	235	6-2	20	Soph-Sq Carlsbad, N. M.
80	Tommy Doyle	E	198	6-1	21	Sr-1L Lamesa
81	Jeff White	E	185	6-3	21	Jr-JC Burbank, Cal.
82	Charles Gladson	E	195	6-2	21	Sr-2L Snyder
83	Joe Hurley	E	190	5-11	19	Soph-FN Midland
84	Jerry Shipley	E	188	6-0	19	Jr-Sq Lubbock
85	Clyde Windom	E	190	6-3	20	Soph-Sq McLean
86	Jerry Don Balch	E	197	6-1	21	Sr-2L Lubbock
87	Terry McWhorter	E	185	6-1	19	Soph-Sq Perryton
88	Hal Hudson	E	186	5-11	20	Jr-1L Earh
89	Sam Cornelius	E	181	6-1	21	Sr-1L Spearman

LEGEND: #Denotes eligibility in football; L—varsity letter; Sq—varsity squad; FN—freshman letter.

❖ "OFFICIAL WATCH FOR THIS GAME — LONGINES — THE WORLD'S MOST HONORED WATCH" ❖

Represented for National Advertising by SPENCER ADVERTISING COMPANY, INC., 271 Madison Ave., New York City



**BEN E. KEITH**  
COMPANY



**fresh-from Keith's**

Since 1906  
Ben E. Keith Company  
has been serving the  
tables of Texans  
with the highest quality  
fresh and frozen  
fruits and vegetables.

FORT WORTH • DALLAS • WICHITA FALLS • LUBBOCK • ABILENE • LONGVIEW



# Texas Tech Depth Chart

PROBABLE ORDER OF APPEARANCE

<b>LE</b>	<b>LT</b>	<b>LG</b>	<b>C</b>	<b>RG</b>	<b>RT</b>	<b>RE</b>
86 Balch	74 Porter	60 Garrett	50 Scarborough	64 Cecil	65 Howard	82 Gladson
83 Hurley	78 Reeger	62 Young	52 Willis	68 Bryant	77 Carrell	89 Cornelius
81 White	71 Barginear	61 Ahrens	54 Fuller	66 Henkel	72 S. Edwards	84 Shipley

<b>QB</b>	<b>LH</b>	<b>FB</b>	<b>RH</b>
13 Wilson	20 Agan	31 Zanios	44 Anderson
10 Roberts	24 J. Edwards	34 Gill	23 Baugh
15 Ellis	41 Lovelace	33 Lowery	25 Weise

Kickoffs: 34 Gill

Punter: 44 Anderson

PAT & FG: 34 Gill

(See complete Texas Tech roster on Page 26)

## "Welcome Fans"

BEFORE AND AFTER THE GAME . . .

TRY OUR

## "FROG SPECIAL"

Every Saturday Nite—5 to 11 p.m. During Football Season—

Complete Smorgasbord (you help yourself) . . . 1.50

The  
New **Golden fin**  
SEAFOOD RESTAURANT  
(also Char-broiled Steaks)

1901 Montgomery Street

(2 minutes from Amon Carter Stadium)

Reservations . . . . PE 8-9877

# Plymouth roars into '65 with 4 great new sports!



## '65 Sport Fury

The biggest, plushest Plymouth ever. A brand-new "ultra-everything" Plymouth that's still solidly in the low-price field.



## '65 Valiant Signet

The compact that hasn't forgotten why you buy a compact. Still the best all-around compact, proving that Valiant didn't have to go big-car in price or size to give you big-car performance.



## '65 Belvedere Satellite

A new way to swing without going out on a limb. For the buyer who knows that, when it's Plymouth, pride of ownership can still go hand-in-hand with low price.



## '65 Barracuda Fastback

The fast-moving fastback at a spectacular low price. America's best combination yet of sports-car look, youthful vitality, all-purpose versatility, and all-around economy.

Get your free copy of the NCAA Football Almanac at your nearest participating Plymouth Dealer's.

THE ROARING '65s  
FURY  
BELVEDERE  
VALIANT  
BARRACUDA  
**Plymouth**

PLYMOUTH DIVISION  CHRYSLER  
MOTORS CORPORATION





things go  
better  
with  
**Coke**



TCU

10 — 0

PROBABLE OFFENSIVE LINEUP

No.	Name	Position
85	CHAS. CAMPBELL	TE
73	NORMAN EVANS	TT
67	BILLY SNOW	TG
51	KEN HENSON	C
60	STEVE GARMON	PG
76	BOBBY SMITH	PT
86	JOE BALL	PE
11	KENT NIX	QB
21	JIM FAUVER	HB
48	BOBBY BATTON	WB
26	LARRY BULAICH	FB

THE HORNFROG SQUAD

10 Howard, QB	27 Hudler, HB	60 Garmon, PG	77 Phillips, PT
11 Nix, QB	33 D. Smith, HB	61 G. Cooper, PG	78 Sitra, PT
12 Westbrook, HB	34 Bayer, FB	62 Gilliam, PG	79 Clore, PT
14 Richards, WB	38 Defee, FB	63 Reeves, TG	80 Sherrell, TE
15 Hennessee, QB	40 Hulse, QB	65 Williams, PG	81 Perry, TE
18 Jones, HB	41 DuBose, FB	67 Snow, TG	82 Johnson, PE
19 Horak, WB	46 Cannaday, QB	69 Stout, TG	84 Bowers, PE
21 Fauver, HB	48 Batton, WB	70 Sullivan, TT	85 Campbell, TE
22 Sanders, WB	51 Henson, C	71 Lantz, TT	86 Ball, PE
23 Duffey, HB	52 Carter, C	72 Nixon, TT	87 Hughey, TE
24 P. Smith, WB	53 Nelson, C	73 Evans, TT	88 Mott, TE
25 Uptegraph, WB	54 Lester, TG	75 R. Cooper, PT	91 Alford, PE
26 Bulaich, FB	57 Nayfa, C	76 B. Smith, PT	

TEXAS TECH

6 — 19 = 25

THE RED RAIDER SQUAD

PROBABLE OFFENSIVE LINEUP

No.	Name	Position
86	JERRY DON BALCH	LE
74	JOHN PORTER	LT
60	RAY GARRETT	LG
50	REG SCARBOROUGH	C
64	JAMES CECIL	RG
65	CHESTER HOWARD	RT
82	CHARLES GLADSON	RE
13	TOM WILSON	QB
20	JOHNNY AGAN	LH
44	DON ANDERSON	RH
31	JIM ZANIOS	FB

10 Roberts, QB	34 Gill, FB	63 Merritt, G	77 Carrell, T
13 Wilson, QB	41 Lovelace, HB	64 Cecil, G	78 Reeger, T
15 Ellis, QB	44 Anderson, HB	65 Howard, T	79 Brown, T
17 Griffis, QB	45 Tucker, HB	66 Henkel, G	80 Doyle, E
18 Elledge, QB	49 Yancer, HB	68 Bryant, G	81 White, E
20 Agan, HB	50 Scarborough, C	69 Avent, G	82 Gladson, E
22 Klaerner, HB	51 Thompson, C	70 Pack, T	83 Hurley, E
23 Baugh, HB	52 Willis, C	71 Barginear, T	84 Shipley, E
24 J. Edwards, HB	53 Lancaster, C	72 S. Edwards, T	85 Windom, E
25 Weise, HB	54 Fuller, C	73 Pruitt, T	86 Balch, E
29 Perry, KS	60 Garrett, G	74 Porter, T	87 McWhorter, E
31 Zanios, FB	61 Ahrens, G	75 Adams, T	88 Hudson, E
32 Graham, FB	62 Young, G	76 Malone, T	89 Cornelius, E
33 Lowery, FB			

OFFICIALS

Referee: Curly Hays  
Head Linesman: Bubba Gernand

Umpire: John Hart  
Field Judge: Robert Gary

Back Judge: Gilly Davis  
Electric Clock Operator: Bill Boswell





# Hotnew!

Dodge at a  
new lower price.  
Coronet '65.  
Bigger? Than the both  
of them: Chevelle and  
Fairlane. In wheelbase. In power.  
Inside.  
Buckets.  
Bomb.  
Bonus.  
Check the price.  
Surprise again. Right  
down with the little ones.  
It figures. It comes from  
Dodge.  
And Dodge comes on big  
for 1965.

## '65 Dodge Coronet

DODGE COMES ON BIG FOR '65 • DART • CORONET • POLARA • CUSTOM 880 • MONACO



# TCU DEPTH CHART

PROBABLE ORDER OF APPEARANCE

TE	TT	TG	C	PG	PT	PE
85 Campbell	73 Evans	67 Snow	51 Henson	60 Garmon	76 B. Smith	86 Ball
81 Perry	70 Sullivan	63 Reeves	57 Nayfa	61 G. Cooper	78 Sitra	82 Johnson
88 Mott	72 Nixon	69 Stout	52 Carter	65 Williams	77 Phillips	84 Bowers

QB	HB	FB	WB
11 Nix	21 Fauver	26 Bulaich	48 Batton
10 Howard	18 Jones	34 Bayer	22 Sanders
40 Hulse	33 D. Smith	41 DuBose	25 G. Uptegraph

KO, PAT, FG: 91 Alford

Punter: Fauver

Defense: 14 Richards, 19 Horak, 53 Nelson

(See complete TCU roster on Page 35)

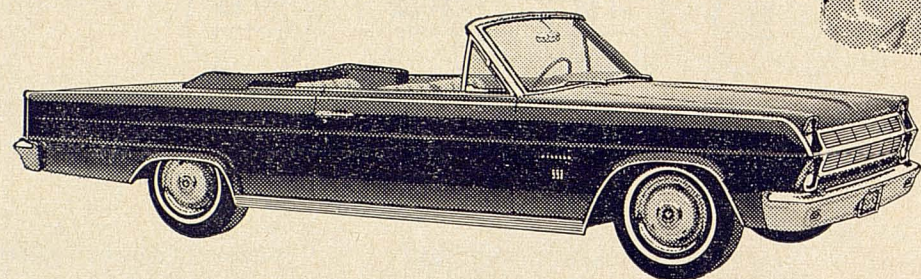
# HIGH SCHOOL GAME OF THE WEEK

FRIDAYS **KFJZ** 7:25 PM  
RADIO  
1270

BILL ENIS • Play by Play



# SURPRISE CARS of '65 RAMBLER



SEE 'EM  
DRIVE 'EM  
BUY 'EM

AT  
SOUTHWEST LEADING  
RAMBLER DEALER



811 SO. UNIVERSITY DR. ED 5-4835  
BANK RATE FINANCING



## HORNED FROG ROSTER

(NUMERICAL)								
No.	Name	Pos.	Wt.	Ht.	Age	# Class-Exp.	Hometown (School)	High School Coach
10	Randy Howard	QB	175	5-11	21	Sr-1L	Dawson	Edd Burleson
11	Kent Nix	QB	184	6-2	20	Jr-1L	Corpus Christi (Ray)	Bill Stages
12	Richard Westbrook	HB	183	6-1	20	Soph-1-Sq	Thorndale	Evan Weaver
14	John Richards	WB	175	6-0	19	Soph-FN	Ft. Worth (Arl. Hts.)	Homer Ludiker
15	Gary Hennessee	QB	170	6-0	19	Soph-FN	Meridian	Reg Reynolds
18	Dan Jones	HB	172	6-2	20	Jr-1L	Ft. Worth (Carter)	Buster Dixon
19	Frank Horak	WB	178	6-0	19	Soph-FN	Caldwell	Morris Stone
21	Jim Fauver	HB	185	5-10	21	Sr-2L	Houston (Milby)	Gil Bartosh
22	Bobby Sanders	WB	167	5-10	21	Sr-2L	Ft. Worth (Paschal)	Bill Allen
23	Jimmy Duffey	HB	165	5-10	19	Soph-FN	Dallas (Kimball)	Bo Campbell
24	Paul Smith	WB	178	6-1	20	Soph-1Sq	Franklin	Joe Headrick
25	Gene Uptegraph	WB	179	6-3	20	Soph-1Sq	San Benito	J. W. Helms
26	Larry Bulaich	FB	197	6-3	20	Sr-2L	LaMarque	Orville Etheridge
27	Cubby Hudler	HB	160	5-10	19	Soph-FN	Victoria	Tom Pruitt
33	David Smith	HB	198	6-0	22	Soph-1Sq	Ft. Worth (Carter)	Buster Dixon
34	Ernest Bayer	FB	200	6-1	20	Jr-1L	Cameron	Billy Bates
38	Bill Defee	FB	190	6-0	19	Soph-FN	Amarillo (Tascosa)	R. M. Patterson
40	John Hulse	QB	174	6-0	21	Jr-2Sq	Newcastle	Johnny Vaughan
41	Carroll DuBose	FB	199	6-0	21	Jr-1L	Devine	Marvin Gustafson
46	Jerry Cannady	QB	173	6-1	20	Soph-1Sq	Pittsburg	Leonard Cannaday
48	Bobby Batton	WB	174	6-1	20	Jr-1L	Hubbard	Jack Schrader
51	Ken Henson	C	245	6-6	21	Sr-2L	San Angelo	Bob Harrell
52	Benny Carter	C	204	6-3	21	Jr-2Sq	McKinney	Charles Qualls
53	Bobby Nelson	C	185	6-0	19	Soph-FN	Ft. Worth (Haltom)	John Hugh Smith
54	Darrell Lester	TG	199	6-2	21	Jr-2Sq	Houston (Bellaire)	Scat Sullivan
57	Jim Nayfa	C	231	6-3	19	Soph-1Sq	Ft. Worth (Paschal)	Bill Allen
60	Steve Garmon	PG	211	6-0	22	Sr-2L	Groom	Weldon Bates
61	Gary Cooper	PG	209	6-0	21	Jr-1L	Everman	Neil Hoskins
62	Butch Gilliam	PG	219	6-0	21	Soph-1Sq	Belton	Cedric Bettis
63	Harvey Reeves	TG	190	5-9	21	Sr-2L	Port Arthur	C. E. Underwood
65	Porter Williams	PG	208	6-0	20	Soph-1Sq	Corpus Christi (Carroll)	Cotton Ashton
67	Billy Snow	TG	201	6-1	21	Jr-2Sq	Ft. Worth (Arl. Hts.)	Homer Ludiker
69	Russell Stout	TG	196	6-0	21	Jr-1L	Port Arthur	C. E. Underwood
70	Richard Sullivan	TT	212	6-0	21	Jr-2Sq	Whitney	Fred Smith
71	Harry Lantz	TT	206	6-2	21	Soph-1Sq	Donna	Earl Scott
72	Ronny Nixon	TT	209	6-1	20	Soph-1Sq	Houston (Milby)	Gil Bartosh
73	Norman Evans	TT	224	6-5	21	Sr-2L	Donna	Earl Scott
75	Ronny Cooper	PT	209	6-4	20	Soph-1Sq	Ft. Worth (Paschal)	Bill Allen
76	Bobby Smith	PT	209	6-2	21	Sr-1L	San Antonio (Burbank)	Roy Wallace
77	Preston Phillips	PT	207	6-4	21	Jr-2Sq	Kerrville	Tom Daniels
78	Adon Sitra	PT	197	5-11	20	Soph-1Sq	Austin (McCallum)	Curtis Shiflet
79	Larry Clore	PT	214	6-4	20	Soph-1Sq	Ft. Worth (Paschal)	Bill Allen
80	Joe Sherrell	TE	189	6-1	19	Soph-FN	Irving	Bob Harrell
81	Larry Perry	TE	175	6-1	20	Jr-1L	Dallas (S. Oak Cliff)	Raymond Mattingly
82	Doyle Johnson	PE	198	6-2	20	Soph-1Sq	Galena Park	Paul Smith
84	Bill Bowers	PE	214	6-5	21	Sr-2L	Ft. Worth (Carter)	Buster Dixon
85	Charles Campbell	TE	196	6-2	20	Soph-1Sq	Ft. Worth (Haltom)	John Hugh Smith
86	Joe Ball	PE	199	6-3	19	Jr-1L	Graham	Roy Curry
87	Jim Hughey	TE	190	6-3	20	Soph-1Sq	Mineral Wells	Glen Johnson
88	Darrell Mott	TE	171	5-11	21	Sr-2L	Taylor	Bill Ford
91	Bruce Alford, Jr.	PE	176	6-0	19	Soph-FN	Ft. Worth (Paschal)	Bill Allen

NOTE: Class designates player's eligibility in football; L—varsity letter; Sq—varsity squad; FN—freshman numeral.

TCU VARSITY COACHING STAFF—Abe Martin, head coach; Allie White, defensive line; Walter Roach, defensive backs; Mal Fowler, offensive backs; Hunter Enis, offense and quarterbacks; Don Jackson, offensive line; Fred Taylor, ends and freshmen.

1964 TCU TRI-CAPTAINS—Tackle Norman Evans, Halfback Jim Fauver and Guard Steve Garmon.

"OFFICIAL WATCH FOR THIS GAME — LONGINES — THE WORLD'S MOST HONORED WATCH"



# PAST RESULTS

## WITH KANSAS

1942-TCU, 41-6	1950-TCU, 14-7	1957-tie, 13-13
1944-TCU, 7-0	1951-Kan., 27-13	1958-TCU, 42-0
1945-TCU, 18-0	1952-Kan., 13-0	1959-TCU, 14-7
1946-tie, 0-0	1953-TCU, 13-0	1960-Kan., 21-7
1947-tie, 0-0	1954-TCU, 27-6	1961-TCU, 17-16
1948-TCU, 14-13	1955-TCU, 47-14	1962-TCU, 6-3
1949-TCU, 28-0	1956-TCU, 32-0	1963-TCU, 10-6

TCU has won 15, Kansas has won 3. Tied 3.

## WITH FLORIDA STATE

1963-TCU, 13-0

## WITH ARKANSAS

1920-TCU, 19-2	1938-TCU, 21-14	1951-TCU, 17-7
1921-TCU, 19-14	1939-Ark., 14-13	1952-TCU, 13-7
1924-Ark., 20-0	1940-TCU, 20-0	1953-Ark., 13-6
1925-TCU, 3-0	1941-TCU, 9-0	1954-Ark., 20-13
1926-TCU, 10-7	1942-TCU, 13-6	1955-TCU, 26-0
1927-Ark., 10-3	1943-TCU, 13-0	1956-TCU, 41-6
1930-TCU, 40-0	1944-tie, 6-6	1957-Ark., 20-7
1931-TCU, 7-0	1945-Ark., 27-14	1958-TCU, 12-7
1932-TCU, 34-12	1946-Ark., 34-14	1959-Ark., 3-0
1933-Ark., 13-0	1947-Ark., 6-0	1960-Ark., 7-0
1934-Ark., 24-10	1948-Ark., 27-14	1961-TCU, 28-3
1935-TCU, 13-7	1949-Ark., 27-7	1962-Ark., 42-14
1936-TCU, 18-14	1950-TCU, 13-6	1963-Ark., 18-3
1937-tie, 7-7		

TCU has won 20, Arkansas has won 18. Tied 2.

## WITH TEXAS TECH

1926-TCU, 28-16	1943-Tech, 40-20	1958-TCU, 26-0
1927-TCU, 16-6	1944-TCU, 14-0	1959-TCU, 14-8
1928-TCU, 28-6	1945-Tech, 12-0	1960-TCU, 21-7
1929-TCU, 22-0	1950-TCU, 19-6	1961-Tech, 10-0
1930-TCU, 26-0	1951-Tech, 33-19	1962-TCU, 35-13
1936-Tech, 7-0	1955-Tech, 32-0	1963-TCU, 35-3
1942-Tech, 13-6	1956-Tech, 21-7	

TCU has won 13, Tech has won 7. Tied 0.

## WITH TEXAS A&M

1897-TCU, 30-6	1925-TCU, 3-0	1945-TCU, 13-12
1898-A&M, 16-0	1926-tie, 13-13	1946-A&M, 14-0
1902-A&M, 22-0	1927-tie, 0-0	1947-TCU, 26-0
1903-A&M, 14-6	1928-TCU, 6-0	1948-TCU, 27-14
A&M, 16-0	1929-TCU, 13-7	1949-TCU, 28-6
A&M, 11-0	1930-TCU, 3-0	1950-A&M, 42-23
1904-A&M, 29-0	1931-TCU, 6-0	1951-TCU, 20-14
1905-A&M, 20-0	1932-TCU, 17-0	1952-tie, 7-7
A&M, 24-11	1933-TCU, 13-7	1953-A&M, 20-7
1906-A&M, 42-0	1934-TCU, 13-0	1954-TCU, 21-20
A&M, 22-0	1935-TCU, 19-14	1955-A&M, 19-16
1907-A&M, 32-5	1936-A&M, 18-7	1956-A&M, 7-6
1908-A&M, 13-10	1937-tie, 7-7	1957-A&M, 7-0
1909-tie, 0-0	1938-TCU, 34-6	1958-TCU, 24-8
1910-A&M, 35-0	1939-A&M, 20-6	1959-TCU, 39-6
A&M, 23-6	1940-A&M, 21-7	1960-tie, 14-14
1914-A&M, 40-0	1941-A&M, 14-0	1961-TCU, 15-14
1915-A&M, 13-10	1942-TCU, 7-2	1962-TCU, 20-14
1919-A&M, 48-0	1943-A&M, 13-0	1963-tie, 14-14
1924-A&M, 28-0	1944-TCU, 13-7	

TCU has won 23, A&M has won 29. Tied 7.

## WITH CLEMSON

1959-Clemson, \*23-7  
\*Bluebonnet Bowl.

## WITH BAYLOR

1899-tie, 0-0	1911-Baylor, 12-0	1939-Baylor, 27-0
1901-Baylor, 36-0	1912-TCU, 22-0	1940-TCU, 14-12
Baylor, 42-0	1914-Baylor, 28-14	1941-TCU, 23-12
1902-tie, 0-0	1915-Baylor, 51-0	1942-Baylor, 10-7
Baylor, 20-0	1916-Baylor, 32-14	1945-TCU, 7-6
1903-Baylor, 14-0	1917-TCU, 34-0	1946-TCU, 19-16
Baylor, 5-0	1918-TCU, 12-7	1947-TCU, 14-7
1904-tie, 0-0	1919-Baylor, 7-0	1948-Baylor, 6-3
Baylor, 17-0	1920-TCU, 21-9	1949-Baylor, 40-14
TCU, 5-0	1925-tie, 7-7	1950-Baylor, 20-14
1905-TCU, 16-0	1926-tie, 7-7	1951-TCU, 20-7
Baylor, 10-6	1927-TCU, 14-0	1952-tie, 20-20
TCU, 17-0	1928-Baylor, 7-6	1953-Baylor, 25-7
1907-tie, 6-6	1929-TCU, 34-7	1954-Baylor, 12-7
TCU, 11-10	1930-Baylor, 35-14	1955-TCU, 28-6
Baylor, 16-8	1931-TCU, 19-6	1956-TCU, 7-6
1908-TCU, 15-0	1932-TCU, 27-0	1957-TCU, 19-6
TCU, 10-6	1933-Baylor, 7-0	1958-TCU, 22-0
Baylor, 23-8	1934-TCU, 34-12	1959-TCU, 14-0
1909-TCU, 9-0	1935-TCU, 28-0	1960-TCU, 14-6
TCU, 11-0	1936-TCU, 28-0	1961-Baylor, 28-14
Baylor, 6-3	1937-Baylor, 6-0	1962-TCU, 28-26
1910-Baylor, 52-0	1938-TCU, 39-7	1963-Baylor, 32-13
Baylor, 10-3		

TCU has won 33, Baylor has won 30. Tied 7.

## WITH TEXAS

1897-Texas, 18-10	1932-TCU, 14-0	1948-Texas, 14-7
1898-Texas, 16-0	1933-TCU, 30-0	1949-TCU, 14-13
Texas, 29-0	1934-Texas, 20-19	1950-Texas, 21-7
1904-Texas, 40-0	1935-TCU, 28-0	1951-Texas, 32-21
1905-Texas, 11-0	1936-TCU, 27-6	1952-Texas, 14-7
1906-Texas, 22-0	1937-TCU, 14-0	1953-Texas, 13-3
1908-Texas, 11-6	1938-TCU, 28-6	1954-Texas, 35-34
1909-Texas, 24-0	1939-Texas, 25-19	1955-TCU, 47-20
1912-Texas, 30-10	1940-Texas, 21-14	1956-TCU, 46-0
1915-Texas, 72-0	1941-TCU, 14-7	1957-Texas, 14-2
1918-Texas, 19-0	1942-TCU, 13-7	1958-TCU, 22-8
1924-Texas, 13-0	1943-Texas, 46-7	1959-TCU, 14-9
1927-tie, 0-0	1944-TCU, 7-6	1960-Texas, 3-2
1928-Texas, 6-0	1945-Texas, 20-0	1961-TCU, 6-0
1929-TCU, 15-12	1946-TCU, 14-0	1962-Texas, 14-0
1930-Texas, 7-0	1947-Texas, 20-0	1963-Texas, 17-0
1931-Texas, 10-0		

TCU has won 17, Texas has won 31. Tied 1.

## WITH RICE

1914-tie, 0-0	1936-TCU, 13-0	1950-TCU, 26-14
1915-Rice, 33-3	1937-TCU, 7-2	1951-TCU, 23-6
1916-tie, 7-7	1938-TCU, 29-7	1952-Rice, 12-7
1917-Rice, 26-0	1939-TCU, 21-0	1953-Rice, 19-6
1923-TCU, 6-0	1940-Rice, 14-6	1954-Rice, 6-0
1924-tie, 7-3	1941-tie, 0-0	1955-TCU, 35-0
1925-TCU, 7-0	1942-Rice, 26-0	1956-TCU, 20-17
1929-TCU, 24-0	1943-Rice, 13-3	1957-Rice, 20-0
1930-TCU, 20-0	1944-TCU, 9-6	1958-TCU, 21-10
1931-TCU, 7-6	1945-TCU, 14-13	1959-TCU, 35-6
1932-TCU, 16-6	1946-Rice, 13-0	1960-Rice, 23-0
1933-TCU, 26-3	1947-Rice, 7-0	1961-TCU, 35-16
1934-TCU, 7-2	1948-Rice, 21-7	1962-TCU, 30-7
1935-TCU, 27-6	1949-Rice, 20-14	1963-Rice, 33-7

TCU has won 22, Rice has won 17. Tied 3.

## WITH SMU

1915-TCU, 43-0	1934-SMU, 19-0	1949-TCU, 21-13
1916-TCU, 48-3	1935-SMU, 20-14	1950-TCU, 27-13
1917-TCU, 21-0	1936-tie, 0-0	1951-TCU, 13-2
1918-SMU, 1-0	1937-TCU, 3-0	1952-TCU, 14-7
1921-TCU, 13-6	1938-TCU, 20-7	1953-TCU, 13-0
1922-tie, 0-0	1939-SMU, 14-7	1954-SMU, 21-6
1923-SMU, 40-0	1940-SMU, 16-0	1955-TCU, 20-13
1924-SMU, 6-0	1941-TCU, 15-13	1956-TCU, 21-6
1926-SMU, 14-13	1942-TCU, 14-6	1957-TCU, 21-0
1927-SMU, 28-6	1943-SMU, 20-0	1958-SMU, 20-13
1928-TCU, 15-6	1944-SMU, 9-6	1959-TCU, 19-0
1929-tie, 7-7	1945-SMU, 34-0	1960-TCU, 13-0
1930-TCU, 13-0	1946-SMU, 30-13	1961-Tie, 28-28
1931-tie, 0-0	1947-tie, 19-19	1962-TCU, 14-9
1932-TCU, 8-0	1948-tie, 7-7	1963-TCU, 22-15
1933-TCU, 26-6		

TCU has won 24, SMU has won 15. Tied 7.

\*Forfeit, when TCU bus stuck in mud and failed to show up for game.

## SOUTHWEST CONFERENCE CHAMPIONS

1915-Baylor	1940-Texas A&M and SMU
1916-No champion	1941-Texas A&M
1917-Texas A&M	1942-Texas
1918-No champion	1943-Texas
1919-Texas A&M	1944-TEXAS CHRISTIAN
1920-Texas	1945-Texas
1921-Texas A&M	1946-Rice and Arkansas
1922-Baylor	1947-SMU
1923-SMU	1948-SMU
1924-Baylor	1949-Rice
1925-Texas A&M	1950-Texas
1926-SMU	1951-TEXAS CHRISTIAN
1927-Texas A&M	1952-Texas
1928-Texas	1953-Texas and Rice
1929-TEXAS CHRISTIAN	1954-Arkansas
1930-Texas	1955-TEXAS CHRISTIAN
1931-SMU	1956-Texas A&M
1932-TEXAS CHRISTIAN	1957-Rice
1933-No champion	1958-TEXAS CHRISTIAN
1934-Rice	1959-TEXAS CHRISTIAN,
1935-SMU	Texas and Arkansas
1936-Arkansas	1960-Arkansas
1937-Rice	1961-Arkansas and Texas
1938-TEXAS CHRISTIAN	1962-Texas
1939-Texas A&M	1963-Texas

UNMISTAKABLY...THE FINEST



*King's*

The Royal Family of Fine

**CHOCOLATES**

KING CANDY COMPANY • SINCE 1906 • FORT WORTH, TEXAS



THE WORLD'S MOST HONORED WATCH



# LONGINES

Official Watch for these Games  
and for Leading National and  
International Sports Associations  
Throughout The World

Major College Football Games • National Football League Games  
• American Football League Games • Major League Baseball  
Games, including the World Series • U.S. Olympic Trials 1964 •  
President's Cup Regatta • Pike's Peak Hill Climb • Mobilgas  
Economy Run • 100,000 Mile Mercury-Comet Record • North  
American Ski Championships • SCCA National Rallies • National  
Bobsled Championships • National Speed Skating Championships  
• World Professional Ski Championships • National Horse Shows  
• National Outdoor Men's & Women's Swimming Championships •  
World Automobile Speed Record-Lake Eyre, Australia • Grand  
Prix de Monaco • Monte Carlo Rally • Austrian Rowing Champions-  
ships • Swiss Rowing Championships • Int. Ireland Automobile  
Rally • Int. Akropolis Automobile Rally-Greece • Tour of Britain  
(Cycling)-London • Tour de France (Cycling)-Paris • Giro  
d'Italia (Cycling)-Milan • Shell 5000 Rally-Vancouver-  
Montreal

LONGINES, The World's Most Honored Watch

10 World's Fair Grand Prizes

28 Gold Medal Awards

Highest Observatory Honors for Accuracy  
Premier Watch of Science, Aviation and Exploration

LONGINES-WITTMANER WATCH COMPANY



ACCURACY!  
EXCELLENCE!  
ELEGANCE!

LONGINES has been proven superior in open com-  
petition with the world's costliest timepieces.  
Longines is chosen year after year to time almost  
all major championship sports events throughout  
the world. Longines watches are sold and serviced  
in 150 countries of the free world.

Illustrated—  
Longines Grand Prize Admiral  
Automatic Calendar Watch,  
Gold Filled. Mesh bracelet.  
From \$135.

Longines Lady's World's Fair  
Solid 14K gold with faceted  
unbreakable synthetic  
sapphire crystal. From \$125.

At Franchised  
LONGINES-WITTMANER JEWELERS

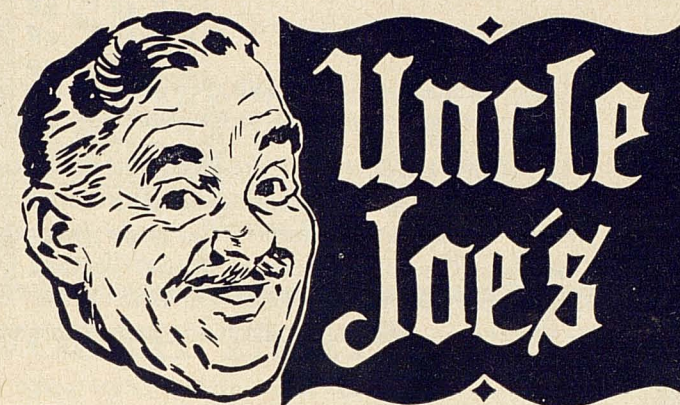
## THE HORNERD FROG VARSITY RESERVES

(Alphabetical)

Name—	Pos.	Wt.	Ht.	Age	Class-Exp.	Hometown - Hi.Schl.
Adams, Mike	QB	174	6-0	19	Soph-FN	Henderson
Bennett, Paul	PE	187	6-1	19	Soph-FN	Amarillo (Tascosa)
Blankinship, Ed	C	195	6-1	19	Soph-FN	Houston (Bellaire)
Clary, Jimmy	HB	190	6-4	19	Soph-FN	Everman
DiCuffa, Jim	C	210	6-0	19	Soph-FN	Dimmitt
Halbert, James	PE	206	6-0	19	Soph-FN	Whitney
Herrington, Charles	TG	207	6-0	19	Soph-FN	Orange (Little Cyp.)
Johnson, Mike	HB	165	6-0	19	Soph-FN	Nacogdoches
Lloyd, Doug	TG	214	6-0	20	Soph-FN	LaMarque
Lucas, James	TT	216	6-0	19	Soph-FN	Rosebud
McMillon, Ron	TE	193	6-2	19	Soph-FN	Lawn
Manka, Leroy	PT	213	6-4	19	Soph-FN	Karnes City
Mitchell, Charles	PT	220	6-6	19	Soph-FN	Horatio, Ark.
Powell, Jack	FB	209	5-11	19	Soph-FN	Granbury
Pyle, Louis	PG	204	6-0	19	Soph-FN	Houston (Sp. Branch)
Ray, Don	C	196	6-0	19	Soph-FN	McAllen
Smith, Freddy	PG	218	5-9	19	Soph-FN	Knox City
Thurman, Dave	FB	195	6-0	19	Soph-FN	Rocksprings
Uptegraph, Don	WB	184	6-2	18	Soph-FN	San Benito
Vestal, Richard	FB	190	6-0	19	Soph-FN	Houston (Sp. Branch)
Young, Charles	TT	200	6-2	19	Soph-FN	Everman

# BUDDIES SUPER MARKETS

*"Your dollar buys more at Buddies"*



HOME OF UNCLE  
JOE'S PRODUCTS



Ask for it by name

1414 JONES STREET

## BIG 4 AUTO SUPPLY CO., INC.

Charles Anton.

Supporter of T. C. U. and the  
FIGHTING FROGS

**Berry Bros. and  
Donohue, Inc.**  
Cleaners and Dyers

Pennsylvania, Between Henderson and Fifth Avenue

## THE GRIDDLE SYSTEM HAMBURGERS — MALTS — FRENCH FRIES

NINE CONVENIENT LOCATIONS

NO. 2	1417 VAUGHN BLVD.	NO. 11	3210 E. BELKNAP
NO. 4	4735 CAMP BOWIE BLVD.	NO. 12	4013 E. LANCASTER
NO. 5	2006 NORTH MAIN	NO. 14	5149 RIVER OAKS BLVD.
NO. 8	1729 8TH AVE.	NO. 18	3148 SO. RIVERSIDE DR.

NO. 21 3113 DENTON HWY.

Drop by to see us after the game!





DR. HENRY HARDT

## Men Behind The Frogs

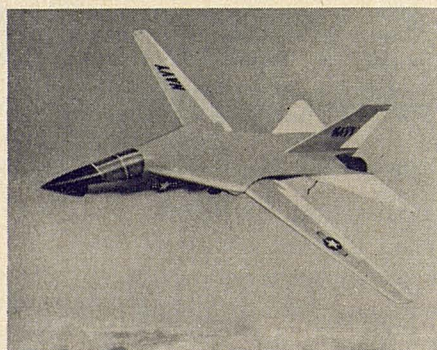
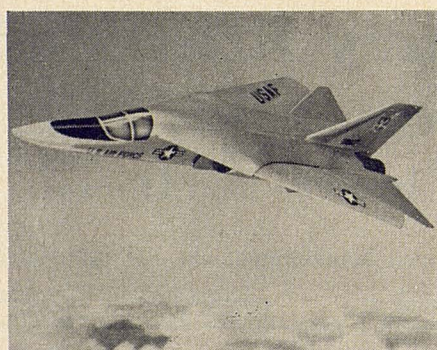
TCU athletics are controlled by the faculty and Board of Trustees. Members of the athletic committee of the Board and the Athletic Council of the faculty give enthusiastic support and close supervision to the University's program.

Carlos Ashley, a TCU graduate, chairmans the Board committee, and Lorin Boswell, another graduate, is chairman of the Board. He succeeded the late Milton Daniel of Breckenridge in 1958.

Other members are Drew Ellis, Perryton; Andrew A. Bradford, Midland; and Y. Q. McCammon, Fort Worth.

Dr. Henry Hardt, former president of NCAA and the Southwest Conference, continues as chairman of the Athletic Council and represents TCU in the Southwest Conference. Council members are Dr. George Tade, Dr. Ken Herrick, Dr. Gustave Ferre, Dr. Leslie Evans, Dr. Gentry Shelton, Abe Martin, Dr. Cecil Jarman, and one student.

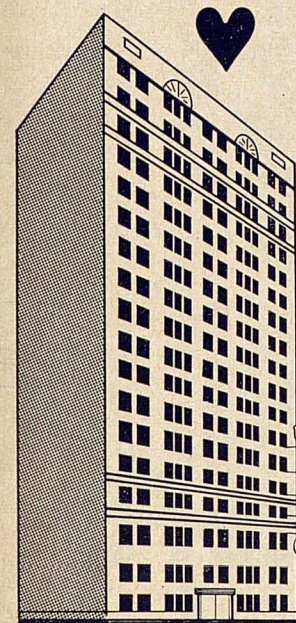
## A Winning Combination . . .



Take an Air Force tactical fighter and a Navy multi-purpose fighter — combine them into one basic airplane — and you have a winning combination. It's the F-111 supersonic bi-service fighter now being developed at General Dynamics/Fort Worth. Like the B-36 and the B-58 before it, the F-111 will bolster the strength of the nation and the Free World.

**GENERAL DYNAMICS | FORT WORTH**

## IN THE HEART OF DOWNTOWN FORT WORTH . . .



Where the new Convention Center is to be constructed. Ft. Worth is growing and going forward, and The Worth is keeping step with this progress.

8 Newly decorated and enlarged meeting and banquet rooms to accommodate up to 300 guests for private functions.

300 Beautifully and comfortably furnished guest bedrooms, studio rooms and suites.

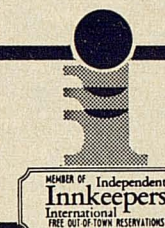
800 Car garage to provide FREE parking.

Charter member of Independent Innkeepers International to give you FREE reservation and immediate confirmation service at outstanding member hotels in Louisiana, Oklahoma, Tennessee, Texas, and Mexico.

### WORTH HOTEL

"aglow with Western Hospitality"

7th & Taylor • Jack Farrell, mgr.



**ARE YOU GOOD ENOUGH  
TO BE AN ARMY OFFICER?  
IF YOU ARE, DON'T SETTLE  
FOR LESS!**



**STAY  
IN  
ARMY R.O.T.C.**

## Enjoy Freshman Football at its Best!

### TCU WOGS' 1964 SCHEDULE

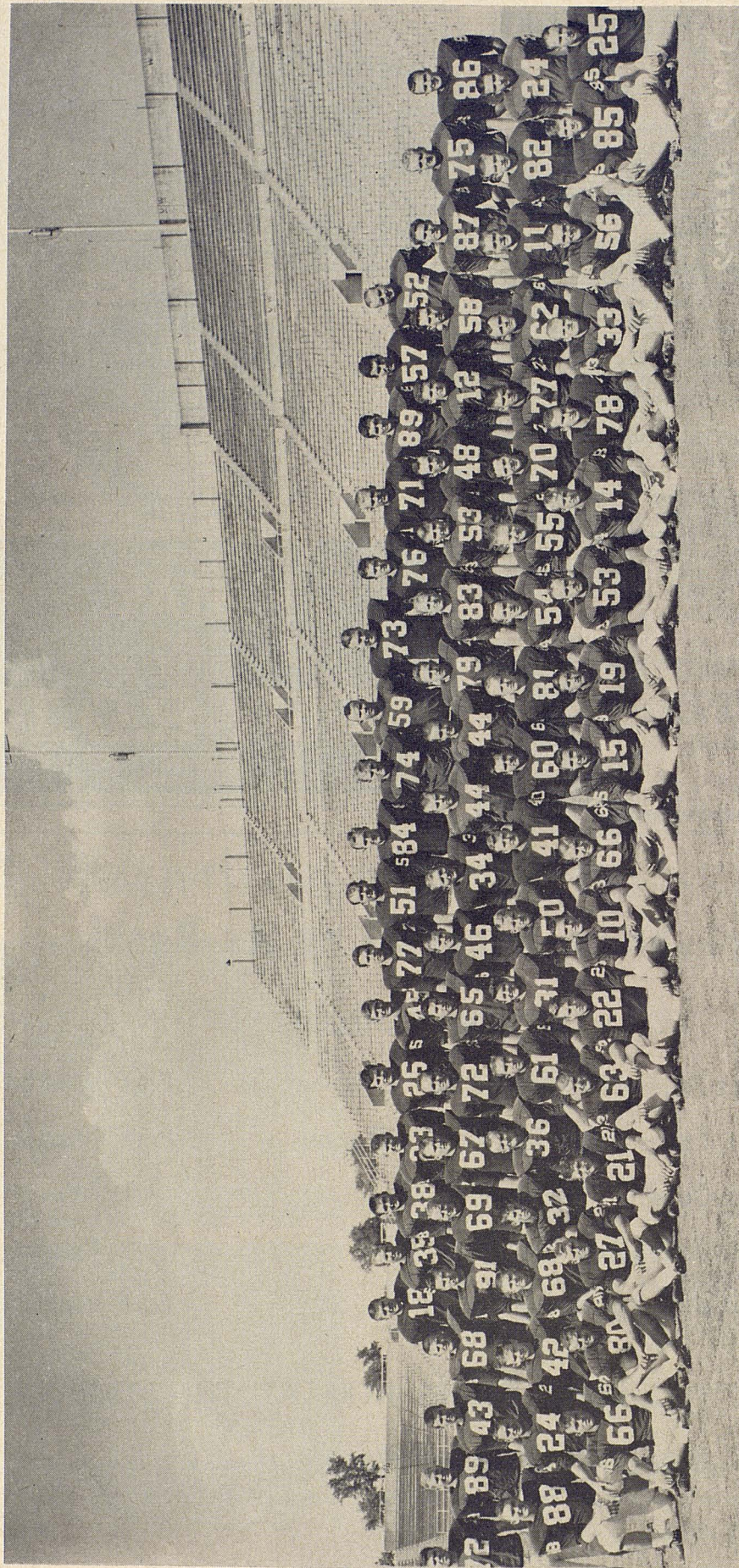
Oct. 7—*Texas A&M Fish, 7:30 p.m.	Fort Worth
Oct. 14—North Texas State Eaglets, 7:30 p.m.	Fort Worth
Oct. 29—Baylor Cubs, 7:30 p.m.	Waco
Nov. 6—Texas Shorthorns, 2 p.m.	Austin
Nov. 20—SMU Colts, 2 p.m.	Fort Worth

**SEE ALL THE WOG HOME GAMES HERE AT THE STADIUM**

**NOTE:** \*Designates annual game sponsored by the TCU Ex-Lettermens Association. Pick up your tickets at numerous Fort Worth business firms. With a special ticket, admission is only 25 cents.



# TCU VARSITY FOOTBALL SQUAD - 1964



**TOP ROW, l to r**—Dan Jones, Tommy Kimbrough, Bill Defee, Mike Adams, Larry Bulaich, Charles Young, Preston Phillips, Ken Henson, Bill Bowers, Larry Clore, Charles Mitchell, Norman Evans, Bobby Smith, Harry Lantz, Jim Hughey, Jim Nayfa, Benny Carter.

**THIRD ROW, l to r**—Leroy Manka, Paul Bennett, Leroy McGirk, Doug Lloyd, Bruce Alford, Jr., Russell Stout, Billy Snow, Ronny Nixon, Porter Williams, Jerry Cannaday, Ernest Bayer, Richard Vestal, Dave Thurman, Charles Herrington, Bobby Barker, Don Ray, Bobby Batton, Richard Westbrook, Ed Blankinship, Jimmy Clary, Ronny Cooper, Joe Ball.

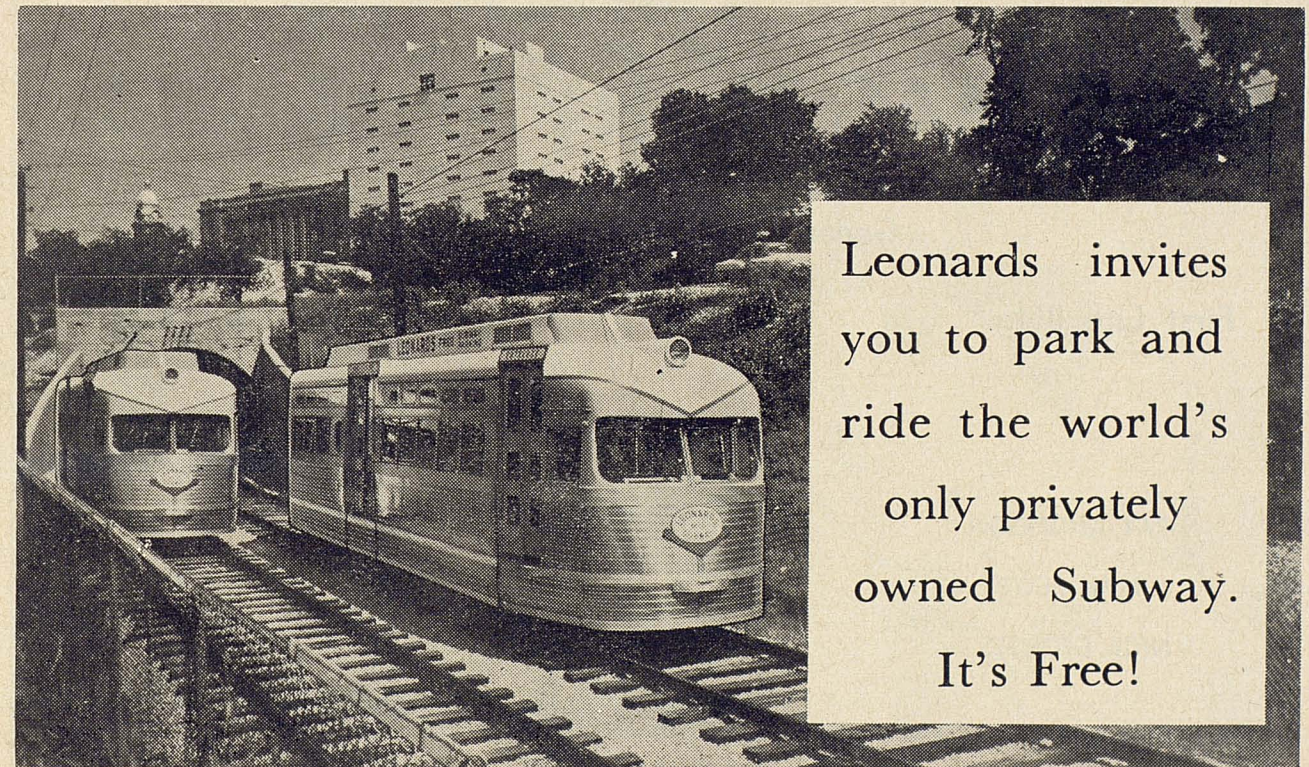
**SECOND ROW, l to r**—Darrell Matt, Paul Smith, Mike Johnson, James Lucas, Gary Hennessee, Jack Powell, Gary Cooper, Harry Fowler, Jim DiCuffa, Carroll DuBoise, Steve Garmon, Larry Perry, Darrell Lester, Jacky Huffman, Richard Sullivan, James Halbert, Butch Gilliam, Kent Nix, Doyle Johnson, Don Uptegraph.

**FRONT ROW, l to r**—Louis Pyle, Joe Sherrell, Cubby Hudler, Jim Fauver, Harvey Reeves, Bobby Sanders, Randy Howard, Freddy Smith, Jimmy Duffey, Frank Horak, Bobby Nelson, John Richards, Adon Sitra, David Smith, Ron McMillon, Charles Campbell, Gene Uptegraph. Not pictured—John Hulise.



## Protein-Power MILK

Boswell's Milk builds muscle . . . helps you make the health team. The extra creamy taste of Boswell's Milk means pure, wholesome nourishment for school, work or play. Drink Boswell's Milk everyday.



Leonards invites you to park and ride the world's only privately owned Subway. It's Free!





**PURPLE LEADERS**—Head Coach Abe Martin takes time to pose with his 1964 Horned Frog captains. They are, left to right, Jim Fauver, Steve Garmon and Norman Evans. All are seniors.

## THOMAS M. RYAN & CO.

*General Insurance and Bonds*

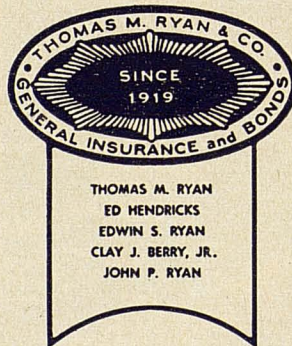
First Life Bldg.

ED 5-1276

RAY ANDERSON

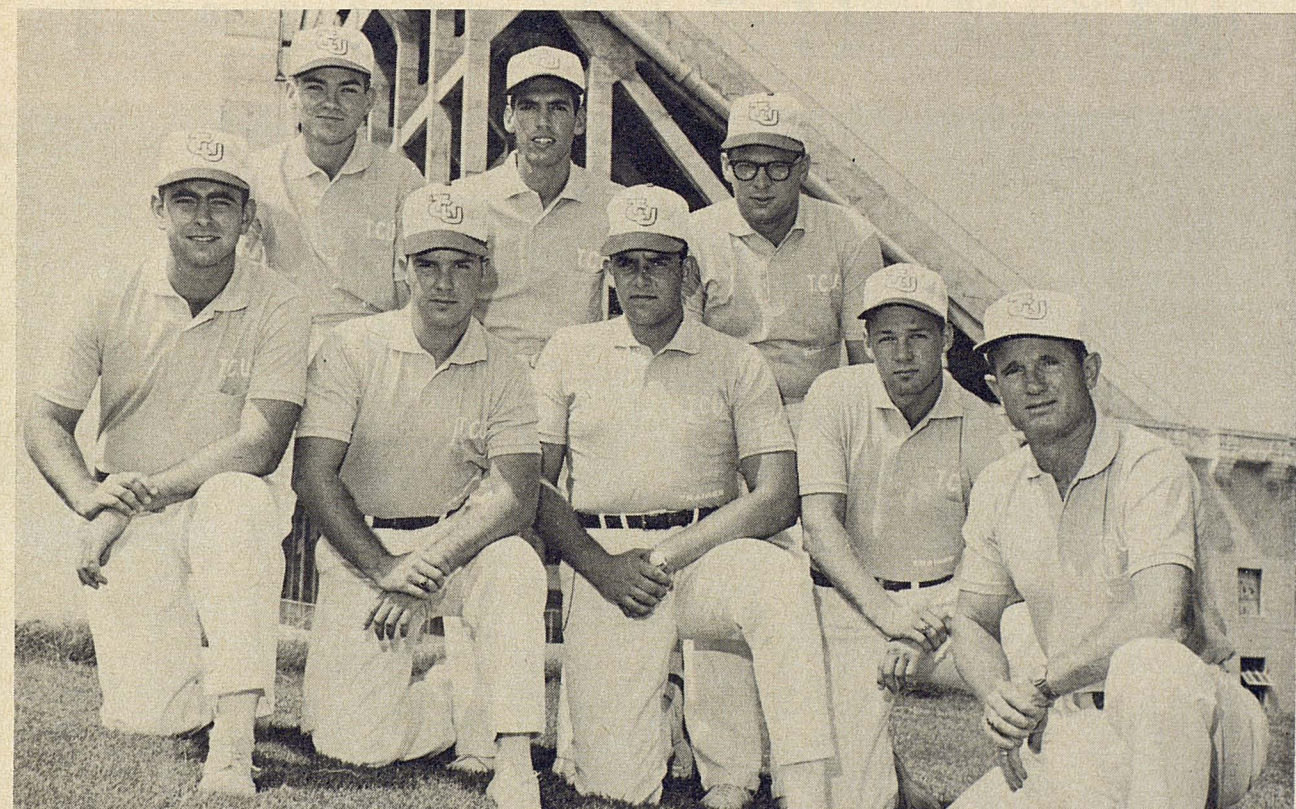
JULIAN SCOTT, JR.

NICK GEORGES



PAUL O. SMITH

JIMMY ROBERTS



**FROG TRAINERS**—Elmer Brown, far right, is recognized as one of the nation's finest athletic trainers. His assistants for 1964 are, front row, l to r—John Lally, Aubry Fisk, Jerry Ball and Doug Gibbins; back row, l to r—Rhea Chafin, James Ketcham and Amos Ketcham.

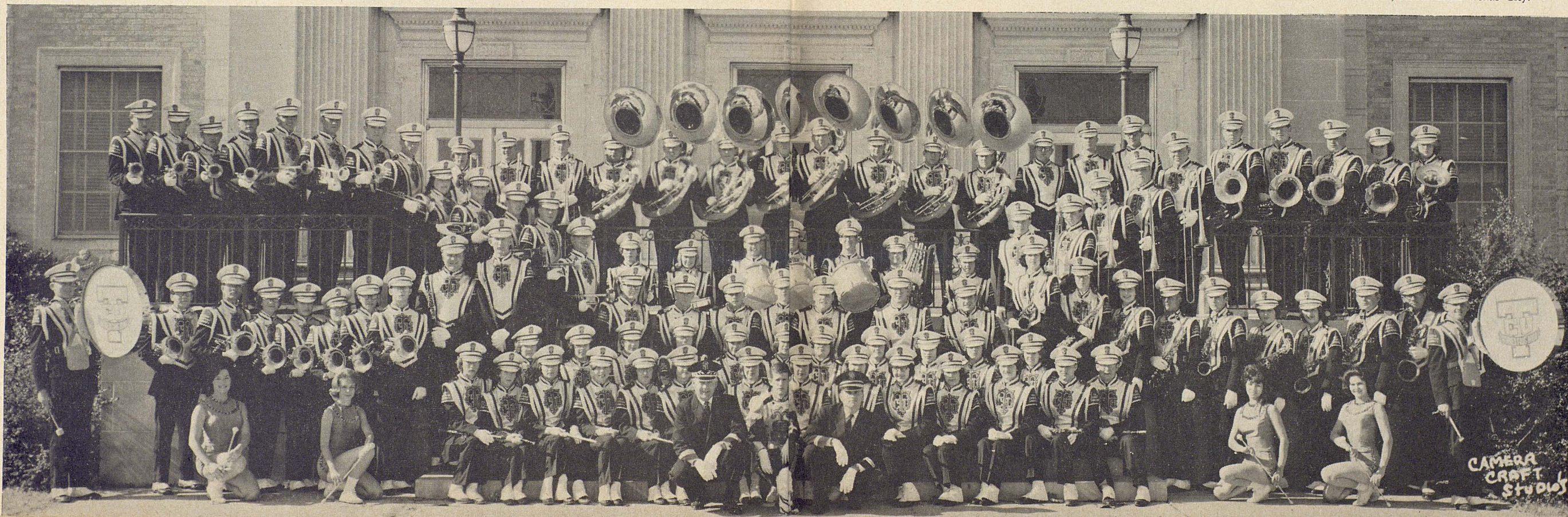
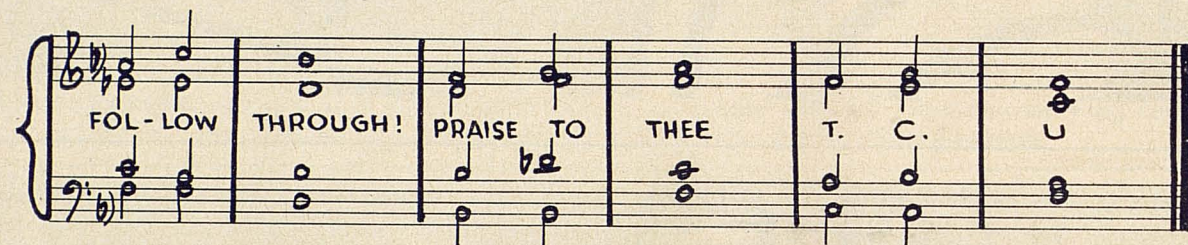


We invite you to

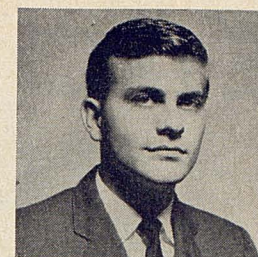
# "SING ALONG WITH THE BAND" TCU ALMA MATER HYMN

Words and Music by  
GLEN CANFIELD, '28

Arrangement by  
JOHN GIORDANO, '60



James A. Jacobsen  
Director of TCU Bands



Curtis Wilson  
Ass't. Dir. of Bands

## The Show-Window of TCU:

# The Horned Frog Band

"And the Band played on." Still one of the most traditional, colorful and fun-for-all attractions at any football game is the halftime program presented by the Band. One of the nation's outstanding collegiate bands is the famed TCU Horned Frog Band, which under the direction of James A. Jacobsen, celebrates its 59th anniversary this fall. It was in 1905 when the first Frog band took the field.

Jacobsen, who begins his 10th year as director, holds a B.A. degree from Colorado State College and a Master of Music Education from TCU. After serving in the Air Force, he was Director of Bands at Midwestern University for ten years, where his bands gained national prominence. Jacobsen has done graduate work with the Vandercook College of Music in Chicago and holds the honorary doctor of music degree from the Southern College of Fine Arts in Houston.

The Hal Leonard Publishing Company of Winona, Minn., recently published a "canned" band show that Jacobsen created. First presented by the TCU band during a football halftime in 1958, it is entitled "Atom and Eve."

Much practice is required by the more than 120 members of the TCU Band to perfect their halftime shows of music and maneuver. Today the University Bands not only include the Horned Frog "marching" band, but also the Symphonic "Concert" band and the Stage band, which is a training unit for jazz musicians.

Assisting Jacobsen is Curtis Wilson, a 1963 TCU graduate with a Bachelor of Music Education Degree. Now working toward a master's degree in music theory and composition at TCU he serves as director of the stage band and assistant director of the marching and concert bands. Student Assistant Director is Phillip L. Aikman, senior from Norfolk, Va.

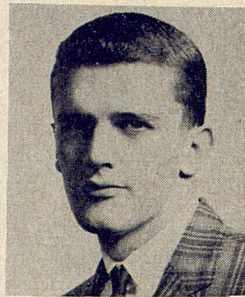
Drum major is Wilson Friberg, a junior from Wichita Falls. Twirlers are Jackie Fatheree, a graduate student from Fort Worth; Michaelen Ferstl, a senior from Fort Worth; Linda Crow, a junior from Belton; and Karen McMillan, a senior from Maplewood, Louisiana.

The Band Council is comprised of Ronnie Puckett, a senior from Texas City, and band president; Wilson Friberg, president of Kappa Kappa Psi, band national fraternity, and Linda White, president of Tau Beta Sigma, band national sorority, and a senior from Texas City.

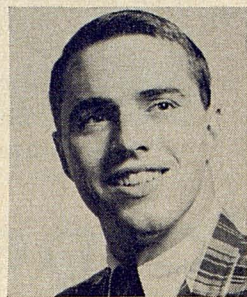
Staff members for the band include Secretary to the Director, Carol Jacobsen, freshman from Fort Worth; Equipment Manager, Lewis Dingman, senior from Grand Prairie; Music Librarian, Michaelen Ferstl, senior from Fort Worth; Assistant Music Librarian, Linda White, senior from Texas City.



# CHEERLEADERS



DICK HANLEY



JERRY LOFTIN



KAKI SIMONS



HARRIETT EAKER



DONNA BONER

These five cheerleaders, along with Mike Hall, of Houston, symbolize the spirit of which Horned Frogs are justly proud.

# YELLS AND SONGS

## The Alma Mater

Hail, all hail, TCU  
Mem'ries sweet, Comrades true;  
Light of Faith, follow through,  
Praise to Thee, TCU.  
Hail, all hail, Glory Bright.  
Purple Frogs, Honor White;  
Victory! Spirits true . . .  
Praise to Thee, TCU.

## Fight Song

We'll raise a song, both loud and long,  
To cheer our team to victory;  
For TCU, so tried and true,  
We pledge eternal loyalty.  
Rah Rah!  
Fight on, boys, fight, with all  
your might,  
Roll up the scores for TCU  
Hail white and purple flag whose  
heroes never lag,  
Horned Frogs, we are all for you.

## Whisper Yell

F! F! FRO (softly)  
O! O! OGS  
FRO OGS, Frogs  
(repeat 3 times, getting louder)

## Chant

F R O G S  
F R O G S  
F R O G S  
F! R! O! G! S!  
Frogs!

## Riff Ram

Riff Ram Bah Zoo  
Lickety Lickety Zoo oo,  
Who Wah, Wah Who  
Let 'er Go, TCU.

## Fight Song Chant

F-R-O-G-S  
F-I-G-H-T  
Purple, White, Fight, Fight, Fight  
Victory, Victory, Right, Right, Right  
F-R-O-G-S  
F-I-G-H-T  
Go, Go, Horned Frogs Go  
TCU Frogs Fight!



PENNY EDWARDS—"MISS TIPARILLO"

## What does she mean "cigars...cigarettes...Tiparillos"?

You'll be hearing that chant more and more—now that Tiparillos have arrived. And arrived they have. In all the right places. With all the right people.

The new Tiparillo has a neat, trim shape. It looks young and debonair. And its pearly, pliable tip pays more than lip service to your smoking pleasure.

And never before such mildness! The most careful blending of choicest imported tobaccos has seen to that. So, too, has the exclusive, veinless Ultra Cigar Wrapper\* that burns so evenly and smoothly it insures complete mildness.

You can even see the mildness. The

surprisingly whiter ash is visible evidence. Smoker's proof. Here is flavor you don't have to inhale to enjoy.

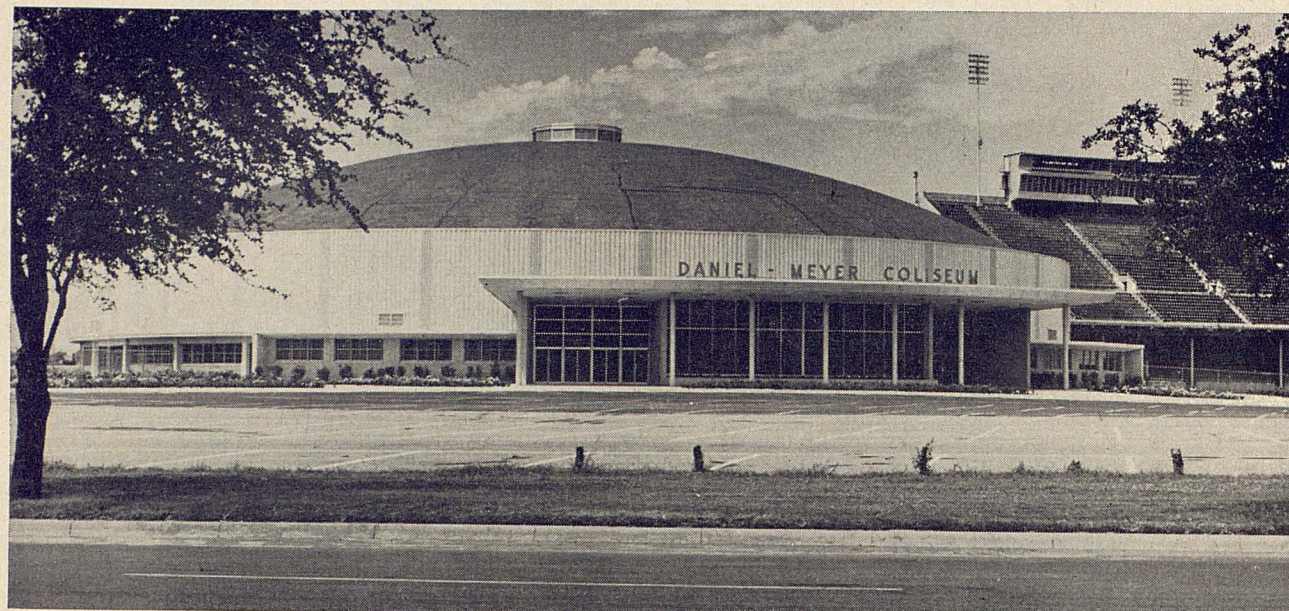
"Cigars . . . cigarettes . . . ?" Who knows, maybe someday it will be just "Tiparillos!"

Why don't you ask for one today?

\*T.M. GENERAL CIGAR CO.

**Tiparillos are on sale at this stadium.**





**DANIEL-MEYER COLISEUM**—With the TCU Stadium in the background, shown is the Daniel-Meyer Coliseum, which was completed in December 1961. Located on the southwest side of the campus, the beautiful structure is one of the nation's finest. It is completely air-conditioned, and has a seating capacity of 7,155—all arm-chair seats. The TCU athletic and ticket offices are also located inside the domed building.

## T. C. U. VARSITY BASKETBALL SCHEDULE FOR 1964-65

### Non-Conference

Dec. 1.....Austin College at Fort Worth  
 Dec. 5.....Ohio State at Fort Worth  
 Dec. 7.....Arlington State at Fort Worth  
 Dec. 10.....Houston at Fort Worth  
 Dec. 12.....Loyola (New Orleans) at Fort Worth  
 Dec. 17.....Loyola (New Orleans) at New Orleans  
 Dec. 21.....Centenary at Fort Worth  
 Dec. 29-30.....Sun Carnival at El Paso (two games to be played)  
 Jan. 18.....Houston at Houston

**NOTE:** \*Indicates afternoon games at 2 p.m.

### Southwest Conference

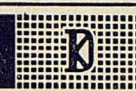
Jan. 5.....Arkansas at Fort Worth  
 \*Jan. 9.....Texas at Fort Worth  
 Jan. 12.....Texas A&M at College Station  
 \*Jan. 30.....Texas Tech at Fort Worth  
 Feb. 2.....SMU at Dallas  
 \*Feb. 6.....Baylor at Fort Worth  
 Feb. 9.....Rice at Houston  
 \*Feb. 13.....Arkansas at Fayetteville  
 Feb. 16.....SMU at Fort Worth  
 Feb. 20.....Baylor at Waco  
 Feb. 23.....Texas A&M at Fort Worth  
 Feb. 26.....Texas Tech at Lubbock  
 Mar. 2.....Texas at Austin  
 Mar. 4.....Rice at Fort Worth

**ALL HOME GAMES TO BE PLAYED AT DANIEL-MEYER COLISEUM**

—Follow the Frogs again over Radio Station WBAP—

Exclusive Distributors of

**DuKANE**

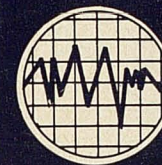


**SOUND SYSTEMS**

Fort Worth's Leading Quality Sound Contractors

**THOMAS ELECTRONICS**

3024 BRYAN • WA 1-1411 • FORT WORTH, TEXAS • 76110



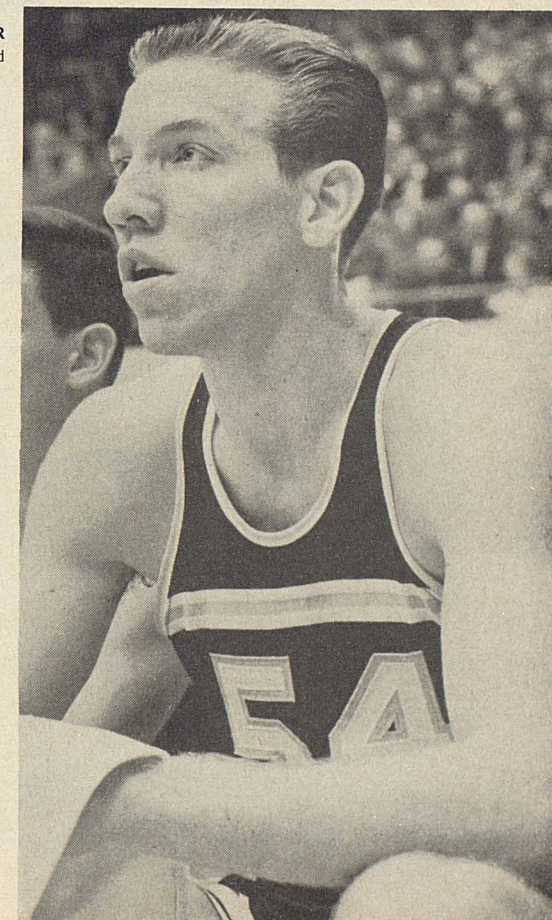
## TCU Cage Outlook

With one of the finest home schedules in recent years, Coach Buster Brannon is hoping his 1964-65 TCU varsity basketball team will be improved this season.

Brannon could have a fine team. He will have seven lettermen returning, including the talented Gary Turner. The 6-6 Turner had a fabulous sophomore season last winter. He had an 18.8 average in 24 games, and added 11.7 more rebounds per outing. Five sophomores, Guard Wayne Kreis, Forward Rodney Chitsey, Guard-Forward Rich Sauer, Guard Garvin Isaacs and Center Stan Farr will make stout bids for starting roles.

Ohio State heads the list of intersectional games in the Daniel-Meyer Coliseum. The strong Buckeyes and 12 other teams will be here. Season ticket information can be obtained from the ticket office in the Daniel-Meyer Coliseum. The phone number is WA 4-5184.

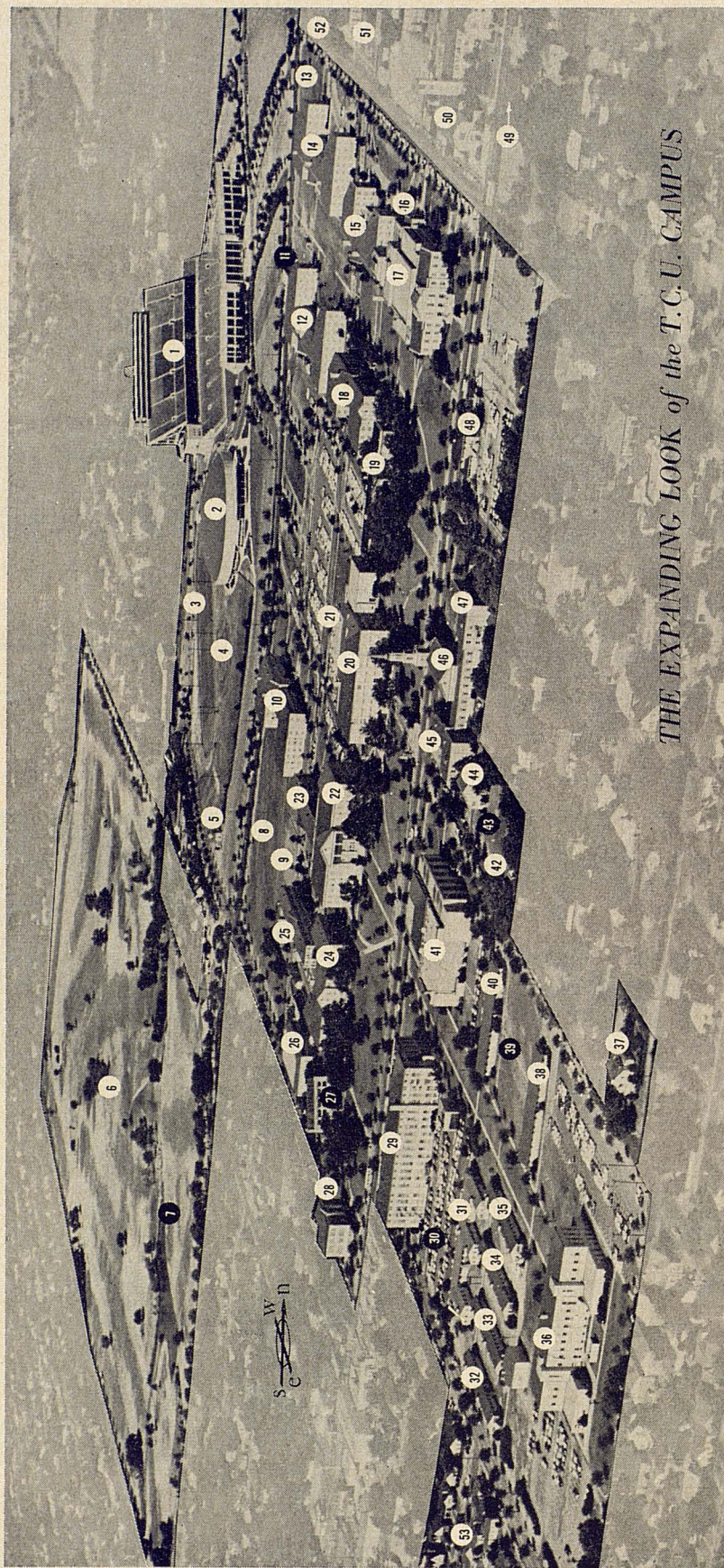
GARY TURNER  
Forward





You're always invited to

SEE TCU'S BEAUTIFUL CAMPUS IN FRIENDLY FORT WORTH



THE EXPANDING LOOK of the T.C.U. CAMPUS

**Guide to Buildings and New or Planned Construction**

- |                                     |                                                   |                                 |                                             |                                                       |                                      |
|-------------------------------------|---------------------------------------------------|---------------------------------|---------------------------------------------|-------------------------------------------------------|--------------------------------------|
| 1. Amon Carter Stadium              | 16. Little Theatre                                | 23. Tom Brown Dormitory (Men)   | 29. Winston-Scott Hall (Science)            | 34. Temporary Bldg. 4—Engineering                     | 47. Undergraduate Religion Clinic    |
| 2. Daniel-Meyer Coliseum            | 17. Ed Landreth Fine Arts Building and Auditorium | 24. Clark Dormitory (Men)       | 30. Proposed T.C.U. Research Laboratories   | 40. Temporary Bldg. 6—Psychology Laboratories         | 48. Clinic—Hearing Therapy           |
| 3. Track                            | 18. Foster Dormitory (Women)                      | 25. Pete Wright Dormitory (Men) | 31. Temporary Bldg. 1—Psychology Laboratory | 41. Mary Coats Burnett Library                        | 49. T.C.U.-R.M. Means Apts. Church   |
| 4. Baseball Diamond                 | 19. Jarvis Dormitory (Women)                      | 26. Practice Gymnasium Building | 32. Temporary Bldg. 2—Girls Physical Ed.    | 42. T.C.U. Nursery School                             | 50. University Christian Church      |
| 5. Ames Observatory                 | 20. Dave Reed Hall                                | 27. Physical Education Building | 33. Temporary Bldg. 3—Ballet                | 43. Proposed Home Economics Bldg. (Possible Location) | 51. University Baptist Church School |
| 6. Worth Hills Property             | 21. Brown-Lupton Student Center                   | 28. Bailey Building—Education   |                                             | 44. Home Economics Classroom                          | 52. Alice Carlson Elementary School  |
| 7. New Dormitory Complex            | 22. M. E. Sadler Hall                             |                                 |                                             | 45. Brite Divinity School                             | 53. Ministerial Apartments           |
| 8. ROTC Drill Field and Intramurals |                                                   |                                 |                                             | 46. Brite Carr Chapel                                 | ● New or Planned Construction        |
| 9. Tennis Courts                    |                                                   |                                 |                                             |                                                       |                                      |

and we invite you to visit the Stafford-Lowdon Co.—for the finest in printing, lithography, office equipment

**STAFFORD-LOWDON CO.** ED 6-2401, FORT WORTH, TEXAS  
PRINTING • LITHOGRAPHING • OFFICE EQUIPMENT • A. B. DICK DUPLICATING EQUIPMENT

# TEXAS TECH



DR. R.C. GOODWIN  
President



POLK ROBISON  
Athletic Director



ADMINISTRATION, BUILDING



TEXAS TECH COACHING STAFF  
Kneeling—Head Coach J.H. KING— Standing Left  
Asst Coaches—MERRILL GREEN, BERL HUFFMAN  
MATT LAIR, JOHN CONLEY, JIM WRIGHT, JOE BLAYLOCK



J.T. KING  
Head Coach







E-80

TOMMY DOYLE



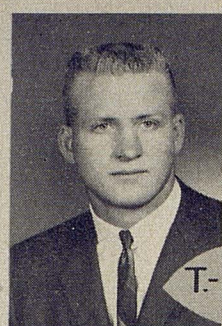
E-86

JERRY BALCH



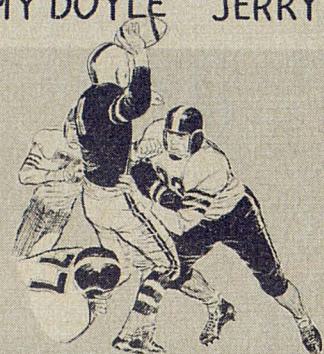
E-82

CHARLES GLADSON



T-77

JOHN CARRELL



# Red



T-76

BILL MALONE



QB-15

JAMES ELLIS



T-70

RONNIE PACK



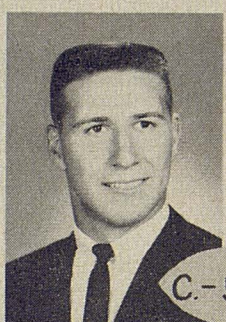
FB-34

KENNETH GILL



QB-13

TOM WILSON



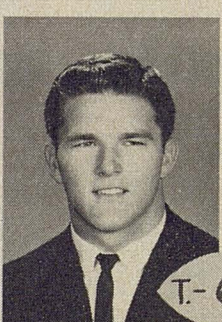
C-50

REG SCARBOROUGH



HB-44

DON ANDERSON



T-65

EUGENE HOWARD



FB-31

JIM ZANIOS



G-64

JAMES CECIL



HB-20

JOHNNY AGAN



G-60

RAY GARRETT



E-83

JOE HURLEY



E-81

JEFF WHITE



T-74

JOHN PORTER



G-66

JAMES HENKEL

# Raiders



T-78

RONNIE REEGER



HB-24

JIMMIE EDWARDS



E-89

SAM CORNELIUS



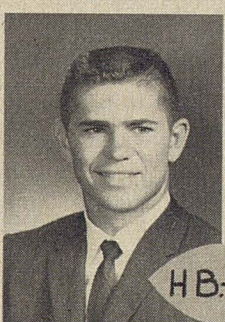
G-68

MARC BRYANT



HB-49

ROBERT YANCER



HB-23

DAVID BAUGH



T-75

BILL ADAMS



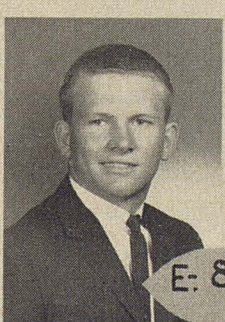
C-52

C.C. WILLIS



C-51

BUTCH THOMPSON



E-84

JERRY SHIPLEY



QB-17

GUY GRIFFIS



E-87

TERRY MC WHORTER



# TCU - CLEMSON

## HERE

### SATURDAY, OCTOBER 24

### 2:00 P. M.

Tickets on Sale daily at Daniel-Meyer Coliseum

**GIVE**  
**and**  
**SUPPORT**  
**THE**  
**UNITED**  
**FUND**

#### LEADING FROG SCORERS SINCE 1923

1923—Bill Honey, hb..... 18	1944—Merle Gibson, e..... 36
Harry Taylor, hb..... 18	1945—Norman Cox, fb..... 30
1924—Jim Cantrill, fb..... 18	Jessie Mason, hb..... 30
1925—Harry Taylor, hb..... 24	1946—Pete Stout, fb..... 24
1926—Bernard Williams, fb 51	1947—Pete Stout, fb..... 54
1927—N. L. Clark, qb..... 24	1948—Pete Stout, fb..... 42
1928—Austin Griffith, fb... 38	1949—John Morton, fb..... 42
1929—Cy Leland, hb..... 78	1950—Bobby Floyd, fb..... 48
1930—Cy Leland, hb..... 60	1951—Bobby Floyd, fb..... 48
1931—Richard Oliver, hb... 24	1952—Ronald Clinkscale, qb 24
Blair Spearman, hb..... 24	Bob Blair, e..... 24
1932—Richard Oliver, hb... 72	1953—Ray McKown, qb-fb... 38
1933—Charles Casper, hb... 60	1954—Jim Swink, hb..... 37
1934—Jimmy Lawrence, hb 42	1955—Jim Swink, hb..... 125
1935—Jimmy Lawrence, hb 48	1956—Ken Wineburg, hb... 42
1936—Harold McClure, hb... 36	1957—Jim Shofner, hb..... 40
1937—David O'Brien, qb... 55	1958—Marshall Harris, hb... 26
1938—Connie Sparks, fb... 66	1959—Harry Moreland, hb... 36
1939—Kyle Gillespie, qb... 30	Marvin Lasater, hb... 36
1940—Dean Bagley, qb..... 24	1960—Sonny Gibbs, qb..... 24
1941—Frank Kring, fb..... 42	1961—Sonny Gibbs, qb..... 18
1942—Beecher Montgomery, qb..... 19	Tommy Crutcher fb... 18
1943—Jim Lucas, qb..... 25	1962—Sonny Gibbs, qb..... 42
	1963—Jimmy McAteer, kicking specialist..... 23



## THE FROG CLUB

AN ORGANIZATION OF FRIENDS OF TCU

### 1964-65 OFFICERS AND ADVISORY BOARD MEMBERS

#### OFFICERS

<i>President</i> <b>R. M. (DICK) HAZLEWOOD</b> TCU, '34	<i>First Vice-President</i> <b>LEE HERTEL</b> no college affiliation	<i>Second Vice-President</i> <b>BOB BAIRD</b> no college affiliation
<i>Executive Vice-President</i> <b>DAVID O'BRIEN</b> TCU, '39		

#### Vice-Presidents

<b>CARL T. ANDERSON</b> TCU, '41	<b>KEN W. DAVIS</b> no college affiliation	<b>A. H. (CHIEF) LIGHTFOOT</b> Texas, '27	<b>ROGER B. OWINGS</b> Swarthmore, '15	<b>LARRY THOMAS</b> TCU, '59
<b>CHARLES ANTON</b> no college affiliation	<b>JAMES H. FLEMING</b> Texas A&M, '33	<b>DICK LOWE</b> TCU, '51	<b>MARTIN A. ROSE, JR.</b> TCU, '58	<b>GLEN TURBEVILLE</b> TCU, '25
<b>LORIN A. BOSWELL</b> TCU, '37	<b>MRS. W. W. FLEMMING</b> TCU, '45	<b>BOBBY MALONE</b> TCU, '50	<b>ARCH H. ROWAN</b> no college affiliation	<b>ROBERT L. WARD</b> TCU, '38
<b>V. W. BOSWELL</b> Texas A & M, '26	<b>T. F. HODGE</b> no college affiliation	<b>TOMMY G. MERCER</b> TCU, '53	<b>W. M. SHERLEY</b> TCU, '24	<b>JACK K. WILLIAMS</b> Arizona, '36
<b>R. B. CANNON</b> no college affiliation	<b>DR. GEORGE LACY</b> TCU, '25	<b>CHARLES W. NEEDHAM</b> TCU, '37	<b>J. HULBERT SMITH</b> SMU, '41	<b>J. VAUGHN WILSON</b> Oklahoma, '33
<b>I. B. CHAPMAN, JR.</b> TCU, '61	<b>REV. JOHN R. LEATHERBURY</b> Virginia, '30	<b>RICHARD L. OLSON</b> TCU, '50	<b>ERNEST A. STRANGE</b> TCU, '30	<b>DON WOODARD</b> TCU, '57
<i>Secretary</i> <b>JOHN S. JUSTIN, JR.</b> TCU, '39	<i>Treasurer</i> <b>W. A. LANDRETH</b> Texas, '39	<i>Executive Secretary</i> <b>PAUL O. RIDINGS</b> TCU, '38	<i>Assistant Executive Secretary</i> <b>MRS. MYRTLE HIRSTINE</b> no college affiliation	

#### EXECUTIVE COMMITTEE

<i>Chairman (&amp; Immediate Past President)</i> <b>TOM MCGANN</b> no college affiliation	<i>(Past Presidents)</i>	<i>Honorary Chairman of the Board</i> <b>NEVILLE G. PENROSE</b> no college affiliation
<b>CLAY J. BERRY</b> Southwestern, '25	<b>G. BURDETE BRANTS</b> no college affiliation	<b>GEORGE LISER</b> New Mexico, '32
		<b>BARRON McCULLOUGH</b> Texas, '26
		<b>RAY McCULLOUGH</b> TCU, '32
		<b>CLIFTON H. MORRIS</b> Texas, '16

#### FINANCE COMMITTEE

<b>Y. Q. McCAMMON</b> Texas, '16	<b>W. L. STEWART</b> Colorado, '16
-------------------------------------	---------------------------------------

#### ADVISORY BOARD

<b>J. L. ABBOTT</b> Manitoba, '25	<b>AMON G. CARTER, JR.</b> Texas, '46	<b>HERMAN GARTNER</b> no college affiliation	<b>J. T. LUTHER, JR.</b> Missouri, '33	<b>ROY G. RALLS</b> no college affiliation
<b>PAUL J. ADAM</b> Kansas, '33	<b>F. DILL COLE</b> Texas A & M, '37	<b>MRS. ROBT. D. GOODRICH</b> Oklahoma, '18	<b>J. C. MAXWELL</b> no college affiliation	<b>LISTON W. SLACK</b> no college affiliation
<b>LEE BASSINGER</b> TCU, '34	<b>MRS. RUDY COPELAND, JR.</b> no college affiliation	<b>JOE GUMINSKI</b> no college affiliation	<b>R. B. MONCRIEF</b> Texas, '44	<b>MARC B. SMITH</b> Texas, '22
<b>ROLAND S. BOND</b> SMU, '19	<b>R. W. GREAMER</b> LSU, '41	<b>HAL A. HEDBERG</b> no college affiliation	<b>W. A. MONCRIEF, JR.</b> Texas, '42	<b>W. T. SNIPES</b> no college affiliation
<b>VICTOR E. BONELLI</b> Jefferson Medical, '07	<b>MARK FREDERICK</b> TCU, '22	<b>CHARLES J. HOFFMAN</b> Oklahoma, '18	<b>I. C. PARKER</b> no college affiliation	<b>W. B. STIRMAN</b> TCU, '15
<b>MALCOLM K. BRACHMAN</b> Yale, '45	<b>H. B. FUQUA</b> Oklahoma, '19	<b>C. W. HORAN, SR.</b> no college affiliation	<b>LEO POTISHMAN</b> no college affiliation	<b>GEORGE THOMPSON, III</b> Texas, '49
<b>ROBERT G. CARR</b> Kentucky Wesleyan, '17		<b>RALPH LOWE</b> no college affiliation		<b>MRS. BRUCE YOUNG</b> no college affiliation



# THE 1964-65 FROG CLUB

J. L. Abbott  
A. S. Acker  
E. T. Adair  
Duane Adcock  
A. E. Addyman  
S. B. Adler  
John F. Agee  
Lawrence Albritton  
Errett R. Albritton  
Carl J. Aldenhoven  
Alton H. Alexander  
C. W. Alexander  
Mrs. Lou Alexander  
Dr. Ted Alexander  
Mary Jean Allcorn  
A. C. Allen  
Donald D. Allen  
Van Amis  
Carl T. Anderson  
H. C. "Andy" Anderson  
Willard S. Anderson  
Felix Ankele  
Charles Anton  
Mrs. Dorrit Appelman  
R. C. Archibald  
O. C. Armstrong  
R. Wright Armstrong  
Carl Arthur  
Carlos C. Ashley, Jr.  
Wm. R. Auld, Jr.  
Ronald Aultman  
E. G. Aycock  
Roy Bacus  
W. R. Bagg  
Harold B. Bailey  
Morris Bailey  
Dr. Noel R. Bailey  
Bob Baird  
W. Hoyt Baird  
Vic Ball  
Jim D. Barbour  
Lou Barnett  
G. O. Barney  
Dr. I. P. Barrett  
Bernard "Tut" Bartzten  
Seth Barwise  
Lee Bassinger  
C. C. Bearden, Jr.  
Theo P. Beasley  
Dr. Grant F. Begley  
Le Bennett  
Frank M. Benton  
W. R. Berger  
E. T. Berndt  
Clay J. Berry  
William Bever  
Dr. D. D. Beyer  
Dr. R. B. Beyer  
Pete Beyette  
George K. Bigley  
Sam Billingsley  
S. M. Bingham  
Mrs. Philip R. Bishop  
W. G. Blackmon  
C. A. Blanton  
W. J. Blount  
Dave Bloxom  
A. S. Boarnet  
Louis Bockstein  
William D. Bodiford  
Glenn E. Boehmer  
Lacy Bogges  
W. P. Bomar  
Lewis H. Bond  
Roland S. Bond  
Dr. Victor E. Bonelli  
Bruce L. Boswell  
Lorin Boswell  
V. W. Boswell  
W. E. Boswell, Jr.  
Louis Bothe, Jr.  
Jack E. Bowers  
Joe P. Bowlin  
Malcolm K. Brachman  
Sol Brachman  
Arthur M. Brackett  
Amos Bradshaw  
Dr. W. V. Bradshaw, Jr.  
Bryant T. Brame  
O. J. Branch

Paul H. Brandt  
Buster Brannon  
Fred M. Brants  
G. B. Brants  
Howard C. Brants  
Dr. H. L. Brasher  
J. Y. Bratcher  
Phil M. Bratten  
Woodrow Brillhart  
Ralph A. Bristol  
L. E. Brock  
Joe Bronstein  
Edward J. Brook  
A. E. Brooks  
Henry Brooks  
R. J. (Chub) Brooks  
J. V. Brookshear  
T. C. Brookshire  
Loyd D. Brotherton  
A. K. Brown  
George R. Brown, Jr.  
Johnnie Brown  
R. D. Brown, Jr.  
Dr. Robt. W. Brown  
Wray D. Brown  
Dr. Jack D. Brownfield  
J. L. Brownlee  
Bert Bruce  
Bobby L. Bruner  
Raymond Buck  
John J. Burgess  
Dr. Jas. V. Burnett  
George D. Busch  
Ira Butler  
J. D. Butler, Jr.  
Richard Butler  
Tom Butler  
John Cadwallader  
Gene L. Cagle  
C. J. Campbell  
Clifford J. Campbell  
Clude Campbell  
Dr. J. Franklin Campbell  
Jack W. Campbell  
Jim Campbell  
William R. Campbell  
A. B. Canning  
R. B. Cannon  
M. R. Carb  
M. R. Carb, Jr.  
O. G. Carlson  
Dr. E. P. Carlton  
Dr. Robt. E. Carr  
Robert G. Carr  
Howard Carrico  
Dr. E. H. Carriker  
Eugene H. Carter  
Mrs. Natalie Carter  
Paul D. Cato  
Mrs. Inez Caviness  
John H. Cayce  
I. B. (Barney) Chaoman, II  
Ralph Chaoman  
M. E. Chappell  
John E. Cherry  
N. R. Chico  
H. E. Chiles  
H. A. Clark  
Herman E. Clark  
Lester Clark  
W. Scott Clark  
Joe A. Clarke  
Frank Clements  
Ronald Clinkscale  
Hubert Clore  
Mrs. T. E. Coale  
F. Dill Cole  
John B. Collier, Jr.  
John B. Collier, III  
W. B. Collup, Jr.  
Dr. Dolphus E. Compere  
L. B. Connelley  
Allen B. Conner  
Wm. C. Conner  
W. J. Connolly, Jr.  
Charlie Conway  
Mrs. Helen Copeland  
Jim C. Cornish  
H. C. Couser  
R. T. Cowan  
Robert E. Cowan

R. E. Cox, Jr.  
Bob Craig  
Don Craig  
J. D. Craig  
R. W. Creamer  
E. F. Crites  
Chas. C. Cunningham  
J. P. Cusack  
Dr. Jack E. Daly  
M. A. (Gus) Daniels  
E. F. Darby  
Dr. Frank J. Daugherty  
C. J. Davidson  
Dr. Chas. P. Davis  
Kenneth W. Davis  
Noble W. Davis  
Pat L. Davis  
Perry Davis  
Jim Bob Daws  
Dr. G. W. Day  
J. Warren Day  
Beale Dean  
Jack E. Dean  
R. W. Decker  
George C. Deen  
Emile Denke  
D. W. Devaney  
R. W. Dial  
F. B. Dickey  
David L. Dickinson  
Ed Dietz  
Buddy Dike  
Ben Dobson  
Geo. A. Donnelly  
Ira C. Driver  
J. S. DuBose  
William S. DuBose  
James W. Duncan, Jr.  
T. H. Duncan  
Lewis W. Dunn  
Jim Eagle  
Mrs. Jim Eagle  
Norman T. Eari  
R. C. Earl, Jr.  
W. P. Earney, Jr.  
V. J. Earnheart  
Gordon Eastman  
Gladys Andre Eberhardt  
E. H. Eddieham  
Frank B. Edelbrock  
L. C. Edmonds  
L. P. Ekstrom  
Frank A. Eldredge  
Dr. Edwin A. Elliott  
George W. Elliott  
Alston Ellis  
Dr. Dan G. Ellis  
Drew Ellis  
B. E. Ellman  
Price Erickson  
Cal Estill  
J. Harold Evans  
Bruce D. Fallis  
C. J. (Jack) Farrell  
K. F. Felts  
J. Ernest Fender, Jr.  
Lt. Col. J. S. Fenton, Jr.  
Ben M. Ferguson  
John K. Ferguson  
Dan Fillingim  
Lundy H. Finch  
Ray Finley  
Beeman Fisher  
Malcolm B. Fleet  
J. H. Fleming  
W. W. Flemming  
Mrs. W. W. Flemming  
James M. Floyd  
Wm. E. Forehand  
Ben J. Fortson  
J. E. Foster, III  
Jack Foster  
Andy Fournier  
Mal Fowler  
Wendell C. Fowler  
Wilson H. Fox  
Chuck Fraley  
W. O. Freeman  
James E. Friend  
C. Ferd Fry

Wilford Fultz  
H. B. Fuqua  
Albert Gackle  
Ralph M. Gage  
James C. Galbraith  
Elgin Gandy  
Max J. Gardner, Jr.  
George Gartner  
Herman Gartner  
Fred L. Gary  
C. R. Gentry  
Preston Geren, Jr.  
Preston M. Geren, Sr.  
Bob Germond  
Clyde Gibbs  
A. C. Gibson  
G. M. Gillespie  
John T. Ginocchio  
Arthur I. Ginsburg  
Marcus Ginsburg  
Dale Glasscock  
B. J. Glover  
Dr. A. I. Goldberg  
J. A. Gooch  
Mrs. R. D. Goodrich  
Robert R. Goodrich  
Charles D. Goodwin  
R. W. Gordon  
E. S. Graham, Jr.  
O. L. Graham  
T. E. Graham  
Vance Graham, Jr.  
Wallace E. Graham  
John L. Gray  
R. H. Gray  
Jos. F. Greathouse  
H. S. Green, Sr.  
John C. Green  
Judge Green  
Wm. T. Green  
H. K. Greenleaf  
Mike Greenwall  
Dr. Abe Greines  
E. A. Gresham  
C. C. Griffin  
Dr. O. P. Griffin  
Dale Griggs  
George L. Grimes  
William C. Gurnfory  
Joe Guminski  
Mrs. Joe Guminski  
H. Earl Hall, Jr.  
Dr. James A. Hallmark  
Cedric G. Hamlin  
Wilton N. Hammond  
Glen A. Hagan  
Bob Hanger  
Bryan Hanks  
R. E. Harding, Jr.  
Robert G. Harmon  
James E. Harris, Jr.  
Wm. H. Harrison  
J. W. Harvey  
Wade Hawkins  
Ray A. Hayes  
Calvin Hazlewood  
Dick Hazlewood  
Dr. W. M. Head  
A. S. Headley  
Dr. K. C. Heald  
Henry Hearne  
H. A. Hedberg  
Dale Heiskell  
R. E. Henderson  
Erwin T. Herbert  
Dr. Kenneth W. Herrick  
Marion Herring, Sr.  
Bob Hertel  
Lee Healy  
Marion L. Hicks  
Harmon Hightower  
Lynn A. Hill  
Charlie Hillard  
L. J. Hilscher  
M. E. Hinesley  
John L. Hirstine, Jr.  
Mrs. John L. Hirstine, Jr.  
Chas. J. Hoffman  
James E. Friend  
C. Ferd Fry

Chester Hollis  
Gus Holmstrom  
B. N. Honea  
Robert H. Hopkins, Jr.  
C. W. Horan, Jr.  
C. W. Horan, Sr.  
W. A. Horan  
Dr. Jack Horn  
Harold V. Hough  
W. M. Houk  
R. C. Houlihan  
Jack Howard  
Jack D. Howell  
Robt. L. Hoyt  
Floyd Hubert  
Gerald D. Huck  
R. K. Huddleston  
Donald Hudgins  
W. P. Hudgins  
Edric Hudson  
William Hudson  
Dr. Sim Hulsey  
Walter R. Humphrey  
Sam M. Humphreys  
L. J. Hunt  
Edwin C. Hutchinson  
Fred Hyer  
E. B. Ingram  
A. C. Isham  
Sig Iversen, Jr.  
J. I. Jackson  
Jack A. Jamieson  
B. G. Jenkins  
Dr. W. R. Jenkins  
Wayne E. Jenkins  
Byron Matthews  
R. D. Maxey  
Dr. Earl Maxwell  
J. C. Maxwell  
Cliff May  
Richard R. May  
R. J. Mayer  
M. O. Mayes  
Mason Mayne  
Dewey Mayton  
Ken Noel  
Dan H. Nordstrom  
Allene A. Norman  
M. E. Norman  
Wirt M. Norris, Jr.  
Phil North  
David O'Brien  
Jack O'Dowd  
Jack Oliver  
Richard O'Neal  
Dr. H. Richard O'Neal  
Dr. May Owen  
Roger B. Owings  
Theron D. Oxley  
J. C. Pace, Jr.  
T. W. Painter  
W. C. Painter  
Earl P. Paris, Jr.  
H. M. Park  
Jack Park  
I. C. Parker  
Craig W. Parris  
Sam C. Parrish  
N. R. Parsons  
A. M. Pate, Jr.  
Mrs. J. D. Patton  
Jon M. Payne, Jr.  
Dr. G. F. Pease  
Mack Pegues  
Ted Penner  
Neville G. Penrose  
Cy Perkins  
Ralph Perry  
George A. Petters  
L. F. Peterson  
W. H. Peterson  
R. L. Pettit  
Jim R. Phillips  
Martin Phillips  
H. A. Pickens  
J. P. Pierce  
Don Pierson  
Reed Pigman  
William V. Plankey  
Leo Potishman  
H. D. Powell  
Mrs. Katherine Powell  
Luther Prescott  
B. K. Pressley  
Andrew F. Price  
Guy Price  
Mike Price  
Dr. R. V. Price  
W. H. Price

John L. Lewis  
L. D. Lewis, Jr.  
A. Horace Lightfoot  
Dr. C. P. Lipscomb  
Leo Lipshitz  
Morris Lipshitz  
Mrs. Betty Little  
C. D. Little  
J. D. Lively  
John Loffland, Jr.  
Harry L. Logan, Jr.  
Walter Logan, Sr.  
Lee L. Longinotti  
William M. Lourcy  
Dr. Claxton E. Lovin  
R. R. Lowdon, Jr.  
W. C. Lowdon  
Dick Lowe  
Ralph Lowe  
Marc H. Lowrance, Jr.  
Beaty Lucius  
G. E. Luck  
Edgar Luhn  
Mary D. Lukas  
Roy W. Lydick  
Stuart Lydick  
Web Maddox  
Bobby Malone  
Robert C. Mann  
L. M. Manning, Jr.  
W. E. Marshall  
Abe Martin  
Arvie Martin  
Richard F. Martin  
Roy S. K. Masi  
Byron Matthews  
R. D. Maxey  
Dr. Earl Maxwell  
J. C. Maxwell  
Cliff May  
Richard R. May  
R. J. Mayer  
M. O. Mayes  
Mason Mayne  
Dewey Mayton  
Ken Noel  
Dan H. Nordstrom  
Allene A. Norman  
M. E. Norman  
Wirt M. Norris, Jr.  
Phil North  
David O'Brien  
Jack O'Dowd  
Jack Oliver  
Richard O'Neal  
Dr. H. Richard O'Neal  
Dr. May Owen  
Roger B. Owings  
Theron D. Oxley  
J. C. Pace, Jr.  
T. W. Painter  
W. C. Painter  
Earl P. Paris, Jr.  
H. M. Park  
Jack Park  
I. C. Parker  
Craig W. Parris  
Sam C. Parrish  
N. R. Parsons  
A. M. Pate, Jr.  
Mrs. J. D. Patton  
Jon M. Payne, Jr.  
Dr. G. F. Pease  
Mack Pegues  
Ted Penner  
Neville G. Penrose  
Cy Perkins  
Ralph Perry  
George A. Petters  
L. F. Peterson  
W. H. Peterson  
R. L. Pettit  
Jim R. Phillips  
Martin Phillips  
H. A. Pickens  
J. P. Pierce  
Don Pierson  
Reed Pigman  
William V. Plankey  
Leo Potishman  
H. D. Powell  
Mrs. Katherine Powell  
Luther Prescott  
B. K. Pressley  
Andrew F. Price  
Guy Price  
Mike Price  
Dr. R. V. Price  
W. H. Price

# MEMBERSHIP ROSTER

W. A. Moncrief, Sr.  
Vic Montgomery  
Charles G. Prior  
Mrs. Chas. G. Prior  
Ed Pritchard, Jr.  
Lewis A. Provasek  
J. E. Pulliam, Jr.  
M. A. Punchard  
Jess Purvine  
Francis Quinn  
Joe J. Radey  
Roy G. Ralls  
Jack K. Ramsay  
Paul Randels  
John Randol  
David H. Rankin  
Jack Rattikin  
C. W. Read  
L. L. Rector  
Cecil D. Redford  
E. P. Reed  
John H. Reed  
Oscar E. Reeder  
W. H. Reeves  
A. T. Remington  
A. A. Repper  
J. Allen Rhodes  
J. H. Richards, Sr.  
Dr. John H. Richards  
C. E. Richardson  
James E. Richardson  
Dr. Lloyd W. Richardson  
Dr. Robert C. Richardson  
Cyrus K. Rickel, Jr.  
Cyrus K. Rickel, Sr.  
Grover C. Riddle, Jr.  
Mrs. Freddie Ridings  
Paul O. Ridings  
Dan H. Ridings, Jr.  
Randell C. Riley  
Jesse E. Roach  
Walter P. Roach  
Wayne E. Roberts  
W. E. Robertson  
E. J. Robinett  
Marshall T. Robinson  
E. M. Rogers  
W. H. Rogers, Jr.  
Wm. E. Rogers  
Dr. Murray M. Rohman  
R. C. Roland  
Dr. O. B. Rominger  
M. A. "Mickey" Rose, Jr.  
Martin A. Rose  
Jack D. Rotman  
W. Allen Ribottom  
Matt Rudd  
V. G. Runkion, Jr.  
Dr. A. H. Rutledge  
David Ryan  
Edwin S. Ryan  
John C. Ryan, III  
W. T. Ryan  
John St. John  
Kathleen Salley  
T. C. Salmon  
Wm. T. Sanders  
Reagan Sayers  
Byron Scarborough  
Gordon Scarborough  
Hugh Scarborough  
Dr. Wm. C. Scheihing  
J. L. Schell  
C. E. Schermbek  
Stan Schiller  
Dr. H. W. Schmuck  
Paul Schneider  
H. Schroeder  
Harold Schweiss  
Claude T. Scott  
Howard S. Scott  
W. E. Scott  
Dr. Herman C. Sehested  
Harold Seimworth  
L. C. Senter  
P. O. Settle, Jr.  
R. R. Severs  
J. M. Shackelford  
Haywood Tucker  
J. F. Tucker, Jr.  
R. P. Turbeville  
Ben Turner

Carl Shanks  
Ogden K. Shannon, Jr.  
Bill Shaw  
Jack Shaw  
Ernest Sheehan  
J. R. Sherman  
Dr. Harold C. Shilling  
Nolan L. Shirley  
Dr. T. J. W. Shoemaker  
Guido Shumake  
Ray W. Silcox  
Craig B. Silverthorne  
Ellis L. Simmons  
Robert J. Sivals  
Liston W. Slack  
Jack Slate  
Geo. M. Slaughter, III  
Vernon H. Slocumb  
B. D. Smith  
Bert K. Smith, Jr.  
Mrs. Bert K. Smith, Sr.  
Garrett M. Smith  
J. Hubert Smith  
Marc B. Smith  
Myron A. Smith  
N. L. Smith  
W. T. Snipes  
Smith Spradling  
J. M. Spreklemeyer  
Rudy Stallings  
Charles R. Stanley  
Marion F. Stephens  
Lowell W. Stephens  
John C. Stewart  
W. L. Stewart  
Wm. Stoddard, Jr.  
Green Stoker  
Garner Stokley  
Dr. James G. Stouffer  
C. V. Stoughton  
James W. Stovall  
E. A. Strange, Jr.  
James Mack Strange  
Ernest Strange  
M. C. Strange  
D. J. Stubblefield, Jr.  
W. B. Stute  
C. T. Sumner  
Floyd E. Sumrow  
James E. Sutherland  
K. W. Sutton  
W. R. Swain  
W. H. Swain  
Agnes Talley  
Dr. E. D. (Snud) Taylor  
Emery Taylor  
Fred A. Taylor  
Kimmel Taylor  
Kirby Taylor  
Dr. Louis E. Taylor  
Ray Taylor  
Tom D. Taylor  
Scott Teel  
J. C. Terrell  
M. K. Terrell  
Dr. T. C. Terrell  
Curtis Thomas  
T. Thomas  
W. J. "Bill" Thomas  
B. V. Thompson, Jr.  
Geo. Thompson, III  
Leslie C. Thompson  
Jack R. Thomsen  
C. V. Thornton  
Dr. W. K. Thurmond  
Nancy Sharon Tilley  
Rice M. Tilley  
Dr. John P. Tipton  
Dr. David L. Titus  
A. L. Todd  
D. O. Tomlin  
George K. Towles, Jr.  
Jack W. Townes  
E. Morgan Townsen  
Ed P. Trout  
Haywood Tucker  
J. F. Tucker, Jr.  
R. P. Turbeville  
Ben Turner

Gean Turner  
Dr. Jack L. Turner  
Kellus L. Turner  
Loyd L. Turner  
W. E. Turner  
Thomas R. Tyler  
Wm. H. Tyler  
Julian Umbenhour  
Clarence E. Underwood  
Bill Van Fleet  
Jack Vaughan  
Dr. Ted G. Vaught  
Victor Venrick  
Phillip M. Vickery  
Guy C. Victory  
Paul A. Vinsant  
R. S. Waco  
Earl R. Waddell  
Furlo S. Wagner  
A. B. Waldron  
Dr. W. Earl Waldrop  
Curtis L. Walker  
Dr. Granville T. Walker  
J. M. Walker  
James M. Walker  
John R. Walker  
F. Howard Walsh  
John E. Walsh  
Bob Ward  
E. T. Ward  
G. G. Warren  
John H. Watkins, Jr.  
Olan E. Watkins  
W. R. Watt  
L. A. Wayman  
Wayne Waynock  
Sam H. Weatherford  
Sanford C. Webb  
Charles Weissenborn  
H. K. West  
T. C. West  
Dr. W. B. West  
John Whalen, Jr.  
R. S. White  
Dr. Wm. R. Whitehouse  
B. A. Whiteley  
Rahm E. Whiteley  
James M. Whitsett  
W. R. Whitten  
J. A. Whitworth, Jr.  
Chas. P. Widger  
Dr. John A. Wilgins  
Gordon Willey  
George S. Williams  
Jack K. Williams  
Joe F. Williams  
Mrs. Joe F. Williams  
Lawton Williams  
Morgan K. Williams  
Robt. W. Williams  
Mrs. Robert W. Williams  
Dick Williamson  
Doyle Willis  
Dr. Lawrence A. Willis  
J. C. Wilson, Jr.  
J. Vaughn Wilson  
R. F. Windfohr  
Joe E. Winter  
Dr. J. R. Winterringer  
R. B. (Bear) Wolf  
Hugh Wolfe  
Ernest N. Wolff  
Frank M. Wood  
Dr. Gene Wood  
R. W. Wood  
Z. T. Wood  
Charles Woodard  
Don Woodard  
V. E. Woodard  
Wheeler Worley  
R. R. Wortham, Jr.  
Ellis Wurzbach  
W. H. Wyatt  
Allott W. Yaden  
W. H. (Bill) Yancey  
Thomas L. Yates  
Mrs. Bruce Young  
V. W. (Buddy) Young, Jr.  
J. M. Zachary  
Robert Zodin

If Your Name Is Not on the

Join The Frog Club Now (See Next Page) and Help

Above List, It Should Be!

Make 1964-65 Another Record Year in Support at TCU



# YOU ARE INVITED TO JOIN



## THE FROG CLUB

### AN ORGANIZATION OF FRIENDS OF TCU

#### CAN ANYBODY JOIN THE FROG CLUB?

Yes, everybody can join The Frog Club.

—NOT JUST ALUMNI AND EX-STUDENTS OF TCU.

There are more members of The Frog Club who did not go to TCU than there are those who did.

—NOT JUST THOSE WHO CAN ATTEND FROG CLUB MEETINGS.

The great majority of Frog Club members never attend a meeting of the club.

The Frog Club is for everybody, especially those interested in sports.

IF YOU ARE A SPORTS FAN LIVING IN FORT WORTH, YOU SHOULD BELONG TO THE FROG CLUB because you know it is good for Fort Worth for TCU to have the best possible athletic program.

You can belong to The Frog Club and still cheer for your own school when it plays TCU. A lot of Frog Club members do.

IF YOU ARE A TCU FAN, NO MATTER WHERE YOU LIVE, YOU SHOULD BELONG TO THE FROG CLUB because this is the easiest and best way for you to support TCU's entire athletic program.

The Frog Club is purely and simply a booster organization for TCU Frog teams in all sports.

The Frog Club's sole purpose is to provide TCU's athletic program with every possible assistance (and "with no strings attached").

And, as explained in the first column, everybody in accord with this purpose is eligible for membership in The Frog Club.

Further, as explained in the third column, by joining The Frog Club, you will not only help sports at TCU, you will also "help yourself" to 10 big benefits of Frog Club membership.

#### HOW DO YOU JOIN THE FROG CLUB?

All you have to do to join The Frog Club is:

Make a contribution to The Frog Club (and your contribution is deductible for income tax purposes).

Contributions of from \$10 as a minimum to \$250 as a maximum are suggested.

Just ask yourself: How much do I want to help TCU athletics?

Then mail in your contribution with the reply form below. By return mail, you will receive your Frog Club membership card.

## USE THIS COUPON

#### HOW WILL YOU BENEFIT BY JOINING THE FROG CLUB?

**1** You and your family can attend (free) TCU's annual fall pre-season training game.

**2** You and your family can attend (free) TCU's annual spring training game.

**3** You will be admitted free to TCU's first home basketball game.

**4** You will be admitted free to TCU's first Southwest Conference home baseball game.

**5** You can attend The Frog Club's Monday luncheons (weekly in the Fall; monthly in the Spring).

**6** You and your family can attend The Frog Club's annual spring outing honoring all TCU athletes.

**7** You will be given special ticket purchase opportunities for TCU's out-of-town football games.

**8** You and your family can ride The Frog Club's chartered planes and busses.

**9** You will receive regular mailings to keep you fully posted on the Club and TCU.

**10** Most important, you will have the satisfaction of knowing that you have done your part to help sports at TCU.

THE FROG CLUB  
3467 West Rosedale  
Fort Worth, Texas 76107

☐ Herewith is my contribution of \$\_\_\_\_\_. Enroll me as a member of The Frog Club for the school year of 1964-65 (Sept. 1, 1964, through Aug. 31, 1965).

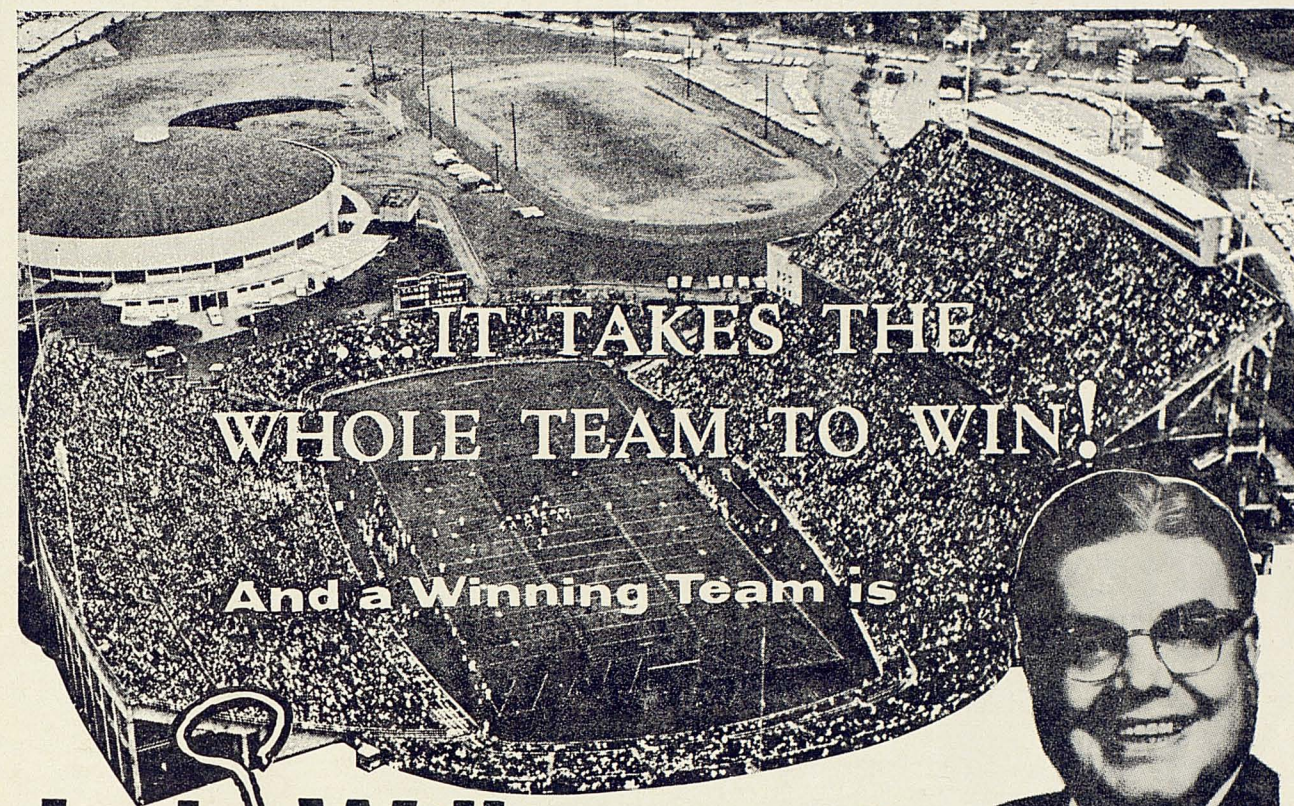
or

☐ I am interested in becoming a member of The Frog Club but would like more information, so please send me your free 20-page Frog Club Information Booklet.

Name: \_\_\_\_\_

Address: \_\_\_\_\_

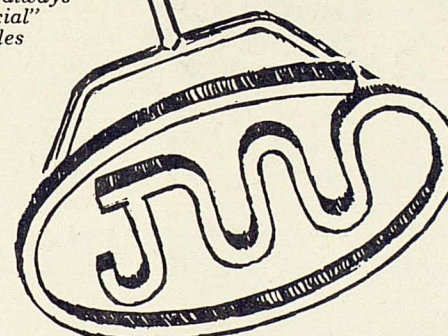
City, State and Zip Code: \_\_\_\_\_



## Jack Williams

## CHEVROLET

Where you always find a "special" brand of sales and service



"Nearly Everybody Likes Jack Williams Chevrolet"

### One Policy for All

We conduct a responsible business, according to the highest ethical standards recognized by the business community, to create a climate in which Quality Salesmen can better serve you.

We are dedicated to furnishing and maintaining proper facilities, equipment and physical surroundings which are in keeping with the job of Quality Salesmanship and service.

We strive to build public regard for this dealership and its salesmen by maintaining the highest level of advertising, promotion, service and a continuous program of owner satisfaction.

*Jack Williams* Dealer



1300 S. UNIVERSITY DRIVE • ED 6-0471





## PUT VITALITY ON YOUR TEAM!

Drink Milk, the Vitality Beverage! It's your ticket to vigor and verve that really lasts. And cool, refreshing milk helps keep you bright and in the fun game all day long. So heed the cheer for milk—"put vitality on your team!"



a message from dairy farmer members of  
**american dairy association**