

ALLUVIA

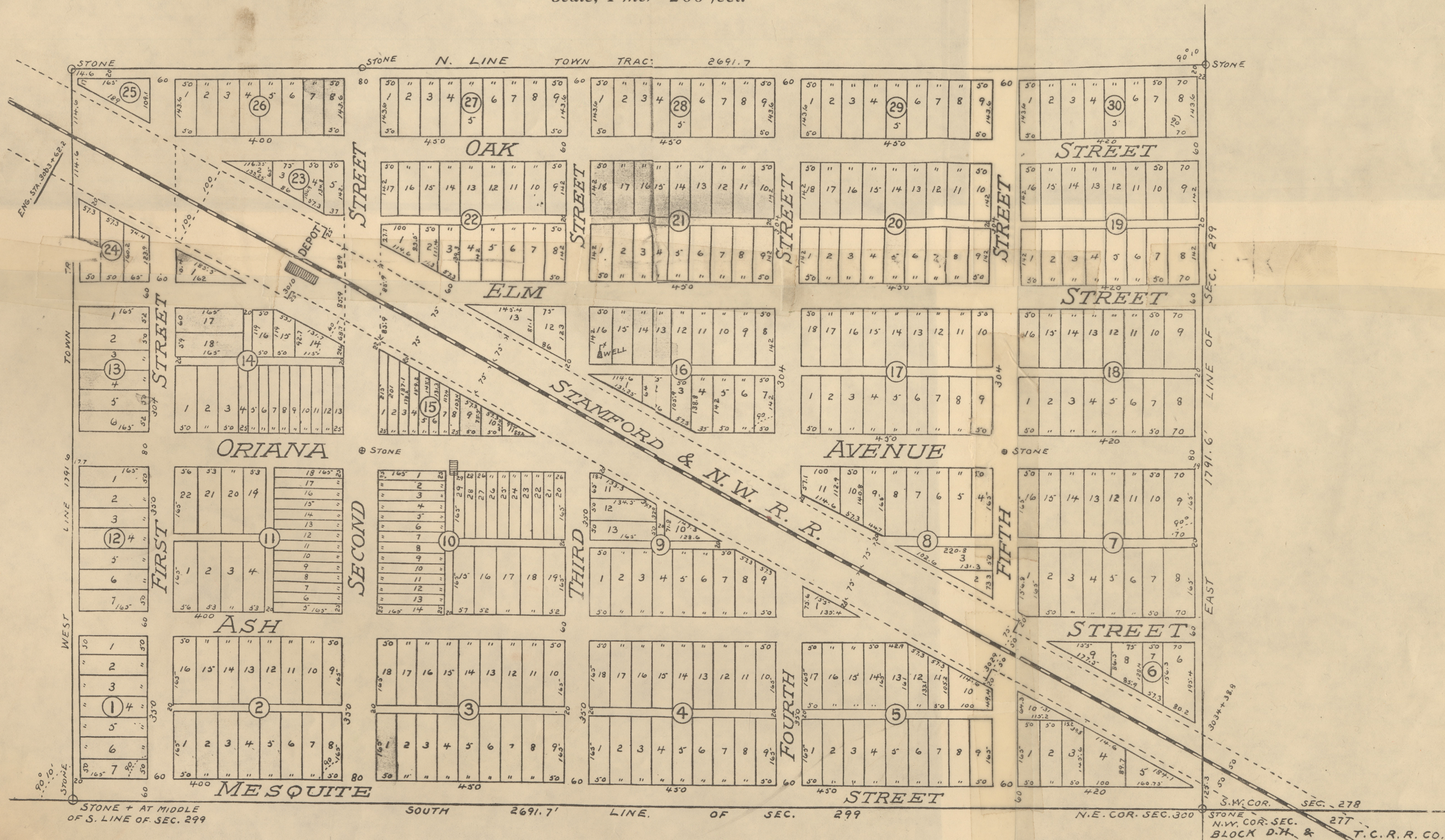
Out of S. E. Quarter of Survey 299, Block D, H. & T. C. R. R. Co.

THE STAMFORD AND NORTHWESTERN TOWNSITE COMPANY

Geo. M. Williams, Surveyor

APRIL, 1909.

Scale, 1 inch = 200 feet.



Invol 389 - lots Sold 102 -

287 lots to sell.