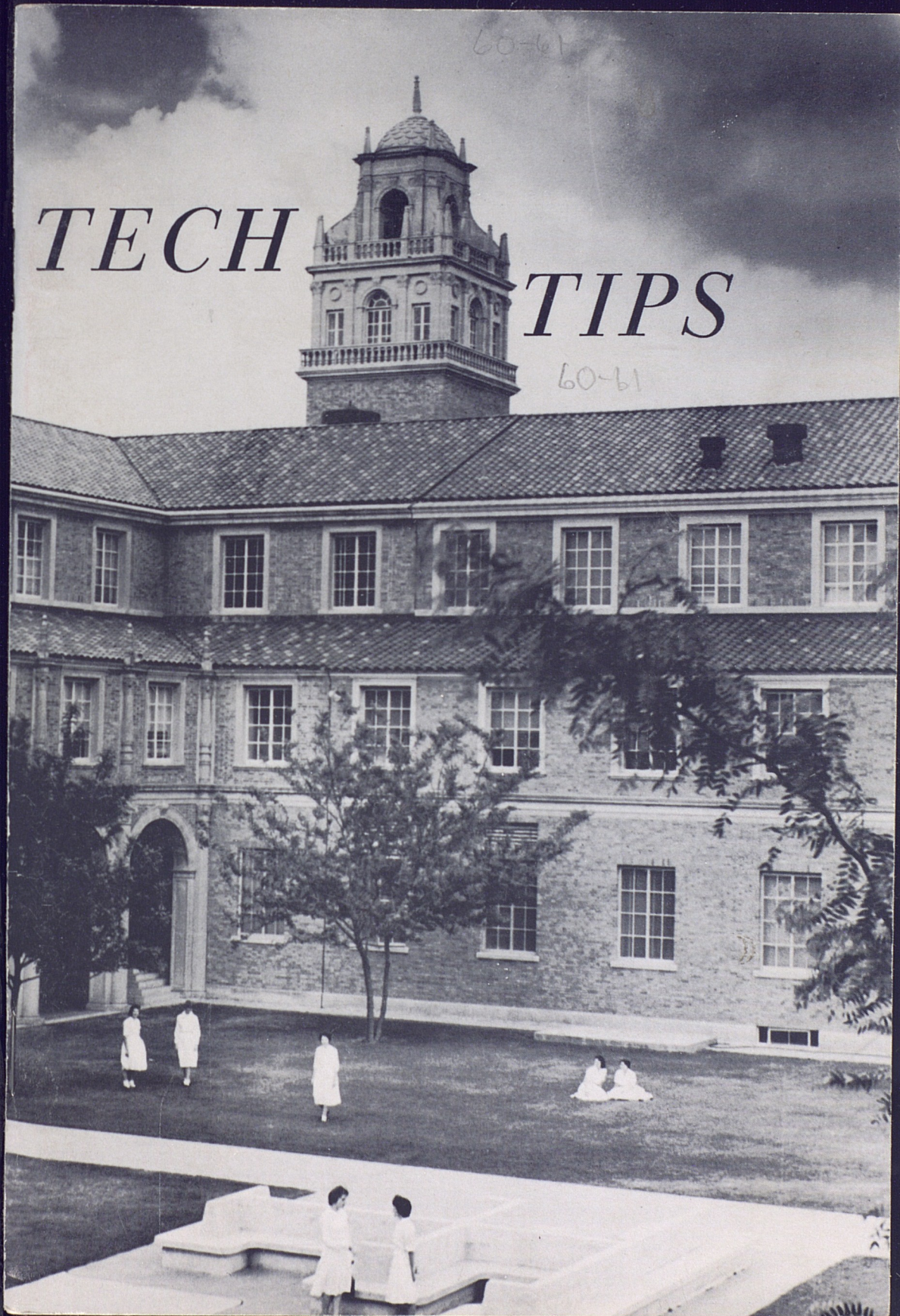


60-61

*TECH*

*TIPS*

60-61



THE ASSOCIATED WOMEN STUDENTS  
and  
PANHELLENIC COUNCIL  
of  
TEXAS TECHNOLOGICAL COLLEGE

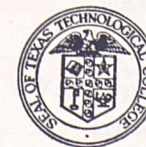
present

## TECH TIPS

### *A Handbook for Women Students* 1960-61

Staff: Theta Sigma Phi

Editor .....	Jennice Marks
Assistant Editor .....	Ellen Venable
AWS Section .....	Donna Christopher
WRC .....	Carolyn Jenkins
Honoraries .....	Merium Jackson
Sororities .....	Marilyn Gardner
Proofs .....	Mary Alice Cretsinger, Carolyn Mimms
Photographers .....	Mary Helen Fairly, Merium Jackson, Carolyn Jenkins
Cover Photograph .....	Travis Harrell



# Contents

Dean's Letter .....	3
Associated Women Students .....	5
Town Girls Club .....	10
Residence Halls .....	11
Casa Linda .....	17
Drane Hall .....	18
Doak Hall .....	19
Knapp Hall .....	20
Horn Hall .....	21
Weeks Hall .....	22
Honoraries .....	23
Alpha Lambda Delta .....	25
Junior Council .....	25
Mortar Board .....	26
Mu Phi Epsilon .....	26
Phi Gamma Nu .....	27
Phi Upsilon Omicron .....	27
Tau Beta Sigma .....	28
Theta Sigma Phi .....	28
Sororities .....	29
A Look at Panhellenic .....	30
Alpha Chi Omega .....	39
Alpha Phi .....	40
Delta Delta Delta .....	41
Delta Gamma .....	42
Gamma Phi Beta .....	43
Kappa Alpha Theta .....	44
Kappa Kappa Gamma .....	45
Phi Mu .....	46
Pi Beta Phi .....	47
Sigma Kappa .....	48
Zeta Tau Alpha .....	49
Appendix .....	50
Constitution and By-Laws of AWS .....	50
AWS Activities Point System .....	52



*Left to right: Dr. Florence Phillips, Dean of Women; Miss Jacqueline Sterner, Assistant Dean of Women; and Mrs. Dorothy Garner, assistant Dean of Women.*

TEXAS TECHNOLOGICAL COLLEGE  
OFFICE OF DEAN OF STUDENT LIFE  
LUBBOCK, TEXAS  
April 26, 1960

DEAN OF WOMEN

Dear Miss Techsan:

We are so happy that you are going to be with us this year. Our office is in the Administration Building. We hope that you will drop by to see us.

We are looking forward with a great deal of pleasure to knowing each of you personally.

Sincerely yours,

Florence Phillips  
Jacqueline Sterner  
Dorothy Garner



*AWS Officers: (Front row left to right) Mary Wallace, secretary; Judy Harris, third vice president; Ann Fursman, president; (Second row left to right) Ouida Daugherty, IAWS representative; Donna Christopher, second vice president; Judy Kay Jones, treasurer; (Back row left to right) Sue Mims, judiciary chairman; Kay Sharp, first vice president.*

Dear Miss Techsan,

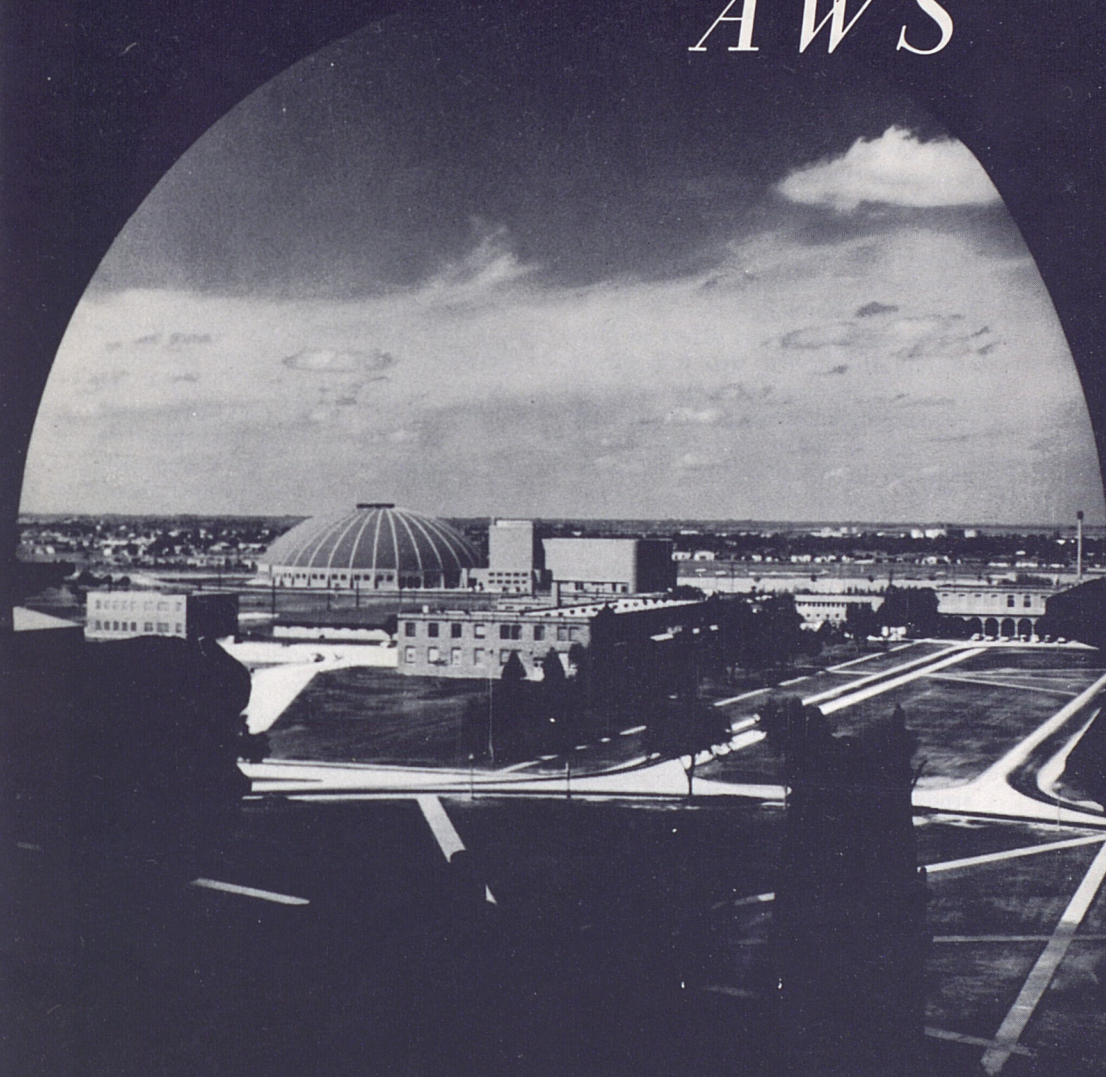
Welcome to Texas Tech on behalf of the Associated Women Students. With your enrollment in Tech you have become one of us and we hope that you will accept our invitation to participate in our many activities.

This next year at Tech is going to be a wonderful one! It is the first year that we will be a member of the Southwest Conference. The spirit and enthusiasm that will prevail on Tech's campus will be unequaled in all of our College's history. We are indeed fortunate to be members of the 1960-61 Student Body.

As the years progress you will have countless wonderful experiences, create many lasting friendships, and increase your knowledge and your desire for knowledge. AWS was formed to serve you as you advance in these experiences. We hope that we may truly be of service to you in the coming year and that this year may be one of your happiest!

Ann Fursman  
President, AWS

# AWS



## A TECHSAN'S LIFE

College means a number of things to you. It means fun-times, work and recreation, plus new friendships and new ideas. You are in for an enriching experience. And you'll want to take advantage of all sides of college — mental, social and spiritual.

Many individuals and organizations are eager to help you, especially AWS (Associated Women Students), WRC (Women's Residence Council) and Panhellenic Council.

The college campus offers so many avenues of activity, that it is easy to lose sight of our primary objective and become completely "wrapped up" in extra-curricular activities. So, remember, study comes first.

The student has few regulations outside of class hours, and must learn to budget his own time. A daily schedule allotting time for study and relaxation will be of valuable service, and you will gain real satisfaction, knowing that you have given the necessary time and effort to your studies.

A person with the ability to concentrate is well on the road to good study habits. Tips in developing this ability are: divide your study hours into short concentrated periods; keep your mind on your work; read rapidly; allot each piece of work a certain time and try to complete it in that time; work in surroundings conducive to concentration.

If you and your roommate study together in your room, it is wise to slip a "Do Not Disturb" sign over the door knob. As a freshman, 8:30 p.m. hours will help you give the proper times to studies.

By practicing good study habits and reviewing thoroughly before exams, the grade reports you send home will make you and your parents proud. So study hard, then relax!

College is filled with things to do and people to meet. Dating, campus

organizations, departmental clubs, dorm chatter, cokes in the SUB (Student Union Building) — all these are avenues of relaxation.

## A KEY TO CLOTHES

Now, what to wear — and when? Remember that simplicity is the key word to the Techsan's taste in clothing. For your convenience and easy access, note the Techsan Clothes Chart (page 7).

Other incidentals are brunch coat or short house coat; jeans or slacks; bedroom slippers; cottons for fall and spring; and a heavy coat for winter. The West Texas wind doth blow — and we usually have snow and rain, so bring overshoes. Incidentally, headscarves are a must at Tech to protect curls from Old Man Weather.

Be sure to bring a white dress, too. Each spring AWS sponsors Women's Day, and all coeds wear white.

The Techsan wears just enough make-up to give her a "wide-awake" look at that 8 a.m. class, and always dresses to suit the occasion. To complete the picture, she conducts herself properly, remembering that she represents her college.

## THE GENTLE ART

Equally important to the Tech coed as being well-groomed and well-dressed are manners.

We have learned that one of the best ways to get a lot of introductions is to give a lot of them. In order to introduce and meet people with poise, you will need to practice the techniques. If you want to brush up on the "how and when" here are some tips that may prove beneficial.

Always mention the woman's name first if a man and a woman are being introduced. Men always rise for introductions. Women rise only when

## A TECHSAN'S CLOTHES CHART

EVENT	DRESS	HAT	SHOES*	PURSE	GLOVES	COAT
Show Date	Sweater-Skirt	Never	Heels or Flats	A little one	No	If needed
Coke Date	Sweater-Skirt	Never	Flats	What for?	No!	Maybe
Dinner Date	Date Dress	Probably Not	Heels	Of Course	Probably	If needed
Church	Suit	Yes	Heels	Yes	Sure	In winter
Teas	Date Dress	Yes	Heels	Yes Ma'am	Absolutely	If needed
Football Games	Sport Dress--Suit	Sometimes	Heels or Flats	Optional	Maybe	Usually
Formal Dance	Something Swishy	Forget It	Sandals or pumps	Evening Bag	Yes Usually	Wrap
Class	Casual	Never	Loafers	Probably	Nope	If needed
Symphonies Stage shows	After 5 dress	None	Heels	Yes	Yes	If needed

\*comfortable

being introduced to an older woman, or when they wish to show special respect to a distinguished person. A woman may shake hands with a man, but must remember to extend her hand first.

When introducing a large group, mention names of men and women in the order they are seated or standing. In acknowledging an introduction, it is courteous to repeat the name (helps you remember it, too) and simply say "Hello" or "How do you do." A smile can express your friendliness better than words.

Friendliness on our campus extends to the faculty and older people. You can't underestimate what your courtesy and kindness to all older people will do for you.

Remember, as you're packing for Tech, to put in a smile and a friendly spirit, and take them out first when you arrive.

## THE COMMON GROUND

One more phase of college deserves special mention — spiritual growth. Many religious groups, affiliated with

Lubbock churches and located off-campus, offer worship, study and fellowship.

These groups include the Baptist Student Center, Canterbury Association (Episcopal), Disciples Student Fellowship (Christian), Newman Club (Catholic), Wesley Foundation (Methodist), Presbyterian University Center, and the Bible Chair (Church of Christ). You are invited to attend the group of your choice.

This last phase of your growth is best expressed in the AWS Women's Creed — "that of charity toward others and service to all."

## AWS IS FOR YOU

When you enroll at Tech, there is one organization of which you as a woman student automatically become a member. This is the Associated Women Students — known more simply as AWS.

The purpose of AWS is to help you and other Tech coeds to get the greatest benefits from college life by promoting unity and fellowship among women students and by providing

opportunities for leadership in worthwhile activities on campus. AWS acts as a coordinating body of all women's organizations in setting the standards for living and working together on campus.

## WRC

Women's Residence Council, a committee of AWS, is a coordinating policy-making organization for the women's residence halls. Members of WRC are the vice presidents and AWS representatives from each of the five halls and Casa Linda.

Regular problems dealt with by WRC include scholarship in the halls, communication to women students through wing meetings, residence hall constitutions, and hall hours and activities.

WRC sponsors an annual workshop in the spring for residence hall officers and a workshop in the fall for legislators.

## IAWS

Tech's AWS is a member of a large national association — the Intercollegiate Association of Women Students. Its membership is comprised of women's governing units in over 100 colleges and universities from coast to coast.

The purposes of IAWS are to foster the exchange of ideas and information on subjects of mutual interest to the member schools; to encourage a growing awareness of the responsibilities of women students in local, national and international affairs; and to work for the improvement of women's governing groups.

## AWS COUNCIL

Tech's AWS is governed by the AWS Council. This Council is com-

posed of eight officers elected by the women on campus, one representative from each women's organization, and a representative from each class. The Executive Council is comprised of eight officers: president, first vice president, second vice president, third vice president, secretary, treasurer, judiciary chairman, and IAWS representative. To understand exactly how AWS works, you are invited to attend any regularly scheduled Council meeting.

## PLANNED ESPECIALLY FOR YOU

"Never a dull moment . . ." And so it is with AWS. Its ever expanding activity program includes:

**BIG SISTER — LITTLE SISTER PROGRAM** — You will be adopted as a little sister long before you arrive on campus. Your big sister will write you during the summer and be here in the fall to help you get acquainted with campus life and to give you the benefits of her college experience.

**HOWDY PARTY** — This event is scheduled as a "get-acquainted" period during orientation week. All the women leaders on campus will be at this party to welcome you and tell you about extracurricular activities and women's organizations at Tech.

**FRESHMAN ORIENTATION PROGRAMS** — Each fall a series of programs are conducted concerning social problems such as manners, grooming, and dating. AWS Orientation Committee, the planning unit for these programs, builds the series around your wishes, and your ideas are especially welcome.

**DADS' DAY** — During the fall Dads are honored by a full day of activities including the football game and a welcoming coffee. AWS Dads' Day Committee and Alpha Phi Omega, national service fraternity, work together on the program.

**LEGISLATORS' WORKSHOP** — This fall a training retreat for all legislators in the residence halls will be conducted. Its purposes are to promote and improve student government in the halls and to evaluate the previous year's work.

**PENNY-A-MINUTE NIGHT** — Here's your chance to stay out one hour past closing hours — at the rate of a penny a minute. AWS usually sponsors two such nights each year.

**WOMEN'S DAY** — As a recognition day for women on our campus during the spring, you are urged to wear white to commemorate this special day. Tech's Outstanding Woman of the Year is elected and presented at the Women's Day banquet that night.

Other recognitions include installation of AWS officers for the coming year, introduction of the new members of Junior Council and Mortar Board, introduction of the new officers and legislators in the residence halls and scholarship recognitions.

## AWS ACTIVITY SYSTEM

In order to distribute the major offices and responsibilities of individual students more evenly, AWS has an activity point system. (See Appendix) The system is based on time consumption rather than prestige, and the maximum number of points is 25 for freshmen and 35 for upperclassmen.



*Left to right: Gail Westmoreland, treasurer; Lois Kershner, vice president; Marilyn Woods, secretary; Mary Jo McClain, president; Mrs. Emma Reeves, sponsor.*

### *Town Girls Club*

Girls who live off-campus sometimes worry about keeping in touch with campus affairs. Outside the classroom they may have little opportunity to take part in the many activities that are a part of college life. Town Girls Club was organized in 1953 with this in mind. Meeting at weekly luncheons in the Student Union these girls find many common interests and can catch up on the news of campus "doings."

Members of the faculty and administration are frequent luncheon guests and their informal talks with the girls help build closer ties with the college. Programs are scheduled that make use of talent among the girls as well as talent outside the club.

In honor of Mother's Day, those girls who lived at home invited their mothers to a luncheon. Those whose homes were not in Lubbock invited a friend or instructor who was a mother. Activities such as these greatly aid in making Tech seem more of a "home away from home."

## *Residence Halls*



## BE IN THE KNOW

So you're moving into a Tech residence hall for the first time. No doubt, there are many questions you'd like answered, so glue your eyes to the next few pages.

First of all, you're concerned about furnishing your room. Most girls wait until their arrival at Tech to choose curtains and bedspreads for then they know the colors and location of their rooms. If you plan to bring curtains from home, you'll need to know window measurements.

Drane Hall ..... 41 x 68 inches  
Horn Hall ..... 40 x 66 inches  
Knapp Hall ..... 40 x 66 inches  
Weeks Hall ..... 34½ x 68½ inches  
Doak Hall ..... 43-3/4 x 69 inches

Walls are made of plaster material thus necessitating the use of curtain rods which do not require nails. Suction cup rods may be purchased at Lubbock department stores.

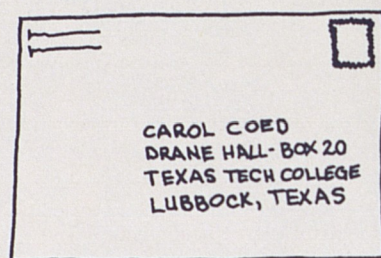
Some suggested objects to bring from home include iron, desk light, pillow, broom, mop, bulletin board, radio, record player, throw rugs and alarm clock. If you're living in Weeks, you will not need the desk light or bulletin board, as they are built in.

## HERE'S HOW IT'S DONE

Your MAIL is put up in a mailbox assigned to you when you register in the residence hall. Switchboard operators and office girls put up the mail which is delivered at noon and evening. Outgoing mail is collected at these times.

You will be notified by the Campus Post Office in the Administration Building if you have an insured package, registered letter, etc. Packages which are not registered are delivered to the hall.

Mail addressed to you should include the information shown on this envelope:



The DINING HALL is open for meal service as follows:

Monday through Saturday	Sunday
Breakfast 7:00- 8:00	8:00-8:45
Lunch 11:45-12:30	12:15-1:00
Dinner 5:30- 6:15	No Meal

There are LAUNDRY and drying rooms in each women's hall with automatic washers and dryers for your use. A quarter is charged to use washing machines and a dime for rotating dryers.

All needed REPAIRS should be reported to the switchboard or office. Each hall has its own Mr. Fixit to make repairs and fill such requests as replacement of electric light bulbs, etc.

A large STORAGE room is provided in each hall where trunks and luggage are stored. Check with your hall office for the key.

Local TELEPHONE CALLS are accepted from 8 a.m. to 10 p.m. through the hall switchboard. Pay phones in the game room or lobby of the halls are available at all times. Calls should be limited to five minutes.

LONG DISTANCE calls may be made only on the pay phones. They may be received, however, through the switchboard.

Familiarize yourself immediately with the BUZZER SYSTEM so you'll know what to do when that first one comes. The girl in the room whose last name comes first alphabetically will have the A buzz and the other one will have the B buzz.

A BUZZES are:

1 long ..... Telephone  
1 long, 1 short ..... Lounge

B BUZZES are:

2 long ..... Telephone  
2 long, 1 short ..... Lounge

## RESIDENCE HALL GUESTS

Students may have guests in the residence halls only on Friday and Saturday nights except by special permission given by the Assistant Dean of Women. All overnight guests must register in the hall office and a guest fee (with the exception of mothers of residents) of 50 cents is charged each guest. Guests maintain the hours of their student hostess. The hostess is responsible for the conduct of all guests and is also assigned any late minutes her non-resident guest might accrue. Guests sign in and out of the residence hall on a guest sign-out sheet.

When girls are guests in another hall the same procedure for signing out is to be observed as for any overnight in Lubbock. Resident students while guests in other halls are responsible for their own late minutes and are charged a 50 cent fee.

## RESIDENCE HALL ASSOCIATION

Every women's hall resident is automatically a member of the residence hall association, which has as its purpose as stated in the constitution, "to equip each student for active and cooperative citizenship through participation in democratic self-government."

Texas Tech's administration believes in student government and is glad to extend the privileges of self-discipline as far as the students themselves are capable of accepting the responsibilities which this incurs.

## RESIDENCE HALL LEGISLATURE

The official governing body of each hall is the Legislature, composed of girls elected each spring by the residence hall association. They live in specified rooms on each wing of the hall and represent the viewpoint of the girls of that wing in legislator meetings and are responsible for the welfare of their particular wing in the hall. They also relay notices from the counselor, dean's office, and AWS.

Legislator meetings are held every two weeks, alternating Monday nights with the Advisory Council. Wing meetings are held at 10 p.m. the Tuesday following legislator meeting. All residents are to attend wing and hall meetings.

## THE ADVISORY COUNCIL

The Advisory Council is the agency through which the rules of the hall are interpreted. This group advises the girls on hall regulations and policies. In each hall it is set up under the hall's student government. The purpose of this selected body is to hear cases of girls who have broken hall regulations.

## THE JUDICIARY COUNCIL

Those cases reflecting on the reputation of the college or those involving general college rules are referred to the Judiciary Council which is composed of three AWS council members and one member of a residence hall advisory council. Chairman of Judiciary is an elected AWS officer.

## RESIDENCE HALL REGULATIONS

### AWS AND WOMEN'S RESIDENCE COUNCIL

For safety and service, students are required to sign out if absent from the hall after 7 p.m. Each girl must sign in and out for herself. In emergency, or if you have failed to sign out, you may call your counselor or hall office to sign you out.

Do not open any doors before 6:30 a.m. or use the side doors after 7 p.m.

### A. REGULAR CLOSING HOURS ENTERING FRESHMEN

(until second semester)

Mon.-Thurs. Friday Saturday Sunday  
8:30 p.m. 12 p.m. 1 a.m. 11 p.m.

### UPPERCLASSMEN

10 p.m. 12 p.m. 1 a.m. 11 p.m.

### SENIORS

11 p.m. 12 p.m. 1 a.m. 11 p.m.

In order to be classified for these hours a sophomore must have 32 hours with 32 grade points; a junior must have 64 hours with 64 grade points; and a senior must have 90 hours with 90 grade points.



### B. WEEKEND AND OVER- NIGHT SIGN OUTS

A General Permission card signed by your parents, must be on file in the residence hall office before you are permitted to sign out overnight. It is each student's responsibility to know the permissions granted her by her parents.

Students do not spend week nights out of town or at home except in an emergency and with special permission from the hall counselor and/or the student's parents. Weekend nights are Friday and Saturday nights. All special permissions must be sent directly to the counselor from the parents. All sign outs must be approved.

### (1) WEEKEND OUTSIDE LUBBOCK

Fill out weekend slips in office before 8 p.m. File in box provided for this record. Sunday is included in the out-of-town weekend.

### (2) WEEKEND OR OVER- NIGHT IN LUBBOCK

Fill out form in hall office for Lubbock sign-outs before 4 p.m. so that your hostess may be contacted for confirmation of the invitation. Students may stay only

with families or married couples in Lubbock. Students must make sure the hostess has been contacted and her sign-out card approved by the residence hall before she leaves. Freshmen are permitted one week night Monday through Thursday per semester in Lubbock. Upperclassmen have three week nights per semester.

### (3) OVERNIGHTS FOR LUBBOCK FRESHMEN WHO ARE HALL RESIDENTS

Lubbock freshmen who are hall residents are allowed one regular week night out in town a semester plus only three week nights a semester at home.

### C. RETURN FROM VACA- TION OR WEEKEND

All students return to the hall from an official college holiday or weekend by 11 p.m. If in an emergency a student is delayed, she should call her counselor so that she will know the whereabouts of the student.

### D. SPECIAL PERMISSION

Counselors may grant special permission for the following events:

(1) Students attending college-sponsored events that run past 10 p.m. These events include college plays, and college sports events.

(2) Students desiring to attend outstanding community events NOT under the auspices of the College.

If the event is held on campus, students are expected to return to the residence hall 20 minutes after the close of the performance. If the event is off campus, time is 40 minutes after the close of the event.

### E. EMERGENCY PERMISSIONS

In an emergency or an unusual happening, the counselor may grant special permissions.

### F. QUIET HOURS

Quiet hours must be maintained with the following exceptions:

11:30 to 1 p.m. Lunch hour

5 to 7 p.m. Dinner hour

"Reasonable" quiet must prevail at all times. Twenty-four quiet hours are always maintained during examination periods.

### G. WRC AND AWS REGULATIONS

For failure to cooperate with the residence hall or other AWS regulations, the student may be asked to appear before the Advisory Council of the hall. The Council has the authority to decide on the restrictions of a student's social privileges.

### H. MEN CALLERS

Men callers are not permitted to visit in women's residence halls until after the lunch hour. Men, however, may come into the lobby to call for a girl after 8 a.m. Monday through Saturday. Sundays, men may visit in the lounge after 8:30 a.m.

### I. SOCIAL CONDUCT

Tech women do not wear bluejeans, treader pants, or bermuda shorts in the residence hall lounge, Tech Union, or Academic Buildings including the Library. The exception to this rule is that casual clothes may be worn to labs with the permission of the instructor.

Casual clothes may be worn in the informal lounges of the halls which have them. Students should dress appropriately in the dining hall. Shorts, bluejeans, brunch coats, bermuda shorts, or houseshoes are not worn. The exception to this rule is Saturday, "casual dress" day, when bermudas, jeans and treader pants are permitted in the dining halls; and other occasions when specified. Casual dress does not apply at lunch and dinner when there is a home football game.

Tech women are in accord with Emily Post in believing that good

taste is consideration for others. This includes remembering that even though Tommy Techsan may be the "love of your life," public display of your affection is embarrassing to others. Therefore, obvious display of affection is extremely bad taste and it is not permitted in the lounge, lobby, or entrances to the hall.

You should show your consideration for the other residents by not cutting in line in the dining hall.

#### J. COLLEGE REGULATIONS

(1) The college prohibits the possession or consumption of alcoholic beverages on the campus or in college buildings, and in student residences, both on campus residence halls and off-campus housing. Students are held individually responsible for compliance with this regulation.

(2) Selling, or peddling, or offering for sale is strictly prohibited on the campus and in college buildings without permission from the Comptroller of the College. Permission to sell in the residence halls will be granted only with the approval of the Assistant Dean of Women or Assistant Dean of Men and the Comptroller. Any person selling on Tech campus should be asked to show a written statement of permission to sell,

signed by the Vice President and Comptroller of the College.

### AWS REGULATIONS

#### MEN'S RUSH PARTIES

(1) Except as hostesses, Tech women are not permitted to attend men's fraternity rush parties (no more than 11 hostesses at each party.)

(2) Tech women may not act as cigarette girls at any men's organizations on campus.

#### SERENADES

The fraternity or other organization desiring to serenade should contact the residence hall counselor by 5 p.m. of the Wednesday night the serenade is planned and report the time within 5 minutes when they will serenade, in order to avoid conflicts with other serenading groups. Serenades shall begin at 10:10 and 10:40 p.m. and they must be over so that girls may be in their respective halls by 11 p.m. Late minutes will be given a girl who returns after 11 p.m.

Lubbock girls may be serenaded at one of the women's halls not already reserved by a hall resident.

Phi Mu Alpha, music fraternity, has special permission to serenade on Tuesday night.



Left to right: Verna Ruth Liles, assistant business manager; Darlene Lemons, business manager; Darleen Heitkamp, president; and Sandra Dowell, house director.

### Casa Linda

"Always sisters" is the motto of the eighteen girls who live in Casa Linda, Tech's only cooperative residence hall.

Located on the corner of 19th and College, the spacious home has a large living room, dining room, kitchen and laundry with six bedrooms. The basement has been converted into a combination study and storage room.

At Casa Linda schedule of duties is made out each week and by performing all cooking and housekeeping chores, the girls are able to cut living expenses while in college.

Girls who live in Casa Linda are a select group, chosen by the Dean of Women. Although the waiting list is usually well-filled, there is a large turn-over of residents who leave mainly to get married.

Two groups of officers are elected to serve the members of Tech's co-

operative house. The social director, business manager, and assistant manager comprise the administrative division. The social director assigns duties and serves in a general advisory capacity. Since Casa Linda abides by residence hall regulations, she also assumes responsibility for proper adherence to these rules. Casa Linda girls have no house mother, so they govern themselves and are strictly on an honor system.

The business manager and her assistant plans meals and purchase supplies.

Executive officers of Casa Linda are a president, vice president, secretary-treasurer, and historian. They look after the smooth functioning of the organization, with the president serving as AWS representative.

This year Casa Linda girls will serve as secretary and treasurer of the Women's Residence Council.



Standing: Anne Weaver. Left to right: Marian Wooldridge, Chlois Cawley, Cindy Richards.

#### OFFICERS

President ..... Anne Weaver,  
sophomore education major  
Vice President ..... Chlois Cawley,  
sophomore liberal arts major.  
AWS Representative  
..... Cindy Richards,  
sophomore elementary education  
major.  
Chaplain ..... Bettye Aston,  
sophomore liberal arts major.

## Drane Hall

You're a freshman and you're moving into Drane Hall. What a fun way to begin a college career!

Facing College Avenue, Drane has long been looked to as "the place where all those cute freshman girls live." To its 300 residents, however, it is also a welcome haven of rest from those bewildering complexities of year number one in college.

Life at Drane is especially geared to the freshman who wants to get the most out of her initial year yet live in an atmosphere comparable to home.

The Drane year begins with a quick succession of mixers with men's halls, all-dorm parties and impromptu get-togethers. So come prepared for a fast pace.

Be prepared too for study hours which are kept from 8:30 to 10 p.m. nightly in Drane. After the supper hour, the Drane cafeteria becomes a study hall for those who want absolute quiet while studying for that first zoology quiz.

Early in the fall, AWS presents a series of programs at the hall designed to help freshman become orientated in the many activities for women here at Tech, and to answer questions about such problems as campus etiquette, grooming and the like.

Once a week, Drane residents gather in the large, well-used lounge for a short devotional after 10 p.m. Many times, the devotional is followed by a pajama song-fest around the piano.

Each year, the freshmen of Drane Hall, with a little help from sophomore legislators, compose a song from ol' Drane Hall.

We'll be looking for you to come with a song on the tip of your tongue and a readiness for a wonderful first year at Tech.

## Doak Hall

You've heard about the old ivy-covered hallowed halls in Eastern colleges. Well, you don't have to go to the East to find one. Doak is the perfect example of old-time collegiate loveliness, placed at the end of a long walk under an alcove of trees.

The most centrally located of all women's halls, Doak is just southeast of the Home Economics building and is in quick walking distance to the Bookstore, Tech Union, Ad building, circle and all buildings beyond. It is connected to the other upperclasswomen's hall, Weeks, and shares a joint cafeteria with Weeks Hall.

One of the first buildings on campus, Doak was originally a women's hall, but housed men during World War II until the fall of 1958. At this time Doak was redecorated and its facilities were returned to the women.

With rooms for approximately 300 upperclassmen, the hall was named for Mary Doak, first Dean of Women at Texas Tech.

Doak Hall coeds, conscientious studiers all, have their own study hall, which is a transformation of the old cafeteria, and an annual rose scholarship dinner for women with 2.0 grade average.

The spacious second floor lounge is a daily gathering spot for Doak girls and their dates. A television and piano offer welcome diversion in the after-hours, and the lounge is the spot of frequent holiday and birthday parties. Doak also boasts its own kitchen for these parties.

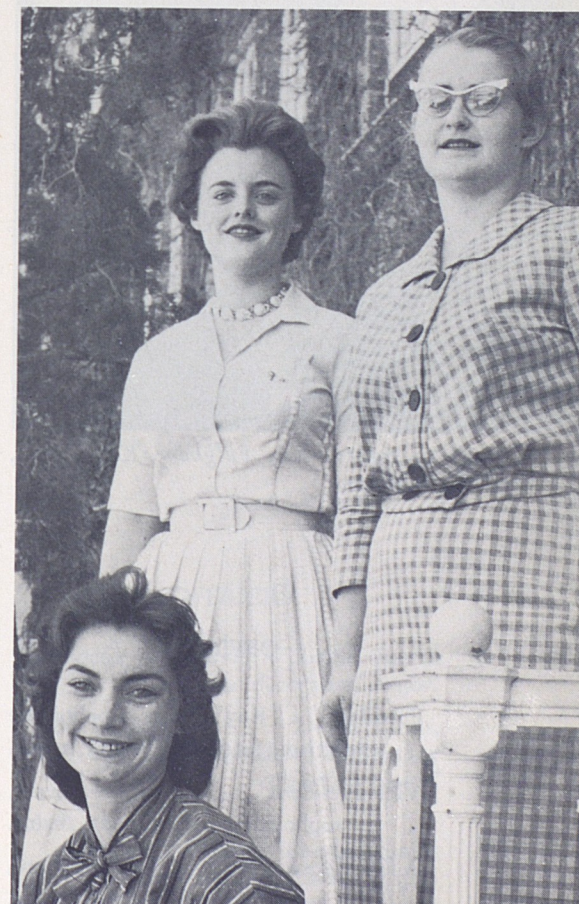
As you walk in the door of Doak, a bulletin board greets you, filled with newspaper clippings of the activities of Doak women.

Sounds great, doesn't it. And it is. You'll love Doak Hall just as much as we do. See you soon in the hallowed halls.

#### OFFICERS

President ..... Sue Mims,  
senior secondary education major.  
Vice President ..... Nancy Harmon,  
senior secondary education major.  
AWS Representative ..... Joan Dorris,  
junior elementary education  
major.

Seated: Nancy Harmon. Standing: Joan Dorris, Sue Mims.





Left to right: Kay Fulgham, Kay Kagay, and Anne Mason.

#### OFFICERS

President ..... Kay Kagay, sophomore advertising arts and design major.  
 Vice President ..... Anne Mason, sophomore government major.  
 AWS Representative ... Kay Fulgham, sophomore Spanish major.

## Knapp Hall

Welcome to Knapp Hall — home base of some 350 active Tech freshmen!

And a great base it is for your first fun-filled, confused, exciting year of college. The gameroom with its TV set, the mixers with men's halls, "bull sessions" in the next room, answering your first buzz — these are just a few things you'll remember from Knapp Hall.

A memory which will be renewed at each Christmas season is that of the Knapp Doll House, for which you will collect dolls for the Toys for Tots Campaign.

In the Spring you'll probably relax on the green between Knapp and Horn, official sun bathing area for all of Knapp's beauties.

In the Fall, you'll be hanging the weekly spirit banner from the balcony. And nightly, you'll be enjoying 8:30 to 10 p.m. study hours.

Three of your annual functions are teas, given at Christmas, Easter and Valentine's Day.

You'll especially like the spirit of cooperation and friendliness which pervades Knapp Hall — a spirit you can feel and to which you will contribute.

We'll be ready and waiting for you this September with all your loot and luggage. The boys will be waiting too. They love to help Knapp girls move in.

## Horn Hall

With all the enthusiasm of a freshmen hall and the maturity of an upperclassmen dorm, we greet you from Horn Hall.

Adjacent to Drane and facing College Avenue, Horn is a big and friendly home for both freshmen and upperclassmen alike.

Horn has both a formal lounge, for welcoming male visitors and the parents, complete with a television for watching the late-late show, and an informal lounge which is used for study get-togethers and visits in Bermuda shorts.

There are all-dorm parties on Halloween, Christmas and Easter, exchange dinners with men's halls on Sundays and occasional mixers for mid-week dancing.

A birthday is never forgotten here either. Each month a special table is arranged in the dining room for girls with birthdays during that month, and ice cream and cake are served them.

Horn is especially proud of its own newspaper, "The Horn Bugle," which is written and printed by a resident staff monthly. Another "extra" for Horn girls is a set of encyclopedias which spare the Horn coed that long walk to the Library.

Perfect for serenading is the Horn Hall balcony. Members of the sorority being serenaded and spectators watch the pinned couple from the balcony as members of the fraternity sing below.

Glad you're going to hang your hat with us this fall. We'll be looking for you.



Top to bottom: Evie Williams, Glenda Johnson, Diann Davis.

#### OFFICERS

President ..... Evie Williams, junior interior decoration major.  
 Vice President ..... Diann Davis, sophomore elementary education major.  
 AWS Representative ..... Glenda Johnson, junior elementary education major.



*Left to right: Ann Montgomery, president; Celeste Ullrich, AWS; and Janet Johnson, vice president.*

## *Weeks Hall*

The closest thing to the Statler we have to offer is Weeks Hall, Tech's newest women's residence hall.

As you move in this fall, Weeks will be opening its doors for the fourth year.

Designed for beauty as well as livability, rooms in Weeks have individual color schemes with matching lavatories and study lamps, built-in closets, drawers and desk. Beds roll away into a couch for day time lounging, perfect for that after-lunch bridge game.

Since Weeks is the nearest women's hall to the "Avenue," you'll probably be darting to cleaners, drug store, and campus grill several times a day.

Just off the main lobby is a place for entertaining your visitors and parents. An informal lounge connecting our hall with Doak Hall is the place for studying with boy-friend during the day and watching Jack Parr at night.

You'll probably want to know how your hall was named. So just in case you're asked, you can say that it was named for Miss Margaret W. Weeks, dean emeritus of the Home Economics School.

We're in the midst now of building traditions for Weeks Hall and we're looking forward to your helping us. See you soon!

# *Honoraries*



## Special Recognition

It is only natural that some students excel in their studies; and Tech, like most other colleges and universities, wants to recognize them. A number of organizations bearing the name of honoraries serve this purpose. They may be divided into two types. The first is the all-school honorary which is open for membership to all top students in the College regardless of their field. The second type is the more specialized organization which invites only those students excelling in a particular field.

By means of the honorary, excellent students are recognized and membership in any one of them signifies a high achievement to any girl. The organizations within this category on the Tech campus are listed for your study and consideration.



Judy Stewart



## Alpha Lambda Delta

Membership in Alpha Lambda Delta, national honorary fraternity for freshmen women, is extended to coeds who have 15 semester hours to their credit. They must also have a 2.5 grade average for the first semester or average a 2.5 during both semesters of their freshman year.

An Alpha Lambda Delta at Tech is a member of the national organization which has grown from one small band of women at the University of Illinois in 1924, to a total membership of nearly 25,000 members with 71 chapters in 1953.

Through her association with the honorary group, the Tech freshman will learn to appreciate and promote intelligent living, a high standard of learning plus encouragement of superior scholastic attainment.

The Tech chapter of Alpha Lambda Delta gives an annual tea each fall for all freshmen women. New initiates are honored at a spring banquet given jointly with Phi Eta Sigma, national honorary fraternity for freshmen men.

### OFFICERS

President ..... Judy Stewart  
Vice President ..... Mary Gail Nagai  
Secretary ..... Anne Weaver  
Treasurer ..... Carla Jean Newsom

## Junior Council

A red weskit lettered with a white "J C" indicates a Tech woman who has received the highest honor which can be conferred upon a junior woman.

Junior Council, one of the oldest women's organizations on the campus, chooses for membership each year twenty outstanding women who have excelled in scholarship, leadership and dependability while at Tech. A prerequisite for membership is a 2.0 grade average.

The group undertakes many service projects throughout the year, such as aid in counting and collecting ballots in campus elections, and giving a tea for all women transfer students.

### OFFICERS

President ..... Mary Jo McClain  
Vice President ..... Ginny Johnson  
Secretary ..... Susan Craig  
Treasurer ..... Nancy Jo Mankins  
Historian ..... Phyllis Reed  
AWS Representative .....  
..... Sydney Edwards



Mary Jo McClain

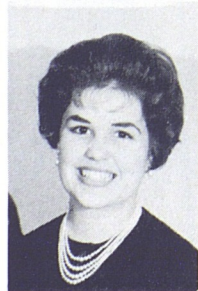
## Mortar Board

A Tech woman, chosen for membership by Mortar Board becomes one of a select group from all fields, who have banded together for the development of a finer type of college woman.

The honorary society for senior women, was founded at Tech in 1927 as a local organization under the name of Forum. It became affiliated with Mortar Board nationally in February of 1957.

Founded in 1918, Mortar Board, now has 102 chapters on college and university campuses in the United States. Promotion of college loyalty, and advancement of the spirit of service and fellowship among university women, are the purposes of the organization. Further goals include promoting and maintaining high standards of scholarship and recognizing and encouraging leadership.

New members of Mortar Board are selected each spring from undergraduates who will have completed their junior year by the following September. These girls, number from five to twenty-five and must meet the standards of scholarship, service and leadership set by the group. They are "tapped" in an April ceremony in which Mortar Board members, dressed in academic caps and gowns, form a chain and go from class to class placing the traditional black collar about the shoulders of chosen members.



Nancy Baldwin



## OFFICERS

President ..... Nancy Baldwin  
Vice President ..... Anne McElheney  
Secretary ..... Julianne Loomis  
Treasurer ..... Sue Mims



Sue Dixon



## Mu Phi Epsilon

Tech women with a "knack" for music as well as for making outstanding grades will most likely find membership in Mu Phi Epsilon both enjoyable and rewarding.

The national professional music sorority for women was founded at the Metropolitan College of Music in Cincinnati, Ohio, on November 13, 1903 and installed at Texas Tech in 1952.

Members of Mu Phi Epsilon must have a 2.0 grade average and possess qualities of musicianship, leadership and friendliness.

Tech's Epsilon Pi chapter supports musical productions and performances of individuals in the glee club, and recitals on and off the campus. An annual scholarship is presented by the group to a talented and deserving member.

The purpose of Mu Phi Epsilon is the furtherment of music through service projects and activities.

## OFFICERS

President ..... Sue Dixon  
Vice President ..... Kathleen LaMar  
Recording Secretary — Gracie Russell  
Corresponding Secretary ..... Linda Béene  
Treasurer ..... Kay Hoelscher



Suzanne Stafford

## Phi Gamma Nu

Through Phi Gamma Nu, Tech women majoring in business administration further interest in civic and professional enterprise and encourage high scholarship and participation in college activities.

The national and professional sorority for women in business administration, was established on the Tech campus in 1949 as Lambda Chapter.

A pledge of Phi Gamma Nu must be a woman student working toward a degree in business administration, who has a 1.5 grade average. She must also have completed a minimum of six hours in commerce.

Activities sponsored by Lambda chapter include annual selection of a Mr. Executive, from the business faculty on campus. Visits are also made to various business firms in Lubbock and semi-annual banquets in the fall and spring are scheduled by the group.

The senior coed majoring in business administration with the highest scholastic average receives a scholarship key each year.

## OFFICERS

President ..... Suzanne Stafford  
Vice President ..... Beckie Weddle  
Secretary ..... Martha McDaniel  
Treasurer ..... Mary Cole  
AWS ..... Betty Davis

## Phi Upsilon Omicron

Members of Phi Upsilon Omicron are chosen from women majoring in home economics, who have completed the second semester of their sophomore year and have an over-all grade average of 1.8 or better.

The honorary fraternity bases selection on character, scholarship, leadership and campus activities, as well as interest in home economics.

The activities of the organization give meaning to the stated purposes of strengthening the bonds of friendship, promoting the moral and intellectual development of its members and advancing and promoting home economics.

Each year the group contributes to the Phi Upsilon Omicron scholarship, and supports local welfare and alumni projects. Two teas are given annually, one for freshmen in home economics and a Founder's Day Tea.

## OFFICERS

President ..... Lynnell Fouts  
Vice President ..... Elizabeth Lyle  
Recording Secretary .....  
..... Nancy Lowery  
Treasurer ..... Carolyn Murphy  
Corresponding Secretary .....  
..... Jane Williams



Lynnell Fouts



Jeanne Newman



## Tau Beta Sigma

Bandwomen at Tech have a group all their own. Tau Beta Sigma, national honorary fraternity was founded at Tech in 1939 to bind together the interests of the many girls in college bands today.

It is the only group on this campus to have had its national beginnings right here, and plans to set up a shrine dedicated to its foundation, in the near future.

The group was founded on the same principles as Kappa Kappa Psi, national fraternity for bandmen. To become a member of Tau Beta Sigma the coed must be a member of the Texas Tech Band and have a 1.0 grade average from the semester previous to her initiation.

Although Tau Beta Sigma was founded at Tech, Alpha Chapter is located in Stillwater, Oklahoma, because the national headquarters of the fraternity is at Oklahoma State University.

A charter was granted to Tau Beta Sigma on March 26, 1949. On May 4 of the same year Beta Chapter was installed on the Tech campus with 35 charter members.

### OFFICERS

President ..... Jeanne Newman  
Vice President ..... Frances Dietrich  
Secretary ..... Ann Wilking  
Treasurer ..... Norma Harter

## Theta Sigma Phi

In April of 1909 a small group of women interested in journalism banded together at the University of Washington to further their common interest and set a standard for women in journalism.

They founded Theta Sigma Phi.

Today, Alpha Upsilon Chapter, on the Tech campus functions actively in service and entertainment projects for the campus. Fall projects include Tech's Most Handsome Man contest, which is climaxed by Club Scarlet, a mock night club at which the contest winner is presented.

Theta Sigma Phi also assists the Journalism Department in hosting a departmental coffee for ex-students at Homecoming.

In the spring, members sponsor the Best-Dressed Coed Contest, aid AWS in editing of Tech Tips, and commemorate the founding date with an April Matrix Table Banquet. An outstanding woman journalist is brought to Lubbock as speaker for the occasion.

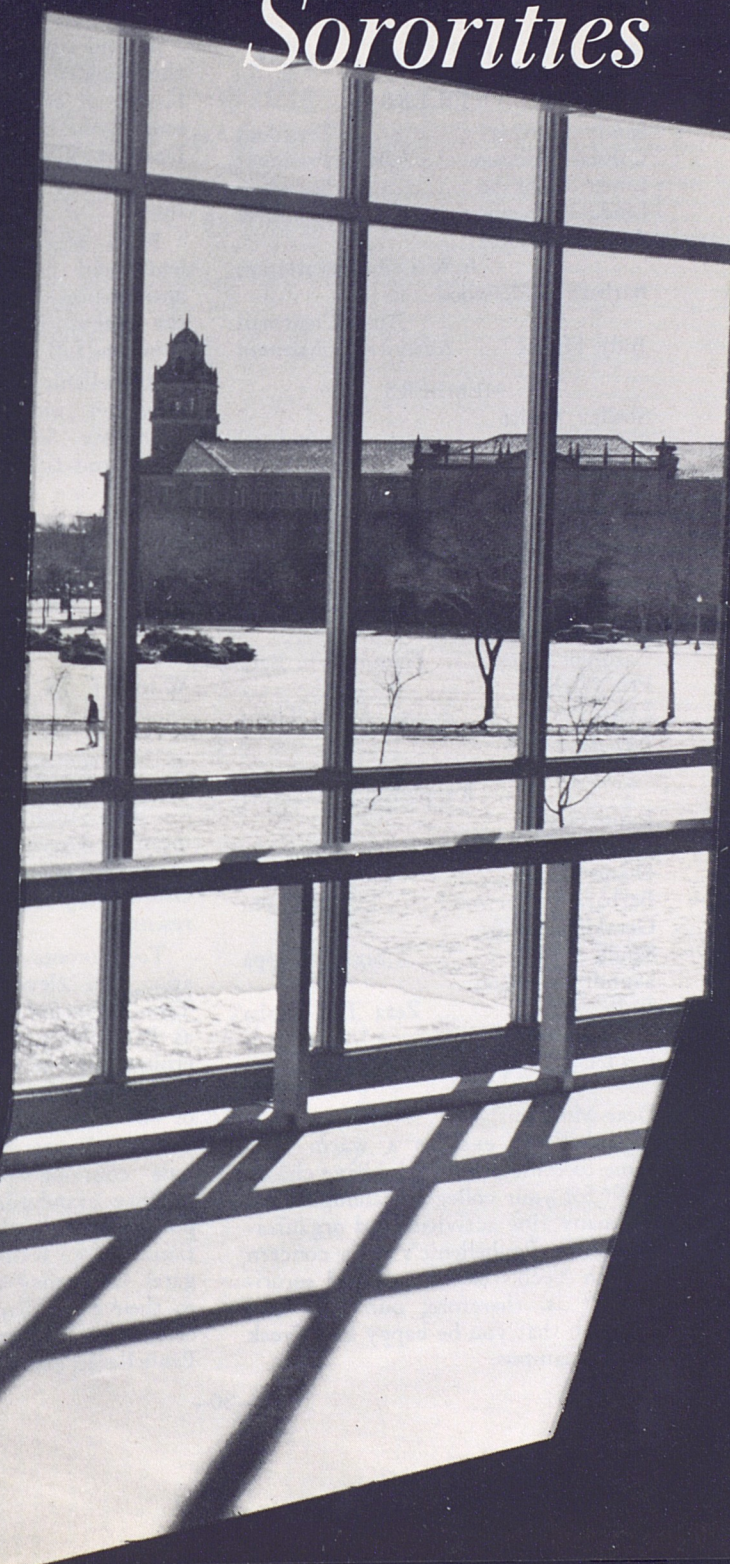
### OFFICERS

President ..... Jennice Marks  
Vice President ..... Ellen Venable  
Secretary ..... Donna Christopher  
Treasurer ..... Merium Jackson  
Historian ..... Mary Helen Fairly



Jennice Marks

# Sororities



## A Look At Panhellenic

### PANHELLENIC COUNCIL

#### OFFICERS

Sandy Miltzer	President
Carolann Pinson	Vice President
Linda Anderson	Secretary
Linda Hancock	Treasurer
Ann Jaroszewski	A.W.S. Representative
Barbara Underwood	Rush Chairman
Judy Harris	Activities Chairman

#### MEMBERS

Shelley White	
Susan Craig	Alpha Chi Omega
Linda Anderson	
Linda Ryno	Alpha Phi
Judy Harper	
Beverly Brown	Delta Delta Delta
Ann Jaroszewski	
Marilyn Galloway	Delta Gamma
Linda Hancock	
Carolyn Vines	Gamma Phi Beta
Pris Nichols	
Lynn Pray	Kappa Alpha Theta
Kay Edwards	
Carolann Pinson	
	Kappa Kappa Gamma
Lynn Gast	
Vina Mayfield	Phi Mu
Diane Terrell	
Barbara Underwood	Pi Beta Phi
Geraldine Lokey	
Sandy Sellers	Sigma Kappa
Saundra Davison	
Judy Harris	Zeta Tau Alpha

### PRESIDENT'S LETTER

Dear Miss Rushee,

Panhellenic extends a warm welcome to those of you who have chosen Tech for your college. Although there are many fine activities and organizations here, Panhellenic's main concern is with Tech's eleven national sororities. It is, therefore, our duty and our wish that you be happy as a Greek on our campus.

If you read the following pages in this booklet, you will learn a general history of each of our sororities, plus some good tips on Rush Week. The Dean of Women's office will be glad to help you with any further questions.

Rush Week is an exciting experience and promotes much fun and anticipation for both the rusher and the rushee. Be natural and relax to gain the full benefit.

Panhellenic is eagerly waiting to meet and guide you through this new experience. So until the fall, have a happy and fulfilling summer.

Sincerely,

Sandra Miltzer, President  
Panhellenic Council

### WHAT IS PANHELLENIC?

One of the most important names in the Greek world is Panhellenic. The word is derived from the Greek roots — "Pan" meaning all, and "hellenic" meaning Greek. Thus, Panhellenic is an organization in which all national Greek letter social sororities are represented.

To promote inter-sorority cooperation, the eleven sororities at Texas Tech are members of a group known as Panhellenic Association. The governing body of the organization is the Panhellenic Council which is made up of two delegates from each sorority.

The delegates meet regularly to discuss common problems concerning sorority standards, scholarship, campus activities, and inter-sorority functions. Before action is taken, the delegates have time to present questions to their own chapters so that all sorority members have a part in final Panhellenic decisions.

### WHAT IS RUSH WEEK?

Rush week is a period during which women's social groups entertain potential sorority women, or "rushees," prior to pledging new members.

It is the desire of Panhellenic, and of each individual member of sororities that each girl who is interested in belonging to a sorority shall find the group that fits her personal needs.

Friends and relatives are not going to be with you, so remember it should be your choice, not someone's else. Many parties are held during rush week in the hope that the sorority members will come to know many rushees personally, and that the rushees will become acquainted with them. When prospective members, as guests, go through rushing, they see the gay side of sorority life, but it must be remembered that there is much seriousness and responsibility involved in being a good sorority pledge or member.

### WHAT ARE SORORITIES?

#### ACTIVE CHAPTERS

There are eleven sororities on the campus of Texas Technological College. Each sorority has the same purpose — to teach its members leadership through group experience and how to work and play with others under all circumstances. A sorority is an organization whose members have elected to establish a close affiliation with one another as college students. They are organized for mutual interest in education and college activities. Sororities promote lifetime friendships that are renewed constantly in alumnae groups and chapters. The national aspect of the organization gives members a broader concept of the work of human affairs. They encourage participation in varied activities which offer unlimited and valuable experience. Every sorority encourages and demands good scholarship. Your high school record is care-

fully weighed by a sorority in considering you for membership.

#### ALUMNAE GROUPS

Upon leaving college, sorority women become alumnae and automatically become eligible for membership in alumnae organizations. Each of these groups participates in far-reaching philanthropic and educational projects of its national organization as well as supporting local altruistic programs.

### HOW DO SORORITIES CHOOSE THEIR MEMBERS?

Before a sorority asks you to pledge, the members want to be sure that you will be happy in their group and that they, in turn, will enjoy working and living with you. It is important for sorority members to meet you and to see you as you really are. Formal rushing has been planned with this idea in mind. At the parties sorority members will decide whether they think you will be a congenial member of their group. Some of the things which are of concern are the activities in which you participated in high school, and the scholarship you attained there. After all, these are indications of future achievement.

### HOW DO YOU CHOOSE A SORORITY?

You should choose a sorority in exactly the same way that you choose any group of friends. During rush week, you will have many chances to see and talk with sorority women. Naturally, you want to make a "good impression" and you will dress carefully, as will the girls whom you are going to meet. But do not think your appearance is all that counts. Those girls will be looking at you as a potential friend, so you should act as though you were with your friends, and you should talk about things which really interest you.

Do not be influenced by the opinion of your associates and relatives, for the decision as to which group is best for you is based on personal conviction and mutual interest. Every group is worthwhile and has much to offer you.

Remember to look for the heart of the sorority — its members. The girls you choose as sorority sisters will be your very close friends for four years of college and years afterward. When the time comes to make your choice, make it a wise one. Just keep your eyes open and think for yourself.

When you go through rushing, do not set your heart on one group alone. It is best to know several groups. Remember, check your pocketbook and consider carefully the expense of pledging and initiation before joining a group. If you are able, the extra expense is paid back a thousand-fold in companionship and sisterhood.

One of your first considerations in deciding to pledge a sorority should be whether or not you are able to meet your financial responsibilities. All the sororities at Texas Tech have very similar requirements for members and pledges. If you decide you can afford to pledge a sorority then disregard finance and base your choice of group upon friendship and interest, but be sure you want to assume this obligation.

#### RANGE OF SORORITY EXPENSES — 1960-61

Pledge Fee .....	\$10.00-\$25.00
Initiation .....	40.00-75.00
Monthly Pledge Dues	10.00-15.00
Monthly Active Dues	10.00-15.00
Average Range	
Pledges	\$220.00 \$170.00-\$311.50
Actives	112.00 90.00-135.00

All sororities receive financial supervision from experienced alumnae and employed accountants. The financial advisors of the chapter welcome consultation with the parents at any time.

### FORMAL RUSH

#### LIVING ACCOMMODATIONS FOR RUSH WEEK

All rushees will be housed in Drane or Knapp Hall. Room charges for the week will be \$11.20 payable by August 15 to the Office of the Dean of Women. Payment may be made by check or money order, please do not send cash.

Insofar as possible, you will be assigned to your regular room that you have reserved for the fall semester. If you are not assigned to your regular room, the room assignment during rush is temporary and in no way affects your regular room assignment for the college year.

The residence halls will be open at 1 p.m. Saturday, September 3, at which time you may move in. Please make arrangements to move in the hall between the hours of 1 p.m. and 6 p.m. At that time rooms will be assigned and a key deposit of \$1 will be collected, refundable when the room is vacated at the close of rush week. Rushees *must* be checked out of their rooms by 2 p.m. Saturday, September 10 if not in regular rooms, in order that the permanently assigned students may move in.

The dining room in the hall will not be open during rush week; however the Student Union will serve meals to rushees at a nominal charge. When you arrive on the campus, you will be given a schedule of the hours when meals are served and are required to purchase a meal ticket for the week. The first meal will be Sunday morning breakfast, and the last meal will be the following Friday night.

Panhellenic expects all rushees to be neat, orderly, and quiet in their rooms and to be courteous and cooperate with those in charge of the residence halls.

*The halls will close at 10:30 p.m. Sunday through Friday; and Satur-*

*day at 12 midnight.* Each rushee is responsible for signing in and out of the hall.

#### IMPORTANT TIPS FOR RUSHEES

1. The Panhellenic Office is permanently located in the Dean of Women's Office; however rushees will receive their bids in Drane and Knapp halls.
2. Drane and Knapp Halls will be open for the assignment of rooms from 1 p.m. to 6 p.m. Saturday, September 3, 1960. Rushees will register with members of Panhellenic from 1 p.m. to 6 p.m. in Knapp.
3. At registration each rushee will be assigned a group with whom she will attend the Open Houses.
4. Be *sure* to register for rush!
5. Fill out all 12 registration blanks and return them by August 15 to the Dean of Women's Office. Absolutely no registration will be accepted after this date.
6. Attach one photograph of yourself to 11 of these 12 registration blanks.
7. Pay rushing registration fee of \$1.50, made payable to Panhellenic Council.
8. Pay room fee of \$11.20, made payable to Texas Technological College.
9. If you find it impossible to attend rush, notify the Dean of Women's Office by August 15 and your room fee of \$11.20 will be refunded.

You may send a check or money order, but please do not send cash through the mail.

It is recommended that registration be completed earlier than August 15, if at all possible. You may register by mail or in person. Your registration for rushing and/or hous-

ing will not be complete until all fees are paid.

### RUSH ADVISORS

Each of the eleven sororities at Texas Tech has chosen an alumna to live in your hall during rush week. She has been chosen because of her broad sorority experience and because she is able to submerge her interests to yours and to those of Panhellenic. She is very familiar with rushing procedures and hall's do's and don't's.

She is living in the hall in order to make Rush Week smoother for you. At your first hall meeting you will meet these girls and will be assigned to particular ones. This does not mean you may not consult with other counselors. All of them are there to answer your questions and to help you in any way possible. These girls will not be wearing their pins, will not be participating in rush with their own sororities, and will have no contact with members of their sororities at any time during rush week.

#### RUSH WEEK SCHEDULE

Parties for Periods I, II, and III will be held in private homes in Lubbock. The locations will be posted on the KNAPP AND DRANE BULLETIN BOARDS.

SEPTEMBER, 1960

Saturday, September 3

7:30 p.m. — Convocation and movie, Student Union Ballroom.

Sunday, September 4

Schedule of Open Houses:

1 to 1:40 p.m.

2 to 2:40 p.m.

3 to 3:40 p.m.

4 to 4:40 p.m.

5 to 5:40 p.m.

10:30 p.m. — Wing Meeting in residence halls for all rushees.

Monday, September 5

Schedule of Open Houses

(continued):

9 to 9:40 a.m.

10 to 10:40 a.m.  
11 to 11:40 a.m.  
1 to 1:40 p.m.  
2 to 2:40 p.m.  
3 to 3:40 p.m.  
4 to 4:40 p.m.

Tuesday, September 6

Period I Parties:

7:00 a.m. — Rushees pick up invitations to Period I parties. Sign acceptances immediately in lounge. Rushee must accept all invitations received, to a maximum of eight.

Schedule of Period I Parties:

9 to 10:30 a.m.  
11 to 12:30 p.m.  
2:30 to 4 p.m.  
4:30 to 6 p.m.

Wednesday, September 7

Schedule of Period I Parties

(continued):

9 to 10:30 a.m.  
11 to 12:30 p.m.  
2:30 to 4 p.m.  
4:30 to 6 p.m.

10:30 p.m. — Wing Meetings in residence halls for rushees.

Thursday, September 8

Period II Parties:

7 a.m. Pick up invitations to Period II Parties. Sign acceptance immediately in residence hall lounge. Rushee must accept all invitations received, to a maximum of five.

Schedule of Period II Parties:

9 to 10 a.m.  
10:30 to 11:30 a.m.  
1:30 to 2:30 p.m.  
3 to 4 p.m.  
4:30 to 5:30 p.m.

Friday, September 9

Period III Parties:

2 p.m. — Invitations to Period III Parties will be delivered to rushees. Invitations must be signed and turned in in residence hall lounge. Rushee must accept all invitations received, to a maximum of two.

Schedule of Period III Parties

6:30 to 8 p.m.  
8:30 to 10 p.m.  
10:30 p.m. — Sign preference cards in residence hall lounge.

Signing of this preference card is binding to the effect that if not pledged to the sorority of first choice, then you are willing to be pledged to your second choice, and likewise to third. You should not list on your preferential card the name of a sorority you would be unwilling to join, *since signing the preference card shall be binding for one calendar year if that sorority bids you.*

Saturday, September 10

2-5 p.m. — All rushees are to be available in their rush week rooms for consultation regarding questions on their preferences. (Reading preferences is sometimes difficult for the Dean of Women's staff!)

5 p.m. — Bids will be delivered at this time to the residence hall lounges.

## PREFERENTIAL BIDDING

Friday, September 9 at 10:30 p.m., all rushees are to assemble in the lounge of their hall and fill out a preferential card. On this card the rushee lists in order of her preference any three sororities that she would be willing to pledge.

According to National Panhellenic, "when a girl receives a bid under the preferential system, the signing of the preference card shall be binding to the extent that she shall be considered ineligible for one calendar year for a bid from any fraternity other than the one from which she received a bid, whether it be Texas Technological College, or elsewhere, in accordance with the correct functioning of the preferential system."

THEREFORE A GIRL MUST BE WILLING TO PLEDGE ANY OF THE THREE SORORITIES SHE LISTS.

Saturday morning, the Dean of Women's staff will match the preferential lists of girls each sorority wishes to pledge and rushees' preferential cards which list the three sororities each rushee wishes to pledge. You will be a pledge of the sorority of your first choice if your name is within the quota on the sorority's preferential list. If not, you will be a pledge of your second choice, provided your name is within the quota on that sorority's list, and in the same way, you may become a pledge of your third choice. Only the staff members of the Dean of Women will know whether the sorority you pledge is your first, second, or third preference and the information will be divulged to no one. You will undoubtedly be happy in any one of the three you list, since so many fine groups exist on the campus. It is therefore, urged that you take full advantage of your opportunity to list three sorority choices, since under the preferential system you cannot receive an invitation to membership from a sorority which you have not indicated on your preferential card, even though your name may be on the sorority's preferential list.

Each sorority is limited in its total membership and its total number of pledges each year. The number of pledges allowed each chapter is determined each year by the number of girls interested in sorority membership. Each sorority will be able to pledge a minimum of twenty-five girls during this formal rush period.

## WHAT TO WEAR — WHEN

One of the most important things to remember when planning what you will wear to rush is the climate in Lubbock. You should be prepared for just anything. Simplicity and practicability are the keynotes in campus and rushing clothes.

Good grooming is the most important thing about appearance, not the expensiveness of your clothes. Texas Tech coeds do not wear shorts or long pants in the Tech Union building or the academic buildings.

Open House — Wear fall cottons, hose, heels and hats.

Period I — Wear fall cottons and socks and loafers or flats.

Period II — Wear fall cottons, hose and heels (no hats).

Period III — Wear a dressy dress, hose and heels (no hats).

## OPEN OR INFORMAL RUSH

Open rush for fall begins September 19 and continues through January 6. The dates for open rush in the spring are February 23 through May 6. A girl need not sign to participate in open rush. Any girl who shows an interest may be considered a potential rushee and may be pledged any time during this period. Ribbon pledging will take place in the Dean of Women's Office. Eligibility by a rushee to participate is governed by the same eligibility rules that pertain to formal rush (1.0 or C grade average for the previous semester, as well as an overall 1.0 grade average). Those sororities eligible to participate will be those which have not filled their quota and/or have not reached the chapter limitation established by Panhellenic.

## SUMMER RUSH

The Panhellenic Council of Texas Technological College has adopted the policy of NOT participating in any form of pre-college rush. This prohibits a sorority member at Tech from participating in a rush party of her sorority.

All prospective rushees are reminded that they are NOT to participate in or attend any function given by one fraternity in the form of an organized party.

## RULES GOVERNING FORMAL RUSH WEEK

### I. Eligibility of Rushees

Rushees must be regularly enrolled or in the process of enrolling in Texas Technological College for 12 or more hours in order to be eligible to participate in any rushing procedure. Any girl previously enrolled in any college, including summer school must have a "C" overall average to be eligible; she must also have a "C" average for the preceding long term in which she was enrolled in college.

### II. Rushing Rules

1. Rush Week is defined as beginning at 1 p.m. Saturday, September 3 and ending with receiving bids at 5 p.m. Saturday, September 10.

2. The residence halls will close at 10:30 p.m. on Sunday through Friday nights, and at 12 midnight on Saturday night. Each rushee is responsible for signing in and out of the hall. Lights are to be turned out at 12 midnight with the exception of Saturday.

3. Upon arrival in Lubbock, a rushee is not to go to the home of sorority members, or be with anyone connected with a sorority with the exception of her immediate family.

4. Rushees shall not grant interviews to the press or pose for photographers during rush week unless arrangements have been made with the Panhellenic Council and the Office of the Dean of Women.

5. Emergency telephone calls only will be taken care of through the Drane and Knapp Hall offices. Those numbers are Drane — PO 5-6371; Knapp — PO 5-9343.

6. Rushees must furnish their own transportation to and from the parties.

7. A rushee must arrive at and leave all rush parties at the hour specified in the invitation.

8. A rushee must attend all parties which she has accepted. Broken dates are not permitted. In cases of illness, accident or withdrawal from rush, she should notify the Panhellenic Office immediately in order to avoid future ineligibility.

9. There is to be no smoking at any of the rush parties.

10. Rushees are subject to the penalty of deferred pledging for one semester for violation of rushing rules.

### III. Silence During Formal Rushing

Silence is a time when all rushees are asked not to converse with people other than the rushees and hall counselors. The reason for this is that Panhellenic does not want any of the rushees to choose a sorority based upon outside influence. We have found that girls are much happier in a sorority which they themselves have chosen and not the group which parents, boys, etc., encourage them to join.

1. There shall be no contact or conversation between a rushee and sorority member, pledge, or alumna except at the specified rush parties. (You may say hello!)

2. There is to be no contact with men during rush week.

3. The period of silence begins with convocation on Saturday, September 3 at 7:30 p.m. and ends at 8 a.m. Saturday, September 10 with the exception of sorority which ends at 5 p.m. Saturday, September 10.

4. Sororities are bound by silence and may not deliver letters, telephone calls or telegrams to rushees at any time.

### IV. Illegal Rushing

1. Oral invitations to parties or

to join a sorority are absolutely forbidden during formal rushing.

2. By mutual agreement there shall be no "spiking" at any time. Spiking is defined as persistent persuasion on the part of a sorority to secure from a rushee some commitment of preference for its group.

3. Sorority members shall make no statements to rushees or others giving their idea of sorority ratings, for there is no such thing.

4. No gifts, flowers, or favors can be given rushees with the ex-

ception of Period III parties. Name tags are to be distributed by Panhellenic during registration, and are to be worn all week, with the exception of Period III parties.

### V. Penalties for Violations of Rush Rules by Sororities

It is your responsibility to report infractions of any rushing rule to the Dean of Women's Office within 48 hours of the occurrence. All penalties for violations of rushing rules will be decided by the Judiciary Committee of Panhellenic.

## The National Panhellenic Creed

We, the Fraternity Undergraduate Members, stand for good scholarship, for guarding good health, for wholehearted cooperation with our college's ideals for student life, for the maintenance of fine social standards, and for the serving, to the best of our ability, of our college community. Good college citizenship as a preparation for good citizenship in the larger world of alumnae days is the ideal that shall guide our chapter activities.

We, the Fraternity Alumnae Members, stand for active, sympathetic interest in the life of our undergraduate sisters, for loyal support of the ideals of our Alma Mater, for the encouragement of high scholarship, for the maintenance of healthful physical conditions in chapter house and dormitory, and for using our influence to further the best standards for the education of young women of America. Loyal service to chapter, college, and community is the ideal that shall guide our fraternity activities.

We, the Fraternity Officers, stand for loyal and earnest work, for the realization of these fraternity standards. Cooperation for maintenance of fraternity life in harmony with its best possibilities is the ideal that shall guide our fraternity activities.

We, the Fraternity Women of America, stand for preparation for service through the character building inspired in the close contact and deep friendship of fraternity life. To us, fraternity life is not the enjoyment of special privileges but an opportunity to prepare for wide and wise human service.



Left to right: Jane Sargent, pledge trainer; Ginger Meyers, president; Celia Burnett, rush chairman.

## Alpha Chi Omega

GAMMA RHO



Founded at De Pauw University, October 15, 1885

Number of collegiate chapters — 92

Colors — Scarlet and olive green

Insignia — Lyre with black enamel cross across strings bearing Greek letters

Flower — Scarlet carnation with smilax

Publication — "The Lyre"

Philanthropy — Aid to cerebral palsy patients

Nickname — A Chi O

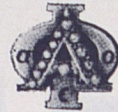
Outstanding events — Candy Stripe Dinner Dance, Formal Spring Presentation, Founders' Day Banquet, Spring Retreat and Workshop, Senior Banquet, and Paddle Party

President — Ginger Meyers

Rush Chairman — Celia Burnett

## Alpha Phi

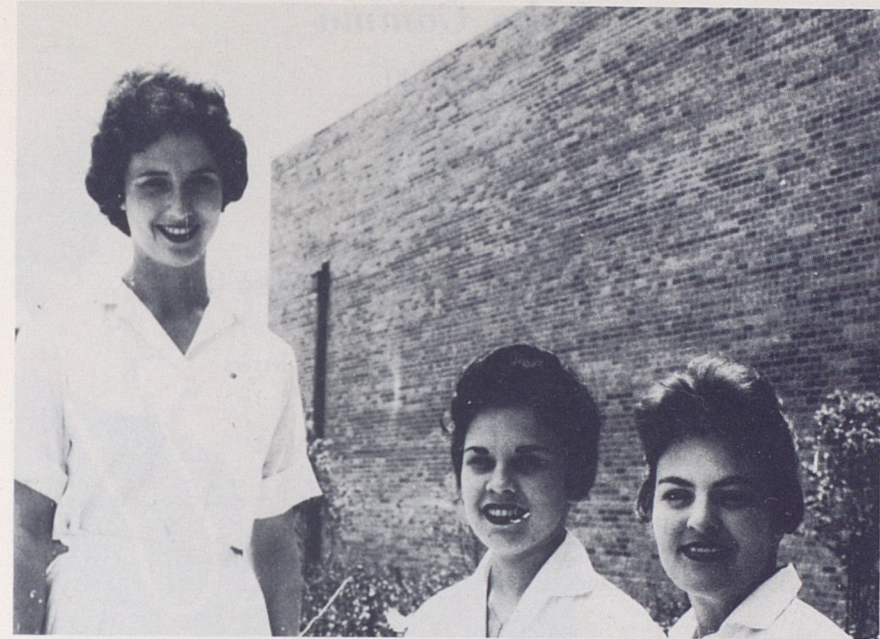
GAMMA IOTA



Founded at Syracuse University, October 10, 1872  
 Number of collegiate chapters — 70  
 Colors — Silver gray and bordeaux  
 Insignia — Plain gold monogram of the two Greek letters with the letters "AEO" in black.  
 Flowers — Lily-of-the-Valley and Forget-Me-Nots  
 Publication — "The Alpha Phi Quarterly"  
 Philanthropy — Cardiac Aid Foundation  
 Nickname — Alpha Phi  
 Outstanding Events — Founders' Day Party, Mother Alumnae Banquet, Work with Cardiac Aid during Heart Week, Birthday Party of chapter founding, annual Easter Egg Hunt for crippled children, Presentation Dance  
 President — Janet Eddleman  
 Rush Chairman — Nancie Morgan



Left to right: Nancie Morgan, rush chairman; Nancy Harmon, pledge trainer; Janet Eddleman, president.



Left to Right: Suzy Davis, pledge trainer; Marcia Vick, president, Suzann Davis, rush chairman.

## Delta Delta Delta

PHI ETA



Founded Thanksgiving Eve, 1888, at Boston University  
 Number of collegiate chapters — 104  
 Colors — Silver, gold, and blue  
 Insignia — Three jeweled stars with a crescent of gold bearing three deltas  
 Flower — Pansy  
 Publication — "The Trident"  
 Philanthropy — Awards scholarship to American and Canadian women students  
 Nickname — Tri Delt  
 Outstanding Events — Founders' Day Dinner, Pine Prance, Pine Pilgrimage, Delta Week in honor of new initiates, Annual Presentation Dance, Pansy Breakfast  
 President — Marcia Vick  
 Rush Chairman — Suzann Davis

## Delta Gamma

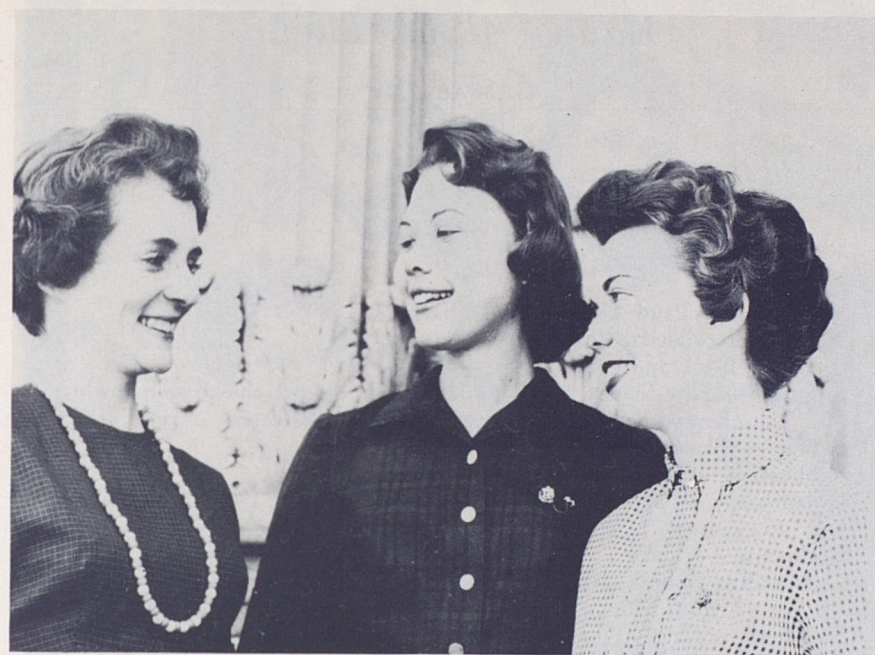
GAMMA XI



Founded at Lewis School, Oxford, Mississippi, December, 1873  
 Number of collegiate chapters — 87  
 Colors — Bronze, pink, and blue  
 Insignia — Anchor with white shield bearing Greek letters  
 Flower — Cream rose  
 Publication — "The Anchors"  
 Philanthropy — Sight conservation and aid to the blind  
 Nickname — DG  
 Outstanding Events — Spring Dinner Dance, Fall Presentation, Pinafore Party, Fall Retreat  
 President — Joanne Darsey  
 Rush Chairman — Nancy Ezell



Left to right: Anne Lipscomb, vice president; Joanne Darsey, president; Nancy Ezell, rush chairman.



Left to right: Kay Sharp, rush chairman; Carolyn Vines, president; La Rue Elliott, pledge trainer.

## Gamma Phi Beta

BETA TAU



Founded at Syracuse University, New York, November 11, 1874  
 Number of collegiate chapters — 68  
 Colors — Mode and brown  
 Insignia — The Greek letters enclosed in a black enameled crescent bearing a Hebrew numeral  
 Flower — Pink carnation  
 Publication — "The Crescent"  
 Philanthropy — Own and operate two summer camps for underprivileged girls at Vancouver, B.C. and Indian Hills, Colorado  
 Nickname — Gamma Phi  
 Outstanding Events — Homecoming Coffee, Founders' Day, Fall Presentation, Spring Dinner Dance, Romeo Dance, Retreat, Senior Breakfast  
 President — Carolyn Vines  
 Rush Chairman — Kay Sharp

## Kappa Alpha Theta

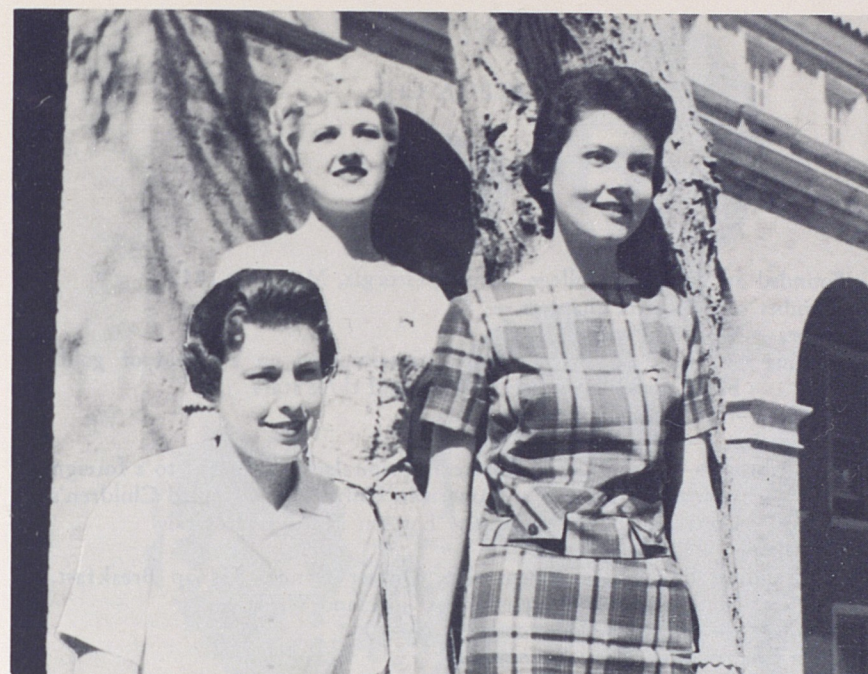
GAMMA PHI



Founded at DePauw University, January 27, 1870  
 Number of collegiate chapters — 84  
 Colors — Black and gold  
 Insignia — Kite-shaped, gold border, black enamel shield and a white chevron on which are inscribed the Greek letters  
 Flower — Black and gold pansy  
 Publication — "Kappa Alpha Theta"  
 Philanthropy — Supports Institute of Logopedics, the Dr. Matilda Brooks research laboratory, aid to the blind  
 Nickname — Theta  
 Outstanding Events — Presentation Dance, Retreat, Dinner Dance, Kite Flying, Kidnap Breakfast, Paddle Party, Founders' Day Banquet  
 President — Carolyn Jenkins  
 Rush Chairman — Lynn Pray



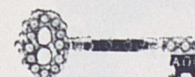
Left to right: Lynn Pray, rush chairman; Carolyn Jenkins, president; Ann Fursman, vice president.



Seated: Ginny Johnson, rush chairman. Standing: Carolann Pinson, president; Phyllis Reed, membership chairman.

## Kappa Kappa Gamma

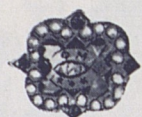
DELTA PSI



Founded at Monmouth College, October 13, 1870  
 Number of collegiate chapters — 87  
 Colors — Dark and light blue  
 Insignia — Golden key  
 Flower — Fleur-de-lis  
 Publication — "The Key"  
 Philanthropy — Rehabilitation services for crippled children and adults  
 Also, support of a foster child in Belgium  
 Nickname — Kappa  
 Outstanding Events — Fall Dinner Dance, Valentine Presentation, Pledge Peppermint Party, Big-Little Sister Paddle Party, Pledge-Active Picnic, Senior Farewell Party  
 President — Carolann Pinson  
 Rush Chairman — Ginny Johnson

## Phi Mu

ALPHA CHI



Founded at Wesleyan College, Macon, Georgia, March 4, 1852  
 Number of collegiate chapters — 82  
 Colors — Rose and white  
 Insignia — Shield of black enamel superimposed on a shield of gold; black shield bears Greek letters and three stars  
 Flower — Enchantress carnation  
 Publication — "The Aglaia"  
 Philanthropy — Toy carts in children's hospitals, study grant to a foreign woman to study in an American University, Crippled Children's Convalescent Ward of the Eastern Navajo Hospital  
 Nickname — Phi Mu  
 Outstanding Events — Presentation, Dinner Dance, Kidnap Breakfast, Founders' Day Banquet, Heart in Hand Week  
 President — Dorothy Dodsworth  
 Rush Chairman — Judy Kinney



Left to right: Dorothy Dodsworth, president; Donna St. Clair, pledge trainer; Judy Kinney, rush chairman.



Left to right: Margaret Snider, pledge trainer; Karen O'Brien, president; Shirley Stephens, rush chairman.

## Pi Beta Phi

TEXAS GAMMA



Founded at Monmouth College, April 28, 1867  
 Number of collegiate chapters — 104  
 Colors — Wine and silver blue  
 Insignia — Golden arrow with Greek letters inscribed on feathers  
 Publication — "The Arrow"  
 Philanthropy — Founding and maintenance of the Pi Beta Phi Settlement School in Gatlinburg, Tennessee  
 Nickname — Pi Phi  
 Outstanding Events — Ivy League Dance, Presentation, Dinner Dance, Annual Santa Fe Retreat at Easter  
 President — Karen O'Brien  
 Rush Chairman — Shirley Stephens

## Sigma Kappa

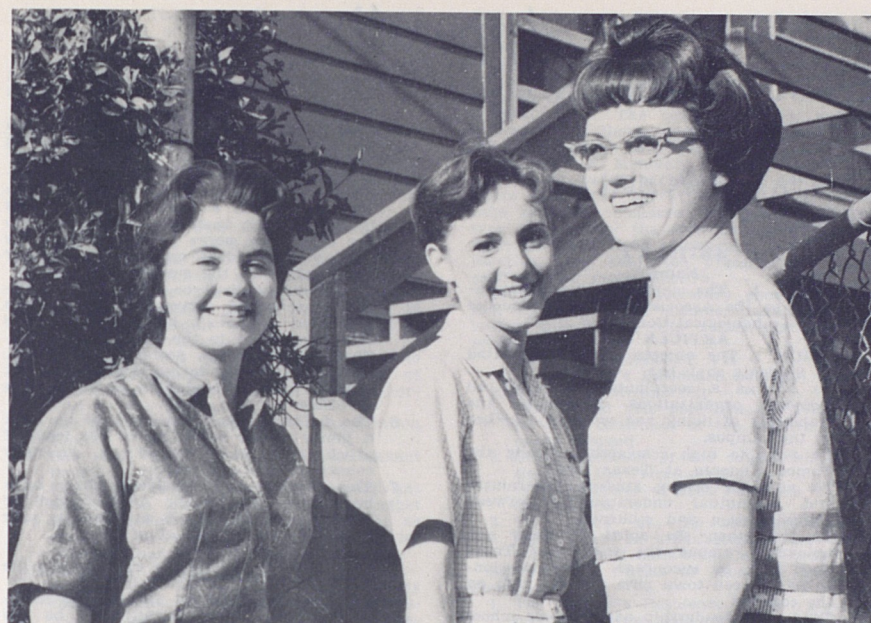
GAMMA IOTA



Founded at Colby College in 1874  
 Number of collegiate chapters — 70  
 Colors — Maroon and lavender  
 Insignia — Gold triangle supporting a raised triangle of maroon enamel bearing the Greek letters in gold  
 Flower — Violet  
 Publication — "The Sigma Kappa Triangle"  
 Philanthropy — The Maine Sea Coast Mission  
 Nickname — Sigma  
 Outstanding Events — Presentation Dance, Dinner Dance, Founders' Day Banquet, Retreat, Pledge Tea  
 President — Geraldine Lokey  
 Rush Chairman — Linda Hegwer



Left to right: Joyce Tallman, pledge trainer; Linda Hewger, rush chairman; Geraldine Lokey, president.



Left to right: Patsy Norman, president; Judy Pettit, pledge trainer; Donna Peachee, rush chairman.

## Zeta Tau Alpha

GAMMA TAU



Founded at Longwood College, Virginia, October 15, 1898  
 Number of collegiate chapters — 104  
 Colors — Steel gray and turquoise  
 Insignia — Shield of black enamel superimposed on a shield of gold; black shield bears five-pointed crown and Greek letters  
 Flower — White violet  
 Publication — "Themis"  
 Philanthropy — Work in cooperation with the National Society of Crippled Children and Adults in publishing a manual on the treatment of the cerebral palsied  
 Nickname — Zeta  
 Outstanding Events — Balloon Sale for the March of Dimes, Spring Presentation, Christmas Party for Negro Children, Dinner Dance, Zeta Week, Farewell Luncheon  
 President — Patsy Norman  
 Rush Chairman — Donna Peachee

# Appendix

## CONSTITUTION AND BY-LAWS OF THE ASSOCIATED WOMEN STUDENTS

### ARTICLE I Name

SECTION 1. The name of this organization shall be the Associated Women Students of Texas Technological College.

### ARTICLE II

SECTION 1. The objects of the Associated Women Students shall be:

1. To act as a coordinating body of all women's organizations in setting the standards of living and working together on the campus.
2. To promote high scholarship among the women students at Texas Tech.
3. To aim for strong student government and a mutual understanding between administration and students.
4. To strengthen the spirit of unity and fellowship among the women of Texas Tech and to encourage closer relationships between town girls and the girls on the campus.
5. To develop leadership and promote school spirit through the encouragement of women's participation in government and college activities.

SECTION 2. The Associated Women Students shall operate under the powers set forth in this Constitution.

SECTION 3. Additional powers will be granted the council each year according to the progression and capability exhibited by the previous council and Association.

### ARTICLE III Members

SECTION 1. Every woman student enrolled at Texas Tech shall be a member of the Association and shall pay dues at the time of registration.

SECTION 2. The Dean of Women and an Assistant Dean of Women shall be ex-officio members of the organization. An Assistant Dean of Women shall act as an advisor to the Association.

SECTION 3. Each woman student of Texas Tech who resides in a private home is also eligible for membership in the "Town Girls Club." (This organization is set up for town girls, in the hope that through such an organization a closer unity can be gained between the town girls and the girls residing on the campus.)

### ARTICLE IV.

SECTION 1. The following officers shall serve as the executive body of the Associated Women Students and the AWS general council.

SECTION 2. Officers shall be:

1. President
2. First Vice President
3. Second Vice President
4. Third Vice President
5. Secretary
6. Treasurer
7. Judiciary Chairman
8. IAWS Representative

SECTION 3. Qualifications for officers:

1. They shall maintain a 1.5 overall grade point average for all the time they have

been in school and a 1.5 grade point average for the previous semester at Tech.

2. They shall have been enrolled in Tech for at least one semester before being nominated or elected.
3. The president, first and third vice presidents and the IAWS representative shall have been a member of the AWS Council for at least a year previous to the term they serve as an officer. The third vice president must be in summer school or from the surrounding area.
4. The president shall be of senior classification when she serves. She must have completed 90 credit hours at the time of taking office in the fall.
5. The vice presidents, secretary, treasurer, and IAWS representative shall be at least a junior at the beginning of their term of office.
6. The judiciary chairman shall be at least a junior at the beginning of her term of office, and have served on judiciary council at least one year.
7. The second vice president shall have been a member of the AWS Council or WRC for a period of at least a year previous to her term of office.

### SECTION 4. Elections

1. The officers shall be elected by the women students of the college.
2. The term of office for officers and members of the AWS Council shall be one school year.
3. A nominating committee composed of all members of the council who have completed 90 credit hours shall prepare a slate of officers to be presented at a nominating assembly, where other nominations of qualified girls may be made from the floor.

### ARTICLE V Duties of Officers

#### SECTION 1. President

1. It shall be the duty of the president to preside at the meeting of the Association.
2. She shall exercise supervision over the activities of the Association and be alert to the needs of the campus.
3. She is also president of the AWS Council and presides over this governing body.
4. It shall be the duty of the president to see that the provisions of the Constitution are carried out.
5. She shall have the power to appoint the chairman of all committees named in the Constitution.
6. She shall act as ex-officio member of all committees.
7. She may call a meeting of the council or of the Association with the consent of the secretary.

#### SECTION 2. First Vice President

1. It shall be the duty of the vice president to preside in the absence of the president.

2. She shall assist the president in the direction of the affairs of the Association and the Council and shall assume the duties of the president in case the office of the president is left vacant.

3. She shall act as the chairman of the "Big-Little Sister Committee."

4. She shall supervise the AWS elections.

#### SECTION 3. Second Vice President

1. She shall preside at the meeting of the Women's Residence Council.

2. She shall keep a complete record of the activities of the Women's Residence Council and shall make regular reports to the AWS Council.

### SECTION 4. Third Vice President

1. The duties of the third vice president shall read: It shall be the duty of the third vice president to be in charge of and supervise AWS activities during the summer.

### SECTION 5. Secretary

1. It shall be the duty of the secretary to keep the records of the actions and meetings of the Association and the Council.
2. She shall take care of all council correspondence.
3. She shall file and preserve all reports and papers of the Association.
4. It shall be the duty of the secretary to report and publicize all activities of AWS through "The Toreador," town papers, campus bulletins, alumni news, and in any other possible way.

### SECTION 6. Treasurer

1. It shall be the duty of the treasurer to collect all funds and fines for lack of attendance and care for all bills authorized by the advisor.
2. She shall have charge of the Association funds.
3. She shall keep a strict and permanent record of all expenses.
4. She shall make a financial report annually and present a proposed budget for the following year. She shall act as ex-officio member of all committees involving finance.

### SECTION 7. Judiciary Chairman

1. It shall be the duty of the judiciary chairman to preside at Judiciary Council meetings, and to act as liaison between Judiciary Council and AWS.

### SECTION 8. IAWS Representative

1. The IAWS representative shall be in charge of the clearing house at Texas Tech and she shall take care of all correspondence with member schools of IAWS.

### SECTION 9.

1. The AWS representative from organizations shall be a sophomore.

### ARTICLE VI AWS General Council

SECTION 1. The purpose of the council shall be to serve as a governing body for the Association and to act as a coordinator or all campus activities engaged in by women students.

SECTION 2. The council shall be composed of the eight officers elected by the Associated Women Students, one girl elected by each of the four classes, and one representative from each of the women's organizations on the campus. At present there are: Alpha Chi Omega, Alpha Lambda Delta, Alpha Phi, Angel Flight, Book Reviewers, Casa Linda, Delta Delta Delta, Delta Gamma, Doak Hall, Drane Hall, Freshman Class, Gamma Phi Beta, Home Economics Club, Horn Hall, Junior Class, Junior Council, Kappa Alpha Theta, Kappa Kappa Gamma, Knapp Hall, Major-Minor Club, Mortar Board, Mu Phi Epsilon, Panhellenic, Junior Panhellenic, Phi Gamma Nu, Phi Mu, Phi Upsilon Omicron, Pi Beta Phi, Senior Class, Sigma Kappa, Sophomore Class, Tau Beta Sigma, Tech Women's Art Club, Theta Sigma Phi, Town Girls' Club, Weeks Hall, and Zeta Tau Alpha.

SECTION 3. The council shall meet every week unless otherwise stated.

SECTION 4. In case the office of the president is left vacant, the first vice president shall become president, and a new vice president shall be elected by the council. If for any reason a vacancy occurs in any of the other elected offices, the council shall elect someone to fill the vacancy.

SECTION 5. Scholastic eligibility for the members of the council shall be a 1.0 over-

all grade point average, as well as a 1.0 grade point average for the preceding semester.

SECTION 6. If it is impossible for a council member to attend a meeting, it is permissible to send an alternate.

SECTION 7. The consequence for missing a meeting without adequate excuse or the attendance of an alternate shall be one dollar.

SECTION 8. Members of the council who are absent twice in succession without adequate excuse or the attendance of an alternate shall be considered inactive. The secretary shall notify the organization which they represent that their organization has become inactive, and that the organization should send another representative.

SECTION 9. The secretary should be notified by the absent member before the following meeting of the reason for her absence.

### ARTICLE VII Women's Residence Council

#### SECTION 1. Membership

1. The second vice president of AWS shall serve as chairman of the Women's Residence Council.
2. Other members of the council shall consist of the vice presidents and AWS representatives of each residence hall and Casa Linda.
3. The office of the secretary-treasurer shall rotate in alphabetical order among the residence halls and Casa Linda.

#### SECTION 2. Duties of Women's Residence Council

1. The Women's Residence Council shall act in collaboration with the Dean of Women and Legislature on matters of group living.
2. The Women's Residence Council shall serve as the policy making body of the women's residence halls, and shall submit recommendations to be approved by the AWS Council and the Dean of Women.

### ARTICLE VIII Amendments

SECTION 1. The Constitution may be amended at a regular meeting of the Council of the Associated Women Students provided that there are two-thirds of the members present and that the amendments have been read at the council meeting preceding the one at which the vote is taken.

SECTION 2. The proposed amendments must be posted immediately after the meeting at which they are presented to the council.

### ARTICLE IX Committees

SECTION 1. The Nominating Committee shall be composed of the members of the council who have completed 90 credit hours.

SECTION 2. There shall be an executive committee composed of all the officers of AWS, and it shall be their duty to organize and eliminate unnecessary details in the material to be covered in council meetings.

SECTION 3. There shall be such other committees as the Association or council may demand.

SECTION 4. The president shall be an ex-officio member of all committees.

SECTION 5. The treasurer shall act as ex-officio member of all committees involving finance.

### ARTICLE X National Convention

SECTION 1. The expenses of the official delegates to the National Convention shall be paid by the Associated Women Students.

SECTION 2. These delegates shall be the incoming president, the outgoing president, and the advisor or their alternates which will be elected by the council.

## AWS ACTIVITIES POINT SYSTEM

### TOREADOR

editor, 20  
asst. editors (managing, news, campus, issue, sports), 15  
business mgr., 18

### LA VENTANA

editor, 20  
asst. editor, 15  
section editor, 10

### SORORITIES

president, 18  
vice president (if not pledge trainer), 6  
recording secretary, 6  
corresponding secretary, 10  
treasurer, 15  
pledge trainer, 15  
social chairman, 12  
rush chairman, 7  
scholarship chairman, 7  
other officers or committee chairmen, 5  
officers of pledge class — one-half the points for the corresponding chapter office (ex. pres., 9)  
member or pledge, 1

### AWS

president, 15  
second vice pres. (WRC pres.), 13  
IAWS rep., 11  
first vice pres., 11  
third vice pres., 11  
rep. from organization, 4 (except residence hall rep.)  
rep. from residence hall, 11  
secretary, 11  
treasurer, 11  
Judiciary Council chairman, 11

### TECH UNION

president, 20  
vice president, 11  
public relations, 11  
personnel, 11  
committee chairman, 8  
secretary, 6  
treasurer, 5  
executive asst., 6  
committee member, 4

### BSO

president, 18  
vice president, 10  
secretary, 10  
treasurer, 6  
representative from organization, 1  
executive council (except officers already listed), 3  
committee chairman, 3

### RESIDENCE HALLS

president, 17  
other officers, 5  
legislator, 5  
advisory council, 3  
chairman (such as social), 5  
freshman rep. (junior legislator), 3

### STUDENT BODY

president, 20  
other major offices, 17

### STUDENT COUNCIL

representative, 8

### FRESHMAN CLASS

president, 10  
vice president, 10  
secretary-treasurer, 10

### FRESHMAN COUNCIL

representative, 8

### PANHELLENIC

president, 15  
vice president, 13  
rush chairman, 12  
activities chairman, 13  
committee chairman (other than those already listed), 7  
secretary, 7  
treasurer, 7  
representative, 4

### JUNIOR PANHELLENIC

all officers, 5  
members, 3

### Varsity Show

chairman, 15  
asst. chairman, 12  
director, 15  
producer, 15  
cast, 11

### SPEECH PLAYS, DEPARTMENTAL SHOWS

all participants, 9 (for each show)

### MORTAR BOARD

president, 10  
projects chairman, 10  
secretary, 6  
treasurer, 6  
other officers, 4  
member, 1

### CHEERLEADER, 10

### FRESHMAN CHEERLEADER, 5

### ROTC SWEETHEARTS, 2

### CLASSES

president, 12  
vice president, 9  
secretary-treasurer, 7  
committee chairmen, 7

### ANGEL FLIGHT

drillmaster, 7  
president, 10  
other officers, 6  
member or alternate, 5

### TECH CHOIR, 4

### TECH SINGERS, 3

### BAND

member, 3  
majorette, 3  
officer, 4

### CHAIRMAN OF HOME ECONOMICS OPEN

### HOUSE, 8

### CHAIRMAN OF DAD'S DAY, 8

### HONORARIES AND DEPARTMENTAL CLUBS

president, 5  
vice pres., 4  
other officers, 3  
committee chairman, 2  
member, 1

### RELIGIOUS AND MUTUAL INTEREST CLUBS

president, 4  
vice pres., 3  
other officers, 2  
member, 1

### INTERCOLLEGIATE RELIGIOUS COUNCIL

president, 8  
other officers, 5  
member, 1

### WORKING HOURS

1 point per 2 hrs. work a week

### GENERAL:

1. The point system is based on time consumption, rather than on prestige.

2. Maximum number of points an upper-classman may hold at any one time is 35. Freshmen women are limited to 25 points maximum. This is not cumulative. The points are in effect only as long as the office is held.

3. No woman may hold more than one 20-point office at one time.

4. If a woman is an officer, chairman or has another office for which points are given, she does not count her points for membership, also. The membership points are counted if she has no position.

5. Any woman who wishes to appeal her case, feeling she has substantial reason to deviate from the maximum points allowed, may appear before Judiciary Council. The Council will decide on each case individually.

6. The purpose of the point system is to benefit the individual, the organization, and the campus. It is to avoid having too few students accept all the responsibility, to enable those who are capable to develop their abilities, to keep outside activities from interfering unduly with the student's academic program, and to encourage each woman student to spend her time on activities in which she is most interested in and to choose her activities carefully.

Printed By  
THE TEXAS TECH PRESS  
Texas Technological College  
Lubbock

## *Women's Creed*

I believe in the women of this college, in their ideals and sincerity of purpose.

I believe in my ability to use wisely the privileges of self government and will strive to accept its responsibilities.

I believe that my purpose in college is to learn to think.  
I will present my best efforts in seeking what is true and will regard the classroom as a place for unquestionable honesty.

I believe in myself. Recognizing both my strengths and weaknesses, I will strive to follow the Rule of Life — that of charity toward others and service to all.

